

# ILLUSTRATED PARTS LIST

MODELS	SERIAL NUMBER PREFIX	MODELS	SERIAL NUMBER PREFIX
600150	11-		

## DOUBLE EAGLE™ 50 CHAIN SAW



McCulloch chain saws are identified by a model number (in this instance, 600150) followed by a suffix letter (A, B, C, etc.) stamped on the identification plate attached to the saw. Suffix letters denote variations in parts or assemblies in the manufacture of the saw.

Part numbers listed in this I.P.L. which have a suffix letter or letters following the description, indicate the part is used only on the model(s) identified by the letter or letters.

Part numbers and descriptions without suffix letter or letters apply to all versions of the chain saw model.

Part numbers which have one or more dots (.) preceding their descriptions may be ordered individually, but they are also included in the kit or assembly whose description begins directly above the dot(s).

Part numbers in this IPL which were not in the previous IPL covering these saws, are indicated by a dash (-) preceding the new part number.

The policy of McCulloch Corporation is one of continual improvement in design, manufacturing and engineering advancement wherever possible to assure still finer two-cycle power tools. Hence, specifications, equipment, colors, design and manufacturer's suggested list prices are subject to change without notice and McCulloch Corporation reserves the right to make such changes without prior notification or obligation to backfit or supply backfit components for units previously shipped from the factory.

### - CONTENTS -

	Page
FIGURE 1 . . . . GENERAL ASSEMBLY . . . . .	2
FIGURE 2 . . . . STARTER ASSEMBLY . . . . .	3
FIGURE 3 . . . . CHAIN BRAKE ASSEMBLY . . . . .	4
FIGURE 4 . . . . CARBURETOR ASSEMBLY . . . . .	5
FIGURE 5 . . . . MAIN FRAME ASSEMBLY . . . . .	6
FIGURE 6 . . . . POWERHEAD ASSEMBLY . . . . .	7
ENGINE SPECIFICATIONS . . . . .	8
BAR & CHAIN ACCESSORIES . . . . .	8

JUNE 1985

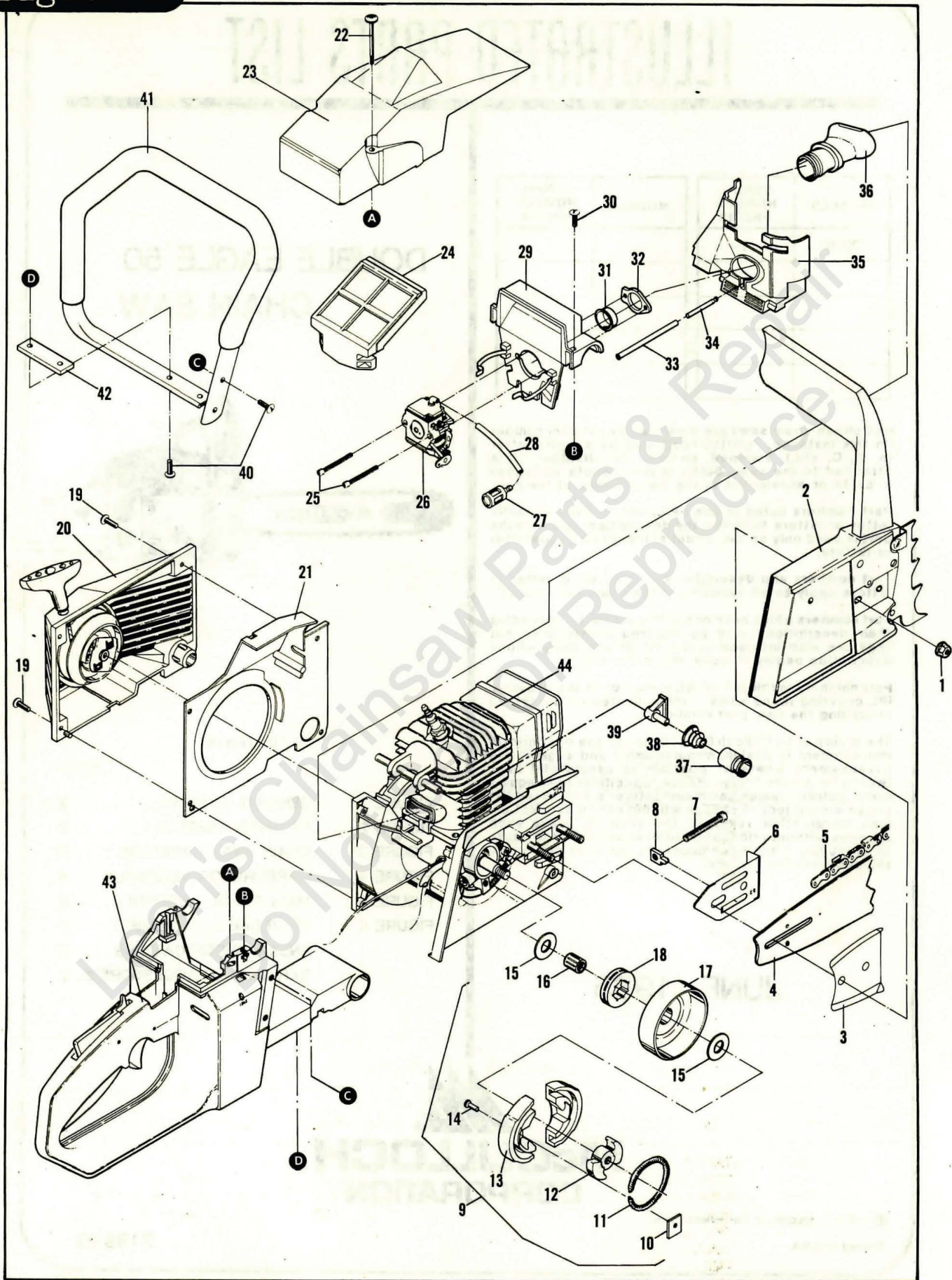




Figure 1

# GENERAL ASSEMBLY

DOUBLE EAGLE™ 50





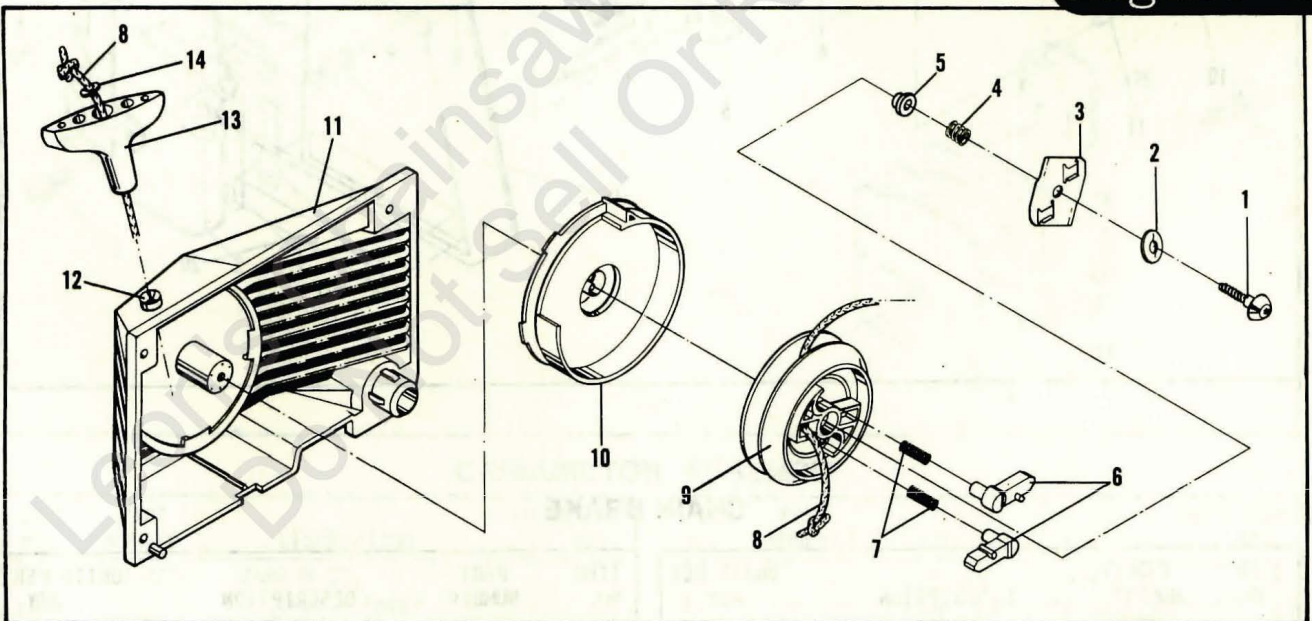
**FIGURE 1 GENERAL ASSEMBLY**

**DOUBLE EAGLE™ 50**

ITEM NO.	PART NUMBER	DESCRIPTION	UNITS PER ASY.
1	218042	Nut - Bar	2
2	-- --	Chain Brake Assembly FIGURE 3	
3	218832	Bar Plate	1
4	-- --	Bar PAGE 8	1
5	-- --	Chain PAGE 8	1
6	217594	Bar Plate	1
7	217640	Bar Adjustment Screw	1
8	217479	Bar Adjustment Nut	1
9	218360	Clutch Assembly	1
10	218068	. Plate - Back	2
11	217898	. Spring - Garter	1
12	217897	. Rotor - Clutch	1
13	217896	. Clutch - Shoe	2
14	218370	. Rivet	2
15	217457	. Washer	2
16	215720	. Bearing - Needle	1
17	217735	Drum/ Sprocket	1
18	218925	Sprocket .325 Pitch	1
18	218928	Sprocket .375 Pitch	1
19	217936	Screw - 10-24 x .75	4
20	-- --	Starter Assembly FIGURE 2	1
21	217537	Baffle - Fan	1
22	218083	Screw - 10-24 x .25	2
23	217836	Shroud - Top	1

ITEM NO.	PART NUMBER	DESCRIPTION	UNITS PER ASY.
24	218255	Filter - Air Assembly	1
25	217940	Screw - 10-24 x 1.50	2
26	-- --	Carburetor (FIGURE 4)	1
27	218260	Vent - Carburetor	1
28	218483	Hose - Vent	1
29	218252	Bulk Head Assembly	1
30	217937	. Screw - 10-24 x 1	2
31	95656	Eyelet	1
32	218253	Flange - Carburetor Mount	1
33	218483	Hose - Pulse	1
34	218129	Barb - Pulse	1
35	217283	Shroud - Cylinder	1
36	217766	Boot - Inlet	1
37	218371	Carrier - Rear Mount	2
38	218372	Mount - Rear	2
39	218362	Retainer - Cylinder Shroud	2
40	217936	Screw - 10-24 x .75	4
41	218262	Frame/Grip Assembly	1
42	218680	Spacer/C-Frame	1
43	-- --	Main Frame Assembly (FIGURE 5)	1
44	-- --	Powerhead Assembly (FIGURE 6)	1

**STARTER ASSEMBLY** Figure 2



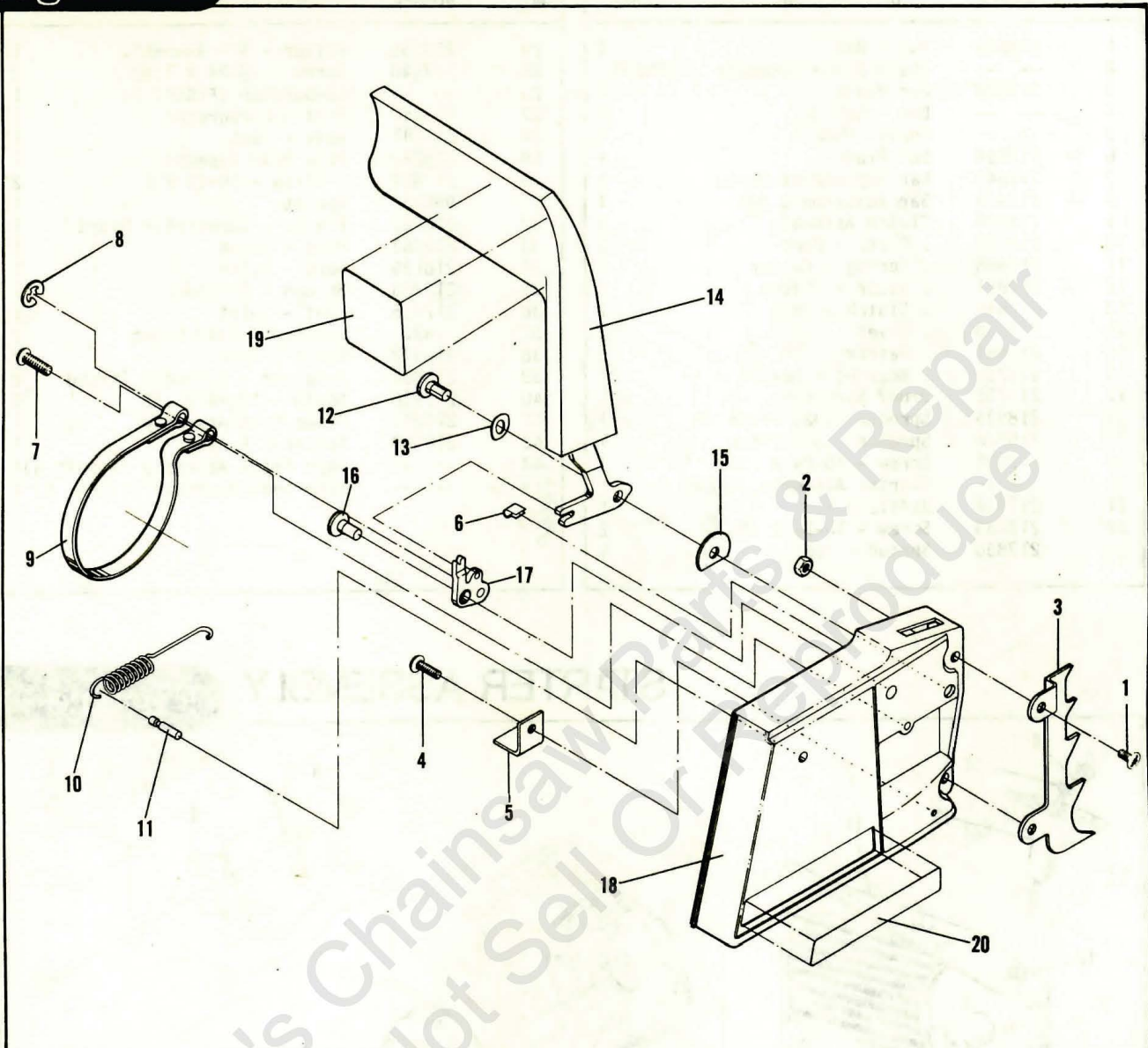
**STARTER ASSEMBLY**

ITEM NO.	PART NUMBER	DESCRIPTION	UNITS PER ASY.
	216044	STARTER ASSY. KIT	1
1	218056	.SCREW-PAWL PLATE	1
2	218055	.WASHER-PAWL PLATE	1
3	217893	.PLATE-PAWL	1
4	218054	.SPRING	1
5	218053	.BUSHING	1
6	217890	.PAWL-STARTER	2
7	218052	.SPRING-PAWL	2

ITEM NO.	PART NUMBER	DESCRIPTION	UNITS PER ASY.
8	218051	.ROPE	1
9	217889	.PULLEY-STARTER	1
10	217891	.RECOIL HSG. & SPRING	1
11	217888	.STARTER HOUSING	1
12	--	..GUIDE ROPE	1
13	91255	HANDLE-STARTER	1
14	216531	WASHER	1



**Figure 3 CHAIN BRAKE ASSEMBLY**



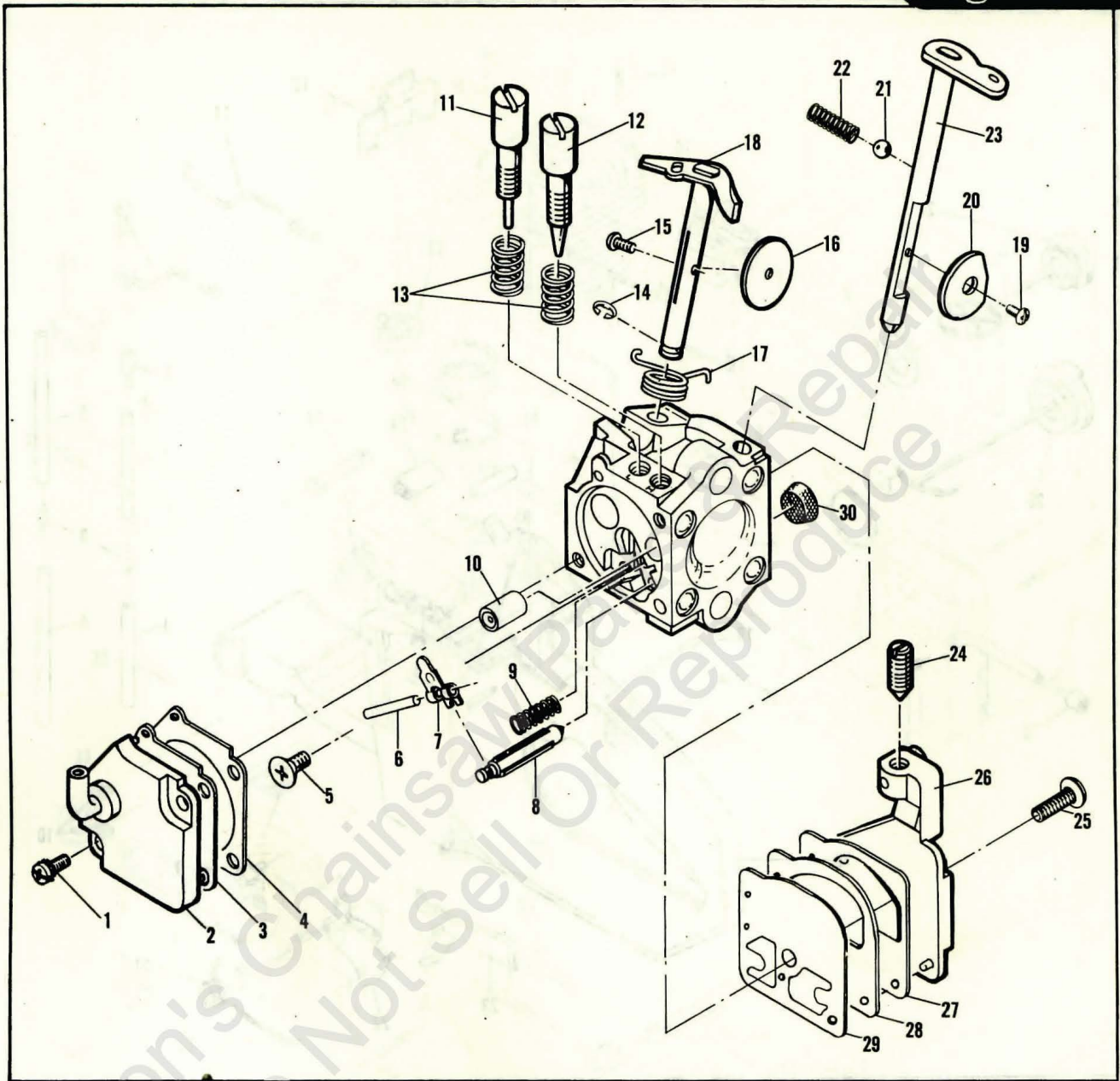
**CHAIN BRAKE**

ITEM NO.	PART NUMBER	DESCRIPTION	UNITS PER ASY.
	218407	BRAKE ASSEMBLY	1
1	217935	.SCREW 10-24 x .50	2
2	105367	.NUT-HEX 10-24	2
3	218103	.SPIKE	1
4	217935	.SCREW	1
5	218641	.STOP-CHAIN	1
6	110737	.CLIP	1
7	218361	.SCREW 1/4-20 x .75	1
8	218079	.E CLIP	1
9	217472	.BRAKE BAND	1
10	217440	.SPRING-CHAIN BRAKE	1

ITEM NO.	PART NUMBER	DESCRIPTION	UNITS PER ASY.
11	217449	.PIN-SPRING HOOK	1
12	217450	.PIVOT LEVER	1
13	218679	.WASHER-SPRING	1
14	218059	.FLAG LEVER ASY.	1
15	218674	.D WASHER	1
16	217448	.PIVOT LATCH	1
17	217454	.LATCH ASY.	1
18	217664	.CHAIN BRAKE HOUSING	1
19	218132	LABEL-SAFETY	1
20	218728	PLATE-NAME	1

# CARBURETOR ASSEMBLY

Figure 4



## CARBURETOR ASSEMBLY

ITEM NO.	PART NUMBER	DESCRIPTION	UNITS PER ASY.
	218254	ZAMA M-10	
1	-- --	. Screw - Cover	2
2	-- --	. Cover - Diaphragm	1
3	-- -- ①②	. Gasket - Metering Diaphragm	1
4	-- -- ①②	. Diaphragm Asy. - Metering	1
5	-- -- ①	. Screw - Lever Pin	1
6	-- -- ①	. Pin - Lever	1
7	-- -- ①	. Lever - Metering	1
8	-- -- ①	. Valve - Inlet Needle	1
9	-- -- ②	. Spring - Lever	1
10	-- -- ④	. Welch - Plug	1
11	-- -- ①	. Needle - Idle	1
12	-- -- ①	. Needle - High Speed	1
13	-- -- ①	. Needle - Spring	2
14	-- --	. "E" Ring	1
15	-- --	. Screw - Plate	1

ITEM NO.	PART NUMBER	DESCRIPTION	UNITS PER ASY.
16	-- --	. Plate - Throttle	1
17	-- --	. Spring - Throttle Return	1
18	-- --	. Shaft Assembly - Throttle	1
19	-- --	. Screw - Choke	1
20	-- --	. Plate - Choke	1
21	-- --	. Ball - Check	1
22	-- --	. Spring	1
23	-- --	. Shaft Assembly - Choke	1
24	-- --	. Screw - Idle Speed	1
25	-- --	. Screw - Pump Cover	1
26	-- --	. Pump - Cover	1
27	-- -- ①②	. Diaphragm - Fuel Pump	1
28	-- -- ①②	. Gasket - Fuel Pump	1
29	-- -- ①②	. Fuel Pump	1
30	-- -- ①	. Screen	1

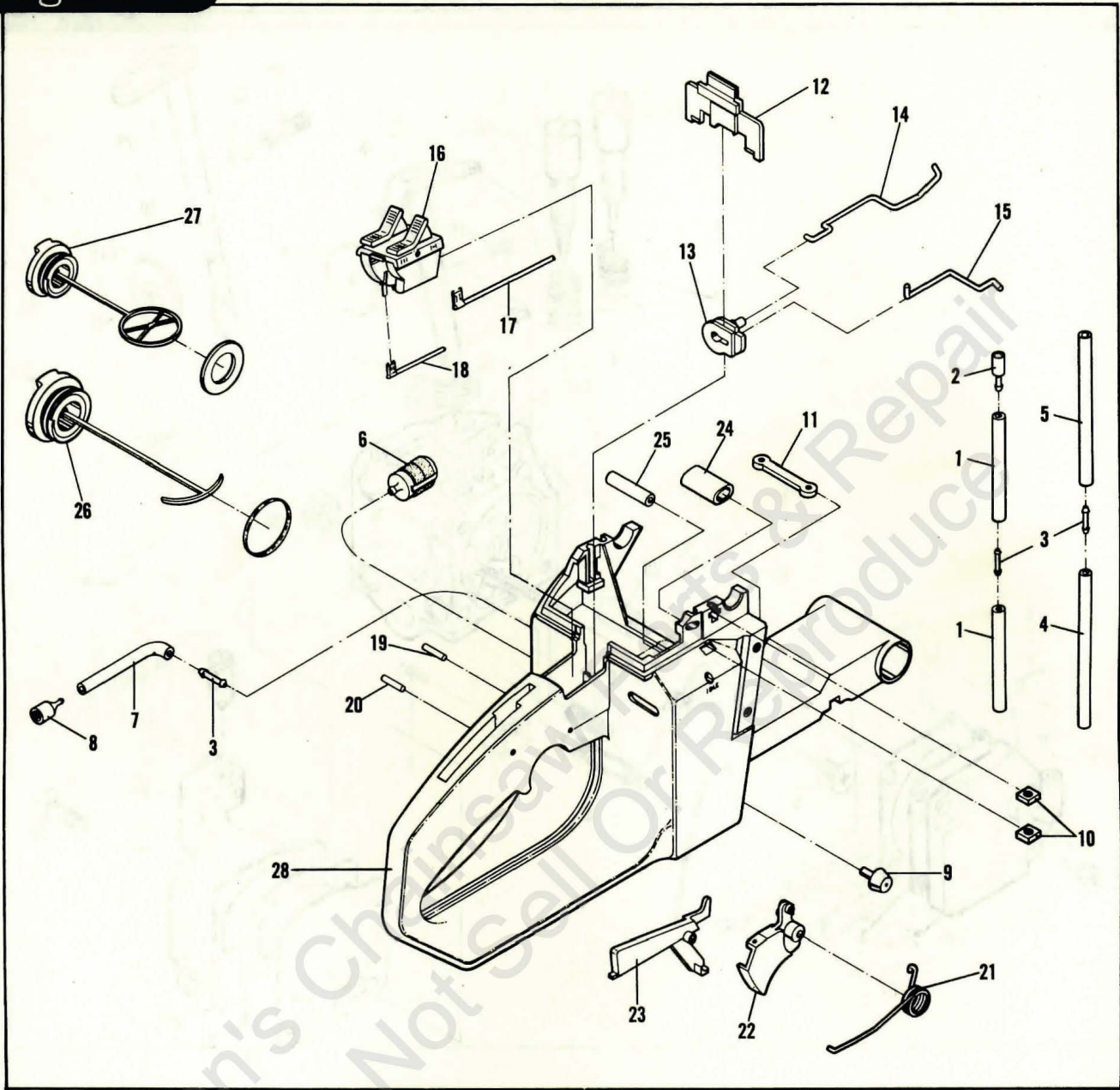
① Contained in Major Repair Kit, P/N 218868.  
 ② Contained in Minor Repair Kit, P/N 218869.



Figure 5

MAIN FRAME ASSEMBLY

DOUBLE EAGLE™ 50



MAIN FRAME ASSEMBLY

ITEM NO.	PART NUMBER	DESCRIPTION	UNITS PER ASY.
	218898	Main Frame Assembly	1
1	218483	. Hose - Vent	1
2	218260	. Vent	1
3	218415	. Barb - Hose	3
4	218535	. Hose - Fuel Tank	1
5	218480	. Hose - Fuel/Oil	1
6	215714	. Pickup - Fuel	1
7	218483	. Hose - Oil	1
8	92465	. Pickup - Oil	1
9	218122	. Bumper - Cut Control	2
10	218005	. Nut - 10-24 Square	4
11	218117	. Plate - Nut	1
12	218029	. Retainer - Control Housing	1
13	217870	. Grommet Control	1
14	218118	. Rod - Throttle	1
15	218251	. Rod - Choke	1

ITEM NO.	PART NUMBER	DESCRIPTION	UNITS PER ASY.
16	218195	. Control Assembly	1
17	218349	. . Wire Assembly	1
18	218348	. Wire Assembly	1
19	218491	. Pin - Trigger	1
20	218492	. Pin - Trigger	1
21	93771	. Spring - Trigger	1
22	93538A	. Trigger Assembly	1
23	91955	. . Trigger - Release	1
24	218484	Tube - H/L Adjustment	1
25	218485	Tube - Idle Adjustment	1
26	236790	Fuel - Cap Assembly	1
27	235552	Oil - Cap Assembly	1
28	218248	Main Frame	1



# POWERHEAD ASSEMBLY

Figure 6

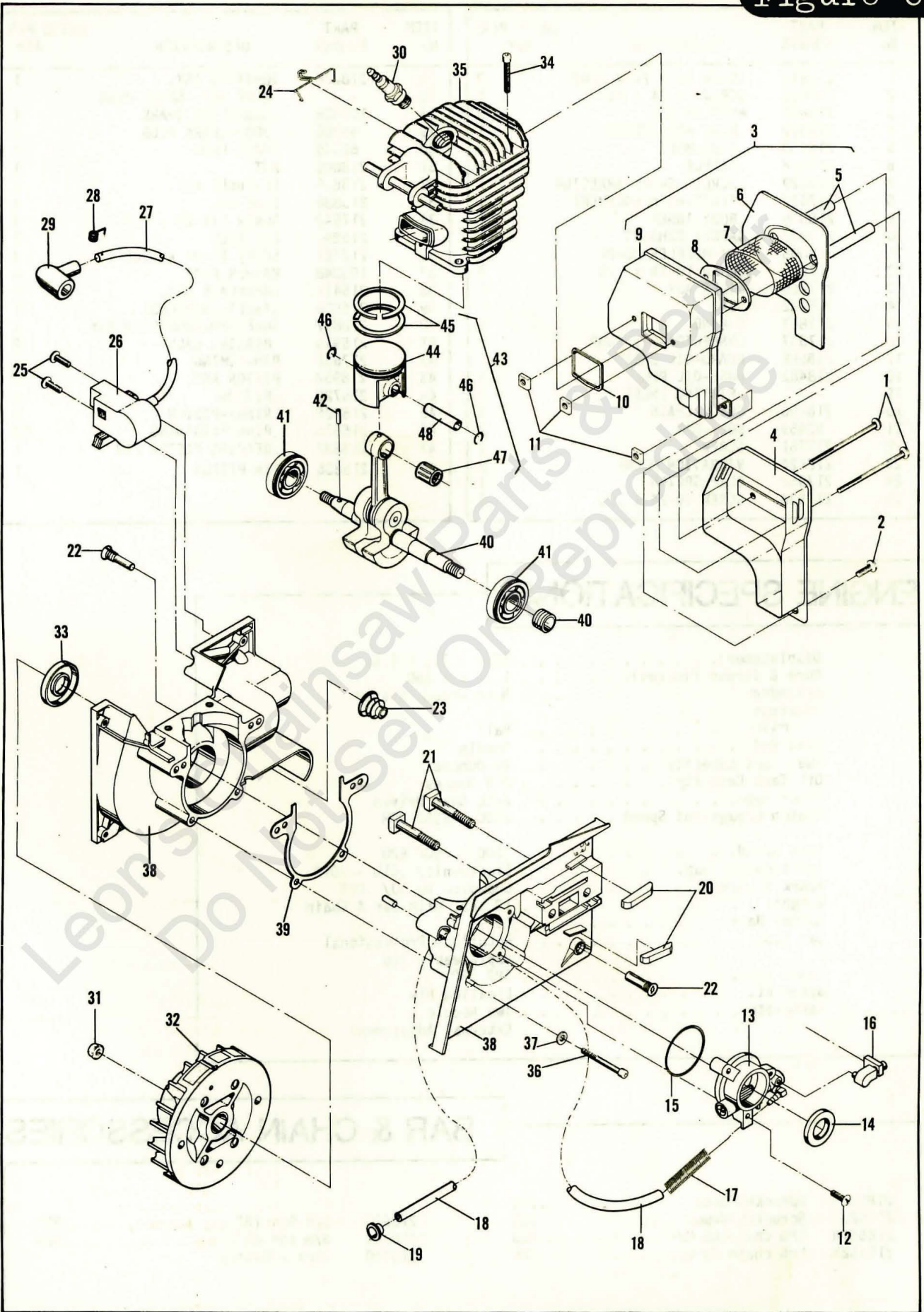




FIGURE 6 POWERHEAD ASSEMBLY

ITEM NO.	PART NUMBER	DESCRIPTION	UNITS PER ASY.	ITEM NO.	PART NUMBER	DESCRIPTION	UNITS PER ASY.
1	217942	SCREW 10 x 24 x 2.62	2	26	218236	IGNITION ASY.	1
2	217935	SCREW 10-24 x 50	1	27	- -	.WIRE ASY.-SPARK PLUG	
3	218633	MUFFLER ASY.	1	28	102556	.CONNECTOR SPARK	1
4	218099	.BODY ASY.-OUTER	1	29	95266	.BOOT-SPARK PLUG	1
5	218030	.TUBE-BOLT	2	30	62345	SPARK PLUG	1
6	218028	.BAFFLE	1	31	218042	NUT	1
7	217629	.SCREEN-SPARK ARRESTOR	1	32	218635	FLYWHEEL ASY.	1
8	217627	.PLATE-REINFORCEMENT	1	33	215888	SEAL-OIL	1
9	218076	.BODY-INNER	1	34	217943	SCREW 1/4-20 x 1.0	4
10	215947	GASKET-EXHAUST	1	35	215890	CYLINDER	1
11	218005	NUT-MUFFLER 10-24	3	36	217721	SCREW 10-24 x 1.62	4
12	217936	SCREW 10-24 x .75	3	37	105048	WASHER-FLAT	4
13	217266	OILER ASY.	1	38	216477	CRANKCASE ASY.	1
14	215892	SEAL	1	39	216508	GASKET-CRANKCASE	1
15	217867	O-RING	1	40	218897	SHAFT/ROD/WORMGEAR ASY.	1
16	217557	CONNECTOR-OIL PUMP	1	41	215946	.BEARING BALL	2
17	218669	GUARD-OIL BASE	1	42	217632	PIN-TIMING	1
18	218482	HOSE-OIL PUMP	1	43	218952	PISTON ASY.	1
19	- -	.FITTING INLET	1	44	215726	.PISTON	1
20	218196	GUIDE-CHAIN	2	45	215825	.RINGS-PISTON	2
21	92459	BOLT-BAR	2	46	215876	.RING RETAINING	2
22	217781	SCREW	2	47	215837	.BEARING-PISTON PIN	1
23	218124	VIBRATION MOUNT	2	48	215836	PIN-PISTON	1
24	217962	CLIP-SPRING	1				
25	217936	SCREW 10-24 x .75	2				

## ENGINE SPECIFICATIONS

Displacement. . . . . 50cc - 3.1 C.I.D.  
 Bore & Stroke (Inches). . . . . 1.72 x 1.260  
 Cylinder. . . . . Hard Chrome Plated  
 Bearings:  
     Main. . . . . Ball  
     Conn Rod. . . . . Needle  
 Fuel Tank Capacity. . . . . 20 Ounces  
 Oil Tank Capacity . . . . . 7.5 Ounces  
 Oiler Type. . . . . Auto Gear Driven  
 Clutch Engagement Speed . . . . . 2900 - 3350 RPM  
  
 Idle Speed. . . . . 2200 - 2500 RPM  
 Ignition/Air Gap. . . . . Electronic/ .010 - .012  
 Spark Plug/Gap. . . . . Champion DJ 8J/ .025  
 Weight. . . . . 13 Lbs. With Bar & Chain  
 Cutter Bars . . . . . 16" - 24"  
 Bar Type. . . . . McCulloch Professional  
                     Replaceable Tip  
 Chain Type. . . . . SPR 370  
 Sprocket. . . . . Floating Rim  
 Carburetor. . . . . Two Needle  
                     External Adjustment

## BAR & CHAIN ACCESSORIES

218928	Sprocket/drum	375		
218925	Sprocket/drum	325	218923	S/M Bar 16".....325
218551N	SPG chain 68 C/L	325	218924	S/M Bar 20".....325
218552N	SPG chain 79 C/L	325	218740	Tool - Clutch