

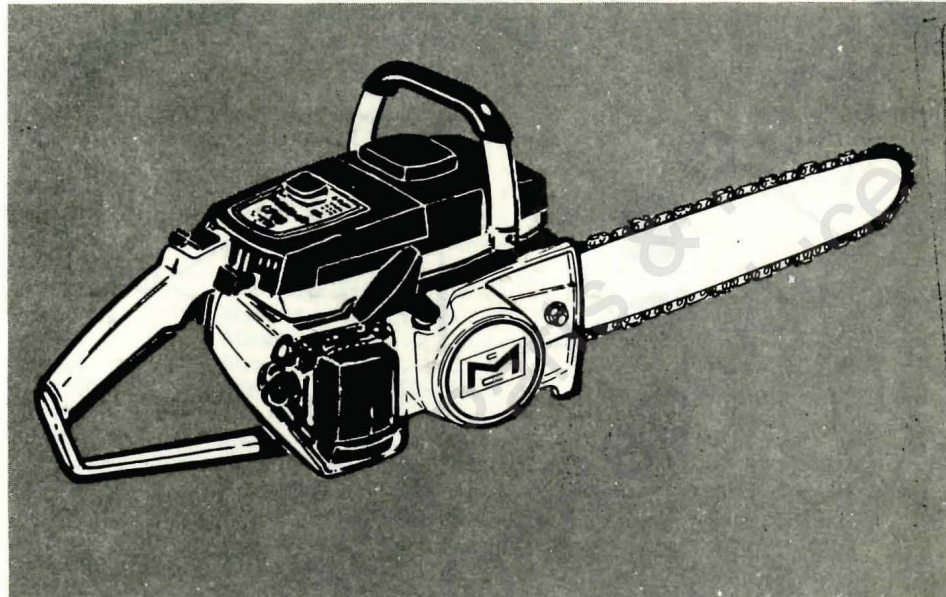
CP 70 CHAIN SAW

MODEL NO. 600440 SERIAL NOS. PREFIXED 11-

12-

13-

ILLUSTRATED PARTS LIST



MAY 1970

The policy of McCulloch Corporation is one of continual improvement in design, manufacturing and engineering advancement wherever possible to assure still finer two-cycle power tools. Hence, specifications, equipment, colors, design and manufacturer's suggested list prices are subject to change without notice and McCulloch Corporation reserves the right to make such changes without prior notification or obligation to backfit or supply backfit components for units previously shipped from the factory.

	Page
Figure 1. General	2
Figure 2. Clutch Guard & Starter Assembly	5
Figure 3. Fuel Tank Assembly	6
Figure 4. Carburetor Assembly	8
Figure 5. Flywheel & Ignition System	10
Figure 6. Powerhead & Oiler Assemblies	12

 **McCULLOCH**

CP 70

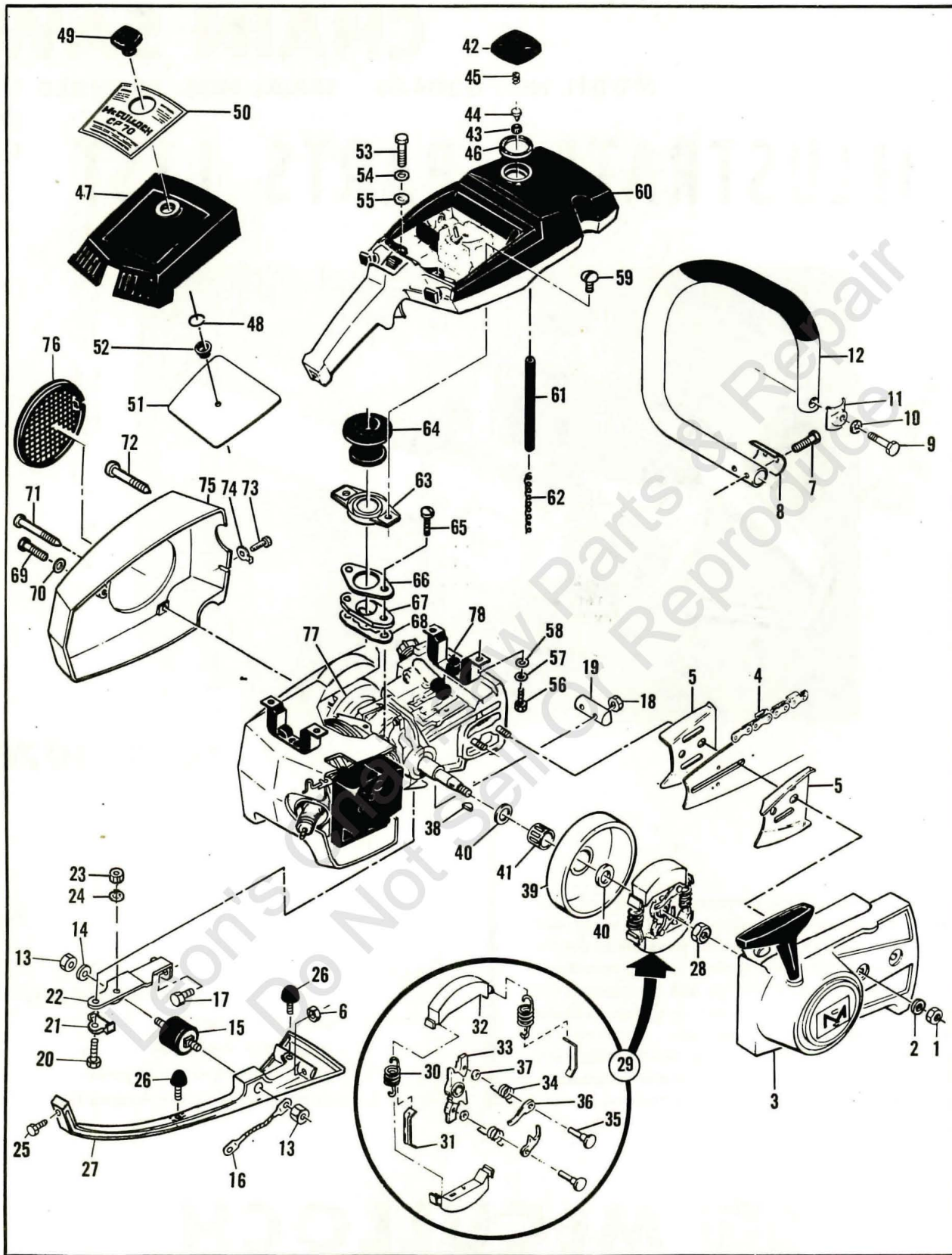


Figure 1. General

FIGURE 1. GENERAL

Item No.	Part Number	Description	Units Per Assy	Usable on Code								
CP 70 - Usable on Code												
<table border="1"> <thead> <tr> <th>Letter</th> <th>A</th> <th>B</th> <th>C</th> </tr> </thead> <tbody> <tr> <td>Serial Numbers</td> <td>Prefixed 11-</td> <td>Prefixed 12-</td> <td>Prefixed 13-</td> </tr> </tbody> </table>					Letter	A	B	C	Serial Numbers	Prefixed 11-	Prefixed 12-	Prefixed 13-
Letter	A	B	C									
Serial Numbers	Prefixed 11-	Prefixed 12-	Prefixed 13-									
1	110454	Nut - Hex 5/16-24	2	ALL								
2	100440	Washer - 5/16	2	ALL								
3		Clutch Guard & Starter Assy (See Figure 2)		ALL								
4		Bar & Chain Assy	1	ALL								
5	64325	Plate - Bar protector	2	ALL								
6	101326	Nut - Hex 10-24	2	ALL								
7	110552	Screw - Hex hd 10-24 x 1-1/4	2	ALL								
8	69645	Clamp - Frame	1	ALL								
9	102130	Screw - Hex hd 1/4-20 x 1-1/2	1	ALL								
10	100153	Lockwasher - 1/4	1	ALL								
11	63484	Clamp - Frame	1	ALL								
12	83056	Frame & Grip Assy	1	A,B								
	83560	Frame & Grip Assy	1	C								
13	105352	Nut - Hex 1/4-20	2	A								
	103242	Nut - Hex 1/4-20	2	B,C								
14	100005	Washer - 1/4	1	ALL								
15	69589	Mount - Lower	1	ALL								
16	83828	Strap - Ground	1	ALL								
17	102760	Screw - Hex hd 10-24 x 1	2	ALL								
18	101326	Nut - Hex 10-24	2	ALL								
19	69596	Plug - Nut retainer	1	ALL								
20	110566	Screw - Hex hd 12-24 x 5/8	1	ALL								
21	68508	Lockplate	1	ALL								
22	83112	Bracket - Lower mount	1	ALL								
23	105367	Nut - Hex 10-24	1	A,B								
24	101194	Lockwasher - #10	1	A,B								
25	101977	Screw - Fil hd 1/4-20 x 3/4	1	ALL								
26	*83111	Bumper - Lower	2	C								
27	83110	Brace - Frame	1	ALL								
28	110594	Nut - Hex 3/8-24	1	ALL								
29	83224	Clutch Assy	1	A								
	83656	Clutch Assy	1	B,C								
30	83223	. Spring - Clutch	1	A								
	66384	. Spring - Clutch	2	B,C								
31	64583	. Retainer - Spring	2	ALL								
32	67233	. Shoe - Clutch	2	ALL								
33	83671	. Rotor Assy	1	ALL								
34	68837	. Spring - Pawl	2	A								
	83654	. Spring - Pawl	2	B,C								
35	67112	. Rivet	2	A								
	83653	. Rivet	2	B,C								
36	64857	. Pawl - Starter	2	A								
	24093	. Pawl - Starter	2	B,C								
37	65473	. Washer - Special	2	ALL								
38	103879	Key - Woodruff	1	ALL								
39	65370	Kit - Sprocket & Drum	1	ALL								
40	61692	. Shim - Sprocket	2	ALL								
41	110330	Bearing - Sprocket	1	ALL								
42	68531	Cap Assy - Fuel	1	ALL								
43	68533	. Plug	1	ALL								
44	63041	. Valve	1	ALL								
45	63040	. Spring	1	ALL								
46	69767	. Gasket	1	ALL								
47	69840	Cover Assy - Air cleaner	1	ALL								

* One bumper, installed on lower frame bracket, used on models coded "A" and "B"

FIGURE 1. GENERAL (Cont.)

Item No.	Part Number	Description	Units Per Assy	Usable on Code
48	110565	. Ring - Retaining	1	ALL
49	68529	. Knob - Cover	1	ALL
50	83460	Nameplate	1	ALL
51	69845	Filter Assy - Air	1	ALL
52	68528	. Grommet	1	ALL
53	102388	Screw - Hex hd 10-24 x 5/8	2	ALL
54	101194	Lockwasher - #10	2	ALL
55	100002	Washer - #10	2	ALL
56	102861	Screw - Hex hd 1/4-20 x 5/8	2	ALL
57	100153	Lockwasher - 1/4	2	ALL
58	100005	Washer - 1/4	2	ALL
59	104071	Screw - Pan hd 8-32 x 5/16	2	ALL
60		Fuel Tank Assy (See Figure 3)		ALL
61	69598	Line - Pulse	1	ALL
62	67944	Spring - Pulse line	1	ALL
63	83122	Clamp Assy - Upper boot	1	ALL
64	69647	Boot - Port	1	ALL
65	104396	Screw - Pan hd 10-24 x 3/4	2	ALL
66	69759	Clamp - Boot	1	ALL
67	69646	Insulator - Inlet	1	ALL
68	69650	Gasket - Insulator	1	ALL
69	104534	Screw - Skt hd 10-24 x 1-3/8	1	ALL
70	24236	Washer - Special	1	ALL
71	62978	Screw - Special	1	ALL
72	69954	Screw - Special	1	ALL
73	102762	Screw - Hex hd 10-24 x 1/2	1	ALL
74	69890	Lockplate	1	ALL
75	- 83520	Kit - Fan housing	1	ALL
76	- 55615	. Guard - Flywheel	1	ALL
77		Flywheel & Ignition System (See Figure 5)		ALL
78		Powerhead & Oiler Assemblies (See Figure 6)		ALL

Part numbers which have changed since the previous printing of the illustrated parts list covering these saws, are indicated by a dash (-) preceding the new part number.

Illustrated Parts List, P/N 84402, supersedes and cancels all previous lists issued for the Model CP 70 saw. Discard the following lists:

- IPL 83067
- IPL 83716

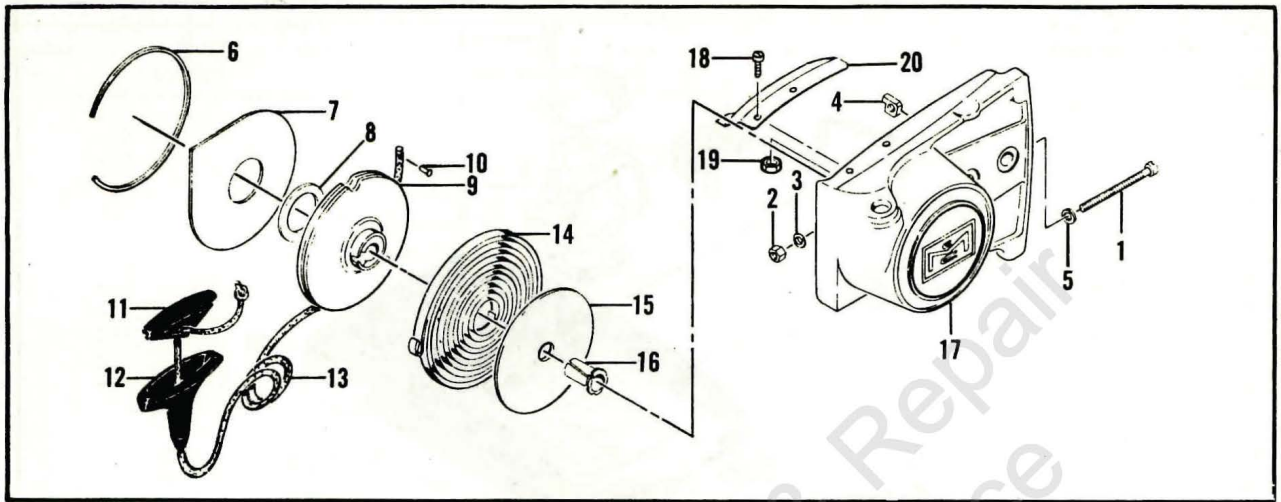


FIGURE 2. CLUTCH GUARD AND STARTER ASSEMBLY

Item No.	Part Number	Description	Units Per Assy	Usable on Code
CP 70 - Usable on Code				
		Letter	A	B
		Serial Numbers	Prefix 11-	Prefix 12- Prefix 13-
	83850	Clutch Guard Assy	1	ALL
1	102144	. Screw - Bar adjusting	1	ALL
2	102067	. Nut - Hex 10-24	1	ALL
3	110387	. Washer - Wavey	1	ALL
4	61705	. Nut - Bar adjusting	1	ALL
5	110264	. Washer - 3/16	1	ALL
6	67205	. Retainer - Shield	1	ALL
7	63985	. Shield - Dust	1	ALL
8	63986	. Washer - Thrust	1	ALL
9	83651	. Drum - Starter	1	ALL
10	110470	. Rivet - Rope	1	ALL
11	62191A	. Insert - Handle	1	ALL
12	62190A	. Handle - Starter	1	ALL
13	69964	. Rope - Starter	1	ALL
14	68626	. Spring - Rewind	1	A
	83334	. Spring - Rewind	1	B,C
15	63987	. Shield - Spring	1	ALL
16	61635A	. Bushing - Nyliner	1	ALL
17	83569	. Guard - Clutch	1	ALL
18	110385	Screw - Pan hd 8-32 x 3/8	2	ALL
19	100955	Nut - Hex 8-32	2	ALL
20	83064	Guard - Sawdust	1	ALL

CP 70

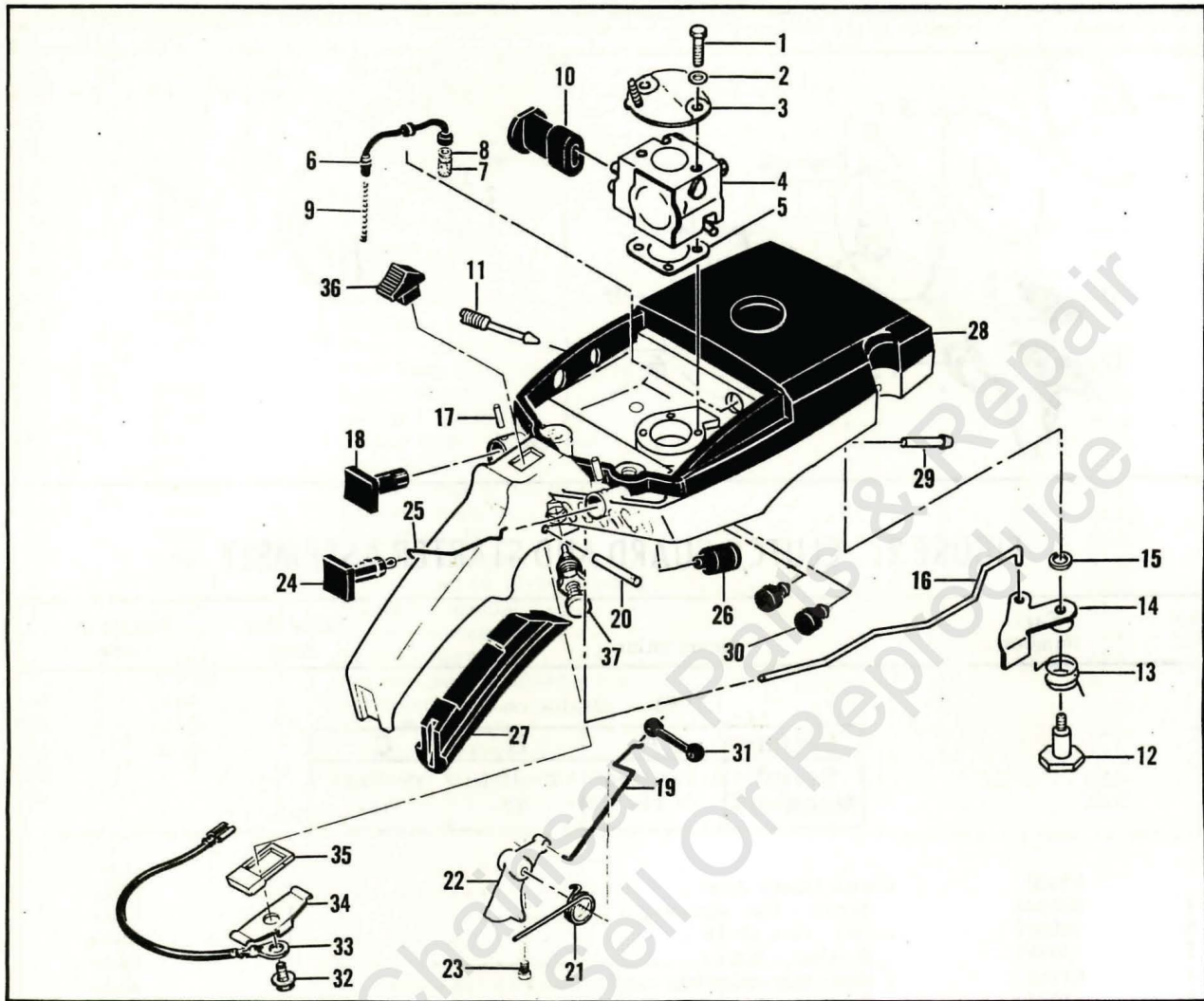


Figure 3. Fuel Tank Assembly

FIGURE 3. FUEL TANK ASSEMBLY

Item No.	Part Number	Description	Units Per Assy	Usable on Code								
CP 70 - Usable on Code												
<table border="1"> <thead> <tr> <th>Letter</th> <th>A</th> <th>B</th> <th>C</th> </tr> </thead> <tbody> <tr> <td>Serial Numbers</td> <td>Prefixed 11-</td> <td>Prefixed 12-</td> <td>Prefixed 13-</td> </tr> </tbody> </table>					Letter	A	B	C	Serial Numbers	Prefixed 11-	Prefixed 12-	Prefixed 13-
Letter	A	B	C									
Serial Numbers	Prefixed 11-	Prefixed 12-	Prefixed 13-									
1	110551	Screw - Hex hd 10-24 x 2-1/8	2	ALL								
2	101194	Lockwasher - #10	2	ALL								
3	83204	Bracket Assy	1	ALL								
4		Carburetor Assy (See Figure 4)		ALL								
5	83059	Gasket - Carburetor	1	ALL								
6	64848	Hose Assy - Fuel	1	ALL								
7	63932	. Filter - Fuel	1	ALL								
8	100440	. Washer	1	ALL								
9	67944	Spring - Hose stiffener	1	ALL								
10	69629	Boot - Carburetor mix	1	ALL								
11	67271	Screw - Idle speed adjustment	1	ALL								
12	69594	Pivot - Oiler lever	1	ALL								
13	69781	Spring - Oiler lever	1	ALL								
14	69825	Lever Assy - Oiler	1	ALL								
15	105048	Washer - 3/16	1	ALL								
16	69802	Rod - Oiler	1	ALL								
17	105673	Pin - Roll 3/32 x 9/16	2	ALL								
18	63044	Button - Oiler	1	ALL								
19	69632	Rod - Throttle	1	ALL								
20	110378	Pin - Roll 3/16 x 15/16	1	ALL								
21	65734	Spring - Throttle return	1	ALL								
22	67224	Trigger	1	ALL								
23	110537	Screw - Fil hd 8-36 x 1/2	1	ALL								
24	69630	Button - Choke	1	ALL								
25	69631	Rod - Choke	1	ALL								
26	69597	Boot - Control rod	2	ALL								
27	64872	Grip - Handle	1	ALL								
28	69807	Tank Assy - Fuel	1	ALL								
29	69600	. Nipple - Pulse line	1	ALL								
30	- 84272	. Bumper - Mount	2	ALL								
31	69043	Snubber - Rod	1	ALL								
32	103672	Screw - Fil hd 8-32 x 1/2 (SEMS)	1	ALL								
33	83661	Wire Assy - Stop switch	1	ALL								
34	62451	Contact - Switch	1	ALL								
35	62950A	Base - Switch	1	ALL								
36	62951	Button - Switch	1	ALL								
37	83051	Latch Assy - Throttle	1	ALL								

CP 70

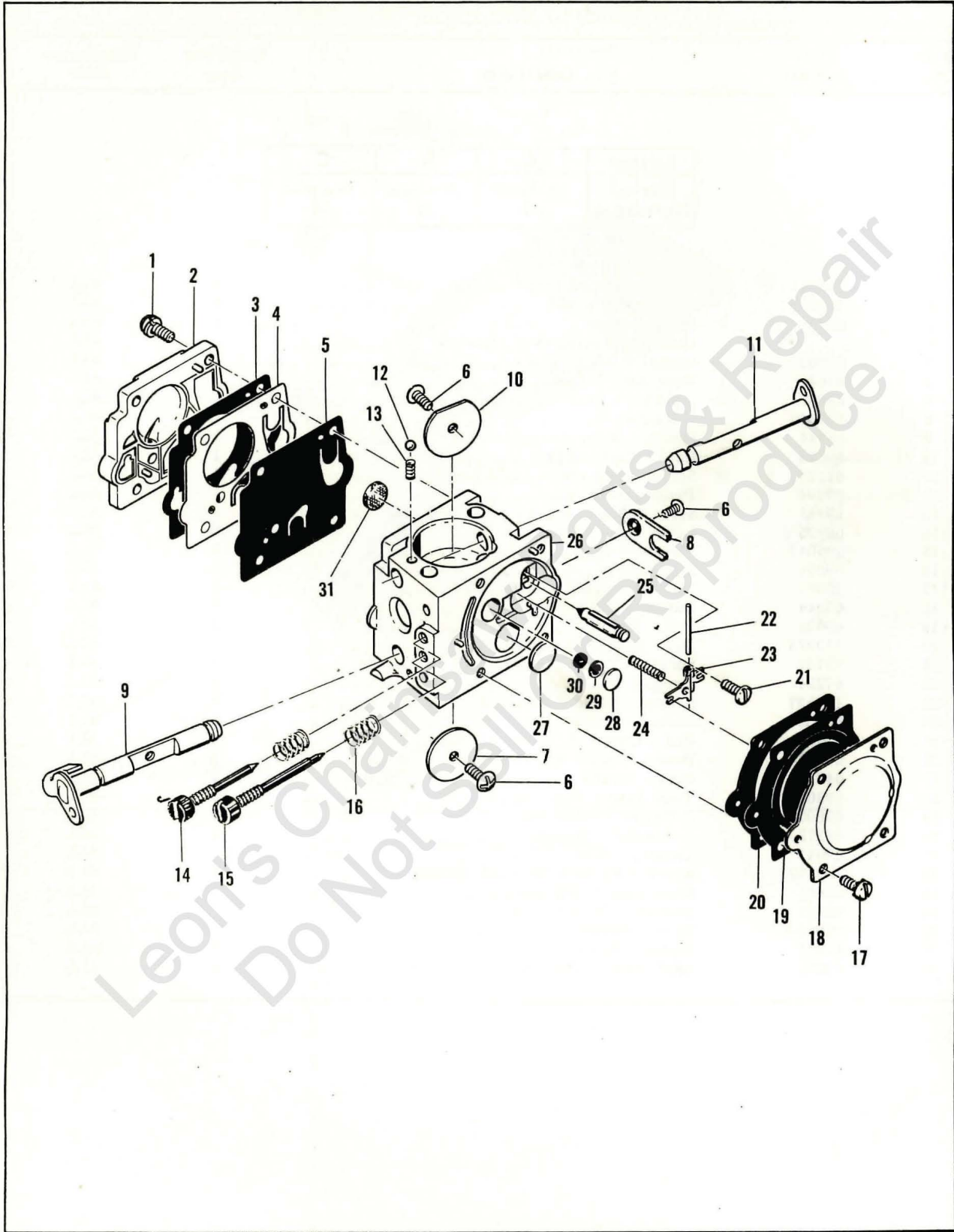


Figure 4. Carburetor Assembly

FIGURE 4. CARBURETOR ASSEMBLY

Item No.	Part Number	Description	Units Per Assy	Usable on Code								
CP 70 - Usable on Code												
<table border="1"> <thead> <tr> <th>Letter</th> <th>A</th> <th>B</th> <th>C</th> </tr> </thead> <tbody> <tr> <td>Serial Numbers</td> <td>Prefixed 11-</td> <td>Prefixed 12-</td> <td>Prefixed 13-</td> </tr> </tbody> </table>					Letter	A	B	C	Serial Numbers	Prefixed 11-	Prefixed 12-	Prefixed 13-
Letter	A	B	C									
Serial Numbers	Prefixed 11-	Prefixed 12-	Prefixed 13-									
	69942	Carburetor Assy	1	ALL								
1	67501	. Screw - Pump cover	4	ALL								
2	83760	. Cover - Pump	1	ALL								
3	* 67495	. Gasket - Cover	1	ALL								
4	* 67498	. Diaphragm - Check valve	1	ALL								
5	* 83114	. Diaphragm - Fuel pump	1	ALL								
6	* 47690	. Screw - Plate	3	ALL								
7	83762	. Plate - Throttle	1	ALL								
8	67489	. Clip - Shaft	1	ALL								
9	67486	. Shaft Assy - Throttle	1	ALL								
10	67490	. Plate - Choke	1	ALL								
11	67488	. Shaft Assy - Choke	1	ALL								
12	* 100302	. Ball - Choke friction	1	ALL								
13	* 67504	. Spring - Choke friction	1	ALL								
14	* 68104	. Needle - High speed	1	ALL								
15	* 68105	. Needle - Idle	1	ALL								
16	* 67502	. Spring - Needle	2	ALL								
17	70798	. Screw - Diaphragm	4	ALL								
18	83761	. Cover - Diaphragm	1	ALL								
19	* 67499	. Diaphragm - Metering	1	ALL								
20	* 67496	. Gasket - Diaphragm	1	ALL								
21	* 67500	. Screw - Lever pin	1	ALL								
22	* 67508	. Pin - Lever	1	ALL								
23	* 67509	. Lever - Inlet	1	ALL								
24	* 67503	. Spring - Lever	1	ALL								
25	* 67491	. Valve - Needle	1	ALL								
26	83759	. Body Assy - Carburetor	1	ALL								
27	* 71690	. Plug - 3/8	1	ALL								
28	* 69506	. Plug - 5/16	1	ALL								
29	69203	. Seat Assy	1	ALL								
30	69204	. Valve	1	ALL								
31	* 67507	. Screen - Fuel	1	ALL								
	* 67482	Gasket Set										
	83764	Repair Kit										

* Indicates parts included in Repair Kit, P/N 83764

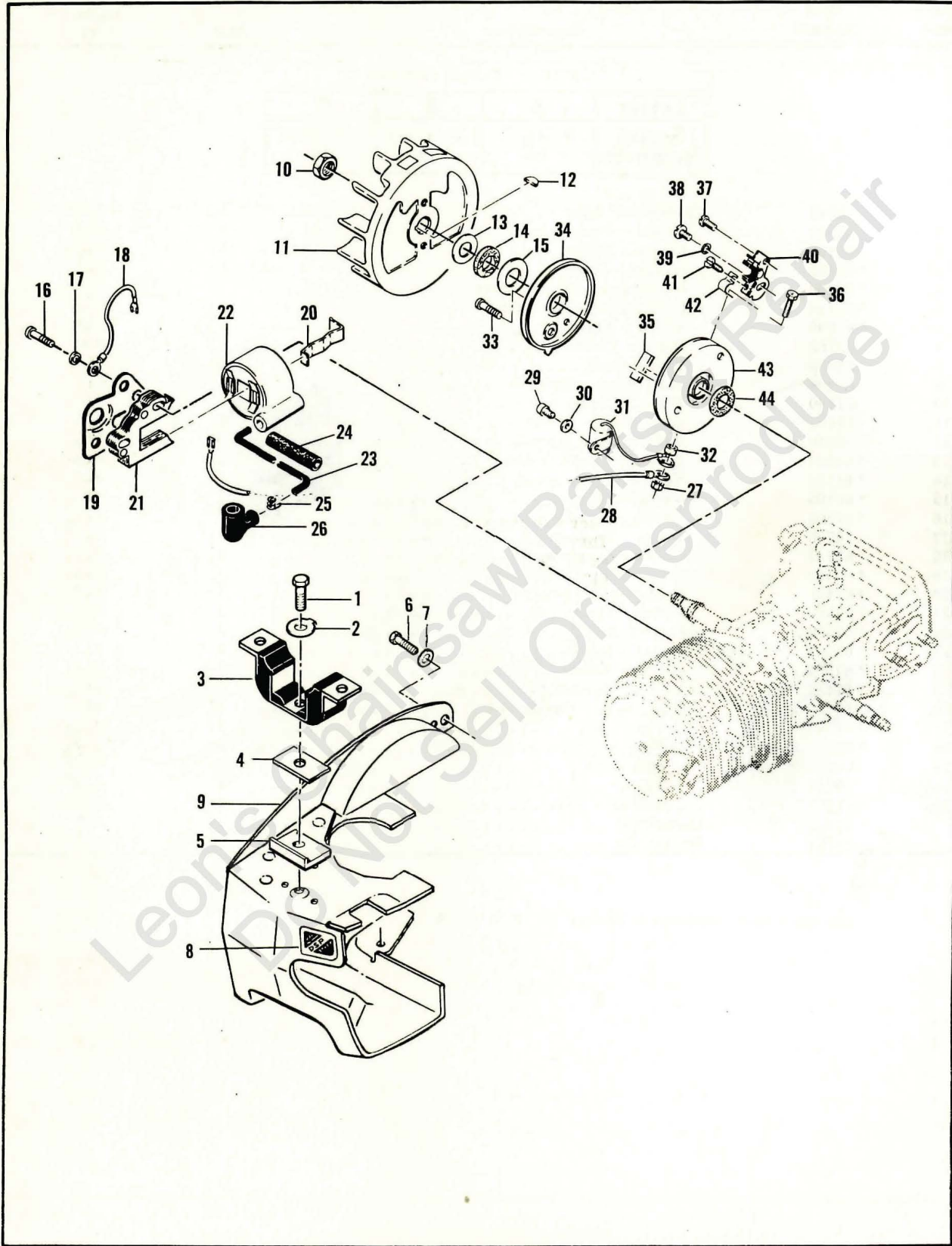


Figure 5. Flywheel and Ignition System

FIGURE 5. FLYWHEEL AND IGNITION SYSTEM

Item No.	Part Number	Description	Units Per Assy	Usable on Code								
CP 70 - Usable on Code												
		<table border="1" style="width: 100%; border-collapse: collapse;"> <thead> <tr> <th style="width: 25%;">Letter</th> <th style="width: 25%;">A</th> <th style="width: 25%;">B</th> <th style="width: 25%;">C</th> </tr> </thead> <tbody> <tr> <td>Serial Numbers</td> <td>Prefixed 11-</td> <td>Prefixed 12-</td> <td>Prefixed 13-</td> </tr> </tbody> </table>	Letter	A	B	C	Serial Numbers	Prefixed 11-	Prefixed 12-	Prefixed 13-		
Letter	A	B	C									
Serial Numbers	Prefixed 11-	Prefixed 12-	Prefixed 13-									
1	-83811	Screw - Special	1	ALL								
2	69924	Lockplate	1	ALL								
3	69588	Mount - Rear	1	ALL								
4	-84246	Insulator - Rear mount	1	C								
5	83693	Adaptor - Rear mount	1	A,B								
	-84245	Adaptor - Rear mount	1	C								
6	102219	Screw - Fil hd 8-32 x 1/4	1	ALL								
7	100057	Lockwasher - #8	1	ALL								
8	-84242	Emblem - D.S.P.	1	ALL								
9	69841	Shroud Assy	1	ALL								
10	110594	Nut - Hex 3/8-24	1	ALL								
11	67845	Flywheel Assy	1	ALL								
12	103879	Key - Woodruff	1	ALL								
13	67057	Washer - Thrust	1	ALL								
14	67056	Seal - Breaker box cover	1	ALL								
15	67054	Washer - Thrust	1	ALL								
16	103947	Screw - Hex hd 10-24 x 1 (SEMS)	2	ALL								
17	100003	Washer - #10	1	ALL								
18	62819	Wire Assy - Ground	1	ALL								
19	69628	Bracket - Mounting	1	ALL								
20	51253	Retainer - Coil	1	ALL								
21	68164	Lamination Assy	1	ALL								
22	69798	Coil and Terminal Assy	1	ALL								
23	69966	. . Wire Assy - Spark plug	1	ALL								
24	67127	. . Sleeve - Wire	1	ALL								
25	62932	. . Connector - Spark plug	1	ALL								
26	62926	. . Boot - Spark plug	1	ALL								
27	100298	Nut - Hex 6-32	1	ALL								
28	-69344	Wire Assy - Primary	1	ALL								
29	103672	Screw - Fil hd 8-32 x 1/2 (SEMS)	1	ALL								
30	100080	Washer - #8	1	ALL								
31	-67960	Condenser	1	ALL								
32	62365	Spacer - Breaker box	1	ALL								
33	110349	Screw - Rd hd 8-32 x 3/4	1	ALL								
34	62362	Cover - Breaker box	1	ALL								
35	54184	Wiper - Cam	1	ALL								
36	110346	Screw - Hex hd 6-32 x 3/4	1	ALL								
37	100934	Screw - Rd hd 8-32 x 3/8	1	ALL								
38	110445	Screw - Truss hd 8-32 x 3/8	1	ALL								
39	105976	Washer - #8	1	ALL								
40	66231	Breaker Assy	1	ALL								
41	110489	Screw - Pan hd 6-32 x 7/16 s/t	1	ALL								
42	83126	Strap - Conduction	1	ALL								
43	83125	Box - Breaker	1	ALL								
44	67051	Seal - Breaker box	1	ALL								

CP 70

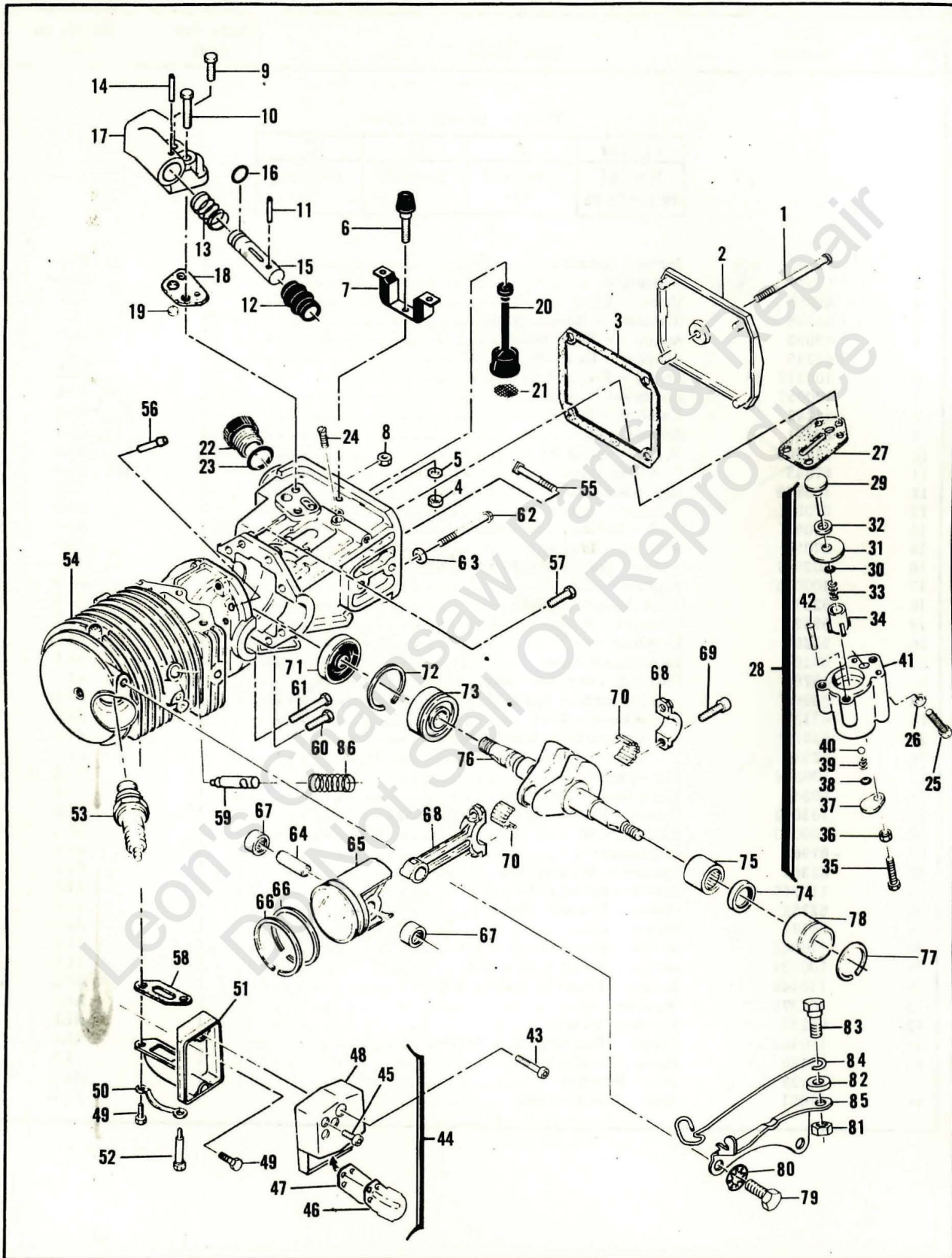


Figure 6. Powerhead and Oiler Assemblies

FIGURE 6. POWERHEAD AND OILER ASSEMBLIES

Item No.	Part Number	Description	Units Per Assy	Usable on Code								
CP 70 - Usable on Code												
<table border="1" style="width: 100%; border-collapse: collapse;"> <thead> <tr> <th style="width: 25%;">Letter</th> <th style="width: 25%;">A</th> <th style="width: 25%;">B</th> <th style="width: 25%;">C</th> </tr> </thead> <tbody> <tr> <td>Serial Numbers</td> <td>Prefixed 11-</td> <td>Prefixed 12-</td> <td>Prefixed 13-</td> </tr> </tbody> </table>					Letter	A	B	C	Serial Numbers	Prefixed 11-	Prefixed 12-	Prefixed 13-
Letter	A	B	C									
Serial Numbers	Prefixed 11-	Prefixed 12-	Prefixed 13-									
1	110291	Screw - Pan hd 10-24 x 2-5/8	1	ALL								
2	63072	Cover - Oil tank	1	ALL								
3	62116	Gasket - Cover	1	ALL								
4	101143	Nut - Hex 1/4-20	1	ALL								
5	102523	Washer - 1/4	1	ALL								
6	69832	Bumper - Front	1	ALL								
7	69810	Mount - Front	1	ALL								
8	100955	Nut - Hex 8-32	1	ALL								
9	110623	Screw - Fil hd 8-32 x 1/2	1	ALL								
10	105245	Screw - Fil hd 8-32 x 1 (SEMS)	1	ALL								
11	105673	Pin - Roll 3/32 x 9/16	1	ALL								
12	69586	Boot - Plunger	1	ALL								
13	69585	Spring - Plunger	1	ALL								
14	101556	Pin - Roll 1/8 x 5/8	1	ALL								
15	69584	Plunger - Pump	1	ALL								
16	101056	"O" Ring	1	ALL								
17	69582	Body - Oil pump	1	ALL								
18	62230	Gasket - Oil pump	1	ALL								
19	62909	Valve - Oiler	1	ALL								
20	62123B	Hose Assy - Oil	1	ALL								
21	51506	Screen - Hose	1	ALL								
22	68809	Cap - Oil tank	1	ALL								
23	101148	"O" Ring	1	ALL								
24	110333	Screw - Oval hd 8-32 x 1/2	3	A,B								
25	- 102660	Screw - Skt hd 10-24 x 7/8	1	C								
26	- 24236	Washer - Special	1	C								
27	62274	Gasket - Pump	1	A,B								
	- 83790	Gasket - Pump	1	C								
28	83134	Pump Assy - Pulse	1	A,B								
	- 83786	Pump Assy - Pulse	1	C								
29	60260A	Piston Assy - Pump	1	ALL								
30	104001	"O" Ring	1	ALL								
31	60263	Ring - Piston	1	ALL								
32	60937	Washer - Teflon	1	ALL								
33	60259	Spring - Piston oiler	1	ALL								
34	62227	Sleeve - Adjustment	1	ALL								
35	110386	Screw - Hex hd 8-32 x 1	1	ALL								
36	100251	Nut - Hex 8-32	1	ALL								
37	62407	Cover - Outlet valve	1	ALL								
38	106104	"O" Ring	1	ALL								
39	62885A	Spring - Outlet valve	1	ALL								
40	102809	Ball - Outlet valve	1	ALL								
41	83128	Body Assy - Pump	1	A,B								
	- 83787	Body Assy - Pump	1	C								
42	- 110643	Screw - Set 8-32 x 7/16	1	C								
43	- 104560	Screw - Skt hd 10-24 x 1-1/2	2	A&L								
44	- 65532	Cover and Valve Assy	1	ALL								
45	110472	Screw - Skt hd 8-32 x 5/16	3	ALL								
46	- 83069	Stop - Reed valve	1	ALL								
47	64785	Valve - Reed	1	ALL								
48	65419	Cover Assy - Spark arrester	1	ALL								
49	- 110529	Screw - Hex hd 10-24 x 1/2	2	ALL								

FIGURE 6. POWERHEAD AND OILER ASSEMBLIES (Cont.)

Item No.	Part Number	Description	Units Per Assy	Usable on Code
50	67922	Lockplate	1	ALL
51	83106	Body and Duct Assy	1	ALL
52	68187	. Screw - Special	1	ALL
53	63432	Spark Plug	1	ALL
54	83222	Crankcase Assy	1	A,B
	-84174	Crankcase Assy	1	C
55	62065	. Bolt - Bar mounting	2	ALL
56	69600	. Nipple - Pulse line	1	ALL
57	110288	. Screw - Hex hd 8-32 x 3/4	2	ALL
58	*68149	. Gasket - Spark arrester	1	A,B
	-84007	. Gasket - Spark arrester	1	C
59	*83070	. Valve - D.S.P.	1	A,B
	-84315	. Valve - D.S.P.	1	C
60	110288	Screw - Hex hd 8-32 x 3/4	1	ALL
61	110618	Screw - Hex hd 8-32 x 1-3/8	1	ALL
62	62105	Screw Assy - Sealing	4	ALL
63	62842	. Washer - Sealing	4	ALL
64	69020	Pin - Piston	1	ALL
65	69030	Piston Assy	1	ALL
66	63290	. Ring Set - Piston	1	ALL
67	110590	. Bearing - Needle	2	ALL
68	83060	Connecting Rod Assy	1	ALL
69	61627A	. Screw - Special	2	ALL
70	63225	. Roller (set of 20)	1	ALL
71	-61618	Seal - Oil	1	ALL
72	63464	Ring - Snap	1	ALL
73	63429B	Bearing - Ball	1	ALL
74	-110260	Seal - Oil	1	ALL
75	104357	Bearing - Needle	1	ALL
76	63336	Crankshaft	1	ALL
77	63699	Ring - Bearing insert	1	ALL
78	63701	Insert - Bearing	1	ALL
79	-104738	Screw - Hex hd 10-24 x 1/2	2	ALL
80	101194	Lockwasher - #10	2	ALL
81	101191	Nut - Hex 10-24	1	ALL
82	83076	Spacer - Lever	1	ALL
83	83075	Pivot - Lever	1	ALL
84	83074	Lever - D.S.P.	1	ALL
85	83072	Bracket - D.S.P.	1	ALL
86	83071	Spring - D.S.P. valve	1	ALL

* Gasket, P/N 68149, and Valve, P/N 83070, are not included in Crankcase Assy, P/N 83222.

ACCESSORIES

Part Number	Description								
CP 70 - Usable on Code									
	<table border="1"> <thead> <tr> <th>Letter</th> <th>A</th> <th>B</th> <th>C</th> </tr> </thead> <tbody> <tr> <td>Serial Numbers</td> <td>Prefixed 11-</td> <td>Prefixed 12-</td> <td>Prefixed 13-</td> </tr> </tbody> </table>	Letter	A	B	C	Serial Numbers	Prefixed 11-	Prefixed 12-	Prefixed 13-
Letter	A	B	C						
Serial Numbers	Prefixed 11-	Prefixed 12-	Prefixed 13-						
69031	Piston Assy - 0.020 in. oversize								
63291	. Ring Set - 0.020 in. oversize.....								
110590	. Bearing - Needle (2)								
69032	Piston Assy - 0.030 in. oversize								
63292	. Ring Set - 0.030 in. oversize.....								
110590	. Bearing - Needle (2)								
63097	Spark Plug - AC CS 45T								
65778	Spark Plug - AC CS 41T								
83560	Frame & Grip Assy - Wrap-around								
63341A	Kit - Spike								
65712	Guide - Timing								
65325	Baffle - Spark arrestor								
63746	Scrench								
62827	Wrench - Screwdriver								
83673	Owner's Manual								

SERVICE SPECIFICATIONS

Spark Plug Gap -----	0.025 in.
Lamination Gap -----	0.010 to 0.015 in.
Breaker Point Gap -----	0.018 in.
Carburetor Adjustment	
Idle Needle - Preliminary adjustment 1 turn open.	
	Adjust for smooth idle and acceleration.
Main Needle - Preliminary adjustment 1 turn open.	
	Adjust for maximum power under load.
Torque Values	
Flywheel Nut -----	240 to 300 inch-pounds.
Clutch Nut -----	160 to 170 inch-pounds.
Connecting Rod Screws -----	65 to 70 inch-pounds.

The information contained in this Master Illustrated Parts List is based on original Illustrated Parts Lists, Engineering Records and the Master Parts Price List and is accurate to the best of our knowledge.

Each chain saw model is given a code letter. Whenever the code letter appears in the right hand column, the part is used on the engines of the model for which the code letter stands. When a part is used on all models covered in the Master Illustrated Parts List, the word "All" appears in the right-hand column instead of the code letters.

Names of parts have been checked and made to agree with the names given in the Master Parts Price List except in a very few cases where additional nomenclature was required.

The illustrations of the individual parts do not necessarily picture all the differences between parts with the same item number because the illustrations would be too complicated for use if they did. Instead, the illustration shows a representative part for each item number.



McCULLOCH



● MANUFACTURING ● SALES ● SERVICE ●

McCULLOCH CORPORATION

6101 WEST CENTURY BLVD., LOS ANGELES, CALIFORNIA 90045

INTERNATIONAL DIVISIONS:

LOS ANGELES, CALIF., P. O. BOX 45466

HONG KONG, B. C. C.: G. P. O. BOX 879

McCULLOCH OF CANADA LTD.

6338 VISCOUNT ROAD, MALTON, ONTARIO, CANADA

McCULLOCH OF EUROPE, N. V.

ANTOON SPINOYSTRAAT, 5, B-2800 MECHELEN, BELGIUM

McCULLOCH OF AUSTRALIA PTY., LTD.

P.O. BOX 223, SEVEN HILLS, N.S.W. 2147, AUSTRALIA