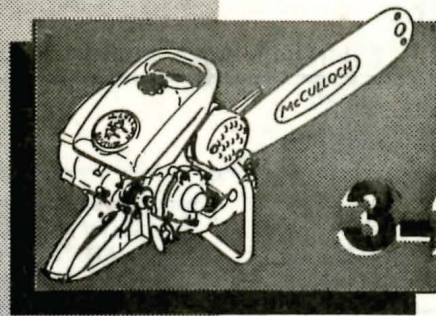
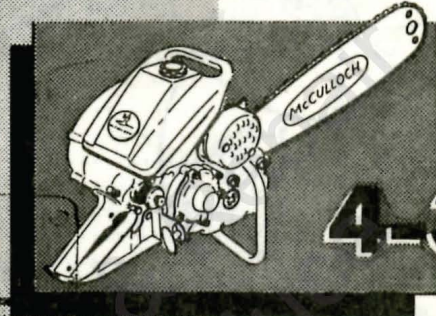


ILLUSTRATED PARTS LIST

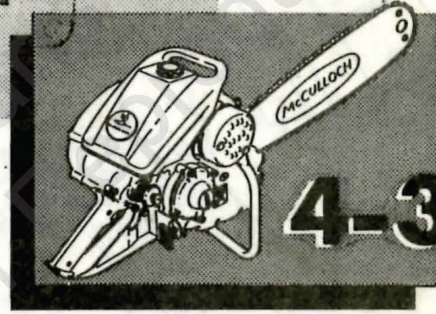
MASTER COPY
DO NOT REMOVE



3-25



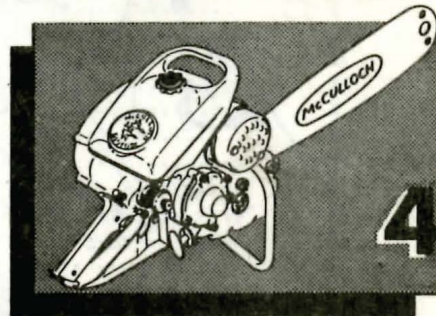
4-30



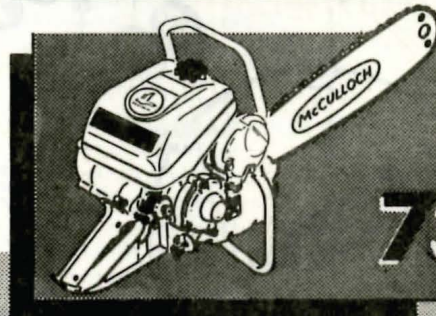
4-30A

This Master Illustrated Parts List gives the name, number and interchangeability between engines, of service and replacement parts which were used on or are presently available for installation on the listed chain saw models.

Information about the List and how to use it will be found on the back cover. Read the information before you start to use the List.



47



73

No. 56773



McCULLOCH CORPORATION
Los Angeles 45, California

3-25, 4-30 SERIES ENGINES

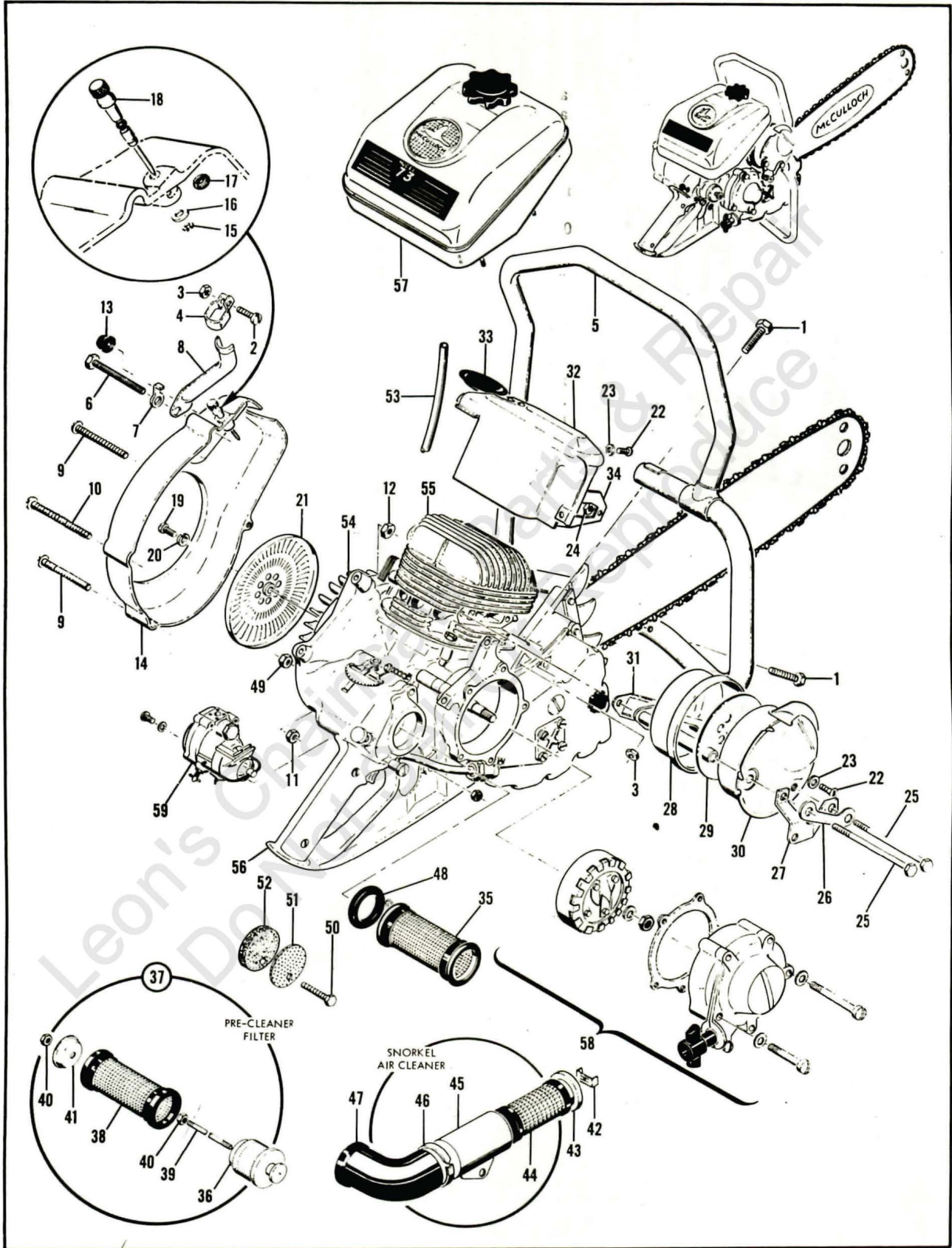


Figure 1. Model 3-25, 4-30, 4-30A, 47 and 73 Chain Saw Engines

3-25, 4-30 SERIES ENGINES

FIGURE 1. MODEL 3-25, 4-30, 4-30A, 47 AND 73 CHAIN SAW ENGINES.

FIG. & INDEX NO.	PART NO.	DESCRIPTION							UNITS PER ASSY	USABLE ON CODE
		1	2	3	4	5	6	7		
Code: "A" indicates parts used on Model 3-25 engines.										
"B" indicates parts used on Model 4-30 engines.										
"C" indicates parts used on Model 4-30A engines.										
"D" indicates parts used on Model 47 engines.										
"E" indicates parts used on Model 73 engines.										
"All" indicates parts used on all five models.										
1-1	102130	Screw - Hex hd 1/4-20 x 1-1/2 in. lg							3	All
-2	103266	Screw - Fil hd 1/4-20 x 3/4 in. lg							1	E
-3	101143	Nut - Hex 1/4-20							3	All
-4	18761A	Clamp							1	E
-5	28213	Frame Assembly							1	ABCD
	47333A	Frame and Spacer Assembly							1	E
-6	101998	Screw - Rd hd 1/4-20 x 2-1/4 in. lg							1	A
	101993	Screw - Rd hd 10-24 x 1-1/2 in. lg							1	CD
	102765	Screw - Hex hd 10-24 x 1-3/4 in. lg							1	BE
-7	28052A	Lockplate							1	E
-8	28606A	Support Assembly - Handle bar							1	E
-9	101994	Screw - Rd hd 10-24 x 1-3/4 in. lg							2	AB
	101993	Screw - Rd hd 10-24 x 1-1/2 in. lg							2	CDE
-10	101997	Screw - Rd hd 1/4-20 x 1-3/4 in. lg							1	All
-11	101191	Nut - Hex 10-24							1	All
-12	101326	Nut - Hex 10-24							1	BCD
	101191	Nut - Hex 10-24							1	AE
-13	19224	Grommet - Frame (Used only with original Frame #19225 and original Housing Assembly #19100A - Both no longer available)							1	A
-14	28316B	Fan Housing Assembly							1	All
-15	101913	Clip - Spring							1	All
-16	100004	Washer - Plain 1/4 in.							1	All
-17	28049	Spring - Ignition shut off							1	All
-18	28048A	Shaft - Ignition shut off							1	All
-19	101988	Screw - Fil hd 10-24 x 3/8 in. lg							1	All
-20	101194	Lockwasher - No. 10							1	All
-21	19007B	Guard - Sawdust							1	All
-22	101988	Screw - Fil hd 10-24 x 3/8 in. lg							2	All
-23	100002	Washer							2	AB
	100003	Washer - Plain No. 10							2	CDE
-24	101191	Nut - Hex 10-24							1	All
	47282	Muffler Assembly							1	All
-25	102172	Screw - Hex hd 1/4-20 x 4 in. lg							2	All
-26	28341A	Lockplate							1	All
-27	28822	Bracket							1	All
-28	28505	Bottom - Muffler							1	All
-29	47595	Baffle Assembly - Muffler							1	All
-30	28798	Top - Muffler							1	All
-31	28501	Gasket - Exhaust							1	All
-32	19851A	Shroud - Cylinder							1	AB
	28225A	Shroud - Cylinder							1	CD
	28782	Shroud - Cylinder							1	E
-33	19696A	Cover Assembly - Spark plug							1	All
-34	28222A	Jacket - Cylinder							1	All
-35	28750	Air Filter Assembly							1	E
	19792	Filter Assembly - Pre cleaner							1	ABCD
-36	19788	Body Assembly - Pre cleaner							1	ABCD
-37	19791	Air Filter and Rod Assembly							1	ABCD
-38	19483A	Filter Assembly - Air							1	ABCD
-39	19793	Rod - Air filter							1	ABCD
-40	101191	Nut - Hex 10-24							2	ABCD
-41	19510A	Retainer - Air filter							1	ABCD
	28623	Snorkel Air Cleaner							Alternate	BCDE
-42	103385	Nut							1	BCDE

3-25, 4-30 SERIES ENGINES

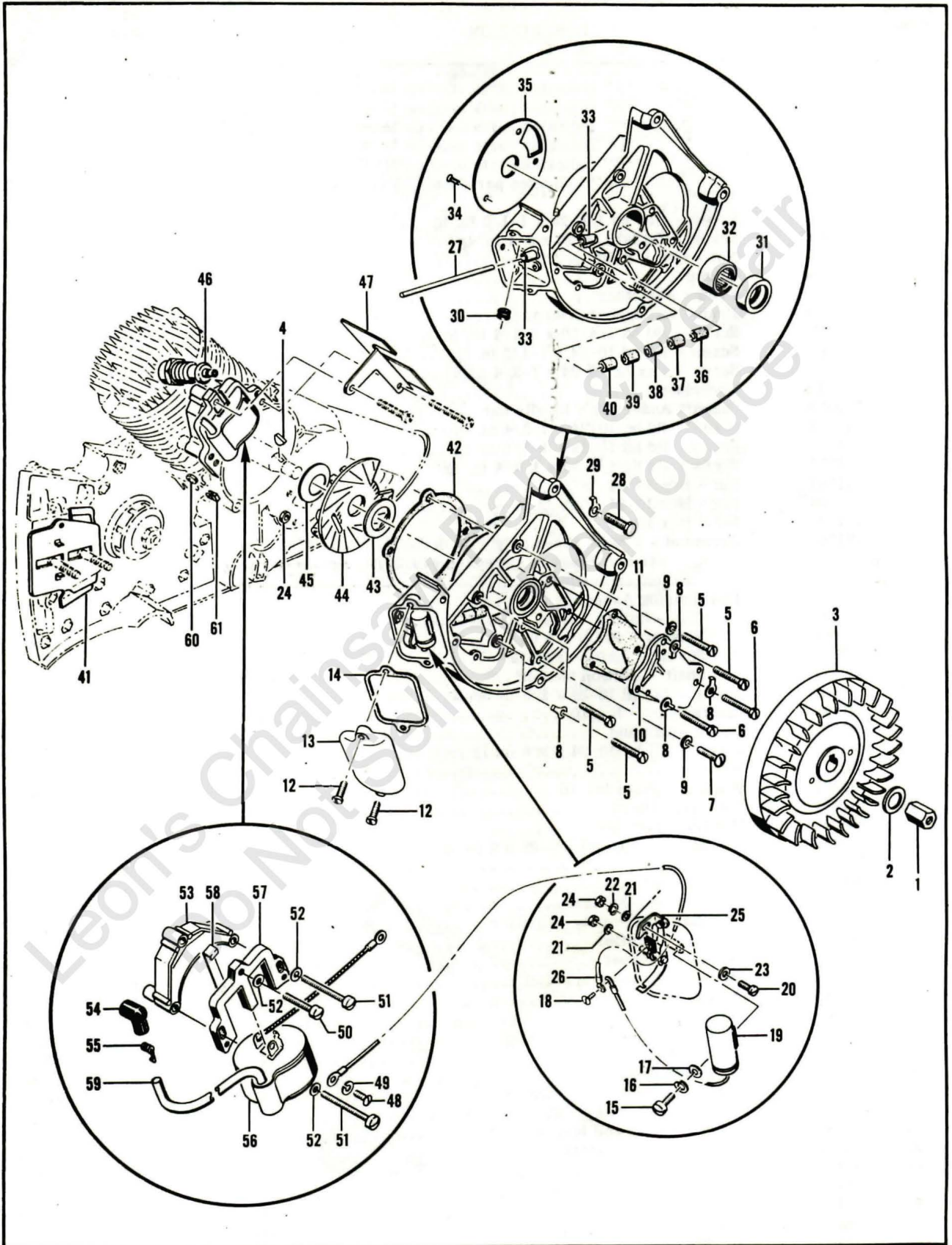


Figure 2. Ignition System, Flywheel, Crankcase Cover and Rotary Valve

3-25, 4-30 SERIES ENGINES

FIGURE 1. (CONT)

FIG. & INDEX NO.	PART NO.	DESCRIPTION							UNITS PER ASSY	USABLE ON CODE
		1	2	3	4	5	6	7		
1-43	28629	.	Cap						1	BCDE
-44	28639	.	Screen Assembly						1	BCDE
-45	28635	.	Tube Assembly						1	BCDE
-46	28636	.	Clamp						1	BCDE
-47	28622	.	Duct						1	BCDE
-48	28903		Gasket - Air cleaner cover						1	CDE
			Model 73 Air Passage Sealing Units						1	E
-49	101191	.	Nut - Hex 10-32						1	E
-50	28898	.	Bolt						1	E
-51	28897	.	Plate						1	E
-52	28896	.	Filter						1	E
-53	101271		Fuel Line						1	A
	19649A		Hose - Fuel delivery						1	BCDE
-54			Ignition System, Flywheel, Crankcase Cover and Rotary Valve (See figure 2)						1	All
-55			Cylinder, Piston and Gearcase (Model 3-25 only) (See figure 3) ..						1	A
			Cylinder, Piston and Gearcase (See figure 4)						1	BCDE
-56			Crankcase and Bar Adjusting Lockplate (Model 3-25 only) (See figure 5)						1	A
			Crankcase and Bar Adjusting Lockplate (See figure 6)						1	BCDE
-57			Fuel Tank (See figure 7)						1	All
-58			Starter and Clutch Assembly (See figure 8)						1	All
-59			Model 3-25 Carburetor (See figure 10)						1	A
			Model 4-30, 4-30A, 47 and 73 Carburetors (See figure 9)						1	BCDE

FIGURE 2. IGNITION SYSTEM, FLYWHEEL, CRANKCASE COVER AND ROTARY VALVE.

FIG. & INDEX NO.	PART NO.	DESCRIPTION							UNITS PER ASSY	USABLE ON CODE
		1	2	3	4	5	6	7		
Code: "A" indicates parts used on Model 3-25 engines. "B" indicates parts used on Model 4-30 engines. "C" indicates parts used on Model 4-30A engines. "D" indicates parts used on Model 47 engines. "E" indicates parts used on Model 73 engines. "All" indicates parts used on all five models.										
2-1	19521		Nut - Crankshaft						1	All
-2	101270		Washer						1	AB
	101271		Washer						1	CDE
-3	28345		Flywheel Assembly						1	All
-4	100199		Key - Woodruff No. 404						1	All
-5	102126		Screw - Fil hd 10-24 x 1 in. lg						4	A
	102290		Screw - Hex hd 10-24 x 1-1/8 in. lg						4	B
	102760		Screw - Hex hd 10-24 x 1 in. lg						4	CDE
-6	101978		Screw - Fil hd 10-24 x 1-1/8 in. lg						2	A
	102290		Screw - Hex hd 10-24 x 1-1/8 in. lg						2	BCDE
-7	101190		Screw - Rd hd 10-24 x 5/8 in. lg						1	A
	102289		Screw - Hex hd 10-24 x 3/4 in. lg						1	BCDE
-8	28052		Lockplate						4	BCDE
-9	100002		Washer						2	BCDE
-10	19115		Cover - Venturi						1	A
	28115		Cover - Venturi						1	BD
	28773A		Cover - Venturi						1	C
	28756		Cover - Venturi						1	E
-11	19116		Gasket - Venturi cover						1	A
	28116		Gasket - Venturi cover						1	BD
	28774		Gasket - Venturi cover						1	CE
-12	101965		Screw - Fil hd 10-24 x 7/8 in. lg						2	All
-13	19454A		Cover - Breaker						1	All
-14	19088A		Gasket - Breaker cover						1	All
-15	100696		Screw - Fil hd 8-32 x 5/8 in. lg						1	All
-16	100459		Lockwasher - No. 8						1	BCDE

3-25, 4-30 SERIES ENGINES

FIGURE 2. (CONT)

FIG. & INDEX NO.	PART NO.	DESCRIPTION	UNITS PER ASSY	USABLE ON CODE		
					1	2
2-17	100080	Washer - Plain	1	BCDE		
-18	103934	Screw - Rd hd 6-32 x 1/4 in. lg	1	All		
-19	100075	Condenser	1	All		
-20	101991	Screw - Fil hd 10-24 x 1/2 in. lg	1	A		
	24626	Screw	1	BCDE		
-21	100003	Washer - Plain No. 10	3	CD		
	100002	Washer	3	ABE		
-22	100436	Lockwasher	1	A		
-23	100007	Washer	1	BCDE		
-24	101326	Nut - Hex 10-24	3	CD		
	101191	Nut - Hex 10-24	2	A		
	101191	Nut - Hex 10-24	3	BE		
-25	19894A	Breaker Point Assembly	1	All		
-26	100768	Wire - Switch	1	All		
-27	19087	Push Rod - Breaker	1	All		
-28	102128	Screw - Hex hd 1/4-20 x 1-1/4 in. lg	1	CDE		
-29	36306	Lockplate	1	CDE		
	19078A	Cover Assembly - Crankcase	1	A		
	28318	Cover Assembly - Crankcase (Not available - Order Cover and Bearing Assembly #47575)	1	CE		
	28078	Cover Assembly - Crankcase	1	BD		
-30	100283	. Grommet - Rubber	1	AB		
	28322	. Grommet - Rubber	1	CDE		
-31	101304	. Oil Seal	1	All		
-32	100247	. Bearing	1	A		
	102445	. Bearing	1	BCDE		
	28319	. Cover and Wearplate Assembly (Not available - Order Cover and Bearing Assembly #47575)	1	C		
	28062	. Cover and Bearing Assembly - Crankcase	1	BD		
	28759	. Cover - Crankcase (Not available - Order Cover and Bearing Assembly #47575)	1	E		
-33	24317	. . Bushing - Push rod	2	AB		
	28565	. . Bushing - Push rod	2	CDE		
-34	102217	. . Rivet (Code "A": Not supplied with Cover Assembly #19078A - Order separately)	3	ABCD		
-35	19809	. . Wearplate - Crankcase (Code "A": Not supplied with Cover Assembly #19078A - Order separately)..	1	ABD		
	28601	. . Plate - Wear	1	CE		
Replacement Cover and Bearing Assembly #47575						
	47575	Cover and Bearing Assembly	1	CE		
-30	28322	. Grommet - Rubber	1	CE		
-31	101304	. Oil Seal	1	CE		
-32	102445	. Bearing	1	CE		
-33	28565	. Bushing - Push rod	2	CE		
-36	24321	Washer - Felt	1	All		
-37	24321	Washer - Felt	1	ABCD		
-38	24321	Washer - Felt	1	ABD		
-39	24321	Washer - Felt	2	A		
-40	28092	Washer - Felt	1	BD		
-41	28066A	Protector - Crankcase	1	BCDE		
-42	19079	Gasket - Crankcase cover	1	A		
	28079A	Gasket - Crankcase cover (Used with blow-by type filters)	1	BCDE		
	28079B	Gasket - Crankcase cover (Used with Snorkel Air Filter)	1	BCDE		
-43	101214	Washer	1	All		
-44	19010	Rotary Valve	1	A		
	28103	Rotary Valve Assembly	1	BD		
	28313	Valve Assembly - Rotary	1	CE		
-45	11032	Spring - Valve	1	All		
-46		Spark Plug and Gasket - 14 mm	1	All		
-47	28162	Air Deflector	1	B		

3-25, 4-30 SERIES ENGINES

FIGURE 2. (CONT)

FIG. & INDEX NO.	PART NO.	DESCRIPTION							UNITS PER ASSY	USABLE ON CODE
		1	2	3	4	5	6	7		
2-48	103934	Screw - Rd hd 6-32 x 1/4 in. lg							1	All
-49	100252	Lockwasher							1	A
-50	101969	Screw - Fil hd 10-24 x 1-1/2 in. lg							1	ABD
	101965	Screw - Fil hd 10-24 x 7/8 in. lg							1	CE
-51	101970	Screw - Fil hd 10-24 x 2 in. lg							2	ABD
	101965	Screw - Fil hd 10-24 x 7/8 in. lg							2	CE
-52	102189	Washer							3	D
-53	19405	Bridge							1	ABD
	36307	Cover Assembly - Spark plug							1	All
-54	102555	. Cover - Spark plug							1	All
-55	102556	. Connector - Spark plug spring							1	All
-56	19593C	Coil Assembly							1	All
-57	19032	Lamination Assembly							1	All
-58	19034	Retainer - Lamination							2	All
-59	102839	Wire - Spark plug							1	All
-60	101191	Nut - Hex 10-24							1	All
-61	28053	Retainer - Nut							1	BCDE

FIGURE 3. CYLINDER, PISTON AND GEARCASE (MODEL 3-25 ENGINES ONLY).

FIG. & INDEX NO.	PART NO.	DESCRIPTION							UNITS PER ASSY	USABLE ON CODE
		1	2	3	4	5	6	7		

Code: "A" indicates parts used on Model 3-25 engines.

3-1	101885	Screw - Hex hd 1/4-28 x 7/8 in. lg							4	A
-2	100004	Washer - Plain 1/4 in.							4	A
-3	100640	Nut - Lock 1/4-28							4	A
-4	18556A	Retainer - Nut							2	A
-5	19021	Cylinder							1	A
-6	19026	Gasket - Cylinder							1	A
	19020A	Piston Assembly (Not available - Order replacement Piston Assembly #19931A)							1	A
-7	47253	. Ring Set							1	A
-8	24336	. Ring - Retaining							2	A
-9		. Piston (Not available - Order Piston Assembly #19931A)...							1	A

Replacement Piston Assembly #19931A

	19931A	Piston Assembly							1	A
-7	51747	. Ring Set (Top chrome ring)							1	A
-8	24336	. Ring - Retaining							2	A
-9		. Piston (Not available - Order Piston Assembly #19931A)...							1	A

-10	19018	Pin - Piston							1	A
-11	19016A	Connecting Rod Assembly							1	A
-12	19535	. Bushing - Connecting rod							1	A
-13	101205	. Screw - Socket hd 10-32 x 3/4 in. lg							2	A
-14	19822	. Cage Assembly - Bearing (3 pieces)							1	A
-15	101035	. Needle - Roller							15	A
-16		. Rod - Connecting (Not available - Order Connecting Rod Assembly #19016A)							1	A
-17	102101	Screw - Hex hd 10-24 x 7/8 in. lg							3	A
-18	28051	Lockplate							1	A
-19	101992	Screw - Rd hd 10-24 x 7/8 in. lg							5	A
-20	101999	Screw - Rd hd 1/4-20 x 2-3/4 in. lg							1	A
-21	100289	Washer							1	A
-22	101989	Screw - Rd hd 10-24 x 1/2 in. lg							2	A
-23	101995	Screw							1	A
-24	100002	Washer							3	A
-25	101191	Nut - Hex 10-24							6	A
-26	19064A	Cover Assembly - Gear case							1	A

3-25, 4-30 SERIES ENGINES

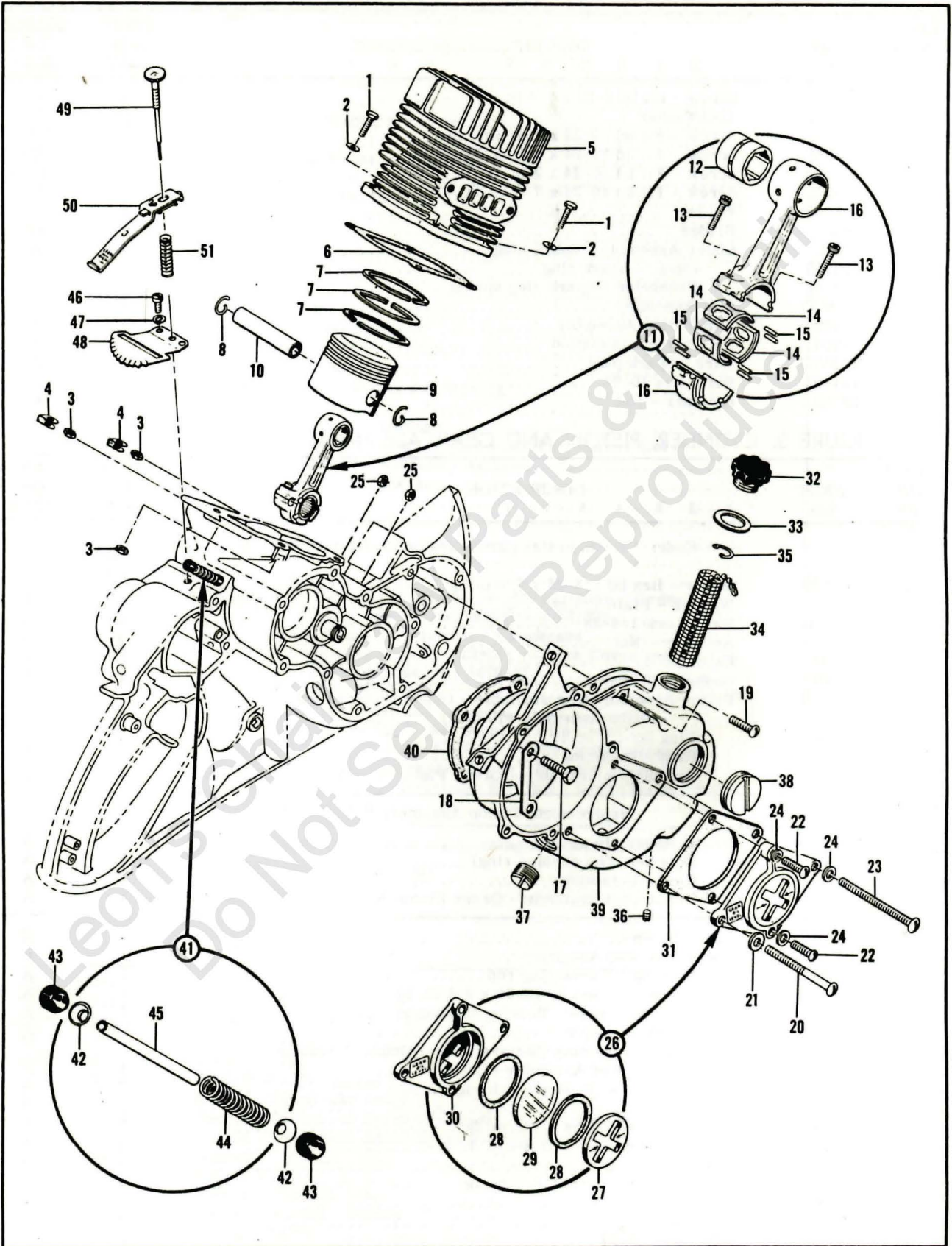


Figure 3. Cylinder, Piston and Gearcase (Model 3-25 Engines Only)

3-25, 4-30 SERIES ENGINES

FIGURE 3. (CONT)

FIG. & INDEX NO.	PART NO.	DESCRIPTION							UNITS PER ASSY	USABLE ON CODE
		1	2	3	4	5	6	7		
3-27	19856	.							1	A
-28	19878	.							2	A
-29	19857	.							1	A
-30		.							1	A
-31	19063	.							1	A
-32	19734	.							1	A
-33	23055	.							1	A
-34	19067	.							1	A
-35	19690	.							1	A
-36	100161	.							1	A
-37	101190	.							1	A
-38	101780	.							1	A
-39	19315	.							1	A
-40	19120	.							1	A
-41	19523	.							1	A
-42	19286	.							2	A
-43	19285	.							2	A
-44	19287	.							1	A
-45	19258	.							1	A
-46	101988	.							2	A
-47	101194	.							2	A
-48	19250	.							1	A
-49	19361	.							1	A
-50	19368	.							1	A
-51	19367	.							1	A

FIGURE 4. CYLINDER, PISTON AND GEARCASE.

FIG. & INDEX NO.	PART NO.	DESCRIPTION							UNITS PER ASSY	USABLE ON CODE
		1	2	3	4	5	6	7		
Code: "B" indicates parts used on Model 4-30 engines.										
"C" indicates parts used on Model 4-30A engines.										
"D" indicates parts used on Model 47 engines.										
"E" indicates parts used on Model 73 engines.										
4-1	101885	.							3	BD
	103154	.							3	C
	103486	.							3	E
-2	101885	.							1	BD
	103154	.							1	C
-3	100004	.							3	B
	100311	.							3	E
-4	100311	.							1	E
-5	28341A	.							2	CD
-6	24545	.							1	B
	100246	.							1	E
-7	100640	.							3	BCDE
-8	18556A	.							2	BCDE
-9	100248	.							1	E
-10	19021	.							1	D
	28260	.							1	C
	28779	.							1	E
	28021	.							1	B
-11	101597	.							6	B
-12	24236	.							6	B
-13	101191	.							7	B
-14	28024	.							1	B
-15	28025	.							1	B
-16		.							1	B

3-25, 4-30 SERIES ENGINES

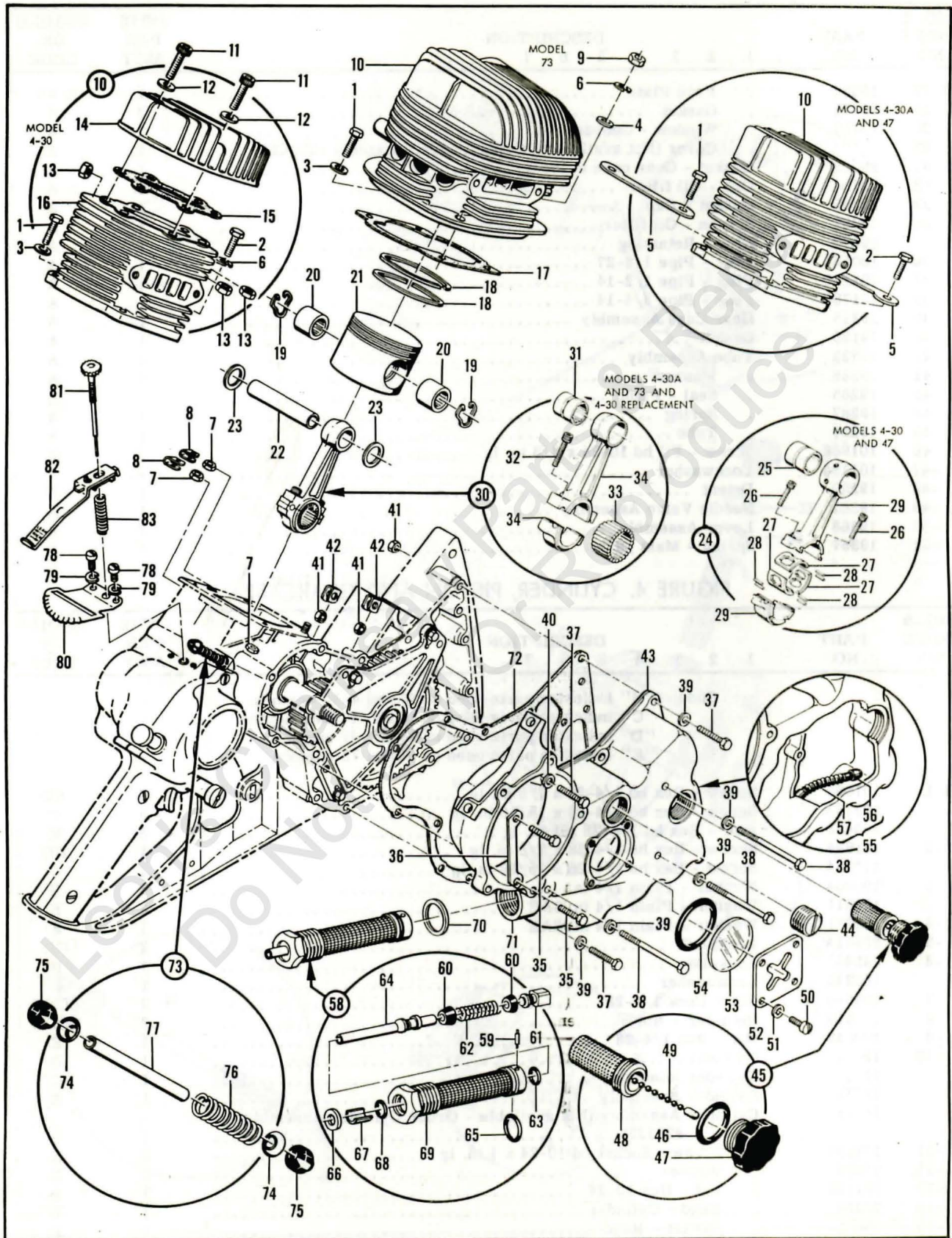


Figure 4. Cylinder, Piston and Gearcase

3-25, 4-30 SERIES ENGINES

FIGURE 4. (CONT)

FIG. & INDEX NO.	PART NO.	1	2	3	4	5	6	7	DESCRIPTION	UNITS PER ASSY	USABLE ON CODE
Replacement Cylinder Assembly #28339											
4-10	28339	Cylinder Assembly (This is a one-piece head)							1	B	
-17	19026	Gasket - Cylinder							1	BCD	
	28521A	Gasket - Cylinder							1	E	
	28020A	Piston Assembly (Not available - Order Piston Assembly #28353A used on Code "C". Requires Connecting Rod Assembly #28016B)							1	B	
	28353A	Piston Assembly							1	C	
	19931A	Piston Assembly							1	D	
	28885	Piston Assembly (Not available - Order Piston Assembly #47580)							1	E	
-18	28886	. Ring Set (Top chrome ring)							1	BC	
	51747	. Ring Set (Top chrome ring)							1	D	
	28809	. Ring Set (Top chrome ring)							1	E	
-19	24336	. Ring - Retaining							2	BCD	
	28597	. Ring - Retaining							2	E	
-20	103475	. Bearing - Needle							2	E	
-21		. Piston (Not available - Order correct Piston Assembly)							1	BCDE	
Replacement Piston Assembly #47580											
	47580	Piston Assembly							1	E	
-18	28809	. Ring Set							1	E	
-20	103475	. Bearing - Needle							1	E	
-21		. Piston (Not available - Order Piston Assembly #47580)							1	E	
-22	28018	Pin - Piston							1	BC	
	19018	Pin - Piston							1	D	
	28744	Pin - Piston							1	E	
-23	28057	Washer - Thrust							2	C	
	28743	Washer - Piston pin							2	E	
-24	28016	Connecting Rod Assembly (Not available - Order Connecting Rod Assembly #28016B)							1	B	
	19016A	Connecting Rod Assembly							1	D	
-25	100300	. Bearing - Needle							2	B	
	19535	. Bushing - Connecting rod							1	D	
-26	101205	. Screw - Socket hd 10-32 x 3/4 in. lg							2	BD	
-27	19822	. Cage Assembly - Bearing (3 pieces)							1	BD	
-28	101035	. Needle - Roller							15	BD	
-29		. Rod - Connecting (Not available - Order correct Connecting Rod Assembly)							1	BD	
-30	28016A	Connecting Rod Assembly							1	C	
	28795A	Connecting Rod Assembly							1	E	
-31	100300	. Bearing - Needle							2	C	
-32	101205	. Screw - Socket hd 10-32 x 3/4 in. lg							2	CE	
-33	100226	. Roller - Needle							24	CE	
-34		. Rod - Connecting (Not available - Order correct Connecting Rod Assembly)							1	CE	
Replacement Connecting Rod Assembly #28016B											
-30	28016B	Connecting Rod Assembly (Must be used with Piston Assembly #28353A)							1	B	
-31	100300	. Bearing - Needle							2	B	
-32	101205	. Screw - Socket hd 10-32 x 3/4 in. lg							2	B	
-33	100226	. Roller - Needle							24	B	
-34		. Rod - Connecting (Not available - Order Connecting Rod Assembly #28016B)							1	B	
-35	102101	Screw - Hex hd 10-24 x 7/8 in. lg							3	BCDE	
-36	28051	Lockplate							1	BCDE	

3-25, 4-30 SERIES ENGINES

FIGURE 4. (CONT)

FIG. & INDEX NO.	PART NO.	DESCRIPTION							UNITS PER ASSY	USABLE ON CODE
		1	2	3	4	5	6	7		
4-37	102291	Screw - Hex hd 10-24 x 1 in. lg							10	BCDE
-38	102320	Screw - Hex hd 10-24 x 2-1/2 in. lg							3	BCDE
-39	100002	Washer							14	BC
	100002	Washer							13	D
	100003	Washer - Plain No. 10							13	E
-40	100289	Washer							1	BCDE
-41	101326	Nut - Hex 10-24							15	BCDE
-42	28053	Retainer - Nut							2	BCDE
-43	28046A	Gear Case Assembly							1	BCD
	28710	Gear Case Assembly							1	E
-44	101190	Plug - Pipe							1	BCDE
-45	28026	Screen and Cap Assembly							1	BCDE
-46	101148	Gasket - "O" ring							1	BCDE
-47	52388	Cap - Oil filler							1	BCDE
-48	28027	Screen Assembly							1	BCDE
-49	28056	Chain Assembly							1	BCDE
-50	101991	Screw - Fil hd 10-24 x 1/2 in. lg							4	BCDE
-51	101194	Lockwasher - No. 10							4	BCDE
-52	28074	Face Plate Assembly							1	BCDE
-53	19857	Window - Gear case							1	BCDE
-54	102098	"O" Ring							1	BCDE
-55	28022A	Hose Assembly - Oil							1	BCDE
-56	19132	Weight							1	BCDE
-57	28007	Hose - Oil							1	BCDE
-58	24055A	Oil Pump Assembly							1	BCDE
-59	24106	Pin - Pump							1	BCDE
-60	24104	Cup - Packing							2	BCDE
-61	24105A	Plug - Pump							1	BCDE
-62	28215	Spring							1	BCDE
-63	101258	Packing - "O" ring							1	BCDE
-64	24103A	Plunger - Pump							1	BCDE
-65	101218	"O" Ring							1	BCDE
-66	100950	Washer - Pump							1	BCDE
-67	24108	Seal - Pump							1	BCDE
-68	101056	"O" Ring							1	BCDE
-69	24193	Body Assembly - Pump							1	BCDE
-70	24120	Gasket - Oil pump							1	BCDE
-71	28017C	Gear case							1	BCD
	28702A	Gear case							1	E
-72	28120	Gasket - Gear case							1	BCDE
-73	19523	Tube Assembly							1	BCDE
-74	19286	Washer							2	BCDE
-75	19285	Seal - Pump							2	BCDE
-76	19287	Spring							1	BCDE
-77	19258	Tube							1	BCDE
-78	101988	Screw - Fil hd 10-24 x 3/8 in. lg							2	BCDE
-79	101194	Lockwasher - No. 10							2	BCDE
-80	19250	Detent							1	BCDE
-81	19361	Needle Valve Assembly							1	BCDE
-82	19368	Lever Assembly							1	BCDE
-83	19367	Spring - Main jet							1	BCDE

3-25, 4-30 SERIES ENGINES

FIGURE 5. CRANKCASE AND BAR ADJUSTING LOCKPLATE, MODEL 3-25 ONLY.

FIG. & INDEX NO.	PART NO.	1	2	3	4	5	6	7	DESCRIPTION	UNITS PER ASSY	USABLE ON CODE
Code: "A" indicates parts used on Model 3-25 engines.											
5-1	101977								Screw - Fil hd 1/4-20 x 3/4 in. lg	2	A
-2	101143								Nut - Hex 1/4-20	2	A
-3	19752								Spike	1	A
-4	100682								Nut - Hex 5/16-24	3	A
-5	100007								Washer	2	A
-6	19682								Lockplate Assembly - Adjusting	1	A
-7	100010								Pin - Cotter 0.06 x 1/2 in. lg	1	A
-8	102022								Nut - 5/16-24	1	A
-9	24260								Washer - Spring	1	A
-10	102193								Screw - Lock plain adjusting	1	A
-11	100007								Washer	1	A
-12	19708								Nut - Adjusting	1	A
-13	19681								Body - Lockplate	1	A
-14	101179								Nut - Hex 7/16-20	1	A
-15	19733A								Shroud - Sprocket	1	A
-16									Sprocket	1	A
-17	100256								Key	1	A
-18	19278								Shroud - Sprocket	1	A
-19	19162								Shield - Dirt	1	A
-20	101278								Bearing - Ball	1	A
-21	19013								Shaft Gear	1	A
-22	101277								Bearing - Ball	1	A
-23	19094								Spacer - Bearing	1	A
-24	100501								Snap Ring	1	A
-25	19140A								Thrust Washer	1	A
	19379								Gear Assembly - Idler (Not available - Order Gear Assembly #19889)	1	A
-26	19754								Bushing - Idler gear	1	A
-27									Gear - Idler (Not available - Order Gear Assembly #19889) ..	1	A
<p style="text-align: center;">Replacement Idler Gear Assembly #19889</p> <p style="text-align: center;">Note: Idler gear shaft #19888 (Figure 5, No. 78) must be used with this gear assembly.</p>											
-28	101269								Retaining Ring	1	A
	19889								Gear Assembly - Idler	1	A
-29	102271								Snap Ring	1	A
-30	102339								Bearing	1	A
-31									Gear - Idler (Not available - Order Idler Gear Assembly #19889)	1	A
-32	100564								Oil Seal	1	A
-33	28327								Sleeve - Venturi small	1	A
-34	19845								Spring	1	A
-35	19844								Sleeve - Venturi	1	A
-36	19846								Spring	1	A
-37	19877								Throttle Gate	1	A
-38	101072								Screw - Oval hd 10-24 x 3/4 in. lg	1	A
-39	101060								Screw - Oval hd 10-24 x 1 in. lg	2	A
-40	101191								Nut - Hex 10-24	2	A
-41	19431A								Screw - Idle	1	A
-42	11361A								Spring	1	A
-43	100002								Washer	1	A
-44	19412								Gasket	1	A
-45	101426								Snap Ring	1	A
-46	100183								Washer	1	A
-47	19119								Oiler Rod	1	A
-48	19157								Plunger	1	A
-49	19414								Cover Assembly - Filter	1	A
-50	100954								Groove Pin	1	A

3-25, 4-30 SERIES ENGINES

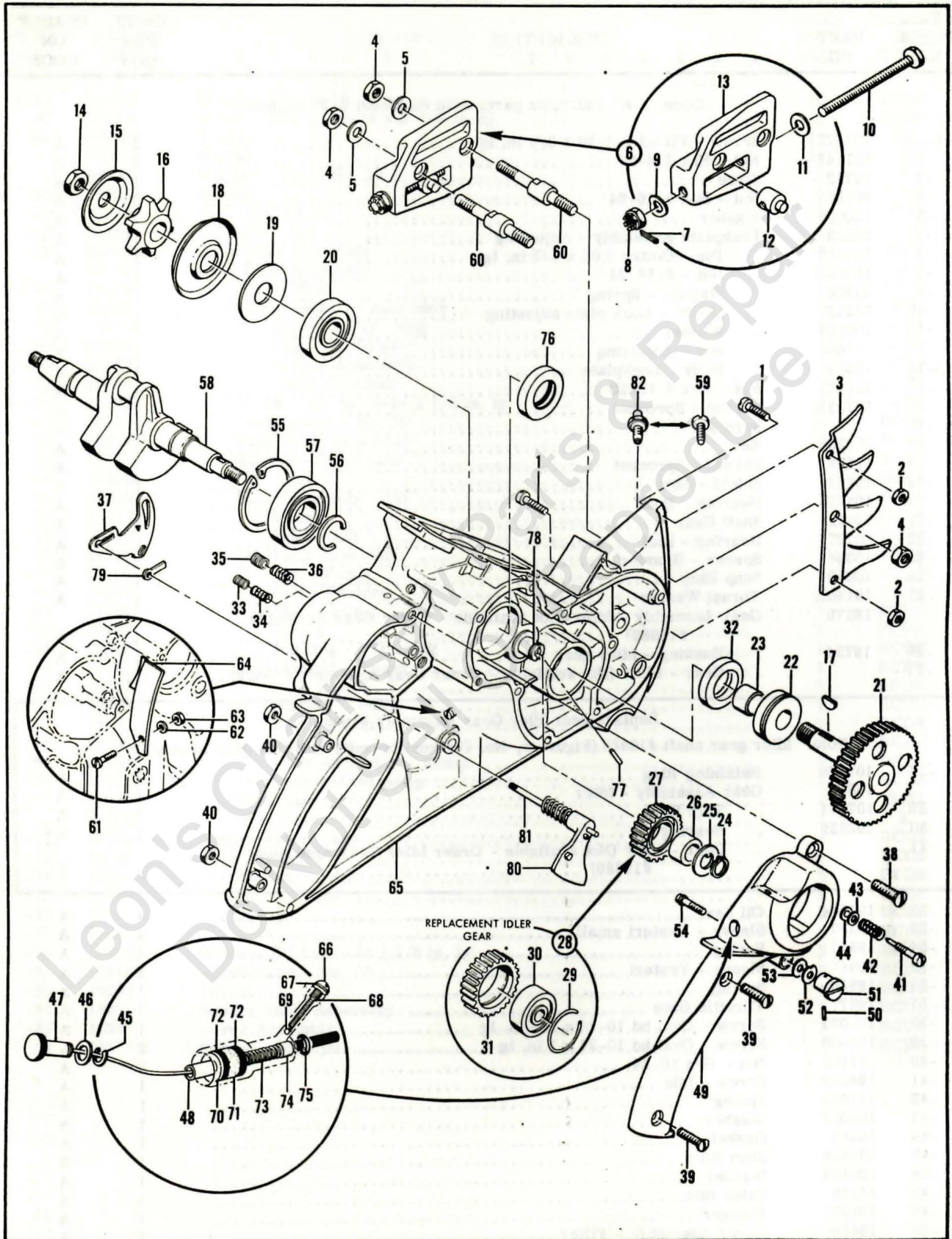


Figure 5. Crankcase and Bar Adjusting Lockplate, (Model 3-25 Engine Only)

3-25, 4-30 SERIES ENGINES

FIGURE 5. (CONT)

FIG. & INDEX NO.	PART NO.	DESCRIPTION							UNITS PER ASSY	USABLE ON CODE
		1	2	3	4	5	6	7		
5-51	19288	.							1	A
-52	19289	.							1	A
-53	100002	.							1	A
-54	19279	.							1	A
-55	100684	.							1	A
-56	101173	.							1	A
-57	100683	.							1	A
-58	19025B	.							1	A
-59	100590	.							1	A
-60	19416A	.							2	A
-61	100297	.							1	A
-62	100002	.							1	A
-63	101191	.							1	A
-64	19727B	.							1	A
-65	19520C	.							1	A
-66	101204	.							1	A
-67	100153	.							1	A
-68	19804	.							1	A
-69	100549	.							1	A
-70	19158	.							1	A
-71	19159	.							1	A
-72	101246	.							2	A
-73	19236	.							1	A
-74	19117	.							1	A
-75	100939	.							1	A
-76	100564	.							1	A
-77	101222	.							1	A
-78	19888	.							1	A
-79	19118	.							1	A
-80	19014	.							1	A
-81	19185	.							1	A
-82	28054	.							1	A

FIGURE 6. CRANKCASE AND BAR ADJUSTING LOCKPLATE.

FIG. & INDEX NO.	PART NO.	DESCRIPTION							UNITS PER ASSY	USABLE ON CODE
		1	2	3	4	5	6	7		
6-1	101977	.							2	BCDE
-2	101143	.							2	BCDE
-3	19752	.							1	BCDE
-4	100682	.							3	BCDE
-5	100440	.							2	BCDE
-6	19682	.							1	BCDE
-7	100010	.							1	BCDE
-8	102022	.							1	BCDE
-9	24260	.							1	BCDE
-10	102193	.							1	BCDE
-11	100007	.							1	BCDE
-12	19708	.							1	BCDE
-13	19681	.							1	BCDE
-14	102101	.							3	BCDE

Code: "B" indicates parts used on Model 4-30 engines.
 "C" indicates parts used on Model 4-30A engines.
 "D" indicates parts used on Model 47 engines.
 "E" indicates parts used on Model 73 engines.

3-25, 4-30 SERIES ENGINES

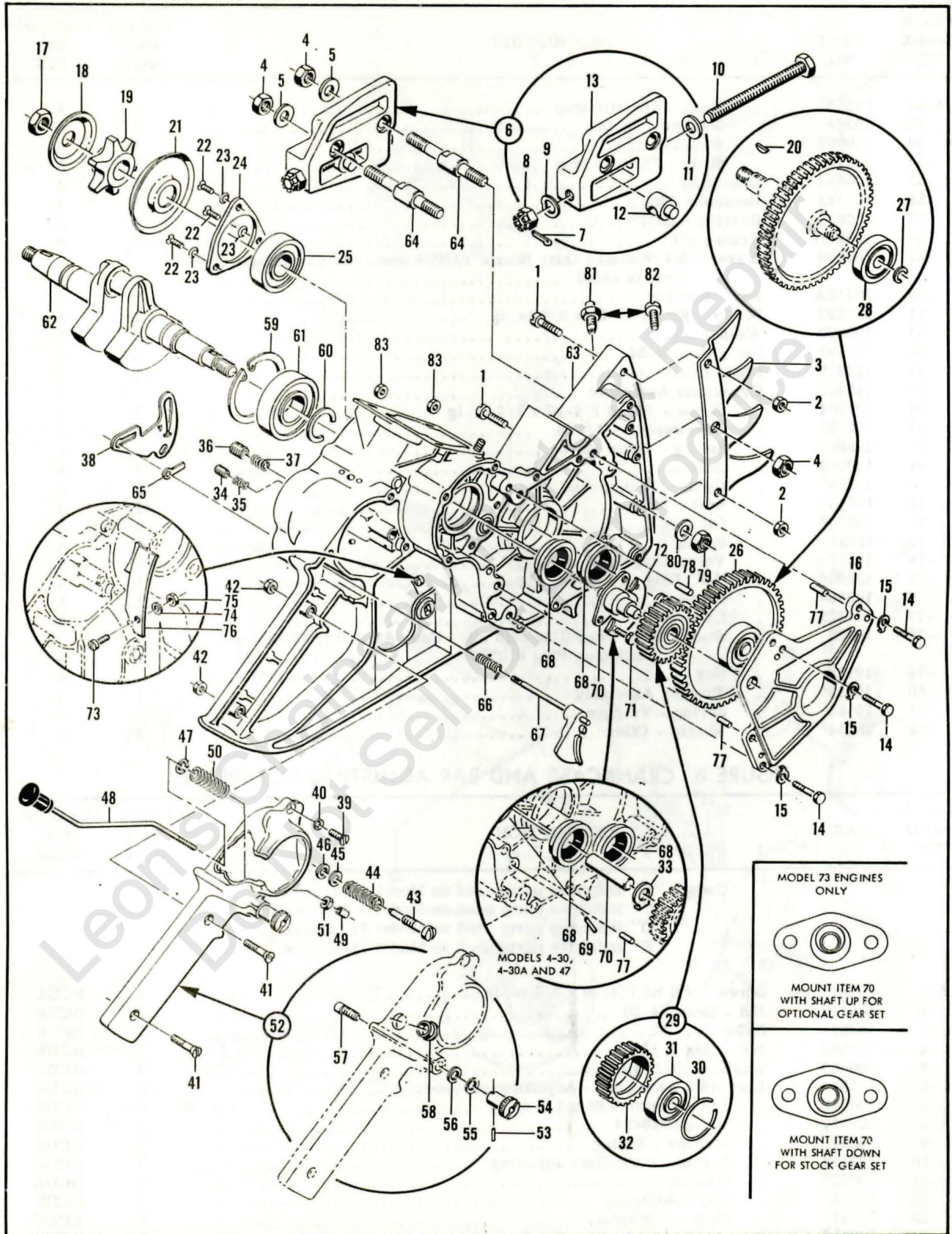


Figure 6. Crankcase and Bar Adjusting Lockplate

3-25, 4-30 SERIES ENGINES

FIGURE 6. (CONT)

FIG. & INDEX NO.	PART NO.	DESCRIPTION							UNITS PER ASSY	USABLE ON CODE
		1	2	3	4	5	6	7		
6-15	28052	Lockplate							3	BCDE
-16	28003	Plate - Shaft support							1	B
	28003A	Plate - Shaft support							1	CD
	28720	Plate - Shaft support							1	E
-17	101179	Nut - Hex 7/16-20							1	BCDE
-18	19733A	Shroud - Sprocket							1	BCDE
-19		Sprocket (Order for size of chain to be used)							1	BCDE
-20	100256	Key							1	BCDE
-21	19278	Shroud - Sprocket							1	BCDE
-22	100852	Screw - Flat hd 10-24 x 1/2 in. lg							3	BCDE
-23	102395	Lockwasher - Countersunk							3	BCDE
-24	28040	Plate - Sprocket bearing retainer							1	BCDE
-25	102084	Bearing							1	BCDE
-26	28008	Gear Assembly - Sprocket shaft							1	BCD
	28575	Shaft Assembly - Sprocket							1	E
-27	101794	. Ring - Retaining							1	BCDE
-28	101376	. Bearing - Ball							1	BCDE
-29	28006A	Gear Assembly - Idler							1	BCD
	28781	Gear Assembly - Idler							1	E
-30	102701	. Ring - Retainer							1	BCD
	28033	. Ring - Retainer							1	E
-31	102702	. Bearing							1	BCD
	102083	. Bearing							1	E
-32	28012A	. Gear - Idler							1	BCD
	28780	. Gear - Idler							1	E
-33	28034	Thrust Washer							1	BCD
-34	28327	Sleeve - Venturi small							1	BCDE
-35	19845	Spring							1	BCDE
-36	19844	Sleeve - Venturi							1	B
	28326	Sleeve - Venturi large							1	CDE
-37	19846	Spring							1	BCDE
-38	28087A	Throttle Gate							1	B
	47205A	Throttle Gate							1	CDE
-39	101072	Screw - Oval hd 10-24 x 3/4 in. lg							1	BCDE
-40	102395	Lockwasher - Countersunk							1	BCDE
-41	101060	Screw - Oval hd 10-24 x 1 in. lg							2	BCDE
-42	101191	Nut - Hex 10-24							2	BCDE
-43	*19413A	Screw - Idle							1	B
	*28329	Screw - Idle							1	CDE
-44	*11361A	Spring							1	B
	*28331	Spring - Idle screw							1	CDE
-45	19412	Gasket - Idle screw							1	B
	28330	Gasket - Idle screw							1	CDE
-46	100002	Washer							1	B
	100004	Washer - Plain 1/4 in.							1	CD
	100005	Washer - Plain							1	E
-47	101426	Snap Ring							1	BCDE
-48	28013	Oil Pump Push Rod Assembly							1	BCDE
-49	24584	Sleeve - Push rod							1	BCDE
-50	24313	Spring - Push rod							1	BCDE
-51	100722	Nut - Stop 6-32							1	BCDE
-52	28014A	Cover Assembly - Air filter							1	BCDE
-53	100954	. Pin - Groove							1	BCDE
-54	19288	. Knob - Throttle stop							1	BCDE
-55	19289	. Washer - Spring							1	BCDE
-56	100003	. Washer - Plain No. 10							1	BCDE
-57	19279	. Shaft - Throttle stop							1	BCDE
-58	28057	. Sleeve - Push rod							1	BCDE
-59	100684	Snap Ring							1	BCDE
-60	101173	Retaining Ring							1	BCDE

*When Carburetor Assembly #47393 is used on these models, the idle screw and spring must be replaced by a 1/4-28 x 1 inch long Fillister head screw.

3-25, 4-30 SERIES ENGINES

FIGURE 6. (CONT)

FIG. & INDEX NO.	PART NO.	DESCRIPTION							UNITS PER ASSY	USABLE ON CODE
		1	2	3	4	5	6	7		
6-61	100683								1	BCDE
-62	19025B								1	BCD
	28820								1	E
-63	28023								1	B
	*28334A								1	CD
	**28708B								1	E
-64	19416A	.							2	BCDE
-65	28118	.							1	BCDE
-66	19185	.							1	BCDE
-67	28067	.							1	BCDE
-68	102939	.							2	BCDE
-69	102838	.							1	BCD
-70	28041A	.							1	BCD
	28717	.							1	E
-71	28667	.							2	E
-72	28662	.							2	E
-73	100297	.							1	BCDE
-74	100002	.							1	BCD
	100003	.							1	E
-75	101191	.							1	BCDE
-76	19727B	.							1	BCDE
-77	102110	.							2	BCDE
-78	102110	.							1	E
-79	100682	.							1	CDE
-80	100440	.							1	CDE
-81	28054	.							1	BCDE

Replacement Crankcase Assemblies #28925C, #28927 and #47403

-63	28925C								1	BCD
	28927								1	E
	47403								1	E
-43	***28329	.							1	BCD
	103295	.							1	E
-44	***28331	.							1	BCD
-45	28330	.							1	BCD
-46	100005	.							1	BCD
-64	19416A	.							2	BCDE
-65	28118	.							1	BCDE
-66	19185	.							2	BCDE
-67	28067	.							1	BCDE
-68	102939	.							2	BCDE
-70	28717	.							1	BCDE
-71	28667	.							2	BCDE
-72	28662	.							2	BCD
	28662	.							1	E
-73	103469	.							1	BCDE
-74	100003	.							1	BCDE
-75	101191	.							1	BCDE
-76	19727B	.							1	BCDE
-77	102110	.							2	BCDE

*Also used on Model 4-30 engines as service replacement for a time.

**Model 73 engines also used Crankcase Assembly #28927 as a service replacement.

***When Carburetor Assembly #47393 is used on these models, the idle screw and spring must be replaced by a 1/4-28 x 1 inch long Fillister head screw.

3-25, 4-30 SERIES ENGINES

FIGURE 6. (CONT)

FIG. & INDEX NO.	PART NO.	DESCRIPTION							UNITS PER ASSY	USABLE ON CODE
		1	2	3	4	5	6	7		
6-78	102110	.							1	BCDE
-79	100682	.							2	BCDE
-80	100440	.							2	BCDE
-81	28054	.							1	BCDE
	100010	.							1	BCDE
-82	100590								1	BCDE
-83	101191								2	BCDE

FIGURE 7. FUEL TANK.

FIG. & INDEX NO.	PART NO.	DESCRIPTION							UNITS PER ASSY	USABLE ON CODE
		1	2	3	4	5	6	7		
Code: "A" indicates parts used on Model 3-25 engines.										
"B" indicates parts used on Model 4-30 engines.										
"C" indicates parts used on Model 4-30A engines.										
"D" indicates parts used on Model 47 engines.										
"E" indicates parts used on Model 73 engines.										
"All" indicates parts used on all five model engines.										
7-	19084								1	A ¹
	28025								1	B ¹
	19955B								1	A ² D
	28328A								1	B ² C
	28571A								1	E
-1	19082C	.							1	A ¹ A ² D
	28064A	.							1	B ¹ B ² C
	28572A	.							1	E
-2	19083A	.							1	A ¹ A ² D
	28253A	.							1	B ¹ B ² C
	28704A	.							1	E
-3	101385	.							2	A ² B ¹ B ² CD
-4	100243	.							11	A ² B ¹ B ² CD
	100243	.							8	E
-5	101991	.							3	A ² D
	100243	.							3	B ¹ B ² C
-6	100240	.							14	A ² B ¹ B ² CD
	100240	.							8	E
-7	19685A	.							1	A ¹ A ² B ¹ B ² CD
	28530	.							1	E
-8	102270	.							1	A ¹ B ¹
	103081	.							1	E
-9	19661	.							1	A ¹
	28091	.							1	A ² B ¹ B ² CDE

Swivel Type Fuel Pickup Assemblies

-10	19787	.							1	A ¹ B ¹
	19139	.							1	A ¹ B ¹
-11	19133	.							1	A ¹ B ¹
-12	19132	.							1	A ¹ B ¹
-13	28803	.							1	All
-14	28806	.							2	All
-15	28804	.							1	All

3-25, 4-30 SERIES ENGINES

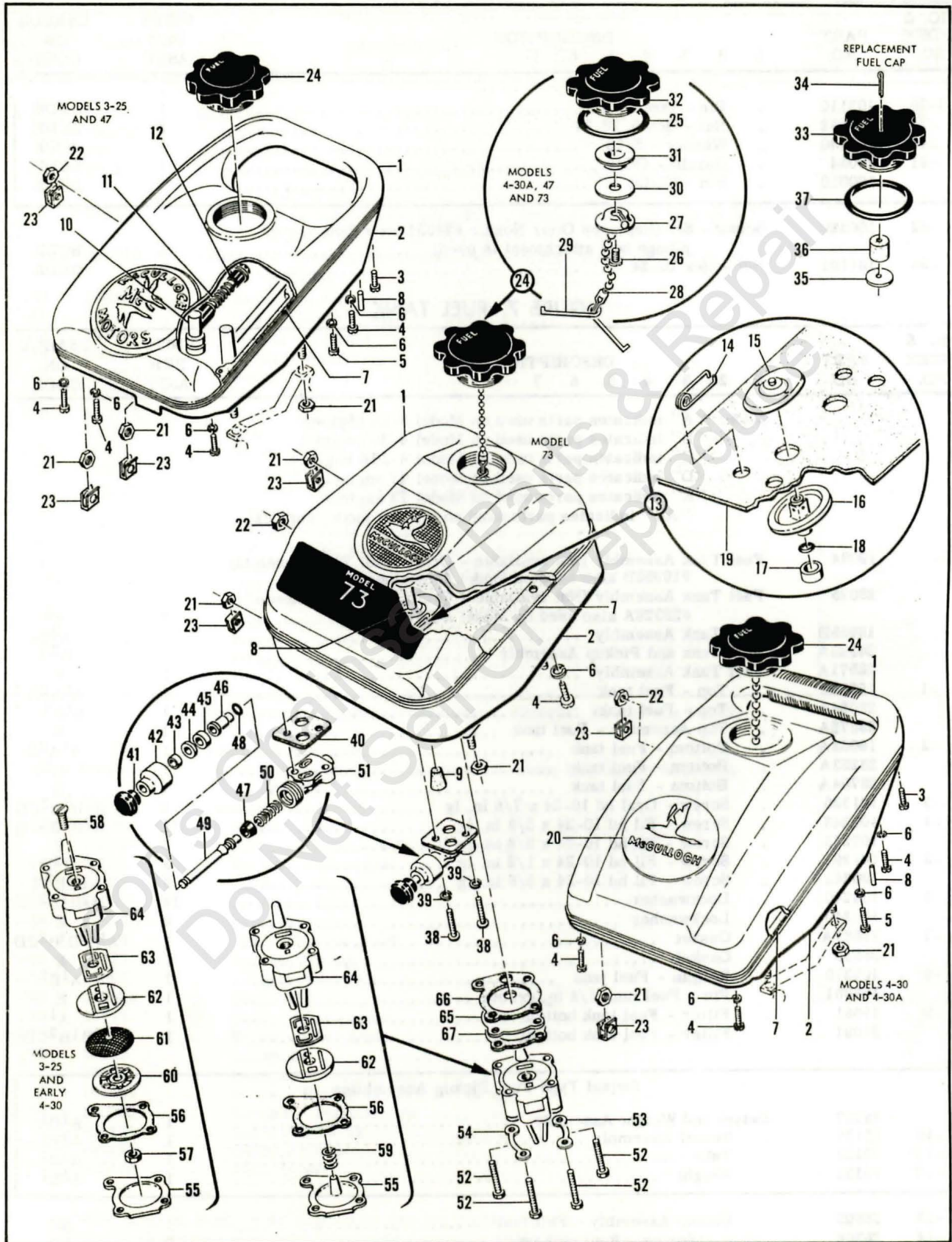


Figure 7. Fuel Tank

3-25, 4-30 SERIES ENGINES

FIGURE 7. (CONT)

FIG. & INDEX NO.	PART NO.	1	2	3	4	5	6	7	UNITS PER ASSY	USABLE ON CODE
7-16	28805	.	.	.	Body - Fuel pick up				1	All
-17	28269	.	.	.	Retainer				1	All
-18	101056	.	.	.	"O" Ring				1	All
-19	28268A	.	.	.	Wick - Fuel pick up				1	All
-20	28084	.	.	.	Medallion				1	BCE
-21	101143	.	.	.	Nut - Hex 1/4-20				4	All
-22	101326	.	.	.	Nut - Hex 10-24				1	All
-23	28053	.	.	.	Retainer - Nut				2	All
-24	19701	.	.	.	Fuel Cap and Gasket Assembly (Not available - Order Fuel Cap Assembly #52136A)				1	AB
	19701A	.	.	.	Fuel Cap and Gasket Assembly (Not available - Order Fuel Cap Assembly #52136A)				1	CDE
-25	101348	.	.	.	"O" Ring				1	All
-26	102816	.	.	.	Screw - Rd hd 10-24 x 3/8 in. lg				1	CDE
-27	19915	.	.	.	Washer - Fuel cap				1	CDE
-28	101161	.	.	.	Chain - Cap				1	CDE
-29	18191A	.	.	.	Retainer - Fuel cap				1	CDE
-30	19916	.	.	.	Disc - Fuel cap				1	CDE
-31	19928	.	.	.	Washer - Fuel cap				1	CDE
-32	19918	.	.	.	Cap - Fuel (Not available - Order Fuel Cap Assembly #52137A)				1	CDE
Replacement Fuel Cap Assembly #52136A										
	52136A	.	.	.	Fuel Cap Assembly				1	All
-33	52137A	.	.	.	Cap - Fuel				1	All
-34	100731	.	.	.	Pin - Cotter				1	All
-35	102206	.	.	.	Washer - Plain				1	All
-36	50379	.	.	.	Filter				1	All
-37	101348	.	.	.	"O" Ring				1	All
-38	101992	.	.	.	Screw - Rd hd 10-24 x 7/8 in. lg				2	All
-39	100240	.	.	.	Lockwasher				2	All
	19397B	.	.	.	Primer and Gasket Assembly				1	All
-40	19396A	.	.	.	Gasket - Primer				1	All
-41	19970A	.	.	.	Button - Primer				1	All
-42	19969	.	.	.	Packing Nut - Primer				1	All
-43	19968	.	.	.	Seal - Felt				1	All
-44	102523	.	.	.	Washer				1	All
-45	19967	.	.	.	Packing - Primer				1	All
-46	19966	.	.	.	Sleeve - Primer				1	All
-47	24104	.	.	.	Cup - Packing				1	All
-48	101258	.	.	.	"O" Ring				1	All
-49	19965	.	.	.	Plunger - Primer				1	All
-50	11086	.	.	.	Spring				1	All
-51	19962A	.	.	.	Body Assembly - Primer				1	All
-52	102291	.	.	.	Screw - Hex hd 10-24 x 1 in. lg				4	All
-53	28210	.	.	.	Lockplate				1	All
-54	28211	.	.	.	Lockplate				1	All
	19262A	.	.	.	Pump Assembly - Fuel				1	A
	19960	.	.	.	Pump Assembly - Fuel (Not available - Order Fuel Pump Assembly #19960B)				1	B ¹
	19960B	.	.	.	Pump Assembly - Fuel				1	B ² CDE
-55		.	.	.	Cover - Fuel pump (Order #28650 Cover, #28574 Spring and #28652A Body)				1	B ¹
	28650	.	.	.	Cover - Fuel pump				1	All
-56	19255	.	.	.	Gasket - Cover				1	All
-57	100703	.	.	.	Nut - Hex 10-32				1	AB ¹
-58	100625	.	.	.	Screw - Flat hd 10-32 x 1/2 in. lg				1	AB ¹
-59	28574	.	.	.	Spring - Pump				1	B ² CDE
-60	19815	.	.	.	Keeper				1	AB ¹

3-25, 4-30 SERIES ENGINES

FIGURE 7. (CONT)

FIG. & INDEX NO.	PART NO.	DESCRIPTION							UNITS PER ASSY	USABLE ON CODE
		1	2	3	4	5	6	7		
7-61	19256	.							1	AB ¹
-62	19645A	.							1	All
-63	19257	.							1	All
-64	19261B	.							1	A
		.							1	B ¹
	28652A	.							1	B ² CDE
-65	19534A	.							1	All
-66	19513	.							1	All
-67	19513	.							1	E

FIGURE 8. STARTER AND CLUTCH ASSEMBLY.

FIG. & INDEX NO.	PART NO.	DESCRIPTION							UNITS PER ASSY	USABLE ON CODE
		1	2	3	4	5	6	7		
Code: "A" indicates parts used on Model 3-25 engines.										
"B" indicates parts used on Model 4-30 engines.										
"C" indicates parts used on Model 4-30A engines.										
"D" indicates parts used on Model 47 engines.										
"E" indicates parts used on Model 73 engines.										
"All" indicates parts used on all five model engines.										
8-1	101975	.							3	AB
	102320	.							3	CDE
-2	101602	.							1	A
	101970	.							1	B
	103124	.							1	CD
	103356	.							1	E
-3	101194	.							1	All
-4	100002	.							3	ABCD
	100003	.							3	E
-5	101974	.							1	All
-6	100002	.							1	AB
-7	101326	.							4	All
-8	19550	.							1	ABCD
	19550A	.							1	E
-9	101989	.							1	All
-10	101191	.							1	All
-11	19551A	.							1	All
-12	101795	.							1	All
-13	24488	.							1	All
	19422	.							1	ABCD
-14	18840A	.							1	ABCD
-15	36395	.							1	ABCD
-16	101871	.							1	ABCD
-17	18849B	.							1	ABCD
-18	19110	.							1	ABCD
-19	19401	.							1	ABCD
-20	24818	.							1	E
-21	24822	.							1	E
-22	28716	.							1	E
-23	28842	.							1	All
-24	19549	.							1	All
-25	19568	.							1	All
-26	19545	.							1	All
-27	28741	.							1	E
-28	19547	.							1	All
-29	19548	.							1	All

3-25, 4-30 SERIES ENGINES

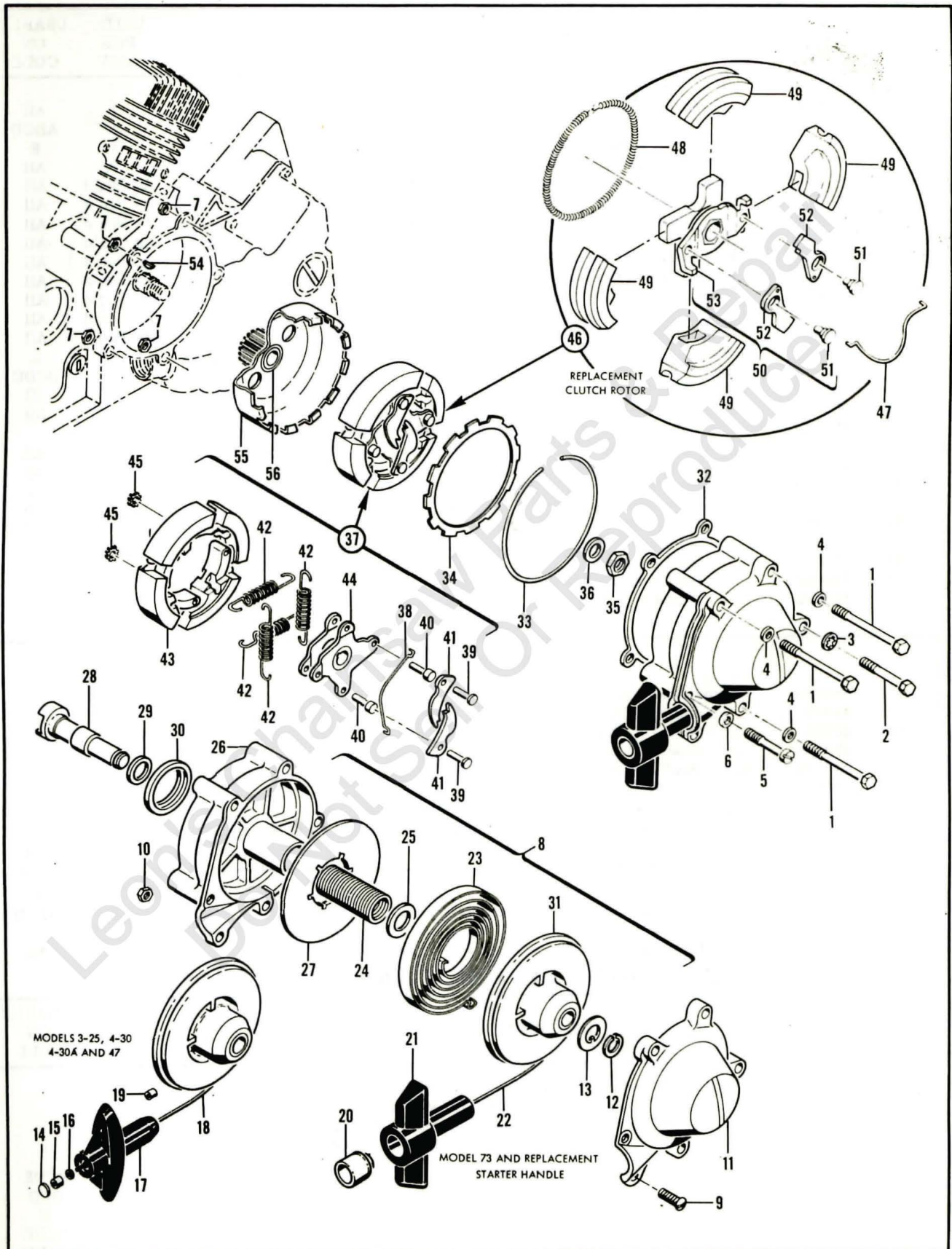


Figure 8. Starter and Clutch Assembly

3-25, 4-30 SERIES ENGINES

FIGURE 8. (CONT)

FIG. & INDEX NO.	PART NO.	DESCRIPTION							UNITS PER ASSY	USABLE ON CODE
		1	2	3	4	5	6	7		
8-30	101611	.	Seal - Oil						1	All
-31	19538	.	Drum - Starter						1	ABCD
	28715	.	Drum - Starter						1	E
-32	19180		Gasket - Starter						1	All
-33	19114		Ring - Clutch disc retaining 0.080 in. thick						As Req'd	All
	19114A		Ring - Clutch disc retaining 0.041 in. thick						As Req'd	All
	19114B		Ring - Clutch disc retaining 0.051 in. thick						As Req'd	All
	19114C		Ring - Clutch disc retaining 0.063 in. thick						As Req'd	All
	19114D		Ring - Clutch disc retaining 0.090 in. thick						As Req'd	All
	19114E		Ring - Clutch disc retaining 0.100 in. thick						As Req'd	All
	19114F		Ring - Clutch disc retaining 0.112 in. thick						As Req'd	All
	19114G		Ring - Clutch disc retaining 0.124 in. thick						As Req'd	All
	19114H		Ring - Clutch disc retaining 0.071 in. thick						As Req'd	All
-34	19050		Disc						1	A
	28113		Disc - Friction clutch						1	BCDE
-35	101179		Nut - Hex 7/16-20						1	All
-36	101093		Washer						1	All
-37	19074		Rotor Assembly - Clutch (Not available - Order Rotor Assembly #28918A)						1	All
-38	19755	.	Spring - Pawl						1	All
-39	19072A	.	Pin - Pivot						2	All
-40	19572A	.	Pin - Pivot						2	All
-41	19046	.	Pawl - Starter						2	All
-42	19124A	.	Spring - Clutch						4	All
-43	19068	.	Shoe - Clutch						4	All
-44	19075A	.	Spider Assembly - Clutch						1	All
-45	102692	.	Washer						4	All

Replacement Rotor Assembly #28918A										
-46	28918A		Rotor Assembly						1	All
-47	28910	.	Spring - Clutch						1	All
-48	28766	.	Spring - Pawl						1	All
-49	28915A	.	Shoe - Clutch						4	All
-50	28919A	.	Pawl Assembly						1	All
-51	28917	.	Pin - Pivot						2	All
-52	28765	.	Pawl - Starter						2	All
-53		.	Clutch Assembly (Not available - Order Pawl Assembly #28918A)						1	All
-54	100199		Key - Woodruff No. 404						1	All
-55	28072A		Clutch Drum and Pinion Assembly						1	ABCD
	28531A		Clutch Drum Assembly						1	E
-56	19071	.	Bearing - Clutch						1	All

FIGURE 9. MODEL 4-30, 4-30A, 47 AND 73 CARBURETORS.

FIG. & INDEX NO.	PART NO.	DESCRIPTION							UNITS PER ASSY	USABLE ON CODE
		1	2	3	4	5	6	7		
Code: "B" indicates parts used on Model 4-30 engines. "C" indicates parts used on Model 4-30A engines. "D" indicates parts used on Model 47 engines. "E" indicates parts used on Model 73 engines.										
9-1	102101		Screw - Hex hd 10-24 x 7/8 in. lg						1	BCDE
-2	100002		Washer						1	BCD
	100003		Washer - Plain No. 10						1	E
-3	101191		Nut - Hex 10-24						1	BCDE
-4	19239		Screw						1	BCDE

3-25, 4-30 SERIES
ENGINES

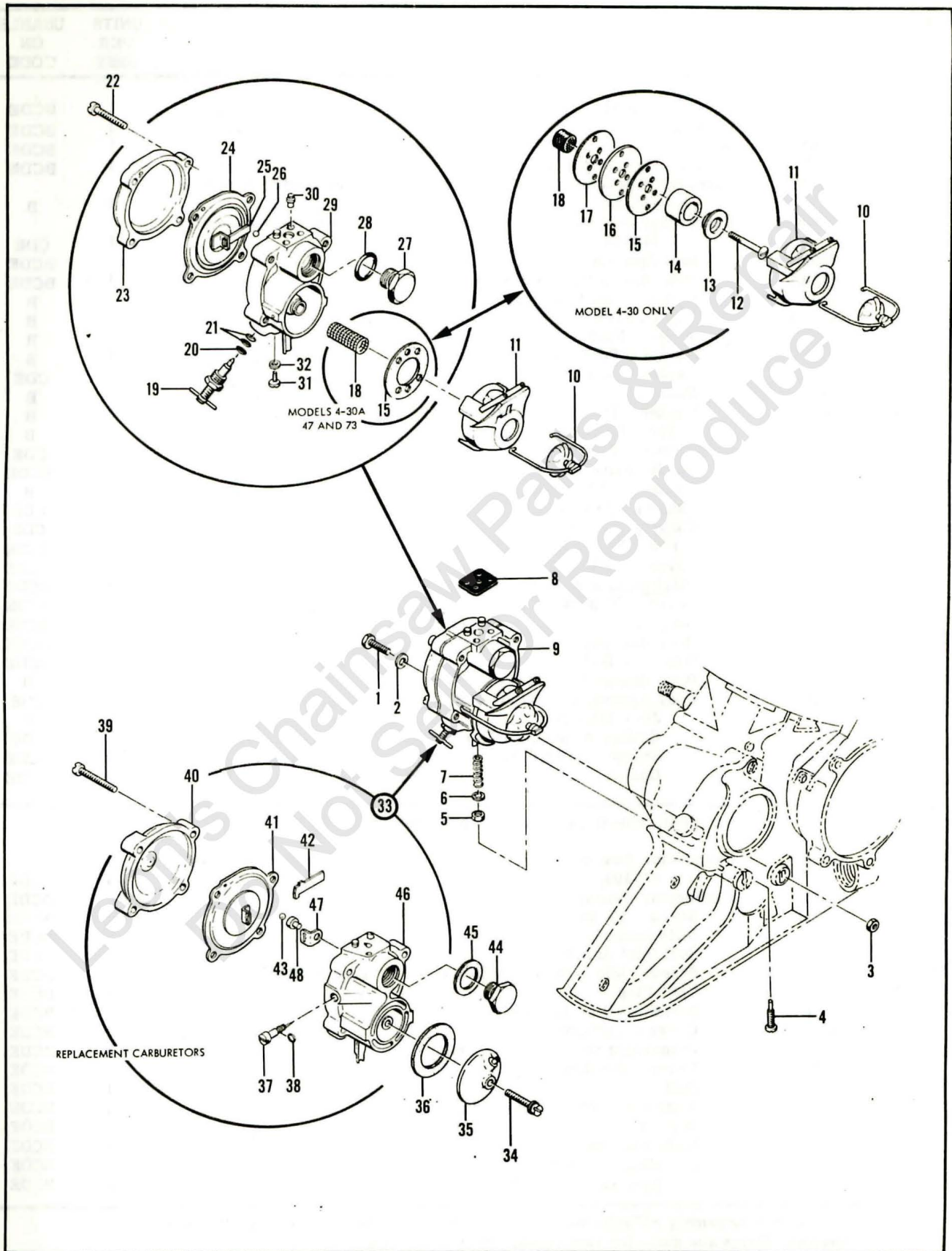


Figure 9. Model 4-30, 4-30A, 47 and 73 Carburetors

3-25, 4-30 SERIES ENGINES

FIGURE 9. (CONT)

FIG. & INDEX NO.	PART NO.	DESCRIPTION							UNITS PER ASSY	USABLE ON CODE
		1	2	3	4	5	6	7		
9-5	101075	Nut - Hex 10-32							1	BCDE
-6	100296	Lockwasher - No. 6							1	BCDE
-7	19183	Spring							1	BCDE
-8	19697	Gasket - Carburetor to crankcase							1	BCDE
-9	19662	Carburetor Assembly (Not available - Order Carburetor Assembly #47393)							1	B
	19662C	Carburetor Assembly (Not available - Order Carburetor Assembly #47393)							1	CDE
-10	19605	Bail Assembly							1	BCDE
-11	28558A	Bowl Assembly - Sediment							1	BCDE
-12	19840	Screw - Fuel filter							1	B
-13	19602A	Cap - Filter							1	B
-14	19603	Filter - Fuel							1	B
-15	19842	Gasket - Fuel filter bowl							1	B
	28539	Gasket - Bowl							1	CDE
-16	19841	Plate							1	B
-17	19842	Gasket - Fuel filter bowl							1	B
-18	19598A	Filter - Diaphragm							1	B
	28538	Screen - Fuel							1	CDE
-19	19782A	Needle Valve Assembly							1	BCDE
-20	101758	Packing - "O" ring							1	B
	19899	Packing - Needle							1	CDE
-21	19899	Packing - Needle							2	CDE
-22	101965	Screw - Fil hd 10-24 x 7/8 in. lg							4	BCDE
-23	19615A	Cover - Carburetor							1	BCDE
-24	28696A	Diaphragm and Gasket Assembly							1	BCDE
-25	19626	Lever - Diaphragm							1	BCDE
-26	100302	Ball							1	BCDE
-27	19670	Body Assembly - Shut off valve							1	BCDE
-28	19673	Washer - Body							1	BCDE
-29	19630A	Body Assembly - Carburetor							1	B
	19630C	Body Assembly - Carburetor							1	CDE
-30	19769	Jet - Idler fuel							1	B
	28602	Orifice Assembly - Carburetor							1	CDE
-31	103934	Screw - Rd hd 6-32 x 1/4 in. lg							1	BCDE
-32	101838	Gasket							1	BCDE

Replacement Carburetor Assemblies #47559A* and #47393

-33	47559A	Carburetor Assembly (Not available - Order Carburetor Assembly #47393)							1	BCDE
	47393	Carburetor Assembly							1	BCDE
-34	100258	Screw - Rd hd 10-24 x 1 in. lg							1	BCDE
-35	28952	Inlet Assembly							1	BCDE
-36	28954	Seal Inlet Assembly							1	BCDE
-37	47557	Screw - Idle adjustment (Includes "O" Ring #102155)							1	BCDE
-38	102155	"O" Ring							1	BCDE
-39	101965	Screw - Fil hd 10-24 x 7/8 in. lg							4	BCDE
-40	19615A	Cover - Carburetor							1	BCDE
-41	28696A	Diaphragm and Gasket Assembly							1	BCDE
-42	19626	Lever - Diaphragm							1	BCDE
-43	100302	Ball							1	BCDE
-44	19670	Body Assembly - Shut off valve							1	BCDE
-45	19673	Washer							1	BCDE
-46	28949A	Body Assembly - Carburetor							1	BCDE
-47	19625	Hinge - Diaphragm							1	BCDE
-48	28737	Seat Assembly - Check valve							1	BCDE

*Carburetor Assembly #47559A was an earlier replacement carburetor on the listed engines. Parts are same for both replacement carburetors.

3-25, 4-30 SERIES ENGINES

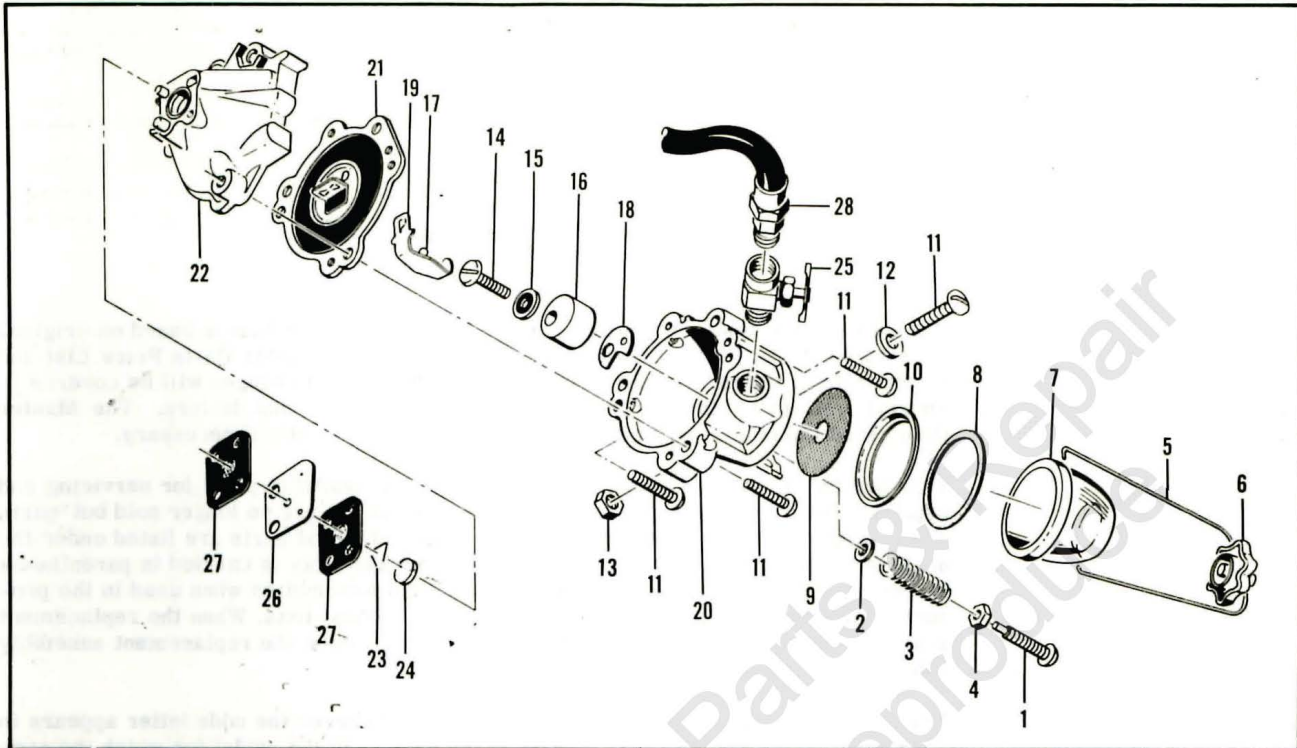


Figure 10. Model 3-25 Carburetor

FIGURE 10. MODEL 3-25 CARBURETOR.

FIG. & INDEX NO.	PART NO.	DESCRIPTION	UNITS PER ASSY	USABLE ON CODE
		1 2 3 4 5 6 7		
Code: "A" indicates parts used on Model 3-25 engines.				
10-1	19239	Screw	1	A
-2	100296	Washer - No. 6	1	A
-3	19183	Spring	1	A
-4	101075	Nut - Hex 10-32	1	A
-5	19386	Bail Assembly	1	A
-6	19388	Cup Nut Assembly	1	A
-7	17167A	Bowl	1	A
-8	17168A	Gasket	1	A
-9	19805	Filter - Sediment bowl	1	A
-10	19808	Retainer - Filter	1	A
	19214	Carburetor	1	A
-11	101992	Screw - Rd hd 10-24 x 7/8 in. lg	4	A
-12	100352	Washer	1	A
-13	101191	Nut - Hex 10-24	1	A
-14	101904	Screw - Pan hd 10-24 x 3/4 in. lg	1	A
-15		Washer - Lock-O-Seal	1	A
-16	19486B	Ball Seat Assembly	1	A
-17	100302	Ball	1	A
-18	19487	Gasket - Ball seat	1	A
-19	19148A	Hook and Pin Assembly	1	A
-20	19489	Body - Diaphragm chamber	1	A
-21	19164	Diaphragm Assembly	1	A
-22	19178	Cover Assembly	1	A
-23	19268	Retaining Ring	1	A
-24	19267	Valve - Check	1	A
-25	101437	Valve - Shut-off	1	A
-26	19155	Plate - Orifice	1	A
-27	19697	Gasket - Carburetor to crankcase	2	A
-28	101271	Fuel Line	1	A

3-25, 4-30 SERIES ENGINES

The information contained in this Master Illustrated Parts List is based on original Illustrated Parts Lists, Engineering Records and the Master Parts Price List and is accurate to the best of our knowledge. Additions and changes will be covered in special lists to be issued periodically to distributors and dealers. The Master Illustrated Parts List will be revised and reissued annually if necessary.

This Master Illustrated Parts List carries all the available parts for servicing and repairing the listed chain saw engines. When assemblies are no longer sold but parts are available for repair of the assemblies, the individual parts are listed under the no-longer available assembly and the replacement assembly is carried in parenthesis directly after the name of the part. Replacement assemblies when used in the production of other models appear in sequence in the various lists. When the replacement assembly was not used in the production of other models, the replacement assembly and its parts are boxed.

Each chain saw model is given a code letter. Whenever the code letter appears in the right hand column, the part is used on the engines of the model for which the code letter stands. When a part is used on all models covered in the Master Illustrated Parts List, the word "All" appears in the right-hand column instead of the code letters. When a model uses two different assemblies to do the same thing, earlier engines using the first assembly are coded as (for example) "A¹" and the later engines with the second assembly are coded "A²".

Names of parts have been checked and made to agree with the names given in the Master Parts Price List except in a very few cases where additional nomenclature was required.

The illustrations of the individual parts do not necessarily picture all the differences between parts with the same item number because the illustrations would be too complicated for use if they did. Instead, the illustration shows a representative part for each item number.