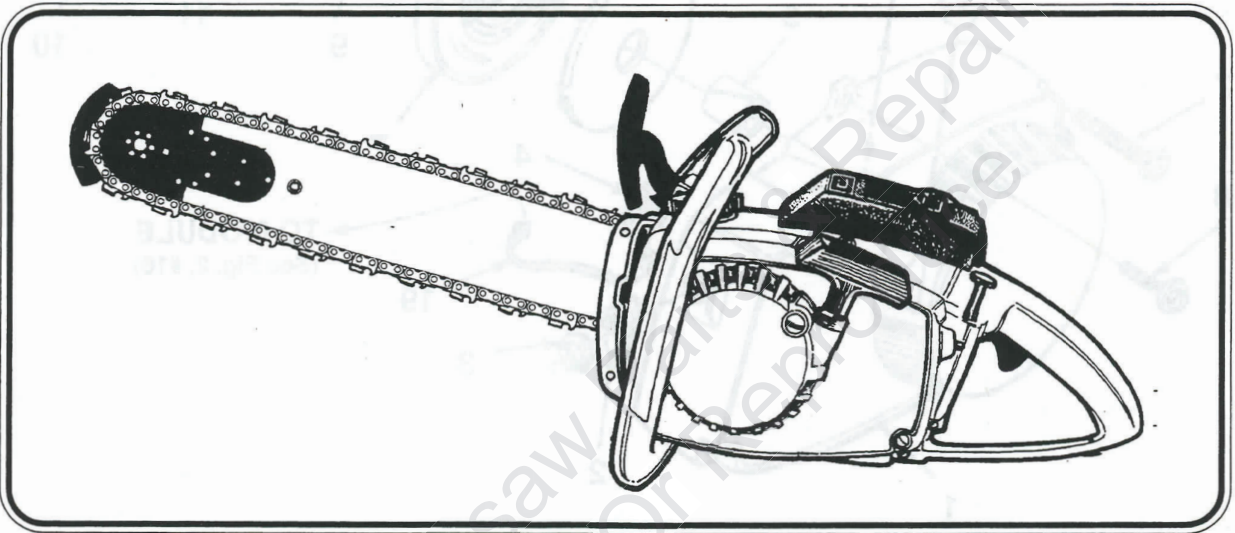


JOHN DEERE

PARTS LIST



350CS
UT10762



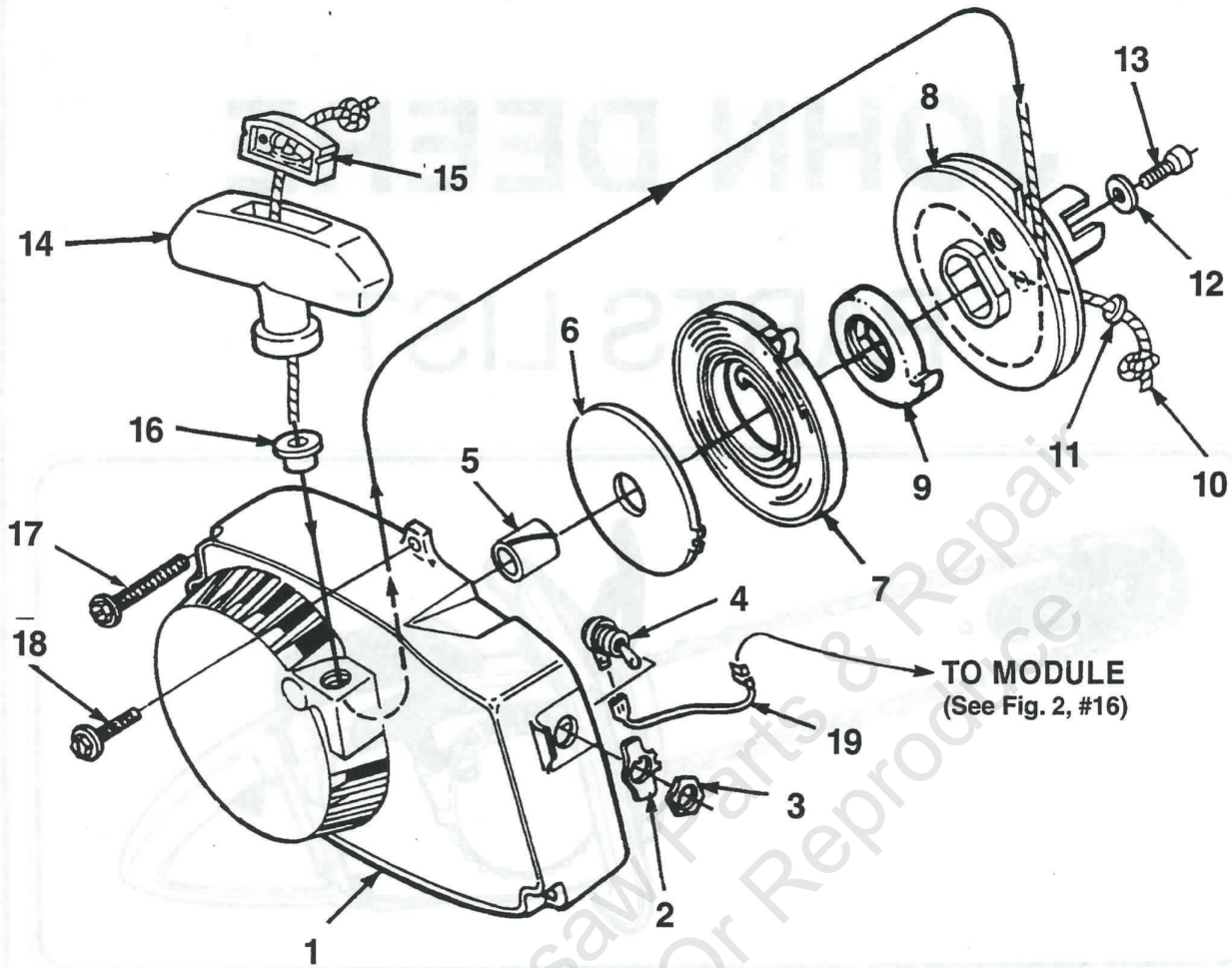
PRINTED IN U.S.A.

P.O. BOX 7047
14401 Carowinds Blvd.
Charlotte, N.C. 28241

P/N 19830

Figure 1

STARTER



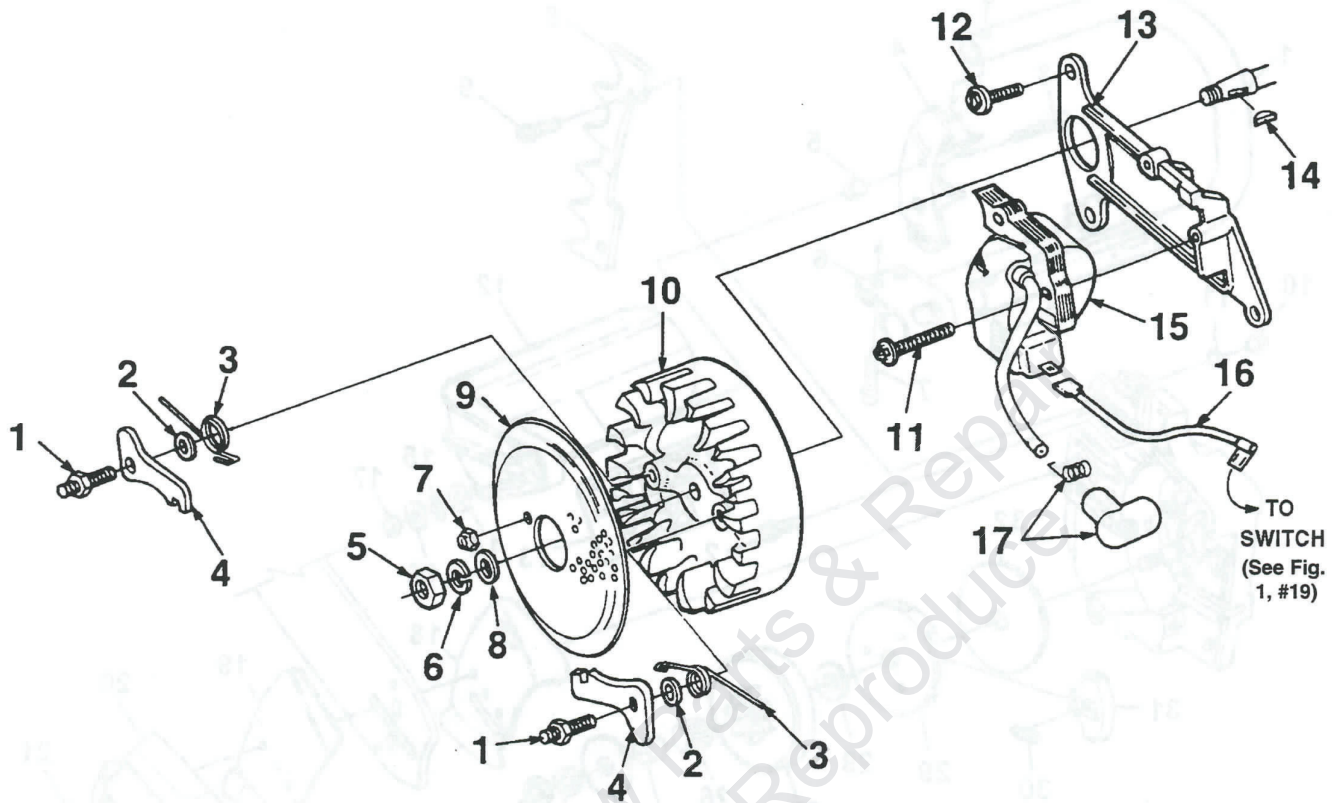
NO.	PART NO.	DESCRIPTION	Qty.
1	• A 06726 3	STARTER-Complete	1
2	95231	PLATE- On & Off	1
3	72084 A1	NUT- Hex Locking	1
4	96831	SWITCH & LEAD	1
5	64443	BUSHING-Starter	1
6	59638 B	SHIELD-Spring (Inner)	1
7	A 94842	SPRING- Recoil	1
8	• A 64446	PULLEY-Starter	1
9	94827	BUSHING-Spring	1
10	• A 93875	ROPE-Starter (48")	1
11	93862	WASHER-Flat Nylon	1
12	58763	WASHER-Retainer	1
13	80648	SCREW-Hex (10-32 X 1/2")	1
14	• A 69962 B	GRIP-Starter Rope	1
15	70018 A	INSERT	1
16	67177	BUSHING-Rope	1
17	58963	SCREW-Hex (12-24 X 11/16)	3
18	80899	SCREW-Hex (12-24 X 9/16)	1
19	A 94850	LEAD-Ground (Solid State)	1

• ASSEMBLIES

ALWAYS FURNISH MODEL AND SERIAL NUMBERS WHEN ORDERING PARTS.

IGNITION

Figure 2



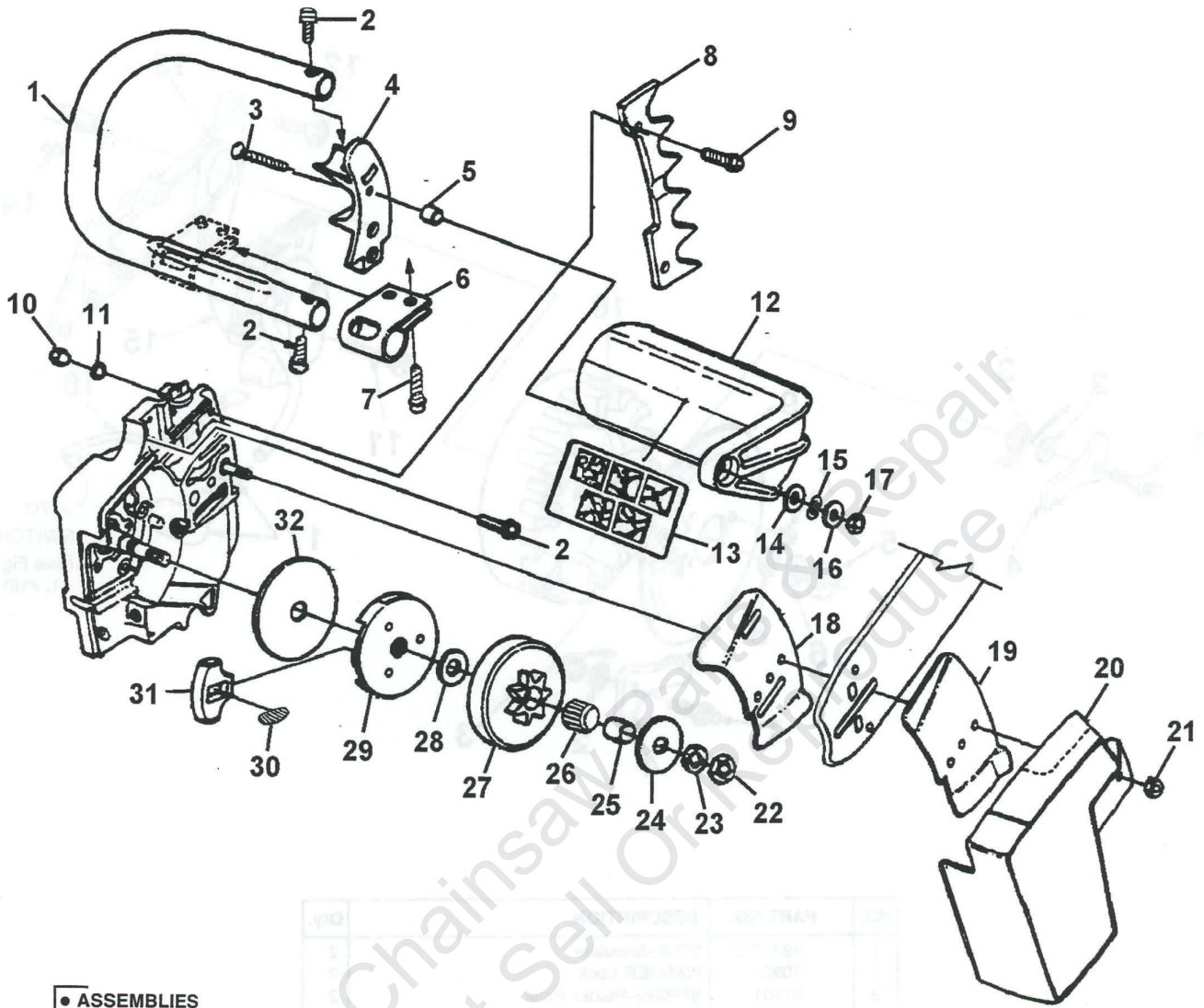
NO.	PART NO.	DESCRIPTION	Qty.
1	58757 E	STUD-Shoulder	2
2	70901	WASHER-Lock	2
3	01101	SPRING-Starter Pawl	2
4	58756 A	PAWL-Starter	2
5	81117	NUT-Hex (5J/16-24)	1
6	83002	WASHER-Lock (5/16)	1
7	81206	NUT-Center Lock (#10-32)	2
8	84056	WASHER-Flat (5/16)	1
9	58765	SCREEN-Starter	1
10	94588	ROTOR-Magneto	1
11	82248	SCREW-Hex Washer Hd. (8-32 X 3/4)	2
12	80899	SCREW-Hex Hd. (12-24 X 9/16)	3
13	94326 1	PLATE-Ignition Coil Mtg. (Solid State)	1
14	75078	KEY-Woodruff	1
15	94589 AS	MODULE & CORE	1
16	A 94850	LEAD-Ground (Solid State)	1
17	A 33055	TERMINAL-High Tension	1

• ASSEMBLIES

ALWAYS FURNISH MODEL AND SERIAL NUMBERS WHEN ORDERING PARTS.

Figure 3

HANDLE and CLUTCH



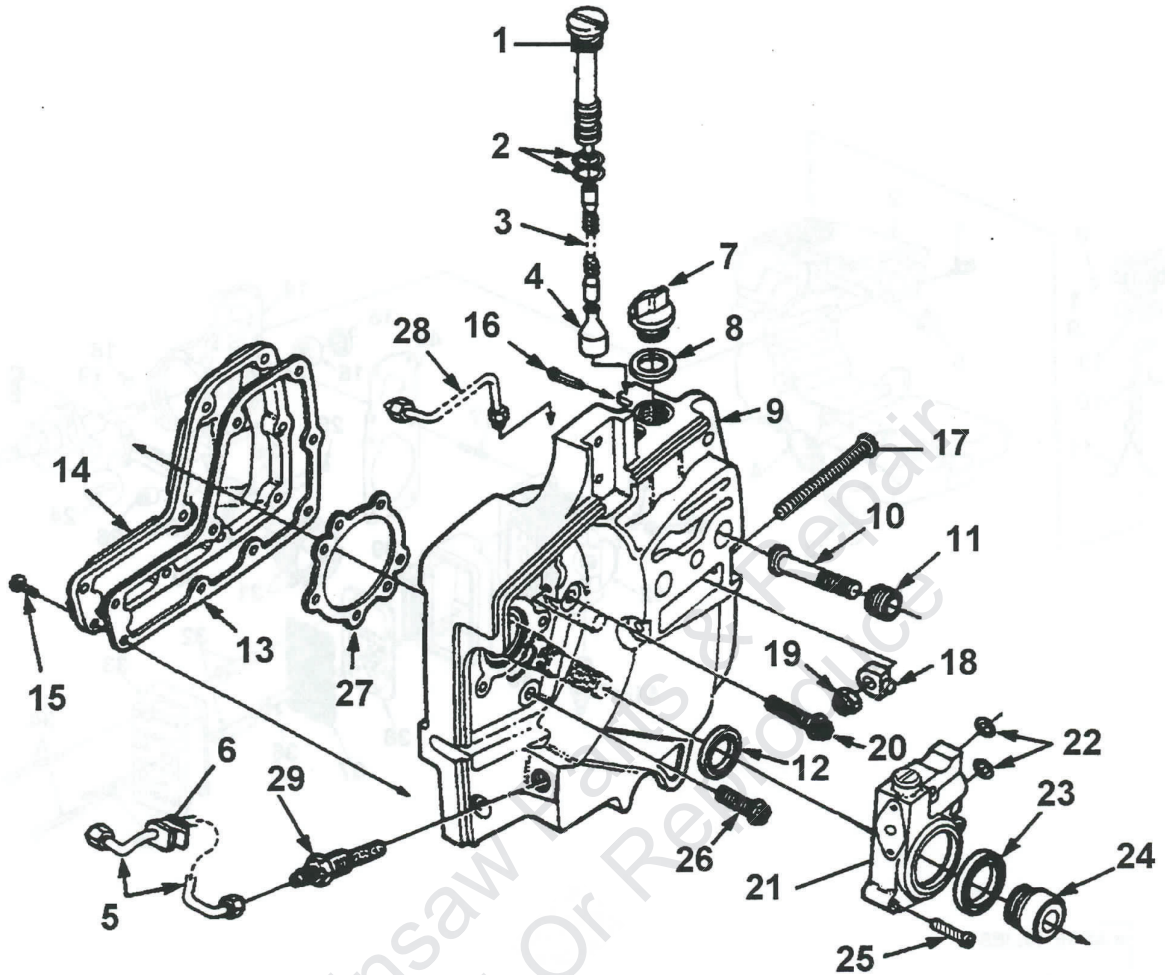
• ASSEMBLIES

NO.	PART NO.	DESCRIPTION	Qty.	NO.	PART NO.	DESCRIPTION	Qty.
1	A 98080	HANDLE BAR-Flush Cut	1	18	•A 70618	GUIDE BAR PLATE KIT	1
2	80428 1	SCREW-Soc Hd. (1/4-20 X 1")	1	19	70399	PLATE-Guide Bar (Inner)	1
3	82223	SCREW-Flat Hd. (12-24 X 1 1/4")	4	19	70400	PLATE-Guide Bar (Outer)	1
4	59651 20	BRACKET-Handle Bar	1	20	A 08342	COVER-Drive Case	1
5	95937	SPACER	1	21	81089 2	NUT-Hex (3/8-16)	1
6	63291 A	CLAMP-Handle Bar	1	22	81124 A	NUT-Lock (3/8-24)	1
7	80867	SCREW-Mach. Hex Hd. (12-24 X 3/4")	4	23	83018	WASHER-Lock (3/8")	1
8	•A 59043	BUMPER SPIKE KIT (Accessory)	1	24	65064	WASHER-Thrust (Outer)	1
9	80867	SCREW-Hex (12-24 X 3/4")	2	25	65746 B	RACE-Inner	1
10	81068	NUT-Hex (12-24)	2	26	64124	BEARING-Roller	1
11	70901	WASHER-Lock (#12)	2	27	A 95459	SPROCKET & DRUM (7 Tooth Std)	1
12	•A 95088 A	HAND GUARD	1	28	58833	WASHER-Thrust (Inner)	1
13	02661	DECAL-Hand Guard	1	28	•A 69480 C	CLUTCH & COVER	1
14	84065	WASHER-Flat	1	29	65760 1B	PLATE-Clutch	1
15	96757	WASHER-Spring Wave	1	30	67053	SPRING-Clutch	3
16	95935	WASHER-(5/16)	1	31	69461	SHOE-Clutch	3
17	81225	NUT (12-24)	1	32	95054	COVER-Clutch	1

ALWAYS FURNISH MODEL AND SERIAL NUMBERS WHEN ORDERING PARTS.

OIL PUMP and DRIVECASE

Figure 4



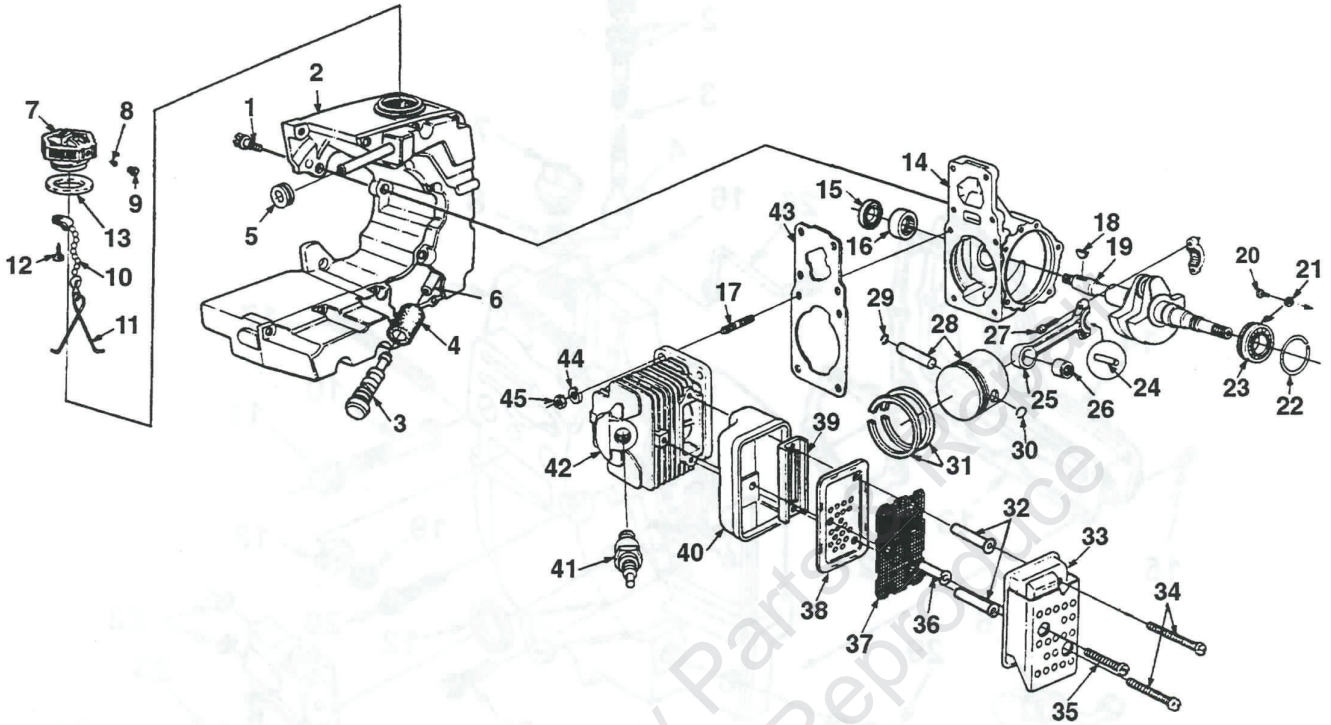
● ASSEMBLIES

NO.	PART NO.	DESCRIPTION	Qty.	NO.	PART NO.	DESCRIPTION	Qty.
1	● A 69371	OIL FILTER ASSEMBLY	1	17	63225	SCREW-Guide Bar Adjusting	1
	59325 2	TUBE-Oil Line	1	18	93039	PIN-Bar Adjusting	1
2	59765	"O" RING	1	19	81204	NUT-Lock (1/4-20)	1
3	70309 09	TUBING-Rubber (2 1/4")	1	20	80864	SCREW-Hex (12-24 X 1")	1
4	A 68593	FILTER-Oil	1	21	● A 00007 A	PUMP-Automatic Oil	1
5	● A 59819	LINE-Oil	1	22	59074	"O" RING	2
6	59794	GROMMET	1	23	59926	SEAL-Felt	1
7	● A 63717 C	CAP-Filler Oil	1	24	00001	WORM GEAR, OIL PUMP	1
8	56607	GASKET	1	25	82248	SCREW-Fil (8-32 X 3/4")	3
9	● A 08430	DRIVECASE ASSEMBLY	1	26	80899	SCREW-Hex (12-24 X 9/16)	4
10	67475	STUD-Guide Bar (3/8)	2	27	63355	GASKET-Crankcase	1
11	67476	INSERT-Threaded	2	28	A 59806	LINE-Oil (Discharge)	1
12	58308 B	SEAL	1	29	A 59804 A	FILTER-Oil (Manual Oil)	1
13	59710	GASKET-Oil Reservoir	1				
14	96453 4	COVER-Oil Reservoir	1				
15	82564	SCREW-Thread Form. (6 X 1/2")	9				
	80742	SCREW-Set (Not Shown)	1				
16	86301	PIN-Cotter	1				

ALWAYS FURNISH MODEL AND SERIAL NUMBERS WHEN ORDERING PARTS.

Figure 5

ENGINE and FUEL TANK



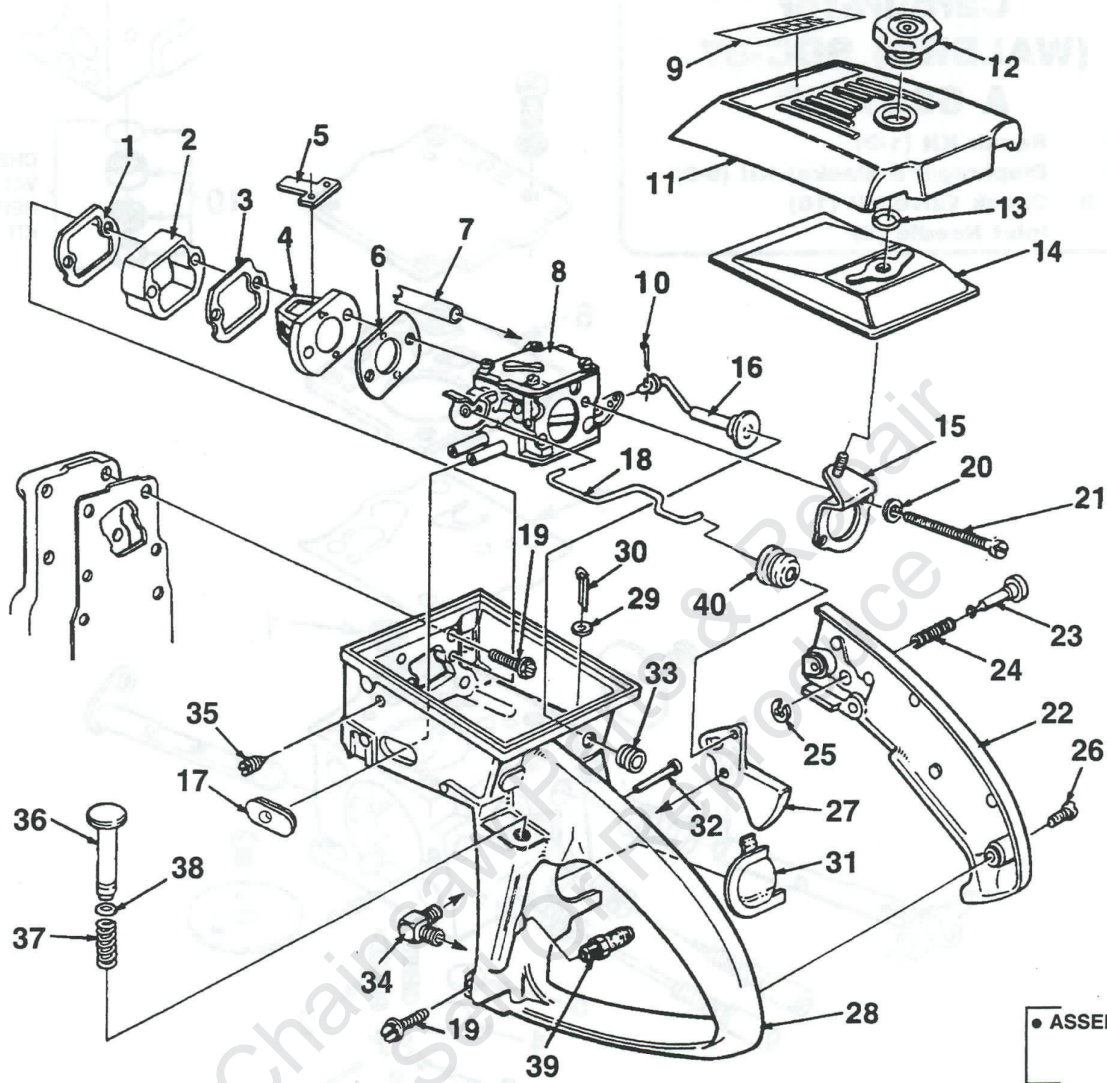
● ASSEMBLIES

NO.	PART NO.	DESCRIPTION	Qty.	NO.	PART NO.	DESCRIPTION	Qty.
1	63407	SCREW-Shoulder	3	24	A 69054	ROLLER SET (31)	1
2	●A 08424	FUEL TANK	1	25	●A 63477	ROD-Connecting	1
3	●A 69923	FILTER-Fuel	1	26	93369	BEARING	1
4	64083	FELT FILTER	1	27	69919	SCREW-Cap Soc. Hd.	2
5	68046	GROMMET	1	28	●A 68438	PISTON & PIN	1
6	70310 37	TUBING-Rubber (9 1/4")	1	29	75120	RING-Retaining	1
7	●A 69499 1	CAP-Fuel Filler	1	30	64813	RING-Retaining	1
8	69451	VALVE-Check	1	31	59436 1A	PISTON RING	2
9	69454	FILTER-Fuel Cap	1	B	●A 94219 A	MUFFLER ASSEMBLY	1
10	69502	CHAIN-Bead	1	32	93983 01	SPACER-Muffler	2
11	96535	RETAINER	1	33	A 95988	CAP-Muffler & Shield	1
12	82256 A	SCREW-Pan Hd. (#6 X 1/4")	1	34	94128	SCREW-Hex Hd. (12-24 X 2 1/4")	2
13	69501	GASKET-Fuel Filler Cap	1	35	94129	SCREW-Hex Hd. (12-24 X 1 7/8")	1
14	●A 65736	CRANKCASE	1	36	93983 02	SPACER-Muffler	1
15	12282 A	SEAL	1	37	93979	SCREEN-Spark Arrestor	1
16	58956	BEARING	1	38	93980	BAFFLE-Muffler	1
17	96127 A	STUD-Cylinder	4	39	94133 A	PLATE-Muffler	1
18	75078	KEY-Woodruff	1	40	93981	BODY-Muffler	1
19	93595	CRANKSHAFT	1	41	63547 S	SPARK PLUG (CJ8)	1
20	70306	SCREW-Torx	2	42	●A 69714	CYLINDER	1
21	59705	WASHER-Lock	2	43	59771	GASKET - Cylinder	1
22	58319 A	RING-Retaining	2	44	83061	WASHER-Lock (1/4")	4
23	58190	BEARING-Ball	2	45	96212	NUT (1/4 - 28)	4

ALWAYS FURNISH MODEL AND SERIAL NUMBERS WHEN ORDERING PARTS.

THROTTLE HANDLE and CARBURETOR

Figure 6



NO.	PART NO.	DESCRIPTION	Qty.
1	59274	GASKET-Spacer	1
2	59718	SPACER-Heat Dam	1
3	63260 A	RETAINER-Reed Valve	1
4	63253	SEAT-Reed Valve	1
5	59678 B	VALVE-Reed	4
6	59722	GASKET-Carburetor	1
7	70310 37	LINE-Fuel (9 1/4")	1
8	A 68371 C	CARBURETOR-Walbro	1
	A 07048	CARBURETOR-Zama	1
9	08341	LABEL-Deere	1
10	86324	PIN-Cotter	1
11	58773 3A	COVER-Air Filter	1
12	A 65272	NUT-Air Filter Cover	1
13	58319 A	RING-Retaining	1
14	63589 A	ELEMENT-Air Filter	1
15	A 59822 B	BRACKET-Mounting	1
16	68130 1	ROD-Choke	1
17	A 07047	GROMMET KIT	1
18	59763	ROD-Throttle	1
19	80891	SCREW-Hex (12-24 X 7/8")	5
20	83046	WASHER-Lock (#10)	2
21	80921	SCREW-Hex (10-32 X 2 11/16")	2

NO.	PART NO.	DESCRIPTION	Qty.
22	•A 06727 1	COVER-Throttle Handle	1
	67752	BUSHING-Pin (Not Shown)	1
23	95671	PIN-Throttle Latch	1
24	58405	SPRING-Throttle Latch	1
25	58409	RING-Retaining	1
26	80560	SCREW-Pan (8-32 X 1/2")	2
27	58859 A	TRIGGER-Throttle	1
28	•A 06729 1	THROTTLE HANDLE	1
29	63290	WASHER-Felt	1
30	86301	PIN-Cotter	1
31	93209	SHIELD-Spark Plug	1
32	94142	PIN, Oil Plunger Retaining	1
33	A 59011	VALVE-Check	1
34	63302 B	SCREW-Idle	1
35	58362	GROMMET KIT	1
36	•A 93783	PLUNGER-Spring	1
37	59293	SPRING-Compression	1
38	74388	"O" RING	1
39	A 59818	VALVE-Check	1
40	67634	BOOT- Throttle Rod	1

Figure 7

CARBURETOR

Carburetor (WALBRO) SDC-87 A 68371 C

- 67020 Repair Kit (1-9)
- 98630 Diaphragm & Gasket Kit (6-9)
- 90310 B Check Valve Kit (10)
- 97942 Inlet Needle (2)

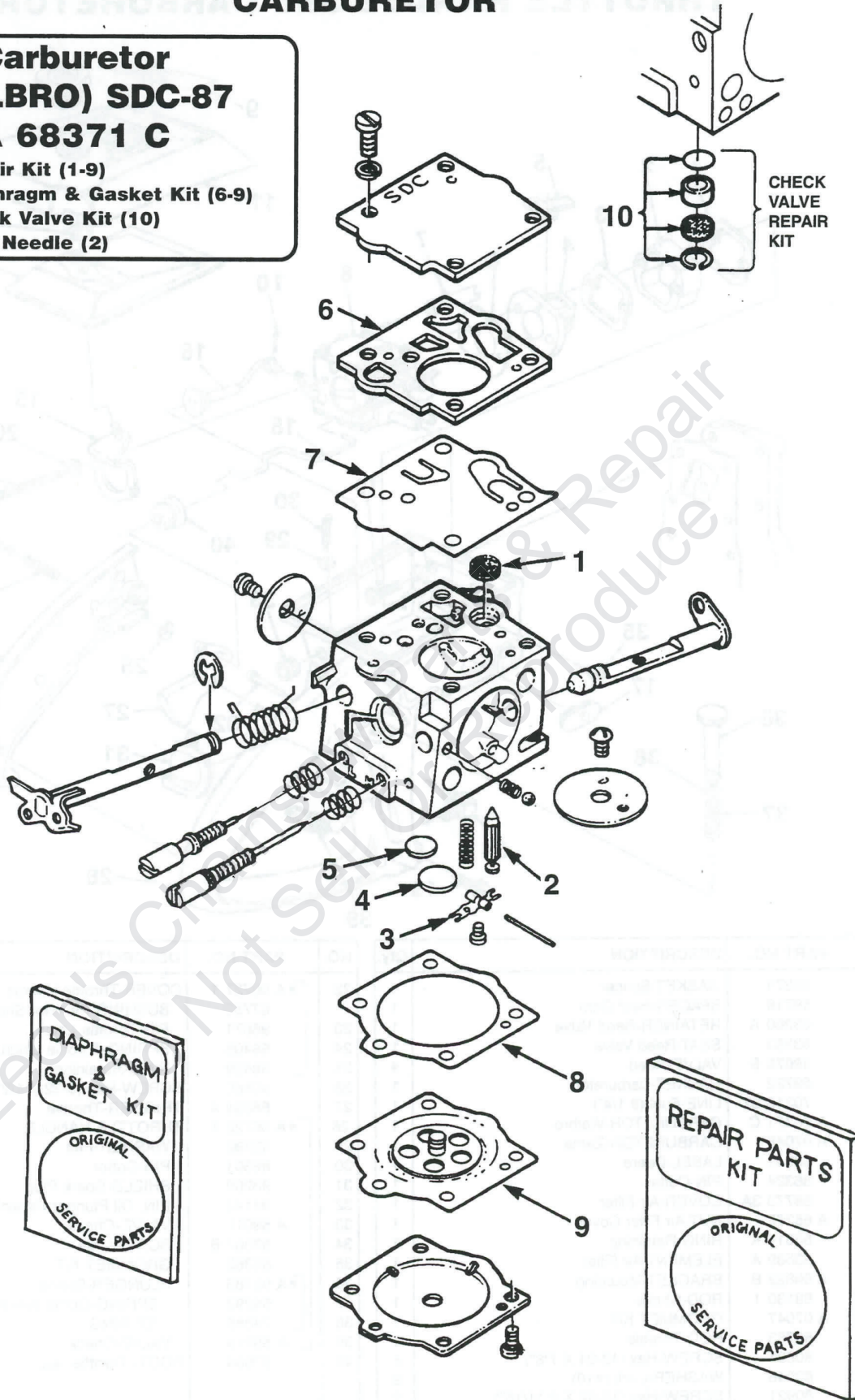
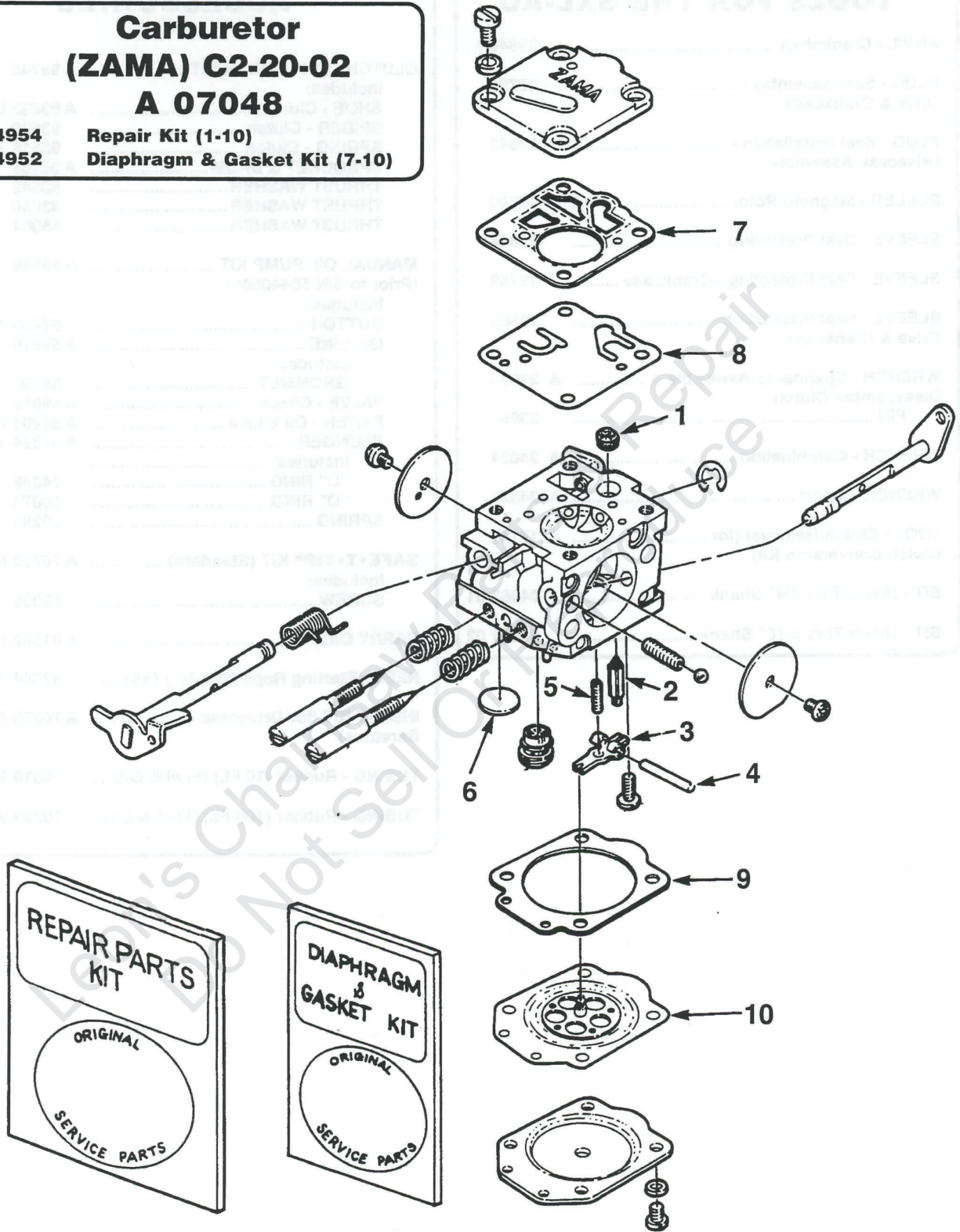


Figure 8

CARBURETOR

Carburetor (ZAMA) C2-20-02 A 07048

94954 Repair Kit (1-10)
94952 Diaphragm & Gasket Kit (7-10)



ALWAYS FURNISH MODEL AND SERIAL NUMBERS WHEN ORDERING PARTS.

TOOLS & ACCESSORIES

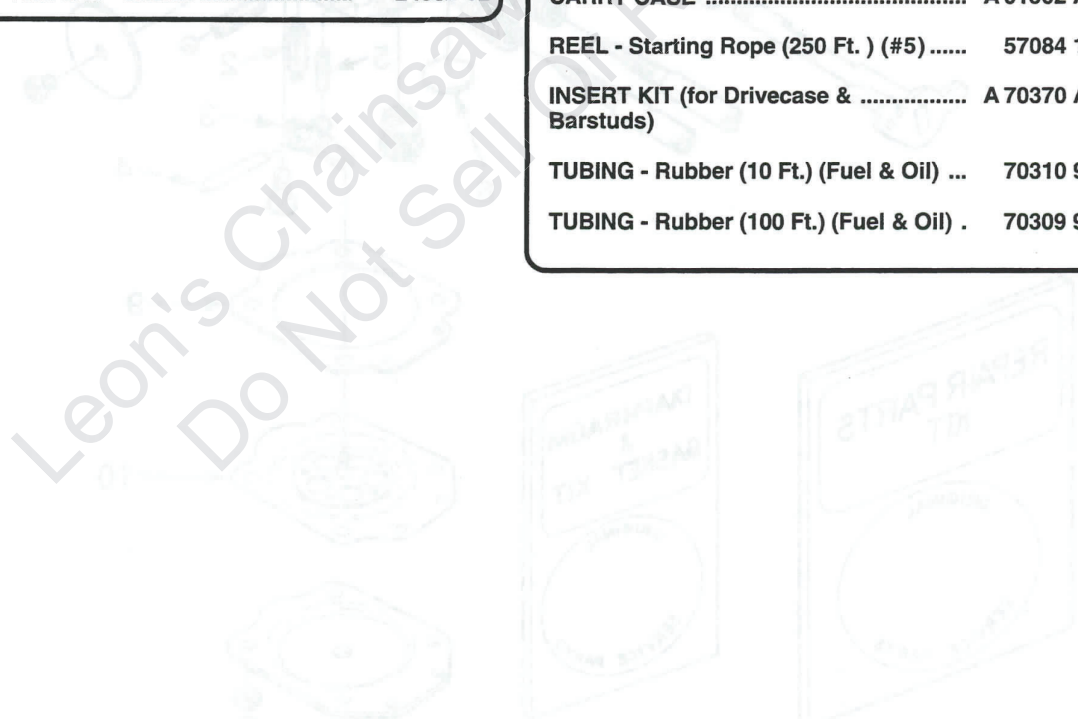
TOOLS FOR THE SXL-AO

ANVIL - Crankshaft	23846 4
PLUG - Seal Assembly - Drive & Crankcase	23758
PLUG - Seal Installation - Drivecase Assembly	23845
PULLER - Magneto Rotor	A 24290
SLEEVE - Seal Protecting	23844
SLEEVE - Seal Protecting - Crankcase	23759
SLEEVE - Seal Installation - Drive & Crankcase	23800
WRENCH - Spanner to Assemble & Disassemble Clutch	A 23934
PIN	23954
WRENCH - Combination	A 24824
WRENCH - Insert	A 24322
TOOL - Clutch Removal (for Clutch Conversion Kit)	A 17146
BIT - Driver Torx 1/4" Shank	24982 01
BIT - Driver Torx 5/16" Shank	24982 02

ACCESSORIES

QTY.

CLUTCH CONVERSION KIT	A 96745	.. 1
Includes:		
SHOE - Clutch	A 93632 B	.. 3
SPIDER - Clutch	93639	.. 3
SPRING - Clutch	93814 A	.. 3
SPROCKET & DRUM	A 95465	.. 1
THRUST WASHER	93643	.. 1
THRUST WASHER	93650	.. 1
THRUST WASHER	65064	.. 1
MANUAL OIL PUMP KIT	A 65868	.. 1
(Prior to S/N 50440501)		
Includes:		
BUTTON	57289 1	.. 1
OIL LINE	A 59819	.. 1
Includes:		
GROMMET	59794	.. 1
VALVE - Check	A 59818	.. 1
FILTER - Oil Intake	A 59804 A	.. 1
PLUNGER	A 57834 10	.. 1
Includes:		
"O" RING	74388	.. 1
"O" RING	59074	.. 1
SPRING	59293	.. 1
SAFE•T•TIP® KIT (Standard)	A 70790 B	.. 1
Includes:		
SCREW	82335	.. 1
CARRY CASE	A 01502 A	.. 1
REEL - Starting Rope (250 Ft.) (#5)	57084 1	.. 1
INSERT KIT (for Drivecase & Barstuds)	A 70370 A	.. 1
TUBING - Rubber (10 Ft.) (Fuel & Oil) ...	70310 99	.. 1
TUBING - Rubber (100 Ft.) (Fuel & Oil) .	70309 98	.. 1



NOTES

350CS UT10762 _____

Lined area for notes, containing a large, faint watermark that reads: "Leon's Chainsaw Parts & Repair Do Not Sell Or Reproduce".



JOHN DEERE

P.O. BOX 7047
Charlotte, N.C. 28241
Phone (704) 588 - 3200

Leons Chain Saw Parts & Repair
Do Not Sell or Reproduce