

HOMELITE



109.95
17"
146.95 Box

CHAIN SAW



PARTS LIST

DECEMBER 1959

HOMELITE **ZIP** CHAIN SAW

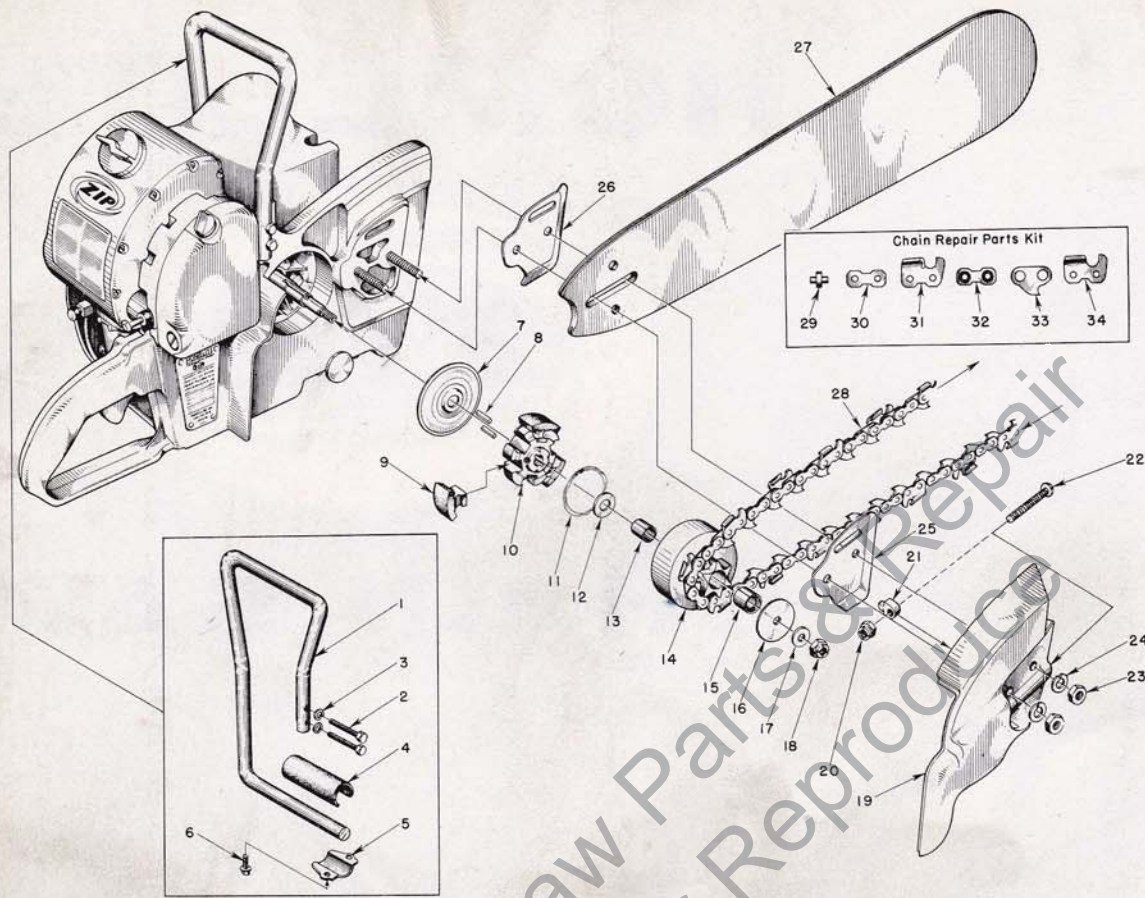


FIGURE 1 — SAW PARTS

DECEMBER 1959

Index No.	Part No.	Description	No. Required
1	A-56093	HANDLE	1
2	80087	SCREW — 5/16-18 x 1 1/2 hex hd.	2
3	83003	WASHER — 5/16 lock	2
4	55685	CUSHION — handle bar	1
5	55614	CLAMP — handle bar	1
6	80581	SCREW — 1/4-20 x 5/8	2
7	A-56101-A	COVER — clutch	1
8	55225-1	KEY — clutch	2
9	55076-1	SHOE — clutch	3
10	55075-3	SPIDER — clutch	1
11	55123-A	SPRING — clutch	2
12	55660-1	WASHER — thrust	1
13	55661	RACE — inner	1
14	A-56377	SPROCKET and DRUM (for 7/16 pitch chain)	1
15	55664	BEARING — needle (included in A-55662)	1
16	55163-1	WASHER — thrust	1
17	84010	WASHER — 3/8, flat	1
18	81116	NUT — 3/8-24 flex-lock	1
19	A-55668	COVER — drive case	1
		Includes	
20	81123	NUT — 5/16 hex-lock	1

Index No.	Part No.	Description	No. Required
21	55613	PIN — guide bar adjusting	1
22	80617	SCREW — 5/16-18 x 2 rd. hd.	1
23	81089	NUT — 3/8-16 hex	2
24	83018	WASHER — 3/8, lock	2
25	55667	PLATE — guide bar, outer	1
26	55666	PLATE — guide bar, inner	1
		HOMELITE EXTRA HARD TIP HARD TRACK BARS	
27	A-51545	12" BAR	1
	A-51517	17" BAR	1
	A-51521	21" BAR	1
		OREGON #62C 7/16 PITCH—CHIPPER CHAIN	
28	A-51542	12" CHAIN (w/kit)	1
	A-51535	17" CHAIN (w/kit)	1
	A-51536	21" CHAIN (w/kit)	1
	A-51529	REPAIR KIT — OREGON #62C CHAIN	1
		Includes	
29	51518	RIVET	4
30	A-51528	LINK — connecting (w/rivets)	2
31	51527	CUTTER — left	1
32	51519	LINK — connecting (plain)	2
33	51520	LINK — drive	1
34	51526	CUTTER — right	1

HOMELITE CHAIN SAW

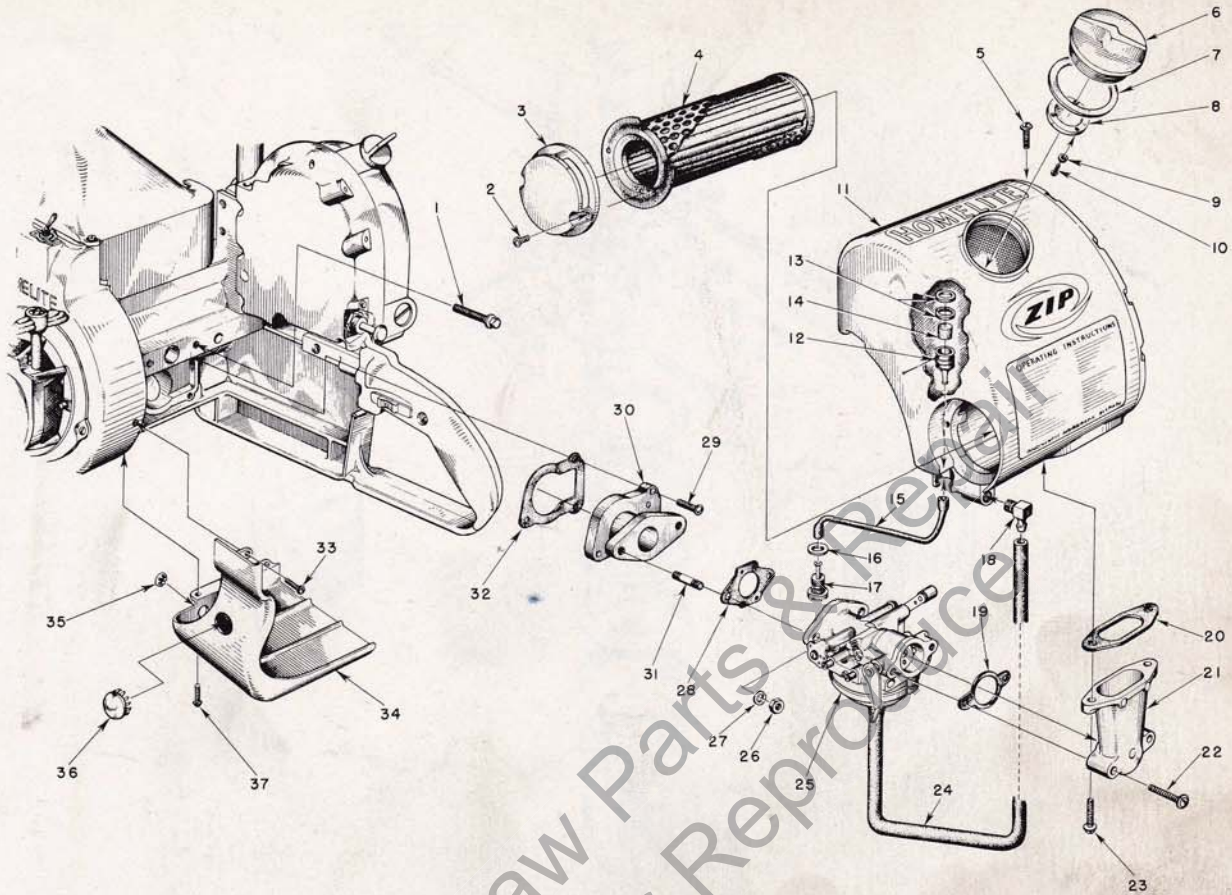


FIGURE 2 — FUEL SYSTEM

DECEMBER 1959

57041

Index No.	Part No.	Description	No. Required
1	80581	SCREW — ¼-20 x ⅝ hex hd.	2
2	80571	SCREW — 6-32 x ⅜ pan hd.	2
3	55494	CAP — air filter	1
4	56464	AIR FILTER	1
5	80572	SCREW — 10-32 x ⅝ pan hd.	1
6	A-55305	CAP — fuel	1
		Includes	
7	72173	GASKET	1
8	A-55301-C	VALVE — relief	1
9	80592	SCREW — 3-48 x ¼ rd. hd.	3
10	83083	WASHER — lock	3
11	A-55671	FUEL TANK	1
	56596	DECAL (Instructions)	1
	56400	DECAL (Homelite)	1
	56428	DECAL (ZIP)	1
12	A-56200	STRAINER — outlet, w/brass nail	1
		Includes	
13	56196	BUMPER — rubber	2
14	74374	FILTER — felt	1
15	55805	SLEEVE — flexible	1
16	55676	GASKET — outlet fitting	1

Index No.	Part No.	Description	No. Required
17	55572-A	FITTING — outlet	1
18	74917	ELBOW — fuel line connection	1
19	72971-1	GASKET — air elbow	1
20	55059	GASKET — adapter	1
21	55019-3	ADAPTER — air cleaner	1
22	80624	SCREW — 10-32 x 1 pan hd.	2
23	80572	SCREW — 10-32 x ⅝ pan hd.	2
24	55680	LINE — fuel	1
25		CARBURETOR	1
26	81013	NUT — ¼-20 hex	2
27	83009	WASHER — ¼ lock	2
28	55553	GASKET — carburetor	1
29	80583	SCREW — 10-32 x ¾ pan hd.	3
30	A-55679-A1	ADAPTER — reed valve	1
31	27464	STUD (part of A-55679-A1)	2
32	55116	GASKET — reed valve adapter	1
33	80560	SCREW — 8-32 x ½ pan hd.	1
34	55512-1	SHIELD — carburetor	1
35	55681	PLUG — button	1
36	29187	PLUG — button	1
37	80625	SCREW — 10-32 x ½ pan hd.	2

* For Brown CP Carburetor, See Figure 3.
For Tillotson HL-46B Carburetor, see Figure 4.

HOMELITE CHAIN SAW

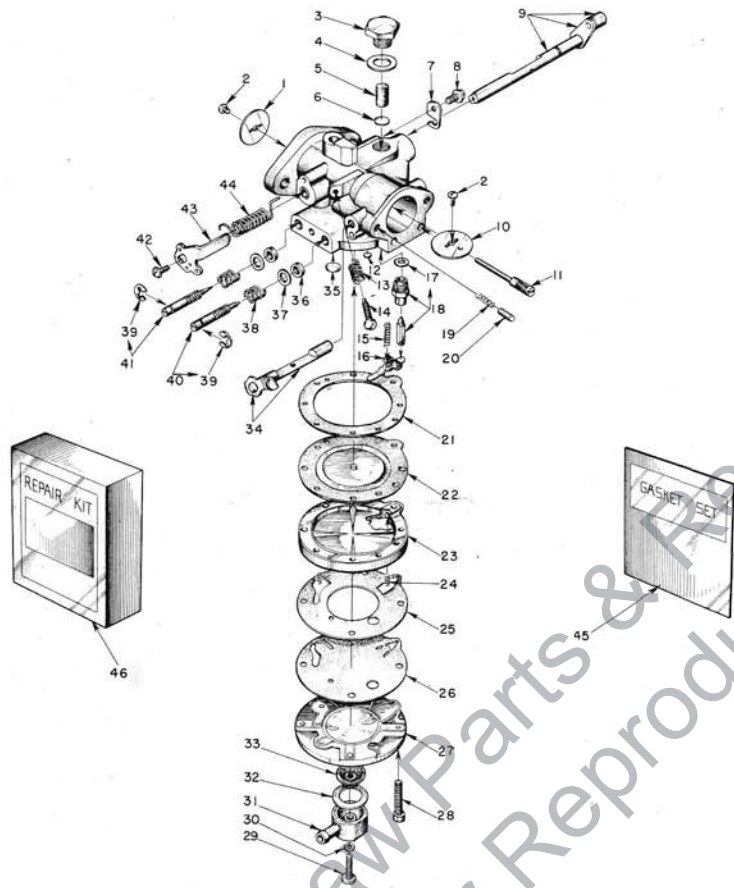


FIGURE 3 — BROWN CARBURETOR

DECEMBER 1959

Index No.	Part No.	Description	No. Required	Index No.	Part No.	Description	No. Required
	A-56505-A	CARBURETOR — BROWN CP	1	23	77301-A	COVER — main diaphragm	1
		Includes		24	77405	SPRING — flapper valve tension	2
1	74980	SHUTTER — throttle	1	25	*77305	GASKET — pump body	1
2	77044	SCREW — shutter, 4-40 x 1/8 rd. hd.	2	26	*77304	DIAPHRAGM — pump	1
3	†77306	SCREW — plug	1	27	A-77374	BODY — fuel pump	1
4	*77307	GASKET — plug screw	1	28	77160	SCREW — body, 6-32 x 3/4 fl. hd.	4
5	†77308	FILTER — felt	1	29	77320	SCREW — fuel connection	1
6	†77317	SCREEN — filter	1	30	*74997	GASKET — fibre	1
7	†74981	CLIP — throttle shaft	1	31	77318	TURRET — fuel inlet connection	1
8	†77041	SCREW — throttle clip, 6-32 x 3/16 pan hd.	1	32	77376	SCREEN — fuel inlet	1
9	A-77253	SHAFT — throttle	1	33	*77319	GASKET — inlet connection	1
10	74991	SHUTTER — choke	1	34	A-77322	SHAFT & LEVER — choke	1
11	†A-77326	PIN — fulcrum	1	35	†74977	PLUG — Welch (large)	1
12	†77381	CUP — restriction (main channel)	1	36	*77007	RING — square	2
13	77010	SPRING — idle speed screw	1	37	†77006	WASHER — adjustment packing	2
14	77040	SCREW — idle speed, 6-32 x 1/8 rd. hd.	1	38	†77005	SPRING — adjustment compression	2
15	†77015	SPRING — diaphragm lever tension	1	39	77004	CLIP — spring retaining	2
16	†77016	LEVER — diaphragm	1	40	†A-77328	SCREW — main adjusting, w/77004 clip	1
17	*77346	GASKET — copper	1	41	†A-77251	SCREW — idle adjusting, w/77004 clip	1
18	†A-77327	NEEDLE & SEAT — inlet w/gasket	1	42	†77042	SCREW — idle stop	1
19	77017	SPRING — choke friction	1	43	77247	LEVER — throttle stop	1
20	77018	PIN — choke friction	1	44	†77332	SPRING — throttle return	1
21	*77303	GASKET — main diaphragm	1	45	†77336	GASKET SET (BGS-152)	1
22	*A-7737C	DIAPHRAGM — main	1	46	77337	REPAIR PARTS KIT (BRK-155)	1

*Included in Gasket Set

†Included in Repair Parts Kit

NOTE: When installing replacement carburetor A-56505-A, remove friction spring (not shown) from throttle shaft and replace with throttle return spring #77332 (illustrated).

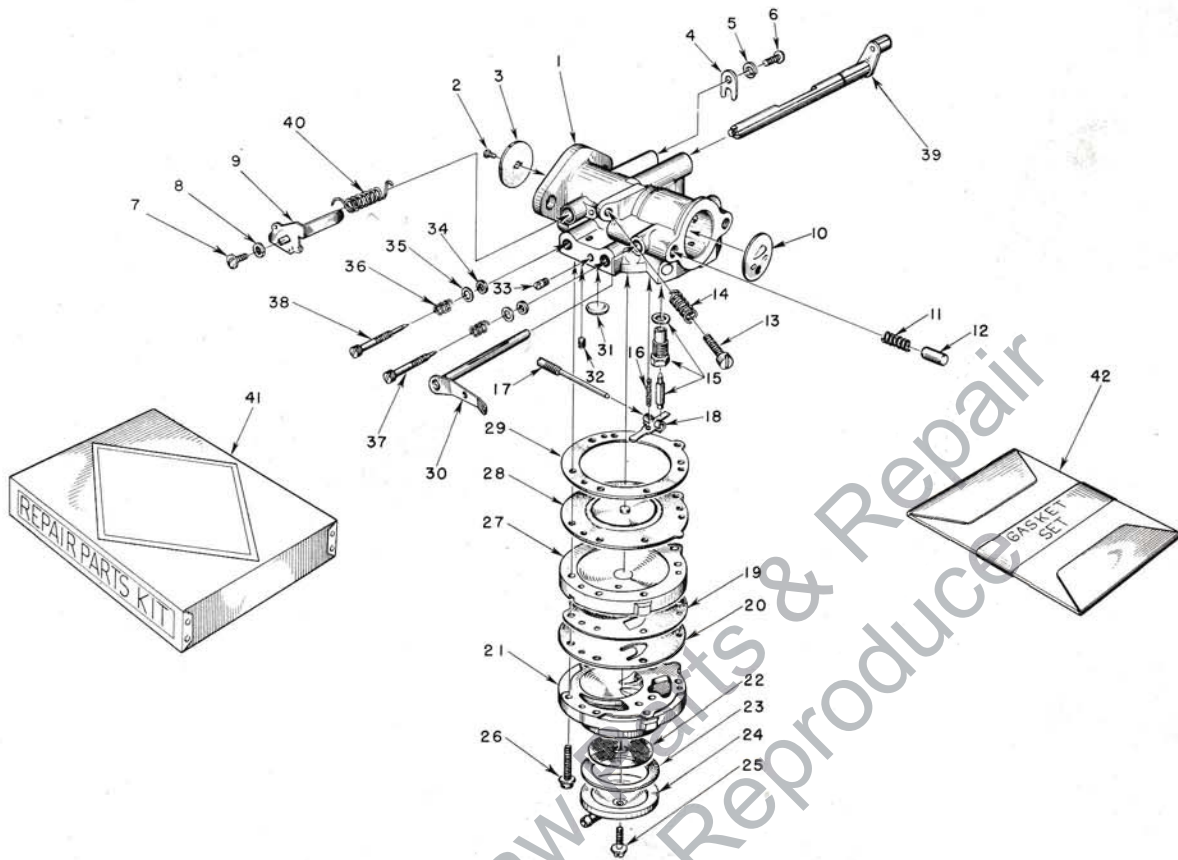


FIGURE 4 — TILLOTSON HL-46B CARBURETOR PARTS

DECEMBER 1959

Index No.	Part No.	Description	No. Required	Index No.	Part No.	Description	No. Required
1	A-56484	CARBURETOR—Till. Model HL-46B	1	20	†55753	DIAPHRAGM—fuel pump	1
		Includes		21	55748	BODY—fuel pump	1
2	*80012	SCREW—throttle shutter	1	22	55752	SCREEN—fuel strainer	1
3	75532	SHUTTER—throttle	1	23	†55751	GASKET—pump strainer	1
4	73086	CLIP—throttle shaft	1	24	55750	COVER—fuel pump	1
5	83000	WASHER—#8 lock	1	25	55756	SCREW—pump cover retaining	1
6	73088	SCREW—8-32 x 5/16 flat hd.	1	26	55316	SCREW—body, w/lockwasher	6
7	*71521	SCREW—4-36 x 1/4 rd. hd.	1	27	55749	COVER—main diaphragm	1
8	*71522	WASHER—#4 lock	1	28	†A-55760	DIAPHRAGM—main	1
9	77247-1	LEVER—throttle stop	1	29	†55754	GASKET—main diaphragm	1
10	75734	SHUTTER—choke	1	30	A-75740	LEVER—choke	1
11	73264	SPRING—choke friction	1	31	30818	PLUG—welch (idle chamber)	1
12	71494	PIN—choke friction	1	32	55763	PLUG—channel	1
13	*71509	SCREW—idle stop	1	33	73067	PLUG—drain	1
14	*28064	SPRING—idle stop screw	1	34	†75733	PACKING—adjustment screw	2
15	*A-55761	INLET NEEDLE AND SEAT	1	35	75735	WASHER—adjustment screw	2
		Includes		36	73075	SPRING—adjustment screw	2
	55344	GASKET—inlet seat	1	37	*75736	SCREW—idle adjustment (lo speed)	1
16	*55759	SPRING—control lever	1	38	*75739	SCREW—main adjustment (hi speed)	1
17	A-55762	PIN—inlet lever fulcrum	1	39	A-75766	SHAFT AND LEVER—throttle	1
18	*55747	LEVER—inlet control	1	40	75756	SPRING—throttle return	1
19	55881	GASKET—pump diaphragm	1	41	77343	REPAIR PARTS KIT (RK-378)	1
				42	77342	GASKET SET (GS-145)	1

*Included in Repair Parts Kit RK-378.

†Included in Gasket Set GS-145.

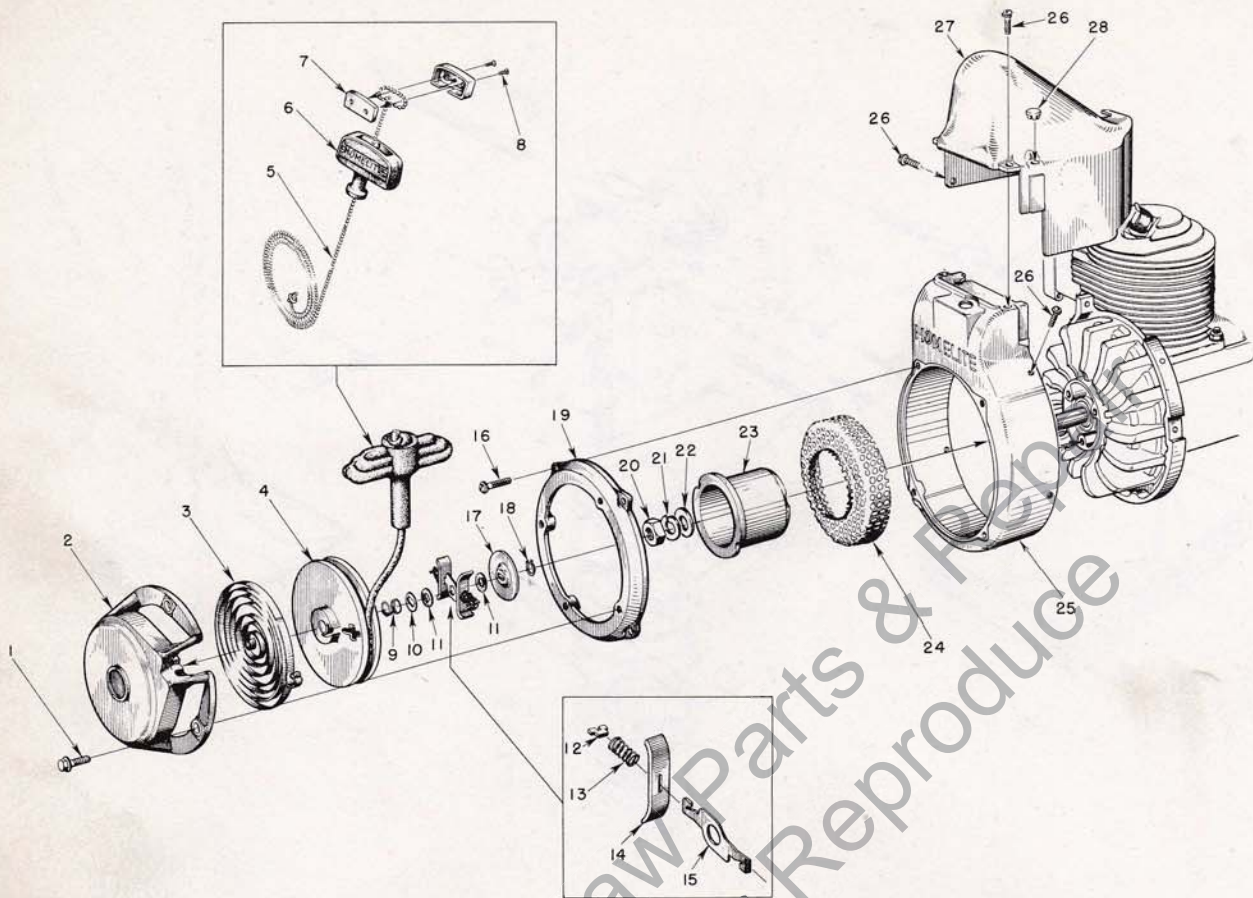


FIGURE 5 — STARTER PARTS

DECEMBER 1959

Index No.	Part No.	Description	No. Required
1	80681	SCREW — 1/2-20 x 1/2 hex hd.	4
2	56450-2	COVER — pulley	1
3	56451	SPRING — rewind	1
4	56452	PULLEY — starter	1
5	55898	ROPE — starting	1
6	55937	GRIP — starting	1
7	A-56081	INSERT — grip, w/screws Includes	1
8	80619	SCREW	2
9	56455	SPRING — brake	1
10	56456	WASHER — brake	1
11	56457	WASHER — fibre	2
12	56461	PLATE — spring retainer	2
13	56460	SPRING — friction shoe	2
14	56459	PLATE — friction shoe	2

Index No.	Part No.	Description	No. Required
15	56458	LEVER — brake	1
16	80576	SCREW — 10-32 x 1/16 pan hd.	4
17	56462	WASHER — brake retainer	1
18	56463	RING — retaining	1
19	56426	ADAPTER — starter	1
20	81110	NUT — 7/16-20 hex jam	1
21	83019	WASHER — 7/16 lock	1
22	84055	WASHER — 7/16 flat aluminum	1
23	56441	CUP — starter	1
24	56442	SCREEN — starter	1
25	A-55650	SHROUD — air	1
26	80560	SCREW — 8-32 x 1/2 pan hd.	7
27	55015-B	SHIELD — cylinder	1
28	32814	PLUG — button	1

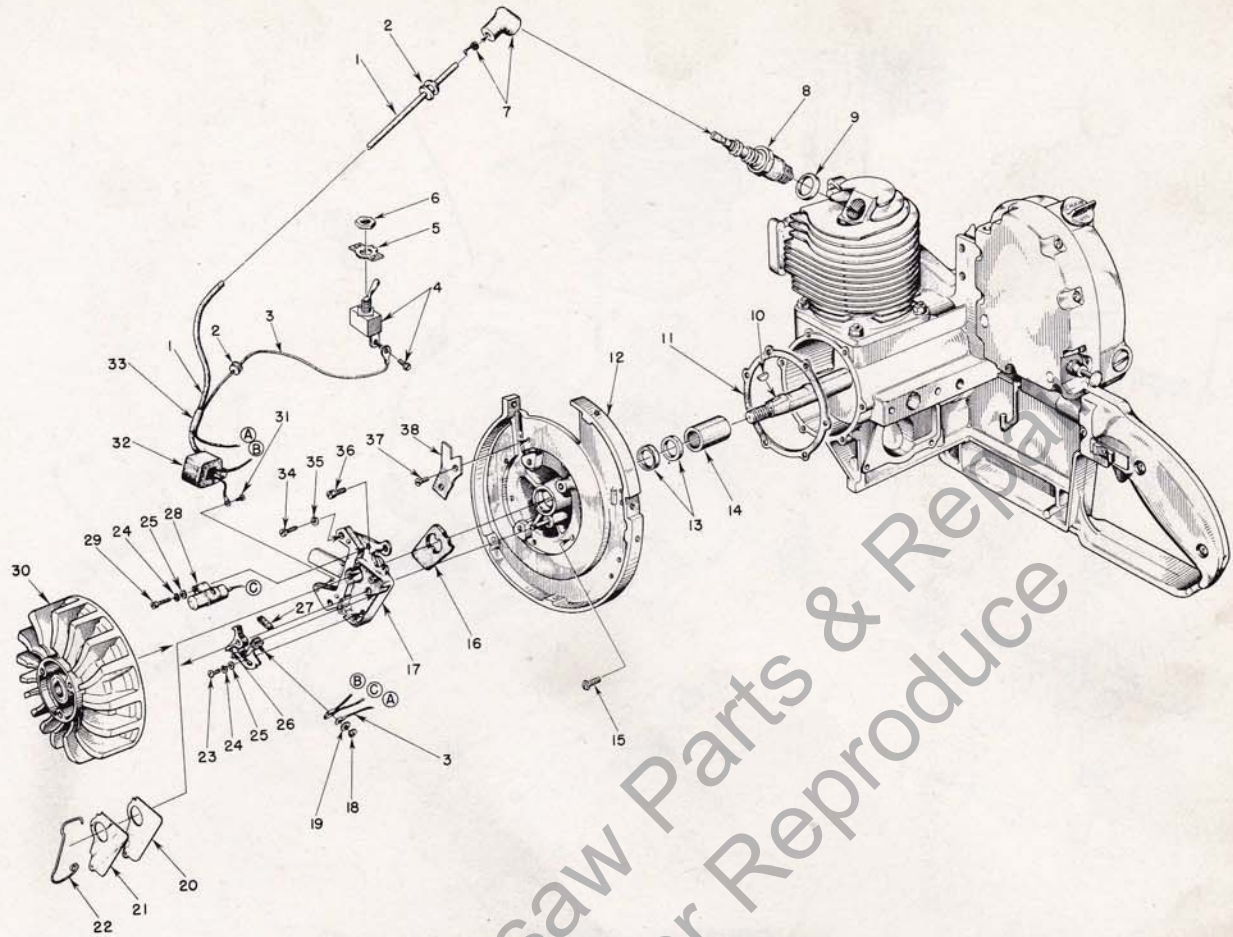


FIGURE 6 — IGNITION SYSTEM

DECEMBER 1959

Index No.	Part No.	Description	No. Required	Index No.	Part No.	Description	No. Required
1	56029	LEAD — high tension	1	18	55982	NUT — terminal	1
2	60929	GROMMET	2	19	55983	WASHER — terminal	1
3	56028	LEAD — ground	1	20	55978	GASKET — dust cover	1
4	A-55877	SWITCH — toggle, w/screw	1	21	55979	COVER — dust	1
		Includes		22	55980	CLAMP — dust cover	1
5	55879	PLATE — "on-off"	1	23	55985	SCREW — 8-32 x 3/8 fl. hd.	1
6	*	NUT — hex	1	24	83060	WASHER — lock	2
7	A-55373	TERMINAL — "Sparky" (cover and spring)	1	25	84048	WASHER — flat	2
8	40190-1	SPARK PLUG—J6J	1	26	A-55971	POINTS — (set)	1
	71530	SPARK PLUG—HO-8A (optional)	1	27	55984	WICK — felt	1
9	25038	GASKET (included with spark plug)	1	28	55987	CONDENSER (with terminal)	1
10	75078	KEY — rotor	1	29	55988	SCREW	1
11	55049	GASKET — back plate	1	30	56026	ROTOR	1
12	A-56080	BACK PLATE (with pivot post)	1	31	55977	SCREW — coil ground	1
		Includes		32	55986	COIL — (with ground terminal)	1
13	71597	SEAL — garlock	2	33	56027	SLEEVE — insulating	1
14	55204	BEARING — needle	1	34	80660	SCREW — 10-24 x 1/2 fl. hd.	2
15	80576	SCREW — 10-32 x 3/16, pan hd.	6	35	83046	WASHER — #10 Lock	3
16	55989	WASHER — sealing, felt	1	36	80595	SCREW — 10-24 x 1/2 fl. hd.	1
17	55969	BOX — breaker, w/core	1	37	80598	SCREW — 6-32 x 3/16 flat hd.	2
				38	55595-1	CLAMP — lead	1

*Not supplied separately.

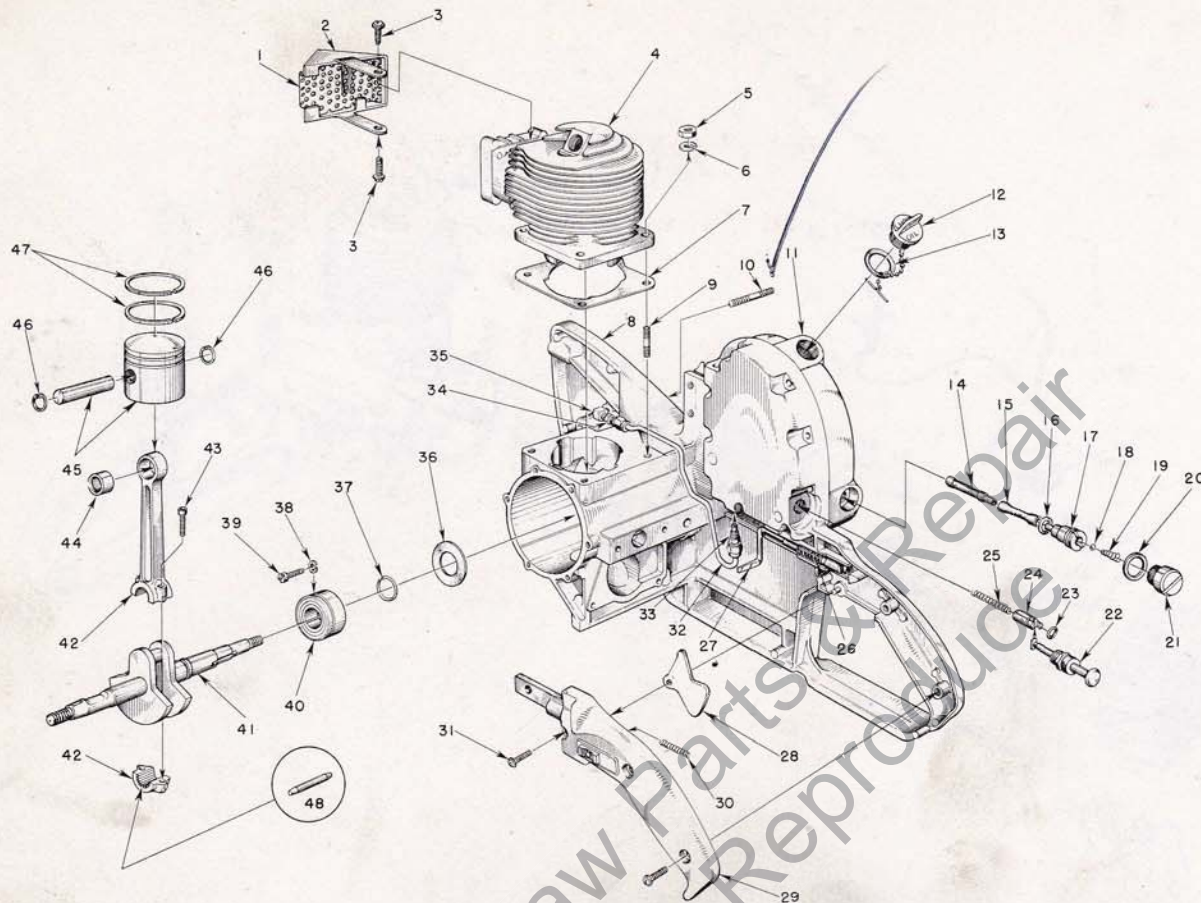


FIGURE 7 — ENGINE

DECEMBER 1959

Index No.	Part No.	Description	No. Required	Index No.	Part No.	Description	No. Required
1	*	ELEMENT (welded to cap)	1	26	55045-A	SPRING — throttle rod	1
2	A-56613	CAP — exhaust (includes element)	1	27	A-56449	ROD — throttle (includes 55045-A spring)	1
3	80625	SCREW — 10-32 x 1/2 pan hd.	2	28	AA-55207	TRIGGER — throttle	1
4	56403	CYLINDER	1	29	A-55631	COVER — grip	1
5	81065-2	NUT — 1/4-28 hex	4			Includes	
6	83009	WASHER — 1/4 lock	4		AA-55282	LOCK — throttle	1
7	55050-A	GASKET — cylinder	1			Includes	
8	A-56202	CRANKCASE w/throttle pivot pin	1	30	72970	SPRING — throttle lock	1
		Includes		31	80560	SCREW — 8-32 x 1/2 pan hd.	4
9	55871	STUD — cylinder	4	32	A-55625	LINE — chain oil	1
10	55623	STUD — guide bar	2	33	A-55824	VALVE — check	1
11	A-55621	COVER — oil reservoir	1	34	31733-1	ADAPTER — straight	1
	55833	GASKET — reservoir cover	1	35	31734	ELBOW — connector, 90°	1
	80622	SCREW — self tapping	9	36	55048-A	GASKET — crankcase sealing	1
12	AA-71655-1	CAP — oil	1	37	56109	RING — snap	1
13	72280	GASKET (included with oil cap)	1	38	83061	WASHER — lock, special thin	2
14	AA-55259-A	FINDER — oil	1	39	19238-A	SCREW — main bearing retaining	2
15	55133-A	SLEEVE — flexible oil	1	40	56097	BEARING — main	1
16	55110	GASKET	1	41	56423-A	CRANKSHAFT	1
17	55109-A	FITTING — check valve	1	42	AA-55195	CONNECTING ROD	1
18	25527	BALL (5/32 dia.)	1			Includes	
19	55288-A	SPRING	1	43	80541	SCREW — 8-32 x 1/2 Allen cap	2
20	55107	GASKET	1	44	55196	BEARING — piston pin	1
21	A-55628	CAP — supply line	1	45	AA-55279	PISTON and PIN	1
22	71764	BUTTON — plunger	1			Includes	
23	74388	"O" RING (included in A-74406)	1	46	55095	RING — piston pin retaining	2
24	A-74406	TUBE — plunger	1	47	55038	RING — piston	2
25	71762	SPRING	1	48	AA-55280	ROLLERS (set of 27)	1

*Not supplied separately.

HOMELITE

Authorized Sales and Service Branches

Homelite sales and service factory branches are located throughout the country. Field representatives and factory-trained servicemen are always available, ready and able to keep your Homelites running in top performance at all times. See the "Yellow Pages" for the address and phone number of your nearest Homelite Branch office.

Alabama Birmingham	Missouri Kansas City St. Louis	Texas Cleveland Dallas Houston Lufkin Silsbee
California Alhambra (Los Angeles area) Fresno Sacramento S. San Francisco	Nebraska Omaha	Utah North Salt Lake
Colorado Denver	New Jersey North Arlington Woodbridge	Virginia Arlington Richmond Roanoke
Connecticut Byram Hartford	New York Buffalo Latham (Albany area) Rochester Syracuse	Washington Seattle Spokane
Florida Jacksonville Miami	North Carolina Charlotte Raleigh	West Virginia Charleston Clarksburg
Georgia Atlanta	Ohio Cincinnati Cleveland Toledo	Wisconsin Milwaukee
Illinois Bloomington Springfield Stone Park (Chicago area)	Oklahoma Oklahoma City	DOMINION OF CANADA TERRY MACHINERY CO., LTD.
Indiana Indianapolis	Oregon Portland	Quebec Montreal Quebec City
Louisiana Bossier City Metairie	Pennsylvania Alloua Erie Harrisburg Hazleton Malvern Philadelphia Pittsburgh	Alberta Edmonton
Maine Orono	Tennessee Knoxville Memphis	British Columbia Vancouver
Maryland Baltimore		New Brunswick Moncton
Massachusetts Allston (Boston area)		Ontario Ottawa Toronto
Michigan Detroit Grand Rapids Saginaw		
Minnesota St. Paul		

**You'll
SPEED WORK
and make
MORE MONEY
with...**



HOMELITE
SELF-PRIMING PUMPS



HOMELITE
DEPENDABLE GENERATORS



HOMELITE
POWERFUL ONE-MAN CHAIN SAWS



HOMELITE
ONE-MAN CONCRETE VIBRATORS



HOMELITE — BOSCH (Germany)
ELECTRIC BUILDER'S HAMMERS

All Powered By Famous HOMELITE Engines

Homelite's two-cycle gasoline engines are the most efficient and dependable units of their kind ever built. Their two-cycle design, developed to perfection by Homelite engineers over the past 35 years, gives maximum power for the least weight because power is produced at every piston down stroke. As an added advantage, this design requires fewer moving parts which means greater dependability and lower maintenance

HOMELITE

a division of Textron Inc.
PORT CHESTER, N. Y.