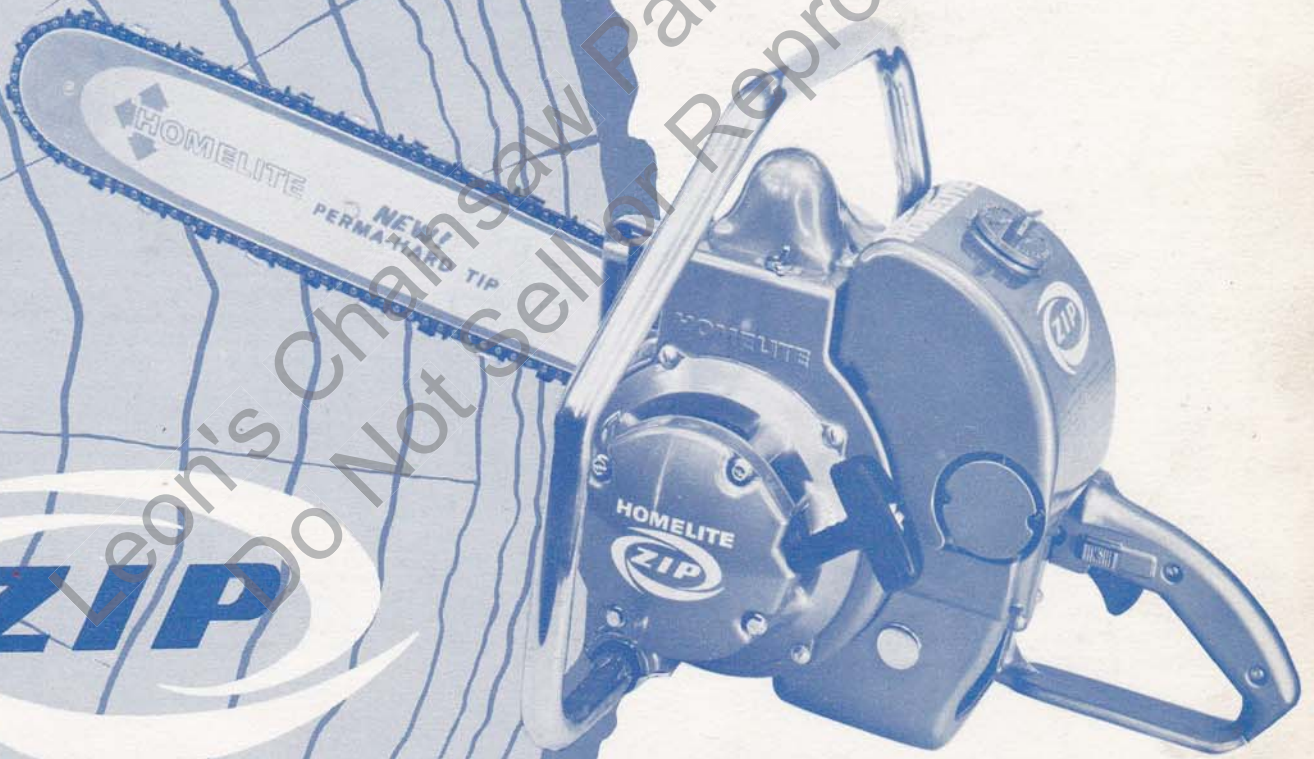


HOMELITE CHAIN SAW



PARTS LIST

(Identified by "B" preceding serial number)

HOMELITE CHAIN SAW

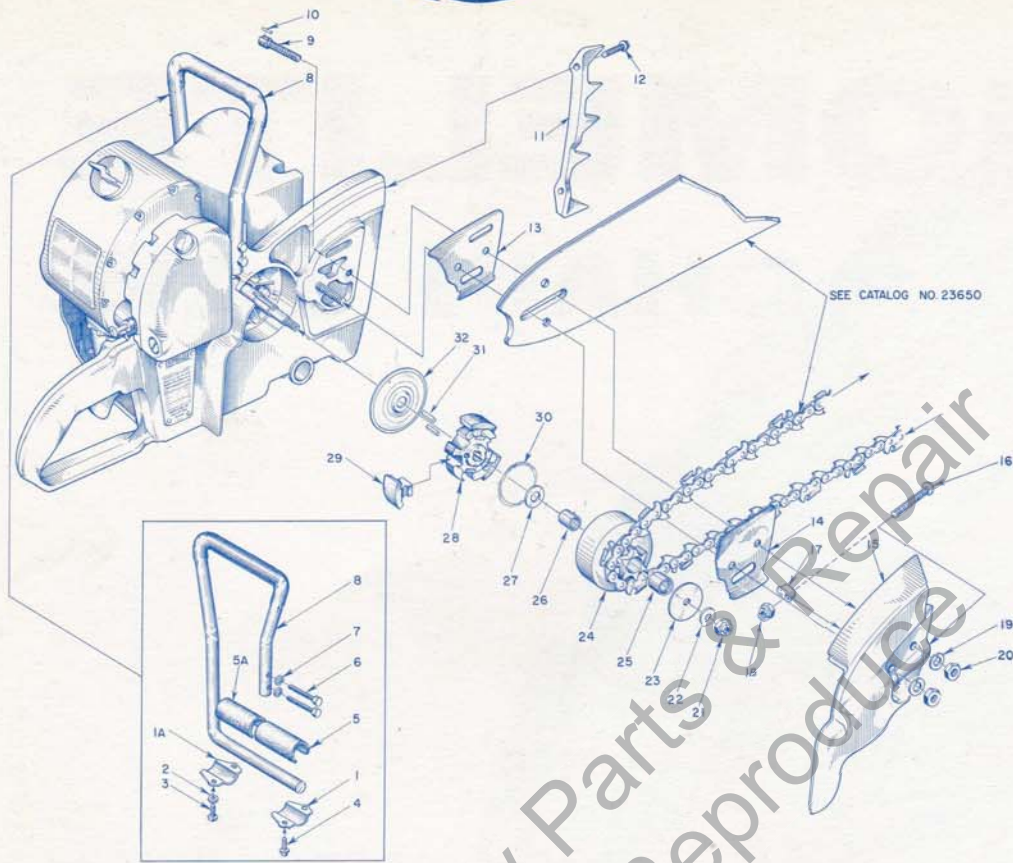


FIGURE 1 — SAW PARTS

Index No.	Part No.	Description	No. Required	Index No.	Part No.	Description	No. Required
1	55614	CLAMP — handle bar	1	16	80617	SCREW — $\frac{5}{16}$ -18 x 2 rd. hd.	1
1A	56282-A	CLAMP — handle bar	1	17	55613	PIN — guide bar adjusting	1
2	83056	WASHER — lock #12	1	18	81123	NUT — $\frac{5}{16}$ hex lock	1
3	80289	SCREW — 12-24 x $\frac{5}{16}$ rd. hd.	2	19	83018	WASHER — $\frac{3}{8}$, lock	2
4	80581	SCREW — $\frac{1}{4}$ -20 x $\frac{5}{8}$	2	20	81089-2	NUT — $\frac{3}{8}$ -16 hex	2
5	55685	CUSHION — handle bar	1	21	81116	NUT — $\frac{3}{8}$ -24 flex-lock	1
5A	56281	CUSHION — handle bar	1	22	84010	WASHER — $\frac{3}{8}$, flat	1
6	80087	SCREW — $\frac{5}{16}$ -18 x $1\frac{1}{2}$ hex hd.	2	23	55163-1	WASHER — thrust	1
7	83003	WASHER — $\frac{5}{16}$ lock	2	24	*A-57344	SPROCKET & DRUM — std., 7 tooth (.404 pitch chain)	1
8	A-58287	HANDLE	1			Includes	
9	57175	BOLT — guide bar	2	25	55664	BEARING — needle	1
10	41738	PIN — guide bar bolt	2	26	55661	RACE — inner	1
11	†55632	PLATE — spiked bumper	1	27	55660-1	WASHER — thrust	1
12	80573	SCREW — $\frac{1}{4}$ -20 x $1\frac{1}{8}$ hex hd.	2	28	55075-3A	SPIDER — clutch	1
13	56871	PLATE — guide bar, inner	1	29	55076-1A	SHOE — clutch	3
14	56872-A	PLATE — guide bar, outer	1	30	55123-C	SPRING — clutch	2
15	A-55668	COVER — drive case	1	31	55225-1A	KEY — clutch	2
		Includes		32	56101-A	COVER — clutch	1

*Optional

A-56019 SPROCKET AND DRUM — 6 tooth
($\frac{1}{2}$ " pitch chain)
Includes
55664 BEARING — needle

A-56377 SPROCKET AND DRUM — 7 tooth
($\frac{3}{16}$ " pitch chain)
Includes
55664 BEARING — needle

*Check type and number of teeth on sprocket before ordering.
†Accessory — Available on order.

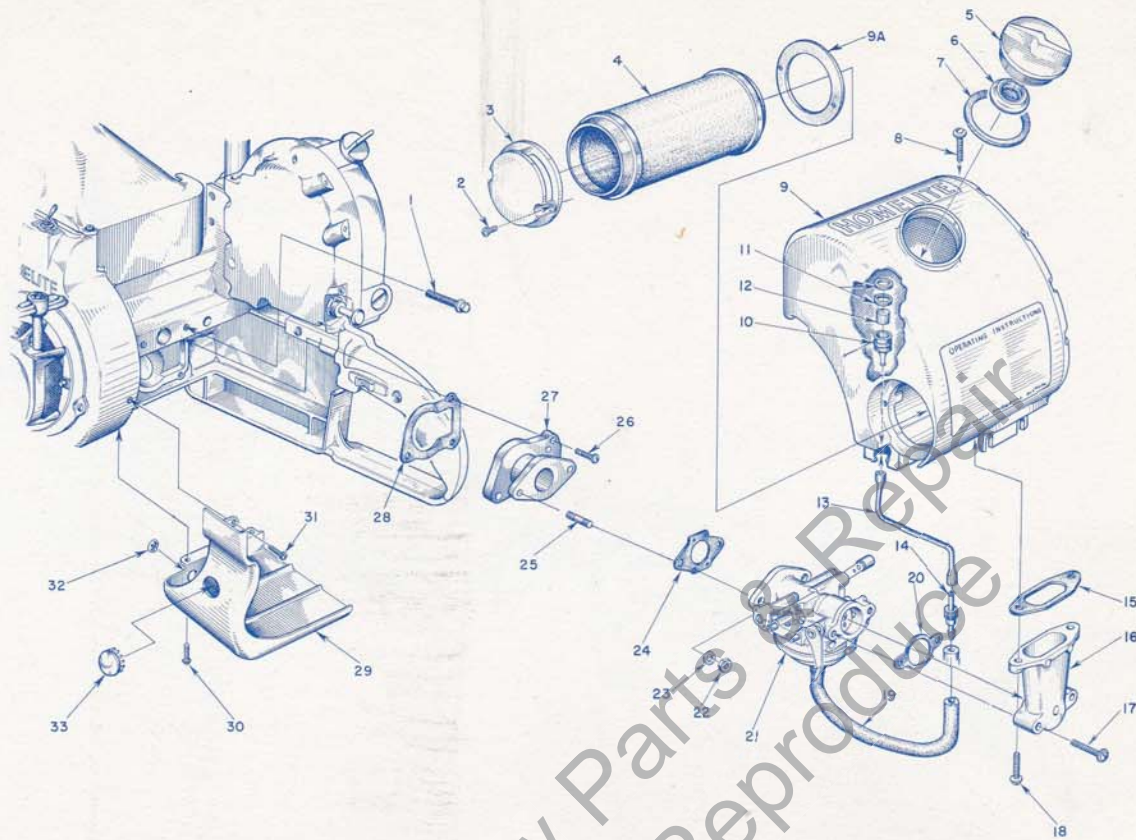


FIGURE 2 — FUEL SYSTEM

Index No.	Part No.	Description	No. Required	Index No.	Part No.	Description	No. Required
1	80581	SCREW — 1/4-20 x 5/8 hex hd.	2	16	55019-3	ADAPTER — air cleaner	1
2	80630	SCREW — 6-32 x 1/2 pan hd.	2	17	80624	SCREW — 10-32 x 1 pan hd.	2
3	55494	CAP — air filter	1	18	80572	SCREW — 10-32 x 5/8 pan hd.	2
4	57337-A	AIR FILTER	1	19	57763	LINE — fuel	1
5	A-56907	CAP — fuel	1	20	72971-1	GASKET — air elbow	1
		Includes		21	*A-57440	CARBURETOR — Til. HL-104A	1
6	56865	VALVE — relief	1	†77343	REPAIR PARTS KIT — RK-378	1	
7	56335	GASKET	1	†57919	GASKET SET — GS-155	1	
8	80572	SCREW — 10-32 x 5/8 pan hd.	1	22	81013	NUT — 1/4-20 hex	2
9	A-57781	FUEL TANK	1	23	83009	WASHER — 1/4 lock	2
9A	57041	GASKET — cement to tank	1	24	55553	GASKET — carburetor	1
	56598-A	DECAL (Instructions)	1	25	27464	STUD — (part of A-55679-A1)	2
	56400	DECAL (Homelite)	1	26	80583	SCREW — 10-32 x 3/4 pan hd.	3
10	A-56200	STRAINER — outlet, w/brass nail	1	27	A-55679-A1	ADAPTER — reed valve	1
		Includes		28	55116	GASKET — reed valve adapter	1
11	56196	BUMPER — rubber	2	29	55512-3	SHIELD — carburetor	1
12	74374	FILTER — felt	1	30	80576	SCREW — 10-32 x 5/16 pan hd.	2
13	55805	SLEEVE — flexible	1	31	80560	SCREW — 8-32 x 1/2 pan hd.	1
14	57652	FITTING — fuel line connection	1	32	55681	PLUG — button	1
15	55059	GASKET — adapter	1	33	29187	PLUG — button	1

*Replacement Carburetor
 58191 REPAIR PARTS KIT (RK-527)
 55836 GASKET SET (GS-122)

†For Original Carburetor (HL-46B)

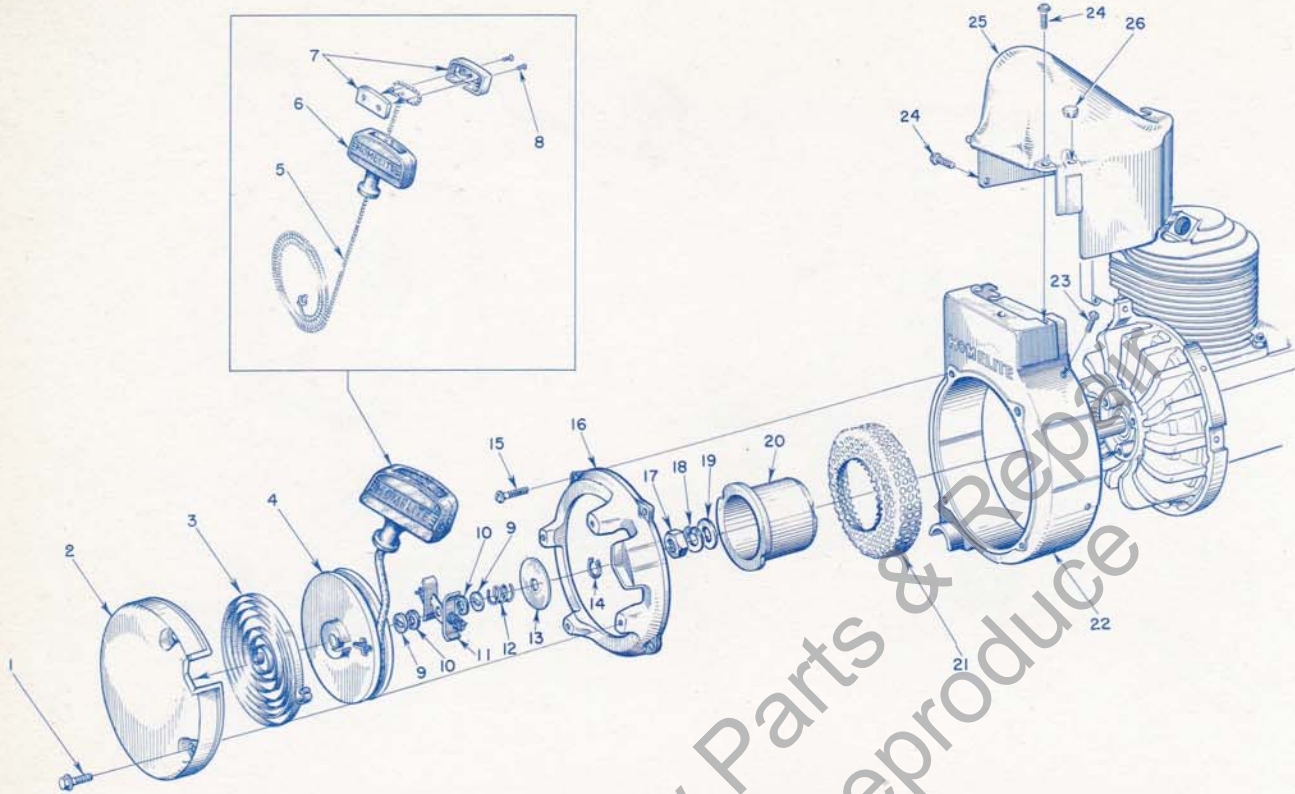


FIGURE 3 — STARTER PARTS

Index No.	Part No.	Description	No. Required	Index No.	Part No.	Description	No. Required
1	80864	SCREW — 12-24 x 1 hex hd	4	13	76436	WASHER — brake retainer	1
2	58281	COVER — pulley	1	14	90618	RING — retaining	1
	56752	DECAL — "Homelite"	1	15	80576	SCREW — 10-32 x 3/16 pan hd.	4
3	56451	SPRING — rewind	1	16	58279	ADAPTER — starter	1
4	56452	PULLEY — starter	1	17	81110	NUT — 7/16-20 hex jam	1
5	55898	ROPE — starting	1	18	83019	WASHER — 7/16 lock	1
6	55937	GRIP — starting	1	19	84055	WASHER — 7/16 flat aluminum	1
7	A-56081	INSERT — grip, w/screws	1	20	56441	CUP — starter	1
		Includes		21	56442	SCREEN — starter	1
8	80619	SCREW	2	22	A-57648-1	SHROUD — air	1
9	56456	WASHER — brake	2	23	80577	SCREW — 8-32 x 3/8 pan hd.	4
10	56457	WASHER — fibre	2	24	80560	SCREW — 8-32 x 1/2 pan hd.	3
11	A-57647	FRICITION SHOE ASSEMBLY	1	25	55015-3	SHIELD — cylinder	1
12	56455	SPRING — brake	1	26	32814	PLUG — button	1

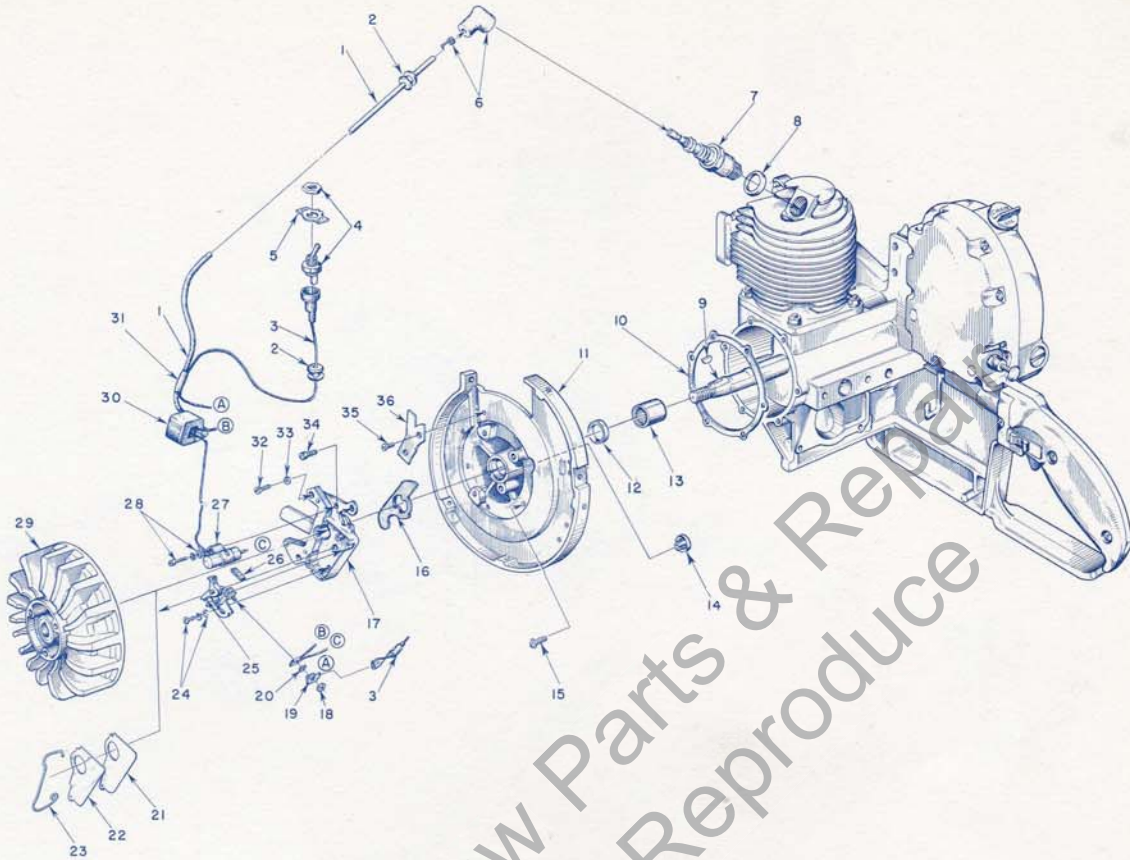


FIGURE 4 — IGNITION SYSTEM

Index No.	Part No.	Description	No. Required	Index No.	Part No.	Description	No. Required
1	55235-A	LEAD — high tension	1	18	55982	NUT — terminal	1
2	60929	GROMMET	2	19	57733	TAB — ground	1
3	A-57740	LEAD — ground	1	20	55983	WASHER — terminal	1
4	A-57716	SWITCH — toggle	1	21	55978-2	GASKET — dust cover	1
5	55879	PLATE — "on-off"	1	22	55979	COVER — dust	1
6	A-55373	TERMINAL — "sparky" (cover and spring)	1	23	55980	CLAMP — dust cover	1
7	40190-S	SPARK PLUG — J6J	1	24	57749	SCREW GROUP — point fastening	1
8	71530-S	SPARK PLUG — HO-8A (optional)	1	25	A-58165	POINTS — (set)	1
9	25038	GASKET (included with spark plug)	1			Includes	
10	75078	KEY — rotor	1	26	55984	WICK — felt	1
11	55049	GASKET — back plate	1	27	55987	CONDENSER (with terminal)	1
	A-57715	BACK PLATE	1	28	57750	SCREW GROUP — condenser fastening	1
		Includes		29	57568	ROTOR	1
12	56134	SEAL — garlock	1	30	55986	COIL (with ground terminal)	1
13	57533	BEARING — needle	1	31	56027	SLEEVE — insulating	1
14	32814	PLUG — button	1	32	80660	SCREW — 10-24 x 1/2 fl. hd.	2
15	80576	SCREW — 10-32 x 1/16, pan hd.	6	33	83046	WASHER — #10 lock	3
16	56292-A	WASHER — sealing, felt	1	34	80595	SCREW — 10-24 x 1/2 fl. hd.	1
17	57744	BOX — breaker, w/core	1	35	80598	SCREW — 6-32 x 1/16 flat hd.	2
				36	55595-1	CLAMP — lead	1

HOMELITE CHAIN SAW

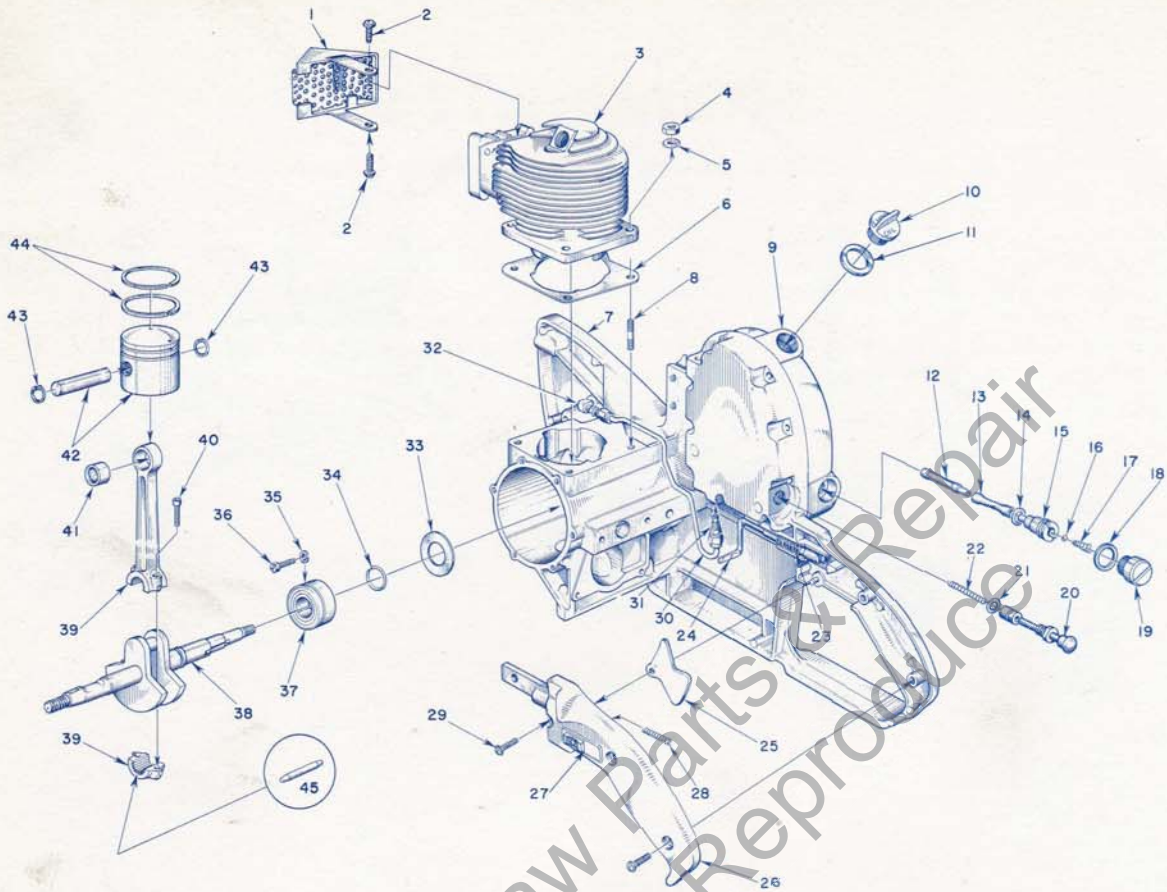


FIGURE 5 — ENGINE

Index No.	Part No.	Description	No. Required	Index No.	Part No.	Description	No. Required
1	A-56613-A	CAP — exhaust (includes element)	1	23	55045-A	SPRING — throttle rod	1
2	80625	SCREW — 10-32 x 1/2 pan hd.	2	24	A-56449	ROD — throttle (includes 55045-A spring)	1
3	56403	CYLINDER	1	25	AA-55207	TRIGGER — throttle	1
4	81065-2	NUT — 1/4-28 hex	4	26	A-55631	COVER — grip	1
5	83009	WASHER — 1/4 lock	4	27	AA-55282	LOCK — throttle	1
6	56864	GASKET — cylinder	1			Includes	
7	A-57640-A	CRANKCASE w/throttle pivot pin	1			LOCK — throttle	1
		Includes				Includes	
8	55871	STUD — cylinder	4	28	72970	SPRING — throttle lock	1
	57175	BOLT — see Fig. 1	2	29	80560	SCREW — 8-32 x 1/2 pan hd.	4
	41738	PIN — see Fig. 1	2	30	A-55625	LINE — chain oil	1
9	A-55621-A	COVER — oil reservoir	1	31	A-55824	VALVE — check	1
	55833	GASKET — reservoir cover	1	32	56707	ELBOW — connector, 90°	1
	80622	SCREW — self tapping	9	33	55048-A	GASKET — crankcase sealing	1
10	A-56580	CAP — oil	1	34	56109	RING — snap	1
11	56607	GASKET (included with oil cap)	1	35	83061	WASHER — lock, special thin	2
12	AA-55259-A	FINDER — oil	1	36	19238-A	SCREW — main bearing retaining	2
13	55133-A	SLEEVE — flexible oil	1	37	56097-S	BEARING — main	1
14	55110	GASKET	1	38	57550	CRANKSHAFT	1
15	55109-A	FITTING — check valve	1	39	AA-55195-A	CONNECTING ROD	1
16	25527	BALL (3/32 dia.)	1			Includes	
17	55288-A	SPRING	1	40	80805	SCREW — 8-32 x 1/16 Allen cap	2
18	55107	GASKET	1	41	55196	BEARING — piston pin	1
19	A-55628	CAP — supply line	1	42	AA-55279	PISTON and PIN	1
20	A-57834	OIL PUMP PLUNGER	1			Includes	
		Includes		43	55095	RING — piston pin retaining	2
21	74388	"O" RING	1	44	55038	RING — piston	2
22	71762	SPRING	1	45	AA-55280	ROLLERS (set of 27)	1

A-55900 Heat Damper Kit — Available on order

HOMELITE

Authorized Sales and Service Branches

Homelite sales and service factory branches are located throughout the country. Field representatives and factory-trained servicemen are always available, ready and able to keep your Homelites running in top performance at all times. See the "Yellow Pages", in the telephone directory, for the address and phone number of your nearest Homelite Branch office.

California Alhambra (Los Angeles area) Fresno Sacramento S. San Francisco	Missouri Kansas City St. Louis	Texas Dallas Lufkin
Colorado Denver	Nebraska Omaha	Utah North Salt Lake
Connecticut Byram Hartford	New Jersey North Arlington Woodbridge	Virginia Alexandria
Florida Jacksonville Miami	New York Buffalo Latham (Albany area) Rochester Syracuse	Washington Seattle Spokane
Georgia Atlanta	North Carolina Charlotte Raleigh	West Virginia Charleston Clarksburg
Illinois Stone Park (Chicago area)	Ohio Cincinnati Cleveland Toledo	Wisconsin Milwaukee
Indiana Indianapolis	Oklahoma Oklahoma City	DOMINION OF CANADA TERRY MACHINERY CO., LTD.
Louisiana Bossier City Metairie	Oregon Portland	Quebec Montreal Quebec City
Maine Orono	Pennsylvania Altoona Erie Harrisburg Malvern Philadelphia Pittsburgh	Alberta Edmonton
Maryland Baltimore	Tennessee Knoxville Memphis	British Columbia Vancouver Prince George
Massachusetts Allston (Boston area)		New Brunswick Moncton
Michigan Detroit Grand Rapids		Ontario Ottawa Toronto Port Arthur
Minnesota St. Paul		

*SPECIAL TOOLS

Part No.	Description	Part No.	Description
AA-22560	MAGNETO ROTOR PULLER	22828	PLIERS
22812-1	PLATE — shaft aligning	23136	BODY ASSEMBLY FIXTURE
23528	WRENCH — Allen (conn. rod)	A-23137	JACK SCREW ASSEMBLY
23233	ASSEMBLY PLUG — back plate seal	23138-1	ADAPTER — bearing assembly
23391-1	ASSEMBLY TOOL — back plate bearing	23139	ASSEMBLY TOOL — clutch drum bearing
A-23131	CLUTCH SPIDER PULLER	23318	SPRAY CAN — blue
23234	NEEDLE BEARING TOOL		

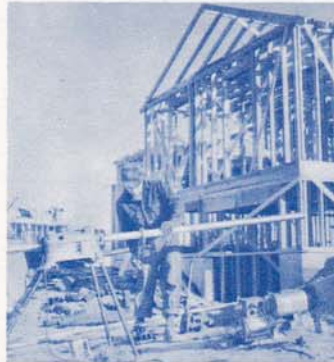
*When ordered only

Combination Wrench #22808 supplied with saw

**You'll
SPEED WORK
and make
MORE MONEY
with...**



HOMELITE
SELF-PRIMING PUMPS



HOMELITE
DEPENDABLE GENERATORS



HOMELITE
POWERFUL ONE-MAN CHAIN SAWS



HOMELITE
ONE-MAN CONCRETE VIBRATORS



HOMELITE — BOSCH (Germany)
ELECTRIC BUILDER'S HAMMERS

All Powered By Famous HOMELITE Engines

Homelite's two-cycle gasoline engines are the most efficient and dependable units of their kind ever built. Their two-cycle design, developed to perfection by Homelite engineers over the past 35 years, gives maximum power for the least weight because power is produced at every piston down stroke. As an added advantage, this design requires fewer moving parts which means greater dependability and lower maintenance



Printed in United States of America
Part No. 23311-B

10M-8-62

HOMELITE

A **textron** DIVISION

PORT CHESTER, N. Y.

Illustrated in **TEST SPECTIVE** and
published by PURNELL COMPANY, INC.
Boston, Mass.