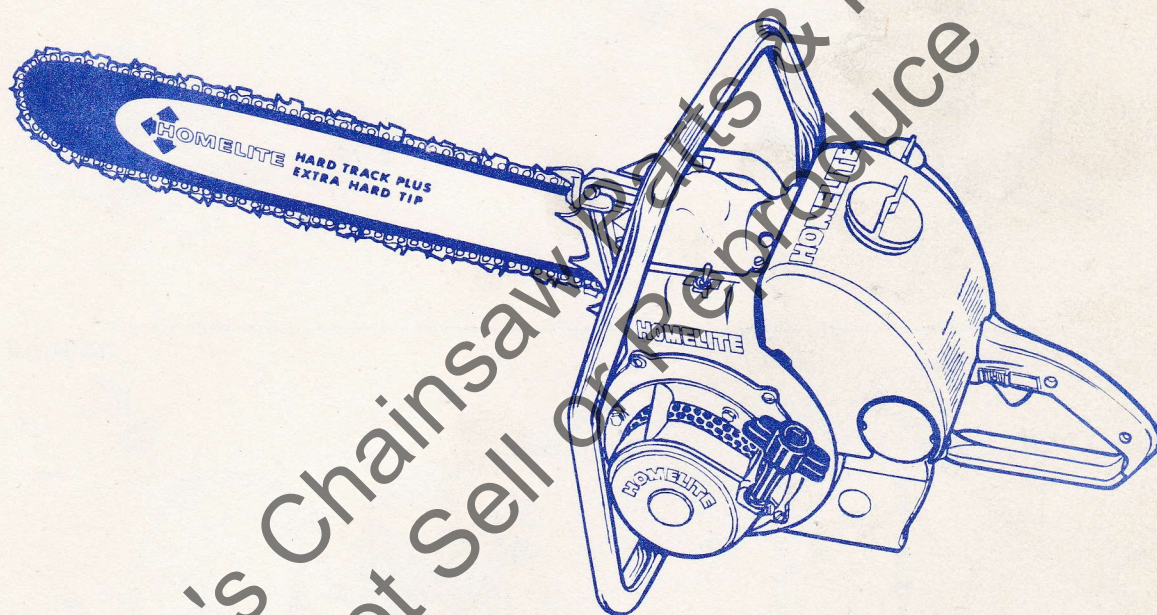


HOMELITE

CHAIN SAW

PARTS LIST



MODEL IDENTIFICATION

ZIP	From S/N 822143
ZIP-A	From S/N A-1198561
ZIP-B	From S/N B-1316558
600-D	From S/N 1046579
600-D1	From S/N 1197352
600D-A	From S/N A-1200301
(600-D1)	





Circled asterisk * denotes a part that may require adaptation for use in some saws; see notes.

Blue circled numerals (1) refer to note numbers on page 6.

Table with columns: No., Description, Part No., 600D, 600D-A(1), ZIP 1938, ZIP 1939, ZIP-A, ZIP-B, Qty. Rows 1-39.

Table with columns: No., Description, Part No., 600D, 600D-A(1), ZIP 1938, ZIP 1939, ZIP-A, ZIP-B, Qty. Rows 40-72.

TOOLS

Table with columns: Description, Part No. Rows: COMBINATION WRENCH, PLIERS - snap ring, REMOVER - rotor, etc.

Table with columns: Description, Part No. Rows: JACK SCREW, ADAPTER - bearing assembly, PLUG - clutch drum, etc.

PAINT

Table with columns: Description, Part No. Rows: SPRAY CAN - blue, SPRAY CAN - red, SPRAY CAN - green.

DECALS

Replacement DECAL #23742, composed of "DIRECT DRIVE", "GEAR DRIVE", "STARTING INSTRUCTIONS", and "HOMELITE" in letters 1/2" and 1/4" high.



Circled asterisk * denotes a part that may require adaptation for use in some saws; see notes.

Blue circled numerals (1) refer to note numbers on page 6.

No.	Description	Part No.	600D	600D(AD)	ZIP 1938	ZIP 1939	ZIP-A	ZIP-B	Qty.
1	SCREW-pan hd., 10-32 x 1/2	80625	*	*	*	*	*	*	2
2	ELEMENT & CAP-exhaust element only	A-56613-A A-56068-A	*	*	*	*	*	*	1
3	CAP - exhaust	56396	*	*	*	*	*	*	1
4	RING - piston	55038 55537	*	*	*	*	*	*	2
5	PISTON & PIN	A-55279 A-55599	*	*	*	*	*	*	1
6	Includes:RING-retainer	55095	*	*	*	*	*	*	2
7	CONNECTING ROD	(1) AA-55195-B	*	*	*	*	*	*	1
8	Includes:BEARING	59351	*	*	*	*	*	*	1
9	SCREW, 8-32 x 3/16	(1) 80805	*	*	*	*	*	*	2
10	ROLLERS (set of 27)	AA-55280	*	*	*	*	*	*	1
11	CRANKSHAFT	57550 56423-A	*	*	*	*	*	*	1
12	BEARING - main	56097-S	*	*	*	*	*	*	1
13	RING - snap	56109	*	*	*	*	*	*	1
14	GASKET - crankcase seal	55048-A	*	*	*	*	*	*	1
15	SCREW-bearing retainer	19238-A	*	*	*	*	*	*	2
16	WASHER - lock (thin)	83061	*	*	*	*	*	*	2
17	CRANKCASE-w/pivot pin (service replacement)	(1) A-57640-B	*	*	*	*	*	*	1
18	Includes:BOLT-guide bar	(1) 57175	*	*	*	*	*	*	2
18a	STUD - guide bar	(1) 55623	*	*	*	*	*	*	2
19	PIN - bolt	(1) 41738	*	*	*	*	*	*	2
20	STUD - cylinder & tank tank (only)	(1) 55871 (1) 57713	*	*	*	*	*	*	5
21	COVER - oil reservoir	(9) A-55621-A	*	*	*	*	*	*	1
	GASKET - cover	55833	*	*	*	*	*	*	1
	SCREW - self tap	80622	*	*	*	*	*	*	2
22	OIL LINE	A-55625	*	*	*	*	*	*	1
23	ELBOW - 90°	56707	*	*	*	*	*	*	1
24	GASKET - cylinder	(12) 56864	*	*	*	*	*	*	1
25	CYLINDER	56403	*	*	*	*	*	*	1
25a		56182-A	*	*	*	*	*	*	1
26	NUT - hex 1/4-28	81065-2	*	*	*	*	*	*	2
27	WASHER - lock 1/4	83009	*	*	*	*	*	*	6
28	SCREW-pan hd., 6-32 x 1/2	(13) 80630	*	*	*	*	*	*	2
29	CAP - air filter	55494	*	*	*	*	*	*	1
30	AIR FILTER	(15) 57337-A	*	*	*	*	*	*	1
31	CAP - fuel tank	(13) A-56907	*	*	*	*	*	*	1
32	Includes: GASKET	(15) 56335	*	*	*	*	*	*	1
33	VALVE	(13) 56365	*	*	*	*	*	*	1
34	NUT-flex loc, 1/4 - 28	(11) 81114 (11) 81105	*	*	*	*	*	*	1
34a	SCREW-pan hd., 10 - 32 x 1/2	(11) 80572	*	*	*	*	*	*	1
35	WASHER - flat	(11) 84019	*	*	*	*	*	*	1
36	FUEL TANK(replacement)	(13) A-57781-A	*	*	*	*	*	*	1
37	STRAINER-fuel pick-up	(16) A-5925	*	*	*	*	*	*	1
38	Includes:ELEMENT- felt	(13) 59253	*	*	*	*	*	*	1
40	GASKET (cement to tank)	(13) 57041	*	*	*	*	*	*	1
41	FITTING - outlet	(13) 55572-A	*	*	*	*	*	*	1
42	GASKET - outlet fitting	55676	*	*	*	*	*	*	1
43	SLEEVE - flexible	55805	*	*	*	*	*	*	1
44	FITTING - fuel, straight	(15) 57652	*	*	*	*	*	*	1
44a	elbow	(15) 74917	*	*	*	*	*	*	1
45	GASKET - adapter	55059	*	*	*	*	*	*	1
46	ADAPTER - air filter	55019-3	*	*	*	*	*	*	1
47	SCREW-pan hd., 10-32 x 1	80624	*	*	*	*	*	*	2
48	SCREW-pan hd., 10-32 x 3/8	80572	*	*	*	*	*	*	2
49	FUEL LINE-max. length 4 3/4	57763	*	*	*	*	*	*	1
	" " 5 1/4	55680	*	*	*	*	*	*	1

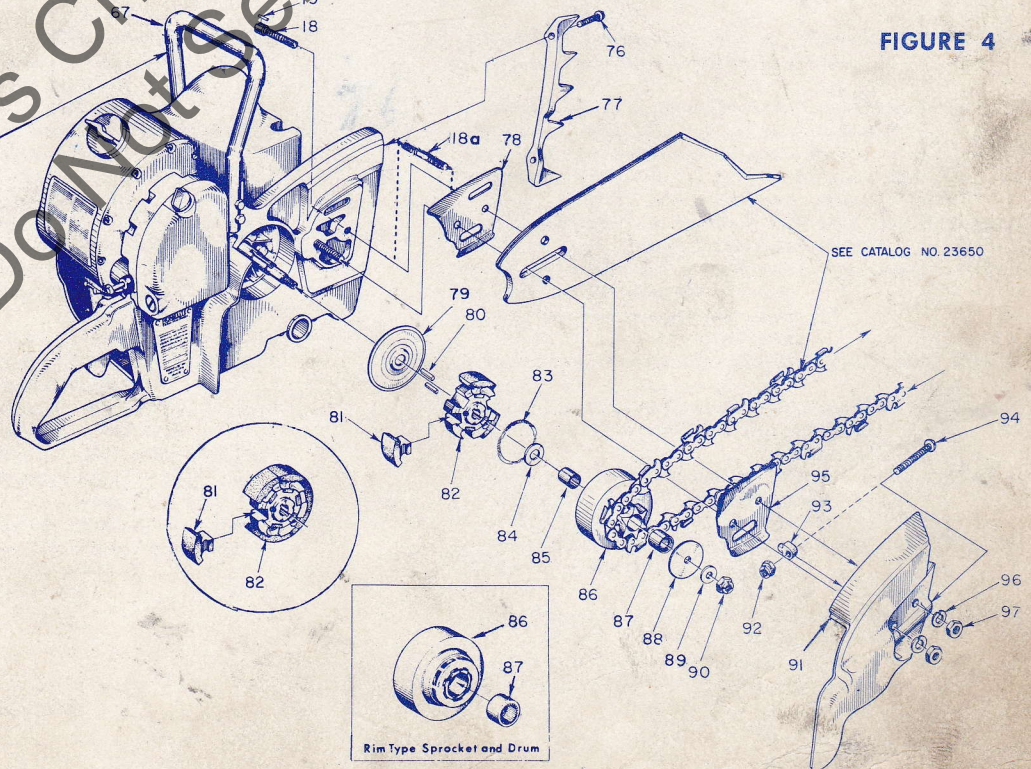
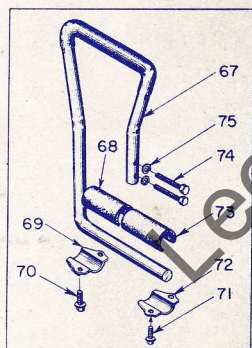
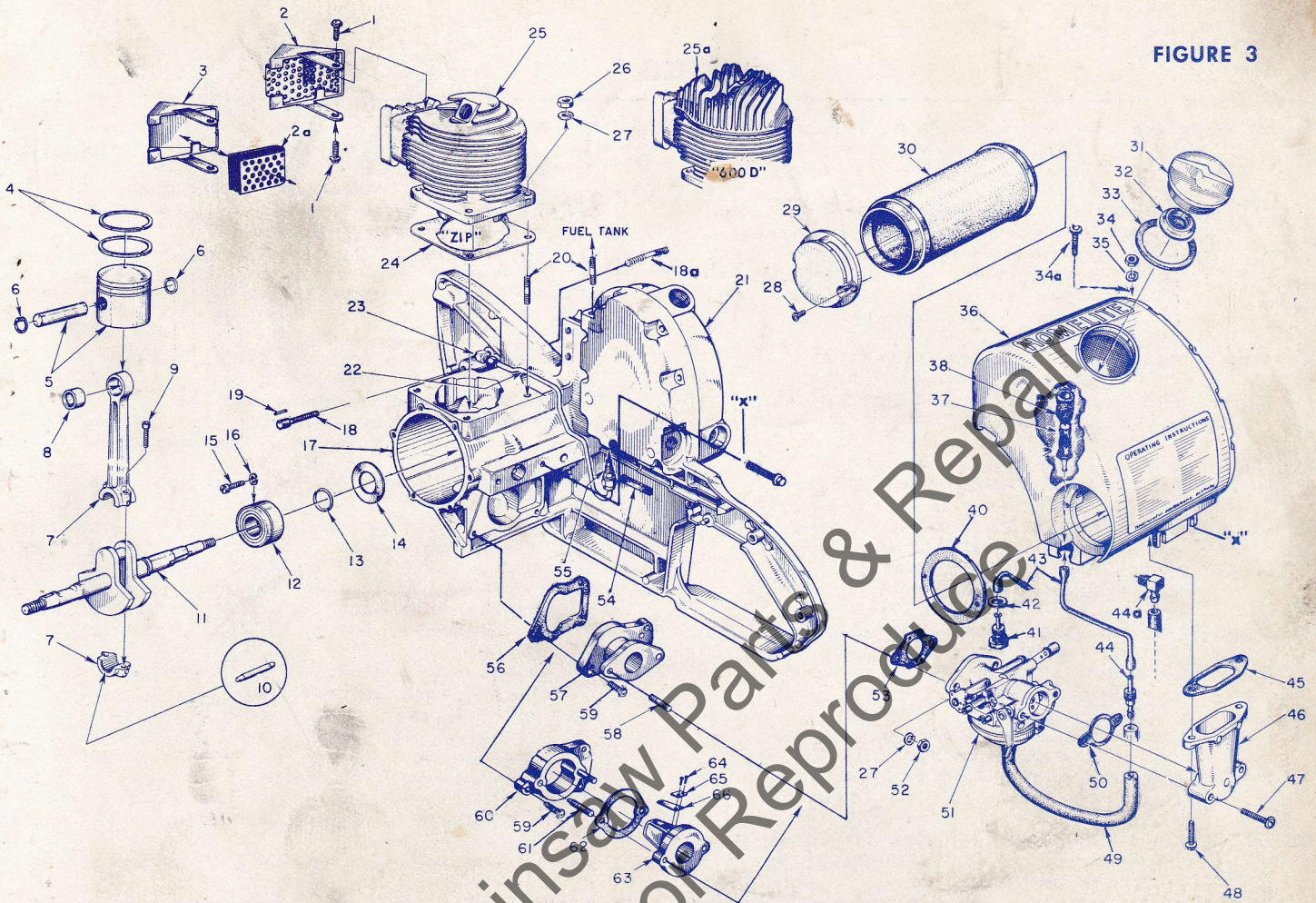
No.	Description	Part No.	600D	600D(AD)	ZIP 1938	ZIP 1939	ZIP-A	ZIP-B	Qty.
50	GASKET - adapter	72971-1	*	*	*	*	*	*	1
51	CARBURETOR - Service replacement	(14) A-57440	*	*	*	*	*	*	1
52	NUT - hex 1/4 - 20	81013	*	*	*	*	*	*	2
53	GASKET - carburetor	55553-3	*	*	*	*	*	*	1
54	PAD - felt	55372	*	*	*	*	*	*	1
55	VALVE - check	(10) A-59456	*	*	*	*	*	*	1
56	GASKET - adapter	55116	*	*	*	*	*	*	1
57	ADAPTER-reed valve	A-55679-A	*	*	*	*	*	*	1
58	Includes: STUD	27464	*	*	*	*	*	*	2
59	SCREW-pan hd., 10-32 x 3/4	80583	*	*	*	*	*	*	3
60	SPACER - adapter	55934	*	*	*	*	*	*	1
61	STUD	55945	*	*	*	*	*	*	2
62	GASKET-adapter spacer	55946	*	*	*	*	*	*	1
63	ADAPTER-reed valve	55932	*	*	*	*	*	*	1
64	SCREW-pan hd., 4-40 x 3/8	80658	*	*	*	*	*	*	8
65	PLATE-reed	55942	*	*	*	*	*	*	4
66	REED	(14) 55941-1	*	*	*	*	*	*	4
67	HANDLE-flush cut								
	1 clamp mount	(15) A-57836	*	*	*	*	*	*	1
	2 clamp mount	(15) A-58237	*	*	*	*	*	*	1
68	CUSHION-clamp (2 mount)	(14) 56281	*	*	*	*	*	*	1
69	CLAMP-handle (2 mount)	(14) 56282-A	*	*	*	*	*	*	1
70	SCREW-hex hd., 12-24 x 3/4	(4) 80821	*	*	*	*	*	*	2
71	SCREW-hex hd., 1/4 - 20 x 3/8	80581	*	*	*	*	*	*	2
72	CLAMP - handle	55614	*	*	*	*	*	*	1
73	CUSHION - clamp	55685	*	*	*	*	*	*	1
74	SCREW-hex hd., 3/8 - 18 x 1 1/2	80087	*	*	*	*	*	*	2
75	WASHER - lock, 1/16	83003	*	*	*	*	*	*	2
76	SCREW-hex hd., 1/4 - 20 x 1 3/8	80573	*	*	*	*	*	*	2
77	PLATE - spiked bumper	55632	*	*	*	*	*	*	1
78	PLATE - inner guide bar	(16) 56871-A	*	*	*	*	*	*	1
79	COVER - clutch	(17) 56101-A	*	*	*	*	*	*	1
80	KEY - clutch	(17) 55225-1A	*	*	*	*	*	*	2
81	SHOE - clutch	(17) 55076-1A	*	*	*	*	*	*	1
82	SPIDER - clutch	(17) 55075-3A	*	*	*	*	*	*	3
			*	*	*	*	*	*	6
83	SPRING - clutch	(17) 55123-C	*	*	*	*	*	*	2
84	WASHER - thrust	55660-1	*	*	*	*	*	*	1
85	RACE - inner	55661	*	*	*	*	*	*	1
86	SPRKT. & DRUM-open type								
	7 tooth, 3/8 pitch	(18) A-56377 †	*	*	*	*	*	*	1
	6 tooth, 1/2 pitch	A-56019 †	*	*	*	*	*	*	1
	8 tooth, .404 pitch	A-57347 †	*	*	*	*	*	*	1
	7 tooth, .404 pitch	A-57344 †	*	*	*	*	*	*	1
	Includes:BEARING, needle	55664	*	*	*	*	*	*	1
86a	SPRKT. & DRUM-rim type								
	7 tooth, 3/8 pitch	(18) A-57363-A †	*	*	*	*	*	*	1
87a	Includes:BEARING, needle	77403	*	*	*	*	*	*	1
88	WASHER - thrust	55163-1	*	*	*	*	*	*	1
89	WASHER - flat, 3/8	84010	*	*	*	*	*	*	1
90	NUT - lock, 3/8 - 24	(17) 81192	*	*	*	*	*	*	1
91	COVER - drive case	A-55668	*	*	*	*	*	*	1
92	Includes:NUT-hex lock	81123	*	*	*	*	*	*	1
	PIN-adjusting	55613	*	*	*	*	*	*	1
94	SCREW - 3/16 - 18 x 2	80617	*	*	*	*	*	*	1
95	PLATE-outer guide bar	(16) 56872-B	*	*	*	*	*	*	1
96	WASHER - lock, 3/8	83018	*	*	*	*	*	*	2
97	NUT - 3/8 - 16	81089-2	*	*	*	*	*	*	2

† NOTE: Check type and number of teeth on sprocket before ordering.



HOMELITE CHAIN SAW
SERIES

600
D





NOTES

- 1 STARTER ASSEMBLY - Refer to F-M Starter Parts Sheet #23649-A (revised 12-63) for starter parts. Assembly #A-56487-1 supersedes #A-56487.
- CUP, starter - Illustrated to show assembly sequence; refer to F-M Starter Parts Sheet #23649-A (revised 12-63) for part numbers.
- INSERT, rope retaining - #58517 supersedes assembly #A-56081 (with two #80619 screws); included in complete starter assembly.
- 2 SHIELD, cylinder - #55015-3 (thicker) supersedes #55015-1; requires longer #80560 SCREW (below).
- SCREW - #80560 used with #55015-3 shield; #80577 (Index #13) used with original (thinner) shield.
- 3 SHIELD, carburetor - #55512-3 supersedes #55512-1.
- SCREW - #80576 (10-32 x) replaces #80625 (10-32 x).
- 4 CUSHION, clamp - #56281 used with #A-57648-1 housing.
- CLAMP, handle - #56282-A used with #A-57648-1 housing.
- SCREW - #80821 supersedes #80289 screw (12-24 x) and #83056 lockwasher (#12).
- 5 SPARK PLUG - Cold weather operation may require hotter plug; see SM#355-CS.
- TERMINAL - #A-55373-A provides improved seal for better starting; see SM#465-CS.
- 6 LEAD, high tension - #55235-A (8"-5MM O.D. high tension cable) supersedes #56029 (7" long).
- SWITCH, toggle - #A-57650-2 supersedes #A-55877 and #AA-72094-A.
- 7 COIL - #55986-A may be used with original rotor (without "-A" suffix); new rotor (with "-A" suffix) requires new coil. See SM#433-CS.
- ROTOR - #57568-A supersedes #57568; requires new coil (with "-A" suffix). See SM#433-CS. #56026-A supersedes 56026 requires new coil; see SM#433-CS.
- POINTS - #A-58165 supersedes #A-57745; see SM#392-CS.
- 8 BACK PLATE - #A-58166, service replacement, supersedes #A-57809. #A-56080-A supersedes #A-56080.
- 9 CAP, oil - #A-56580 (- 16 thrd.) required in new #A-55621-A oil reservoir cover with - 16 holes. #A-56448 (- 14 thrd.) supersedes #AA-71655-1 (- 14 thrd.) used in original oil reservoir cover with - 14 hole. See SM#387-CS.
- GASKET - #56607 used with #A-56580 cap; #72280 used with #A-56448 or #AA-71655-1 caps.
- COVER, oil reservoir - #A-55621-A supersedes #A-55621, requires #A-56580 oil cap included in service replacement crankcase. See SM#187-CS.
- ELBOW #56707 replaces #31734 (elbow) and 31733-1 (adapter).
- 10 FINDER, oil - #A-59449 supersedes #AA-55259-A; not interchangeable, see SLEEVE, FITTING, SPRING, VALVE.
- SLEEVE, flexible - #59000 supersedes #55133-A; not interchangeable, see FINDER, FITTING, SPRING, VALVE.
- FITTING, valve seat - #59450 supersedes #55109-A; not interchangeable; see FINDER, SLEEVE, SPRING, VALVE.
- SPRING - #59022 supersedes #55288-A; not interchangeable; see FINDER, SLEEVE, FITTING, VALVE.
- VALVE, check - #A-59456 supersedes #A-55824; not interchangeable; see FINDER, SLEEVE, FITTING, SPRING.
- PLUNGER, oil - #A-57834-8 (without button) supersedes #A-57834-5 (w/out button) and also #A-57834-4, #A-57834-3 and #A-57834 assemblies with button. See SPRING and BUTTON (below).
- SPRING - #59293 used only with #A-57834-8 plunger. #71762 used with earlier type plungers.
- "O" RING - #A-57834-8, "-5", and "-4" plunger use only 1 #74388 "O" ring.
- BUTTON - #57289-1 now supplied separately.
- 11 CONNECTING ROD - #AA-55195-A supersedes #AA-55195; See SM#414-CS.
- SCREW - #80805 supersedes #80541 and #80541-A.
- CRANKCASE - #A-57640-B supersedes #A-57640-A, #A-57640, #A-57097, and #A-56202. See BOLT, STUD, (below) for variations.
- BOLT - #57175 (with #41738 pin) in crankcase #A-57640-B, #A-57640-A and #A-57640.
- STUD - #55623 used in crankcase #57097, A-56202, A-56161-A, #A-56161, and #A-55835.
- PIN - #41738 used w/#57175 guide bar bolt; see BOLT (above).
- STUD - #55871 (fuel tank) fits service replacement crankcase #A-57640-B only, enlarge diameter of fuel tank hole to accommodate large stud. See NUT and WASHER (below).
- #57713 (fuel tank) fits earlier crankcases with 10 - 32 tap lock insert for fuel tank attachment, interchangeable with #80572 screw. See NUT and SCREW (below).
- NUT - #81114 used with #55871 stud (above) and #84019 flat washer (below).
- #81108 used with #57713 stud (above).
- SCREW - #80572 used in earlier crankcases with 10 - 32 tap lock insert; interchangeable with #57713 stud and #81108 nut (above).
- WASHER - #84019 used with #81114 nut on #55871 stud (above).
- 12 GASKET, cylinder - #56864 supersedes #55050-A.
- 13 SCREW - #80630 supersedes #80571; see SM#322-CS.
- AIR FILTER - #57337-A supersedes #57337 and #56464; see SM#322a-CS, #384-CS.
- CAP, fuel tank - #A-56907 (1 O.D.) service replacement for #A-56908 (2 O.D.) and supersedes #A-55305 which is no longer available. See VALVE and GASKET below.
- VALVE, relief - #56865 used in #A-56907 and #A-56908 caps #A-55301-C used in discontinued #A-55305 cap, retained with three #80392 screws and #83083 lockwashers.
- FUEL TANK - #A-57781-A service replacement (diameter of hole in mounting lug enlarged to) supersedes #A-57781 and #A-55671 which have diameter hole in mounting lug. Also see Note 11, STUD #55871.
- STRAINER, fuel pick-up - #A-59251 supersedes #A-56200.
- ELEMENT, felt - #59253 supersedes #74374 which also used #56196 bumper.
- GASKET - #57041 with longer #80630 screws must be used with #57337-A filter (see above).
- FITTING, outlet - #55572-A used in original fuel tanks; not required in #A-57781A or #A-57781 replacement tanks.
- GASKET, outlet fitting - #55676 used with #55572 fitting (above).
- FITTING, fuel line - #57652 used with replacement fuel tanks #A-57781-A and #A-57781. #74917 elbow used in original fuel tanks.

(continued on page 7)



NOTES

- 14 CARBURETOR - #A-57440 (HL-104A, HL-105A) service replacement; use #58191 REPAIR PARTS KIT, #55836 GASKET SET and refer to CARBURETOR PARTS SHEET #23538-A. Original carburetor #A-56484 (HL-46B) no longer available; use #77343 REPAIR PARTS KIT, #57919 GASKET SET, and refer to CARBURETOR PARTS SHEET #23521-A. Original carburetor #A-56505-A (6-CP) no longer available; use #77337 REPAIR PARTS KIT, #77336 GASKET SET, and refer to CARBURETOR PARTS SHEET #23520.

NOTE: #23731 CARBURETOR REPLACEMENT & REPAIR PARTS LIST is a quick reference for service replacement carburetors and fast-moving carburetor parts.

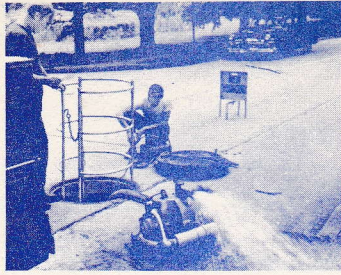
GASKET, carburetor - #55553-3 supersedes #55553.
REED - #55941-1 (stainless steel) supersedes #55941; see SM#437-CS.

- 15 HANDLE - #A-57836 (flush cut) supersedes #A-56093, #A-56466, #A-57037 HANDLE w/brace can also be used without brace.

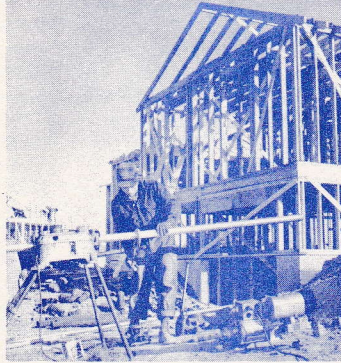
- 16 PLATE, inner guide bar - #56871-A supersedes #56871 and #55666.
PLATE, outer guide bar - #56872-B supersedes #56872-A, #56872, and #55667.
- 17 COVER, clutch - #56101-A supersedes #56101, use #55075-3A spider. #55659-B supersedes #55659-A; use #55075-A spider. See SM#170-CS, 273-CS.
KEY - #55225-1A supersedes #55225-1, #55225.
SHOE, clutch - #55076-1A supersedes #55076-1.
SPIDER, clutch - #55075-3A supersedes #55075-3, #55075-1A; used with #56101-A clutch cover.
#55075-A supersedes #55075, used with #55659-B clutch cover. See SM#170-CS and 273-CS.
SPRING, clutch - #55123-C supersedes #55123-B, #55123-A, #55123; use only in pairs. See SM#317-CS.
NUT - #81192 supersedes #81116, permits use of #22808 combination wrench.
- 18 SPROCKET & DRUM - #A-56377 supersedes #A-55662; see SM#217-CS.
#A-57363-A supersedes #A-57363.

Leon's Chainsaw Parts & Repair
Do Not Sell or Reproduce

**You'll
SPEED WORK
and make
MORE MONEY
with...**



HOMELITE
SELF-PRIMING PUMPS



HOMELITE
DEPENDABLE GENERATORS



HOMELITE
POWERFUL ONE-MAN CHAIN SAWS



HOMELITE
ONE-MAN CONCRETE VIBRATORS



HOMELITE — BOSCH (Germany)
ELECTRIC BUILDER'S HAMMERS



HOMELITE

A **textron** DIVISION

PORT CHESTER, N. Y., U. S. A.