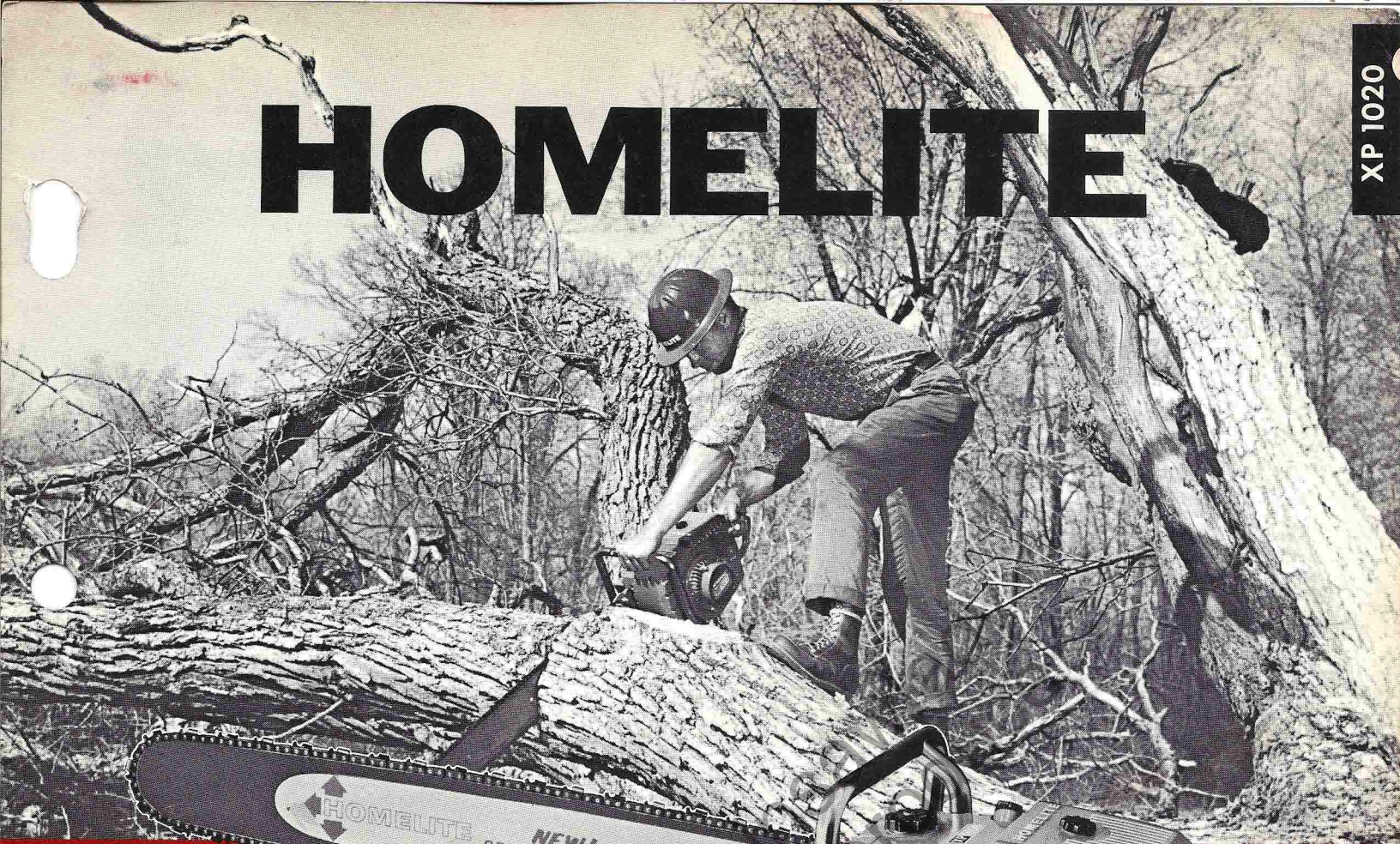


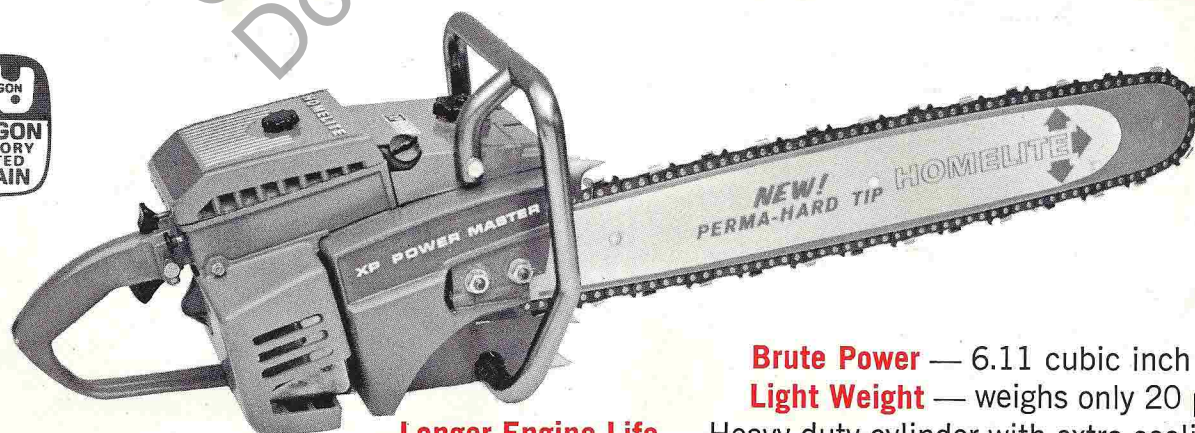
HOMELITE

XP 1020



XP 1020

DIRECT DRIVE CHAIN SAW FOR PROFESSIONALS



Brute Power — 6.11 cubic inch engine

Light Weight — weighs only 20 pounds

Longer Engine Life — Heavy duty cylinder with extra cooling fins

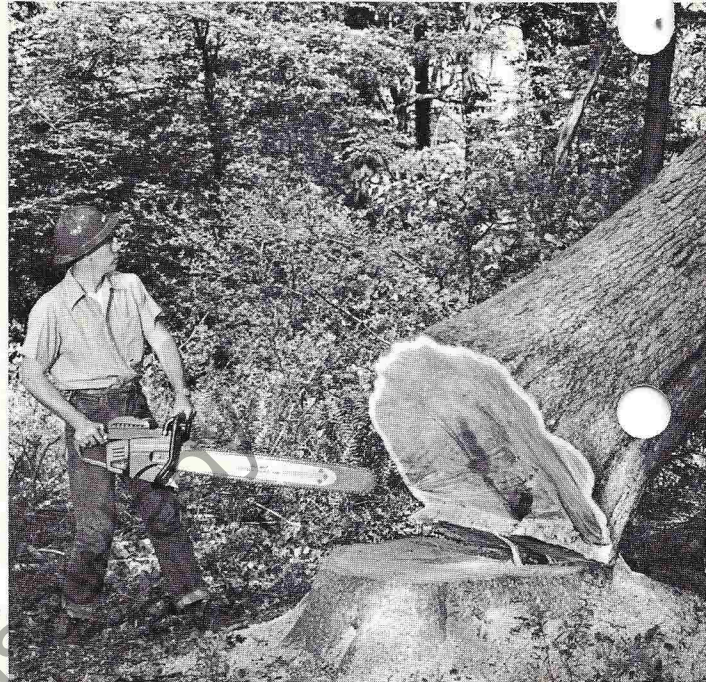
EXTRA POWER FOR PRODUCTION CUTTING!

DIRECT DRIVE XP1020 CHAIN SAW

HOMELITE SPECIFICATIONS

ENGINE

ENGINE TYPE	■	Homelite two cycle, loop scavenged single cylinder
CYLINDER	■	One piece Cast Aluminum with extra-heavy chrome plating; vertical fins on head for maximum heat dissipation
BORE	■	2 $\frac{3}{16}$ "
STROKE	■	1 $\frac{5}{8}$ "
DISPLACEMENT	■	6.11 cubic inch
INTAKE VALVE	■	High performance pyramid with 4 reeds
COMPRESSION RATIO	■	7:1
IGNITION TIMING	■	30° BTDC Static
ENGINE SPEED	■	Under load — 5500-6000 RPM
CLUTCH ENGAGING SPEED AND TYPE	■	2800 RPM — 6 shoe double spring centrifugal
BREAKER POINT SETTING AND LOCATION	■	.015" — protected in sealed box under flywheel
SPARK PLUG TYPE AND GAP	■	Champion CJ6 — .025"
THROTTLE CONTROL	■	Trigger in handle with throttle lock
BEARINGS	■	Needle and Ball Bearings
CHAIN TYPE	■	.404 Pitch #59 Omark
SPROCKET	■	7 Tooth, .404 Pitch
CHAIN SPEED UNDER LOAD	■	2828 Feet per Minute



FEATURES

CARBURETOR	■	Tillotson All-Position Diaphragm with integral fuel pump, accelerator pump, and fuel strainer ... external high and low, idle speed adjustments
STARTER	■	Homelite Recoil, Positive Engagement with Replaceable Starter Rope Bushing
MAGNETO	■	High tension — water and dust proof with protected coil
FUEL FILTER	■	All-Position Flexible Pick-up with filter integral in fuel tank, wire mesh screen in carburetor
AIR FILTER	■	Protected Micro Mesh Polyester Fiber for long service life with integral gasket
MUFFLER	■	Spark arresting — quiet baffled type
CHAIN OILER TYPE AND CAPACITY	■	Positive Manual 8 oz. reservoir w/ filter

GENERAL

WEIGHT LESS BAR AND CHAIN	■	20 lbs.
FUEL TANK CAPACITY	■	49 oz. with pressure sensitive replaceable automatic vent
FUEL TYPE AND MIXTURE	■	Regular gasoline mixed with Homelite oil or SAE 30 motor oil 16:1 (1/2 pint per gallon)
BAR SIZES	■	17, 21, 25, 30, 36, 42 inches Plunge-cut bow, Clearing and Utility Bars
HANDLE BAR TYPES	■	Flush cut or wrap-around, completely covered with non-slip vinyl
SPIKED BUMPER PLATES	■	Standard or extra-long spikes

HOMELITE A **Textron** DIVISION PORT CHESTER, N.Y. U.S.A.

Specifications Subject To Change Without Notice

OPTIONAL FEATURES



AUTOMATIC CHAIN OILER (optional) — CAPACITY 10 oz. preadjusted for Positive Chain Lubrication at all cutting speeds.