

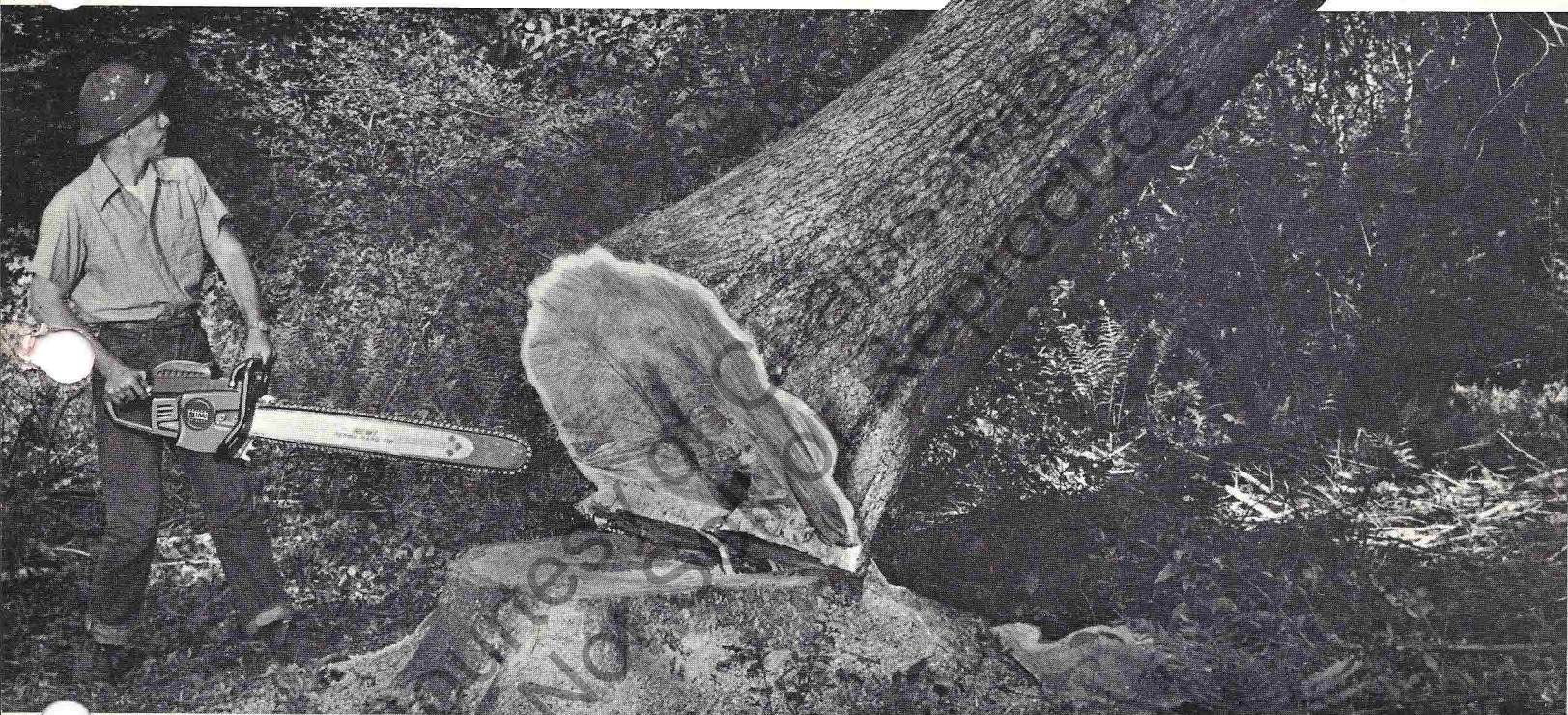
XP 1020
AUTOMATIC



HOMELITE®

XP 1020

AUTOMATIC



DIRECT DRIVE CHAIN SAW FOR PROFESSIONALS NOW WITH AN AUTOMATIC OILER



AUTOMATIC OILER—Positive chain lubrication plus manual override

BRUTE POWER—6.1 cubic inch engine

LIGHT WEIGHT—weighs only 21 pounds

LONGER ENGINE LIFE—Heavy duty chrome-plated cylinder with extra cooling fins



HOMELITE

XP 1020

AUTOMATIC

SPECIFICATIONS

CLASS XP

Displacement 6.1 cubic inch
Oiler Type Automatic with manual override
Dry Weight 21 pounds

ENGINE

Type Homelite, single cylinder, 2 cycle
(loop scavenged)
Displacement 6.1 cubic inch
Bore $2\frac{3}{16}$ "
Stroke $1\frac{1}{8}$ "
Engine Speed 6000 RPM, under load
Bearings Heavy duty ball and antifriction needle
Starter Pawl type, positive engagement with
automatic rewind
Muffler Spark arresting, baffled, quiet type
Clutch Heavy duty centrifugal,
2800 RPM engaging speed

FUEL SYSTEM

Carburetor Tillotson, all position, double
diaphragm with integral fuel pump, accelerator
pump, and fuel strainer, external adjustments
Intake Valve Pyramid, with 4 stainless steel reeds
Fuel Capacity 49 oz.
Fuel Pick-up Flexible fuel pick-up with
replaceable filter
Air Filter Micro mesh fiber with integral gasket

Throttle Control Trigger in handle with
safety starting throttle lock
Fuel Mixture with each gallon
of regular gas mix $\frac{1}{2}$ pint (16:1)
Homelite oil or SAE 30 oil

IGNITION SYSTEM

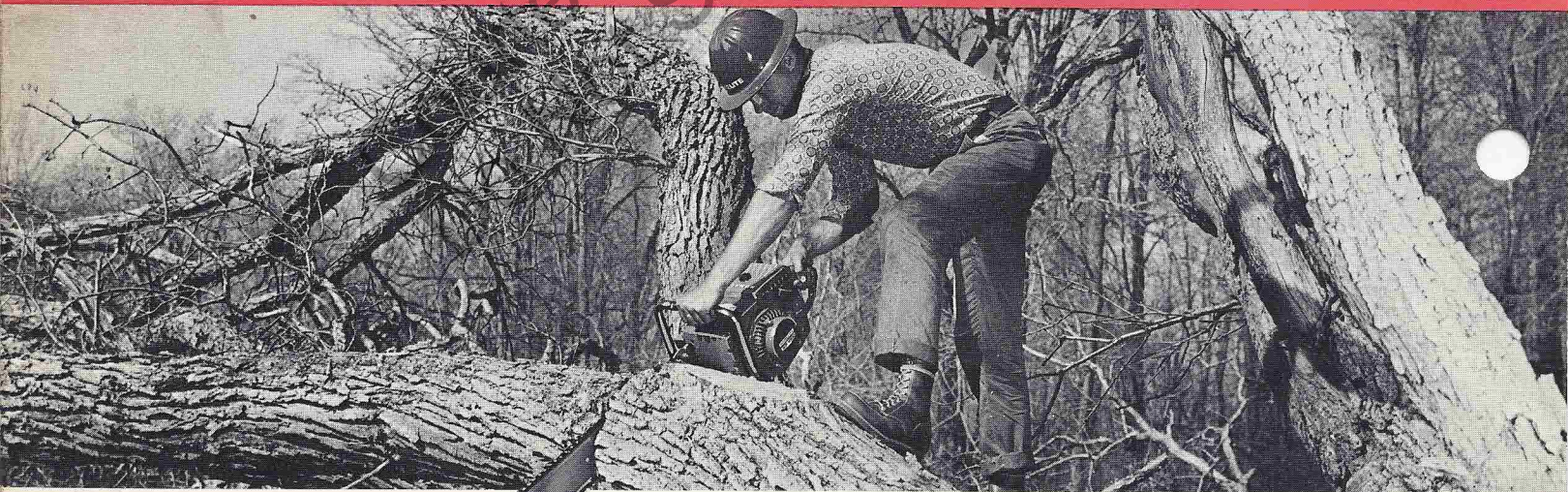
Magneto High tension, moisture and dust proof
Breaker Point Setting and Location 0.015, protected
in sealed box under flywheel
Timing 30° BTDC static
Spark Plug Type and Gap Champion CJ-6, .025" gap

GUIDE BAR, CHAIN AND SPROCKET

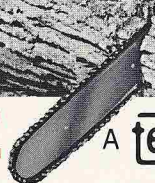
Guide Bar063 gauge, induction hardened with
welded hard-faced tip, sizes 17" to 42"
Chain 404 pitch #59 Oregon micro-bit
Chain Speed 3200 feet per minute
Chain Oiler Type Positive, gear driven,
automatic with manual override
Chain Oiler Capacity 8 Oz. reservoir
Sprocket 8 tooth, .404 pitch

GENERAL

Handle Bars Vinyl coated flush cut or wrap-around
Attachments Plunge-cut bow,
clearing and utility bars
Bumper Spike Standard or extra long



HOMELITE



A **textron**

DIVISION PORT CHESTER, N. Y. U. S. A.