

PRICE .25

HOMELITE

XL-Brushcutter

XL-BC
XL-BCA



Brushcutter

PARTS LIST

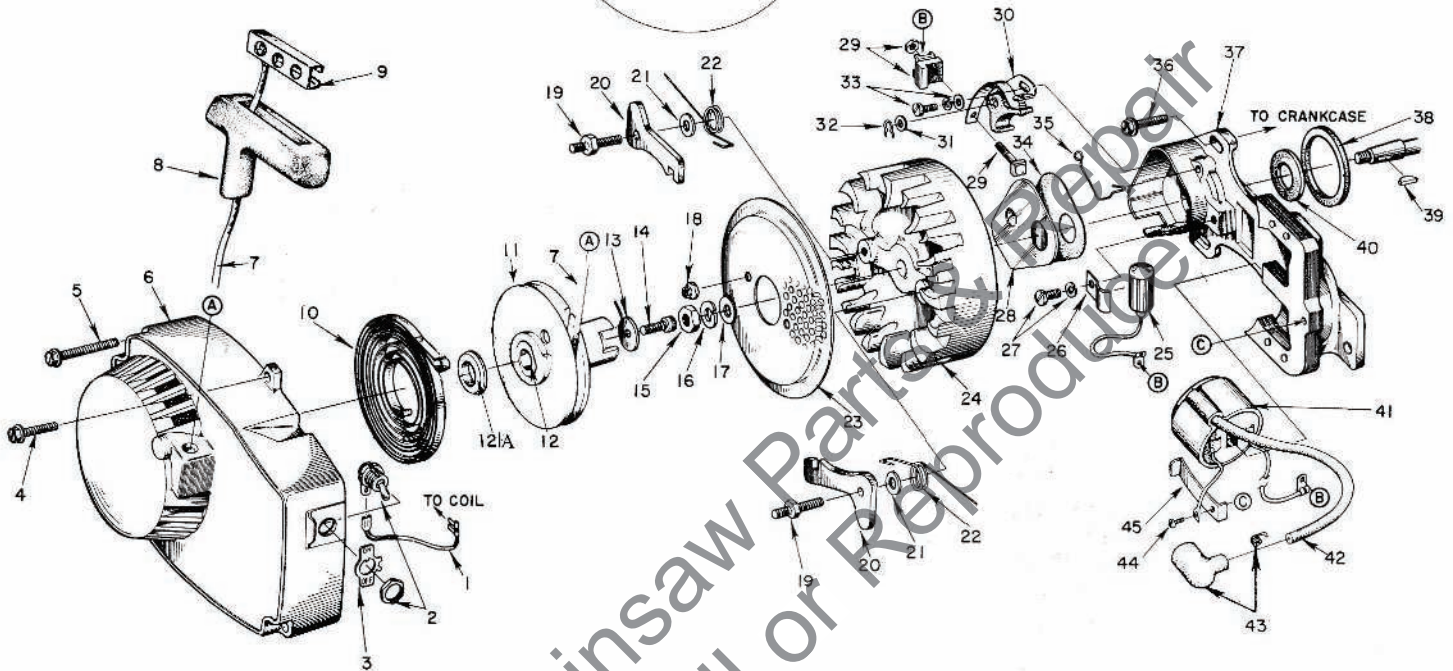
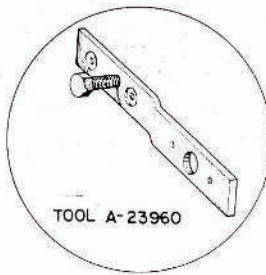


FIGURE 1

Index No.	Part No.	Description	No. Req'd	Index No.	Part No.	Description	No. Req'd
1	* A59031	LEAD-ground w/terminals	1	23	58765	SCREEN - starter	1
2	57650-3	SWITCH-w/nut	1	24	58809	ROTOR - magneto	1
3	72085-A	PLATE - "ON OFF"	1	25	63250	CONDENSER	1
4	80676	SCREW-hex hd, 12-24x 5/8	4	26	59622	CLAMP - condenser	1
5	58693	SCREW-hex hd, 12-24x 1 11/16	3	27	30261	SCREW GROUP-condenser	1
6	A64516	FAN HOUSING	1	28	55811	COVER - breaker box	1
		Includes:		29	A58934	TERMINAL BLOCK GROUP	1
	64443	BUSHING - starter post	1	30	A58914	POINTSET-w/felt	1
	59313	BUSHING - rope	1			Includes:	
7	58806	ROPE - starter	1	31	28029	WASHER - point	1 or 2
8	58915	GRIP - rope	1	32	28008	CLIP - point pivot post	1
9	58847	INSERT	1	33	78421	SCREW GROUP - points	1
10	58764-A	SPRING - recoil	1	34	58810	GASKET - cover	1
11	A64446	PULLEY - starter	1	35	76413	SPRING - cover	1
		Includes:		36	80676	SCREW-hex hd, 12-24x 5/8	3
12	64049-A	LOCK - spring	1	37	58875-A	PLATE & CORE	1
12A	64400	BUSHING - spring lock	1	38	59638	GASKET	1
13	58763	WASHER - retaining	1	39	75078	KEY - rotor	1
14	80648	SCREW-socket, 10-32x 1/2	1	40	59760	SEAL - felt	1
15	81117	NUT-hex, 5/16-24	1	41	58874	COIL	1
16	83002	WASHER - lock, 5/16	1	42	58966	LEAD - hi-tension	1
17	84056	WASHER - flat, 5/16	1	43	A33055	TERMINAL	1
18	81109-2	NUT-hex lock, 10-32	2	44	58872	SCREW - coil ground	1
19	58757-B	STUD - shoulder	2	45	63726	CLIP - coil retaining	1
20	58756	FINGER - starter	2				
21	58851	WASHER	2				
22	58738	SPRING - starter finger	2				

*3" of #20 insulated, stranded wire with one straight (1/4") snap-on terminal, and one flag (3/16") snap-on terminal.
 #8-1/2" 7MM (O.D.) hi-tension cable.

HOMELITE
XL-Brushcutter

BRUSHCUTTER

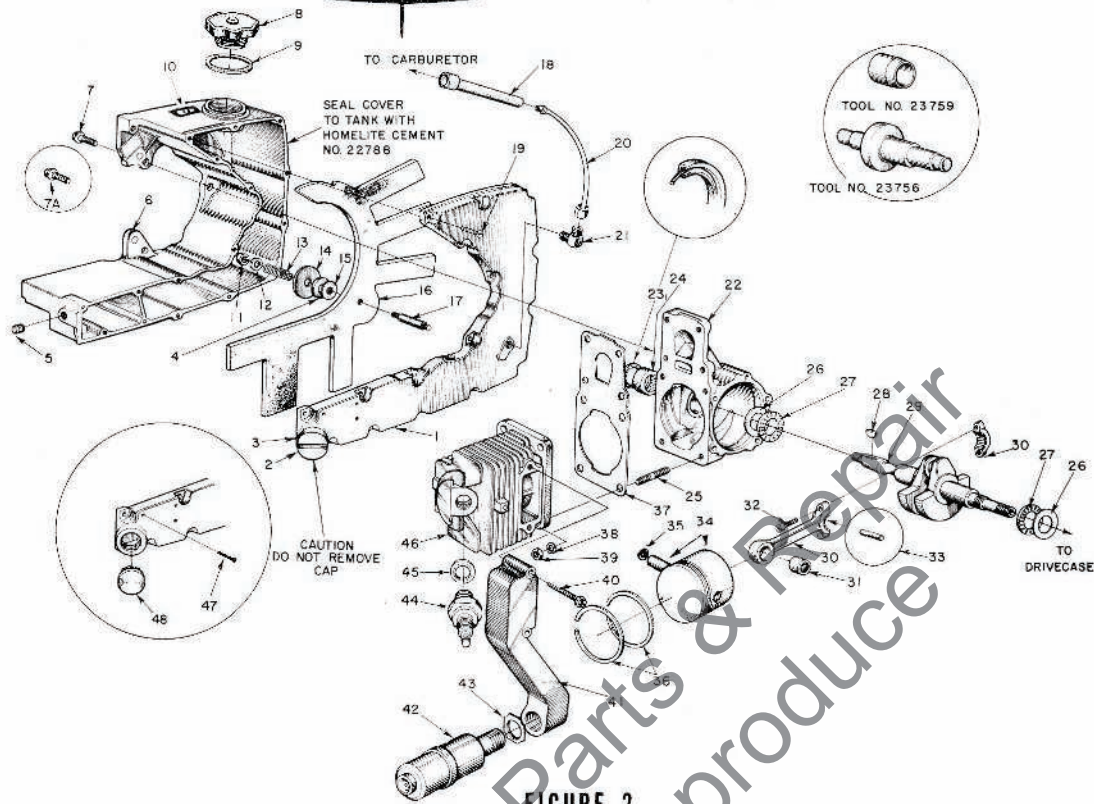


FIGURE 2

Index No.	Part No.	Description	No. Req'd	Index No.	Part No.	Description	No. Req'd
1	A63271	COVER-fuel tank, Note 1	1	25	55871	STUD	4
		Includes:		26	58725	RACE - thrust bearing	2
2	A56580-1	CAP - slotted	1	27	58726	BEARING - needle thrust	2
3	56607	w/GASKET	1	28	75078	KEY - rotor	1
4	59457	WASHER - felt	1	29	58439	CRANKSHAFT	1
5	59571	PLUG - pipe	1	30	A58769	CONNECTING ROD	1
6	58732-A	TANK-fuel & oil Note 2	1			Includes:	
7	63407	SCREW-hex, 1/4-20 x 3/4,	1	31	58724	BEARING	1
		Note 3		32	80889	SCREW-socket, 8-36 x 1/2	2
7A	80867	SCREW-hex, 12-24 x 3/4, Note 3	3	33	A58864	ROLLERS - set (28)	1
8	A64140-A	CAP - fuel filler	1	34	A58903-A	PISTON AND PIN	1
		Includes:				Includes:	
9	58957	GASKET	1	35	75120	RING - retaining	1
10	64144	DECAL	1	36	58877	RING - piston	2
11	81109	NUT - lock, 10-32	1	37	58513	GASKET	1
12	84003-1	WASHER - flat, #10	1	38	83009	WASHER - lock, 1/4	4
13	58867	SPRING - compression	1	39	81065-2	NUT - 1/4-28	4
14	58866	WASHER - wick	1	40	80868	SCREW-hex, 12-24 x 1 1/2	2
15	58865	GASKET	1	41	59392	MANIFOLD	1
16	58862	WICK - fuel pick-up	1	42	59397	MUFFLER	1
17	58519	STUD - wick	1	43	59510	NUT	1
18	58958	FUEL LINE - flexible	1	44	63710-S	SPARK PLUG Note 6	1
19	80513	SCREW-rd., #6 x 1/2	16			Includes:	
20	A59155	FUEL LINE	1	45	25038	GASKET	1
21	58995	ELBOW - fuel line	1	46	58706-B	CYLINDER Note 5	1
22	A58799-D	CRANK CASE Note 4	1	47	86301	COTTER PIN	1
		Includes:		48	59537	PLUG - button	1
23	58688-A	SEAL	1				
24	58956	BEARING	1				

NOTE 1 - Recommended service replacement Cover #A-63271 used for all XL Brushcutters; does not require cotter pin (index #47).

NOTE 2 - Service replacement Tank has 1/4" mounting holes, requires three 1/4-20 x 3/4 screws (#63407) and mating 1/4-20 tapped holes in crankcase. See Note 3 and 4.

NOTE 3 - Shoulder Screw #63407 requires 1/4" holes in fuel tank ("F" drill), and 1/4-20 tapped holes in crankcase. Screw #80867 used to mount early tanks (3/16" holes) to early crankcase with 12-24 threads. See Note 3 and 4.

NOTE 4 - Service replacement Crankcase has three 1/4-20 tapped holes for tank mounting screws. Early crankcase with 12-24 threads may be tapped out. See Notes 2 and 3.

NOTE 5 - Cylinder #58706-B is service replacement for all XL Brushcutters.

NOTE 6 - SPARK PLUG - 63710-S (CJ-8) Plug available only with standard Electrodes - use A33055 Terminal. 58917-S (TJ-8J) Plug and 59588-S (UTJ-11P) Plug with Platinum Electrodes use 58918 Cover and 58919 Spring.



FIGURE 3

Index No.	Part No.	Description	No. Req'd	Index No.	Part No.	Description	No. Req'd
1	58537-A	GASKET - carburetor	2	19	80891	SCREW-hex hd., 12-24x7/8	5
2	58780	SPACER - carburetor	1	20	A59607	CHAMBER-carburetor-See Note 1	1
3	58958	FUEL LINE - flexible	1	21	59329	PLUG - felt	1
4	*A59535-B	CARBURETOR	1	22	58362	GROMMET	1
	58971	GASKET SET	1	23	57289-1	BUTTON	1
	58972	REPAIR PARTS KIT	1	24	A59301-A	GOVERNOR - air vane	1
5	86324	COTTER PIN	2	25	80658	SCREW-pan hd., 4-40x3/16	4
6	A58826	ROD - choke	1	26	59260	LINK - governor	1
7	59444	INSTRUCTIONS	1	27	80260	SCREW-rd. hd., 8-32x3/8	2
8	58773	COVER - air filter	1	28	59058	GROMMET - "LO-III"	1
9	A58882	NUT - cover	1	29	58775	REED	1
10	58319-A	RING - retaining	1	30	59053	BACK-UP - reed	1
11	63569	ELEMENT - air filter	1	31	58776	STOP - reed	1
13	58092-1	GASKET - mounting stud	1	32	59369	SPACER - clamp	1
14	83046	WASHER - lock, #10	2	33	59414-A	CASING-throttle cable - See Note 2	1
15	80481	SCREW-hex hd., 10-32x2 1/4	2	34	59415-A	CABLE - throttle	1
16	A58818-A	BRACKET - mounting	1	35	80893	SCREW-set, 4-40 x 1/8	1
17	80575	SCREW-bind. hd., 8-32x1/4	2	36	A59285	COLLAR - throttle cable	1
18	A59299	PLATE - speed adjusting	1	37	59367	CLAMP - throttle cable	1
				38	59242	SPRING - governor	1

Note 1: Service replacement chamber #A-59607 supplied with three plugged holes, remove these plugs to mount throttle cable and cable clamp and spacer.

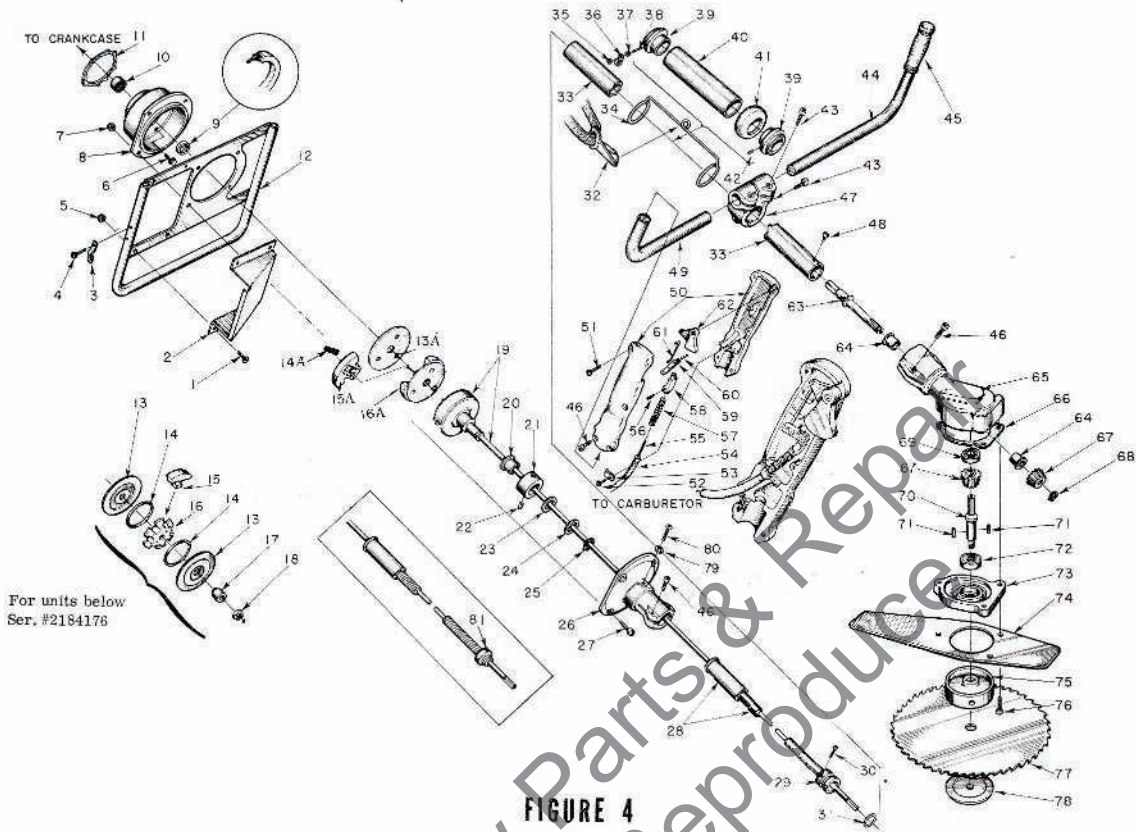
*Refer to Carburetor Parts List #23910.

∇ Included in Repair Parts Kit #58972.

∇ Attach to Carburetor Chamber with HOMELITE CEMENT #22788, included with Chamber

SPECIAL TOOLS (available on order)

Part No.	Description	Part No.	Description
A22808	COMBINATION WRENCH	22963	ROD-locking (spindle)
22828	PLIERS - piston snap ring	//23759	SLEEVE-crankshaft assembly
23528	WRENCH-socket screw (conn. rod)	//A23960	REMOVER & LOCKING BRACKET - rotor
//23756	BEARING ASS'Y. & DISASSEMBLY-conn. rod	A23696	REMOVER-threaded spider & sun gear (below Ser. #2184176)
23757	BEARING ASS'Y. & DISASSEMBLY-drive and crank cases	23800	SEAL ASSEMBLY TOOL
23758	SEAL ASSEMBLY - drive and crankcases	22061	WRENCH - socket screw
A2393-A	COMBINATION WRENCH	23605	WRENCH - socket screw
A23949	PLUG - piston pin removal	A23934	REMOVER - clutch back plate (Ser. #2184176 and up)



For units below
Ser. #2184176

Index No.	Part No.	Description	No. Req'd	Index No.	Part No.	Description	No. Req'd
1	80021	SCREW-rod,hd., 4-32 x 7/16	4	42	80014	SCREW-socket,hd., 10-32 x 3/8	1
2	59055	BAFFLE - air	1	43	80008	SCREW-socket,hd., 5/16-18 x 1	3
3	59284	CLAMP - cable	1	44	57802-A	HANDLE - left	1
4	80019	SCREW-rod,hd., 10-32 x 1/4	2	45	59276	GRIP - handle	1
5	81131	NUT - hex., 8-32	4	46	80370-1	SCREW-socket,hd., 1/4-20 x 3/4	6
6	80830	SCREW-hex,hd., 12-24 x 3/16	5	47	55208-2	CLAMP - handle	1
7	81108	NUT - hex., 1/4-20	1	48	80853	SCREW-rod,hd., selftap, 7/8 x 1/4	1
8	A59258	DRIVE CASE	1	49	59450	HANDLE - right	1
		Includes:		50	A50502	GRIP - throttle w/pins	1
9	58688-A	SEAL	1			Includes:	
10	58959	BEARING	1	51	80682	SCREW-pan,hd., 8-32 x 5/8	2
11	69355	WASHER	1	52	80600	SCREW-pan,hd., 6-32 x 5/16	1
12	A59094-1	FRAME ASSEMBLY	1	53	59205	CLAMP - cable	1
13	*58731	COVER - clutch	1	54	59414-A	CASING - throttle cable See Note 3	1
13A	62531-1	COVER - clutch	1				
14	*55123-C	SPRING - clutch	2	55	59415-A	CABLE - throttle See Note 3	1
14A	63034	SPRING - clutch	3	56	80988	SCREW-set, 4-40 x 1/8	1
15	*58882	SHOE - clutch	3	57	59497	SPRING - return	1
15A	63033	SHOE - clutch	3	58	59594	CONNECTOR - cable	1
16	*58927-1	SPIDER - clutch	1	59	59393	LEVER - throttle	1
16A	62533-1	PLATE - clutch back	1	60	59205	PIN	1
17	62535	SPACER	1	61	59392	LINK - throttle	1
18	81142	NUT - hex 3/8-24	1	62	A59288	TRIGGER - throttle	1
19	A59223	DRIVE SHAFT & DRUM	1	63	A57913	SHAFT - gear	1
20	59027	BEARING - flanged	1	64	57913	BEARING	2
21	58825	WASHER	1	65	57849-2	LOWER HEAD	1
22	59026	WASHER	1	66	57946	GASKET	1
23	59028	WASHER - thrust	1	67	57847	GEAR - bevel	2
24	59028	SPACER	1	68	57925	RING - retaining	1
25	59029	RING - retaining	1	69	57928-8	BEARING - ball	1
26	59024-A2	UPPER HEAD	1	70	57551	SHAFT - blade	1
27	80181-1	SCREW-Lex,hd., 1/4-20 x 3/4	4	71	58225-1A	KEY	2
28	A63351	CASING - shaft, Note 1	1	72	72040-8	BEARING - ball	1
		Includes:		73	57800-2	RETAINER - bearing	1
29	63340	BUSHING - split	3	74	37863	GUARD - blade	1
30	80950	SCREW-socket, 3-40 x 3/8	3	75	58076-1	SPINDLE HEAD	3
31	63350	"O" RING	3	76	50423	SCREW-socket,hd., 1/4-20 x 1	8
32	35460-8	TADNESS	1	77	50425	BLADE - saw	1
33	57900	TUBE	1	78	56178-1	NUT - blade shaft	1
34	53463	HANGER	1	79	83046	WASHER - lock, #10	1
35	81100	NUT-lock, hex., 10-32	1	80	80137	SCREW-rod,hd., 10-32 x 1/2	1
36	68320	CLIP - throttle cable	1	81	57291-A	COLLAR-casing, Note 2	5
37	81010-1	NUT - hex., 10-32	1				
38	80900	SCREW-socket,hd., 10-32 x 7/8	1				
39	53844	COLLAR - tube	2				
40	53845	TUBE - hanger	1				
41	53846	BUMPER	5				

ACCESSORIES

Part No.	Description
57951	SHOULDER STRAP

Part No.	Description
A-63252	GRASS TRIMMER

NOTE 1 - CASING #A-63351 is service replacement for all XL BRUSHCUTTER models, supersedes flexible type casing.

NOTE 2 - COLLAR #57291-A used on early, flexible type casing.

NOTE 3 - See Page #4 - NOTE #2

ALWAYS FURNISH MODEL AND SERIAL NUMBER WHEN ORDERING PARTS.



Leon's Chainsaw Parts & Repair
Do Not Sell or Reproduce

PRINTED IN U.S.A.

HOMELITE

A **textron** DIVISION

PORT CHESTER, N. Y.

PART NO. 23811-A

REV. 1

567