

PART NO. 24190-B

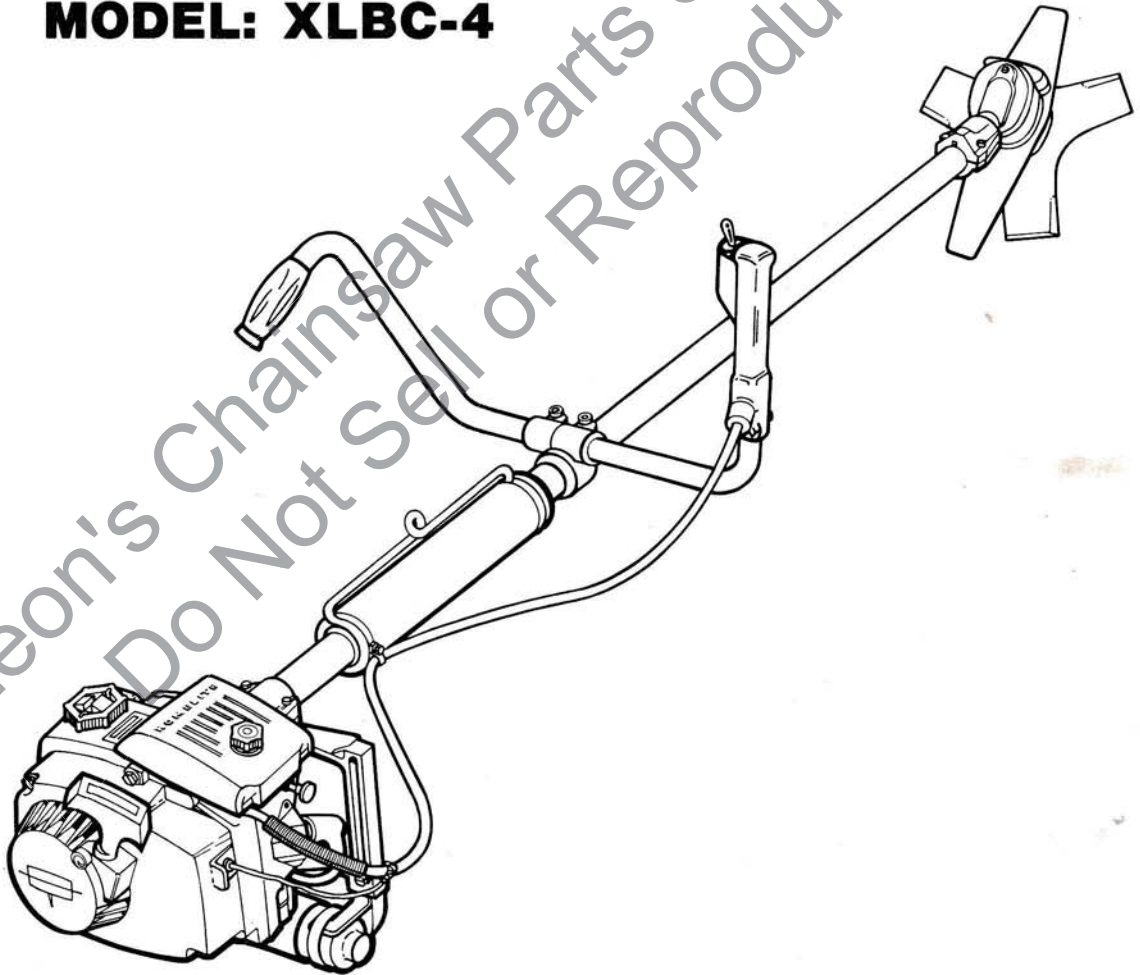
Printed in U.S.A.

Price 35¢

HOMELITE®

BRUSHCUTTER

MODEL: XLBC-4



HOMELITE **TEXTRON**

Homelite Division of Textron Inc.

XLBC-4

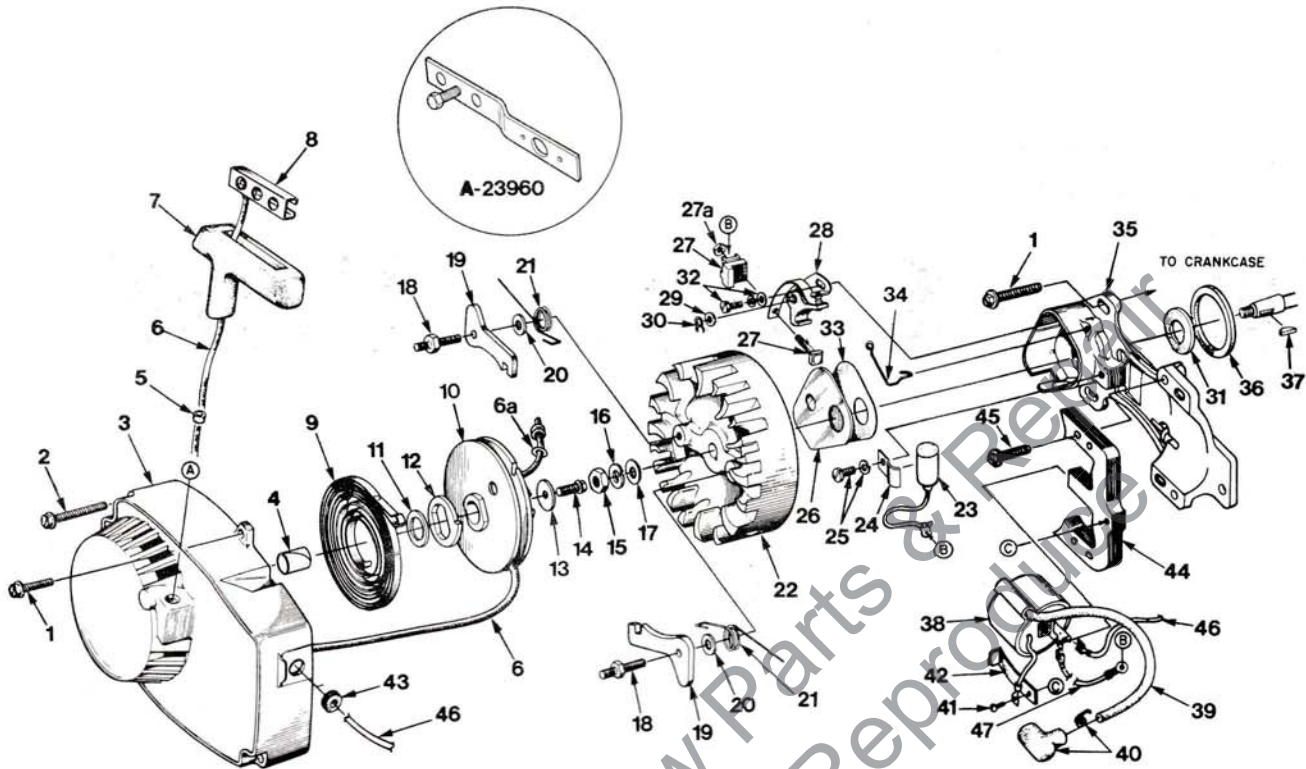


FIGURE 1

No.	Description	Part No.	Qty.
1	SCREW- Hex, #12-24 x 5/8	80676	4
2	SCREW- Hex, #12-24 x 1-11/16	58963	3
3	FAN HOUSING	A-64518	1
	Includes:		
4	BUSHING- Starter post	64443	1
5	BUSHING	67177	1
6	ROPE- Starter	A-93875	1
	Includes:		
6a	WASHER- Flat	93862	1
7	GRIP- Rope	A-69962-A	1
	Includes:		
8	INSERT	70018-A	1
9	SPRING- Recoil	58764-A	1
10	PULLEY- Starter	A-64446	1
	Includes:		
11	BUSHING- Spring lock	64400	1
12	LOCK- Spring	64049-B	1
13	WASHER- Retaining	58763	1
14	SCREW- Hex, 10-32 x 1/2	80648	1
15	NUT- Hex, 5/16-24	81117	1
16	WASHER- Lock, 5/16	83002	1
17	WASHER- Flat, 5/16	84056	1
18	STUD- Shoulder	58757-D	2
19	PAWL- Starter	58756	2
20	WASHER	70901	2
21	SPRING- Starter pawl	65375-2	2
22	ROTOR- Magneto	70639	1
23	CONDENSER	63250-A	1

No.	Description	Part No.	Qty.
24	CLAMP- Condenser	59622	1
25	SCREW- Condenser clamp	30261	1
26	COVER- Breaker box	58811	1
27	TERMINAL BLOCK	A-68162	1
	Includes:		
27a	NUT	93099	1
28	POINT SET- W/felt	A-58914-A	1
	Includes:		
29	WASHER- Point	28028	1 or 2
30	SPRING- Lock	28008	1
31	SEAL- Felt	59760	1
32	SCREW- Contact plate	76421	1
33	GASKET- Cover	58810	1
34	SPRING- Cover	76413	1
35	BOX- Breaker	93094	1
36	GASKET- Breaker	59538	1
37	KEY- Rotor	75078	1
38	COIL	93097	1
39	LEAD- Hi tension	58966	1
40	TERMINAL	A-33055	1
41	SCREW- Coil ground	64090	1
42	SPRING- Coil wedge	63726	1
43	GROMMET	75036	1
44	CORE	93098	1
45	SCREW- (Coil & core retaining)	82248	2
46	LEAD- Ground	A-51243	1
47	LEAD	93095	1

XLBC-4

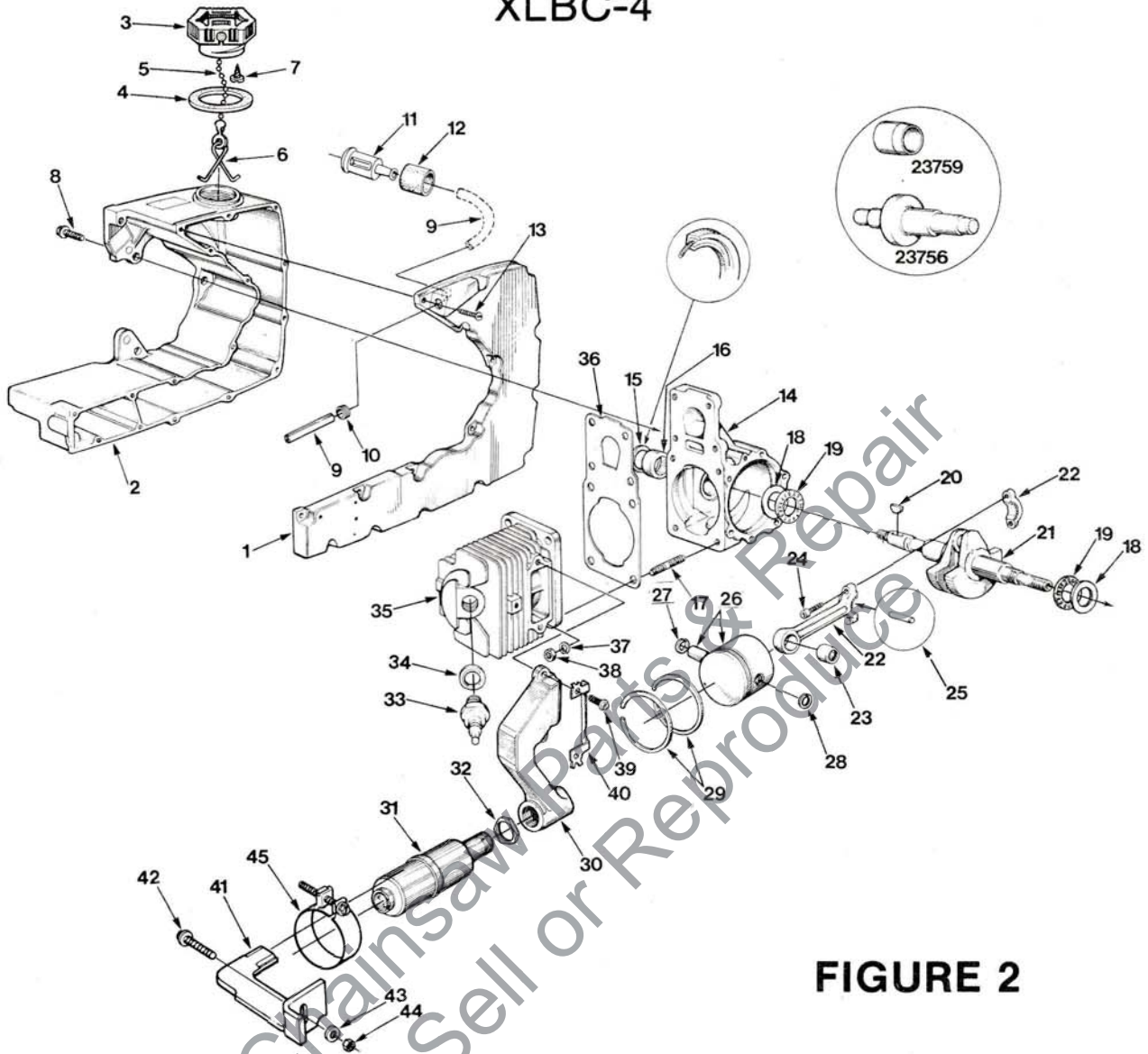


FIGURE 2

No.	Description	Part No.	Qty.
1	COVER- Fuel tank	68141-2A	1
2	TANK- Fuel & oil	A-68396	1
	Includes:		
3	CAP- Fuel filler	A-69500	1
4	GASKET	69501	1
5	CHAIN BEAD	69502	1
6	RETAINER	69503	1
7	SCREW- Pan head (#6 x 1/4)	82256	1
8	SCREW- Hex, 1/4-20 x 3/4	63407	3
9	FUEL LINE- Flexible	70310-37	1
10	GROMMET	68046	1
11	FILTER ASSEMBLY	A-69923	1
	Includes:		
12	FILTER	64083	1
13	SCREW- Rd. hd. #6 x 1/2	80513	16
14	CRANKCASE	A-65736	1
	Includes:		
15	SEAL	12282-A	1
16	BEARING	58956	1
17	STUD	55871	4
18	RACE- Thrust bearing	58725	2
19	BEARING- Needle thrust	58726	2
20	KEY- Woodruff	75078	1
21	CRANKSHAFT	63497-1	1
22	CONNECTING ROD	A-63477-B	1
	Includes:		
23	BEARING- Needle	58724	1
24	SCREW- Soc. hd., #8-32 x 1/2	69919	2

No.	Description	Part No.	Qty.
25	ROLLERS- Set (31)	A-69054	1
26	PISTON & PIN	A-58903-C	1
	Includes:		
27	RING- Retaining	75120	1
28	RING- Retaining	64813	1
29	RING- Piston	58877	2
30	MANIFOLD	65401-1	1
31	MUFFLER	59397-2	1
32	NUT- Lock	59510	1
33	SPARK PLUG	63547-S	1
	Includes:		
34	GASKET	25038	1
35	CYLINDER	A-69715	1
	Includes:		
36	GASKET, Cylinder	58513	1
37	WASHER- Lock, 1/4	83009	4
38	NUT- 1/4-28	81065-2	4
39	SCREW- Hex, #12-24 x 3/4	82189	2
40	BRACKET- Locking	64116-1	1
41	BRACKET- Muffler	42262-1	1
42	SCREW- Hex. hd. #10-24 x 1 1/8	82218	1
43	WASHER- Flat #10	84003-1	1
44	NUT- Lock #10-24	81208	1
45	CLAMP- Muffler	42263	1
	GASKET- Fuel tank (not shown)	65642	1

XLBC-4

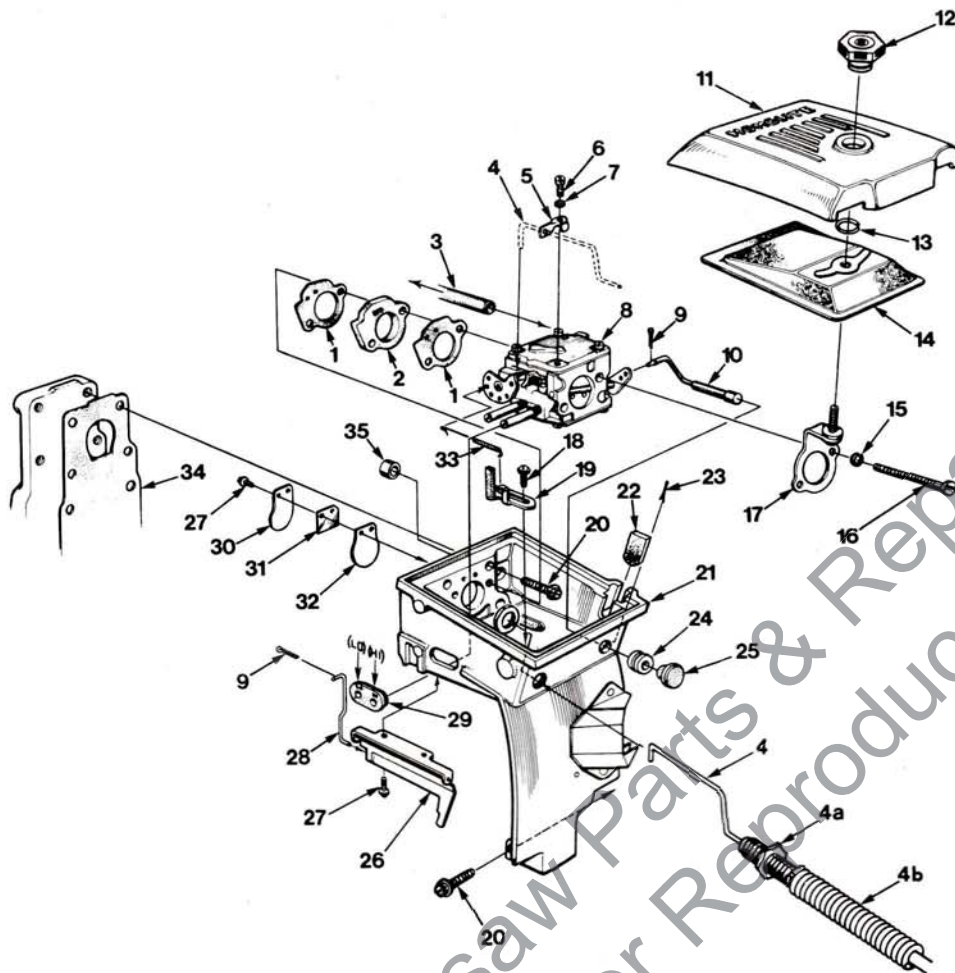


FIGURE 3

No.	Description	Part No.	Qty.	No.	Description	Part No.	Qty.
1	GASKET- Carburetor	58537-A	2	18	SCREW- Pan hd., #8-32 x 1/4	80575	2
2	SPACER- Carburetor	58780	1	19	PLATE- Speed adjusting	A-59299	1
3	FUEL LINE- Flexible	70310-37	1	20	SCREW- Hex., #12-24 x 7/8	80891	5
4	CONTROL- Throttle	A-42483	1	21	CHAMBER- Carburetor	A-65617-A	1
	Includes:				Includes:		
4a	NUT- Throttle conf.	51244	2	22	PLUG- Felt	59329	1
4b	SPRING- Helical	42482	1	23	PIN- Cotter	86301	1
5	GUIDE- Throttle rod	65417-A	1	24	GROMMET	58362	1
6	SCREW- Fil. hd., #6-32 x 1/2	80151	1	25	BUTTON	57289-1	1
7	WASHER- Lock, #6	83004-1	1	26	GOVERNOR- Air vane	A-59301-A	1
8	CARBURETOR	A-50670	1	27	SCREW- Pan hd., #4-40 x 3/16	80658	4
9	COTTER PIN	86324	2	28	LINK- Governor	59260	1
10	ROD- Choke	A-58826	1	29	GROMMET- "Lo-Hi"	59058	1
11	COVER- Air filter	A-70758	1	30	STOP- Reed	58776	1
12	NUT- Cover	A-65272	1	31	SPRING- Reed	59053	1
13	RING- Retaining	58319-A	1	32	REED	58775	1
14	ELEMENT- Air filter	63589-A	1	33	SPRING- Governor	59242	1
15	WASHER- Lock	83046	2	34	GASKET	58513	1
16	SCREW- Hex. #10-32 x 2 1/4	80481	2	35	GROMMET	68279	1
17	BRACKET- Filter cover	A-58818-A	1				

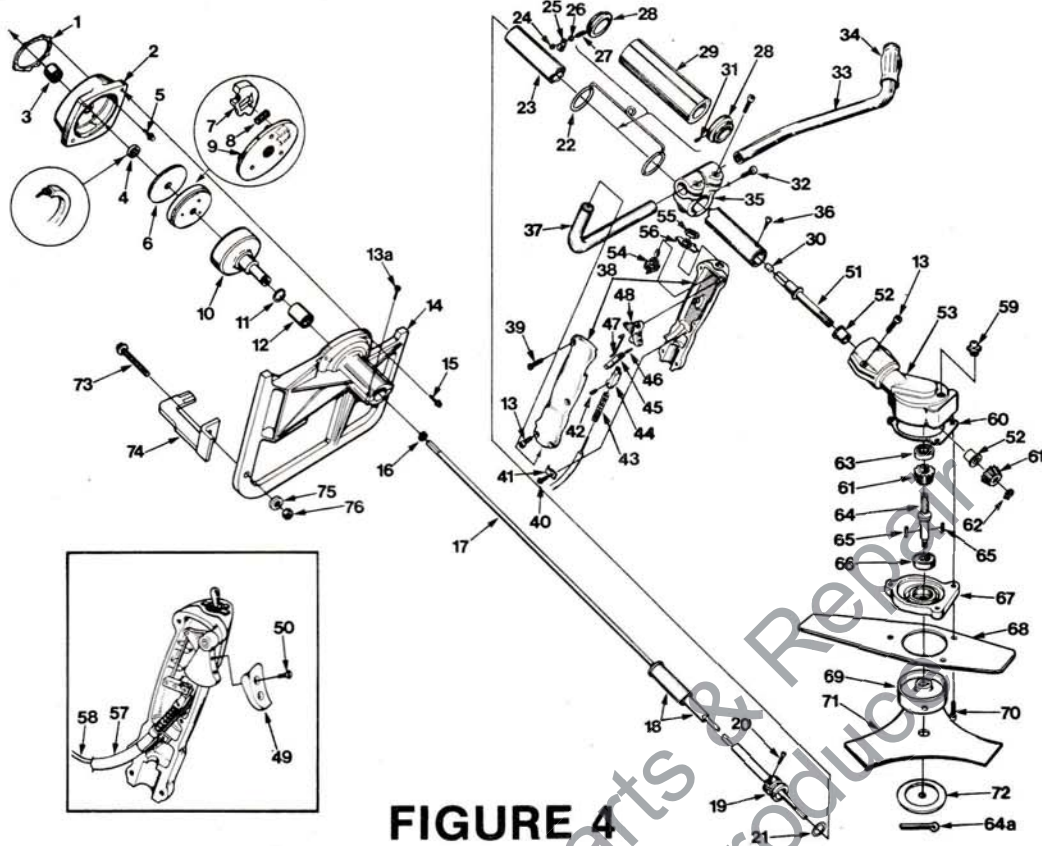


FIGURE 4

No.	Description	Part No.	Qty.	No.	Description	Part No.	Qty.
1	GASKET- C/case	63355	1	40	SCREW- Pan hd., 6-32 x 5/16	80605	1
2	DRIVECASE	A-65397-1	1	41	CLAMP- Cable	59305	1
3	Includes:			42	SCREW- Set, 4-40 x 1/8	80893	1
4	BEARING	58956	1	43	SPRING- Return	59497	1
5	SEAL	12282-A	1	44	CONNECTOR- Cable	59304-1	1
5	SCREW- Hex., #12-24 x 9/16	80899	5	45	LEVER- Throttle	59303	1
	CLUTCH ASSEMBLY	A-69480-B	1	46	PIN- Linkage	59308	1
	Includes:			47	LINK- Throttle	59302	1
6	COVER- Clutch	63051	2	48	TRIGGER- Throttle	A-65406	1
7	SHOE- Clutch	69461	3		Includes:		
8	SPRING- Clutch	67053	3	49	PAD- Trigger	65407-1	1
9	PLATE- Clutch back	65760-1B	1	50	SCREW- Flat hd., 4-36 x 3/16	82141	2
10	DRUM & HUB	A-65416	1	51	SHAFT- Gear	A-57913	2
11	RING- Retaining	28922	1	52	BEARING	57918	2
12	BEARING- Ball	56219-S	1	53	HEAD- Lower	57849-3	1
13	SCREW- Soc. hd. 1/4-20 x 3/4	80373-1	4	54	SWITCH- Grounding	A-57650-3A	1
13a	SCREW- Soc. hd. 1/4-20 x 1	80428	2		Includes:		
14	HEAD- Upper	63755-3	1	55	NUT- Hex	72084-A1	1
15	SCREW- Hex., #1/4-20 x 13/16	80573	4	56	PLATE- "On-Off"	70839	1
16	Ring Retaining	59029	1	57	COVER- Cable	42563	1
17	DRIVESHAFT	63764	1	58	GROUND- Lead	A-51243	1
18	CASING- Shaft	A-67054	1	59	FITTING- Grease	32409	1
	Includes:			60	GASKET	57946	1
19	BUSHING- Split	63349	1	61	GEAR- Bevel	57847	2
20	SCREW- Soc., 5-40 x 3/8	80960	1	62	RING- Retaining	57925	1
21	"O" RING	63350	1	63	BEARING- Ball	57928-S	1
22	HANGER	50695	1	64	SHAFT- Blade	A-50892	1
23	TUBE	57909	1		Includes:		
24	NUT- Lock hex., 10-32	81206	1	64a	PIN- Cotter 1/8 x 1 1/4	86304	1
25	CLIP- Throttle cable	59320	1	65	KEY	55225-1A	2
26	NUT- Hex., 10-32	81010-1	1	66	BEARING- Ball	72040-S	1
27	SCREW- Soc. hd., 10-32 x 7/8	80909	1	67	HOUSING- Bearing	57850-3	1
28	COLLAR- Hanger	55844-1	2	68	GUARD- Blade	57863-2	1
29	BUMPER- Sleeve	50603	1	69	HEAD- Spindle	58076-1	1
30	BUMPER	65414	1	70	SCREW- Soc., hd., 1/4-20 x 1	80428-1	3
31	SCREW- Soc. hd., 10-32 x 3/8	80514	1	71	BLADE	50685	1
32	SCREW- Soc. hd., 5/16-18 x 1	80308	3	72	NUT- Blade shaft	56178-4	4
33	HANDLE- Left	57862-1	1	73	SCREW	82218	1
34	GRIP- Handle	59275	1	74	BRACKET- Muffler	42262-1	1
35	CLAMP- Handle	55398-3	1	75	NUT- Lock #10-24	81208	1
36	SCREW- Rd. hd., #8-1/4	80853	1	76	WASHER- Flat #10	84003-1	1
37	HANDLE- Right	59350-2	1		HARNES- (not shown)	A-50730-B	1
38	GRIP- Throttle w/pins	A-59502-A	1		Includes:		
	Includes:				T PLATE & SNAP HOOK	42218	1
39	SCREW- Pan hd., 8-32 x 5/8	80582	2				

XLBC-4

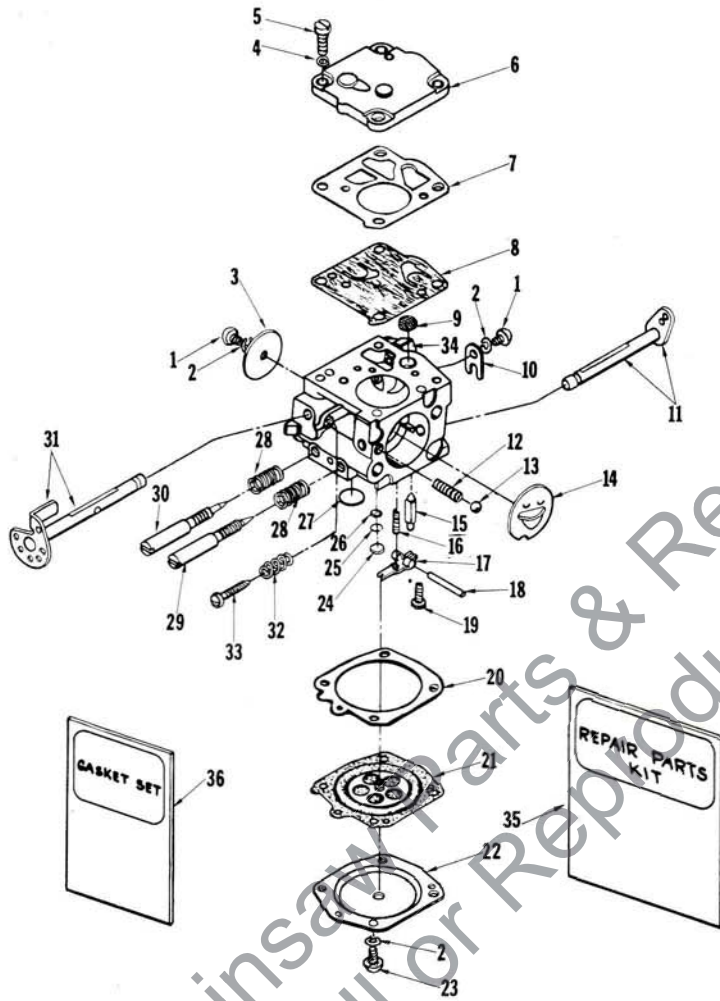


FIGURE 5

No.	Description	Part No.	Qty.
1	SCREW- 4-40 x 3/16	80264	2
2	WASHER- #4	83008-1	6
3	THROTTLE SHUTTER	25050	1
4	WASHER- #6	83024	4
5	SCREW- 6-32 x 3/8	80275	4
6	COVER- Pump	58975	1
7	GASKET- Fuel pump	58981	1
8	DIAPHRAGM- Fuel pump	58980-R	1
9	SCREEN	58974	1
10	CLIP- Throttle shaft	58982	1
11	CHOKE SHAFT WITH LEVER	58990	1
12	SPRING- Choke friction	73264	1
13	BALL- Choke friction	25527	1
14	SHUTTER- Choke	58984	1
15	NEEDLE- Inlet	59717	1
16	SPRING- Inlet tension	55759	1
17	LEVER- Inlet control	59716	1
18	PIN- Fulcrum	58977	1

No.	Description	Part No.	Qty.
19	SCREW- 4-40 x 5/16	58992	1
20	GASKET- Diaphragm	58978	1
21	DIAPHRAGM- Main	58988	1
22	COVER- Diaphragm	58979	1
23	SCREW- 4-40 x 1/4	80591	4
24	PLUG- Welch, 7/32	58994	1
25	RING- Retaining	57819	1
26	SCREEN- Channel	59500	1
27	PLUG- Welch, 11/32	58991	1
28	SPRING- Adjusting screw	73075	2
29	NEEDLE- Main adjusting	58986	1
30	NEEDLE- Idle adjusting	58985	1
31	THROTTLE SHAFT & LEVER	58989	1
32	SPRING- Idle speed	58973	1
33	SCREW- Idle stop	58993	1
34	FITTING- Inlet elbow	69365	1
35	REPAIR KIT	67869	1
36	GASKET SET	67866	1

TOOLS AND ACCESSORIES

STRAP- Shoulder	57951	
ATTACHMENT- Grass trimming	A-63252	
Includes:		
GUARD	55907-2	
FOOT	55908-2	
SCREW- Hex hd., 1/4-20 x 3/4	80218-1	(4)
WASHER- Flat, 1/4	84004-1	(4)
WASHER- Lock, 1/4	83009	(4)
BLADE	55909	
WRENCH- Socket	68651	
WRENCH- Combination	A-22808	
SLEEVE- C/shaft seal	23759	
PLUG- Needle bearing	23756	
WRENCH- Socket screw	23528	
ROD- Locking	22963	
KEY- Hex	22061	
KEY- Hex	23605	
PLIERS- Retaining ring	22828	
PLUG- Needle bearing	23757	
PLUG- Seal	23758	
WRENCH- Spanner (clutch)	A-23934	
Includes:		
PIN	23954	
PULLER- Rotor	A-23960	
SLEEVE- Seal	23800	
BLADE- Saw (Optional)	55455	

Leon's Chainsaw Parts & Repair
Do Not Sell or Reproduce

HOMELITE®
CONSTRUCTION & INDUSTRIAL EQUIPMENT

14401 Carowinds Blvd. • P.O. BOX 7047 • Charlotte, North Carolina 28217

Leon's Chainsaw Parts & Repair
Do Not Sell or Reproduce