

HOMELITE
JACOBSEN

TM

PART NO. 17118 REV. 4

PRINTED IN U.S.A.

PRICE 35¢

PARTS LIST

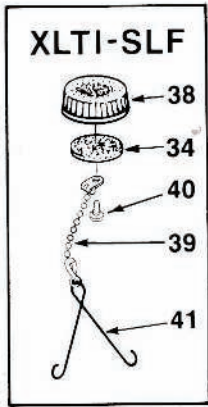
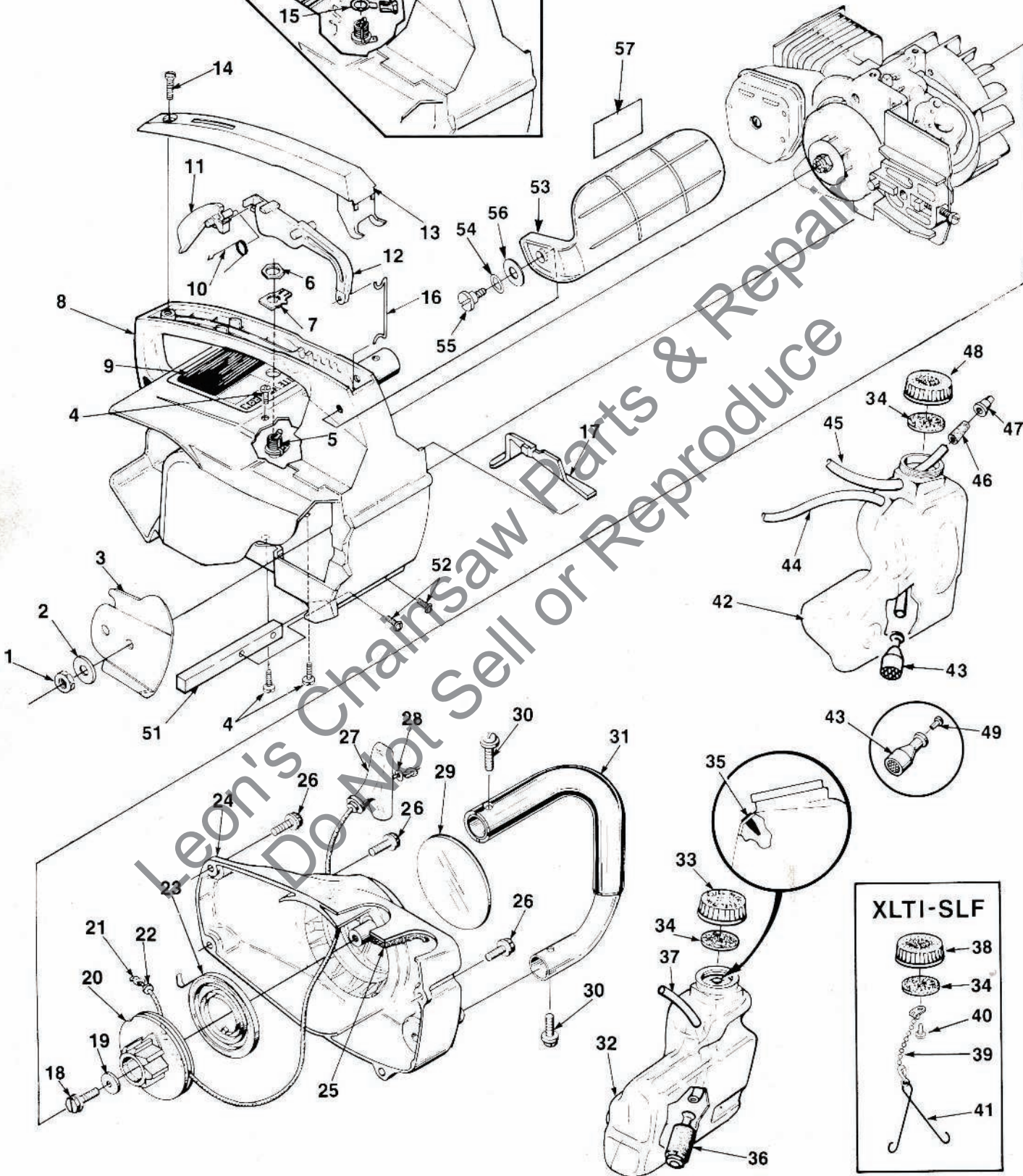
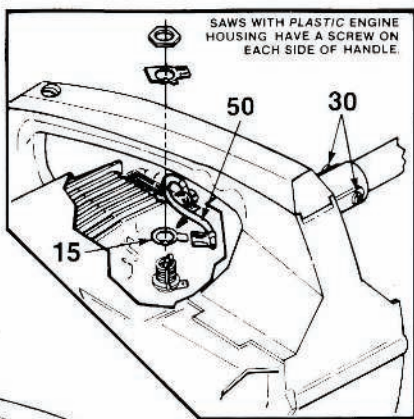


XL[®] THROTTLE
INTERLOCK

MAGNESIUM HOUSING
PLASTIC HOUSING

Automatic Oiling
CHAIN SAW

XL-TI
FIGURE 1



XL-TI PLASTIC HOUSING
XL-TI MAGNESIUM HOUSING
XL-TI SL

XL-TI PLASTIC HOUSING
XL-TI MAGNESIUM HOUSING
XL-TI SL

NO.	DESCRIPTION	PART NO.	QTY.
1	NUT- Guide bar 5/16-18	81162	x x x 1
2	WASHER- 5/16	84032	x x x 1
3	PLATE- Guide bar	69360-1	x x x 1
4	SCREW- Pan hd. 10-24 x 1/2	96620	x x x 4
5	SWITCH- Stop (Note 1)	93653	x x 1
	SWITCH- Stop (Grounding)	A-63938	x 1
	Includes:		
6	NUT- Hex	72084-A1	x x x 1
7	PLATE- "On-Off"	70834	x x x 1
8	HOUSING- Engine	A-69944-D	x 1
	HOUSING- Engine	A-95683	x x 1
	Includes:		
9	PLATE- Starting instructions	70835	x x x 1
	HOUSING- Engine (XLTI-SLF)	A-95617-4	x 1
	KIT- Throttle lock (Note 2)	A-94755	x x x 1
	Includes:		
10	SPRING- Torsion	93090	x x x 1
11	LOCK- Throttle	93091-B	x x x 1
12	TRIGGER- Throttle	94729	x x x 1
13	COVER- Handle	93087	x x x 1
14	SCREW- Pan hd. 10 x 5/8	82312	x x 1
	10-32 x 5/8	82239	x 1
15	CONTACT- Ground	96417	x x 1
16	ROD- Throttle (Front)	69255-C	x x x 1
17	COVER- Air filter	69263	x x x 1
18	SCREW- Hex washer hd. (10-32 x 5/8) (Note 7)	70771	x x 1
	SCREW	80704	x 1
19	WASHER- Flat	94062	x x x 1
20	PULLEY- Starter	69158-A	x x x 1
21	ROPE- Starter #4, 34" long	A-93874-A	x x x 1
	Includes:		
22	WASHER- Nylon	93862	x x x 1
23	SPRING & CONTAINER (After lot #0003)	A-95233-A	x x 1
	SPRING- Rewind	69217	x 1
24	HOUSING- Rewind starter	A-69540	x 1
	HOUSING- Rewind starter	A-95630	x x 1
25	FILTER- Fuel tank valve	69443	x x x 1
26	SCREW- Hex 10-32 x 5/8 (Note 7)	80704	x 4
	SCREW	70211	x x x 1
27	GRIP- Starter rope	84025	x x x 1
28	WASHER- Flat	69887	x x x 1
29	DECAL- XL		
30	SCREW- Pan washer hd. 10-32 x 5/8	82239	x 2
	SCREW- Pan hd. #8 x 1/2	94065	x x 4
31	HANDLE BAR	A-70219-A	x 1
	HANDLE BAR	94508	x x 1
32	TANK- Fuel	A-70899-B	x x x 1
	Includes:		
33	CAP- Tank fuel (Note 3)	A-97228	x x x 1
	Includes:		
34	GASKET- Fuel filler cap (Note 4)	94494	x x x 1
35	VALVE- Check (Duckbill)	69451	x x x 1
36	FILTER- Fuel	96639	x x x 1
37	LINE- Fuel 7 1/4"	70310-29	x x x 1
38	CAP- Tank (red) (XLTI-SFL only)	A-97230	x x x 1
	Includes:		

NO.	DESCRIPTION	PART NO.	QTY.
39	CHAIN- Bead	69502	1
40	SCREW	82256-A	1
41	CLAMP	96535	1
	GASKET- Fill cap (see index #34)	94494	1
42	TANK- Oil	A-70898-A	x x x 1
	Includes:		
43	FILTER- Oil (Pressurized oiler)	A-78889	x x x 1
	FILTER- Oil (Diaphragm oiler)	A-68593	x x x 1
44	LINE- Oil (Note 5) 6"	70309-24	x x x 1
45	LINE- Pressure (Note 6)	A-69358-B	x x x 1
	Includes:		
46	CONNECTOR- Oil	69659-B	x x x 1
47	VALVE- Check (Duck bill)	69451	x x x 1
48	CAP- Tank (oil) (Black) Note 3	A-97359	x x x 1
	Includes:		
	GASKET- Filler cap (see #34) (Note 4)	94494	x x x 1
49	PLUG- Oil metering (Pressurized oiler)	93703-B	x x x 1
50	LEAD- Ground switch	A-93717	x x 1
51	STOP- Chain	94308	x x x 1
52	SCREW- 8-32 x 1/2	80560	x x x 2
53	HAND GUARD KIT (Note 8)	A-70796-C	x x 1
	Includes:		
54	WASHER- Curved spring	95694	x x 1
55	SCREW- Shoulder 10-32 (Mag. hsg.)	95713	x 1
	SCREW- Shoulder (plastic hsg.)	95714	x 1
56	WASHER- Flat	96102	x x 1
57	DECAL	96990	x x 1

NOTE 1: 93653 switch does not include 72084-A1 nut.

NOTE 2: Early XL-TI units used 69874-B trigger with A-94755 lock.

NOTE 3: Tanks with internal threads require A-70445 fuel cap and A-70446 oil cap. If internal threads in tank are worn, order new external threaded tank.

NOTE 4: Use 69585 gasket for caps with external threads.

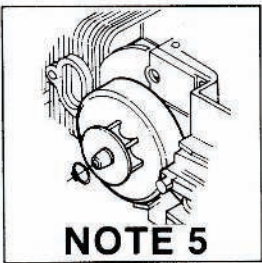
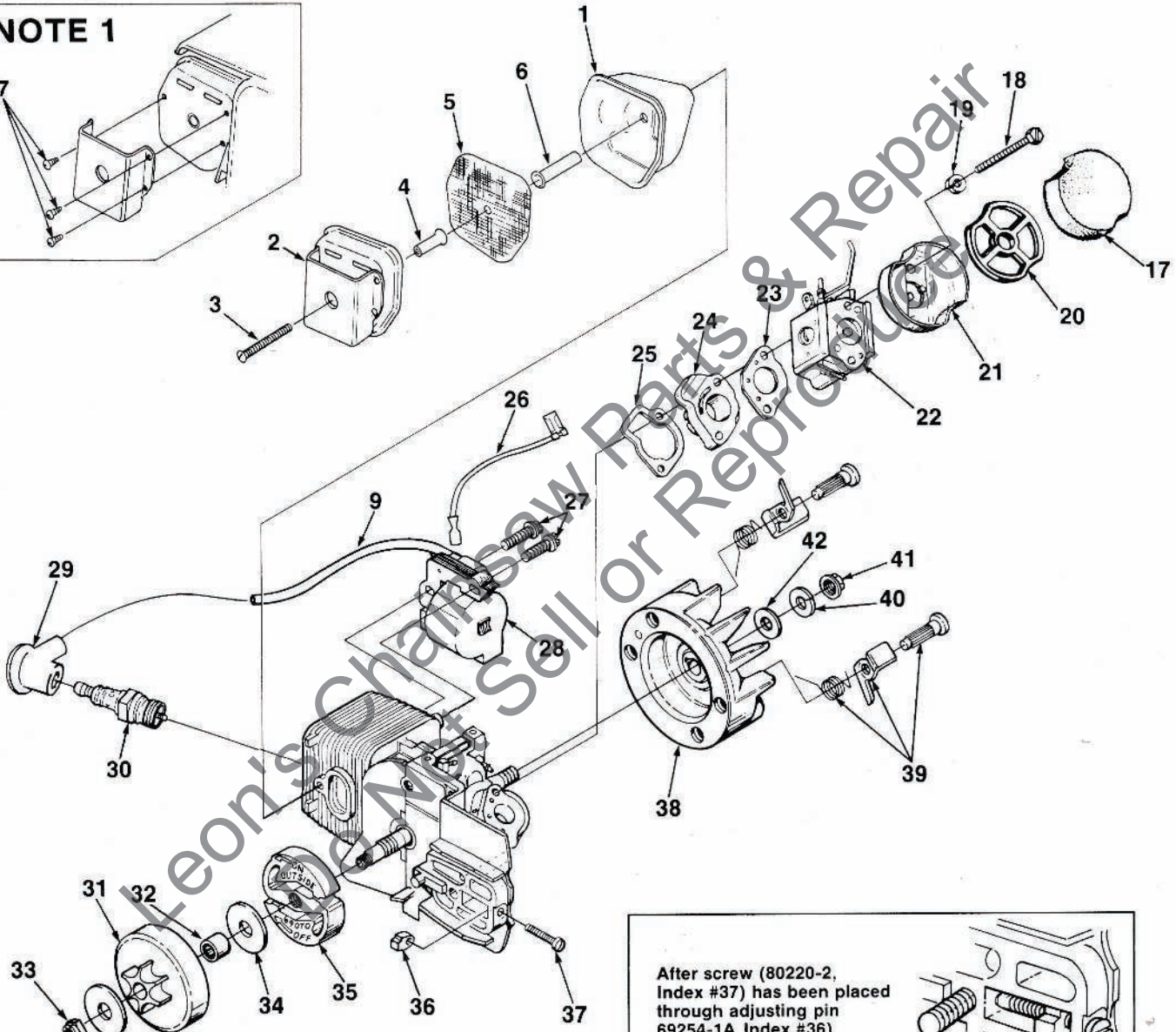
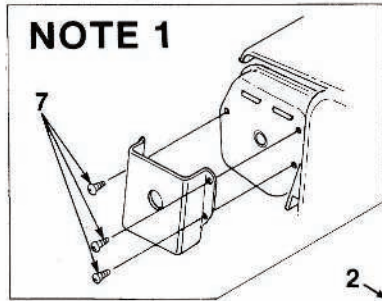
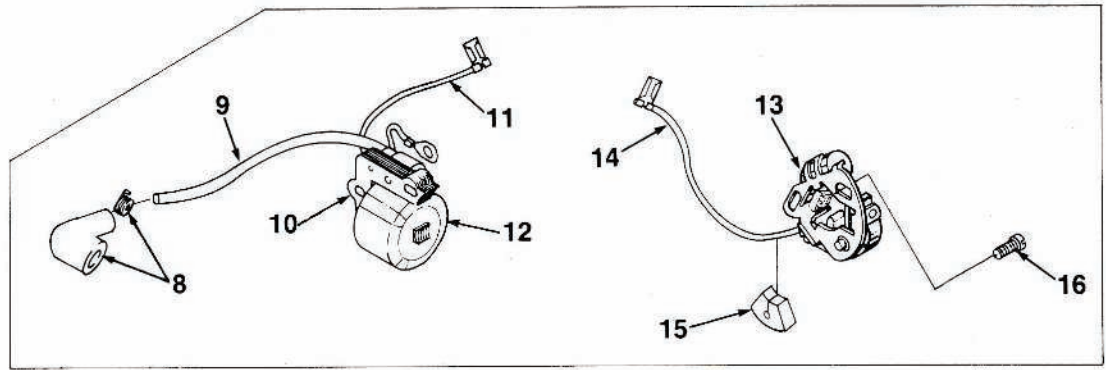
NOTE 5: Units without oiler pump use 70309-31 (7 3/4") tubing for replacement of index #44.

NOTE 6: Units without oiler pump use 70309-08 (2") tubing for replacement of index #45.

NOTE 7: If screw 70771 is stripped out of starter housing, use 94565 screw oversized as a replacement in plastic housing only.

NOTE 8: Units with steel handguard requires 70728 Belleville washer, 70748 spacer, 80572 screw 10-32 x 5/8 (mag. hsg.) or 82312 screw for plastic housing.

**XL-TI
FIGURE 2**

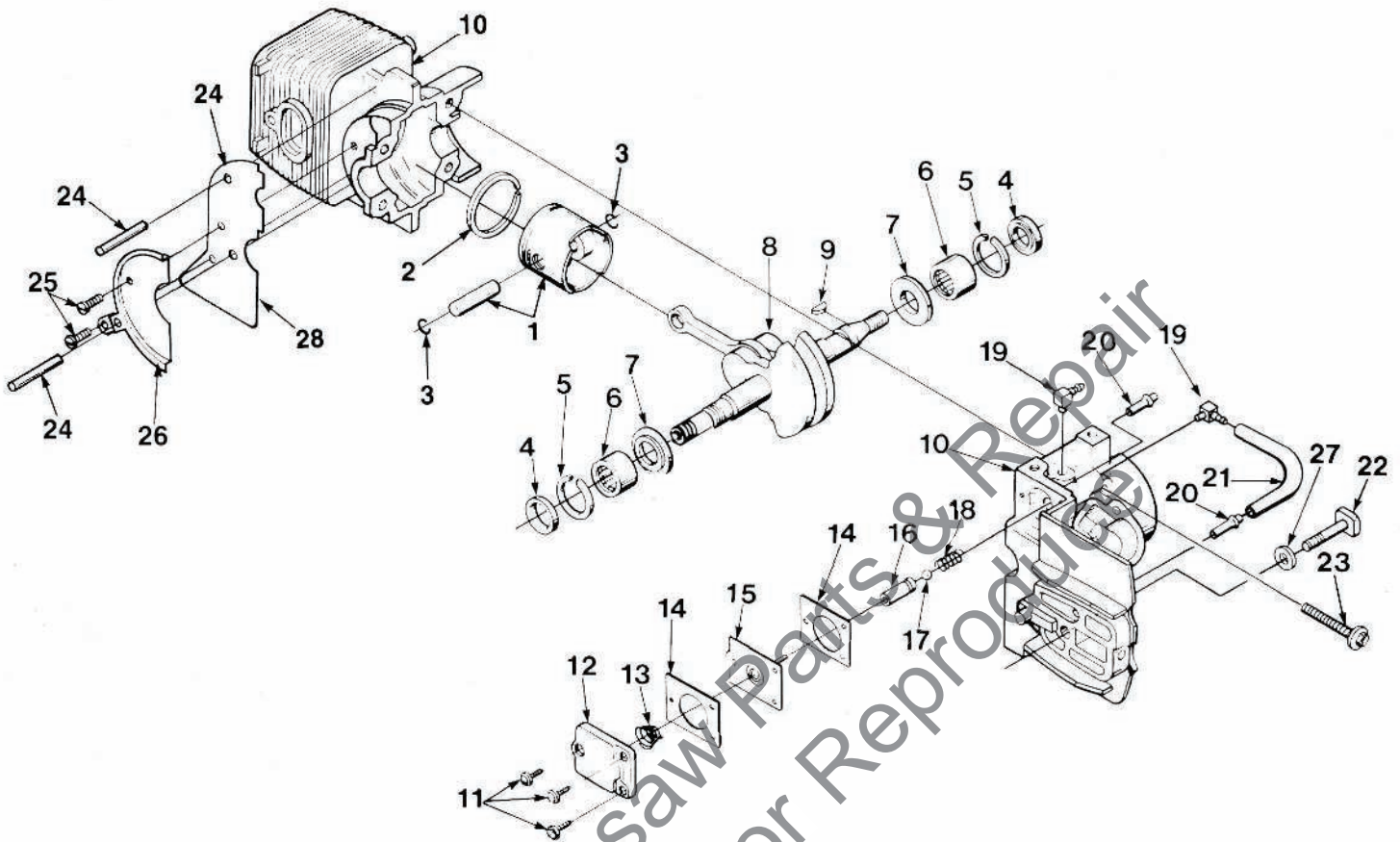


After screw (80220-2, Index #37) has been placed through adjusting pin 69254-1A Index #36) the end of the screw should be crimped. This will prevent the screw from backing out.

**XL-TI
FIGURE 2**

NO.	DESCRIPTION	PART NO.	QTY.	NO.	DESCRIPTION	PART NO.	QTY.
	MUFFLER ASSEMBLY (Complete)	A-94051-B	1	30	SPARK PLUG- Champion DJ-7J	68616-S	1
	Includes:			31	SPROCKET & Drum (Standard)		
1	BODY - Muffler	93986	1		(6 tooth 37 and 375 chain)	A-95653-A	1
2	CAP- Muffler (W/shield) (Note 1)	A-95428	1		SPROCKET & DRUM (Early model)		
	SPARK ARRESTOR	A-94139	1		(9 tooth .25 pitch)	A-69587-A	1
	Includes:				Includes:		
3	SCREW	82320	1	32	BEARING- Needle	68512	1
4	SPACER (Short)	93989	1	33	NUT- Locking 5/16-24 (Note 5)	81112	1
5	SCREEN- Spark arrestor	D-93991	1	34	WASHER- Thrust (Clutch)	95299	2
6	SPACER- (Long)	93990	1	35	CLUTCH- "S"	A-70351-A	1
	BAFFLE- Muffler (XLTISL-F only)			36	PIN- Adjusting (see insert)	69254-1A	1
	Not shown (See Note 6)	48161	1	37	SCREW- Adjusting (Fil. hd. 8-32 x 1)		
7	SCREW- #4 x .250 (Note 1)	82342	3		(See insert)	80220-2	1
8	TERMINAL- Spark plug	A-33055	1	38	ROTOR & STARTER PAWL		
9	LEAD- High tension (Note 2)	69326	1		(Solid State) (Phelon)	A-95007	1
10	CORE- Coil (Point ignition)	69324	1		ROTOR & STARTER PAWL		
11	LEAD- Stop switch (Point ignition)	A-95051	1		(Point ignition) (Phelon)	A-69297-C	1
12	COIL- Ignition (Point ignition)	69323	1		Includes:		
	RETAINER- Coil (Point ignition)			39	KIT- Starter pawl (Note 4)	A-70285-D	1
	(Not shown)	69325	1	40	WASHER- Lock	83002	1
13	POINT SET- Breaker (Point ignition)	A-69336	1	41	NUT- Rotor 5/16-24	81117	1
	Includes:			42	WASHER- Flat	84065	1
14	LEAD- Electrical	70249	1				
15	SEAL- Lead (Point ignition)	69247	1		NOTE 1: Units with separate shield requires index #7 screws. All new muffler caps A-95428 includes a shield welded to cap.		
16	SCREW- Point set (Point ignition)	88026	2		NOTE 2: For Solid State Ignition, cut wire to 6 1/2".		
17	FILTER- Air	69141	1		NOTE 3: Use A-33055 for service replacement.		
18	SCREW- Hex hd. 10-32 x 2 1/4	80481	2		NOTE 4: Replacement Starter pawl kit, item #39 includes an oversized pin. Paint, stamp or mark to identify when installing. Oversized pin can be installed tightly only once. If oversized pin is removed, the entire rotor assembly must be replaced.		
19	WASHER- Lock #10	83006	2		NOTE 5: Retaining ring 93972 required for crankshafts without threaded clutch ends.		
20	RETAINER- Air filter	69457	1		NOTE 6: Use 48161 muffler baffle in place of spark arrestor screen D-93991 for the XLTI-SLF only.		
21	CUP- Air filter	69148	1				
22	CARBURETOR- HDC-65 (Walbro)	A-94649-A	1				
	CARBURETOR- C2S-H5 (ZAMA)	A-96481	1				
23	GASKET- Carburetor	65016	1				
24	MANIFOLD- Intake	A-69373-B	1				
25	GASKET- Intake manifold	69143	1				
26	LEAD- Ground (Solid State)	A-94721	1				
27	SCREW- Hex w/washer 8-32 x 3/4	82248	2				
28	MODULE- Ignition (Solid State)	94711	1				
	MODULE- Ignition (Alternate source)	94711-1	1				
	Includes:						
	LEAD- High tension (see index #9)	69326	1				
29	TERMINAL- Spark plug						
	(Solid State) (Note 3)		1				

XL-TI
FIGURE 3



NO.	DESCRIPTION	PART NO.	QTY.
1	PISTON & PIN (XLTI-SLF)	A-97586	1
	PISTON & PIN	A-69393	1
	Includes:		
2	PISTON RING (See Note 2)	69312	1
3	RING- Piston retaining	65261	2
4	SEAL	94638	2
5	SPACER- Seal	69407	2
6	BEARING- Needle	12530	2
	BEARING- Needle (Alternate)	68513	2
7	WASHER- Thrust	69093-B	2
8	CRANKSHAFT- (Solid State)	A-94992	1
	CRANKSHAFT- (Point Ignition)	A-70352-A	1
9	KEY- Magneto (see above)	69250	1
10	CYLINDER & CRANKCASE	A-95096-A	1
	(XLTI-SL & XLTI-SLF only)		
	CYLINDER & CRANKCASE	A-95071-A	1
	(Solid State)		
	CYLINDER & CRANKCASE	A-69421-B	1
	(Point Ignition)		
	Includes:		
11	SCREW- Pan hd., 6-32 x 3/8	80571	3
12	COVER- Oil pump	69224-1C	1

NO.	DESCRIPTION	PART NO.	QTY.
13	SPRING- Oil pump	69447	1
14	GASKET- Oil pump	69244-1	2
15	PLUNGER- Oil pump	A-12356-B	1
16	BODY- Oil pump	69343-1	1
17	BALL- Check valve	60051	1
18	SPRING- Check valve	68570	1
19	FITTING- Oil line	70204	2
20	FITTING- Tube	69833	2
21	LINE- Oil	70161	1
22	BOLT- Guide bar (See note 1)	69195	1
23	SCREW- Sem hex hd. 8-32 x 1	88044	4
24	PIN- Roll (SL only)	70763	2
25	SCREW- Tapping (SL only)	93932	2
26	PLATE- Retaining (SL only)	70724	1
27	WASHER- Flat	94309	1
28	SHIELD- Sawdust	69094	1

NOTE 1: XLTI required 65025 (5/16") guide bar bolts. Service Crankcase & Cylinder assembly. (Item 10) is equipped with 1/4" bolt 69195.

NOTE 2: Use 96935 Piston Ring for units with pinless piston.

WALBRO CARBURETOR

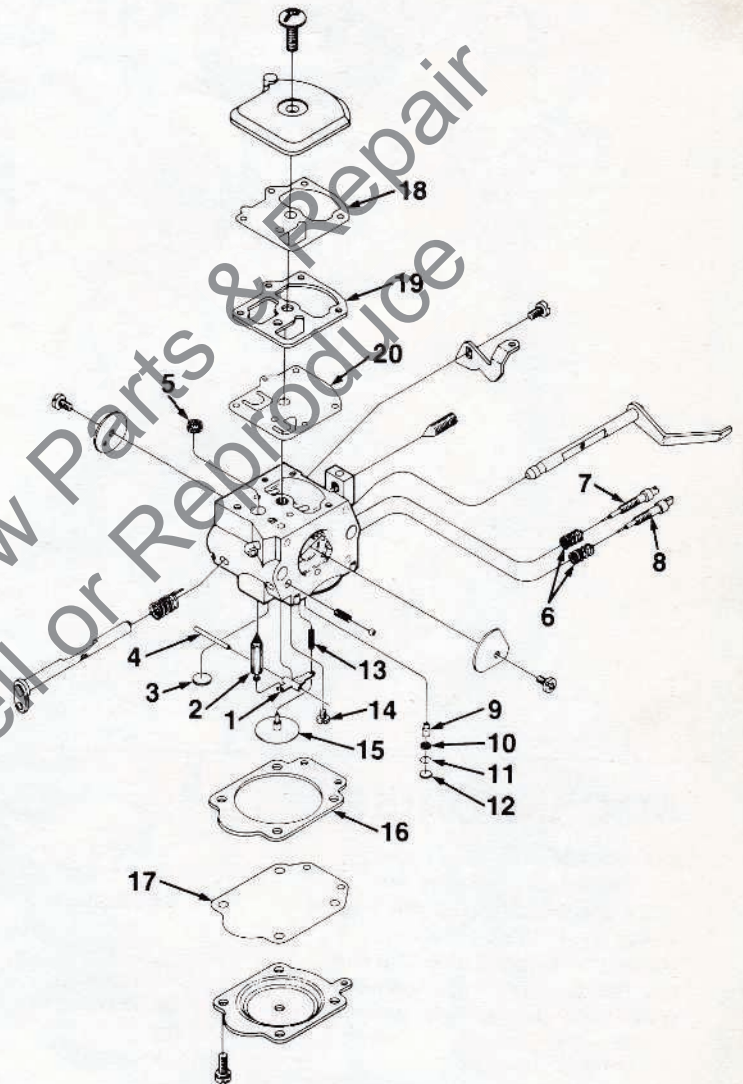
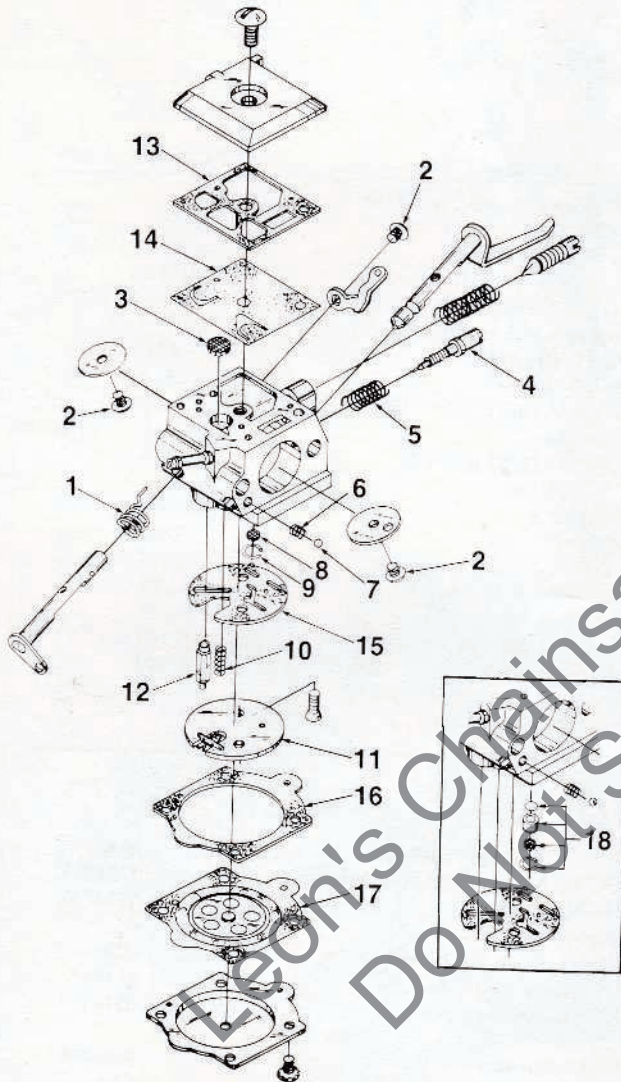
HDC-65

A-94649-A

ZAMA CARBURETOR

C2SH5

A-96481



94056
 94701
 64229
 93910-A

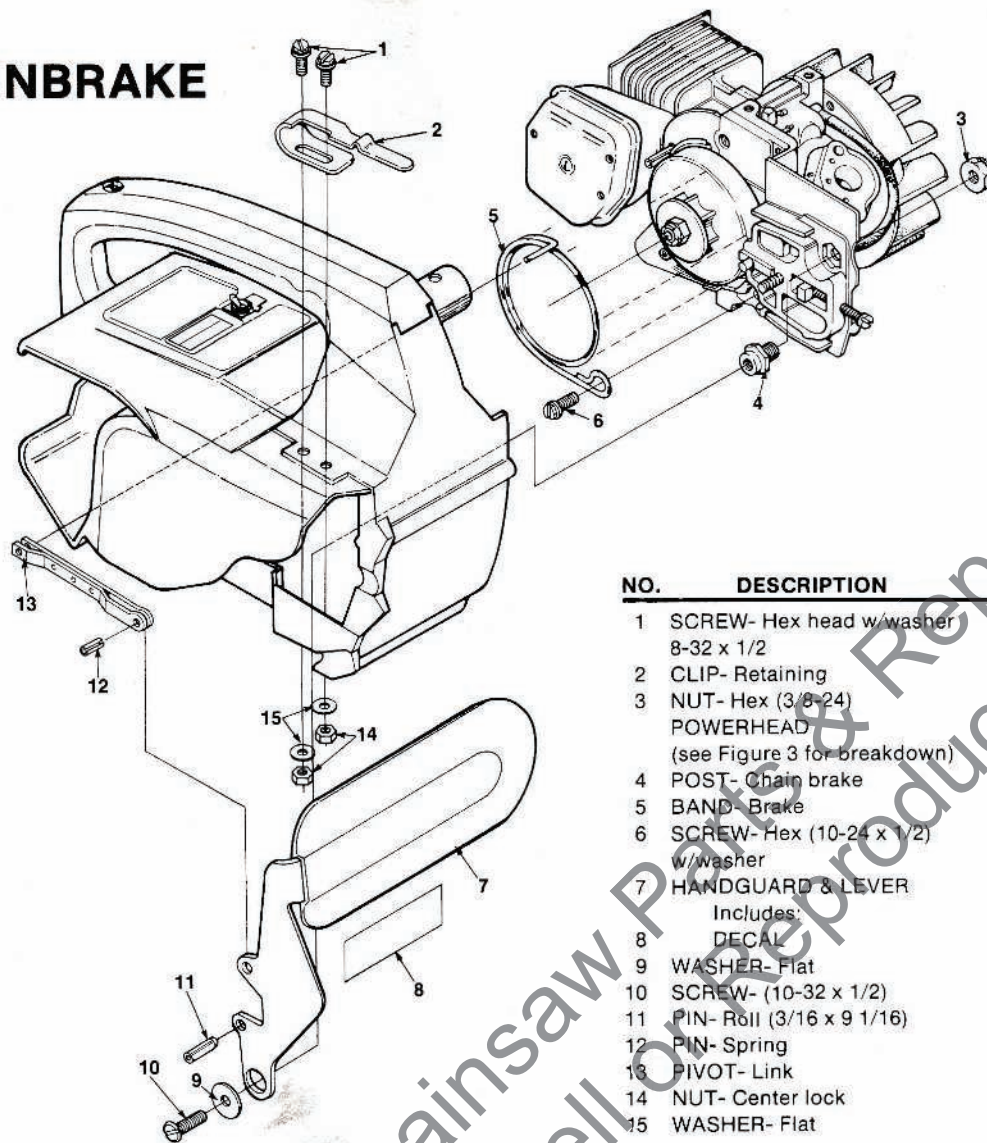
Repair Kit (Includes 1-17)
 Gasket/Diaphragm set (Includes 13-17)
 Inlet Needle (#12)
 Check valve repair kit (18)

96484
 96485

Repair Kit (Incl. 1-20)
 Gasket/Diaphragm (Inc. 16-20)

ALWAYS FURNISH MODEL AND SERIAL NUMBER WHEN ORDERING PARTS.

XL-TI CHAINBRAKE



NO.	DESCRIPTION	PART NO.	QTY.
1	SCREW- Hex head w/washer 8-32 x 1/2	80983	2
2	CLIP- Retaining	95890	1
3	NUT- Hex (3/8-24)	81192	1
	POWERHEAD (see Figure 3 for breakdown)		
4	POST- Chain brake	70636	1
5	BAND- Brake	70637-A	1
6	SCREW- Hex (10-24 x 1/2) w/washer	88049	1
7	HANDGUARD & LEVER Includes:	A-97535	1
8	DECAL	96990	1
9	WASHER- Flat	70632	1
10	SCREW- (10-32 x 1/2)	82166	1
11	PIN- Roll (3/16 x 9 1/16)	93069	1
12	PIN- Spring	95395	1
13	PIVOT- Link	A-70767	1
14	NUT- Center lock	81223	2
15	WASHER- Flat	84025	2

ACCESSORIES

GASKET- Oil pump body (repair)	69596
KIT- Repair (Sprocket nose bar)	A-70239-D
KIT- Spark arrestor (used with A-93686 Muffler and A-69253-1 Muffler)	A-69586-B
TUBING- Rubber (10 ft. length) Fuel	70310-99
TUBING- Rubber (10 ft. length) Oil	70309-99
SAFE•T•TIP (standard equipment)	DA-70776-A
Includes:	
SCREW- (Special)	93695
GREASE- Multi-use (Sprocket bearing - PT Guide bar)	17193
CASE- Carrying	94215-A
STARTING ROPE- 250 ft. reel #4	68848

TOOLS

SILASTIC- (Crankcase sealing)	24823
PLIERS- Tru-Arc (Sprocket retaining ring)	17198
PULLER- Magneto rotor	A-24747-A
Includes:	
BOLT- 5/16-18 x 1 3/4 (1)	80288
NUT- Hex 5/16-18 (2)	81196
WRENCH- Spanner (clutch)	A-93791
Includes:	
PIN- Clutch spanner (2)	23717-A
TOOL- Carburetor check valve (installation) (HDC only)	24972
WRENCH- Flat guide bar nut	24814
SHIM- Gauge (rotor air gap) .012	24306
SHIM- Gauge (Point gap) .015	22486

Homelite Division of Textron Inc.
P.O. Box 7047
14401 Carowinds Boulevard
Charlotte, N.C. 28217

HOMELITE TEXTRON

Homelite Division of Textron Inc.