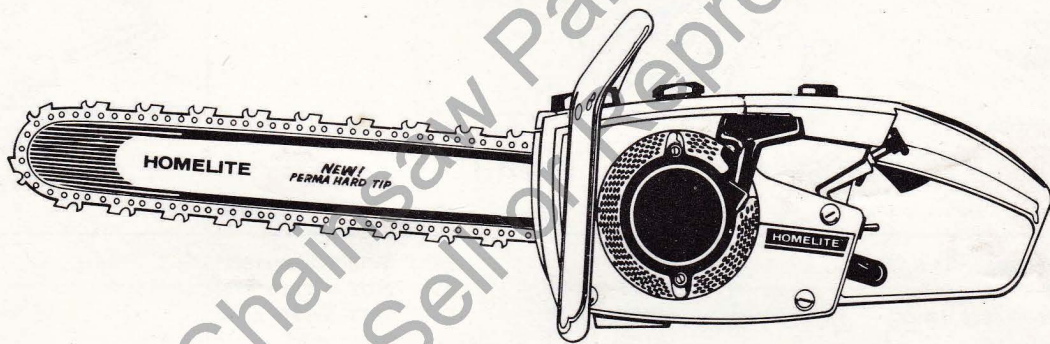


CHAIN SAW PARTS LIST

WARD & GOWER (HOOK) LTD
THE FOUNDRY,
HOOK, HANTS.

RECEIVED
28 NOV 1972

HOMELITE®



MINI MINI AUTOMATIC

MINI & MINI Automatic

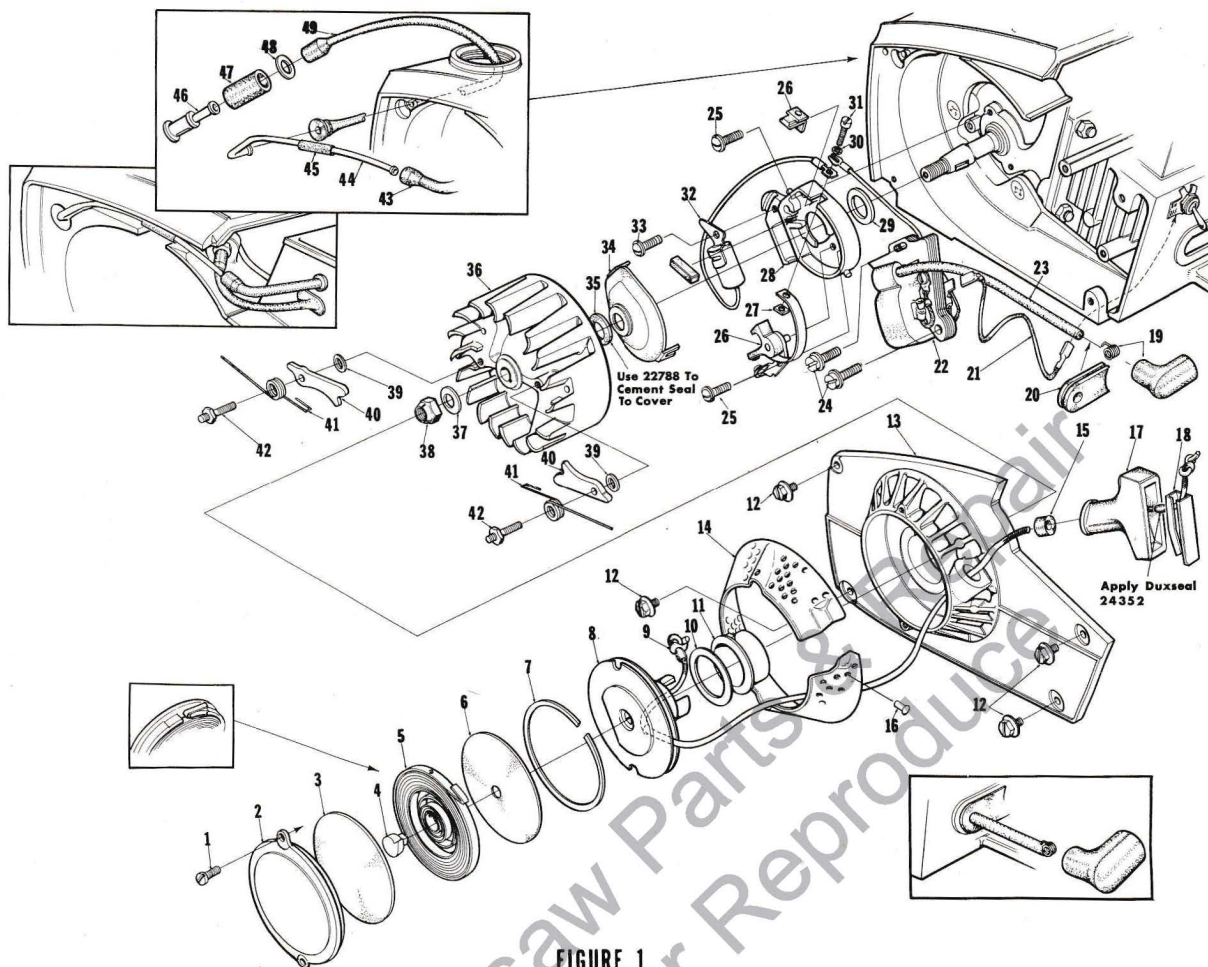


FIGURE 1

No.	Description	Part No.	Qty.	No.	Description	Part No.	Qty.
1	SCREW-pan, 8-32 x 3/8	80577	2	26	POINTS-breaker	A-65203	1
2	COVER-starter	65095-2	1	27	NUT-square	65207	1
3	SHIELD-spring (inner)	65113	1	28	BOX-breaker	65206-A	1
4	LOCK-spring	65102	1	29	SEAL-felt	65209	1
5	SPRING-rewind	65107	1	30	WASHER-lock, #6	83004-1	1
6	SHIELD-spring (outer)	65114	1	*31	SCREW-hex, 6-32 x 7/16	67628	1
7	RING-retaining	65125	1		SCREW-fil, 6-32 x 7/16	†80015	1
8	PULLEY & CUP ASSY.	A-65170	1	*32	CONDENSER	65286	1
9	ROPE-starter	65118	1		CONDENSER	†65208	1
10	SHIELD-pulley	65103	1	33	SCREW-pan, 6-32 x 1/2	80630	1
11	BUSHING-starter cup	65116	1	34	COVER-breaker box	A-65210	1
12	SCREW-hex, 10-32 x 5/8	80704	4	35	Includes: SEAL-felt	65211	1
13	HOUSING-rewind starter	A-65222-1	1	36	ROTOR-magneto	65061	1
14	Includes: SCREEN-air inlet	65189	1	37	WASHER-flat, 5/16	84065-1	1
15	BUSHING-starter rope	65185	1	38	NUT-hex, 5/16-24	81112	1
16	STUD-drive, #2	67191	3	39	WASHER-starter pawl	65110	2
17	GRIP-starter rope	65183	1	40	PAWL-starter	65108	2
18	INSERT-rope retaining	65218	1	41	SPRING-starter pawl	65120	2
19	TERMINAL-spark plug	A-65198	1	42	STUD-starter pawl	65109	2
20	GROMMET-hi-tension lead	65135	1	43	LINE-fuel	65168	1
21	LEAD-ground	A-63939	1	*44	LINE-fuel	A-65227	1
22	CORE & COIL	A-65204	1	*45	Includes: SLEEVE	65224	1
23	Includes: LEAD-hi-tension	65205	1	46	FILTER-fuel	A-63920	1
24	SCREW-coil core	64021	2	47	Includes: FILTER-felt	64083-1	1
25	SCREW-pan, 6-32 x 3/8	80571	2	48	WASHER	64182	1
				49	LINE-fuel	65169	1

Accessories

- *A-24335 Starting Rope Kit
- *A-24337 † Ignition Kit
- *A-24338 Fasteners Kit
- *A-24365 Ignition Kit

*Denotes new parts.

† Units below serial #91600198

MINI & MINI Automatic

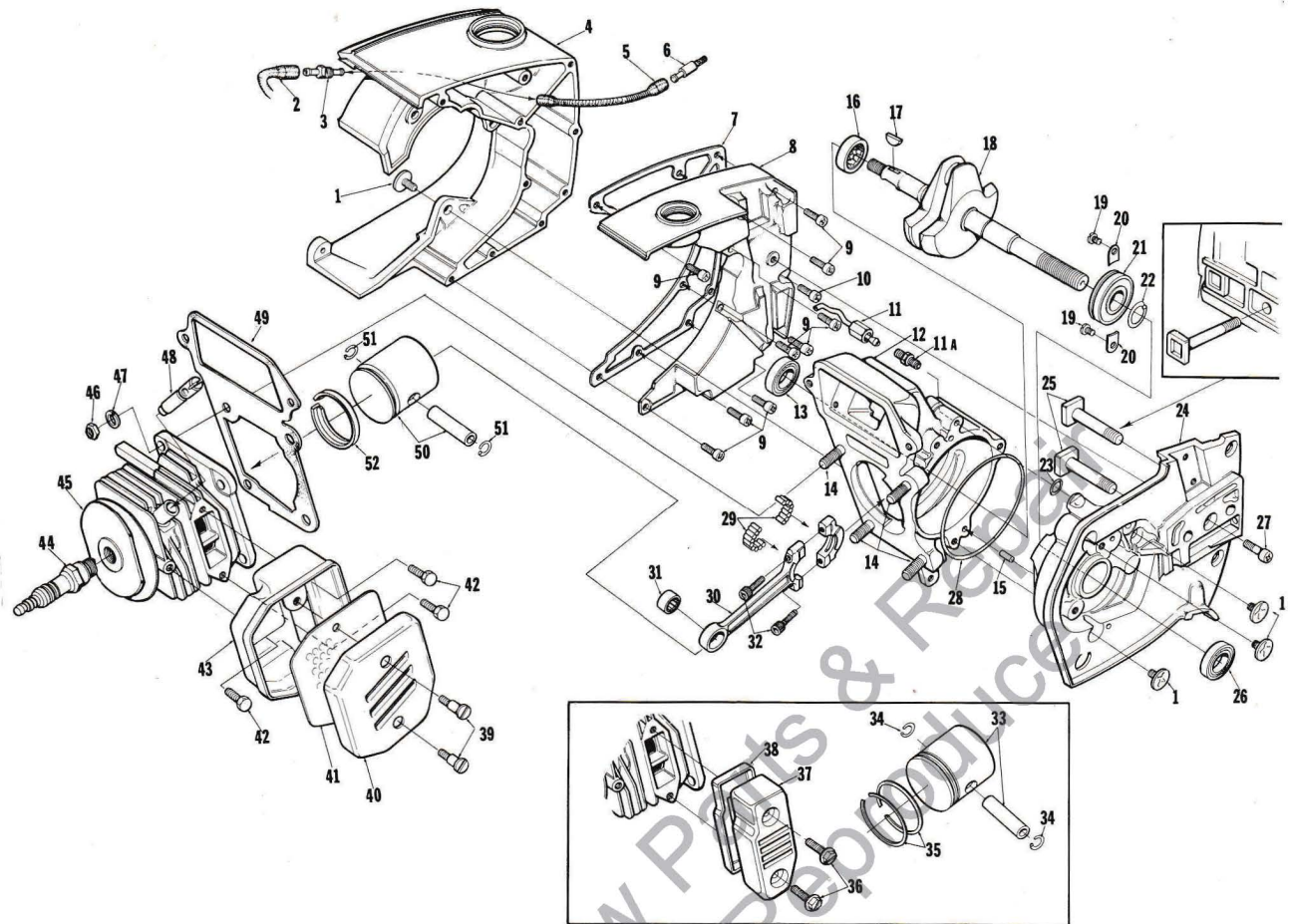


FIGURE 2

No.	Description	Part No.	Mini	Mini Auto	Qty.	No.	Description	Part No.	Mini	Mini Auto	Qty.
1	SCREW-retaining	65321	x	x	6	25	Includes: BOLT-guide bar	65025	x	x	2
2	LINE-oil	65137	x	x	1	26	SEAL	65019	x	x	1
3	FITTING-oil line	65138	x	x	1	27	SCREW-fil, drivecase retainer	65157	x	x	1
4	TANK-fuel and oil	65037-2	x	x	1	28	"O" RING	65127	x	x	1
5	LINE-oil (pickup)	58340-B	x	x	1	29	BEARING-needle (set of 28)	A-65009	x	x	1
	LINE-oil (pickup)	63605	x	x	1	30	ROD-connecting	A-65213	x	x	1
6	FILTER-oil	A-65172	x	x	1	31	Includes: BEARING-needle	65007	x	x	1
	FILTER-oil	A-59009	x	x	1	32	SCREW-socket, 8-32 x 1/2	80805	x	x	2
7	GASKET-fuel and oil tank	65046	x	x	1	*33	PISTON & PIN-(1 7/16" dia.)	A-65196-A	x	x	1
8	COVER-fuel and oil tank	65115-2	x	x	1	*34	Includes: RING-piston pin retaining	65261	x	x	2
	COVER-fuel and oil tank	65038-2	x	x	1	35	PISTON RING	65003	x	x	2
9	SCREW-fil, 8-32 x 5/8	82146	x	x	9	36	SCREW-hex, 10-32 x 1 3/8	82162	x	x	2
10	SCREW-fil, 8-32 x 5/16	82151	x	x	1	37	BODY-muffler	65059	x	x	1
	SCREW-fil, 8-32 x 1 1/4	82152	x	x	1	38	BASE-muffler	65058	x	x	1
11	LINE-oil	A-65214	x	x	1	39	SCREW-shoulder	†64133-A	†	x	2
*11A	CONNECTOR-straight	65269	x	x	1	40	CAP-muffler	†65066-1	†	x	1
12	CRANKCASE	A-65202	x	x	1	41	BAFFLE-muffler	†65067	†	x	1
13	Includes: SEAL	65019	x	x	1	42	SCREW-hex, 10-32 x 3/8	†80870	†	x	3
14	STUD-cylinder	55871	x	x	4	43	BODY-muffler	A-65152-1	x	x	1
15	PIN-dowel	65153	x	x	1	*	BODY-muffler	A-65275	†	x	1
16	BEARING-roller	65179	x	x	1	44	SPARK PLUG	65130-S	x	x	1
17	KEY-woodruff	65126	x	x	1	45	CYLINDER-(1 7/16" dia.)	A-65180-1	x	x	1
18	CRANKSHAFT	65006-1	x	x	1		CYLINDER-(1 1/2" dia.)	A-65036-1	x	x	1
	CRANKSHAFT	65006-2	x	x	1	46	NUT-hex, 1/4-28	81065-2	x	x	4
19	SCREW-bearing retaining	59704	x	x	2	47	WASHER-lock, 1/4	83009	x	x	4
20	WASHER-lock special	63905	x	x	2	48	VALVE-compression release	A-65184	x	x	1
21	BEARING-ball	65044-S	x	x	1	49	GASKET-cylinder	65018	x	x	1
22	RING-retaining	65045	x	x	1	*50	PISTON & PIN (1 1/2" dia.)	A-65197-A	x	x	1
23	"O" RING	90872	x	x	1	51	Includes: RING-piston pin retaining	65261	x	x	2
24	DRIVECASE	A-65201	x	x	1	52	PISTON RING-"L" shaped	65193	x	x	1
	DRIVECASE	A-65200	x	x	1						

Accessory

*A-25256 Spark Arrestor

† Includes in A-65275 Muffler.

* Denotes new parts.

† Optional

ALWAYS FURNISH SAW MODEL AND SERIAL NUMBER WHEN ORDERING PARTS.

MINI & MINI Automatic

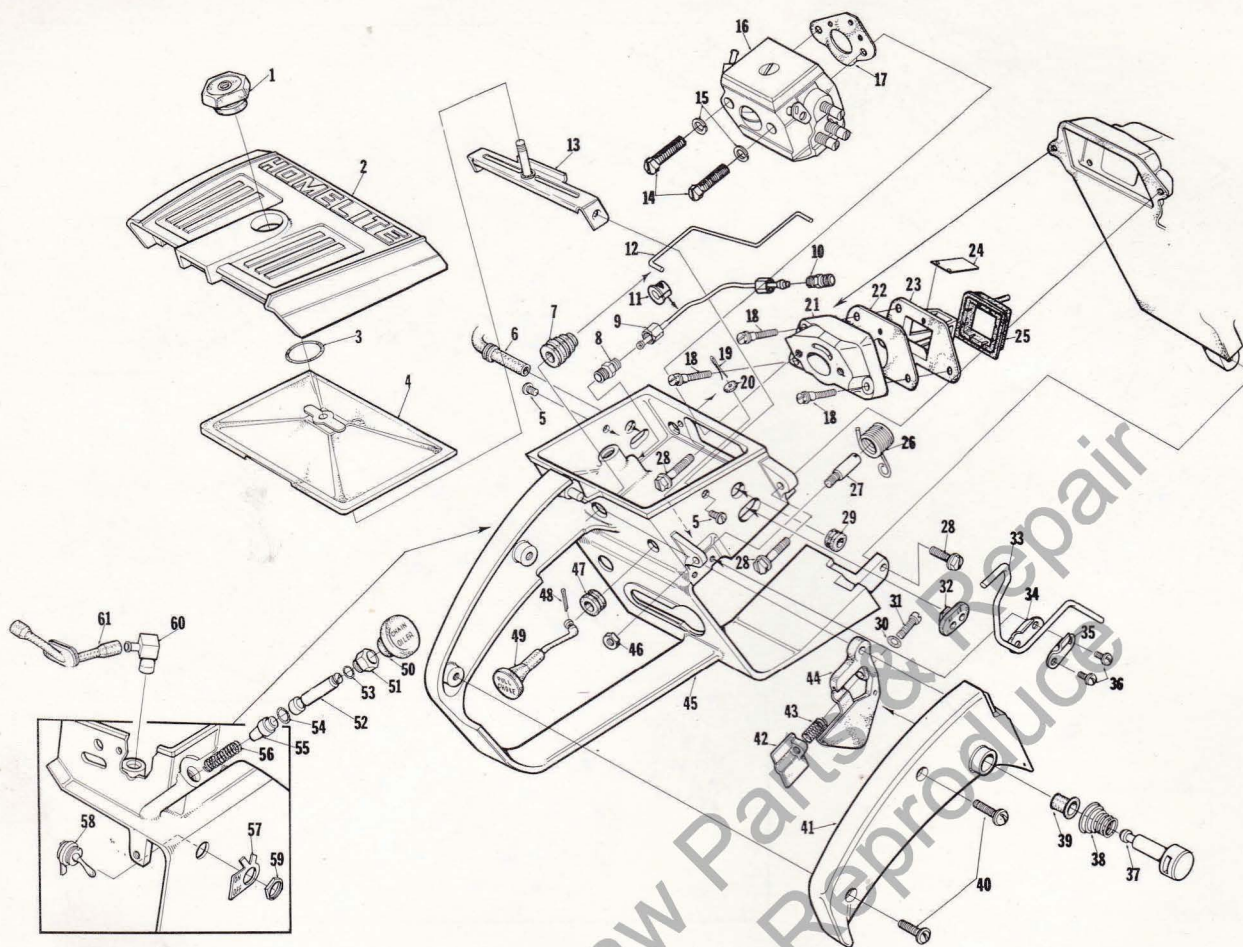


FIGURE 3

No.	Description	Part No.	Qty.	No.	Description	Part No.	Qty.
* 1	NUT-cover mounting	A-65272	1	32	GROMMET-"Hi-Lo"	65091	1
2	COVER-air filter	65096-2	1	33	LEVER-release	65173	1
3	RING-retaining	58319-A	1	34	PLATE-lever	65092	1
4	FILTER ELEMENT-air	A-65178	1	35	CLAMP-lever	65093	1
5	SCREW-pan, 8-32 x 3/8	80577	2	36	SCREW-pan, 6-32 x 3/8	80571	2
6	LINE-fuel	65168	1	37	PIN-trigger latch	65171	1
7	BOOT-throttle rod	58348	1	38	SPRING-throttle lock	64677	1
8	VALVE-check	A-65077	1	39	BUSHING	64646	1
9	LINE-oil	A-65214	1	40	SCREW-pan, 8-32 x 1/2	80560	2
*10	CONNECTOR-straight	65269	1	41	COVER-throttle handle	65042-3	1
11	GROMMET-oil line	65085	1	42	STOP-throttle adjustment	65147	1
12	ROD-throttle	65056	1	43	SPRING-throttle stop	65188	1
13	BRACKET-air filter cover	A-65123	1	44	TRIGGER-throttle	65031	1
14	SCREW-hex, 10-32 x 5/8	82165	2	45	HANDLE-throttle	A-65215	1
15	WASHER-lock, #10	83046	2	46	NUT-hex, #6-32	81126	1
16	CARBURETOR-Mini Only	A-65223	1	47	GROMMET	64862	1
	CARBURETOR- Mini Automatic Only	A-65015	1	48	PIN-cotter	86324	1
17	GASKET-carburetor	65016	1	49	ROD-choke	65072-1	1
18	SCREW-shoulder	64349-A	3	50	BUTTON-oil pump	65084	1
19	PIN-cotter	86301	1	51	NUT-plunger	65082	1
20	WASHER-felt	63290	1	52	ROD-plunger	A-65199	1
*21	SPACER-reed valve	A-65154-1	1	53	Includes: "O" Ring	90872	1
22	GASKET-reed valve seat	65014	1	54	"O" Ring	58406	1
23	SEAT-reed valve	65010	1	55	PLUNGER-oil pump	65081	1
24	REED-valve	65012	4	56	SPRING-plunger	65080	1
*25	RETAINER-reed valve	65011-1	1	57	PLATE-indicating "On-Off"	63910	1
26	SPRING-release valve	65174	1	58	SWITCH-grounding	A-63938	1
27	POST-spring	65023	1	59	Includes: NUT-hex	72084-A1	1
28	SCREW-hex, 10-24 x 5/8	80676	3	60	VALVE-check (inlet)	A-65076	1
29	GROMMET-idle adjust	65090	1	61	LINE-oil	65137	1
*30	"O" RING	65260	1				
31	SCREW-fil, 6-40 x 1	82170	1				

*Denotes new parts.

Accessory
*A-24336 Filter Kit

MINI & MINI Automatic

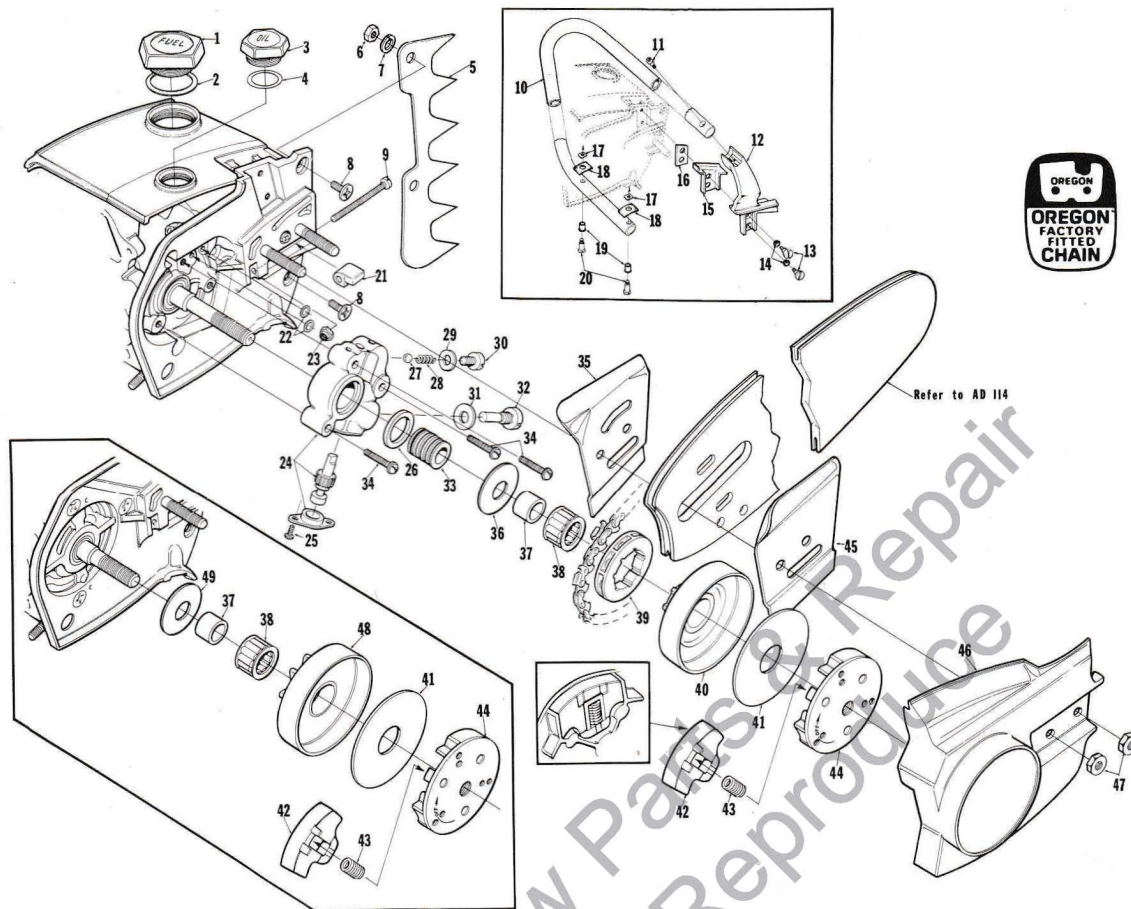


FIGURE 4

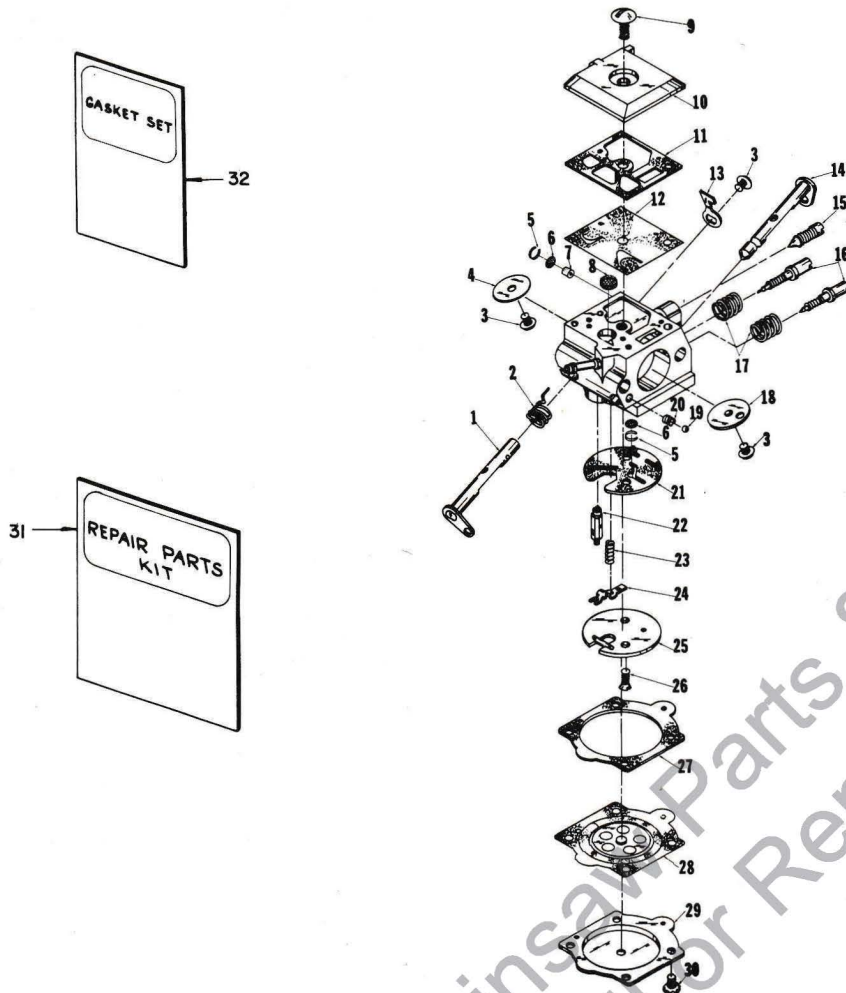
No.	Description	Part No.	Mini	Mini Auto	Qty.	No.	Description	Part No.	Mini	Mini Auto	Qty.
* 1	CAP-fuel filler	A-65283	x	x	1	24	PUMP-automatic oil	A-65212	x	1	
	Includes: VALVE-check (not shown)	63718	x	x	1	25	Includes: SCREW-pan, 4-40 x 1/4	80919	x	2	
2	GASKET-cap fuel filler	58957	x	x	1	26	SEAL	65142	x	1	
* 3	CAP-oil filler (vented)	A-65284	x	x	1	27	BALL	65225	x	1	
	Includes: VALVE-check (not shown)	63718	x	x	1	28	SPRING-check valve	65017	x	1	
4	"O" RING	65133	x	x	1	29	GASKET-check valve	65144	x	1	
5	KIT-spiked bumper	A-65181	/	/	1	30	CAP-check valve	65143	x	1	
6	Includes: NUT-hex, 10-32	81010-1	/	/	2	31	GASKET	65145	x	1	
7	WASHER-lock, #10	83006-1	/	/	2	32	SCREW-cam	65136	x	1	
8	SCREW-flat, 10-32 x 1/2	80031	/	/	2	33	WORM-oil pump	65047	x	1	
9	SCREW-guide bar adjusting	65175	x	x	1	34	SCREW-pan, 8-32 x 3/4	80567	x	3	
10	HANDLE BAR-flush cut	A-65159-1	/	/	1	35	PLATE-guide bar (inner)	63638-B	x	x	1
	HANDLE BAR-flush cut	A-65161-1	/	/	1	36	WASHER-thrust (outer)	65027	/	x	1
*	HANDLE BAR-flush cut	A-65163-1	x	x	1	37	RACE-inner	65746	x	x	1
*	HANDLE BAR-flush cut	A-65165-1	x	x	1	38	BEARING-needle	64124	x	x	1
11	SCREW-socket, 10-32 x 7/8	82169	x	x	1	39	SPROCKET-splined	OM68210	/	x	1
12	BRACKET-handle bar	65035-3	x	x	1	40	HUB & DRUM	A-65987	/	x	1
13	SCREW-shoulder	64613-A	x	x	2	41	WASHER-thrust (inner)	65024	x	x	1
14	GROMMET-handle bar	64473	x	x	2	42	SHOE-clutch	65892	x	x	3
15	MOUNT-shock	65111	x	x	1	43	SPRING-clutch	65217	x	x	3
16	PLATE-handle bar bracket	65032	x	x	1	44	PLATE-clutch	65146-1	x	x	1
17	PLATE-handle bar	65670	x	x	2	45	PLATE-guide bar (outer)	63639-A	x	x	1
18	PAD-rubber	65124	x	x	2	46	COVER-drivecase	65071-1	x	1	
19	GROMMET	65122	x	x	2		COVER-drivecase	65131-1	x	1	
20	SCREW-shoulder	65121	x	x	2	47	NUT-hex, 5/16-18	81196	x	x	2
21	PIN-bar adjusting	65112-1	x	x	1	48	SPROCKET & DRUM	A-65033	x	/	1
22	"O" RING	90872	x	x	2	49	WASHER-thrust (outer)	65064	x	/	1
23	NUT-flexlock, 10-32	81109-2	x	x	1						

* Denotes new parts
/ Optional

Accessory
*A-24276 Guide Bar Plate Set.

ALWAYS FURNISH SAW MODEL AND SERIAL NUMBER WHEN ORDERING PARTS.

MINI & MINI Automatic



HDC-1 - A-65015
HDC-2 - A-65223

No.	Part No.	Description	Qty.	No.	Part No.	Description	Qty.
1	67362	SHAFT - throttle	1	17	67377 †	SPRING - needle adjusting	2
2	67376 †	SPRING - throttle return	1	18	67365	VALVE - choke	1
3	67372 †	SCREW - valve	3	19	60051 †	BALL - choke friction	1
4	67363	VALVE - throttle	1	20	64238 †	SPRING - choke friction	1
5	67360 †	RING - screen retaining	2	21	67367 ‡	GASKET - circuit	1
6	67381 †	SCREEN - check valve	2	22	64229 †	VALVE - inlet needle	1
7	64690	JET - limiting (A-65015 only)	1	23	67378 †	SPRING - metering lever	1
	67487	JET - limiting (A-65223 only)	1	24	67383 †	LEVER - metering	1
8	64243 †	SCREEN - fuel inlet	1	25	67382	PLATE - circuit	1
9	67374	SCREW - fuel pump cover	1	26	67375	SCREW - circuit plate	2
10	67361	COVER - fuel pump	1	27	64231 ‡	GASKET - metering diaphragm	1
11	67368 ‡	GASKET - fuel pump	1	28	67371 †	DIAPHRAGM - metering	1
12	67370 †	DIAPHRAGM - fuel pump	1	29	64224	COVER - metering diaphragm	1
13	67366	STOP - throttle	1	30	64689	SCREW - metering cover	4
14	67364	SHAFT - choke	1	31	67384	REPAIR KIT	1
15	67373	SCREW - idle adjustment	1	32	67369 †	GASKET SET	1
16	67379 †	NEEDLE - idle adjustment	2		65386	REPAIR KIT - check valve	1

†Indicates contents of Repair Kit #67384

‡Indicates contents of Gasket Set

TOOLS

24299	ANVIL - crankshaft installation		23136-1	BODY - fixture	
24300	SLEEVE - crankshaft bearing	24320	BIT - #3 pozidriv	24295	COLLAR - bearing
24294	PLUG - needle bearing assembly	A-24284	WRENCH - combination	A-24309	JACKSCREW
24292	PLUG - seal removal	A-24290	BRACKET - rotor remover	24291	SLEEVE - seal (drivecase)
24298	PLUG - bearing and seal	A-24060	WRENCH - clutch (spanner)	24297	SLEEVE - seal (crankcase)

PAINT

24101	SPRAY CAN - Blue	23475	SPRAY CAN - Red
-------	------------------	-------	-----------------

ALWAYS FURNISH SAW MODEL AND SERIAL NUMBER WHEN ORDERING PARTS.

Numerical Parts List – MINI & MINI Automatic

Part No.	Description	Qty.	Part No.	Description	Qty.	Part No.	Description	Qty.	Part No.	Description	Qty.
23136-1	Sleeve	1	65017	Spring	1	65137	Line	1	*65286	Condenser	1
23475	Paint-Red	1	65018	Gasket	1	65138	Fitting	1	65321	Screw	6
A-24060	Wrench	1	65019	Seal	2	65142	Seal	1	65670	Plate	2
24101	Paint-Blue	1	65023	Post	1	65143	Cap	1	65746	Race-Inner	1
*A-24276	Set-Plate	1	65024	Washer-Inner	1	65144	Gasket	1	65892	Shoe	3
A-24284	Wrench	1	65025	Bolt	2	65145	Gasket	1	A-65987	Drum & Hub	1
A-24290	Puller	1	65027	Washer-Outer	1	65146-1	Plate	1	67191	Stud-#2	3
24291	Sleeve	1	65031	Trigger	1	65147	Stop	1	67360	Ring	2
24292	Plug	1	65032	Plate	1	A-65152-1	Body	1	67361	Cover	1
24294	Plug	1	A-65033	Sprocket	1	65153	Pin	2	67362	Shaft	1
24295	Collar	1	65035-3	Bracket	1	*A-65154-1	Spacer	1	67363	Valve	1
24287	Sleeve	1	A-65036-1	Cylinder	1	65157	Screw	1	67364	Shaft	1
24298	Plug	1	65037-2	Tank	1	A-65159-1	Handle Bar	1	67365	Valve	1
24299	Anvil	1	65038-2	Cover	1	A-65161-1	Handle Bar	1	67366	Stop	1
24300	Sleeve	1	65040	Plug	2	*A-65163-1	Handle Bar	1	67367	Gasket	1
A-24309	JackscREW	1	65042-3	Cover	1	*A-65165-1	Handle Bar	1	67368	Gasket	1
24320	Bit-#3	1	65044-S	Bearing	1	65168	Line	1	67369	Gasket Set	1
*A-24335	Kit-Rope	1	65045	Ring	1	65169	Line	1	67370	Diaphragm	1
*A-24336	Kit-Filter	1	65046	Gasket	1	A-65170	Pulley & Cup	1	67371	Diaphragm	1
*A-24337	Kit-Ignition	1	65047	Worm	1	65171	Pin	1	67372	Screw	3
*A-24338	Kit-Fastr.	1	65056	Rod	1	A-65172	Filter	1	67373	Screw	1
*A-24365	Kit-Ignition	1	65058	Base	1	65173	Lever	1	67374	Screw	1
*A-25256	Arrester	1	65059	Body	1	65174	Spring	1	67375	Screw	2
55871	Stud	4	65061	Rotor	1	65175	Screw	1	67376	Spring	1
58319-A	Ring	1	65064	Washer-Outer	1	A-65178	Filter Element	1	67377	Spring	2
58340-B	Line	1	65066-1	Cap	1	65179	Bearing	1	67378	Spring	1
58348	Boot	1	65067	Baffle	1	A-65180-1	Cylinder	1	67379	Needle	2
58406	"O" Ring	1	65071-1	Cover	1	A-65181	Kit-Bumper	1	67381	Screen	2
58957	Gasket	1	65072-1	Rod-Choke	1	65183	Grip	1	67382	Plate	1
A-59009	Filter	1	A-65076	Valve-Inlet	1	A-65184	Valve	1	67383	Lever	1
59704	Screw	2	A-65077	Valve-Outlet	1	65185	Bushing	1	67384	Repair Kit	1
60051	Ball	1	65080	Spring	1	65188	Spring	1	67487	Jet	1
63290	Washer	1	65081	Plunger	1	65189	Screen	1	*67628	Screw	1
63605	Line	1	65082	Nut	1	65193	Piston Ring	1	OM-68210	Sprocket	1
63638-A	Plate-Inner	1	65084	Button	1	*A-65196-A	Piston & Pin	1	72084-A1	Nut	1
63639-A	Plate-Outer	1	65085	Grommet	1	*A-65197-A	Piston & Pin	1	FASTENING PARTS		
63905	Washer	2	65090	Grommet	1	A-65198	Terminal	1	80015	6-32x7/16	1
63910	Plate	1	65091	Grommet	1	A-65199	Rod-Upper	1	80031	10-32x1/2	2
A-63920	Filter	1	65092	Plate	1	A-65200	Drivecase	1	80541	8-32x1/2	2
A-63938	Switch	1	65093	Clamp	1	A-65201	Drivecase	1	80560	8-32x1/2	2
A-63939	Lead	1	65095-2	Cover	1	A-65202	Crankcase	1	80567	8-32x3/4	3
64021	Screw	2	65096-2	Cover	1	A-65203	Points-Bkr.	1	80571	6-32x3/8	4
64083-1	Filter	1	65102	Lock	1	A-65204	Coil & Core	1	80577	8-32x3/8	4
64124	Bearing	1	65103	Shield	1	65205	Lead	1	80630	6-32x1/2	1
64133-A	Screw	2	65107	Spring	1	65206-A	Box-Bkr.	1	80676	12-24x5/8	3
64182	Washer	1	65108	Pawl	2	65207	Nut	1	80704	10-32x5/8	4
64224	Cover	1	65109	Stud	2	65208	Condenser	1	80805	8-32x1/2	2
64229	Needle	1	65110	Washer	2	65209	Seal	1	80870	10-32x3/8	3
64231	Gasket	1	65111	Mount	1	A-65210	Cover	1	80919	4-40x1/4	2
64238	Spring	1	65112-1	Pin	1	65211	Seal	1	81010-1	Nut-10-32	2
64243	Screen	1	65113	Shield-Inner	1	A-65212	Pump	1	81065-2	Nut-1/4-28	4
64349-A	Screw	3	65114	Shield-Outer	1	A-65213	Rod-Conn.	1	81109-2	Nut-10-32	1
64473	Grommet	2	65115-2	Cover	1	A-65214	Line	1	81112	Nut-5/16-24	1
64613-A	Screw	2	65116	Bushing	1	A-65215	Handle	1	81126	Nut-6/32	1
64646	Bushing	1	65118	Rope	1	65217	Spring	3	81196	Nut-5/16-18	2
64677	Spring	1	65120	Spring	2	65218	Insert	1	82146	8-32x5/8	9
64689	Screw Ass'y.	4	65121	Screw	2	A-65222-1	Housing	1	82151	8-32x15/16	1
64862	Grommet	1	65122	Grommet	2	*65224	Sleeve	1	82152	8-32x1 1/4	1
65003	Piston Ring	2	A-65123	Bracket	1	65225	Ball	1	82162	10-32x1 3/8	2
65006-1	Crankshaft	1	65124	Pad	2	*A-65227	Line	1	82165	10-32x1 5/8	2
65006-2	Crankshaft	1	65125	Ring	1	A-65233	Carburetor	1	82169	10-32x7/8	1
65007	Bearing	1	65126	Key	1	*65260	"O" Ring	1	82170	6-40x1	1
A-65009	Bearing(Set 28)	1	65127	"O" Ring	1	*65261	Ring	2	83004-1	Washer	1
65010	Seat	1	65130-S	Spark Plug	1	*65269	Connector	1	83006-1	Washer-#10	2
*65011-1	Retainer	1	65131-1	Cover	1	*A-65272	Nut	1	83009	Washer	4
65012	Reed	4	65133	"O" Ring	1	*A-65275	Muffler	1	83046	Washer	2
65014	Gasket	1	65135	Grommet	1	*A-65283	Cap	1	84065-1	Washer-5/16	1
A-65015	Carburetor	1	65136	Screw	1	*A-65284	Cap	1	86301	Pin-Cotter	1
65016	Gasket	1							86324	Pin-Cotter	1
									90872	"O" Ring	3

*Denotes new parts

ALWAYS FURNISH SAW MODEL AND SERIAL NUMBER WHEN ORDERING PARTS.

MINI
XL
MINI AUTOMATIC

Leon's Chainsaw Parts & Repair
Do Not Sell or Reproduce

HOMELITE®

A **Textron** DIVISION

PORT CHESTER, N.Y., U.S.A.

PRINTED IN U.S.A.