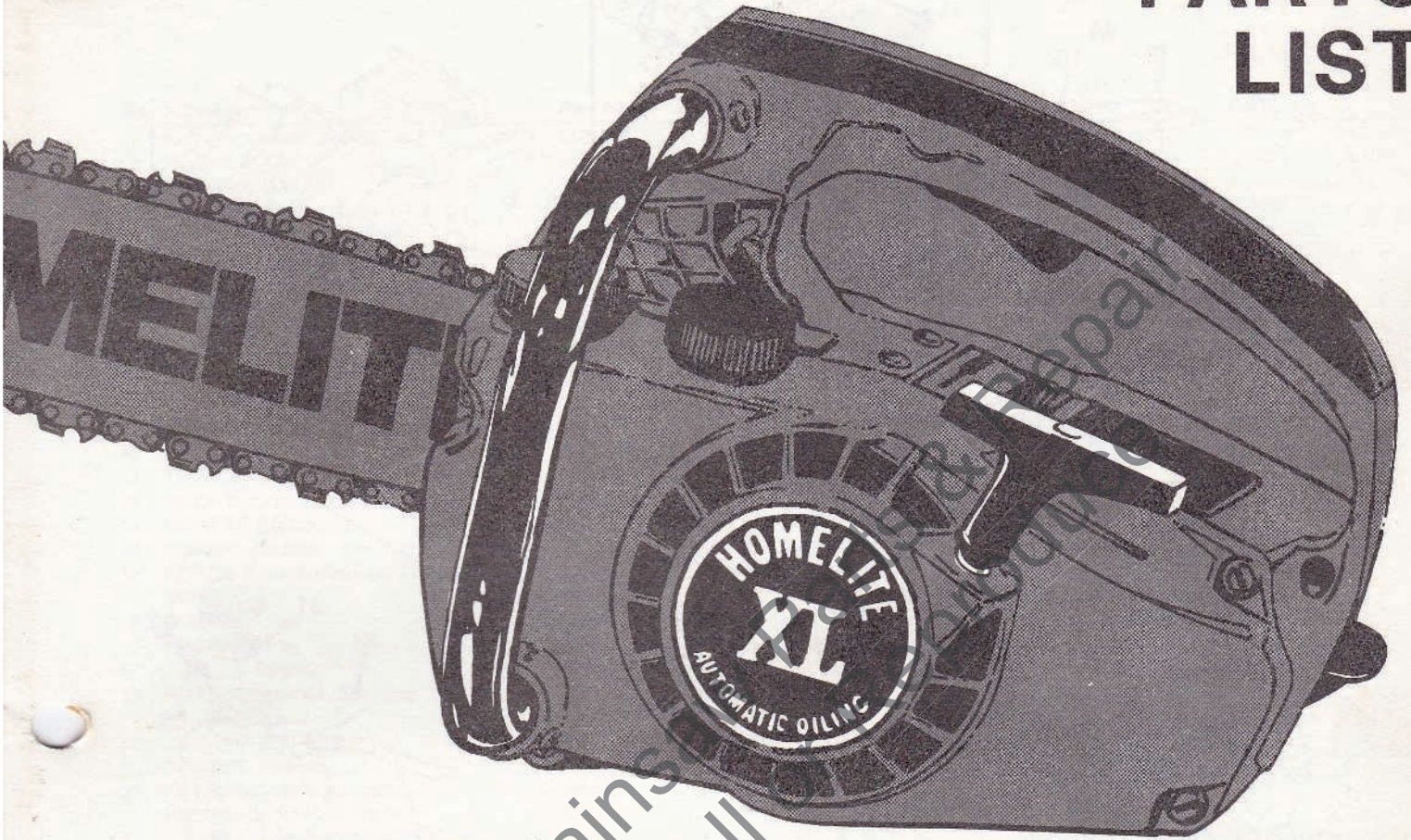


# PARTS LIST



HOMELITE®

**XL**

automatic  
oiling

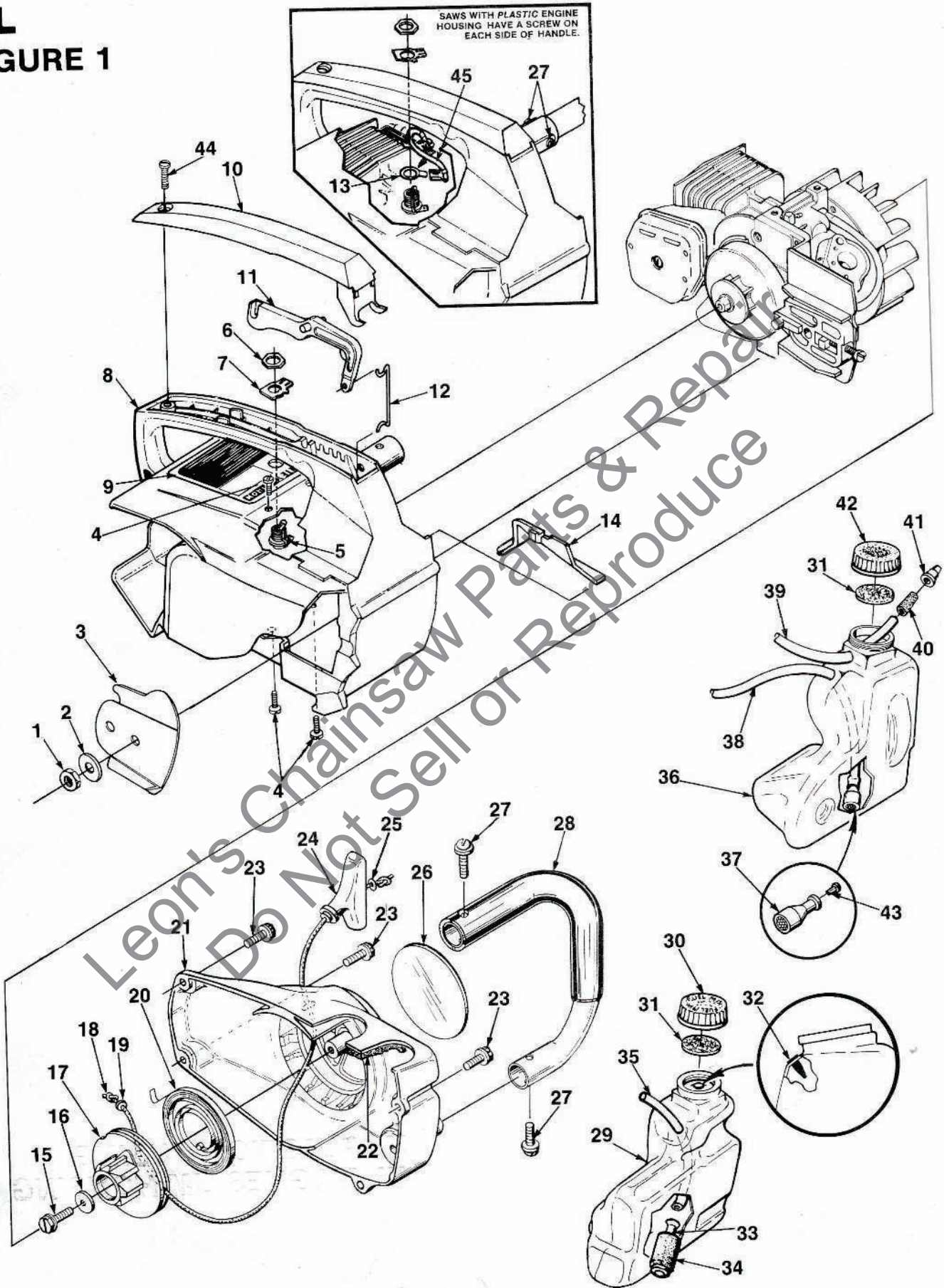
**CHAIN SAWS**

XL PLASTIC HOUSING  
XL MAGNESIUM HOUSING

**HOMELITE** **TEXTRON**

Homelite Division of Textron Inc.

# XL FIGURE 1



# XL FIGURE 1

No.	Description	Part No.	XL - Mag. Hsg.		No.	Description	Part No.	XL - Mag. Hsg.			
			XL	Pl. Hsg.				XL	Pl. Hsg.		
				Qty.					Qty.		
1	NUT- Guide bar 1/4-28	81065-2	x	x	1	32	VALVE- Check (Duck bill)	69451	x	x	1
2	WASHER- Flat	69309-1	x	x	1	33	FILTER- Fuel	A-69923	x	x	1
3	PLATE- Guide bar	69360	x	x	1		Includes:				
4	SCREW- Pan hd. 10-24 x 1/2	82216	x	x	4	34	ELEMENT- Felt	64083	x	x	1
5	SWITCH- Stop (Grounding)	A-63938	x		1	35	LINE- Fuel	70310-29	x	x	1
	SWITCH- Stop (Note 1)	93653		x		36	TANK- Oil	A-70898	x	x	1
	Includes:						Includes:				
6	NUT- Hex	72084-A1	x	x	1	37	FILTER- Oil	A-68593	x	x	1
7	PLATE- "On-Off"	70834	x	x	1	38	LINE- Oil (Note 4)	70309-24	x	x	1
8	HOUSING- Engine	A-69944-C	x		1	39	LINE- Pressure (Note 5)	A-69358	x	x	1
	HOUSING- Engine	A-93896-A		x	1		Includes:				
	Includes:					40	CONNECTOR- Oil	69659-1A	x	x	1
9	PLATE- Starting instructions	70835	x	x	1	41	VALVE- Check (Duck bill)	69451	x	x	1
10	COVER- Handle	69872-A	x	x	1	42	CAP- Tank (Oil) (Black)				
11	TRIGGER- Front	69874-B	x	x	1		(Note 2)	A-70893-A	x	x	1
12	ROD- Throttle (Front)	69255-C	x	x	1		Includes:				
13	CONTACT- Ground	70845		x	1		GASKET- Filler cap				
14	COVER- Air filter	69263	x	x	1		(Note 3) (See #31)	94838-A	x	x	1
15	SCREW- Hex washer hd., 10-32 x 5/8	80704		x	1	43	PLUG	93703-A	x	x	1
	SCREW	94565		x	1	44	SCREW- Pan hd., 10 x 5/8	82312		x	1
16	WASHER- Flat	63606		x	1	45	SCREW- Pan washer hd., 10-32 x 5/8	82239		x	1
	WASHER- Flat	94062		x	1		LEAD- Ground switch	A-93717		x	1
17	PULLEY- Starter	69158		x	1						
18	ROPE- Starter #4, 34" long	A-93874		x	1						
	Includes:										
19	WASHER- Nylon	93862		x	1						
20	SPRING- Rewind	69217		x	1						
21	HOUSING- Rewind starter	A-69540		x	1						
	HOUSING- Rewind starter	A-94241		x	1						
22	FILTER- Fuel tank valve	69443		x	1						
23	SCREW- Hex 10-32 x 5/8	80704		x	4						
	SCREW	94565		x	4						
24	GRIP- Starter rope	70211		x	1						
25	WASHER- Flat	84025		x	1						
26	DECAL- XL	69887		x	1						
27	SCREW- Pan washer Hd., 10-32 x 5/8	82239		x	2						
	SCREW- Pan hd., #8 x 1/2 (Note 6)	82348		x	4						
28	HANDLE BAR	A-70219-A		x	1						
	HANDLE BAR	70801		x	1						
29	TANK- Fuel	A-70899		x	1						
	Includes:										
30	CAP- Tank fuel (Red) (Note 2)	A-70894-A		x	1						
	Includes:										
31	GASKET- Fuel filler cap (Note 3)	94838-A		x	1						

NOTE 1- 93653 Switch does not include 72084-A1 Nut.

NOTE 2- Tanks with internal threads require A-70445 Fuel Cap and A-70446 Oil Cap. If internal threads in tank are worn, order new external threaded tank.

NOTE 3- Use 70826 Gasket in A-70893 and A-70894 external thread caps. Use 69585 Gasket for caps with internal threads.

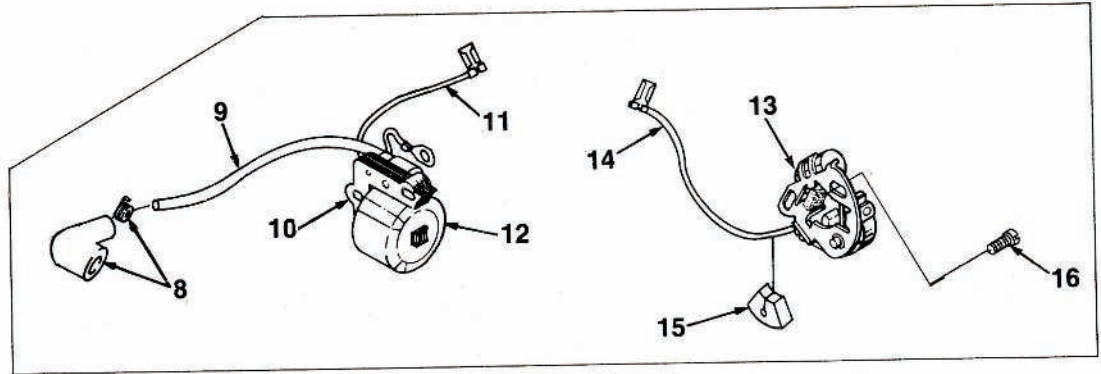
NOTE 4- Units with pressurized oil system use 70309-31 tubing for replacement of index #38.

NOTE 5- Units with pressurized oil system use 70309-08 tubing for replacement of index #39.

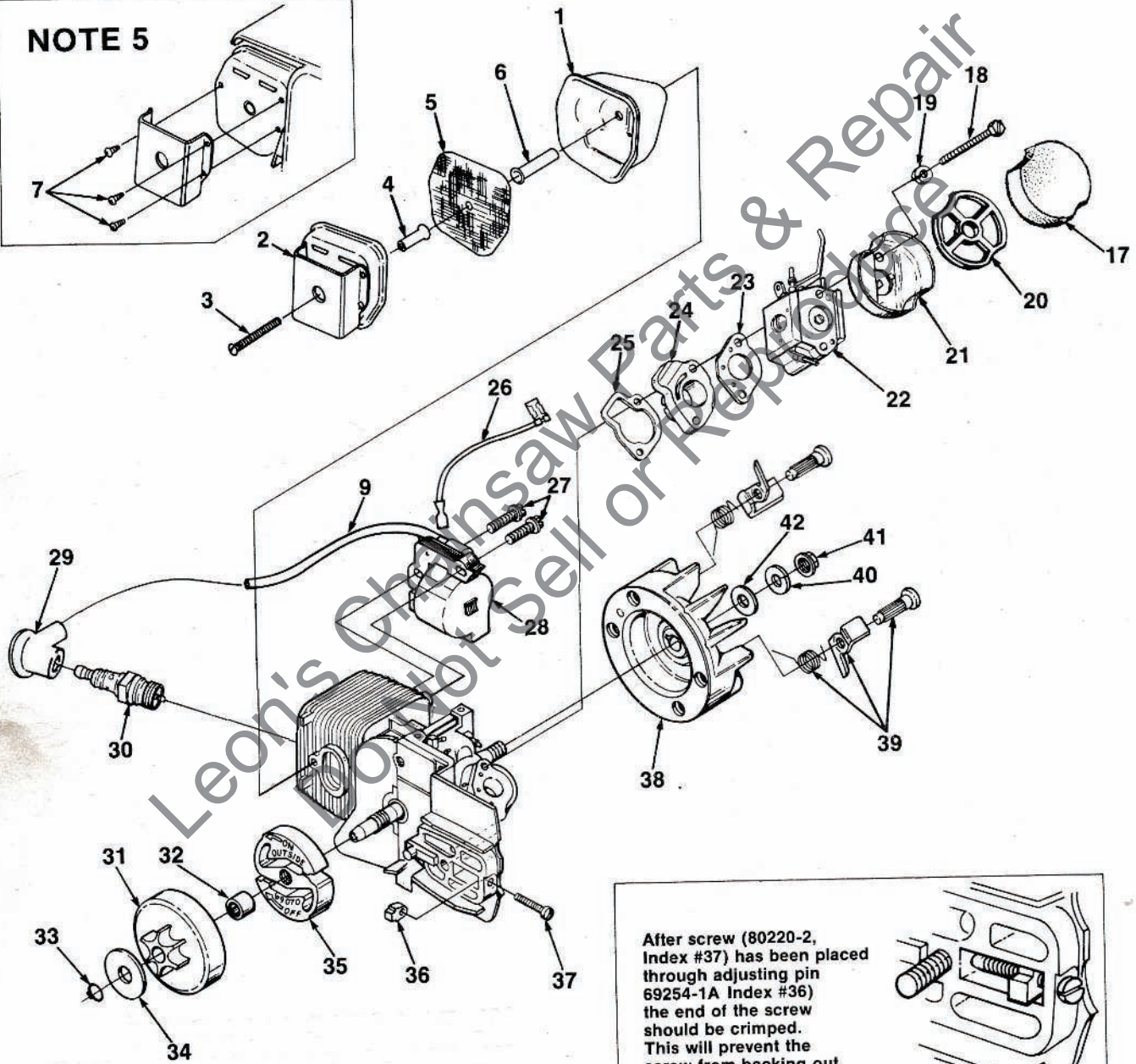
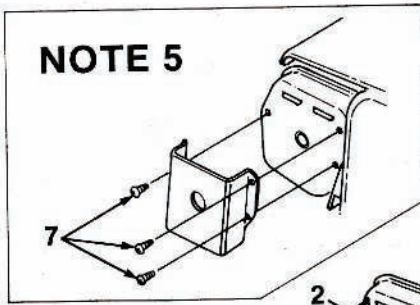
NOTE 6- Units with Plastic Housings requires a screw on each side of handle. See inset.

# XL

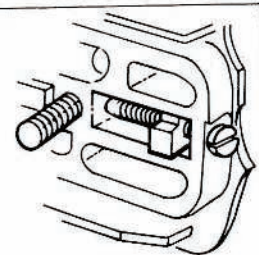
## FIGURE 2



### NOTE 5



After screw (80220-2, Index #37) has been placed through adjusting pin 69254-1A Index #36) the end of the screw should be crimped. This will prevent the screw from backing out.



# XL

## FIGURE 2

No.	Description	Part No.	Qty.	No.	Description	Part No.	Qty.
1	MUFFLER	A-94051-B	1	29	TERMINAL- Spark plug (Solid state) (Note 2)		1
	Includes:			30	SPARK PLUG- Champion DJ-7J	68616-S	1
2	CAP- Muffler (w/shield)	A-95428	1	31	SPROCKET & DRUM (Standard)		1
	SPARK ARRESTOR	A-94139	1		(6 Tooth 37 & 375 chain)	A-70221-B	1
	Includes:				SPROCKET & DRUM (Early Models)	A-69587-A	1
3	SCREW	82320	1		(9 Tooth .25 Pitch 2 1/4")		
4	SPACER (Short)	93989	1		Includes:		
5	SCREEN- Spark arrestor	93991	1	32	BEARING- Needle	68512	1
6	SPACER (Long)	93990	1	33	RING- Retaining- Clutch	93972	1
7	SCREW- #4 x .250 (Note 5)	82342	3	34	WASHER- Thrust (clutch)	69138	1
8	TERMINAL- Spark plug	A-33055	1	35	CLUTCH- "S"	A-70351-A	1
9	LEAD- High tension (Note 1)	69326	1	36	PIN- Adjusting (See Insert)	69254-1A	1
10	CORE- Coil (Point ignition)	69324	1	37	SCREW- Adjusting (Flt hd. 8-32 x 1)	80220-2	1
11	LEAD- Stop switch (Point ignition)	A-95051	1		(See Insert)		
12	COIL- Ignition (Point Ignition)	69323	1	38	ROTOR & STARTER PAWL		
	RETAINER- Coil				(Solid State) (PHELON)	A-94717	1
	(Not shown) (Point Ignition)	69325	1		ROTOR & STARTER PAWL		
13	POINT SET- Breaker (Point Ignition)	A-69336	1		(Point Ignition) (PHELON)	A-69297-A	1
	Includes:				Includes:		
14	LEAD- Electrical	70249	1	39	KIT- Starter pawl (Note 4)	A-70285-A	1
15	SEAL- Lead (Point Ignition)	69247	1	40	WASHER- Lock	83002	1
16	SCREW- Point Set (Point Ignition)	88026	2	41	NUT- Rotor 5/16 - 24	81117	1
17	FILTER- Air	69141	1	42	WASHER- Flat	84065-1	1
18	SCREW- Hex hd., 10-32 x 2 1/4	80481	1				
19	WASHER- Lock, #10	83006-1	2				
20	RETAINER- Air filter	69457	1				
21	CUP- Air filter	69148	1				
22	CARBURETOR- HDC-48A (Walbro)	A-94053	1				
	CARBURETOR HK-27A (Tillotson)	A-70551-A	1				
23	GASKET- Carburetor	65016	1				
24	MANIFOLD- Intake	A-69373-A	1				
25	GASKET- Intake manifold	69143	1				
26	LEAD- Ground (Solid State)	A-94721	1				
27	SCREW- Hex w/washer 8-32 x 3/4	82248	2				
28	MODULE- Ignition (Solid state)	A-94711	1				
	Includes:						
	LEAD- High Tension (See Index #9)	69326	1				

NOTE 1- For Solid State Ignition cut wire to 6 1/2".

NOTE 2- Use A-33055 for Service replacement.

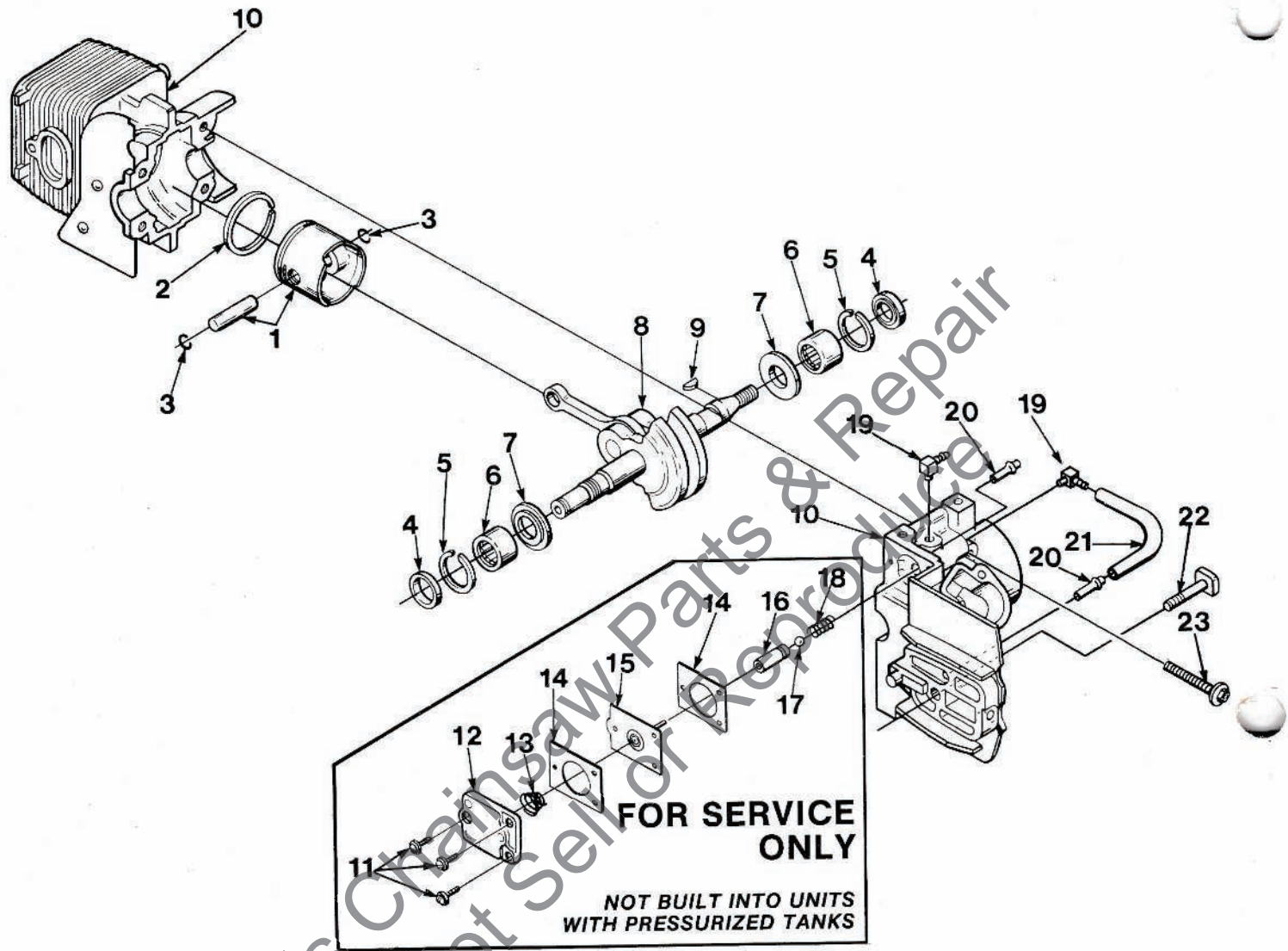
NOTE 3- Retaining Ring, item 33 must never be reused once it has been removed. Item 33 included with both item 31 and 35.

NOTE 4- Replacement Starter Pawl Kit, item #39 includes an oversized pin. Paint, stamp or mark to identify oversized pin when installing. Oversize pin can be installed tightly only once. If oversize pin is removed, the entire rotor assembly must be replaced.

NOTE 5- Units with separate shield requires index #7 screws all new muffler caps A-95428 includes a shield welded to cap.

# XL

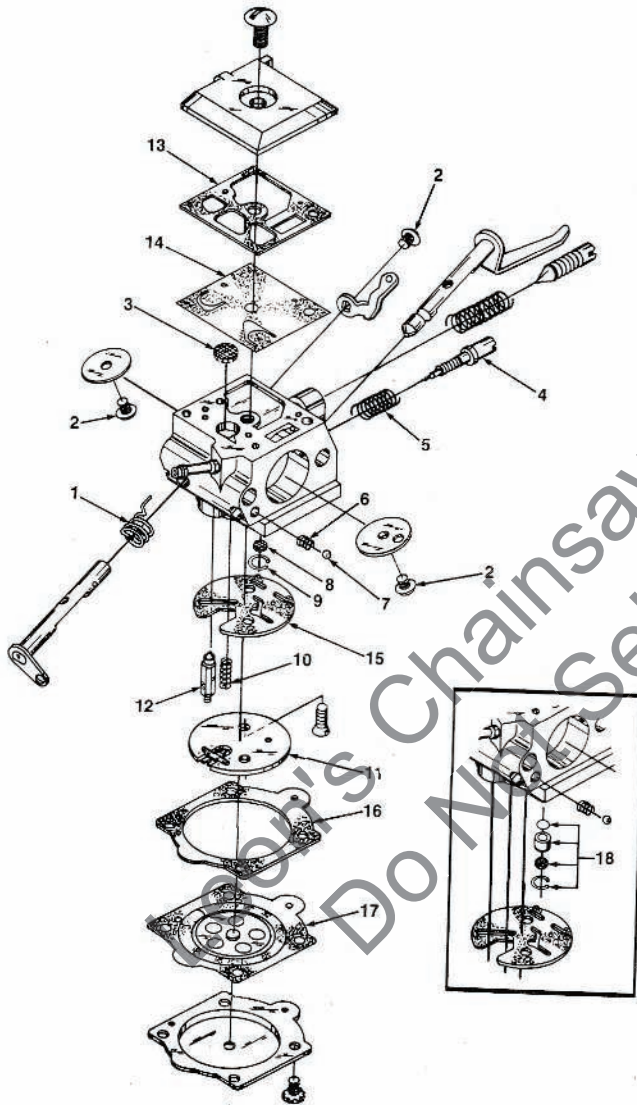
## FIGURE 3



No.	Description	Part No.	Qty.	No.	Description	Part No.	Qty.
1	PISTON & PIN Includes:	A-69393	1	12	COVER- Oil pump	69224-1C	1
2	PISTON RING	69312	1	13	SPRING- Oil pump	69447	1
3	RING- Piston pin retaining	65261	2	14	GASKET- Oil pump	69244-1	2
4	SEAL	94638	2	15	PLUNGER- Oil pump	A-12356-B	1
5	SPACER- Seal	69407	2	16	BODY- Oil pump	69343-1	1
6	BEARING- Needle	12530	2	17	BALL- Check valve	60051	1
7	BEARING- Needle (Alternate)	68513	2	18	SPRING- Check valve	68570	1
8	CRANKSHAFT- (Solid State)	A-94712	1	19	FITTING- Oil line	70204	2
9	CRANKSHAFT- (Point Ignition)	A-70352	1	20	FITTING- Tube	69833	2
10	KEY- Magneto (See above)	69250	1	21	LINE- Oil	70161	1
11	CYLINDER & CRANKCASE (Solid State)	A-95071	1	22	BOLT- Guide bar	69195	1
12	CYLINDER & CRANKCASE (Point Ignition)	A-69421-B	1	23	SCREW- Sems hex hd. 8-32 x 1	88044	4
13	Includes:						
14	SCREW- Pan hd., 6-32 x 3/8	80571	3				

**CARBURETOR  
HDC-48A**

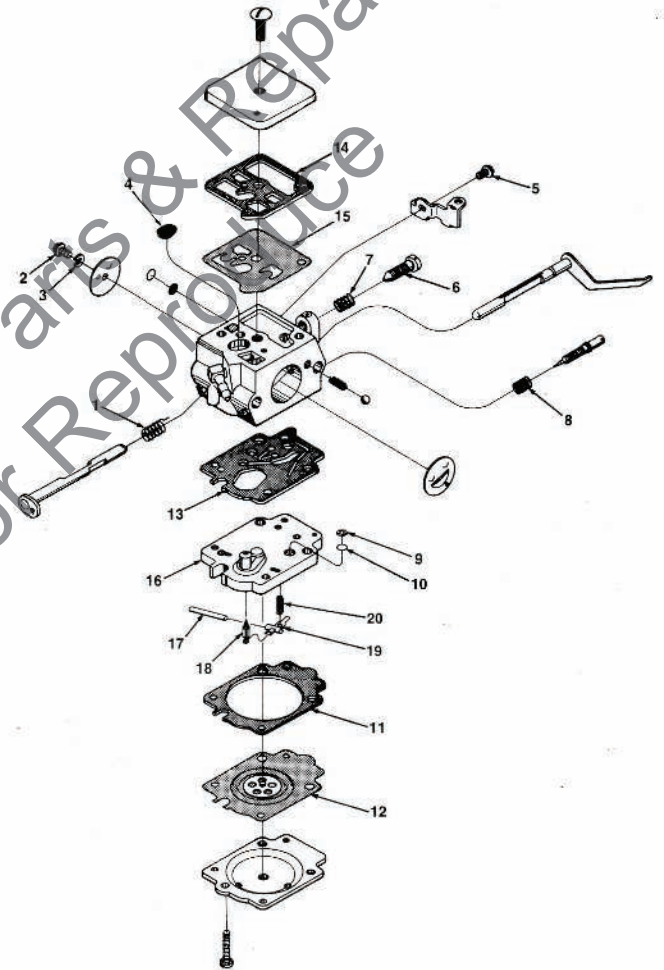
**A-94053**



- 94702 Repair Kit (Includes 1-17)
- 70655 Gasket/Diaphragm Set (Includes 13-17)
- 93910 Check Valve Repair Kit (18)
- 94057 Circuit Plate-High Altitude .029 (Not shown)
- 64229 Inlet Needle (#12)

**CARBURETOR  
HK-27A**

**A-70551-A**



- 94810 Repair Kit (Includes 1-15)
- 70094 Gasket/Diaphragm Set (Includes 11-15)
- 94817 Module #16 (Includes 17-20)
- 70589 High Altitude Kit (Not shown)

## ACCESSORIES

GASKET- Oil pump body (Repair)	69596
KIT- Repair, (Sprocket nose bar)	A-70239-B
KIT- Spark arrestor (Used with A-93686 Muffler and A-69253-1 Muffler)	A-69586-B
TUBING- Rubber (10 ft. length) FUEL	70310-99
TUBING- Rubber (10 ft. length) OIL	70309-99
SAFE•T•TIP	A-70776-A
Includes:	
SCREW- (Special)	93695
GREASE- Multi-use	17193
(Sprocket bearing-PT Guide Bar)	
KIT- Hand guard	A-70796-A
Includes:	
WASHER- Belleville (2)	70728
SPACER (1)	70748
SCREW- 10-32 x 5/8 z91z0	80572
SCREW (1)	82312
CARRYING CASE	94215
STARTING ROPE- 250 ft. reel #4	68848

## TOOLS

SILASTIC- (Crankcase sealing)	24823
PLIERS- TUR-ARC	
(Sprocket retaining ring)	17198
PULLER- Magneto rotor	A-24747-A
Includes:	
BOLT- 5/16-18 x 1 3/4 (1)	80288
NUT- Hex 5/16-18 (2)	81196
WRENCH- Hex soc., 5/32	
(For 10-24 screws)	22126
WRENCH- Hex soc., 9/64	
(for socket head connecting rod screws)	23528
WRENCH- Spanner (clutch)	A-93791
Includes:	
PIN- Clutch spanner (2)	23717-A
TOOL- Carburetor check valve installation	
(Walbro Only)	24972

Leon's Chainsaw Parts & Repair  
Do Not Sell or Reproduce

**HOMELITE DIVISION OF TEXTRON INC.**  
P.O. BOX 7047  
14401 CAROWINDS BOULEVARD  
CHARLOTTE, N.C. 28217

**HOMELITE** **TEXTRON**

Homelite Division of Textron Inc.