

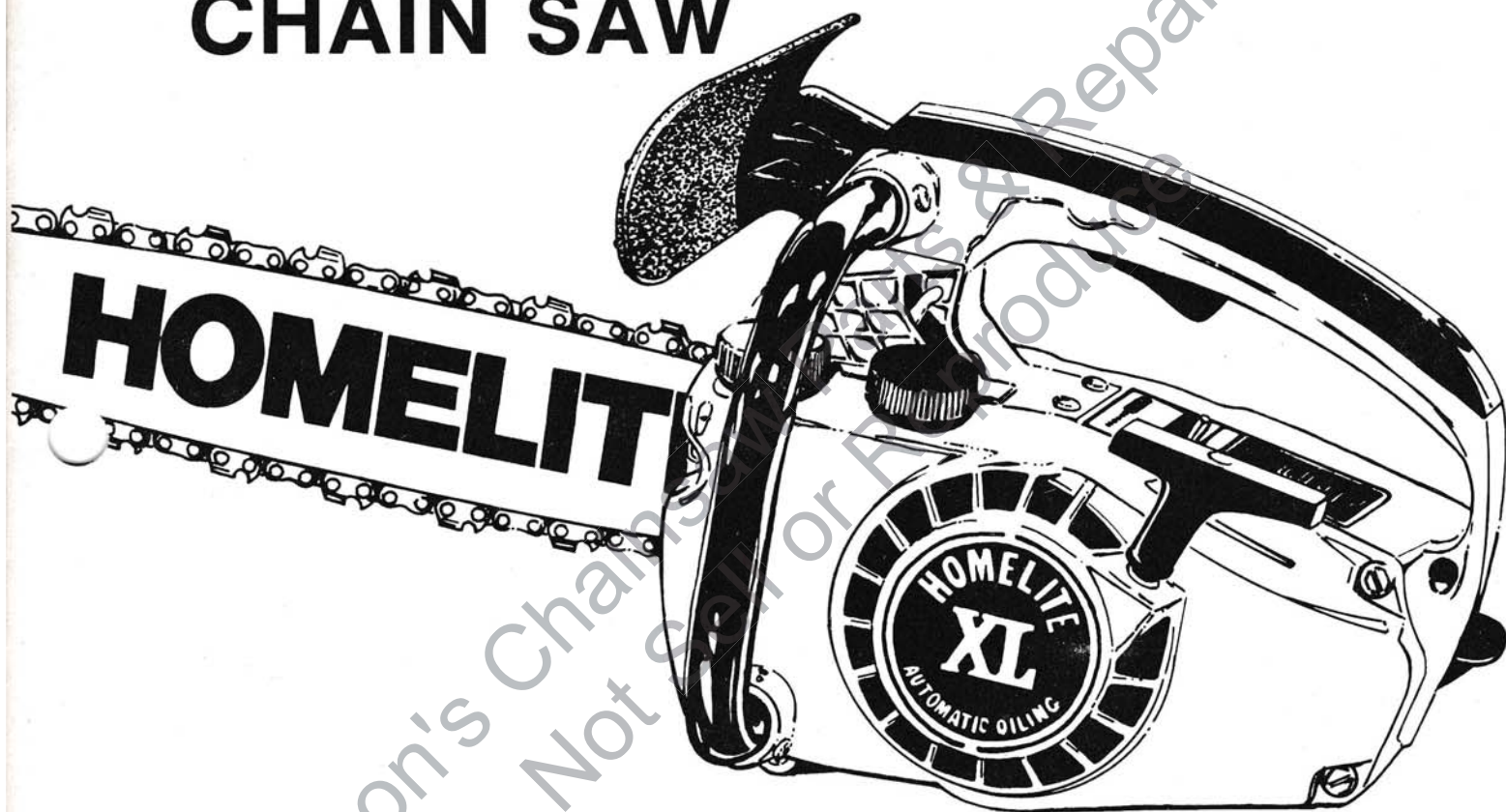
# PARTS LIST

PART NO. 24923 - REV. 2

PRINTED IN U.S.A.

PRICE 35¢

# HOMELITE® XL® AUTOMATIC OILING CHAIN SAW



MAGNESIUM HOUSING

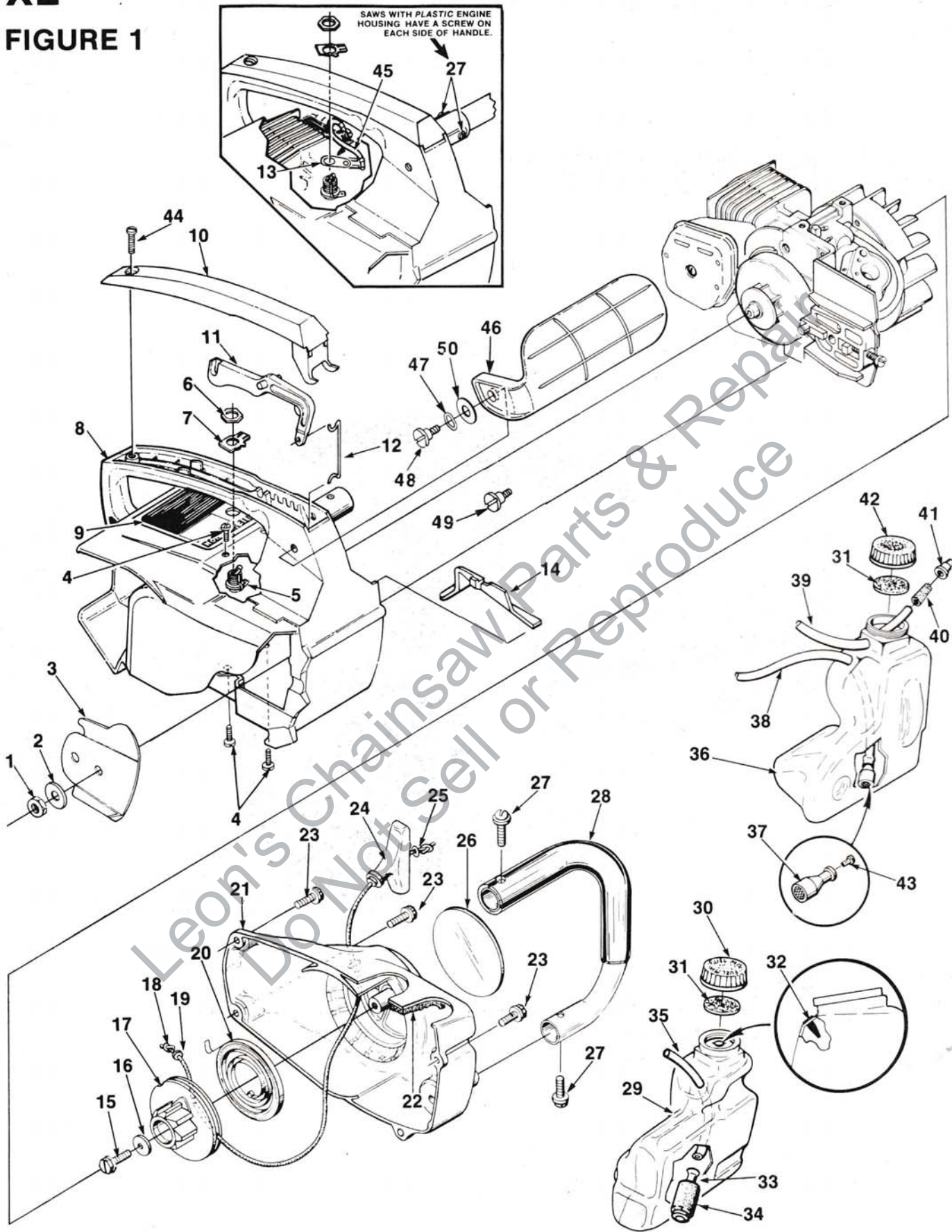
PLASTIC HOUSING

**HOMELITE** **TEXTRON**

Homelite Division of Textron Inc.

# XL

## FIGURE 1





# XL

## FIGURE 1

| No. | Description                           | Part No.  | XL - Mag. Hg. |         | Qty. | No. | Description                                    | Part No.  | XL - Mag. Hg. |         | Qty. |
|-----|---------------------------------------|-----------|---------------|---------|------|-----|--|-----------|---------------|---------|------|
|     |                                       |           | XL            | PI. Hg. |      |     |  |           | XL            | PI. Hg. |      |
| 1   | NUT- Guide bar 1/4-28                 | 81065-2   | x             | x       | 1    | 32  | VALVE- Check<br>(Duck bill)                    | 69451     | x             | x       | 1    |
| 2   | WASHER- Flat                          | 69309-A   | x             | x       | 1    | 33  | FILTER- Fuel                                   | A-69923   | x             | x       | 1    |
| 3   | PLATE- Guide bar                      | 69360-1   | x             | x       | 1    |     | Includes:                                      |           |               |         |      |
| 4   | SCREW- Pan hd<br>10-24 x 1/2          | 96620     | x             | x       | 4    | 34  | ELEMENT- Felt                                  | 64083     | x             | x       | 1    |
| 5   | SWITCH- Stop (grounding)              | A-63938   | x             |         | 1    | 35  | LINE- Fuel                                     | 70310-29  | x             | x       | 1    |
|     | SWITCH- Stop (note 1)                 | 93653     |               | x       | 1    | 36  | TANK- Oil                                      | A-70898-A | x             | x       | 1    |
|     | Includes:                             |           |               |         |      |     | Includes:                                      |           |               |         |      |
| 6   | NUT- Hex                              | 72084-A1  | x             | x       | 1    | 37  | FILTER- Oil                                    | A-78889   | x             | x       | 1    |
| 7   | PLATE- "On-Off"                       | 70834     | x             | x       | 1    | 38  | LINE- Oil (Note 4)                             | 70309-24  | x             | x       | 1    |
| 8   | HOUSING- Engine                       | A-69944-D | x             |         | 1    | 39  | LINE- Pressure (Note 5)                        | A-69358-B | x             | x       | 1    |
|     | HOUSING- Engine                       | A-93896-A |               | x       | 1    |     | Includes:                                      |           |               |         |      |
|     | Includes:                             |           |               |         |      | 40  | CONNECTOR- Oil                                 | 69659-B   | x             | x       | 1    |
| 9   | PLATE- Starting<br>instruction        | 70835     | x             | x       | 1    | 41  | VALVE- Check<br>(Duck bill)                    | 69451     | x             | x       | 1    |
| 10  | COVER- Handle                         | 69872-A   | x             | x       | 1    | 42  | CAP- Tank (oil)<br>(black) (Note 2)            | A-70893-B | x             | x       | 1    |
| 11  | TRIGGER- Front                        | 69874-B   | x             | x       | 1    |     | Includes:                                      |           |               |         |      |
| 12  | ROD- Throttle (front)                 | 69255-C   | x             | x       | 1    |     | GASKET- Filler cap<br>(Note 3) (see #31)       | 94838-A   | x             | x       | 1    |
| 13  | STRAP- Ground                         | 96417     | x             |         | 1    | 43  | PLUG   | 93703-A   | x             | x       | 1    |
| 14  | COVER- Air filter                     | 69263     | x             | x       | 1    | 44  | SCREW- Pan hd.,<br>10 x 5/8                    | 82312     |               | x       | 1    |
| 15  | SCREW- Hex washer hd.<br>10-32 x 5/8  | 80704     | x             |         | 1    |     | SCREW- Pan washer hd.,<br>10-32 x 5/8          | 82239     |               | x       | 1    |
|     | SCREW- Oversize                       | 94565     |               | x       | 1    | 45  | LEAD- Ground switch                            | A-93717   |               | x       | 1    |
| 16  | WASHER- Flat                          | 63606-1   | x             |         | 1    | 46  | GUARD- Hand                                    | A-70796-B | x             | x       | 1    |
|     | WASHER- Flat                          | 94062     |               | x       | 1    |     | Includes:                                      |           |               |         |      |
| 17  | PULLEY- Starter                       | 69158-A   | x             | x       | 1    | 47  | WASHER- Curved spring                          | 95694     | x             | x       | 1    |
|     | PULLEY- Starter<br>(Alternate)        | 94562-A   |               | x       | 1    | 48  | SCREW- Shoulder<br>(10-32 self-tapping)        | 95713     |               | x       | 1    |
| 18  | ROPE- Starter #4, 34" long            | A-93874-A | x             | x       | 1    | 49  | SCREW- Shoulder<br>(#10 thread forming x .560) | 95714     |               | x       | 1    |
|     | Includes:                             |           |               |         |      | 50  | WASHER- Flat                                   | 96102     | x             | x       | 1    |
| 19  | WASHER- Nylon                         | 93862     | x             | x       | 1    |     |  |           |               |         |      |
| 20  | SPRING- Rewind                        | 69217     | x             | x       | 1    |     |  |           |               |         |      |
| 21  | HOUSING- Rewind starter               | A-69540   | x             |         | 1    |     |  |           |               |         |      |
|     | HOUSING- Rewind starter               | A-94241   |               | x       | 1    |     |  |           |               |         |      |
| 22  | FILTER- Fuel tank valve               | 69443     | x             | x       | 1    |     |  |           |               |         |      |
| 23  | SCREW- Hex 10-32 x 5/8                | 80704     | x             |         | 4    |     |  |           |               |         |      |
|     | SCREW- Screw (Oversize)               | 94565     |               | x       | 4    |     |  |           |               |         |      |
| 24  | GRIP- Starter rope                    | 70211     | x             | x       | 1    |     |  |           |               |         |      |
| 25  | WASHER- Flat                          | 84025     | x             | x       | 1    |     |  |           |               |         |      |
| 26  | DECAL- XL                             | 69887     | x             | x       | 1    |     |  |           |               |         |      |
| 27  | SCREW- Pan washer hd.,<br>10-32 x 5/8 | 82239     |               | x       | 2    |     |  |           |               |         |      |
|     | SCREW- Pan hd.,<br>#8 x 1/2 (Note 6)  | 94065     |               | x       | 4    |     |  |           |               |         |      |
| 28  | HANDLE BAR                            | A-70219-A | x             |         | 1    |     |  |           |               |         |      |
|     | HANDLE BAR                            | 94508     |               | x       | 1    |     |  |           |               |         |      |
| 29  | TANK- Fuel                            | A-70899-A | x             | x       | 1    |     |  |           |               |         |      |
|     | Includes:                             |           |               |         |      |     |  |           |               |         |      |
| 30  | CAP- Tank fuel (red)<br>(Note 2)      | A-70894-B | x             | x       | 1    |     |  |           |               |         |      |
|     | Includes:                             |           |               |         |      |     |  |           |               |         |      |
| 31  | GASKET- Fuel filler<br>cap (Note 3)   | 94838-A   | x             | x       | 1    |     |  |           |               |         |      |

NOTE -1 93653 Switch does not include 72084-A1 nut.

NOTE -2 Tanks with internal threads require A-70445 fuel cap and A-70446 oil cap. If internal threads in tank are worn, order new external threaded tank.

NOTE -3 Use 70826 gasket in A-70893 and A-70894 external thread caps. Use 69585 gasket for caps with internal threads.

NOTE -4 Units with pressurized oil system use 70309-31 tubing for replacement of index #38.

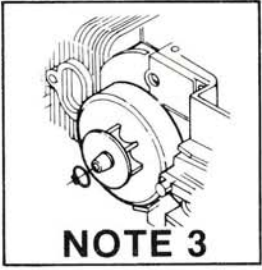
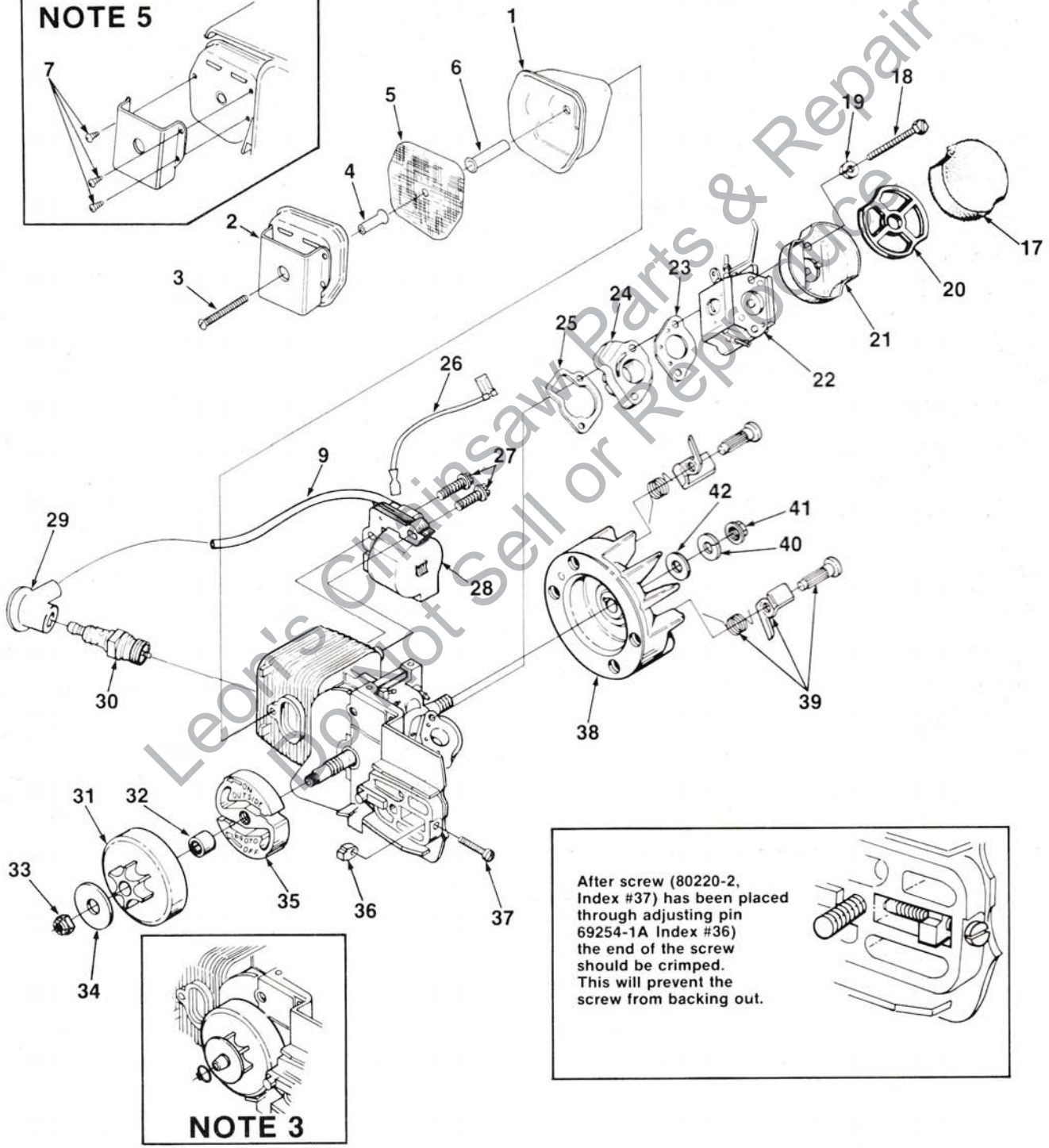
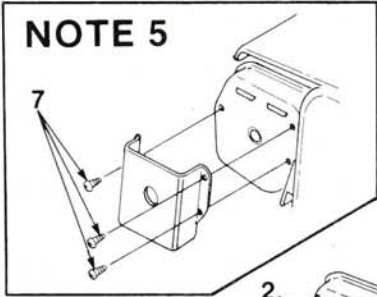
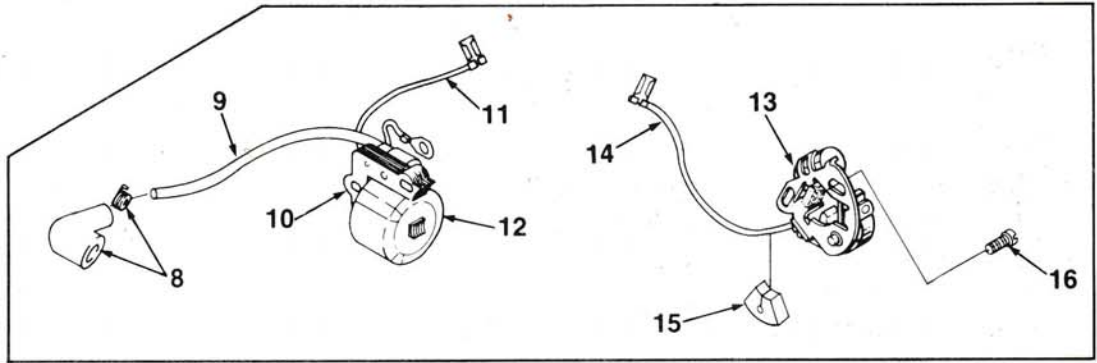
NOTE -5 Units with pressurized oil system use 70309-08 tubing for replacement of index #39.

NOTE -6 Units with plastic housings requires a screw on each side of handle. See inset.

NOTE -7 For units with steel hand guard require 70728 belle-ville washer, 70748 spacer, 80572 screw 10-32 x 5/8 (Mag. hgs.) or 82312 screw for plastic housing.

# XL

## FIGURE 2



After screw (80220-2, Index #37) has been placed through adjusting pin 69254-1A Index #36) the end of the screw should be crimped. This will prevent the screw from backing out.

This diagram shows a close-up of a screw being inserted into a housing. The end of the screw is being crimped to prevent it from backing out.



# XL

## FIGURE 2

| No. | Description                     | Part No.  | Qty. | No. | Description                    | Part No.  | Qty. |
|-----|---------------------------------|-----------|------|-----|--------------------------------|-----------|------|
| 1   | MUFFLER                         | A-94051-B | 1    | 30  | SPARK PLUG- Champion DJ-7J     | 68616-S   | 1    |
|     | Includes:                       |           |      | 31  | SPROCKET & DRUM (Standard)     | A-70221-C | 1    |
| 2   | CAP- Muffler (w/shield)         | A-95428   | 1    |     | (6 tooth 37 & 375 chain)       |           |      |
|     | SPARK ARRESTOR                  | A-94139   | 1    |     | SPROCKET & DRUM (Early models) | A-69587-A | 1    |
|     | Includes:                       |           |      |     | (9 tooth .25 pitch)            |           |      |
| 3   | SCREW                           | 82320     | 1    |     | Includes:                      |           |      |
| 4   | SPACER- (Short)                 | 93989     | 1    | 32  | BEARING- Needle                | 68512     | 1    |
| 5   | SCREEN- Spark arrestor          | D-93991   | 1    | 33  | NUT- Locking                   |           |      |
| 6   | SPACER- (Long)                  | 93990     | 1    |     | 5/16-24 (Note 3)               | 81112     | 1    |
| 7   | SCREW- #4 x .250 (Note 5)       | 82342     | 3    | 34  | WASHER- Thrust (Clutch)        | 95299     | 1    |
| 8   | TERMINAL- Spark plug            | A-33055   | 1    | 35  | CLUTCH- "S"                    | A-70351-A | 1    |
| 9   | LEAD- High tension (Note 1)     | 69326     | 1    | 36  | PIN- Adjusting (See insert)    | 69254-1A  | 1    |
| 10  | CORE- Coil (Point ignition)     | 69324     | 1    | 37  | SCREW- Adjusting               |           |      |
| 11  | LEAD- Stop switch               |           |      |     | (Fil hd. 8-32 x 1)(See insert) | 80220-2   | 1    |
|     | (Point ignition)                | A-95051   | 1    | 38  | ROTOR & STARTER PAWL           |           |      |
| 12  | COIL- Ignition (Point ignition) | 69323     | 1    |     | (Solid state) (Phelon)         | A-96714   | 1    |
|     | RETAINER- Coil (Not shown)      |           |      |     | ROTOR & STARTER PAWL           |           |      |
|     | (Point ignition)                | 69325     | 1    |     | (Point ignition) (Phelon)      | A-69297-B | 1    |
| 13  | POINT SET- Breaker              |           |      |     | Includes:                      |           |      |
|     | (Point ignition)                | A-69336   | 1    | 39  | KIT- Starter pawl (Note 4)     | A-70285-C | 1    |
|     | Includes:                       |           |      | 40  | WASHER- Lock                   | 83002     | 1    |
| 14  | LEAD- Electrical                | 70249     | 1    | 41  | NUT- Rotor 5/16-24             | 81117     | 1    |
| 15  | SEAL- Lead (Point ignition)     | 69247     | 1    | 42  | WASHER- Flat                   | 84065-1   | 1    |
| 16  | SCREW- Point set                |           |      |     |                                |           |      |
|     | (Point ignition)                | 88026     | 2    |     |                                |           |      |
| 17  | FILTER- Air                     | 69141     | 1    |     |                                |           |      |
| 18  | SCREW- Hex hd.                  |           |      |     |                                |           |      |
|     | 10-32 x 2 1/4                   | 80481     | 2    |     |                                |           |      |
| 19  | WASHER- Lock #10                | 83006-1   | 2    |     |                                |           |      |
| 20  | RETAINER- Air filter            | 69457     | 1    |     |                                |           |      |
| 21  | CUP- Air filter                 | 69148     | 1    |     |                                |           |      |
| 22  | CARBURETOR- HDC-65 (Walbro)     | A-94649-A | 1    |     |                                |           |      |
|     | CARBURETOR- Zama                |           |      |     |                                |           |      |
|     | (Zama C2S-H5)                   | A-96481   | 1    |     |                                |           |      |
| 23  | GASKET- Carburetor              | 65016     | 1    |     |                                |           |      |
| 24  | MANIFOLD- Intake                | A-69373-A | 1    |     |                                |           |      |
| 25  | GASKET- Intake manifold         | 69143     | 1    |     |                                |           |      |
| 26  | LEAD- Ground (Solid state)      | A-94721   | 1    |     |                                |           |      |
| 27  | SCREW- Hex w/washer, 8-32 x 3/4 | 82248     | 2    |     |                                |           |      |
| 28  | MODULE- Ignition (Solid state)  | 94711     | 1    |     |                                |           |      |
|     | Includes:                       |           |      |     |                                |           |      |
|     | LEAD- High tension              |           |      |     |                                |           |      |
|     | (See index #9)                  | 69326     | 1    |     |                                |           |      |
| 29  | TERMINAL- Spark plug            |           |      |     |                                |           |      |
|     | (Solid state) (Note 2)          |           | 1    |     |                                |           |      |

NOTE -1 For solid state ignition cut wire to 6 1/2".

NOTE -2 Use A-33055 for service replacement.

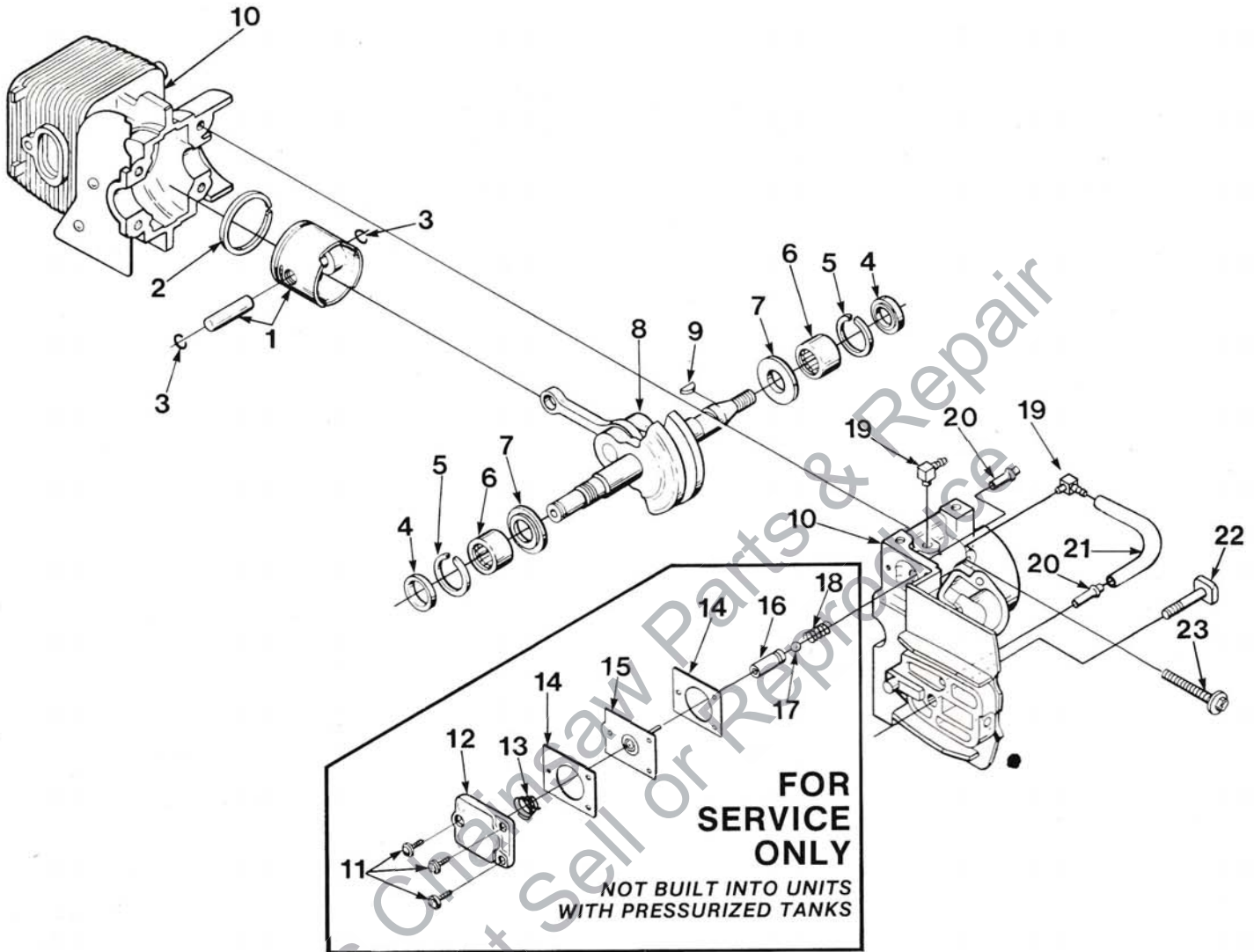
NOTE -3 Retaining ring, 93972 must never be reused once it has been removed. 93972 is required for crankshafts without threaded clutch end.

NOTE -4 Replacement starter pawl kit, item #39 includes an oversized pin. Paint, stamp or mark to identify oversized pin when installing. Oversize pin can be installed tightly only once. If oversized pin is removed, the entire rotor assembly must be replaced.

NOTE -5 Units with separate shield requires index #7 screws. All new muffler caps A-95428 includes a shield welded to cap.

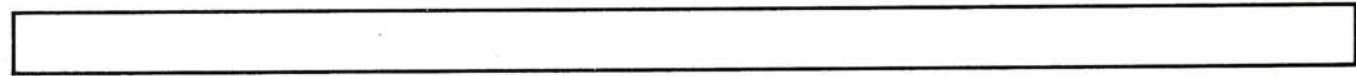
# XL

## FIGURE 3



## FIGURE 3

| No. | Description                           | Part No. | Qty. | No. | Description                    | Part No.  | Qty. |
|-----|---------------------------------------|----------|------|-----|--------------------------------|-----------|------|
| 1   | PISTON & PIN<br>Includes:             | A-69393  | 1    |     |                                |           |      |
| 2   | PISTON RING                           | 69312    | 1    |     |                                |           |      |
| 3   | RING- Piston pin retaining            | 65261    | 2    | 11  | SCREW- Pan hd. (6-32 x 3/8)    | 80571     | 3    |
| 4   | SEAL                                  | 94638    | 2    | 12  | COVER- Oil pump                | 69224-1C  | 1    |
| 5   | SPACER- Seal                          | 69407    | 2    | 13  | SPRING- Oil pump               | 69447     | 1    |
| 6   | BEARING- Needle                       | 12530    | 2    | 14  | GASKET- Oil pump               | 69244-1   | 2    |
|     | BEARING- Needle (Alternate)           | 68513    | 2    | 15  | PLUNGER- Oil pump              | A-12356-B | 1    |
| 7   | WASHER- Thrust                        | 69093-B  | 2    | 16  | BODY- Oil pump                 | 69343-1   | 1    |
| 8   | CRANKSHAFT (Solid state)              | A-96384  | 1    | 17  | BALL- Check valve              | 60051     | 1    |
|     | CRANKSHAFT (Point ignition)           | A-96385  | 1    | 18  | SPRING- Check valve            | 68570     | 1    |
|     | Includes:                             |          |      | 19  | FITTING- Oil line              | 70204     | 2    |
|     | NUT (Not shown)                       | 81112    | 1    | 20  | FITTING- Tube                  | 69833     | 2    |
| 9   | KEY- Magneto (See above)              | 69250    | 1    | 21  | LINE- Oil                      | 70161     | 1    |
| 10  | CYLINDER & CRANKCASE<br>(Solid state) | A-95071  | 1    | 22  | BOLT- Guide bar                | 69195     | 1    |
|     |                                       |          |      | 23  | SCREW- Sems hex hd. (8-32 x 1) | 88044     | 4    |

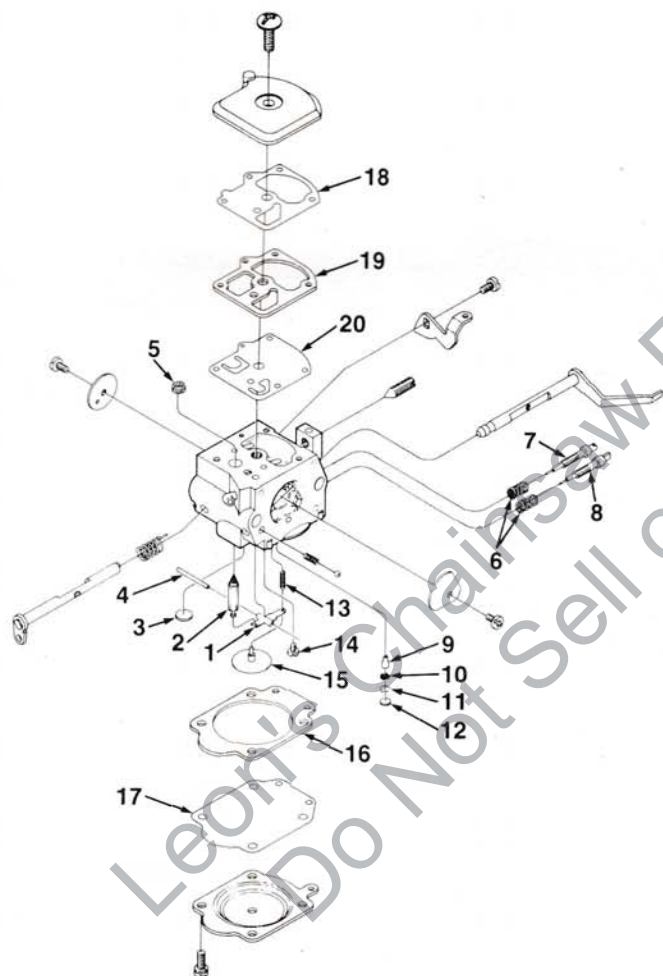


# XL

## FIGURE 4

### ZAMA CARBURETOR C2S-H5

#### A-96481

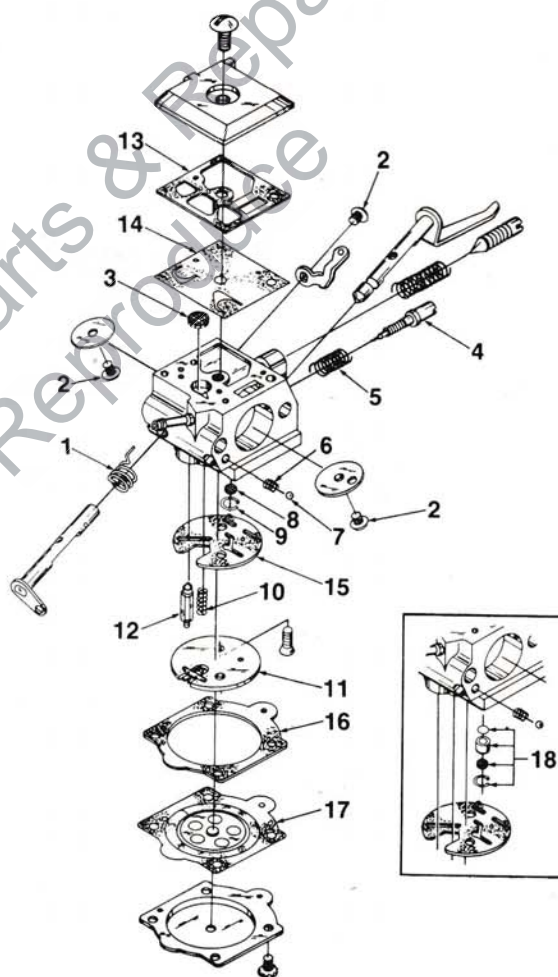


| <u>NO.</u> | <u>DESCRIPTION</u>           |
|------------|------------------------------|
| 96484      | Repair Kit (1-20)            |
| 96485      | Gasket/Diaphragm set (16-20) |

## FIGURE 5

### WALBRO CARBURETOR HDC-65

#### A-94649-A



| <u>NO.</u> | <u>DESCRIPTION</u>                    |
|------------|---------------------------------------|
| 94056      | Repair Kit (Includes 1-17)            |
| 94701      | Gasket/Diaphragm set (Includes 13-17) |
| 93910-A    | Check valve repair kit (18)           |
| 64229      | Inlet Needle (#12)                    |



## ACCESSORIES

| <u>DESCRIPTION</u>  | <u>NO.</u> |
|---|------------|
| GASKET- Oil pump body (Repair)  | 69596      |
| KIT- Repair (Sprocket nose bar)                                       | A-70239-B  |
| KIT- Spark arrestor (used with A-93686 muffler and A-69253-1 Muffler) | A-69586-B  |
| TUBING- Rubber (10 ft length) fuel                                    | 70310-99   |
| TUBING- Rubber (10 ft. length) oil                                    | 70309-99   |
| SAFE•T•TIP (Standard on Unit)   | A-70776-A  |
| Includes:   |            |
| SCREW- (Special)  | 93695      |
| GREASE- Multi-use   |            |
| (Sprocket bearing- PT guide bar)                                      | 17193      |
| CARRYING CASE   | 94215-A    |
| STARTING ROPE- 250 ft. reel #4  | 68848      |

## TOOLS

| <u>DESCRIPTION</u>   | <u>NO.</u> |
|--|------------|
| SILASTIC- (Crankcase sealing)                              | 24823      |
| PLIERS- TRU- ARC<br>(Sprocket retaining ring)              | 17198      |
| PULLER- Magneto rotor                                      | A-24747-A  |
| Includes:  |            |
| BOLT- 5/16-18 x 1 3/4 (1)                                  | 80288      |
| NUT- Hex 5/16-18 (2)                                       | 81196      |
| WRENCH- Spanner (Clutch)                                   | A-93791    |
| Includes:  |            |
| PIN- Clutch spanner (2)                                    | 23717-A    |
| TOOL- Carburetor check valve<br>installation (Walbro only) | 24972      |

### HOMELITE DIVISION OF TEXTRON INC.

P.O. BOX 7047  
14401 CAROWINDS BOULEVARD  
CHARLOTTE, N.C. 28217

**HOMELITE TEXTRON**

Homelite Division of Textron Inc.