

Homelite®

- GB PARTS LIST
- F LISTE DE PIÈCES
- E LISTA DE PIEZAS

- GB MODEL
- F MODELE
- E MODELO

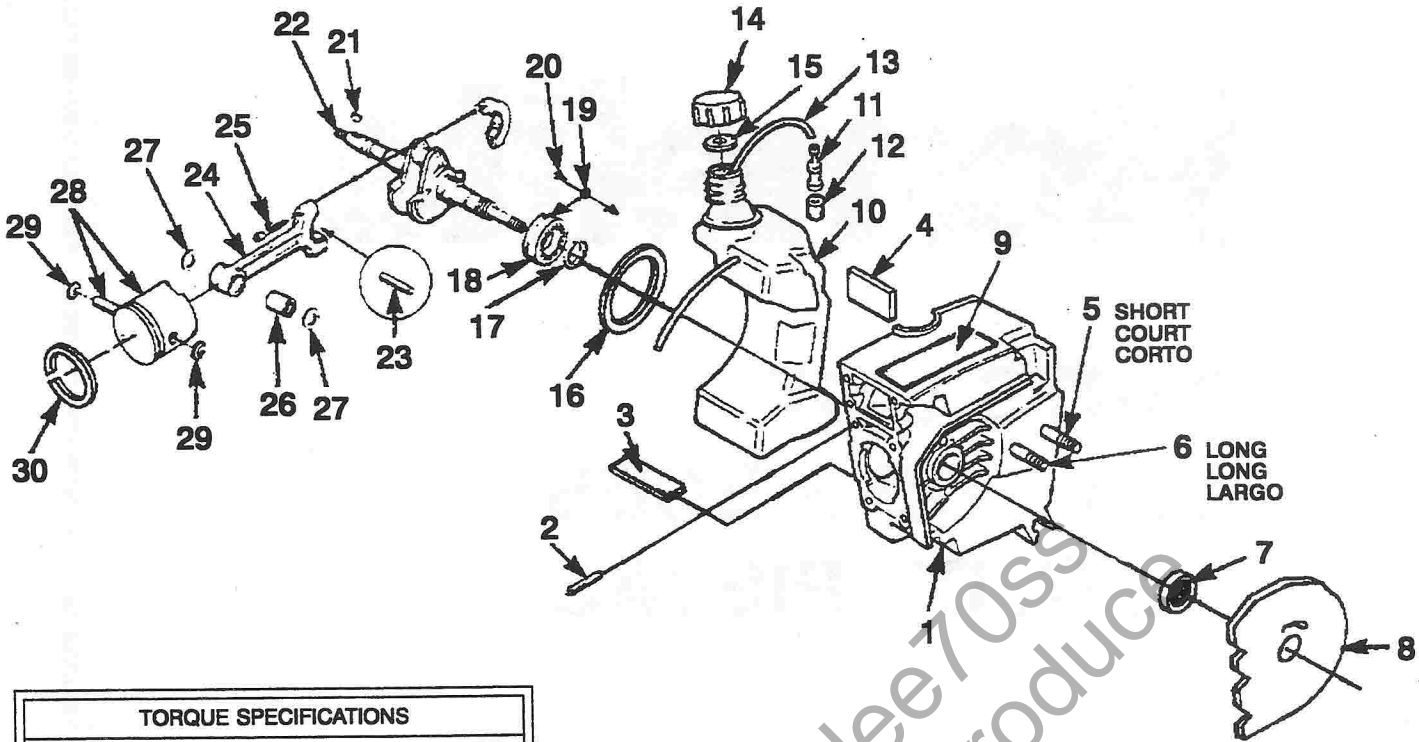
XL98-E
UT05060

- GB MULTI-PURPOSE SAW
- F SCIE À USAGES MULTIPLES
- E SIERRA DE MULTIPLES APLICACIONES

Printed in U.S.A. GB
Imprimé aux U.S.A. F
Impreso en Estados Unidos E

P/N 19845

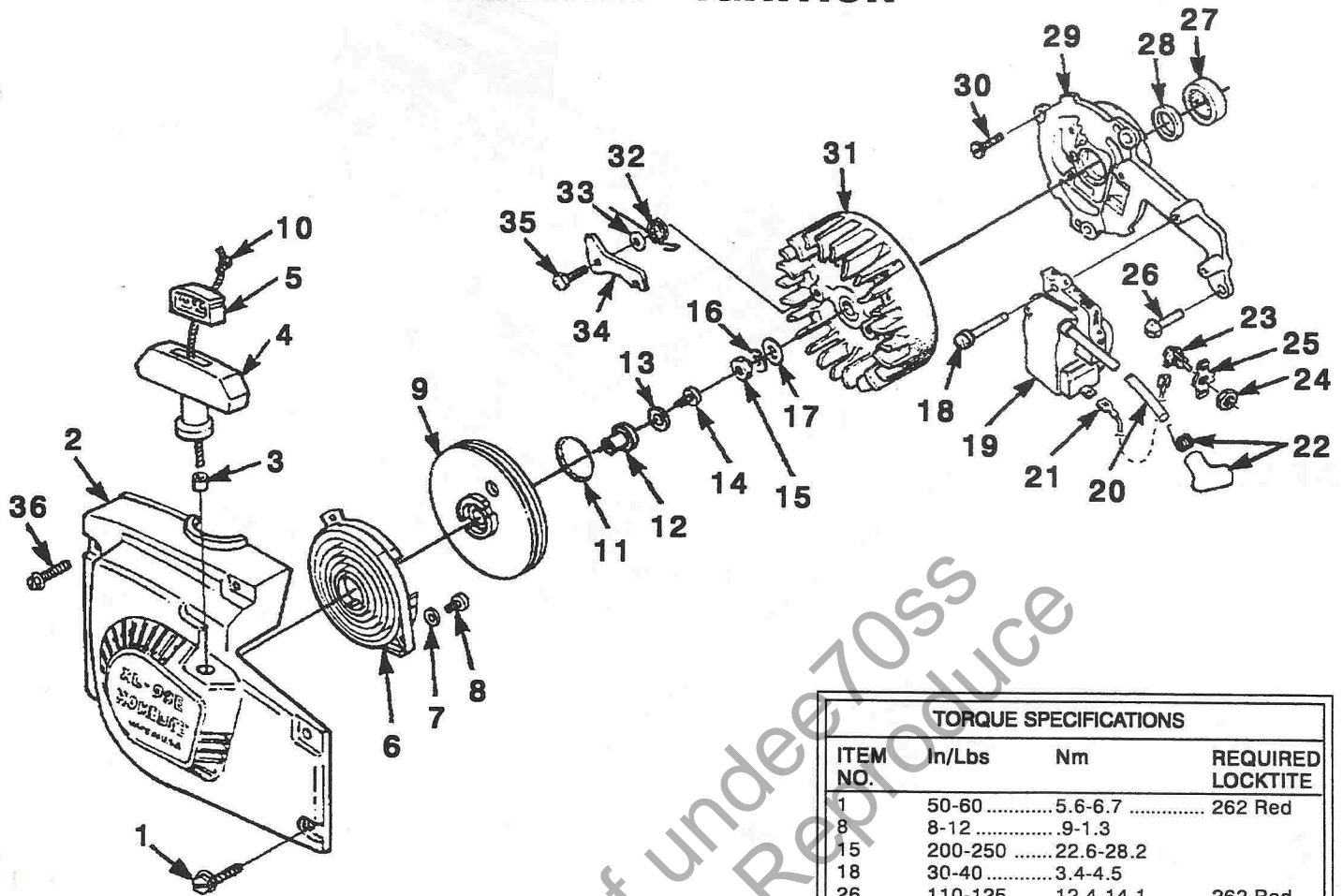
ENGINE INTERNAL - FUEL TANK



TORQUE SPECIFICATIONS			
ITEM NO.	In/Lbs	Nm	REQUIRED LOCKTITE
25	65-70	7.3-7.9	

N	PN	D	Q
1	• A 08335	CRANKCASE	1
2	69438	STUD- Cylinder	4
3	03027	SPACER- Fuel Tank	1
4	03026 A	SPACER- Fuel Tank	1
5	02327	BOLT- (5/16-18 X 2 1/4")	1
6	82595	BOLT- (5/16-18 X 2 1/2")	1
7	12306	SEAL	1
8	64156 A	SAW DUST SHIELD	1
9	46788 A	DECAL- Instruction/Warning	1
10	• A 03498 A	FUEL TANK	1
11	• A 97700	FILTER- Fuel	1
12	59253 1A	ELEMENT- Filter	1
13	93112 5B	TUBING- Rubber (13")	1
14	• A 00982 B	CAP- Fuel	1
15	98805 A	GASKET- Fuel	1
16	67559	"O" RING	1
17	58319 A	RING- Retaining	1
18	58190	BEARING- Ball	1
19	59705	WASHER- Lock	2
20	70306	SCREW- Torx (10-32)	2
21	75078	KEY- Woodruff	1
22	67168 4	CRANKSHAFT	1
23	A 69056	BEARING- Needle	1
24	• A 69658 A	ROD- Connecting	1
25	69919	SCREW- Hex Hd. (8/32 X 1/2")	2
26	69638 A	BEARING	1
27	68010	WASHER	2
28	• A 49314	PISTON & PIN ASSY.	1
29	64742	RING- Retaining	2
30	55537	PISTON RING	1

STARTER - IGNITION



TORQUE SPECIFICATIONS			
ITEM NO.	In/Lbs	Nm	REQUIRED LOCKTITE
1	50-60	5.6-6.7	262 Red
8	8-12	9-1.3	
15	200-250	22.6-28.2	
18	30-40	3.4-4.5	
26	110-125	12.4-14.1	262 Red
30	110-125	12.4-14.1	262 Red
35	70-90	7.9-10.1	
36	50-60	5.6-6.7	262 Red

N	PN	D	Q
1	82555 1	SCREW- Th. Hd. (10-24 X 3/4") Torx (T25)	3
2	• A 03619 A	HOUSING- Starter w/bushing	1
3	67177	BUSHING	1
4	• A 60062 B	GRIP- Starter	1
5	70018 A	INSERT	1
6	A 98067	SPIRING & RETAINER	1
7	84025	WASHER- Flat	2
8	82528	SCREW- Thd. Form. (6-32 X 3/8")	2
9	• A 97990 C	PULLY & CUP	1
10	A 00518	STARTER ROPE	1
11	02525	SPRING- Grip	1
12	97992 A	BUSHING- Starter Rope	1
13	58763	WASHER- Flat	1
14	82409	SCREW- (10 7/8")	1
15	81124 A	NUT- Hex (3/8-24)	1
16	83102	WASHER- Lock (3/8")	1
17	84010	WASHER- Flat (3/8")	1
18	88044	SCREW- Sems Hex hd. (8-32 X 1")	2

N	PN	D	Q
19	• A 96798 A	MODULE- Ignition	1
20	96743	LEAD- High Tension	1
21	A 94850	LEAD- Ground	1
22	A 33055	TERMINAL- Spark Plug	1
23	• A 57650 3B	SWITCH- Grounding	1
24	72084 A1	NUT	1
25	12793 A	PLATE- Indicating	1
26	80052	SCREW- Sems Hex Hd. (1/4-20 X 3/4")	1
27	63195	BEARING- Roller	1
28	12283 A	SEAL	1
29	A 96799 A	PLATE- Back	1
30	80049	SCREW- (1/4-20 X 5/8")	1
31	96801 A	ROTOR	1
32	01101	SPRING- Starter Pawl	1
33	84115	WASHER- Flat	1
34	58756 A	STARTER PAWL	1
35	64054 C	SCREW- Shoulder	1
36	96176	SCREW-Th. Hd. (10-24 X 1.625) Torx (T25)	2

No. N
N°
No.

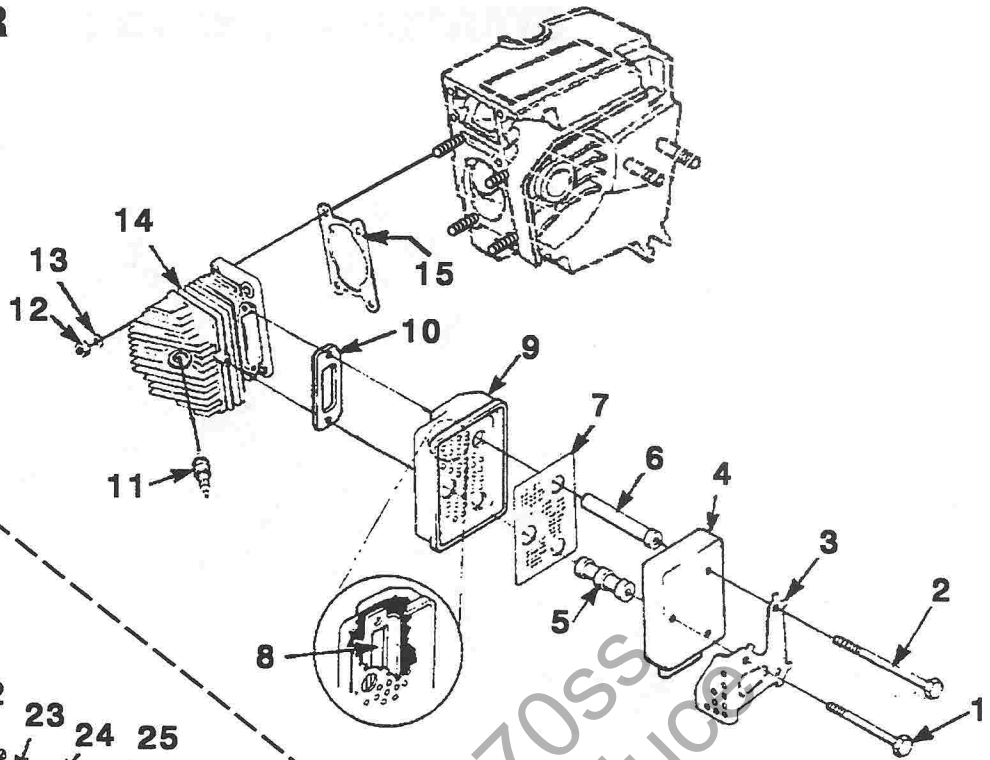
Part No. PN
Pièce N°
No. de pieza

DESCRIPTION D

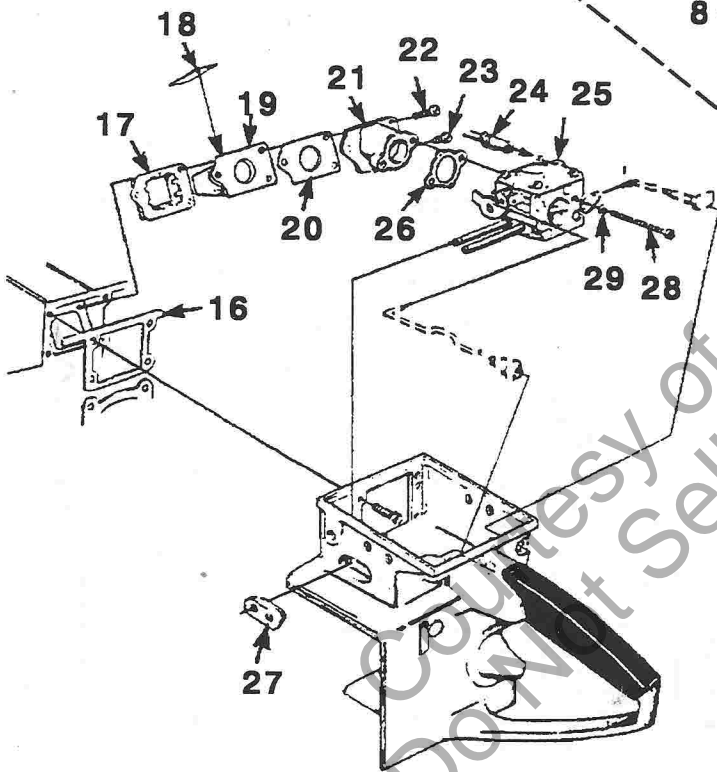
Quantity Q
Quantité
Cantidad

Assemblies
Ensembles
Conjuntos

MUFFLER



CARBURETOR

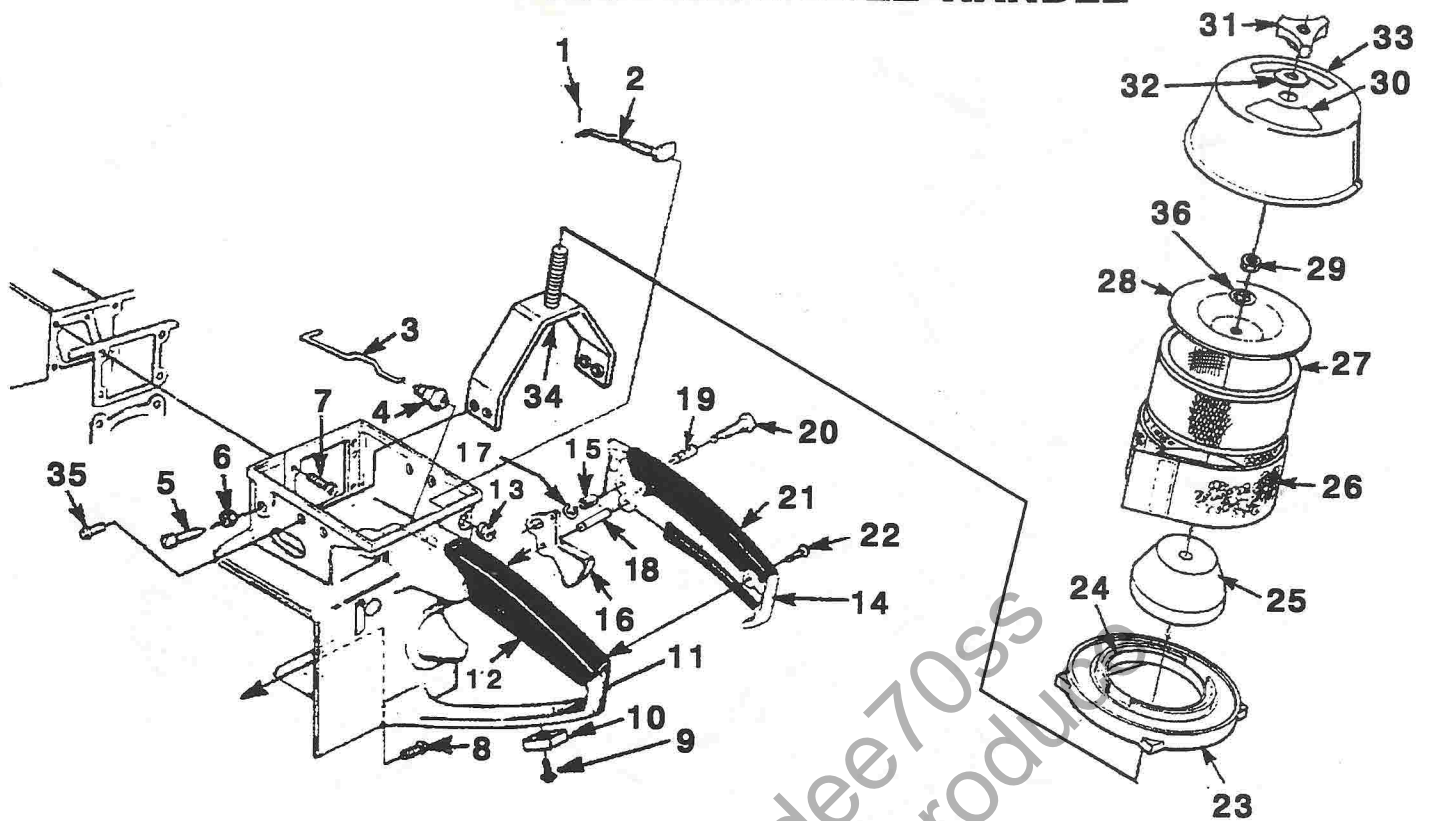


TORQUE SPECIFICATIONS

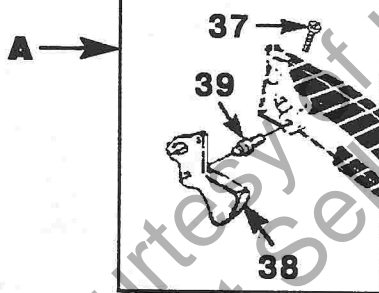
ITEM NO.	In/Lbs	Nm	REQUIRED LOCKTITE
1	100-110	11.3-12.4	
2	100-110	11.3-12.4	
12	100-110	11.3-12.4	
22	20-25	2.3-2.8	242 Blue
23	20-25	2.3-2.8	242 Blue
28	20-25	2.3-2.8	

N	PN	D	Q
1	• A 69864 C	COMPLETE MUFFLER	
1	95885	SCREW- Hex Hd.	1
2	82280	SCREW- Hex Hd. (1/4-20 X 3")	2
3	69842	SHIELD- Muffler	1
4	A 69836 1	CAP- Muffler	1
5	69844	SUPPORT- Short	1
6	69843	SUPPORT- Long	1
7	A 93900 A	SCREEN- Spark Arrestor	1
8	69839	PLATE- Muffler	1
9	A 69838 1	BODY- Muffler	1
10	78098	GASKET- Muffler	1
11	93561 S	SPARK PLUG	1
12	96212	NUT- (1/4-28 X 3/8")	4
13	83009	WASHER- Lock (1/4")	4
14	• A 42206 B	CYLINDER	1
15	63778 1	GASKET- Cylinder	1
16	63779 C	GASKET	1
17	63370 A	RETAINER- Reed	1
18	63166 A	REED- Valve	4
19	63371 B	SEAT- Reed Valve	1
20	65483	GASKET	1
21	A 67460 1	SPACER- Carburetor	1
22	82570	SCREW- (8-32 X 1 1/4")	2
23	82540	SCREW- Thread form. (8-32 X 1 1/4")	1
24	93112 52	FUEL LINE	1
25	• A 07156	CARBURETOR	1
26	67540	GASKET	1
27	69751	GROMMET	1
28	82179	SCREW- (10-32 X 1 7/8")	2
29	83046	WASHER- Lock	2

AIR CLEANER - THROTTLE HANDLE



NOTE 1



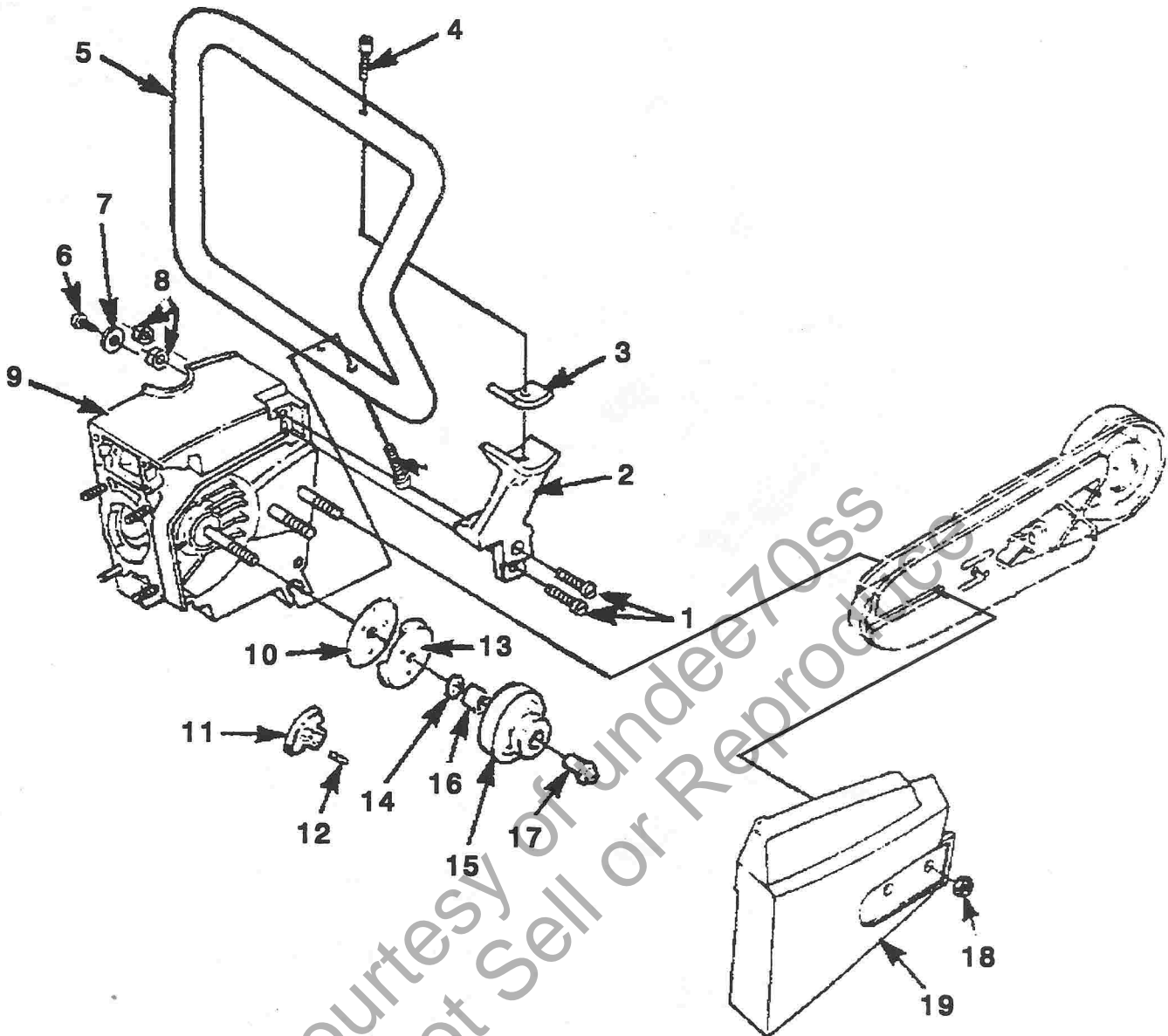
TORQUE SPECIFICATIONS			
ITEM NO.	In/Lbs	Nm	REQUIRED LOCKTITE
6	80-100	9.0-11.3	
7	80-90	9.0-10.2	262 Red
8	80-90	9.0-10.2	262 Red
9	20-30	2.2-3.4	
22	30-40	3.4-4.5	
29	70-90	7.9-10.1	

N	PN	D	Q
1	86324	COTTER PIN	1
2	67201 1	CHOKE ROD	1
3	63266 A	ROD- Throttle	1
4	58348	BOOT- Throttle Rod	1
5	63369 A	SCREW- Idle Adjustment	1
6	81117	NUT- Jam (5/16-24)	1
7	80676	SCREW- Hex hd. (12-24 X 5/8")	4
8	80891	SCREW- Hex hd. (12-24 X 7/8")	1
9	88049	SCREW- (10-24 X 1/2")	1
10	49686 1	PAD- Wear	1
11	A 01845	HANDLE- Throttle	1
12	68767	GRIP- Throttle Handle	1
13	64862	GROMMET	1
14	• A 69045 A	COVER- Throttle Handle	1
15	59064	BUSHING	1
16	58859 A	TRIGGER (*NOTE 1)	1
17	59409	RING- Retaining	1
18	68548	PIN- Trigger (*NOTE 1)	1
19	58405	SPRING- Throttle lock	1
20	95671	PIN- Throttle	1
21	68768	GRIP- Throttle Handle	1
22	80560	SCREW- Pan hd. (8-32 X 1/2")	2
23	• A 49556 C	AIR FILTER KIT	1
24	• A 50952 B	RING & GASKET ASSY.	1
25	50951	GASKET	1
26	49786	FILTER- Air	1
27	49213	PRE FILTER- Felt	1
28	54620 B	ELEMENT- Air Filter	1
29	49212	COVER- Filter Element	1
30	81162	NUT- Hex (5/16-18)	1
31	A 49687	DECAL- Warning	1
32	06365	KNOB-Handle	1
33	02762 A	GASKET	1
34	49263	DECAL- Instruction	1
35	• A 03498	BRACKET- Cover	1
36	03498	SCREW	4
37	46072	GASKET	1

* NOTE 1: UNITS BEFORE S/N HS0840001, SEE INSET A

A	PN	D	Q
37	80023 2	SCREW- (8-32 X 5/8")	1
38	65745	TRIGGER	1
39	65719	PIN	1

HANDLE - CLUTCH

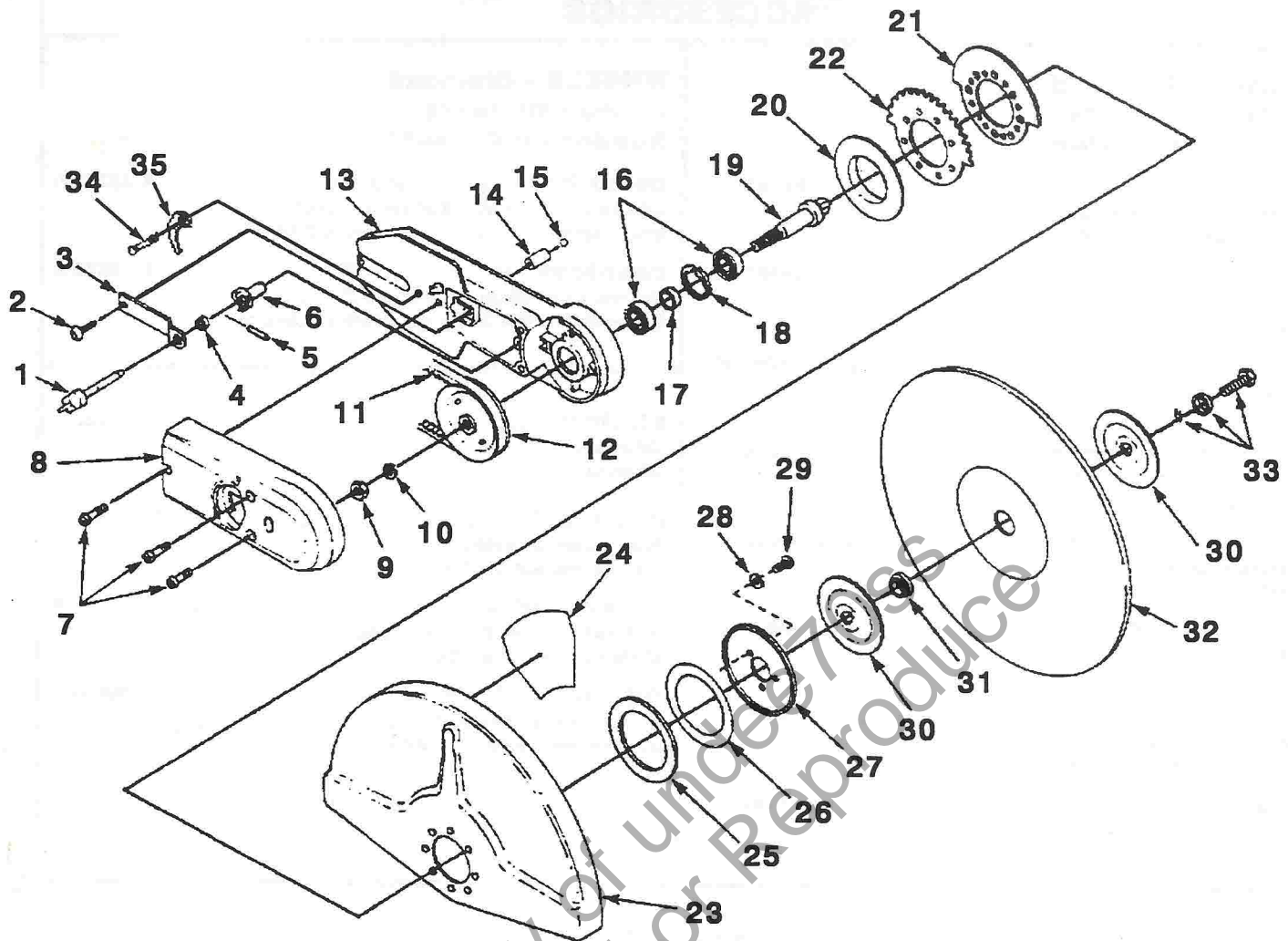


Courtesy of Undee70ss
Do Not Sell or Reproduce

TORQUE SPECIFICATIONS			
ITEM NO.	In/Lbs	Nm	REQUIRED LOCKTITE
1	80-90	9.0-10.1	262 Red
18	Hand Tight		

N	PN	D	Q
1	80891	SCREW- Hex hd. (12-24 X 7/8")	2
2	69829 2	BRACKET- Handle bar	1
3	51163	MOUNT- Shock (bracket)	1
4	80428 1	SCREW- Nylock (1/4-20 X 1")	3
5	A 49680 1	HANDLE BAR	1
6	80939	SCREW- Pan hd.	1
7	95935	WASHER	1
8	81225	NUT- Hex (12-24)	2
9	A 08335	CRANKCASE	1
10	93628	COVER- Clutch	1
11	A 69480 C	CLUTCH ASSEMBLY	1
12	67053	SPRING- Clutch	3
13	65760 1B	PLATE- Clutch	1
14	59933	WASHER- Thrust (Inner)	1
15	• A 49224	PULLEY- Bearing & Arm	1
16	51151	BEARING- Needle	1
17	A 97901 A	INNER RACE KIT	1
18	81282	NUT- Hex Flange (5/16-18)	1
19	53579 7	COVER- Drivecase	1

WHEEL ARM ASSEMBLY



N	PN	D	Q
1	• A 00660	KNOB & PIN	1
2	96620 1	SCREW-Truss Hd. (10-24 X 1/2")	1
3	01923	PLATE-Spring	1
4	01922	SPACER-Adjusting Pin	1
5	JA 46135 9	PIN-Roll	1
6	01921	SLEEVE-Cam	1
7	95792	SCREW-Round Hd. (10-24 X 23/32")	3
8	07704	BELT-Cover	1
9	02423	NUT-Hex	1
10	JA 44614 8	WASHER-Lock (7/16)	1
11	46068	BELT- V-Drive	1
12	A 02891	PULLEY & HUB	1
13	07656 3A	ARM-Wheel	1
14	02267	SNUBBER	1
15	00568	STEEL BALL	1
16	63107	BEARING-Ball	2
17	01916	SPACER-Bearing	1
18	31746	RING-Retaining	1
19	01906 1	SHAFT-Wheel	1
20	01915	COLLAR-Wheel Guard	1
21	01914 A	PAD-Adjuster	1
22	01913	DETENT-Adjuster	1
23	• A 04647 A	WHEEL GUARD & DECAL / 12"	1
24	04645 A	DECAL-Caution	1
24	• A 07696 A	WHEEL GUARD & DECAL / 14"	1
24	04645 A	DECAL-Caution	1

TORQUE SPECIFICATIONS			
ITEM NO.	In/Lbs	Nm	REQUIRED LOCKTITE
2	50-60	5.6-6.8	RED 262
7	30-40	3.4-4.5	
9	480-600	54-68	RED 262
29	50-60	5.6-6.8	RED 262
33	200-240	23-27	
34	130-170	15-19	

N	PN	D	Q
25	01912	WASHER-Rubber	1
26a	01911 01	SHIM-.020"	1
26b	01911 02	SHIM-.030" (Alt. Part)	0
27	01910	WASHER-Spring	1
28	95935	WASHER (#12 - 11/16)	3
29	96620 1	SCREW-Truss Hd. (10-24 X 1/2")	3
30	01909 1A	FLANGE-Wheel	1
31	01902	SPACER (1")	1
	01903	SPACER (22mm)	1
	01907	SPACER (20mm)	1
32	*	WHEEL	1
33	A 03412	BOLT & WASHER	1
34	80087	SCREW- Hex hd. (5/16-18 X 1 1/2")	1
35	A 49194	CAM & ADJUSTER	1

* See Page 8.
 * Voir page 8.
 * Consulte la Página 8.

ACCESSORIES

ACCESSOIRES

ACCESORIOS

WHEELS - Resinoid

Roues - Resinoïde

Ruedas tipo resina

METAL - (12" x 1") 64597 BS

Métal - (30,48cm x 2,54cm)

Metal - (30,48cm x 2,54cm)

DUCTILE - (12" x 1") 68421 AS

Ductile - (30,48cm x 2,54cm)

Dúctil - (30,48cm x 2,54cm)

CONCRETE - (12" x 1") 64596 BS

Béton - (30,48cm x 2,54cm)

Concreto - (30,48cm x 2,54cm)

CONCRETE - (12" x 20mm) 49826

Béton - (30,48cm x 0,2cm)

Concreto - (30,48cm x 0,2cm)

DUCTILE - (12" x 20mm) 49825

Ductile - (30,48cm x 0,2cm)

Dúctil - (30,48cm x 0,2cm)

METAL - (12" x 20mm) 49824

Métal - (30,48cm x 0,2cm)

Metal - (30,48cm x 0,2cm)

DUCTILE - (14" x 1") 49560

Ductile - (35,56cm x 2,54cm)

Dúctil - (35,56cm x 2,54cm)

METAL - (14" x 1") 49561

Métal - (35,56cm x 2,54cm)

Metal - (35,56cm x 2,54cm)

WHEELS - Diamond

Roues - Diamant

Ruedas de diamante

CONCRETE - (12" x 1 / 8" x 1") A 49751 A

Béton - (30,48cm x 0,31cm x 2,54cm)

Concreto - (30,48cm x 0,31cm x 2,54cm)

CONCRETE - (14" x 1 / 8" x 1") A 49572 A

Béton - (35,56cm x 0,31cm x 2,54cm)

Concreto - (35,56cm x 0,31cm x 2,54cm)

SILASTIC : 24823

Silastic

Silastic

DOLLY KIT : UT05032 B

Jeu pour chariot

Juego de carretilla

CARRY CASE w / Insert : A 18009 A

Boîtier porteur avec insertion

Meleta con inserto

WET CUTTING KIT : A 49649

Jeu pour découpe humide

Juego de corte líquido

TOOLS

OUTILS

HERRAMIENTAS

SHIM - Air Gap : 24306

Calé - Couche d'air intermédiaire

Calce - Intervalo de aire

BIT - Torx 1/4" Shank : 24982 01

Mèche Torx avec tige de (6mm)

Broca torx con vastago de (6mm)

BIT - Torx 5/16" Shank : 24982 02

Mèche Torx avec tige de (8mm)

Broca torx con vastago de (8mm)

PULLER - Rotor : A 24544A

Extracteur de rotor

Extractor de rotor

WHEEL ARM Complete :

BRAS DE SUPPORT DE LA ROUE

BRAZO DE LA RUEDA

12" X 1" (305mm x 25.4mm) A 08337

14" X 1" (356mm x 25.4mm) A 08338

SCREW DRIVER : 24541

Tournevis

Destornillador

WRENCH - Combination (1/2", 3/4", Screwdriver) 19188

Clé combiné

Llave combinada

WRENCH - Clutch Spanner : A 23934

Clé à griffe d'embrayage

Llave de apretar tuercas para el embrague

WRENCH - 1/2" Forged : 03000

Clé en acier forgé de 1/2 pouce

Llave - Foujado (1,27 cm)

GB NOTES

F NOTES

E NOTAS

XL98-E

UT05060

Courtesy of undee70ss
Do Not Sell or Reproduce

CUSTOMER ASSISTANCE

FOR THE LOCATION OF YOUR
NEAREST HOMELITE SERVICING
DEALER IN THE UNITED STATES,
PUERTO RICO, AND
THE VIRGIN ISLANDS,

CALL:

1-800-242-4672

HEADQUARTERS

Homelite, Inc.
P.O. BOX 7047
CHARLOTTE, N.C. 28241

OVERSEAS OFFICES

EUROPE, AFRICA & MIDDLE-EAST

Homelite Netherlands B.V.
A Deere & Company Affiliate
Haverstraat 24
2153 GB Nieuw Vennepe
The Netherlands

FRANCE

Homelite Atlantic SARL
Groupe Deere & Co.
BP 7011
95050 Cergy Pontoise Cedex
France

AUSTRALIA

Homelite Pacific Ltd.
A Deere & Company Affiliate
ACN 008 683 538
94 Rushdale Street
P.O. Box 555 MDA
Australia

CANADIAN OFFICES

Homelite Canada Limited
Homelite Canada Limitée

A Deere & Company Affiliate/
Une Filiale de Deere & Company
1850-55e/th Avenue
Lachine, Québec, Canada H8T 3J5
1-800-363-5715

UNIT 212-214, 590 Ebury Place
New Westminster, B.C. V3M 6K7
1-800-667-3128

20-D Voyager Court South
Etobicoke, Ontario M9W 5M7
1-800-465-2249

Homelite inc.

A Subsidiary of Deere & Company

INSTALLATION INSTRUCTIONS FOR MULTIPURPOSE SAW DOLLY KIT #UT-05032-B (For Models XL-98A, XL-98C, XL-98D, MP-38, MP-88, DM-54, DM-50, DM-40 and DM-20)

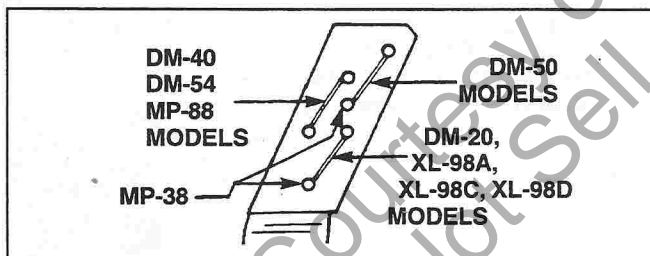
DOLLY ASSEMBLY

1. Place the handlebar on the dolly with the threaded hole on the right hand side. (See illustration 5.) Install the 5/16-18 x 1 1/2 inch bolt through the handlebar and secure with the lock washer and nut.
2. Remove the packaging tape from the handlebar. Route the throttle cable as illustrated and assemble the throttle lever to the handlebar with the 1/4-20 x 1 1/2 inch bolt and lock nut. Do not overtighten and cause the throttle lever to bind.
3. Mount the upper cable clamp to the handlebar with the hex head screw and lock washer provided in the handlebar. Mount the lower cable clamp (using a 10-32 x 3/8 inch hex head screw and lock washer) to the trigger lever plate in the proper hole for your unit.
4. Install the two "J" bolts in the dolly (see illustration 3 for the proper holes for your unit) using a flat washer, a lock washer and two 1/4-20 nuts on each bolt.

See "Mounting Instructions" for your type of saw.

MOUNTING INSTRUCTIONS

NOTE: Before mounting the saw to the dolly, be sure that the trigger lever shoulder bolt and the cable clamp mounting screw are in the proper holes. The lower hole of the pair is always used for the trigger lever shoulder bolt and the upper hole is used to mount the cable clamp. See illustration to determine which set of holes is to be used for your unit.



When mounting the DM-40 and the DM-50, the cable clamp must be rotated approximately 45 degrees off the vertical and securely fastened. (See illustration 4.)

SET CLAMP IN VERTICAL POSITION FOR DM-20, XL-98A, XL-98C, & XL-98D

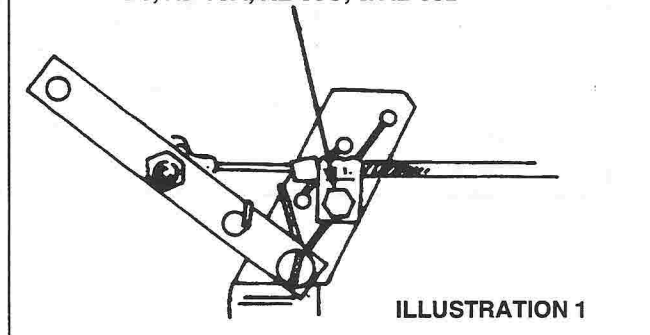


ILLUSTRATION 1

XL-98A MODELS:

1. Place the rear handle brace between the clamping bolt and the dolly. Locate the front handlebar against the two rear pins on the lower mounting plate. (See illustration 3.)
2. Install the "J" bolts over the handlebar and through the lower mounting plate in the locations shown in illustration 2.
3. Tighten the nut on the "J" bolt securely against the lock washer and the flat washer. Tighten the jam nut to prevent loosening of the "J" bolt.
4. Screw the 1/4-20 x 1 1/2 inch clamping bolt against the rear handle brace securely. Tighten the jam nut to secure the bolt.

DM-50 MODELS:

1. Place the rear handle brace between the clamping bolt and the dolly. Locate the foot support on the bottom of the unit between the two pins on the lower mounting plate (see illustration 3).
2. Install the "J" bolts over the handlebar and through the lower mounting plate in the outer set of holes. It may be necessary to remove rubber padding from the handlebar so the "J" bolts are pulling on metal.
3. Tighten the nut on the "J" bolt securely against the lock washer and flat washer. Tighten the jam nut to prevent loosening of the "J" bolt.
4. Screw the 1/4-20 x 1 1/2 inch clamping bolt against the rear handle brace securely. Tighten the jam nut to secure the bolt.

DM-40 MODELS:

1. Place the rear handle brace between the clamping bolt and the dolly. Locate the lower handlebar supports in the two outer holes on the lower mounting plate. (See illustration 3.)
2. Install the "J" bolts over the handlebar and through the lower mounting plate in the outer set of holes.
3. Tighten the nut on the "J" bolt securely against the lock washer and flat washer. Tighten the jam nut to prevent loosening of the "J" bolt.
4. Screw the 1/4-20 x 1 1/2 inch clamping bolt against the rear handle brace securely. Tighten the jam nut to secure the bolt.
5. Wrap the velcro strap around the handle to hold down the trigger lock.

DM-20 MODELS:

1. Place the rear handle brace between the clamping bolt and the dolly. Locate the foot support in the two inner holes on the lower mounting plate. (See illustration 3.)
2. Two large washers are needed between the mounting plate and the saw handlebar to hold the saw level. Install the "J" bolts over the handlebar through the two large washers, and through the lower mounting plate in the locations shown in illustration.
3. Tighten the nut on the "J" bolt securely against the lock washer and flat washer. Tighten the jam nut to prevent loosening of the "J" bolt.
4. Screw the 1/4-20 x 1 1/2 inch clamping bolt against the rear handle brace securely. Tighten the jam nut to secure the bolt.

DM-54, XL-98C, XL-98D, MP-38 and MP-88

1. Drive the four spiro pins through the lower mounting plate so that they are flush with top of plate.
2. Place the rear handle brace between the clamping bolt and the dolly. Locate the front handlebar against the front edge of lower mounting plate.
3. Install the "J" bolts over the handle bar and through the innermost set of slots. (See illustration 3.)
4. Tighten nuts on the "J" bolts securely against the lock washers and flat washers. Tighten jam nuts to prevent loosening of the "J" bolts.
5. Screw the 1/4-20 x 1 1/2 inch clamping bolt against the rear handle brace securely. Tighten the jam nut to secure the bolt.

6. On the DM-54, MP-88 and MP-38, install Velcro strap around the handle to hold down the trigger lock.

THROTTLE ADJUSTMENT

1. After the saw is secured to the dolly, adjust the socket head screw so the head of the screw is in the center of the trigger. Tighten the locking nut but be sure the screw does not move. Use the Velcro strap to hold the trigger lock on DM-40, MP-38 and DM-55 models.
2. Adjust the lock nut on the cable at the throttle lever so that when the lever is pulled back against the handle grip the trigger on the saw is at full throttle. (To avoid breaking the throttle cable do not overstress the throttle cable and linkage on the dolly.)

ILLUSTRATION 2

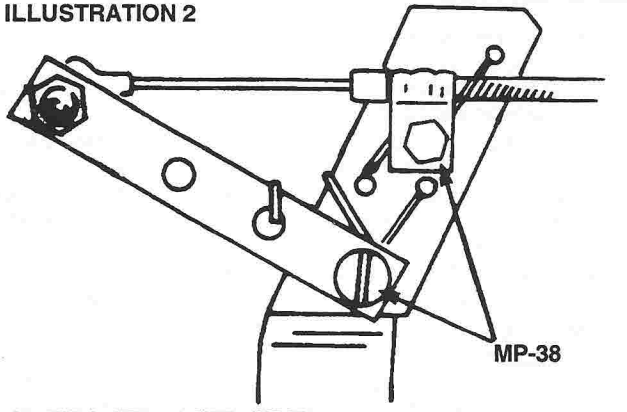


ILLUSTRATION 4

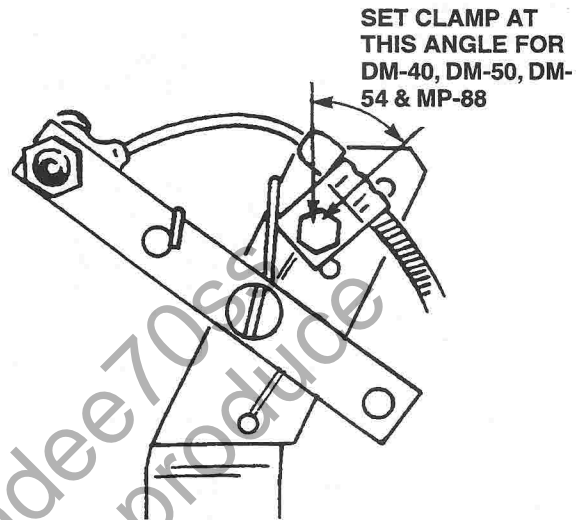


ILLUSTRATION 3

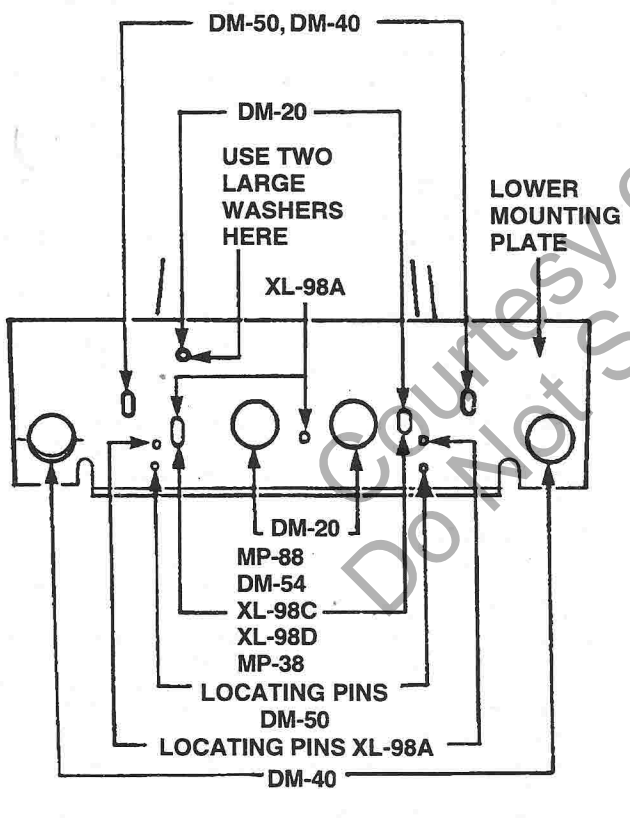


ILLUSTRATION 5

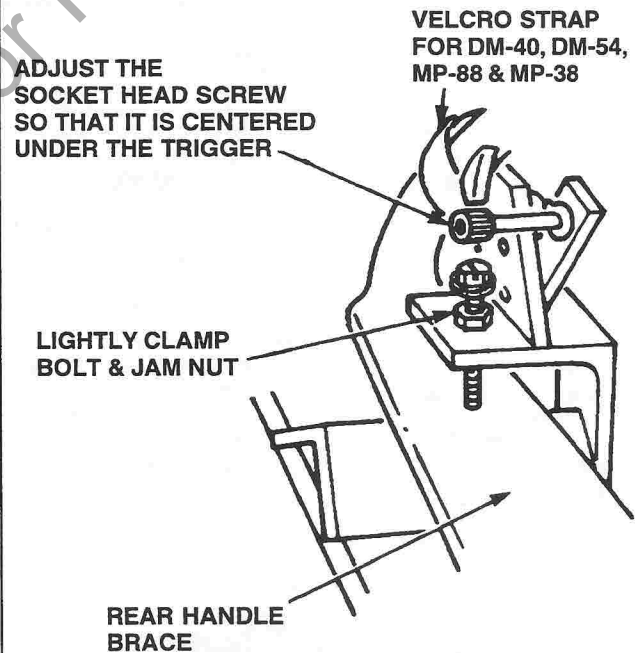
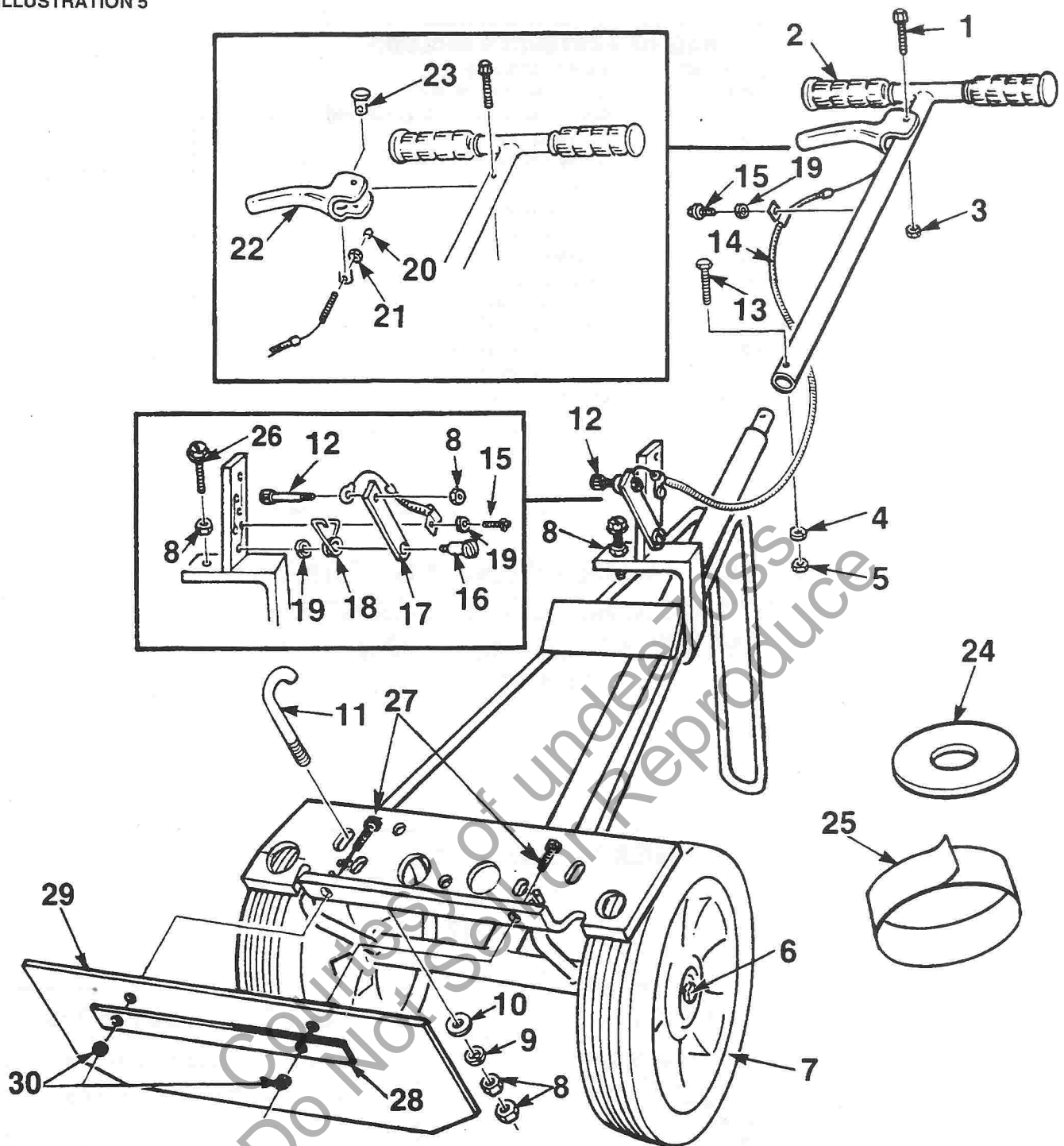


ILLUSTRATION 5



NO.	DESCRIPTION	PART NO.	QTY.	NO.	DESCRIPTION	PART NO.	QTY.
1	SCREW- Hex Head (1/4-20 X 1 1/2")	82278	1	16	SCREW- Shoulder (#10-32)	63855-A	1
2	GRIP- Handle	04601	2	17	PLATE- Trigger Lever	49248-A	1
3	NUT- Lock (1/4-20)	81204	1	18	SPRING- Return	49247	1
4	WASHER- Lock (5/16")	83003	1	19	WASHER- Lock (#10)	83006	3
5	NUT- Hex (5/16-18)	81018	1	20	CAP	49308	1
6	AXLE- Wheel	JA-99213-8	2	21	NUT- Lock (#10-24)	81256	1
7	WHEEL/TIRE ASSEMBLY	JA-99395-8	2	22	LEVER- Throttle	49249	1
8	NUT- Hex (1/4-20)	81267	6	23	SWIVEL	JA-99025-8	1
9	WASHER- Lock (1/4")	83009	2	24	WASHER (for DM-20)	84028-1	2
10	WASHER- Flat (1/4")	84020	2	25	STRAP- Velcro	49309	1
11	"J"BOLT	49251	2	26	SCREW- Hex Head (1/4-20x1 1/2")	80882	1
12	SCREW- Socket Head Cap (1/4-20 x 2")	80295	1	27	SCREW- Hex sems (8-32 x 5/8")	88043	2
13	SCREW- Hex Head (5/16x18x11/2")	80087	1	28	STRIP- Metal	49899	1
14	CABLE- Throttle	49246	1	29	SKIRT-Rubber	49819-A	1
15	SCREW- Sems Hex Head (10-32 x 3/8")	80870	2	30	NUT- Centerlock #8-32	81223	2

BAG OF FASTENERS INCLUDE:

QTY.	PART NO.	DESCRIPTION
1	80882	Screw, Hex Hd. (1/4-20 x 1 1/2)
1	82278	Screw, Cap Head (1/4-20 x 1 1/2 inch)
1	81204	Lock Nut (1/4-20)
1	80087	Screw, Cap Hex Head (5/16-18 X 1 1/2 inch)
2	49251	"J" Bolt
2	84020	Washer (1/4 inch)
5	81267	Nut, Hex (1/4-20)
1	81018	Nut, Hex (5/16-18)
1	49309	Velcro Strap
1	83003	Lock Washer (5/16)
2	83009	Lock Washer (1/4 inch)
2	84028-1	Washer (Use with DM-20)
1	80870	Screw, Hex Hd (10-32 x 3/8)
1	83006	Lock Washer (#10)

**CONSULT YOUR OWNER'S MANUAL
FOR OPERATION, MAINTENANCE AND
SAFETY PROCEDURES FOR YOUR
UNIT.**

HEADQUARTERS

Homelite, Inc.
P.O. BOX 7047
CHARLOTTE, N.C. 28241

OVERSEAS OFFICES

EUROPE, AFRICA & MIDDLE-EAST

Homelite Netherlands B.V.
A Deere & Company Affiliate
Haverstraat 24
2153 GB Nieuw Vennep
The Netherlands

FRANCE

Homelite Atlantic SARL
Groupe Deere & Co.
BP 7011
95050 Cergy Pontoise Cedex
France

AUSTRALIA

Homelite Pacific Ltd.
A Deere & Company Affiliate
ACN 008 683 538
94 Rushdale Street
P. O. Box 555 MDA
Knoxfield Vic 3180
Australia

CANADIAN OFFICES

Homelite Canada Limited

Homelite Canada Limitée

A Deere & Company Affiliate /
Une Filiale de Deere & Company
1850-55e/th Avenue
Lachine, Québec, Canada H8T 3J5
1-800-363-5715

UNIT 212-214, 590 Ebury Place
New Westminster, B.C. V3M 6K7
1-800-667-3128

20-D Voyager Court South
Etobicoke, Ontario M9W 5M7
1-800-465-2249

Homelite inc.
A Subsidiary of Deere & Company