

# HOMELITE®

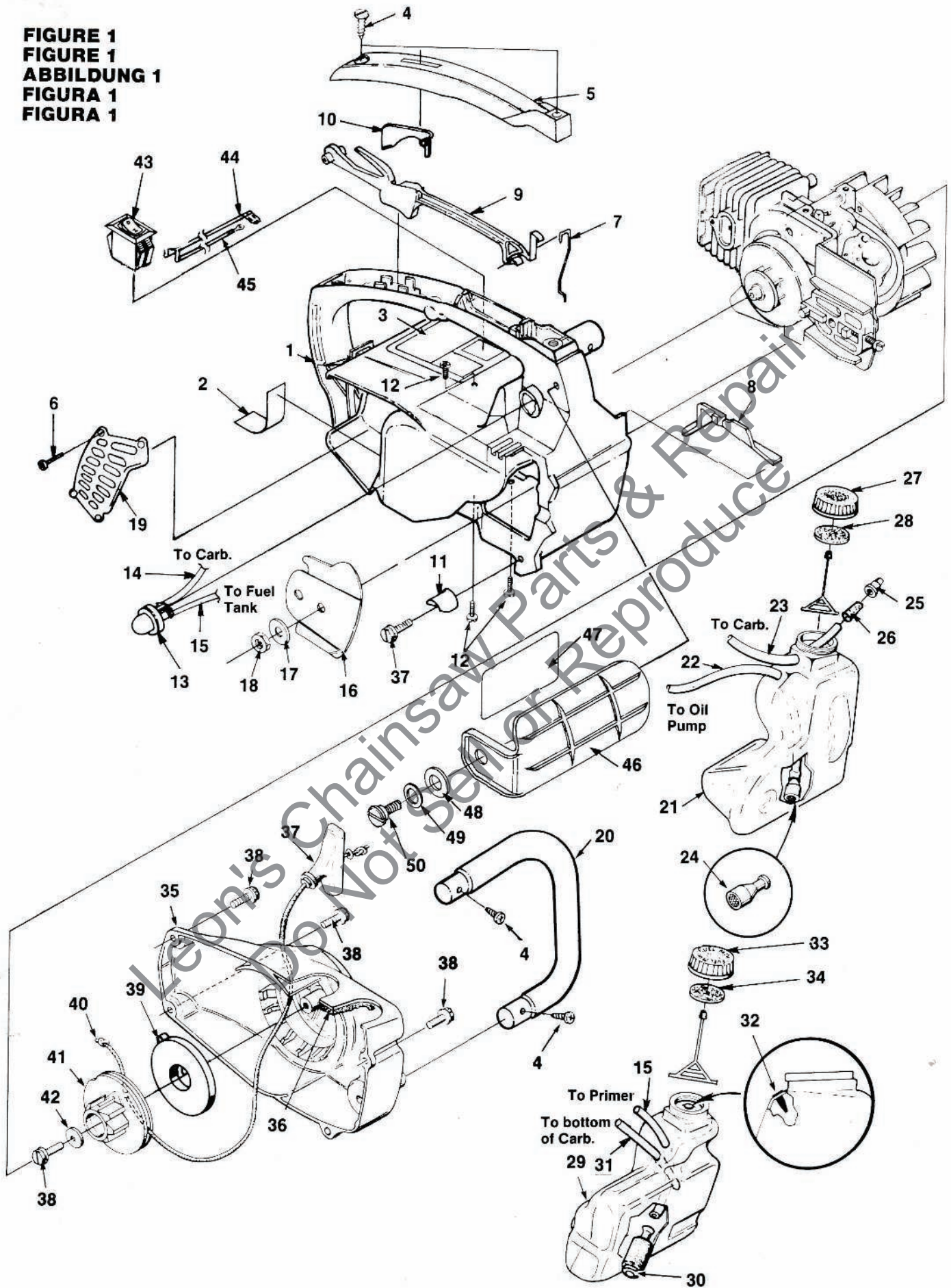
- ⓐ PARTS LIST
- ⓑ LISTE DE PIÈCES
- Ⓓ TEILELISTE
- Ⓔ LISTA DE PIEZAS
- ⓐ ELENCO DELLE PARTI

## XL SUPER 2



Printed in U.S.A.  
Imprimé aux E.-U.  
Gedruckt in U.S.A.  
Impresso en EE.UU.  
Stampato negli Stati Uniti  
**P/N 18663**

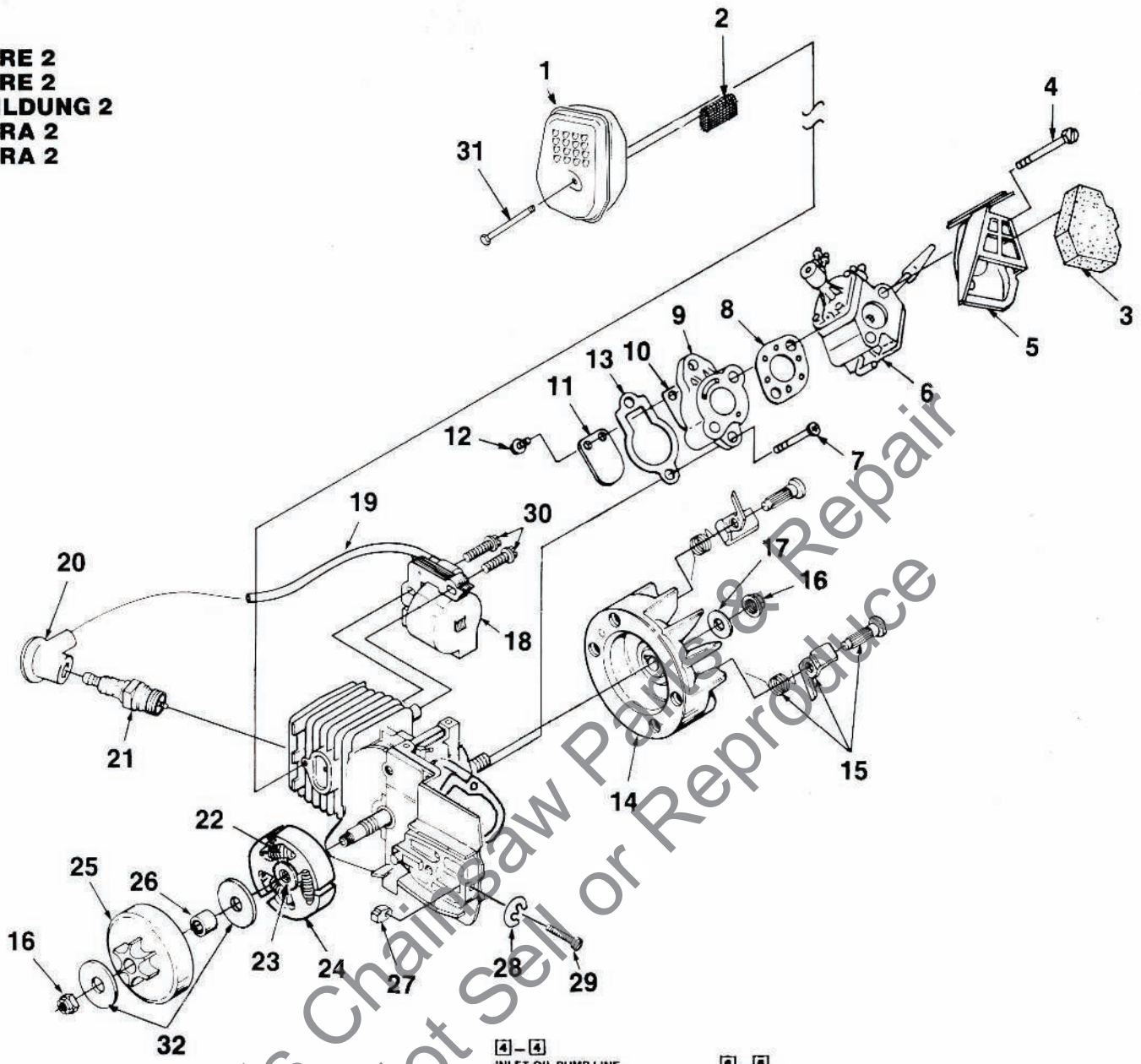
**FIGURE 1**  
**FIGURE 1**  
**ABBILDUNG 1**  
**FIGURA 1**  
**FIGURA 1**



No. No. Nr. No. N°	Part Number No. de Pièce Best.—Nr. No. de Pieza Pezzo N°	Description	Qty. Qté Menge Cant. Qta
1	• A-03058	HOUSING- Engine	1
2	02640	TAPE	1
3	02490	DECAL	1
	03271	DECAL	1
		(International Only)	
4	94065	SCREW- Pan, plastite (#10-16 x 3/4")	4
5	02495	COVER- Handle	1
6	82528	SCREW- Pan plastite (#6-3/8")	4
7	02501	ROD- Throttle	1
8	02481	COVER- Air filter	1
9	02492-A	TRIGGER	1
10	02493	LOCK- Trigger	1
11	95212	STOP- Chain	1
12	82538	SCREW- Torx, taptite (#10-24 x 3/4")	4
13	02487	PRIMER BULB	1
14	01439-12	TUBING- Inlet (3")	1
15	70310-30	TUBING- Return (7")	1
16	69360-A	PLATE- Guide bar	1
17	69309-A	WASHER- Flat	1
18	81065-2	NUT- Hex	1
19	02765	SHIELD- Muffler	1
20	02496	HANDLE BAR	1
21	• A-02763	TANK- Oil	1
22	70310-36	TUBING- (9")	1
23	70310-19	TUBING (4 3/4")	1
24	A-68593	FINDER- Oil	1
25	98819	VALVE- Check	1
26	01327	FITTING- Oil line	1
27	• A-97230-A	CAP- Oil	1
28	94494	GASKET- Cap	1
29	• A-02764	TANK- Fuel	1
30	49422	FILTER- Fuel	1
31	70310-22	LINE- Fuel (5 1/2")	1
32	98819	VALVE- Check	1
33	• A-97230-A	CAP- Fuel	1
34	94494	GASKET- Cap	1
35	• A-02562-B	STARTER HOUSING ASSY.	1
36	69443	FILTER	1
37	02264	GRIP- Starter	1
38	82563	SCREW- Torx, plastite (#10 x 3/4")	6
39	A-97908	SPRING & CONTAINER	1
40	97899-01	ROPE- Starter	1
41	97768-A	PULLEY- Starter	1
42	94062	WASHER- Retaining	1
43	02497	SWITCH	1
44	A-02482	LEAD- w/Flag Term.	1
45	A-02484	LEAD- w/Ring Term.	1
46	• A-70796-C	HANDGUARD KIT	1
47	02661	DECAL- Handguard	1
48	95694	WASHER- Curve spring	1
49	96102	WASHER- Flat	1
50	95714	SCREW- Shoulder	1

- Assemblies
- Ensemble
- Bausätze
- Complessi
- Conjunto

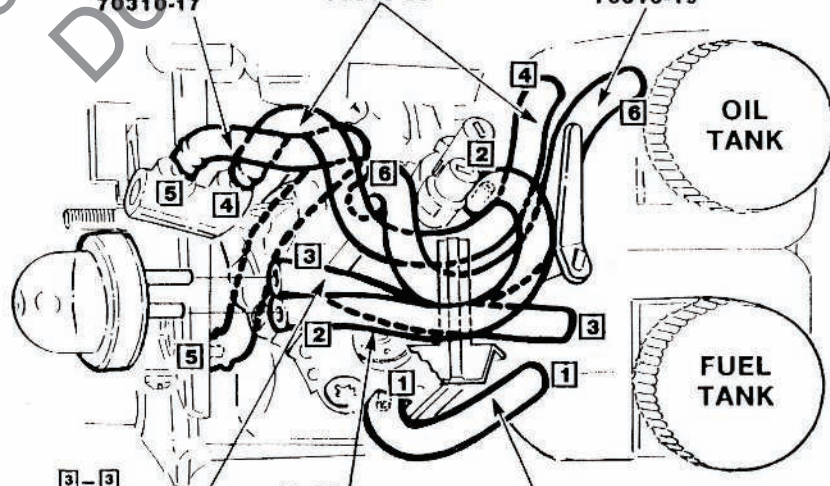
FIGURE 2  
 FIGURE 2  
 ABBILDUNG 2  
 FIGURA 2  
 FIGURA 2



5-5  
 OUTLET OIL PUMP  
 FITTING TO GUIDE  
 BAR PAD FITTING.  
 4 3/16" LONG.  
 70310-17

4-4  
 INLET OIL PUMP LINE  
 FROM OIL PICK UP  
 TO INSIDE PUMP  
 FITTING. 9" OVERALL  
 LENGTH WITH 4 5/8"  
 OUT OF TANK.  
 70310-36

6-6  
 PRESSURE PULSE LINE  
 FROM CARBURETOR  
 "PLASTIC" FITTING TO  
 DUCK BILL IN OIL TANK  
 4 3/4" LONG.  
 70310-19



3-3  
 PRIMER RETURN  
 LINE FROM LONG  
 PRIMER FITTING TO  
 UPPER FUEL TANK HOLE.  
 7 1/2" LONG OVERALL.  
 3 1/4" OUT OF TANK.  
 70310-30

2-2  
 PRIMER INLET LINE  
 FROM CARBURETOR FITTING  
 UNDER ADJUSTING SCREWS  
 TO SHORT PRIMER FITTING.  
 3" LONG.  
 01439-12

1-1  
 FUEL INLET LINE  
 FROM PICK UP TO  
 FITTING ON BOTTOM  
 OF CARBURETOR.  
 5 1/2" LONG OVERALL  
 AND 1 3/4" OUT OF TANK.  
 70310-22

**FUEL LINE CONNECTION**

- 1-1 FUEL INLET
- 2-2 PRIMER INLET
- 3-3 PRIMER RETURN

**OIL LINE CONNECTION**

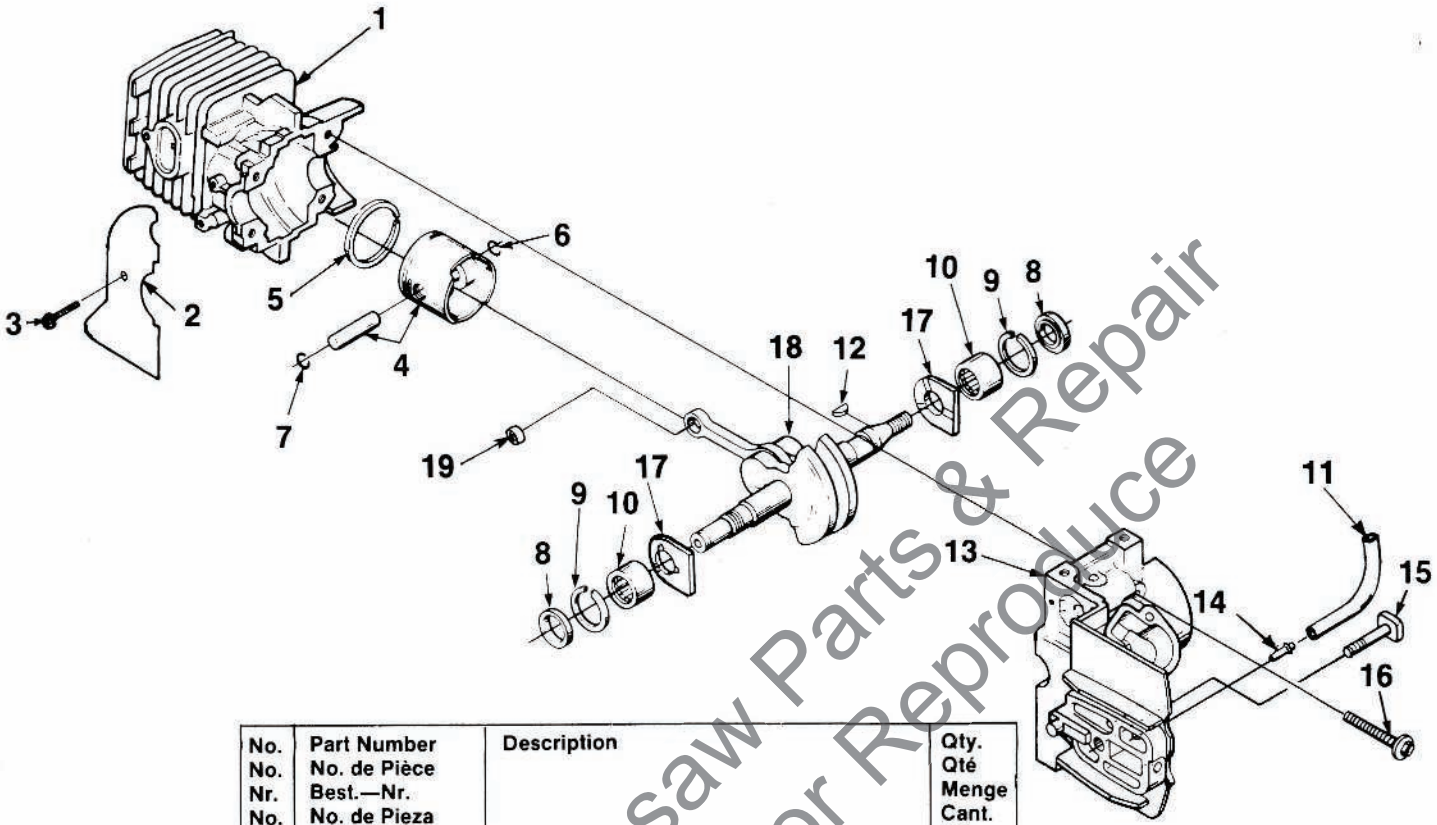
- 4-4 OIL PUMP INLET
- 5-5 OIL PUMP OUTLET
- 6-6 OIL TANK PRESSURE

ROUTE LINES AS  
 SHOWN - DO NOT KINK.

No. No. Nr. No. Nº	Part Number No. de Pièce Best.—Nr. No. de Pieza Pezzo N°	Description	Qty. Qté Menge Cant. Qta
1	A-02459	MUFFLER	1
2	02458	SCREEN- Spark arrestor	1
3	02500	FILTER- Air	1
4	82578	SCREW- Shoulder plastite (#10-24 x 1 3/4")	2
5	02491-A	BOX- Air filter	1
6	A-02486-A	CARBURETOR & OIL PUMP ASSY.	1
7	82549-1	SCREW- Torx taptite, tho forming (10-24 x 1")	2
8	02488	GASKET- Carburetor	1
9	● A-02499	HEAT DAM	1
10	95983	REED	1
11	03205	STOP- Reed	1
12	└ 82498	SCREW- Hex Taptite (4-40 x 3/8")	2
13	02453	GASKET- Intake manifold	1
14	● A-95007	ROTOR & STARTER PAWL	1
15	└ A-70285-E	KIT- Starter pawl	1
16	81229	NUT- (5/16-24)	2
17	84065	WASHER- (5/16")	1
18	● 94711-CS	MODULE	1
19	69326	LEAD- Hi-Tension	1
20	└ A-33055	TERMINAL	1
21	96169-S	SPARK PLUG (Champion DJ7Y)	1
	79252	SPARK PLUG (Champion RDJ7Y) (International Only)	1
22	98066	SPRING- Clutch	3
23	79221	SPIDER- Clutch	1
24	79222-A	SHOE- Clutch	3
25	● A-95653-C	SPROCKET & DRUM	1
26	└ 70277	BEARING	1
27	69254-2	PIN- Adjusting	1
28	● A-00440	SCREW & E-RING KIT	1
29	└ 93574	E-RING	1
30	82540	SCREW- Machine hex sems	2
31	93460	SCREW- Machine hex sems (10-24 x 1 7/8")	1
32	95299	WASHER- Thrust	2

- Assemblies
- Ensemble
- Bausätze
- Complessi
- Conjunto

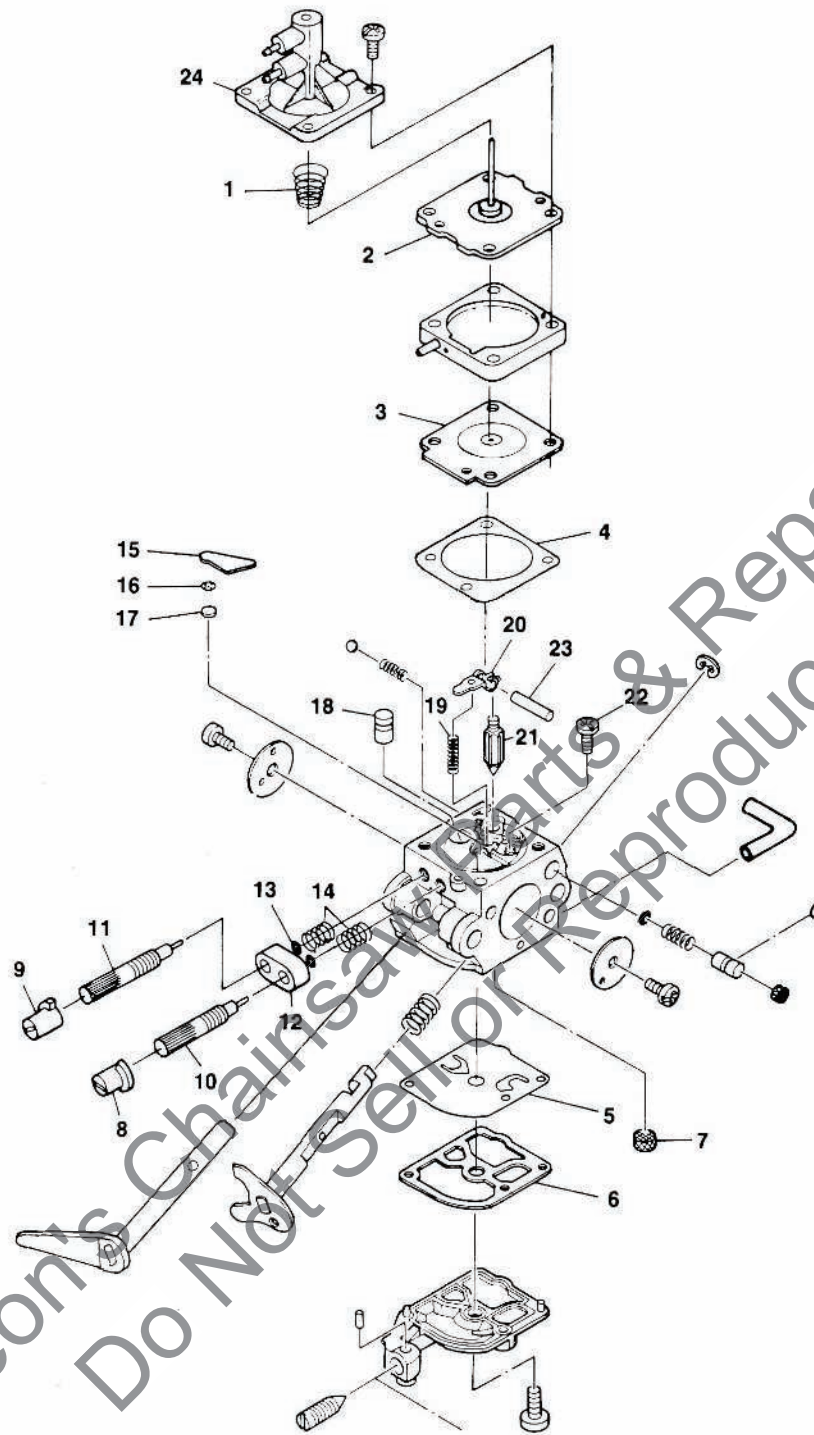
FIGURE 3  
 FIGURE 3  
 ABBILDUNG 3  
 FIGURA 3  
 FIGURA 3



No. No. Nr. No. N°	Part Number No. de Pièce Best.—Nr. No. de Pieza Pezzo N°	Description	Qty. Qté Menge Cant. Qta
1	02485-2 04328	CYLINDER (Super 2 Only) CYLINDER (XL Only)	1 1
2	02639	SHIELD- Sawdust	1
3	93932	SCREW- Tapping (#6-32 x 5/16")	1
4	● A-98967-A	PISTON & PIN ASSY. (Super 2 Only)	1
5	93165	RING- Piston	1
6	65261	RING- Retaining	1
7	98096	RING- Retaining	1
	● A-04330	PISTON & PIN ASSY. (XL Only)	1
	04329	RING- Piston (See #5)	1
	65261	RING- Retaining (See #6)	1
	98096	RING- Retaining (See #7)	1
8	94638	SEAL	2
9	69407	SPACER	2
10	12530	BEARING- Needle	2
11	70310-17	TUBING- Rubber (Oil Line)	2
12	69250	KEY	1
13	● A-03060-A	CRANKCASE ASSY.	1
14	94619	FITTING	1
15	69195	BOLT- Guide bar thd. forming	1
16	82567	SCREW- Torx pan hd. (10-24 x 1 1/8")	4
17	03962	WASHER- Thrust	2
18	● A-97611-B	CRANKSHAFT ASSY.	1
19	02035	BEARING	1
	81229	NUT- Lock (Not Shown)	1

- Assemblies
- Ensemble
- Bausätze
- Complessi
- Conjunto

**Carburetor  
Carburateur  
Vergaser  
Carburador  
Carburatore**



**Repair Kit- A-03905 (1-23)**  
 Jeu de réparation  
 Reparatur- Satz  
 Juego de reparación  
 Kit de Riparazione

**Oil Pump Plunger Kit- 02773 (1-2)**  
 Jeu de piston de pompe à huile  
 Ölpumpenkolben- Bausatz  
 Conjunto del émbolo de la bomba de aceite  
 Kit pistone de la pompa dell'olio

**Gasket/Diaphragm Kit- A-03904 (3-6)**  
 Jeu joint/diaphragme  
 Dichtung/Membrane- Satz  
 Conjunto diafragma/junta  
 Kit diaframma/guarnizione

**Oil Pump Body- 02770 (24)**  
 Corps de pompe à huile  
 Ölpumpengehäuse  
 Cuerpo de la bomba de aceite  
 Corpo de la pompa dell'olio

**ACCESSORIES  
ACCESSOIRES  
ZUBEHÖR  
ACCESSORIES  
ACCESORIOS**

- ▶ **KIT- Repair (sprocket nose bar)**..... A-70239-E  
Jeu de réparation (Lame à nez à pignon)  
Reparatursatz (Kettenrad-Nasenspitze)  
Kit per riparazioni (denta punta lama)  
Juego de reparación (extremo barra rueda dentada)
- ▶ **FUEL LINE (10 ft. length)** ..... 70310-99  
Conduite de carburant (3 m de long)  
Kraftstoffleitung (3 m Länge)  
Condotto d'alimentazione (3 m di lunghezza)  
Línea de combustible (10 pies de largo)
- ▶ **OIL LINE- (10 ft length)**..... 70309-99  
Conduite d'huile (3 m de long)  
Ölleitung (3 m Länge)  
Condotto dell'olio (3 m di lunghezza)  
Línea de aceite (10 pies de largo)
- ▶ **SAFE•T•TIP® (Standard)**..... DA-70776-B  
SAFE•T•TIP® (Standard)  
SAFE•T•TIP® (Standard)  
SAFE•T•TIP® (Standard)  
SAFE•T•TIP® (Standard)
- ▶ **GREASE- Multi Purpose (Sprocket bearing-PT guide bar)**..... 18453  
Graisse universelle (Palier de pignon-PT - lame-guide)  
Mehrzweck-Schmiermittel (Kettenradlager-PT-Führungsschiene)  
Grasso, multiuso Cuscinetto della ruota dentata - PT - barra di guida)  
Grasa de uso general (Cojinete de la rueda dentada - PT - barra guía)
- ▶ **CARRYING CASE**..... 94216-A  
Boítier de transport  
Tragekasten  
Custodia  
Maletín
- ▶ **STARTING ROPE (250 ft. Reel)**..... 98052-A  
Cordon de lanceur (75 m bobine)  
Starterseil (76 m Spule)  
Corda d'avviamento (bobina da 76 m)  
Cuerda de arranque (carrete de 76 m)

**TOOLS  
OUTILS  
WERKZEUGE  
ATTREZZI  
HERRAMIENTAS**

- ▶ **WRENCH (combination)**..... D-24814-A  
Clé combiné  
Schraubenschlüssel Kombination  
Chiave combinata  
Llave combinada
- ▶ **SILASTIC (crankcase sealing)**..... 24823  
Silastic (étanchéité du carter)  
Silastic (Kurbelgehäuse Dichtung)  
Silastic (sigillo di tenuta del carter)  
Silastic (sello del cárter)
- ▶ **PULLER- Magneto Rotor**..... A-24747-A  
Extracteur, rotor magnéto  
Abziehwerkzeug-Magnetrotor  
Rotore d'estrazione a magnete  
Extractor-rotor de magneto
- ▶ **IGNITION TEST SPARK PLUG**..... JA-31316-4  
Testeur d'allumage  
Testzündkerze für Zündprüfung  
Candela di collaudo  
Bujía para probar el encendido
- ▶ **SHIM (0.015" AIR GAP)**..... 22486  
Cale (écart de 0,38 mm)  
Distanzscheibe (0,38 mm Luftspalt)  
Spessore (spinterometro 0,38 mm)  
Suplemento (espacio de 0,38 mm)
- ▶ **T-25 TORX DRIVE BIT**..... 24982-01  
Foret torx T-25  
T-25 Torx-Antriebsbit  
Punta Torx Drive T-25  
Broca de empuje T-25 Torx
- ▶ **T-27 TORX DRIVE BIT**..... 18566-01  
Foret torx T-27  
T-27 Torx-Antriebsbit  
Punta Torx Drive T-27  
Broca de empuje T-27 Torx



NOTES  
NOTES  
NOTIZEN  
NOTAS  
NOTE

Leon's Chainsaw Parts & Repair  
Do Not Sell or Reproduce

NOTES  
NOTES  
NOTIZEN  
NOTAS  
NOTE

Leon's Chainsaw Parts & Repair  
Do Not Sell or Reproduce

NOTES  
NOTES  
NOTIZEN  
NOTAS  
NOTE

Leon's Chainsaw Parts & Repair  
Do Not Sell or Reproduce

**SYMBOL DEFINITIONS  
DEFINITIONS DES SYMBOLES  
ERKLÄRUNG DER WARNSYMBOL  
DEFINIZIONI DEI SIMBOLI  
SIGNIFICADO DE LOS SIMBOLOS**



**DANGER!  
DANGER!  
GEFAHR!  
¡PELIGRO!  
PERICOLO!**



**READ YOUR PRODUCT LITERATURE.  
LIRE LES PUBLICATIONS SUR LE PRODUIT.  
DIE MASCHINEN-BESCHREIBUNGEN UND ANLEITUNGEN LESEN.  
LEER EL MANUAL DEL PRODUCTO.  
LEGGERE LA DOCUMENTAZIONE DEL PRODOTTO.**

**WEAR HEARING AND EYE PROTECTION DEVICES.  
PORTER DES PROTEGE-OREILLES ET UNE PROTECTION DES YEUX.  
OHREN-UND AUGENSCHUTZ TRAGEN.  
USAR EQUIPO DE PROTECCIÓN DE OÍDOS Y OJOS.  
INDOSSARE AURICOLARI ED OCCHIALI PROTETTIVI.**

**CUSTOMER ASSISTANCE**

**FOR THE LOCATION OF YOUR NEAREST HOMELITE SERVICING DEALER IN THE UNITED STATES, PUERTO RICO, AND THE VIRGIN ISLANDS.**

**CALL: 1-800-242-4672**

**NOTE: DEALER INFORMATION, TECHNICAL ADVICE AND PRODUCT INFORMATION CAN BE OBTAINED AT THIS NUMBER.**

**HEADQUARTERS**

**HOMELITE DIVISION OF TEXTRON INC.  
P.O. BOX 7047  
CHARLOTTE, N.C. 28241**

**OVERSEAS OFFICES**

**NETHERLANDS**

**HOMELITE TEXTRON  
DIVISION OF TEXTRON ATLANTIC  
(HDQS. — Europe, Africa and Middle East)  
Haverstraat 24  
2153 GB Nieuw Vennep  
The Netherlands**

**FRANCE**

**HOMELITE TEXTRON  
UNE DIVISION DE TEXTRON  
S.A.R.L.  
Z.I. du Vert-Galant  
Rue du Chateau/Rue de la Garenne  
95310 Saint-Quen-L'Aumone  
France**

**AUSTRALIA**

**HOMELITE DIVISION OF TEXTRON PACIFIC LIMITED  
HEADQUARTERS  
22 Terra - Cotta Drive  
Blackburn, 3130  
Victoria, Australia**

**CANADIAN OFFICES**

**HOMELITE**

**DIVISION OF TEXTRON CANADA LIMITED  
1850 55th Avenue  
Lachine, Quebec, Canada  
H8T 3J5**

**212-214 590 Ebury Place  
New Westminster, B.C.  
V3M 6K7**

**595 Canarctic Drive  
Toronto, Ontario  
M3J 2P9**

**HOMELITE TEXTRON**

Homelite Division of Textron Inc.

0193