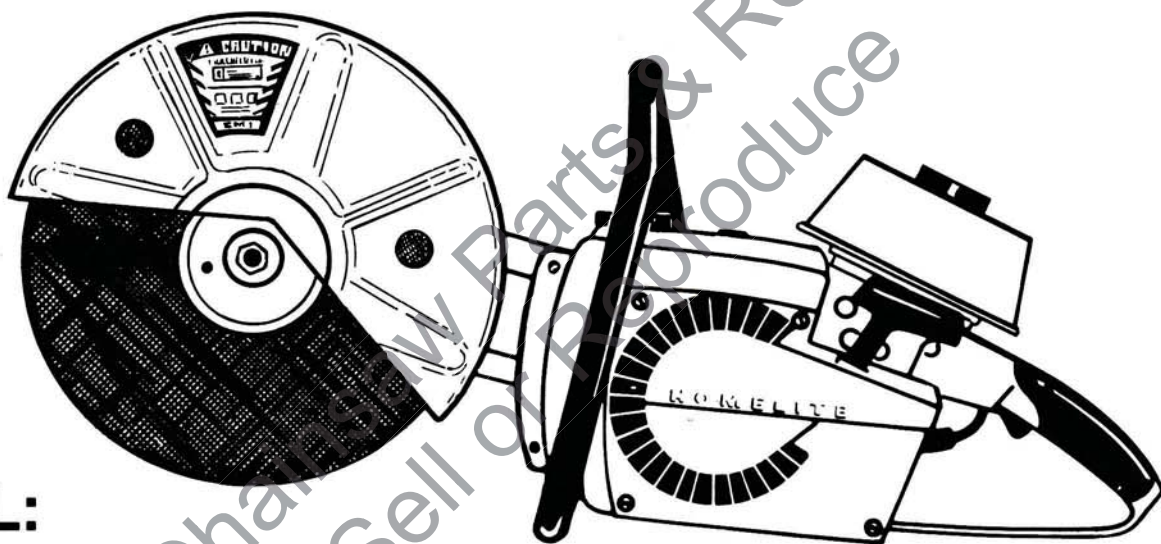


HOMELITE®

Rev. 1
PART NO. 17927
Printed in U.S.A.
Price .35

PARTS LIST



MODEL:

XL-98C

MULTI-PURPOSE SAW

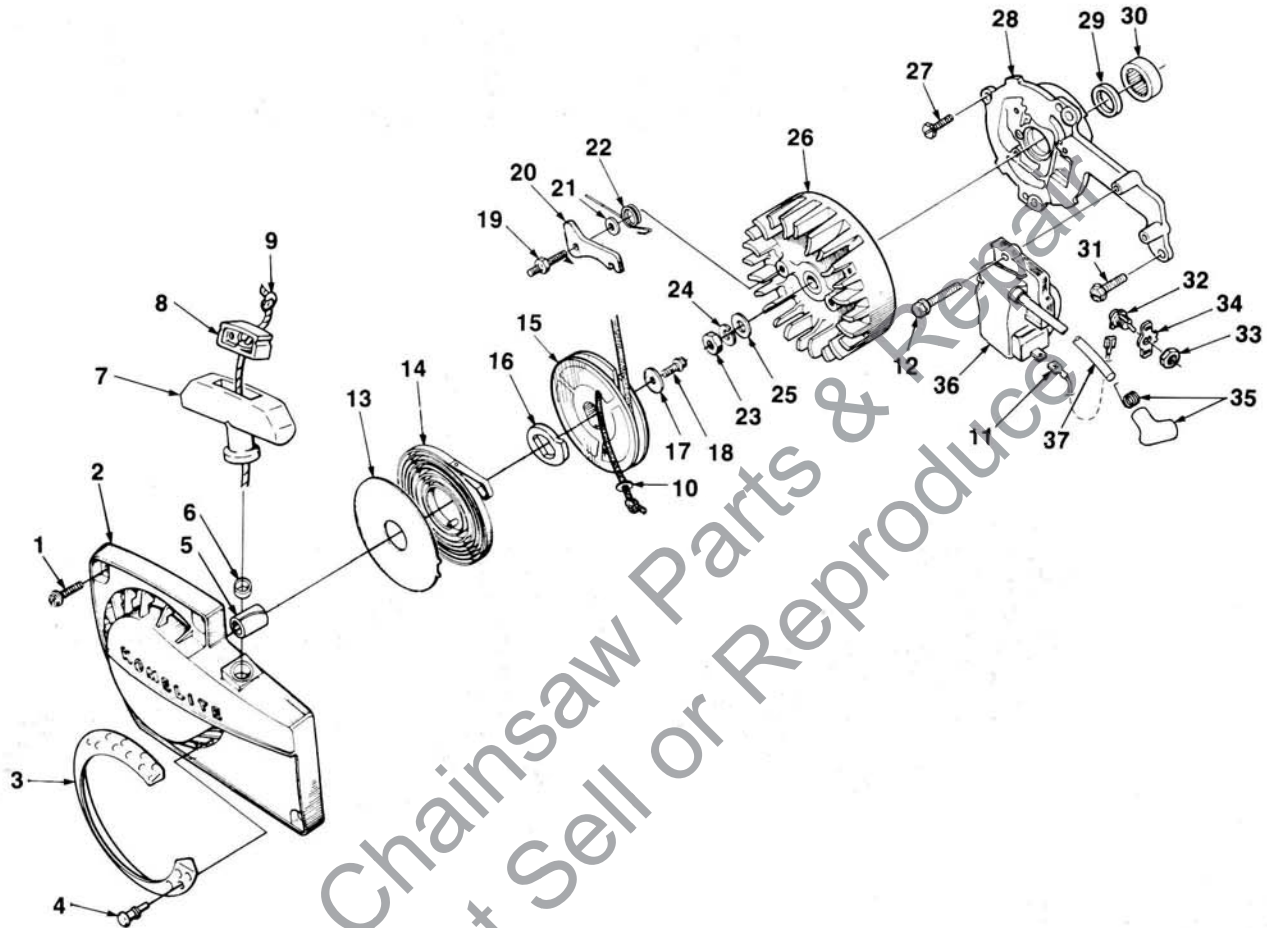
12" — (UT-05015-B)
14" — (UT-05037)

HOMELITE **TEXTRON**

Homelite Division of Textron Inc.

XL-98C

FIGURE 1

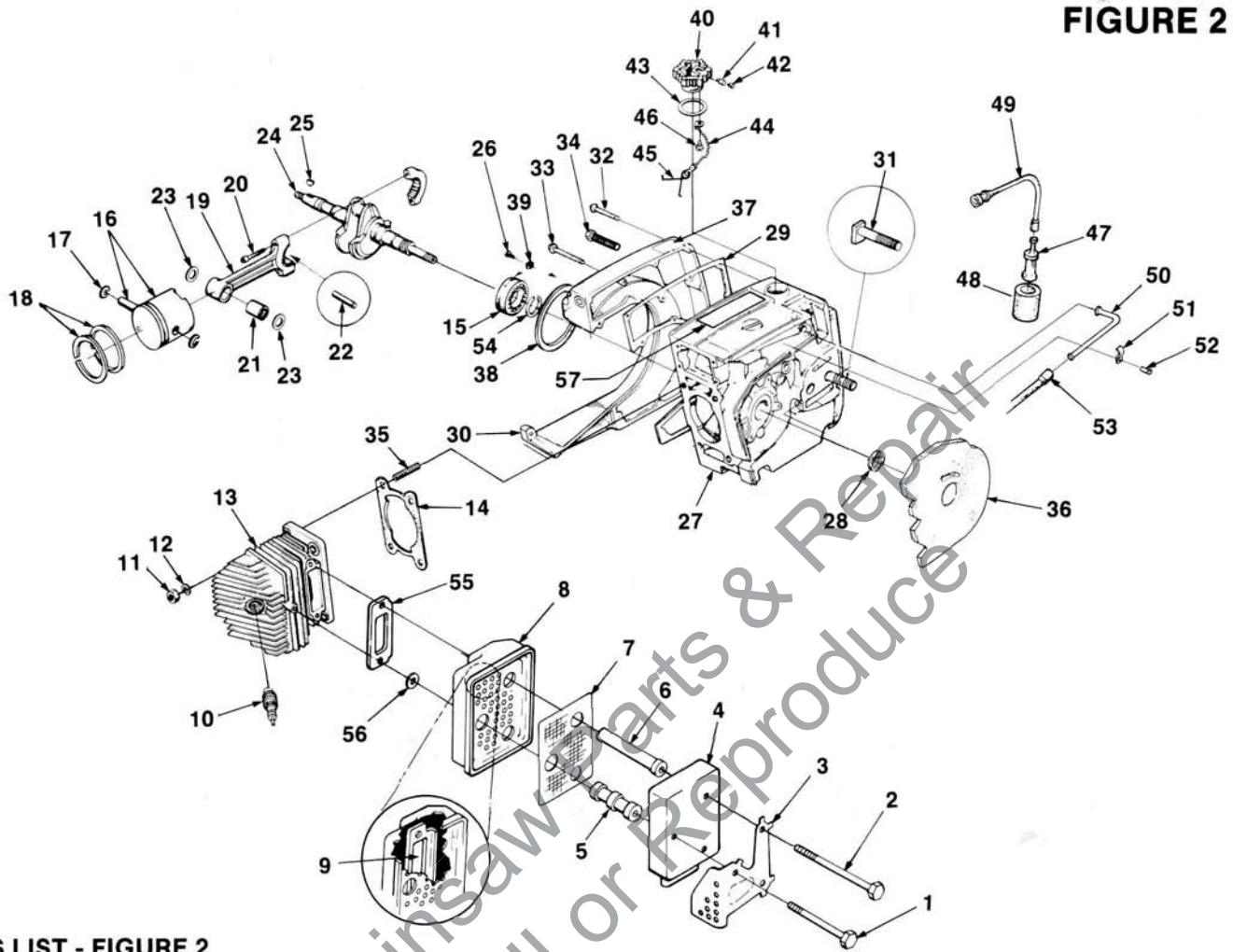


PARTS LIST - FIGURE 1

NO.	DESCRIPTION	PART NO.	QTY.	NO.	DESCRIPTION	PART NO.	QTY.
1	SCREW- Hex hd. 12-24 x 5/8	80676	4	19	STUD- Starter pawl	58757-E	2
2	HOUSING- Starter	A-64504-C	1	20	STARTER PAWL	58756-3	2
	Includes:			21	WASHER- Flat	84115	2
3	KIT- Fan housing screen	A-64421	1	22	SPRING- Starter pawl	65375-2	2
	Includes:			23	NUT- Hex 3/8-24	81124-A	1
4	STUD- Drive #2 x 1/4	67191	4	24	WASHER- Lock 3/8	83102	1
5	BUSHING	64443	1	25	WASHER- Flat 3/8	84010	1
6	BUSHING	67177	1	26	ROTOR- Magneto	96801-A	1
7	GRIP- Starter	A-69962-B	1	27	SCREW- Hex 1/4-20 x 5/8	80048	3
	Includes:			28	PLATE- Back	A-96799-A	1
8	INSERT	70018-A	1		Includes:		
9	ROPE- Starter (48", #5)	A-93875	1	29	SEAL	12282-A	1
	Includes:			30	BEARING- Roller	63195	1
10	WASHER	93862	1	31	SCREW- Sems hex hd. 1/4-20 x 3/4	80218-1	1
11	LEAD- Ground	A-94850	1	32	SWITCH	A-57650-3A	1
12	SCREW- Sems hex hd. 8-32 x 1	88044	2		Includes:		
13	SHIELD	63566	1	33	NUT	72084-A1	1
14	SPRING	63268-A	1	34	PLATE- Indicating	12793-A	1
15	PULLEY & CUP	A-64446	1	35	TERMINAL- Spark plug	A-33055	1
	Includes:			36	MODULE- Ignition	A-96798-A	1
16	LOCK- Spring	94827	1		Includes:		
17	WASHER	58763	1	37	LEAD- High tension	96743	1
18	SCREW- Hex hd. 10-32 x 1/2	80648	1				

XL-98C

FIGURE 2



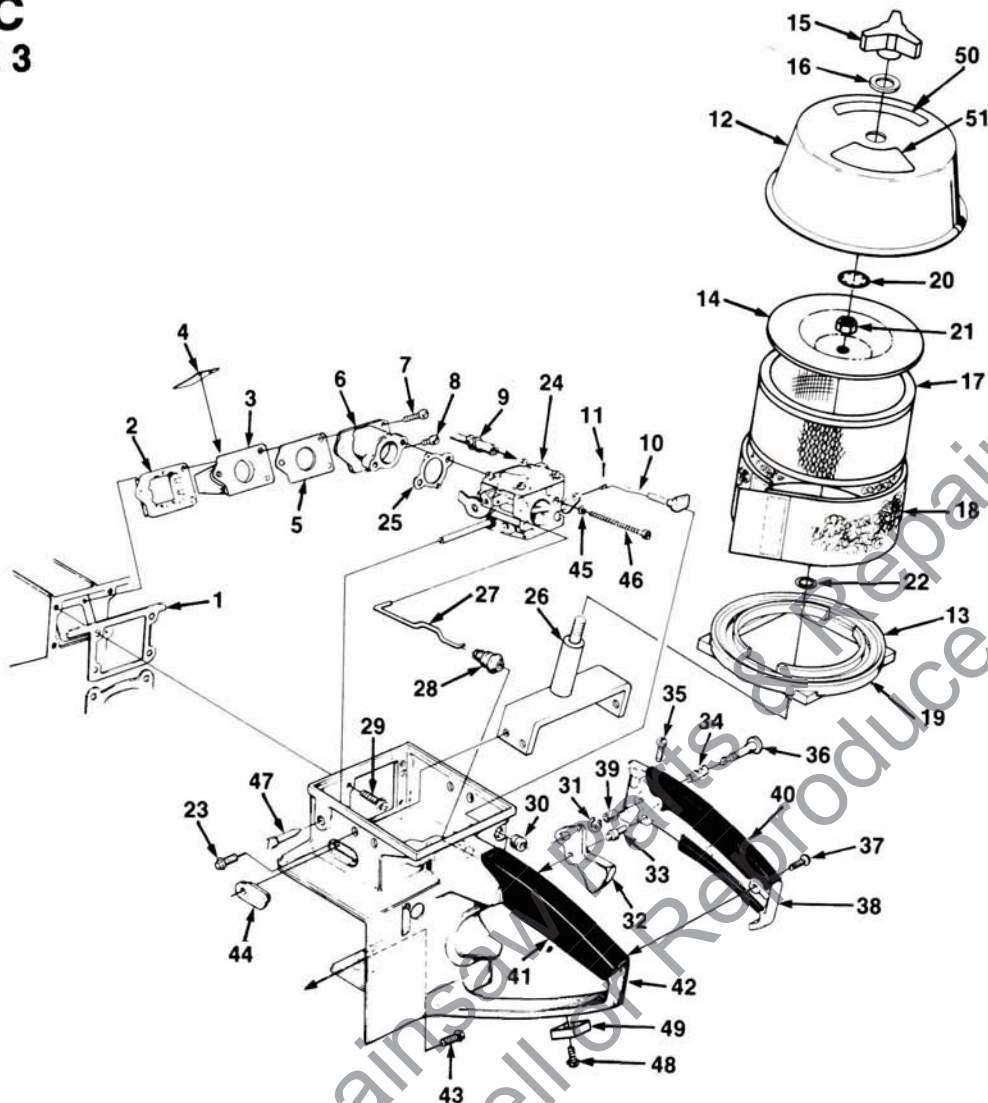
PARTS LIST - FIGURE 2

NO.	DESCRIPTION	PART NO.	QTY.	NO.	DESCRIPTION	PART NO.	QTY.
	MUFFLER KIT (Complete)	A-69864-C	1	27	CRANKCASE	A-49557	1
	Includes:				Includes:		
1	SCREW	95885	1	28	SEAL	12282-A	1
2	SCREW- Hex hd. 1/4-20 x 3	82280	2	29	GASKET- Oil cover	65391	1
3	SHIELD- Muffler	69842	1	30	COVER- Fuel tank	67153-2	1
4	CAP- Muffler	A-69836-1	1	31	BOLT- Guide	67807	2
5	SUPPORT- Short	69844	1	32	SCREW- Fil hd. 8-32 x 5/8	82358	6
6	SUPPORT- Long	69843	1	33	SCREW- Fil hd. 8-32 x 1 3/4	82147	1
7	SCREEN- Spark arrestor	A-93900-A	1	34	SCREW- Fil hd. 8-32 x 2 3/16	95725	8
8	BODY- Muffler	A-69838-1	1	35	STUD- Cylinder	55871	4
9	PLATE- Muffler	69839	1	36	SHIELD- Sawdust	A-64715	1
10	SPARK PLUG	93561-S	1	37	LABEL- Warning	69847	1
	SPARK PLUG (Opt.) (Colder plug)	69027-S	1	38	"O" RING	67559	1
11	NUT 1/4-28 x 3/8	96212	4	39	WASHER- Lock	59705	2
12	WASHER- Lock 1/4	83009	4	40	CAP- Fuel	A-69500-A	1
13	CYLINDER	A-42206-B	1		Includes:		
	Includes:			41	VALVE- Check	69451	1
14	GASKET- Cylinder	63778-1	1	42	FILTER	69454	1
15	BEARING- Ball	58190	1	43	GASKET- Fuel cap	69501	1
16	PISTON & PIN ASSEMBLY	A-49314	1	44	CHAIN	69502	1
	Includes:			45	RETAINER- Cap	96535	1
17	PISTON PIN RETAINING RING	64742	2	46	SCREW	82256-A	1
18	PISTON RING	55537	1	47	FILTER- Fuel	A-97700	1
19	ROD- Connecting	A-69658-A	1		Includes:		
	Includes:			48	FILTER ELEMENT	59253-1A	1
20	SCREW- Hex hd. 8-32 x 1/2	69919	2	49	FUEL LINE	65593-A	1
21	BEARING- Needle	69638-A	1	50	CONNECTOR	67080	1
22	BEARING- Needle (set of 28)	A-69056	1	51	CLAMP	65597-1	1
23	WASHER	68010	2	52	SCREW- Pan hd 6-32 x 5/16	80605	1
24	CRANKSHAFT	67168-4	1	53	FUEL LINE	65718-B	1
25	KEY- Woodruff	75078	1	54	RING- Retaining	58319-A	1
26	SCREW- Torx 10-32	70306	2	55	GASKET- Muffler	78098	1
				56	WASHER- Flat 1/4	84020	1
				57	DECAL	46788	1

ALWAYS FURNISH MODEL AND SERIAL NUMBER WHEN ORDERING PARTS.

XL-98C

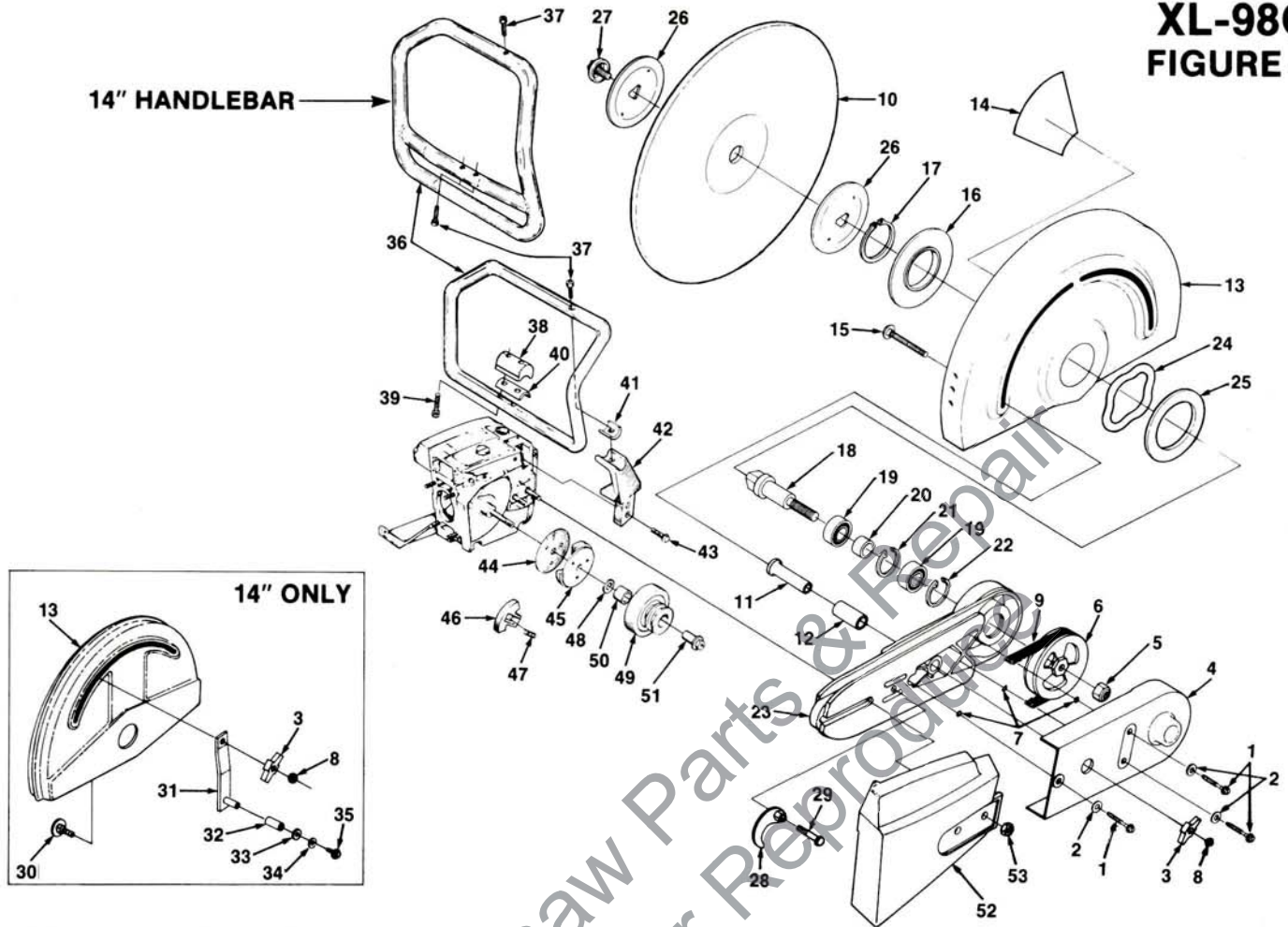
FIGURE 3



PARTS LIST - FIGURE 3

NO.	DESCRIPTION	PART NO.	QTY.	NO.	DESCRIPTION	PART NO.	QTY.
1	GASKET	63779-C	1	26	BRACKET- Cover	A-49215	1
2	RETAINER- Reed	63370-A	1	27	ROD- Throttle	63266-A	1
3	SEAT- Reed valve	63371-B	1	28	BOOT- Throttle rod	58348	1
4	REED- Valve	63166-A	4	29	SCREW- Hex hd. 12-24 x 5/8	80676	4
5	GASKET	65483	1	30	GROMMET	64862	1
6	SPACER- Carburetor	A-67460-1	1	31	RING	58409	1
7	SCREW- Pan hd. 8-32 x 1 1/4	82174	2	32	TRIGGER	65745	1
8	SCREW- Pan hd. (8-32 x 1")	82173	1	33	PIN	65719	1
9	FUEL LINE	65718-B	1	34	SPRING	58405	1
10	CHOKE ROD	67201-1	1	35	SCREW- 8-32 x 5/8	80023-2	1
11	COTTER PIN	86324	1	36	PIN- Throttle	95671	1
	AIR FILTER KIT	A-49556	1	37	SCREW- Pan hd. 8-32 x 1/2	80560	2
	Includes:			38	COVER- Throttle handle	A-69045	1
12	AIR FILTER COVER	A-49142-1	1		Includes:		
	Includes:			39	BUSHING	59064	1
13	GASKET	50951	1	40	GRIP- Throttle handle	68768	1
14	COVER- Filter Element	49212	1	41	GRIP- Throttle handle	68767	1
15	KNOB- Cover	46076	1	42	HANDLE- Throttle (XL98C-12")	A-47515	1
16	WASHER	98698	1		HANDLE- Throttle (XL98C-14")	A-49690	1
17	FILTER ELEMENT- Air	54620-B	1	43	SCREW- Hex hd. 12-24 x 7/8	80891	1
18	PRE FILTER- Felt	49213	1	44	GROMMET	51144	1
19	RING & GASKET ASSEMBLY	A-50952-A	1	45	WASHER- Lock #10	83046	2
	Includes:			46	SCREW- 10-32 x 1 7/8	82179	2
	GASKET (#13)	50951	1	47	SCREW- Idle adjustment	63369	1
20	RING- Retaining	46072	1	48	SCREW- 10-24 x 1/2	88049	1
21	NUT- Hex 5/16-18	81162	1	49	PAD- Wear	49686	1
22	WASHER- Seal	49435	1	50	DECAL- Instruction	49263	1
23	SCREW- Pan hd. 8-32 x 1/4	80575	4	51	DECAL- Warning	49687	1
24	CARBURETOR	A-42208-B	1				
	Includes:						
25	GASKET	67540	1				

XL-98C FIGURE 4



PARTS LIST - FIGURE 4

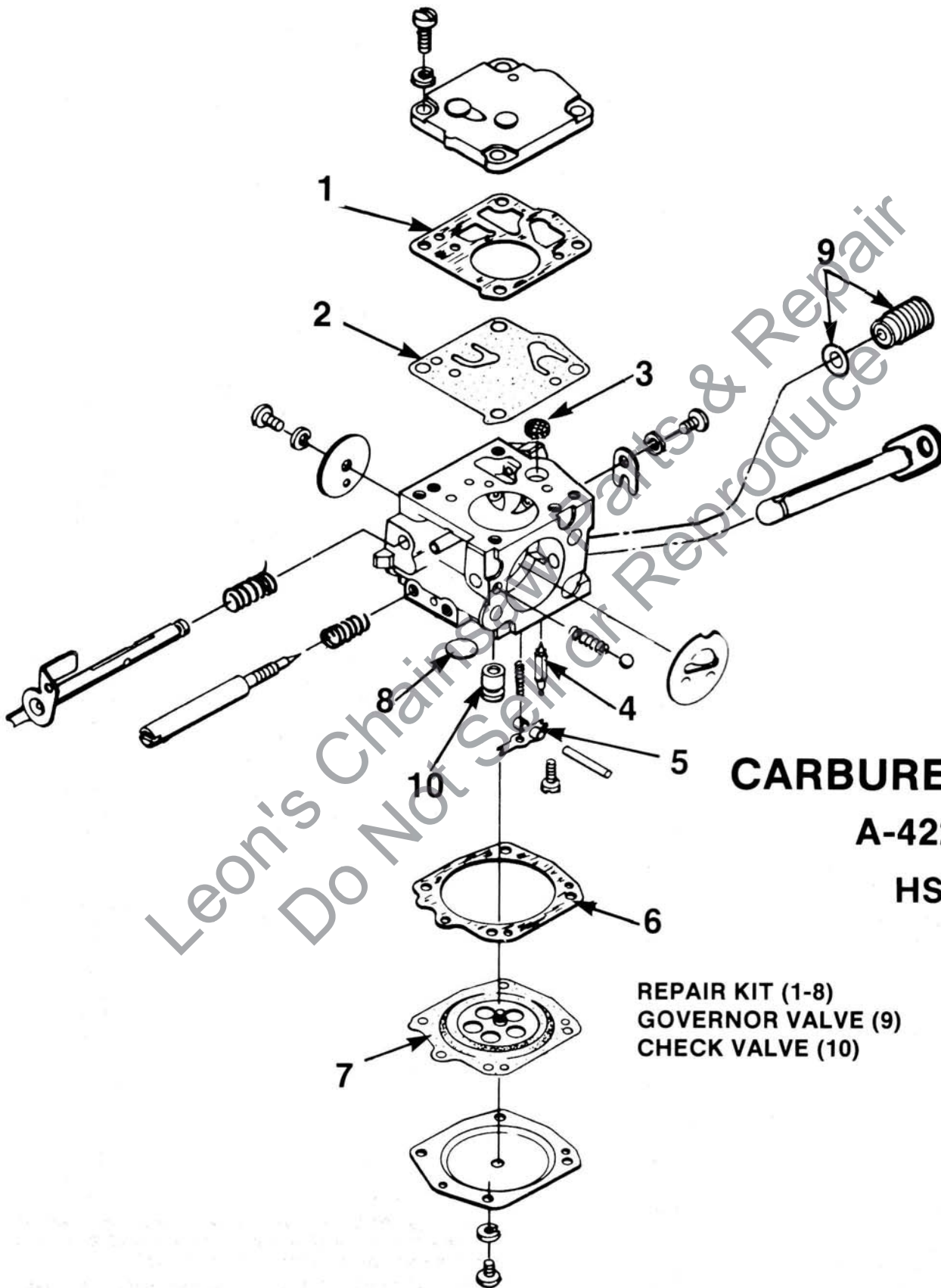
NO.	DESCRIPTION	PART NO.	QTY.	NO.	DESCRIPTION	PART NO.	QTY.
1	SCREW- Slotted (1/4-20 x 1 1/2)	94143	3	31	ARM- Adjusting (Note 2) (XL98C-14")	A-49789	1
2	WASHER- Flat 1/4	84026	3	32	TUBING- Rubber (XL98C-14")	49553	1
3	KNOB- Handle (Note 2)	JA-33955-0	1	33	WASHER- Flat 5/16 (XL98C-14")	84027	1
4	COVER- Arm	43966-B	1	34	WASHER- Lock 1/4 (XL98C-14")	83009	1
5	NUT- Lock hex 1/2-13	81245	1	35	SCREW- Hex cap 1/4-20 x 5/8 (XL98C-14")	80048	1
6	PULLEY- Driven	43998-1A	1	36	HANDLE BAR (XL98C-12")	A-53573-4A	1
7	"O" RING	46462	3		HANDLE BAR (XL98C-14")	A-49680-1	1
8	NUT- Hex 5/16-18 (Note 2)	JA-44310-6	1	37	SCREW- Nylock 1/4-20 x 1" (XL98C-12")	80428-1	1
9	BELT- "V" Drive	46068	1		SCREW- Nylock 1/4-20 x 1" (XL98C-14")	80428-1	3
10	WHEEL- Resinoid (XL98C-12")	64596-BS	1	38	SPACER	50724-2	1
	WHEEL- Resinoid (XL98C-14")	49559	1	39	SCREW- Nylock 1/4-20 x 1 7/8	82242	2
11	SPACER- Guard adjusting (XL98C-12") (Note 1)	46456-B	1	40	MOUNT- Shock (spacer)	51162	1
12	TUBING- Rubber (XL98C-12")	46455	1	41	MOUNT- Shock (bracket)	51163	1
13	GUARD- Wheel (XL98C-12")	A-43462-1A	1	42	BRACKET- Handle Bar	69829-2	1
	GUARD- Wheel (XL98C-14")	A-49580	1	43	SCREW- Hex hd. 12-24 x 3/4	80867	2
14	LABEL- Caution	48922	1	44	COVER- Clutch	93628	1
15	BOLT- Step 5/16-18 x 3 1/2 (XL98C-12") (Note 1)	82534	1	45	PLATE- Clutch back	65760-1B	1
16	WASHER- Mounting (XL98C-12")	46000	1	46	SHOE- Clutch	69461	3
	WASHER- Mounting (XL98C-14")	46000-1	1	47	SPRING- Clutch	67053	3
17	RING	46065	1	48	WASHER	58833	1
18	SHAFT- Wheel	46079-A	1	49	PULLEY- Bearing & Arm	A-49224	1
19	BEARING- Ball	63107-S	2		Includes:		
20	SPACER- Bearing	46067	1	50	BEARING	51151	1
21	RING- Retaining	47207	1	51	RACE- Inner bearing	A-97901	1
22	RING- Retaining	31746	1	52	COVER- Drivecase	53579-5	1
23	ARM- Wheel	A-49558	1	53	NUT- 3/8-16	81089-2	2
	Includes:						
24	SPRING- Wave	47388	1				
25	SHIM	47387	1				
26	FLANGE- Wheel	43996-1A	1				
27	KIT- Screw, Washer & Retaining	A-48783-A	1				
28	CAM & ADJUSTER	A-49194	1				
29	SCREW- Hex hd. 5/16-18 x 1 1/2	80087	1				
30	BOLT- Step (XL98C-14") (Note 2)	82519-A	1				

NOTE 1: (XL98C-12") When replacing the Spacer 46456-A with new Spacer A-46456-B, units prior to S/N HJ0600376, must use new Step Bolt 82534 instead of 82371 Step Bolt.

NOTE 2: (XL98C-14") When replacing A-49554 Adjusting Arm with A-49789 Adjusting Arm, units prior to S/N HI0050085, must use Step Bolt 82519-A, Knob JA-33955-0 & Nut JA-44310-6.

ALWAYS FURNISH MODEL AND SERIAL NUMBER WHEN ORDERING PARTS.

XL-98C
FIGURE 5



CARBURETOR

A-42208-A

HS-135A

REPAIR KIT (1-8)
GOVERNOR VALVE (9)
CHECK VALVE (10)

95698
A-42209
A-51348

ACCESSORIES

WHEELS- Resinoid

METAL- (12" x 5/32" x 1")	64597-BS
DUTILE- (12" x 5/32" x 1")	68421-AS
CONCRETE- (12" x 5/32" x 1")	64596-BS
CONCRETE- (11 7/8" x 5/32" x 20 mm)	43233-AS
DUTILE- (11 7/8" x 5/32" x 20 mm)	43234-AS
METAL- 11 7/8" x 5/32" x 20 mm)	43235-AS
DUCTILE- (14" x 5/32 x 1")	49560
METAL- (14" x 5/32" x 1")	49561

WHEELS- Diamond

CONCRETE- (12" x 1/8" x 1")	A-49231-A
CONCRETE- (14" x 1/8" x 1")	A-49572

BLADE- Carbide	64595-A
SEALASTIC	24823
PAINT- Red	23475
DOLLY KIT	UT-05032-A
CARRY CASE- w/Insert	A-47390-B
WET CUTTING KIT	A-49649
BLOTTER	24174

TOOLS

SCREW DRIVER	24541
WRENCH- Combination	A-49607
WRENCH- Socket	68651
WRENCH- Adjusting	A-24085
WRENCH- Spanner	A-23934
SHIM- Air gap (black)	24306
BIT- Torx 1/4" shank	24982-01
BIT- Torx 5/16" shank	24982-02
PULLER- Rotor	A-24290
Includes:	
SCREW- Rotor Removal	24301
RING- Retaining	67912

HEADQUARTERS

HOMELITE DIVISION OF TEXTRON INC.

P.O. BOX 7047
14401 CAROWINDS BOULEVARD
CHARLOTTE, N.C. 28241

OVERSEAS OFFICES

HOMELITE TEXTRON

Une Division de Textron Atlantic S.A.R.L.
B.P. 7011
95050 Cergy-Pontoise Cedex
France

HOMELITE DIVISION OF TEXTRON INC.

Pacific Limited
P.O. BOX 209
Blackburn, 3130
Victoria, Australia

HOMELITE DIVISION OF TEXTRON INC.

Korenaarstraat 1
2153 BM Nieuw Venneep
The Netherlands

HOMELITE DIVISION OF TEXTRON LTD.

Unit 22, Hither Trading Estate
Clevedon, Avon, U.K. BS21 6XU

CANADIAN OFFICES

HOMELITE

DIVISION OF TEXTRON CANADA LIMITED

1850 55th Avenue
Lachine, Quebec, Canada
H8T 3J5

HOMELITE

DIVISION DE TEXTRON CANADA LIMITÉE

1850 55e av.
Lachine, Québec, Canada
H8T 3J5

3260 Viking Way
Richmond, British Columbia
V6V 1N6

16520, 111th Avenue
Edmonton, Alberta
T5M 3V8

37 Densley Avenue
Toronto, Ontario
M6M 2P5

45 Brandon Street
Moncton, New Brunswick
E1C 7E7

HOMELITE TEXTRON

Homelite Division of Textron Inc.