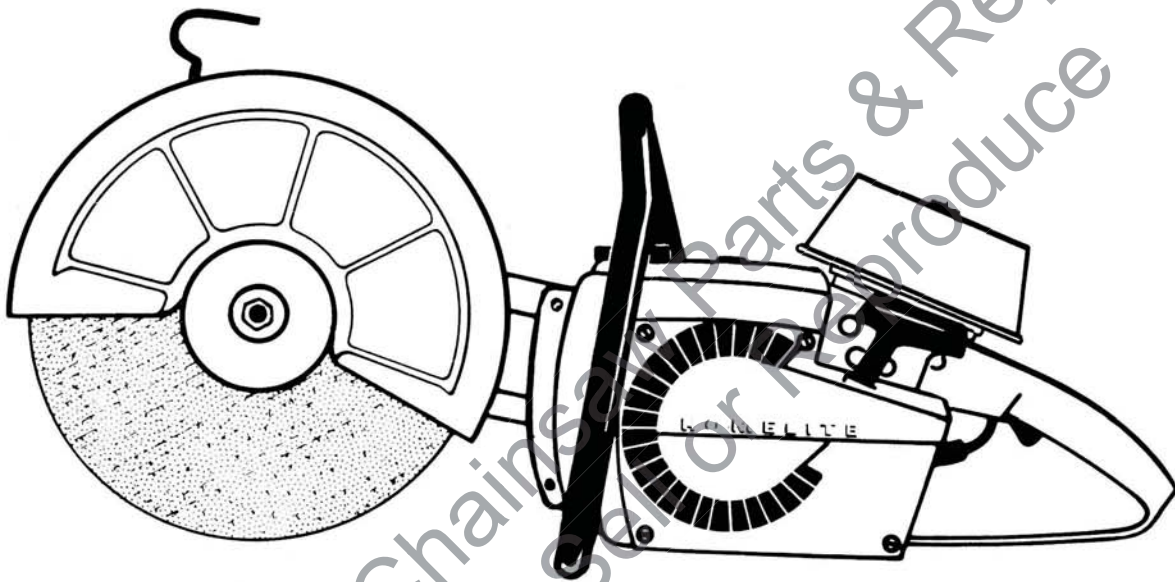


PART NO. 24760 REV. 3
Printed in U.S.A.

PARTS LIST



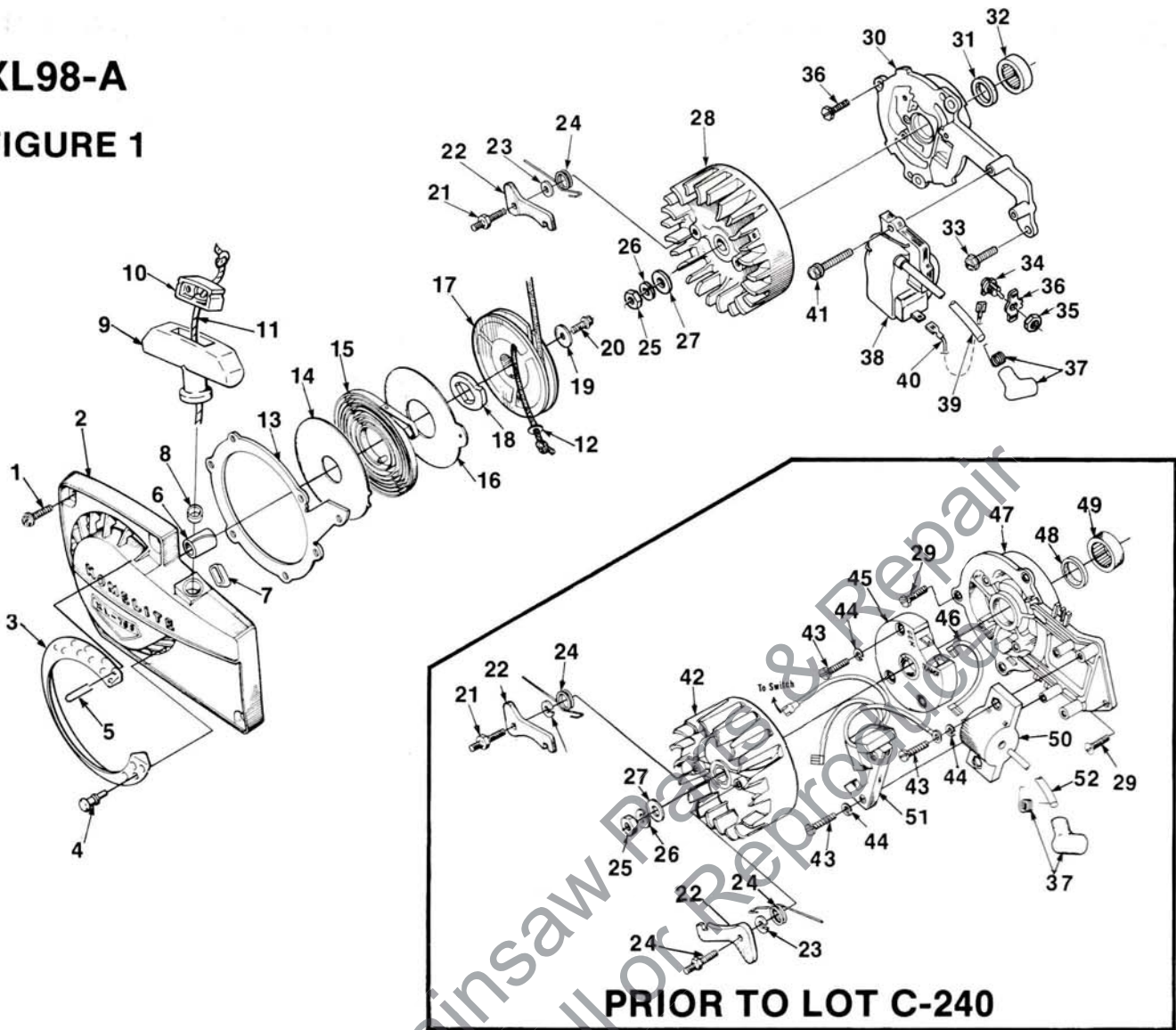
XL-98A **MULTIPURPOSE SAW**

HOMELITE **TEXTRON**

Homelite Division of Textron Inc.

XL98-A

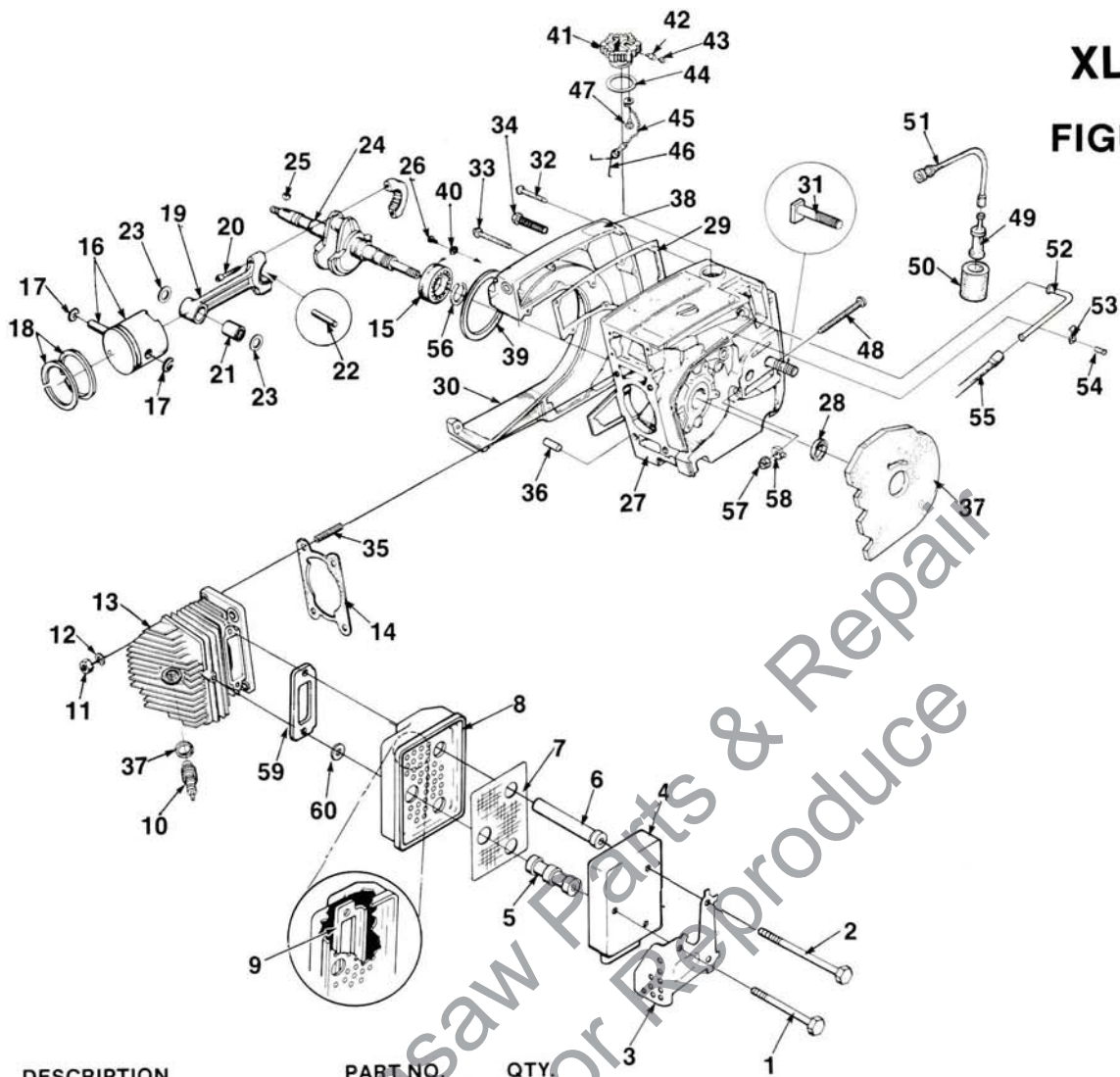
FIGURE 1



NO.	DESCRIPTION	PART NO.	QTY.	NO.	DESCRIPTION	PART NO.	QTY.
1	SCREW- Hex hd. 12-24 x 5/8	80676	8	29	SCREW- Hex 1/4-20 x 5/8	80048	3
2	HOUSING- Starter	A-64504-C	1	30	PLATE- Back (After Lot #C-240)	A-96799-A	1
3	KIT- Fan housing screen	A-64421	1		Includes:		
4	STUD- Drive	67191	4	31	SEAL	12282-A	1
5	FASTENER	64419	6	32	BEARING	63195	1
6	BUSHING	64443	1	33	SCREW- Sems hex hd. 1/4-20 x 3/4		
7	BUSHING	65830	1		(After Lot #C240)	80218-1	2
8	BUSHING	67177	1	34	SWITCH	A-57650-3A	1
9	GRIP- Starter	A-69962-B	1		Includes:		
10	INSERT	70018-A	1	35	NUT	72084-A1	1
11	ROPE- Starter (48", #5)	A-93875	1	36	PLATE- Indicating	12793-A	1
	Includes:			37	TERMINAL- Spark plug	A-33055	1
12	WASHER	93862	1	38	MODULE- Ignition (After Lot #C240)	A-96798-A	1
13	RING- Air flow (prior to Lot #7045)	67409	1		Includes:		
14	SHIELD	63566	1	39	LEAD- High tension	96743	1
15	SPRING	63268-A	1	40	LEAD- Ground (After Lot #C240)	A-94850	1
16	SHIELD	63565-A	1	41	SCREW- Sems hex hd. 8-32 x 1		
17	PULLEY & CUP	A-64446	1		(After Lot #C240)	88044	2
	Includes:			42	ROTOR- Magneto (Prior to Lot #C240)	67165	1
18	LOCK- Spring	94827	1	43	SCREW- Mach. hd. 8-32 x 3/4		
19	WASHER	58763	1		(Prior to Lot #C240)	82178	7
20	SCREW- Hex hd. 10-32 x 1/2	80648	1	44	WASHER- (Prior to Lot #C240)	83022	7
21	STUD- Starter pawl	58757-E	2	45	MODULE- (Prior to Lot #C240)	67162	1
22	STARTER PAWL	58756	2	46	LEAD- Transformer		
23	WASHER- Lock	70901	1		(Prior to Lot #C240)	67167	1
24	SPRING	65375-2	2	47	PLATE- Back (Prior to Lot #C240)	A-67618-A	1
25	NUT- Hex 3/8-24	81124	1		Includes:		
26	WASHER- Lock 3/8	83102	1	48	SEAL	12282-A	1
27	WASHER- Flat 3/8	84010	1	49	BEARING- Roller	63195	1
28	ROTOR- Magneto (After Lot #C-240)	96801	1	50	COIL- Transformer (Prior to Lot #C240)	67164-A	1
				51	COIL & CORE (Prior to Lot #C240)	67163	1
				52	LEAD- High tension		
					(Prior to Lot #C240)	67166	1

XL98-A

FIGURE 2

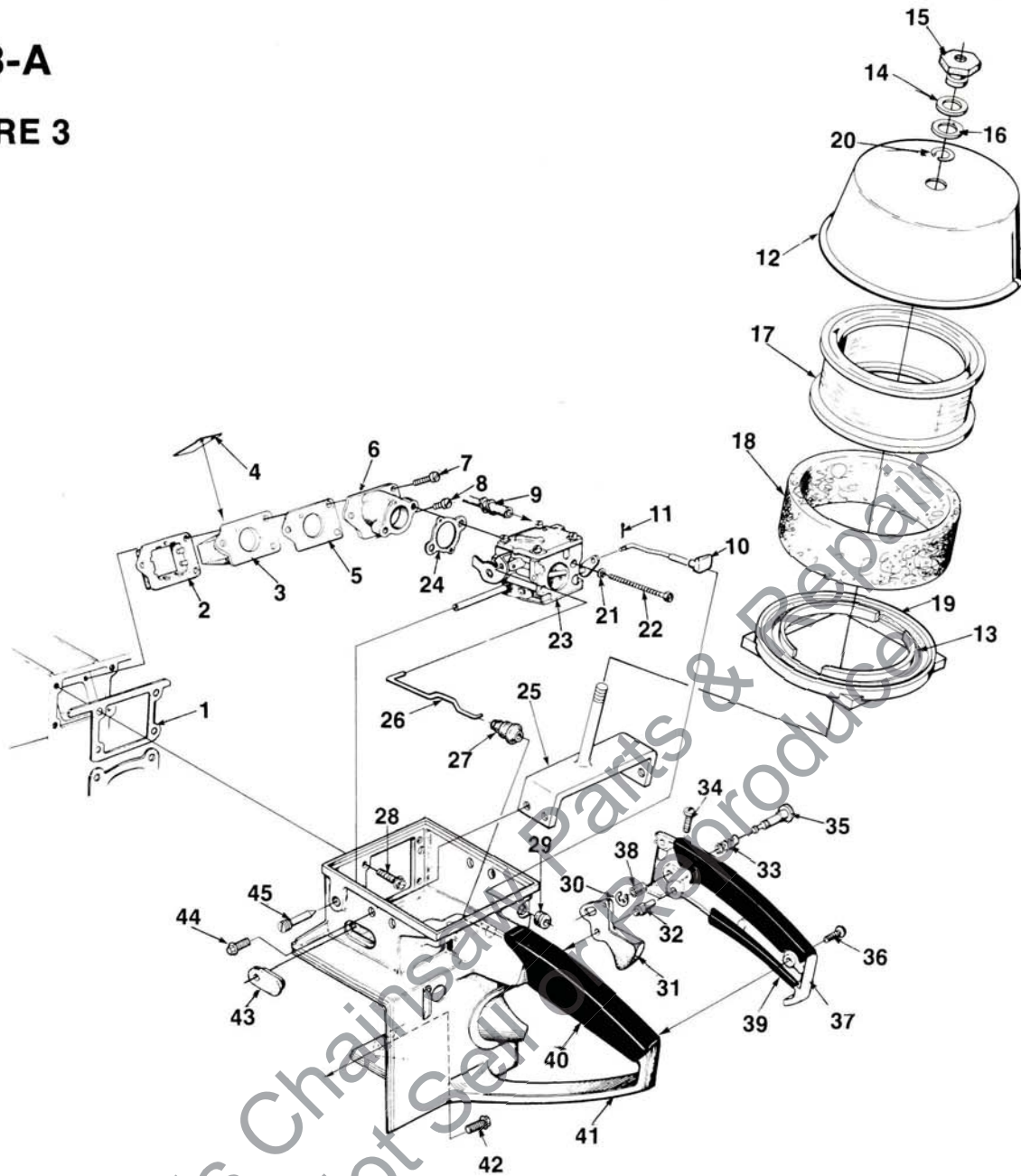


NO.	DESCRIPTION	PART NO.	QTY.	NO.	DESCRIPTION	PART NO.	QTY.
	MUFFLER KIT (Complete)	A-69864-C	1				
	Includes:						
1	SCREW-	95885	1	29	GASKET- Oil cover	65391	1
2	SCREW- Hex hd. 1/4-20 x 3	82280	2	30	COVER- Fuel tank	67153-2	1
3	SHIELD- Muffler	69842	1	31	BOLT	67807	2
4	CAP- Muffler	A-69836-1	1	32	SCREW- Fil hd. 8-32 x 5/8	82358	6
5	SUPPORT- Short	69844	1	33	SCREW- Fil hd. 8-32 x 1 3/4	82147	1
6	SUPPORT- Long	69843	1	34	SCREW- Fil hd. 8-32 x 2 3/16	95725	8
7	SCREEN- Spark arrestor	A-93900-A	1	35	STUD- Cylinder	55871	4
8	BODY- Muffler	A-69838-A	1	36	PIN- Dowel	63621	1
9	PLATE- Muffler	69839	1	37	SHIELD- Sawdust	A-64715	1
10	SPARK PLUG (After Lot #C240)	93561-S	1	38	LABEL- Warning	69847	1
	SPARK PLUG (Prior to Lot #C240)	63547-S	1	39	"O" RING	67559	1
	SPARK PLUG (Opt.) (Colder plug)	69027-S	1	40	WASHER- Lock	59705	2
11	NUT 1/4-28	96212	4	41	CAP- Fuel	A-69500-A	1
12	WASHER- Lock 1/4	83009	4		Includes:		
13	CYLINDER	A-48807-A	1	42	VALVE- Check	69451	1
	Includes:			43	FILTER	69454	1
14	GASKET- Cylinder	63778-1	1	44	GASKET- Fuel cap	69501	1
15	BEARING	58190-S	1	45	CHAIN	69502	1
16	PISTON & PIN ASSEMBLY	A-67989	1	46	RETAINER- Cap	96535	1
	Includes:			47	SCREW	82256-A	1
17	PISTON PIN RETAINING RING	64742	2	48	SCREW	63367	1
18	PISTON RING	55537	2	49	FILTER- Fuel	A-69923	1
19	ROD- Connecting	A-69658-A	1		Includes:		
	Includes:			50	FILTER ELEMENT	64083	1
20	SCREW	69919	2	51	FUEL LINE	65593-A	1
21	BEARING	69638	1	52	CONNECTOR	67080	1
22	BEARING- Needle (set of 28)	A-69056	1	53	CLAMP	65597-1	1
23	WASHER	68010	2	54	SCREW- Pan hd 6-32 x 5/16	80605	1
24	CRANKSHAFT	67168-4	1	55	FUEL LINE	65718-B	1
25	KEY	75078	1	56	RING- Retaining	58319-A	1
26	SCREW- Torx 10-32	70306	2	57	NUT- Hex 1/4-20	81204	1
27	CRANKCASE	A-53625	1	58	ADJUSTING PIN	93039	1
	Includes:			59	GASKET- Muffler	78098	1
28	SEAL	12282-A	1	60	WASHER	84020	1

ALWAYS FURNISH MODEL AND SERIAL NUMBER WHEN ORDERING PARTS.

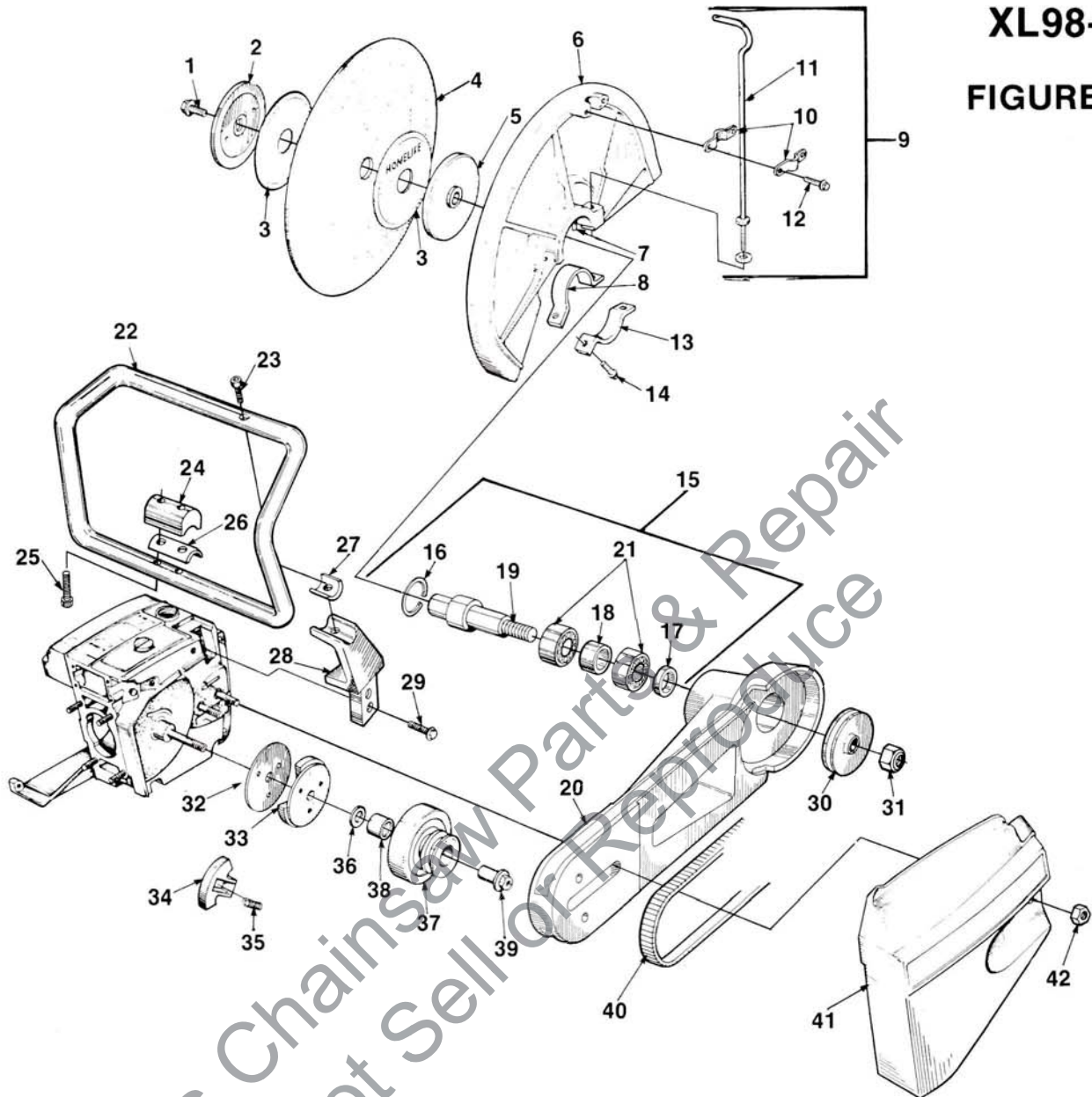
XL98-A

FIGURE 3



NO.	DESCRIPTION	PART NO.	QTY.	NO.	DESCRIPTION	PART NO.	QTY.
1	GASKET	63779-C	1	23	CARBURETOR	A-42208-A	1
2	RETAINER- Reed	63370-A	1		Includes:		
3	SEAT- Reed valve	63371-B	1	24	GASKET	67540	1
4	REED- Valve	63166-A	4	25	BRACKET- Cover	A-50955-1A	1
5	GASKET	65483	1	26	ROD- Throttle	63266-A	1
6	SPACER- Carburetor	A-67460-1	1	27	BOOT- Throttle rod	58348	1
7	SCREW- Pan hd. 8-32 x 1 1/4	82174	2	28	SCREW- Hex hd. 12-24 x 5/8	80676	4
8	SCREW- Pan hd. 8-32 x 1	82173	1	29	GROMMET	64862	1
9	FUEL LINE	65718-B	1	30	RING	58409	1
10	CHOKE ROD	67201-1	1	31	TRIGGER	65745	1
11	COTTER PIN	86324	1	32	PIN	65719	1
12	AIR FILTER COVER	A-50957-A	1	33	SPRING	58405	1
	Includes:			34	SCREW- 8-32 x 5/8	80023-2	1
13	GASKET	50951	1	35	PIN- Throttle	95671	1
14	WASHER	54536	1	36	SCREW- Pan hd. 8-32 x 1/2	80560	2
15	NUT	A-67639-1	1	37	COVER- Throttle handle	A-69045	1
16	WASHER	50950	1		Includes:		
17	FILTER ELEMENT- Air	54620-B	1	38	BUSHING	59064	1
18	FILTER ELEMENT- Air (Foam)	51173	1	39	GRIP- Throttle handle cover	68768	1
19	RING & GASKET ASSEMBLY	A-50952	1	40	GRIP- Throttle handle	68767	1
	Includes:			41	HANDLE- Throttle	A-47515	1
	GASKET (see item #13)	50951	1	42	SCREW- Hex hd. 12-24 x 7/8	80891	1
20	RING- Retaining	58319-A	1	43	GROMMET	51144	1
21	WASHER- Lock	83046	2	44	SCREW- Pan hd. 8-32 x 1/4	80575	4
22	SCREW- 10-32 x 1 7/8	82179	2	45	SCREW	63369	1

FIGURE 4

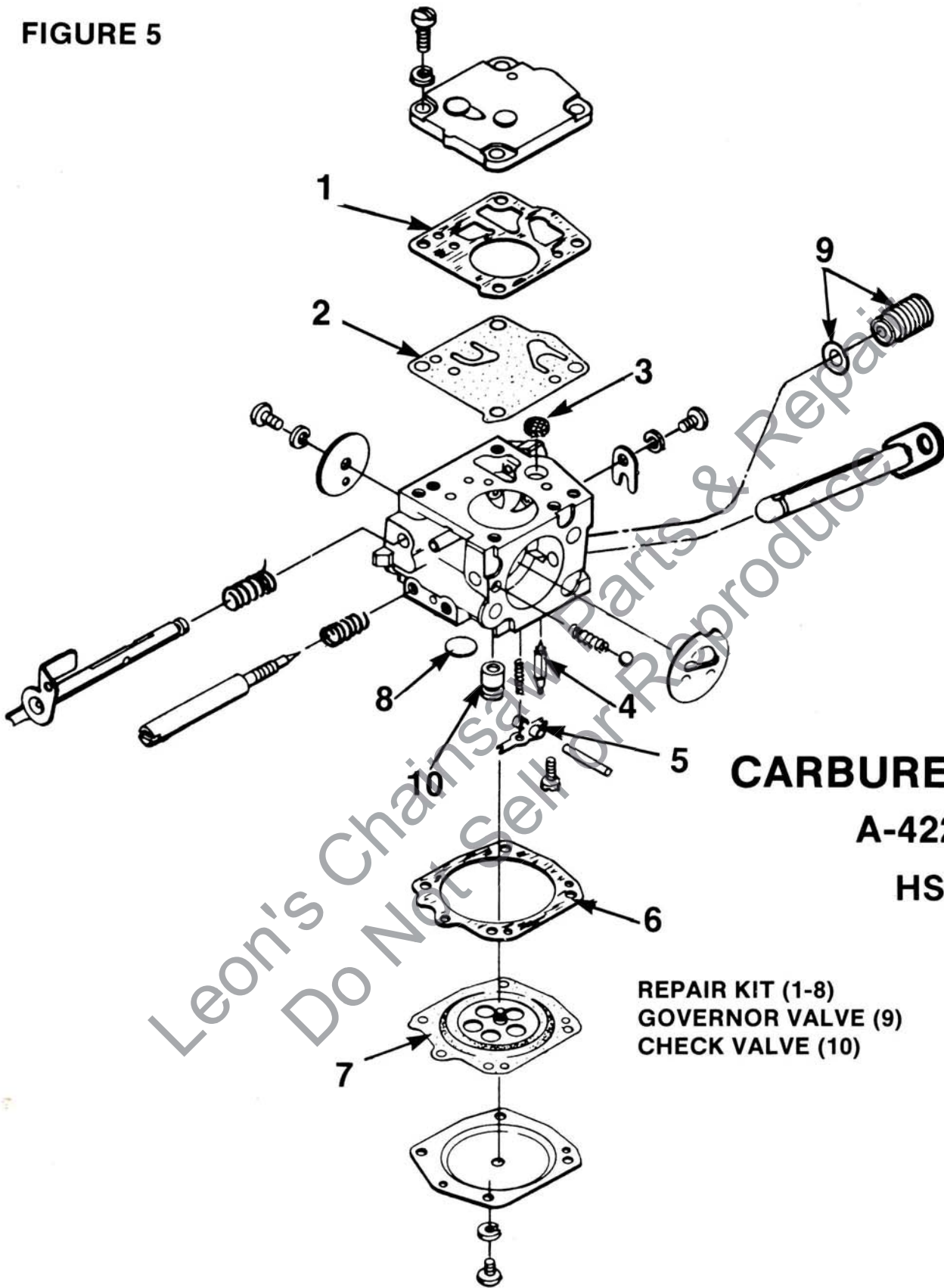


NO.	DESCRIPTION	PART NO.	QTY.	NO.	DESCRIPTION	PART NO.	QTY.
1	BOLT- Blade	59224	1	21	BEARING- Ball	63107	2
2	WASHER- Outer	69970-2A	1	22	HANDLE BAR	A-53573-4A	1
3	SPACER- Blotter	24174	2	23	SCREW- Nylock 1/4-20 x 1	80428-1	1
4	WHEEL- Resinoid (Ductile) (opt.)	68421-AS	1	24	SPACER	60724-2	1
	WHEEL- Resinoid (Metal) (opt.)	64597-BS	1	25	SCREW- Nylock 1/4-20 x 1 7/8	82242	2
	WHEEL- Resinoid (Masonry) (Std.)	64596-BS	1	26	MOUNT- Shock	51162	1
	BLADE- Saw (carbide tip) (opt.)	64595-A	1	27	MOUNT- Shock	51163	1
5	WASHER- Inner	69971-2	1	28	BRACKET- Handle bar	69829-2	1
6	BLADE GUARD & SLEEVE	A-51251-B	1	29	SCREW- Hex hd. 12-24 x 3/4	80867	2
	Includes:			30	PULLEY- Driven	69827-1	1
7	PIN- Spirol	43268	1	31	NUT- Stop 7/16-14	81231	1
8	SLEEVE- Blade guard	51198-2	1	32	COVER- Clutch	93628	1
	LABEL- Caution (not shown)	48922	1	33	PLATE- Clutch back	65760-1B	1
9	HOOK BOLT & CLAMP ASSEMBLY	A-65564	1	34	SHOE- Clutch	69461	3
	Includes:			35	SPRING- Clutch	67053	3
10	CLAMP	64383-1	2	36	WASHER	58833	1
11	BOLT- Hook	A-65552-1	1	37	PULLEY- Bearing & Arm	A-97893	1
12	SCREW- 1/4-20 x 1/2	80681-3	2		Includes:		
13	CLAMP- Blade guard	64651-1	1	38	BEARING	51151	1
14	SCREW- 1/4-20 x 13/16	80573	1	39	RACE- Inner bearing	A-97901	1
15	BLADE ARM KIT	A-43227	1	40	BELT- Drive	64498	1
	Includes:			41	COVER- Drivecase	53579-2	1
16	RING- Retaining	29527	1	42	NUT- 3/8-16	81089-2	2
17	SPACER- Pulley	43209	1				
18	SPACER- Inner	43210	1				
19	SHAFT- Blade	43211	1				
20	ARM- Blade (see note 1)	43226-2	1				

NOTE 1: For units prior to S/N 5351T140 use blade arm kit A-43227 for conversion.

XL98-A

FIGURE 5



CARBURETOR

A-42208-A

HS-135A

REPAIR KIT (1-8)

95698

GOVERNOR VALVE (9)

A-42209

CHECK VALVE (10)

A-51348

ACCESSORIES & TOOLS

JACK SCREW	A-24570	SLEEVE- Bearing & Shaft installation	23136-2
BIT- Driver torx (.250 shank)	24982-01	BEARING- Installation (2)	23420
BIT- Driver torx (.312 shank)	24982-02	WRENCH- Hex (2)	23528
KIT- Wet cutting	A-50561	SLEEVE- Protecting	23759
ROPE- Starting (250 ft.) #5	57084-1	ANVIL	23846-1
SPARK ARRESTOR (Do not use with A-69864-C)	A-63540-D	SPANNER- Wrench	A-23934
KIT- Emergency	A-47306	PLUG- Bearing installation	23955
Includes:		PLUG- Bearing & Seal installation	23956
OPERATOR'S KIT	A-24110-1C	PLUG- Seal installation	23957
GOGGLES- Safety	64598	JACK SCREW- Bearing removal	A-23962
CAN- Fuel safety	64599-A	ANVIL- Bearing installation	23968
SEALANT	24823	SLEEVE- Seal installation	23972
WRENCH- Socket	68651	PLATE- Crankshaft aligning	24006-1
WRENCH- Blade removal	A-24085-A	PULLER- Magneto	A-24290
SCREW DRIVERR	24541	PLUG- Seal installation	24302
COLLAR- Bearing installation	22820-3	SHIM- Plastic	24306
PLIERS- Snap ring	22828		
CARRYCASE W/INSERT	A-47390-B		

HOMELITE DIVISION OF TEXTRON INC.
14401 Carowinds Boulevard
Charlotte, N.C. 28217

Leon's Chainsaw Parts & Repair
Do Not Sell or Reproduce

3588RY

HOMELITE **TEXTRON**

Homelite Division of Textron Inc.