

HOMELITE[®]

XL-98-T

MULTI-PURPOSE

SAW

PARTS LIST

Leon's Chain Saw Parts & Repair
Do Not Sell or Reproduce

PART No. 24388-T

1st Edition 1-71

Printed in Canada

HOMELITE XL-98-T

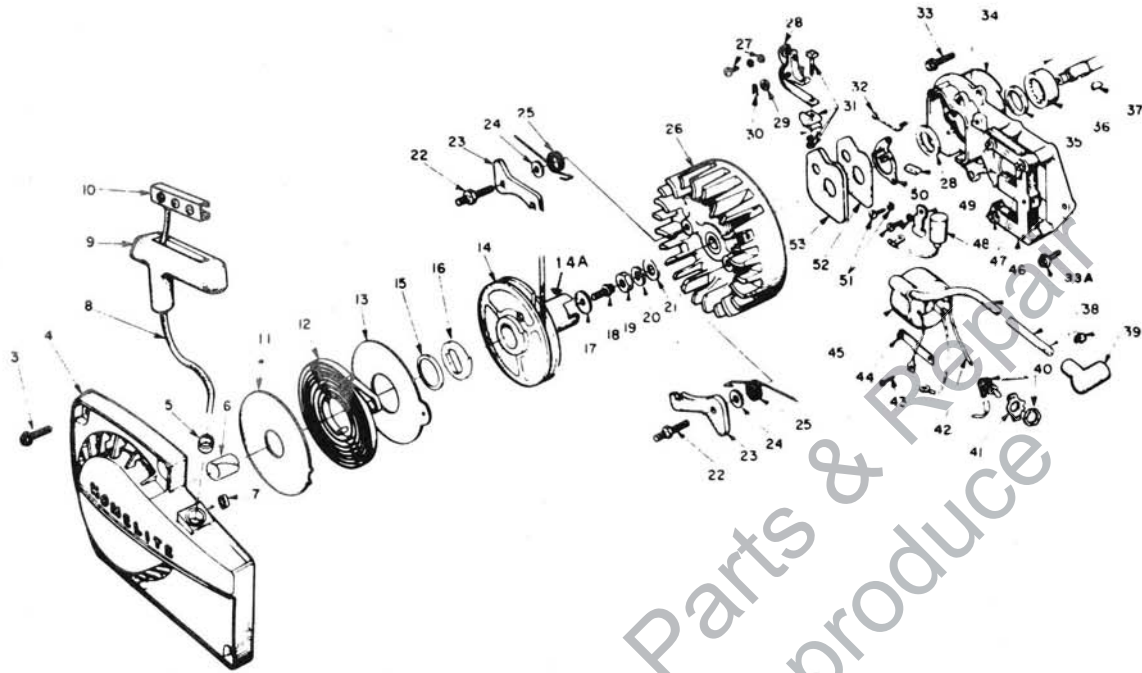


FIGURE 1

No.	Description	Part No.	Qty.
3	SCREW - hex, 12-24 x 5/8	80676	4
4	HOUSING - fan	A-64504-B	1
5	Includes: BUSHING - rope	59313	1
6	BUSHING - starter post	64443	1
7	BUSHING - rewind spring	65830	1
8	ROPE - starter	58806-T	1
9	CRIP - rope	58915-1	1
10	INSERT	58847	1
11	SHIELD - spring (inner)	63566	1
12	SPRING - rewind	63268-A	1
13	SHIELD - spring (outer)	63565-A	1
14	PULLEY - starter	64398-1A	1
14A	CUP - starter	64399	1
15	BUSHING - spring lock	64400	1
16	LOCK - spring	64049-A	1
17	WASHER - retaining	58763	1
18	SCREW - hex, 10-32 x 1/2	80648	1
19	NUT - hex, 3/8-24	81124	1
20	WASHER - lock, 3/8	83102	1
21	WASHER - flat, 3/8	84010-1	1
22	STUD - pawl	58757-B	2
23	PAWL - starter	58756	2
24	WASHER	58851	2
25	SPRING - pawl	58758	2
26	ROTOR	63406	1

No.	Description	Part No.	Qty.
27	SCREW GROUP - points	76421	1
28	POINT SET - w felts	A-63631	1
29	Includes: WASHER - point	28028	1
30	CLIP - post	28008	1
31	TERMINAL BLOCK GROUP	A-58934	1
32	SPRING - cover (clip)	76413	1
33	SCREW - hex, 1/4 - 20 x 5/8	80048	1
33A	Screw-Rd - 1/4 - 20 x 5/8	80251	1
34	PLATE - back	A-68027-T	1
35	Includes: SEAL	58688-A	1
36	BEARING - roller	63195	1
37	KEY	75078	1
38	LEAD - hi tension	63632	1
39	TERMINAL - spark plug	A-33055	1
40	SWITCH - w nut	A-57650-3	1
41	PLATE - "On - Off"	72085-A	1
42	LEAD - ground	A-59031	1
43	SCREW - coil clip	64090	1
44	CLIP - coil retaining	63726	1
45	COIL - ignition	63625	1
46	CORE - coil	63630	1
47	SCREW - core	64021	4
48	CONDENSER - ignition	63626	1
49	CLAMP - condenser	63627	1
50	RETAINER - felt	63628	1
51	SCREW	55411	3
52	GASKET - cover	63316	1
53	COVER - breaker box	63317	1

XL-98-T

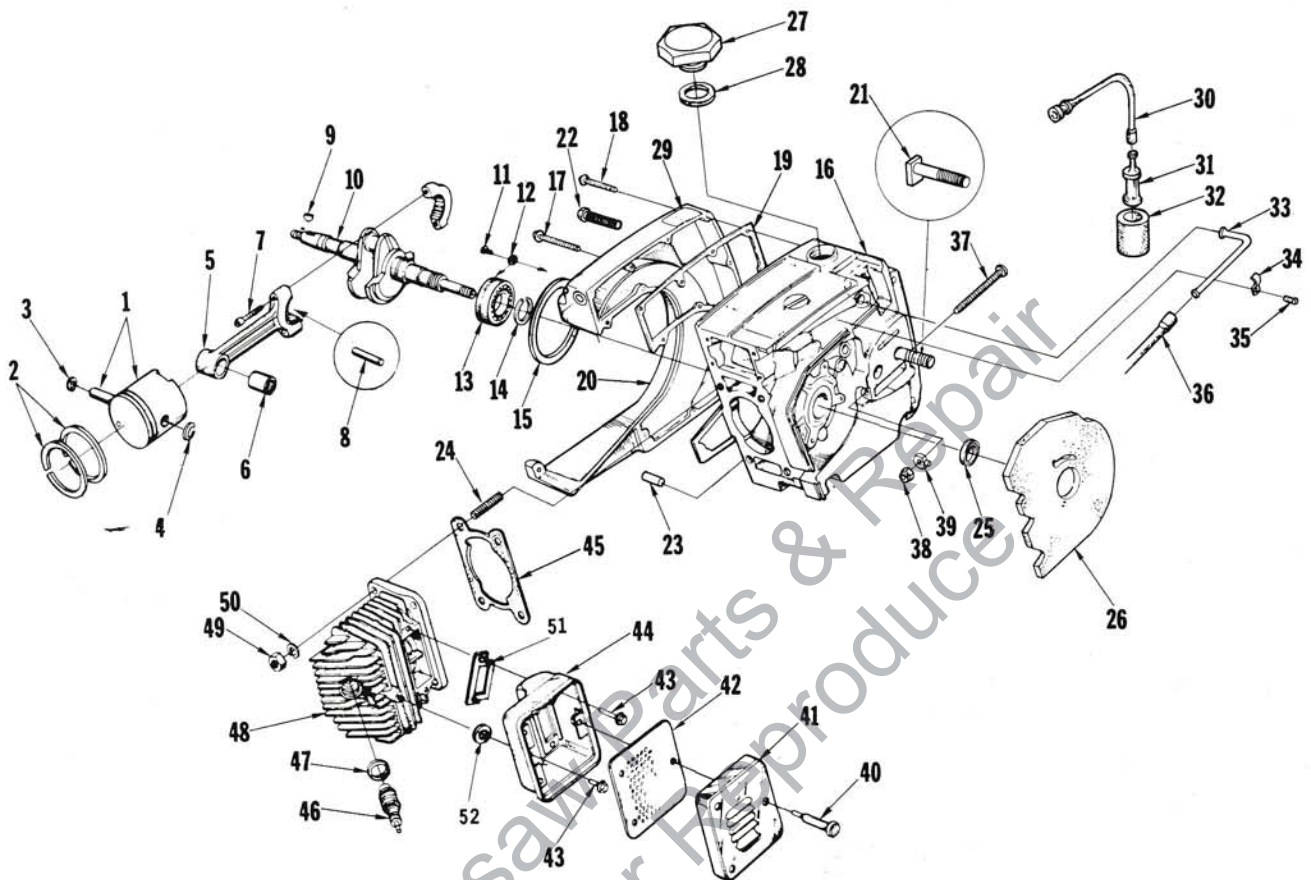


FIGURE 2

Key	Description	Part No.	Qty.
1	KIT, PISTON	A-121692	1
2	Includes: RING-piston	55038	2
3	RING-retaining	55095	1
4	RING-retaining	120105	1
5	ROD-connecting	A-63309-1	1
6	Includes: BEARING-needle	59351	1
7	SCREW-soc, 8-32 x 9/16	80805	2
8	BEARING-needle (set 25)	A-64621	1
9	KEY	75078	1
10	CRANKSHAFT	59625-1	1
11	SCREW-bearing retainer	59704	2
12	WASHER-lock	59705	2
13	BEARING-ball	58190-S	1
14	RING-retaining	58319-A	1
*15	"O" RING	67559	1
*16	CRANKCASE & TANK	A-53625-T	1
17	Includes: SCREW-fil., 8-32 x 1-3/4	82147	1
18	SCREW-fil., 8-32 x 5/8	82146	6
19	GASKET-fuel tank	65391	1
*20	COVER-fuel tank	67153-2	1
*21	BOLT-guide bar	67807	2
22	SCREW-fil., 8-32 x 2-3/16	82155	8
23	PIN-dowel	63621	2
24	STUD	55871	4
25	SEAL	58688-A	1
26	SHIELD-sawdust	A-64715	1

Key	Description	Part No.	Qty.
27	CAP ASSEMBLY-fuel filler	A-65283	1
28	Includes: GASKET	58957	1
29	DECAL-caution	64144	1
30	LINE-fuel (flexible)	65593	1
31	FILTER-fuel	A-59251	1
32	Includes: FILTER-felt	59253-1	1
33	CONNECTOR-fuel line	67080	1
34	CLAMP-fuel line	65597-1	1
35	SCREW-pan, 6-32 x 5/16	80605	1
36	LINE-fuel	65718	1
37	SCREW-adjusting	63367	1
38	NUT-flexloc, 1/4-20	81108	1
39	PIN-adjusting	67586-1	1
40	SCREW-shoulder	63855-A	3
41	CAP-muffler	63520-3T	1
42	BAFFLE-muffler	65633	1
43	SCREW-hex, 12-24 x 5/8	121430	3
44	BODY-muffler	A-63535-1T	1
45	GASKET-cylinder	63778-1	1
46	SPARK PLUG	63547-S	1
47	Includes: GASKET	25038	1
48	CYLINDER-2" bore	63012-2AT	1
49	NUT-hex, 1/4-28	81065-2	4
50	WASHER-lock, 1/4	83009	4
51	GASKET, muffler	120910	1
52	WASHER, muffler	84008	1

* Denotes new parts

XL-98-T

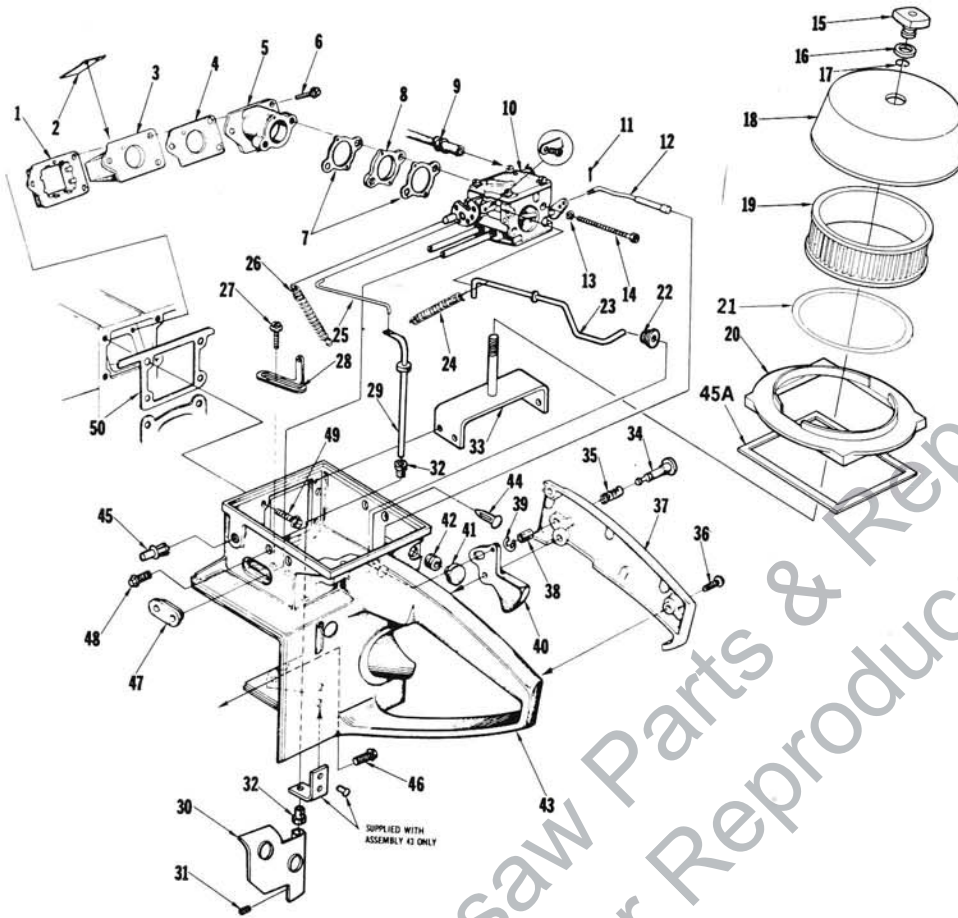


FIGURE 3

Key	Description	Part No.	Qty.
1	RETAINER-reed valve	63370-A	1
2	REED-valve	63166-A	4
3	SEAT-reed valve	63371-B	1
4	GASKET-reed valve seat	65483	1
5	SPACER-reed valve seat	63019-1A	1
6	SCREW-shoulder	65489	3
7	GASKET-carburetor	67540	2
8	SPACER-carburetor	67539	1
9	LINE-fuel	63335-A	1
10	CARBURETOR	A-64465	1
11	PIN-cotter	86324	1
12	ROD-choke	120858	1
13	WASHER-lock # 10	83046	2
14	SCREW-hex, 10-32 x 2	80965	2
15	NUT-cover mounting	A-64268	1
16	WASHER-nylon	54536	1
17	RING-retaining	58319-A	1
*18	COVER-air filter	53484-1	1
19	FILTER-air	54620	1
*20	RING-air filter mounting	53483	1
*21	GASKET-mounting ring	50566	1
22	BOOT-throttle rod	58348	1
23	ROD-throttle	A-64561	1
24	SPRING-throttle return	64562	1
25	LINK-carburetor	64558	1
*26	SPRING-governor	53494	1

Key	Description	Part No.	Qty.
*27	SCREW-pan, spinlock, 6-32 x 3/16	80930	2
28	PLATE-speed adjusting	64548	1
*	VANE & SHAFT ASSEMBLY	A-53640	
*29	Includes: SHAFT	A-53473	1
*30	VANE	A-53471	1
31	SCREW-set, 4-40 x 1/8	80893	2
32	BUSHING-air vane shaft	64547	2
*33	BRACKET-cover mounting	A-53488-1	1
34	PIN-throttle lock	58924-4	1
35	SPRING-throttle lock	58405	1
36	SCREW-pan,spinlock, 8-32 x 1/2	80560	2
37	COVER-throttle handle	A-63325-2A	1
38	Includes: BUSHING-nylon	59064	1
39	RING-retainer	58409	1
40	TRIGGER-throttle	58859	1
41	BUTTON-choke	57289-1	1
42	GROMMET	58362	1
*43	HANDLE-throttle	A-53626	1
44	Includes: PLUG-accordion	65889	1
*45	PLUG-plastic	53572	1
45A	GASKET	53482	1
46	SCREW-hex	80891	1
47	GROMMET	64664	1
48	SCREW-pan, 8-32 x 1/4	80575	4
49	SCREW-hex, spinlock 12-24 x 5/8	80676	4
50	GASKET-throttle handle	63779-B	1

* Denotes new parts

XL-98-T

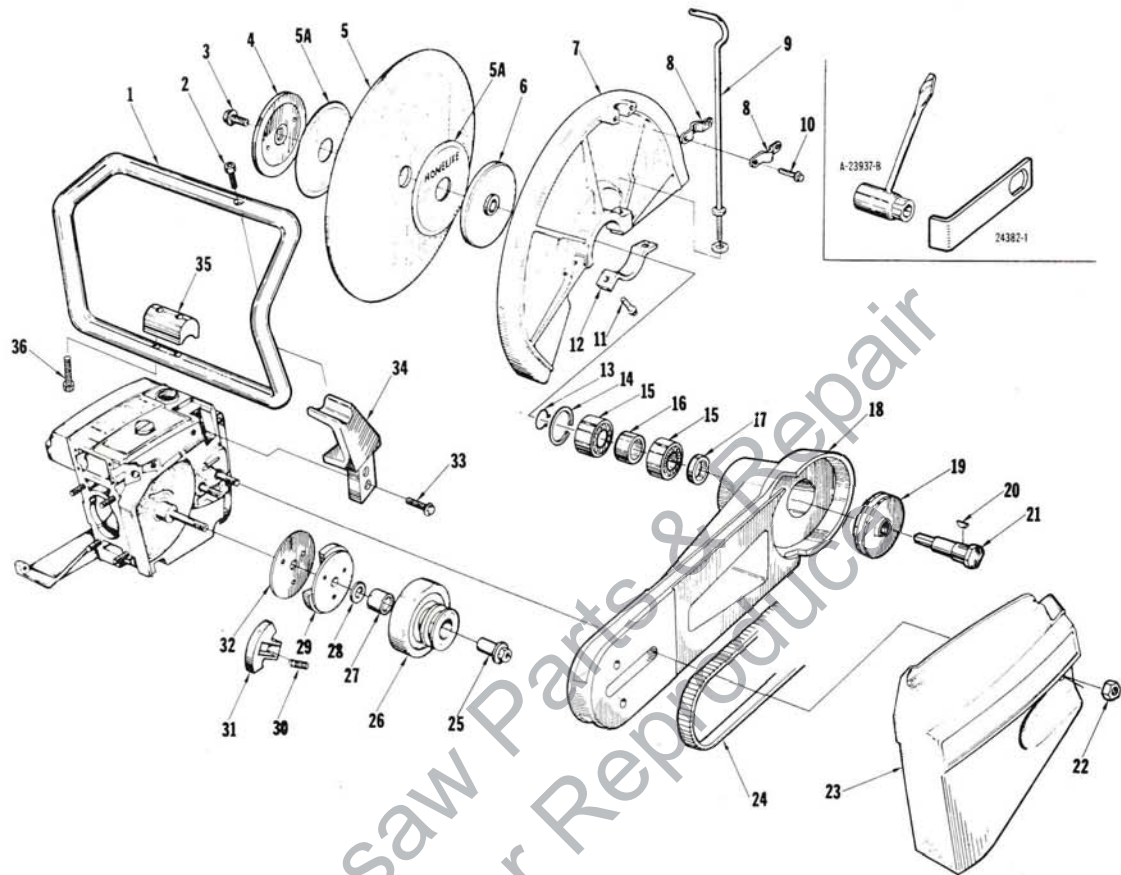


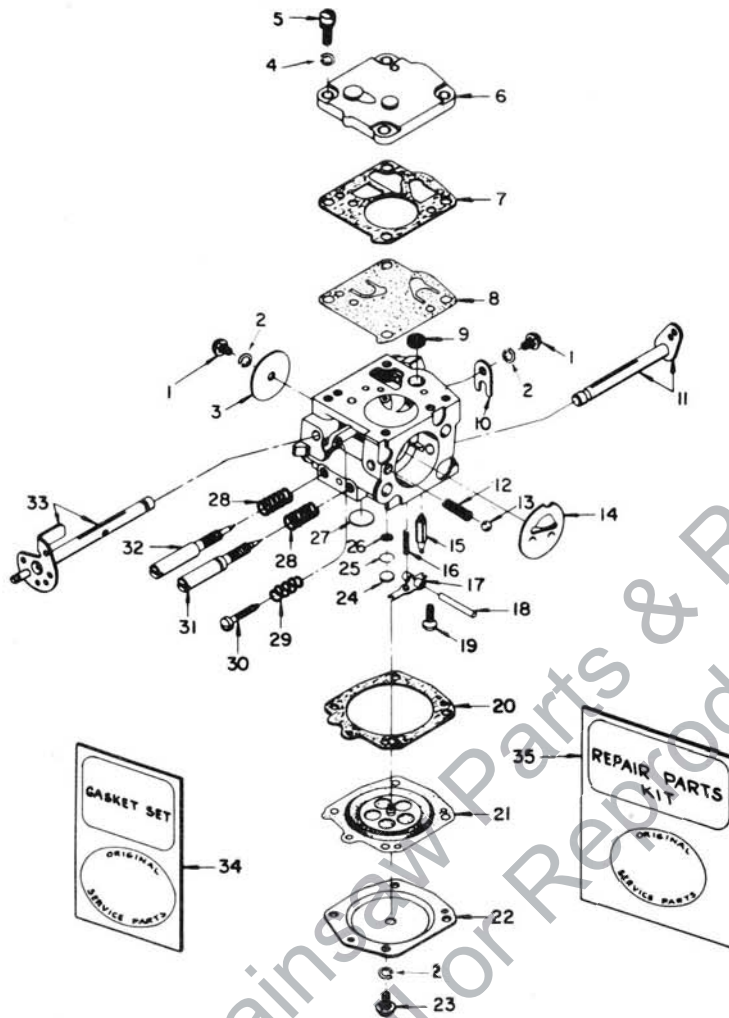
FIGURE 4

Key	Description	Part No.	Qty.
*1	HANDLE BAR	A-53573-2T	1
2	SCREW-soc., 1/4-20 x 1	80428	1
3	BOLT-blade	59224	1
*4	WASHER-outer	64113-2A	1
5	WHEEL-masonry (standard)	64596-AS	1
	BLADE-saw (optional)	64595	1
	WHEEL-metal (optional)	64597-AS	1
	WHEEL-stainless (optional)	65898-S	1
	WHEEL-transite (optional)	65930-S	1
	WHEEL-aluminum (optional)	65899-S	1
	WHEEL-copper (optional)	65996-S	1
	WHEEL-Ductile - Ironpipe (optional)	68421-S	1
5A	Includes: SPACER-blotter	24174	2
*6	WASHER-inner	53467-2	1
7	GUARD-blade	64095-2B	1
8	CLAMP	64383-1	2
9	BOLT-hook	A-65552-1	1
10	SCREW-hex, spinlock, 1/4-20 x 1/2	80681-3	2
11	SCREW-hex, spinlock, 1/4-20 x 13/16	80573	1
12	CLAMP	64651-1	1
13	RING-retaining	59128	1
14	RING-retaining	31080	1
15	BEARING-ball	64570-S	2
*16	SPACER	53461	1

Key	Description	Part No.	Qty.
*17	SPACER-inner	53465	1
*18	ARM-blade	A-53463-1	1
19	PULLEY-driven	64099-A	1
20	KEY	66612	1
*21	SHAFT-blade	53462	1
22	NUT-hex, 3/8-16	81089-2	2
*23	COVER-drivecase	53579-2	1
24	BELT-drive	64498	1
25	RACE-inner	64332	1
26	PULLEY-bearing and drum assembly	A-64104-A	1
27	Includes: BEARING	55204	1
28	WASHER-thrust (inner)	58833	1
29	PLATE-clutch	63053-1	1
30	SPRING-clutch	65842	3
31	SHOE-clutch	64569	3
32	COVER-clutch	63051	1
33	SCREW-hex, spinlock, 12-24 x 3/4	80867	2
*34	BRACKET-handle bar	53571-2	1
*35	SPACER-handle bar	53570-2	1
*36	SCREW-soc cap, 1/4-20 x 1-3/4	82191	2

* Denotes new parts

XL-98-T



A-64465
MODEL HS - 46A

No.	Part No.	Description	Qty.	No.	Part No.	Description	Qty.
1	\$80264	SCREW - rd. hd., 4-40 x 3/16	2	19	\$58992	SCREW - fulcrum pin retaining	1
2	\$83008-1	WASHER - lock #4	6	20	58978	GASKET - main diaphragm	1
3	25050	SHUTTER - throttle	1	21	\$58988	DIAPHRAGM - main control	1
4	83024	WASHER - lock #6	4	22	58979	COVER - main diaphragm	1
5	80275	SCREW - fil. hd., 6-32 x 3/8	4	23	80591	SCREW - rd. hd., 4-40 x 1/4	4
6	58975	COVER - fuel pump diaphragm	1	24	\$58994	PLUG - extension	1
7	58981	GASKET - pump diaphragm	1	25	57819	RING - retaining	1
8	\$58980-R	DIAPHRAGM - fuel pump	1	26	59500	SCREEN - channel	1
9	\$58974	SCREEN - fuel inlet	1	27	\$58991	PLUG - expansion	1
10	58982	CLIP - throttle shaft retaining	1	28	\$73075	SPRING - adjusting needle	2
11	58990	SHAFT & LEVER - choke	1	29	\$58973	SPRING - throttle stop	1
12	73264	SPRING - choke friction	1	30	\$58993	SCREW - throttle stop	1
13	25527	BALL - check	1	31	\$63676	NEEDLE - adjusting (main mixture)	1
14	58984	SHUTTER - choke	1	32	\$63677	NEEDLE - adjusting (idle mixture)	1
15	\$59717	NEEDLE - inlet	1	33	64648	SHAFT & LEVER - throttle	1
16	\$55759	SPRING - control lever	1	34	\$58971	GASKET SET	1
17	\$59716	LEVER - inlet control	1	35	64758	REPAIR KIT	1
18	\$58977	PIN - control lever fulcrum	1	*	63711	GASKET & DIAPHRAM SET	1

§ Indicates contents of Repair Parts Kit
* Denotes new parts

XL-98-T

SPECIAL TOOLS - Available on Order

A- 23937-B	WRENCH-combination
*24382-1	WRENCH-blade removal
22828	PLIERS-retaining ring (piston pin)
23528	WRENCH-socket screw (connecting rod)
23955	PLUG-needle bearing assembling (connecting rod)
A- 23137	JACKSCREW ASSEMBLY
23136-2	SLEEVE-bearing & shaft installation
22820-3	COLLAR-bearing installation
23846-1	ANVIL-crankshaft installation
23759	SLEEVE-seal protecting (crankcase)
23972	SLEEVE-seal installation (crankcase only)
23957	PLUG-seal installation (crankcase)
A- 23934	SPANNER WRENCH ASSEMBLY (clutch)
A- 23960,	PULLER-magneto rotor
23956	PLUG-bearing and seal installation (back plate)
A- 23962	JACKSCREW-bearing remover (back plate)
23846-2	ANVIL-roller bearing disassembling (back plate)
A- 23951	PLUG-piston pin removal
23420	PLUG-bearing installation
24006-1	PLATE-crankshaft aligning
23968	ANVIL-bearing installation
24113	PLUG-bearing installation
24114	SLEEVE-bearing removal
24302	PLUG-seal installation
24306	SHIM-plastic (black)

* Denotes new parts

ACCESSORIES AVAILABLE

A-53611-T	CARRYING CASE & KIT	
	Includes:	
A- 53610-T	CASE-carrying	
A- 24110-1-T	KIT-operators	
	Includes:	Qty.
64599	FUEL CAN-safety	1
64598	GOGGLES-safety	1
23130	OIL-engine (10 oz. can)	2
54620	ELEMENT-air filter	1
64498	BELT-drive	1
64597-A	WHEEL-metal	1
64595	BLADE-saw	1
A- 24266	KIT-starter rope	1



TERRY INDUSTRIES

A DIVISION OF **textron** CANADA LIMITED

180 Labrosse Ave., Pointe Claire, Que.

Leon's Chainsaw Parts & Repair
Do Not Sell or Reproduce