

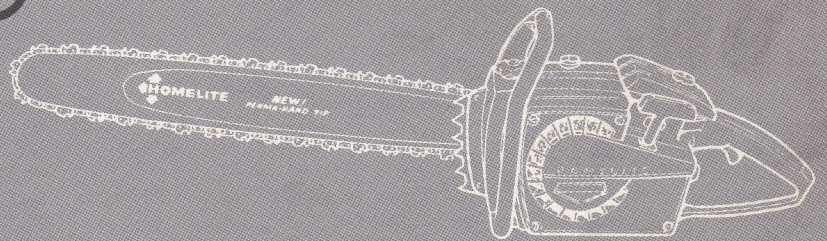
Price .25

# CHAIN SAW PARTS LIST

# XL-921 923 924

# HOMELITE®

*Leon's Chainsaw Parts & Repair  
Do Not Sell or Reproduce*



Part No. 24410



A **Textron**  
DIVISION  
PORT CHESTER, N.Y. U.S.A.

# XL-921 XL-923 XL-924

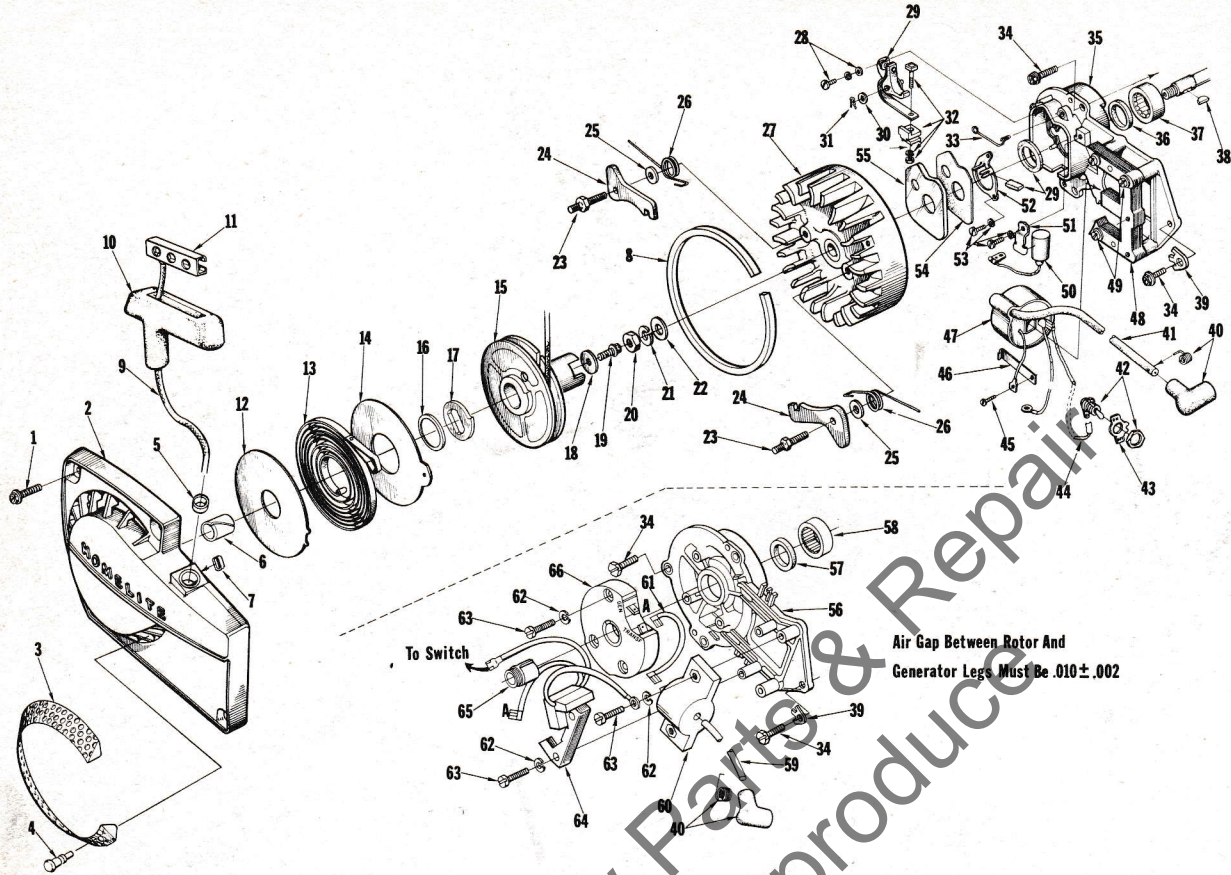


FIGURE 1

No.	Description	Part No.	Qty.			No.	Description	Part No.	Qty.		
			XL-921	XL-923	XL-924				XL-921	XL-923	XL-924
1	SCREW-hex, 12-24 x 5/8	80676	x	x	4	34	SCREW-hex, 1/4-20 x 5/8	80048-1	x	x	4
2	HOUSING-fan	A-64504-B	x	x	1	*35	PLATE-magneto back	A-68027	x	x	1
3	Includes: SCREEN-fan housing	A-64421	x	x	1	36	Includes: SEAL	58688-A	x	x	1
4	Includes: STUD	67191	x	x	11	37	BEARING-roller	63195	x	x	1
5	BUSHING-starting rope	67177	x	x	1	38	KEY-woodruff	75078	x	x	1
6	BUSHING-starter post	64443	x	x	1	39	WASHER-tab lock	67875-1	x	x	1
7	BUSHING-rewind spring	65830	x	x	1	40	TERMINAL-spark plug	A-33055	x	x	1
8	RING-air flow	67409	x	x	1	41	LEAD-high tension	63632	x	x	1
9	ROPE-starting	58806	x	x	1	42	SWITCH-toggle w/nut	A-57650-3	x	x	1
10	GRIP-starting rope	58915	x	x	1	43	PLATE-indicating "On-Off"	72085-A	x	x	1
11	INSERT-rope retaining	58847	x	x	1	44	LEAD-ground	A-59031	x	x	1
12	SHIELD-spring (inner)	63566	x	x	1	45	SCREW-ground	64090	x	x	1
13	SPRING-rewind	63268-A	x	x	1	46	CLIP-coil retaining	63726	x	x	1
14	SHIELD-spring (outer)	63565-A	x	x	1	47	COIL-ignition	63625	x	x	1
15	PULLEY-rewind starter	A-64446	x	x	1	48	CORE-coil	63630	x	x	1
16	Includes: BUSHING-spring lock	64400	x	x	1	49	SCREW-coil core	64021	x	x	4
17	LOCK-rewind spring	64049-A	x	x	1	50	CONDENSER	63626	x	x	1
18	WASHER-retaining	58763	x	x	1	51	CLAMP-condenser	63627	x	x	1
19	SCREW-hex, 10-32 x 1/2	80648	x	x	1	52	RETAINER-felt	63628	x	x	1
20	NUT-hex, 3/8-24	81124	x	x	1	53	SCREW-contact plate	55411	x	x	3
21	WASHER-lock, 3/8	83102	x	x	1	54	GASKET-breaker box cover	63316	x	x	1
22	WASHER-flat, 3/8	84010-1	x	x	1	55	COVER-breaker box	63317	x	x	1
23	STUD-shoulder	58757-B	x	x	2	56	PLATE-back	A-67618		x	1
24	PAWL-starter	58756	x	x	2	57	Includes: SEAL	58688-A		x	1
25	WASHER	58851	x	x	2	58	BEARING-roller	63195		x	1
26	SPRING-starter pawl	58758	x	x	2	59	LEAD-high tension	67166		x	1
27	ROTOR-magneto	63406	x	x	1	60	COIL-transformer	67164		x	1
	ROTOR-magneto	67165			x	61	LEAD-transformer	67167		x	1
28	SCREW-contact plate	76421	x	x	1	62	WASHER-lock, #8	83022		x	7
29	POINTS-breaker	A-63631	x	x	1	63	SCREW-pan, 8-32 x 3/4	82178		x	7
30	Includes: WASHER-point	28028	x	x	1	64	COIL-core and generator	67163		x	1
31	CLIP-post	28008	x	x	1	65	CAP-dust	64002		x	1
32	BLOCK-terminal	A-58934	x	x	1	66	MODULE-ignition	67162		x	1
33	SPRING-clip cover	76413	x	x	1						

\* Denotes new parts

# XL-921 XL-923 XL-924

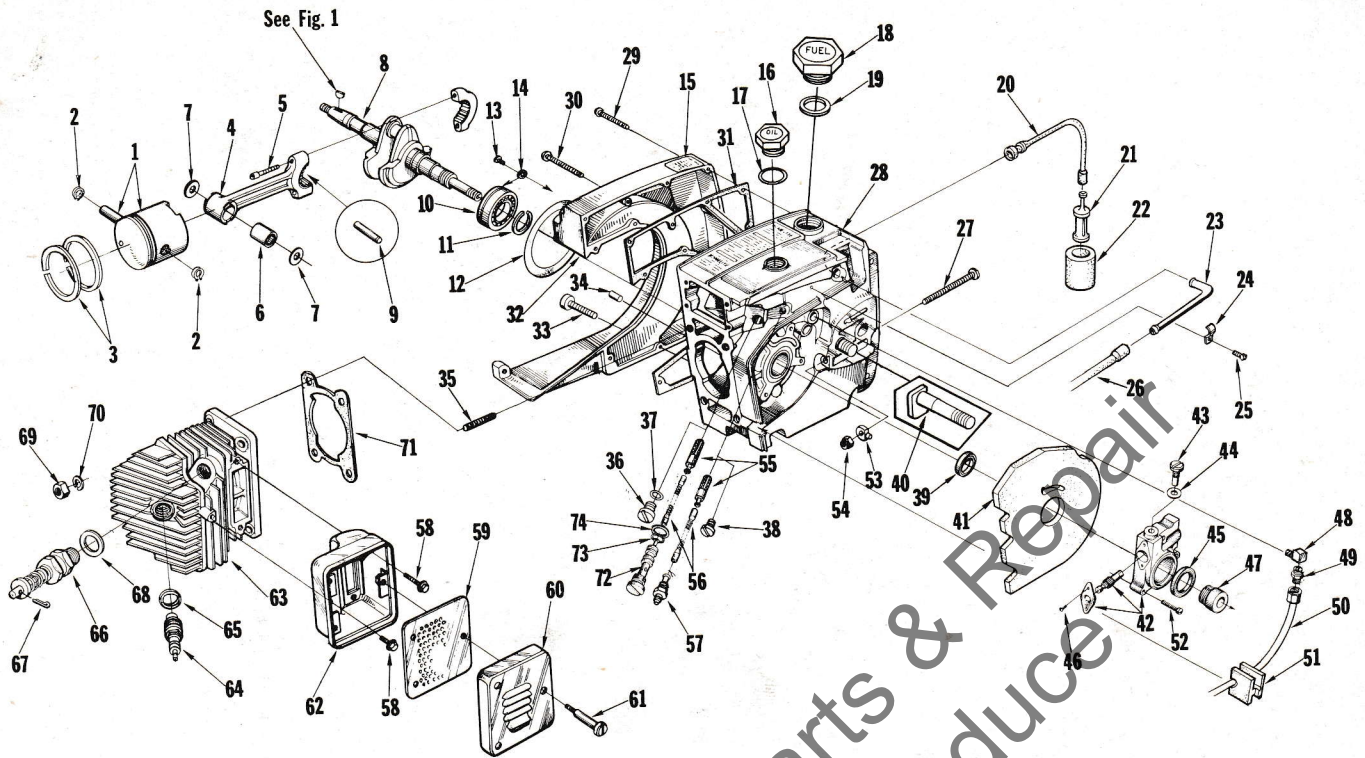


FIGURE 2

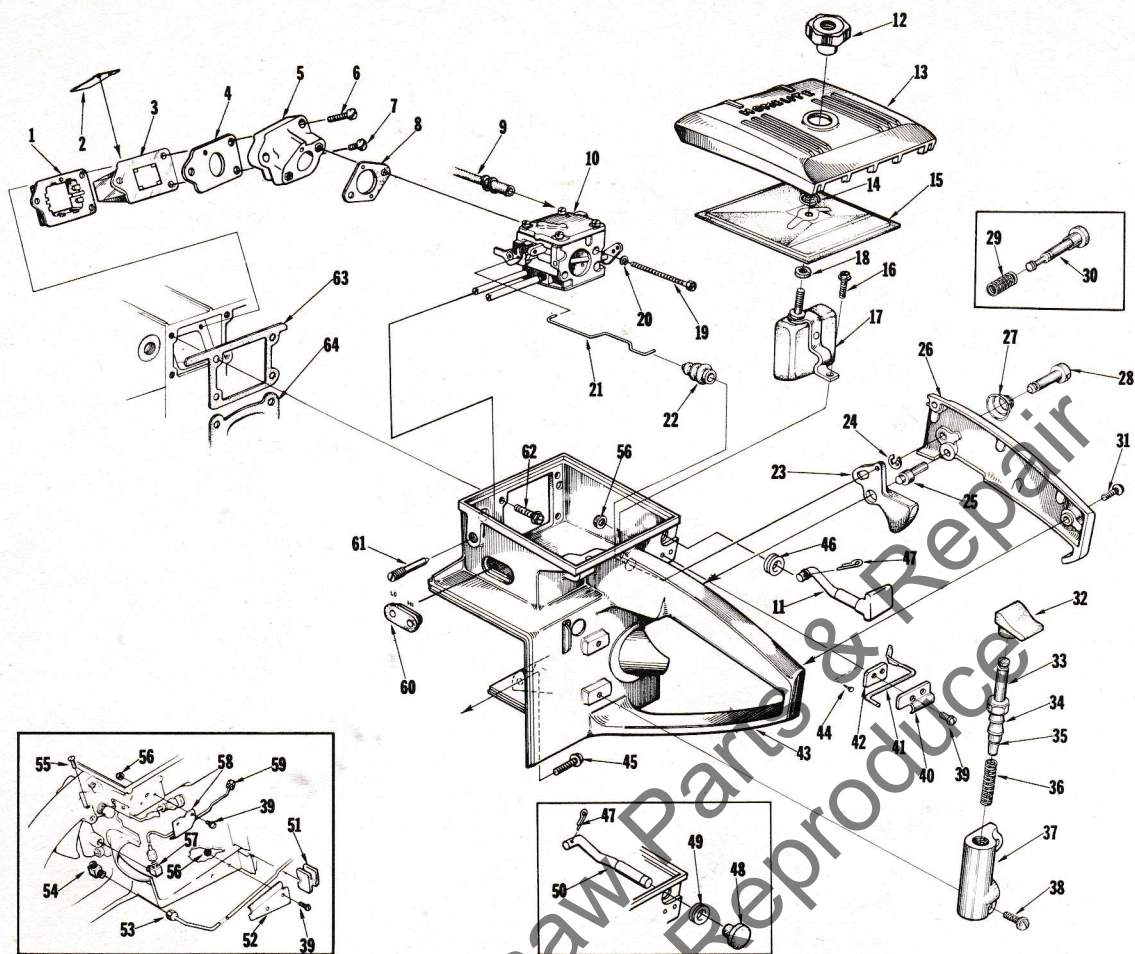
No.	Description	Part No.	XL-921	XL-923	XL-924	Qty.	No.	Description	Part No.	XL-921	XL-923	XL-924	Qty.
* 1	PISTON & PIN	A-68033	x			1	35	STUD	55871	x	x	x	4
* 2	PISTON & PIN	A-67989		x	x	1	36	CAP	63115	x	x	x	1
2	Includes: RING-piston pin retaining	64742	x	x	x	2	37	WASHER	58138	x	x	x	1
3	PISTON RING	55038				2	38	PLUG-pipe	28097	x	x	x	1
	PISTON RING	55537				2	39	SEAL	58688-A	x	x	x	1
* 4	ROD-connecting	A-68008	x	x	x	1	* 40	BOLT-guide bar	67158	x	x	x	2
	ROD-connecting, See Note 1	A-63309-1	x	x	x	1	41	SHIELD-sawdust	A-64715	x	x	x	1
5	Includes: SCREW-socket, 8-32 x 9/16	80805	x	x	x	2	42	PUMP-automatic oil	A-64384	x	x	x	1
6	BEARING-needle	59351	x	x	x	1	43	Includes: SCREW-cam	64102-A	x	x	x	1
* 7	WASHER-thrust, See Note 2	68010	x	x	x	2	44	GASKET-cam screw	59736	x	x	x	1
* 8	CRANKSHAFT	67168	x			1	45	SEAL-felt	59926	x	x	x	1
* 9	BEARING-needle (28 rollers)	A-64621	x	x	x	1	46	SCREW-pan, 4-40 x 1/4	80919	x	x	x	2
10	BEARING-ball	58190-S	x	x	x	1	47	WORM-gear	59675	x	x	x	1
11	RING-retaining	58319-A	x	x	x	1	48	CONNECTOR-elbow	31734	x	x	x	1
12	"O" RING	67559	x	x	x	1	49	FITTING-tube	65696	x	x	x	1
13	SCREW-bearing retaining	59704	x	x	x	2	50	LINE-oil (intake)	A-65705	x	x	x	1
14	WASHER-lock	58705	x	x	x	2	51	GROMMET-oil line	65357	x	x	x	1
15	DECAL-caution	64144	x	x	x	1	52	SCREW-fil, 8-32 x 3/4	80248	x	x	x	3
16	CAP-oil filler	A-65284	x	x	x	1	53	PIN-guide bar adjusting	67586-1	x	x	x	1
17	Includes: "O" RING	65133	x	x	x	1	54	NUT-flexloc, 1/4-20	81108	x	x	x	1
	VALVE-check (not shown)	63718	x	x	x	1	55	FILTER-oil	A-64293	x			1
18	CAP-fuel filler	A-65283	x	x	x	1		FILTER-oil	A-64293	x	x		2
19	Includes: GASKET	58957	x	x	x	1	56	LINE-oil pick-up	63605	x			1
	VALVE-check (not shown)	63718	x	x	x	1		LINE-oil pick-up	59000		x	x	2
20	LINE-fuel (flexible)	65593	x	x	x	1	57	CONNECTOR-oil filter	65695	x	x	x	1
21	FILTER-fuel	A-59251	x	x	x	1	58	SCREW-hex, 12-24 x 5/8	80978	x	x	x	3
22	Includes: FILTER-fuel	59253-1	x	x	x	1	59	BAFFLE-muffler	63521-A	x	x	x	1
23	CONNECTOR-fuel line	67080	x	x	x	1	60	CAP-muffler	63520-3	x	x	x	1
24	CLAMP-fuel line	65597-1	x	x	x	1	61	SCREW-shoulder	63855-A	x	x	x	3
25	SCREW-pan, 6-32 x 5/16	80605	x	x	x	1	62	BODY-muffler	A-63535-1A	x	x	x	1
26	LINE-fuel	65718	x	x	x	1	* 63	CYLINDER-2" bore	67455-1	x			1
27	SCREW-guide bar adjusting	63367	x	x	x	1	* 64	CYLINDER-2-1/16" bore	67458-1	x	x		1
* 28	CRANKCASE & TANK	A-68023	x	x	x	1	64	SPARK PLUG	63547-S	x	x	x	1
	Includes: GASKET (not shown)	58338	x	x	x	1	65	Includes: GASKET	25038	x	x	x	1
	CAP (not shown)	58339	x	x	x	1	* 66	VALVE-decompression	A-68026	x	x	x	1
29	SCREW-fil, 8-32 x 5/8	82146	x	x	x	6	* 67	Includes: PIN-cotter	86329	x	x	x	1
30	SCREW-fil, 8-32 x 2-3/16	82155	x	x	x	8	* 68	WASHER-copper	67321	x	x	x	1
* 31	GASKET-fuel tank	67159	x	x	x	1	69	NUT-hex, 1/4-28	81065-2	x	x	x	4
32	COVER-fuel tank	67153-2	x	x	x	1	70	WASHER-lock, 1/4	83009	x	x	x	4
33	SCREW-fil, 8-32 x 1-3/4	82147	x	x	x	1	71	GASKET-cylinder	63778-1	x	x	x	1
34	PIN-dowel	63621	x	x	x	2	72	TUBE-oil line	63452-A	x	x	x	1
							73	"O" RING	58406	x	x	x	1
							74	GASKET-oil line tube	63751	x	x	x	1

NOTE 1 When using A-63309-1 Connecting Rod do not use 68010 Thrust Washers.

NOTE 2 Use only with A-68008 Connecting Rod.

\* Denotes new parts

# XL-921 XL-923 XL-924



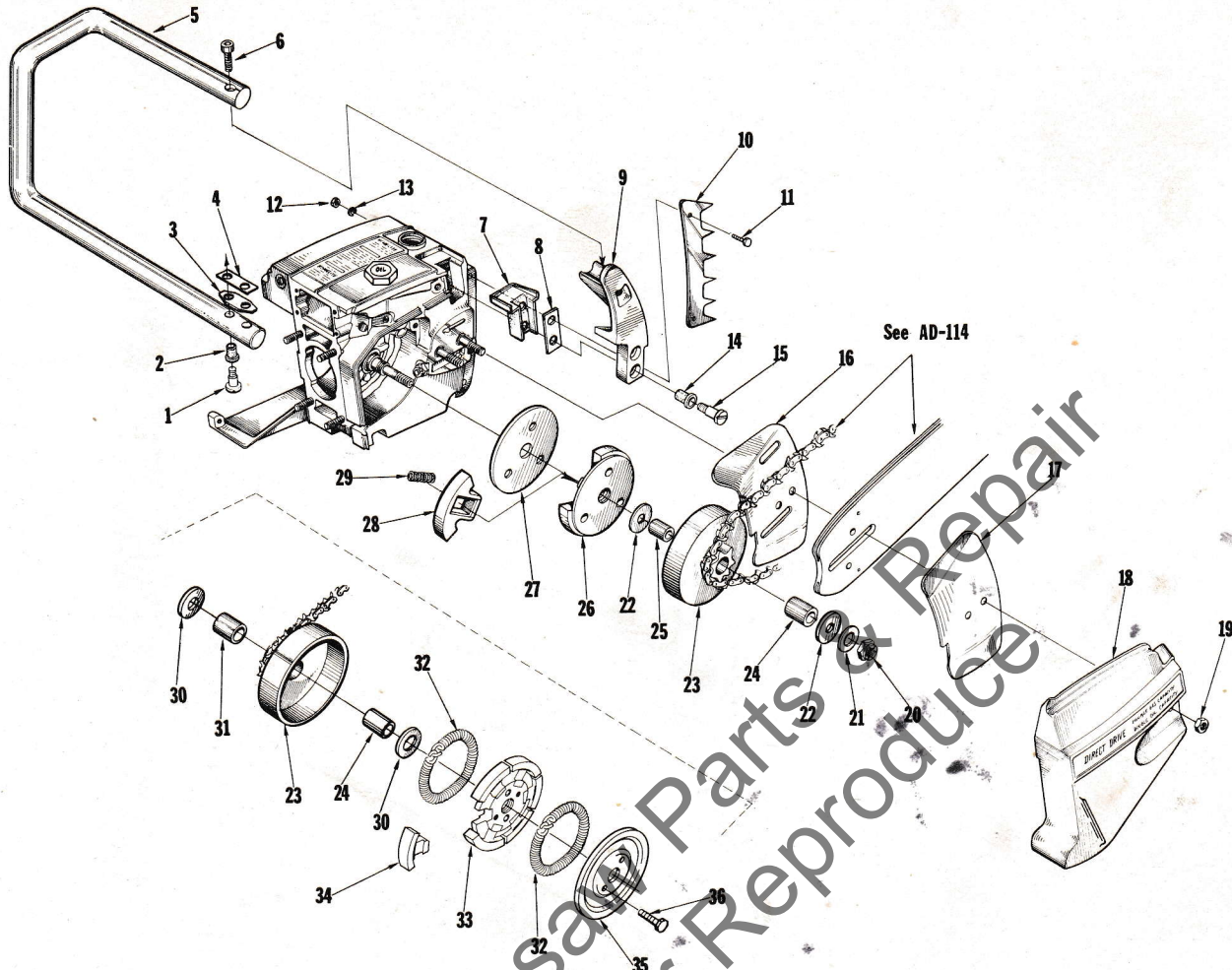
**FIGURE 3**

No.	Description	Part No.	XL-921	XL-923	XL-924	Qty.	No.	Description	Part No.	XL-921	XL-923	XL-924	Qty.
1	RETAINER-reed valve	63370-A	x	x	x	1	33	PLUNGER-oil pump	A-57834-16	x	x	x	1
2	VALVE-reed	63166-A	x	x	x	4	34	Includes: "O" RING-shaft	59074	x	x	x	1
3	SEAT-reed	63371-B	x	x	x	1	35	"O" RING-plunger	74388	x	x	x	1
4	GASKET-reed valve seat	65483	x	x	x	1	36	SPRING-compression	59293	x	x	x	1
* 5	MANIFOLD-intake	A-67460-1	x	x	x	1	37	BODY-oil pump	63343-5	x	x	x	1
* 6	SCREW-pan, 8-32 x 1-1/8	82196	x	x	x	2	38	SCREW-hex, 8-32 x 7/8	80568	x	x	x	2
7	SCREW-pan, 8-32 x 1	82173	x	x	x	1	39	SCREW-pan, 6-32 x 3/8	80571	x			4
8	GASKET-carburetor	67540	x	x	x	1		SCREW-pan, 6-32 x 3/8	80571	x	x		6
9	LINE-fuel	65518	x	x	x	1	40	CLAMP-lever	65821-1	x	x		1
* 10	CARBURETOR-alternate	A-67880	x	x	x	1	41	LEVER-poppet valve	65630	x	x		1
* 11	CARBURETOR	A-67887-A	x	x	x	1	42	PLATE-lever	65629-1	x	x		1
11	Includes: ROD-choke. See Note 1	67201-1	x	x	x	1	* 43	HANDLE-throttle	A-68025	x	x	x	1
* 12	NUT-cover-mounting	A-67639	x	x	x	1	44	Includes: PLUG-accordion	65889	x	x	x	2
13	COVER-air filter element	63634-1	x	x	x	1	45	SCREW-hex, 12-24 x 7/8	80891	x	x	x	1
14	RING-bearing retaining	58319-A	x	x	x	1	46	GROMMET	64862	x	x	x	1
15	FILTER ELEMENT-air	63341	x	x	x	1	47	PIN-cotter	86324	x	x	x	1
16	SCREW-hex, 12-24 x 1/2	80821	x	x	x	1	48	BUTTON-choke	57289-1	x	x	x	1
17	DEFLECTOR-air w/bracket	A-67101	x	x	x	1	49	GROMMET	58362	x	x	x	1
18	Includes: GASKET-mounting nut	58392-1	x	x	x	1	50	ROD-choke	A-63337	x	x	x	1
19	SCREW-hex, 10-32 x 1-7/8	82179	x	x	x	2	51	GROMMET-oil line	65357	x	x	x	1
20	WASHER-lock, #10	83046	x	x	x	2	52	CLAMP-oil line	65513-1	x	x	x	1
21	ROD-throttle	63266-A	x	x	x	1	53	LINE-oil	A-65682	x	x	x	1
22	BOOT-throttle rod	58348	x	x	x	1	54	VALVE-check	A-65515	x	x	x	1
23	TRIGGER-throttle	65745	x	x	x	1	55	SCREW-fil, 8-32 x 5/8	80023-2	x	x	x	1
24	RING-retaining	58409	x			1	56	NUT-lock, 6-32	81126	x			4
25	PIN-throttle lock adjusting	65719	x	x	x	1		NUT-lock, 6-32	81126	x	x		6
26	COVER-throttle handle	A-65882-A	x	x	x	1	57	VALVE-check	A-65502	x	x	x	1
	Includes: BUSHING-throttle lock						58	CLAMP-oil line	65660-1	x	x	x	1
	(not shown)	59064	x			1	59	LINE-oil	A-65705	x	x	x	1
	(not shown) BUSHING-throttle lock	65878		x	x	1	60	GROMMET	58858	x	x	x	1
27	SPRING-throttle lock	65714		x	x	1	61	SCREW-idle adjustment	63369	x	x	x	1
28	PIN-throttle lock	65822		x	x	1	62	SCREW-hex, 12-24 x 5/8	80676	x	x	x	4
29	SPRING-throttle lock	58405	x			1	63	GASKET-throttle handle	63779-B	x	x	x	1
30	PIN-throttle lock	58924	x			1	64	GASKET-cylinder	63778-1	x	x	x	1
31	SCREW-pan, 8-32 x 1/2	80560	x	x	x	2							
32	BUTTON-oil pump plunger	63622	x	x	x	1							

NOTE 1- Not included in A-67880 Carburetor.

\* Denotes new parts.

# XL-921 XL-923 XL-924



No.	Description	Part No.	Qty.			No.	Description	Part No.	Qty.			
			XL-921	XL-923	XL-924				XL-921	XL-923	XL-924	
1	SCREW-shoulder	65520	x	x	x	2	20	NUT-flexlock, 3/8-24	81192	x	x	1
2	GROMMET-handle bar	65518	x	x	x	2	21	WASHER-flat, 3/8	84010-1	x	x	1
3	PLATE-handle bar	65599	x	x	x	1	22	WASHER-thrust, NOTE 1	58833	x	x	2
4	SPACER-handle bar	65542	x	x	x	1	23	DRUM & HUB-rim type	A-65989	x	x	1
5	HANDLE BAR-flush cut	A-65860-1	x	x	x	1		DRUM & HUB-rim type	A-65990	x	x	1
	KIT-handle bar (not shown)	A-65894	†	†	†	1		SPROCKET-3/8 pitch, 7 tooth (rim type)	OM-68210	x	x	x
	Includes: HANDLE BAR-wrap around	A-65814-2	†	†	†	1		.404 pitch, 7 tooth (rim type)	OM-10513	†	†	†
	GUARD-chain	64867-1	†	†	†	1		SPROCKET & DRUM-3/8 pitch, 8 tooth	A-65885	†	†	†
	BRACKET-handle bar	65607-5	†	†	†	1		SPROCKET & DRUM-.404 pitch, 7 tooth	A-65886	†	†	†
6	SCREW-socket, 1/4-20 x 1	80428	x	x	x	1		SPROCKET & DRUM-.404 pitch, 8 tooth	A-65887	†	†	†
7	MOUNT-shock	65509	x	x	x	1		SPROCKET & DRUM-3/8 pitch, 7 tooth	A-65884	†	†	†
8	PLATE-handle bar bracket	65598	x	x	x	1	24	BEARING-roller	64124	x	x	x
9	BRACKET-handle bar	65607-2	x	x	x	1	25	RACE-inner	65746	x	x	1
10	KIT-spiked bumper	A-63720	†	x	x	1	26	PLATE-clutch	63053-1	x	x	1
11	Includes: SCREW-hex, 12-24 x 3/4	80867	†	x	x	2	27	COVER-clutch	63051	x	x	1
12	NUT-12-24	81068	†	x	x	2	28	SHOE-clutch	64569	x	x	3
13	WASHER-lock, #12	83056	†	x	x	2	29	SPRING-clutch	65842	x	x	3
14	GROMMET	65519	x	x	x	2	30	WASHER-thrust, NOTE 2	63462	x	x	2
15	SCREW-shoulder	65521	x	x	x	2	31	RACE-inner	64129	x	x	1
*16	PLATE-guide bar (inner)	67160	x	x	x	1	32	SPRING-clutch	67441	x	x	2
*17	PLATE-guide bar (outer)	67161	x	x	x	1	33	SPIDER-clutch	65723-2	x	x	1
*18	COVER-drivecase	67156-3	x	x	x	1	34	SHOE-clutch	67896-1	x	x	6
19	NUT-hex, 3/8-16	81089-2	x	x	x	2	35	COVER-clutch	58751-1	x	x	1
							36	SCREW-hex, 10-32 x 1/2	80361-1	x	x	2

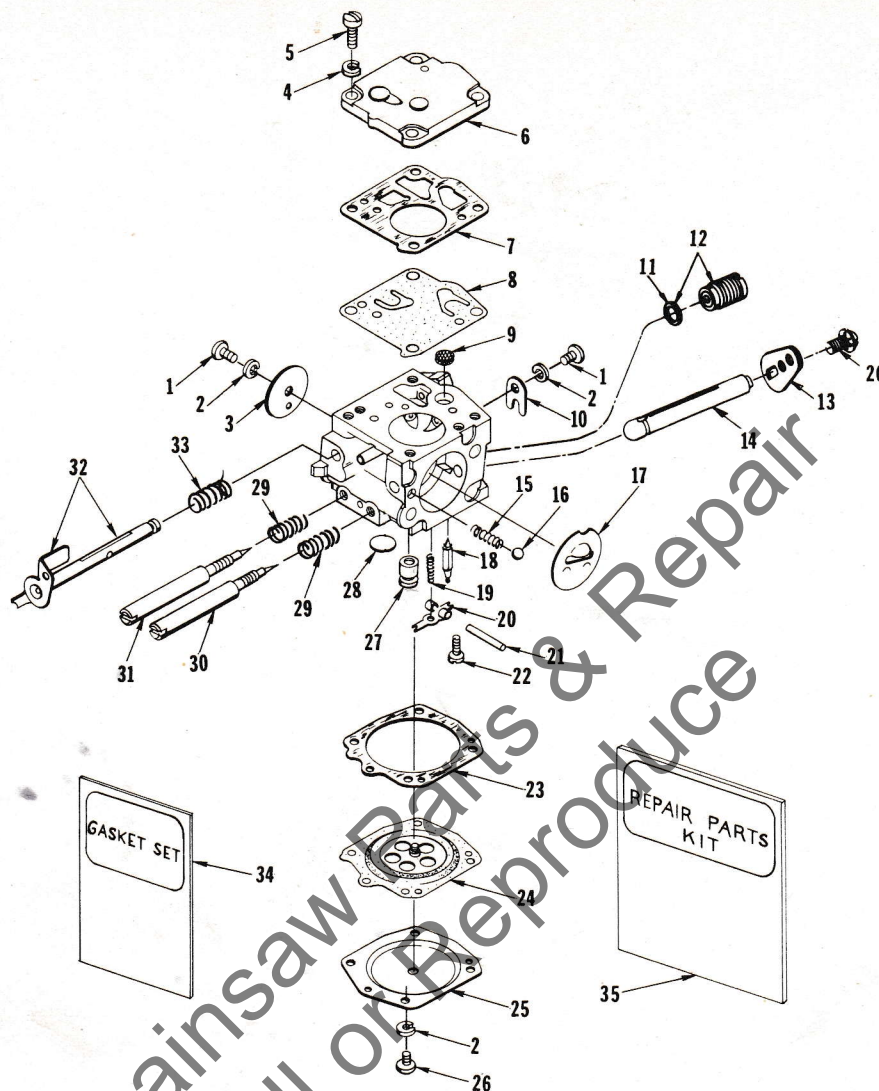
\* Denotes new parts

† Optional

NOTE 1-When using optional Sprocket and Drums, you must use one #58926 Thrust Washer (outer).

NOTE 2-When using optional Sprocket and Drums, you must use one #63463 Thrust Washer (inner).

# XL-921 XL-923 XL-924



HS-92B

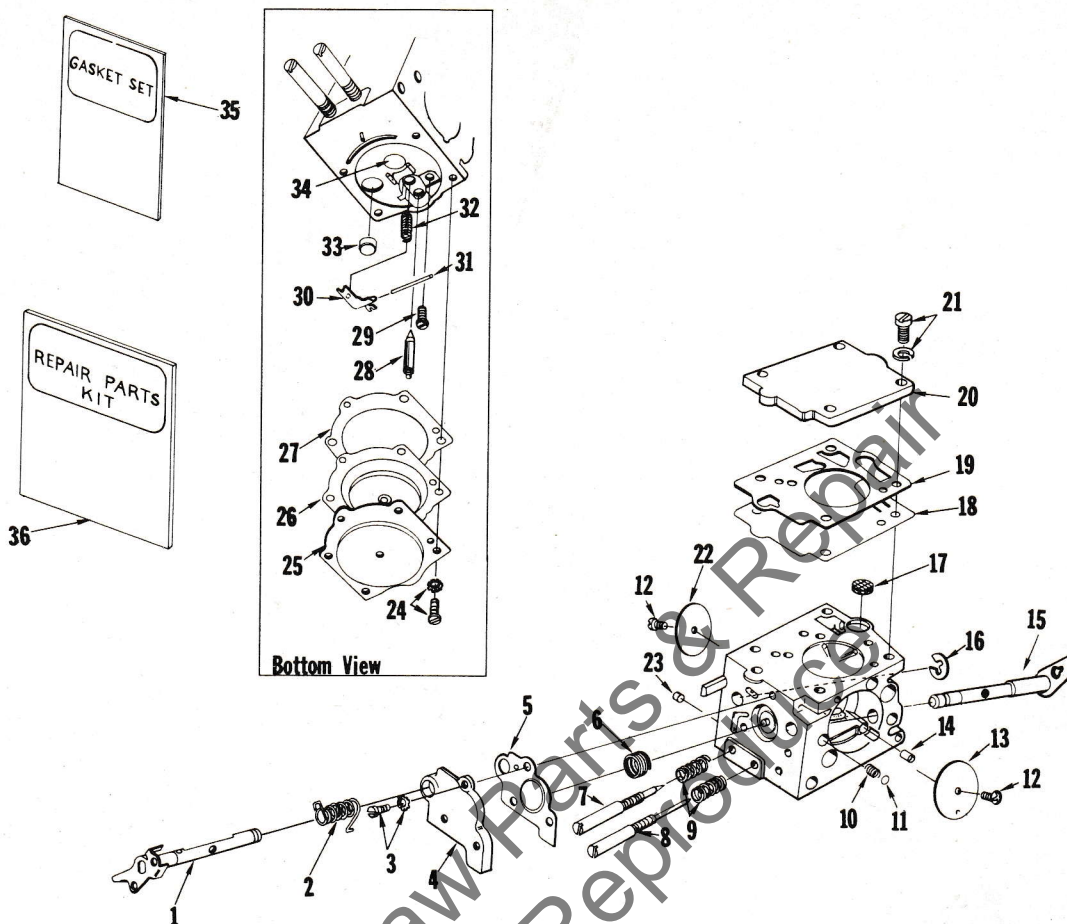
No.	Description	Part No.	Qty.
1	SCREW-rd., 4-40 x 3/16	†80264	2
2	WASHER-lock, #4	†83008-1	6
* 3	SHUTTER-throttle	67994	1
4	WASHER-lock, #6	83024	4
5	SCREW-fil, 6-32 x 3/8	80275	4
6	COVER-fuel pump diaphragm	58975	1
7	GASKET-pump diaphragm	58981	1
8	DIAPHRAGM-fuel pump	†58980-R	1
9	SCREEN-fuel inlet	†58974	1
10	CLIP-throttle shaft retaining	58982	1
11	GASKET	74060	1
12	VALVE-governor	A-65801	1
*13	LEVER-choke	68397	1
14	SHAFT-choke	65799	1
15	SPRING-choke friction	73264	1
16	BALL-choke friction	25527	2
17	SHUTTER-choke	58984	1

No.	Description	Part No.	Qty.
18	NEEDLE-inlet	†59717	1
19	SPRING-control lever	†55759	1
20	LEVER-inlet control	†59716	1
21	PIN-control lever fulcrum	†58977	1
22	SCREW-oval, 4-40 x 1/4	†65798	1
23	GASKET-main diaphragm	58978	1
24	DIAPHRAGM-main control	†58988	1
25	COVER-main diaphragm	58979	1
26	SCREW-rd., 4-40 x 1/4	80591	5
*27	VALVE-check	54444	1
28	PLUG-extension (large)	†58991	1
29	SPRING-adjustment needle	†73075	2
30	SCREW-main adjustment	†63676	1
31	SCREW-idle adjustment	†63677	1
*32	SHAFT-throttle w/lever	A-67995	1
33	SPRING-throttle opening	†59460	1
34	GASKET-set	†65895	1
35	REPAIR KIT	65896	1

\* Denotes new parts

† Included in Repair Kit

# XL-921 XL-923 XL-924



SDC-27

No.	Description	Part No.	Qty.	No.	Description	Part No.	Qty.
1	SHAFT-throttle	64225	1	19	GASKET-fuel pump	†67008	1
* 2	SPRING-throttle return	††67929	1	20	COVER-fuel pump	64223	1
3	SCREW-accelerator pump	67930	3	21	SCREW-fuel pump cover	64694	4
4	COVER-accelerator pump	64222	1	22	VALVE-throttle	64226	1
5	DIAPHRAGM-accelerator pump cover	††67188	1	23	PLUG-limiting	64692	1
6	SPRING-accelerator pump	††64240	1	24	SCREW ASSEMBLY	64689	4
7	NEEDLE-idle	††67009	1	25	COVER-metering diaphragm	64224	1
8	NEEDLE-high speed	††67010	1	26	METERING DIAPHRAGM ASSEMBLY	††64235	1
9	SPRING-needle adjusting	††64236	2	27	GASKET-metering diaphragm	†64231	1
10	SPRING-choke friction	64238	1	28	VALVE-inlet needle	††64229	1
11	BALL-choke friction	60051	1	29	SCREW-metering lever pin	††64688	1
12	SCREW-valve	††64693	2	30	LEVER-metering	††64245	1
13	VALVE-choke	64228	1	31	PIN-metering lever	††64244	1
14	JET-idle air	64690	1	*32	SPRING-metering lever	††67928	1
15	SHAFT-choke	67109	1	33	PLUG-welch (idle) 3/8"	††30818	1
16	RING-throttle shaft retaining	64221	1	34	PLUG-welch (main) 5/16"	††65482	1
17	SCREEN-fuel inlet	††64243	1	35	GASKET SET	††67019	1
18	DIAPHRAGM-fuel pump	††64233	1	*36	REPAIR KIT	67965	1
				*	REPAIR KIT-check valve	67966	1

† Included in Gasket Set

†† Included in #67965 Repair Kit

\* Denotes new parts

# XL-921 XL-923 XL-924

## Tools

		XL-921	XL-923	XL-924
A-23937-B	WRENCH-combination	x	x	x
23528	WRENCH-socket screw (conn. rod)	x	x	x
A-23965	JACKSCREW		x	x
23136-2	SLEEVE-bearing and shaft installation	x		
22820-4	COLLAR-bearing installation		x	x
23846-1	ANVIL-crankshaft installation	x	x	x
23971	SLEEVE-seal protecting (crankcase)		x	x
23972	SLEEVE-seal installation (crankcase)	x	x	x
23957	PLUG-seal installation (crankcase)	x	x	x
23987	SHIM-magneto air gap	x	x	
24006-1	PLATE-shaft aligning	x	x	x
23968	ANVIL-bearing installation (backplate)		x	
A-23960	PULLER-rotor	x	x	x
23956	PLUG-bearing and seal installation (backplate)	x	x	x
A-23962	JACKSCREW-bearing remover (backplate)	x	x	x
23846-2	ANVIL-bearing remover (backplate)	x	x	x
A-23696-A	WRENCH-spanner		x	x
24230	DRIVER-hand pozidriv	x	x	x
24304	BIT-pozidriv #2	x	x	x
23955	PLUG-bearing installation (conn. rod)	x	x	x
A-23137	JACKSCREW ASSEMBLY	x		
22820-3	COLLAR-bearing assembling	x		
23759	SLEEVE-seal assembling (crankcase)	x		
A-23934	WRENCH-spanner (clutch)	x		
23136-1	SLEEVE-bearing and shaft installation		x	x
24302	PLUG-seal installation (backplate)			x
24306	SHIM-(black) air gap			x
23420	PLUG-bearing installation		x	x

## Accessories

A-63540-A	SPARK ARRESTER
A-24266	KIT-starting rope
A-24270	KIT-filter
A-24274	KIT-ignition (XL-921, XL 923)
*A-24413	KIT-guide bar plate
A-24279	KIT-fastening parts

## Paint

23475	SPRAY CAN-red
22772	SPRAY CAN-black
24101	SPRAY CAN-blue

\* Denotes new parts



# XL-921 XL-923 XL-924

Part No.	Description	Qty.	Part No.	Description	Qty.	Part No.	Description	Qty.	Part No.	Description	Qty.
OM-10513	Sprocket	1	59000	Line	2	64400	Bushing	1	*67168	Crankshaft	1
22772	Spray Can-black	1	A-59031	Lead	1	A-64421	Screen	1	*67168-1	Crankshaft	1
22820-3	Collar	1	59064	Bushing	1	64443	Bushing	1	67177	Bushing	1
22820-4	Collar	1	59074	"O" Ring	1	A-64446	Pulley	1	67188	Diaphragm	1
23136-1	Sleeve	1	A-59251	Filter	1	A-64504-B	Housing	1	67191	Stud	11
23136-2	Sleeve	1	59253-1	Filter	1	64569	Shoe	3	67201-1	Rod	1
A-23137	Jackscrew	1	59293	Spring	1	A-64621	Bearing	1	*67321	Washer	1
23420	Plug	1	59351	Bearing	1	64688	Screw	1	67409	Ring	1
23475	Spray Can- red	1	59460	Spring	1	64689	Screw Assembly	4	67441	Spring	2
23528	Wrench	1	59675	Worm	1	64690	Jet	1	*67455-1	Cylinder	1
A-23696-A	Wrench	1	59704	Screw	2	64692	Plug	1	*67458-1	Cylinder	1
23759	Sleeve	1	59705	Washer	2	64693	Screw	2	*A-67460-1	Manifold	1
23846-1	Anvil	1	59716	Lever	1	64694	Screw	4	67540	Gasket	1
23846-2	Anvil	1	59717	Needle	1	A-64715	Shield	1	67559	"O" Ring	1
A-23934	Wrench	1	59736	Gasket	1	64742	Ring	2	67586-1	Pin	1
A-23937-B	Wrench	1	59926	Seal	1	64862	Grommet	1	A-67618	Plate	1
23955	Plug	1	60051	Ball	1	64867-1	Guard	1	*A-67639	Nut	1
23956	Plug	1	63051	Cover	1	65133	"O" Ring	1	67875-1	Washer	1
23957	Plug	1	63053-1	Plate	1	A-65283	Cap	1	*A-67880	Carburetor	1
A-23960	Puller	1	63115	Cap	1	A-65284	Cap	1	*A-67887-A	Carburetor	1
A-23962	Jackscrew	1	63166-A	Valve	4	65357	Grommet	1	67896-1	Shoe	6
A-23965	Jackscrew	1	63195	Bearing	1	65482	Plug	1	*67928	Spring	1
23968	Anvil	1	63266-A	Rod	1	65483	Gasket	1	*67929	Spring	1
23971	Sleeve	1	63268-A	Spring	1	A-65502	Valve	1	67930	Screw	3
23972	Sleeve	1	A-63309-1	Rod	1	65509	Mount	1	*67955	Repair Kit	1
23987	Shim	1	63316	Gasket	1	65513-1	Clamp	1	*67966	Repair Kit	1
24006-1	Plate	1	63317	Cover	1	A-65515	Valve	1	*A-67989	Piston & Pin	1
24101	Spray Can-blue	1	A-63337	Rod	1	65518	Grommet	2	*67994	Shutter	1
24230	Driver	1	63341	Filter Element	1	65519	Grommet	2	*A-67995	Shaft	1
A-24266	Kit-starter rope	1	63343-5	Body	1	65520	Screw	2	*A-68008	Rod	1
A-24270	Kit-filter	1	63367	Screw	1	65521	Screw	2	*68010	Washer	2
A-24274	Kit-ignition	1	63369	Screw	1	65542	Spacer	1	*A-68023	Crankcase	1
A-24279	Kit-fastening parts	1	63370-A	Retainer	1	65593	Line	1	*A-68025	Handle	1
24302	Plug	1	63371-B	Seat	1	65597-1	Clamp	1	*A-68026	Valve	1
24304	Bit	1	63406	Rotor	1	65598	Plate	1	*A-68027	Plate	1
24306	Shim	1	63452-A	Tube	1	65599	Plate	1	*A-68033	Piston & Pin	1
*A-24413	Kit-guide bar plate	1	63462	Washer	2	65607-2	Bracket	1	OM68210	Sprocket	1
25038	Gasket	1	63520-3	Cap	1	65607-3	Bracket	1	*68397	Lever	1
25527	Ball	2	63521-A	Baffle	1	65629-1	Plate	1	72085-A	Plate	1
28008	Clip	1	A-63535-1A	Body	1	65630	Lever	1	73075	Spring	2
28028	Washer	1	A-63540-A	Spark Arrestor	1	65660-1	Clamp	1	73264	Spring	1
28097	Plug	1	63547-S	Spark Plug	1	A-65682	Line	1	74060	Gasket	1
30818	Plug	1	63565-A	Shield (outer)	1	65695	Connector	1	74388	"O" Ring	1
31734	Connector	1	63566	Shield (inner)	1	65696	Fitting	1	75078	Key	1
A-33055	Terminal	1	63605	Line	1	A-65705	Line	1	76413	Spring	1
*54444	Valve	1	63621	Pin	2	65714	Spring	1	76421	Screw	1
55038	Piston Ring	2	63622	Button	1	65718	Line	2	FASTENING PARTS		
55411	Screw	3	63625	Coil	1	65719	Pin	1	80023-2	8-32 x 5/8	1
55537	Piston Ring	2	63626	Condenser	1	65723-2	Spider	1	80048-1	1/4-20 x 5/8	4
55759	Spring	1	63627	Clamp	1	65745	Trigger	1	80248	8-32 x 3/4	3
55871	Stud	4	63628	Retainer	1	65746	Race	1	80264	4-40 x 3/8	2
57289-1	Button	1	63630	Core	1	65798	Screw	1	80275	6-32 x 3/4	4
A-57650-3	Switch	1	A-63631	Points	1	65799	Shaft	1	80361-1	10-32 x 1/2	2
A-57834-16	Plunger	1	63632	Lead	1	A-65801	Valve	1	80428	1/4-20 x 1	1
58138	Washer	1	63634-1	Cover	1	A-65814-2	Handle Bar	1	80560	8-32 x 1/2	2
58190-S	Bearing	1	63676	Screw	1	65821-1	Clamp	1	80568	8-32 x 7/8	2
58319-A	Ring	2	63677	Screw	1	65822	Pin	1	80571	6-32 x 3/8	10
58338	Gasket	1	63718	Valve	1	65830	Bushing	1	80591	4-40 x 1/4	4
58339	Cap	1	A-63720	Kit-Bumper	1	65842	Spring	3	80605	6-32 x 5/16	1
58348	Boot	1	63726	Clip	1	A-65860-1	Handle Bar	1	80648	10-32 x 1/2	1
58362	Grommet	1	63751	Gasket	1	65878	Bushing	1	80676	12-24 x 5/8	4
58392-1	Gasket	1	63778-1	Gasket	1	A-65882-A	Cover	1	80805	8-32 x 9/16	2
58405	Spring	1	63779-B	Gasket	1	A-65884	Sprocket & Drum	1	80821	12-24 x 1/2	1
58406	"O" Ring	1	63855-A	Screw	3	A-65885	Sprocket & Drum	1	80867	12-24 x 3/4	2
58409	Ring	1	64002	Cap	1	A-65886	Sprocket & Drum	1	80891	12-24 x 7/8	1
58648-A	Seal	1	64021	Screw	4	A-65887	Sprocket & Drum	1	80919	4-40 x 1/4	2
58751-1	Cover	1	64049-A	Lock	1	65889	Plug	2	80978	12-24 x 5/8	3
58756	Pawl	2	64090	Screw	1	A-65894	Kit-handle bar	1	81065-2	Nut-1/4-28	4
58757-B	Stud	2	64102-A	Screw	1	65895	Gasket Set	1	81068	Nut-12-24	2
58758	Spring	2	64124	Bearing	1	65896	Repair Kit	1	81089-2	Nut-3/8-16	2
58763	Washer	1	64129	Race	1	A-65989	Drum & Hub	1	81108	Nut-1/4-20	1
58806	Rope	1	64144	Decal	1	A-65990	Drum & Hub	1	81124	Nut-3/8-24	1
58833	Washer	2	64221	Ring	1	67008	Gasket	1	81126	Nut-6-32	10
58847	Insert	1	64222	Cover	1	67009	Needle	1	81192	Nut-3/8-24	1
58851	Washer	2	64223	Cover	1	67010	Needle	1	82146	8-32 x 5/8	6
58858	Grommet	1	64224	Cover	1	67019	Gasket Set	1	82147	8-32 x 1-3/4	1
58915	Grip	1	64225	Shaft	1	67080	Connector	1	82155	8-32 x 2-3/16	8
58924	Pin	1	64226	Valve	1	A-67101	Deflector	1	82173	8-32 x 1	1
A-58934	Block	1	64228	Valve	1	67109	Shaft	1	82178	8-32 x 3/4	7
58957	Gasket	1	64229	Valve	1	67153-2	Cover	1	82179	10-32 x 1-7/8	2
58974	Screen	1	64231	Gasket	1	*67156-3	Cover	1	*82196	8-32 x 1-1/8	2
58975	Cover	1	64233	Diaphragm	1	*67158	Bolt	2	83008-1	Washer-#4	6
58977	Pin	1	64235	Diaphragm	1	*67169	Gasket	1	83009	Washer-1/4	4
58978	Gasket	1	64236	Spring	2	*67160	Plate	1	83022	Washer-#8	7
58979	Cover	1	64238	Spring	1	*67161	Plate	1	83024	Washer-#6	4
58980-R	Diaphragm	1	64240	Spring	1	67162	Module	1	83046	Washer-#10	2
58981	Gasket	1	64243	Screen	1	67163	Coil	1	83056	Washer-#12	2
58982	Clip	1	64244	Pin	1	67164	Coil	1	83102	Washer-3/8	1
58984	Shutter	1	64245	Lever	1	67165	Rotor	1	84010-1	Washer-3/8	2
58988	Diaphragm	1	A-64293	Filter	3	67166	Lead	1	84010-1	Washer-3/8	1
58991	Plug	1	A-64384	Pump	1	67167	Lead	1	86324	Pin-cotter	1
									*86329	Pin-cotter	1

\* Denotes new parts

Leon's Chainsaw Parts & Repair  
Do Not Sell or Reproduce

**HOMELITE®**

A **Textron**  
DIVISION

PORT CHESTER, N.Y. U.S.A.