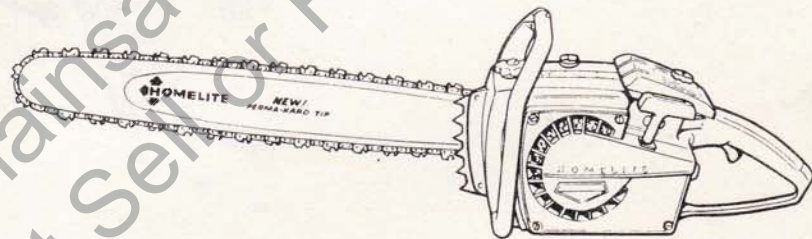


PRICE 25

# PARTS LIST



# HOMELITE®



# XL

CHAIN SAWS

Leon's Chainsaw Parts & Repair  
Do Not Sell or Reproduce

# HOMELITE XL-910 AO

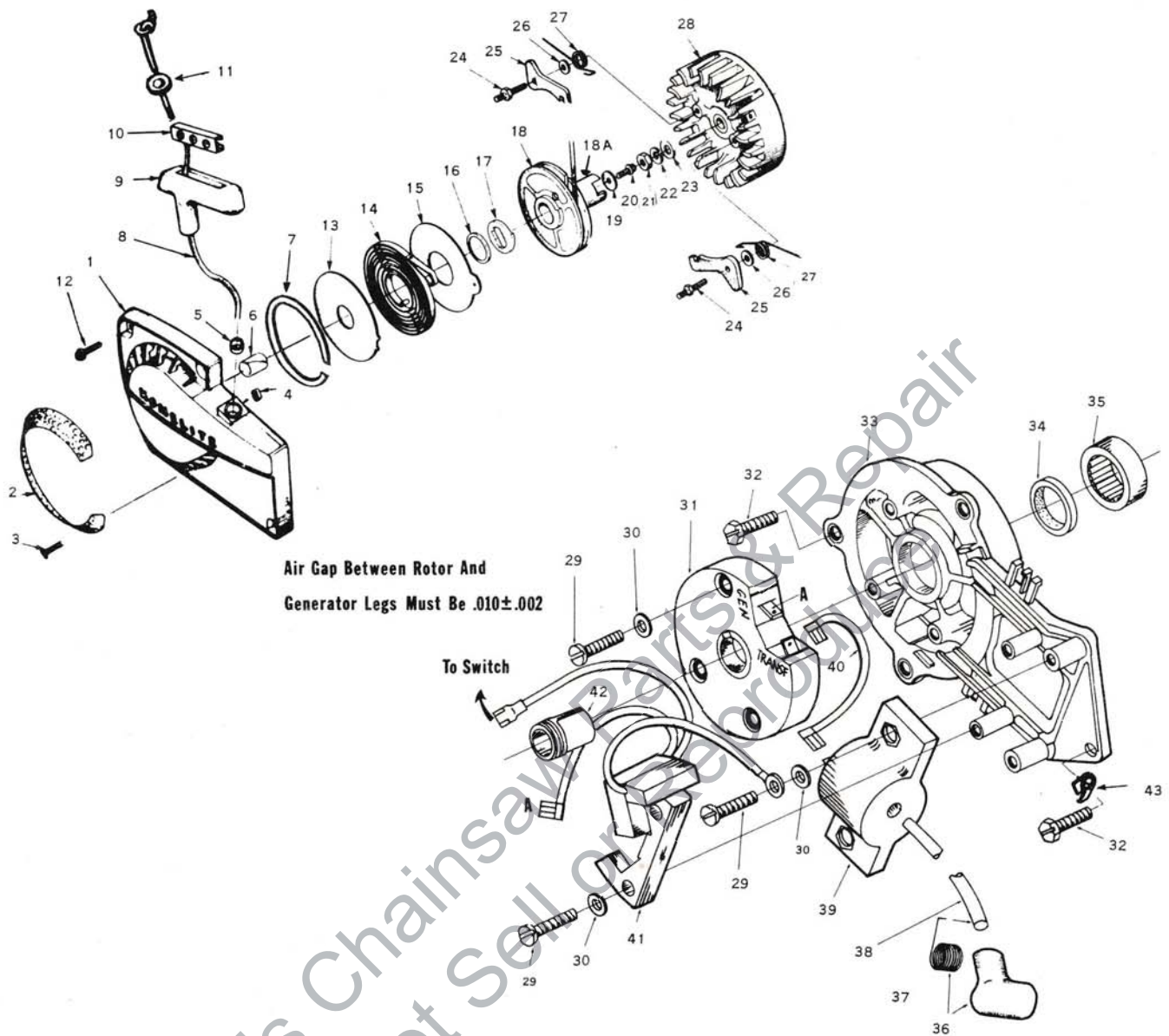


FIGURE 1

No.	Description	Part No.	Qty.	No.	Description	Part No.	Qty.
1	HOUSING fan	A-64504-B	1	22	WASHER lock 3/8	83102	1
2	INCLUDES, screen-air	64420-1	1	23	WASHER flat 3/8	84010	1
3	Studes Drive 2 x 1/4	67191	11	24	STUD-shoulder - pawl	58757-B	2
4	Bushing, Rewind	65830	1	25	PAWL- starter	58756	2
5	Bushing - rope	59313	1	26	WASHER	58851	2
6	Bushing-starter post	64443	1	27	SPRING-pawl	58758	2
7	Ring air flow	67409	1	28	ROTOR magneto	67165	1
8	ROPE starter	58806-T	1	29	SCREW pan head 8-32 x 3/4	82178	7
9	GRIP-rope	58915	1	30	WASHER lock ( no. 8)	83022	7
10	INSERT	58847	1	31	MODULE ignition	67162	1
11	WASHER	120773	1	32	SCREW hex head 1/4 - 20 x 5/8	80048-1	4
12	SCREW-hex head 12 - 24 x 5/8	80676	4	33	BACK plat	A-67604-T	1
13	SHIELD (inner)	63566	1	34	INCLUDES; seal	58688-A	1
14	SPRING - rewind	63268-A	1	35	Bearing rollers	63195	1
15	SHIELD - (outer)	63565-A	1	36	COVER sparky	33052	1
16	BUSHING spring lock	64400-A	1	37	SPRING	33051	1
17	LOCK spring	64049-A	1	38	LEAD-high tension	67166	1
18	PULLEY starter	64398-1A	1	39	COIL - trans former	67164	1
18A	CUP starter	64399	1	40	LEAD transformer	67167	1
19	WASHER retaining	58763	1	41	CORE & Generator Coil	67163	1
20	SCREW-hex hd 10 -32 x 1/2	80648	1	42	CAP dust	64002	1
21	NUT hex jam (3/8 - 24)	81124	1	43	WASHER,tab	121297	1



# HOMELITE XL-910 AO

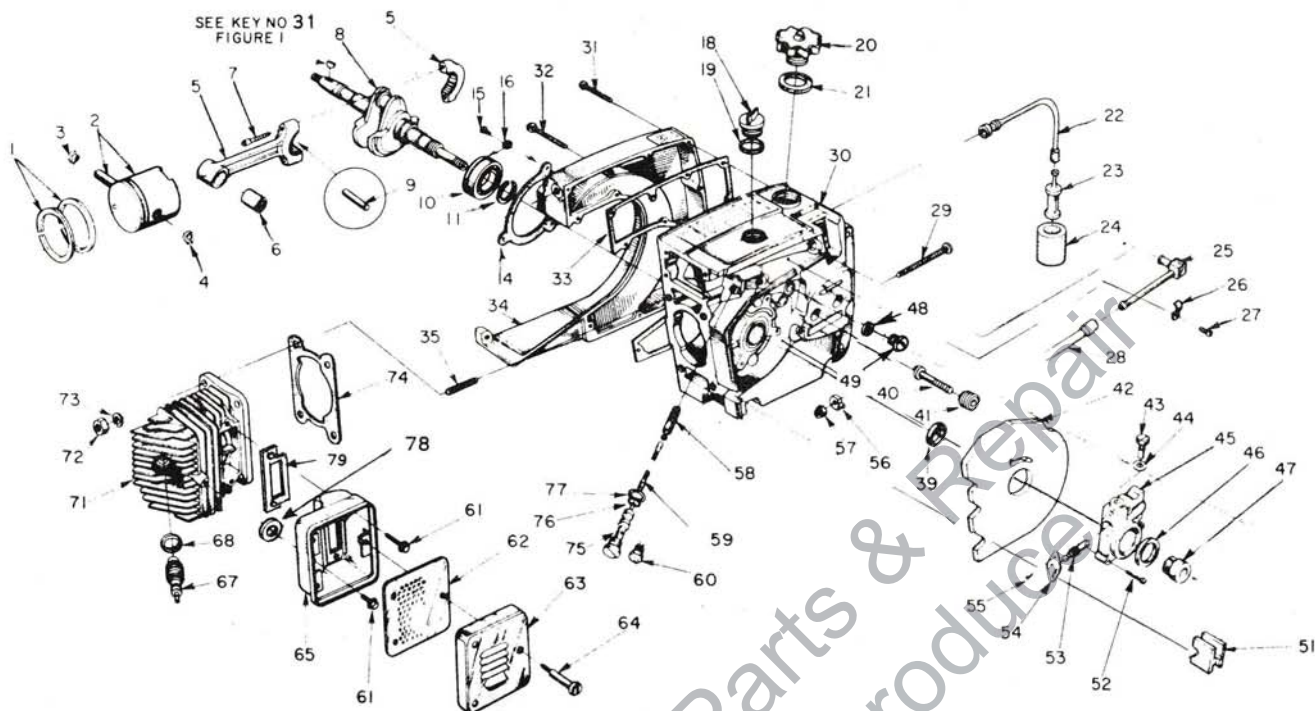


FIGURE 2

No.	Description	Part No.	Qty.	No.	Description	Part No.	Qty.
1	RING - piston (2" bore)	55038	2	35	STUD	55871	4
2	PISTON & PIN - 2" bore	A-63780-T	1	39	SEAL	58688-A	1
3	Includes: RING - retaining	55095	1	40	STUD - guide bar	59764-A	2
4	RING - retaining	120105	1	41	INSERT - threaded	59896-A	2
5	ROD - connecting	A-63309-1	1	42	SHIELD - saw dust	64156	1
6	Includes: BEARING - needle	59351	1	43	SCREW - cam	64102-A	1
7	SCREW - socket cap. 8-32 x 9/16	80805	2	44	GASKET	59736	1
8	CRANKSHAFT	59625-2	1	45	HOUSING - automatic oiler	A-63461-B	1
9	BEARING - needle (28 rollers)	A-64621	1	46	SEAL - felt	59926	1
10	BEARING - ball	58190	1	47	GEAR - worm	59675	1
11	RING - retaining	58319-A	1	48	GASKET	58338	1
14	GASKET - sealing	63319-AT	1	49	CAP	58339	1
15	SCREW - bearing retaining	59704	2	* 51	GROMMET - oil line	65357	1
16	WASHER - lock	59705	2	52	SCREW - fil., 8-32 x 3/4	80248	3
18	CAP - oil (vented)	120874	1	53	PLUNGER - gear	64136	1
19	Includes: GASKET	56607	1	54	BEARING - flanged	59719	1
	VALVE - vent (not shown)	63718	1	55	SCREW - pan, 4-40 x 1/4	80919	2
* 20	CAP - fuel	120873	1	56	PIN - guide bar adjusting	67586-1	1
21	Includes: GASKET	58957	1	57	NUT - lock, 1/4-20	81108	1
* 22	LINE - flexible fuel	65593	1	58	FILTER - oil	A-64293	1
23	FILTER - fuel	A-59251	1	59	LINE - oil pickup	64356	1
24	Includes: FILTER	59253	1	60	PLUG Pipe (1/8 NPT)	28097	1
25	LINE - fuel	67080	1	61	SCREW - hex, 12-24 x 5/8	80978	3
26	CLAMP - fuel line	65597-1	1	62	BAFFLE - muffler	65633	1
27	SCREW - pan, 6-32 x 5/16	80605	1	63	CAP - muffler	63520-3	1
28	LINE - fuel	65718	1	64	SCREW - shoulder	63855-A	3
29	SCREW - guide bar adjusting	63367	1	65	BODY - muffler	A-63535-1A	1
30	CRANKCASE & TANK	A-65879-BT	1	67	SPARK PLUG (Champion CJ-6)	63547	1
	Includes:				Includes: GASKET	25038	1
31	SCREW - fil. hd. 8-32 x 5/8	82146	6	71	CYLINDER - 2" bore	63012-2AT	1
32	SCREW - fil. hd. 8-32 x 1-3/4	82147	9	72	NUT - hex, 1/4 x 28	81065-2	4
33	GASKET - fuel tank	65391	1	73	WASHER - lock, 1/4	83009	4
* 34	COVER - fuel tank	64825-4T	1	74	GASKET - cylinder	63778-1	1
				75	TUBE - oil line	63452-A	1
				76	"O" RING	58406	1
				77	GASKET - oil line tube	63751	1
				78	GASKET - muffler (not shown)	120910	1
				79	GASKET - muffler (not shown)	84008	1

ALWAYS FURNISH MODEL AND SERIAL NUMBER WHEN ORDERING PARTS.

# HOMELITE XL-910 AO

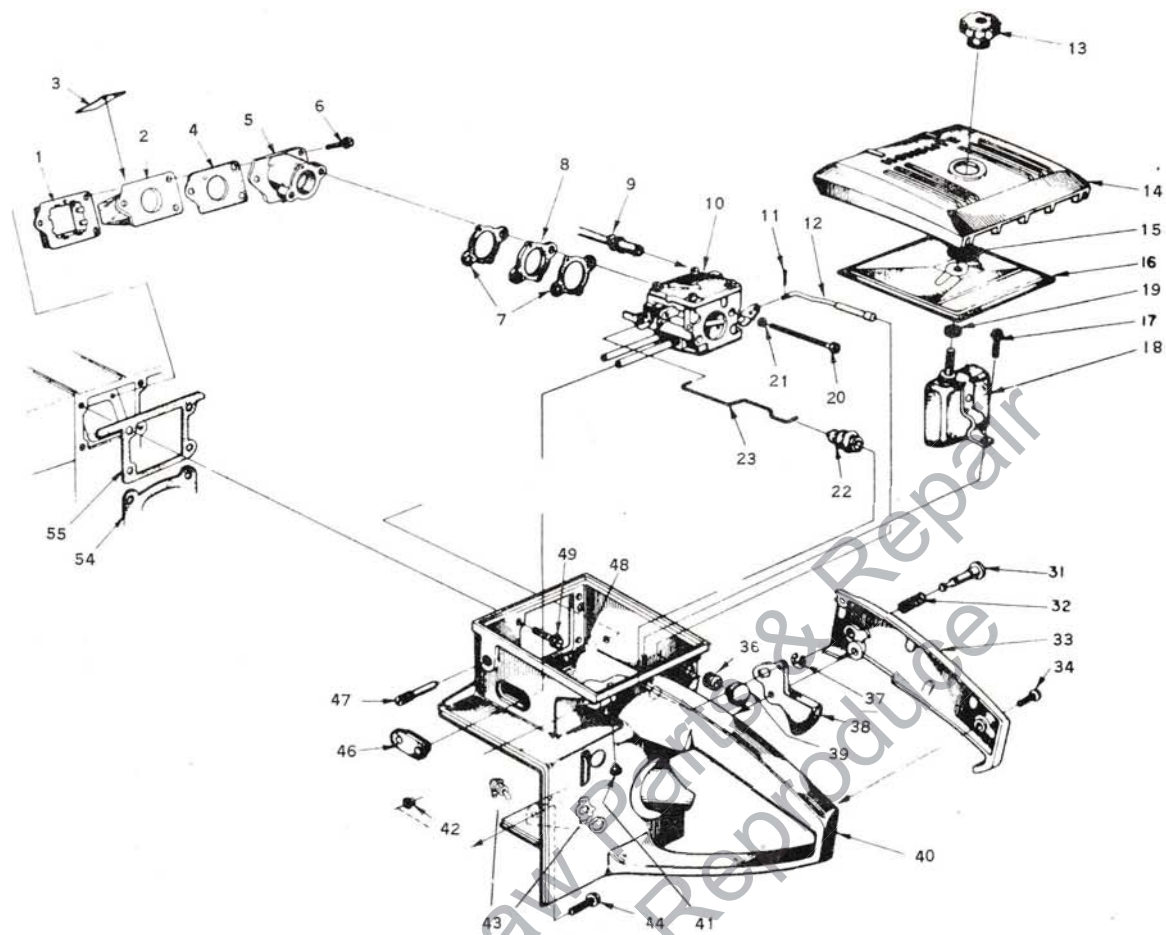


FIGURE 3

No.	Description	Part No.	Qty.	No.	Description	Part No.	Qty.
1	RETAINER - reed valve	63370	1	31	PIN - throttle lock	58924	1
2	SEAT - reed valve	63371-A	1	32	SPRING - lock	58405	1
3	VALVE - reed	63166-A	4	33	COVER - throttle handle	A-63325-2A	1
4	GASKET - reed valve seat	65483	1		Includes: BUSHING - pin	59064	1
5	SPACER - reed valve	63019-1A	1	34	SCREW - pan, 8-32 x 1/2	80560	2
6	SCREW - shoulder	65489	3	36	GROMMET	58362	1
7	GASKET - carburetor	63254	2	37	RING - retaining	58409	1
8	SPACER - carburetor	63256	1	38	THROTTLE - trigger	58859	1
9	LINE - fuel	65718	1	39	BUTTON	57289-1	1
10	CARBURETOR See Note 1	A-65578	1	40	HANDLE - throttle	A-63683-CT	1
11	PIN - cotter	86324	1	41	Includes: BUMPER - rubber	56298	1
12	ROD - choke	120860	1	42	PLUG oiler shaft	63848	2
13	NUT - cover mounting	A-63582-A	1	43	PLUG oiler pump hole	63847	2
14	COVER - air filter	63634-3	1	43A	SWITCH grounding	A57650-3	1
15	RING - retainer	58319-A	1		includes Nut-hex	72084-A1	1
16	FILTER ELEMENT - air	63341	1	44	SCREW - hex, 12-24 x 7/8	80891	1
17	SCREW - hex, 12-24 x 1/2	80821	1	44A	PLATE indicating "on - off"	72085-A	1
18	DEFLECTOR - air, w/bracket	A-67101	1	46	GROMMET LO&HI	64664	1
19	Includes: GASKET-mounting nut	58392-1	1	47	SCREW - idle adjustment	63369	1
20	SCREW - hex, 10-32 x 2	80965	2	49	SCREW - hex, 12-24 x 5/8	80676	4
21	WASHER - lock, #10	83046	2	*54	GASKET - cylinder	63778-1	1
22	BOOT - throttle rod	58348	1	*55	GASKET - throttle handle	63779-B	1
23	ROD - throttle	63266-A	1				

Note 1 - See Carb. Parts List 24224.



# HOMELITE XL-910 AO

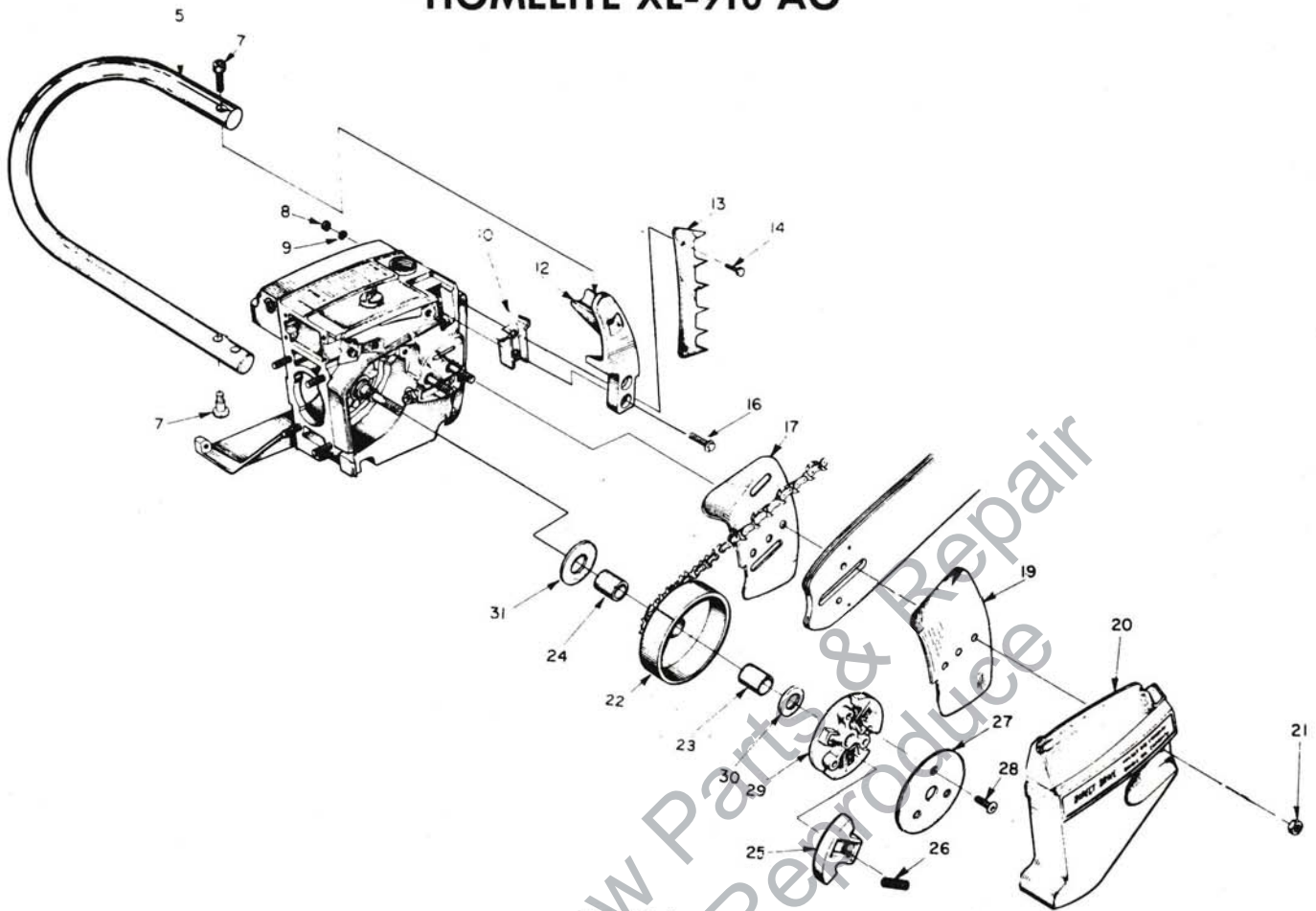


FIGURE 4

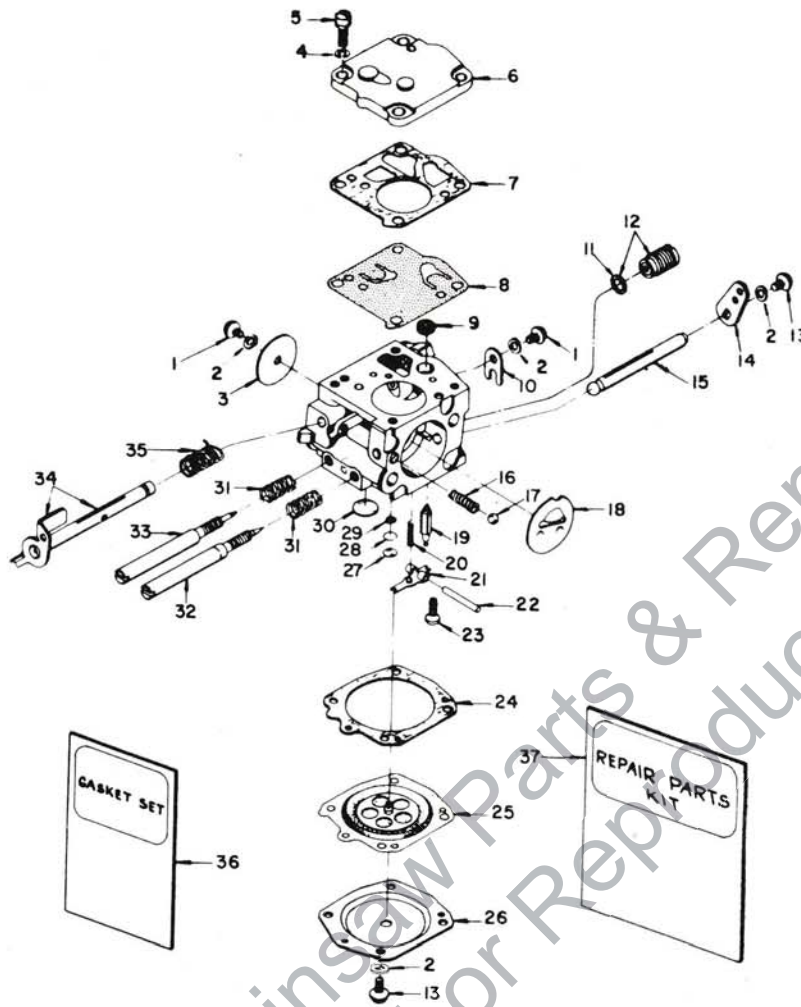
No.	Description	Part No.	Qty.	No.	Description	Part No.	Qty.
5	HANDLE BAR - flush cut	121483-1	1	19	PLATE - guide bar (outer)	58782-T	1
	HANDLE BAR Wrap around	A65814-3T	1	20	COVER - drivecase	63009-2	1
7	SCREW - soc, 1/4-20 x 1	80428	3	21	NUT - 5/16-18	81196	2
8	NUT - 12-24	81068	2	22	SPROCKET & DRUM 3/8" pitch, 8 tooth	A65885-T	1
9	WASHER - lock, #12	83056	2	23	Includes: BEARING NEEDLE	64124	1
10	BRACKET	120852-3	1	24	RACE - inner	64129	1
12	BRACKET - handle bar (flush cut)	63011-7	1	25	SHOE - clutch	64569	3
	Bracket Handle Bar (Wrap around)	63011-5	1	26	SPRING - clutch	65842	3
13	BUMPER - spiked (optional)	63549	1	27	COVER - clutch	63051-1	1
14	SCREW - hex, 12-24 x 3/4	80867	2	28	SCREW - hex, 1/4-20 x 1/2	64471	3
16	SCREW - hex, 12-24 x 3/4	80867	2	29	PLATE - clutch	63053-2	1
17	PLATE - guide bar (inner)	58781-T	1	30	WASHER - thrust (outer)	63462	1
				31	WASHER - thrust (inner)	63463	1

## SPECIAL TOOLS (available on order)

Part No.	Description	Part No.	Description
A-23937-A	COMBINATION WRENCH	A-23934	WRENCH
22828	PLIERS - piston snap ring	A-23841	WRENCH - insert (guide bar stud)
23528	WRENCH - socket screw (conn. rod)	A-23960	PULLER - rotor
23955	PLUG - bearing installation (conn. rod)	23819	PLUG - needle bearing (sprocket)
A-23137	JACKSCREW	23420	PLUG - bearing installation (sprocket)
A-23965	JACKSCREW	24302	PLUG - bearing and seal installation (back plate)
23136	BODY - jackscrew	A-23962	REMOVER - bearing (back plate)
23136-1	BODY - jackscrew	23846-2	ANVIL - bearing disassembling (back plate)
22820-3	COLLAR - bearing	A-23951	PLUG - piston pin removal
23846-1	ANVIL - crankshaft installation	24006-1	PLATE - crankshaft aligning
23759	SLEEVE - seal protecting (crankcase)		
23971	SLEEVE - seal protecting (crankcase)		PAIN
23972	SLEEVE - seal installation (crankcase)	23343	SPRAY CAN - green
23957	PLUG - seal installation (crankcase)	22771	SPRAY CAN - red
24306	SHIM - point gap	23560	SPRAY CAN - white

ALWAYS FURNISH MODEL AND SERIAL NUMBER WHEN ORDERING PARTS.

# HOMELITE XL-910 AO



Assembly Number  
A-65578

TILLOTSON MODEL HS-56A

No.	Part No.	Description	Qty.	No.	Part No.	Description	Qty.
1	80264	†SCREW - rd. hd., 4-40 x 3/16	2	19	59717	†NEEDLE - inlet	1
2	83008-1	†WASHER - lock, #4	4	20	55759	†SPRING - control lever	1
3	25050	SHUTTER - throttle	1	21	59716	†LEVER - inlet control	1
4	83024	WASHER - lock, #6	1	22	58977	†PIN - control lever fulcrum	1
5	80275	SCREW - fil. hd., 6-32 x 3/8	4	*23	65798	†SCREW - oval hd., 4-40 x 1/4	1
6	58975	COVER - fuel pump diaphragm	1	24	58978	GASKET - main diaphragm	1
7	58981	GASKET - pump diaphragm	1	25	58988	†DIAPHRAGM - main control	1
8	58980-R	†DIAPHRAGM - fuel pump	1	26	58979	COVER - main diaphragm	1
9	58974	†SCREEN - fuel inlet	1	27	58994	†PLUG - extension (small)	1
10	58982	CLIP - throttle shaft retaining	1	28	57819	RING - retaining	1
11	74060	GASKET	1	29	59500	SCREEN - channel	1
*12	A-65801	VALVE - governor	1	30	58991	†PLUG - extension (large)	1
13	80591	SCREW - rd. hd., 4-40 x 1/4	5	31	73075	†SPRING - adjustment needle	2
*14	65800	LEVER - choke	1	32	63676	†SCREW - main adjustment	1
*15	65799	SHAFT - choke	1	33	63677	†SCREW - idle adjustment	1
16	73264	SPRING - choke friction	1	34	A-63345	SHAFT - throttle w/lever	1
17	25527	BALL - check	2	35	59460	†SPRING - throttle opening	1
18	58984	SHUTTER - choke	1	*36	65895	†GASKET SET	1
				*37	65896	REPAIR KIT	1

† Indicates contents of Repair Kit.

\* Denotes new parts.

ALWAYS FURNISH MODEL AND SERIAL NUMBER WHEN ORDERING PARTS.

PART NO. 121484



# TERRY INDUSTRIES

A DIVISION OF **textron** CANADA LIMITED

180 Labrosse Ave., Pointe Claire, Que.

