

PRICE.25

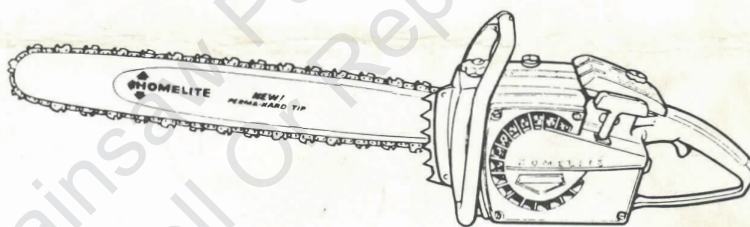
PS 27-

PS 28

# PARTS LIST

# XL 903E & EAM

# HOMELITE®



Leon's Chainsaw Parts & Repair  
Do Not Sell Or Reproduce

# XL

## CHAIN SAWS

PART NO. 24245  
Printed in U.S.A.

968

# HOMELITE XL-903E & EAM

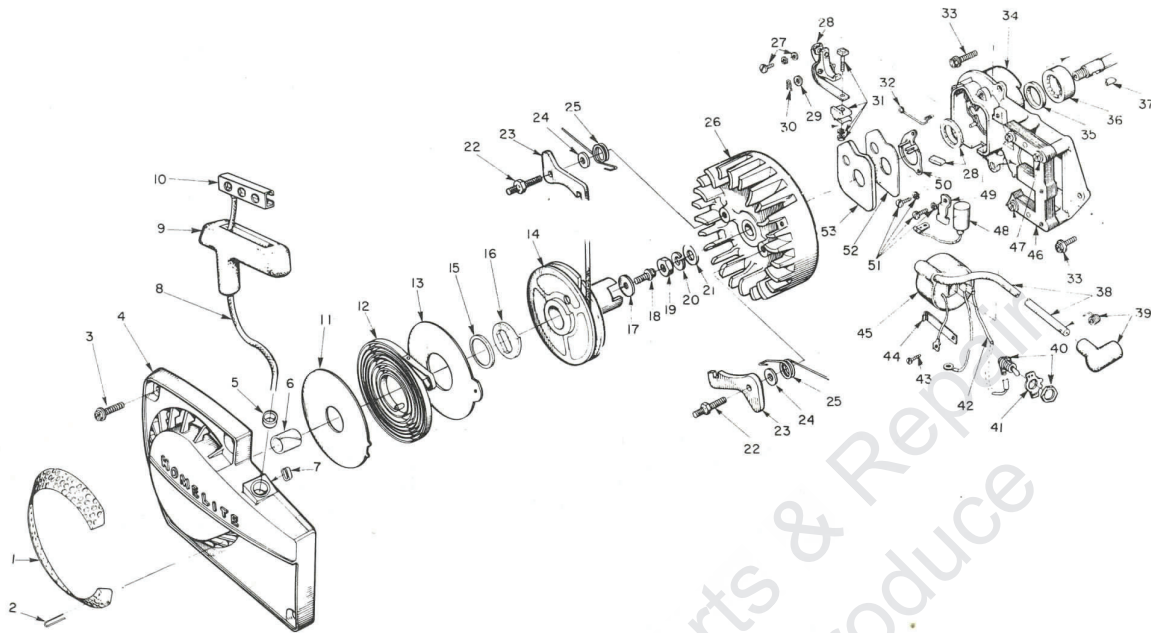


FIGURE 1

No.	Description	Part No.	XL 903		No.	Description	Part No.	XL 903	
			F	EAM				F	EAM
1	SCREEN - air	A-64421	x	x	27	SCREW GROUP - points	76421	x	x
2	Includes: FASTENER - screen	64419-1	x	x	28	POINT SET - w/felts	A-63631	x	x
3	SCREW - hex, 12-24 x 5/8	80676	x	x	29	Includes: WASHER - point	28028	x	x
4	HOUSING - fan	A-64504	x	x	30	CLIP - post	28008	x	x
5	Includes: BUSHING - rope	59313	x	x	31	TERMINAL BLOCK GROUP	A-58934	x	x
6	BUSHING - starter post	64443	x	x	32	SPRING - cover (clip)	76413	x	x
7	BUSHING - rewind spring	65830	x	x	33	SCREW - hex, 12-24 x 11/16	80751	x	x
8	ROPE - starter	58806	x	x	34	PLATE - back	A-63633	x	x
9	GRIP - rope	58915	x	x	35	Includes: SEAL	58688-A	x	x
10	INSERT	58847	x	x	36	BEARING - roller	63195	x	x
11	SHIELD - spring (inner)	63566	x	x	37	KEY	75078	x	x
12	SPRING - rewind	63268-A	x	x	38	LEAD - hi tension	63632	x	x
13	SHIELD - spring (outer)	63565-A	x	x	39	TERMINAL - spark plug	A-33055	x	x
14	PULLEY & CUP ASSEMBLY	A-64446	x	x	40	SWITCH - w/nut	A-57650-3	x	x
15	Includes: BUSHING - spring lock	64400	x	x	41	PLATE - "On - Off"	72085-A	x	x
16	LOCK - spring	64049-A	x	x	42	LEAD - ground	A-59031	x	x
17	WASHER - retaining	58763	x	x	43	SCREW - coil clip	58872	x	x
18	SCREW - hex, 10-32 x 1/2	80648	x	x	44	CLIP - coil retaining	63726	x	x
19	NUT - hex, 3/8-24	81124	x	x	45	COIL - ignition	63625	x	x
20	WASHER - lock, 3/8	83102	x	x	46	CORE - coil	63630	x	x
21	WASHER - flat, 3/8	84010-1	x	x	47	SCREW - core	64021	x	x
22	STUD - pawl	58757-B	x	x	48	CONDENSER - ignition	63626	x	x
23	PAWL - starter	58756	x	x	49	CLAMP - condenser	63627	x	x
24	WASHER	58851	x	x	50	RETAINER - felt	63628	x	x
25	SPRING - pawl	58758	x	x	51	SCREW	55411	x	x
26	ROTOR	63406	x	x	52	GASKET - cover	63316	x	x
					53	COVER - breaker box	63317	x	x

# HOMELITE XL-903E & EAM

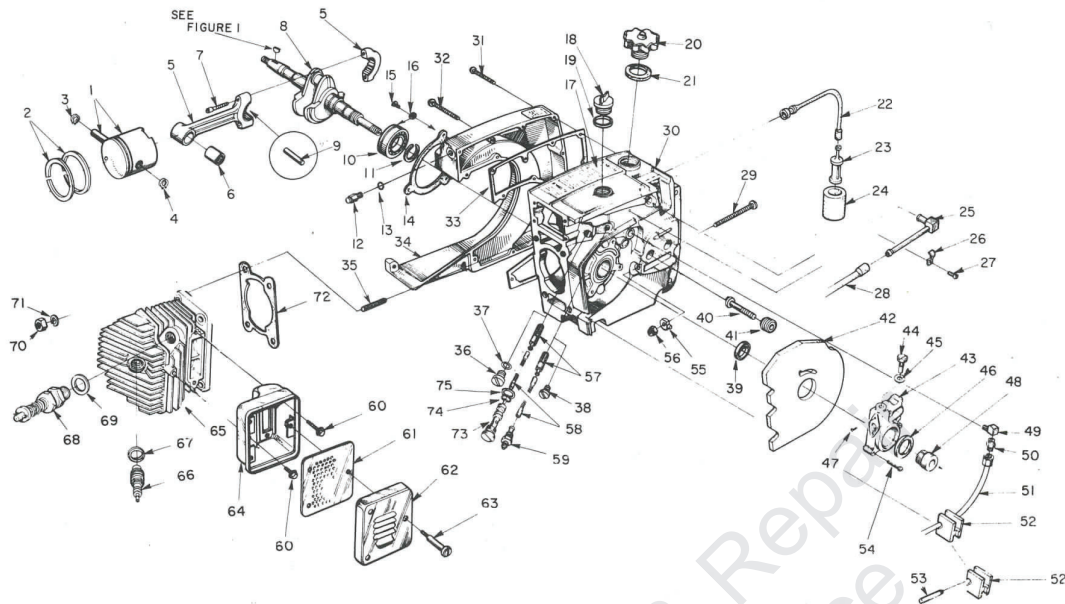


FIGURE 2

No.	Description	Part No.	XL 903			No.	Description	Part No.	XL 903		
			E	EAM	Qty.				E	EAM	Qty.
*1	PISTON & PIN - 2 1/16" bore	A-65931	x	x	1	37	WASHER	58138	x	x	1
2	Includes: RING - piston	55537	x	x	2	38	PLUG - pipe	28097	x	x	1
3	RING - retaining	55095	x	x	1	39	SEAL	58688-A	x	x	1
4	RING - retaining	64742	x	x	1	40	STUD - guide bar	59764-A	x	x	2
5	ROD - connecting	A-63309	x	x	1	41	INSERT - threaded	59896-A	x	x	2
6	Includes: BEARING - needle	59351	x	x	1	42	SHIELD - sawdust	A-64715	x	x	1
7	SCREW - soc, 8-32 x 9/16	80805	x	x	2	43	PUMP - automatic	A-64384	x	x	1
8	CRANKSHAFT	59625-2	x	x	1	44	Includes: GASKET - cam screw	59736	x	x	1
9	BEARING - needle (28 rollers)	A-64621	x	x	1	45	SCREW - cam	59737	x	x	1
10	BEARING - ball	58190-S	x	x	1	46	SEAL - felt	59926	x	x	1
11	RING - retaining	58319-A	x	x	1	47	SCREW - pan, 4-40 x 1/4	80919	x	x	2
12	VALVE - check	A-65608	x	x	1	48	GEAR - worm	59675	x	x	1
13	"O" RING	65613	x	x	1	49	CONNECTOR - elbow	31734	x	x	1
14	GASKET - sealing	63319	x	x	1	50	FITTING - straight	65696	x	x	1
15	SCREW - bearing retaining	59704	x	x	2	51	LINE - oil	A-65705	x	x	1
16	WASHER - lock	59705	x	x	2	52	GROMMET - oil line	65357	x	x	1
17	DECAL - caution	64144	x	x	1	*53	PLUG - oil line	65950	x	x	1
18	CAP - oil (vented)	A-64310	x	x	1	54	SCREW - fil., 8-32 x 3/4	80248	x	x	3
19	Includes: GASKET	56607	x	x	1	55	PIN - guide bar adjusting	58783-1	x	x	1
	VALVE - vent (not shown)	63718	x	x	1	56	NUT - lock, 1/4-20	81108	x	x	1
20	CAP - fuel	A-65809	x	x	1	57	FILTER - oil	A-64293	x	x	1
21	Includes: GASKET	58957	x	x	1			A-64293	x	x	2
22	LINE - flexible fuel	65593	x	x	1	58	LINE - oil pickup	59000	x	x	1
23	FILTER - fuel	A-59251	x	x	1			59000	x	x	2
24	Includes: FILTER	59253-1	x	x	1	59	CONNECTOR - oil filter	65695	x	x	1
25	LINE - fuel	A-65596	x	x	1	60	SCREW - hex, 12-24 x 5/8	80978	x	x	3
26	CLAMP - fuel line	65597-1	x	x	1	61	BAFFLE - muffler	63521-A	x	x	1
27	SCREW - pan, 6-32 x 5/16	80605	x	x	1	62	CAP - muffler	63520-3	x	x	1
28	LINE - fuel	65718	x	x	1	63	SCREW - shoulder	63855-A	x	x	3
29	SCREW - guide bar adjusting	63367	x	x	1	64	BODY - muffler	A-63535-1A	x	x	1
30	CRANKCASE & TANK	A-65879	x	x	1	65	CYLINDER - 2 1/16" bore	65605-1	x	x	1
	Includes: GASKET (not shown)	58338	x	x	1	66	SPARK PLUG	63547-S	x	x	1
	CAP (not shown)	58339	x	x	1	67	Includes: GASKET	25038	x	x	1
31	SCREW - fil., 8-32 x 5/8	82146	x	x	6	68	VALVE - decompression	A-65883	x	x	1
32	SCREW - fil., 8-32 x 1 3/4	82147	x	x	9	69	Includes: WASHER - copper	65825	x	x	1
33	GASKET - fuel tank	65391	x	x	1	70	NUT - hex, 1/4-28	81065-2	x	x	4
34	COVER - fuel tank	64825-4	x	x	1	71	WASHER - lock, 1/4	83009	x	x	4
35	STUD	55871	x	x	4	72	GASKET - cylinder	63778	x	x	1
36	PLUG	63115	x	x	1	73	TUBE - oil line	63452-A	x	x	1
						74	"O" RING	58406	x	x	1
						75	GASKET - oil line tube	63751	x	x	1

\*Denotes new parts

ALWAYS FURNISH MODEL AND SERIAL NUMBER WHEN ORDERING PARTS.

# HOMELITE XL-903E & EAM

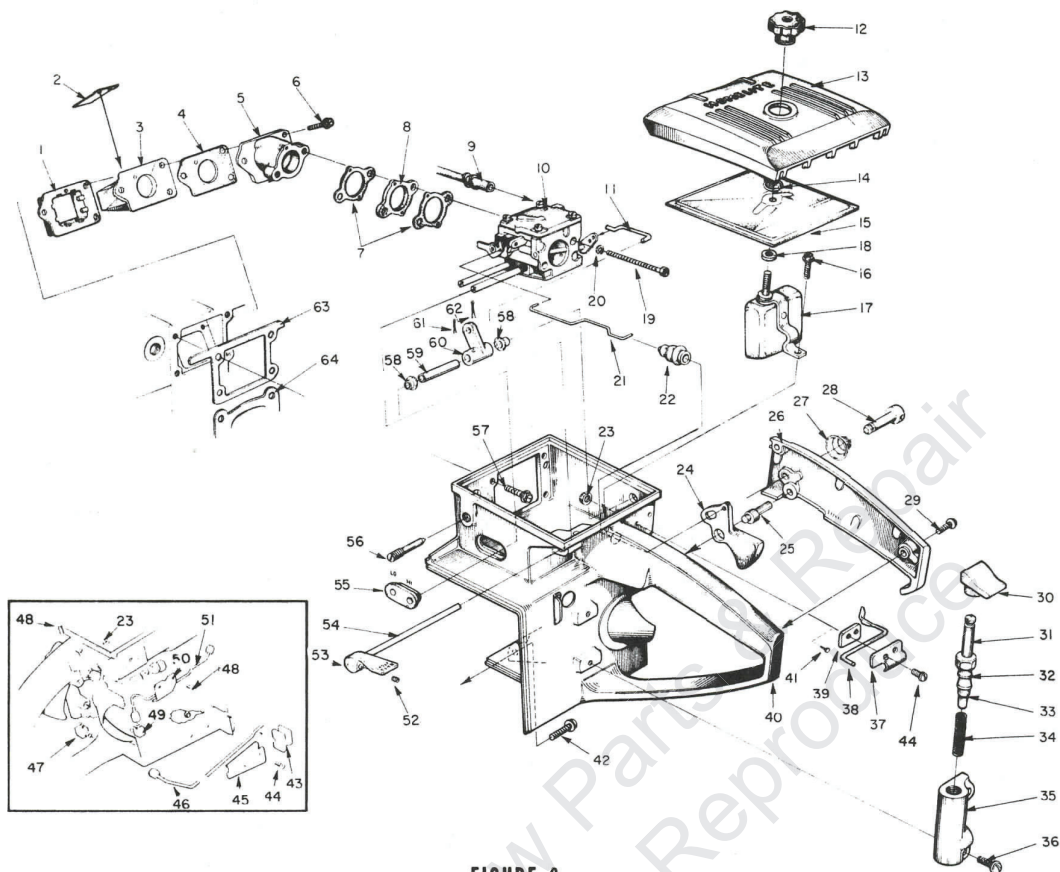


FIGURE 3

No.	Description	Part No.	XL 903		No.	Description	Part No.	XL 903		
			E	QTY.				E	QTY.	
1	RETAINER	63370	x	x	1	34	SPRING - plunger	59293	x	1
2	VALVE - reed	63166	x	x	4	35	BODY - oil pump	63343-5	x	1
3	SEAT - reed valve	63371-A	x	x	1	36	SCREW - pan, 8-32 x 3/8	80577	x	2
4	GASKET - seat	65483	x	x	1		SCREW - pan, 8-32 x 7/8	80568	x	2
5	SPACER - reed valve seat	63019-1A	x	x	1	37	CLAMP - lever	65821-1	x	1
6	SCREW - shoulder	65489	x	x	3	38	LEVER - poppet valve	65630	x	1
7	GASKET - carburetor	63254	x	x	2	39	PLATE	65629-1	x	1
8	SPACER - carburetor	63256	x	x	1	*40	HANDLE - throttle	A-65881-A	x	1
9	LINE - fuel	65718	x	x	1	41	Includes: PLUG - accordian	65889	x	2
10	CARBURETOR	A-65578	x	x	1	42	SCREW - hex, 12-24 x 7/8	80891	x	1
11	LINK - choke	65508	x	x	1	43	GROMMET - oil line	65357	x	1
12	NUT - cover mounting	A-63582-A	x	x	1	44	SCREW - pan, 6-32 x 3/8	80571	x	2
13	COVER - air filter	63634-1	x	x	1			80571	x	6
14	RING - retainer	58319-A	x	x	1	45	CLAMP - oil line	65513-1	x	1
15	FILTER ELEMENT - air	63341	x	x	1	46	LINE - oil	A-65682	x	1
16	SCREW - hex, 12-24 x 1/2	80821	x	x	1	47	VALVE - check	A-65515	x	1
17	DEFLECTOR - air, w/bracket	A-63593	x	x	1	48	SCREW - fil., 8-32 x 5/8	80023-2	x	1
18	Includes: GASKET - mounting nut	58392-1	x	x	1	49	VALVE - check	A-65502	x	1
19	SCREW - hex, 10-32 x 2	80965	x	x	2	50	CLAMP - oil line	65660-1	x	1
20	WASHER - lock, #10	83046	x	x	2	51	LINE - oil	A-65705	x	1
21	ROD - throttle	63266	x	x	1	52	SCREW - soc, 8-32 x 5/16	80701	x	1
22	BOOT - throttle rod	58348	x	x	1	53	LEVER - choke	65490-2	x	1
23	NUT - lock, 6-32	81126	x		2	54	SHAFT - choke	65510	x	1
		81126		x	6	55	GROMMET - "hi - lo"	58858	x	1
24	TRIGGER - throttle	65745	x	x	1	56	SCREW - idle adjustment	63369	x	1
25	PIN - throttle lock adjusting	65719	x	x	1	57	SCREW - hex, 12-24 x 5/8	80676	x	4
*26	COVER - throttle handle	A-65882-A	x	x	1	58	BUSHING - throttle handle	63400	x	2
	Includes: BUSHING - throttle lock	65878	x	x	1	59	SLEEVE - spacer	65716	x	1
27	SPRING - lock	65714	x	x	1	60	BELLCRANK - choke	65511	x	1
28	PIN - throttle lock	65822	x	x	1	61	PIN - cotter	86301	x	1
29	SCREW - pan, 8-32 x 1/2	80560	x	x	2	62	PIN - cotter	86324	x	1
30	BUTTON	63622	x		1	63	GASKET - throttle handle	63779-B	x	1
31	PLUNGER - oil pump	A-57834-16	x		1	64	GASKET - cylinder	63778	x	1
32	Includes: "O" RING - shaft	59074	x		1					
33	"O" RING - plunger	74388	x		1					

\* Denotes new parts

# HOMELITE XL-903E & EAM

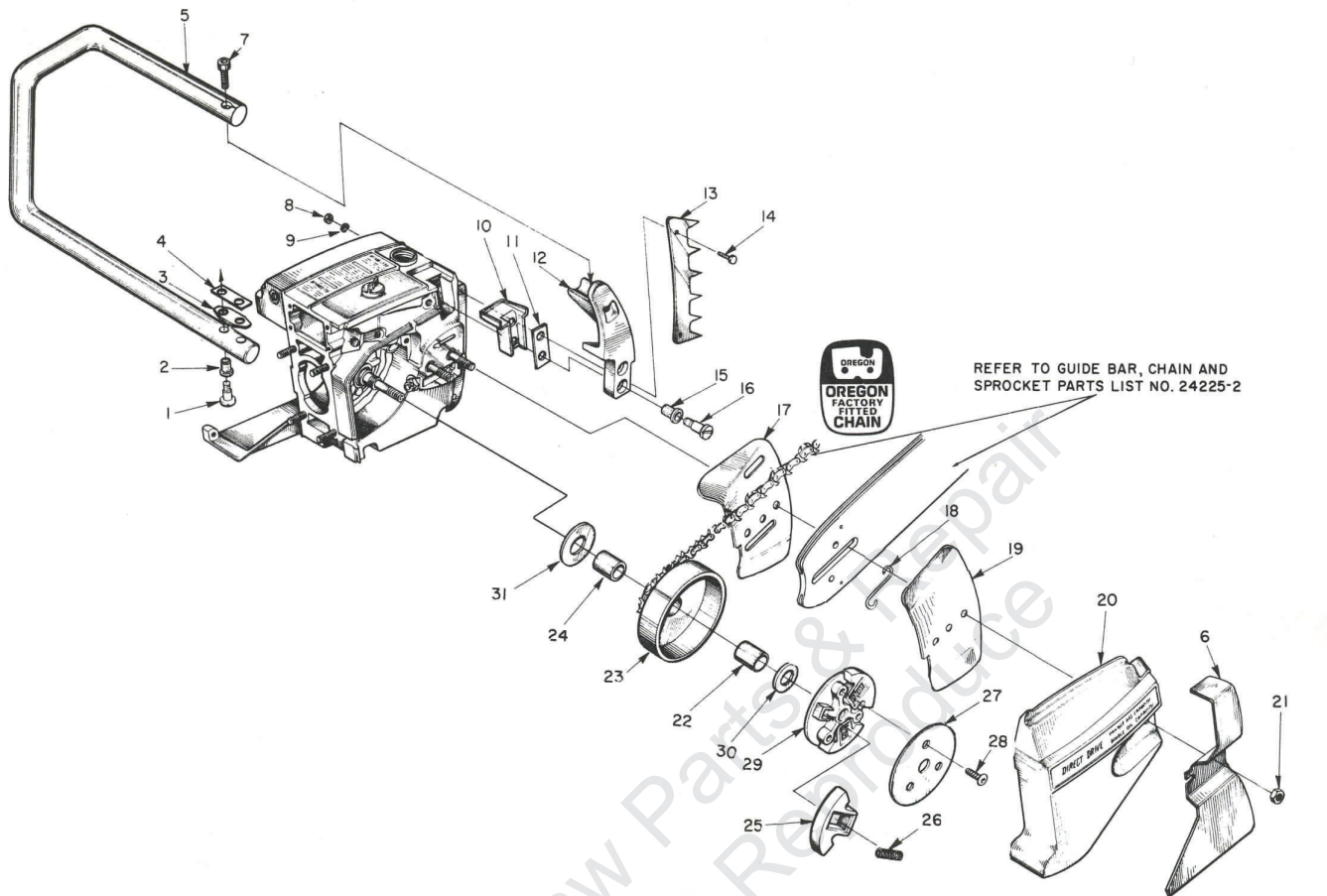


FIGURE 4

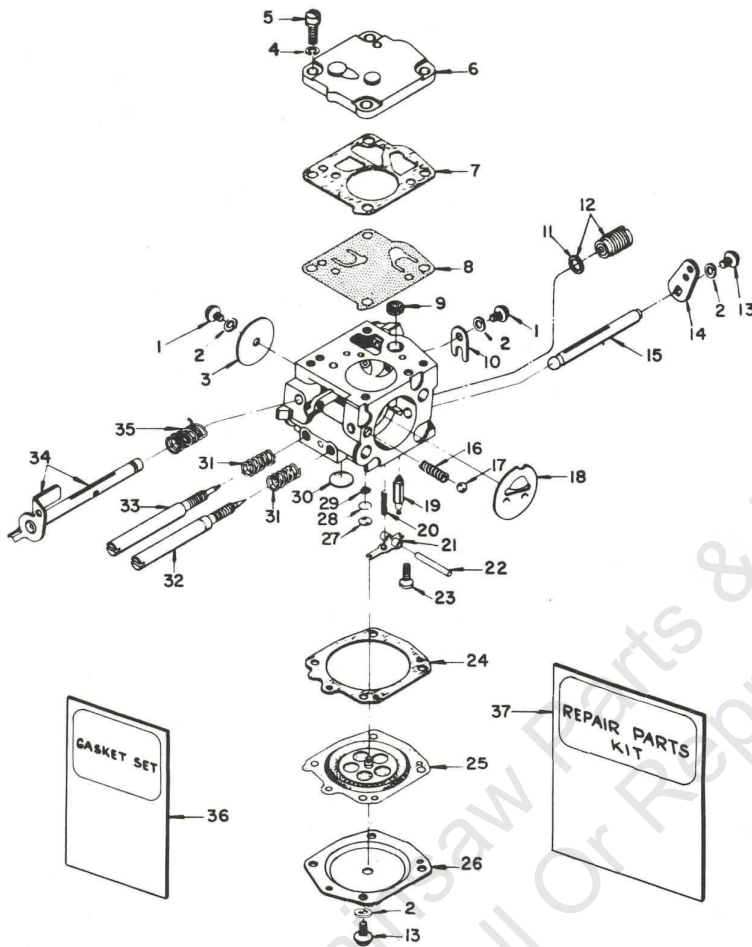
No.	Description	Part No.	XL 903		No.	Description	Part No.	XL 903			
			E	EAM				E	EAM		
1	SCREW - shoulder	65520	x	x	2	14	SCREW - hex, 12-24 x 3/4	80867	x	x	2
2	GROMMET - handle bar	65518	x	x	2	15	GROMMET	65519	x	x	2
3	PLATE - handle bar	65599	x	x	1	16	SCREW - shoulder	65521	x	x	2
4	SPACER - handle bar	65542	x	x	1	17	PLATE - guide bar (inner)	58781	x	x	1
*5	HANDLE BAR - flush cut	A-65860-1	x	x	1	18	SPRING - guide bar	64448	x	x	1
	KIT - full wrap around (optional) ①	A-65894	x	x	1	19	PLATE - guide bar (outer)	58782	x	x	1
	Includes: HANDLE BAR - wrap around ①	A-65814-2	x	x	1	20	COVER - drivecase	63009-2	x	x	1
6	GUARD - chain	64867-1	x	x	1	21	NUT - 5/16-18	81196	x	x	2
	BRACKET - handle bar ①	65607-5	x	x	1	22	BEARING - needle	64124	x	x	1
	KIT - 3/4 wrap around (optional)	A-65902	x	x	1	23	SPROCKET & DRUM				
	Includes: HANDLE BAR	A-65900	x	x	1		Standard - 3/8" pitch, 8 tooth	A-65885	x	x	1
	BRACKET	65607-5	x	x	1		Optional - 3/8" pitch, 7 tooth	A-65884	x	x	1
	BRACE	63660	x	x	1		.404" pitch, 7 tooth	A-65886	x	x	1
	SCREW - hex, 12-24 x 3/4	80867	x	x	1		.404" pitch, 8 tooth	A-65887	x	x	1
7	SCREW - soc, 1/4-20 x 1	80428	x	x	1	24	RACE - inner	64129	x	x	1
8	NUT - 12-24	81068	x	x	2	25	SHOE - clutch	64569	x	x	3
9	WASHER - lock, #12	83056	x	x	2	26	SPRING - clutch	65842	x	x	3
10	MOUNT - shock	65509	x	x	1	27	COVER - clutch	63051-1	x	x	1
11	PLATE - handle bar bracket	65598	x	x	1	28	SCREW - hex, 1/4-20 x 1/2	64471	x	x	3
12	BRACKET - handle bar (flush cut)	65607-2	x	x	1	29	PLATE - clutch	63053-2	x	x	1
13	BUMPER - spiked	63549	x	x	1	30	WASHER - thrust (outer)	63462	x	x	1
						31	WASHER - thrust (inner)	63463	x	x	1

\*Denotes new parts

① Wrap around HANDLE BAR and special BRACKET also requires #63660 BRACE (not shown) mounted on drivecase cover. Attach BRACE to HANDLE BAR with one #80867 SCREW.

ALWAYS FURNISH MODEL AND SERIAL NUMBER WHEN ORDERING PARTS.

# HOMELITE XL-903E & EAM



Assembly Number  
A-65578

TILLOTSON MODEL HS-56A

No.	Part No.	Description	Qty.	No.	Part No.	Description	Qty.
1	80264	†SCREW - rd. hd., 4-40 x 3/16	2	19	59717	†NEEDLE - inlet	1
2	83008-1	†WASHER - lock, #4	4	20	55759	†SPRING - control lever	1
3	25050	SHUTTER - throttle	1	21	59716	†LEVER - inlet control	1
4	83024	WASHER - lock, #6	1	22	58977	†PIN - control lever fulcrum	1
5	80275	SCREW - fil. hd., 6-32 x 3/8	4	*23	65798	†SCREW - oval hd., 4-40 x 1/4	1
6	58975	COVER - fuel pump diaphragm	1	24	58978	GASKET - main diaphragm	1
7	58981	GASKET - pump diaphragm	1	25	58988	†DIAPHRAGM - main control	1
8	58980-R	†DIAPHRAGM - fuel pump	1	26	58979	COVER - main diaphragm	1
9	58974	†SCREEN - fuel inlet	1	27	58994	†PLUG - extension (small)	1
10	58982	CLIP - throttle shaft retaining	1	28	57819	RING - retaining	1
11	74060	GASKET	1	29	59500	SCREEN - channel	1
*12	A-65801	VALVE - governor	1	30	58991	†PLUG - extension (large)	1
13	80591	SCREW - rd. hd., 4-40 x 1/4	5	31	73075	†SPRING - adjustment needle	2
*14	65800	LEVER - choke	1	32	63676	†SCREW - main adjustment	1
*15	65799	SHAFT - choke	1	33	63677	†SCREW - idle adjustment	1
16	73264	SPRING - choke friction	1	34	A-63345	SHAFT - throttle w/lever	1
17	25527	BALL - check	2	35	59460	†SPRING - throttle opening	1
18	58984	SHUTTER - choke	1	*36	65895	†GASKET SET	1
				*37	65896	REPAIR KIT	1
					63711	GASKET & DIAPHRAGM SET	1

† Indicates contents of Repair Kit.

\* Denotes new parts.

# HOMELITE XL-903E & EAM

## ACCESSORIES

A-63540-A SPARK ARRESTOR ASSEMBLY

## SPECIAL TOOLS-available on order

A-23937-B	COMBINATION WRENCH	23987	SHIM - point gap
22828	PLIERS - piston snap ring	A-23934	WRENCH - clutch
23528	WRENCH - socket screw (conn. rod)	A-23841-A	WRENCH - insert (guide bar stud)
23955	PLUG - bearing installation (conn. rod)	A-23960	PULLER - rotor
A-23965	JACKSCREW	23420	PLUG - bearing installation (sprocket)
23136-1	BODY - jackscrew	23956	PLUG - bearing & seal installation (back plate)
22820-4	COLLAR - bearing	A-23962	REMOVER - bearing (back plate)
23846-1	ANVIL - crankshaft installation	23846-2	ANVIL - bearing disassembling (back plate)
23971	SLEEVE - seal protecting (crankcase)	24006-1	PLATE - crankshaft aligning
23972	SLEEVE - seal installation (crankcase)	24230	DRIVER - hand ("pozidriv")
23957	PLUG - seal installation (crankcase)		

### Paint

22771	SPRAY CAN - red
23318	SPRAY CAN - blue
23560	SPRAY CAN - white
23343	SPRAY CAN - green
22772	SPRAY CAN - black

XL

CHAIN SAW

**HOMELITE**

A **Textron!** DIVISION • PORT CHESTER, NEW YORK

Leon's Chainsaw Parts & Repair  
Do Not Sell Or Reproduce