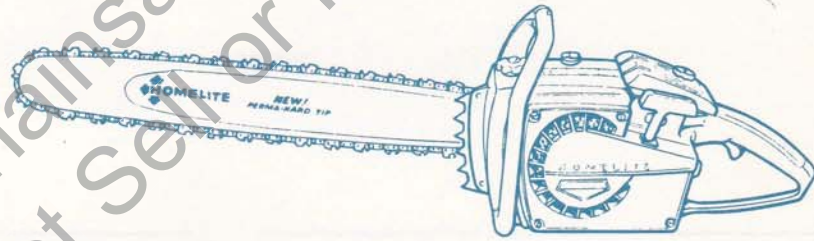


PRICE.25

# PARTS LIST



# HOMELITE®



Leon's Chainsaw Parts & Repair  
Do Not Sell or Reproduce

# XL

## CHAIN SAWS

# HOMELITE XL-902 AM

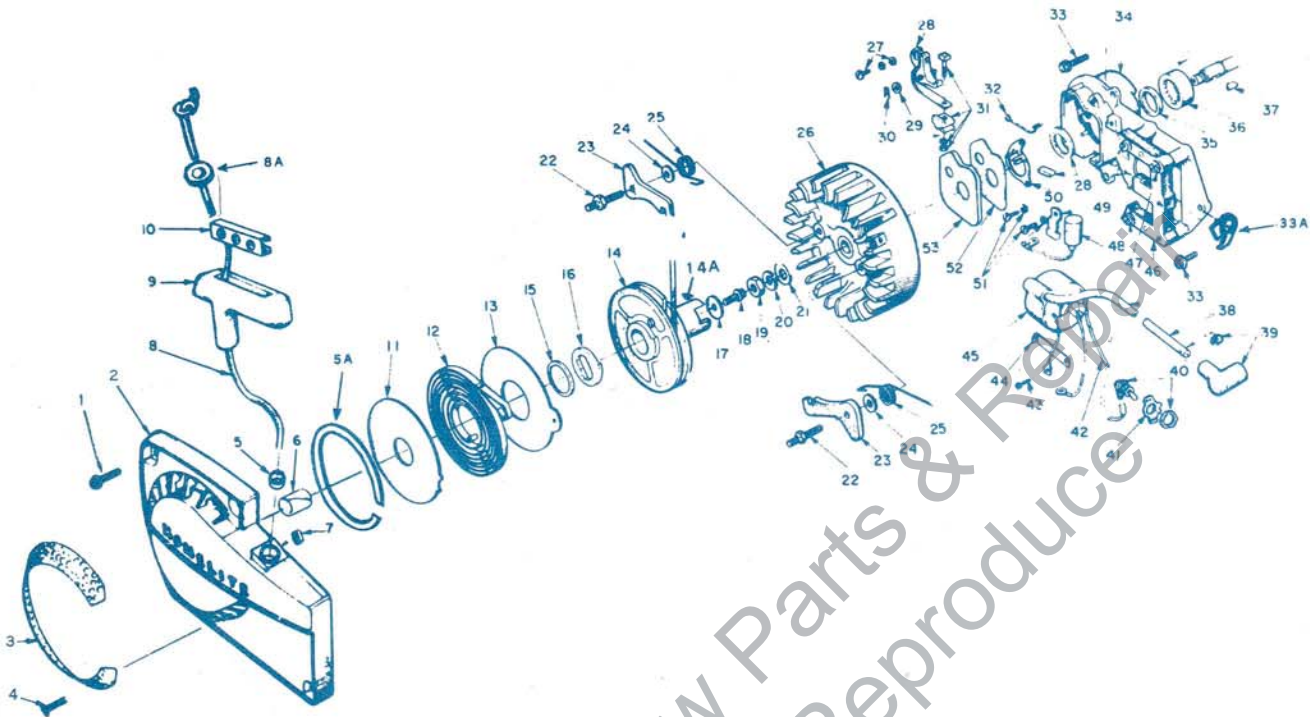


FIGURE 1

No.	Description	Part No.	Qty.
1	SCREW - Hex, 12 - 24 x 5/8	80676	4
2	HOUSING - Fan	A-64504-B	1
3	Includes: SCREEN - Air	64420-AT	11
4	STUD - Screen	67191	1
5	BUSHING - Rope	59313	1
5A	RING - Air Flow	67409	1
6	BUSHING - Starter Post	64443	1
7	BUSHING - Rewind Spring	65800	1
8	ROPE - starter	58806-T	1
8A	WASHER flat	120773	1
9	GRIP - rope	58915	1
10	INSERT	58847	1
11	SHIELD - spring (inner)	63566	1
12	SPRING - rewind	63268-A	1
13	SHIELD - spring (outer)	63565-A	1
14	PULLEY - starter	64398-1A	1
14A	CUP - starter	64399	1
15	BUSHING - spring lock	64400	1
16	LOCK - spring	64049-A	1
17	WASHER - retaining	58763	1
18	SCREW - hex, 10-32 x 1.2	80648	1
19	NUT - hex, 3/8-24	81124	1
20	WASHER - lock, 3/8	83102	1
21	WASHER - flat, 3/8	84010	1
22	STUD - pawl	58757-B	2
23	PAWL - starter	58756	2
24	WASHER	58851	2
25	SPRING - pawl	58758	2
26	ROTOR	63406	1

No.	Description	Part No.	Qty.
27	SCREW GROUP - points	76421	1
28	POINT SET - w/felts	A-63631	1
29	Includes: WASHER - point	28028	1
30	CLIP - post	28008	1
31	TERMINAL BLOCK GROUP	A-58934	1
32	SPRING - cover (clip)	76413	1
33	SCREW - hex, 12-24 x 11/16	80048	4
33A	WASHER tab	121297	1
34	PLATE - back	A-67602-T	1
35	Includes: SEAL	58688-A	1
36	BEARING - roller	63195	1
37	KEY	75078	1
38	LEAD - hi tension	63632	1
39	TERMINAL - spark plug	A-33055	1
40	SWITCH - w/nut	A-57650-3	1
41	PLATE - "On - Off"	72085-A	1
42	LEAD - ground	A-59031	1
43	SCREW - coil clip	64090	1
44	CLIP - coil retaining	63726	1
45	COIL - ignition	63625	1
46	CORE - coil	63630	1
47	SCREW - core	64021	4
48	CONDENSER - ignition	63626	1
49	CLAMP - condenser	63627	1
50	RETAINER - felt	63628	1
51	SCREW	55411	3
52	GASKET - cover	63316	1
53	COVER - breaker box	63317	1

ALWAYS FURNISH MODEL AND SERIAL NUMBER WHEN ORDERING PARTS.



# HOMELITE XL-902 AM

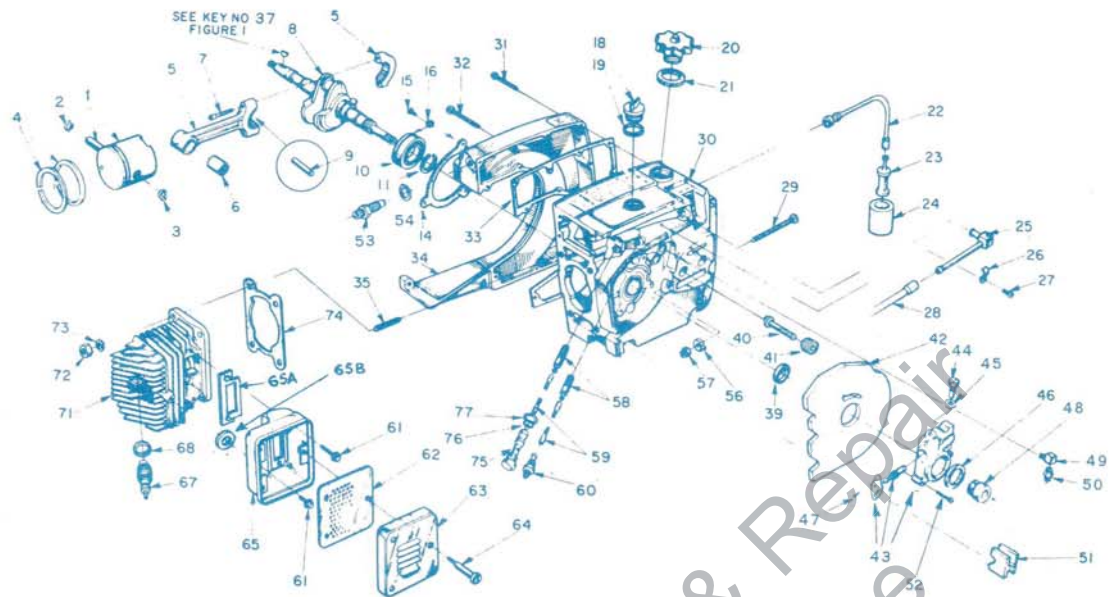


FIGURE 2

No.	Description	Part No.	Qty.	No.	Description	Part No.	Qty.
1	KIT, Piston	A-121692		35	STUD	55871	4
2	INCLUDES: RING, Retaining	55095		39	SEAL	58688-A	1
3	RING-Retaining	120105	1	40	STUD - guide bar	59764-A	2
4	RING - Piston	55038	2	41	INSERT - threaded	59896-T	2
5	ROD - connecting	A-63309-1	1	42	SHIELD - saw dust	64156	1
6	Includes: BEARING - needle	59351	1	43	PUMP-Automatic Oiler	A-64384	1
7	SCREW - socket hd. cap, 8-32 x 9/16	80805	2	44	Includes: SCREW-Cam	64102-A	1
8	CRANKSHAFT	59625-2	1	45	GASKET -	59736	1
9	BEARING - needle (28 rollers)	A-63621	1	46	SEAL-Felt	59926	1
10	BEARING - ball	58190	1	47	SCREW-Pan 4-40x¼	80919	2
11	RING - retaining	58319-A	1	48	GEAR-WORM	59675	1
14	GASKET - sealing	63319-AT	1	49	CONNECTOR-elbow	31734	1
15	SCREW - bearing retaining	59704	2	50	FITTING - straight	65696	1
16	WASHER - lock	59705	2	*51	GROMMET - oil line	65357	1
18	CAP - oil (vented)	A-120874	1	52	SCREW - fil., 8-32 x ¼	80248	3
19	Includes: GASKET	59607	1	53	VALVE-check	A-65608	1
	VALVE - vent (not shown)	63718	1	54	"O" Ring	65613	1
*20	CAP - fuel	A-120873	1	56	PIN - guide bar adjusting	58783-1	1
21	Includes: GASKET	58957	1	57	NUT - lock, 1/4-20	81108	1
*22	LINE - flexible fuel	65593	1	58	FILTER - oil	A-64293	2
23	FILTER - fuel	A-59251	1	59	LINE - oil pickup	64356	2
24	Includes: FILTER	59253	1	*60	CONNECTOR - oil filter	65695	1
*25	LINE - fuel	67080	1	61	SCREW - hex, 12-24 x 5/8	121430	3
*26	CLAMP - fuel line	65597-1	1	62	BAFFLE - muffler	65633	1
27	SCREW - pan, 6-32 x 5/16	80605	1	63	CAP - muffler	63520-3T	1
*28	LINE - fuel	65718	1	64	SCREW - shoulder	63855-A	3
29	SCREW - guide bar adjusting	63367	1	65	BODY - muffler	A-63535-1T	1
*30	CRANKCASE & TANK	A-65879-CT	1	65A	GASKET - muffler	120910	1
	Includes:			65B	WASHER - muffler	84008	1
31	SCREW - fil, hd. 8-32 x 5/8	82146	6	67	SPARK PLUG 6J-6	63547-S	1
32	SCREW - fil, hd. 8-32 x -3/4	82147	9	68	Includes: GASKET	25038	1
33	GASKET - fuel tank	65391	1	71	CYLINDER - 2" bore	63012-2-AT	1
*34	COVER - fuel tank	64825-4	1	72	NUT - hex, 1/4 x 28	81065-2	4
				73	WASHER - lock, 1/4	83009	4
				74	GASKET - cylinder	63778-1	1
				75	TUBE - oil line	63452-A	1
				76	"O" RING	58406	1
				77	GASKET - oil line tube	63751	1

\* Denotes new parts.

ALWAYS FURNISH MODEL AND SERIAL NUMBER WHEN ORDERING PARTS.

# HOMELITE XL-902 AM

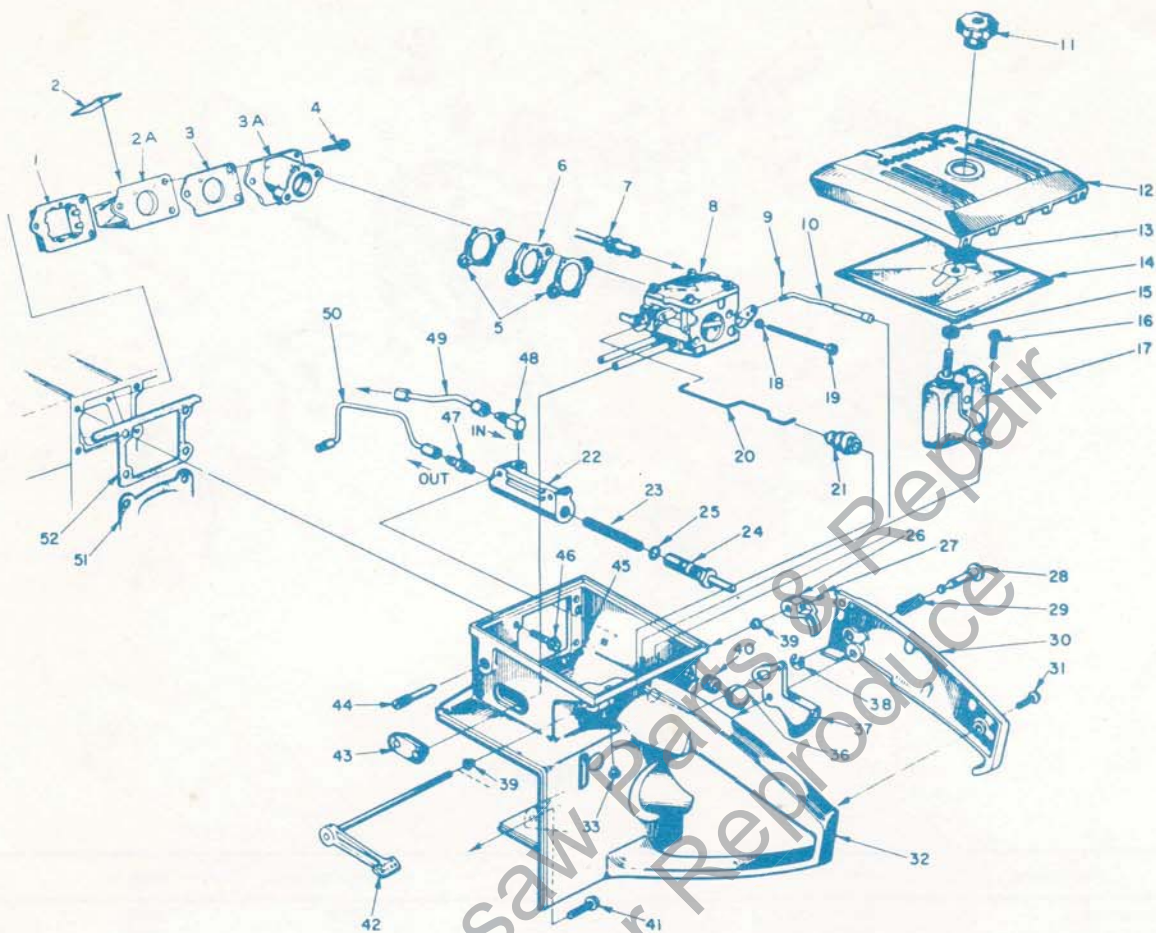


FIGURE 3

No.	Description	Part No.	Qty.
1	RETAINER - reed valve	63370-A	1
2	VALVE - reed	63166-A	4
2A	SEAT - reed valve	63371-B	1
3	GASKET - seat	65483	1
3A	SPACER - reed valve seat	63019-1A	1
4	SCREW -	55489	3
5	GASKET - carburetor	63254	2
6	SPACER - carburetor	63256	1
7	LINE - fuel	65718	1
8	CARBURETOR	A-65578	1
9	PIN - cotter	86324	1
10	ROD - choke	120858	1
11	NUT - cover mounting	A-63582-A	1
12	COVER - air filter	63634-7T	1
13	RING - retainer	58319-A	1
14	FILTER ELEMENT - air	63341	1
15	GASKET - mounting nut	58392-1	1
16	SCREW - hex, 12-24 x 1/2	80821	1
17	DEFLECTOR - air, w/bracket	A-67101 (includes item 15)	1
18	WASHER - lock, # 10	83046	2
19	SCREW - hex, 10-32 x 2	80965	2
20	ROD - throttle	63266-A	1
21	BOOT - throttle rod	58348	1
22	BODY - oil pump	63343-3	1
23	SPRING - plunger	59293	1
24	PLUNGER - oil pump	A-57834-14	1
	Includes: "O" RING - shaft	59074	1

No.	Description	Part No.	Qty.
25	"O" RING - plunger	74388	1
26	LEVER - oiler	63280-2A	1
27	SCREW - Fil. Ho. 8-32 x 1/4	80018	1
28	PIN - throttle lock	58924	1
29	SPRING - lock	58405	1
30	COVER - throttle handle	A-63325-1AT	1
	Includes: BUSHING - pin	59064	1
31	SCREW - pan, 8-32 x 1/2	80560	2
32	HANDLE - throttle	A-63683-DT	1
33	Includes: BUMPER - rubber	56298	1
36	BUTTON	57289-1	1
37	THROTTLE - trigger	58859	1
38	RING - retaining	58409	1
39	BUSHING - throttle handle	63400	2
40	GROMMET	58362	1
41	SCREW - hex, 12-24 x 7/8	80891	1
42	LEVER - oiler w/shaft	A-63327	1
43	GROMMET	64664	1
44	SCREW - idle adjustment	63369	1
45	SCREW - sl. hex, 8-32 x 1/2	80983	2
46	SCREW - hex, 12-24 x 5/8	80676	4
47	VALVE - check (outlet)	A-65948	1
48	VALVE - check (inlet)	A-65502	1
49	LINE - oil (intake)	120856	1
50	LINE - oil	120862	1
51	GASKET - cylinder	63778-1	1
52	GASKET - throttle handle	63779-B	1



# HOMELITE XL-902 AM

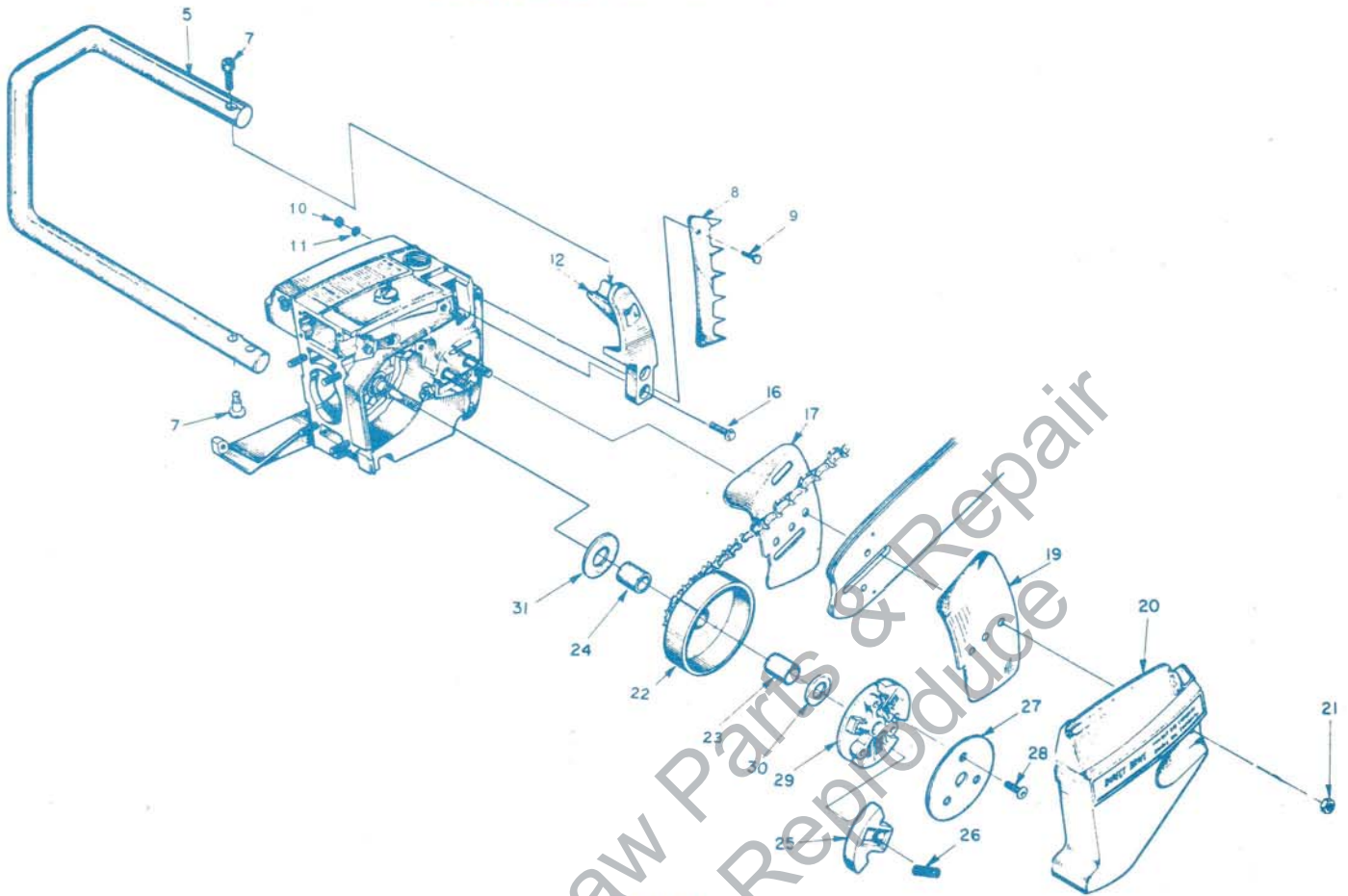


FIGURE 1

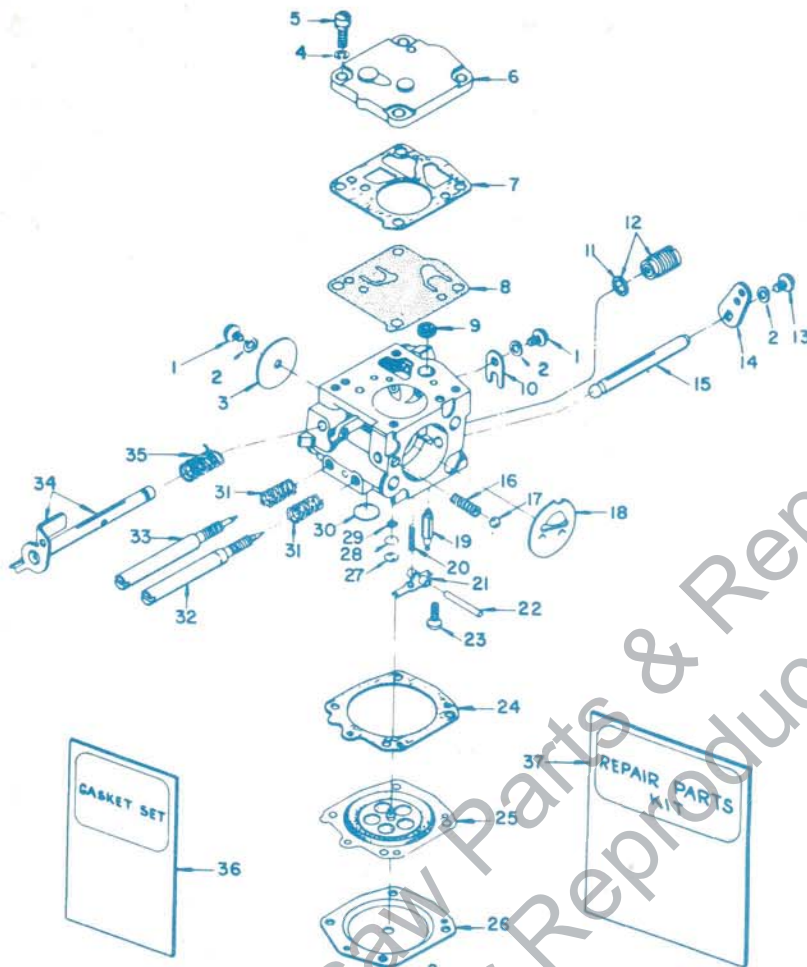
No.	Description	Part No.	Qty.	No.	Description	Part No.	Qty.
5	HANDLE BAR - flush cut	P20208-1	1	19	PLATE - guide bar (outer)	58782-T	1
*6	HANDLE BAR - wrap around	A-65814-2T	1	20	COVER - drivecase	63009-2	1
7	SCREW - Fil. 1/4-20 x 1	80060	3	21	NUT - 5/16-18	81196	2
*8	KIT-spiked bumper	A-63720	1	22	SPROCKET & DRUM - 3/8" pitch, 8 tooth	A-65885-T	1
9	Includes: SCREW-hex 12-24 x 3/4	80867	2	23	Includes: BEARING NEEDLE	64124	1
10	NUT, 12-24	81068	2	24	RACE - inner	64129	1
11	WASHER, Lock #12	83056	2	25	SHOE - clutch	64569	3
12	BRACKET - handle bar (flush cut)	121295-3	1	26	SPRING - clutch	65842	3
13	BRACKET - handle bar (wrap around)	121513-1	1	27	COVER - clutch	63051-1	1
16	SCREW-Hex, 12-24 x 3/4	80867	2	28	SCREW - hex, 1/4-20 x 1/2	64471	3
17	PLATE - guide bar (inner)	58781-T	1	29	PLATE - clutch	63053-2	1
* Only for XL902W				30	WASHER - thrust (outer)	63462	1
				31	WASHER - thrust (inner)	63463	1

## SPECIAL TOOLS (available on order)

Part No.	Description	Part No.	Description
A-23937-A	COMBINATION WRENCH	A-23934	WRENCH
22828	PLIERS - piston snap ring	A-23696	REMOVER - threaded spider
23528	WRENCH - socket screw (conn. rod)	A-23841-A	WRENCH - insert (guide bar stud)
23955	PLUG - bearing installation (conn. rod)	A-23960	PULLER - rotor
A-23137	JACKSCREW	23819	PLUG - needle bearing (sprocket)
A-23965	JACKSCREW	23420	PLUG - bearing installation (sprocket)
23136	BODY - jackscrew	23956	PLUG - bearing and seal installation (back plate)
23136-1	BODY - jackscrew	A-23962	REMOVER - bearing (back plate)
22820-4	COLLAR - bearing	23846-2	ANVIL - bearing disassembling (back plate)
23846-1	ANVIL - crankshaft installation	A-23951	PLUG - piston pin removal
23759	SLEEVE - seal protecting (crankcase)	24006-1	PLATE - crankshaft aligning
23971	SLEEVE - seal protecting (crankcase)		
23972	SLEEVE - seal installation (crankcase)		PAINT
23957	PLUG - seal installation (crankcase)	23343	SPRAY CAN - green
23987	SHIM - point gap	22771	SPRAY CAN - red
		23560	SPRAY CAN - white

ALWAYS FURNISH MODEL AND SERIAL NUMBER WHEN ORDERING PARTS.

# HOMELITE XL-902 AM



Assembly Number  
A-65578

TILLOTSON MODEL HS-56A

No.	Part No.	Description	Qty.	No.	Part No.	Description	Qty.
1	80264	† SCREW - rd. hd., 4-40 x 3/16	2	19	59717	† NEEDLE - inlet	1
2	83008-1	† WASHER - lock, #4	4	20	55759	† SPRING - control lever	1
3	25050	SHUTTER - throttle	1	21	59716	† LEVER - inlet control	1
4	83024	WASHER - lock, #6	1	22	58977	† PIN - control lever fulcrum	1
5	80275	SCREW - fil. hd., 6-32 x 3/8	4	*23	65798	† SCREW - oval hd., 4-40 x 1/4	1
6	58975	COVER - fuel pump diaphragm	1	24	58978	GASKET - main diaphragm	1
7	58981	GASKET - pump diaphragm	1	25	58988	† DIAPHRAGM - main control	1
8	58980-R	† DIAPHRAGM - fuel pump	1	26	58979	COVER - main diaphragm	1
9	58974	† SCREEN - fuel inlet	1	27	58994	† PLUG - extension (small)	1
10	58982	CLIP - throttle shaft retaining	1	28	57819	RING - retaining	1
11	74060	GASKET	1	29	59500	SCREEN - channel	1
*12	A-65801	VALVE - governor	1	30	58991	† PLUG - extension (large)	1
13	80591	SCREW - rd. hd., 4-40 x 1/4	5	31	73075	† SPRING - adjustment needle	2
*14	65800	LEVER - choke	1	32	63676	† SCREW - main adjustment	1
*15	65799	SHAFT - choke	1	33	63677	† SCREW - idle adjustment	1
16	73264	SPRING - choke friction	1	34	A-63345	SHAFT - throttle w/lever	1
17	25527	BALL - check	2	35	59460	† SPRING - throttle opening	1
18	58984	SHUTTER - choke	1	*36	65895	† GASKET SET	1
				*37	65896	REPAIR KIT	1

† Indicates contents of Repair Kit.

\* Denotes new parts.

ALWAYS FURNISH MODEL AND SERIAL NUMBER WHEN ORDERING PARTS.

PART NO. 120918

## TERRY INDUSTRIES

A DIVISION OF **textron** CANADA LIMITED

180 Labrosse Ave., Pointe Claire, Que.

