

PRICE.25

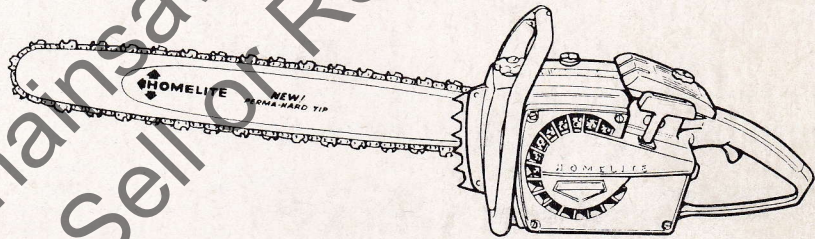
# PARTS LIST

**XL-901**

**XL-903**

**XL-904**

# HOMELITE®



Leon's Chainsaw Parts & Repair  
Do Not Sell or Reproduce

# XL

## CHAIN SAWS

PART NO. 24229

Printed in U.S.A.

768



# HOMELITE XL-901, XL-903, & XL-904 CHAIN SAW

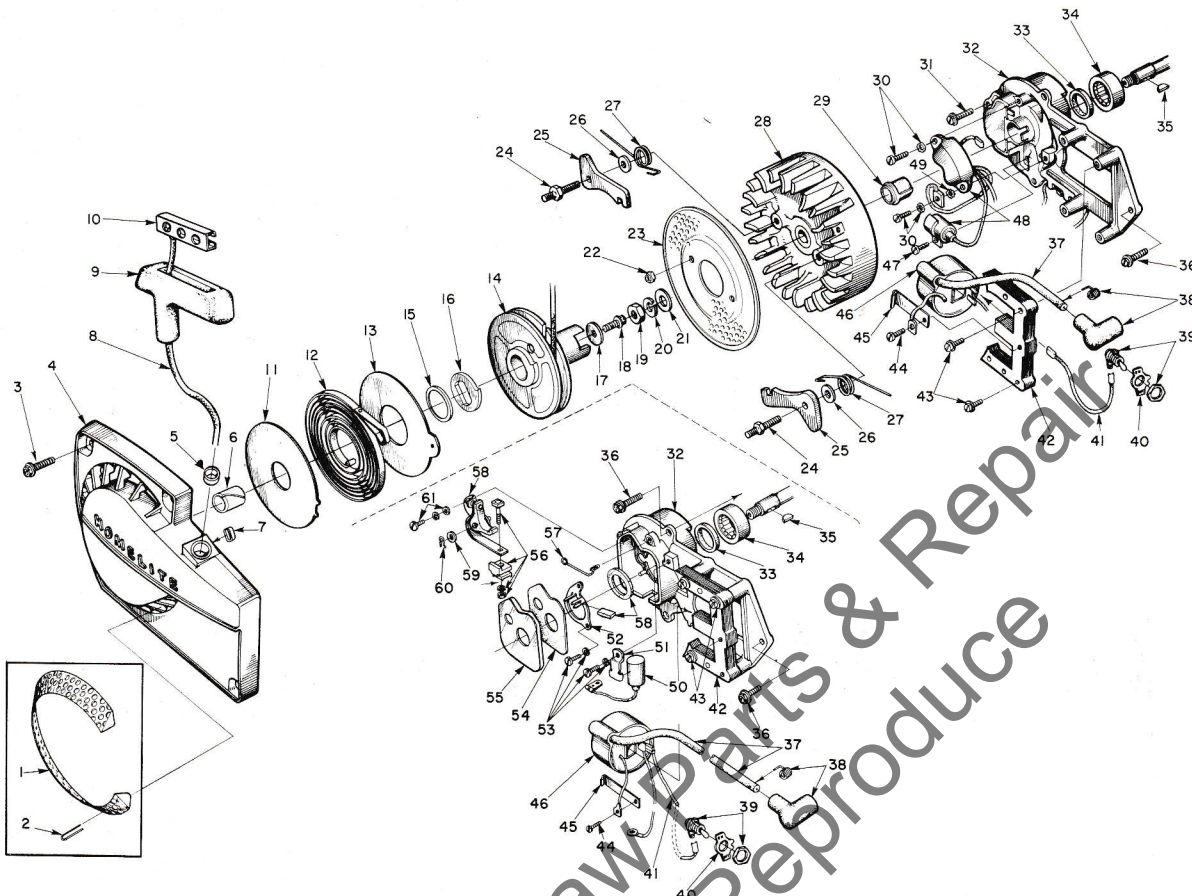


FIGURE 1

No.	Description	Part No.	XL 901	XL 903	XL 904	Qty.	No.	Description	Part No.	XL 901	XL 903	XL 904	Qty.
1	SCREEN - (optional)	A-64421	X	X	X	1	31	SCREW - hex, 12-24 x 5/8	80707			X	3
2	Includes: FASTENER-screen (optional)	64419-1	X	X	X	6	32	PLATE - back	A-63633	X	X		1
3	SCREW - hex, 12-24 x 5/8	80676	X	X	X	4	33	PLATE - back & trigger	A-65766			X	1
4	HOUSING - fan	A-64504	X	X	X	1	34	Includes: SEAL	58688-A	X	X	X	1
5	Includes: BUSHING - rope	59313	X	X	X	1	35	BEARING - roller	63195	X	X	X	1
6	BUSHING - starter post	64443	X	X	X	1	36	KEY	75078	X	X	X	1
7	BUSHING - rewind spring	65830	X	X	X	1	36	SCREW - hex, 12-24 x 11/16	80751	X	X		4
8	ROPE - starter	58806	X	X	X	1	37	SCREW - hex, 12-24 x 11/16	80751			X	1
9	GRIP - rope	58915	X	X	X	1	37	LEAD - hi tension	63632	X	X	X	1
10	INSERT	58847	X	X	X	1	38	TERMINAL - spark plug	A-33055	X	X	X	1
11	SHIELD - spring (inner)	63666	X	X	X	1	39	SWITCH - w/nut	A-57650-3	X	X	X	1
12	SPRING - rewind	63268-A	X	X	X	1	40	PLATE - "On-Off"	72085-A	X	X	X	1
13	SHIELD - spring (outer)	63565-A	X	X	X	1	41	LEAD - ground	A-59031	X	X	X	1
14	PULLEY and Cup Assembly	A-64446	X	X	X	1	42	CORE - coil	63630	X	X	X	1
15	Includes: BUSHING - spring lock	64400	X	X	X	1	43	SCREW - core	64021	X	X	X	4
16	LOCK - spring	64049-A	X	X	X	1	44	SCREW - coil clip	58872	X	X	X	1
17	WASHER - retaining	58763	X	X	X	1	45	CLIP - coil retaining	63726	X	X	X	1
18	SCREW - hex 10-32 x 1/2	80648	X	X	X	1	46	COIL - ignition	63625	X	X		1
19	NUT - hex, 3/8-24	81124	X	X	X	1	46	COIL - ignition	63998-A			X	1
20	WASHER - lock, 3/8	83102	X	X	X	1	47	SCREW - condenser clamp	64022			X	1
21	WASHER - flat, 3/8	84010-1	X	X	X	1	48	SWITCH & CONDENSER	65762			X	1
22	NUT - lock, 10-32	81109-2	X	X	X	2	49	WASHER - external tooth, #8	83029			X	1
23	SCREEN - air	64137-A	X	X	X	1	50	CONDENSER - ignition	63626	X	X		1
24	STUD - pawl	58757-B	X	X	X	2	51	CLAMP - condenser	63627	X	X	X	1
25	PAWL - starter	58756	X	X	X	2	52	RETAINER - felt	63628	X	X	X	1
26	WASHER	58851	X	X	X	2	53	SCREW	55411	X	X	X	3
27	SPRING - pawl	58758	X	X	X	2	54	GASKET - cover	63316	X	X	X	1
28	ROTOR	63406	X	X		1	55	COVER - breaker box	63317	X	X	X	1
29	ROTOR	65837			X	1	56	TERMINAL BLOCK GROUP	A-58934	X	X	X	1
30	CAP - dust	64002			X	1	57	SPRING - cover (clip)	76413	X	X		1
	SCREW - pan, 8-32 x 1/2	65763			X	2	58	POINT SET - w/felts	A-63631	X	X		1
							59	Includes: WASHER - point	28028	X	X	X	1
							60	CLIP - post	28008	X	X		1
							61	SCREW GROUP - points	76421	X	X		1

\* Denotes new parts.

ALWAYS FURNISH MODEL AND SERIAL NUMBER WHEN ORDERING PARTS.



# HOMELITE XL-901, XL-903, & XL-904 CHAIN SAW

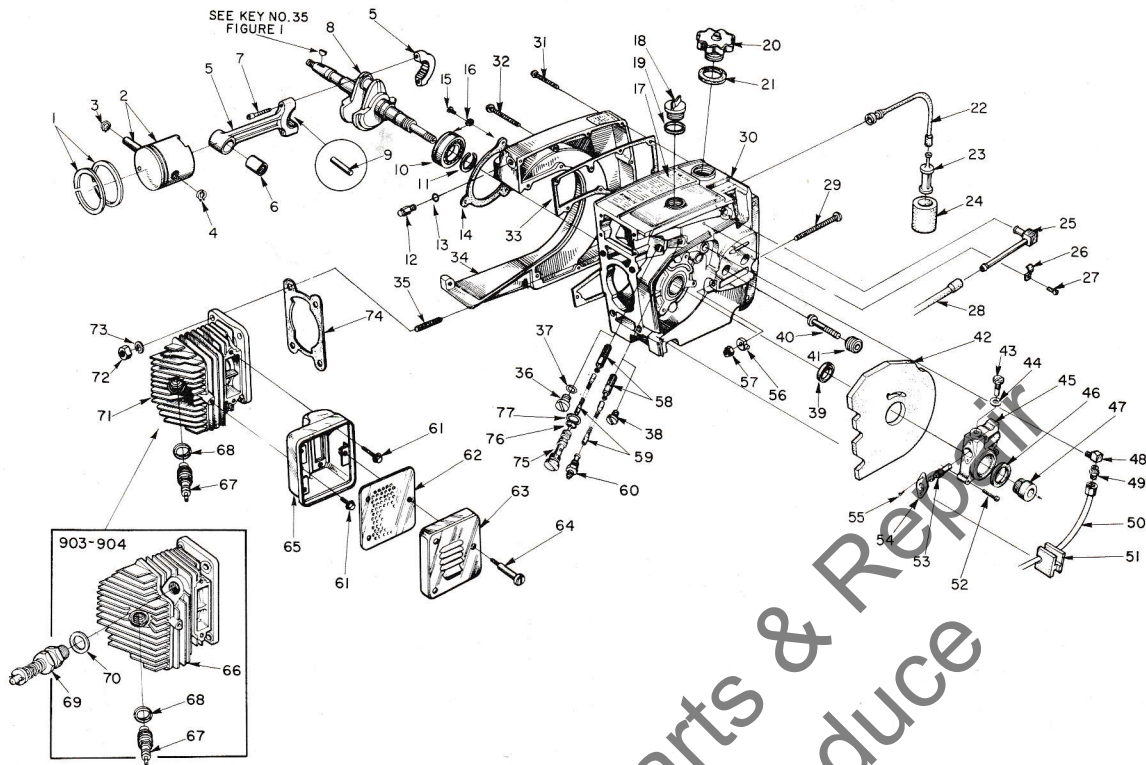


FIGURE 2

No.	Description	Part No.	XL 901	XL 903	XL 904	Qty.	No.	Description	Part No.	XL 901	XL 903	XL 904	Qty.
1	RING - piston (2" bore)	55038	X			2	35	STUD	55871	X	X	X	4
	RING - piston (2 1/16" bore)	55537		X	X	2	36	CAP	63115	X	X	X	1
2	PISTON & PIN - 2" bore	A-63780-A	X			1	37	WASHER	58138	X	X	X	1
	PISTON & PIN - 2 1/16" bore	A-63781-A		X	X	1	38	PLUG - pipe	28097	X	X	X	1
3	Includes: RING - retaining	55095	X	X	X	1	39	SEAL	58688-A	X	X	X	1
4	RING - retaining	64742	X	X	X	1	40	STUD - guide bar	59764-A	X	X	X	2
5	ROD - connecting	A-63309	X	X	X	1	41	INSERT - threaded	59896-A	X	X	X	2
6	Includes: BEARING - needle	59351	X	X	X	1	42	SHIELD - saw dust	A-64715	X	X	X	1
7	SCREW - socket cap, 8-32 x 9/16	80805	X	X	X	2	43	SCREW - cam	59737		X	X	1
8	CRANKSHAFT	59625-1	X			1	44	GASKET	59736	X	X	X	1
	CRANKSHAFT	59625-2		X	X	1	45	HOUSING - automatic oiler	A-63461-B		X	X	1
9	BEARING - needle (28 rollers)	A-64621	X	X	X	1	46	SEAL - felt	59926		X	X	1
10	BEARING - ball	58190-S	X	X	X	1	47	GEAR - worm	59675		X	X	1
11	RING - retaining	58319-A	X	X	X	1	48	CONNECTOR - elbow	31734	X	X	X	1
*12	VALVE - check	A-65608	X	X	X	1	*49	FITTING - straight	65696	X	X	X	1
*13	"O" RING	65613	X	X	X	1	*50	LINE - oil	A-65705	X	X	X	1
14	GASKET - sealing	63319	X	X	X	1	*51	GROMMET - oil line	65357	X	X	X	1
15	SCREW - bearing retaining	59704	X	X	X	2	52	SCREW - fil., 8-32 x 3/4	80248		X	X	3
16	WASHER - lock	59705	X	X	X	2	53	PLUNGER - gear	63760		X	X	1
17	DECAL - caution	64144	X	X	X	1	54	BEARING - flanged	59719		X	X	1
18	CAP - oil (vented)	A-64310	X	X	X	1	55	SCREW - pan, 4-40 x 1/4	80919		X	X	2
19	Includes: GASKET	56607	X	X	X	1	56	PIN - guide bar adjusting	58783-1	X	X	X	1
	VALVE - vent (not shown)	63718	X	X	X	1	57	NUT - lock, 1/4-20	81108	X	X	X	1
*20	CAP - fuel	A-65809	X	X	X	1	58	FILTER - oil	A-64293	X		X	1
21	Includes: GASKET	58957	X	X	X	1		FILTER - oil	A-64293		X	X	2
*22	LINE - flexible fuel	65593	X	X	X	1	59	LINE - oil pickup	63605	X		X	1
23	FILTER - fuel	A-59251	X	X	X	1		LINE - oil pickup	59000		X	X	2
24	Includes: FILTER	59253	X	X	X	1	*60	CONNECTOR - oil filter	65695	X	X	X	1
*25	LINE - fuel	A-65596	X	X	X	1	61	SCREW - hex, 12-24 x 5/8	80978	X	X	X	3
*26	CLAMP - fuel line	65597-1	X	X	X	1	62	BAFFLE - muffler	63521-A	X	X	X	1
27	SCREW - pan, 6-32 x 5/16	80605	X	X	X	1	63	CAP - muffler	63520-3	X	X	X	1
*28	LINE - fuel	65718	X	X	X	1	64	SCREW - shoulder	63855-A	X	X	X	3
29	SCREW - guide bar adjusting	63367	X	X	X	1	65	BODY - muffler	A-63535-1A	X	X	X	1
*30	CRANKCASE & TANK	A-65879	X	X	X	1	*66	CYLINDER - 2 1/16" bore	65605-1		X	X	1
	Includes: GASKET (not shown)	58338	X	X	X	1	67	SPARK PLUG	63547-S	X	X	X	1
	CAP (not shown)	58339	X	X	X	1	68	Includes: GASKET	25038	X	X	X	1
31	SCREW - fil. hd., 8-32 x 5/8	82146	X	X	X	6	*69	VALVE - decompression	A-65883		X	X	1
32	SCREW - fil. hd., 8-32 x 1 3/4	82147	X	X	X	9	70	Includes: WASHER - copper	65825		X	X	1
33	GASKET - fuel tank	65391	X	X	X	1	71	CYLINDER - 2" bore	63012-2	X		X	1
*34	COVER - fuel tank	64825-4	X	X	X	1	72	NUT - hex, 1/4 x 28	81065-2	X	X	X	4
							73	WASHER - lock, 1/4	83009	X	X	X	4
							74	GASKET - cylinder	63778	X		X	1
							75	TUBE - oil line	63452-A		X	X	1
							76	"O" RING	58406		X	X	1
							77	GASKET - oil line tube	63751		X	X	1

\* Denotes new parts.

ALWAYS FURNISH MODEL AND SERIAL NUMBER WHEN ORDERING PARTS.



# HOMELITE XL-901, XL-903, & XL-904 CHAIN SAW

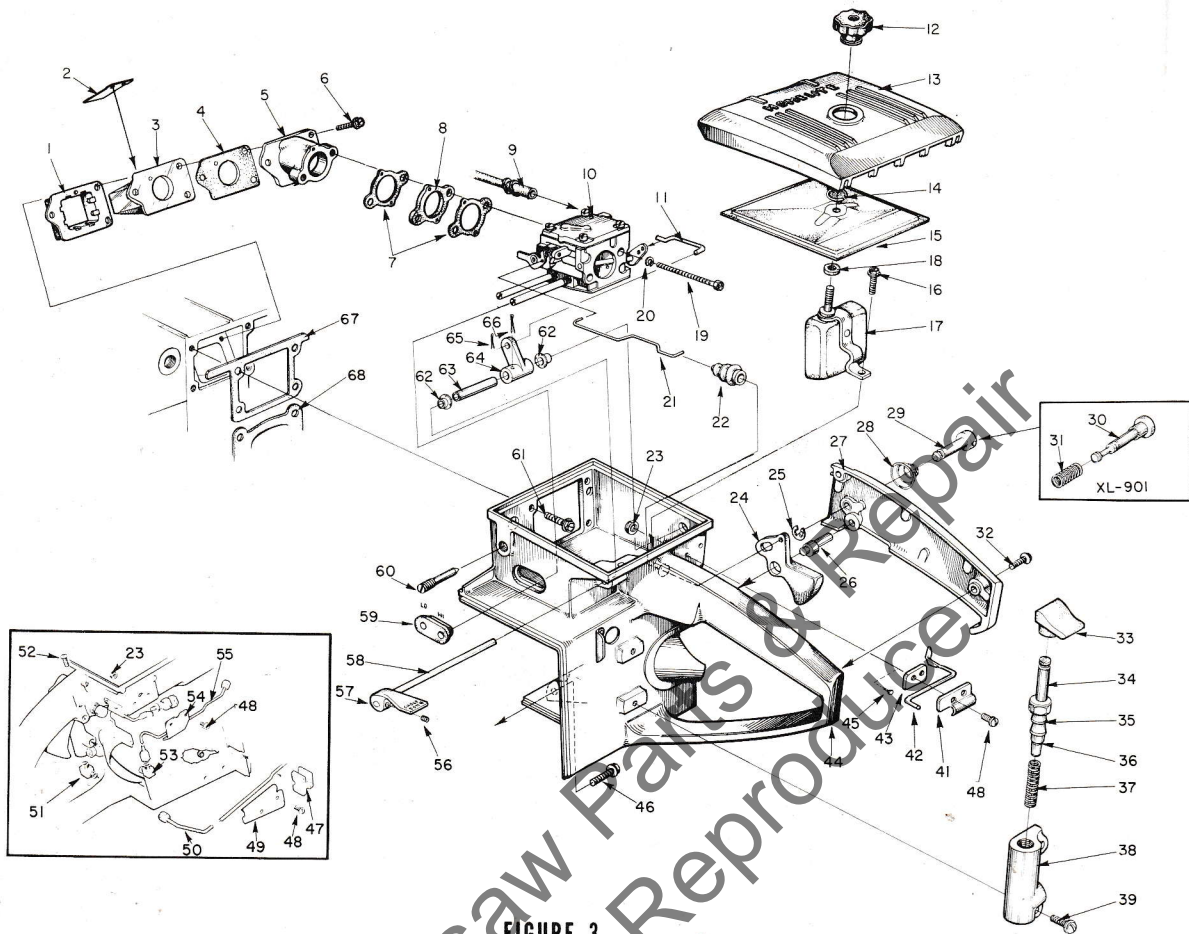


FIGURE 3

No.	Description	Part No.	XL 901	XL 903	XL 904	Qty.	No.	Description	Part No.	XL 901	XL 903	XL 904	Qty.
1	RETAINER	63370	X	X	X	1	33	BUTTON	63622	X	X	X	1
2	VALVE - reed	63166	X	X	X	4	*34	PLUNGER - oil pump	A-57834-16	X	X	X	1
3	SEAT - reed valve	63371-A	X	X	X	1	35	Includes: "O" RING - shaft	59074	X	X	X	1
4	GASKET - seat	65483	X	X	X	1	36	"O" RING - plunger	74388	X	X	X	1
5	SPACER - reed valve seat	63019-1A	X	X	X	1	37	SPRING - plunger	59293	X	X	X	1
6	SCREW - shoulder	65489	X	X	X	3	*38	BODY - oil pump	63343-5	X	X	X	1
7	GASKET - carburetor	63254	X	X	X	2	39	SCREW - hex, 8-32 x 7/8	80568	X	X	X	2
8	SPACER - carburetor	63256	X	X	X	1	*41	CLAMP - lever	65821-1	X	X	X	1
*9	LINE - fuel	65718	X	X	X	1	*42	LEVER - poppet valve	65630	X	X	X	1
10	CARBURETOR	A-65578	X	X	X	1	*43	PLATE	65629-1	X	X	X	1
*11	LINK - choke	65508	X	X	X	1	*44	HANDLE - throttle	A-65881	X	X	X	1
12	NUT - cover mounting	A-63582-A	X	X	X	1	*45	Includes: PLUG - accordian	65889	X			2
13	COVER - air filter	63634-1	X	X	X	1	46	SCREW - hex, 12-24 x 7/8	80891	X	X	X	1
14	RING - retainer	58319-A	X	X	X	1	*47	GROMMET - oil line	65357	X	X	X	1
15	FILTER ELEMENT - air	63341	X	X	X	1	48	SCREW - pan, 6-32 x 3/8	80571	X			4
16	SCREW - hex, 12-24 x 1/2	80821	X	X	X	1		SCREW - pan, 6-32 x 3/8	80571		X	X	6
17	DEFLECTOR - air, w/bracket	A-63593	X	X	X	1	*49	CLAMP - oil line	65513-1	X	X	X	1
18	Includes: GASKET - mounting nut	58392-1	X	X	X	1	*50	LINE - oil	A-65682	X	X	X	1
19	SCREW - hex, 10-32 x 2	80965	X	X	X	2	*51	VALVE - check	A-65515	X	X	X	1
20	WASHER - lock, No. 10	83046	X	X	X	2	*52	SCREW - fil, 8-32 x 5/8	80023-2	X	X	X	1
21	ROD - throttle	63266	X	X	X	1	*53	VALVE - check	A-65502	X	X	X	1
22	BOOT - throttle rod	58348	X	X	X	1	*54	CLAMP - oil line	65660-1	X	X	X	1
23	NUT - lock, 6-32	81126	X			4	*55	LINE - oil	A-65705	X	X	X	1
	NUT - lock, 6-32	81126		X	X	6	*56	SCREW - soc., 8-32 x 5/16	80701	X	X	X	1
*24	TRIGGER - throttle	65745	X	X	X	1	*57	LEVER - choke	65490-2	X	X	X	1
25	RING - retaining	58409	X			1	*58	SHAFT - choke	65510	X	X	X	1
*26	PIN - throttle lock adj.	65719	X	X	X	1	59	GROMMET	58858	X	X	X	1
*27	COVER - throttle handle	A-65882	X	X	X	1	60	SCREW - idle adjustment	63369	X	X	X	1
	Includes: BUSHING - throttle lock (not shown)	59064	X			1	61	SCREW - hex, 12-24 x 5/8	80676	X	X	X	4
	BUSHING - throttle lock (not shown)	65878		X	X	1	62	BUSHING - throttle handle	63400	X	X	X	2
*28	SPRING - lock	65714		X	X	1	*63	SLEEVE - spacer	65716	X	X	X	1
*29	PIN - throttle lock	65822		X	X	1	*64	BELL CRANK - choke	65511	X	X	X	1
30	PIN - throttle lock	58924	X			1	65	PIN - cotter	86301	X	X	X	1
31	SPRING - lock	58405	X			1	66	PIN - cotter	86324	X	X	X	1
32	SCREW - pan, 8-32 x 1/2	80560	X	X	X	2	67	GASKET - throttle handle	63779-A	X	X	X	1
							68	GASKET - cylinder	63778	X	X	X	1

\* Denotes new parts.

ALWAYS FURNISH MODEL AND SERIAL NUMBER WHEN ORDERING PARTS.



# HOMELITE XL-901, XL-903, & XL-904 CHAIN SAW

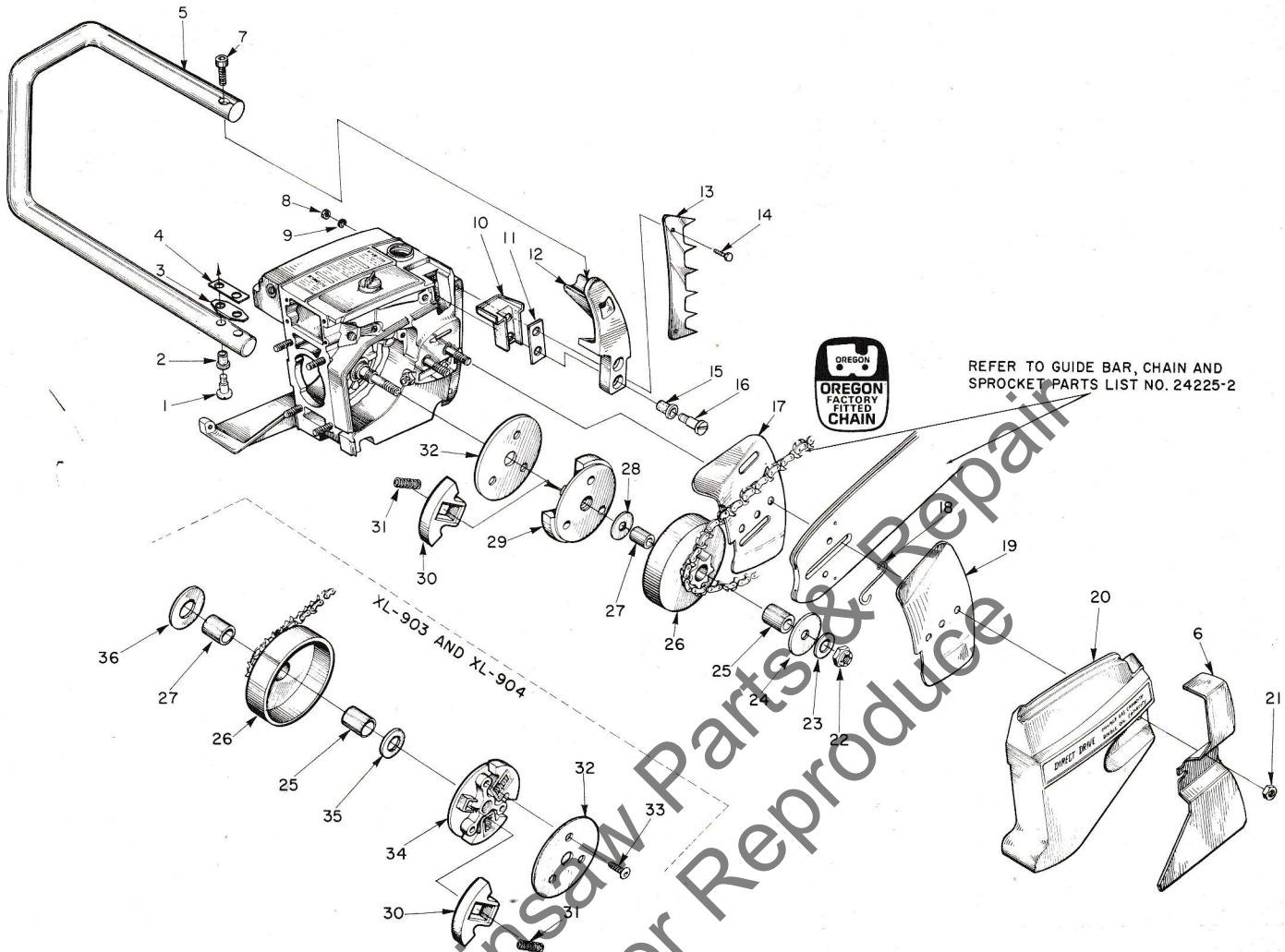


FIGURE 4

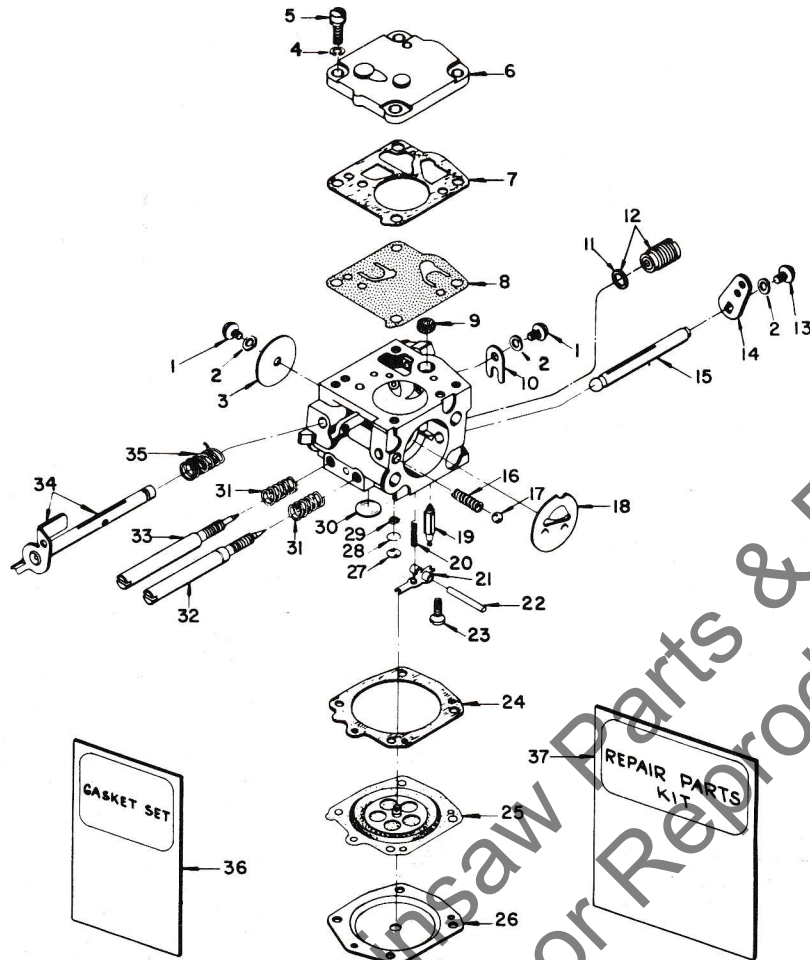
No.	Description	Part No.	XL 901	XL 903	XL 904	Qty.	No.	Description	Part No.	XL 901	XL 903	XL 904	Qty.
* 1	SCREW - shoulder	65520	X	X	X	2	*16	SCREW - shoulder	65521	X	X	X	2
* 2	GROMMET - handle bar	65518	X	X	X	2	17	PLATE - guide bar (inner)	58781	X	X	X	1
* 3	PLATE - handle bar	65599	X	X	X	1	18	SPRING - guide bar	64448	X	X	X	1
* 4	SPACER - handle bar	65542	X	X	X	1	19	PLATE - guide bar (outer)	58782	X	X	X	1
* 5	HANDLE BAR - flush cut	A-65883-3	X	X	X	1	20	COVER - drivecase	63009-2	X	X	X	1
* 6	KIT - full wrap around optional	A-65894	X	X	X	1	21	NUT - 5/16-18	81196	X	X	X	2
	Includes: HANDLE BAR - (wrap around)	A-65814-2	X	X	X	1	22	NUT - lock, 3/8-24	81192	X			1
	GUARD-CHAIN	64867-1	X	X	X	1	23	WASHER - flat, 3/8	84010-1	X			1
	BRACKET - handle bar	65607-5	X	X	X	1	24	WASHER - thrust (outer)	58926	X			1
* 7	KIT - 3/4 wrap around optional	A-65902	X	X	X	1	25	BEARING - needle	64124	X	X	X	1
	Includes: HANDLE BAR	A-65900	X	X	X	1	26	SPROCKET & DRUM					
	BRACKET	65607-5	X	X	X	1		Standard - 3/8" pitch, 7 tooth	A-65884	X	X	X	1
	BRACE	63660	X	X	X	1		Optional - 3/8" pitch, 8 tooth	A-65885	X	X	X	1
	SCREW - hex, 12-24 x 3/4	80867	X	X	X	1		.404" pitch, 7 tooth	A-65886	X	X	X	1
7	SCREW - socket 1/4-20 x 1	80428	X	X	X	1		.404" pitch, 8 tooth	A-65887	X	X	X	1
8	NUT - 12-24	81068	X	X	X	2	27	RACE - inner	64129		X	X	1
9	WASHER - lock, No. 12	83056	X	X	X	2	*	RACE - inner	65746	X			1
*10	MOUNT - shock	65509	X	X	X	1	28	WASHER - thrust (inner)	58833	X			1
*11	PLATE - handle bar bracket	65598	X	X	X	1	29	PLATE - clutch	63053-1	X			1
*12	BRACKET - handle bar (flush cut)	65607-2	X	X	X	1	30	SHOE - clutch	64569	X	X	X	3
13	BUMPER - spiked (optional)	63549	X	X	X	1	31	SPRING - clutch	65842	X	X	X	3
14	SCREW - hex, 12-24 x 3/4	80867	X	X	X	2	32	COVER - clutch	63051-1	X	X	X	1
*15	GROMMET	65519	X	X	X	2	33	SCREW - hex, 1/4-20 x 1/2	64471		X	X	3
							34	PLATE - clutch	63053-2		X	X	1
							35	WASHER - thrust (outer)	63462		X	X	1
							36	WASHER - thrust (inner)	63463		X	X	1

\* Denotes new parts.

① Wrap around Handle Bar and special Bracket also requires #63660 Brace (not shown) mounted on drivecase cover. Attach Brace to Handle Bar with one #80867 screw.

ALWAYS FURNISH MODEL AND SERIAL NUMBER WHEN ORDERING PARTS.

# HOMELITE XL-901, XL-903, & XL-904 CHAIN SAW



Assembly Number  
A-65578

TILLOTSON MODEL HS-56A

No.	Part No.	Description	Qty.	No.	Part No.	Description	Qty.
1	80264	† SCREW - rd. hd., 4-40 x 3/16	2	19	59717	† NEEDLE - inlet	1
2	83008-1	† WASHER - lock, #4	4	20	55759	† SPRING - control lever	1
3	25050	SHUTTER - throttle	1	21	59716	† LEVER - inlet control	1
4	83024	WASHER - lock, #6	1	22	58977	† PIN - control lever fulcrum	1
5	80275	SCREW - fil. hd., 6-32 x 3/8	4	*23	65798	† SCREW - oval hd., 4-40 x 1/4	1
6	58975	COVER - fuel pump diaphragm	1	24	58978	GASKET - main diaphragm	1
7	58981	GASKET - pump diaphragm	1	25	58988	† DIAPHRAGM - main control	1
8	58980-R	† DIAPHRAGM - fuel pump	1	26	58979	COVER - main diaphragm	1
9	58974	† SCREEN - fuel inlet	1	27	58994	† PLUG - extension (small)	1
10	58982	CLIP - throttle shaft retaining	1	28	57819	RING - retaining	1
11	74060	GASKET	1	29	59500	SCREEN - channel	1
*12	A-65801	VALVE - governor	1	30	58991	† PLUG - extension (large)	1
13	80591	SCREW - rd. hd., 4-40 x 1/4	5	31	73075	† SPRING - adjustment needle	2
*14	65800	LEVER - choke	1	32	63676	† SCREW - main adjustment	1
*15	65799	SHAFT - choke	1	33	63677	† SCREW - idle adjustment	1
16	73264	SPRING - choke friction	1	34	A-63345	SHAFT - throttle w/lever	1
17	25527	BALL - check	2	35	59460	† SPRING - throttle opening	1
18	58984	SHUTTER - choke	1	*36	65895	† GASKET SET	1
				*37	65896	REPAIR KIT	1

† Indicates contents of Repair Kit.

\* Denotes new parts.



# HOMELITE XL-901, XL-903, & XL-904 CHAIN SAW

## ACCESSORIES

SPARK ARRESTOR ASSEMBLY A-63540-A

### SPECIAL TOOLS-available on order

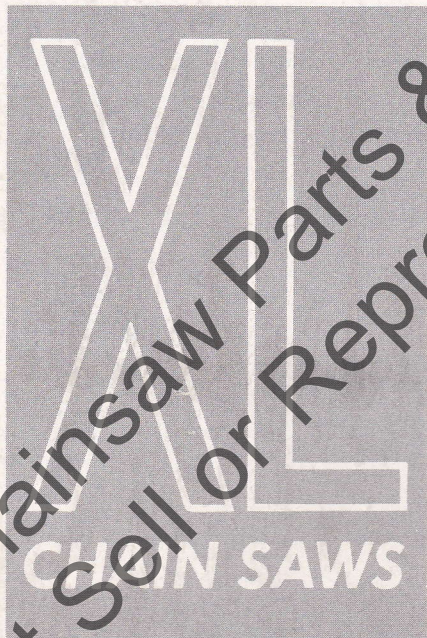
(★) XL-901 only (●)XL-903-904 only

Part No.	Description	Part No.	Description
A-23937-B	COMBINATION WRENCH	A-23841-A	WRENCH - insert (guide bar stud)
22828	PLIERS - piston snap ring	A-23960	PULLER - rotor
23528	WRENCH - socket screw (conn. rod)	●23420	PLUG - bearing installation (sprocket)
23955	PLUG - bearing installation (conn. rod)	23956	PLUG - bearing and seal installation (back plate)
★A-23137	JACKSCREW	A-23962	REMOVER - bearing (back plate)
●A-23965	JACKSCREW	23846-2	ANVIL - bearing disassembling (back plate)
★23136-2	BODY - jackscrew	24006-1	PLATE - crankshaft aligning
●23136-1	BODY - jackscrew	★23968	ANVIL - roller bearing assembling
★22820-3	COLLAR - bearing	24280	DRIVER - hand ("Poqidriv")
●22820-4	COLLAR - bearing	Paint	
23846-1	ANVIL - crankshaft installation	22771	SPRAY CAN - red
★23759	SLEEVE - seal protecting (crankcase)	23318	SPRAY CAN - blue
●23971	SLEEVE - seal protecting (crankcase)	23560	SPRAY CAN - white
23972	SLEEVE - seal installation (crankcase)	23343	SPRAY CAN - green
23957	PLUG - seal installation (crankcase)	22772	SPRAY CAN - black
23987	SHIM - point gap		
A-23934	WRENCH - clutch		

Leon's Chain Saw Parts & Repair  
Do Not Sell or Reproduce



Leon's Chainsaw Parts & Repair  
Do Not Sell or Reproduce



# HOMELITE

A Textron DIVISION • PORT CHESTER, NEW YORK

