

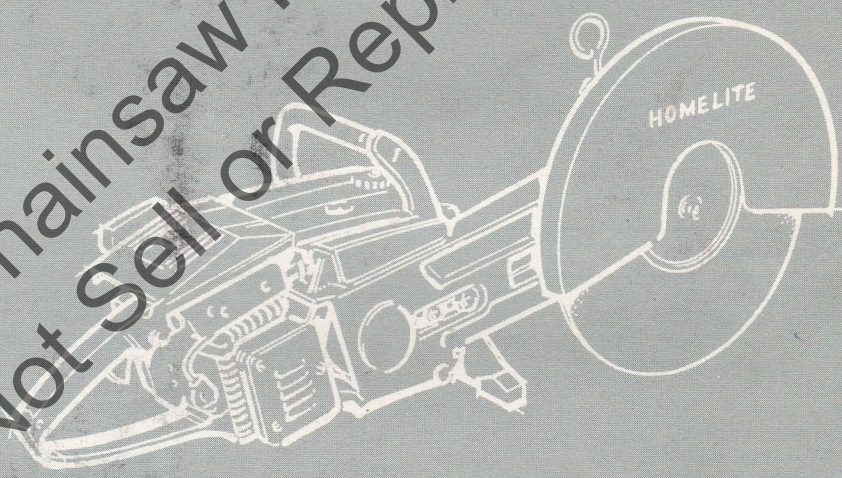
PRICE .25

HOMELITE

XL-88

MULTI-PURPOSE

Leon's Chainsaw Parts & Repair
Do Not Sell or Reproduce



PARTS LIST

PART NO. 24104
1st Edition 767
Printed in U.S.A.

HOMELITE XL-88 MULTI-PURPOSE SAW

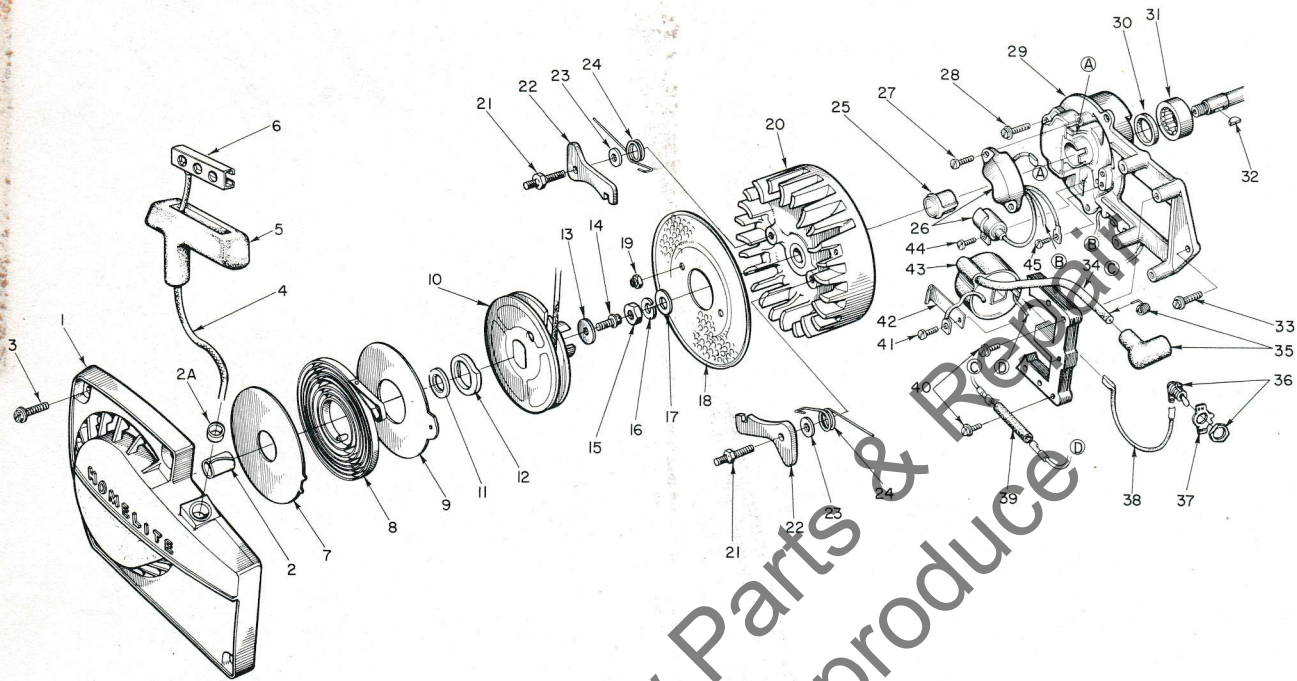


FIGURE 1

No.	Description	Part No.	Qty.	No.	Description	Part No.	Qty.
1	STARTER HOUSING	A-64504	1	24	SPRING - starter pawl	58758	2
2	Includes: BUSHING	64443	1	25	CAP - dust	64002	1
2A	BUSHING - rope	59313	1	26	SWITCH AND CONDENSER GROUP	64000	1
3	SCREW - hex hd. spinlock, #12-24 x 5/8"	80676	4	27	SCREW - pan hd., 8-32 x 1/2	80560	2
4	ROPE - starter	58806	1	28	SCREW - pan hd., 12-24 x 5/8"	80707	3
5	GRIP - starting rope	58915	1	29	PLATE - back & trigger	A-64258	1
6	INSERT - rope retaining	58847	1	30	Includes: SEAL	58688-A	1
7	SHIELD - spring (inner)	63566	1	31	BEARING - roller	63195	1
8	SPRING - rewind	63268	1	32	KEY	75078	1
9	SHIELD - spring (outer)	63565-A	1	33	SCREW - hex hd., 12-24 x 11/16"	80751	1
10	PULLEY & CUP ASSEMBLY	A-64446	1	34	LEAD - high tension	63632	1
11	Includes: BUSHING - spring lock	64400	1	35	TERMINAL - high tension	A-33055	1
12	LOCK - spring	64049-A	1	36	SWITCH w/nut	A-57650-3	1
13	WASHER - retaining	58763	1	37	PLATE - "ON-OFF"	72085-A	1
14	SCREW - hex hd., #10-32 x 1/2"	80648	1	38	LEAD - ground	A-59031	1
15	NUT - hex jam 3/8 - 24	81124	1	39	SLEEVE - insulating	64540	1
16	WASHER - lock 3/8	83102	1	40	SCREW - core assembly	64021	4
17	WASHER - flat 3/8	84010-1	1	41	SCREW - coil grounding	58872	1
18	SCREEN - starter	64137-A	1	42	CLIP - coil retaining	63726	1
19	NUT - flexloc #10-32	81109-2	2	43	COIL ASSEMBLY	63998	1
20	ROTOR - magneto	64001	1	44	SCREW - condenser clamp	64022	1
21	STUD - shoulder	58757-B	2	45	SCREW - pan (switch grounding)	76421	1
22	PAWL - starter	58756	2	46	CORE COIL	63630	1
23	WASHER	58851	2				

HOMELITE XL-88 MULTI-PURPOSE SAW

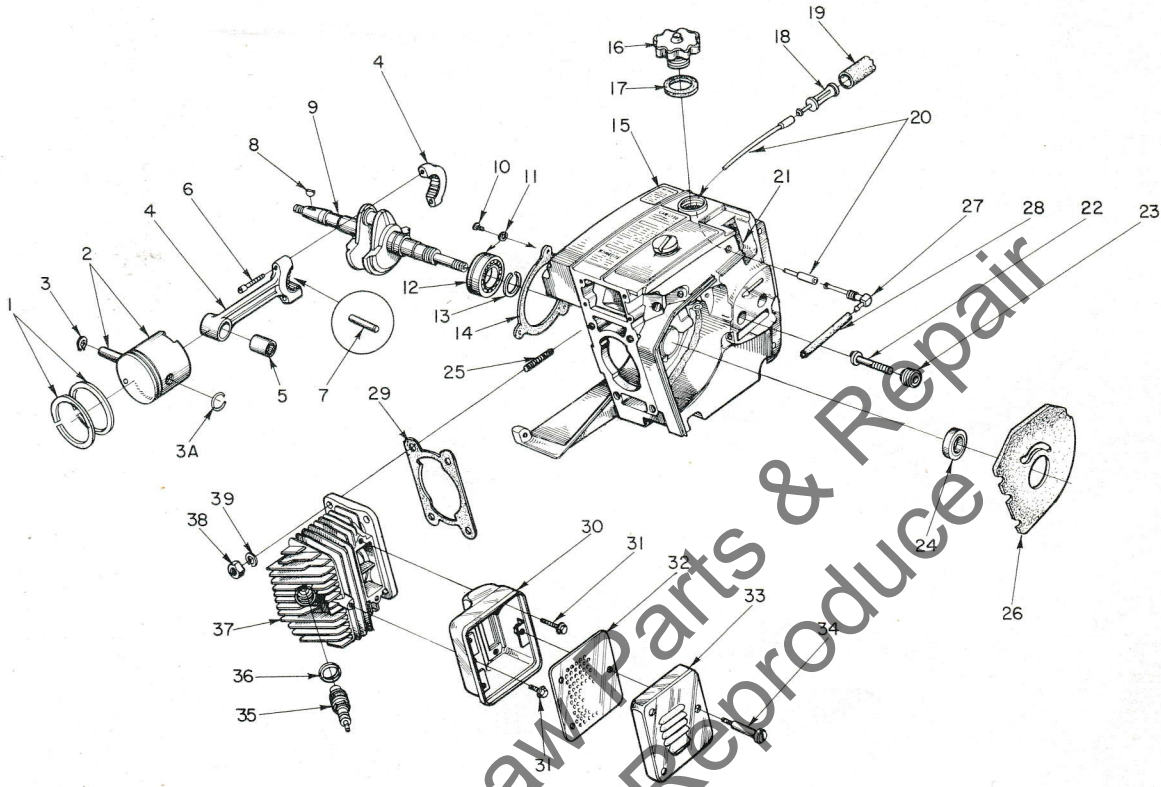


FIGURE 2

No.	Description	Part No.	Qty.	No.	Description	Part No.	Qty.
1	RING - piston	55537	2	20	LINE - flexible	55805	1
2	PISTON & PIN 2 1/16" bore	A-63781-A	1	21	CRANKCASE	A-64710	1
3	Includes: RING - retaining	55095	1	22	Includes: STUD - guide bar	63861	2
3A	RING - retaining	64742	1	23	INSERT - threaded	59896	2
4	ROD - connecting	A-63309	1	24	SEAL	58688-A	1
5	Includes: BEARING - needle	59351	1	25	STUD	55871	4
6	SCREW - socket hd., 8-32 x 9/16"	80805	2	26	SHIELD - dust	A-64715	1
7	BEARING - needle (set 28)	A-64621	1	27	FITTING - elbow	63297-A	1
8	KEY	75078	1	28	LINE - fuel	63335-A	1
9	CRANKSHAFT	59625-1	1	29	GASKET - cylinder	63778	1
10	SCREW - bearing retaining	59704	2	30	BODY - muffler	A-63535-1A	1
11	WASHER - lock	59705	2	31	SCREW - hex hd., 12-24 x 5/8"	80978	3
12	BEARING - ball	58190-S	1	32	BAFFLE - muffler	63521-A	1
13	RING - retaining	58319-A	1	33	CAP - muffler	63520-1	1
14	GASKET - crankcase	63319	1	34	SCREW - shoulder	63855-A	3
15	DECAL - caution	64144	1	35	SPARK PLUG	63547-S	1
16	CAP ASSEMBLY - fuel filler	A-64140-A	1	36	Includes: GASKET	25038	1
17	Includes: GASKET	58957	1	37	CYLINDER	63012-1	1
18	FILTER ASSEMBLY	A-59251	1	38	NUT - hex (1/4-28)	81065-2	4
19	Includes: FILTER	59253	1	39	WASHER - lock (1/4")	83009	4

HOMELITE XL-88 MULTI-PURPOSE SAW

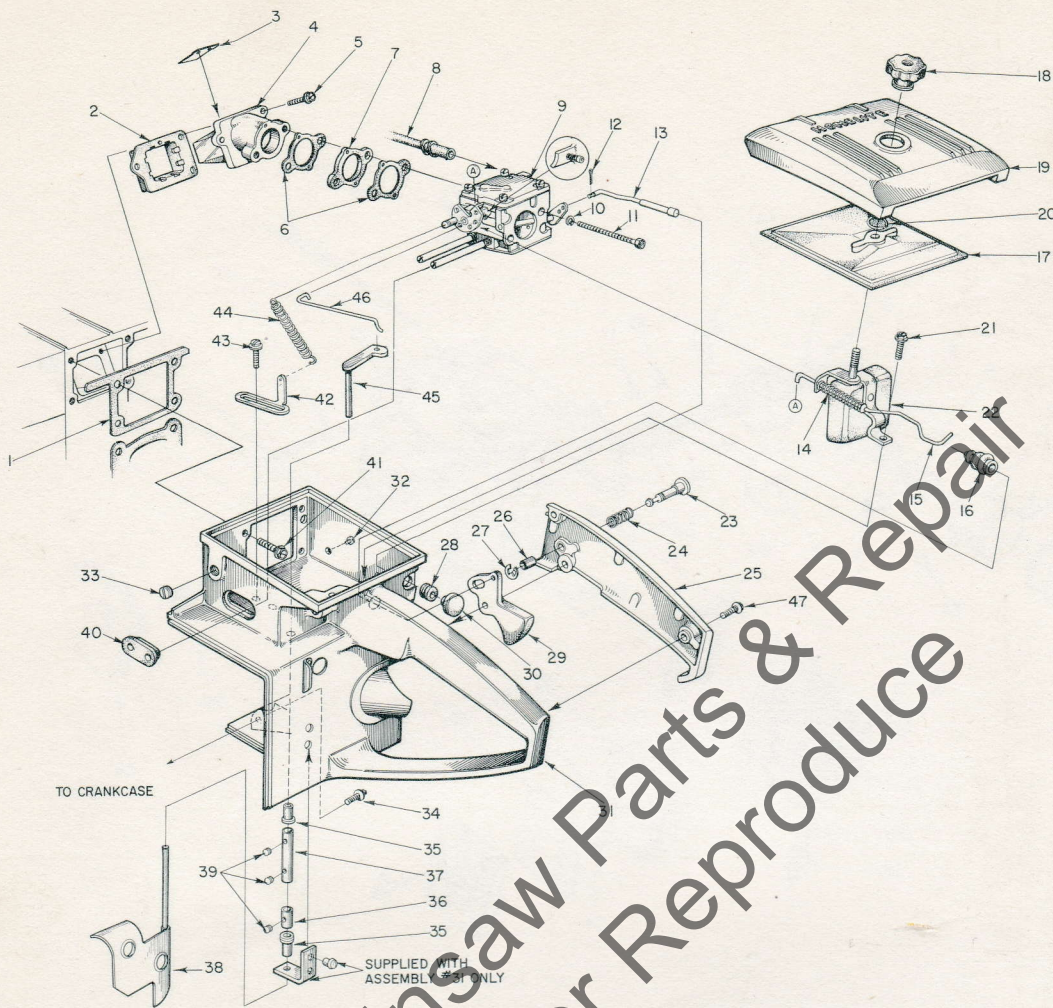


FIGURE 3

No.	Description	Part No.	Qty.	No.	Description	Part No.	Qty.
1	GASKET - throttle handle	63779	1	26	Includes: BUSHING - nylon	59064	1
2	RETAINER - reed valve	63370	1	27	RING - retainer	58409	1
3	REED - valve	63166	4	28	GROMMET	58362	1
4	SEAT - reed valve	A-63907	1	29	TRIGGER	58859	1
5	SCREW	63709	3	30	BUTTON	57289-1	1
6	GASKET - carburetor	63254	2	31	HANDLE - throttle	A-64717	1
7	SPACER - carburetor	63256	1	32	Includes: PLUG	63847	2
8	LINE - fuel	63335-A	1	33	PLUG - pipe	28097	1
9	CARBURETOR See Note 1	A-64465	1	34	SCREW - hex hd., spinlock, 12-24 x 7/8	80891	1
10	WASHER - lock (#10)	63046	2	35	BUSHING - air vane shaft	64547	2
11	SCREW - hex hd., 10-32 x 2"	80965	2	36	COLLAR	64552	1
12	PIN - cotter	86324	1	37	COUPLING	64553	1
13	ROD - chike	A-63337	1	38	VANE & SHAFT	A-64549	1
14	SPRING - return	64562	1	39	SCREW - set, 4-40 x 1/8"	80893	3
15	ROD - throttle	A-64561	1	40	GROMMET	64664	1
16	BOOT - throttle rod	58348	1	41	SCREW - hex hd., spinlock, 12-24 x 5/8"	80676	4
17	FILTER ELEMENT - air	A-64828	1	42	PLATE - speed adjusting	64548	1
18	NUT - mounting	A-63582-A	1	43	SCREW - pan hd., spinlock, 6-32 x 3/16	80930	2
19	COVER - air filter	63634-1	1	44	SPRING - governor	64501	1
20	RING - retainer	58319-A	1	45	ARM & SHAFT ASSEMBLY	A-64554	1
21	SCREW - hex hd. spinlock, 12-24 x 1/2"	80821	1	46	LINK - carburetor	64558	1
22	DEFLECTOR - air, w/bracket	A-64563	1	47	SCREW - pan hd., spinlock, 8-32 x 1/2	80560	2
23	PIN - throttle lock	58924	1				
24	SPRING - throttle lock	58405	1				
25	COVER - throttle handle	A-63325-1	1				

Note 1 - Refer to Carburetor Parts List 24105.

HOMELITE XL-88 MULTI-PURPOSE SAW

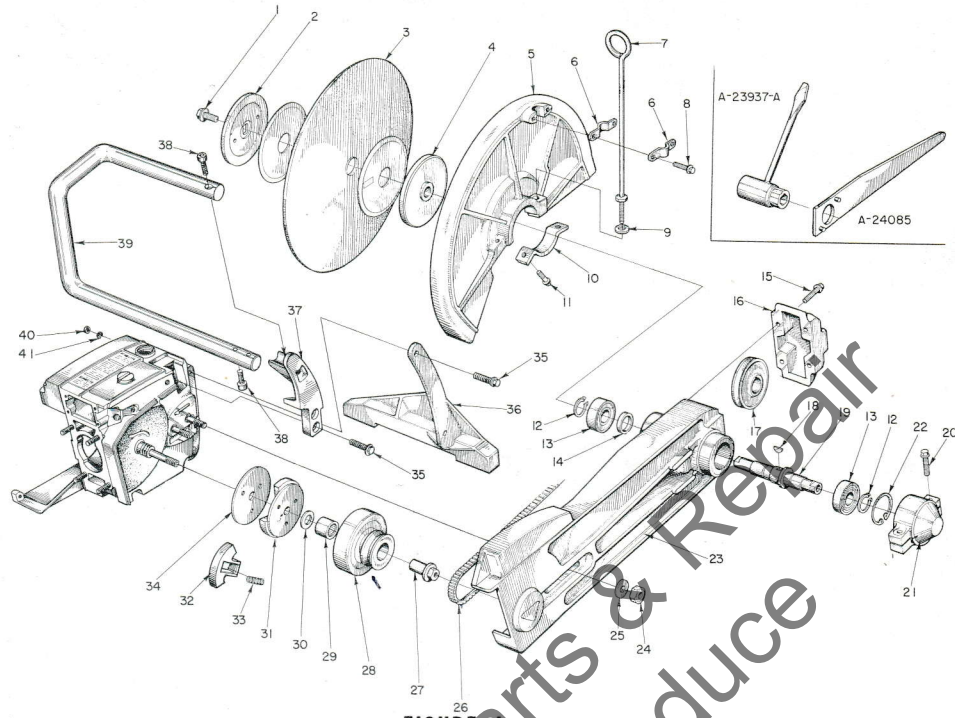


FIGURE 1

No.	Description	Part No.	Qty.	No.	Description	Part No.	Qty.
1	BOLT - blade	59224	1	22	RING - retaining	31080	1
2	WASHER - outer	64113-A	1	23	ARM - blade	A-64745	1
3	WHEEL - masonry	64596-S	1	24	NUT - hex 5/16-18	81196	2
	BLADE - saw	64595	1	25	WASHER - flat 5/16	84032	2
	WHEEL - metal	64597-S	1	26	BELT - drive	64498	1
4	WASHER - inner	64114-A	1	27	RACE - inner flanged	64332	1
5	GUARD - blade	64095-2	1	28	PULLEY - bearing and drum ass'y	A-64104	1
6	CLAMP	64383	2	29	Includes: BEARING - needle	55204	1
7	BOLT - eye	A-64382	1	30	WASHER - thrust	58833	1
8	SCREW - hex hd., spinlock, 1/4-20 x 1/2"	80681	2	31	PLATE - clutch	63053-1	1
9	WASHER - flat, 1/4"	84092	1	32	SHOE - clutch	63052	3
10	CLAMP - blade guard	64651	1	33	SPRING - clutch	63034	3
11	SCREW - hex hd., spinlock, 1/4-20 x 13/16"	80573	1	34	COVER - clutch	63051-1	1
12	RING - retaining	59128	2	35	SCREW - hex hd., spinlock, 12-24 x 3/4"	80867	4
13	BEARING - ball	64570-S	2	36	SUPPORT - saw	64347-2	1
14	SPACER	64121	1	37	BRACKET - handle bar	63011-3	1
15	SCREW - hex hd., spinlock, 12-24 x 7/8"	80891	4	38	SCREW - socket hd., 1/4-20 x 1"	80428	3
16	CAP - blade arm	64094-2	1	39	BAR - handle	A-63485-2A	1
17	PULLEY - driven	64099	1	40	NUT - hex, 12-24	81068	2
18	KEY	66612	1	41	WASHER - lock	83056	2
19	SHAFT - blade	64119	1		Accessories - available at your Homelite Dealer		
20	SCREW - hex hd., spinlock, 12-24 x 1"	80864	2	64598	Goggles - safety		
21	GUARD - shaft	64128-2	1	64599	Fuel Can - safety		
				23394	Engine Oil - 1/2 pt. can		

SPECIAL TOOLS - Available on Order

A-24085	WRENCH - combination spanner and belt adjusting	A-23960	BRACKET ASSEMBLY - rotor remover
22828	PLIERS - retaining ring (piston pin)	23956	PLUG - roller bearing and seal assembling (back plate)
23528	WRENCH - socket screw (connecting rod)	A-23962	TOOL ASSEMBLY - roller bearing remover (back plate)
A-23937-A	WRENCH - combination	23846-2	ANVIL - roller bearing disassembling
23955	PLUG - needle bearing assembling (connecting rod)	A-23951	TOOL ASSEMBLY - piston pin removal
A-23137	JACKSCREW ASSEMBLY	A-23922	COVER ASSEMBLY - intake
23136	SLEEVE - bearing and shaft installation	A-24047	COVER ASSEMBLY - exhaust
22820-3	COLLAR - bearing installation	23420	PLUG - needle bearing
23846-1	ANVIL - crankshaft installation	23987	SHIM - plastic (magneto air gap)
23759	SLEEVE - seal assembling (crankcase)	24006-1	PLATE - crankshaft aligning
23972	SLEEVE - seal installation (crankcase only)	23968	ANVIL - roller bearing assembling
23957	PLUG - seal assembling (crankcase)	24113	PLUG - bearing installation
A-23934	SPANNER WRENCH ASSEMBLY - clutch	24114	SLEEVE - bearing removal
A-23841	WRENCH - insert (studs)		

XL-88

MULTI-PURPOSE

SAW

HOMELITE

A **Textron** DIVISION • PORT CHESTER, NEW YORK

Leon's Chainsaw Parts & Repair
Do Not Sell or Reproduce