

PRICE.25

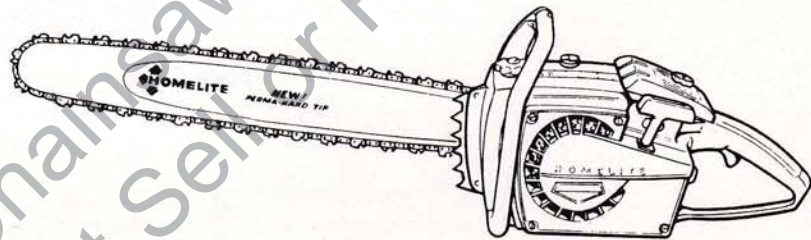
PARTS LIST

XL-870

XL-875

Above s/n 2807141

HOMELITE®



XL

CHAIN SAWS

PART NO. 24249

Printed in U.S.A.

569

Leon's Chainsaw Parts & Repair
Do Not Sell Or Reproduce

XL-870 HOMELITE XL-875

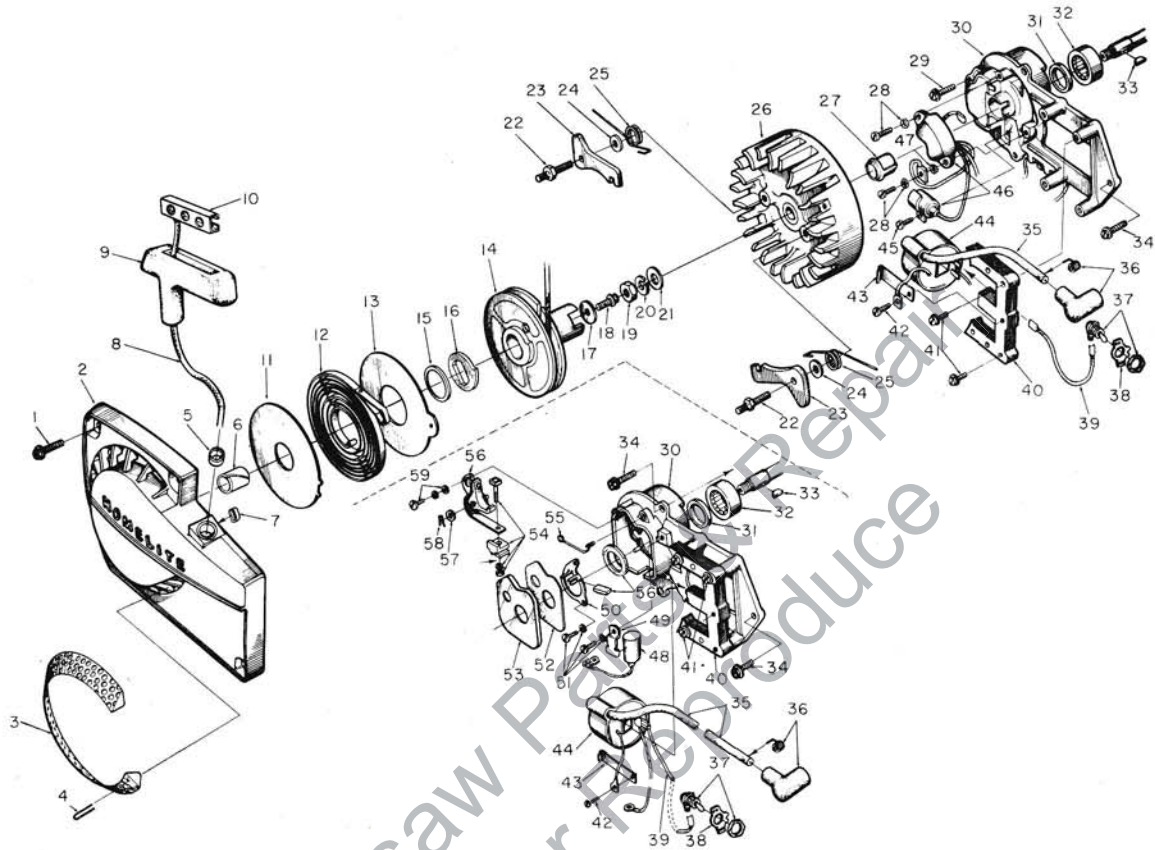


FIGURE 1

No.	Description	Part No.	XL 870		Qty.	No.	Description	Part No.	XL 875		Qty.
			XL 870	XL 875					XL 870	XL 875	
1	SCREW-hex, 12-24 x 5/8	80676	x	x	4	32	BEARING-roller	63195	x	x	1
2	HOUSING-fan	A-64504	x	x	1	33	KEY-woodruff	75078	x	x	1
3	Includes: SCREEN-fan housing	A-64421	x	x	1	34	SCREW-hex, 12-24 x 11/16	80751	x	x	4
4	Includes: FASTENER-screen	64419-1	x	x	6	35	SCREW-hex, 12-24 x 11/16	80751	x	x	1
5	BUSHING-starting rope	67177	x	x	1	36	LEAD-high tension	63632	x	x	1
6	BUSHING-starter rope	64443	x	x	1	37	TERMINAL-spark plug	A-33055	x	x	1
7	BUSHING-rewind spring	65830	x	x	1	38	SWITCH-toggle w/nut	A-57650-3	x	x	1
8	ROPE-starting	58806	x	x	1	39	PLATE-indicating "On-Off"	72085-A	x	x	1
9	GRIP-starting rope	58915	x	x	1	40	LEAD-ground	A-59031	x	x	1
10	INSERT-rope retaining	58847	x	x	1	41	CORE-coil	63630	x	x	1
11	SHIELD-spring (inner)	63566	x	x	1	42	SCREW-coil core	64021	x	x	4
12	SPRING-rewind	63268-A	x	x	1	43	SCREW-ground	58872	x	x	1
13	SHIELD-spring (outer)	63565-A	x	x	1	44	CLIP-coil retaining	63726	x	x	1
14	PULLEY-rewind starter	A-64446	x	x	1	45	COIL-ignition	63625	x	x	1
15	Includes: BUSHING-spring lock	64400	x	x	1	46	COIL-ignition	63998-A	x	x	1
16	LOCK-rewind spring	64049-A	x	x	1	47	SCREW-condenser clamp	64022	x	x	1
17	WASHER-retaining	58763	x	x	1	48	SWITCH & CONDENSER	65762	x	x	1
18	SCREW-hex, 10-32 x 1/2	80648	x	x	1	49	WASHER-external tooth, #8	83029	x	x	1
19	NUT-hex, 3/8-24	81124	x	x	1	50	CONDENSER	63626	x	x	1
20	WASHER-lock, 3/8	83102	x	x	1	51	CLAMP-condenser	63627	x	x	1
21	WASHER-flat, 3/8	84010-1	x	x	1	52	RETAINER-felt	63628	x	x	1
22	STUD-shoulder	58757-B	x	x	2	53	SCREW-contact plate	55411	x	x	3
23	PAWL-starter	58756	x	x	2	54	GASKET-breaker box cover	63316	x	x	1
24	WASHER	58851	x	x	2	55	COVER-breaker box	63317	x	x	1
25	SPRING-starter pawl	58758	x	x	2	56	BLOCK-terminal	A-58934	x	x	1
26	ROTOR-magneto	63406	x	x	1	57	SPRING-clip cover	76413	x	x	1
27	ROTOR-magneto	65837	x	x	1	58	POINTS-breaker	A-63631	x	x	1
28	CAP-dust	64002	x	x	1	59	Includes: WASHER-point	28028	x	x	1
29	SCREW-pan, 8-32 x 1/2	65763	x	x	2		CLIP-post	28008	x	x	1
30	SCREW-hex, 12-24 x 5/8	80707	x	x	3		SCREW-contact plate	76421	x	x	1
31	PLATE-magneto back	A-63633	x	x	1						
	PLATE-back and trigger	A-65766	x	x	1						
	Includes: SEAL	58688-A	x	x	1						

XL875 Only -

A-67131 complete magneto is available to convert to breaker type magneto.

XL-870 HOMELITE XL-875

Below s/n 2998297

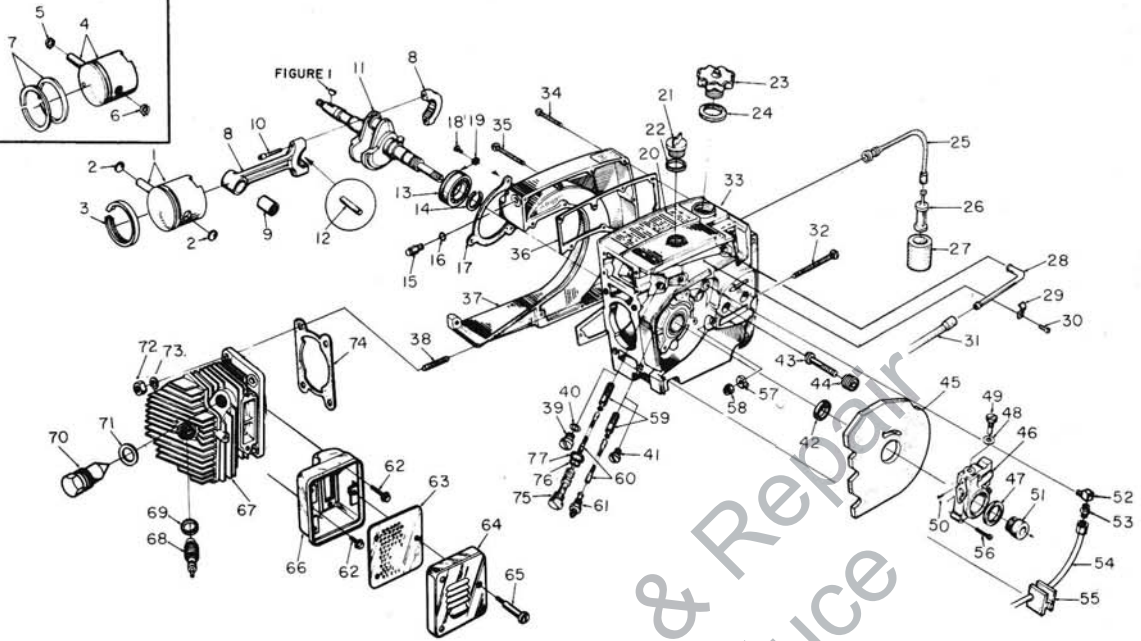


FIGURE 2

No.	Description	Part No.	XL 870	XL 875	Qty.	No.	Description	Part No.	XL 870	XL 875	Qty.
*1	PISTON & PIN	A-67179	x	x	1	38	STUD	55871	x	x	4
2	Includes: PLUG-piston pin retaining	65624	x	x	2	39	CAP	63115	x	x	1
*3	PISTON RING-"L" shaped	67108	x	x	1	40	WASHER	58138	x	x	1
4	PISTON & PIN	A-63781-B	x	x	1	41	PLUG-pipe	28097	x	x	1
5	Includes: RING-piston pin retaining	55095	x	x	1	42	SEAL	58688-A	x	x	1
6	RING-piston pin retaining	64742	x	x	1	43	STUD-guide bar	59764-A	x	x	2
7	PISTON RING	55537	x	x	2	44	INSERT-threaded	59896-A	x	x	2
8	ROD-connecting	A-63309	x	x	1	45	SHIELD-sawdust	A-64715	x	x	1
9	Includes: BEARING-needle	59351	x	x	1	46	PUMP-automatic oil	A-64384	x	x	1
10	SCREW-socket, 8-32 x 9/16	80805	x	x	2	47	Includes: SEAL-felt	59926	x	x	1
11	CRANKSHAFT	59625-2	x	x	1	48	GASKET-cam screw	59736	x	x	1
12	BEARING-needle (28 rollers)	A-64621	x	x	1	49	SCREW-cam	64102-A	x	x	1
13	BEARING-ball	58190-S	x	x	1	50	SCREW-pan, 4-40 x 1/4	80919	x	x	2
14	RING-retaining	58319-A	x	x	1	51	WORM-gear	59675	x	x	1
15	VALVE-check	A-65608	x	x	1	52	CONNECTOR-elbow 90°	31734	x	x	1
16	"O" RING	65613	x	x	1	53	FITTING-tube	65696	x	x	1
17	GASKET-crankcase	63319	x	x	1	54	LINE-oil (intake)	A-65705	x	x	1
18	SCREW-bearing retaining	59704	x	x	2	55	GROMMET-oil line	65357	x	x	1
19	WASHER-lock	59705	x	x	2	56	SCREW-fil., 8-32 x 3/4	80248	x	x	3
20	DECAL-caution	64144	x	x	1	57	PIN-guide bar adjusting	58783-1	x	x	1
21	CAP-oil filler	A-63717-A	x	x	1	58	NUT-flexloc, 1/4-20	81108	x	x	1
22	Includes: GASKET	56607	x	x	1	59	FILTER-oil	A-64293	x	x	2
	VALVE-check (not shown)	63718	x	x	1	60	LINE-oil pick-up	59000	x	x	2
23	CAP-fuel filler	A-65809	x	x	1	61	CONNECTOR-oil filter	65695	x	x	1
24	Includes: GASKET	58957	x	x	1	62	SCREW-hex, 12-24 x 5/8	80978	x	x	3
25	LINE-flexible fuel	65593	x	x	1	63	BAFFLE-muffler	65633	x	x	1
26	FILTER-fuel	A-59251	x	x	1	64	CAP-muffler	63520-3	x	x	1
27	Includes: FILTER-felt	59253-1	x	x	1	65	SCREW-shoulder	63855-A	x	x	3
*28	CONNECTOR-fuel line	67080	x	x	1	66	BODY-muffler	A-63535-1A	x	x	1
29	CLAMP-fuel line	65597-1	x	x	1	67	CYLINDER-2 1/16" bore	65605-2	x	x	1
30	SCREW-pan, 6-32 x 5/16	80605	x	x	1	68	SPARK PLUG	63547-S	x	x	1
31	LINE-fuel	65718	x	x	1	69	Includes: GASKET	25038	x	x	1
32	SCREW-guide bar adjusting	63367	x	x	1	*70	PLUG & WASHER	A-67228	x	x	1
33	CRANKCASE & TANK	A-65879	x	x	1	71	Includes: WASHER-copper	65825	x	x	1
	Includes: GASKET-(not shown)	58338	x	x	1	72	NUT-hex, 1/4-28	81065-2	x	x	4
	CAP-(not shown)	58339	x	x	1	73	WASHER-lock, 1/4	83009	x	x	4
34	SCREW-fil., 8-32 x 5/8	82146	x	x	6	74	GASKET-cylinder	63778-1	x	x	1
35	SCREW-fil., 8-32 x 1 3/4	82147	x	x	9	75	TUBE-oil line	63452-A	x	x	1
36	GASKET-fuel tank	65391	x	x	1	76	"O" RING	58406	x	x	1
37	COVER-fuel tank	64825-4	x	x	1	77	GASKET-oil line tube	63751	x	x	1

*Denotes new parts.

XL-870 HOMELITE XL-875

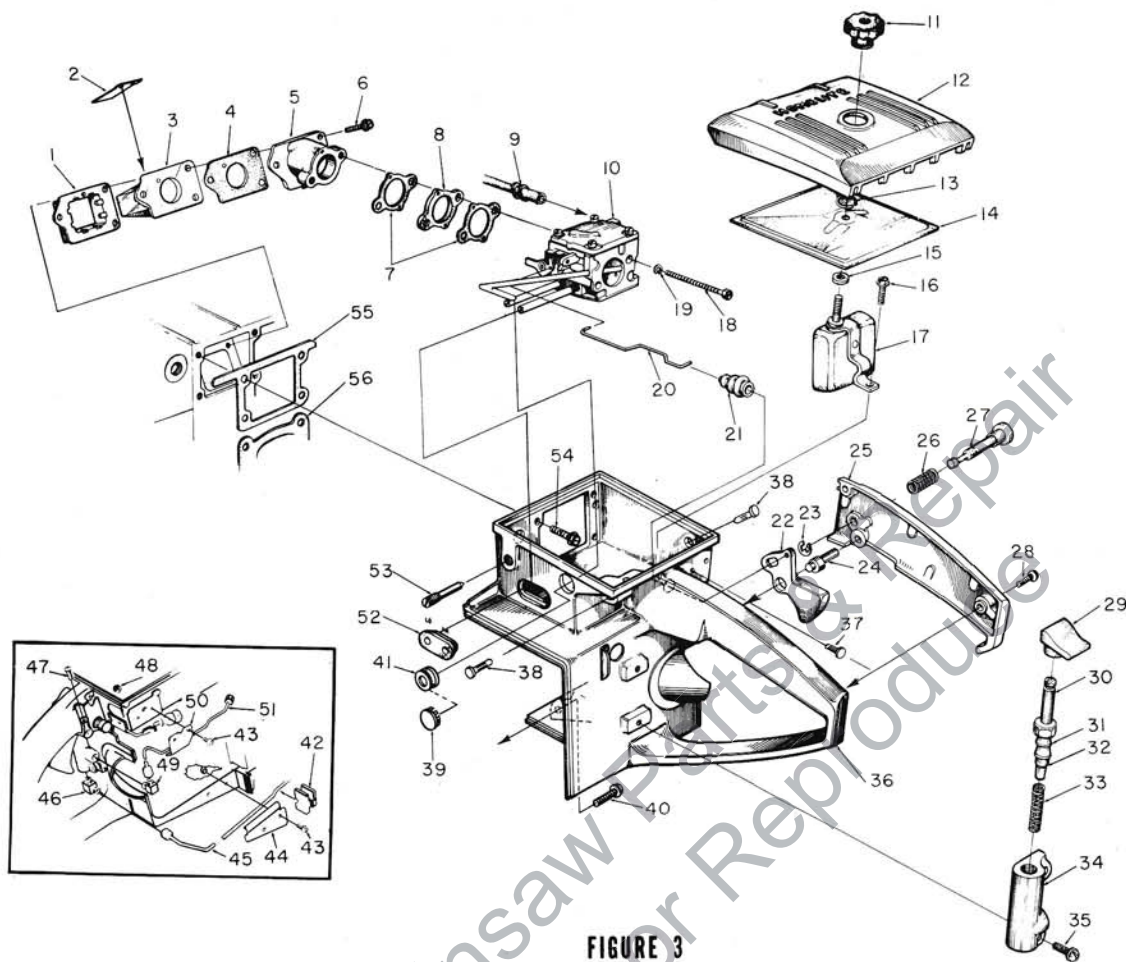


FIGURE 3

No.	Description	Part No.	XL 870	XL 875	Qty.	No.	Description	Part No.	XL 870	XL 875	Qty.
1	RETAINER-reed valve	63370	x	x	1	29	BUTTON-oil pump plunger	63622	x	x	1
2	VALVE-reed	63166	x	x	4	30	PLUNGER-oil pump	A-57834-16	x	x	1
3	SEAT-reed valve	63371-A	x	x	1	31	Includes: "O" RING-shaft	59074	x	x	1
4	GASKET-reed valve seat	65483	x	x	1	32	"O" RING-plunger	74388	x	x	1
5	SPACER-reed valve seat	63019-1A	x	x	1	33	SPRING-compression	59293	x	x	1
6	SCREW-shoulder	65489	x	x	3	34	BODY-oil pump	63343-5	x	x	1
7	GASKET-carburetor	63254	x	x	2	35	SCREW-hex, 8-32 x 7/8	80568	x	x	2
8	SPACER-carburetor	63256	x	x	1	*36	HANDLE-throttle	A-65881-B	x	x	1
9	LINE-fuel	65718	x	x	1	37	Includes: PLUG-accordion	65889	x	x	2
10	CARBURETOR	A-65578-A	x	x	1	38	PLUG-accordion	63848	x	x	2
11	NUT-cover mounting	A-63582-A	x	x	1	*39	PLUG-button	67042	x	x	1
12	COVER-air filter element	63634-1	x	x	1	40	SCREW-hex, 12-24 x 7/8	80891	x	x	1
13	RING-bearing retaining	58319-A	x	x	1	41	GROMMET	60929	x	x	1
14	FILTER ELEMENT-air	63341	x	x	1	42	GROMMET-oil line	65357	x	x	1
15	GASKET-mounting nut	58392-1	x	x	1	43	SCREW-pan, 6-32 x 3/8	80571	x	x	4
16	SCREW-hex, 12-24 x 1/2	80821	x	x	1	44	CLAMP-oil line	65513-1	x	x	1
17	DEFLECTOR-air, w/bracket	A-63593	x	x	1	45	LINE-oil	A-65682	x	x	1
18	SCREW-hex, 10-32 x 2	80965	x	x	2	46	VALVE-check	A-65515	x	x	1
19	WASHER-lock, #10	83046	x	x	2	47	SCREW-fil., 8-32 x 5/8	80023-2	x	x	1
20	ROD-throttle	63266-A	x	x	1	48	NUT-lock, 6-32	81126	x	x	4
21	BOOT-throttle rod	58348	x	x	1	49	VALVE-check	A-65502	x	x	1
22	TRIGGER-throttle	65745	x	x	1	50	CLAMP-oil line	65660-1	x	x	1
23	RING-retaining	58409	x	x	1	51	LINE-oil	A-65705	x	x	1
24	PIN-throttle lock adjusting	65719	x	x	1	52	GROMMET	58858	x	x	1
*25	COVER-throttle handle	A-65882-A	x	x	1	53	SCREW-idle adjustment	63369	x	x	1
	Includes: BUSHING-throttle lock (not shown)	59064	x	x	1	54	SCREW-hex, 12-24 x 5/8	80676	x	x	4
26	SPRING-lock	58405	x	x	1	55	GASKET-throttle handle	63779-B	x	x	1
27	PIN-throttle lock	58924	x	x	1	56	GASKET-cylinder	63778-1	x	x	1
28	SCREW-pan, 8-32 x 1/2	80560	x	x	2						

*Denotes new parts.

XL-870 HOMELITE XL-875

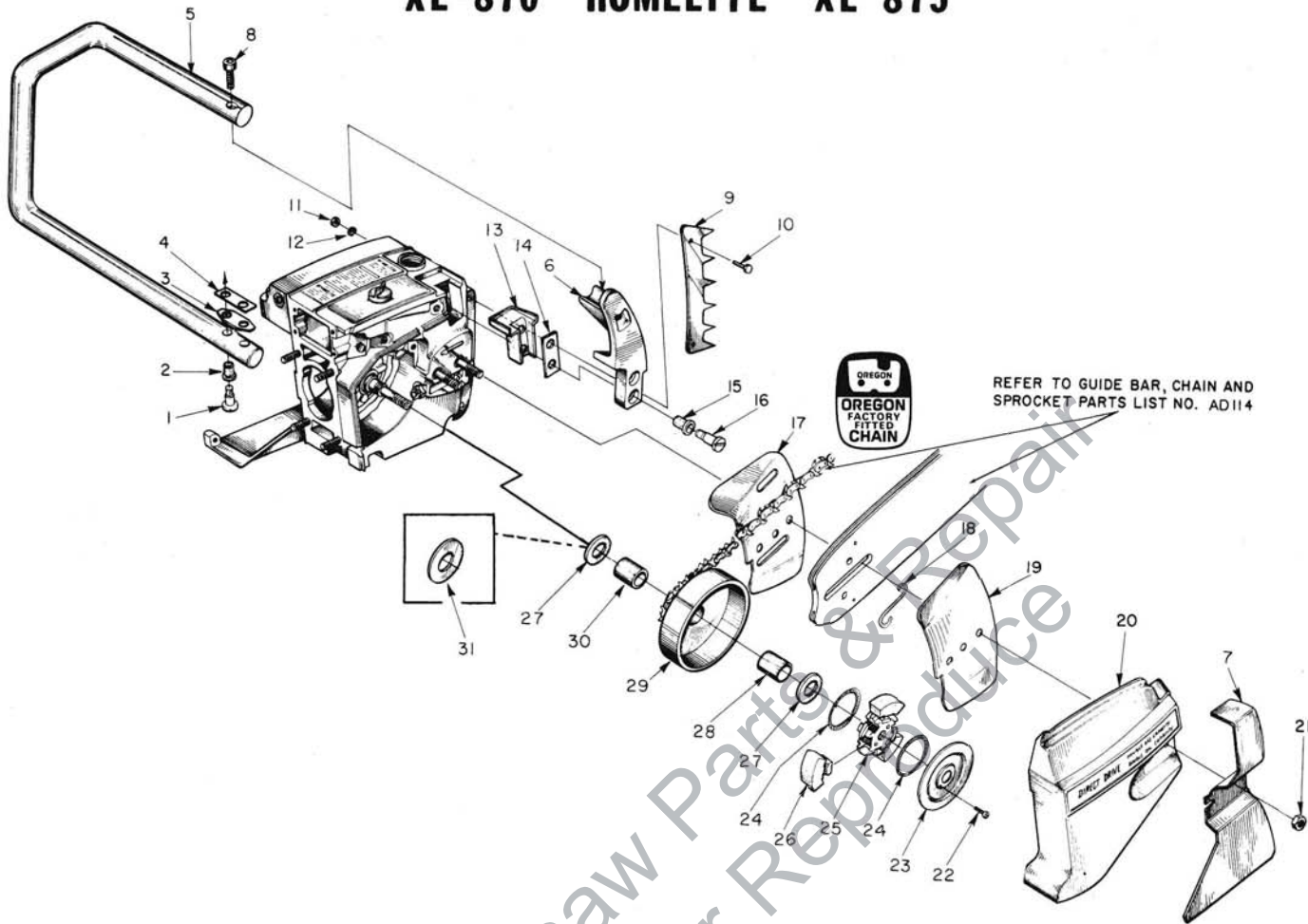


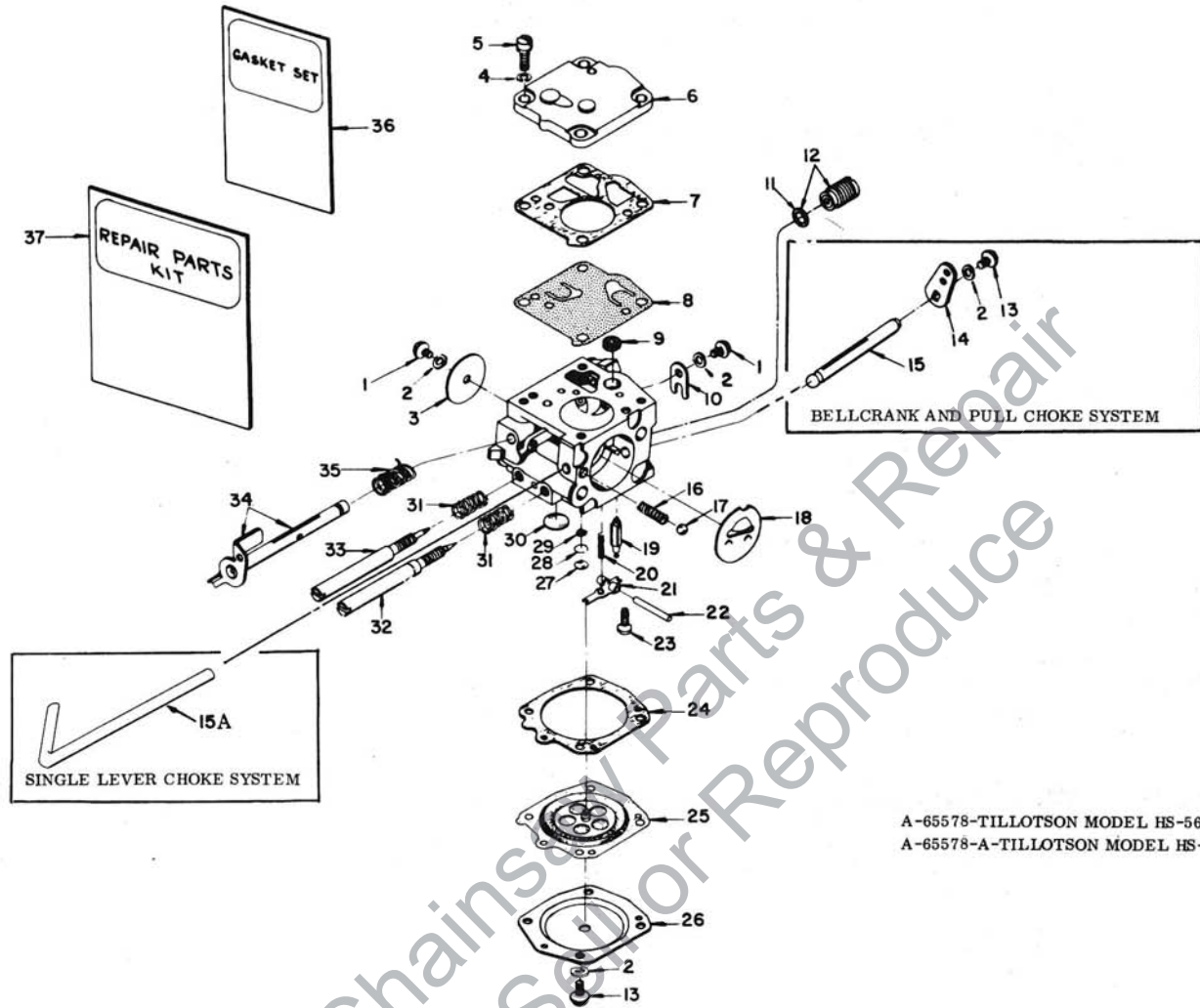
FIGURE 4

No.	Description	Part No.	XL 870	XL 875	Qty.	No.	Description	Part No.	XL 870	XL 875	Qty.
1	SCREW-shoulder	65520	x	x	2	15	GROMMET	65519	x	x	2
2	GROMMET-handle bar	65518	x	x	2	16	SCREW-shoulder	65521	x	x	2
3	PLATE-handle bar	65599	x	x	1	17	PLATE-guide bar (inner)	58781	x	x	1
4	SPACER-handle bar	65542	x	x	1	18	SPRING-guide bar	64448	x	x	1
	KIT-handle bar (full wrap-around) ①	A-65894	x	x	1	19	PLATE-guide bar (outer)	58782	x	x	1
5	Includes: HANDLE BAR ①	A-65814-2	x	x	1	20	COVER-drivecase	63009-2	x	x	1
6	BRACKET-handle bar	65607-5	x	x	1	21	NUT-hex, 5/16-18	81196	x	x	2
7	GUARD-chain	64867-1	x	x	1	22	SCREW-hex, 10-32 x 1/2	80361-1	x	x	2
	KIT-handle bar (3/4 wrap-around)	A-65902	†	†	1	23	COVER-clutch	58751-1	x	x	1
	Includes: HANDLE BAR	A-65900	†	†	1	24	SPRING-clutch	55123-C	x	x	2
	BRACKET-handle bar	65607-5	†	†	1	25	SPIDER-clutch	65723-1	x	x	1
	BRACE-handle bar	63660	†	†	1	26	SHOE-clutch	55076-4	x	x	6
	SCREW-hex, 12-24 x 3/4	80867	†	†	1	27	WASHER-thrust	63462	x	x	2
8	SCREW-socket, 1/4-20 x 1	80428	x	x	1	28	BEARING-roller	64124	x	x	1
9	KIT-spiked bumper	A-63720	x	x	1	29	DRUM & HUB	A-65990	x	x	1
10	Includes: SCREW-hex, 12-24 x 3/4	80867	x	x	2		SPROCKET-3/8" pitch, 7 tooth	OM-68210	x	x	1
11	NUT-12-24	81068	x	x	2		.404 pitch, 7 tooth	OM-10513	†	†	1
12	WASHER-lock, #12	83056	x	x	2	30	RACE-inner	64129	x	x	1
13	MOUNT-shock	65509	x	x	1	31	WASHER-thrust (inner) ②	63463	†	†	1
14	PLATE-handle bar bracket	65598	x	x	1						

① Wrap-around Handle Bar and special Bracket requires #63660 Brace (not shown) mounted on drivecase cover. Attach Brace to Handle Bar with one #80867 Screw.

② The following Optional Sprockets & Drums must use one 63463 Washer (Index #):
 3/8" pitch, 7 tooth A-65731
 3/8" pitch, 8 tooth A-65732
 .404 pitch, 7 tooth A-65727
 .404 pitch, 8 tooth A-65728

XL-870 HOMELITE XL-875



A-65578-TILLOTSON MODEL HS-56A
A-65578-A-TILLOTSON MODEL HS-73A

No.	Part No.	Description	A-65578		No.	Part No.	Description	A-65578-A	
			A-65578	A-65578-A				A-65578	A-65578-A
1	80264†	SCREW-rd., 4-40 x 3/16	x	x	18	58984	SHUTTER-choke	x	x
2	83008-1†	WASHER-lock, #4	x	x	19	59717†	NEEDLE-inlet	x	x
3	†83008-1†	WASHER-lock, #4	x	x	20	55759†	SPRING-control lever	x	x
4	25050	SHUTTER-throttle	x	x	21	59716†	LEVER-inlet control	x	x
5	83024	WASHER-lock, #6	x	x	22	58977†	PIN-control lever fulcrum	x	x
6	80275	SCREW-fit, 6-32 x 3/8	x	x	23	65798†	SCREW-oval, 4-40 x 1/4	x	x
7	58975	COVER-fuel pump diaphragm	x	x	24	58978	GASKET-main diaphragm	x	x
8	58981	GASKET-pump diaphragm	x	x	25	58988†	DIAPHRAGM-main control	x	x
9	58980-R†	DIAPHRAGM-fuel pump	x	x	26	58979	COVER-main diaphragm	x	x
10	58974†	SCREEN-fuel inlet	x	x	27	58994†	PLUG-extension (small)	x	x
11	58982	CLIP-throttle shaft retaining	x	x	28	57819	RING-retaining	x	x
12	74060	GASKET	x	x	29	59500	SCREEN-channel	x	x
13	A-65801	VALVE-governor	x	x	30	58991†	PLUG-extension (large)	x	x
14	80591	SCREW-rd., 4-40 x 1/4	x	x	31	73075†	SPRING-adjustment needle	x	x
15	†80591	SCREW-rd., 4-40 x 1/4	x	x	32	63676†	SCREW-main adjustment	x	x
16	†65800	LEVER-choke	x		33	63677†	SCREW-idle adjustment	x	x
17	†65799†	SHAFT-choke (Bellcrank & Pull Choke System)	x		34	A-63345	SHAFT-throttle w/lever	x	x
*15A	67032†	SHAFT-choke (Single Lever Choke System)	x		35	59460†	SPRING-throttle opening	x	x
18	73264	SPRING-choke friction	x	x	36	65895†	GASKET SET	x	x
19	25527	BALL-choke friction	x	x	37	65896	REPAIR KIT	x	x

† Not required when using Single Lever Choke System

* Denotes new part

† Indicates contents of Repair Kit

XL-870 HOMELITE XL-875

ACCESSORIES

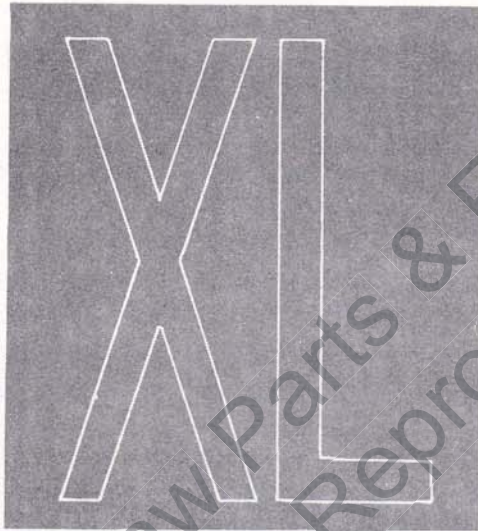
A-63540-A	SPARK ARRESTER
A-24266	KIT-starting rope
A-24270	KIT-filter
A-24274	KIT-ignition
A-24275	KIT-guide bar plate
A-24279	KIT-fastening parts

TOOLS

A-23937-B	WRENCH-combination
23528	WRENCH-socket screw (conn. rod)
A-23965	JACKSCREW
23136-1	SLEEVE-bearing and shaft installation
22820-4	COLLAR-bearing installation
23846-1	ANVIL-crankshaft installation
23971	SLEEVE-seal protecting (crankcase)
23972	SLEEVE-seal installation (crankcase)
23957	PLUG-seal installation (crankcase)
23987	SHIM-magneto air gap
24006-1	PLATE-shaft aligning
23968	ANVIL-bearing installation (backplate)
A-23841-A	WRENCH-insert (guide bar stud)
A-23960	PULLER-rotor
23956	PLUG-bearing and seal installation (backplate)
A-23962	JACKSCREW-bearing remover (backplate)
23846-2	ANVIL-bearing remover (backplate)
A-23696	WRENCH-spanner
24230	DRIVER-hand pozidriv
24304	BIT-pozidriv #2
23955-1	PLUG-bearing installation (conn. rod)

PAINT

23343	SPRAY CAN-green
23560	SPRAY CAN-white
22771	SPRAY CAN-red



CHAIN SAW

HOMELITE®

A **textron** DIVISION • PORT CHESTER, NEW YORK

