

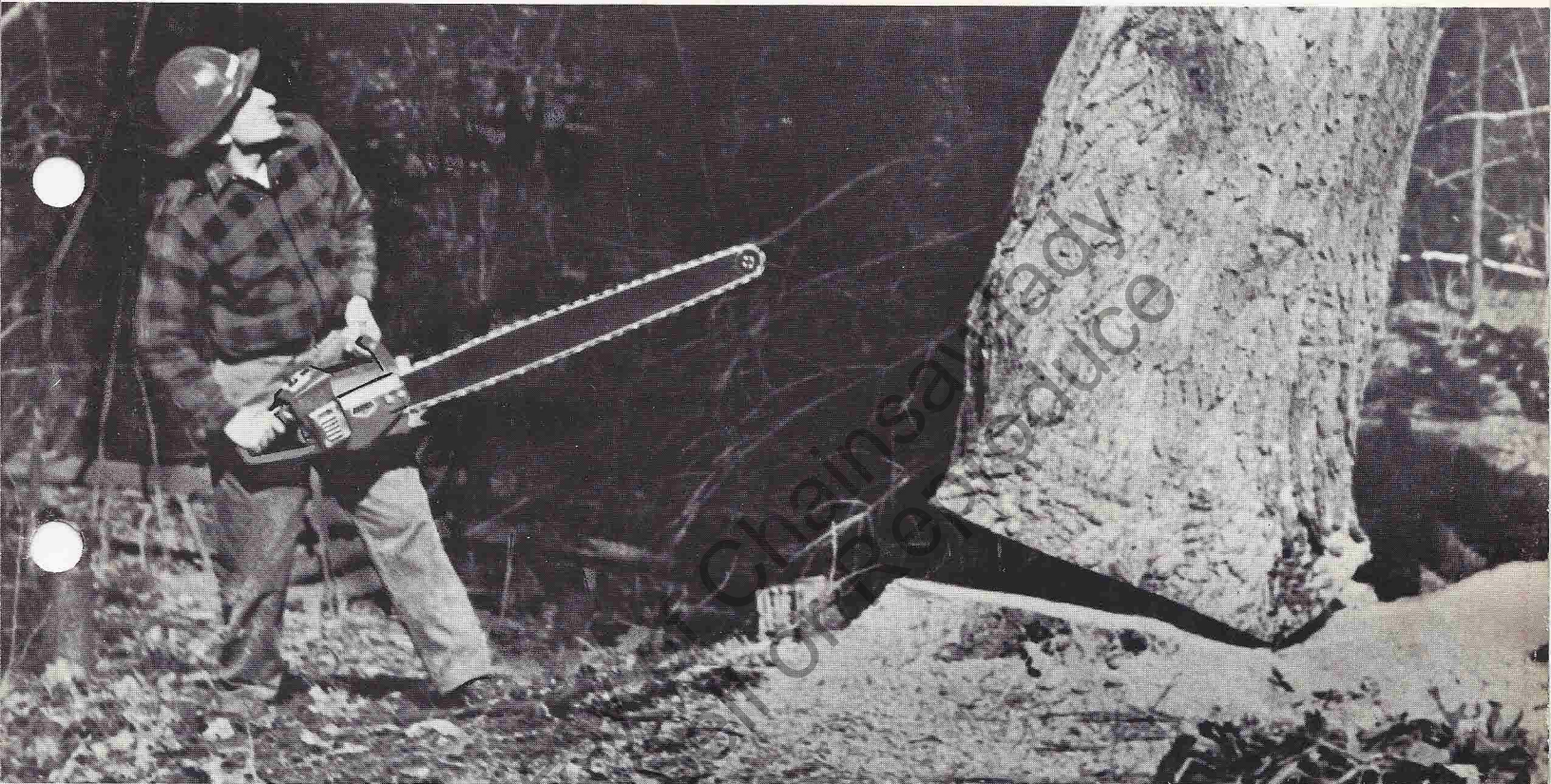
# HOMELITE

XL-850

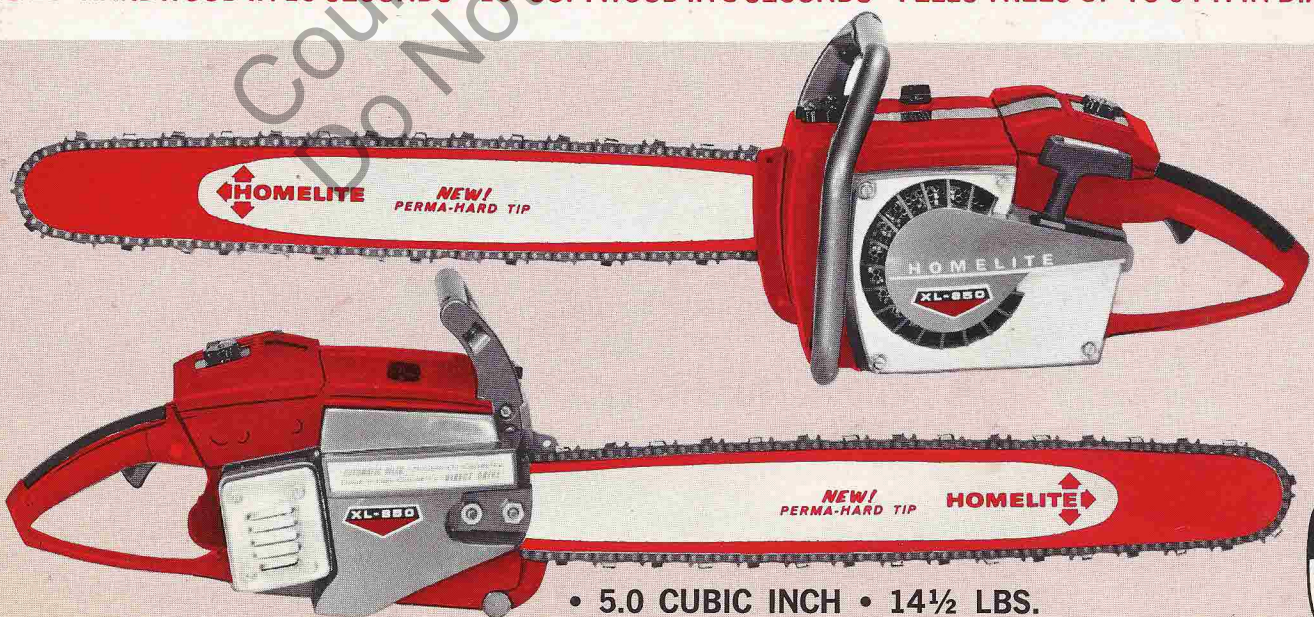
## CHAIN SAW

XL 850 X

WORLD'S FIRST CHAIN SAW WITH SOLID STATE IGNITION—NO BREAKER POINTS!



CUTS 15" HARDWOOD IN 10 SECONDS • 16" SOFTWOOD IN 8 SECONDS • FELS TREES UP TO 5 FT. IN DIAMETER



- 5.0 CUBIC INCH • 14½ LBS.
- AUTOMATIC OILER WITH MANUAL OVERRIDE
- SOLID STATE IGNITION



# HOMELITE



## SPECIFICATIONS

### CLASS XL

Displacement . . . . . 5.0 Cubic Inch  
Oiler Type . . . . . Automatic, with Manual Override  
Dry Weight . . . . . 14½ pounds (less bar and chain)

### ENGINE

Type . . . Homelite, Single Cylinder, 2 Cycle (loop Scavenged)  
Displacement . . . . . 5.0 Cubic Inch  
Bore . . . . . 2¼" / 16"  
Stroke . . . . . 1½"  
Engine Speed . . . . . 6,000 RPM, under Load  
Bearings . . . . . Heavy Duty Ball and Antifriction Needle  
Starter . . . . . Positive Engagement with Automatic Rewind  
Muffler . . . . . Spark Arresting, Baffled, Quiet Type  
Clutch . . . Heavy Duty Centrifugal, 3,000 RPM Engaging Speed

### FUEL SYSTEM

Carburetor . . . Tillotson, All position, Double Diaphragm with  
Integral Fuel Pump and Strainer. External Adjustments  
Intake valve . . . . . Pyramid, with 4 Stainless Steel Reeds  
Fuel Capacity . . . . . 38 ozs.  
Fuel Pick-up . . . Flexible Fuel Pick-up with Replaceable Filter  
Air Filter . . . . . Micro Mesh Fiber with Integral Gaskets  
Throttle Control . . . . . Trigger in Handle with Safety  
Starting Throttle Lock

Fuel Mixture . . . . . With Each Gallon of Regular Gas Mix ½ pint  
(16:1) Homelite Oil or SAE 30 Oil

### IGNITION SYSTEM

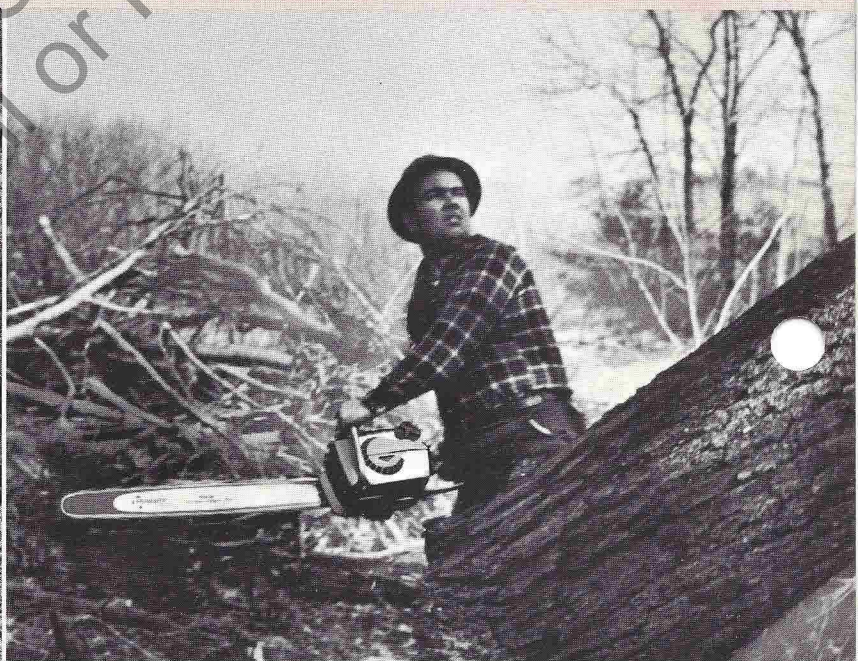
Magneto . . . . . Solid State, High Tension, Moisture  
and Dust Proof  
Breaker Point Setting . . . . . No Breaker Points—Solid State  
Timing . . . . . 30° BTDC Static  
Spark plug type and gap . . . . . Champion C J-6, 0.25" Gap

### GUIDE BAR, CHAIN AND SPROCKET

Guide Bar . . . . . .050 Gauge, Induction Hardened with Welded  
Hard-Faced Tip, Sizes 12" to 36"  
Chain . . . . . ¾" Pitch #72 Oregon Chipper  
Chain Speed . . . . . 3000 Ft. per Minute Under Load  
Chain Oiler Type . . . . . Positive, Gear Driven, Automatic Oiler  
with Manual Override  
Chain Oiler Capacity . . . . . 7.7 oz. Reservoir  
Sprocket . . . . . 8 tooth, ¾" Pitch

### GENERAL

Handle Bars . . . . . Vinyl Coated Flush Cut or Wrap-Around  
Attachments . . . . . Clearing Bar, 15" Plunge-Cut bow  
and Roller Nose Guide Bar



**HOMELITE** A **textron** DIVISION PORT CHESTER, N.Y. U.S.A.