

PRICE .25

# HOMELITE

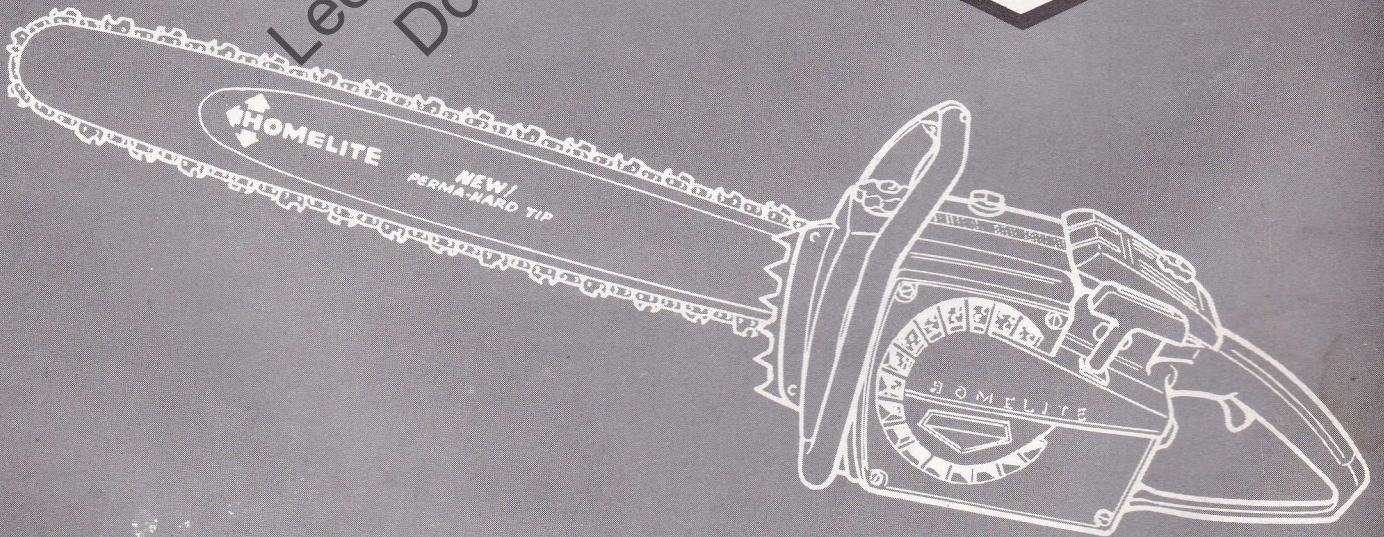
## CHAIN SAW

Leon's Chainsaw Parts & Repair  
Do Not Sell or Reproduce

SOLID STATE IGNITION



1968



**PARTS LIST**

# HOMELITE XL-850 CHAIN SAWS

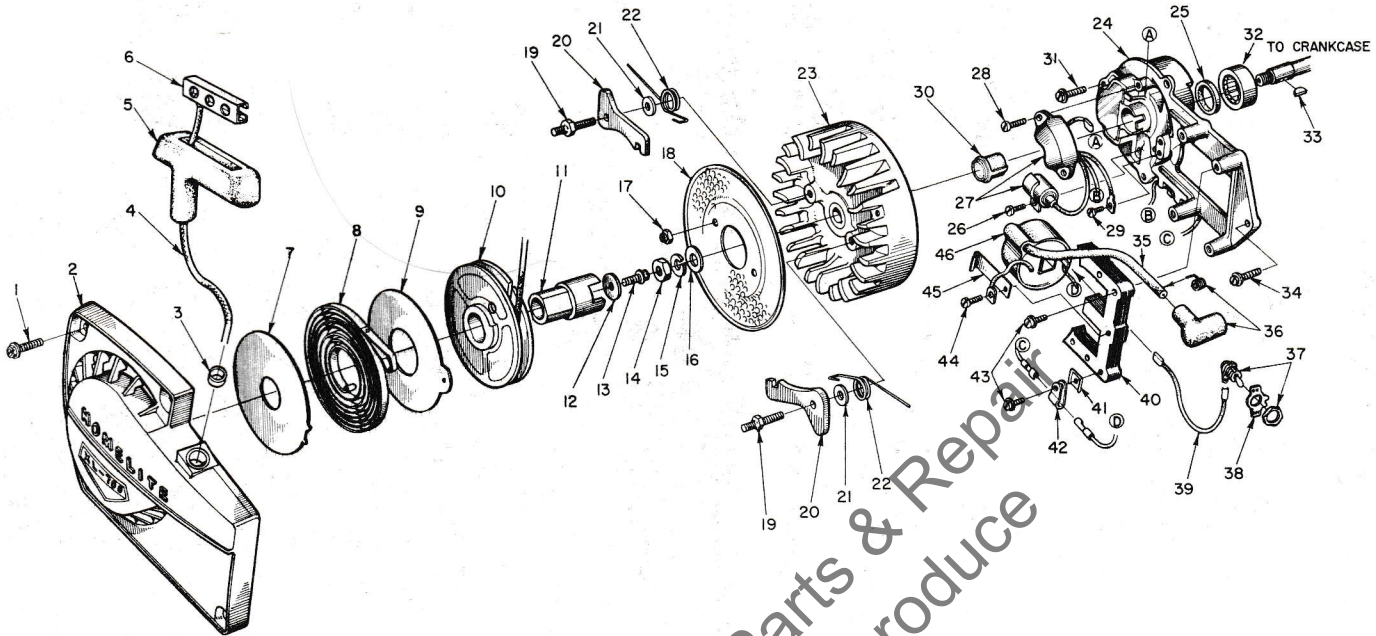


FIGURE 1

No.	Description	Part No.	Qty.	No.	Description	Part No.	Qty.
1	SCREW - hex, 12-24 x 5/8	80676	4	24	BACK PLATE - COMPLETE	* A-64023	1
2	HOUSING - fan	A-88380-1	1	25	PLATE - back & trigger	† A-64258	1
3	Includes: BUSHING - rope	59313	1	26	Includes: SEAL	† 58688	1
4	ROPE - starter	58806	1	27	SCREW - condenser clamp	† 64022	1
5	GRIP - rope	58915	1	28	SWITCH & CONDENSER	† 64000	1
6	INSERT	58847	1	29	SCREW - pan, 8-32 x 1/2	† 80560	2
7	SHIELD - spring (inner)	63566	1	30	SCREW - pan, (switch grounding)	† 76421	1
8	SPRING - rewind	63268	1	31	CAP - dust	64002	1
9	SHIELD - spring (outer)	63565-A	1	32	SCREW - hex, 12-24 x 5/8	80707	3
10	PULLEY - starter	58759-1	1	33	BEARING - roller	63195	1
11	CUP - starter	58760	1	34	KEY	75078	1
12	WASHER - retaining	58763	1	35	SCREW - hex, 12-24 x 9/16	80899	1
13	SCREW - hex	80648	1	36	LEAD - high tension	† 63632	1
14	NUT - hex, 3/8-24	81124	1	37	TERMINAL - high tension lead	A-33055	1
15	WASHER - lock, 3/8	83102	1	38	SWITCH - w/nut	A-57650-3	1
16	WASHER - flat, 3/8	84010-1	1	39	PLATE - "on-off"	72085-A	1
17	NUT - lock, 10-32	81109-2	2	40	LEAD - ground	A-59031	1
18	SCREEN - air	64137	1	41	CORE - coil	† 63630	1
19	STUD - pawl	58757-B	2	42	D-WASHER	† 64059	1
20	PAWL - starter (finger)	58756	2	43	CLAMP - nylon	† 64058	1
21	WASHER	58851	2	44	SCREW - core	† 64021	4
22	SPRING - pawl	58758	2	45	SCREW - coil grounding	† 58872	1
23	ROTOR	64001	1	46	CLIP - coil retaining	† 63726	1
					COIL	† 63998	1

\* Supplied only on special orders for units which do not have quick disconnect switch and condenser item #27.

† Part of A-64023 Back Plate (complete).

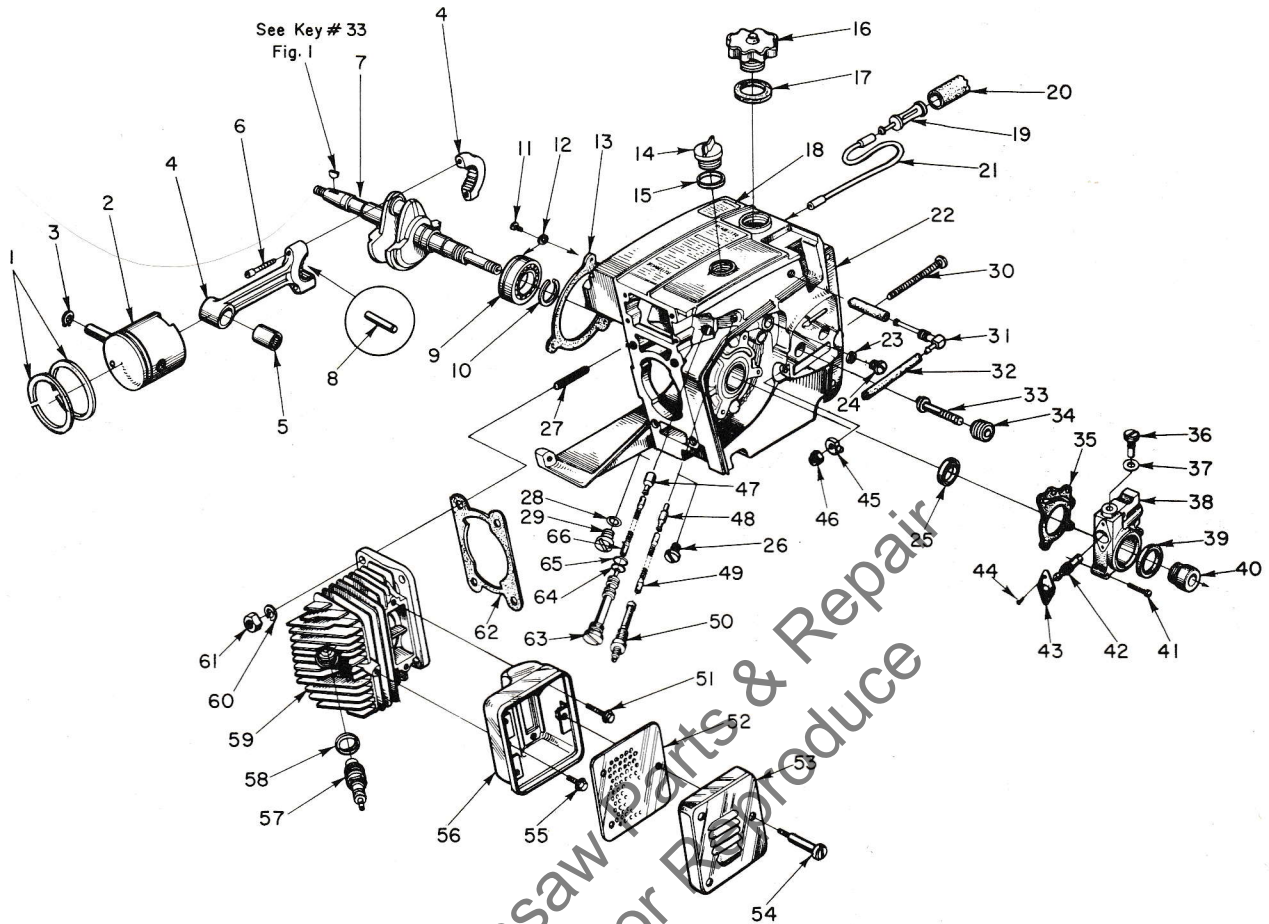


FIGURE 2

No.	Description	Part No.	Qty.	No.	Description	Part No.	Qty.
1	RING - piston (2-1/16" bore)	55537	2	33	STUD - guide bar	59764-A	2
2	PISTON & PIN - 2-1/6" bore	A-63751	1	34	INSERT - threaded	59896	2
3	Includes: RING - retaining	53095	1	35	GASKET - oil pump	63471	1
4	ROD - connecting	A-63309	1	36	SCREW - cam	59737	1
5	Includes: BEARING - needle	39351	1	37	GASKET	59736	1
6	SCREW - socket cap, 8-32 x 9/16	50805	2	38	HOUSING - automatic oiler	A-63461-A	1
7	CRANKSHAFT	59625-2	1	39	SEAL - felt	59926	1
8	BEARING - needle (set 28)	A-63307	1	40	GEAR - worm	59675	1
9	BEARING - ball	58190-S	1	41	SCREW - hex, 6-32 x 13/16	80962	3
10	RING - retaining	58319-A	1	42	PLUNGER - gear	63760	1
11	SCREW - bearing retaining	59704	2	43	BEARING - flanged	59719	1
12	WASHER - lock	59705	2	44	SCREW - pan, 4-40 x 1/4	80919	2
13	GASKET - sealing	63319	1	45	PIN - guide bar adjusting	58783	1
14	CAP - oil (vented)	A-63717	1	46	NUT - lock, 1/4-20	81108	1
15	Includes: GASKET	56607	1	47	FILTER - oil	A-58828	1
	(not shown) VALVE - vent	63718	1	48	FILTER - oil	A-59009	1
	(not shown) COLLAR - retaining	63719	1	49	SLEEVE	59000	1
16	CAP - fuel	A-64140	1	50	CONNECTOR - oil filter	64018	1
17	Includes: GASKET	58957	1	51	SCREW - hex, 12-24 x 5/8	80978	2
18	DECAL - caution	64144	1	52	BAFFLE - muffer	63521-A	1
19	FILTER ASSEMBLY	A-59251	1	53	CAP - muffer	63520-1	1
20	Includes: FILTER	59253	1	54	SCREW - shoulder	63855	3
21	LINE - flexible	55805	1	55	SCREW - hex, 12-24 x 3/8	80837	1
22	CRANKCASE & TANKS	A-63682-A	1	56	BODY - muffer	A-63535-1A	1
23	Includes: GASKET	58338	1	57	SPARK PLUG	63547-S	1
24	CAP	58339	1	58	Includes: GASKET	25038	1
25	SEAL	58688-A	1	59	CYLINDER - 2-1/16" bore	63012-1	1
26	PLUG - pipe	28097	1	60	NUT - hex, 1/4 x 28	81065-2	4
27	STUD	55871	4	61	WASHER - lock, 1/4	83009	4
28	WASHER	58138	1	62	GASKET - cylinder	63778	1
29	CAP	63115	1	63	TUBE - oil line	63452	1
30	SCREW - guide bar adjusting	63367	1	64	"O" RING	58406	1
31	FITTING - elbow	63297-A	1	65	GASKET - oil line tube	63751	1
32	LINE - fuel	63335-A	1	66	LINE - oil pick-up	63605	1

ACCESSORY

A-63540-A SPARK ARRESTOR

ALWAYS FURNISH MODEL AND SERIAL NUMBER WHEN ORDERING PARTS.

# HOMELITE CHAIN SAWS

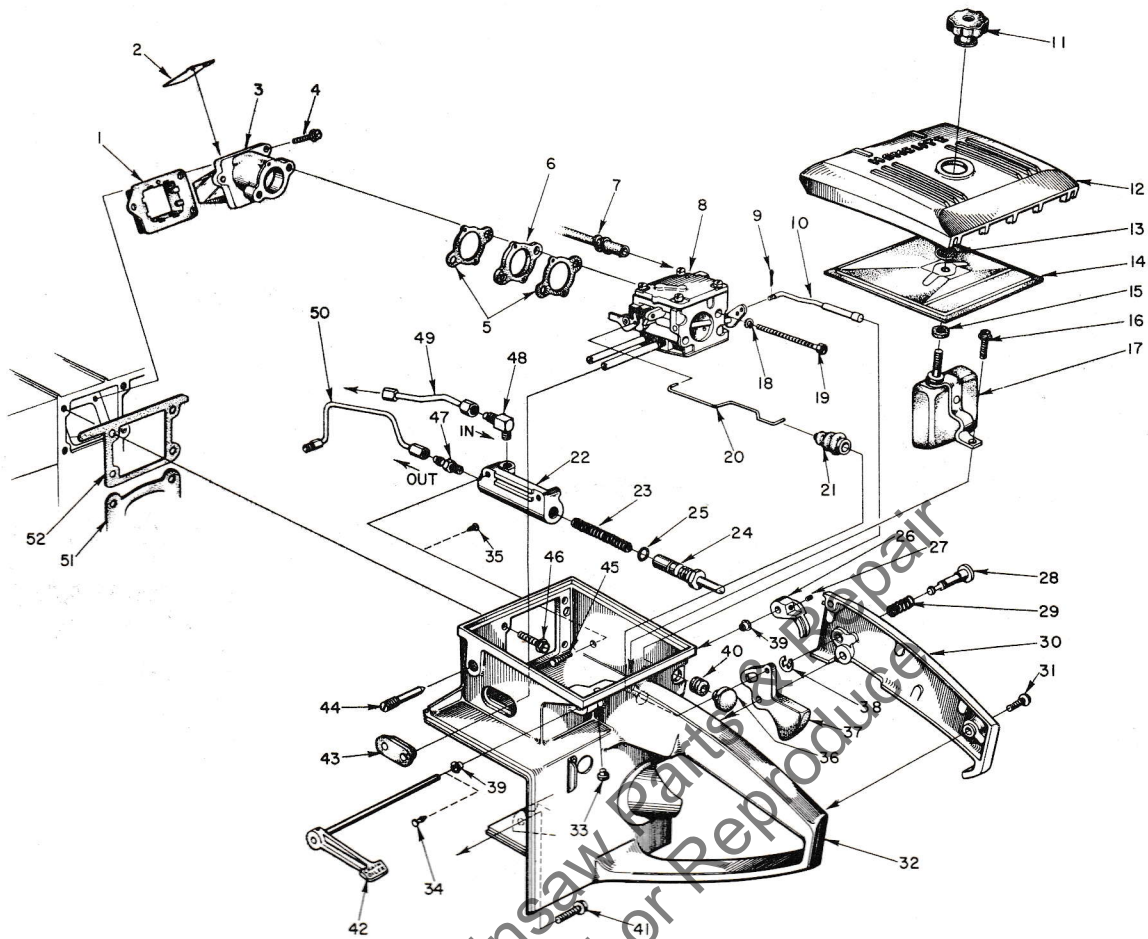
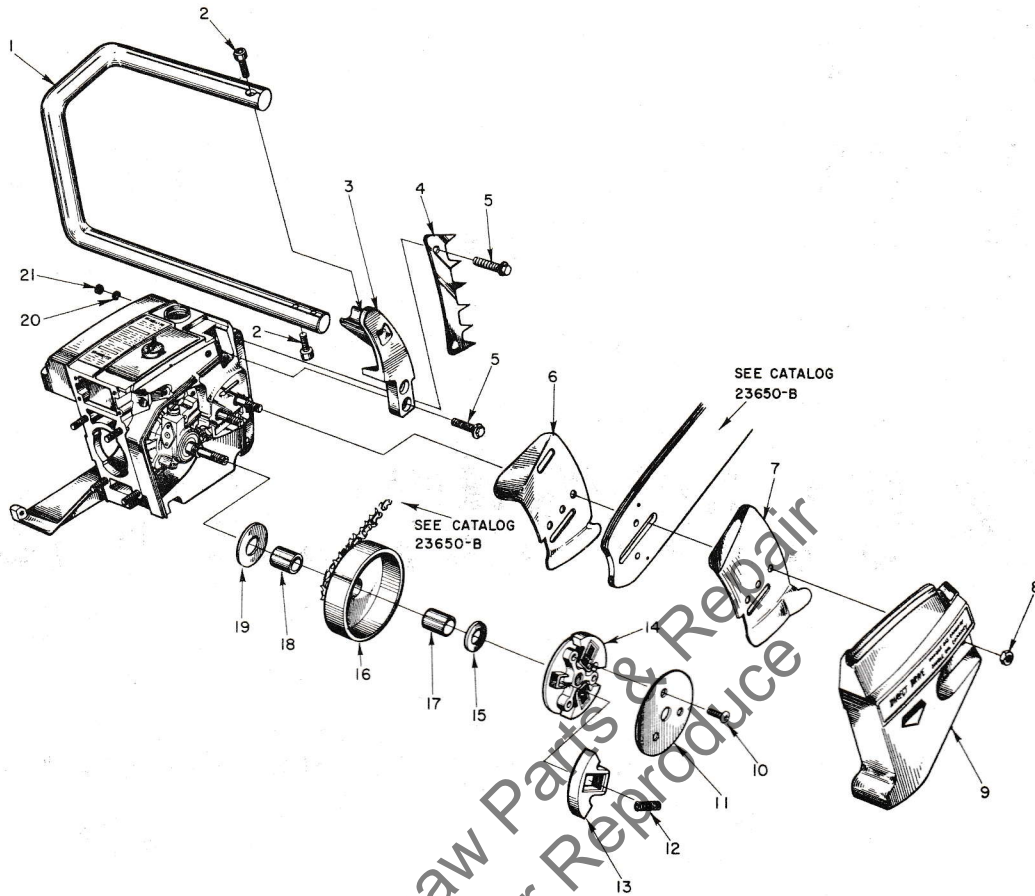


FIGURE 3

No.	Description	Part No.	Qty.	No.	Description	Part No.	Qty.
1	RETAINER - reed valve	66370	1	27	SCREW - socket, set, 6-32 x 1/4	80989	1
2	VALVE - reed	63466	4	28	PIN - throttle lock	58924	1
3	SEAT - reed valve	A-63907	1	29	SPRING - lock	58405	1
4	SCREW - pan, 8-32 x 1/2	63709	3	30	COVER - throttle handle	A-63325-1	1
5	GASKET - carburetor	63254	2		Includes: BUSHING - pin	59064	1
6	SPACER - carburetor	66256	1	31	SCREW - pan, 8-32 x 1/2	80560	2
7	LINE - fuel	63335-A	1	32	HANDLE - throttle	A-63683	1
8	CARBURETOR	A-63448	1	33	Includes: BUMPER - rubber	56298	1
9	PIN - cotter	86324	1	34	PLUG	63848	2
10	ROD - choke	A-63337	1	35	PLUG	63847	2
11	NUT - cover mounting	A-63582-A	1	36	BUTTON	57289-1	1
12	COVER - air filter	63634-1	1	37	THROTTLE - trigger	58859	1
13	RING - retainer	58319-A	1	38	RING - retaining	58409	1
14	FILTER ELEMENT - air	63341	1	39	BUSHING - throttle handle	63400	2
15	GASKET - mounting nut	58392-1	1	40	GROMMET	58362	1
16	SCREW - hex, 12-24 x 1/2	80821	1	41	SCREW - hex, 12-24 x 7/8	80891	1
17	DEFLECTOR - air, w/bracket	A-63593	1	42	LEVER - oiler w/shaft	A-63327	1
18	WASHER - lock, #10	83046	2	43	GROMMET	59058	1
19	SCREW - hex, 10-32 x 2	80965	2	44	SCREW - idle adjustment	63369	1
20	ROD - throttle	63266	1	45	SCREW - sl. hex, 8-32 x 1/2	80983	2
21	BOOT - throttle rod	58348	1	46	SCREW - hex, 12-24 x 5/8	80676	4
22	BODY - oil pump	63343-2	1	47	VALVE - check	A-59456-A	1
23	SPRING - plunger	59293	1	48	VALVE - check	A-63432	1
24	PLUNGER - oil pump	A-57834-14	1	49	LINE - oil	A-63298	1
	Includes: "O" RING - shaft	59074	1	50	LINE - oil	A-63299	1
25	"O" RING - plunger	74388	1	51	GASKET - cylinder	63778	1
26	LEVER - oiler	63280-2A	1	52	GASKET - throttle handle	63779	1

# HOMELITE XL-850 CHAIN SAWS



**FIGURE 4**

No.	Description	Part No.	Qty.			No.	Description	Part No.	Qty.
1	HANDLE BAR - flush cut	A-63485-2	1			14	PLATE - clutch	63053-2	1
	HANDLE BAR - wrap-around ①	A-63659	1			15	WASHER - thrust (outer)	63462	1
2	SCREW - socket, 1/4-20 x 1/2	80428	3			16	SPROCKET & DRUM		
3	BRACKET - handle bar (flush cut)	63011-3	1				Standard - 8 tooth, 3/8" pitch	A-63813	1
	BRACKET - handle bar (wrap-around) ①	63011-5	1				Optional - 8 tooth, .404 pitch	A-63465	1
4	BUMPER - spiked (optional)	63549	1			17	Includes: BEARING - needle	77442	1
5	SCREW - hex, 12-24 x 3/4	80867	as req'd.			18	RACE - inner	63588	1
6	PLATE - guide bar (inner)	58781	1				Optional (not shown)		
7	PLATE - guide bar (outer)	58782	1				SPROCKET & DRUM		
8	NUT - 5/16-18	81196	2				- 7 tooth, .404 pitch	A-64063	1
9	COVER - drivecase	63009-2	1				- 7 tooth, 3/8" pitch	A-64060	1
10	SCREW - button, 1/4-20 x 1/2	80985	3				BEARING - needle	64124	1
11	COVER - clutch	63051-1	1				RACE - inner	64129	1
12	SPRING - clutch	63977	3			19	WASHER - thrust (inner)	63463	1
13	SHOE - clutch	63957	3			20	WASHER - lock, #12	83056	2
						21	NUT - 12-24	81068	2

① Wrap around Handle Bar and special Bracket also requires #63660 Brace (not shown) mounted on drivecase cover. Attach Brace to Handle Bar with one #80867 screw.

### SPECIAL TOOLS available on order

Part No.	Description	Part No.	Description
A-23937-A	COMBINATION WRENCH	A-23934	WRENCH - spanner (clutch)
22828	PLIERS - piston snap ring	A-23841	WRENCH - insert (guide bar stud)
23528	WRENCH - socket screw (conn. rod)	A-23960	PULLER - rotor
23955	PLUG - bearing installation (conn. rod)	23819	PLUG - needle bearing (sprocket)
A-23965	JACKSCREW	23420	PLUG - bearing installation (sprocket)
23136-1	BODY - jackscrew	23956	PLUG - bearing and seal installation (back plate)
22820-4	COLLAR - bearing	A-23962	REMOVER - bearing (back plate)
23846-1	ANVIL - crankshaft installation	23846-2	ANVIL - bearing disassembling (back plate)
23971	SLEEVE - seal protecting (crankcase)	A-23951	PLUG - piston pin removal
23972	SLEEVE - seal installation (crankcase)		
23957	PLUG - seal installation (crankcase)		PAINT
23987	SHIM - magneto air gap		
24006-1	PLATE - shaft aligning	23343	SPRAY CAN - green
23968	ANVIL - roller bearing (back plate)	23560	SPRAY CAN - white

**You'll  
SPEED WORK  
and make  
MORE MONEY  
with...**

# HOMELITE

**SELF-PRIMING PUMPS**



**DEPENDABLE GENERATORS**



**POWERFUL ONE-MAN CHAIN SAWS**



**ONE-MAN CONCRETE VIBRATORS**



**ELECTRIC BUILDER'S HAMMERS**



Printed in United States of America

Part No. 24020

168

# HOMELITE

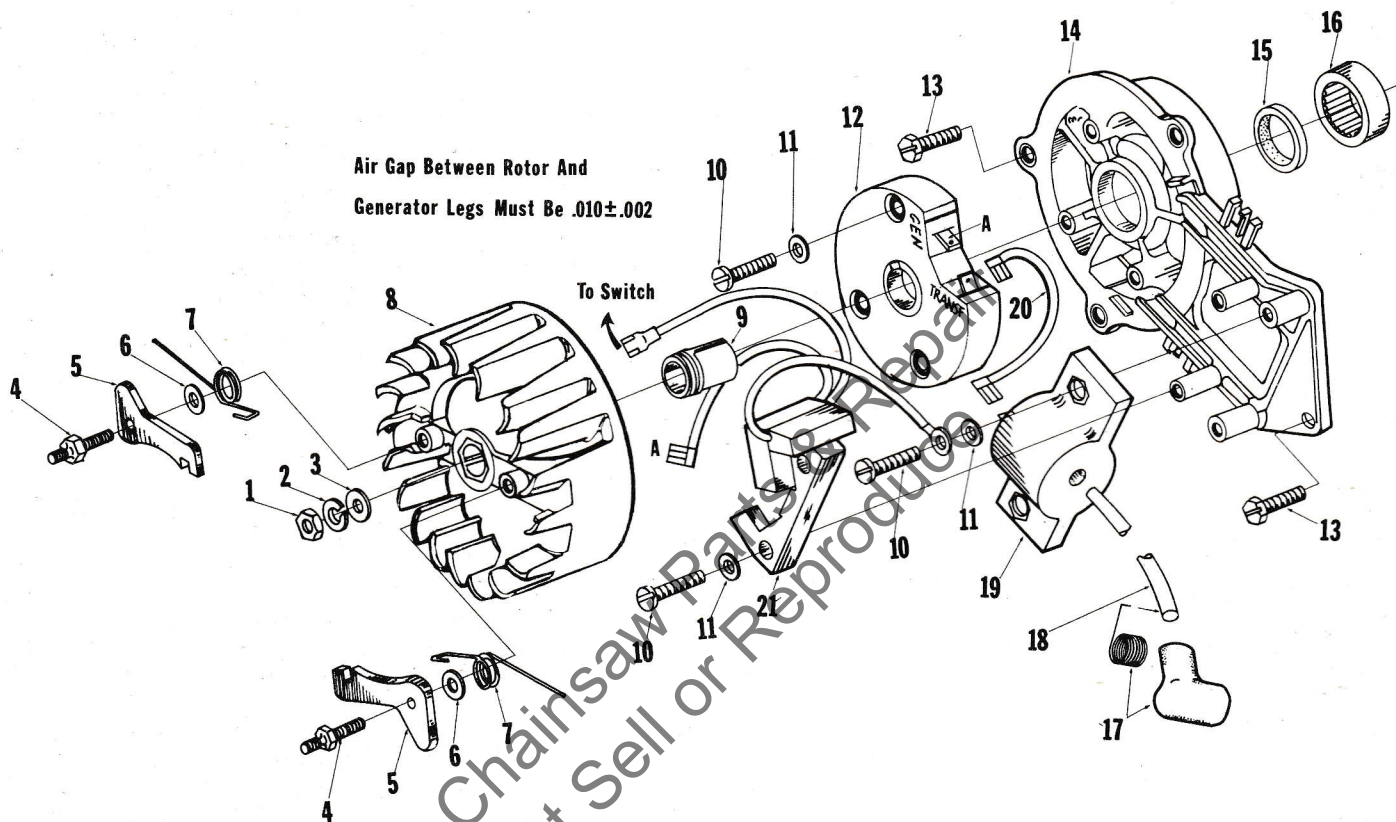
A **textron** DIVISION

PORT CHESTER, N. Y.

*Leon's Chainsaw Parts & Repair  
Do Not Sell or Reproduce*

# HOMELITE®

## CAPACITOR DISCHARGE MAGNETO XL-850, XL-875, \*XL-904



No.	Description	Part No.	Qty.	No.	Description	Part No.	Qty.
1	NUT-hex, 3/8-24	81124	1	11	WASHER-lock, #8	83106	7
2	WASHER-flat, 3/8	84010-1	1	12	MODULE-ignition	67162	1
3	WASHER-lock, 3/8	83102	1	13	SCREW-hex, 1/4-20x5/8-See Note 1	80048-1	4
4	STUD-shoulder	58757-B	2	*14	PLATE-back - See Note 1	A-67604	1
5	PAWL-starter	58756	2	15	Includes: SEAL	58688-A	1
6	WASHER	58851	2	16	BEARING-roller	63195	1
7	SPRING-starter pawl	58758	2	17	TERMINAL-spark plug	A-33055	1
8	ROTOR-magneto	67165	1	18	LEAD-high tension	67166	1
9	CAP-dust	64002	1	19	COIL-transformer	67164	1
10	SCREW-pan, 8-32 x 3/4	82178	7	20	LEAD-transformer	67167	1
				21	COIL-core and generator	67163	1

\*Denotes new part

Note 1 - Units below serial 3043434 must use Back Plate #A-67198, Backplate Retaining Screws (3) #65321 and (1) Hex Screw (12-24x11/16) #80751

A-67202 Complete Magneto ("CD" type) is available for these units.

### Tools

- 24302 PLUG-seal installation
- 24306 SHIM-plastic (air gap-black)
- 24304 BIT-#2 pozidriv

\*ABOVE SERIAL #3043434