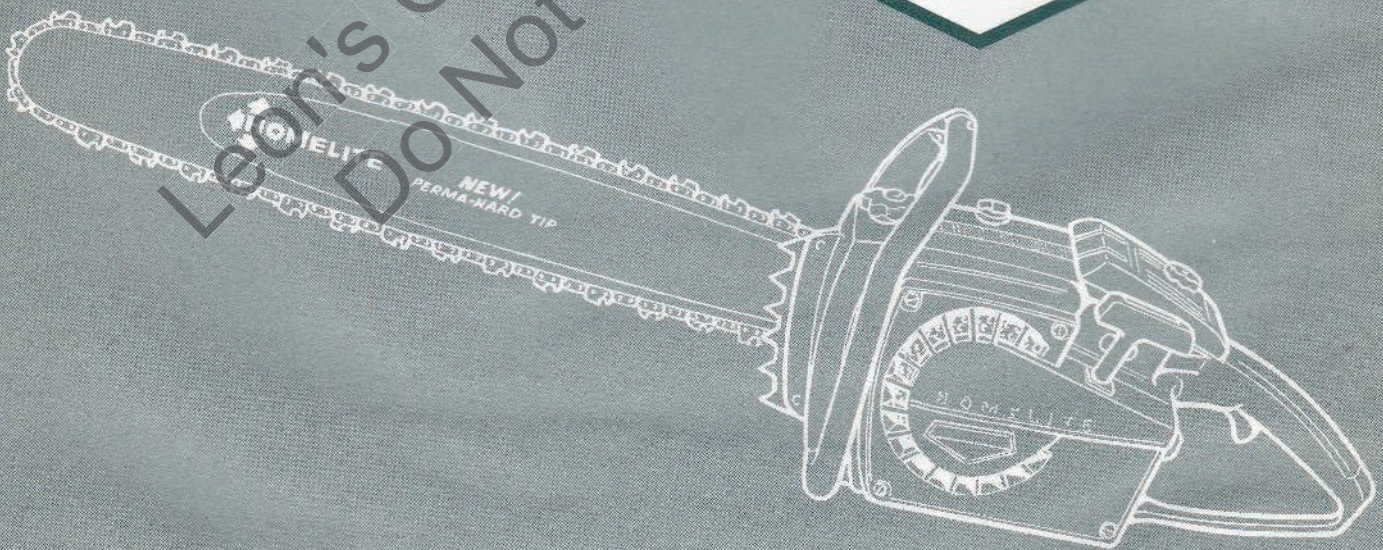


PRICE .25

# HOMELITE

## CHAIN SAW

**XL-800 AM**



**PARTS LIST**

# HOMELITE XL-800AM CHAIN SAWS

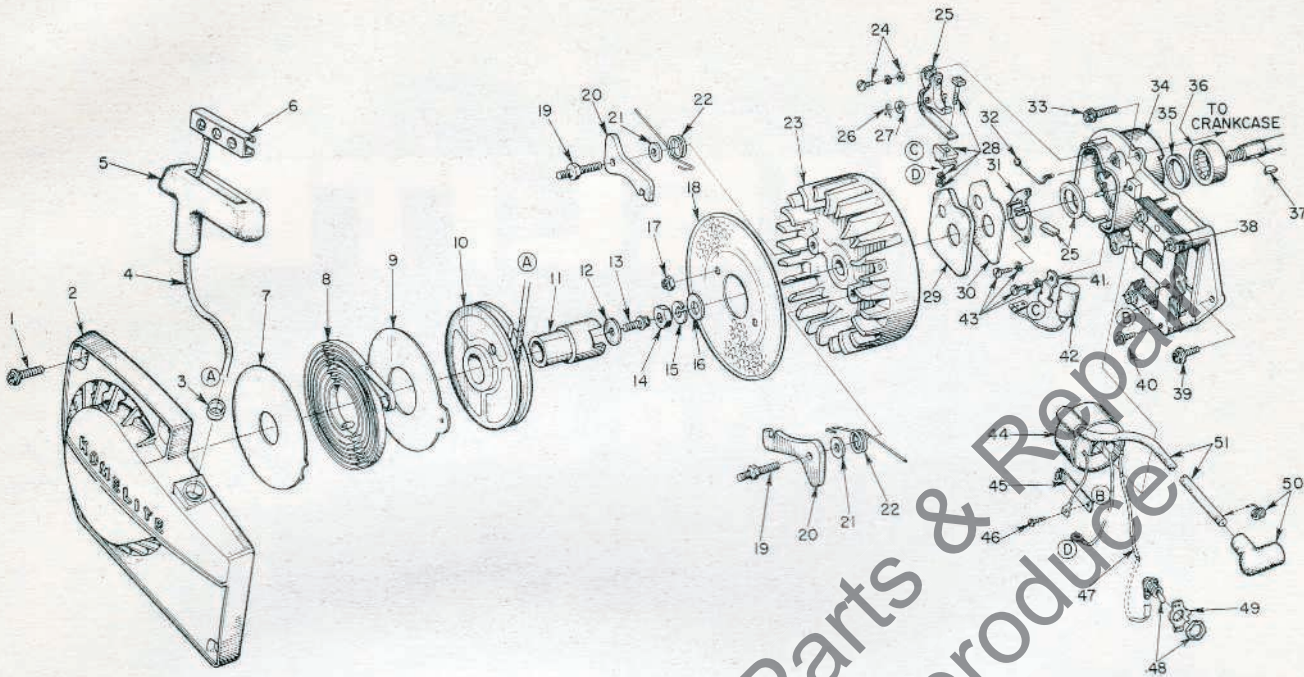


FIGURE 1

No.	Description	Part No.	Qty.	No.	Description	Part No.	Qty.
1	SCREW - hex, 12-24 x 5/8	80676	1	28	TERMINAL BLOCK GROUP	A-58934	1
2	HOUSING - fan	A-63320-1	1	29	COVER - breaker box	63317	1
3	Includes: BUSHING - rope	59311	1	30	GASKET - cover	63316	1
4	ROPE - starter	58806	1	31	RETAINER - felt	63628	1
5	GRIP - rope	58915	1	32	SPRING - cover (clip)	76413	1
6	INSERT	58825	1	33	SCREW - hex, 12-24 x 11/16	80751	3
7	SHIELD - spring (inner)	63566	1	34	PLATE - back	A-63633	1
8	SPRING - rewind	63268	1	35	Includes: SEAL	58688-A	1
9	SHIELD - spring (outer)	63565-A	1	36	BEARING - roller	63195	1
10	PULLEY - starter	58759-1	1	37	KEY	75078	1
11	CUP - starter	58760	1	38	CORE - coil	63630	1
12	WASHER - retaining	58763	1	39	SCREW - hex, 12-24 x 9/16	80899	1
13	SCREW - hex	80648	1	40	SCREW - core	64021	4
14	NUT - hex, 3/8-24	81124	1	41	CLAMP - condenser	63627	1
15	WASHER - lock, 3/8	63102	1	42	CONDENSER - ignition	63626	1
16	WASHER - flat, 3/8	64010-1	1	43	SCREW	55411	3
17	NUT - lock, 1/2-32	81109-2	2	44	COIL - ignition	63625	1
18	SCREEN - air	64137-A	1	45	CLIP - coil retaining	63726	1
19	STUD - pawl	58757-B	2	46	SCREW - coil clip	58872	1
20	PAWL - starter (finger)	58756	2	47	LEAD - ground	A-59031	1
21	WASHER	58851	2	48	SWITCH - w/nut	A-57650-3	1
22	SPRING - pawl	58758	2	49	PLATE - "ON-OFF"	72085-A	1
23	ROTOR	63406	1	50	TERMINAL - spark plug	A-33055	1
24	SCREW GROUP - points	76421	1	51	LEAD - high tension	63632	1
25	POINT SET - w/felts	A-63631	1				
26	Includes: CLIP - post	28008	1				
27	WASHER - point	28028	1				

# HOMELITE XL-800AM CHAIN SAWS

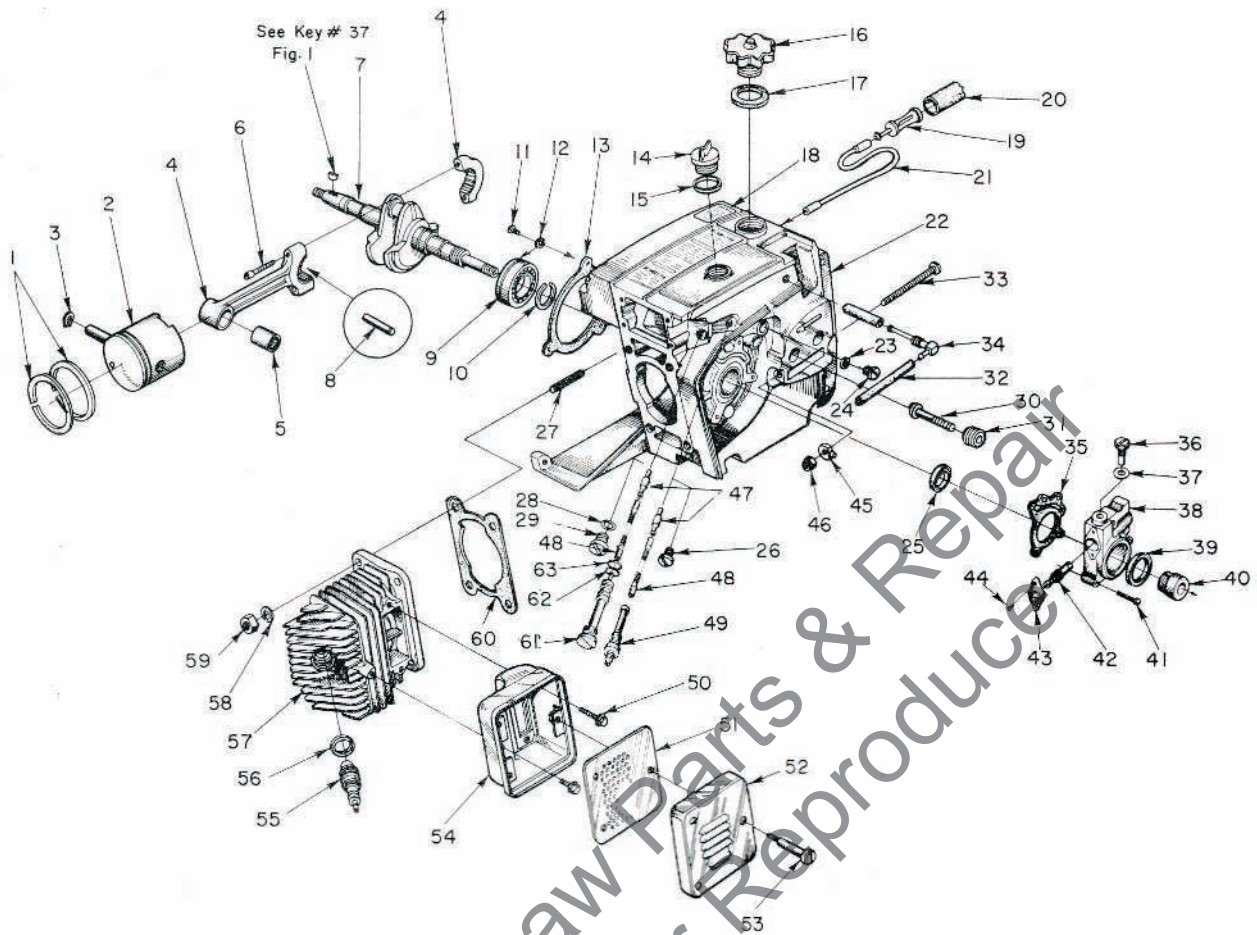


FIGURE 2

No.	Description	Part No.	Qty.	No.	Description	Part No.	Qty.
1	RING - piston (2-1/16" bore)	55567	1	33	SCREW - guide bar adjusting	63367	1
2	PISTON & PIN - 2-1/6" bore	A-63781	1	34	FITTING - elbow	63297-A	1
3	Includes: RING - retaining	55095	1	35	GASKET - oil pump	63471-A	1
4	ROD - connecting	A-63309	1	36	SCREW - cam	59737	1
5	Includes: BEARING - needle	59351	1	37	GASKET	59736	1
6	SCREW - socket cap, 8-32 x 9/16	80905	2	38	HOUSING - automatic oiler	A-63461-B	1
7	CRANKSHAFT	59625-2	1	39	SEAL - felt	59926	1
8	BEARING - needle (set 28)	A-63397	1	40	GEAR - worm	59675	1
9	BEARING - ball	58190-S	1	41	SCREW - fil. hd. 8-32 x 3/4	80248	3
10	RING - retaining	58319-A	1	42	PLUNGER - gear	63760	1
11	SCREW - bearing retaining	59704	2	43	BEARING - flanged	59719	1
12	WASHER - lock	59705	2	44	SCREW - pan, 4-40 x 1/4	80919	2
13	GASKET - sealing	63319	1	45	PIN - guide bar adjusting	58783	1
14	CAP - oil (vented)	A-63717	1	46	NUT - lock, 1/4-20	81108	1
15	Includes: GASKET	56607	1	47	FILTER - oil	A-64293	2
	(not shown) VALVE - vent	63718	1	48	LINE - oil pick-up	59000	2
	(not shown) COLLAR - retaining	63719	1	49	CONNECTOR - oil filter	59937	1
16	CAP - fuel	A-64140-A	1	50	SCREW - hex, 12-24 x 5/8	80978	3
17	Includes: GASKET	58957	1	51	BAFFLE - muffler	63521-A	1
18	DECAL - caution	64144	1	52	CAP - muffler	63520-1	1
19	FILTER ASSEMBLY	A-59251	1	53	SCREW - shoulder	63855	3
20	Includes: FILTER	59253	1	54	BODY - muffler	A-63535-1A	1
21	LINE - flexible	55805	1	55	SPARK PLUG	63547-S	1
22	CRANKCASE & TANKS	A-63682-C	1	56	Includes: GASKET	25038	1
23	Includes: GASKET	58338	1	57	CYLINDER - 2-1/16" bore	63012-1	1
24	CAP	58339	1	58	NUT - hex, 1/4 x 28	81065-2	4
25	SEAL	58688-A	1	59	WASHER - lock, 1/4	83009	4
26	PLUG - pipe	28097	1	60	GASKET - cylinder	63778	1
27	STUD	55871	4	61	TUBE - oil line	63452-A	1
28	WASHER	58138	1	62	"O" RING	58406	1
29	CAP	63115	1	63	GASKET - oil line tube	63751	1
30	STUD - guide bar	59764-A	2				
31	INSERT - threaded	59896	2				
32	LINE - fuel	63335-A	1				

ACCESSORY

A-63540-A SPARK ARRESTOR

ALWAYS FURNISH MODEL AND SERIAL NUMBER WHEN ORDERING PARTS.

# HOMELITE XL-800AM CHAIN SAWS

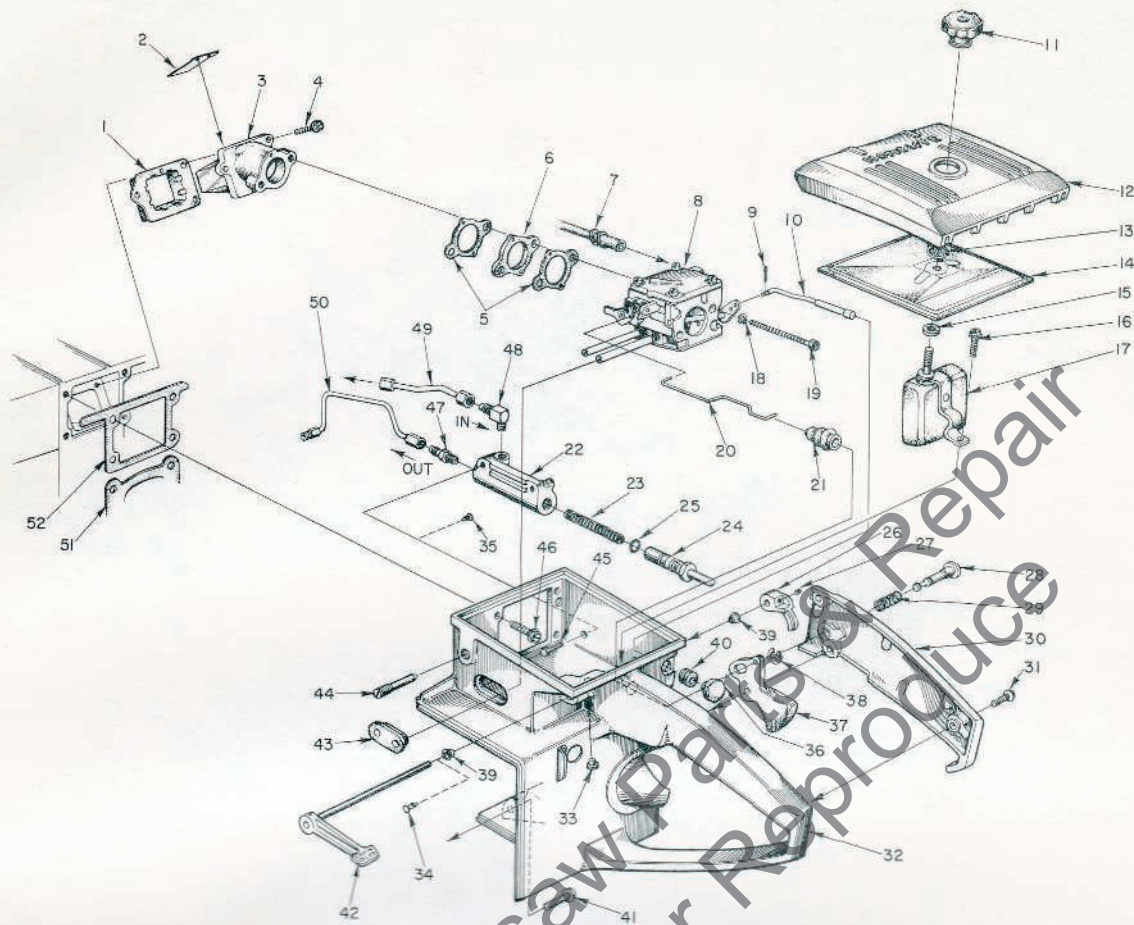


FIGURE 3

No.	Description	Part No.	Qty.	No.	Description	Part No.	Qty.
1	RETAINER - reed valve	63330	1	27	SCREW - socket, set, 6-32 x 1/4	80989	1
2	VALVE - reed	63166	4	28	PIN - throttle lock	58924	1
3	SEAT - reed valve	A-63307	1	29	SPRING - lock	58405	1
4	SCREW - pan, 8-32 x 1/2	63779	3	30	COVER - throttle handle	A-63325-1	1
5	GASKET - carburetor	63254	2		Includes: BUSHING - pin	59064	1
6	SPACER - carburetor	63256	2	31	SCREW - pan, 8-32 x 1/2	80560	2
7	LINE - fuel	63335-A	1	32	HANDLE - throttle	A-63683	1
8	CARBURETOR	A-63335	1	33	Includes: BUMPER - rubber	56298	1
9	PIN - cotter	86324	1	34	PLUG	63848	2
10	ROD - choke	A-63337	1	35	PLUG	63847	2
11	NUT - cover mounting	A-60582-A	1	36	BUTTON	57289-1	1
12	COVER - air filter	63634-1	1	37	THROTTLE - trigger	58859	1
13	RING - retainer	58319-A	1	38	RING - retaining	58409	1
14	FILTER ELEMENT - air	63341	1	39	BUSHING - throttle handle	63400	2
15	GASKET - mounting nut	58392-1	1	40	GROMMET	58362	1
16	SCREW - hex, 12-24 x 1/2	80821	1	41	SCREW - hex, 12-24 x 7/8	80891	1
17	DEFLECTOR - air, w/bracket	A-63593	1	42	LEVER - oiler w/shaft	A-63327	1
18	WASHER - lock, #10	83046	2	43	GROMMET	59058	1
19	SCREW - hex, 10-32 x 2	80965	2	44	SCREW - idle adjustment	63369	1
20	ROD - throttle	63266	1	45	SCREW - sl. hex, 8-32 x 1/2	80983	2
21	BOOT - throttle rod	58348	1	46	SCREW - hex, 12-24 x 5/8	80676	4
22	BODY - oil pump	63343-2	1	47	VALVE - check	A-59456-A	1
23	SPRING - plunger	59293	1	48	VALVE - check	A-63432	1
24	PLUNGER - oil pump	A-57834-14	1	49	LINE - oil	A-63298	1
	Includes: "O" RING - shaft	59074	1	50	LINE - oil	A-63299	1
25	"O" RING - plunger	74388	1	51	GASKET - cylinder	63778	1
26	LEVER - oiler	63280-2A	1	52	GASKET - throttle handle	63779	1

# HOMELITE XL-800AM CHAIN SAWS

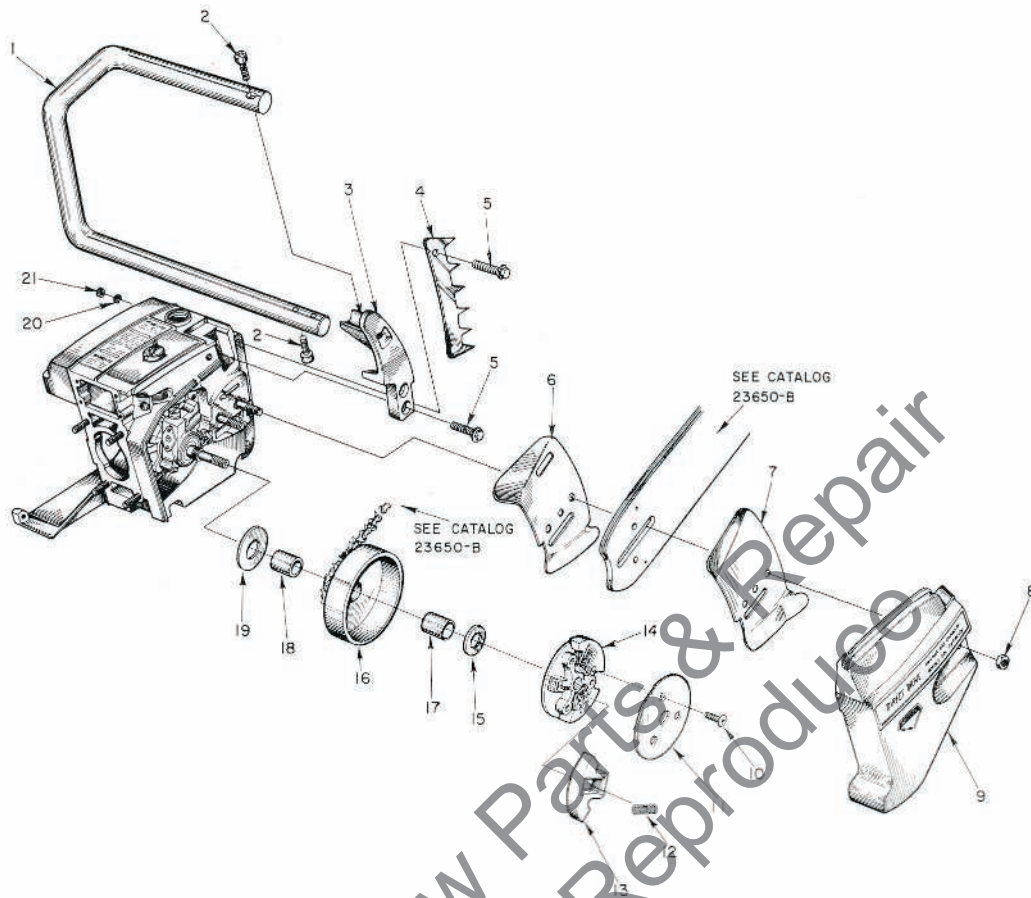


FIGURE 4

No.	Description	Part No.	Qty.	No.	Description	Part No.	Qty.
1	HANDLE BAR - flush cut	A-63495-2 A	1	14	PLATE - clutch	63053-2	1
2	HANDLE BAR - wrap-around	A-63659-A	1	15	WASHER - thrust (outer)	63462	1
3	SCREW - socket, 1/4-20 x 1	80428	3	16	SPROCKET & DRUM		
4	BRACKET - handle bar (flush cut)	63011-3	1		Standard - 8 tooth, 3/8" pitch	A-63813	1
5	BRACKET - handle bar (wrap-around)	63911-5	1		Optional - 8 tooth, .404 pitch	A-63465	1
6	BUMPER - spiked (optional)	63743	1	17	Includes: BEARING - needle	77442	1
7	SCREW - hex, 12-24 x 3/4	80867	as req'd.	18	RACE - inner	63588	1
8	PLATE - guide bar (inner)	58751	1		Optional (not shown)		
9	PLATE - guide bar (outer)	58752	1		SPROCKET & DRUM		
10	NUT - 5/16-18	81196	2		- 7 tooth, .404 pitch	A-64369	1
11	COVER - drivecase	63009-2	1		- 7 tooth, 3/8" pitch	A-64368	1
12	SCREW - button, 1/4-20 x 1/2	80985	3		Includes: BEARING - needle	64124	1
13	COVER - clutch	63051-1	1		RACE - inner	64129	1
		63977	3	19	WASHER - thrust (inner)	63463	1
		63957	3	20	WASHER - lock, #12	83056	2
				21	NUT - 12-24	81068	2

① Wrap around Handle Bar and special Bracket also requires #63660 Brace (not shown) mounted on drivecase cover. Attach Brace to Handle Bar with one #80867 screw.

## SPECIAL TOOLS available on order

Part No.	Description	Part No.	Description
A-23937-A	COMBINATION WRENCH	A-23934	WRENCH - spanner (clutch)
22828	PLIERS - piston snap ring	A-23841	WRENCH - insert (guide bar stud)
23528	WRENCH - socket screw (conn. rod)	A-23960	PULLER - rotor
23955	PLUG - bearing installation (conn. rod)	23819	PLUG - needle bearing (sprocket)
A-23965	JACKSCREW	23420	PLUG - bearing installation (sprocket)
23136-1	BODY - jackscrew	23956	PLUG - bearing and seal installation (back plate)
22820-4	COLLAR - bearing	A-23962	REMOVER - bearing (back plate)
23846-1	ANVIL - crankshaft installation	23846-2	ANVIL - bearing disassembling (back plate)
23971	SLEEVE - seal protecting (crankcase)	A-23951	PLUG - piston pin removal
23972	SLEEVE - seal installation (crankcase)		
23957	PLUG - seal installation (crankcase)		PAINT
23987	SHIM - magneto air gap		
24006-1	PLATE - shaft aligning	23343	SPRAY CAN - green
23968	ANVIL - roller bearing (back plate)	23560	SPRAY CAN - white

ALWAYS FURNISH MODEL AND SERIAL NUMBER WHEN ORDERING PARTS.

# HOMELITE

Leon's Chainsaw Parts & Repair  
Do Not Sell or Reproduce



Printed in United States of America

Part No. 24056

1066

# HOMELITE

A **textron** DIVISION

PORT CHESTER, N. Y.