

PRICE .25¢

# PARTS LIST

# HOMELITE

## XL-75

### CHAIN SAW

Leon's Chainsaw Parts & Repair  
Do Not Sell or Reproduce



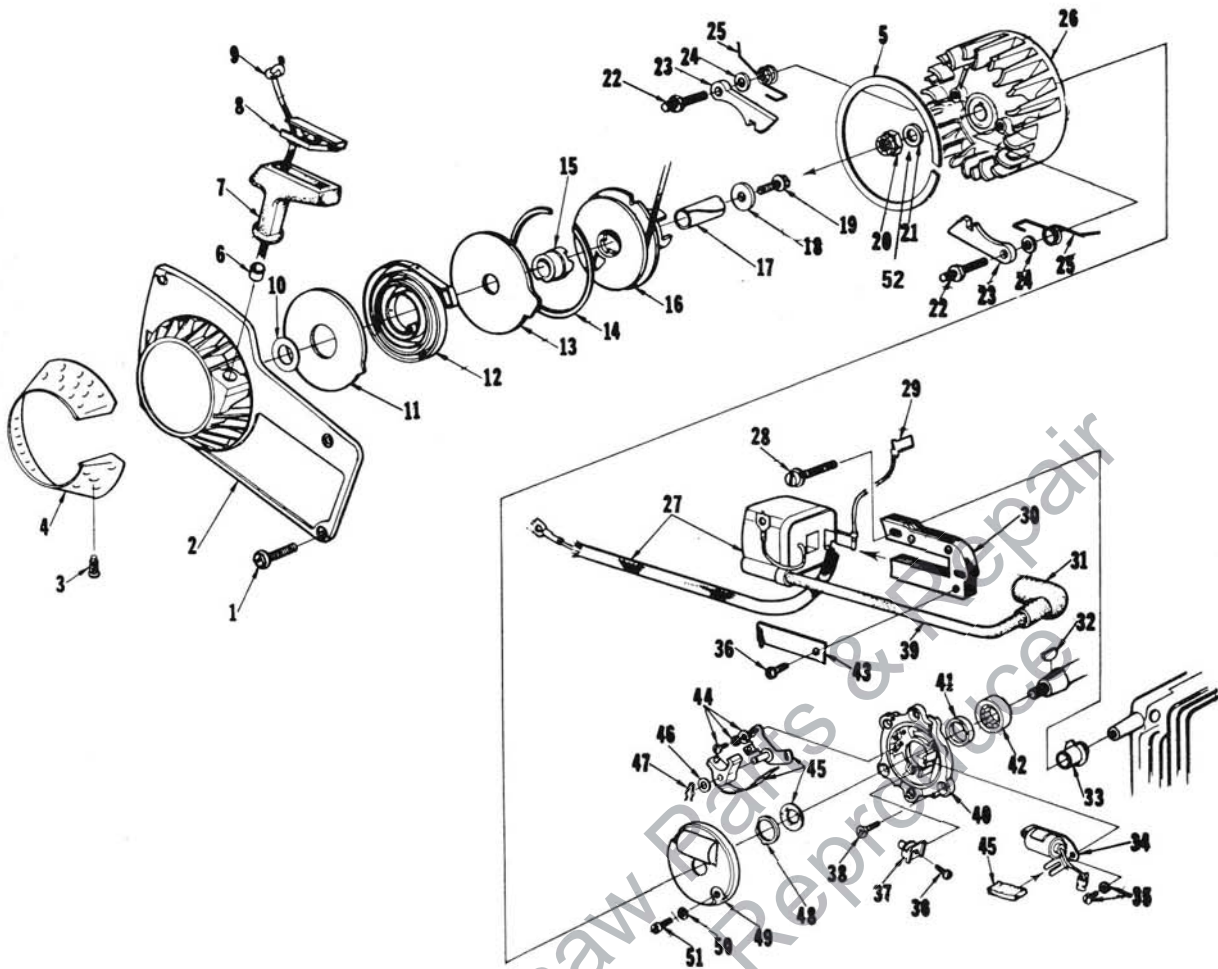
**TERRY INDUSTRIES**

A DIVISION OF **textron** CANADA, LIMITED

180 Labrosse, Ave., Pointe Claire, Que.



# XL-75

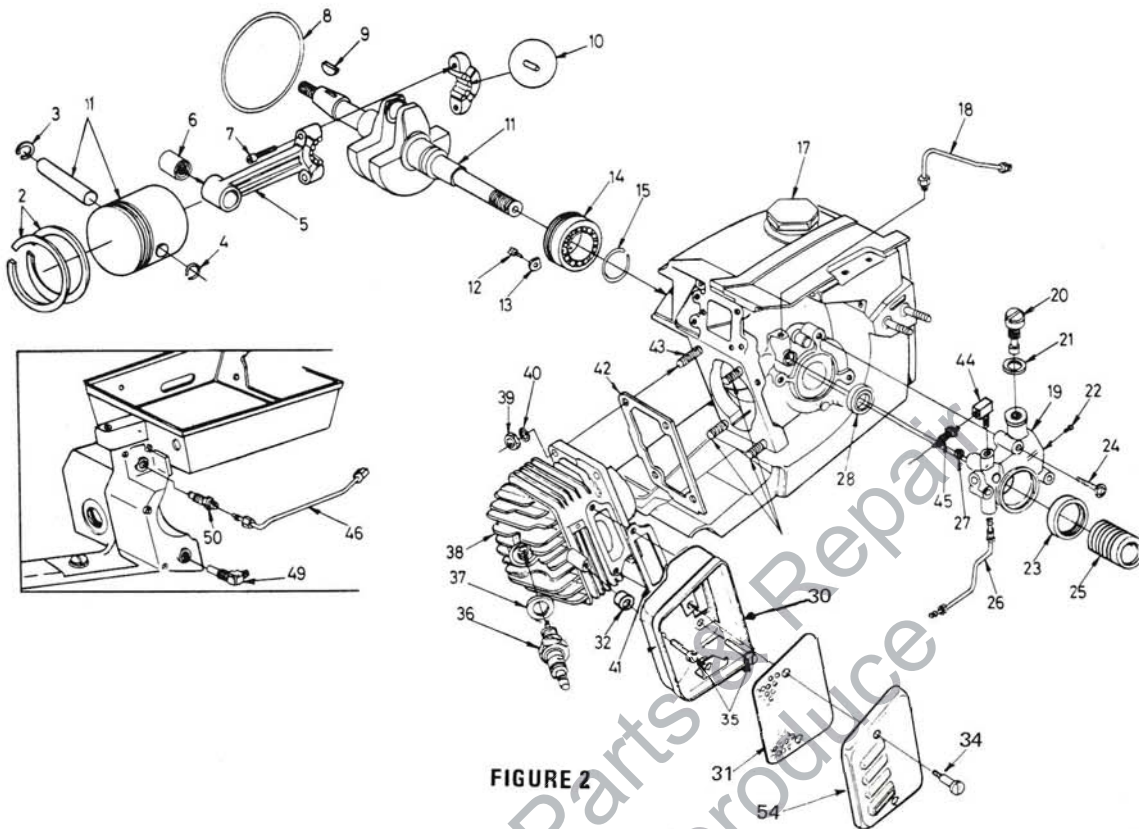


**FIGURE 1**

No.	Description	Part No.	Qty.	No.	Description	Part No.	Qty.
1	SCREW-hex, 10-32 x 1/2	80648	4	27	COIL-ignition	A-122454	1
2	HOUSING-fan	A-67192-A	1	28	SCREW-coil core	82248	2
3	Includes: STUD-drive	67191	4	29	LEAD-ground to switch	A-63939	1
4	SCREEN-fan housing	65491	1	30	CORE-coil	54422	1
5	RING-air flow	67222	1	31	TERMINAL-spark plug	A-33055	1
6	BUSHING-starter rope	67177	1	32	KEY-woodruff	75078	1
7	GRIP-starting rope	64155-B	1	33	RETAINER-lead	64301	1
8	INSERT-rope retaining	68837-AT	1	34	CONDENSER & CLAMP	64086	1
9	ROPE-starter	63869	1	35	SCREW-condenser clamp	55411	2
10	WASHER	67185	1	36	SCREW	64090	2
11	SHIELD-spring (inner)	63713	1	37	BLOCK-terminal	64088	1
12	SPRING-rewind	63870	1	38	SCREW-back plate retainer	65321	5
13	SHIELD-spring (outer)	63714	1	39	LEAD-high tension	58966	1
14	RING-shield retaining	63875	1	40	PLATE-back	A-68142	1
15	LOCK-spring	64948	1	41	Includes: SEAL	12282-A	1
16	PULLEY & CUP ASSEMBLY	A-63952-T	1	42	BEARING-roller	67395	1
17	BUSHING-starter post	64374	1	43	CLIP-coil retaining	54423	1
18	WASHER-retaining	63606	1	44	SCREW-breaker clamp	55411	2
19	SCREW-hex, 10-32 x 1/2	80648	1	45	POINT-set w/felt	A-64087	1
20	NUT-jam, 5/16-24	122168	1	46	Includes: WASHER-post	28028	1
21	WASHER-flat, 5/16	84065-1	1	47	CLIP-post	28008	1
22	STUD-shoulder	63877-B	2	48	RETAINER-felt	64089	1
23	PAWL-starter	64442	2	49	COVER-breaker box	A-63928	1
24	WASHER-lock	83056	2	50	WASHER-flat #6	84018	2
25	SPRING-starter pawl	65375-1	2	51	SCREW-cover	64085	2
26	ROTOR-magneto	63637	1	52	WASHER, lock	83030	1



# XL-75

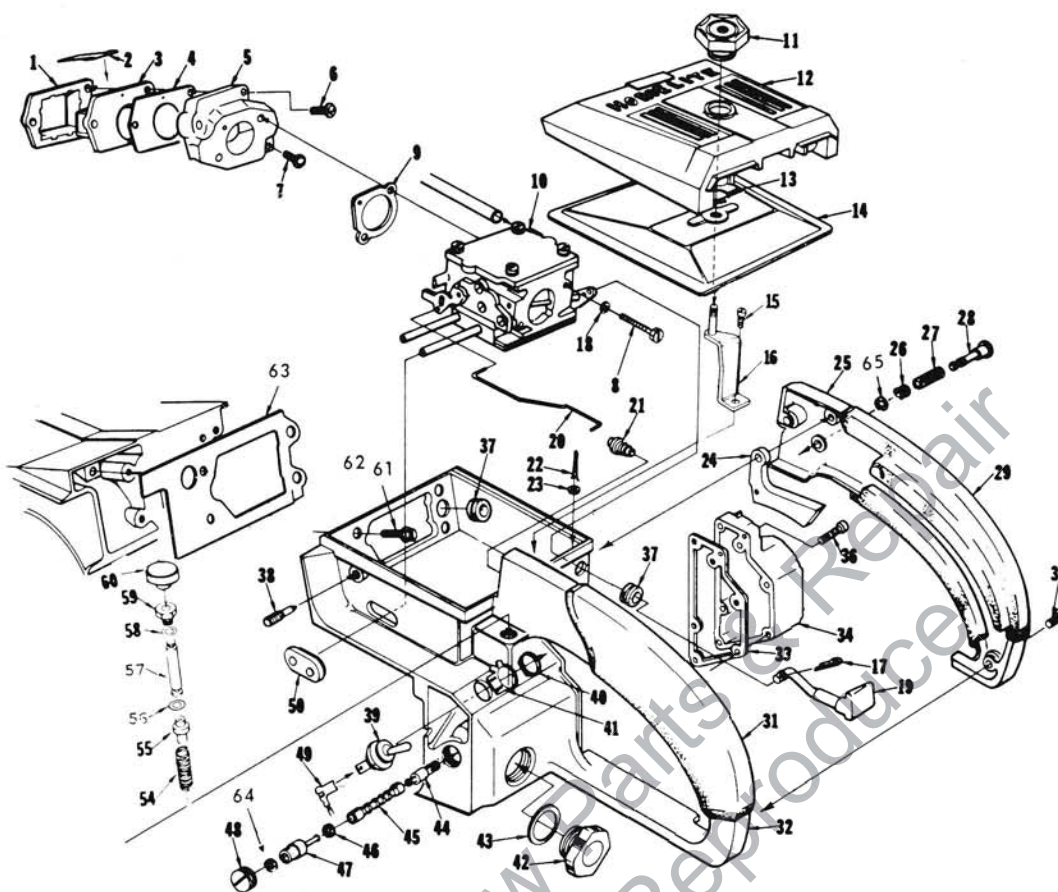


**FIGURE 2**

No.	Description	Part No.	Qty.	No.	Description	Part No.	Qty.
1	PISTON & PIN Includes:	A-121690	1	27	"O" RING	59074	1
2	PISTON RING	59436	2	28	SEAL	58308-B	1
3	RING-retaining	75120	1	29	STUD-cylinder (short)	55871	3
4	RING-piston pin retaining	64813	1	30	BODY-muffler	A-64130-2	1
5	ROD-connecting Includes:	A-68498-A	1	31	BAFFLE-muffler	64126	1
6	BEARING-needle	67408	1	32	WASHER	84008	1
7	SCREW	80541	2	34	SCREW-shoulder	64133-A	2
8	"O" RING	58785	1	35	SCREW-hex, 12-24 x 5/8	80676	3
9	KEY-Woodruff	75078	1	36	SPARK PLUG (J-7)	122066	1
10	ROLLER-needle (set of 25)	A-69050	1	37	Includes: GASKET	25038	1
11	CRANKSHAFT	68730	1	38	CYLINDER	A-122325-A	1
12	SCREW-Bearing retainer	59704	2	39	NUT-hex, 1/4-28	81065-2	4
13	WASHER-special	63905	2	40	WASHER-lock, 1/4	83009	4
14	BEARING-ball	63865	1	41	GASKET	121474	1
15	RING-retaining	58319-A	1	42	GASKET-cylinder	65829	1
17	CAP-fuel filler	A-69500	1	43	STUD-cylinder (long)	63868	1
18	LINE-oil (Auto. upper)	A-63919	1	44	CONNECTOR-elbow	31734	1
19	PUMP-automatic oil Includes: Item 46	A-122342	1	45	FITTING-straight	65696	1
20	SCREW-cam	64102-A	1	46	LINE-oil (manual)	A-122198	1
21	GASKET	59736	1	49	FILTER-oil	A-64741-T	1
22	SCREW-pan, 4-40 x 1/4	80919	2	50	VALVE-check	A-65948-1	1
23	SEAL-felt	64393	1	51	WASHER-Tab	122159	1
24	SCREW-pan 8-32 x 7/8	80568	3	52	SCREW-Hex (#12-24 x 1")	122307	1
25	WORM-oil pump	63228	1	53	PLATE-Muffler	122302	1
26	LINE-oil (auto. lower)	A-121734	1	54	CAP-Muffler	64125-1	1

SPECIAL TOOLS (available on order)					
A-122140	WRENCH-combination	23846-2	ANVIL-roller bearing disassembly	A-24057	BEARING REMOVER- (back plate)
228 20-5	COLLAR-bearing installation (bearing to shaft)	A-122055	PULLER	24076	SLEEVE-seal protection (crankcase side)
228 28	PLIERS-retaining ring	A-23949	TOOL-piston pin removal	24230	DRIVER-hand, pozidriv
23136-1	SLEEVE-bearing and shaft installation	A-23960	BRACKET-rotor removal	24173	DRIVER-check valve installation
235 28	WRENCH-socket screw (connecting rod)	23972	SLEEVE-seal installation	120875	BIT-pozidriv No. 2
23756	PLUG-needle bearing (connecting rod)	24006-2	PLATE-shaft alignment	<b>ACCESSORIES</b>	
23759	SLEEVE-seal protection (back plate)	A-24051	JACKSCREW (bearing to shaft to crankcase)	65543-1	HEAT EXCHANGER
		24054	PLUG-seal assembly (crankcase)	<b>PAINT</b>	
		24055	PLUG-bearing and seal assembly (back plate)	23475	SPRAY CAN-red paint

# XL-75



**FIGURE 3**

No.	Description	Part No.	Qty.	No.	Description	Part No.	Qty.
1	RETAINER-reed valve	64253-A	1	32	HANDLE-throttle	A-68483-T	1
2	REED-valve	59678-B	4		Includes:		
3	SEAT-reed valve	64252-A	1	33	GASKET-oil tank	67265	1
4	GASKET-reed valve seat	64266	1	*34	COVER-oil tank	A-68120-A	1
5	MANIFOLD-intake	A-67502-A	1		Includes: PLUG-pipe (not shown)	59571	1
6	Includes: SCREW-pan, 8-32 x 1-1/4	82174	2	36	SCREW-fil, 8-32 x 3/4	82156	6
7	SCREW-pan, 8-32 x 1	82173	1	37	GROMMET	64862	2
8	SCREW-hex, 10-32 x 1-7/8	82179	2	38	SCREW-idle adjustment	65522	1
9	GASKET-carburetor	67631	1	39	SWITCH	A-63938	1
10	CARBURETOR	A-68402	1	40	Includes: NUT	72084-A1	1
11	NUT-cover mounting	A-67627	1	41	PLATE-"On-Off"	63910	1
12	COVER-air filter	63183-4	1	42	CAP-oil (vented)	A-65284-AT	1
13	RING-retaining	58319-A	1	*43	Includes: Gasket	69834	1
14	FILTER ELEMENT-air	A-63955-T	1	*	VALVE-vent (not shown)	69451	1
15	SCREW-hex, 12-24 x 1/2	80821	1	44	FILTER-oil (manual)	A-64293	1
16	BRACKET-air filter cover	A-63576	1	45	LINE-flexible oil	64356	1
17	PIN-cotter	86324	1	46	GASKET	59736	1
18	WASHER-lock, #10	83046	2	47	FITTING-check valve	A-63936	1
19	ROD-choke	67000-1	1	48	SCREW-set	63113	1
20	ROD-throttle	63896-A	1	49	LEAD-ground	A-63939	1
21	BOOT-throttle rod	67634	1	50	GROMMET-"Hi-Lo"	58858	1
22	PIN-cotter	86301	1	54	SPRING-plunger	65080	1
23	WASHER-felt	63290	1	55	PLUNGER-oil pump	65081-AT	1
24	TRIGGER-throttle	63212-A	1	56	"O" RING	58406	1
25	COVER-throttle handle	63599-5	1	57	ROD plunger	A-121658	1
26	BUSHING-throttle lock	59064	1	58	Includes: "O" RING	59074	1
27	SPRING-throttle lock	58405	1	59	NUT-plunger	121293	1
28	PIN-throttle lock	58924-4	1	60	BUTTON-oil pump	57289-1	1
29	GRIP-throttle handle cover	68467	1	61	SCREW-hex, 12-24 x 5/8	80676	4
30	SCREW-pan, 8-32 x 1/2	80560	2	63	GASKET-throttle handle	64267-T	1
31	GRIP-throttle handle	68466	1	64	GROMMET	64474	1
				65	RING retaining	58409	1

\* Denotes new parts

ALWAYS FURNISH MODEL AND SERIAL NUMBER WHEN ORDERING PARTS.



# XL-75

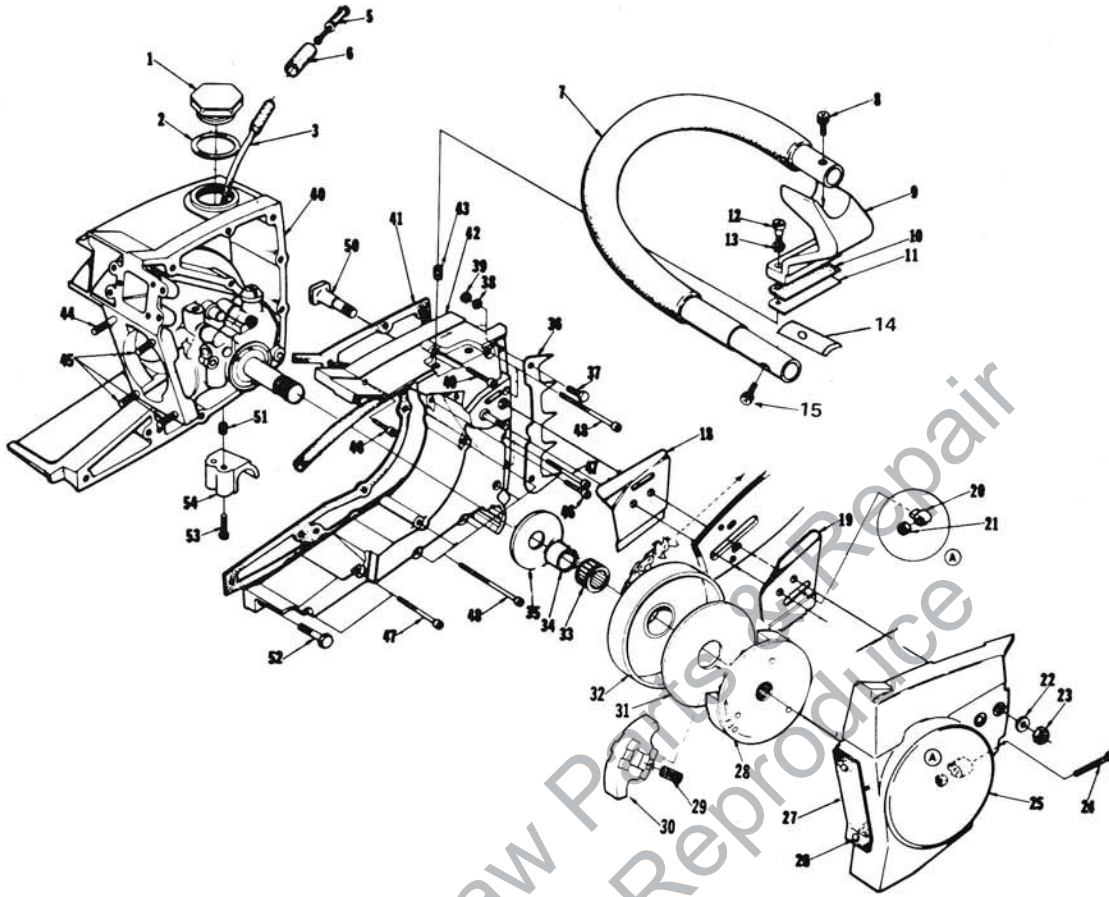
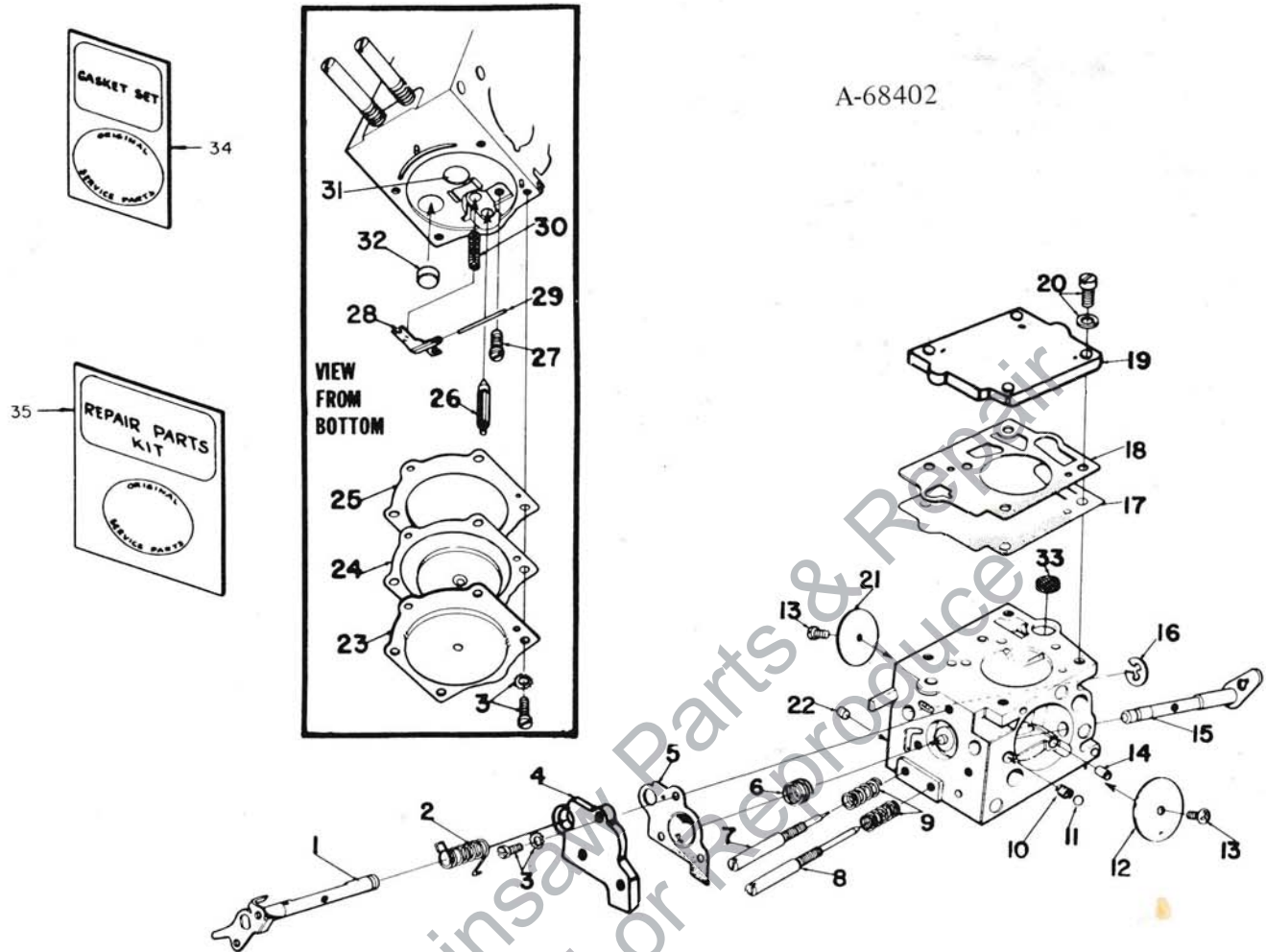


FIGURE 4

No.	Description	Part No.	Qty.	No.	Description	Part No.	Qty.
1	CAP-fuel filler	A-69500	1	33	BEARING-cage	64333	1
2	Includes: GASKET	69501	1	34	RACE-inner	63990	1
3	LINE-fuel	63544-A	1	35	WASHER-thrust (inner)	63860	1
5	FILTER-fuel	A-59251	1	36	BUMPER-spiked (optional)	A-64722	1
6	Includes: FILTER-felt	59253	1	37	Includes: SCREW-hex, 12-24 x 5/8	80676	2
7	HANDLE BAR-flush cut	A-122135	1	38	WASHER-lock, no. 12	83056	2
8	SCREW-Fil., 10-32 x 1	80041	1	39	NUT-hex, 12-24	81068	2
9	BRACKET-handle bar	A-68995	1	40	CRANKCASE & TANK	A-68439-AT	1
10	PAD-bracket	64610	1		Includes: PIN-dowel (not shown)	71430	2
11	PLATE-handle bar bracket	65586	1		PIN-dowel (not shown)	65365	2
12	SCREW-shoulder	68338	2		SEAL-(see fig. 2, Index No. 28)	58308-B	1
13	GROMMET-handle bar bracket	64474	2	41	GASKET-fuel tank	65364-A	1
14	SPACER	122132	1	42	COVER-fuel tank	A-68040-AT	1
15	SCREW-Fil., Hd. 1/4 - 20 x 1-1/8	122064	1		Includes:		
18	PLATE-guide bar (inner)	63638-B	1	43	INSERT-taplock	72489	2
19	PLATE-guide bar (outer)	63639-A	1	44	STUD-cylinder (long)	63868	1
20	PIN-bar adjusting	65768-1	1	45	STUD-cylinder (short)	55871	3
21	NUT-lock, 10-32	81109-2	1	46	SCREW-fil, 8-32 x 15/16	82151	2
22	WASHER-flat, 5/16	84032	2	47	SCREW-fil, 8-32 x 1-7/8	82154	3
23	NUT-hex, 5/16-18	81196	2	48	SCREW-fil, 8-32 x 2-3/16	82155	7
24	SCREW-guide bar adjusting	65175-A	1	49	SCREW-fil, 8-32 x 1-1/4	82152	1
25	COVER-drivecase	A-64620-2CT	1	50	BOLT-guide bar	67193	2
26	Includes: RIVET-oval head	85016	2	51	INSERT-taplock	72489	2
27	SHIELD-sawdust	64618	1	52	SCREW-hex, 12-24 x 7/8	80891	1
28	PLATE-clutch	64904-1	1	53	SCREW-pan, 10-32 x 5/8	80572	2
29	SPRING-clutch	65842	3	54	STOP-handle bar	67506-2	1
30	SHOE-clutch	64569-3	3				
31	COVER-clutch	69915	1				
32	SPROCKET & DRUM-3/8 pitch, 7 tooth	A-64908	1				

# XL-75

A-68402



WALBRO SDC-31

No.	Description	Part No.	Qty.	No.	Description	Part No.	Qty.
1	THROTTLE SHAFT ASSEMBLY	64225	1	19	COVER-fuel pump	67002	1
2	SPRING-throttle return	67006	1	20	SCREW-fuel pump cover	64694	4
3	SCREW ASSEMBLY	64689	7	*21	VALVE-throttle	67700	1
4	COVER-accelerator pump	67187	1	22	PLUG-limiting	64692	1
5	DIAPHRAGM-accelerator pump	67188	1	23	COVER	64224	1
6	SPRING-accelerator pump	69593	1	24	METERING DIAPHRAGM ASSEMBLY	64235	1
7	NEEDLE-idle	64241	1	25	GASKET-metering diaphragm	64231	1
8	NEEDLE-high speed	64242	1	26	VALVE-inlet needle	64229	1
9	SPRING-needle adjusting	64236	2	27	SCREW-metering lever pin	64688	1
10	SPRING-choke friction	64238	1	28	LEVER-metering	64245	1
11	BALL-choke friction	60051	1	29	PIN-metering lever	64244	1
12	VALVE-choke	64228	1	30	SPRING-metering lever	64237	1
13	SCREW-valve	64693	2	31	PLUG-welch (main)	65482	1
14	JET-idle air	64690	1	32	PLUG-welch (idle)	65481	1
15	CHOKE SHAFT ASSEMBLY	67109	1	33	SCREEN-fuel inlet	64243	1
16	RING-throttle shaft retaining	64221	1	34	GASKET SET	67019	1
17	DIAPHRAGM-fuel pump	64233	1	35	REPAIR KIT	69634	1
18	GASKET-fuel pump	67008	1		REPAIR KIT-check valve	65386	1

† Included in Repair Kit 69634