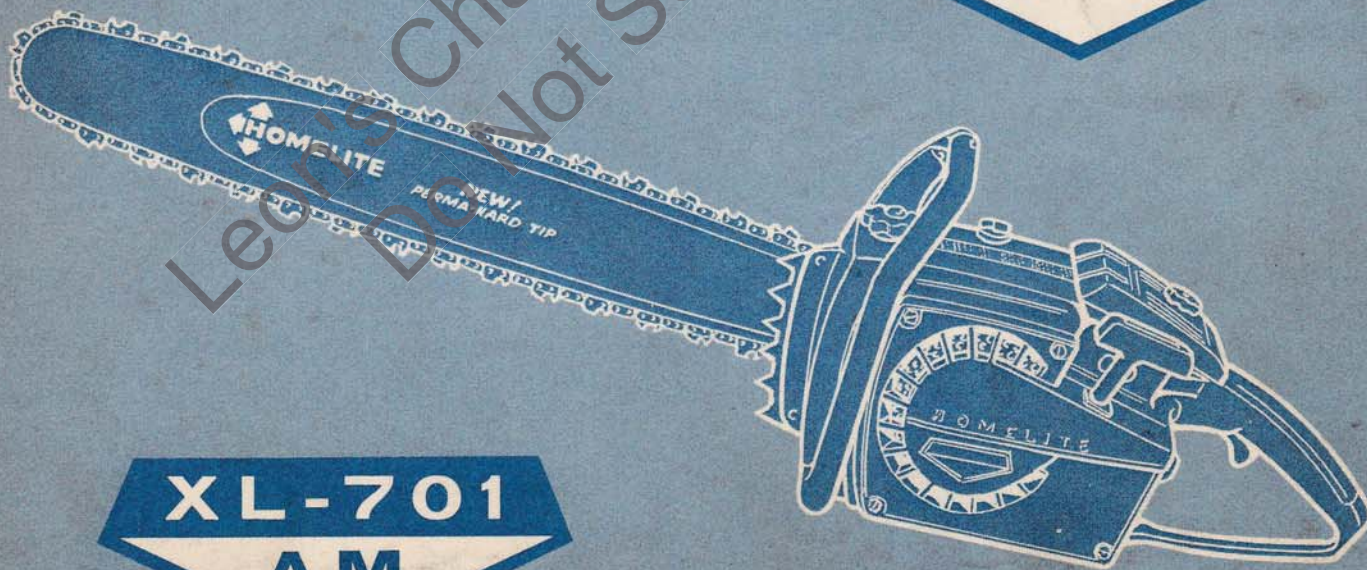


PRICE .25

# HOMELITE

## CHAIN SAWS

**XL-701**



**XL-701**  
**AM**

**PARTS LIST**



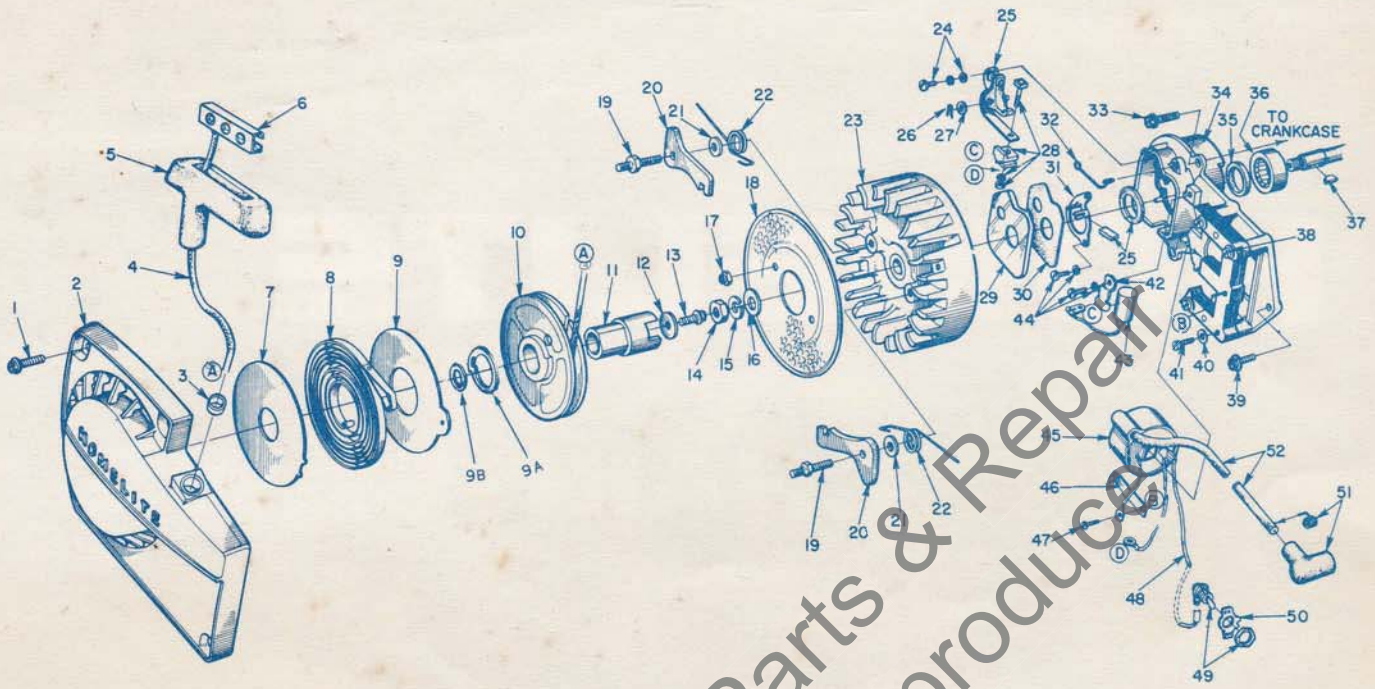


FIGURE 1

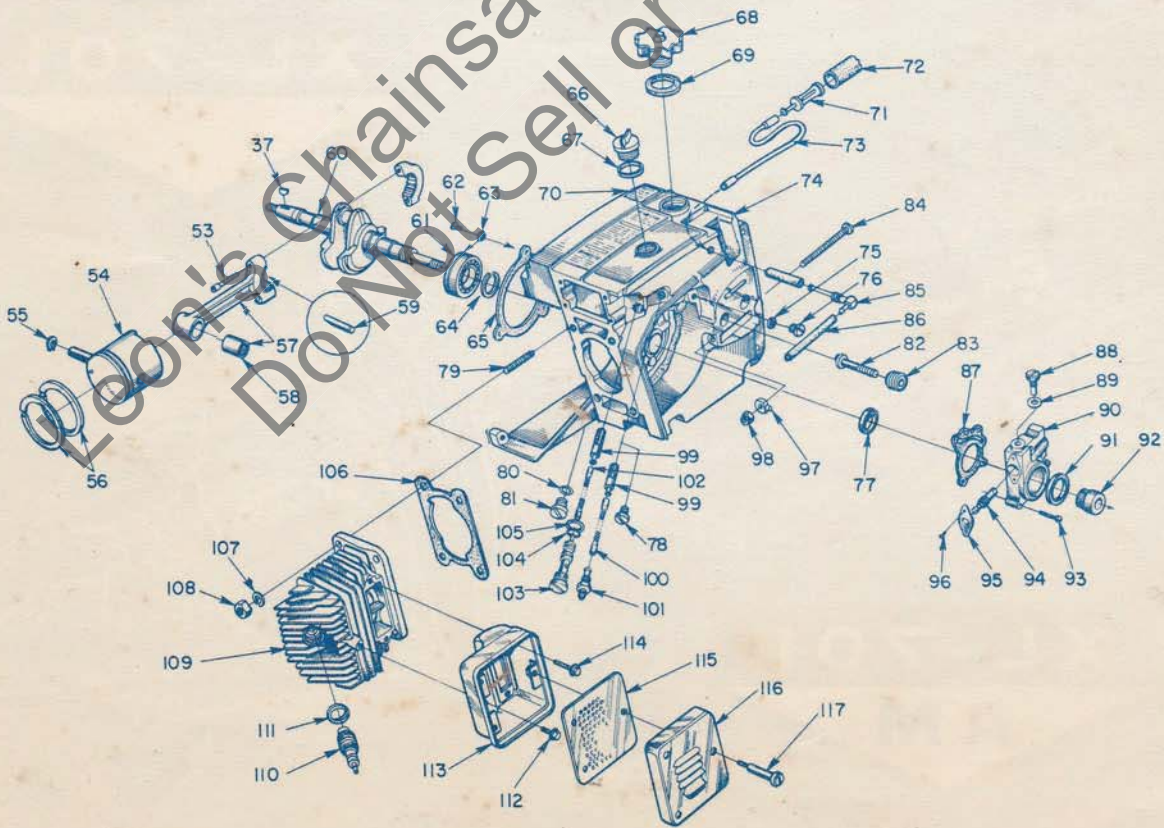


FIGURE 2

ALWAYS FURNISH MODEL AND SERIAL NUMBER WHEN ORDERING PARTS.



No.	Description	Part No.	Qty
1	SCREW - hex, 12-24 x 5/8	80676	4
2	HOUSING - fan	A-63330-1	1
3	Includes: BUSHING - rope	59313	1
4	ROPE - starter	58806	1
5	GRIP - rope	58915	1
6	INSERT	58847	1
7	SHIELD - spring (inner)	63566	1
8	SPRING - rewind	63268-A	1
9	SHIELD - spring (outer)	63565-A	1
9A	LOCK-SPRING	64049-A	1
9B	BUSHING-SPRING LOCK	64400	1
10	PULLEY - starter	64398-1	1
11	CUP - starter	64399	1
12	WASHER - retaining	58763	1
13	SCREW - hex	80648	1
14	NUT - hex, 3/8-24	81124	1
15	WASHER - lock, 3/8	83102	1
16	WASHER - flat, 3/8	84010-1	1
17	NUT - lock, 10-32	81109-2	2
18	SCREEN - air	64137-A	1
19	STUD - pawl	58757-B	2
20	PAWL - starter (finger)	58756	2
21	WASHER	58851	2
22	SPRING - pawl	58758	2
23	ROTOR	63406	1
24	SCREW GROUP - points	76421	1
25	POINT SET - w/felts	A-63631	1
26	Includes: CLIP - post	28008	1
27	WASHER - point	28028	1
28	TERMINAL BLOCK GROUP	A-58934	1
29	COVER - breaker box	63317	1
30	GASKET - cover	63316	1
31	RETAINER - felt	63628	1
32	SPRING - cover (clip)	76413	1
33	SCREW - hex, 12-24 x 11/16	80751	3
34	PLATE - back	A-63633	1
35	Includes: SEAL	58688-A	1
36	BEARING - roller	63195	1
37	KEY	75078	1
38	CORE - coil	63630	1
39	SCREW - hex, 12-24 x 9/16	80899	1
40	WASHER - flat #8	84025-1	4
41	SCREW - rd., 8-32 x 3/4	80406	4
42	CLAMP - condenser	63627	1
43	CONDENSER - ignition	63626	1
44	SCREW	55471	3
45	COIL - ignition	63625	1
46	CLIP - coil retaining	63726	1
47	SCREW - coil clip	58872	1
48	LEAD - ground	A-59031	1
49	SWITCH - w/nut	A-57650-3	1
50	PLATE - "ON-OFF"	72085-A	1
51	TERMINAL - spark plug	A-33053	1
52	LEAD - high tension	63632	1
53	SCREW - socket cap, 8-32 x 9/16	80865	2
54	PISTON & PIN - 2" bore	A-63380-T	1
55	Includes: RING - retaining	55095	1
	RING - retaining	120705	1
56	RING - piston (2 1/2" bore)	55038	2
57	ROD - connecting	A-63309	1
58	Includes: BEARING - needle	59351	1

No.	Description	Part No.	Qty
59	BEARING - needle (28 rollers)	A-64621	1
60	CRANKSHAFT	*59625-1	1
	CRANKSHAFT	/59625-2	1
61	BEARING - ball	58190-S	1
62	SCREW - bearing retaining	59704	2
63	WASHER - lock	59705	2
64	RING - retaining	58319-A	1
65	GASKET - sealing	63319	1
66	CAP - oil (vented)	A-63717	1
67	Includes: GASKET	56607	1
68	CAP - fuel	A64140-A	1
69	Includes: GASKET	58957	1
70	DECAL	64144	1
71	FILTER ASSEMBLY	A-59251	1
72	Includes: FILTER	59253	1
73	LINE - flexible	55805	1
74	CRANKCASE & TANKS - manual	120670	1
	CRANKCASE & TANKS - automatic	120671	1
75	Includes: GASKET	/58338	1
76	CAP	/58339	1
77	SEAL	58688-A	1
78	PLUG - pipe	/28097	1
79	STUD	55871	4
80	WASHER	*58138	1
81	CAP	*63115	1
82	STUD - guide bar	59764-A	2
83	INSERT - threaded	59896	2
84	SCREW - guide bar adjusting	63367	1
85	FITTING - elbow	63297-A	1
86	LINE - fuel	63335-A	1
87	GASKET - oil pump (shield)	64156	1
88	SCREW - cam	/59737	1
89	GASKET	/59736	1
90	HOUSING - automatic oiler	/A-63461-B	1
91	SEAL - felt	/59926	1
92	GEAR - worm	/59675	1
93	SCREW - nl. 8-32 x 3/4	/80248	3
94	PLUNGER - gear	/63760	1
95	BEARING - flanged	/59719	1
96	SCREW - span, 4-40 x 1/4	/80919	2
97	PIN - guide bar adjusting	58783	1
98	NUT - lock, 1/4-20	81108	1
99	FILTER - oil	58828	1
100	LINE - oil pick-up	*63605	1
101	CONNECTOR - oil filter	*59937	1
102	SLEEVE - flexible oil	/59000	1
103	TUBE - oil line	/63452-A	1
104	"O" RING	/58406	1
105	GASKET - oil line tube	/63751	1
106	GASKET - cylinder	63778	1
107	WASHER - lock, 1/4	83009	4
108	NUT - hex, 1/4 x 28	81065-2	4
109	CYLINDER - 2" bore	*63012-2	1
110	SPARK PLUG	63547-S	1
111	Includes: GASKET	25038	1
112	SCREW - hex, 12-24 x 3/8	80837	1
113	BODY - muffler	A-63535-1A	1
114	SCREW - hex, 12-24 x 5/8	80978	2
115	BAFFLE - muffler	63521-A	1
116	CAP - muffler	63520-1	1
117	SCREW - shoulder	63855-A	3

ACCESSORY

Spark Arrestor (not shown) A-63540-A 1

\* XL-701 units only  
 / XL-701AM units only

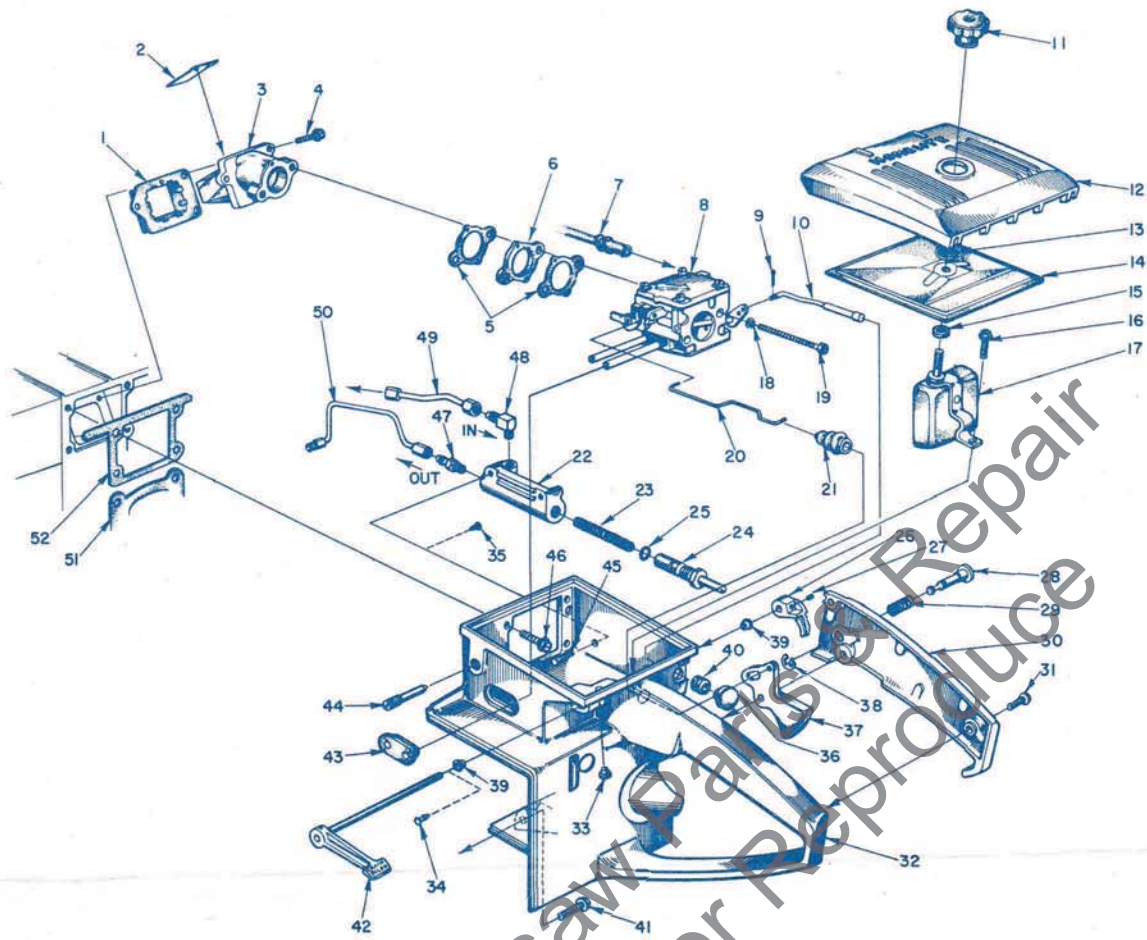
SPECIAL TOOLS available on order

Part No.	Description
A-23937-A	COMBINATION WRENCH
22828	PLIERS - piston snap ring
23528	WRENCH - socket screw (conn. rod)
23955	PLUG - bearing installation (conn. rod)
*A-23137	JACKSCREW
/A-23965	JACKSCREW
*23136	BODY - jackscrew
/23136-1	BODY - jackscrew
*22820-3	COLLAR - bearing
/22820-4	COLLAR - bearing
23846-1	ANVIL - crankshaft installation
*23759	SLEEVE - seal protecting (crankcase)
/23971	SLEEVE - seal protecting (crankcase)
23972	SLEEVE - seal installation (crankcase)
23957	PLUG - seal installation (crankcase)
23987	SHIM - point gap

Part No.	Description
A-23934	WRENCH
A-23696	REMOVER - threaded spider
A-23841	WRENCH - insert (guide bar stud)
A-23960	PULLER - rotor
*23819	PLUG - needle bearing (sprocket)
/23420	PLUG - bearing installation (sprocket)
23956	PLUG - bearing and seal installation (back plate)
A-23962	REMOVER - bearing (back plate)
23846-2	ANVIL - bearing disassembling (back plate)
A-23951	PLUG - piston pin removal
24006-1	PLATE - crankshaft aligning
	PAINT
23318	SPRAY CAN - blue
22771	SPRAY CAN - red
23560	SPRAY CAN - white

ALWAYS FURNISH MODEL AND SERIAL NUMBER WHEN ORDERING PARTS.





**FIGURE 3**

No.	Description	Part No.	Qty.	No.	Description	Part No.	Qty.
1	RETAINER - reed valve	63370	1	27	SCREW - Fil. Ho. 8-32 x 1/4	80018	1
2	VALVE - reed	88166	4	28	PIN - throttle lock	58924	1
3	SEAT - reed valve	A-63907	1	29	SPRING - lock	58405	1
4	SCREW - pan, 8-32 x 1/2	63709	3	30	COVER - throttle handle	A-63325-1	1
5	GASKET - carburetor	63254	1		Includes: BUSHING - pin	59064	1
6	SPACER - carburetor	63256	1	31	SCREW - pan, 8-32 x 1/2	80560	2
7	LINE - fuel	63335-A	1	32	HANDLE - throttle	A-63683	1
8	CARBURETOR	A-63448	1	33	Includes: BUMPER - rubber	56298	1
9	PIN - cotter	86324	1	34	PLUG	63848	2
10	ROD - choke	A-63837	1	35	PLUG	63847	2
11	NUT - cover mounting	A-63582-A	1	36	BUTTON	57289-1	1
12	COVER - air filter	63631-1	1	37	THROTTLE - trigger	58859	1
13	RING - retainer	111352	1	38	RING - retaining	58409	1
14	FILTER ELEMENT - air	63341	1	39	BUSHING - throttle handle	63400	2
15	GASKET - mounting nut	58392-1	1	40	GROMMET	58362	1
16	SCREW - hex, 12-24 x 1/2	80821	1	41	SCREW - hex, 12-24 x 7/8	80891	1
17	DEFLECTOR - air, w/bracket	A-63593	1	42	LEVER - oiler w/shaft	A-63327	1
18	WASHER - lock, #10	83046	2	43	GROMMET	64664	1
19	SCREW - hex, 10-32 x 2	80965	2	44	SCREW - idle adjustment	63369	1
20	ROD - throttle	63266	1	45	SCREW - sl. hex, 8-32 x 1/2	80983	2
21	BOOT - throttle rod	58348	1	46	SCREW - hex, 12-24 x 5/8	80676	4
22	BODY - oil pump	63343-2	1	47	VALVE - check	A-59456-A	1
23	SPRING - plunger	59293	1	48	VALVE - check	A-63432	1
24	PLUNGER - oil pump	A-57834-14	1	49	LINE - oil	A-63298	1
	Includes: "O" RING - shaft	59074	1	50	LINE - oil	A-63299	1
25	"O" RING - plunger	74388	1	51	GASKET - cylinder	63778	1
26	LEVER - oiler	63280-2A	1	52	GASKET - throttle handle	63779	1

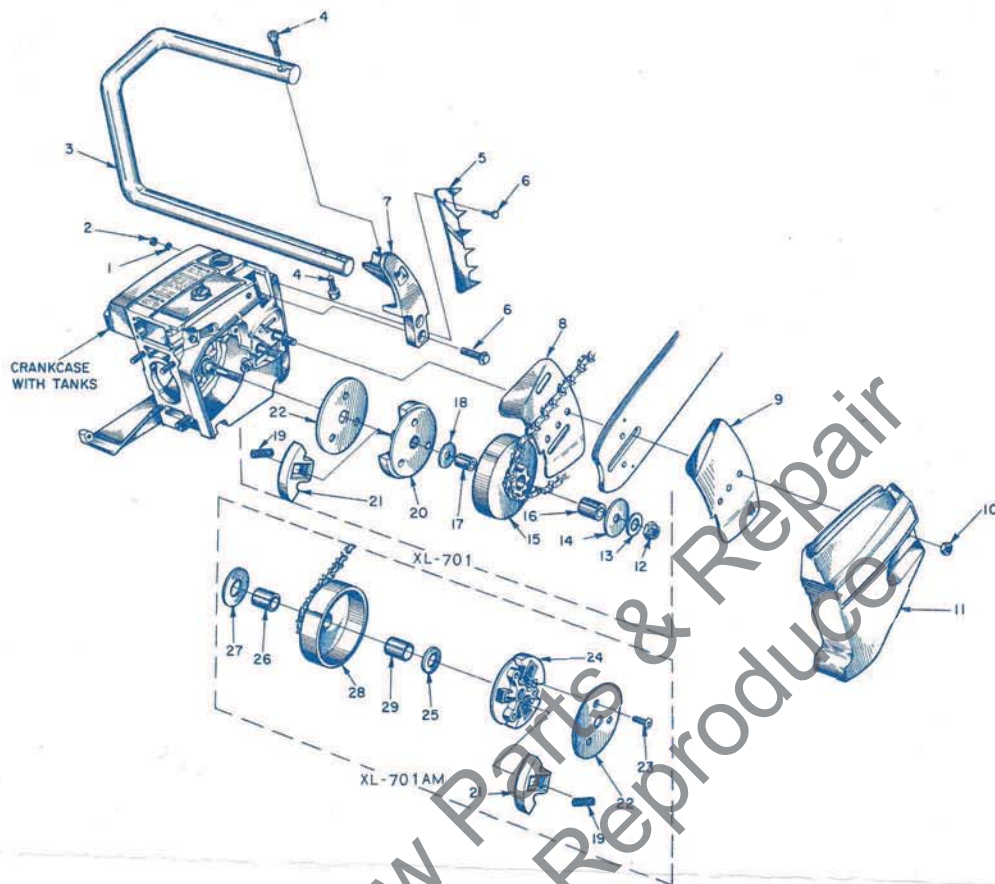


FIGURE 4

No.	Description	Part No.	Qty.	No.	Description	Part No.	Qty.
1	WASHER - lock, 5/16	83056	2	16	Includes: BEARING - needle	*72311	1
2	NUT - 12-24	81068	2	17	RACE - inner	*55584	1
3	HANDLE BAR - flush cut	120202	1	18	WASHER - thrust (inner)	*58833	1
	HANDLE BAR - wrap-around	A-63659-A	1	19	SPRING	63977	3
4	SCREW - socket, 1/4 - 20 x 1	80428	3	20	PLATE - clutch	*63053-1	1
5	SUMMER - spliced (optional)	63549	1	21	SHOE - clutch	63957	3
6	SCREW - hex, 12-24 x 3/4	80867	as req'd.	22	COVER	63051-1	1
7	BRACKET - handle bar (flush cut)	63011-3	1	23	SCREW - button 1/4-20 x 1/2	630985	3
	BRACKET - handle bar (wrap-around)	63011-5	1	24	PLATE - clutch	63053-2	1
8	PLATE - guide bar (inner)	58781	1	25	WASHER - thrust (outer)	63462	1
9	PLATE - guide bar (outer)	58782	1	26	RACE - inner	64129	1
10	NUT - 5/16-18	81196	2	27	WASHER - thrust (inner)	63463	1
11	COVER - drivecase	63009-2	1	28	SPROCKET & DRUM		
12	NUT - lock, 3/8-24	*81192	1		standard - 7 tooth, 3/8" pitch	A-64368	1
13	WASHER - flat, 3/8	*84010-1	1	29	Includes: BEARING - needle	64124	1
14	WASHER - thrust (outer)	*58926	1		Clutch Assy.	A-63983	1
15	SPROCKET & DRUM				Clutch Assy.	A-63984	1
	standard - 7 tooth, 3/8" pitch	*A-59552					

\* XL-701 units only

∓ XL-701AM units only

Wrap around Handle Bar and special Bracket also requires #63660 Brace (not shown) mounted on drivecase cover. Attach Brace to Handle Bar with one #80867 screw.

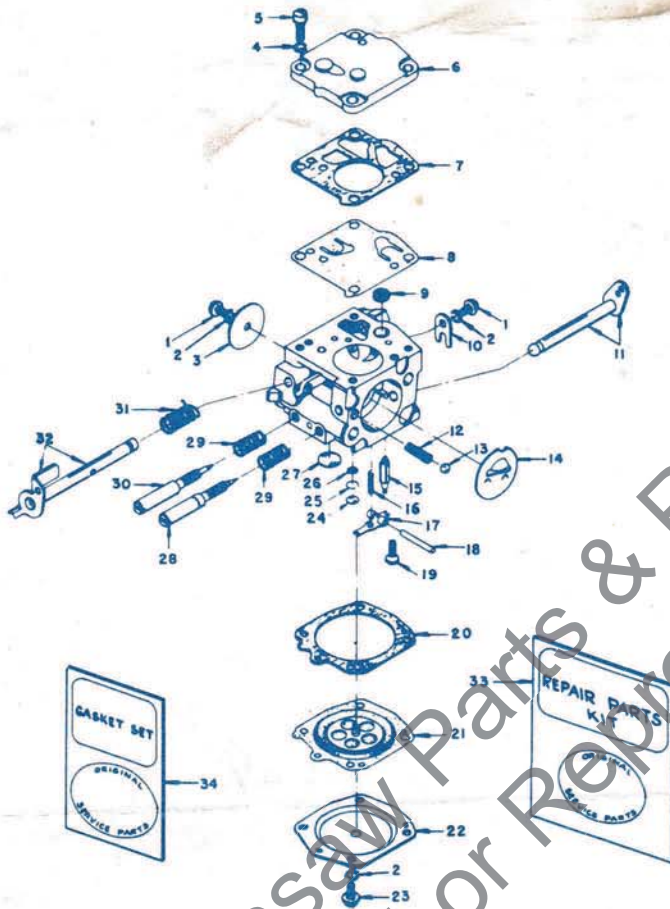


# CARBURETOR PARTS

Homelite Chain Saw

Assembly Number

A-63448



TILLOTSON MODEL HS-26A

No.	Part No.	Description	Qty.	No.	Part No.	Description	Qty.
1	* 80264	SCREW - rd., 4-40 x 3/16	2	18	* 58977	PIN - control lever	1
2	83008-1	WASHER - lock, #4	6	19	* 58992	SCREW - 4-40 x 5/16	1
3	25050	SHUTTER - throttle	1	20	58978	GASKET - diaphragm	1
4	83024	WASHER - lock, #6	1	21	* 58988	DIAPHRAGM - main	1
5	80275	SCREW - fil., 6-32 x 3/8	4	22	58979	COVER - diaphragm	1
6	58975	COVER - pump	1	23	80591	SCREW - rd., 4-40 x 1/4	4
7	58981	GASKET - fuel pump	1	24	* 58994	PLUG - expansion	1
8	* 58980-R	DIAPHRAGM - fuel pump	1	25	57819	RING - retaining	1
9	* 58974	SCREEN	1	26	59500	SCREEN - channel	1
10	58982	CLIP - throttle shaft	1	27	* 58991	PLUG - expansion	1
11	58990	SHAFT & LEVER - choke	1	28	* 63676	NEEDLE - main adjusting	1
12	73264	SPRING - choke friction	1	29	* 73075	SPRING - needle	2
13	25527	BALL - choke friction	1	30	* 63677	NEEDLE - idle adjusting	1
14	58984	SHUTTER - choke	1	31	* 59460	SPRING - throttle return	1
15	* 59717	NEEDLE - inlet	1	32	A-63345	SHAFT & LEVER - throttle	1
16	* 55759	SPRING - inlet	1	33	63679	REPAIR KIT	1
17	* 59716	LEVER - inlet	1	34	* 58971	GASKET SET	1

\* Included in Repair Kit.

PART NO. 120306



# TERRY INDUSTRIES

A DIVISION OF **textron** CANADA LIMITED

180 Labrosse Ave., Pointe Claire, Que.