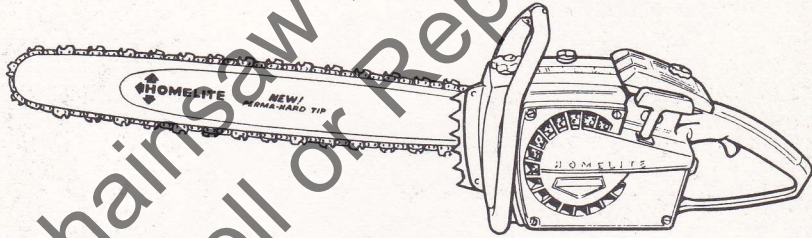


# PARTS LIST

**XL-700**

**XL-800**

# HOMELITE®



Leon's Chainsaw Parts & Repair  
Do Not Sell or Reproduce

# XL

## CHAIN SAWS

Part No. 23974  
Printed in U.S.A.

Rev. 3  
869

**XL-700**

CHAIN SAWS

**XL-800**

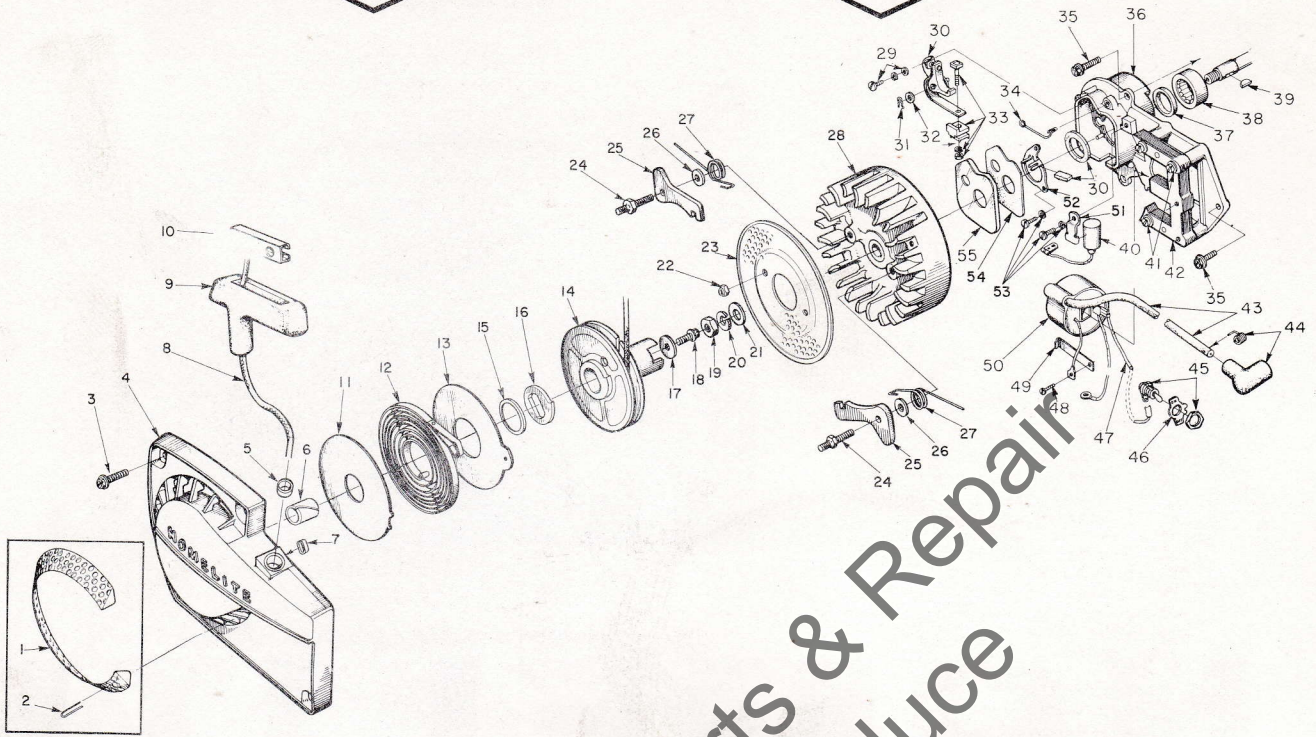


FIGURE 1

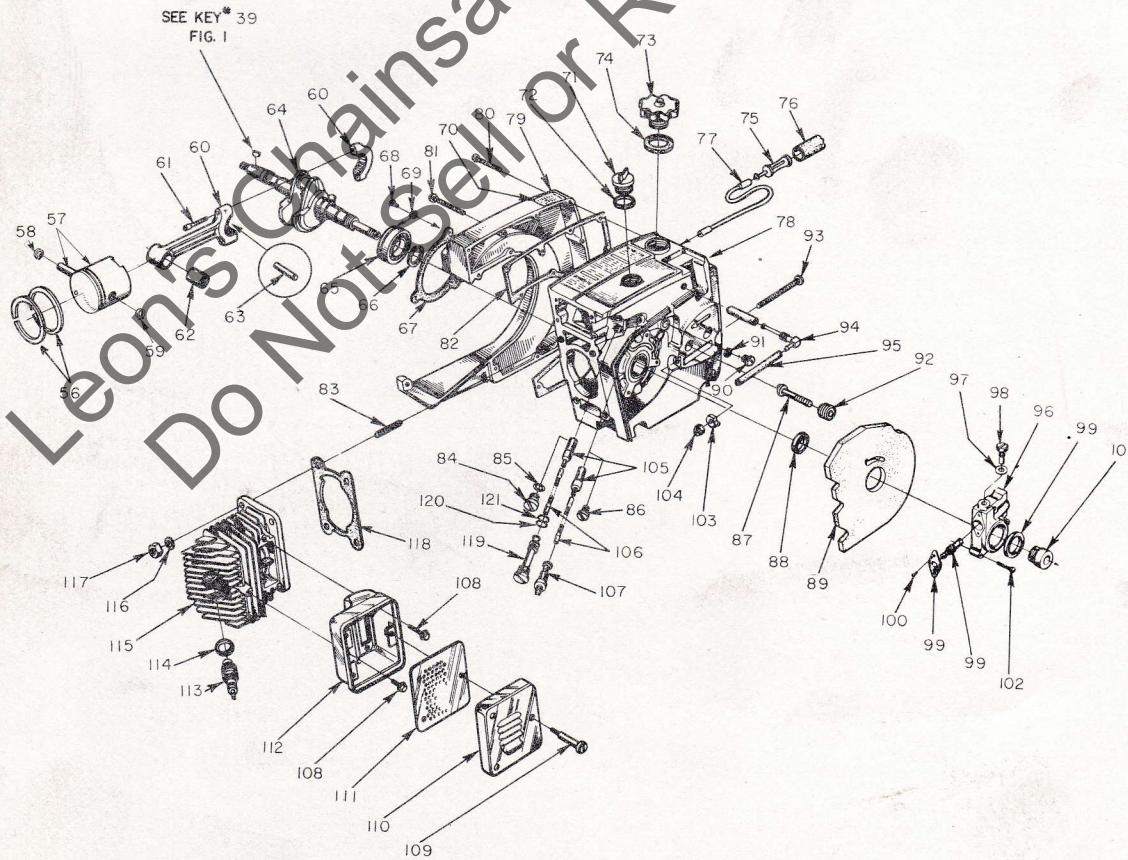


FIGURE 2

ALWAYS FURNISH MODEL AND SERIAL NUMBER WHEN ORDERING PARTS.



# CHAIN SAWS



No.	Description	Part No.	Qty.	No.	Description	Part No.	Qty.
1	SCREEN-(optional)	A-64421	1	63	BEARING-needle (28 rollers)	A-64621	1
2	Includes: FASTENER-screen (optional)	64419-1	6	64	CRANKSHAFT	59625-1	1
3	SCREW-hex, 12-24 x 5/8	80676	4		CRANKSHAFT	59625-2	1
4	HOUSING-fan	A-64504	1	65	BEARING-ball	58190-S	1
5	Includes: BUSHING-rope	67177	1	66	RING-retaining	58319-A	1
6	BUSHING-starter post	64443	1	67	GASKET-sealing	63319	1
7	BUSHING-rewind spring	65830	1	68	SCREW-bearing retaining	59704	2
8	ROPE-starter	58806	1	69	WASHER-lock	59705	2
9	GRIP-rope	58915	1	70	DECAL	64144	1
10	INSERT	58847	1	71	CAP-oil (vented)	A-63717-A	1
11	SHIELD-spring (inner)	63566	1	72	Includes: GASKET	56607	1
12	SPRING-rewind	63268-A	1		VALVE-check (not shown)	63718	1
13	SHIELD-spring (outer)	63565-A	1	73	CAP-fuel	A-64140-1	1
14	PULLEY & CUP ASSEMBLY	A-64446	1	74	Includes: GASKET	65358	1
15	Includes: BUSHING-spring lock	64400	1	75	FILTER ASSEMBLY	A-59251	1
16	LOCK-spring	64049-A	1	76	Includes: FILTER-felt	59253-1	1
17	WASHER-retaining	58763	1	77	LINE-flexible	55805	1
18	SCREW-hex, 10-32 x 1/2	80648	1	78	CRANKCASE & TANKS	A-65338-A	1
19	NUT-hex, 3/8-24	81124	1	*79	Includes: COVER-fuel tank	64825-3	1
20	WASHER-lock, 3/8	83102	1	80	SCREW-fil., 8-32 x 5/8	82146	6
21	WASHER-flat, 3/8	84010-1	1	81	SCREW-fil., 8-32 x 1 3/4	82147	9
22	NUT-lock, 10-32	81109-2	2	82	GASKET-fuel tank	65391	1
23	SCREEN-air	64137-B	1	83	STUD	55871	4
24	STUD-pawl	58757-B	2	84	CAP-oil pump	63115	1
25	PAWL-starter	58756	2	85	GASKET-crankcase	58138	1
26	WASHER	58851	2	86	PLUG-pipe	28097	1
27	SPRING-pawl	58758	2	87	STUD-guide bar	59764-A	2
28	ROTOR	63406	1	88	SEAL	58688-A	1
29	SCREW GROUP-points	76421	1	89	SHIELD-sawdust	A-64715	1
30	POINT SET-w/felts	A-63631	1	90	CAP	58339	1
31	Includes: CLIP-post	28008	1	91	GASKET	58338	1
32	WASHER-point	28028	1	92	INSERT-threaded	59896-A	2
33	TERMINAL BLOCK GROUP	A-58934	1	93	SCREW-guide bar adjusting	63367	1
34	SPRING-cover (clip)	76413	1	94	FITTING-elbow	63297-A	1
35	SCREW-hex, 12-24 x 11/16	80751	4	95	LINE-fuel	63355-A	1
36	PLATE-back	A-63633	1	96	PUMP-automatic oiler	A-64384	1
37	Includes: SEAL	58688-A	1	97	Includes: GASKET	59736	1
38	BEARING-roller	63195	1	98	SCREW-pan	64102-A	1
39	KEY-woodruff	75078	1	99	SEAL-felt	59926	1
40	CONDENSER-ignition	63626	1	100	SCREW-pan, 4-40 x 1/4	80919	2
41	SCREW-coil core	64021	4	101	GEAR-worm	59675	1
42	CORE-coil	63630	1	102	SCREW-fil., 8-32 x 3/4	80248	3
43	LEAD-high tension	63632	1	103	PIN-guide bar adjusting	58783-1	1
44	TERMINAL-spark plug	A-33055	1	104	NUT-lock, 1/4-20	81108	1
45	SWITCH-w/nut	A-57650-B	1	105	FILTER-oil	A-64293	1
46	PLATE-"On-Off"	72085-A	1	106	LINE-oil pick-up	63605	1
47	LEAD-ground	A-59031	1	107	CONNECTOR-oil filter	59937	1
48	SCREW-ground	58872	1	108	SCREW-hex, 12-24 x 5/8	80978	3
49	CLIP-coil retaining	63726	1	109	SCREW-shoulder	63855-A	3
50	COIL-ignition	63625	1	110	CAP-muffler	63520-3	1
51	CLAMP-condenser	63627	1	111	BAFFLE-muffler	63521-A	1
52	RETAINER-felt	63628	1	112	BODY-muffler	A-63535-1A	1
53	SCREW-contact plate	55411	3	113	SPARK PLUG	63547-S	1
54	GASKET-cover	63316	1	114	Includes: GASKET	25038	1
55	COVER-breaker box	63317	1	115	CYLINDER-2" bore	63012-2	1
56	RING-piston (2" bore)	55503	2		CYLINDER-2 1/16" bore	63012-1	1
	RING-piston (2 1/16" bore)	55537	2	116	WASHER-lock, 1/4	83009	4
57	PISTON & PIN-2" bore	A-63780-B	1	117	NUT-hex, 1/4-28	81065-2	4
	PISTON & PIN-2 1/16" bore	A-63781-B	1	118	GASKET-oil line	63751	1
58	Includes: RING-retaining	55095	1	119	TUBE-oil line	63452-A	1
59	RING-retaining	64742	1	120	"O" RING	58406	1
60	ROD-connecting	A-63309	1	121	SLEEVE-flexible oil	59000	1
61	Includes: SCREW-soc. cap, 8-32 x 9/16	80805	2				
62	BEARING-needle	59351	1				

### TOOLS

A-23987-B	COMBINATION WRENCH
22828	PLIERS-piston snap ring
23528	WRENCH-socket screw (conn. rod)
23955	PLUG-bearing installation (conn. rod)
5A-23137	JACKSCREW
5A-23965	JACKSCREW
23136-2	SLEEVE-bearing and shaft installation
23136-1	SLEEVE-bearing and shaft installation
22820-3	COLLAR-bearing installation
22820-4	COLLAR-bearing installation
23846-1	ANVIL-crankshaft installation
23759	SLEEVE-seal protecting (crankcase)
23971	SLEEVE-seal protecting (crankcase)
23972	SLEEVE-seal installation (crankcase)
23957	PLUG-seal installation (crankcase)
23987	SHIM-magneto air gap
A-23984	WRENCH-spanner
A-23841-A	WRENCH-insert (guide bar stud)
A-23960	PULLER-rotor
23819	PLUG-needle bearing (sprocket)
23420	PLUG-bearing installation (sprocket)
23956	PLUG-bearing and seal installation (back plate)
A-23962	REMOVER-bearing (back plate)
23846-2	ANVIL-bearing disassembling (back plate)
A-23951	PLUG-piston pin removal
24006-1	PLATE-crankshaft aligning
24230	DRIVER-hand "pozidriv"

\* Denotes new part  
 § XL-700 only / XL-800 only

① In units below serial #2353392 service replacement Crankcase A-65338-A must be used with A-63485-2A Handle Bar. A-65338-A supersedes A-63682, -A, -B, -C and A-65338.

② Two separate gaskets replace one piece gasket used in some units.

### PAINT

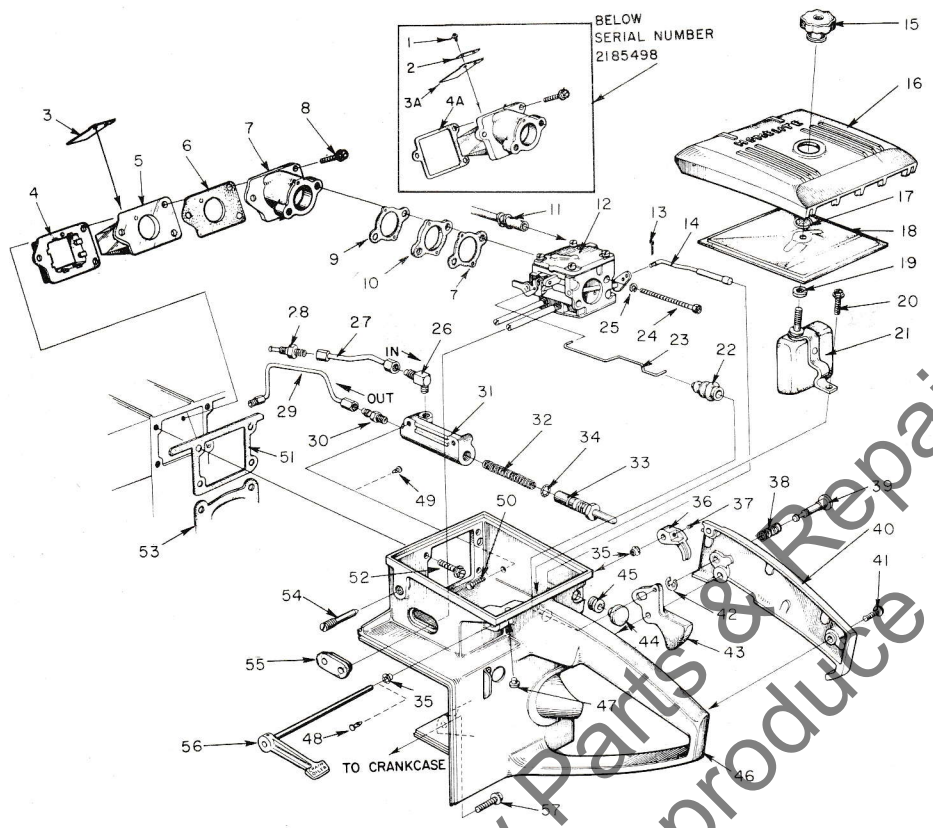
23318	SPRAY CAN-blue
22771	SPRAY CAN-red
23560	SPRAY CAN-white

### ACCESSORIES

SPARK ARRESTOR	A-63540-A
MUFFLER SHIELD KIT	A-65363
KIT-starter rope	A-24266
KIT-filter	A-24270
KIT-ignition	A-24274
KIT-guide bar plate	A-24275
KIT-fastening parts	A-24279

ALWAYS FURNISH MODEL AND SERIAL NUMBER WHEN ORDERING PARTS.

**XL-700** CHAIN SAWS **XL-800**

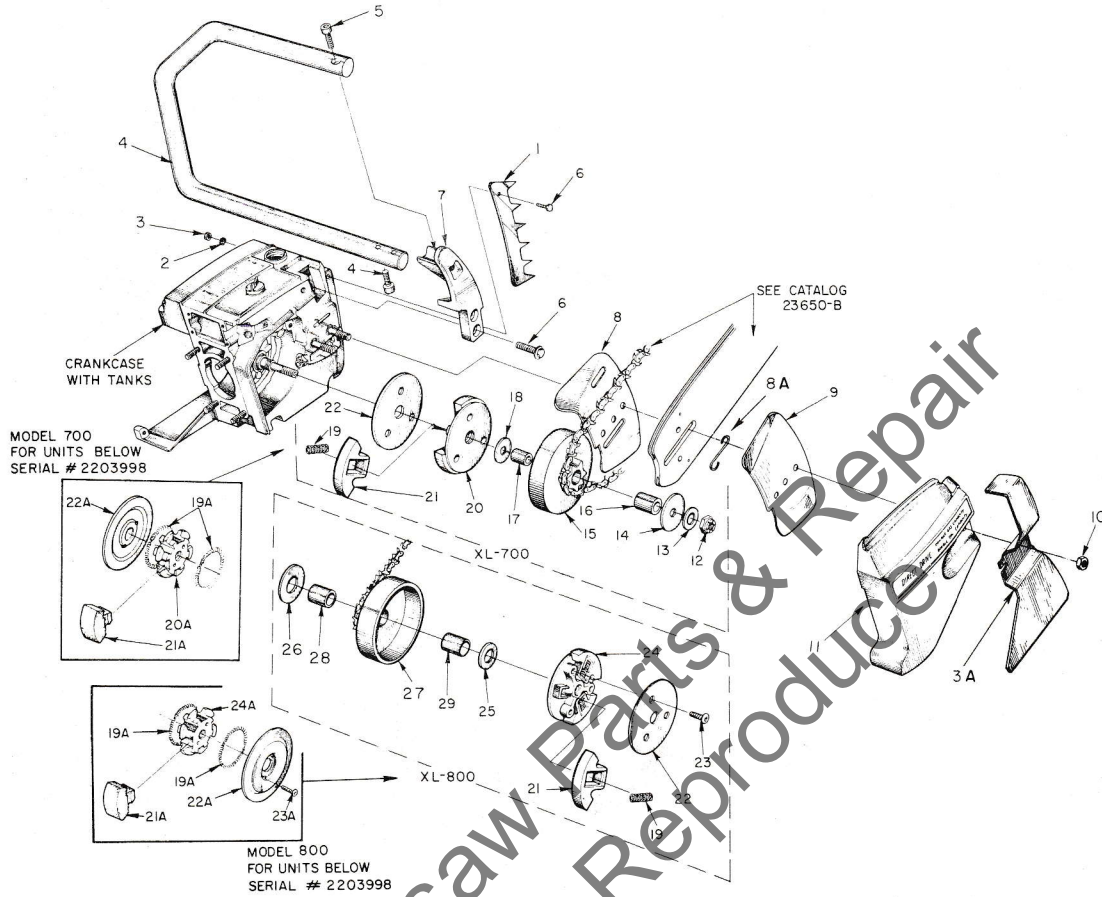


**FIGURE 3**

No.	Description	Part No.	Qty.	No.	Description	Part No.	Qty.
1	SCREW-pan, 4-40 x 1/8	80916	8	29	LINE-oil	\$A-63299	1
2	SPRING-valve	59679	4	30	VALVE-check	\$A-59456-A	1
3	VALVE-reed	63166	4	31	BODY-oil pump	\$63343-2	1
3A	VALVE-reed	63667	4	32	SPRING-plunger	\$59293	1
4	RETAINER-reed valve	63370	1	33	PLUNGER-oil pump	\$A-57834-14	1
4A	GASKET-seat	63255	1		Includes: "O" RING-shaft	\$59074	1
	KIT-reed valve seat	A-65932	1	34	"O" RING-plunger	\$74388	1
5	Includes: SEAT-reed valve ①	63371-A	1	35	BUSHING-throttle handle	\$63400	2
6	GASKET-seat	65483	1	36	LEVER-oiler ②	\$63280-2A	1
7	SPACER-reed valve	63019-1A	1	37	SCREW-soc. set, 8-32 x 1/4 ②	\$80989	1
8	SCREW-shoulder ①	65489	3	38	SPRING-lock	58405	1
9	GASKET-carburetor	63254	2	39	PIN-throttle lock	58924	1
10	SPACER-carburetor	63256	1	*40	COVER-throttle handle	A-63325-1A	1
11	LINE-fuel	63335-A	1		Includes: BUSHING-pin	59064	1
12	CARBURETOR	A-63448	1	41	SCREW-pan, 8-32 x 1/2	80560	2
13	PIN-cotter	86324	1	42	RING-retaining	58409	1
14	ROD-choke	A-63337	1	43	THROTTLE-trigger	58859	1
15	NUT-cover mounting	A-63582-A	1	44	BUTTON-choke	57289-1	1
16	COVER-air filter	63634-1	1	45	GROMMET	58362	1
17	RING-retainer	58319-A	1	*46	HANDLE-throttle ③	A-63683-A	1
18	FILTER ELEMENT-air	63341	1	47	Includes: BUMPER-rubber	56298	1
19	GASKET-mounting nut	58392-1	1	48	PLUG	63848	2
20	SCREW-hex, 12-24 x 1/2	80821	1	49	PLUG	63847	2
21	DEFLECTOR-air w/bracket	A-63493	1	50	SCREW-hex, 8-32 x 1/2	\$80983	2
22	BOOT-throttle rod	58348	1	51	GASKET-throttle handle	63779-B	1
23	ROD-throttle	63266	1	52	SCREW-hex, 12-24 x 5/8	80676	4
24	SCREW-hex, 10-32 x 2	80965	2	53	GASKET-cylinder	63778	1
25	WASHER-lock, #10	83046	2	54	SCREW-idle adjustment	63369	1
26	VALVE-check	\$A-63432	1	55	GROMMET-"Hi-Lo"	58858	1
27	LINE-oil	\$A-63298	1	56	LEVER-oiler w/shaft	\$A-63327	1
28	CONNECTOR-oil filter	\$59937	1	57	SCREW-hex, 12-24 x 7/8	80891	1

\* Denotes new part  
 § XL-700 only  
 / XL-800 only

- ① For units below serial #2779073 use Reed Valve Seat Kit A-65932.
- ② 63280-2A Lever supersedes 63280-2 and must use 80989 Set Screw. Units below serial #2216705 use 80267 Set Screw.
- ③ Service replacement Throttle Handle supplied with instructions for assembly in XL-700, or XL-800 units.



**FIGURE 4**

No.	Description	Part No.	Qty.
1	KIT-spiked bumper (optional)	A-63720	1
2	Includes: WASHER-lock, #12	83056	2
3	NUT-hex, #12	81068	2
	SCREW-hex, 12-24 x 3/4 (Index #6)	80867	2
4	HANDLE BAR-flush cut	A-63485-2A	1
	HANDLE BAR-3/4 wrap around (optional) ①	A-63659-A	1
*	KIT-handle bar, wrap around (optional)	A-64945	1
	Includes: HANDLE BAR	A-64385-3	1
4A	GUARD-chain	64867-1	1
	BRACKET-handle bar (Index #7)	63011-8	1
5	SCREW-socket, 1/4-20 x 1	80428	3
6	SCREW-hex, 12-24 x 3/4	80867	2
7	BRACKET-handle bar (flush cut)	63011-3	1
	BRACKET-handle bar (3/4 wrap around) optional ①	63011-8	1
8	PLATE-guide bar (inner)	58781	1
8A	SPRING-guide bar	64448	1
9	PLATE-guide bar (outer)	58782	1
10	NUT-5/16-18	81196	2
11	COVER-drivecase	63009-2	1
12	NUT-lock, 3/8-24	881192	1
13	WASHER-flat, 3/8	894010-1	1
14	WASHER-thrust (outer)	858926	1
15	SPROCKET & DRUM ②		
	standard - 7 tooth, 3/8" pitch	8A-59552	1
	optional - 8 tooth, 3/8" pitch	8A-63346	1
	- 7 tooth, .404 pitch	8A-59555	1
16	Includes: BEARING-needle	872311	1
	KIT-Drum & Hub (rim type) optional	8A-67090	1
	Includes: DRUM & HUB	8A-65990	1
	BEARING-needle	864124	1
	RACE-inner	865746	1
	WASHER-thrust (outer) ④	858833	1

\* Denotes new part  
 § XL-700 only  
 / XL-800 only

No.	Description	Part No.	Qty.
	SPROCKET-rim type (optional)		
	7 tooth, 3/8" pitch	OM68210	1
	7 tooth, .404 pitch	OM10513	1
17	RACE-inner	855584	1
18	WASHER-thrust (inner)	858833	1
19	SPRING-clutch	65842	3
19A	SPRING-clutch ③	55123-C	2
20	PLATE-clutch	863053-1	1
20A	SPIDER-clutch ③	858927-2	1
21	SHOE-clutch	64569	3
21A	SHOE-clutch ③	58928-1	6
22	COVER-clutch	63051-1	1
22A	COVER-clutch ③	58751-1	1
23	SCREW-hex, 1/4-20 x 1/2	/64471	3
23A	SCREW-button, 10-32 x 1/2 ③	/80976	2
24	PLATE-clutch	/63053-2	1
24A	SPIDER-clutch ③	/58927-2	1
25	WASHER-thrust (outer)	/63462	1
26	WASHER-thrust (inner)	/63463	1
27	SPROCKET & DRUM		
	standard - 8 tooth, 3/8" pitch	/A-64370	1
	optional - 8 tooth, .404 pitch	/A-64371	1
	- 7 tooth, .404 pitch	/A-64369	1
	- 7 tooth, 3/8" pitch	/A-64368	1
28	Includes: RACE-inner	64129	1
29	BEARING-needle	64124	1
*	KIT-Drum & Hub (rim type) optional	/A-67091	1
	Includes: DRUM & HUB	/A-65990	1
	BEARING-needle	/64124	1
	RACE-inner	/64129	1
	WASHER-thrust (inner) ⑤	/63462	1

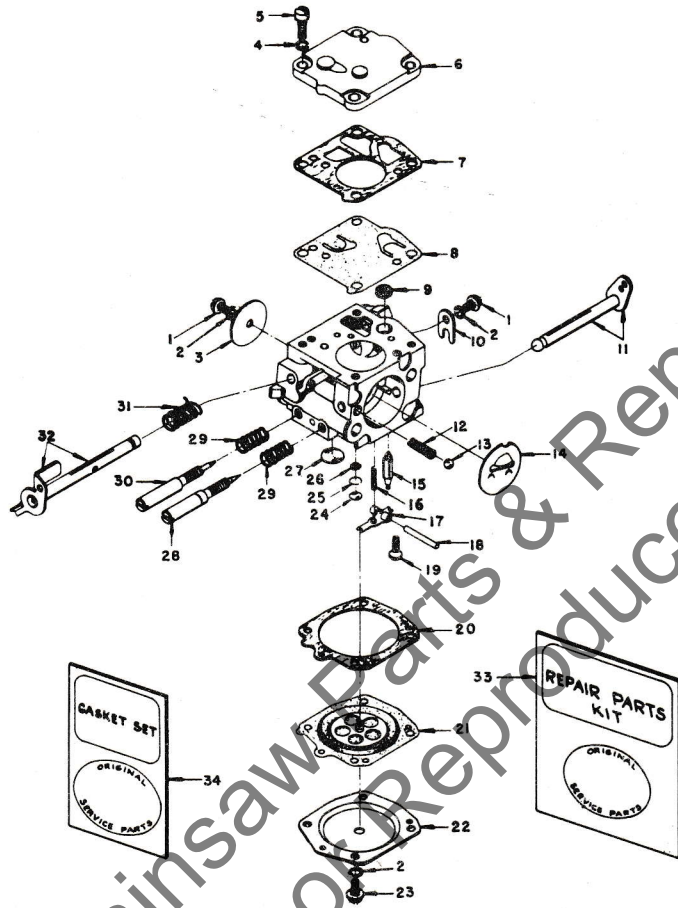
③ On units below serial #2203998 parts are not interchangeable except as a complete assemblies.

④ When using A-67090 Drum & Hub Kit, 58926 Thrust Washer (outer) must be replaced with 58833 Thrust Washer (outer).

⑤ When using A-67091 Drum & Hub Kit, 63463 Thrust Washer (inner) must be replaced with 63462 Thrust Washer (inner).

① Wrap around Handle Bar and special Bracket also requires #63660 Brace (not shown) mounted on Drivecase Cover. Attach Brace to Handle Bar with one #80867 Screw.

② Check type and number of teeth before ordering.



MODEL HS-26A

No.	Part No.	Description	Qty.	No.	Part No.	Description	Qty.
1	* 80264	SCREW - rd., 4-40 x 3/16 . . . . .	2	18	* 58977	PIN - control lever . . . . .	1
2	83008-1	WASHER - lock, #4 . . . . .	6	19	* 58992	SCREW - 4-40 x 5/16 . . . . .	1
3	25050	SHUTTER - throttle . . . . .	1	20	58978	GASKET - diaphragm . . . . .	1
4	83024	WASHER - lock, #6 . . . . .	1	21	* 58988	DIAPHRAGM - main . . . . .	1
5	80275	SCREW - fil., 6-32 x 3/8 . . . . .	4	22	58979	COVER - diaphragm . . . . .	1
6	58975	COVER - pump . . . . .	1	23	80591	SCREW - rd., 4-40 x 1/4 . . . . .	4
7	58981	GASKET - fuel pump . . . . .	1	24	* 58994	PLUG - expansion . . . . .	1
8	* 58980-R	DIAPHRAGM - fuel pump . . . . .	1	25	57819	RING - retaining . . . . .	1
9	* 58974	SCREEN . . . . .	1	26	59500	SCREEN - channel . . . . .	1
10	58982	CLIP - throttle shaft . . . . .	1	27	* 58991	PLUG - expansion . . . . .	1
11	58990	SHAFT & LEVER - choke . . . . .	1	28	* 63676	NEEDLE - main adjusting . . . . .	1
12	73264	SPRING - choke friction . . . . .	1	29	* 73075	SPRING - needle . . . . .	2
13	25527	BALL - choke friction . . . . .	1	30	* 63677	NEEDLE - idle adjusting . . . . .	1
14	58984	SHUTTER - choke . . . . .	1	31	* 59460	SPRING - throttle return . . . . .	1
15	* 59717	NEEDLE - inlet . . . . .	1	32	A-63345	SHAFT & LEVER - throttle . . . . .	1
16	* 55759	SPRING - inlet . . . . .	1	33	63679	REPAIR KIT . . . . .	1
17	* 59716	LEVER - inlet . . . . .	1	34	* 58971	GASKET SET . . . . .	1

\* Included in Repair Kit.



# CHAIN SAWS



Part No.	Description	Qty.	Part No.	Description	Qty.	Part No.	Description	Qty.	Part No.	Description	Qty.
OM10513	Sprocket	1	58757-B	Stud	2	A-63327	Lever	1	64400	Bushing	1
22771	Paint-Red	1	58758	Spring	2	63335-A	Line	1	64419-1	Fastener	6
22820-3	Collar	1	58763	Washer	1	A-63337	Rod	1	A-64421	Screen	1
22820-4	Collar	1	58781	Plate-Inner	1	63341	Filter	1	64443	Bushing	1
22828	Pliers	1	58782	Plate-Outer	1	63343-2	Body	1	A-64446	Pulley	1
23136-1	Sleeve	1	58783-1	Pin	1	A-63346	Sprocket	1	64448	Spring	1
23136-2	Sleeve	1	58806	Rope	1	63367	Screw	1	64471	Screw	3
A-23137	Jackscrew	1	58833	Washer-Inner	2	63369	Screw	1	A-64504	Housing	1
23318	Paint-Blue	1	58847	Insert	1	63370	Retainer	1	64569	Shoe	3
23420	Plug	1	58851	Washer	2	63371-A	Seat	1	A-64621	Bearing	1
23528	Wrench	1	58858	Grommet	1	63400	Bushing	2	A-64715	Shield	1
23560	Paint-White	1	58859	Throttle	1	63406	Rotor	1	64742	Ring	1
23759	Sleeve	1	58872	Screw	1	A-63432	Valve	1	*64825-3	Cover	1
23819	Plug	1	58915	Grip	1	A-63448	Carburetor	1	64867-1	Guard	1
A-23841-A	Wrench	1	58924	Pin	1	63452-A	Tube	1	A-64945	Kit-Hdle. Bar	1
23846-1	Anvil	1	58926	Washer-Outer	1	63462	Washer-Inner	2	A-65338-A	Crankcase	1
23846-2	Anvil	1	58927-2	Spider	1	63463	Washer-Inner	1	65358	Gasket	1
A-23934	Wrench	1	58928-1	Shoe	6	A-63485-2A	Handle Bar	1	A-65363	Kit-Muffler	1
A-23937-B	Wrench	1	A-58934	Block	1	63520-3	Cap	1	65391	Gasket	1
A-23951	Plug	1	59000	Sleeve	1	63521-A	Baffle	1	65483	Gasket	1
23955	Plug	1	A-59031	Lead	1	A-63535-1A	Body	1	65489	Screw	3
23956	Plug	1	59064	Bushing	1	A-63540-A	Arrester	1	65746	Race-Inner	1
23957	Plug	1	59074	"O" Ring	1	63547-S	Spark Plug	1	65830	Bushing	1
A-23960	Puller	1	A-59251	Filter Assy.	1	63565-A	Shield-Outer	1	65842	Spring	3
A-23962	Remover	1	59253-1	Filter	1	63566	Shield-Inner	1	A-65932	Kit-Seat	1
A-23965	Jackscrew	1	59293	Spring	1	A-63582-A	Nut	1	A-65990	Drum & Hub	1
23971	Sleeve	1	59351	Bearing	1	A-63593	Deflector	1	A-67090	Kit-Drum	1
23972	Sleeve	1	A-59456-A	Valve	1	63605	Line	1	*A-67091	Kit-Drum	1
23987	Shim	1	A-59552	Sprocket	1	63625	Coil	1	67177	Bushing	1
24006-1	Plate	1	A-59555	Sprocket	1	63626	Condenser	1	OM68210	Sprocket	1
24230	Driver	1	59625-1	Crankshaft	1	63627	Clamp	1	72085-A	Plate	1
A-24266	Kit-Rope	1	59625-2	Crankshaft	1	63628	Retainer	1	72311	Bearing	1
A-24270	Kit-Filter	1	59675	Gear	1	63630	Core	1	74388	"O" Ring	1
A-24274	Kit-Ignition	1	59679	Spring	4	A-63631	Point Set	1	75078	Key	1
A-24275	Kit-Plate	1	59704	Screw	2	63632	Lead	1	76413	Spring	1
A-24279	Kit-Fastening	1	59705	Washer	2	A-63633	Plate	1	76421	Screw Group	1
25038	Gasket	1	59736	Gasket	1	63634-1	Cover	1	FASTENING PARTS		
28008	Clip	1	A-59764-A	Stud	2	A-63659-A	Handle Bar	1	80248	8-32 x 3/4	3
28028	Washer	1	59896-A	Insert	2	63667	Valve	4	80428	1/4-20 x 1	3
28097	Plug	1	59926	Seal	1	*A-63683-A	Handle	1	80560	8-32 x 1/2	2
A-33055	Terminal	1	59937	Connector	2	A-63717-A	Cap	1	80648	10-32 x 1/2	1
55038	Ring	2	63009-2	Cover	1	63718	Valve	1	80676	12-24 x 5/8	8
55095	Ring	1	63011-3	Bracket	1	A-63720	Kit-Bumper	1	80751	12-24 x 11/16	4
55123-C	Spring	2	63011-8	Bracket	1	63726	Clip	1	80805	8-32 x 9/16	4
55411	Screw	3	63012-1	Cylinder	1	63751	Gasket	1	80821	12-24 x 1/2	1
55537	Ring	2	63012-2	Cylinder	1	63778	Gasket	1	80867	12-24 x 3/4	4
55584	Race-Inner	1	63019-1A	Spacer	1	63779-B	Gasket	1	80891	12-24 x 7/8	1
55805	Line	1	63051-1	Cover	1	A-63780-B	Piston & Pin	1	80918	4-40 x 1/8	8
55871	Stud	4	63053-1	Plate	1	A-63781-B	Piston & Pin	1	80919	4-40 x 1/4	2
56298	Bumper	1	63053-2	Plate	1	63847	Plug	2	80965	10-32 x 2	2
56607	Gasket	1	63115	Cap	1	63848	Plug	2	80976	10-32 x 1/2	2
57289-1	Button	1	63166	Valve	4	63855-A	Screw	3	80978	12-24 x 5/8	3
A-57650-3	Switch	1	63195	Bearing	1	64021	Screw	4	80983	8-32 x 1/2	2
A-57834-14	Plunger	1	63254	Gasket	2	64049-A	Lock	1	80989	8-32 x 1/4	1
58138	Gasket	1	63255	Gasket	1	64102-A	Screw	1	81065-2	Nut-1/4x28	4
58190-S	Bearing	1	63256	Spacer	1	64124	Bearing	1	81068	Nut-#12	2
58319-A	Ring	2	63266	Rod	1	64129	Race-Inner	1	81108	Nut-1/4-20	1
58338	Gasket	1	63268-A	Spring	1	64137-B	Screen	1	81109-2	Nut-10-32	2
58339	Cap	1	63280-2A	Lever	1	A-64140-1	Cap	1	81124	Nut-3/8-24	1
58348	Boot	1	63297-A	Fitting	1	64144	Decal	1	81192	Nut-3/8-24	1
58362	Grommet	1	A-63298	Line	1	A-64293	Filter	1	81196	Nut-5/16-18	2
58392-1	Gasket	1	A-63299	Line	1	A-64368	Sprocket	1	82146	8-32 x 5/8	6
58405	Spring	1	A-63309	Rod	1	A-64369	Sprocket	1	82147	8-32x1 3/4	9
58406	"O" Ring	1	63316	Gasket	1	A-64370	Sprocket	1	83009	Washer-1/4	4
58409	Ring	1	63317	Cover	1	A-64371	Sprocket	1	83046	Washer-#10	2
58688-A	Seal	2	63319	Gasket	1	A-64384	Pump	1	83056	Washer-#12	2
58751-1	Cover	1	*A-63325-1A	Cover	1	A-64385-3	Handle Bar	1	83102	Washer-3/8	1
58756	Pawl	2							84010-1	Washer-3/8	2
									86324	Pin-Cotter	1

\* Denotes new parts

XL

CHAIN SAW

**HOMELITE**

A **Textron** DIVISION • PORT CHESTER, NEW YORK

Leon's Chainsaw Parts & Repair  
Do Not Sell or Reproduce