

HOMELITE

XL 700



XL-700



Cuts 15" Hardwood in 12 Seconds
Cuts 16" Softwood in 11 Seconds
Fells Trees Up To 5 Ft. in Diameter

DIRECT DRIVE *Double Gas Capacity* **CHAIN SAW**
Double Oil Capacity



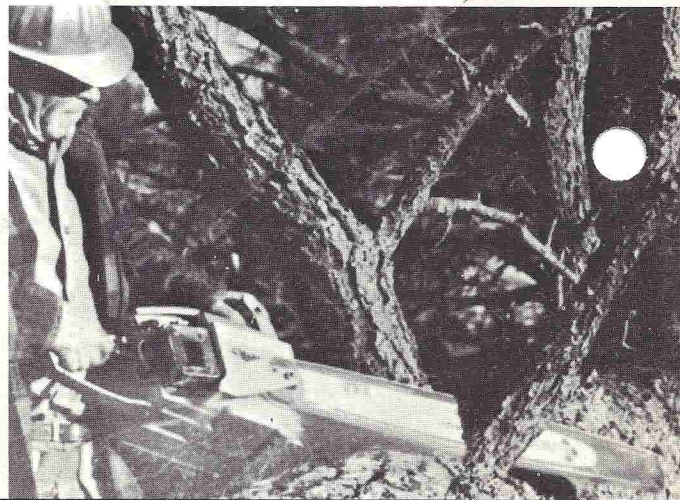
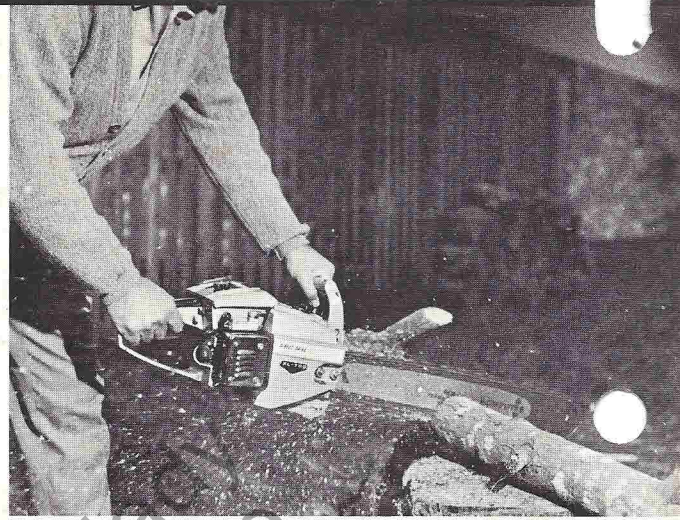
4.7 Cubic Inch
14½ Pound Engine
Manual Oiler



HOMELITE

SPECIFICATIONS

- ENGINE ● Homelite Two Cycle (Loop Scavenged)
- FUEL TANK CAPACITY ● 38 ozs.
- FUEL AND MIXTURE ● Regular Gas with ½ Pint (16:1) Homelite or SAE 30 Oil per Gallon
- FUEL FILTER ● Flexible Fuel Pick-up with Replaceable Filter
- AIR FILTER ● Micro Mesh Fiber with Integral Gasket
- CARBURETOR ● Tillotson All-Position Diaphragm w/ Integral Fuel Pump and Strainer. External Adjustments
- INTAKE VALVE ● Pyramid Reed
- MAGNETO ● High Tension, Moisture and Dust Proof
- BREAKER POINT SETTING AND LOCATION ● .015", Protected in Sealed Box under Rotor
- IGNITION TIMING ● 30° BTDC Static
- SPARK PLUG TYPE AND GAP ● Champion CJ-6, .025" Gap
- THROTTLE CONTROL ● Trigger in Handle w/Throttle Lock
- BORE ● 2"
- STROKE ● 1½"
- DISPLACEMENT ● 4.7 Cubic Inch
- ENGINE SPEED ● 6000 RPM under Load
- CLUTCH ENGAGING SPEED AND TYPE ● 2600 RPM, Heavy Duty Centrifugal
- BEARINGS ● Heavy Duty Anti Friction Roller and Ball Bearings
- MUFFLER ● Quiet Type w/Baffled Spark Arrester
- SPROCKET ● 7 Tooth, ⅜" Pitch
- CHAIN ● ⅜" Pitch #72 Oregon Chipper
- CHAIN SPEED ● 3200 Ft. per Min. under Load
- CHAIN OILER TYPE AND CAPACITY ● Manual Positive 7.7 oz. Reservoir with Filter
- WEIGHT, LESS BAR AND CHAIN ● Exactly 14½ Pounds
- BAR SIZES ● 12", 16", 20", 24", 30" and 36"
- HANDLE BAR TYPE ● Flush Cut
- ATTACHMENTS ● Utility and Clearing Bars, 14" Plunge-Cut Bow



HOMELITE A **textron** DIVISION **PORT CHESTER, N.Y. U.S.A.**