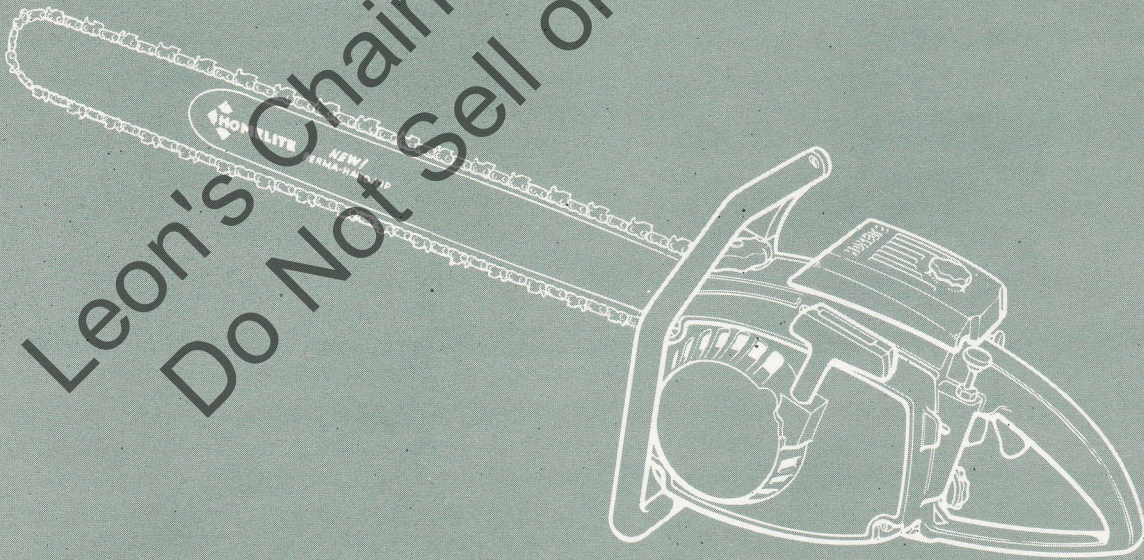


# HOMELITE

## CHAIN SAW



**XL-600**  
AUTOMATIC

**PARTS LIST**

# HOMELITE **XL-800** CHAIN SAW

**AUTOMATIC**

FIGURE 1

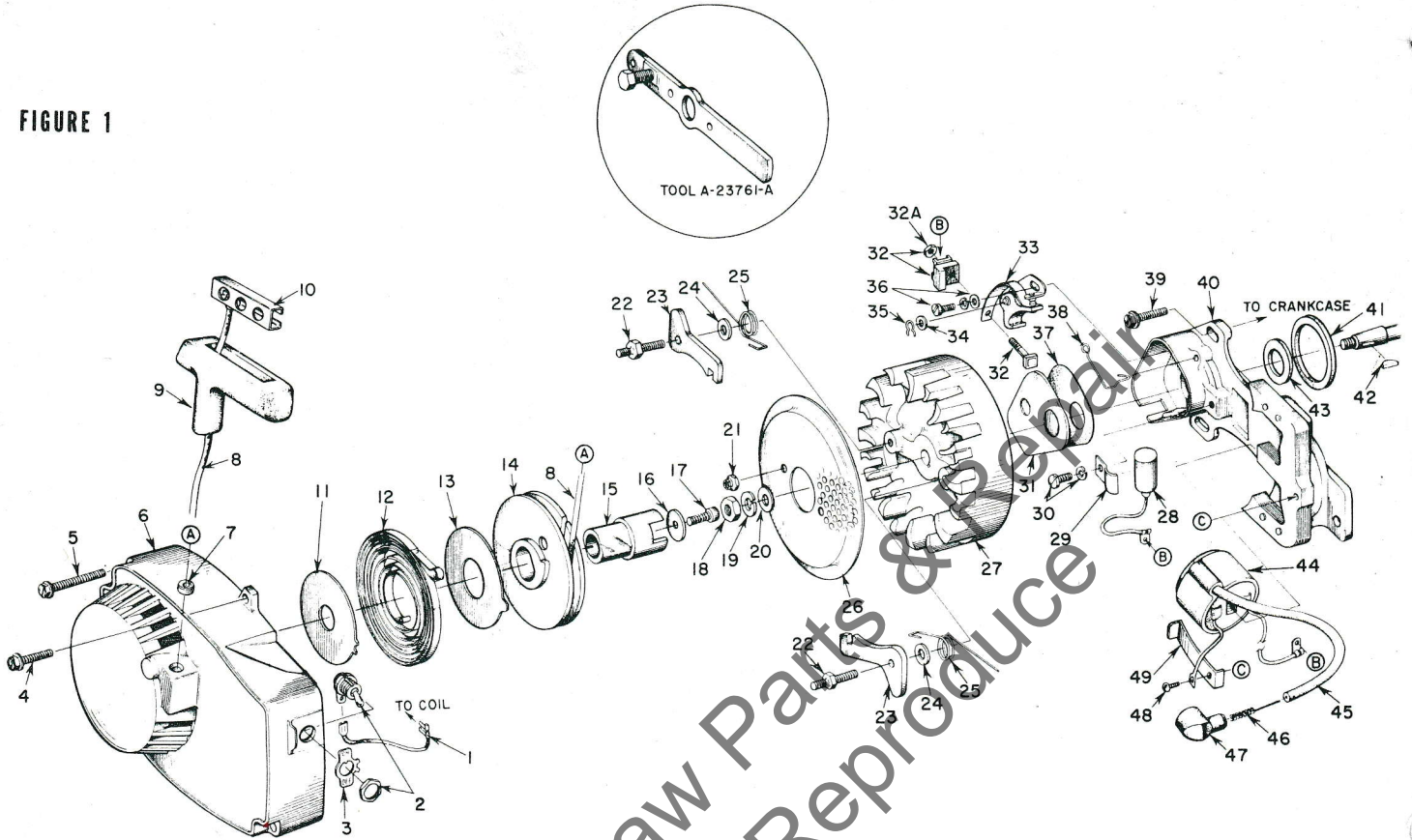
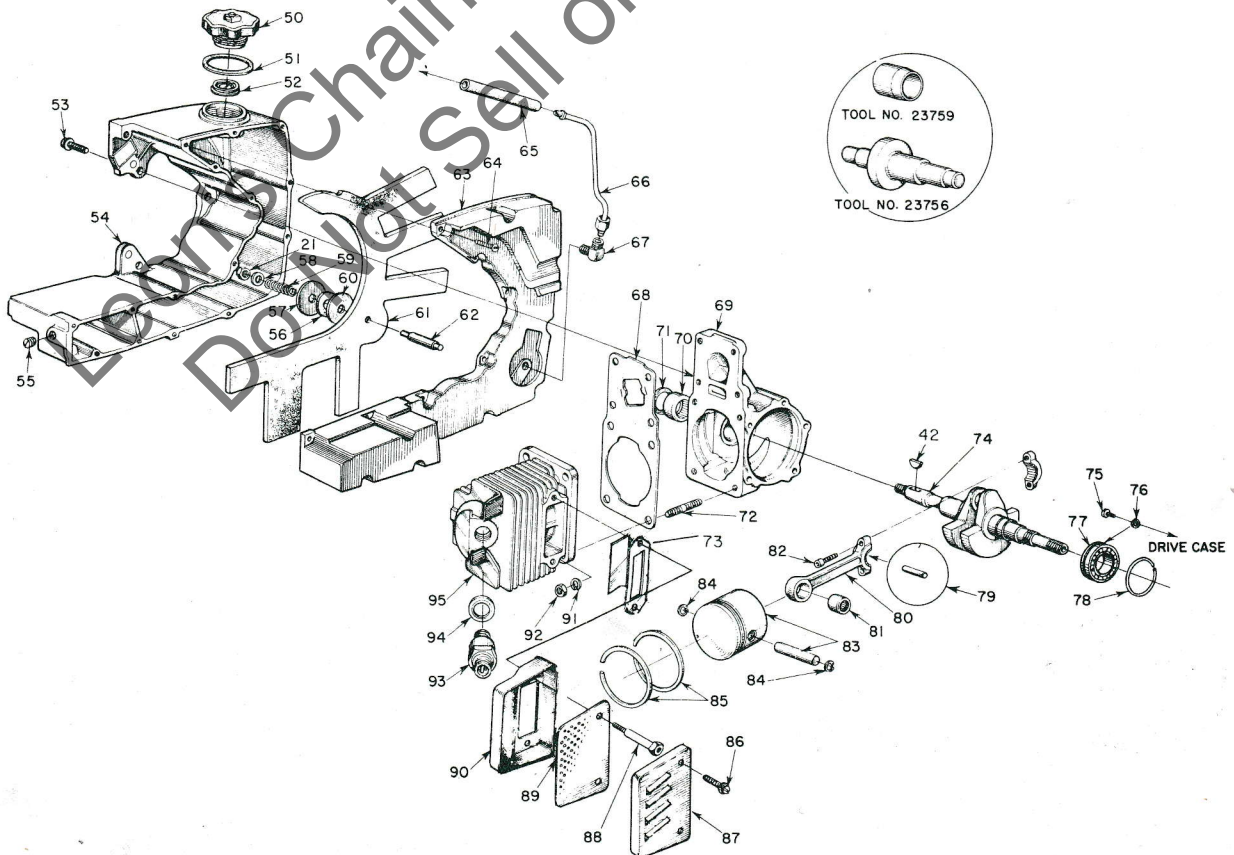


FIGURE 2



# HOMELITE XL-600 AUTOMATIC CHAIN SAW

No.	Description	Part No.	Qty.	No.	Description	Part No.	Qty.
1	LEAD - ground w/term. ....	A-59031	1	45	LEAD - hi-tension.....	58966	1
2	SWITCH - w/nut .....	A-57650-3	1	46	SPRING - contact .....	58919	1
3	PLATE - "ON-OFF" .....	72085-A	1	47	BOOT - spark plug .....	58918	1
4	SCREW - hex, 12-24 x 5/8.....	80676	1	48	SCREW - coil clip .....	58872	1
5	SCREW - hex, 12-24 x 1 11/16 ..	58963	3		....."W"	58977	1
6	FAN HOUSING.....	A-59824	1	49	....."P"	58873	1
7	Includes: BUSHING - rope.....	59313	1		CLIP - coil retaining.....	59863	1
8	ROPE - starter .....	58806	1	50	....."P"	A-59956	1
9	GRIP - rope .....	58915	1	51	CAP - fuel filler .....	58957	1
10	INSERT.....	58847	1	52	Includes: GASKET.....	58865	1
11	SHIELD - spring (inner) .....	59638-A	1	53	VALVE .....	80867	3
12	SPRING - recoil .....	58764	1	54	SCREW - hex, 12-24 x 3/4 .....	58732	1
13	SHIELD - spring (outer) .....	59639-A	1	55	TANK - fuel .....	59571	1
14	PULLEY - starter .....	58759-A	1	56	PLUG - pipe, 1/16 - 27 .....	58865	1
15	CUP - starter .....	58760	1	57	GASKET.....	58866	1
16	WASHER - retaining.....	58763	1	58	WASHER - wick .....	84003-1	1
17	SCREW - socket, 10-32 x 1/2 ..	80492	1	59	WASHER - flat, #10 .....	58867	1
18	NUT - hex, 5/16 - 24 .....	81117	1	60	SPRING - compression.....	58867	1
19	WASHER - lock, 5/16 .....	83002	1	61	WASHER - felt .....	59457	1
20	WASHER - flat, 5/16 .....	84056	1	62	WICK - fuel pick-up .....	58862	1
21	NUT - lock, 10-32 .....	81109	3	63	STUD - wick .....	58519	1
22	STUD - shoulder .....	58757-A	2	64	COVER - tank .....	59693	1
23	FINGER - starter.....	58756	2	65	SCREW - rd., #6 x 1/2 .....	80513	16
24	WASHER.....	58851	2	66	LINE - fuel, flexible .....	59828	1
25	SPRING - starter finger .....	58758	2	67	LINE - fuel, formed .....	A-59814	1
26	SCREEN - starter.....	58765	1	68	ELBOW - fuel line.....	58995	1
27	ROTOR - magneto .....	58809	1	69	GASKET.....	59771	1
	....."W"	59857	1	70	CRANKCASE.....	A-59801	1
28	CONDENSER .....	63250	1	71	Includes: BEARING .....	58956	1
	w/clamp .....	59862	1	72	SEAL .....	58688-A	1
29	CLAMP - condenser .....	59622	1	73	STUD.....	55871	4
30	SCREW GROUP - condenser.....	30261	1	74	DELECTOR - air .....	63033	1
	....."W"	57750	1	75	CRANKSHAFT.....	59731	1
31	COVER - breaker box .....	58811	1	76	SCREW - bearing retaining .....	59704	2
	....."P"	59864	1	77	WASHER - lock .....	59705	2
32	TERMINAL BLOCK GROUP.....	A-58924	1	78	BEARING - ball .....	58190-S	1
32A	NUT (only) - terminal .....	59982	1	79	RING - retaining .....	59319-A	1
33	POINT SET - w/felt .....	A-58914	1	80	RING - rollers - set (28) .....	A-58864	1
34	Includes: WASHER - point.....	28028	1	81	CONNECTING ROD .....	A-58769	1
35	CLIP - post .....	28008	1	82	Includes: BEARING .....	58724	1
33	POINT SET w/felt & term block.....	A-59861	1	83	SCREW - socket, 8-36 x 1/2 ..	80889	2
36	SCREW GROUP - points .....	76421	1	84	PISTON & PIN - 2" .....	A-63095	1
	....."W"	57749	1	85	Includes: RING - retaining .....	75120	2
	....."P"	58810	1	86	PISTON RING .....	55038	2
37	GASKET - cover .....	59865	1	87	SCREW - hex, 10-32 x 9/16 ..	80825	2
	....."W"	76413	1	88	CAP - muffler .....	A-63246	1
	....."P"	59866	1	89	STUD .....	59891-A	2
38	SPRING - cover (clip) .....	80899	3	90	BAFFLE .....	63064	1
39	SCREW - hex, 12-24 x 9/16.....	58875-A	1	91	BODY - muffler .....	A-59895	1
40	PLATE & CORE .....	59859	1	92	WASHER - lock, 1/4.....	83009	4
	....."W"	59538	1	93	NUT - 1/4 - 28 .....	81065-2	4
	....."P"	75078	1		SPARK PLUG .....	58917-S	1
41	GASKET .....	59760	1		optional - platinum .....	59558-S	1
42	KEY - rotor.....	58874	1	94	Includes: GASKET.....	25038	1
43	SEAL - felt .....	59860	1	95	CYLINDER 2" .....	59458-A	1
44	COIL .....						
	....."W"						
	....."P"						

NOTE: Ignition Type - "W" indicates Wico, "P" indicates Phelon  
DO NOT INTERCHANGE PARTS!

# HOMELITE XL-500 AUTOMATIC CHAIN SAW

No.	Description	Part No.	Qty.	No.	Description	Part No.	Qty.
1	GASKET - spacer.....	59274	2	39	GASKET .....	59799	1
2	SPACER .....	59718	1	40	SPRING - plunger .....	59293	1
3	SEAT - reed valve.....	59677	1	41	PLUNGER - oil pump.....	A-57834-10	1
4	VALVE - reed .....	59678-A	4	42	Includes: "O" RING-plunger shaft	59074	1
5	SPRING - valve .....	59679	4	43	"O" RING-plunger...	74388	1
6	SCREW - pan, 4-40 x 18 .....	80918	8	44	TUBE - oil line .....	59325	1
7	LINE - fuel (flexible) .....	59828	1	45	"O" RING .....	59765	2
8	GASKET - carburetor.....	59722	1	46	LINE - oil .....	59674	1
9	CARBURETOR - See Note .....	A-58767-B	1	47	FILTER - oil .....	A-58828	1
10	HOUSING & HANDLE .....	A-59931	1	48	SCREW - rd. #6 x 1/2 .....	80513	9
11	Includes: GASKET .....	58884	1	49	COVER - oil reservoir .....	59649	1
	(not shown) COTTER PIN .....	86301	1	50	GASKET - cover .....	59710	1
12	COTTER PIN .....	86324	1	51	"O" RING .....	58785	1
13	PLATE - instruction .....	59221	1	52	LINE - oil (discharge) .....	A-59806	1
14	COVER - air filter.....	58773	1	53	CAP - filler .....	A-56580	1
15	NUT - cover .....	A-58882	1	54	Includes: GASKET .....	56607	1
16	RING - retaining .....	58319-A	1	55	DRIVECASE .....	A-59930	1
17	FILTER ELEMENT.....	58774-1	1	56	Includes: STUD - guide bar ..	59674-A	2
18	GASKET - mounting stud .....	58392-1	1	57	INSERT - threaded.	59896	2
19	BRACKET - mounting.....	A-59822	1	58	SEAL .....	58308	1
20	ROD - choke .....	A-59826	1	59	COTTER PIN .....	86301	1
21	ROD - throttle .....	59763	1	60	SCREW - pin, 1/4-20 x 2 .....	80885	1
22	SCREW - hex, 12-24 x 7/8 .....	80891	5	61	PIN - bar adjusting .....	58783	1
23	SCREW - idle, See Note.....	59916	1	62	NUT - lock, 1/4-20 .....	81108	1
24	BOOT - throttle rod .....	58348	1	63	SCREW - hex, 12-24 x 3/16 ..	80899	4
25	WASHER - lock, #10.....	83046	2	64	SCREW - hex, 12-24 x 1 .....	80864	1
26	SCREW - hex, 10-32 x 2 11/16..	80921	2	65	SCREW - cam .....	59737	1
27	PIN - throttle lock.....	58924	1	66	GASKET .....	59736	1
28	SPRING - lock .....	58405	1	67	"O" RING .....	90872	2
29	COVER - handle.....	A-59213	1	68	SEAL - felt.....	59926	1
	Includes: BUSHING - pin.....	59064	1	69	GEAR - worm .....	59675	1
30	SCREW - pan, 8-32 x 1/2 .....	80560	2	70	SCREW - hex, 6-32 x 3/4 .....	80950	3
31	RING - retaining .....	58409	1	71	HOUSING - oil pump .....	A-59810	1
32	THROTTLE - trigger .....	58859	1	72	PLUNGER & GEAR.....	59689	1
33	GROMMET.....	58362	1	73	BEARING - flanged .....	59719	1
34	BUTTON.....	57289-1	1	74	SCREW - pan, 4-40 x 1/4 .....	80919	2
35	VALVE - check "IN".....	A-59815	1	75	FILTER - oil w/connector ...	A-59804	1
36	VALVE - check "OUT," 90° .....	A-59011	1	76	LINE - oil (intake) .....	A-59819	1
37	GROMMET .....	59770	1	77	Includes: GROMMET.....	59794	1
38	PLUG .....	59798	1				

NOTE: Service replacement carburetor #A58767-B supplied with idle stop screw and spring (used in units with internal adjustment); remove these parts, use external adjustment screw (Index #23).

Refer to Carburetor Parts List #23766-B.  
Use Repair Parts Kit #58972, Gasket Set #58971.

### SPECIAL TOOLS (available on order)

Part No.	Description	Part No.	Description
22808	COMBINATION WRENCH	23800	TOOL-seal assembly (crank and drivecases)
22828	PLIERS - piston snap ring	A-23858	TOOL-crankcase to drivecase assembly
23528	WRENCH - socket screw (conn. rod)	23844	SLEEVE - crankcase assembly
23756	BEARING ASSEMBLY & REMOVAL-conn. rod	23843	SLEEVE - drivecase assembly
23757	BEARING ASSEMBLY & REMOVAL drive and crankcases	23845	PLUG - drivecase assembly
23819	PLUG - needle bearing (sprocket)	23846	ANVIL - crankshaft installation
23758	SEAL ASSEMBLY - drive and crankcases	23136	BODY - jackscrew
23759	SLEEVE - crankshaft assembly	A-23137	JACKSCREW
A-23761-A	REMOVER AND LOCKING BRACKET-rotor	22820-1	COLLAR - bearing
A-23696	REMOVER - threaded spider	23884	SLEEVE - crankshaft installation
		A-23841	WRENCH - insert (guide bar stud)

#### PAINT

22771	SPRAY CAN - red
23343	SPRAY CAN - green
23560	SPRAY CAN - white

HOMELITE **XL-600** AUTOMATIC CHAIN SAW

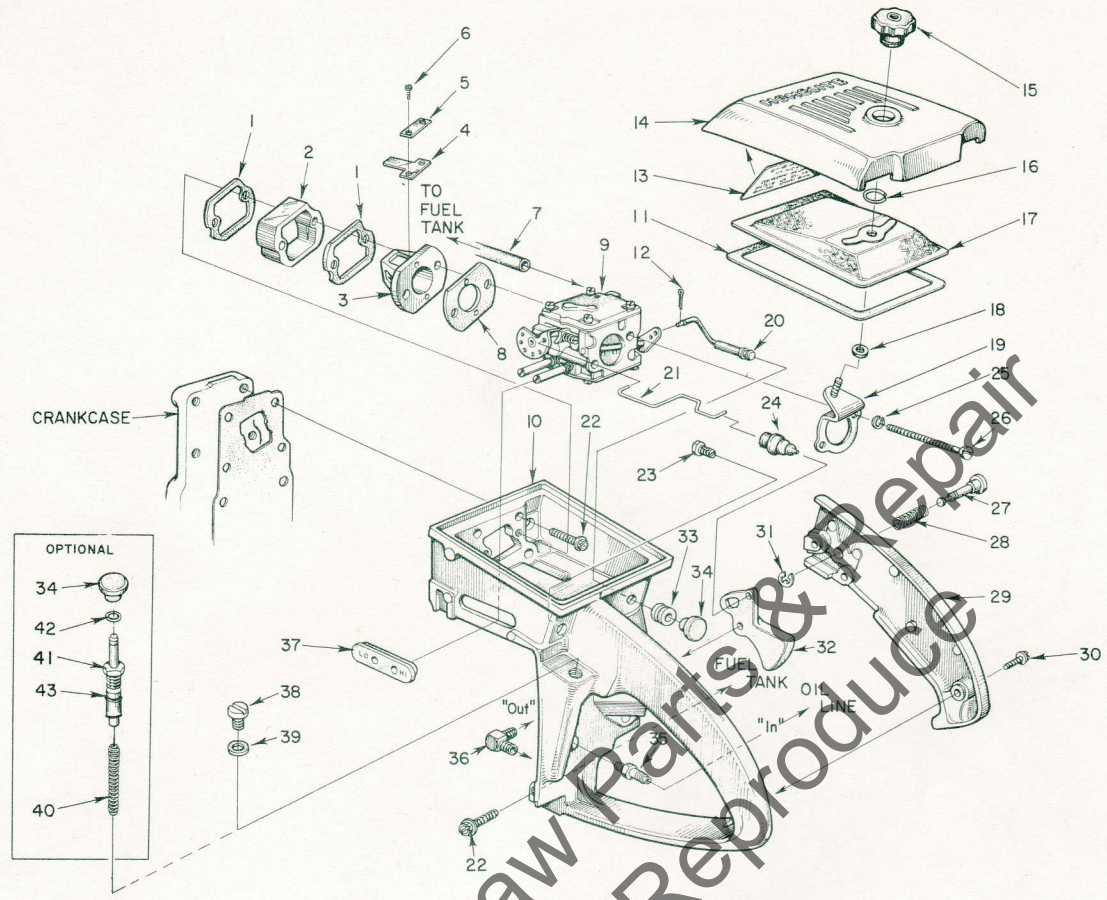


FIGURE 3

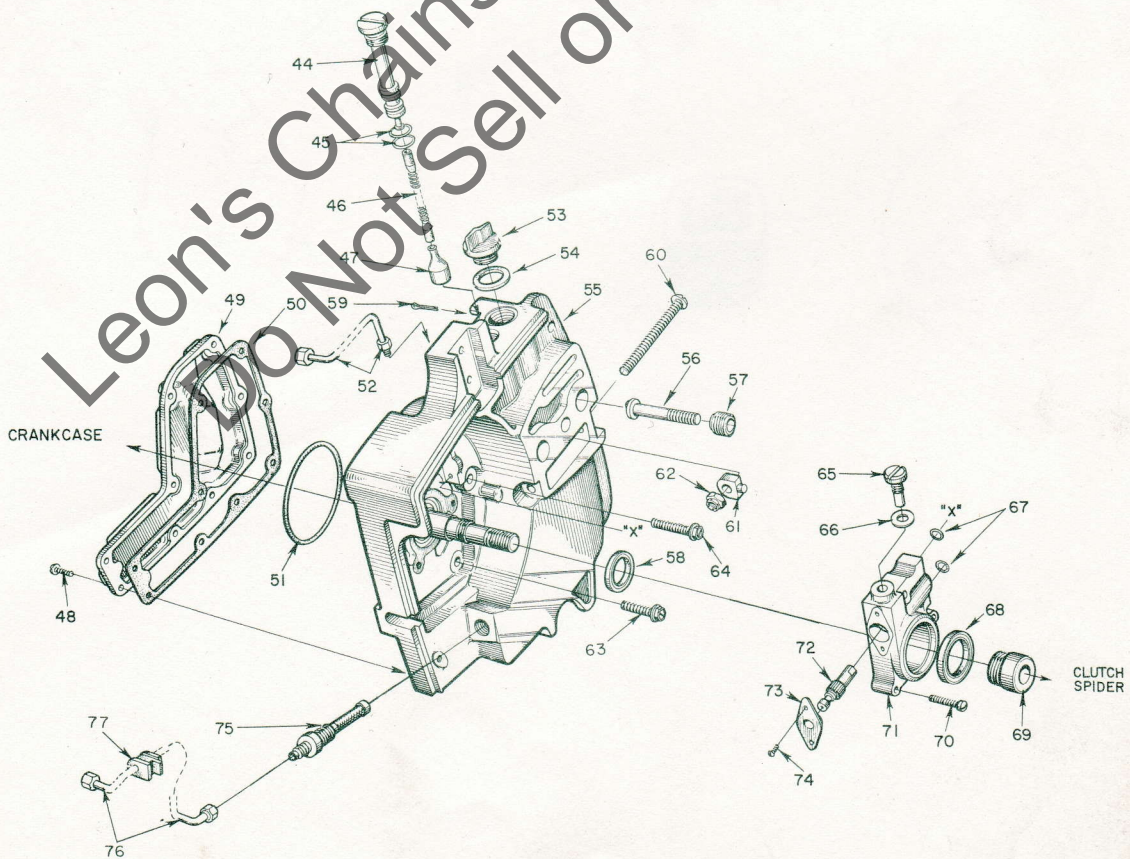
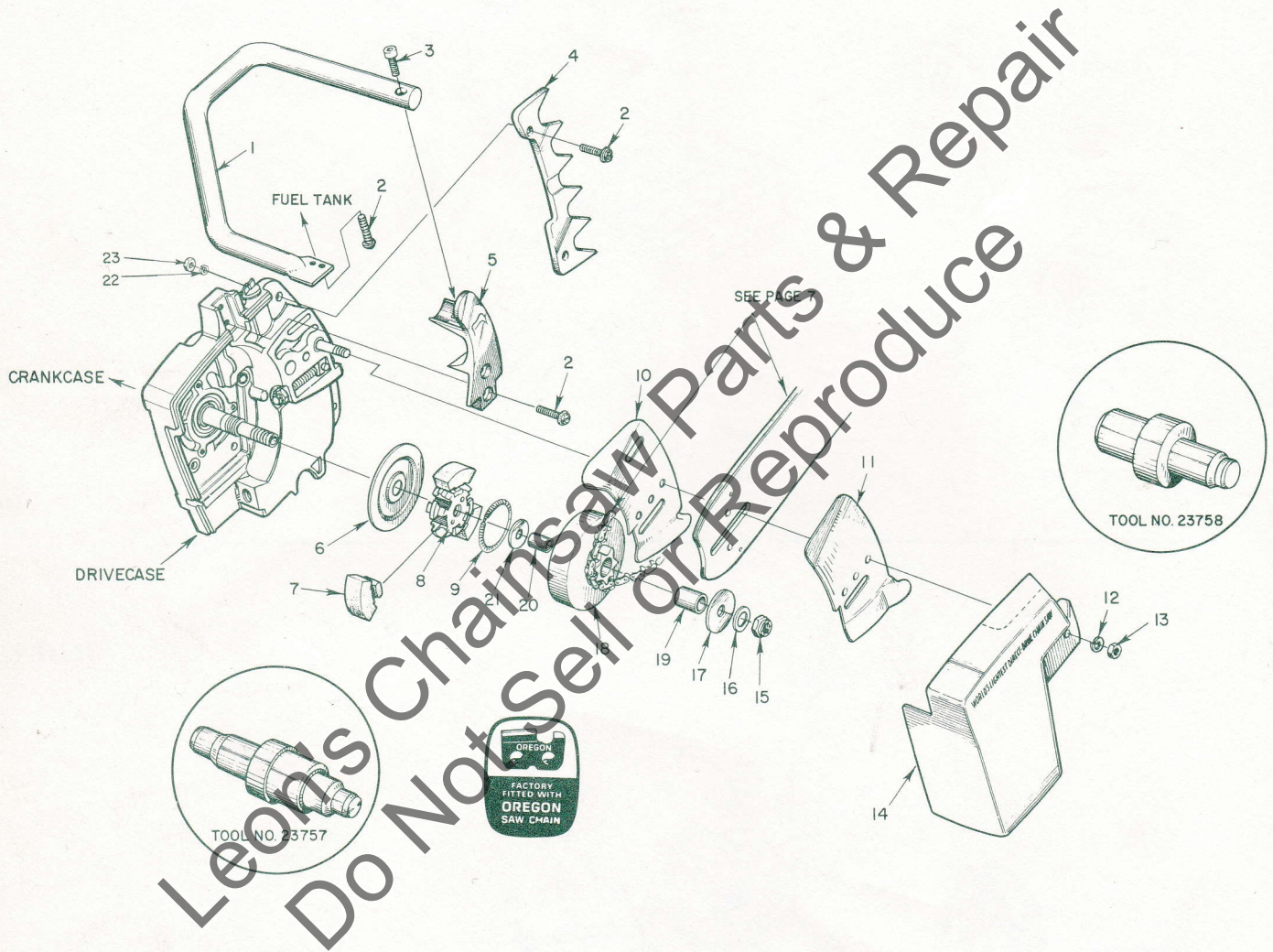


FIGURE 4

HOMELITE **XL-500** CHAIN SAW  
AUTOMATIC

FIGURE 5



# HOMELITE XL-500 AUTOMATIC CHAIN SAW

No.	Description	Part No.	Qty.	No.	Description	Part No.	Qty.
1	HANDLE BAR .....	A-59790	1	14	COVER - drive case .....	58750-2	1
2	SCREW - hex, 12-24 x 3/4.....	80867	6	15	NUT - lock, 3/8-24 .....	81192	1
3	SCREW - socket.....	80428	1	16	WASHER - flat, 3/8 .....	84010-1	1
4	BUMPER PLATE.....	58961	1	17	WASHER - thrust (outer) .....	58926	1
5	BRACKET - handle bar .....	59651-2	1	18	SPROCKET & DRUM - See		
6	COVER - clutch .....	58751	1		Note		
7	SHOE - clutch.....	58928	3		standard - 7 tooth, 3/8" pitch..	A-59552	1
8	SPIDER - clutch.....	58927-1	1		optional - 7 tooth, .404 pitch..	A-59555	1
9	SPRING - clutch.....	55123-C	2	19	Includes: BEARING - needle ..	72311	1
10	PLATE - inner guide bar .....	58781	1	20	RACE - inner .....	55584	1
11	PLATE - outer guide bar.....	58782	1	21	WASHER - thrust (inner) .....	58833	1
12	WASHER - lock, 5/16.....	83002	2	22	WASHER - lock, #12.....	83056	2
13	NUT - hex, 5/16 - 18 .....	81196	2	23	NUT - 12-24 .....	81068	2

NOTE: Standard 3/8" pitch sprockets used with 3/8" pitch chain, optional .404 pitch sprockets require .404 pitch chain. See below.

GUIDE BARS - .050 gauge					.050 gauge CHAIN 3/8" pitch		
Hard Track		Perma-Hard Tip		≠ Roller Nose			
Part No.	Size	Part No.	Size	Part No.	Size	Part No.	Links
HT-1250	12"	GW-1250	12"	RN-1650	16"	72D-48E	48
		GW-1650	16"	RN-2050	20"	72D-59E	59
		GW-2050	20"	RN-2450	24"	72D-69E	69
		GW-2450	24"	RN-3050	30"	72D-81E	81
		GW-3050	30"			72D-108E	108
≠ #A-59925 - Roller Guide & Rivet Kit - includes three #59344 rivets.							
.063 gauge CHAIN .404 pitch							
						52AC3-73E	73
(14" Bow Guide)							

### ACCESSORIES (available on order)

- #A-52971-A BOW GUIDE - includes #59194 CHAIN GUARD, #59324 SPUR with parts listed below. Use #72D-81E CHAIN.
- #A-52972-A UTILITY GUIDE - includes #59103 CHAIN GUARD, #59343 SPUR with parts listed below. Use #72D-69E CHAIN.
- #A-52994-A CLEARING GUIDE - includes #59103 CHAIN GUARD, #59343 SPUR with parts listed below. Use #72D-81E CHAIN.
- #A-53024-A BOW GUIDE, 14", .063 - includes #59194 CHAIN GUARD, #59324 SPUR with parts listed below. Use #52AC3-73E CHAIN.

### GUIDE ATTACHMENT PARTS:

#75729	SPACER - spur .....	1
#80546	SCREW - hex hd., 5/16 x 1-1/4 .....	2
#81112	NUT - hex 5/16 .....	2
#80676	SCREW - hex hd., 12-24 x 5/8 .....	2
#83056	WASHER - lock, #12 .....	2
#81068	NUT - hex #12 .....	2

**You'll  
SPEED WORK  
and make  
MORE MONEY  
with...**

# **HOMELITE**

**SELF-PRIMING PUMPS**



**DEPENDABLE GENERATORS**



**POWERFUL ONE-MAN CHAIN SAWS**



**ONE-MAN CONCRETE VIBRATORS**



**ELECTRIC BUILDER'S HAMMERS**



## **HOMELITE**

A **textron** DIVISION

**PORT CHESTER, N. Y.**

Printed in United States of America

Part No. 23889

*Leon's Chainsaw Parts & Repair  
Do Not Sell or Reproduce*