

PART NO. 24752 REV. 4

Printed in U.S.A.

Price .35¢

PARTS LIST



HOMELITE®

XL-2

**Automatic
Oiling**

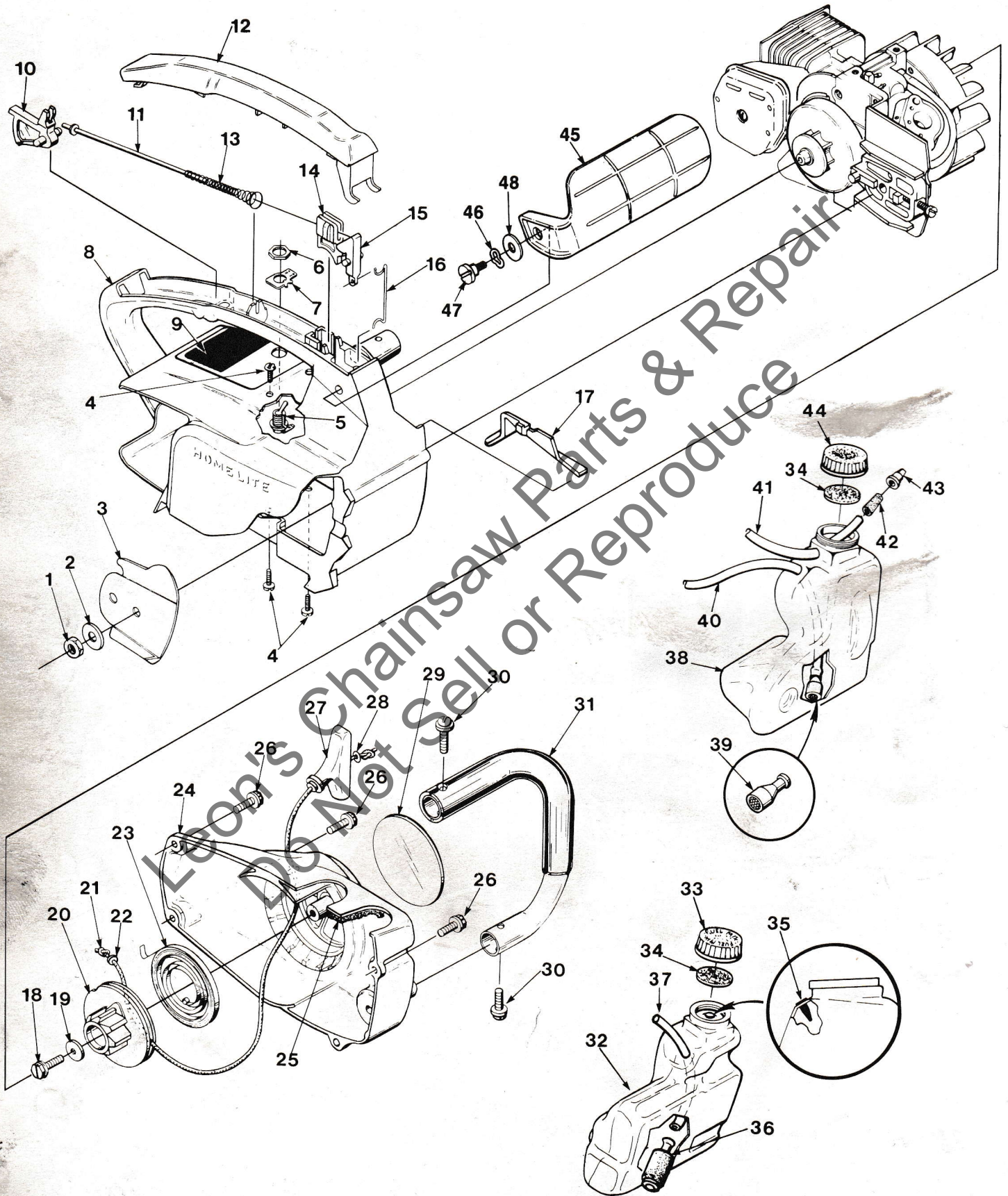
Chain Saw

HOMELITE TEXTRON

Homelite Division of Textron Inc.

XL-2

FIGURE 1



NO.	DESCRIPTION	PART NO.	QTY.	NO.	DESCRIPTION	PART NO.	QTY.
1	NUT- Guide bar, 1/4-28	81065-2	1	38	TANK- Oil	97359 A-70898-A	1
2	WASHER- Flat	69309-A	1		Includes:		
3	PLATE- Guide bar	69360-1	1	39	FILTER- Oil (note 4)	A-68593	1
4	SCREW- Pan hd., 10-24 x 1/2	96620	4	40	LINE- Oil	70309-24	1
5	SWITCH- Stop (grounding)	A-63938	1	41	LINE- Pressure	A-69358-B	1
	Includes:				Includes:		
6	NUT- Hex	72084-A1	1	42	CONNECTOR- Oil	69659-B	1
7	PLATE- "On-Off"	70834	1	43	VALVE- Check (duckbill)	69451	1
8	HOUSING- Engine	A-69882-B	1	44	CAP- Tank (oil) (black) (note 1)	A-70893-B	1
	Includes:				Includes:		
9	PLATE- Starting instructions	70835	1		GASKET- Fuel filler cap (Note 2)	94838-A	1
10	TRIGGER- Rear	69106-A	1	45	GUARD- Hand (note 3)	A-70796-B	1
11	ROD- Throttle	A-69136	1		Includes:		
12	COVER- Handle	69140-A	1	46	WASHER- Curved spring	95694	1
13	SPRING- Throttle rod	69249	1	47	SCREW- Shoulder 10-32 self-tapping	95713	1
14	TRIGGER- Front	69105	1	48	WASHER- Flat	96102	1
15	LEVER- Throttle	69107	1				
16	ROD- Throttle (front)	69255-C	1				
17	COVER- Air filter	69263	1				
18	SCREW- Hex washer hd., 10-32 x 5/8	80704	1				
19	WASHER- Flat	63606-1	1				
20	PULLEY- Starter	69158-A	1				
21	ROPE- Starter #4, 34" long	A-93874-A	1				
	Includes:						
22	WASHER- Nylon	93862	1				
23	SPRING- Rewind	69217	1				
24	HOUSING- Rewind starter	A-69540	1				
	Includes:						
25	FILTER- Fuel tank valve	69443	1				
26	SCREW- Hex 10-32 x 5/8	80704	4				
27	GRIP- Starter rope	70211	1				
28	WASHER- Flat	84025	1				
29	DECAL- XL-2	69346	1				
30	SCREW- Pan washer hd., 10-32 x 5/8	82239	2				
31	HANDLE BAR	A-70219-A	1				
32	TANK- Fuel	A-70899-B	1				
	Includes:						
33	CAP- Tank fuel (red) (note 1)	A-70894-B	1				
	Includes:						
34	GASKET- Fuel filler cap (note 2)	94838-A	2				
35	VALVE- Check (duckbill)	69451	1				
36	FILTER- Fuel	96639	1				
37	LINE- Fuel	70310-29	1				

NOTE 1: Tanks with internal threads require A-70445 fuel cap and A-70446 oil cap. If internal threads in tank are worn, order new external threaded tanks.

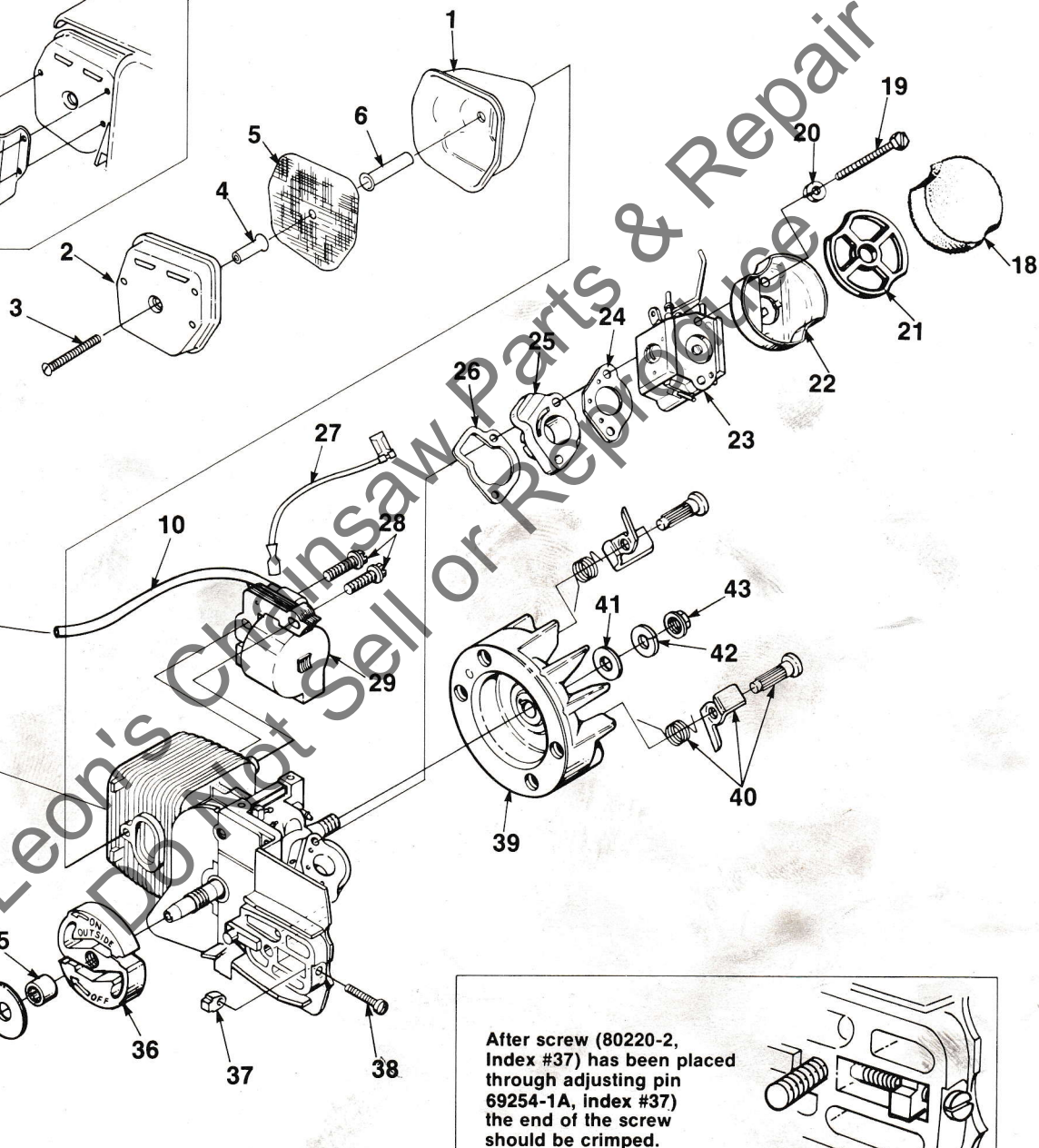
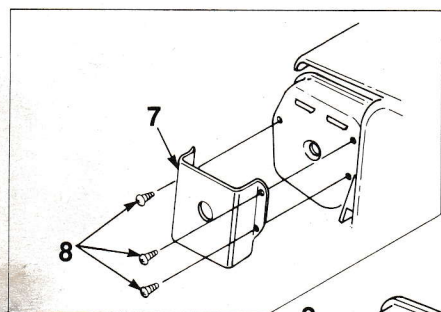
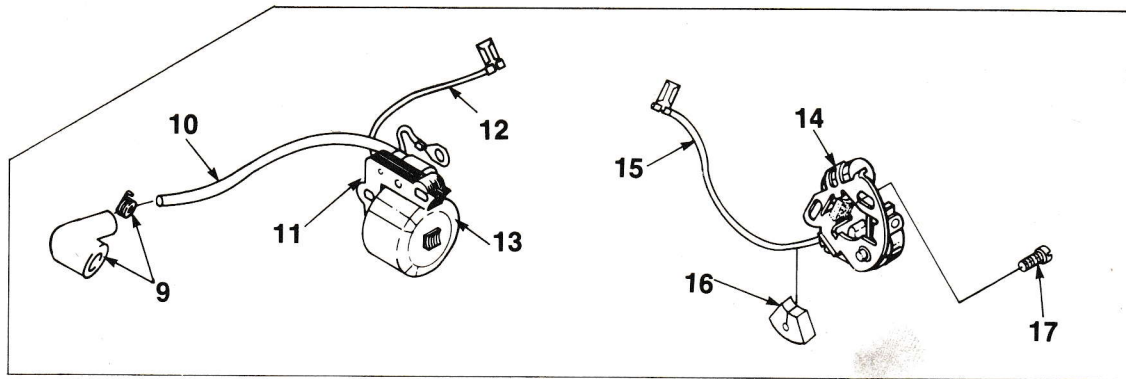
NOTE 2: Use 70826 Gasket in A-70893 and A-70894 external thread caps. Use 69585 gasket for caps with internal threads.

NOTE 3: Units with steel handguard require 70728 Belleville washer, 70748 spacer, 80572 screw 10-32 x 5/8 (mag hsg) or 82312 screw for plastic housing.

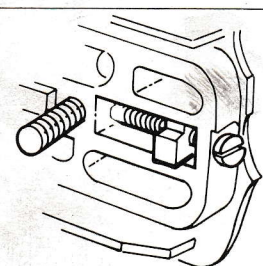
NOTE 4: Use A-78889 oil filter for XL units with pressure feed oil system.

XL-2

FIGURE 2



After screw (80220-2, Index #37) has been placed through adjusting pin 69254-1A, index #37) the end of the screw should be crimped. This will prevent the screw from backing out.



NO.	DESCRIPTION	PART NO.	QTY.	NO.	DESCRIPTION	PART NO.	QTY.
	MUFFLER	A-94051-B	1	27	LEAD- Ground (Solid State)	A-94721	1
	Includes:			28	SCREW- Hex w/washer, 8-32 x 3/4	82248	2
1	BODY MUFFLER	93986	1	29	MODULE- Ignition (Solid State)	94711	1
2	CAP- Muffler w/shield	A-95428	1	30	TERMINAL- Spark plug (Solid State) Service w/#9		1
	SPARK ARRESTOR	A-94139	1	31	SPARK PLUG- Champion DJ-7J	68616-S	1
	Includes:			32	SPROCKET & DRUM (375 & 37 chain) 6 Tooth (primary source)	A-95651-A	1
3	SCREW- Pan hd.	82320	1		SPROCKET & DRUM (375 & 37 chain) 6 tooth (alternate source)	A-70221-D	1
4	SPACER	93989	1		Includes:		
5	SCREEN- Spark arrestor	D-93991	1	33	WASHER- Thrust (clutch)	95299	1
6	SPACER	93990	1	34	NUT- Locking	81112	1
7	KIT- Muffler temperature (XL-2W)	A-93993	1	35	BEARING- Needle	68512	1
	Includes:			36	CLUTCH "S"	A-70351-A	1
8	SCREW- #4 x .250	82342	3	37	PIN- Adjusting (see insert)	69254-1A	1
	SPACER (see index #4)	93989	1	38	SCREW- Adjusting (fil hd. 8-32 x 1) (see insert)	80220-2	1
	SCREEN- Spark arrestor (see index #5)	93991	1	39	ROTOR & STARTER PAWL (Solid State) PHELON	A-95007	1
	SPACER- (See Index #6)	93990	1		ROTOR & STARTER PAWL (Point Ignition) PHELON	A-69297-C	1
9	TERMINAL- Spark plug	A-33055	1		Includes:		
10	LEAD- High tension (note 1)	69326	1	40	PAWL- Starter	A-70285-D	1
11	CORE- Coil (point ignition)	69324	1	41	WASHER- Flat	84065-1	1
12	LEAD- Stop switch (point ignition)	A-95051	1	42	WASHER- Lock	83002	1
13	COIL- Ignition (point ignition)	69323	1	43	NUT- Rotor-5/16-24	81117	1
	RETAINER- Coil (not shown) (point ignition)	69325	1				
14	POINT SET- Breaker (point ignition)	A-69336	1				
	Includes:						
15	LEAD- Electrical	70249	1				
16	SEAL- Lead (point ignition)	69247	1				
17	SCREW- Point set (point ignition)	88026	2				
18	FILTER- Air	69141	1				
19	SCREW- Hex hd., 10-32 x 2 1/4	80481	2				
20	WASHER- Lock, #10	83006-1	2				
21	RETAINER- Air filter	69457	1				
22	CUP- Air filter	69148	1				
23	CARBURETOR- HDC-65	A-94649-A	1				
	CARBURETOR- Zama C2S-H5	A-96481	1				
24	GASKET- Carburetor	65016	1				
25	MANIFOLD- Intake	A-69373-A	1				
26	GASKET- Intake manifold	69143	1				

NOTE 1: For solid state ignition, cut wire to 6 1/2".

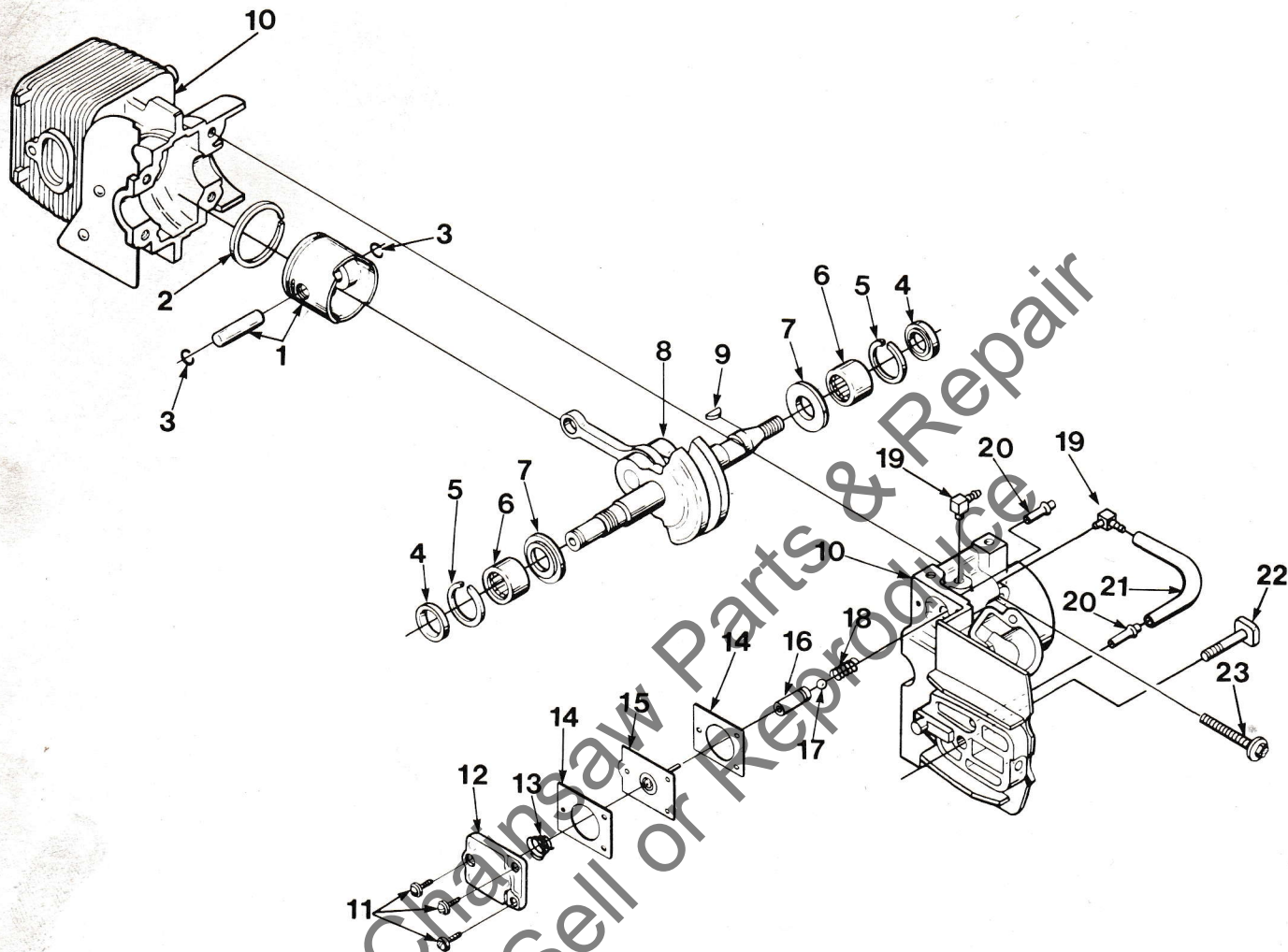
NOTE 2: Retaining ring 93972 must never be reused once it has been removed. 93972 is required for crankshafts with out threaded clutch ends.

ACCESSORY:

SPROCKET & DRUM
(.250 pitch, 9 tooth)
includes items #33 and 34.

XL-2

FIGURE 3



NO.	DESCRIPTION	PART NO.	QTY.
1	PISTON & PIN Includes:	A-69393	1
2	PISTON RING	69312	1
3	RING- Piston pin retaining	65261	2
4	SEAL	94638	2
5	SPACER- Seal	69407	2
6	BEARING- Needle BEARING- Needle (Opt.)	12530	2
7	WASHER- Thrust	68513	2
8	CRANKSHAFT (Solid State) CRANKSHAFT (Point Ignition) Includes:	69093-B	2
	NUT (not shown)	A-94992	1
9	KEY- Magneto (See above)	A-96385	1
10	CYLINDER & CRANKCASE (Solid State) CYLINDER & CRANKCASE (Point Ignition) Includes:	81112	1
	SCREW- Pan hd., 6-32 x 3/8	A-95071	1
11		A-69421-B	1

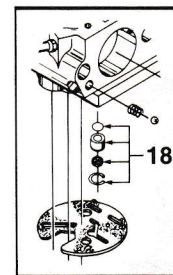
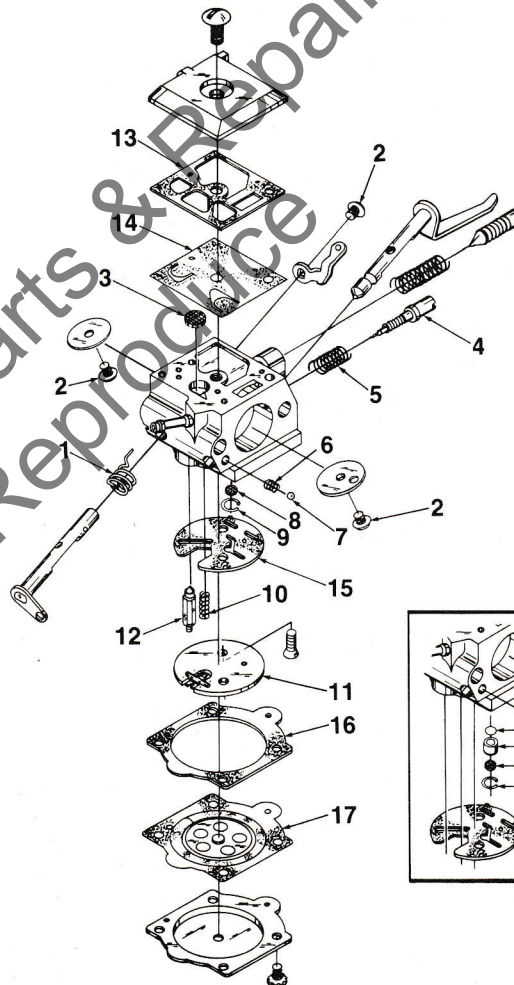
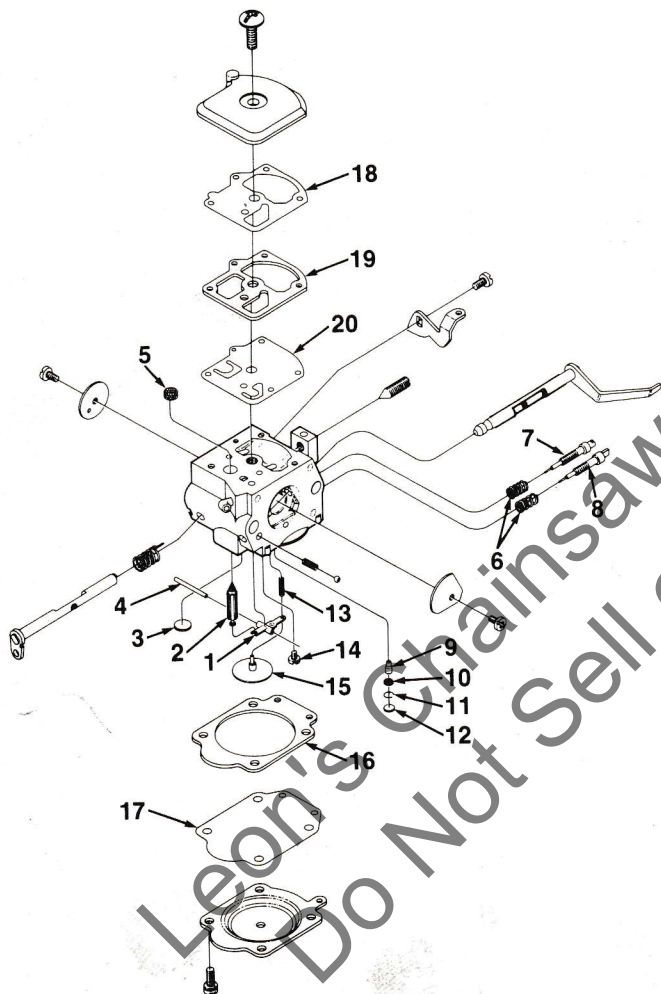
NO.	DESCRIPTION	PART NO.	QTY.
12	COVER- Oil pump	69224-1C	1
13	SPRING- Oil pump	69447	1
14	GASKET- Oil pump	69244-1	2
15	PLUNGER- Oil pump	A-12356-B	1
16	BODY- Oil pump	69343-1	1
17	BALL- Check valve	60051	1
18	SPRING- Check valve	68570	1
19	FITTING- Oil line	70204	2
20	FITTING- Tube	69833	2
21	LINE- Oil	70161	1
22	BOLT- Guide bar	69195	1
23	SCREW- Sem hex hd., 8-32 x 1	88044	4

ZAMA
CARBURETOR
C2S-H5

A-96481

WALBRO
CARBURETOR
HDC-65

A-94649-A



NO.	DESCRIPTION
96484	REPAIR KIT (1-20)
96485	GASKET/DIAPHRAGM SET (16-20)

NO.	DESCRIPTION
94056	REPAIR KIT (includes 1-17)
94701	GASKET DIAPHRAGM SET (13-17)
93910-A	CHECK VALVE REPAIR KIT (18)
64229	INLET NEEDLE (#12)

TOOLS

SILASTIC (crankcase sealing)	24823
PLIERS- Tru-ARC (sprocket retaining ring)	17198
PULLER— Magneto rotor	A-24747-A
Includes:	
BOLT- 5/16-18 x 1 3/4 (1)	80288
NUT- Hex 5/16-18 (2)	81196
WRENCH- Hex soc. 5/32 (for 10-24 screws)	22126
WRENCH- Hex soc. 9/64 (for socket head connecting rod screws)	23528
WRENCH- Spanner (clutch)	A-93791
Includes:	
PIN- Clutch spanner (2)	23717-A
TOOL- Carburetor check valve installation	24972
WRENCH	24814
WRENCH- Socket	68651

ACCESSORIES

GUN- Grease	DA-52713-A
GASKET- Oil pump body (repair)	69596
KIT- Repair (sprocket nose bar) (.025 pitch)	A-69682-B
KIT- Repair (sprocket nose bar) 37 & 375 pitch	A-70239-C
KIT- Spark arrestor (used with A-93686 Muffler and A-69253-1 Muffler)	A-69586-B
Includes:	
SCREW- Self tapping	80328
LINE- Fuel (10 ft.)	70310-99
LINE- Oil (10 ft.)	70309-99
SAFE•T•TIP	DA-70776-A
Includes:	
SCREW- (Special)	93695
GREASE- Multi-use (Sprocket bearing-PT Guide Bar)	17193
CARRYING CASE	94215-A
STARTING ROPE- 250 ft. reel #4	68848
COVER- Bar	92693

HOMELITE DIVISION OF TEXTRON INC.

14401 Carowinds Boulevard
P.O. Box 7047
Charlotte, N.C. 28217

HOMELITE TEXTRON

Homelite Division of Textron Inc.