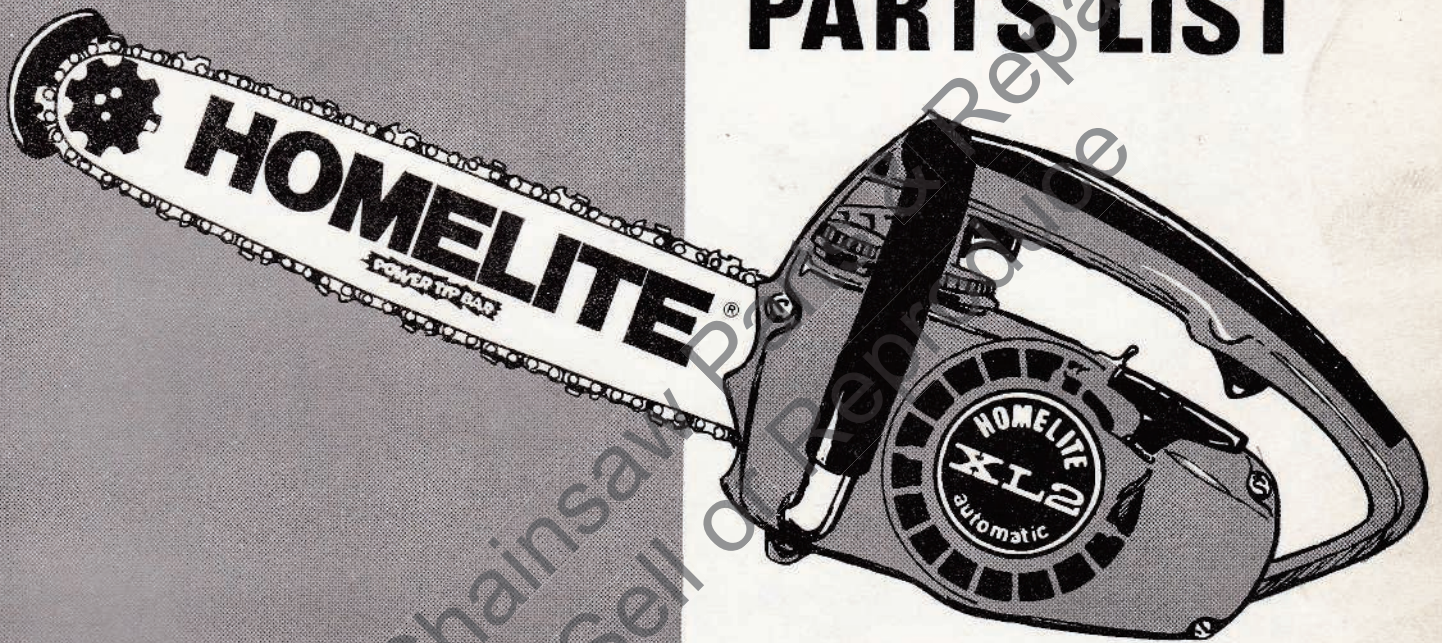


HOMELITE®

XL-2

PARTS LIST



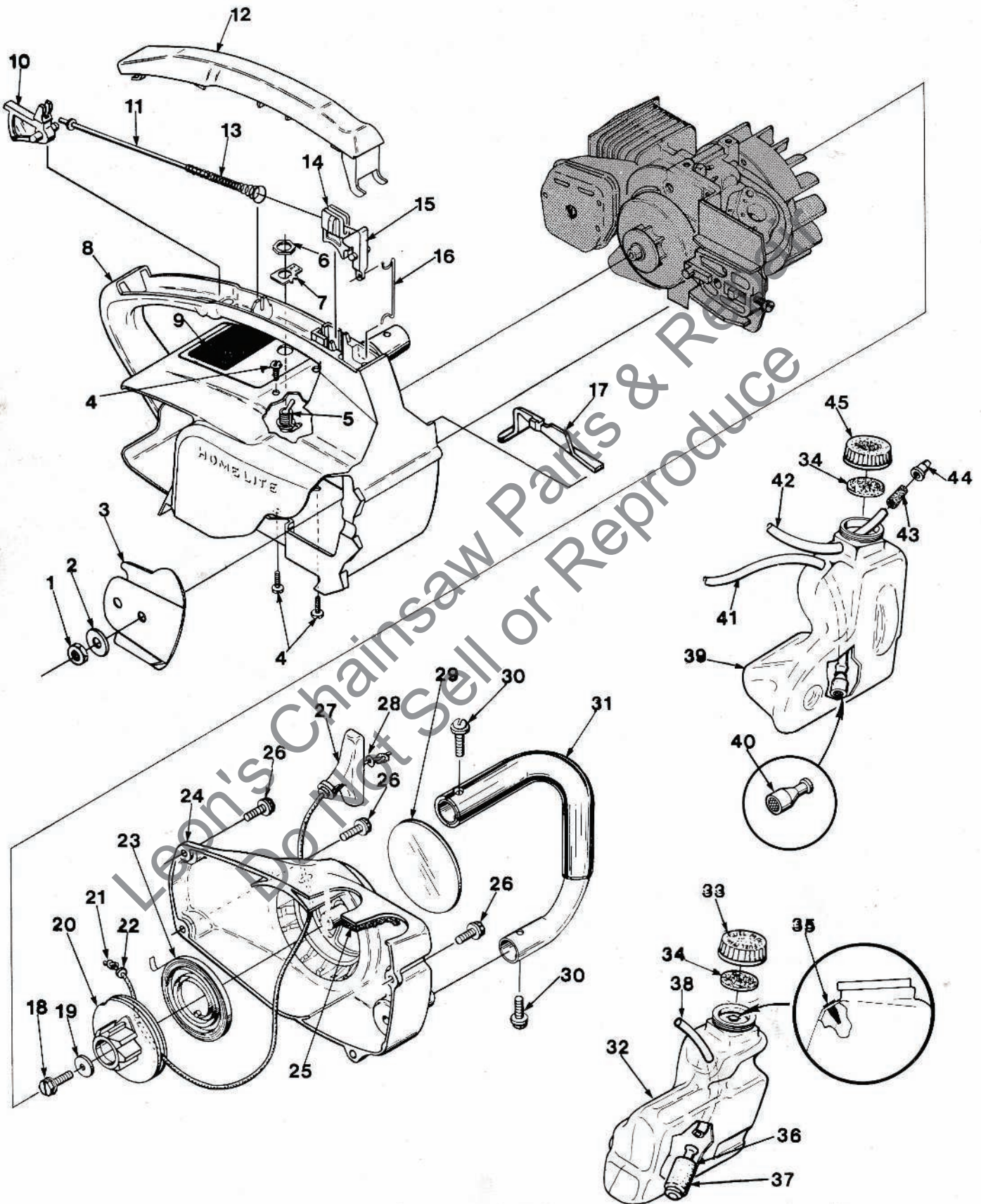
*Automatic
Oiling
Chain Saw*

HOMELITE
TEXTRON

Homelite Division of Textron Inc.

XL-2

FIGURE 1



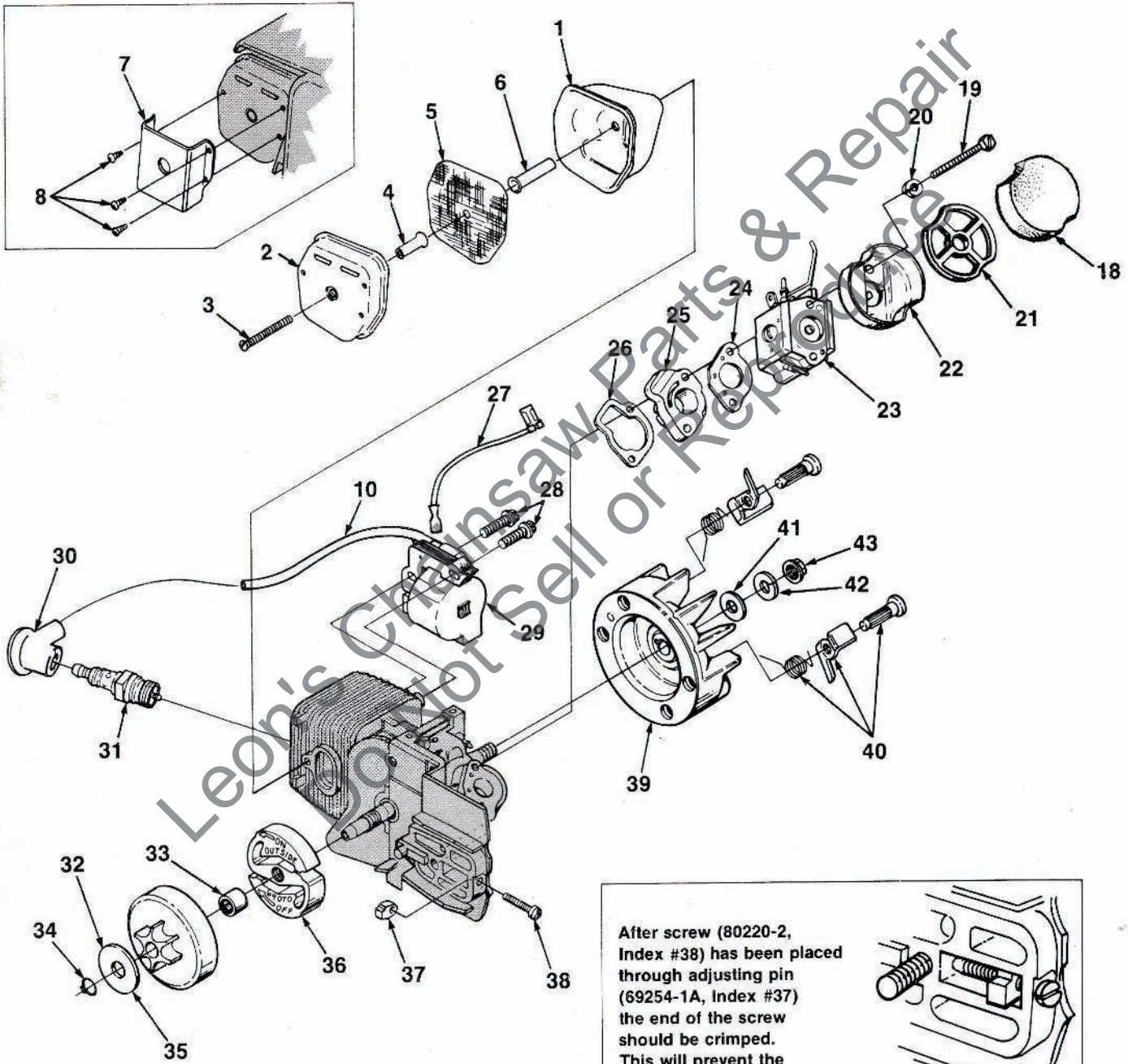
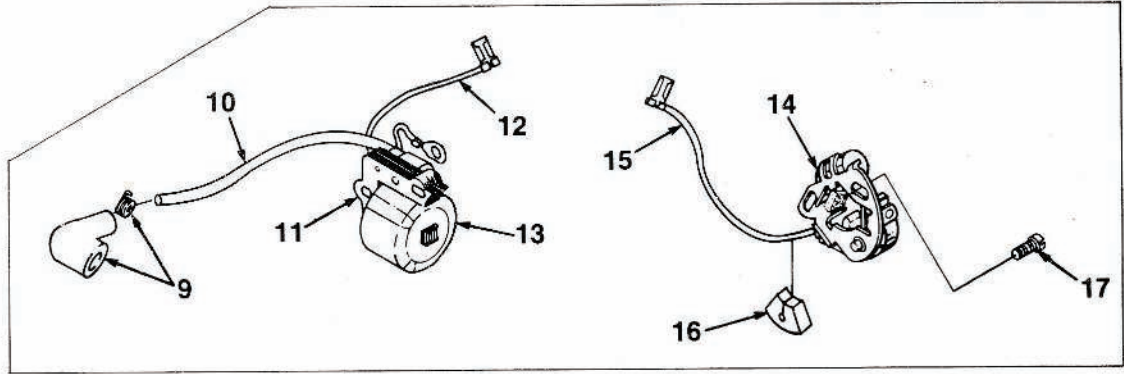
XL-2 FIGURE 1

No.	Description	Part No.	Qty.	No.	Description	Part No.	Qty.
1	NUT- Guide bar, 1/4 - 28	81065-2	1	30	SCREW- Pan washer hd., 10-32 x 5/8	82239	2
2	WASHER- Flat	69309-1	1	31	HANDLE BAR	A-70219-A	1
3	PLATE- Guide bar	69360	1	32	TANK- Fuel	A-70899	1
4	SCREW- Pan hd., 10-24 x 1/2	82216	4		Includes:		
5	SWITCH- Stop (grounding)	A-63938	1	33	CAP- Tank fuel (red) (Note 1)	A-70894-A	1
	Includes:				Includes:		
6	NUT- Hex	72084-A1	1	34	GASKET- Fuel filler cap (Note 2)	94838	2
7	PLATE- "On-Off"	70834	1	35	VALVE- Check (duck bill)	69451	1
8	HOUSING- Engine	A-69882-B	1	36	FILTER- Fuel	A-69923	1
	Includes:				Includes:		
9	PLATE- Starting instructions	70835	1	37	ELEMENT- Felt	64083	1
10	TRIGGER- Rear	69106-A	1	38	LINE- Fuel	70310-29	1
11	ROD- Throttle	A-69136	1	39	TANK- Oil	A-70898	1
12	COVER- Handle	69140-A	1		Includes:		
13	SPRING- Throttle rod	69249	1	40	FILTER- Oil	A-68593	1
14	TRIGGER- Front	69105	1	41	LINE- Oil	70309-24	1
15	LEVER- Throttle	69107	1	42	LINE- Pressure	A-69358	1
16	ROD- Throttle (front)	69255-C	1		Includes:		
17	COVER- Air filter	69263	1	43	CONNECTOR- Oil	69659-1A	1
18	SCREW- Hex washer hd., 10-32 x 5/8	80704	1	44	VALVE- Check (duck bill)	69451	1
19	WASHER- Flat	63606	1	45	CAP- Tank (Oil) (Black) (Note 1)	A-70893-A	1
20	PULLEY- Starter	69158	1		Includes:		
21	ROPE- Starter #4, 34" long	A-93874	1		GASKET- Fuel filler cap (Note 2)	94838	1
	Includes:				(see #34)		
22	WASHER- Nylon	93862	1				
23	SPRING- Rewind	69217	1				
24	HOUSING- Rewind starter	A-69540	1				
	Includes:						
25	FILTER- Fuel tank valve	69443	1				
26	SCREW- Hex 10-32 x 5/8	80704	4				
27	GRIP- Starter rope	70211	1				
28	WASHER- Flat	84025	1				
29	DECAL- XL-2	69346	1				

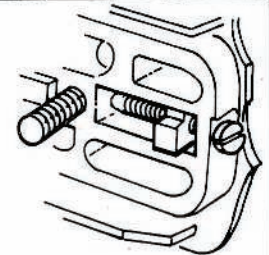
NOTE 1: Tanks with internal threads require A-70445 Fuel cap and A-70446 Oil cap. If internal threads in tank are worn order new external threaded tank.

NOTE 2: Use 70826 Gasket in A-70893 and A-70894 external thread caps. Use 69585 gasket for caps with internal threads.

XL-2 FIGURE 2



After screw (80220-2, Index #38) has been placed through adjusting pin (69254-1A, Index #37) the end of the screw should be crimped. This will prevent the screw from backing out.

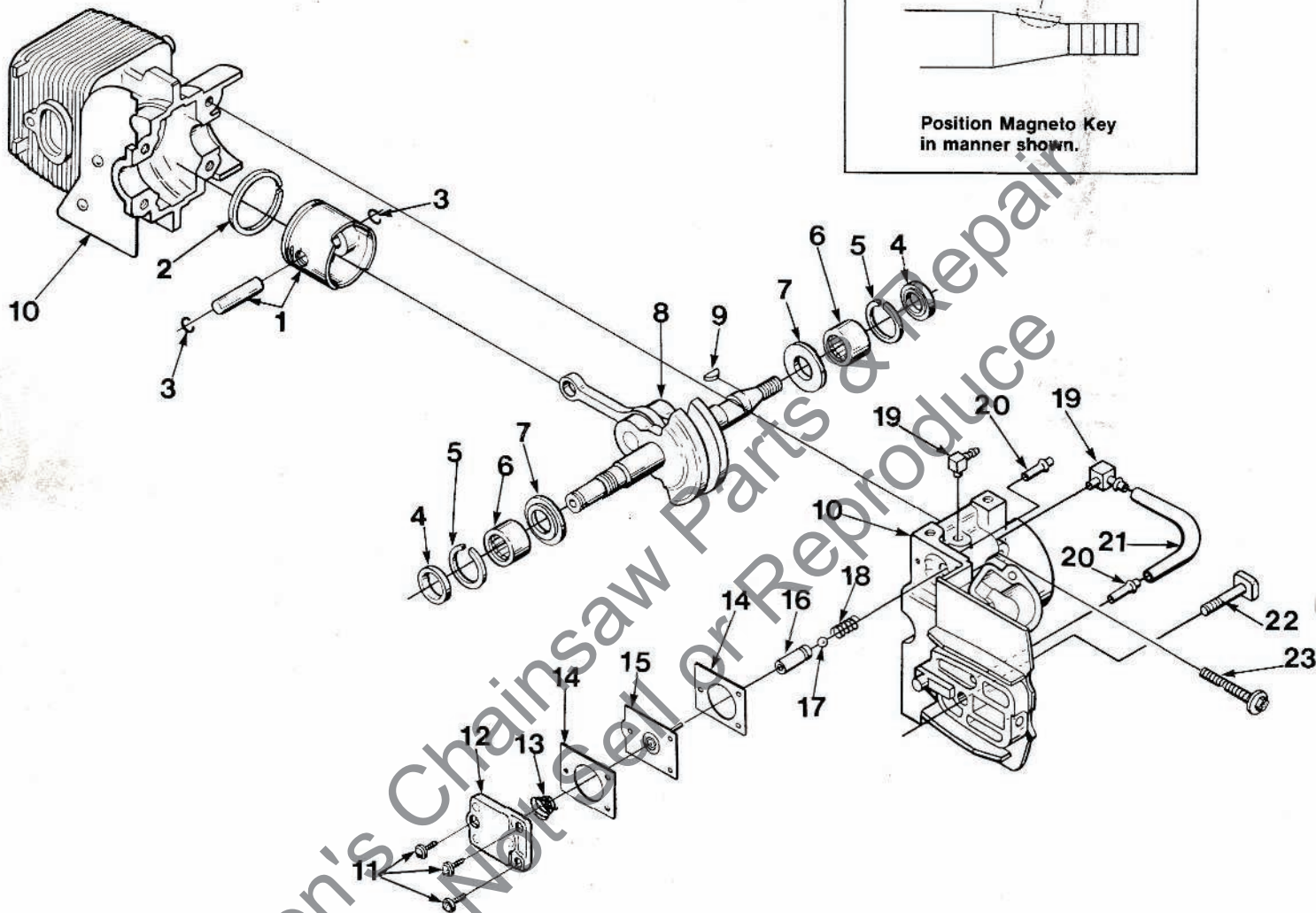


XL-2 FIGURE 2

No.	Description	Part No.	Qty.	No.	Description	Part No.	Qty.
1	MUFFLER	A-94051-A	1	22	CUP- Air filter	69148	1
	Includes:			23	CARBURETOR- HDC-48A	A-94053	1
2	CAP- Muffler	93985	1		CARBURETOR- HK-2B	A-70551	1
	SPARK ARRESTOR	A-94139	1	24	GASKET- Carburetor	65016	1
	Includes:			25	MANIFOLD- Intake	A-69373-A	1
3	SCREW- Pan hd.	82320	1	26	GASKET- Intake manifold	69143	1
4	SPACER	93989	1	27	LEAD- Ground (Solid State)	A-94721	1
5	SCREEN- Spark arrestor	93991	1	28	SCREW- Hex w/washer, 8-32 x 3/4	82248	2
6	SPACER	93990	1	29	MODULE- Ignition (Solid State)	A-94711	1
7	KIT- Muffler temperature (XL-2W)	A-93993	1	30	TERMINAL- Spark plug (Solid State) Service w/#9		1
	Includes:			31	SPARK PLUG- Champion DJ-7J	68616-S	1
8	SCREW- #4 x .250	82342	3	32	SPROCKET & DRUM (6 Tooth 37 & 37.5 chain)	A-70221-B	1
	SPACER- (See Index #4)	93989	1		Includes:		
	SCREEN- Spark Arrestor (See index #5)	93991	1	33	BEARING- Needle	68512	1
	SPACER- (See Index #6)	93990	1	34	RING- Retaining - Clutch	93972	1
9	TERMINAL- Spark plug	A-33055	1	35	WASHER- Thrust (clutch)	69138	1
10	LEAD- High tension (Note 1)	69326	1	36	CLUTCH- "S"	A-70351-A	1
11	CORE- Coil (Point Ignition)	69324	1	37	PIN- Adjusting (see insert)	69254-1A	1
12	LEAD- Stop switch (Point Ignition)	69321	1	38	SCREW- Adjusting (fil hd. 8-32 x 1) (see insert)	80220-2	1
13	COIL- Ignition (Point Ignition)	69323	1	39	ROTOR & STARTER PAWL (Solid State) PHELON	A-94717	1
	RETAINER- Coil (Not shown) (Point Ignition)	69325	1		ROTOR & STARTER PAWL (Point Ignition) PHELON	A-69297-A	1
14	POINT SET- Breaker (Point Ignition)	A-69336	1		Includes:		
	Includes:			40	PAWL- Starter	A-70285-A	1
15	LEAD- Electrical	70249	1	41	WASHER- Flat	84065-1	1
16	SEAL- Lead (Point Ignition)	69247	1	42	WASHER- Lock	83002	1
17	SCREW- Point set (Point Ignition)	88026	2	43	NUT- Rotor-5/16-24	81117	1
18	FILTER- Air	69141	1		NOTE 1: For Solid State Ignition cut wire to 6 1/2".		
19	SCREW- Hex hd., 10-32 x 2 1/4	80481	2		ACCESSORY		
20	WASHER- Lock, #10	83006-1	2		SPROCKET & DRUM	A-69587-A	1
21	RETAINER- Air filter	69457	1		(.250 Pitch 9 tooth)		
					Includes items #33 and #34		

XL-2

FIGURE 3



No.	Description	Part No.	Qty.
1	PISTON & PIN Includes:	A-69393	1
2	PISTON RING	69312	1
3	RING- Piston pin retaining	65261	2
4	SEAL	94638	2
5	SPACER- Seal	69407	2
6	BEARING- Needle	12530	2
	BEARING- Needle (Opt.)	68513	2
7	WASHER- Thrust	69093-A	2
8	CRANKSHAFT (Solid State)	A-94712	1
	CRANKSHAFT (Point Ignition)	A-70352	1
9	KEY- Magneto (see above)	69250	1
10	CYLINDER & CRANKCASE (Solid State)	A-95071	1
	CYLINDER & CRANKCASE (Point Ignition)	A-69421-B	1
	Includes:		
11	SCREW- Pan hd., 6-32 x 3/8	80571	3

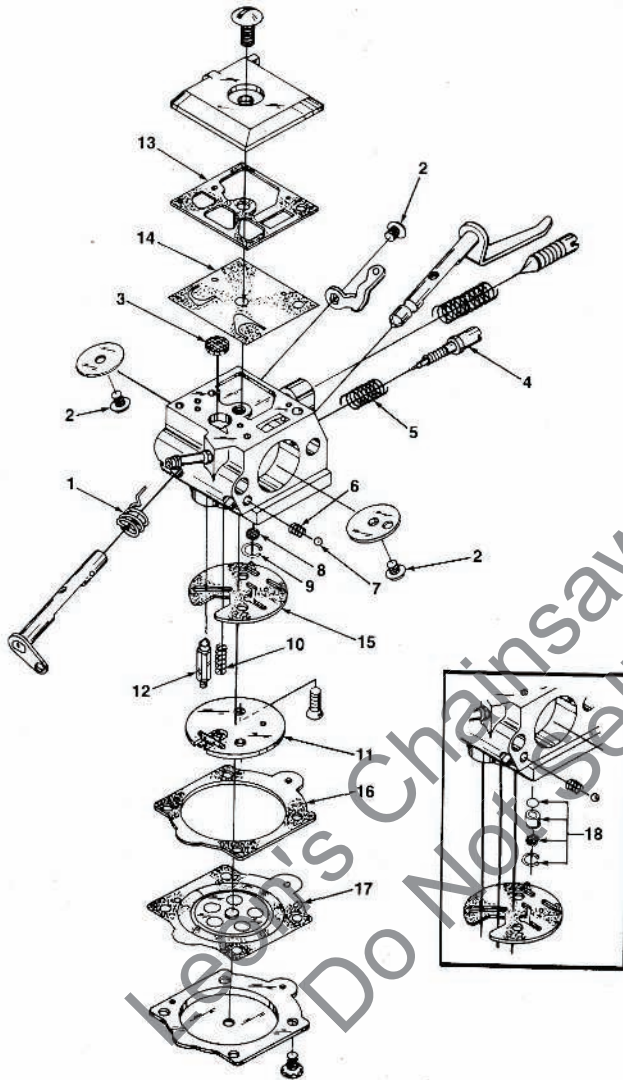
No.	Description	Part No.	Qty.
12	COVER- Oil pump	69224-1C	1
13	SPRING- Oil pump	69447	1
14	GASKET- Oil pump	69244-1	2
15	PLUNGER- Oil pump	A-12356-B	1
16	BODY- Oil pump	69343-1	1
17	BALL- Check valve	60051	1
18	SPRING- Check valve	68570	1
19	FITTING- Oil line	70204	2
20	FITTING- Tube	69833	2
21	LINE- Oil	70161	1
22	BOLT- Guide bar	69195	1
23	SCREW- Sem hex hd. 8-32 x 1	88044	4

A 94649-E

XL-2

**CARBURETOR
A-94053**

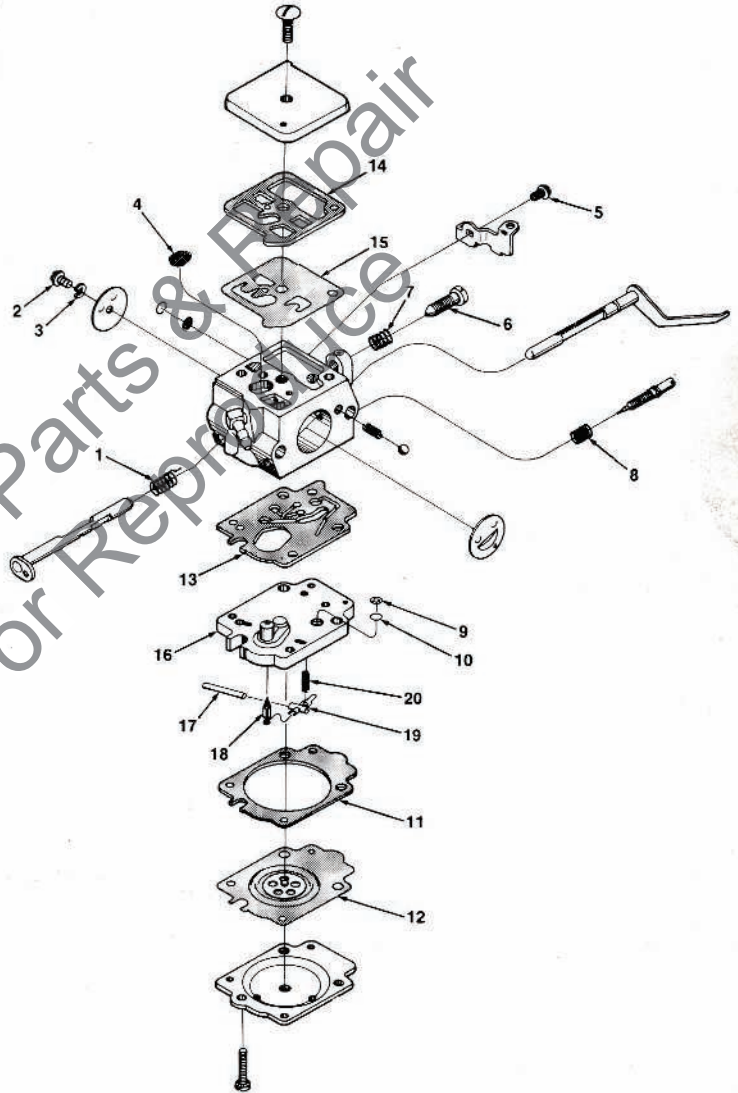
HDC-48A



- 94702 Repair Kit (includes 1-17)
- 70655 GASKET/Diaphragm Set (13-17)
- 93910 Check Valve Repair Kit (18)
- 94057 Circuit Plate-High Altitude .029 (not shown)
- 64229 Inlet Needle (12)

**CARBURETOR
A-70551-A**

HK-27A



- 94810 Repair Kit (includes 1-15)
- 70094 GASKET/Diaphragm Set (includes 11-15)
- 94817 Module (16) (includes 17-20)
- 70589 High Altitude Kit

XL-2

ACCESSORIES

FILTER- Air	A-24779
Includes:	
FILTER- Air (2)	69141
GASKET- Oil pump body (repair)	69596
KIT- Repair (sprocket nose bar) (.025 pitch)	A-69682-A
KIT- Repair (sprocket nose bar) 37 & 375 pitch	A-70239-B
KIT- Spark arrestor (used with A-93686 Muffler and A-69253-1 Muffler)	A-69586-B
LINE- Fuel (10 ft. length)	70310-99
LINE- Oil (10 ft. length)	70309-99
SAFE•T•TIP	A-70776-A
Includes:	
SCREW- (Special)	93695
GREASE- Multi-use	17193
(Sprocket bearing-PT Guide Bar)	
KIT- Hand guard	A-70796-A
Includes:	
WASHER- Belleville (2)	70728
SPACER- (1)	70748
SCREW- 10-32 x 5/8 (1)	80572
SCREW (1)	82312
CARRYING CASE	94215
STARTING ROPE- 250 ft. reel #4	68848

TOOLS

SILASTIC- (Crankcase sealing)	24823
PLIERS- TRU-ARC (Sprocket retaining ring)	17198
PULLER- Magneto rotor	A-24747-A
Includes:	
BOLT- 5/16-18 x 1 3/4 (1)	80288
NUT- Hex 5/16-18 (2)	81196
WRENCH- Hex soc., 5/32 (for 10-24 screws)	22126
WRENCH- Hex soc., 9/64	23528
(for socket head connecting rod screws)	
WRENCH- Spanner (clutch)	A-93791
Includes:	
PIN- Clutch spanner (2)	23717-A
TOOL- Carburetor check valve installation	24972

HOMELITE DIVISION OF TEXTRON INC.

P.O. BOX 7047
14401 CAROWINDS BOULEVARD
CHARLOTTE, N.C. 28217

HOMELITE **TEXTRON**

Homelite Division of Textron Inc.

39711CJZ