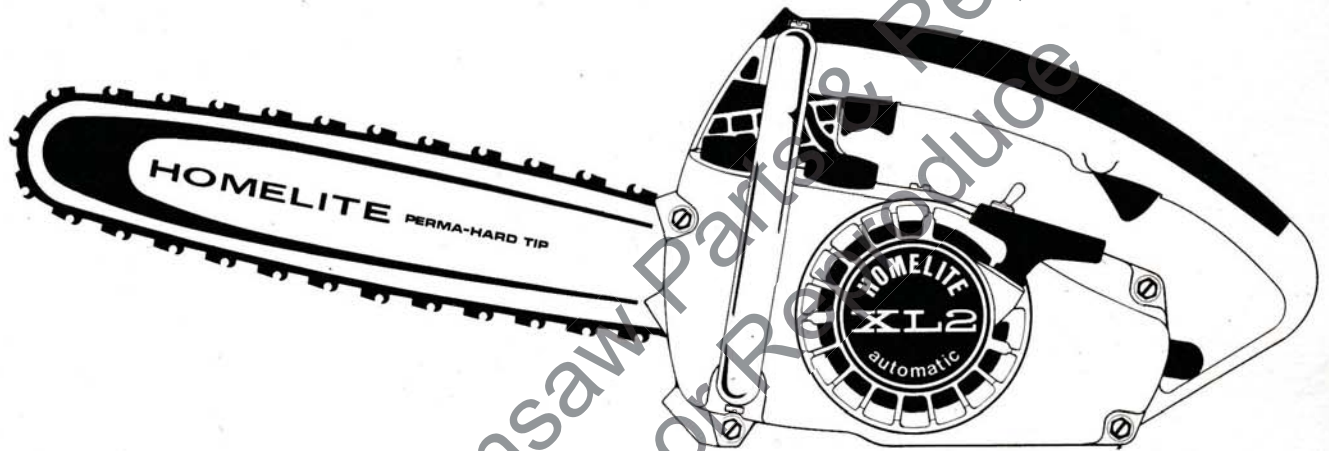


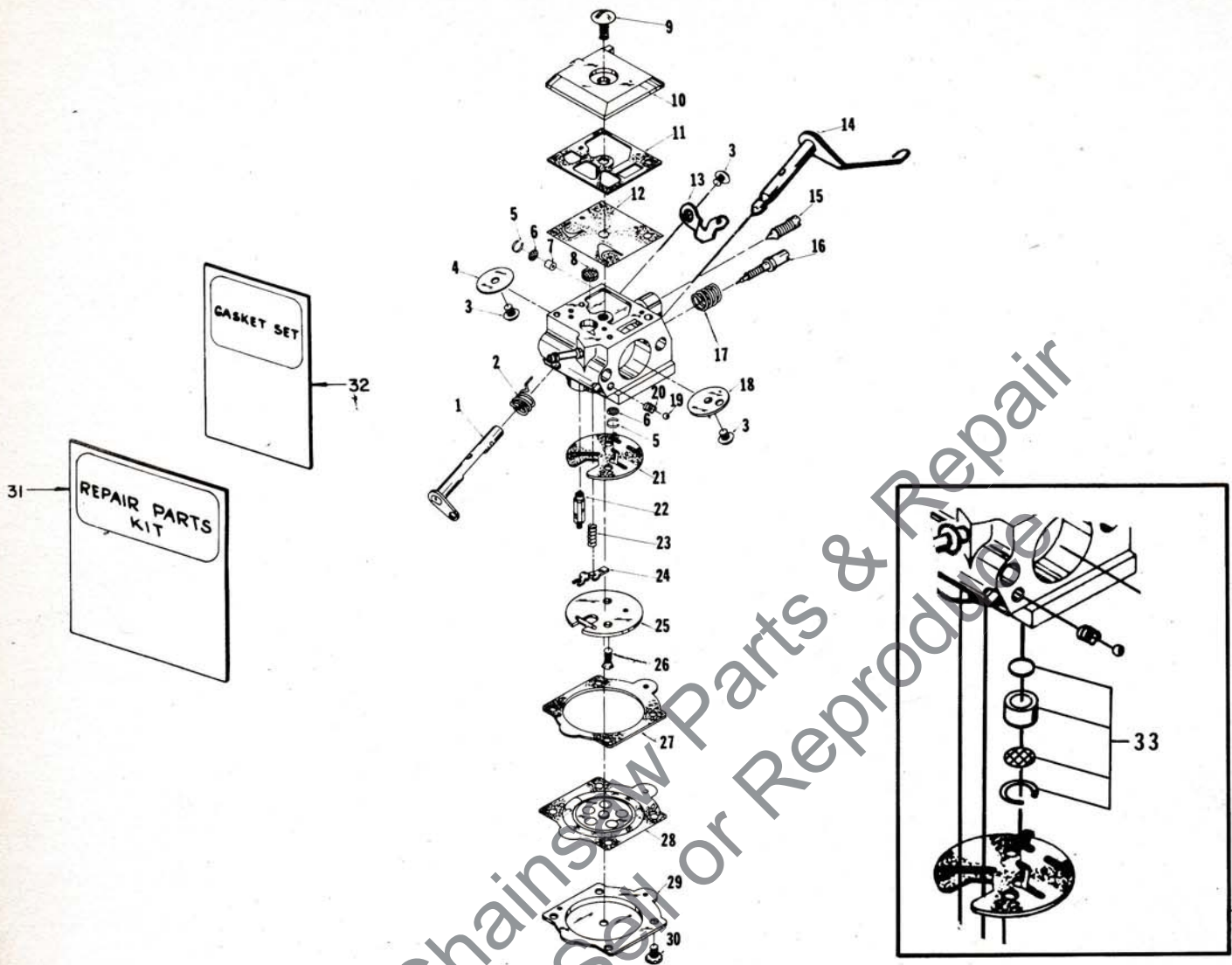
PARTS LIST



HOMELITE®

**XL2
AUTOMATIC
CHAIN
SAW**

XL2 AUTOMATIC



A-69319

HDC-15

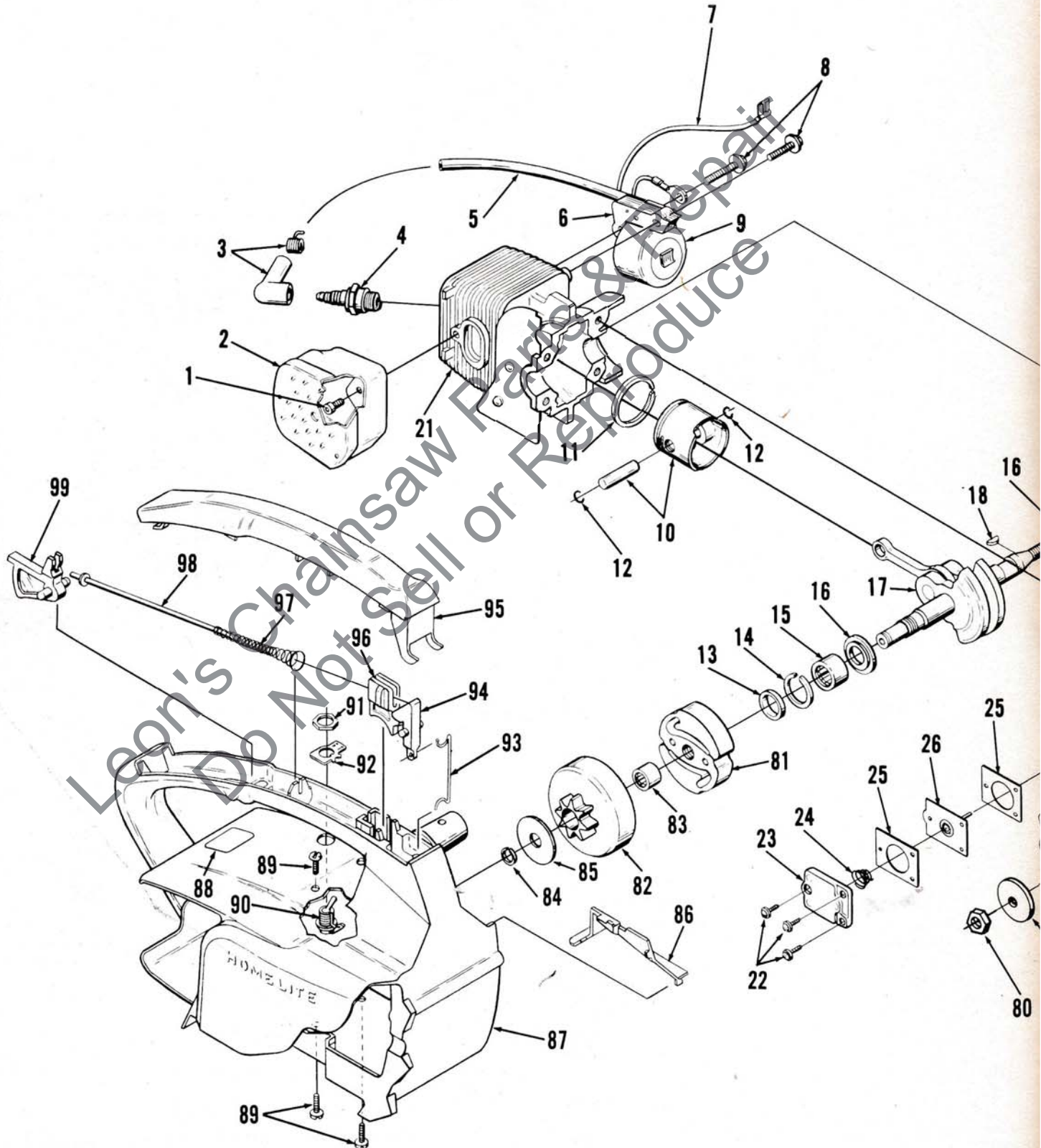
No.	Description	Part No.	Qty.
1	SHAFT-throttle	69252	1
2	SPRING-throttle return	†69430	1
3	SCREW-valve	†67372	3
4	VALVE-throttle	67363	1
5	RING-screen retaining	†67360	2
6	SCREEN-check valve	†67381	2
7	JET-limiting	69432	1
8	SCREEN-fuel inlet	†64243	1
9	SCREW-fuel pump cover	67374	1
10	COVER-fuel pump	67361	1
11	GASKET-fuel pump	†67368	1
12	DIA PHRAGM-fuel pump	†67370	1
13	STOP-throttle	69519	1
14	SHAFT-choke	69251	1
15	NEEDLE-idle adjustment	67373	1
16	NEEDLE-main adjustment	†69431	1
17	SPRING-needle adjusting	†67377	1
18	VALVE-choke	69428	1
<u>Accessories</u>			
	KIT-check valve repair	65386	1
	DRIVER-check valve	24173	1
	PLATE-circuit (high altitude)	A-69588	1

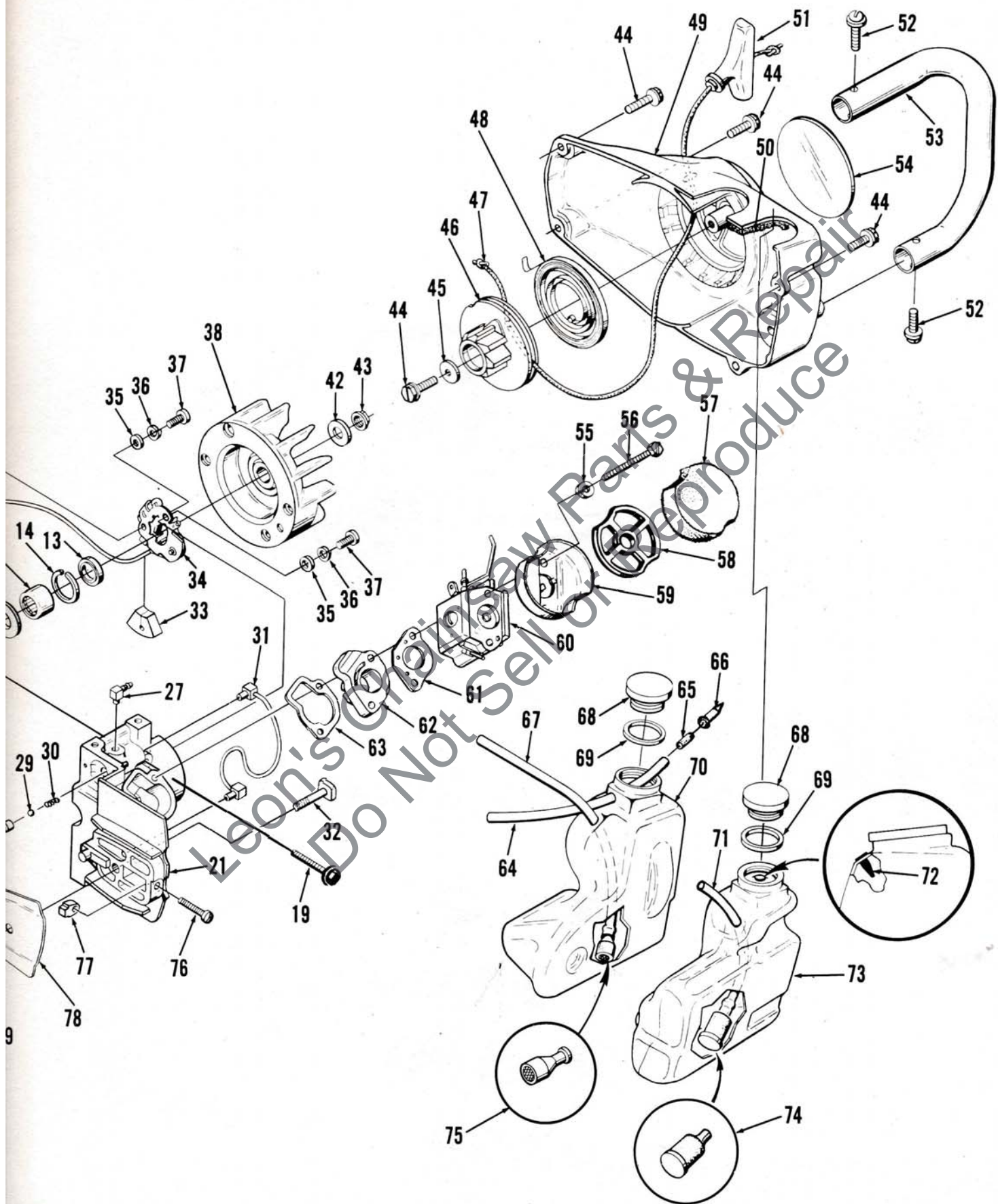
No.	Description	Part No.	Qty.
19	BALL-check valve	†60051	1
20	SPRING-choke friction	†64238	1
21	GASKET-circuit	†67367-A	1
22	NEEDLE-inlet	†64229	1
23	SPRING-metering lever	†67378	1
24	LEVER-metering	†67383	1
25	PLATE-circuit	69433	1
26	SCREW-circuit plate	67375	2
27	GASKET-metering diaphragm	†64231	1
28	DIA PHRAGM-metering	†67371	1
29	COVER-metering diaphragm	64224	1
30	SCREW-metering cover	64689	4
31	REPAIR KIT	69434	1
32	GASKET SET	†67369-A	1
33	KIT-check valve repair (accessory)	65386	1
	Includes: VALVE-check		1
	SEAT-valve		1
	SCREEN-check valve	67381	1
	RING-screen retaining	67360	1

† Indicates contents of Repair Kit #69434

‡ Indicates contents of Gasket Set # 67369-A

XL2 AUTOMATIC





NUMBER WHEN ORDERING PARTS.

XL2 AUTOMATIC

No.	Description	Part No.	Qty.	No.	Description	Part No.	Qty.
1	SCREW-soc. hd., 10-24 x 1/2	82245	1	55	WASHER-lock, #10	83006-1	2
2	MUFFLER	A-69253-1	1	56	SCREW-hex hd., 10-32 x 2-1/4	80481	2
3	TERMINAL-spark plug	A-33055	1	57	FILTER-air	69141	1
4	SPARK PLUG-Champion DJ-7J	68616-S	1	58	RETAINER-filter	69457	1
5	LEAD-high tension	69326	1	59	CUP-filter	69148	1
6	CORE-coil	69324	1	60	CARBURETOR-HDC-15	A-69319	1
7	LEAD-stop switch	69321	1	61	GASKET-carburetor	65016	1
8	SCREW-hex w/washer, 8-32 x 3/4	82248	2	62	MANIFOLD-intake	A-69373	1
9	COIL	69323	1	63	GASKET-intake manifold	69143	1
	RETAINER-coil (not shown)	69325	1	64	LINE-pressure	A-69358	1
*	SHORT BLOCK	A-69394-A	1		Includes:		
	Includes:			65	CONNECTOR-oil line	69659-1	1
10	PISTON & PIN	A-69393	1	66	VALVE-check	69451	1
	Includes:			67	LINE-oil	69345	1
11	PISTON RING	69312	1	68	CAP-tank (fuel & oil)	A-69277-A	2
12	RING-piston pin retaining	65261	2		Includes:		
13	SEAL	68519	2	69	GASKET (see note 1)	69585	1
14	SPACER-seal	69407	2	70	TANK-oil	69280-1	1
15	BEARING-needle	12530	2	71	LINE-fuel	69344	1
	BEARING-roller (optional)	68513	2	72	VALVE-check (fuel tank)	69451	1
16	WASHER-thrust	69093	2	73	TANK-fuel	69281-1	1
17	CRANKSHAFT	A-69132	1	74	FILTER-fuel pick-up (sintered bronze)	69513	1
18	KEY-magneto	69250	1	75	FILTER-oil	A-68593	1
19	SCREW-Sems hex, 8-32 x 1	88021	4	76	SCREW-adjusting fil hd., 8-32 x 7/8	82250	1
*21	CYLINDER & CRANKCASE	A-69421-A	1	77	PIN-adjusting	69254-1A	1
	Includes:			78	PLATE-guide bar	69360	1
22	SCREW-pan hd., 6-32 x 3/8	80571	3	79	WASHER-flat	69309-1	1
*23	COVER-oil pump	69224-1B	1	80	NUT-guide bar	81065-2	1
24	SPRING-oil pump	69447	1	81	CLUTCH-"S"	69070-1	1
25	GASKET-oil pump	69244	2	82	DRUM & SPROCKET-.250 pitch, 9 tooth	A-69587	1
26	PLUNGER-oil pump	A-69242	1		Includes:		
27	FITTING-oil line	69295	1	83	BEARING-needle	69318-1	1
28	BODY-oil pump	69343	1	84	RING-retaining (clutch)	69743	1
29	BALL-check valve	60051	1	85	WASHER-thrust (clutch)	69138	1
30	SPRING-check valve	68570	1	86	COVER-air filter	69263	1
31	LINE-oil	A-69314	1	*87	HOUSING-engine	A-69882	1
32	BOLT-guide bar	69195	1	*88	Includes: DECAL-instructions	69347-1A	1
33	SEAL-lead	69247	1	89	SCREW-pan hd., 10-24 x 1/2	82216	4
34	POINT SET-breaker	A-69336	1	90	SWITCH-stop (grounding)	A-69398	1
35	WASHER-flat	84025-1	2		Includes:		
36	WASHER-lock	83060	3	91	NUT-hex	72084-A1	1
37	SCREW-point set	82241	2	92	PLATE-"On-Off"	63910	1
*38	ROTOR and STARTER PAWL	A-69297-A	1	93	ROD-throttle (front)	69255-A	1
42	WASHER-flat	69145	1	94	LEVER-throttle	69107	1
43	NUT-rotor, 5/16-24	81229	1	95	COVER-handle	69140-A	1
44	SCREW-hex washer hd., 10-32 x 5/8	80704	5	96	TRIGGER-front	69105	1
45	WASHER-flat	69144	1	97	SPRING-throttle rod	69249	1
46	PULLEY-starter	69153	1	98	ROD-throttle	A-69136	1
47	ROPE-starter #4, 30" long	69311	1	*99	TRIGGER-rear	69106-A	1
48	SPRING-rewind	69217	1				
49	HOUSING-rewind starter	A-69540	1				
	Includes:						
50	FILTER-fuel tank valve	69443	1				
51	GRIP-starter rope	69157	1				
52	SCREW-pan washer hd., 10-32 x 5/8	80572	2				
53	HANDLE BAR	69133-1	1				
54	DECAL	69346	1				

Tools

PULLER-rotor	A-24747-A
Includes:	
BOLT-5/16-18 x 1-3/4 (1)	80288
NUT-hex, 5/16-18 (2)	81196
WRENCH-flat (for guide bar nut)	24814
WRENCH-hex soc., 5/32 (for 10-24 screws)	22126
WRENCH-hex soc., 9/64 (for 8-32 screws)	23528
WRENCH-socket (double end)	68651
WRENCH-spanner (clutch)	A-23696-A
Includes:	
PIN-clutch spanner (2)	23717-A

Accessories

FILTER-air	A-24779
Includes:	
FILTER-air (2)	69141
GASKET-oil pump body	69596
KIT-repair, sprocket nose bar	A-69682
Includes:	
BEARING-roller (21)	68236
KIT-spark arrestor	A-69586
Includes:	
SCREW-self-tapping, #6 x 1/4 (3)	80328
LINE-fuel (10 ft. length)	69656
LINE-oil (10 ft. length)	69657
REEL-250' (starting rope) #4	68848

Paint

SPRAY CAN-black	22772
SPRAY CAN-red	23475

* Denotes new parts

XL2 AUTOMATIC

Part No.	Description	Qty.	Part No.	Description	Qty.	Part No.	Description	Qty.
12530	Bearing-needle	2	69105	Trigger-front	1	69358	Line-pressure	1
22126	Wrench-hex soc.	1	*69106-A	Trigger-rear	1	69360	Plate-guide bar	1
22772	Paint-black	1	69107	Lever-throttle	1	A-69373	Manifold-intake	1
23475	Paint-red	1	A-69132	Crankshaft	1	A-69393	Piston & Pin	1
23528	Wrench-hex soc.	1	69133-1	Handle Bar	1	*A-69394-A	Short Block	1
A-23696-A	Wrench-spanner	1	A-69136	Rod-throttle	1	69407	Spacer-seal	2
23717-A	Pin-clutch	2	69138	Washer-thrust	1	*A-69421-A	Cyl. & Crankcase	1
24173	Driver-check valve	1	69140-A	Cover-handle	1	69428	Valve-choke	1
A-24747-A	Pulley-rotor	1	69141	Filter-air	3	69430	Spring-throttle	1
A-24779	Filter-air	1	69143	Gasket-intake	1	69431	Needle-main	1
24814	Wrench-flat	1	69144	Washer-flat	1	69432	Jet-limiting	1
A-33055	Terminal	1	69145	Washer-flat	1	69433	Plate-circuit	1
60051	Ball-check valve	2	69148	Cup-filter	1	69434	Repair Kit	1
63910	Plate-on-off	1	69157	Grip-starter rope	1	69443	Filter-fuel tank	1
A-63938	Switch-stop	1	69158	Pulley-starter	1	69447	Spring-oil pump	1
64224	Cover-metering	1	69195	Bolt-guide bar	1	69451	Valve-check	2
64229	Needle-inlet	1	69217	Spring-rewind	1	69457	Retainer-filter	1
64231	Gasket-metering	1	*69224-1B	Cover-oil pump	1	69513	Filter-fuel pick up	1
64238	Spring-choke	1	A-69242	Plunger-oil pump	1	69519	Stop-throttle	1
64243	Screen-fuel inlet	1	69244	Gasket-oil pump	2	A-69540	Housing-rewind	1
64689	Screw-metering	4	69247	Seal-lead	1	69585	Gasket	1
65016	Gasket-carb.	1	69249	Spring-throttle rod	1	A-69586	Kit-spark arrestor	1
65261	Ring-piston pin	2	69250	Key-magneto	1	A-69587	Drum & Sprocket	1
65386	Repair Kit	1	69251	Shaft-choke	1	A-69588	Plate-circuit	1
67360	Ring-screen	2	69252	Shaft-throttle	1	69596	Gasket-oil pump	1
67361	Cover-fuel pump	1	A-69253-1	Muffler	1	69656	Line-fuel	1
67363	Valve-throttle	1	69254-1A	Pin-adjusting	1	69657	Line-oil	1
67367-A	Gasket-circuit	1	69255-A	Throttle	1	69659-1	Connector-oil line	1
67368	Gasket-fuel pump	1	69263	Cover-air filter	1	A-69682	Kit-repair	1
67369-A	Gasket-set	1	A-69277-A	Cap-tank	2	69743	Ring-retaining	1
67370	Diaphragm-fuel	1	69280-1	Tank-oil	1	*A-69882	Housing-engine	1
67371	Diaphragm	1	69281-1	Tank-fuel	1	72084-A1	Nut-hex	1
67372	Screw-valve	3	69295	Fitting-oil line	1	FASTENING PARTS		
67373	Needle-idle	1	*A-69297-A	Rotor & Starter	1	64021	8-32 x 3/4	2
67374	Screw-fuel pump	1	69309-1	Washer-flat	1	80288	5/16-18 x 1-3/4	1
67375	Screw-circuit	2	69311	Rope-starter	1	80328	6 x 1/4	3
67377	Spring-needle	1	69312	Piston Ring	1	80481	10-32 x 2-1/4	2
67378	Spring-metering	1	A-69314	Line-oil	1	80571	6-32 x 3/8	3
67381	Screen-check	2	69318-1	Bearing-needle	1	80572	10-32 x 5/8	2
67383	Lever-metering	1	A-69319	Carburetor	1	80704	10-32 x 5/8	5
68236	Bearing-roller	21	69321	Lead-stop switch	1	81065-2	Nut-guide bar	1
68513	Bearing-roller	2	69323	Coil	1	81196	Nut-5/16-18	2
68519	Seal	2	69324	Core-coil	1	81229	Nut-5/16-24	1
68570	Spring-check	1	69325	Retainer-coil	1	82216	10-24 x 1/2	4
A-68593	Filter-oil	1	69326	Lead-high	1	82241	Screw	2
68616-S	Spark Plug-DJ-7J	1	A-69336	Point-Set-breaker	1	82245	10-24 x 1/2	1
68651	Wrench-socket	1	69343	Body-oil pump	1	82248	8-32 x 3/4	2
68848	Reel-starting rope	1	69344	Line-fuel	1	82250	8-32 x 7/8	1
69070-1	Clutch "S"	1	69345	Line-oil	1	83006-1	Washer-#10	2
69093	Washer-thrust	2	69346	Decal	1	83060	Washer-lock	2
			*69347-1A	Decal-instructions	1	84025-1	Washer-flat	2
						88021	8-32 x 1	4

* Denotes new parts

HOMELITE®

A Textron
DIVISION

PORT CHESTER, NEW YORK, U.S.A. 10573

E 3476 x z