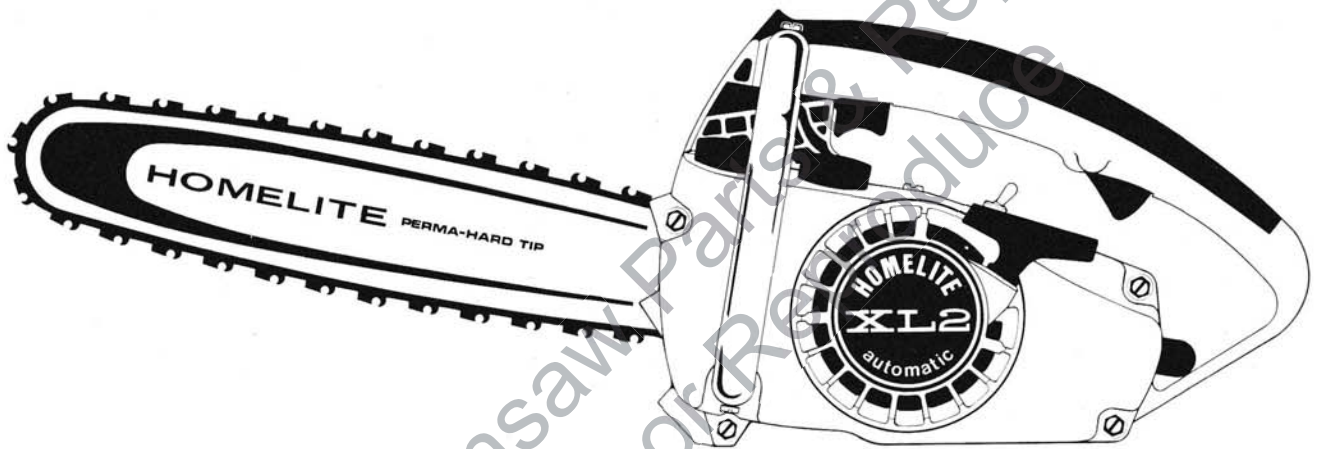


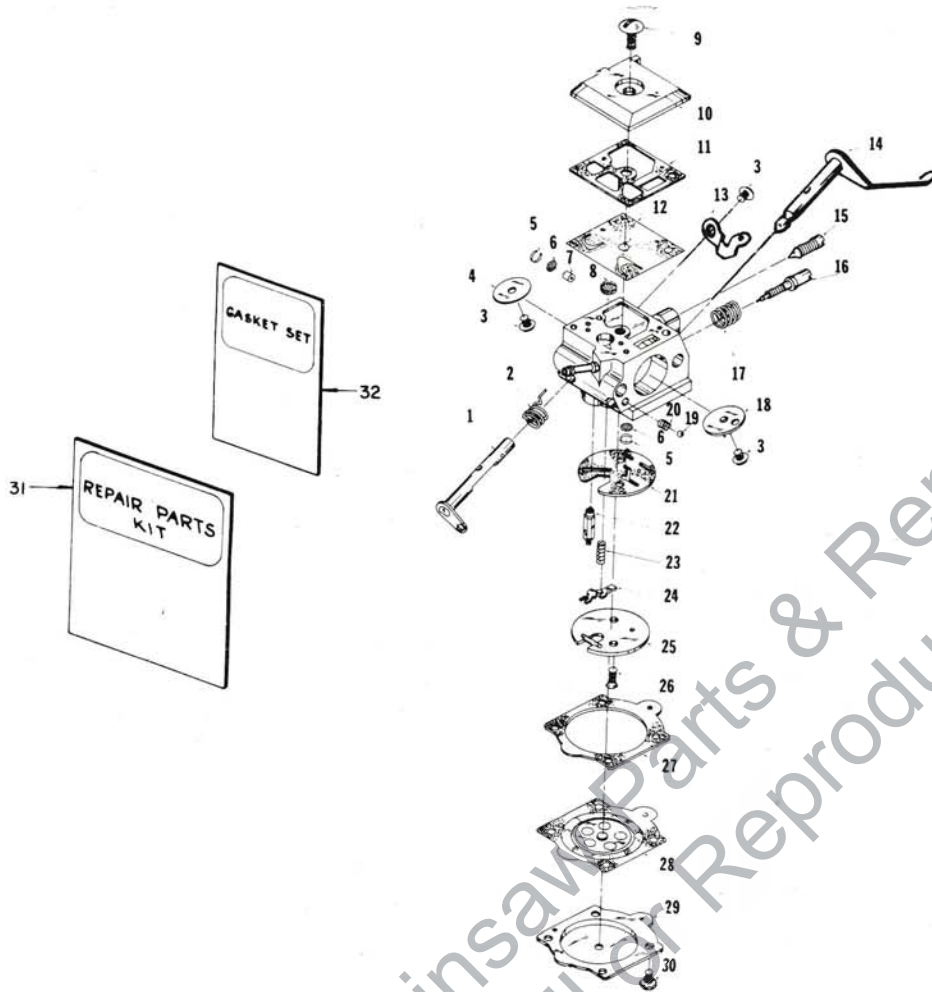
PARTS LIST



HOMELITE[®]

**XL2
AUTOMATIC
CHAIN
SAW**

XL2 AUTOMATIC



A-69319 HDC-15

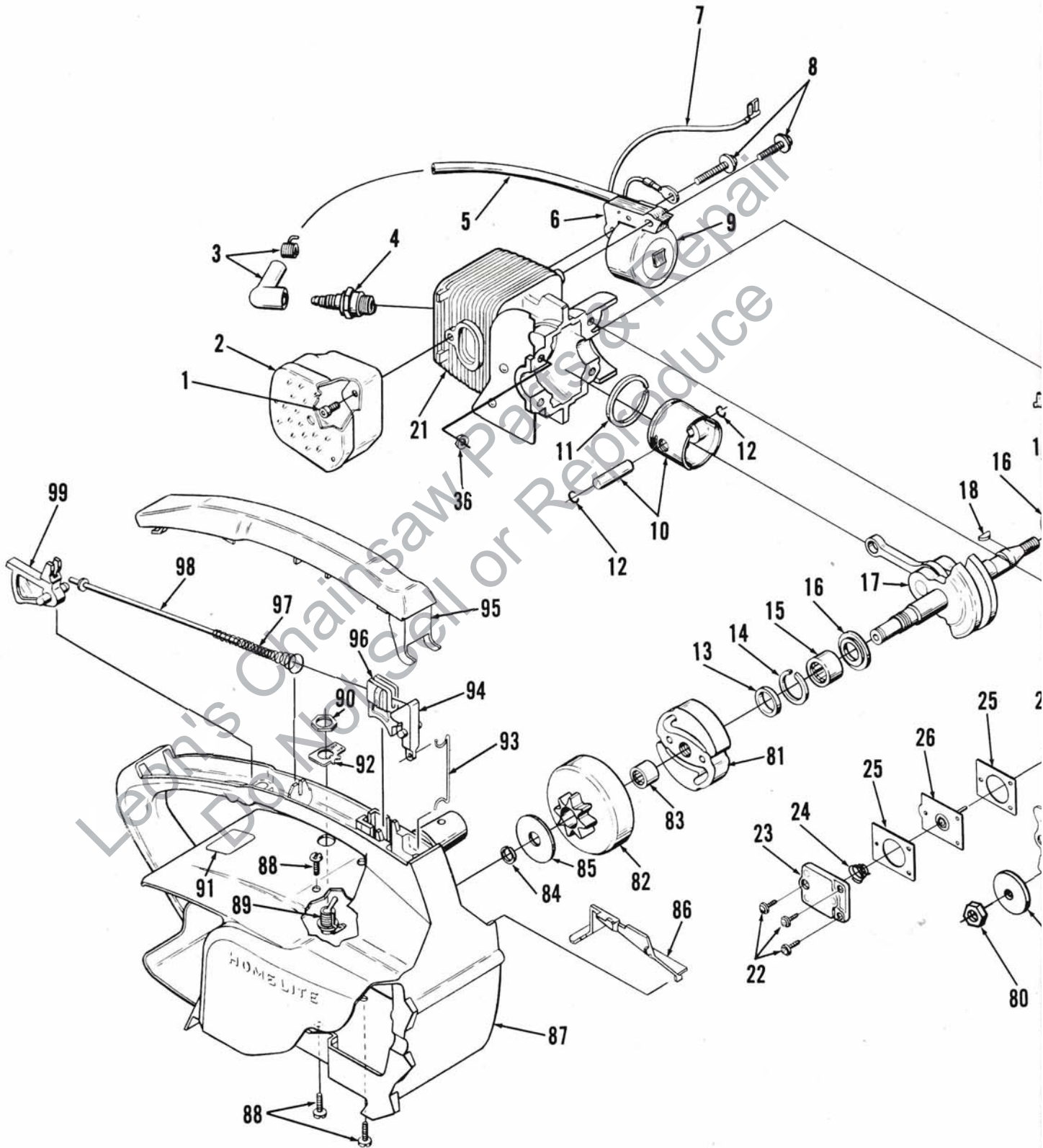
No.	Description	Part No.	Qty.	No.	Description	Part No.	Qty.
1	SHAFT-throttle	69252	1	19	BALL-check valve	†60051	1
2	SPRING-throttle return	†69430	1	20	SPRING-choke friction	†64238	1
3	SCREW-valve	†67372	3	21	GASKET-circuit	‡67367	1
4	VALVE-throttle	67363	1	22	NEEDLE-inlet	†64229	1
5	RING-screen retaining	†67360	2	23	SPRING-metering lever	†67378	1
6	SCREEN-check valve	†67381	2	24	LEVER-metering	†67383	1
7	JET-limiting	69432	1	25	PLATE-circuit	69433	1
8	SCREEN-fuel inlet	†64243	1	26	SCREW-circuit plate	67375	2
9	SCREW-fuel pump cover	67374	1	27	GASKET-metering diaphragm	‡64231	1
10	COVER-fuel pump	67361	1	28	DIAPHRAGM-metering	†67371	1
11	GASKET-fuel pump	‡67368	1	29	COVER-metering diaphragm	64224	1
12	DIAPHRAGM-fuel pump	†67370	1	30	SCREW-metering cover	64689	4
13	STOP-throttle	69519	1	31	REPAIR KIT	69434	1
14	SHAFT-choke	69251	1	32	GASKET SET	†67369	1
15	NEEDLE-idle adjustment	67373	1		<u>Accessories</u>		
16	NEEDLE-main adjustment	†69431	1		KIT-check valve repair	65386	1
17	SPRING-needle adjusting	†67377	1		DRIVER-check valve	24173	1
18	VALVE-choke	69428	1	*	PLATE-circuit (high altitude)	A-69588	1

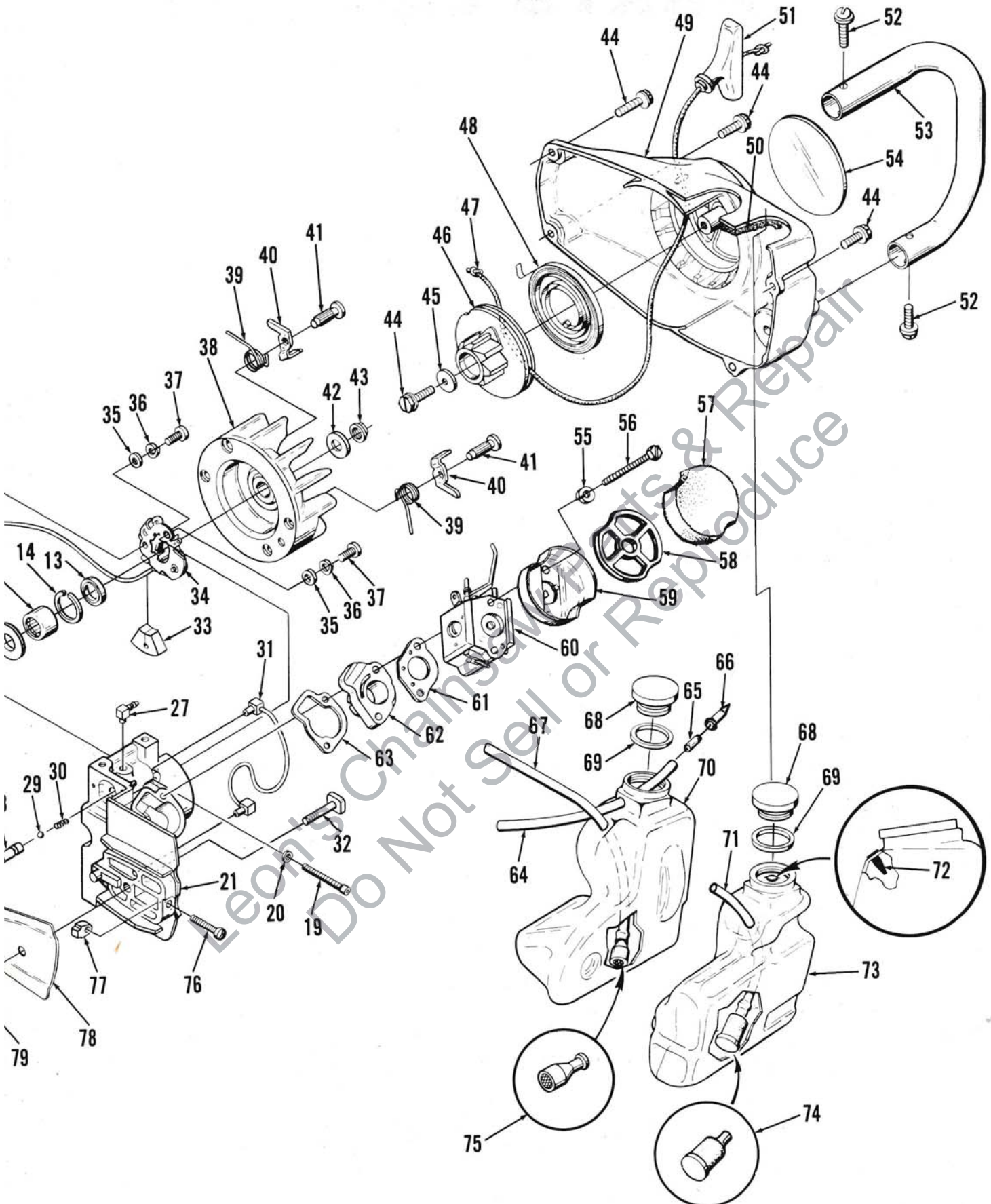
† Indicates contents of Repair Kit #69434

‡ Indicates contents of Gasket Set #67369

* Denotes new parts

XL2 AUTOMATIC





NUMBER WHEN ORDERING PARTS.

XL2 AUTOMATIC

No.	Description	Part No.	Qty.	No.	Description	Part No.	Qty.
1	SCREW-soc. hd., 10-24 x 1/2	82245	1	55	WASHER-lock, #10	83006-1	2
2	MUFFLER	A-69253-1	1	56	SCREW-hex hd., 10-32 x 2-1/4	80481	2
3	TERMINAL-spark plug	A-33055	1	57	FILTER-air	69141	1
4	SPARK PLUG-Champion DJ-7J	68616-S	1	58	RETAINER-filter	69457	1
5	LEAD-high tension	69326	1	59	CUP-filter	69148	1
6	CORE-coil	69324	1	60	CARBURETOR-HDC-15	A-69319	1
7	LEAD-stop switch	69321	1	61	GASKET-carburetor	65016	1
8	SCREW-fil. w/washer, 8-32 x 3/4	64021	2	62	MANIFOLD-intake	A-69373	1
9	COIL	69323	1	63	GASKET-intake manifold	69143	1
	RETAINER-coil (not shown)	69325	1	*64	LINE-pressure	A-69358	1
	SHORT BLOCK	A-69394	1		Includes:		
	Includes:			*65	CONNECTOR-oil line	69659-1	1
10	PISTON & PIN	A-69393	1	*66	VALVE-check	69451	1
	Includes:			67	LINE-oil	69345	1
11	PISTON RING	69312	1	*68	CAP-tank (fuel & oil)	A-69277-A	2
12	RING-piston pin retaining	65261	2		Includes:		
13	SEAL	68519	2	*69	GASKET (see note 1)	69585	1
14	SPACER-seal	69407	2	*70	TANK-oil	69280-1	1
15	BEARING-needle	12530	2	71	LINE-fuel	69344	1
	BEARING-roller (optional)	68513	2	*72	VALVE-check (fuel tank)	69451	1
16	WASHER-thrust	69093	2	*73	TANK-fuel	69281-1	1
17	CRANKSHAFT	A-69132	1	74	FILTER-fuel pick-up (sintered bronze)	69513	1
18	KEY-magneto	69250	1	75	FILTER-oil	A-68593	1
19	SCREW-soc. cap, 8-32 x 1-1/8	82244	4	76	SCREW-adjusting fil hd., 8-32 x 7/8	82250	1
20	WASHER-#8 flat	84101	3	*77	PIN-adjusting	69254-1A	1
21	CYLINDER & CRANKCASE	A-69421	1	*78	PLATE-guide bar	69360	1
	Includes:			*79	WASHER-flat	69309-1	1
22	SCREW-pan hd., 6-32 x 3/8	80571	3	80	NUT-guide bar	81065-2	1
23	COVER-oil pump	69224-1	1	81	CLUTCH-"S"	69070-1	1
24	SPRING-oil pump	69447	1	*82	DRUM & SPROCKET-.250 pitch, 9 tooth	A-69587	1
25	GASKET-oil pump	69244	2		Includes:		
26	PLUNGER-oil pump	A-69242	1	*83	BEARING-needle	69318-1	1
27	FITTING-oil line	69295	1	*84	RING-retaining (clutch)	69743	1
*28	BODY-oil pump	69343	1	85	WASHER-thrust (clutch)	69138	1
29	BALL-check valve	60051	1	86	COVER-air filter	69263	1
30	SPRING-check valve	68570	1	87	HOUSING-engine	68925-2	1
31	LINE-oil	A-69314	1	88	SCREW-pan hd., 10-24 x 1/2	82216	4
32	BOLT-guide bar	69195	1	89	SWITCH-stop (grounding)	A-69398	1
33	SEAL-lead	69247	1		Includes:		
34	POINT SET-breaker	A-69336	1	90	NUT-hex	72084-A1	1
35	WASHER-flat	84025-1	2	91	DECAL-instructions	69347-1	1
36	WASHER-lock	83060	3	92	PLATE-"On-Off"	63910	1
37	SCREW-point set	82241	2	*93	ROD-throttle (front)	69255-A	1
38	ROTOR-magneto	69282	1	94	LEVER-throttle	69107	1
39	SPRING-starter pawl	69139	2	*95	COVER-handle	69140-A	1
40	PAWL-starter	69095	2	96	TRIGGER-front	69105	1
41	PIN-starter pawl	69137	2	97	SPRING-throttle rod	69249	1
42	WASHER-flat	69145	1	98	ROD-throttle	A-69136	1
43	NUT-rotor, 5/16-24	81229	1	99	TRIGGER-rear	69106	1
44	SCREW-hex washer hd., 10-32 x 5/8	80704	5				
45	WASHER-flat	69144	1				
46	PULLEY-starter	69158	1				
47	ROPE-starter #4, 30" long	69311	1				
48	SPRING-rewind	69217	1				
49	HOUSING-rewind starter	A-69540	1				
	Includes:						
50	FILTER-fuel tank valve	69443	1				
51	GRIP-starter rope	69157	1				
52	SCREW-pan washer hd., 10-32 x 5/8	80572	2				
53	HANDLE BAR	69133-1	1				
54	DECAL	69346	1				

Note 1: Units below s/n 22906543 using cap fuel & oil #A-69277 must use 65133 "O" Ring.

Tools

PULLER-rotor	*A-24747-A
Includes:	
BOLT-5/16-18 x 1-3/4 (1)	80288
NUT-hex, 5/16-18 (2)	81196
WRENCH-flat (for guide bar nut)	24814
WRENCH-hex soc., 5/32 (for 10-24 screws)	22126
WRENCH-hex soc., 9/64 (for 8-32 screws)	23528
WRENCH-socket (double end)	68651
WRENCH-spanner (clutch)	A-23696-A
Includes:	
PIN-clutch spanner (2)	23717-A

Accessories

FILTER-air	*A-24779
Includes:	
FILTER-air (2)	69141
GASKET-oil pump body	69596
KIT-repair, sprocket nose bar	*A-69682
Includes:	
BEARING-roller (21)	68236
KIT-spark arrestor	*A-69586
Includes:	
SCREW-self-tapping, #6 x 1/4 (3)	80328
LINE-fuel (10 ft. length)	69656
LINE-oil (10 ft. length)	69657
REEL-250' (starting rope) #4	68848

Paint

SPRAY CAN-black	22772
SPRAY CAN-red	23475

* Denotes new parts

XL2 AUTOMATIC

Part No.	Description	Qty.	Part No.	Description	Qty.	Part No.	Description	Qty.
12530	Bearing-needle	2	69105	Trigger-front	1	69347-1	Decal-instruction	1
22126	Wrench-hex socket	1	69106	Trigger-rear	1	*69358	Line-pressure	1
22772	Spray Can-black	1	69107	Lever-throttle	1	*69360	Plate-guide bar	1
23475	Spray Can-red	1	A-69132	Crankshaft	1	A-69373	Manifold-intake	1
23528	Wrench-hex socket	1	69133-1	Handle Bar	1	A-69393	Piston & Pin	1
A-23696-A	Wrench-spanner (clutch)	1	A-69136	Rod-throttle	1	A-69394	Short Block	1
23717-A	Pin-clutch spanner	2	69137	Pin-starter pawl	2	69407	Spacer-seal	2
24173	Driver-check valve	1	69138	Washer-thrust (clutch)	1	A-69421	Cylinder & Crankcase	1
*A-24747-A	Puller-rotor	1	69139	Spring-starter pawl	2	69428	Valve-choke	1
*A-24779	Filter-air	1	*69140-A	Cover-handle	1	69430	Spring-throttle return	1
A-33055	Terminal-spark plug	1	69141	Filter-air	3	69431	Needle-main adjustment	1
60051	Ball-check valve	2	69143	Gasket-intake manifold	1	69432	Jet-limiting	1
63910	Plate-"On-Off"	1	69144	Washer-flat	1	69433	Plate-circuit	1
A-63938	Switch-stop (grounding)	1	69145	Washer-flat	1	69434	Repair Kit	1
64021	Screw-fil hd. w/flat washer	2	69148	Cup-filter	1	69443	Filter-fuel tank valve	1
64224	Cover-metering diaphragm	1	69157	Grip-starter rope	1	69447	Spring-oil pump	1
64229	Needle-inlet	1	69158	Pulley-starter	1	*69451	Valve-check	2
64231	Gasket-metering diaphragm	1	69195	Bolt-guide bar	1	69457	Retainer-filter	1
64238	Spring-choke friction	1	69217	Spring-rewind	1	69513	Filter-fuel pick up	1
64243	Screen-fuel inlet	1	69224	Cover-oil pump	1	69519	Stop-throttle	1
64689	Screw-metering cover	4	A-69242	Plunger-oil pump	1	A-69540	Housing-rewind starter	1
65016	Gasket-carburetor	1	69244	Gasket-oil pump	2	*69585	Gasket-(see note 1)	1
65261	Ring-piston pin retaining	2	69247	Seal-lead	1	*A-69586	Kit-spark arrestor	1
65386	Repair Kit-check valve	1	69249	Spring-throttle rod	1	*A-69587	Drum & Sprocket	1
67360	Ring-screen retaining	2	69250	Key-magneto	1	*69588	Plate-circuit	1
67361	Cover-fuel pump	1	69251	Shaft-choke	1	69596	Gasket-oil pump body	1
67363	Valve-throttle	1	69252	Shaft-throttle	1	69656	Line-fuel	1
67367	Gasket-circuit	1	A-69253-1	Muffler	1	69657	Line-oil	1
67368	Gasket-fuel pump	1	*69254-1A	Pin-adjusting	1	*69659-1	Connector-oil line	1
67369	Gasket Set	1	*69255-A	Throttle (front)	1	*A-69682	Repair Kit-sprocket nose	1
67370	Diaphragm-fuel pump	1	69263	Cover-air filter	1	*69743	Ring-retaining	1
67371	Diaphragm-metering	1	*A-69277-A	Cap-tank (fuel & oil)	2	72084-A1	Nut-hex	1
67372	Screw-valve	3	*69280-1	Tank-oil	1	FASTENING PARTS		
67373	Needle-idle adjustment	1	*69281-1	Tank-fuel	1	80288	Bolt-5/16-18 x 1-3/4	1
67374	Screw-fuel pump cover	1	69282	Rotor-magneto	1	80328	Screw-6 x 1/4	3
67375	Screw-circuit plate	2	69285	Fitting-oil line	1	80481	10-32 x 2-1/4	2
67377	Spring-needle adjusting	1	*69309-1	Washer-flat	1	80571	6-32 x 3/8	3
67378	Spring-metering lever	1	69311	Rope-starter	1	80572	10-32 x 5/8	2
67381	Screen-check valve	2	69312	Piston Ring	1	80704	10-32 x 5/8	5
67383	Lever-metering	1	A-69314	Line-oil	1	81065-2	Nut-guide bar	1
68236	Bearing-roller	21	*69318-1	Bearing-needle	1	81196	Nut-5/16-18	2
68513	Bearing-roller (optional)	2	A-69319	Carburetor-HDC-15	1	81229	Nut-5/16-24	1
68519	Seal	2	69321	Lead-stop switch	1	82241	Screw-point set	2
68570	Spring-check valve	1	69323	Coil	1	82244	8-32 x 1-1/8	4
A-68593	Filter-oil	1	69324	Core-coil	1	82245	10-24 x 1/2	1
68616-S	Spark Plug-Champion	1	69325	Retainer-coil (not shown)	1	82250	8-32 x 7/8	1
68651	Wrench-socket	1	69326	Lead-high tension	1	82216	10-24 x 1/2	4
68848	Reel-250' starting rope	1	A-69336	Point Set-breaker	1	83006-1	Washer-lock #10	2
68925-2	Housing-engine	1	*69343	Body-oil pump	1	83060	Washer-lock	3
69070-1	Clutch-"S"	1	69344	Line-fuel	1	84025-1	Washer-flat	2
69093	Washer-thrust	2	69345	Line-oil	1	84101	Washer-flat #8	3
69095	Pawl-starter	2	69346	Decal	1		* Denotes new parts	

HOMELITE®

a **Textron**
DIVISION

PORT CHESTER, NEW YORK, U.S.A. 10573