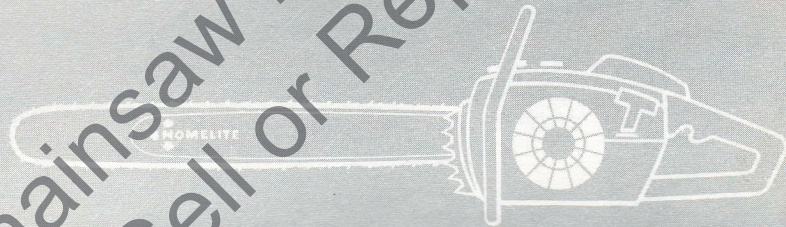


PRICE .25

XL-12
XL-15
SUPER
XL-12

**PARTS
LIST**



HOMELITE

XL

CHAIN SAWS

Leon's Chainsaw Parts & Service
Do Not Call or Reproduce

HOMELITE XL CHAIN SAWS

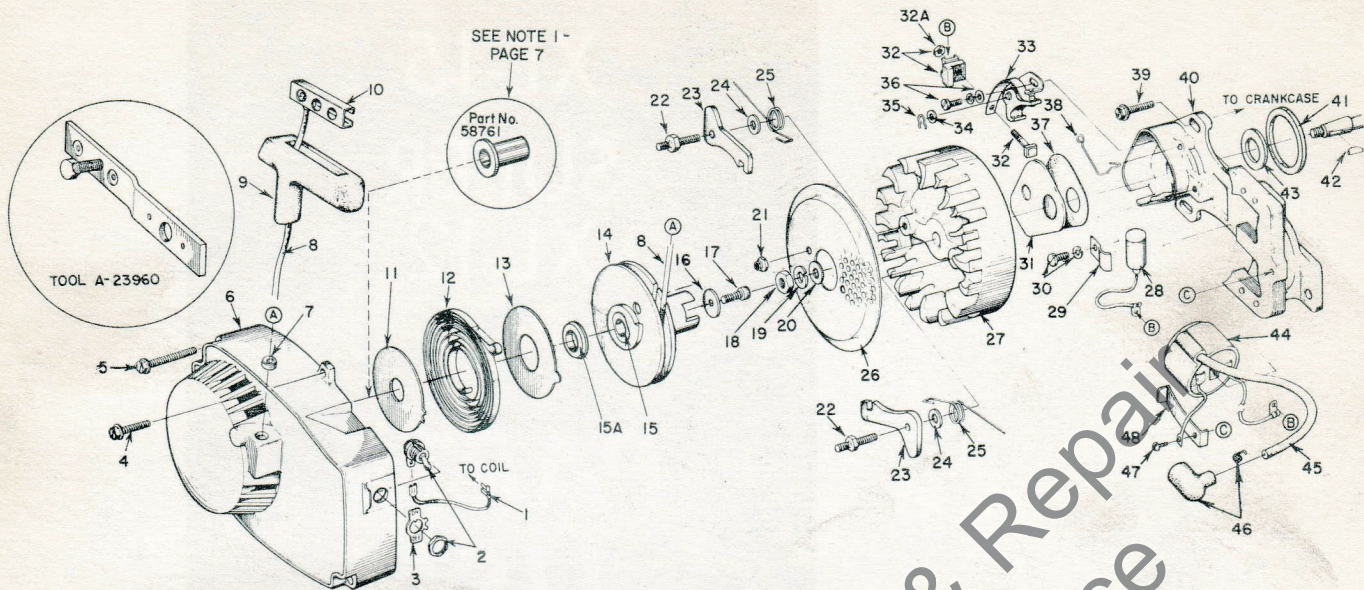


FIGURE 1

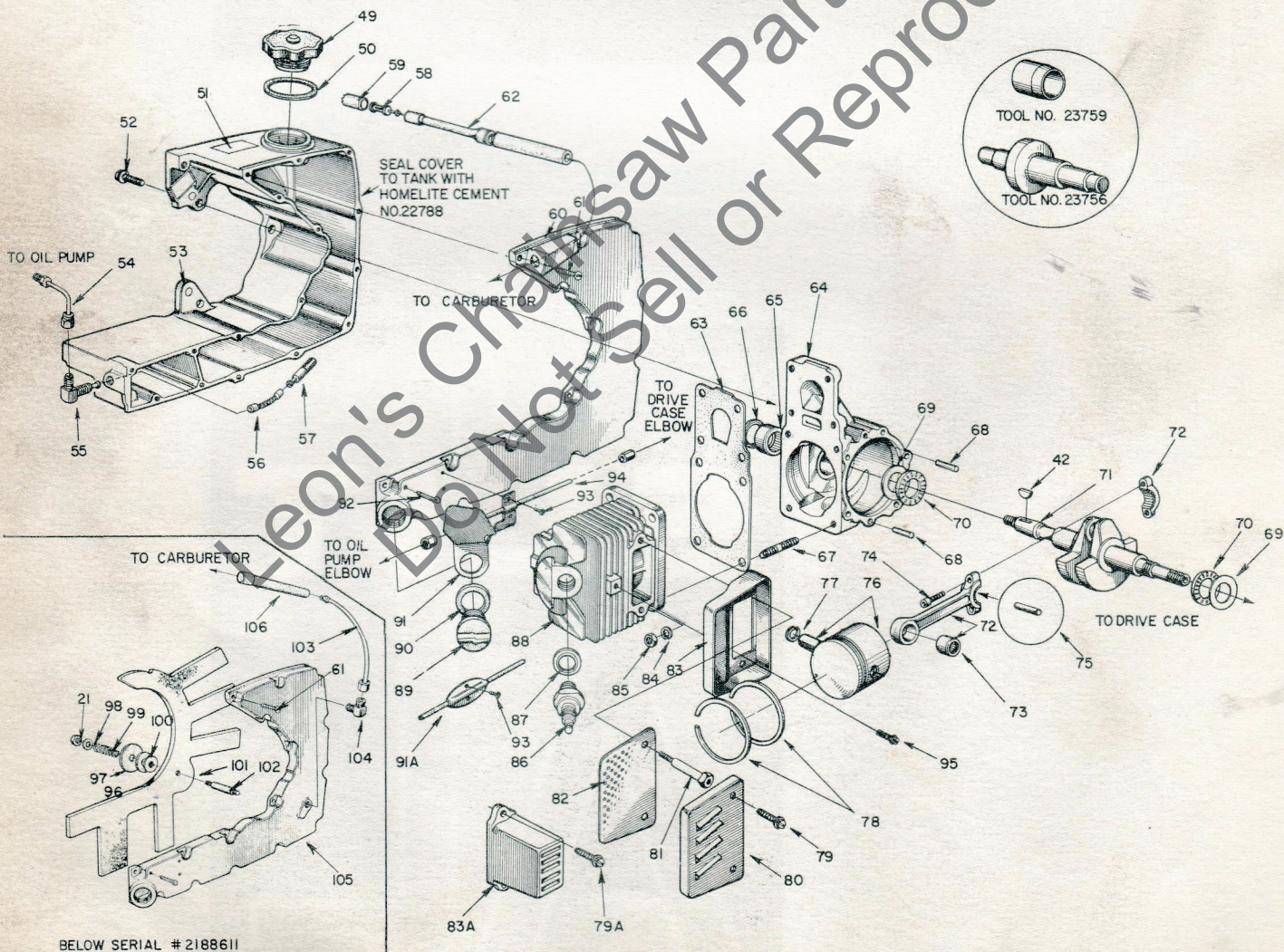


FIGURE 2

ALWAYS FURNISH MODEL AND SERIAL NUMBER WHEN ORDERING PARTS.

HOMELITE XL CHAIN SAWS

Parts used in each model are indicated by an asterisk (*) in the corresponding model column; a dagger (†) indicates an optional part available from your dealer.

Refer to NOTES, circled numerals, on page 7.

No.	Description	Part No.	XL 12	Super XL 12	XL 15	Qty.
1	LEAD - ground w/term.	A-59031	*	*	*	1
2	SWITCH - w/nut	A-57650-3	*	*	*	1
3	PLATE - "ON" - "OFF"	72085-A	*	*	*	1
4	SCREW - hex, 12-24 x 5/8	80676	*	*	*	1
5	SCREW - hex, 12-24 x 1 11/16	58963	*	*	*	3
6	HOUSING - fan	A-59562	*	*	*	1
7	Includes: BUSHING - rope	59313	*	*	*	1
8	ROPE - starter	58806	*	*	*	1
9	GRIP - rope	58915	*	*	*	1
10	INSERT	58847	*	*	*	1
11	SHIELD - spring (inner)	59638-A	*	*	*	1
12	SPRING - recoil	58764	*	*	*	1
13	SHIELD - spring (outer)	59639-A	*	*	*	1
14	PULLEY - starter	A-64446	*	*	*	1
15	Includes: LOCK - spring	64049-A	*	*	*	1
15A	BUSHING - spring lock	64400	*	*	*	1
16	WASHER - retaining	58763	*	*	*	1
17	SCREW - hex, 10-32 x 1/2	80648	*	*	*	1
18	NUT - hex, 5/16-24	81117	*	*	*	1
19	WASHER - lock, 5/16	83002	*	*	*	1
20	WASHER - flat, 5/16	84056	*	*	*	1
21	NUT - lock, 10-32	81109-2	*	*	*	2
22	STUD - shoulder	58757-B	*	*	*	2
23	PAWL - starter	58756	*	*	*	2
24	WASHER	58851	*	*	*	2
25	SPRING - starter finger	58758	*	*	*	2
26	SCREEN - starter	58765	*	*	*	1
27	ROTOR - magneto	58809	*	*	*	1
		"P"	59857	*	*	1
28	CONDENSER	63250	*	*	*	1
	w/clamp	59862	*	*	*	1
29	CLAMP - condenser	59622	*	*	*	1
30	SCREW GROUP - condenser	"W"	30261	*	*	1
		"P"	57750	*	*	1
31	COVER - breaker box	"W"	58811	*	*	1
		"P"	59864	*	*	1
32	TERMINAL BLOCK GROUP	"W"	A-58934	*	*	1
32A	NUT (only) - terminal	"P"	55981	*	*	1
33	POINT SET - w/felt	"W"	A-58914	*	*	1
34	Includes: WASHER - point	"W"	28028	*	*	1
35	CLIP - post	"W"	28008	*	*	1
33	POINT SET w/felt and terminal block	"P"	A-59861	*	*	1
36	SCREW GROUP - points	"W"	76421	*	*	1
		"P"	57749	*	*	1
37	GASKET - cover	"W"	58811	*	*	1
		"P"	59865	*	*	1
38	SPRING - cover (clip)	"W"	76413	*	*	1
		"P"	59866	*	*	1
39	SCREW - hex, 12-24 x 9/16	80899	*	*	*	3
40	BOX - breaker	"W"	58875-A	*	*	1
		"P"	59859	*	*	1
41	GASKET	59538	*	*	*	1
42	KEY - rotor	75078	*	*	*	1
43	SEAL - felt	59760	*	*	*	1
44	COIL	"W"	58874	*	*	1
		"P"	59860	*	*	1
45	LEAD - hi-tension	58966	*	*	*	1
46	TERMINAL	11	A-33055	*	*	1
47	SCREW - coil clip	"W"	58872	*	*	1
		"P"	55977	*	*	1
48	CLIP - coil retaining	"W"	63726	*	*	1
		"P"	59863	*	*	1
49	CAP - fuel filler	3	A-64140-A	*	*	1
50	Includes: GASKET	58957	*	*	*	1
51	DECAL	64144	*	*	*	1

No.	Description	Part No.	XL 12	Super XL 12	XL 15	Qty.	
52	SCREW - shoulder, 1/4-20	63407	*	*	*	3	
53	TANK - fuel	58732-4	*	*	*	1	
54	LINE - oil	A-59014	*	*	*	1	
55	VALVE - check	A-59010	*	*	*	1	
56	LINE - oil filter	A-59000	*	*	*	1	
57	FILTER - oil	A-59009	*	*	*	1	
58	FILTER ASSEMBLY	A-59251	*	*	*	1	
59	Includes: FELT	59253	*	*	*	1	
60	COVER - tank	63740-1	*	*	*	1	
61	SCREW - rd., #6 x 1/2	80513	*	*	*	16	
62	LINE - fuel, flexible	63744	*	*	*	1	
63	GASKET	58513	*	*	*	1	
64	CRANKCASE	6	A-58799-C	*	*	1	
65	Includes: BEARING	58956	*	*	*	1	
66	SEAL	58688-A	*	*	*	1	
67	STUD	55871	*	*	*	4	
68	DOWEL - pin	63621	*	*	*	2	
69	RACE - thrust bearing	58725	*	*	*	2	
70	BEARING - needle thrust	58726	*	*	*	2	
71	CRANKSHAFT	63497	*	*	*	1	
72	ROD - connecting	14	A-63477	*	*	1	
73	Includes: BEARING	58724	*	*	*	1	
74	SCREW	14	80889	*	*	2	
75	ROLLERS - set (31)	14	A-63496	*	*	1	
76	PISTON & PIN - 1 3/4" bore	4	A-58903-A	*	*	1	
	1 13/16" bore		A-59468-A	*	*	1	
77	Includes: RING - retaining	75120	*	*	*	1	
78	PISTON RING - 1-3/4" bore	58877	*	*	*	2	
	1-13/16" bore	59436	*	*	*	2	
79	SCREW - hex, 10-32 x 9/16	80825	†	*	†	2	
79A	SCREW - hex, 12-24 x 3/4	80867	†	*	†	2	
80	CAP - muffler	5	A-63246	†	*	†	1
81	STUD	5	59065-A	†	*	†	2
82	BAFFLE	5	59050	†	*	†	1
83	BODY - muffler (3 holes)	6	A-59049-A	†	*	†	1
	(2 holes)		A-59049	†	*	†	1
83A	MUFFLER		58584-2	*	*	†	1
84	WASHER - lock, 1/4	83009	*	*	*	2	
85	NUT - 1/4-28	81065-2	*	*	*	2	
86	SPARK PLUG	11	63710-S	*	*	†	1
87	Includes: GASKET	25038	*	*	*	†	1
88	CYLINDER - 1-3/4" bore	7	58706-4	*	*	†	1
	1-13/16" bore		58706-B1	*	*	†	1
89	CAP - oil filler	A-56580	*	*	*	†	1
	slotted type	A-56580-1	†	†	†	†	1
90	Includes: GASKET	56607	*	*	*	†	1
91	SHIELD	59559	†	*	†	†	1
91A	PLATE	59016-2	*	*	*	†	1
92	PIN - cotter	86301	*	*	*	†	1
93	SCREW - pan, 4-40 x 3/16	80658	*	*	*	†	2
94	LINE - oil	A-59012	*	*	*	†	1
95	SCREW - pan, 12-24 x 1/2	80963	*	*	*	†	1
96	WASHER - felt	59457	*	*	*	†	1
97	WASHER - wick	58866	*	*	*	†	1
98	WASHER - flat, #10	84003-1	*	*	*	†	1
99	SPRING - compression	58867	*	*	*	†	1
100	GASKET	58865	*	*	*	†	1
101	WICK - fuel	58862	*	*	*	†	1
102	STUD - wick	58519	*	*	*	†	1
103	LINE - fuel, formed	A-59007	*	*	*	†	1
104	ELBOW - fuel line	58995	*	*	*	†	1
105	COVER - fuel tank	58739-3	*	*	*	†	1
106	LINE - fuel	2	58958	*	*	†	1
	EXCHANGER - heat (not shown)	A-63442	†	†	†	†	1
	SUPPRESSOR - noise (not shown)	A-63080	†	†	†	†	1
	SPARK ARRESTOR-(not shown)	12	A-63500	†	†	†	1
	MUFFLER - husher (not shown)	A-64306	†	†	†	†	1

Ignition Type - "W" indicates Wico, "P" indicates Phelon.
DO NOT INTERCHANGE PARTS.

HOMELITE XL CHAIN SAWS

Parts used in each model are indicated by an asterisk (*) in the corresponding model column; a dagger (†) indicates an optional part available from your dealer.

Refer to NOTES, circled numerals, on page 7.

No.	Description	Part No.	XL 12	Super XL 12	XL 15	Qty.	No.	Description	Part No.	XL 12	Super XL 12	XL 15	Qty.
1	GASKET	58537-A	*	*	*	2	40	SCREW - hex, 12-24 x 3/4	80867	*	*	*	6
2	SPACER - carburetor	58780	*	*	*	1	41	BUMPER	58961	†	†	*	1
3	LINE - fuel 2	63744	*	*	*	1	42	SCREW - socket, 1/4-20 x 1	80428	*	*	*	1
4	CARBURETOR 8	A-58767-C	*	*	*	1	43	HANDLE BAR	A-58793	*	*	*	1
5	PIN - cotter	86324	*	*	*	1	44	NUT - 12-24	81068	*	*	*	2
6	ROD - choke	A-58826	*	*	*	1	45	WASHER - lock, #12	83056	*	*	*	2
7	INSTRUCTIONS	59024	*	*	*	1	46	FITTING - oil	56707	*	*	*	1
8	COVER	58773-5	*	*	*	1	47	GASKET 9	63355	*	*	*	1
9	NUT - cover	A-58882	*	*	*	1	48	DRIVE CASE	A-58925-A	*	*	*	1
10	RING - retaining	58319-A	*	*	*	1	49	Includes: SEAL	58688-A	*	*	*	1
11	FILTER ELEMENT 15	63589	*	*	*	1	50	BEARING	58956	*	*	*	1
12	GASKET - mounting stud	58392-1	*	*	*	1	51	BOLT - guide bar	58753	*	*	*	2
13	BRACKET - cover	A-58818-A	*	*	*	1	52	SCREW - pin, 1/4-20 x 2	60885	*	*	*	1
14	ROD - throttle	58836	*	*	*	1	53	PIN - bar adjusting	58763-1	*	*	*	1
15	BOOT - rod	58348	*	*	*	1	54	NUT - lock, 1/4-20	81108	*	*	*	1
16	WASHER - lock, #10	83046	*	*	*	2	55	SCREW - hex, 12-24 x 9/16	80899	*	*	*	5
17	SCREW - hex, 10-32 x 2-1/4	80481	*	*	*	2	56	COVER - clutch 13	63051-1	*	*	*	1
18	PIN - throttle lock	58924	*	*	*	1	57	SHOE - clutch 13	63052	*	*	*	3
19	SPRING - lock	58405	*	*	*	1	58	BACK PLATE 13	63053-1	*	*	*	1
20	COVER - handle	A-59213	*	*	*	1	59	SPRING - clutch 13	68034	*	*	*	3
	Includes: BUSHING - pin	59064	*	*	*	1	60	BRACKET - handle 10	59246-3	*	*	*	1
21	SCREW - pan, 8-32 x 1/2	80560	*	*	*	2	61	PLATE - inner guide bar	58781	*	*	*	1
22	RING - retaining	58409	*	*	*	1	62	PLATE - outer guide bar	58782	*	*	*	1
23	TRIGGER - throttle	58859	*	*	*	1	63	WASHER - flat, 5/16	84056	*	*	*	2
24	SCREW - hex, 12-24 x 7/8	80891	*	*	*	5	64	NUT - 5/16-18	81196	*	*	*	2
25	GROMMET	58362	*	*	*	1		DIRECT DRIVE MODELS					
26	BUTTON	57289-1	*	*	*	2	65	COVER - drive case	58750-2	*	*	*	1
27	VALVE - check	A-59011	*	*	*	1	66	NUT - 3/8-24	81192	*	*	*	1
28	HANDLE & HOUSING w/#12	A-59507-A	*	*	*	1	67	WASHER - flat, 3/8	84010-1	*	*	*	1
	Includes: PLUG 3	63303	*	*	*	1	68	WASHER - thrust, (outer)	58926	*	*	*	1
		71505	*	*	*	1	69	SPROCKET & DRUM 10					
		86301	*	*	*	1		standard - 3/8" pitch, 7 tooth	A-59552	*	*	*	1
		63290	*	*	*	1		optional - 3/8" pitch, 8 tooth	A-63346	†	†	*	1
29	GROMMET - "LO-HI"	59058	*	*	*	1		.404 pitch, 7 tooth	A-59555	†	†	*	1
30	SPRING	59293	*	*	*	1	70	Includes: BEARING - needle	72311	*	*	*	1
31	PLUNGER	A-57834-10	*	*	*	1		New "splined" type (not shown)					
32	Includes: "O" RING	74388	*	*	*	1		DRUM & HUB - sprocket	A-63288	†	†	*	1
33	"O" RING	59074	*	*	*	1		Includes: BEARING - needle	72311	*	*	*	1
34	REED	58775	*	*	*	1		SPROCKET - "splined"					
35	SPRING - reed	59053	*	*	*	1		rim type - 3/8" pitch, 7 tooth	63284	†	†	*	1
36	STOP - reed	59421	*	*	*	1		.404 pitch, 7 tooth	63285	†	†	*	1
	STOP - reed	58776	*	*	*	1		1/2" pitch, 7 tooth	63287	†	†	*	1
37	SCREW - pan, 4-40 x 3/16	80658	*	*	*	2	71	RACE - inner 10	55584	*	*	*	1
38	SCREW - idle 5/16-18 3	63302	*	*	*	1	72	WASHER - thrust (inner)	58833	*	*	*	1
38A	10-32	59310	*	*	*	1	73	COVER - clutch 13	58751	*	*	*	1
39	SPRING 3	59319	*	*	*	1	74	SHOE - clutch 13	58928-1	*	*	*	3
							75	SPIDER - clutch 13	58927-1	*	*	*	1
							76	SPRING - clutch 13	55123-C	*	*	*	2

Service replacement carburetor #A-58767-C supplied with idle stop screw and spring (used in units with internal adjustment), remove these when using index #39, or index #39A with #40.

Refer to Carburetor Parts List #23766-C.
Use Repair Parts Kit #58972, Gasket Set #58971.

SPECIAL TOOLS (available on order)

Part No.	Description	Part No.	Description
A-23937	COMBINATION WRENCH 11	23760	BEARING ASSEMBLY AND DISASSEMBLY - sprocket drum - sleeve bearing
A-22808	COMBINATION WRENCH 11	23800	TOOL - seal assembly (crank and drive cases)
22828	PLIERS - piston snap ring	A-23960	REMOVER AND LOCKING BRACKET - rotor
23528	WRENCH - socket screw (conn. rod)	A-23696	REMOVER - threaded spider 13
23756	BEARING ASSEMBLY AND DISASSEMBLY - conn. rod		GEAR DRIVE MODELS
23757	BEARING ASSEMBLY AND DISASSEMBLY - drive and crank cases	23665	PLIERS - planetary snap ring
23819	PLUG - needle bearing (sprocket)	23772	BEARING ASSEMBLY & DISASSEMBLY - planetary follower
-----	BEARING PULLER - clutch drum (#A-78 Snap-On or equivalent)	A-23792	SPROCKET HOLDER
23758	SEAL ASSEMBLY - drive and crank cases	23773	BEARING ASSEMBLY - clutch drum
23759	SLEEVE - crankshaft assembly	A-23934	CLUTCH SPANNER WRENCH 13
A-23949	PLUG - piston pin removal		

PAINT	
23318	SPRAY CAN - blue
22771	SPRAY CAN - red
23343	SPRAY CAN - green
23560	SPRAY CAN - white

ALWAYS FURNISH MODEL AND SERIAL NUMBER WHEN ORDERING PARTS.

HOMELITE XL CHAIN SAWS

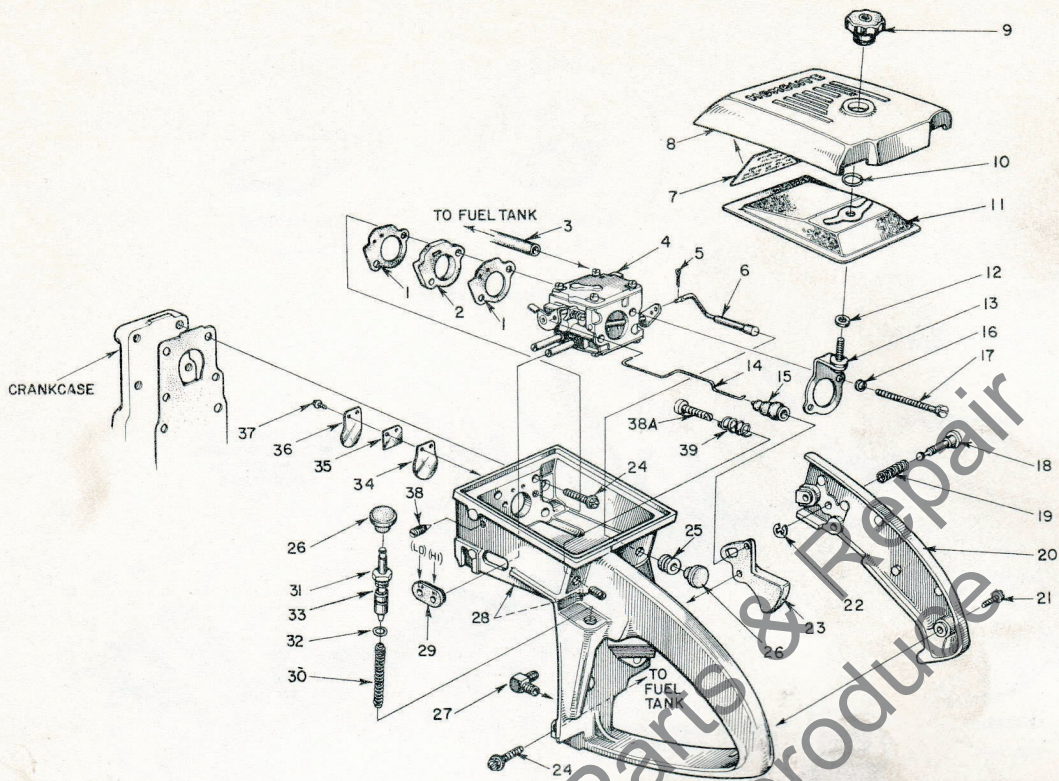


FIGURE 3

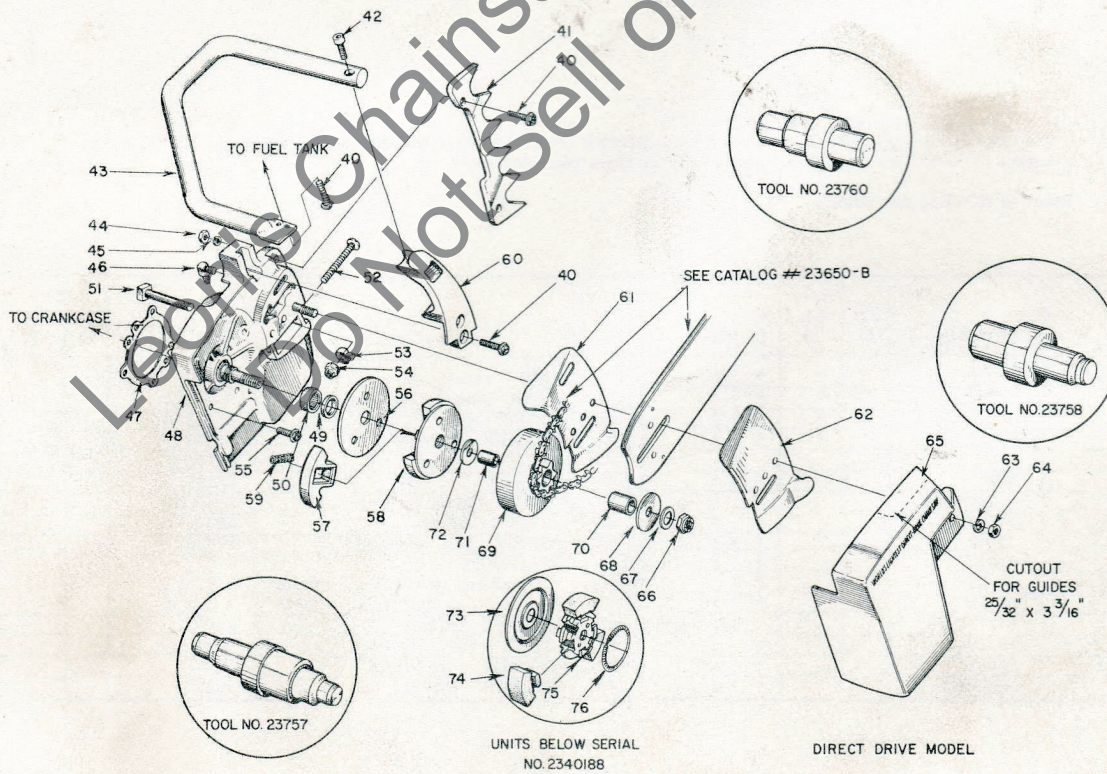


FIGURE 4

ALWAYS FURNISH MODEL AND SERIAL NUMBER WHEN ORDERING PARTS.

HOMELITE XL CHAIN SAWS

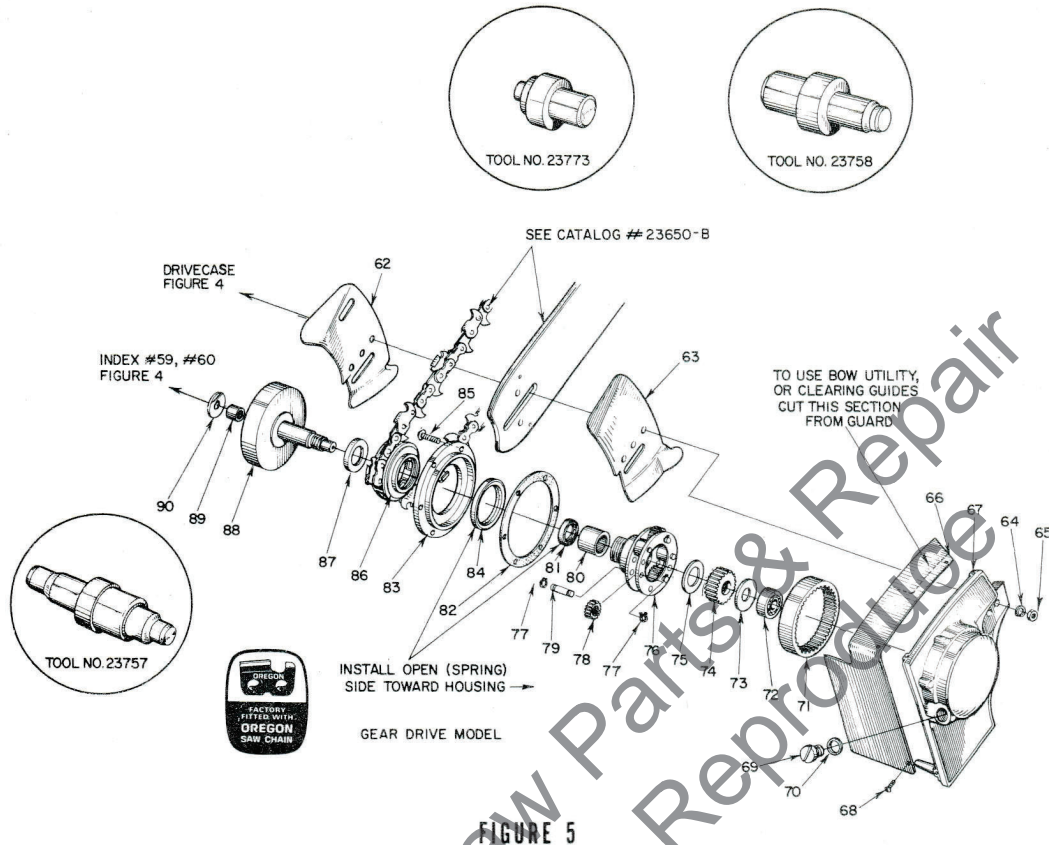


FIGURE 5

Parts used in each model are indicated by an asterisk (*) in the corresponding model column; a dagger (†) indicates an optional part available from your dealer.

Refer to NOTES, see below.

No.	Description	Part No.	Super			Qty.
			XL 12	XL 12	XL 15	
62	PLATE - inner guide bar	58781	*	*	*	1
63	PLATE - outer guide bar	58782	*	*	*	1
64	WASHER - lock, 5/16	83002	*	*	*	2
65	NUT - 5/16-18	81196	*	*	*	2
GEAR DRIVE MODEL						
66	GUARD - chain	59071			*	1
67	HOUSING - gear w/pins	A-59078-3			*	1
68	SCREW - pan, 10-32 x 3/8	80579			*	3
69	CAP - oil filler	58482			*	1
70	GASKET	55107			*	1
71	GEAR - ring	58107			*	1
72	BEARING - ball	58120-S			*	1
73	WASHER - thrust	58118-A			*	as req'd.
74	GEAR - sun	58109-1A			*	1
75	WASHER - thrust	59081			*	1
76	CARRIER - planet	A-59083			*	1

No.	Description	Part No.	XL 12	Super		Qty.
				XL 12	XL 15	
77	RING - retaining	29270			*	6
78	GEAR -planet w/bearing	A-59062			*	3
79	SHAFT - gear	58953-A			*	3
80	BEARING - needle	58952			*	1
81	SEAL	56134-1			*	1
82	GASKET	58947			*	1
83	COVER - gear housing	A-59085			*	1
84	Includes: SEAL	58126			*	1
85	SCREW - pan, 6-32 x 1/2	80630			*	6
86	SPROCKET standard, 3/8" pitch, 8 tooth optional, .404 pitch, 8 tooth	A-59021 A-59297			*	1
87	WASHER - thrust	58949			†	1
88	SHAFT - drive w/drum	A-58955			*	1
89	BEARING - needle	58951			*	1
90	WASHER - thrust	59219			*	1

HOMELITE XL CHAIN SAWS

NOTES

- ① HOUSING - #A-59562 supersedes #A-59290 which superseded #A-58803-1, see BSM #495 CS. Later housings do not use #58761 flanged bushing (see inset, Fig. 1).
SHIELD - #59638-A and #59639-A used with later housings, do not use in #A-58803-1 Housing with removable flanged bushing (#58761).
- ② CONDENSER - #63250 supersedes #58817 in WICO ("W") system.
LINE - #58958 (with carburetor end expanded) supersedes #58997 in units below serial #2188611.
BOX - #58875-A (with recess in crankcase side) supersedes #58875, recess accomodates felt seal.
SEAL - #59760 used only in #58875-A Box.
CLIP - 63726 supersedes 58873 in the "Wico" (W) system.
- ③ SCREW (shoulder) #63407 requires 1/4" holes in fuel tank ("F" drill), and 1/4-20 tapped holes in crankcase. Screw #80867 used to mount early tanks (3/16" holes) to early crankcase with 12-24 threads. See TANK, CRANKCASE.
TANK (service replacement) has 1/4" mounting holes, requires three 1/4-20 x 3/4 screws (#63407) and mating 1/4-20 tapped holes in crankcase. See SCREW, CRANKCASE.
CRANKCASE (service replacement) has three 1/4-20 tapped holes for tank mounting screws. Early crankcase with with 12-24 threads may be tapped out. See SCREW, TANK.
CAP, FUEL FILLER-A-64140-A supersedes A-59956 with 56865 Valve.
- ④ PISTON & PIN - #A-58903-A or #A-59468-A uses one retaining ring (#84), early Piston & Pin requires two rings (#84).
- ⑤ CAP - #A-63246, (with reinforcing plate inside) supersedes #59051, requires #59065-A Stud (1/16" shank).
STUD - #59065-A used with #A-63246 Cap. #59065 used with #59051 Cap.
- ⑥ Body #A-59049-A requires cylinder with 3 mounting holes (#58706-B1); #A-59049 still required on cylinder with 2 mounting holes. See ⑦.
- ⑦ Service replacement Cylinder #58706-B or #58706-B1 has 3 muffler mounting holes. #A-59049-A Body recommended. #A-59049 can be used. See ⑥.
- ⑧ CARBURETOR - #A-58767-C supersedes #A-58767-B, #A-58767-A, and #A-58767; supplied with idle stop screw and spring (internal idle adjustment), remove these parts when using either index #38, or #38A with #39.
PLUG - #63303 (5/16-18) plugs tapped hole for index #38, #71505 (10-32) plugs hole for index #38A.
SCREW - #63302 used with #A-58767-C carburetor only. #59310 requires spring #59319.
SPRING - #59319 required with #59310 screw.
- ⑨ GASKET - #63355 supersedes "O" Ring.
- ⑩ BRACKET - #59246 supersedes #58766
SPROCKET & DRUM - #A-59552 (with needle bearing) supersedes #A-58797 (with sleeve bearing), see RACE. #A-59555 (with needle bearing) supersedes #A-59309 (with sleeve bearing), see RACE.
BEARING - #72311 needle bearing required with #A-59552 and #A-59555 Sprocket & Drum, see RACE. #58784 sleeve bearing required with #A-58797 and #A-59309 Sprocket & Drum, see RACE.
RACE - #55584 required with #72311 needle bearing. #58787 required with #58784 sleeve bearing.
- ⑪ SPARK PLUG - #3710-S (CJ-8) Plug available only with standard Electrodes - use A-33055 Terminal, 58917-S (TJ-8J Plug and 59558-S (UTJ-11P) Plug with Platinum Electrodes use 58918 Cover and 58919 Spring.
COMBINATION WRENCH - A-23937 Wrench is used with 63710-S Plug. A-22808 is used with 58917-S and 59558-S Plugs.
- ⑫ SPARK ARRESTOR - When A-63500 is used with A-63080 Noise Suppressor use 63503-1 Stud Shim (.060), without A-63080 use 63503 Stud Shim (.030).
- ⑬ CLUTCH ASSY. - For units below serial #2340188 order parts as illustrated or Convert Clutch Assy. by ordering A-63608 Clutch and Cover Assy. A-23696 Remover used on units below serial #2340188, A-23934 used for later units.
- ⑭ CRANKSHAFT - Units below serial #2079523 use #58439.
CONNECTING ROD - Units below serial #2079523 use #A-58769.
ROLLERS, SET - Units below serial #2079523 use #A-58864 (28 Rollers per set.)
- ⑮ FILTER ELEMENT - #63589 supersedes 58774-1. Part #58884 Gasket still available for 58774-1 Filter.



HOMELITE

A **Textron** DIVISION • PORT CHESTER, NEW YORK

Leon's Chainsaw Parts & Repair
Do Not Sell or Reproduce