

PART NO. 23817-A REV. 3

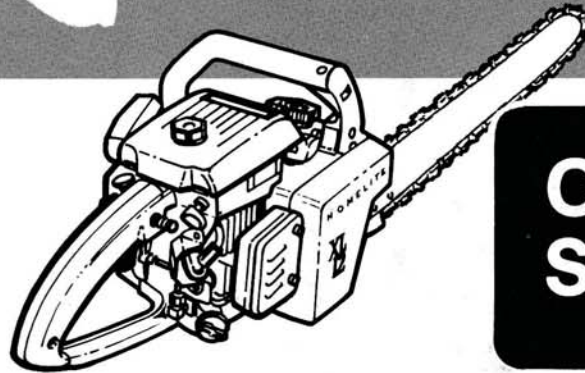
Printed in U.S.A.

Price 35¢

PARTS LIST

XL-12

XL-12W



**CHAIN
SAWS**

HOMELITE TEXTRON

Homelite Division of Textron Inc.

**XL-12
XL-12W**

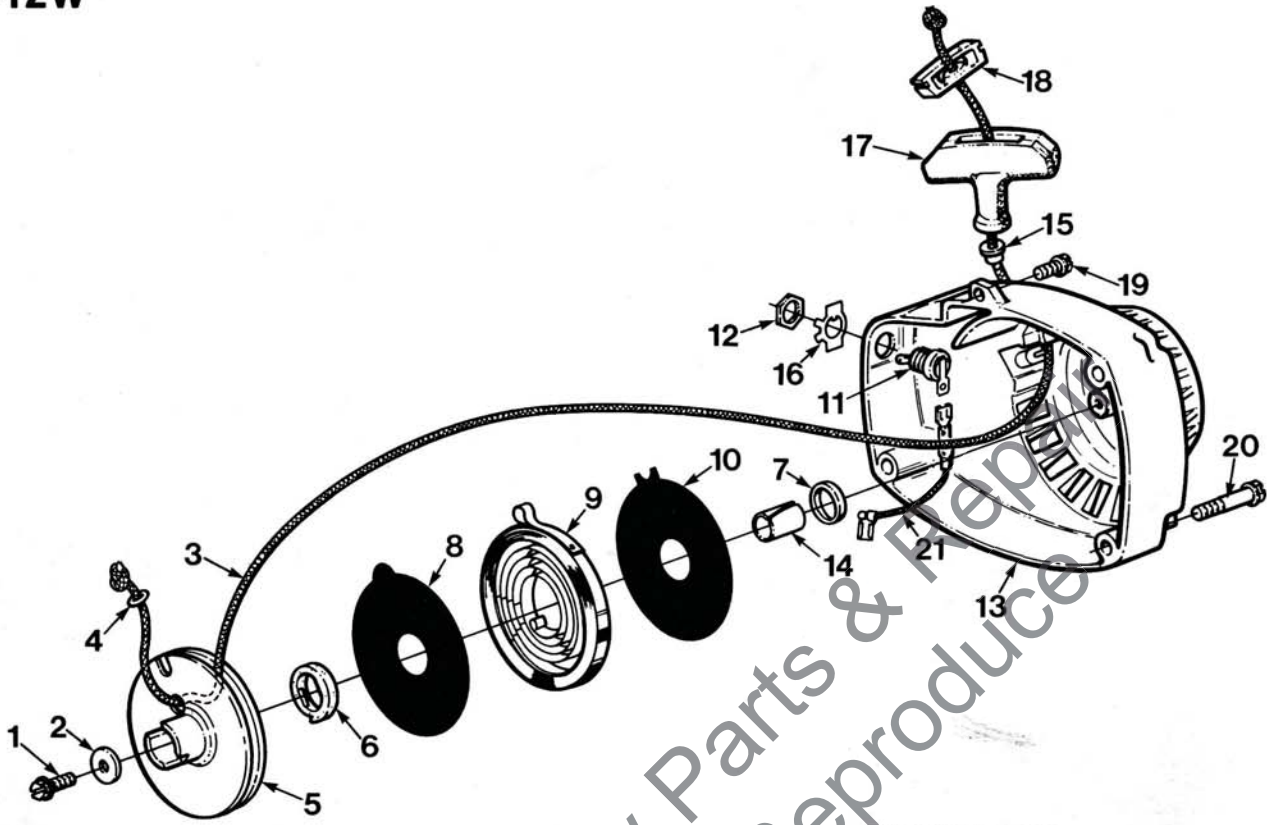


FIGURE 1

No.	Description	Part No.	Qty.
1	SCREW- Hex hd. (#10-32 x 1/2)	80648	1
2	WASHER- Retaining	58763	1
3	ROPE- Starter	A-93875	1
	Includes:		
4	WASHER- Flat (Nylon)	93862	1
5	PULLEY- Rewind starter	A-64446	1
	Includes:		
6	LOCK- Spring (Nylon)	64049-B	1
7	BUSHING- Spring lock	64400	1
8	SHIELD- Spring (Outer)	59639-A	1
9	SPRING- Rewind	58764-A	1
10	SHIELD- Spring (Inner)	59638-A	1
11	SWITCH- Grounding	A-57650-3A	1
	Includes:		
12	NUT- Hex	72084-A1	1
13	HOUSING- Fan and rewind	A-64518	1
	Includes:		
14	BUSHING- Starter post	64443	1
15	BUSHING- Starter cover	67177	1
16	PLATE- Indicating	70839	1
17	GRIP- Starting rope w/insert	A-69962-A	1
	Includes:		
18	INSERT- Rope retaining	70018-A	1
19	SCREW- Hex hd. (#12-24 x 5/8)	80676	1
20	SCREW- Hex (#12-24 x 1 11/16)	58963	3
21	LEAD- Ground	A-59031	1

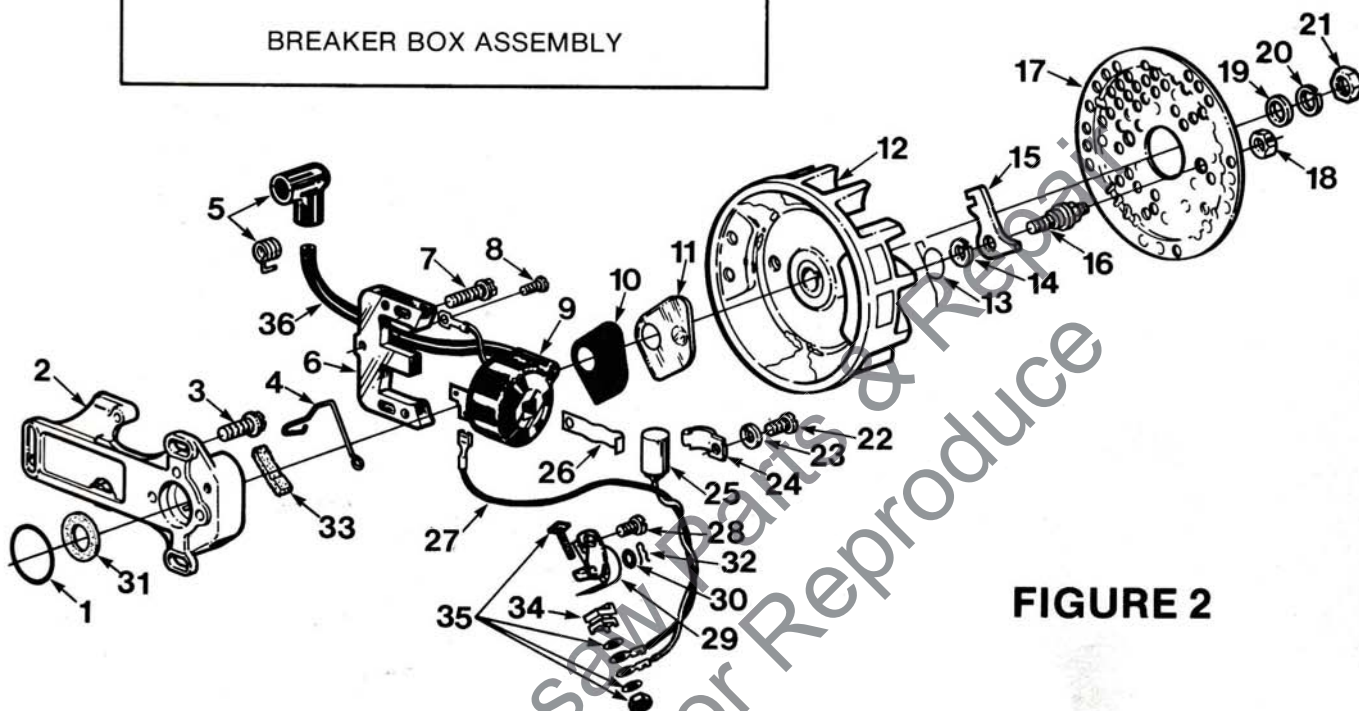
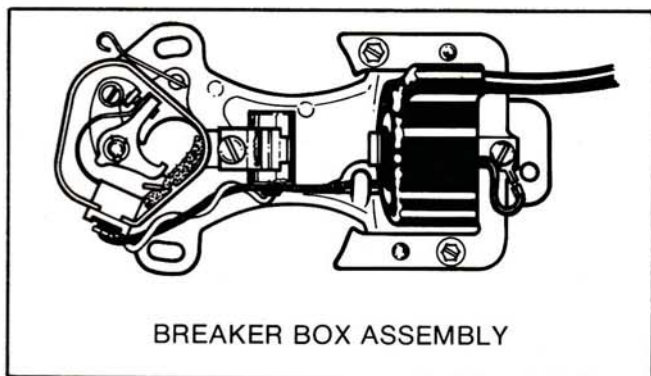


FIGURE 2

No.	Description	Part No.	Qty.
1	GASKET- Stator	59538	1
2	BOX- Breaker	(W) 93094	1
	BOX- Breaker (w/core)	(P) 59859	1
3	SCREW- Hex hd. (#12-24 x 5/8)	80676	3
4	CLIP- Breaker box cover	(W) 76413	1
	CLIP- Dust cover	(P) 59866	1
5	TERMINAL- High tension lead	A-33055	1
6	CORE	(W) 93098	1
7	SCREW- Hex washer hd. (#8-32 x 3/4)	(W) 82248	2
8	SCREW- Terminal	(W) 64090	1
	SCREW- Ground lead	(P) 55977	1
9	COIL	(W) 93097	1
	COIL- Ignition	(P) 59860	1
10	GASKET- Breaker box cover	(W) 58810	1
	GASKET- Breaker Box cover	(P) 59865	1
11	COVER- Breaker box	(W) 58811	1
	COVER- Breaker box	(P) 59864	1
12	ROTOR- Magneto	(W) 70639	1
	ROTOR- Magneto	(P) 59857	1
13	SPRING- Starter pawl	56375-2	2
14	WASHER- Lock	70901	2
15	PAWL- Starter	58756	2
16	STUD- Shoulder	58757-E	2
17	SCREEN- Starter	58765	1
18	NUT- Center lock (#10-32)	81206	2
19	WASHER- Flat (5/16)	84056	1

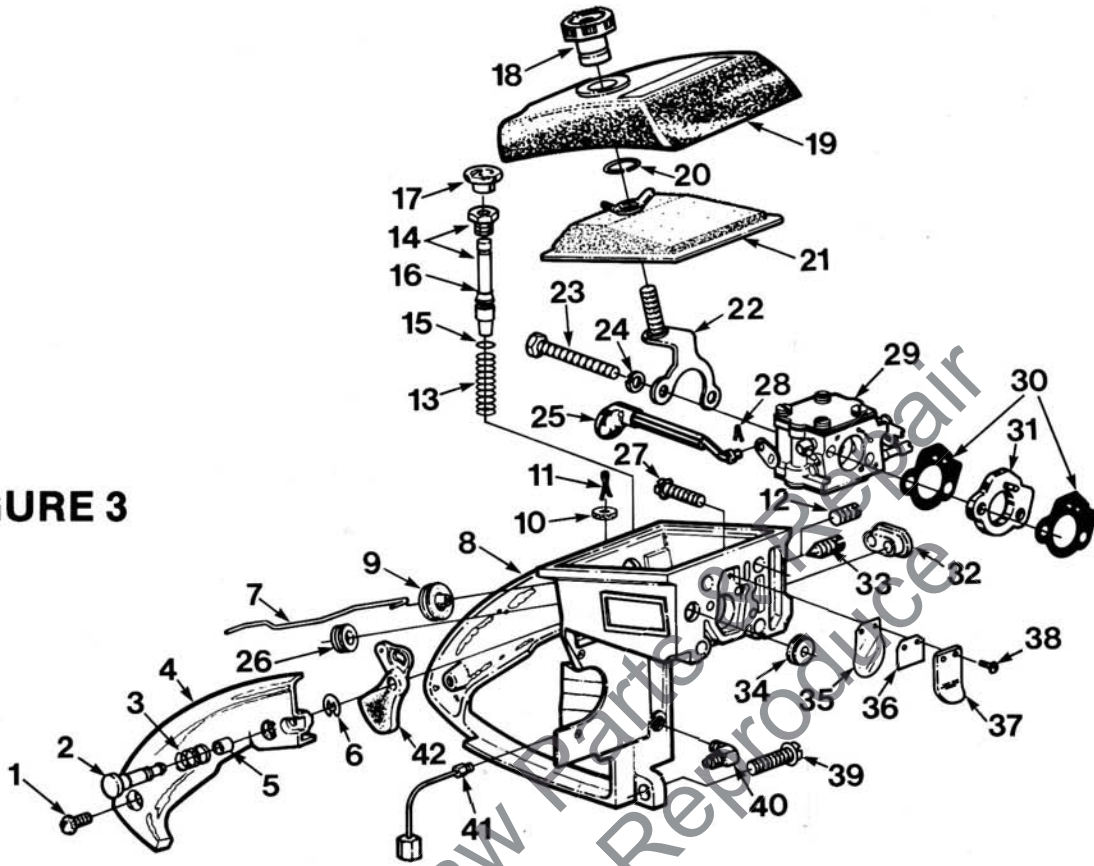
No.	Description	Part No.	Qty.
20	WASHER- Lock (5/16)	83002	1
21	NUT- Hex (#5/16 - 24)	81117	1
22	SCREW- Hd. (#8-32 x 5/16)	(W) 30261	1
	SCREW- Breaker fastening	(P) 55985	1
23	WASHER- Lock	83060	2
24	CLAMP- Consenser	(W) 59622	1
25	CONDENSER- Ignition	(W) 63250-A	1
	CONDENSER- Ignition	(P) 59862	1
26	CLIP- Coil retaining	(W) 63726	1
	CLIP- Coil retaining	(P) 59863	1
27	LEAD	(W) 93095	1
28	SCREW- Contact plate	(W) 76421	1
	SCREW- Contact plate	(P) 57749	1
29	POINTS- Breaker	(W) A-58914-A	1
	Includes:		
30	WASHER- Plain	(W) 28028	A/R
31	SEAL- Felt	59760	1
32	CLIP	(W) 28008	1
33	CAM- Felt		1
29	POINTS- Breaker	(P) A-59861	1
34	BLOCK- Terminal	(W) A-68162	1
	Includes:		
35	NUT- Connection stud	(W) 93099	1
	NUT- Terminal (hex)	(P) 55982	1
36	LEAD- High tension	58966	1

(W) Wico (P) Phelon

Wico and Phelon parts are not interchangeable.

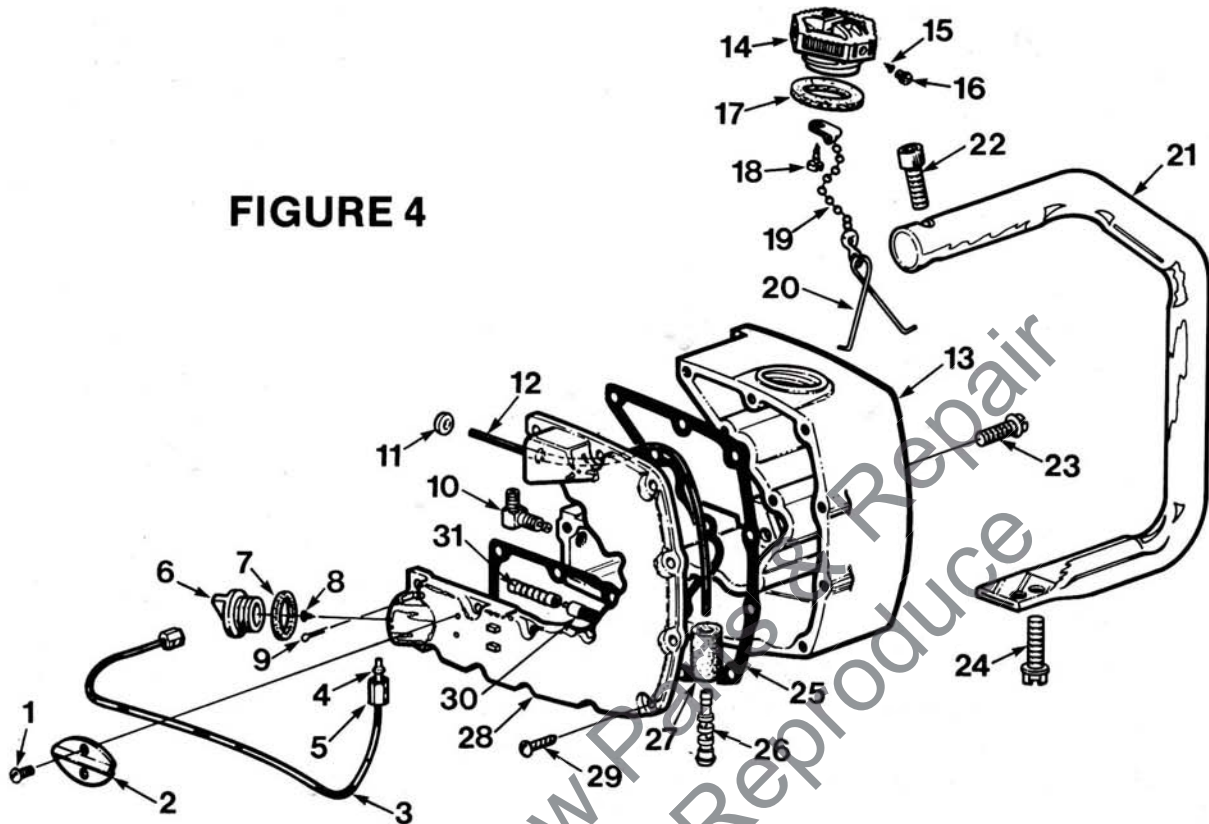
**XL-12
XL-12W**

FIGURE 3



No.	Description	Part No.	Qty.	No.	Description	Part No.	Qty.
1	SCREW- Pan hd.(#8-32 x 1/2)	80560	2	24	WASHER- Lock #10	83046	2
2	PIN- Trigger latch	58924-4	1	25	ROD- Choke	A-68429	1
3	SPRING- Latch throttle	58405	1		Includes:		
4	COVER- Throttle handle w/bearing	A-59213-1	1	26	GROMMET	64862	1
	Includes:			27	SCREW- Hex hd (#12-24 x 7/8)	80891	4
5	BUSHING- Nylon	59064	1	28	PIN- Cotter 1/32 dia.	86324	1
6	RING- Retaining	58409	1	29	CARBURETOR (Tillotson)	A-94162	1
7	ROD- Throttle	58836	1		CARBURETOR (Tillotson)	A-69647-A	1
8	THROTTLE HANDLE	A-67838	1		CARBURETOR (Walbro)	A-68407-A	1
	Includes:			30	GASKET	58537-A	2
9	BOOT- Throttle rod	67634	1	31	SPACER- Carburetor	58780	1
10	WASHER- Felt	63290	1	32	GROMMET	59058	1
11	PIN- Cotter	86301	1	33	SCREW- Idle adjustment	63302	1
12	PLUG- Screw	63303	1	34	GROMMET	68279	1
13	SPRING- Plunger	59293	1	35	REED- Valve	58775	1
14	PLUNGER- Oil pump	A-57834-10	1	36	SPRING- Reed	59053	1
	Includes:			37	REED- Stop	58776	1
15	"O" Ring	74388	1	38	SCREW- Pan hd. (#4-40 x 3/16)	80658	2
16	"O" Ring	59074	1	39	SCREW- Hex hd. (#12-24 x 7/8)	80891	1
17	BUTTON- Choke rod	57289-1	1	39	SCREW- Hex hd. (#12-24 x 1)(XL-12W)	80864	1
18	NUT- Cover mounting	A-65272	1	40	VALVE- Check	A-59011	1
19	COVER- Air filter and label	A-70758	1		Includes:		
20	RING- Retaining	58319-A	1		BALL- (Not shown)	25527	1
21	FILTER ELEMENT- Air	63589-A	1	41	LINE- Oil	A-59014	1
22	BRACKET- Cover	A-58818-A	1	42	TRIGGER- Throttle	58859	1
23	SCREW- Hex (#10-32 x 2 1/4)	80481	2				

FIGURE 4



No.	Description	Part No.	Qty.	No.	Description	Part No.	Qty.
1	SCREW- Pan hd. (#4-40 x 1/4)	80919	2	21	HANDLE BAR	A-58793-A	1
2	PLATE- Retainer	59016-1	1	22	SCREW- Socket hd. (1/4-20 x 1)	80428-1	1
3	LINE- Oil	A-59012	1	23	SCREW- Hex hd. (1/4-20 x 3/4)	63407	3
	Includes:			24	SCREW- Hex (12-24 x 3/4)	80867	2
4	SLEEVE- Compression (1/8)	25301	2	25	GASKET- Fuel tank (accessory)	65642	1
5	NUT- Compression (5/16 - 24)	25302	1	26	FILTER- Fuel	A-69923	1
6	OIL CAP- (Vented)	A-63717-C	1		Includes:		
	Includes:			27	ELEMENT- Felt filter	64083	1
7	GASKET- Filler cap	56607	1	28	COVER- Fuel tank	63740-2	1
8	VALVE- Check	69451	1	29	SCREW- (#6-32 x 1/2) round	80513	16
9	PIN- Cotter	86301	1	30	FILTER- Oil	A-59009-A	1
10	VALVE- Inlet check	A-59010	1	31	LINE- Pick up	59000	1
	Includes:						
	BALL- (Not shown)	25527	1				
11	GROMMET	68046	1				
12	TUBING- Rubber (9 1/4")	93112-37	1				
13	TANK- Fuel w/cap	A-68396	1				
	Includes:						
14	CAP- Fuel filler	A-69500-A	1				
	includes:						
15	VALVE- Check (oval duck bill)	69451	1				
16	FILTER- Filler cap	69454	1				
17	GASKET- Fuel filler cap	69501	1				
18	SCREW- Plastite pan hd. (6 x 1/4)	82256	1				
19	CHAIN- Bead	69502	1				
20	RETAINER- Filler cap	69503	1				

**XL-12
XL-12W**

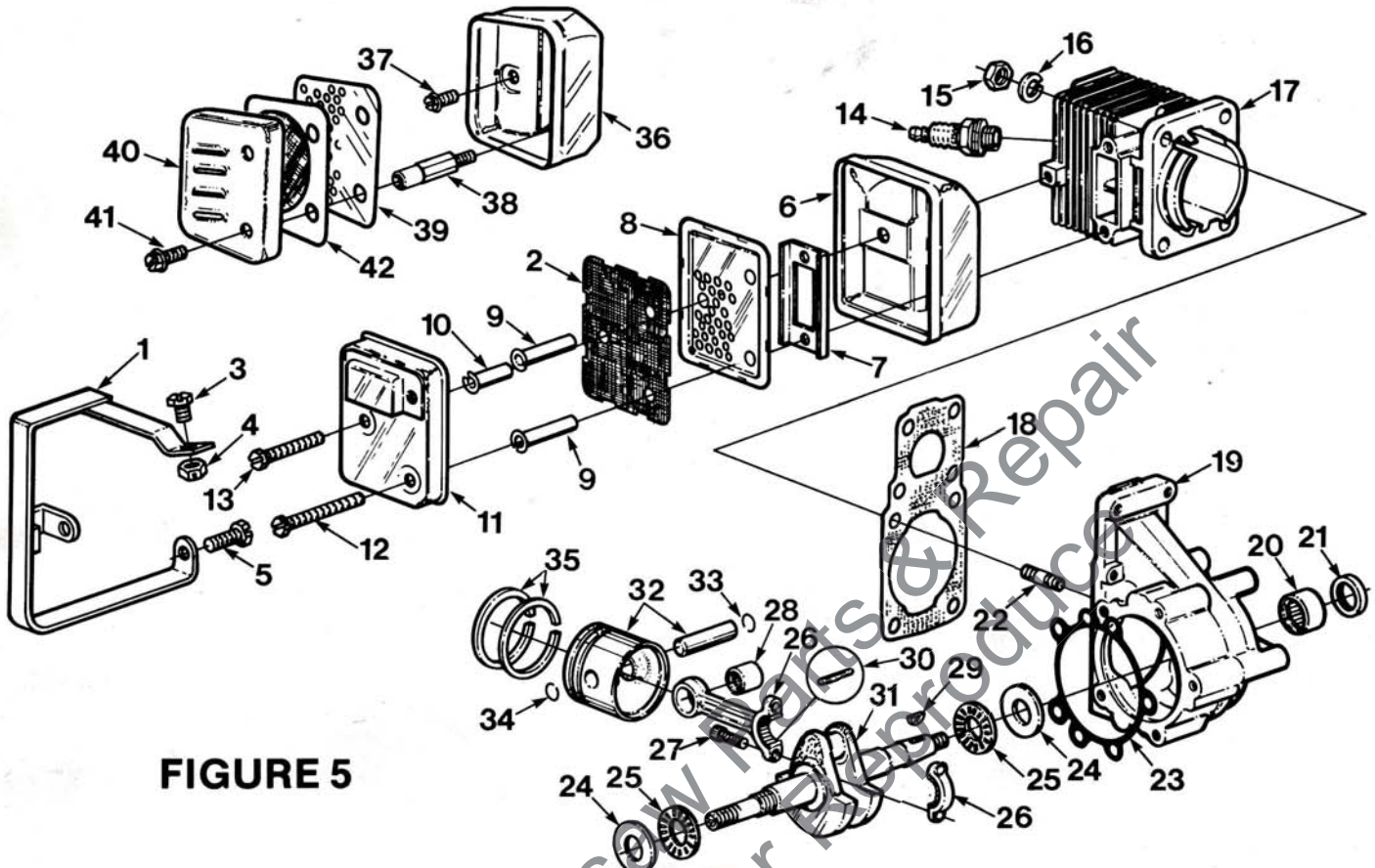


FIGURE 5

No.	Description	Part No.	Qty.	No.	Description	Part No.	Qty.
1	KIT- Muffler temp. (XL-12W) Note 3 Includes: GUARD	A-94212	1	21	SEAL- Shaft	12282-A	1
2	SCREEN- Spark arrestor	93979	1	22	STUD	55871	4
3	SCREW- Hex hd. (#12-24 x 5/8)	80676	1	23	GASKET- Crankcase	63355	1
4	NUT- Hex (#12-24)	81225	1	24	RACE- Needle thrust	58725	2
5	SCREW- Hex hd. (#12-24 x 1)	80864	1	25	BEARING- Needle thrust	58726	2
	MUFFLER- (XL-12W)	A-94219	1	26	CONNECTING ROD Includes:	A-63477-B	1
6	BODY- Muffler	93981	1	27	SCREW- Cap (Hex socket hd.)	69919	2
7	PLATE- Muffler	94133	1	28	BEARING- Needle (connecting rod)	68512	1
8	BAFFLE- Muffler	93980	1	29	KEY- Woodruff	75078	1
9	SPACER- Muffler	93983-01	2	30	NEEDLE- Roller (set of 31)	A-69054	1
10	SPACER- Muffler	93983-02	1	31	CRANKSHAFT	63497-1	1
11	CAP- Muffler	A-93982	1	32	PISTON Includes:	A-58903-C	1
12	SCREW- Hex hd. (#12-24 x 2 1/4)	94128	2	33	RING- Retaining (piston pin)	75120	1
13	SCREW- Hex hd. (#12-24 x 1 7/8)	94129	1	34	RING- Piston pin retaining	64813	1
	SHIELD- Heat (Opt.)	59559	1	35	RING- Piston	58877	2
14	SPARK PLUG Includes: GASKET - (Not shown)	63710-S	1		MUFFLER Includes:	A-59052-A	1
15	NUT- Hex (1/4 - 28)	81065-2	4	36	MUFFLER- Body	A-59049-1	1
16	WASHER- Lock (1/4)	83009	4	37	SCREW- Slotted hex hd. (#12-24 x 1/2)	80821	1
17	CYLINDER Includes:	A-69715	1	38	STUD- Muffler	59065-B	2
18	GASKET- Cylinder	58513	1	39	BAFFLE- Muffler	59050	1
19	CRANKCASE Includes:	A-65736	1	40	MUFFLER- Cap	A-63246-1	1
20	BEARING- Needle	58956	1	41	SCREW- Hex hd. (#10-32 x 9/16)	80825	2
				42	SPARK ARRESTOR- *(Accessory)	A-63500-1A	1

(*For A-59052-A muffler only)

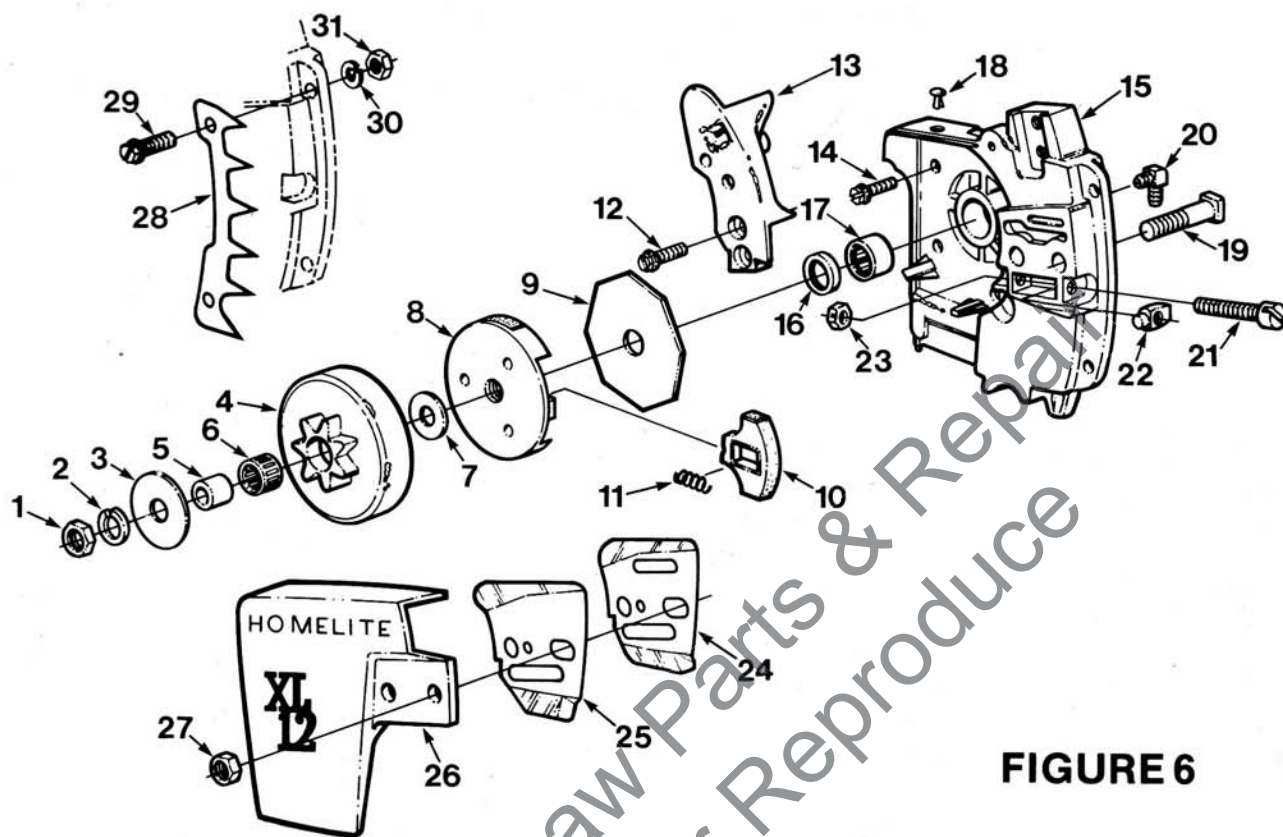
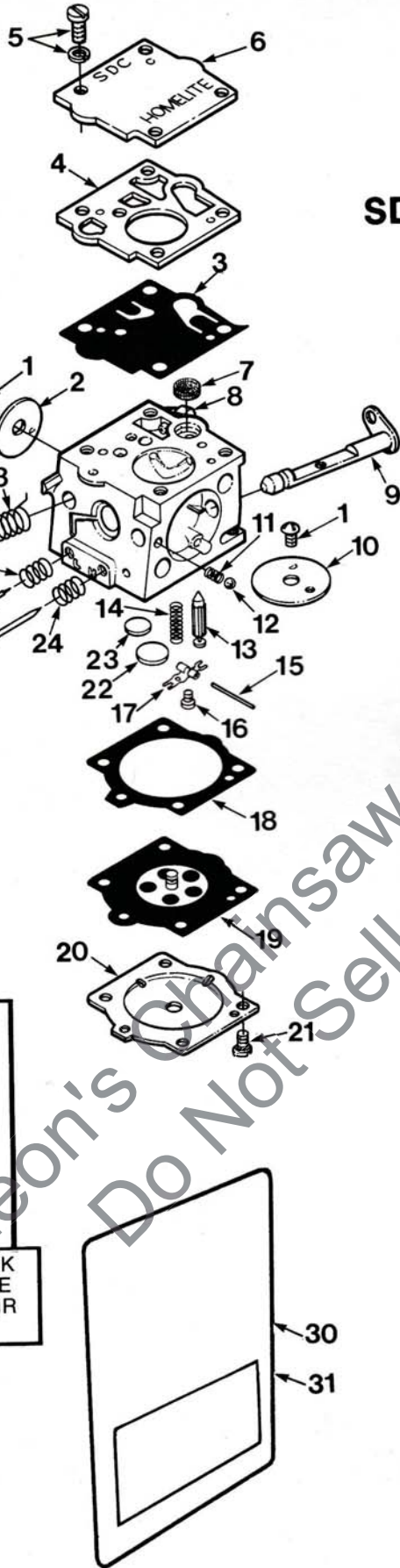


FIGURE 6

No.	Description	Part No.	Qty.	No.	Description	Part No.	Qty.
1	NUT- Hex (#3/8 - 24)	81124	1	11	SPRING- Clutch	67053	3
2	LOCK WASHER (3/8)	83018	1	12	SCREW- Hex (#12-24 x 3/4)	80867	2
3	WASHER- Thrust (outer)	65964	1	13	BRACKET- Handle bar	59246-5	1
4	SPROCKET & DRUM- 3/8 7T	A-69633-A	1	14	SCREW- (#12-24 x 9/16)	80899	5
	Includes:			15	DRIVECASE	A-58925-D	1
4	SPROCKET & DRUM	A-65884	1		Includes:		
5	RACE- Inner	65746-A	1	16	SEAL	12282-A	1
6	BEARING- Roller	64124	1	17	BEARING- Needle	58956	1
	SPROCKET & DRUM- .404 7T (Note 2)	A-59555	1	18	PLUG- Button	94242	1
	SPROCKET & DRUM- 3/8 8T	A-63346	1	19	BOLT- Guide bar	67485	2
	Includes:			20	FITTING- Tube elbow 90° connection	56707	1
	BEARING- Needle (Note 2)	72311	1	21	SCREW- Guide bar adjusting	63225	1
	RACE- Inner (Note 2)	55584	1	22	PIN- Guide bar adjusting	93039	1
	KIT- Hub and drum (Note 1) optional	A-67090	1	23	NUT- Gripco	81204	1
	Includes:				KIT- Guide bar plate	A-70618	1
	HUB & DRUM- 7 splined	A-65990	1		Includes:		
	BEARING- Needle (unit cage)	64124	1	24	PLATE- Guide bar (inner)	70399	1
	RACE- Inner	65746-A	1	25	PLATE- Guide bar (outer)	70400	1
	WASHER- Thrust	58833	1	26	COVER- Drivecase	58750-16	1
	SPROCKET- Rim, 3/8 pitch, 7 tooth	63284	1	27	NUT- Hex (#3/8 -16)	81089-2	2
7	THRUST- Washer	58833	1		NUT- Hex (#5/16 - 18) (Note 4)	81196	1
	CLUTCH ASSEMBLY	A-69480-B	1	28	KIT- Bumper plate, optional	A-59043	1
	Includes:				Includes:		
8	PLATE- Back clutch	65760-1B	1	29	SCREW- Hex hd. (#12-24 x 3/4)	80867	2
9	COVER- Clutch	63051	1	30	LOCK WASHER- (#12)	83056	2
10	SHOE- Clutch	69461	3	31	NUT- Hex (#12)	81068	2

XL-12
XL-12W



SDC-62

FIGURE 7

No.	Description	Part No.	Qty.
	CARBURETOR- (SDC-62)	A-68407-A	1
	Includes:		
1	†SCREW- Valve (#6-32 x 3/16)	64693	2
2	†VALVE- Throttle	67003	1
3	†DIAPHRAGM- Pump	64233	1
4	*GASKET- Pump	67008	1
5	SCREW- Assembly (pump cover)	64694	4
6	COVER- Fuel pump	67002	1
7	†SCREEN- Inlet	64243	1
8	FITTING- Inlet elbow	69365	1
9	SHAFT ASSEMBLY- Choke	67109	1
10	VALVE- Choke	64228	1
11	†SPRING- Choke friction	64238	1
12	†BALL- Choke friction	60051	1
13	†VALVE- Inlet needle	64229	1
14	†SPRING- Metering lever	67005	1
15	†PIN- Metering lever	64244	1
16	†SCREW- Metering lever pin (#4 x 1/4)	64688	1
17	†LEVER- Metering	64245	1
18	*GASKET- Metering diaphragm	64231	1
19	†DIAPHRAGM ASSEMBLY- Metering	64235	1
20	COVER- Metering diaphragm	64224	1
21	SCREW ASSEMBLY	64689	4
22	†PLUG- Welch idle (3/8)	30818	1
23	†PLUG- Welch main (5/16)	65482	1
24	†SPRING- Needle adjusting	64236	2
25	†NEEDLE- High speed	67011	1
26	†NEEDLE- Idle	67004	1
27	SHAFT ASSEMBLY- Throttle	67007	1
28	†SPRING- Throttle return	67006	1
29	RETAINING RING- Throttle shaft	64221	1
30	*†GASKET SET	67019	1
31	REPAIR KIT	67020	1
32	REPAIR KIT- Check valve	65386	1
	Includes:		
	RING	67360	1
	SCREEN	67381	1
	VALVE- Disc. check		1
	SEAT		1

† Denotes Contents of Repair Kit
* Denotes Contents of Gasket Set

**HS-195-A
HS-179-B**

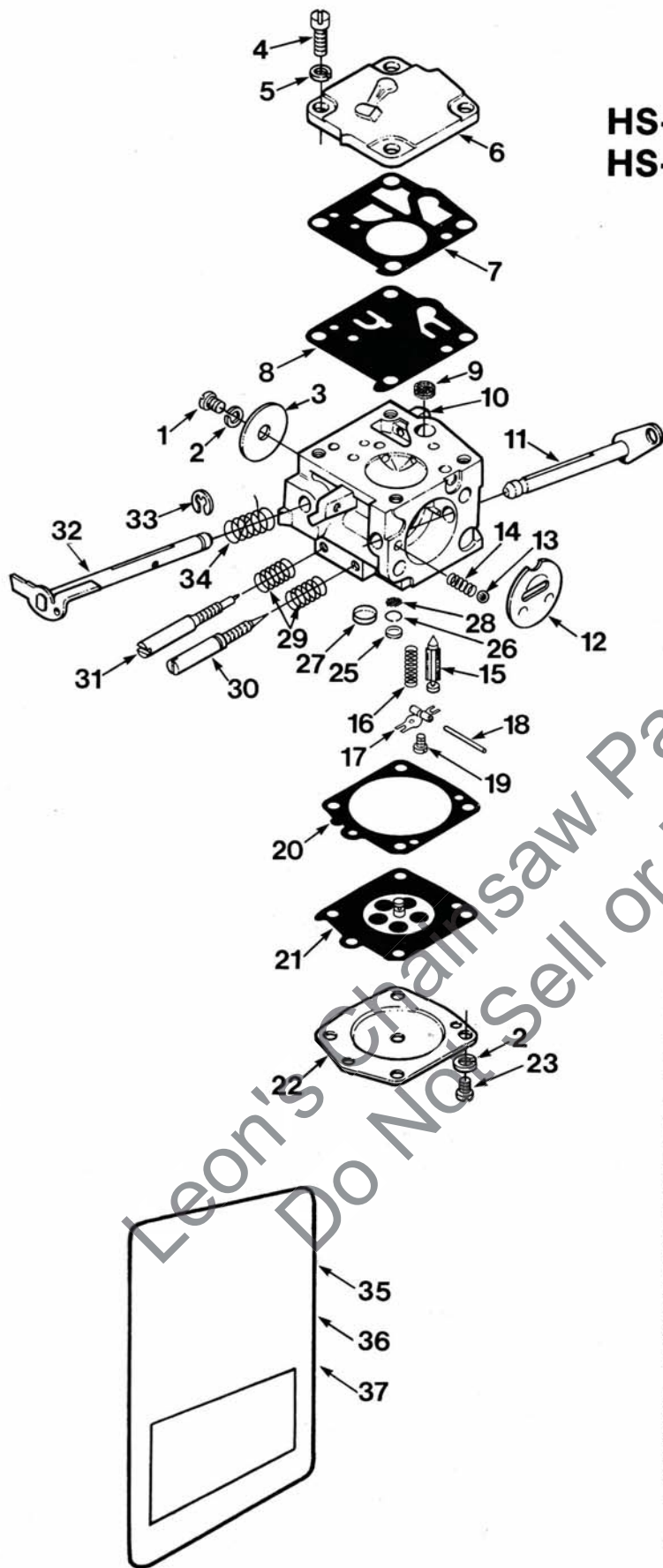


FIGURE 8

No.	Description	Part No.	Qty.	(HS-195-A)	(HS-179-B)
	CARBURETOR (HS-179-B)	A-69647-A	1		
	CARBURETOR (HS-195-A)	A-94162	1		
	Includes:				
1	†SCREW- Rd. hd. (#4-40 x 3/16)	80264	1	1	
2	LOCK WASHER (#4)	83008-1	6	6	
3	SHUTTER- Throttle	25050	1	1	
4	SCREW- Fil hd. (#6-32 x 3/8)	80275	4	4	
5	LOCK WASHER- (#6)	83024	4	4	
6	COVER- Pump	58975	1	1	
7	GASKET- Fuel pump	58981	1	1	
8	†DIAPHRAGM- Fuel pump	58980-R	1	1	
9	†SCREEN	58974	1	1	
10	FITTING- Inlet elbow	69365	1	1	
11	SHAFT & LEVER- Choke	69651	1	1	
12	SHUTTER- Choke	58984	1	1	
13	BALL- Steel (5/32 dia.)	25527	1	1	
14	SPRING- Choke friction	73264	1	1	
15	NEEDLE- Inlet	59717	1	1	
16	†SPRING- Tension	55759	1	1	
17	†LEVER- Inlet valve control	59716	1	1	
18	†PIN- Fulcrum	58977	1	1	
19	†SCREW- Pan hd. (#4-40 x 5/16)	58992	1	1	
20	GASKET- Diaphragm metering	58978	1	1	
21	†DIAPHRAGM	58988	1	1	
22	COVER- Diaphragm	58979	1	1	
23	SCREW- Rd. hd. (#4-40 x 1/4)	80591	4	4	
25	†PLUG- Welch (7/32 dia.)	58994	1		
26	RING- Retaining	57819	1		
27	†PLUG- Welch (11/32 dia.)	58991	1	1	
28	BODY CHANNEL SCREEN	59500	1		
29	†SPRING- Adjusting	73075	2	1	
30	SCREW- Main adjustment	58986	1		
31	SCREW- Idle adjustment	58985	1	1	
32	SHAFT- Throttle & "E" ring	93245	1	1	
	Includes:				
33	† "E" Ring	12684	1	1	
34	†SPRING- Throttle return	59460	1	1	
35	*GASKET SET	67866	1	1	
36	‡DIAPHRAGM & GASKET SET	63711	1	1	
37	REPAIR KIT	67869	1	1	

† Denotes Contents of Repair Kit
* Gasket Set (Includes items 7 and 20)
‡ Diaphragm & Gasket Set (Includes 7, 8, 20 and 21)

TOOLS

WRENCH- Combination	A-23937-B
PLUG- Piston Pin Removal	A-23949
Includes:	
"O" Ring	67900
WRENCH- Socket	68651
WRENCH- Combination	A-24284
SPANNER WRENCH- Clutch	A-23934
Includes:	
PIN	23954
WRENCH- Socket Screw	23528
TOOL- Needle Bearing	23756
PLIERS- Retaining Ring (Piston)	22828
TOOL- Needle Bearing	23757
PLUG- Seal	23758
SLEEVE- Seal Protecting	23759
PULLER- Magneto Rotor	A-23960
SLEEVE- Seal Installation	23800
PLUG- Needle Bearing Installation	23819
SCREWDRIVER	24541

ACCESSORIES

HAND GUARD KIT	A-70944	1
Includes:		
HAND GUARD	NPN	1
SLEEVE	70911	1
WASHER- Belleville (#10)	70788	2
WASHER	58851-2	2
SCREW- Flat Hd (#12-24 x 1.00)	80945	1
NUT- Hex (#12-24)	81225	1
SAFE•T•TIP	A-70790-A	1
Includes:		
SCREW- (#1/4 -20 x 5/8)	82335	1
UNIVERSAL CARRYING CASE	A-68776	1

NOTES

1. HUB & DRUM- Kit A-67090 is available from your dealer to be used with rim sprocket. When ordering specify the sprocket with the desired pitch also.
2. RACE- No. 55584 required with No. 72311 Needle Bearing.
3. A-94212 Muffler Temperature Kit must be used with A-94219 Muffler.
4. For unit with 5/16 - 18 nuts use No. 81196.

NOTES

Leon's Chainsaw Parts & Repair
Do Not Sell or Reproduce

NOTES

R3874YY

Leon's Chainsaw Parts & Repair
Do Not Sell or Reproduce

HOMELITE **TEXTRON**

Homelite Division of Textron Inc.