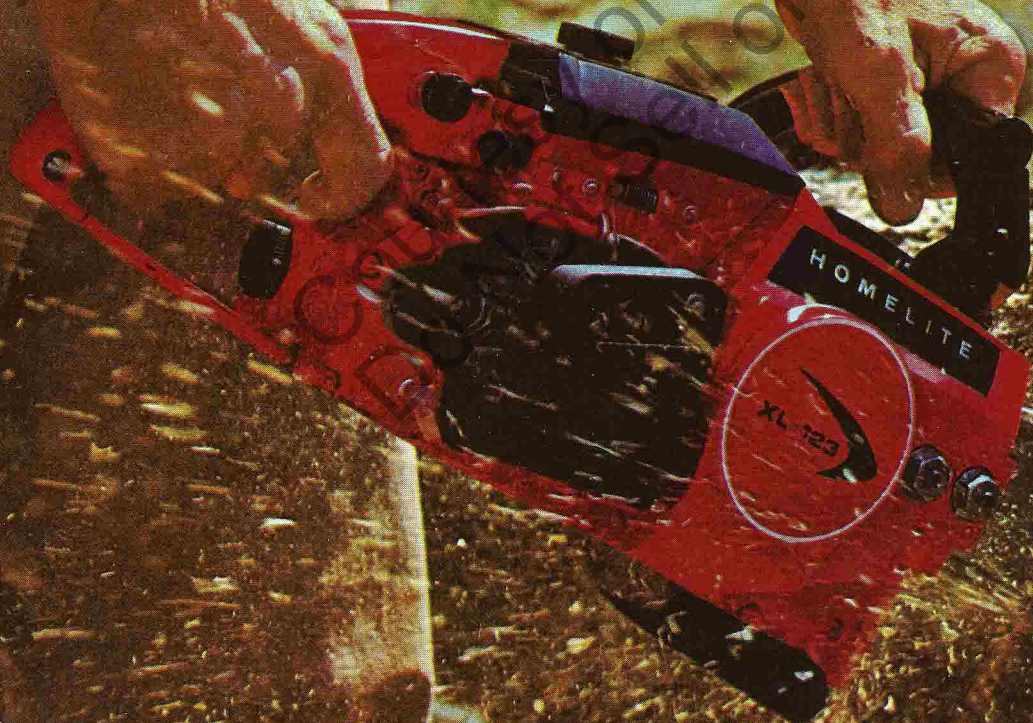
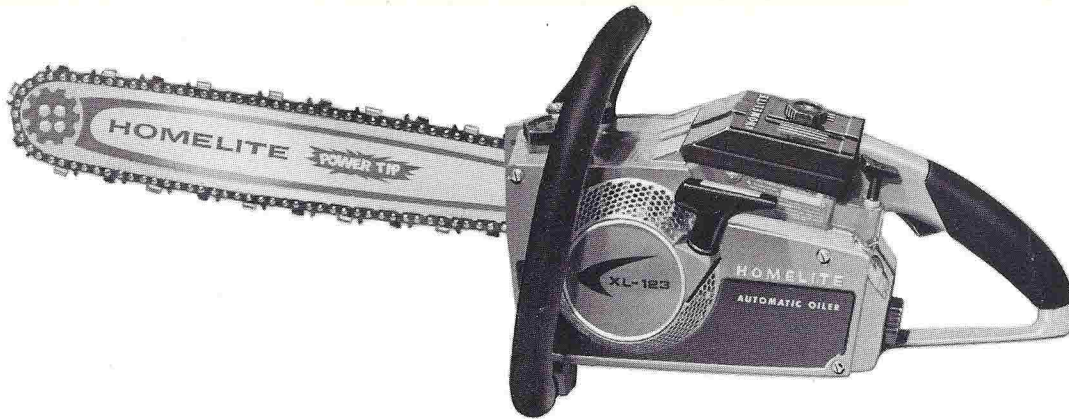


HOMELITE®

CHAIN SAWS

XL-123





ENGINE

Type	HOMELITE two cycle, single cylinder, air cooled loop scavenged, light alloy with Power Boost* Combustion and full flow ram intake porting.
Dry Weight	XL-123: 12½ lbs., (5,7 kg.)
Displacement	3.55 cu. in. (58,2 cm ³)
Bore	1.812 in. (46,0 mm.)
Stroke	1.375 in. (34,9 mm.)
Speed	6,000 rpm. under load
Bearings	Heavy duty ball and needle bearings throughout.
Starting	HOMELITE automatic rewind, heavy duty, compression release, trigger latch.
Clutch	Automatic centrifugal, heavy duty three shoe 3,000 rpm. engaging speed. Engineered to slip at 4,000 rpm. to prevent stalling.
Muffler	HOMELITE'S exclusive Softone* diffuser type.

IGNITION

Magneto	Special HOMELITE high tension, weatherized components. Easy to service.
Timing	24° BTDC.
Breaker Point Setting ..	.015 in. (0,38 mm.)
Coil	Special epoxy impregnated windings heat and vibration resistant. Easily replaceable high tension lead.
Spark Plug	Champion CJ-6, gap .025 in. (0,60 mm.)

CARBURETION AND FUEL

Carburetor Type	Diaphragm type, delivers full power in all positions at all speeds. Integral fuel pump and strainer. Easily accessible external adjustments.
Intake Valve	Pyramid design with four stainless steel reeds. Precision molded Delrin seat.
Air Filter	Washable polyester micro-mesh with integral molded gasket.
Fuel Capacity	23 U.S. Fl. Oz. (0,7 L.)
Fuel Pickup and Filter ..	Flexible pickup with replaceable filter.
Fuel-Oil Mixture	32:1 with Homelite Premium 2-cycle engine oil (SAE 40). 16:1 with Homelite 2-cycle engine oil (SAE 30).
Throttle Control	Trigger in rear handle with trigger latch for convenient operation and easy starts.

GUIDE BAR AND CHAIN

Guide Bars	HOMELITE specially hardened and tempered alloy steel with welded tip for long life, sizes 12", 16", 20", 24". Exclusive HOMELITE Power Tip® sprocket nose type available. Sizes 16", 20".
Chain	Factory fitted with ¾ in. pitch 72D Oregon Chain.
Chain Speed	2,600 ft. per min. under load.
Sprocket	Seven tooth Star Type for smoother drive and long chain life.
Chain Oil Capacity	6.25 U.S. Fl. Oz. (0,19 L.).
Chain Oiling Systems ..	Positive crankshaft driven automatic pump plus separate manual pump.

GENERAL

Handle Bars	Shock absorbing rubber coated handle bar and pistol grip.
Accessories	For Homelite's full line of accessories ask for catalog L-2017. Utility and clearing guide bars available. Heat exchanger for cold weather operation prevents carburetor icing and air filter freezing. XL-123 fits universal carry case A-68210.

XL-123 — CHAIN SAW SPECIFICATIONS

HOMELITE®

A **textron**
DIVISION

PORT CHESTER, NEW YORK, U.S.A. 10573
The World's Largest Chain Saw Manufacturer

• TOP PERFORMANCE

DISPLACEMENT — 3.55 CUBIC INCH
POWER BOOST* COMBUSTION — HOMELITE'S exclusive hemispherical combustion chamber concentrates the fuel air mixture for more complete combustion, greater thermal efficiency, increased power, and air flow ring directs cooling air for cooler running.
FULL FLOW RAM INTAKE PORTING — Computer designed intake ports for full cylinder charging.
HOMELITE CYLINDER — Precision ground for consistent power and faster piston ring seating.

• EASY HANDLING

EASY PULL STARTING — Compression release for easier engine cranking plus trigger latch assure quick easy starts.
RUBBER COATED RADIUS HANDLE BARS — Cushion grips on throttle handle. Located at center of balance for maximum control and comfort.
AUTOMATIC BAR AND CHAIN OILING — Fully automatic positive displacement pump plus manual pump for extra heavy duty cutting, plus new, larger oil reservoir.

*TM of HOMELITE, A division of Textron Inc.