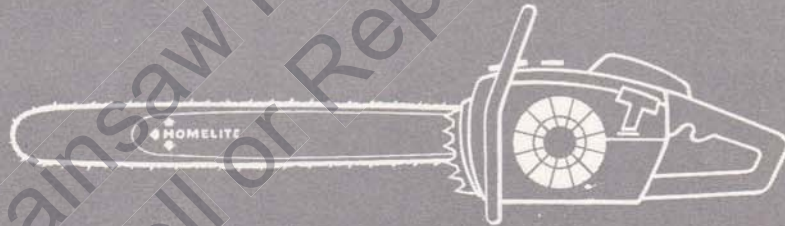


**XL-120
AM**

**PARTS
LIST**



HOMELITE®

CHAIN SAWS

HOMELITE XL-120 AM

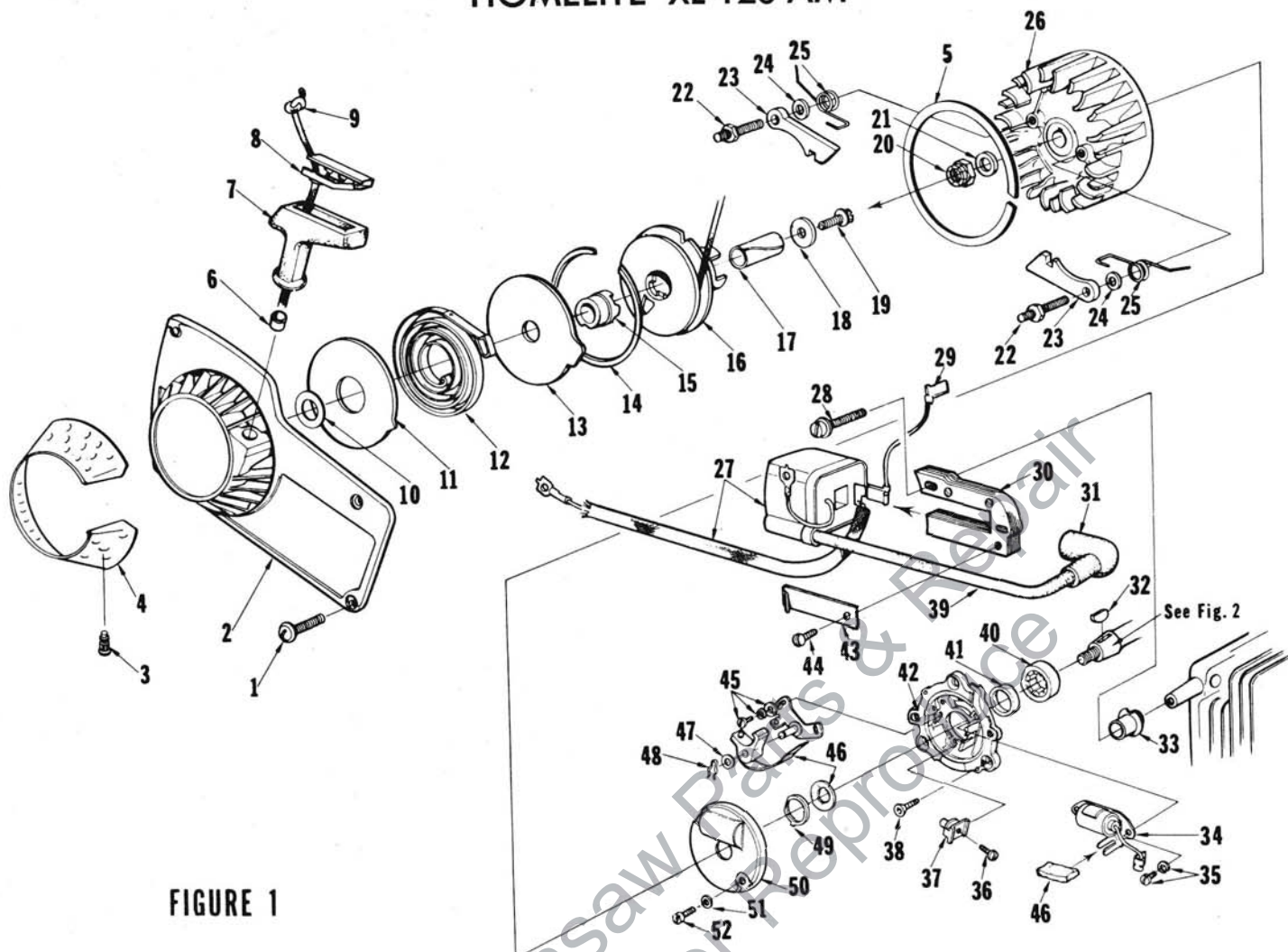


FIGURE 1

No.	Description	Part No.	Qty.	No.	Description	Part No.	Qty.
1	SCREW-hex, 10-32 x 1/2	80648	4	27	COIL-ignition	64091	1
2	HOUSING-fan	A-67192-A	1	28	SCREW-coil core	64021	2
3	Includes: STUD-drive	67191	4	29	LEAD-ground to switch	A-63939	1
4	SCREEN-fan housing	65491	1	30	CORE-coil	54422	1
5	RING-air flow	67222	1	31	TERMINAL-spark plug	A-33055	1
6	BUSHING-starter rope	67177	1	32	KEY-woodruff	75078	1
7	GRIP-starting rope	64155-A	1	33	RETAINER-lead	64301	1
8	INSERT-rope retaining	64154-A	1	34	CONDENSER & CLAMP	64086	1
9	ROPE-starter	63869	1	35	SCREW-condenser clamp	55411	2
10	WASHER	67185	1	36	SCREW-terminal	64090	2
11	SHIELD-spring (inner)	63713	1	37	BLOCK-terminal	64088	1
12	SPRING-rewind	63870	1	38	SCREW-backplate retainer	65321	5
13	SHIELD-spring (outer)	63714	1	39	LEAD-high tension	58966	1
14	RING-shield retaining	63875	1	40	BEARING-roller	67395	1
15	LOCK-spring	64948	1	41	SEAL	58688-A	1
16	PULLEY & CUP ASSY.	A-63952-B	1	42	PLATE-back	63624-1B	1
17	BUSHING-starter post	64374	1	43	CLIP-coil retaining	54423	1
18	WASHER-retaining	63606	1	44	SCREW-coil retaining clip	64090	1
19	SCREW-hex, 10-32 x 1/2	80648	1	45	SCREW-breaker clamp	76421	2
20	NUT-lock, 5/16-24	81112	1	46	POINTS-set w/felt	A-64087	1
21	WASHER-flat, 5/16	84065	1	47	Includes: WASHER-post	28028	1
22	STUD-shoulder	63877	2	48	CLIP-post	28008	1
23	PAWL-starter	64442	2	49	RETAINER-felt	64089	1
24	WASHER-flat	58851	2	50	COVER-breaker box	A-63928	1
25	SPRING-starter pawl	58758-2	2	51	WASHER-flat, #6	84018	2
26	ROTOR-magneto	63637	1	52	SCREW-cover	64085	2

HOMELITE XL-120 AM

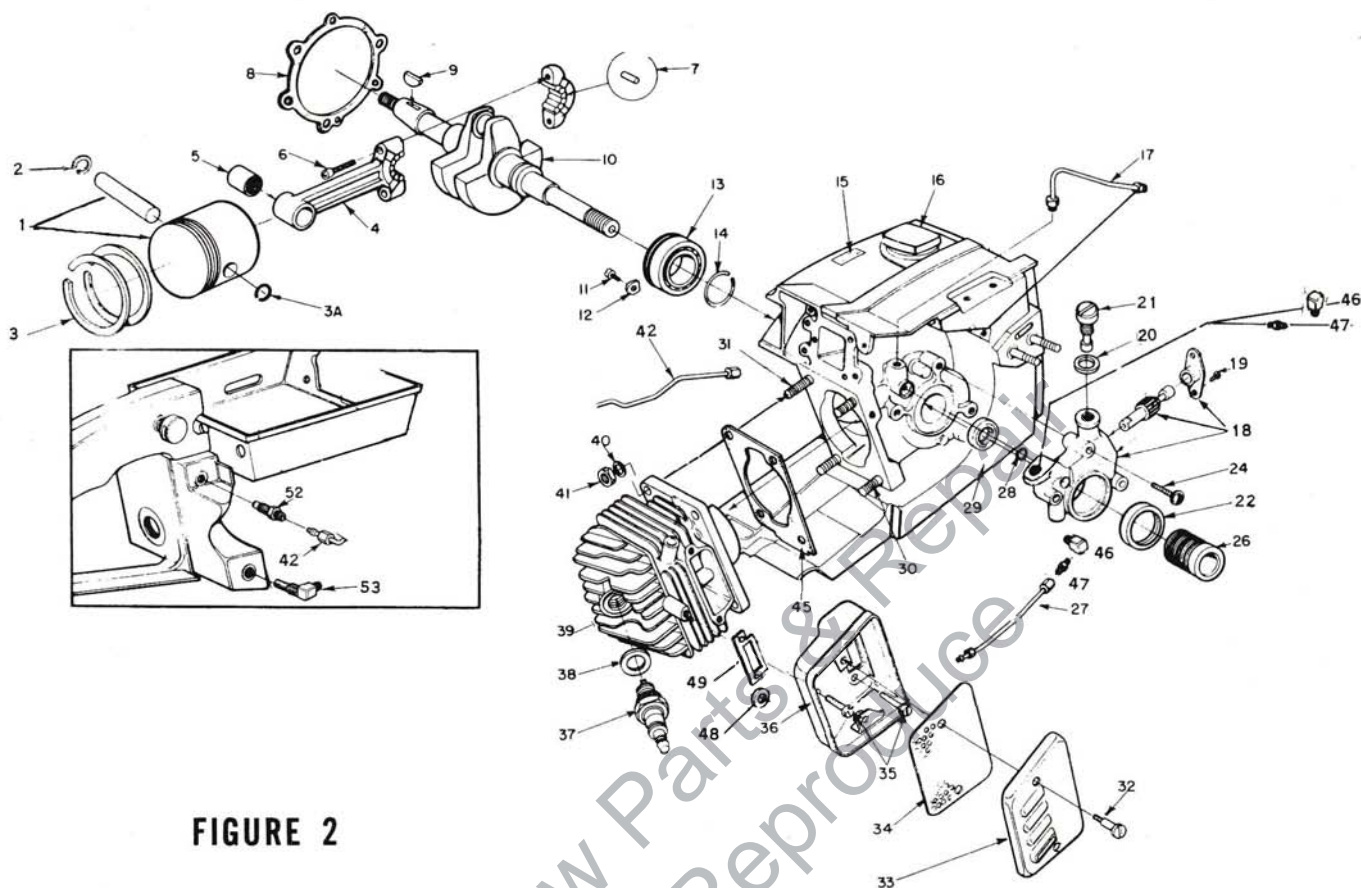


FIGURE 2

No.	Description	Part No.	Qty.	No.	Description	Part No.	Qty.
1	KIT, PISTON	A-121690	1	26	WORM-oil pump	63228	1
2	Includes: RING - Retaining	75120	1	27	LINE-oil	A-121734	1
3	Ring-piston	59436	2	28	"O" RING	59074	1
3A	RING-retaining	120203	1	29	SEAL	58308-A	1
4	ROD-connecting	A67411	1	30	STUD-cylinder (short)	55871	3
5	Includes: BEARING-needle	67408	1	31	STUD-cylinder (long)	63868	1
6	SCREW	80541	2	32	SCREW-shoulder	64133-A	2
7	ROLLER-Needle (set of 31)	A67437	1	33	CAP-muffler	64125-T	1
8	GASKET - crankcase	63361-A	1	34	BAFFLE-muffler	64126	1
9	KEY	75078	1	35	SCREW-hex hd., No. 12 - 24 x 1/2"	80821	3
10	CRANKSHAFT	67186-1	1	36	BODY-muffler	A-64130-1T	1
11	SCREW-bearing retainer	59704	2	37	SPARK PLUG C-J 6	63547	1
12	WASHER - special	63905	2	38	Includes: GASKET	25038	1
13	BEARING - ball	63865	1	39	CYLINDER	67124	1
14	RING - retaining	58319-A	1	40	WASHER - lock 1/4"	83009	4
16	CAP-fuel filler	67501-T	1	41	NUT-hex, 1/4 - 28	81065-2	4
17	LINE-oil (Outer)	A-63919	1	42	LINE ASSY. Oil	A-121733	1
18	Pump-Automatic oil	A-121751	1	45	GASKET-cylinder	65829	1
19	Includes: Screw, Pan. hd., #4-40x1/4	80919	2	46	CONNECTOR Elbow 90%	31734	1
20	Gasket, cam screw	59736	1	47	FITTER Straight	65696	1
21	Screw, cam	64102-A	1	48	WASHER Flat	84008	1
22	Seal, Felt	64393	1	49	Gasket Muffler	121474	1
24	SCREW-pan hd., No. 8-32 x 7/8	80568	3	52	VALVE-check	A65948-T	1
				53	FILTER, Oil	A-64741-T	1

SPECIAL TOOLS (available on order)

A-23937-B	WRENCH-combination	23846-2	ANVIL-roller bearing disassembly	A-24057	BEARING REMOVER- (back plate)
22820-5	COLLAR-bearing installation (bearing to shaft)	A-23934	SPANNER-clutch	24076	SLEEVE-seal protection (crankcase side)
22828	PLIERS-retaining ring	A-23949	TOOL-piston pin removal	24230	DRIVER-hand, pozidriv
23136-1	SLEEVE-bearing and shaft installation	A-23960	BRACKET-rotor removal	24173	DRIVER-check valve installation
23528	WRENCH-socket screw (connecting rod)	23972	SLEEVE-seal installation	A-23841-A	WRENCH-insert
23756	PLUG-needle bearing (connecting rod)	24006-2	PLATE-shaft alignment	24304	BIT-pozidriv No. 2
23759	SLEEVE-seal protection (back plate)	A-24051	JACKSCREW (bearing to shaft to crankcase)	ACCESSORIES	
		24054	PLUG-seal assembly (crankcase)	65543-1	HEAT EXCHANGER
		24055	PLUG-bearing and seal assembly (back plate)	PAINT	
				23475	SPRAY CAN-red paint

ALWAYS FURNISH MODEL AND SERIAL NUMBER WHEN ORDERING PARTS.

HOMELITE XL-120 AM

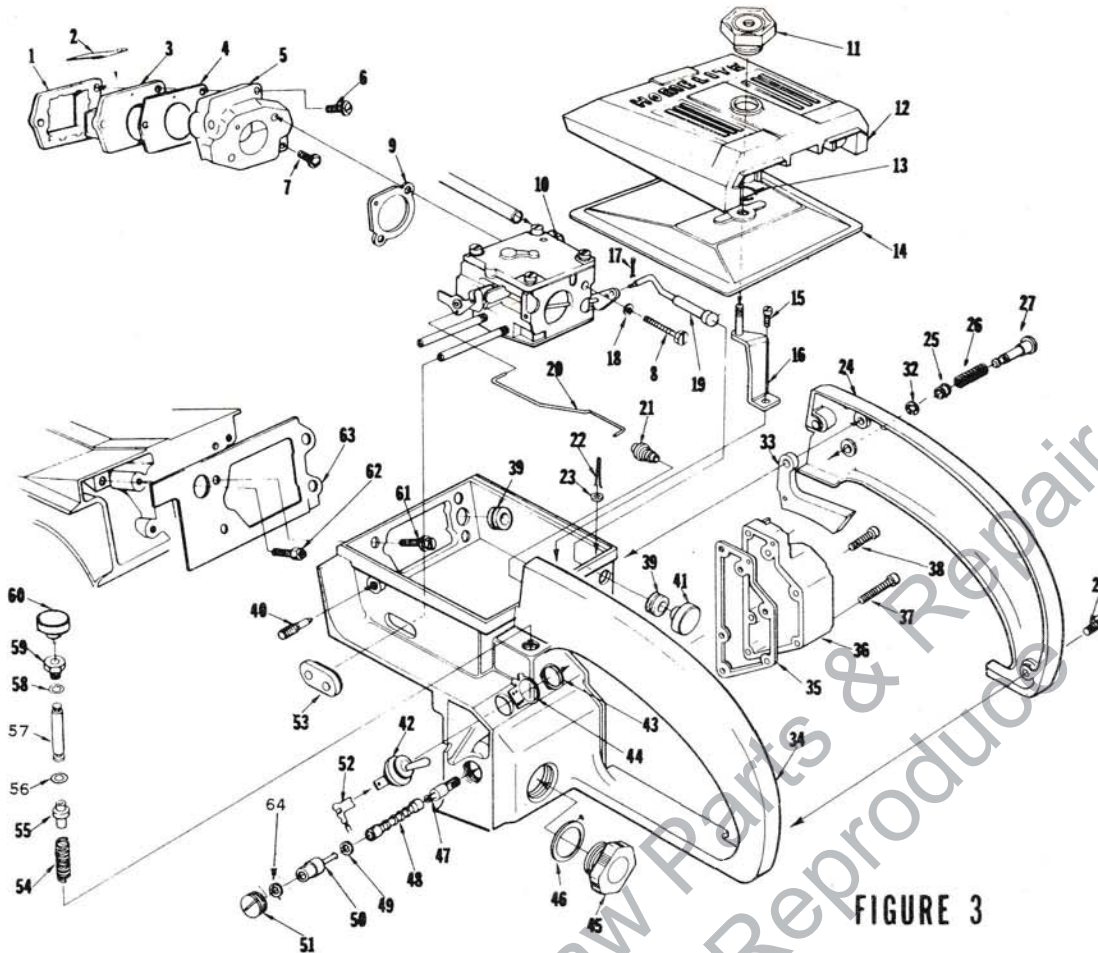


FIGURE 3

No.	Description	Part No.	Qty.	No.	Description	Part No.	Qty.
1	Retainer-reed valve	64253-T	1	33	TRIGGER-throttle	63212-A	1
2	REED-valve	59678	4	34	HANDLE-throttle	A-67697-AT	1
3	SEAT-reed valve	64252-T	1	35	Includes: GASKET-oil tank	67265	1
4	GASKET-reed valve seat	64266	1	36	COVER-oil tank	67138-3	1
5	MANIFOLD-intake	A64220-1A	1	37	SCREW-fil, 8-32 x 1 5/8	82153	3
6	Includes: SCREW-pan, 8-32 x 1 1/4	82174	2	38	SCREW-fil 8-32 x 3/4	82156	3
7	SCREW-pan, 8-32 x 1	82173	1	39	GROMMET	64862	2
8	SCREW-hex, 10 - 32 x 1 7/8	82179	2	40	SCREW-idle adjustment	65522	1
9	GASKET-carburetor	67631	1	41	BUTTON-choke	57289-1	1
10	CARBURETOR Walbro SDC 21	A-67681	1	42	SWITCH	A-63938	1
11	NUT-cover mounting	A-67627	1	43	Includes: NUT	72084-A1	1
12	COVER-air filter	63183-2	1	44	PLATE- "ON-off"	63910	1
13	RING-retaining	58319-A	1	45	CAP-oil (vented)	A-65284-T	1
14	FILTER ELEMENT-air	A-63955-A	1	46	Includes: "O" RING	65133	1
15	SCREW-hex, 12-24 x 1/2	80821	1	47	FILTER-oil	A-64293	1
16	BRACKET-air filter cover	A-63576	1	48	LINE-flexible oil	64356	1
17	PIN-cotter	86324	1	49	GASKET	59736	1
18	WASHER-lock No. 10	83046	2	50	FITTING-check valve	A-63936	1
19	ROD-choke	A-63942-1	1	51	SCREW-set	63113	1
20	ROD-throttle	63896-1A	1	52	LEAD-ground	A-63939	1
21	BOOT-throttle rod	67634	1	53	GROMMET- "Hi-Lo"	58858	1
22	PIN-cotter	86301	1	54	SPRING-plunger	65080	1
23	WASHER-felt	63290	1	55	PLUNGER-oil pump	65081-AT	1
24	COVER-throttle handle	63599-3	1	56	"O" RING	58406	1
25	BUSHING-throttle lock	59064	1	57	ROD plunger	A-121658	1
26	SPRING-throttle lock	58405	1		Includes:		
27	PIN-throttle lock	58924-1	1	58	"O" RING	59074	1
28	SCREW-pan, 8-32 x 1/2	80560	2	59	NUT-plunger	121293	1
32	RING-retaining	58409	1		BUTTON - oil pump x 5/8	57289-1	1
				60	SCREW-hex, 12-24 x 5/8	80676	4
				61	VENT-fuel tank	A65608	1
				62	GASKET-throttle handle	64267-T	1
				63	GROMMET	64474	1
				64			

ALWAYS FURNISH MODEL AND SERIAL NUMBER WHEN ORDERING PARTS.

HOMELITE XL-120 AM

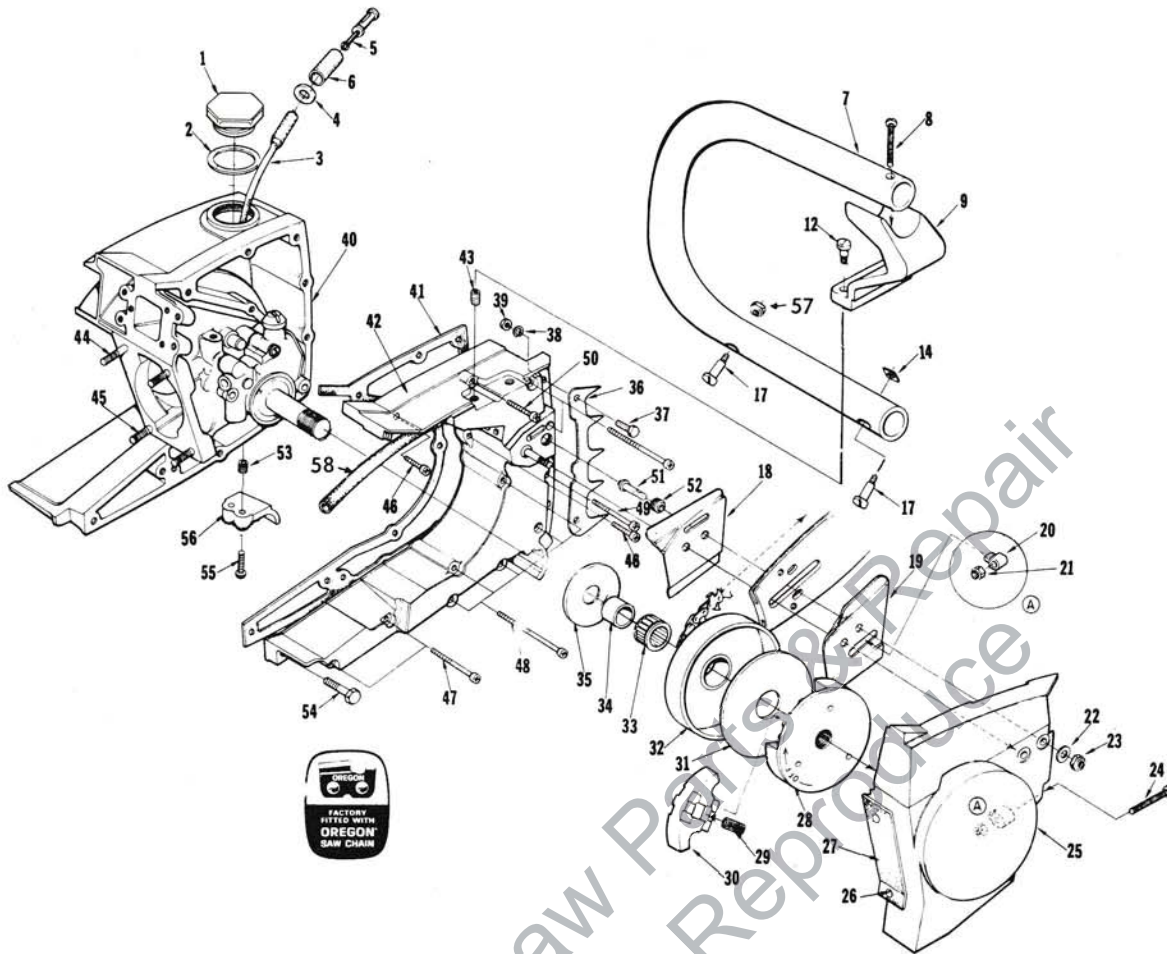
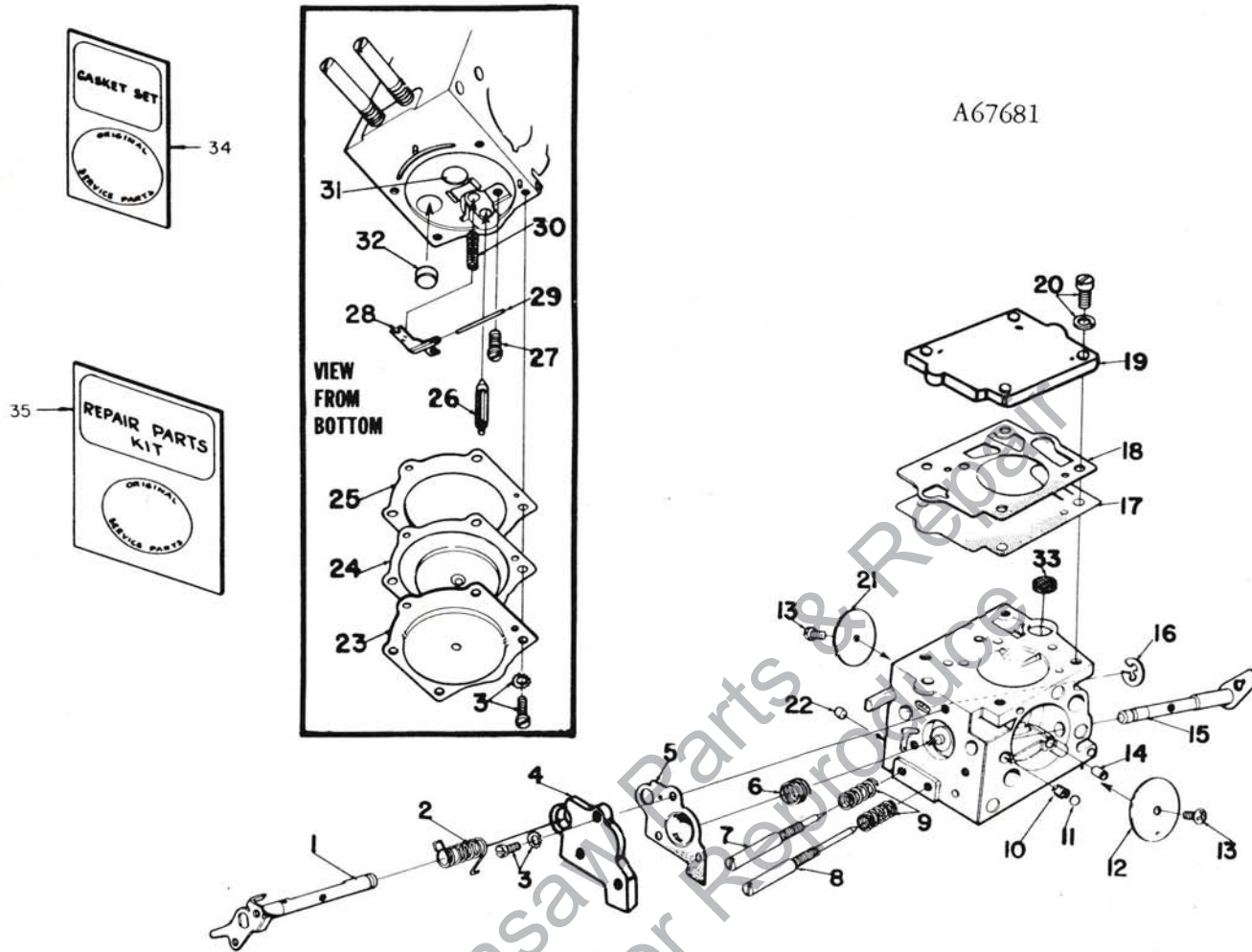


FIGURE 4

No.	Description	Part No.	Qty.	No.	Description	Part No.	Qty.
1	CAP-fuel filler	A-65283-T	1	36	BUMPER-spiked (optional)	A-64722	1
2	INCLUDES: GASKET	58957	1	37	Includes: SCREW-hex, 12-24 x 5/8	80676	2
3	LINE-fuel	63544	1	38	WASHER-lock No. 12	83056	2
4	WASHER	64182	1	39	NUT-hex, 12-24	81068	2
5	FILTER-fuel	A-63920	1	40	CRANKCASE & TANK	A-64797-D	1
6	INCLUDES: Filter-felt	64083-1	1		INCLUDES: PIN-dowel	71430	2
7	HANDLE Bar	121473-1	1		(Not shown)		
8	SCREW-Fill/HD 10-32 x 1 1/4	80249	1		PIN-dowel (not shown)	65365	2
9	BRACKET-handle bar	A-65666-T	1		SEAL (see Fig. 2, No. 29)	58308-A	1
12	SCREW-shoulder	64613-A	2	41	GASKET-fuel tank	65364	1
14	PLATE-handle bar	65670	1	42	COVER-fuel tank	A-65576-A	1
17	SCREW-shoulder	64754	2		INCLUDES: (not shown)		
18	PLATE-guide bar (inner)	63638-B	1		GASKET-check valve	58338	1
19	PLATE-guide bar (outer)	63639-A	1		CAP-check valve	58339-1	1
20	PIN-bar adjusting	65768-1	1	43	INSERT-taplock	72489	3
21	NUT-lock, 10-32	81211	1	44	STUD-cylinder	63868	1
22	WASHER-flat, 5/6	84032	2	45	STUD-cylinder	55871	3
23	NUT-hex, 5/16 - 18	81196	2	46	SCREW-fill 8-32 x 15/16	82151	2
24	SCREW-guide bar adjusting	65944	1	47	SCREW-fil 8-32 x 1 7/8	82154	2
25	COVER-drivecase	A-64620-1BT	1	48	SCREW-fil 8-32 x 2 3/16	82155	7
26	INCLUDES: RIVET-oval head	85016	2	49	SCREW-fil 8-32 x 1-7/8	82154	1
27	SHIELD-sawdust	64618	1	50	SCREW-fil 8-32 x 1-1/4	82152	1
28	PLATE-clutch	64904-1	1	51	STUD - guide bar	63861	2
29	SPRING-clutch	65842	3	52	INSERT-threaded	59896-T	2
30	SHOE-clutch	64569-3	1	53	INSERT-taplock	72489	2
31	COVER-clutch	63671	1	54	SCREW-hex, 12-24 x 7/8	80891	1
32	SPROCKET & DRUM	A-64908	1	55	SCREW-pan HD. 10-32 x 5/8	80572	2
33	BEARING-Cage	64333	1	56	STOP-handle bar	67506-2T	2
34	RACE-inner	63990	1	57	NUT hex. Flexlock (10-32)	81109-2	1
35	WASHER-thrust (inner)	63860	1	58	TUBING Sealing	64151	1

HOMELITE XL-120 AM

A67681



WALBRO SDC-21

No.	Description	Part No.	Qty.	No.	Description	Part No.	Qty.
1	THROTTLE SHAFT ASSEMBLY	64225	1	19	COVER-fuel pump	67002	1
2	SPRING-throttle return	67006	1	20	SCREW-fuel pump cover	64694	4
3	SCREW ASSEMBLY	64689	7	*21	VALVE-throttle	67700	1
4	COVER-accelerator pump	67187	1	22	PLUG-limiting	64692	1
5	DIAPHRAGM-accelerator pump	67188	1	23	COVER	64224	1
6	SPRING-accelerator pump	64240	1	24	METERING DIAPHRAGM ASSEMBLY	64235	1
7	NEEDLE-idle	64241	1	25	GASKET-metering diaphragm	64231	1
8	NEEDLE-high speed	64242	1	26	VALVE-inlet needle	64229	1
9	SPRING-needle adjusting	64236	2	27	SCREW-metering lever pin	64688	1
10	SPRING-choke friction	64238	1	28	LEVER-metering	64245	1
11	BALL-choke friction	60051	1	29	PIN-metering lever	64244	1
12	VALVE-choke	64228	1	30	SPRING-metering lever	64237	1
13	SCREW-valve	64693	2	31	PLUG-welch (main)	65482	1
14	JET-idle air	64690	1	32	PLUG-welch (idle)	65481	1
15	CHOKE SHAFT ASSEMBLY	64227	1	33	SCREEN-fuel inlet	64243	1
16	RING-throttle shaft retaining	64221	1	34	GASKET SET	67019	1
17	DIAPHRAGM-fuel pump	64233	1	35	REPAIR KIT	67197	1
18	GASKET-fuel pump	67008	1		REPAIR KIT-check valve	65386	1

∕Included in Repair Kit 67197

*Denotes new parts.

manufactured by

TERRY INDUSTRIES

A DIVISION OF **Textron** CANADA, LIMITED

180 Labrosse, Ave., Pointe Claire, Que.

PART NO. 121472

5-70

