

**CHAIN SAW
PARTS LIST**

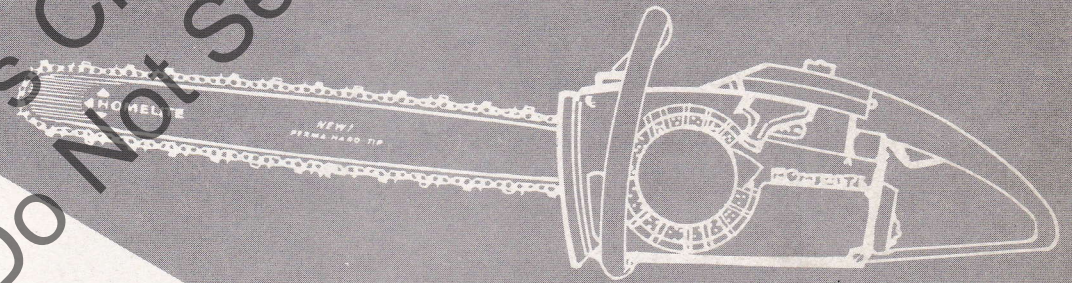
XL-113E

XL-114E

XL-122E

HOMELITE®

*Leon's Chainsaw Parts & Repair
Do Not Sell or Reproduce*



Part No. 24360

HOMELITE XL CHAIN SAWS

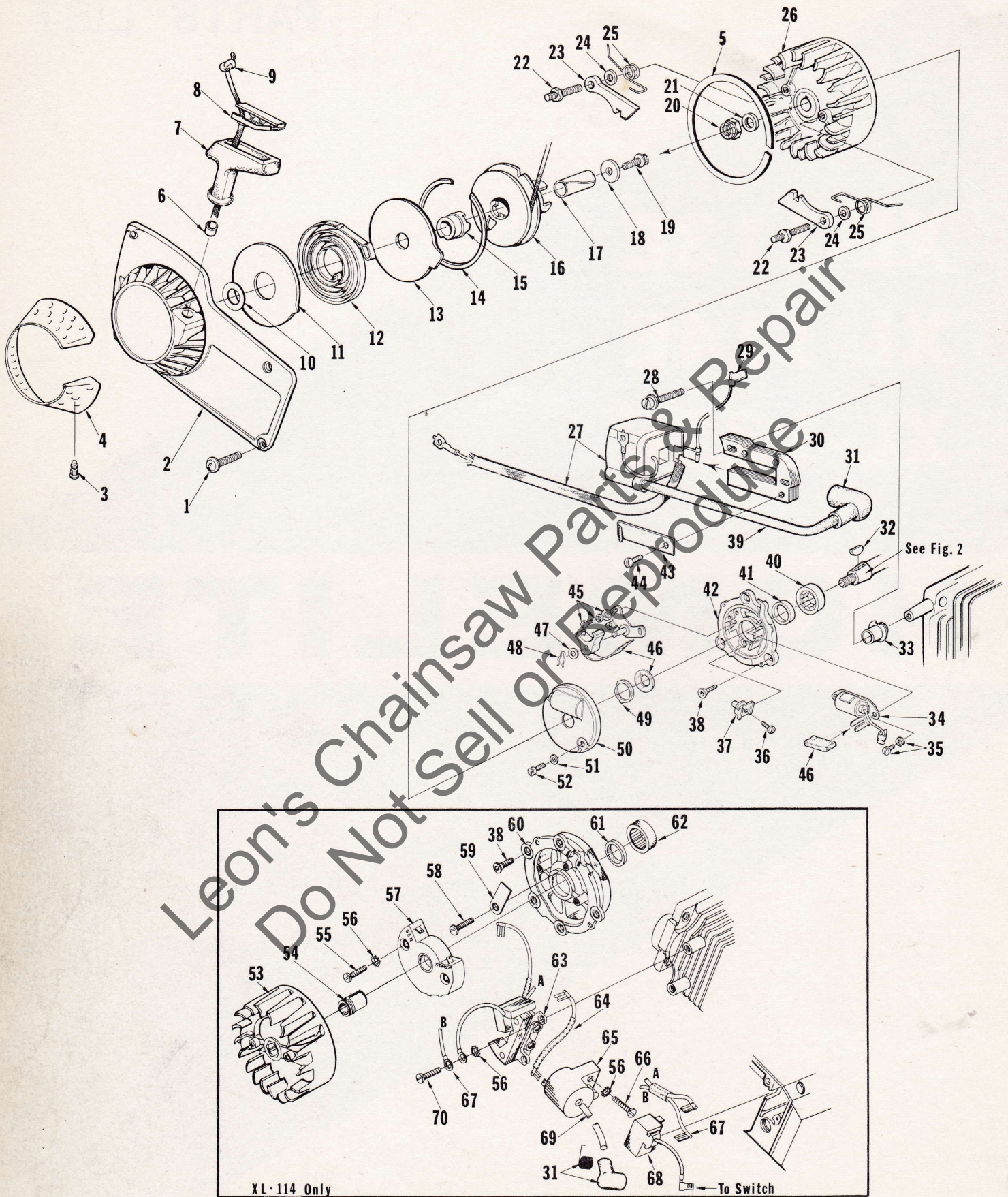


FIGURE 1

HOMELITE XL CHAIN SAWS

No.	Description	Part No.	XI-113E	XI-114E	XI-122E	Qty.
1	SCREW-hex, 8-32 x 1/2	80983	x	x	x	4
* 2	HOUSING-fan	A-67192-A	x	x	x	1
3	Includes: STUD-drive	67191	x	x	x	4
4	SCREEN-fan housing	65491	x	x	x	1
* 5	RING-air flow	67222	x	x	x	1
6	BUSHING-starter rope	67177	x	x	x	1
7	GRIP-starting rope	64155	x	x	x	1
8	INSERT-rope retaining	64154	x	x	x	1
9	ROPE-starter	63869	x	x	x	1
*10	WASHER	67185	x	x	x	1
11	SHIELD-spring (inner)	63713	x	x	x	1
12	SPRING-rewind	63870	x	x	x	1
13	SHIELD-spring (outer)	63714	x	x	x	1
14	RING-shield retaining	63875	x	x	x	1
15	LOCK-spring	64948	x	x	x	1
16	PULLEY & CUP ASSY.	A-63952-A	x	x	x	1
17	BUSHING-starter post	64374	x	x	x	1
18	WASHER-retaining	63606	x	x	x	1
19	SCREW-hex, 10-32 x 1/2	80648	x	x	x	1
20	NUT-lock, 5/16-24	81112	x	x	x	1
21	WASHER-flat, 5/16	84065	x	x	x	1
22	STUD-shoulder	63877	x	x	x	2
23	PAWL-starter	64442	x	x	x	2
24	WASHER-flat	58851	x	x	x	2
25	SPRING-starter pawl	58758-2	x	x	x	2
26	ROTOR-magneto	68637	x	x	x	1
27	COIL-ignition	64091	x	x	x	1
28	SCREW-coil core	64021	x	x	x	2
29	LEAD-ground to switch	A-63939	x	x	x	1
30	CORE-coil	54422	x	x	x	1
31	TERMINAL-spark plug	A-33055	x	x	x	1
32	KEY-woodruff	75073	x	x	x	1
33	RETAINER-lead	64301	x	x	x	1
34	CONDENSER & CLAMP	64086	x	x	x	1
35	SCREW-condenser clamp	55411	x	x	x	2
36	SCREW-terminal	64090	x	x	x	2
37	BLOCK-terminal	64088	x	x	x	1
38	SCREW-backplate retainer	65321	x	x	x	5
39	LEAD-high tension	58966	x	x	x	1
*40	BEARING-roller	67395	x	x	x	1
41	SEAL	58688-A	x	x	x	1
*42	PLATE-back	63624-1B	x	x	x	1
43	CLIP-coil retaining	54423	x	x	x	1
44	SCREW-coil retaining clip	58872	x	x	x	1
45	SCREW-breaker clamp	76421	x	x	x	2
46	POINTS-set w/felt	A-64087	x	x	x	1
47	Includes: WASHER-post	28028	x	x	x	1
48	CLIP-post	28008	x	x	x	1
49	RETAINER-felt	64089	x	x	x	1
50	COVER-breaker box	A-63928	x	x	x	1
51	WASHER-flat, #6	84018	x	x	x	2
52	SCREW-cover	64085	x	x	x	2
*53	ROTOR-magneto	67284	x			1
54	CAP-dust	64423	x			1
*55	SCREW-pan, 8-32 x 5/8	82177	x			2
56	WASHER-lock, #8	83106	x			6
*57	MODULE-ignition	67283	x			1
58	SCREW-pan, 6-32 x 5/16	80605	x			1
*59	CLAMP-condenser lead	67285	x			1
*60	PLATE-back	A-67287	x			1
61	Includes: SEAL	58688-A	x			1
*62	BEARING-roller	67395	x			1
*63	CORE & COIL	67277	x			1
*64	LEAD-transformer	67483	x			1
*65	TRANSFORMER	67275	x			1
66	SCREW-fil, 8-32 x 7/8	80183	x			2
*67	LEAD-condenser	67280	x			1
*68	CONDENSER	67281	x			1
*69	LEAD-high tension	67484	x			1
70	SCREW-pan, 8-32 x 3/4	82178	x			2

*Denotes new parts

ALWAYS FURNISH MODEL AND SERIAL NUMBER WHEN ORDERING PARTS.

HOMELITE XL CHAIN SAWS

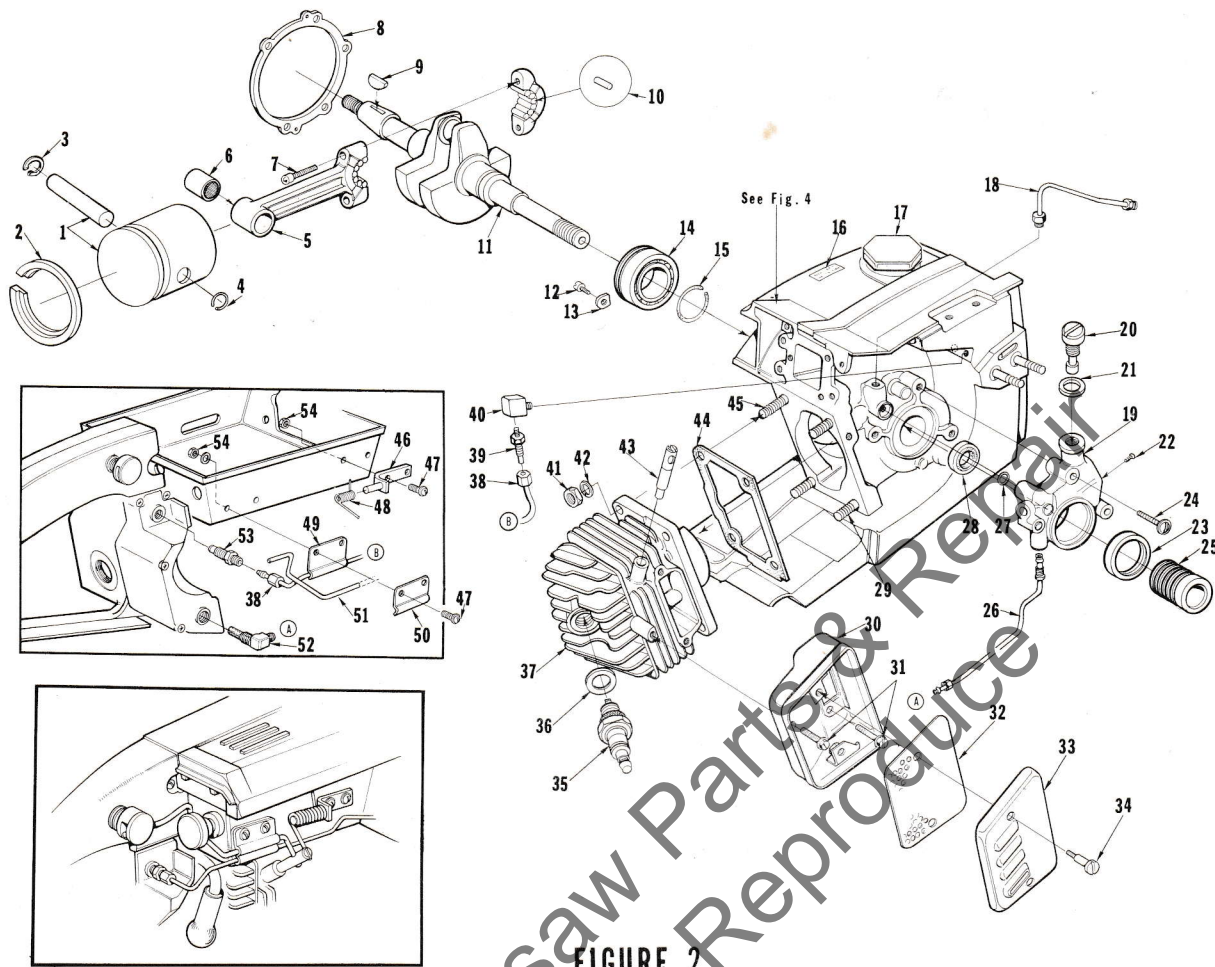


FIGURE 2

No.	Description	Part No.	XL-113E	XL-114E	XL-122E	Qty.	No.	Description	Part No.	XL-113E	XL-114E	XL-122E	Qty.
* 1	PISTON & PIN	A-67696	x	x	x	1	30	BODY-muffler	A-64130	x	x	x	1
* 2	Includes: PISTON RING-"L" shape	67340	x	x	x	1	31	SCREW-hex, 12-24 x 1/2	80821	x	x	x	3
3	RING-retaining	75120	x	x	x	1	32	BAFFLE-muffler	64126	x	x	x	1
4	RING-piston pin retaining	64813	x	x	x	1	33	CAP-muffler	64125	x	x	x	1
* 5	ROD-connecting	A-67411	x	x	x	1	34	SCREW-shoulder	64133-A	x	x	x	2
* 6	Includes: BEARING-needle	67408	x	x	x	1	35	SPARK PLUG	63547-S	x	x	x	1
7	SCREW	80889	x	x	x	2	36	Includes: GASKET	25038	x	x	x	1
* 8	GASKET-crankcase	63361-A	x	x	x	1	*37	CYLINDER	A-64542-2A	x			1
9	KEY-woodruff	75078	x	x	x	1	*	CYLINDER	A-67189-1		x		1
*10	ROLLER-needle (set of 31)	A-67437	x	x	x	1	*	CYLINDER	64405-1			x	1
11	CRANKSHAFT	63204-1	x	x	x	1	38	LINE-oil (manual)	A-67079	x	x	x	1
12	SCREW-bearing retainer	59704	x	x	x	2	39	FITTING-straight	65696	x	x	x	1
13	WASHER-special	63905	x	x	x	2	40	CONNECTOR-elbow	31734	x	x	x	1
14	BEARING-ball	63865-S	x	x	x	1	41	NUT-hex, 1/4-28	81065-2	x	x	x	4
15	RING-retaining	58319-A	x	x	x	1	42	WASHER-lock, 1/4	83009	x	x	x	4
16	DECAL	64144	x	x	x	1	*43	PIN-compression release	A-67482	x	x		1
*17	CAP-fuel filler	A-67501	x	x	x	1	44	GASKET-cylinder	65829	x	x	x	1
18	LINE-oil (auto. upper)	A-63919	x	x	x	1	45	STUD-cylinder (long)	63868	x	x	x	1
19	PUMP-automatic oil	A-67023	x	x	x	1	46	PIVOT PIN & BRACKET ASSY.	A-64656-2	x	x		1
20	Includes: SCREW-cam	64102-A	x	x	x	1	47	SCREW-pan, 6-32 x 3/8	80571		x	x	4
21	GASKET	59736	x	x	x	1		SCREW-pan, 6-32 x 3/8	80571			x	2
22	SCREW-pan, 4-40 x 1/4	80919	x	x	x	2	48	SPRING-relief valve	64653	x	x		1
23	SEAL-felt	64393	x	x	x	1	*49	CLAMP-oil	65949-2	x	x	x	1
24	SCREW-pan, 8-32 x 7/8	80568	x	x	x	3	50	CLAMP-lever	64655-2	x	x		1
25	WORM-oil pump	63228	x	x	x	1	51	LEVER-relief valve	64654-B	x	x		1
26	LINE-oil (auto. lower)	A-63947	x	x	x	1	52	FILTER-oil	A-64741	x	x	x	1
27	"O" RING	90872	x	x	x	1	*53	VALVE-check	A-65948	x	x	x	1
28	SEAL	58308-A	x	x	x	1	54	NUT-flexlock, 6-32	81126	x	x		4
29	STUD-cylinder (short)	55871	x	x	x	3		NUT-flexlock, 6-32	81126			x	2

*Denotes new parts.

HOMELITE XL CHAIN SAWS

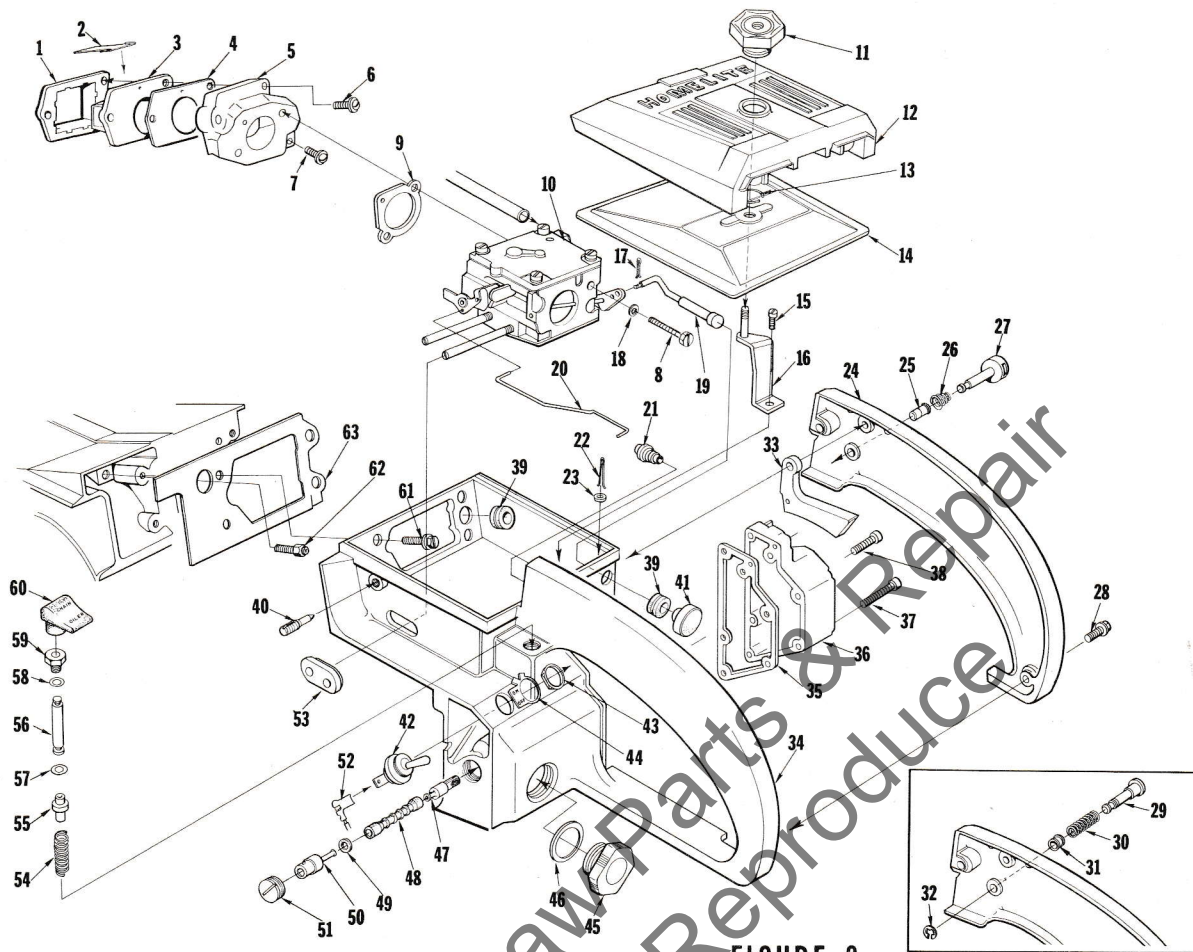


FIGURE 3

No.	Description	Part No.	XL-113E	XL-114E	XL-122E	Qty.	No.	Description	Part No.	XL-113E	XL-114E	XL-122E	Qty.
1	RETAINER-reed valve	64258	x	x	x	1	*34	HANDLE-throttle	A-67697	x	x	x	1
2	REED-valve	59678-A	x	x	x	4	*	HANDLE-throttle	A-67698		x		1
3	SEAT-reed valve	64252	x	x	x	1		Includes: RIVET-accordion(not shown)	65889	x	x	x	2
4	GASKET-reed valve seat	64266	x	x	x	1	*35	GASKET-oil tank	67265	x	x	x	1
*5	MANIFOLD-intake	A-67502	x	x	x	1	*36	COVER-oil tank	67138-3	x	x	x	1
*6	Includes: SCREW-pan, 8-32 x 1 1/4	82174	x	x	x	2	37	SCREW-fil, 8-32 x 1 5/8	82153	x	x	x	3
*7	SCREW-pan, 8-32 x 1	82173	x	x	x	1	38	SCREW-fil, 8-32 x 3/4	82156	x	x	x	3
*8	SCREW-hex, 10-32 x 1 7/8	82179	x	x	x	2	39	GROMMET	64862	x	x	x	2
*9	GASKET-carburetor	67631	x	x	x	1	40	SCREW-idle adjustment	65522	x	x	x	1
*10	CARBURETOR	A-67681	x	x	x	1	41	BUTTON-choke	57289-1	x	x	x	1
*11	NUT-cover mounting	A-67174	x	x	x	1	42	SWITCH	A-63938	x	x	x	1
12	COVER-air filter	63138-2	x	x	x	1	43	Includes: NUT	72084-A1	x	x	x	1
13	RING-retaining	58319-A	x	x	x	1	44	PLATE-"On-Off"	63910	x	x	x	1
14	FILTER ELEMENT-air	A-63955-A	x	x	x	1	45	CAP-oil (vented)	A-65284	x	x	x	1
15	SCREW-hex, 12-24 x 1/2	80821	x	x	x	1	46	Includes: "O" RING	65133	x	x	x	1
16	BRACKET-air filter cover	A-63576	x	x	x	1		VALVE-vent (not shown)	63718	x	x	x	1
17	PIN-cotter	86324	x	x	x	1	47	FILTER-oil (manual)	A-64293	x	x	x	1
18	WASHER-lock #10	83046	x	x	x	2	48	LINE-flexible oil	64356	x	x	x	1
19	ROD-choke	A-63942-1	x	x	x	1	49	GASKET	59736	x	x	x	1
20	ROD-throttle	63896-1	x	x	x	1	50	FITTING-check valve	A-63936	x	x	x	1
21	BOOT-throttle rod	58348	x	x	x	1	51	SCREW-set	63113	x	x	x	1
22	PIN-cotter	86301	x	x	x	1	52	LEAD-ground	A-63939	x	x	x	1
23	WASHER-felt	63290	x	x	x	1	53	GROMMET-"Hi-Lo"	58858	x	x	x	1
*24	COVER-throttle handle	63599-3	x	x	x	1	54	SPRING-plunger	65080	x	x	x	1
25	BUSHING-throttle lock	64646	x	x	x	1	55	PLUNGER-oil pump	65081	x	x	x	1
26	SPRING-throttle lock	64677	x	x	x	1	56	ROD-plunger	A-65199	x	x	x	1
27	PIN-throttle lock	65592	x	x	x	1	57	Includes: "O" RING	58406	x	x	x	1
28	SCREW-pan, 8-32 x 1/2	80560	x	x	x	2	58	"O" RING	90872	x	x	x	1
29	PIN-throttle lock	58924-1				1	59	NUT-plunger	65082	x	x	x	1
30	SPRING-throttle lock	58405				1	*60	BUTTON-oil pump	67386	x	x	x	1
31	BUSHING-throttle lock	59064				1	61	SCREW-hex, 12-24 x 5/8	80676	x	x	x	4
32	RING-retaining	58409				1	62	VENT-fuel tank	A-64311	x	x	x	1
33	TRIGGER-throttle	63212-A	x	x	x	1	63	GASKET-throttle handle	64267	x	x	x	1

*Denotes new parts.

ALWAYS FURNISH MODEL AND SERIAL NUMBER WHEN ORDERING PARTS.

HOMELITE XL CHAIN SAWS

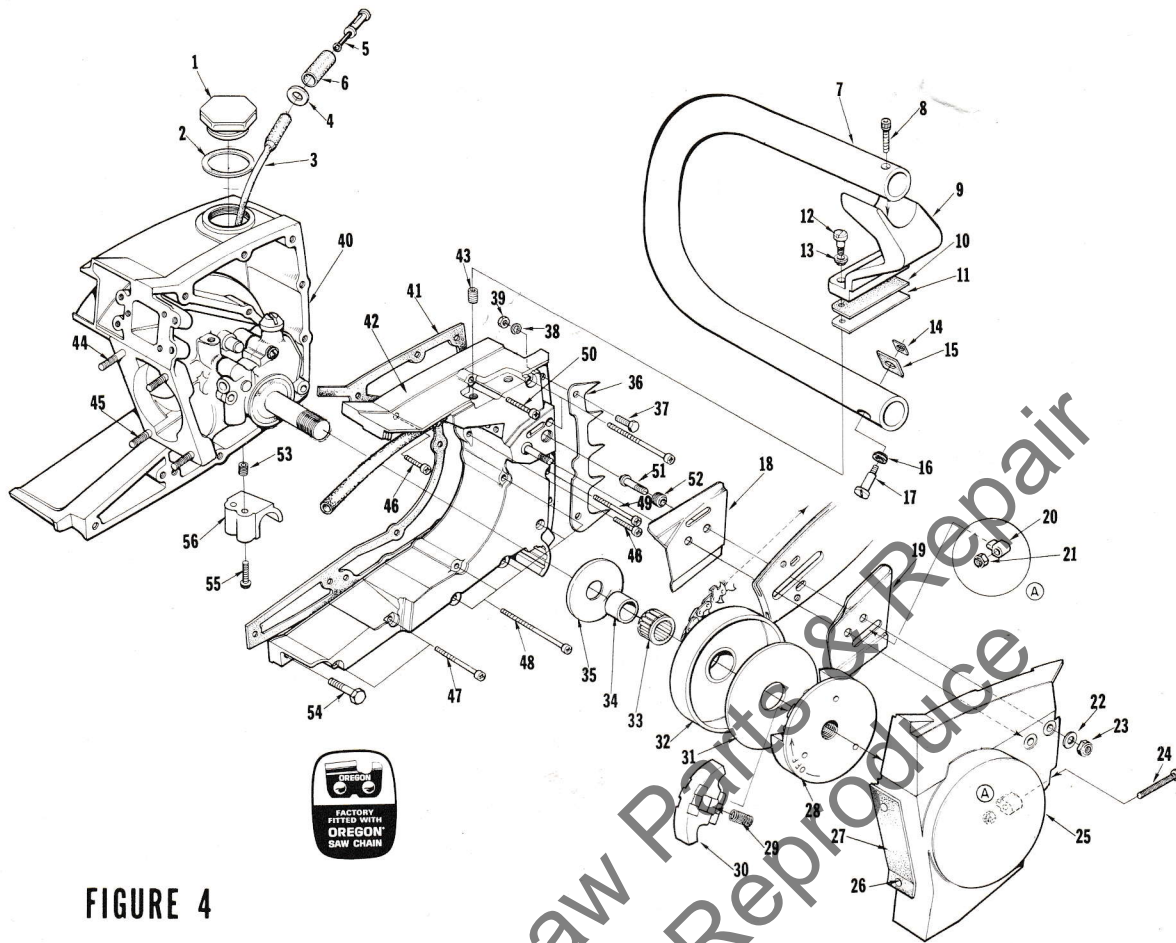


FIGURE 4

No.	Description	Part No.	XL-113E	XL-114E	XL-122E	Qty.	No.	Description	Part No.	XL-113E	XL-114E	XL-122E	Qty.
*1	CAP-fuel filler	A-67501	x	x	x	1		SPROCKET & DRUM-See Note 1	A-64908	x	x	x	1
2	INCLUDES: GASKET	58957	x	x	x	1		SPROCKET-3/8" pitch, 7 tooth	OM68210	x	x	x	1
3	LINE-fuel	63544	x	x	x	1	33	BEARING-cage	64124	x	x	x	1
4	WASHER	64182	x	x	x	1	34	RACE-inner	65985	x	x	x	1
5	FILTER-fuel	A-63920	x	x	x	1	35	WASHER-thrust (inner)	58833-1	x	x	x	1
6	INCLUDES: FILTER-felt	64083	x	x	x	1	36	BUMPER-spiked	A-64722	x	x	x	1
7	HANDLE BAR	A-65557-1	x	x	x	1	37	Includes: SCREW-hex, 12-24 x 5/8	80676	x	x	x	2
8	SCREW-soc., 10-32 x 1	82126	x	x	x	1	38	WASHER-lock #12	83056	x	x	x	2
9	BRACKET-handle bar	A-65666-1	x	x	x	1	39	NUT-hex, 12-24	81068	x	x	x	2
10	PAD-bracket	64610	x	x	x	1	*40	CRANKCASE & TANK	A-64797-D	x	x	x	1
11	PLATE-handle bar bracket	65586	x	x	x	1		Includes: PIN-dowel (not shown)	71430	x	x	x	2
12	SCREW-shoulder	64614-A	x	x	x	2		PIN-dowel (not shown)	65365	x	x	x	2
13	GROMMET-handle bar	64474	x	x	x	2		SEAL (See Fig. 2, Index # 28)	58308-A	x	x	x	1
14	PLATE-handle bar	65670	x	x	x	1	41	GASKET-fuel tank	65364	x	x	x	1
15	PAD-handle bar	65559	x	x	x	1	42	COVER-fuel tank	A-65576-A	x	x	x	1
16	GROMMET-handle bar	67066	x	x	x	1		Includes: (not shown)					
17	SCREW-shoulder	64754	x	x	x	1		GASKET-check valve	58338	x	x	x	1
18	PLATE-guide bar (inner)	63638-B	x	x	x	1		CAP-check valve	58339	x	x	x	1
19	PLATE-guide bar (outer)	63639-A	x	x	x	1	43	INSERT-taplock	72489	x	x	x	3
20	PIN-bar adjusting	65768-1	x	x	x	1	44	STUD-cylinder	63868	x	x	x	1
21	NUT-lock, 10-32	81211	x	x	x	1	45	STUD-cylinder	55871	x	x	x	3
22	WASHER-flat, 5/16	84032	x	x	x	2	46	SCREW-fil, 8-32 x 15/16	82151	x	x	x	2
23	NUT-hex, 5/16 - 18	81196	x	x	x	2	47	SCREW-fil, 8-32 x 1 7/8	82154	x	x	x	2
24	SCREW-guide bar adjusting	65944	x	x	x	1	48	SCREW-fil, 8-32 x 2 3/16	82155	x	x	x	7
25	COVER-drivecase	A-64620-1	x	x	x	1	49	SCREW-fil, 8-32 x 1 7/8	82154	x	x	x	1
26	INCLUDES: RIVET-oval head	85061	x	x	x	2	50	SCREW-fil, 8-32 x 1 1/4	82152	x	x	x	1
27	SHIELD-sawdust	64618	x	x	x	1	51	STUD-guide bar	63861	x	x	x	2
*28	PLATE-clutch	65760-2	x	x	x	1	52	INSERT-threaded	59896-A	x	x	x	2
*29	SPRING-clutch	67053	x	x	x	3	53	INSERT-taplock	72489	x	x	x	2
*30	SHOE-clutch	65761-1	x	x	x	3	54	SCREW-hex, 12-24 x 7/8	80891	x	x	x	1
31	COVER-clutch	63671	x	x	x	1							
32	DRUM & HUB	A-65988	x	x	x	1							

*Denotes new parts.

NOTE 1 - Units using A-64908 must use 63860 Thrust Washer, 63990 Inner Race, 64333 Needle Bearing.

HOMELITE XL CHAIN SAWS

SPECIAL TOOLS (available on order)

A-23937-B WRENCH-combination
22820-5 COLLAR-bearing installation (bearing to shaft)
22828 PLIERS-retaining ring
23136-1 SLEEVE-bearing and shaft installation
23528 WRENCH-socket screw (connecting rod)
23756 PLUG-needle bearing (connecting rod)
23759 SLEEVE-seal protection (back plate)
23846-2 ANVIL-roller bearing disassembly
A-23934 SPANNER-clutch
A-23949 TOOL-piston pin removal
A-23960 BRACKET-rotor removal
23972 SLEEVE-seal installation
24006-2 PLATE-shaft alignment
A-24051 JACKSCREW (bearing to shaft to crankcase)
24054 PLUG-seal assembly (crankcase)
24055 PLUG-bearing and seal assembly (back plate)
A-24057 BEARING REMOVER-(back plate)
24076 SLEEVE-seal protecting (crankcase side)
A-24138 REAMER-compression release
24230 DRIVER-hand, pozidriv
24173 DRIVER-check valve installation
A-23841-A WRENCH-insert
24304 BIT-pozidriv #2

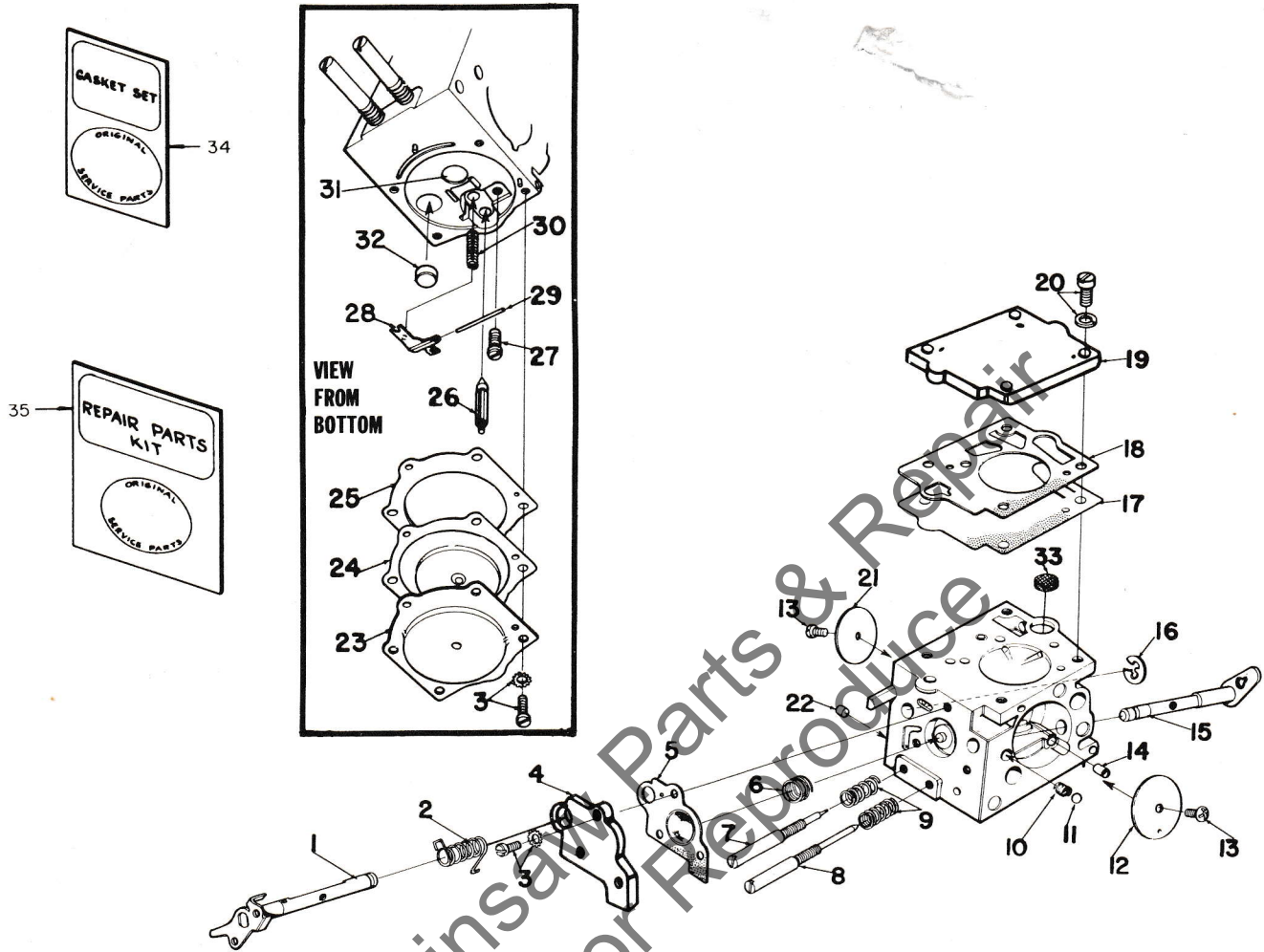
Accessories

65543-1 HEAT EXCHANGER
A-64818 SPARK ARRESTOR

Paint

24101 SPRAY CAN-dark blue
23475 SPRAY CAN-red

HOMELITE XL CHAIN SAWS



No.	Description	Part No.	Qty.	No.	Description	Part No.	Qty.
1	THROTTLE SHAFT ASSEMBLY	64225	1	19	COVER-fuel pump	67002	1
2	SPRING-throttle return	64239	1	20	SCREW-fuel pump cover	64694	4
3	SCREW ASSEMBLY	64689	7	*21	VALVE-throttle	67700	1
4	COVER-accelerator pump	67187	1	22	PLUG-limiting	64692	1
5	DIAPHRAGM-accelerator pump	67188	1	23	COVER	64224	1
6	SPRING-accelerator pump	64240	1	24	METERING DIAPHRAGM ASSEMBLY	64235	1
7	NEEDLE-idle	64241	1	25	GASKET-metering diaphragm	64231	1
8	NEEDLE-high speed	64242	1	26	VALVE-inlet needle	64229	1
9	SPRING-needle adjusting	64236	2	27	SCREW-metering lever pin	64688	1
10	SPRING-choke friction	64238	1	28	LEVER-metering	64245	1
11	BALL-choke friction	60051	1	29	PIN-metering lever	64244	1
12	VALVE-choke	64228	1	30	SPRING-metering lever	64237	1
13	SCREW-valve	64693	2	31	PLUG-welch (main)	65482	1
14	JET-idle air	64690	1	32	PLUG-welch (idle)	30818	1
15	CHOKE SHAFT ASSEMBLY	64227	1	33	SCREEN-fuel inlet	64243	1
16	RING-throttle shaft retaining	64221	1	34	GASKET SET	67019	1
17	DIAPHRAGM-fuel pump	64233	1	35	REPAIR KIT	67197	1
18	GASKET-fuel pump	67008	1		REPAIR KIT-check valve	65386	1

∕Included in Repair Kit 67197

*Denotes new parts.

HOMELITE XL CHAIN SAWS

Part No.	Description	Qty.	Part No.	Description	Qty.	Part No.	Description	Qty.	Part No.	Description	Qty.
22820-5	Collar	1	63713	Shield (inner)	1	64474	Grommet	2	*67222	Ring	1
22828	Pliers	1	714	Shield (outer)	1	*A-64542-2A	Cylinder	1	*67265	Gasket	1
23136-1	Sleeve	1	718	Valve	2	64610	Pad	1	*67275	Tranf.	1
23475	Paint-red	1	63861	Stud	2	64614-A	Screw	2	*67277	Core	1
23528	Wrench	1	63865-S	Bearing	1	A-64620-1	Cover	1	*67280	Lead	1
23756	Plug	1	63868	Stud-(long)	1	64646	Bushing	1	*67281	Condenser	1
23759	Sleeve	1	63869	Rope	1	64653	Spring	1	*67283	Module	1
A-23841-A	Wrench	1	63870	Spring	1	64654	Lever	1	*67284	Rotor	1
23846-2	Anvil	1	63875	Ring	1	64655-2	Clamp	1	*67285	Clamp	1
A-23934	Wrench	1	63877	Stud	2	A-64656-2	Pivot Pin	1	*A-67287	Plate	1
A-23937-B	Wrench	1	63896-1	Rod	1	64677	Spring	1	*67340	Piston Ring	1
A-23949	Plug	1	63905	Washer	2	64688	Screw	1	*67395	Bearing	1
A-23960	Puller	1	A-63919	Line	1	64689	Screw	7	*67386	Button	1
23972	Sleeve	1	A-63920	Filter	1	64690	Jet	1	*67408	Bearing	1
24006-2	Plate	1	A-63936	Fitting	1	64692	Plug	1	*A-67411	Rod	1
A-24051	Jackscrew	1	63910	Plate	1	64693	Screw	2	*A-67437	Bearing	1
24054	Plug	1	A-63928	Cover	1	64694	Screw	4	*A-67482	Valve	1
24055	Plug	1	A-63938	Switch	1	A-64722	Kit-Bumper	1	*67483	Lead-transf.	1
A-24057	Plug	1	A-63939	Lead	1	A-64741	Filter	1	*67484	Lead-tension	1
24076	Sleeve	1	A-63942-1	Rod	1	64754	Screw	1	*A-67501	Cap	1
24101	Paint-blue	1	A-63947	Line	1	*A-64797-D	Crankcase	1	*A-67502	Manifold	1
A-24138	Reamer	1	A-63952-A	Pulley	1	64813	Ring	1	*67506-2	Stop	1
24173	Driver	1	A-63955-A	Filter	1	A-64818	Arrestor	1	*67631	Gasket	1
24230	Driver	1	63990	Race	1	64862	Grommet	2	*A-67681	Carburetor	1
24304	Bit	1	64021	Screw	2	A-64908	Sprocket	1	*A-67696	Piston & Pin	1
25038	Gasket	1	64083-1	Element	1	64948	Lock	1	*A-67697	Handle	1
28008	Clip	1	64085	Screw	2	65080	Spring	1	*A-67698	Handle	1
28028	Washer	1	64086	Condenser	1	65081	Plunger	1	*67700	Valve	1
30818	Plug	1	A-64087	Points	1	65082	Nut	1	OM68210	Sprocket	1
31734	Connector	1	64088	Block	1	65133	"O" Ring	1	71430	Pin	2
A-33055	Terminal	1	64089	Felt	1	A-65199	Rod	1	72489	Insert	3
54422	Core	1	64090	Screw	2	A-65284	Cap	1	75078	Key	1
54423	Clip	1	64091	Coil	1	65321	Screw	5	75120	Ring	1
55411	Screw	2	64102-A	Screw	1	65364	Gasket	1	76421	Screw	2
55871	Stud	3	64124	Bearing	1	65365	Pin	2	FASTENING PARTS		
57289-1	Button	1	64125	Cap	1	65386	Repair Kit	1	80183	8-32x7/8	2
58308-A	Seal	1	64126	Baffle	1	65482	Plug	1	80560	8-32x1/2	2
58319-A	Ring	2	A-64130	Body	1	65491	Screen	1	80571	6-32x3/8	2
58338	Gasket	1	64133-A	Screw	2	65522	Screw	1	80605	6-32x5/16	1
58339	Cap	1	64154	Insert	1	65543-1	Exchanger	1	80648	10-32x1/2	1
58348	Boot	1	64155	Grip	1	A-65557-1	Handle Bar	1	80676	12-24x5/8	2
58405	Spring	1	64182	Washer	1	65559	Pad	1	80821	12-24x1/2	1
58406	"O" Ring	2	64221	Ring	1	A-65576-A	Cover	1	80889	8-36x1/2	2
58409	Ring	1	64224	Cover	1	65586	Plate	1	80891	12-24x7/8	1
58688-A	Seal	1	64225	Throttle	1	65592	Pin	1	80919	4-40x1/4	2
58758-2	Spring	2	64227	Choke	1	A-65666-1	Bracket	1	80983	8-32x1/2	4
58833-1	Washer	1	64228	Valve	1	65670	Plate	1	81065-2	Nut-1/4-28	4
58851	Washer	2	64229	Valve	1	65696	Fitting	1	81068	Nut-12-24	2
58858	Grommet	1	64231	Gasket	1	*65760-2	Plate	1	81112	Nut-5/16-24	1
58924-1	Pin	1	64233	Diaphragm	1	*65761-1	Shoe	3	81126	Nut-6-32	2
58957	Gasket	1	64235	Metering	1	65768-1	Pin	1	81196	Nut-5/16-18	2
58966	Lead	1	64236	Spring	2	65829	Gasket	1	81211	Nut-10-32	1
59064	Bushing	1	64237	Spring	1	65889	Rivet	2	82126	10-32x1	1
59678-A	Reed	4	64238	Spring	1	65944	Screw	1	82151	8-32x15/16	2
59704	Screw	2	64239	Spring	1	A-65948	Valve	1	82152	8-32x1 1/4	1
59736	Gasket	2	64240	Spring	1	*65949-2	Clamp	1	82153	8-32x1 5/8	3
59896-A	Insert	2	64241	Needle	1	65985	Race-inner	1	82154	8-32x1 7/8	3
60051	Ball	1	64242	Needle	1	A-65988	Drum & Hub	1	82155	8-32x2 3/16	7
63113	Screw	1	64243	Screen	1	67002	Cover	1	82156	8-32x3/4	3
63183-2	Cover	1	64244	Pin	1	67008	Gasket	1	*82173	8-32x1	1
63204-1	Crankshaft	1	64245	Lever	1	67019	Gasket	1	*82174	8-32x1 1/4	2
63212-A	Trigger	1	64252	Seat	1	A-67023	Housing	1	*82177	8-32x5/8	2
63228	Worm	1	64253	Retainer	1	*67053	Spring	3	82178	8-32x3/4	2
63290	Washer	1	64266	Gasket	1	67066	Grommet	1	*82179	10-32x1 7/8	2
*63361-A	Gasket	1	64267	Gasket	1	A-67079	Line	1	83009	Washer-1/4	4
63544	Line	1	A-64293	Filter	1	*67138-3	Cover	1	83046	Washer-#10	2
63547-S	Plug	1	64301	Retainer	1	*A-67174	Nut	1	83056	Washer-#12	2
A-63576	Bracket	1	A-64311	Vent	1	67177	Bushing	1	83106	Washer-#8	4
*63599-3	Cover	1	64333	Bearing	1	*67185	Washer	1	83860	Washer	1
63606	Washer	1	64356	Line	1	67187	Cover	1	84018	Washer-#6	2
*63624-1B	Plate	1	64374	Bushing	1	67188	Diaphragm	1	84032	Washer-5/16	2
63637	Rotor	1	64393	Seal	1	*A-67189-1	Cylinder	1	84065	Washer-5/16	1
63638-B	Plate (inner)	1	*64405-1	Cylinder	1	67191	Stud	4	86301	Pin-cotter	1
63639-A	Plate (outer)	1	64423	Cap	1	*A-67192-A	Housing	1	86324	Pin-cotter	1
63671	Cover	1	64442	Pawl	2	67197	Repair Kit	1	90872	"O" Ring	1

*Denotes new parts.

ALWAYS FURNISH MODEL AND SERIAL NUMBER WHEN ORDERING PARTS.

Leon's Chainsaw Parts & Repair
Do Not Sell or Reproduce

HOMELITE®

A **textron** DIVISION

PORT CHESTER, N.Y., U.S.A.

