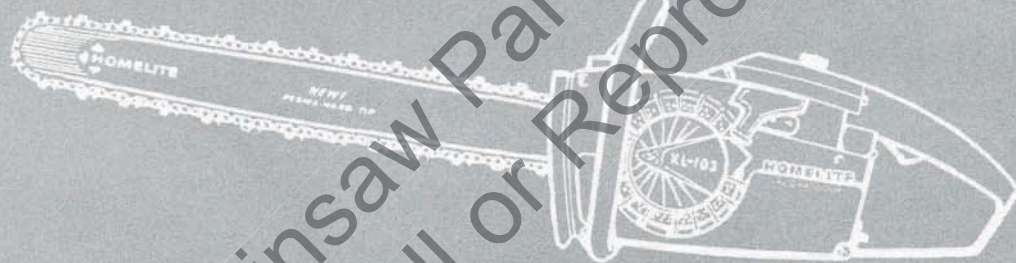


XL-103

PARTS LIST

PART NO. 24106
1st Edition 667
Printed in U.S.A.



HOMELITE®

CHAIN SAW

Leon's Chainsaw Parts & Repair
Do Not Sell or Reproduce

HOMELITE XL-103 CHAIN SAW

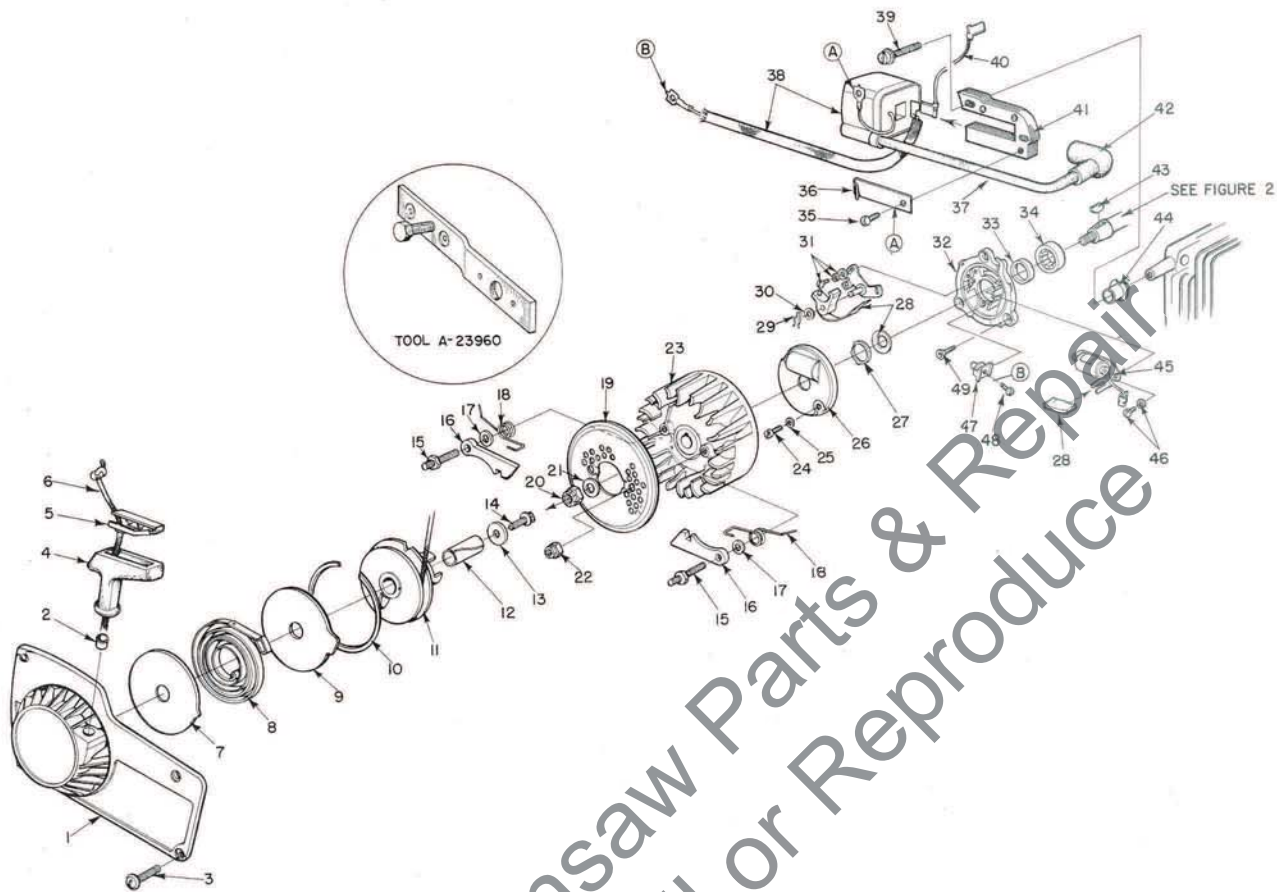


FIGURE 1

No.	Description	Part No.	Qty.	No.	Description	Part No.	Qty.
1	HOUSING - fan	A-64191-1	1	26	COVER ASSEMBLY - breaker box	A-63928	1
2	Includes: BUSHING - starter rope	59313	1	27	FELT RETAINER	64089	1
3	SCREW - pan, hd. #8-32 x 1/2"	80560	4	28	POINTS - set w/felt	A-64087	1
4	GRIP - starting rope	64155	1	29	Includes: CLIP - post	28008	1
5	INSERT - rope retaining	64154	1	30	WASHER - post	28028	1
6	ROPE - starter	63869	1	31	SCREW - breaker clamp	76421	2
7	SHIELD - spring (inner)	63713	1	32	BACK PLATE	63624-1	1
8	SPRING - rewind	63870	1	33	SEAL	58688-A	1
9	SHIELD - spring (outer)	63714	1	34	BEARING - roller	63867	1
10	RING - shield retaining	63875	1	35	SCREW - coil retaining clip	58872	1
11	PULLEY & CUP ASSEMBLY - starter	A-63952	1	36	CLIP - coil retaining	54423	1
12	BUSHING - starter post	64374	1	37	LEAD - high tension	58966	1
13	WASHER - retaining	63606	1	38	COIL - ignition	64091	1
14	SCREW - hex hd. #10-32 x 1/2"	80648	1	39	SCREW - coil core	64021	2
15	STUD - shoulder	63877	2	40	LEAD - ground to switch	A-63939	1
16	PAWL - starter	64442	2	41	CORE - coil	54422	1
17	WASHER - flat	58851	2	42	TERMINAL - spark plug	A-33055	1
18	SPRING - starter pawl	58758-2	2	43	KEY	75078	1
19	SCREEN - rotor	63219	1	44	RETAINER - lead	64301	1
20	NUT - lock 5/16-24	81112	1	45	CONDENSER & CLAMP	64086	1
21	WASHER - flat #6	84065-1	1	46	SCREW - condenser clamp	72486	2
22	NUT - "Flexloc" #10-32	81109-2	2	47	BLOCK - terminal	64088	1
23	ROTOR - magneto	63637	1	48	SCREW - terminal	64090	1
24	SCREW - cover	64085	2	49	SCREW - flat hd., phillips, #12-24 x 5/8"	82131	3
25	WASHER - flat #6	84018	2				

HOMELITE XL-103 CHAIN SAW

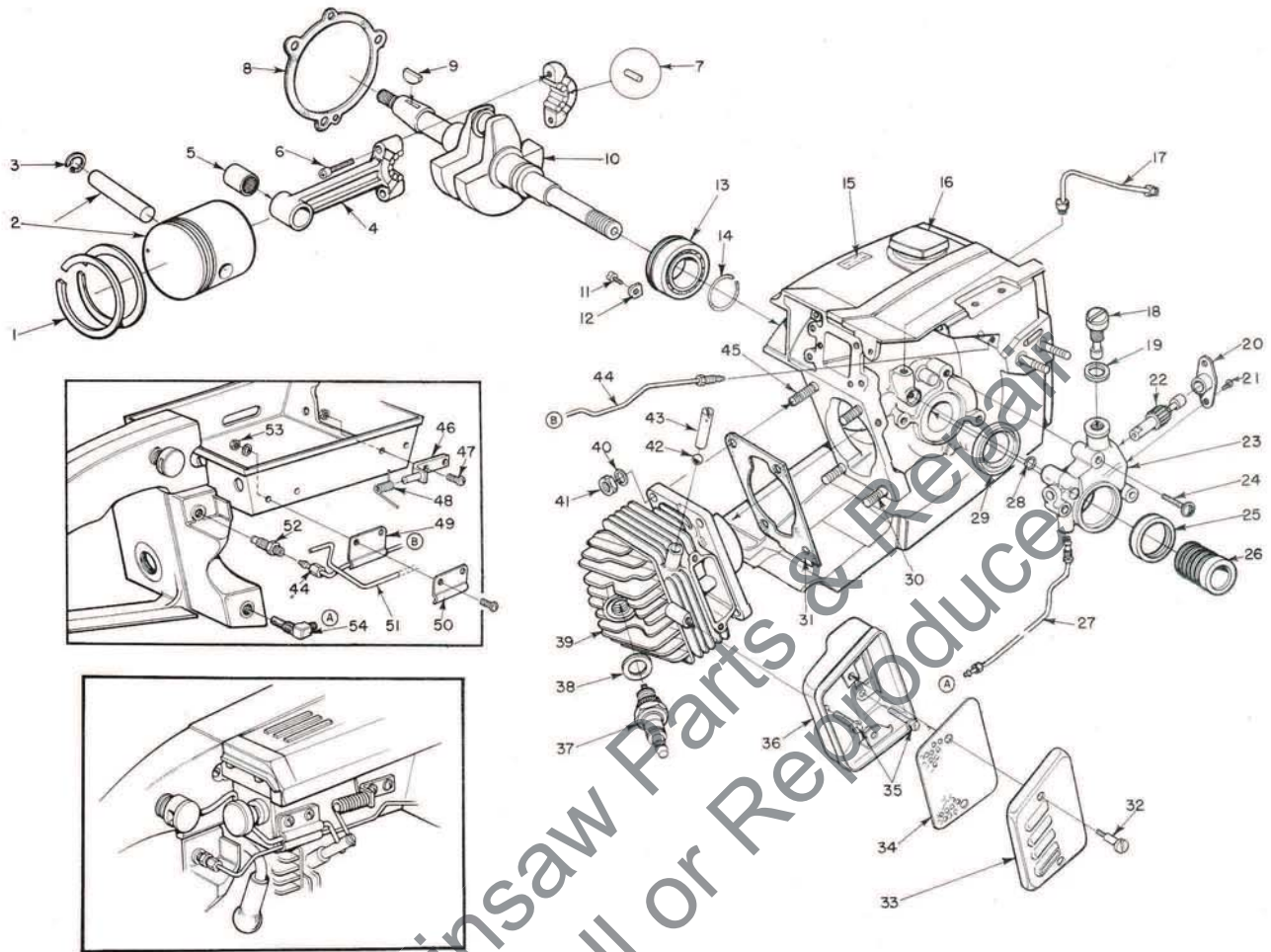


FIGURE 2

No.	Description	Part No.	Qty.	No.	Description	Part No.	Qty.
1	PISTON RING	59436	2	28	"O" RING	90872	1
2	PISTON & PIN	A-59468-A	1	29	SEAL	58308-A	1
3	Includes: RING - retaining	75120	1	30	STUD - cylinder	55871	3
4	ROD - connecting	A-63790	1	31	GASKET - cylinder	63237	1
5	Includes: BEARING - needle	58724	1	32	SCREW - shoulder	64133-A	2
6	SCREW	80889	2	33	CAP - muffler	64125	1
7	ROLLERS - needle (set of 31)	A-63797	1	34	BAFFLE - muffler	64126	1
8	GASKET - crankcase	63361	1	35	SCREW - hex hd., #12-24 x 1/2"	80821	3
9	KEY	75078	1	36	BODY - muffler	A-64130	1
10	CRANKSHAFT	63204-1	1	37	SPARK PLUG	63547-S	1
11	SCREW - bearing retainer	59704	2	38	Includes: GASKET	25038	1
12	WASHER - special	63905	2	39	CYLINDER	A-64542-1	1
13	BEARING - ball	63865-S	1	40	WASHER - lock 1/4"	83009	4
14	RING - retaining	58319-A	1	41	NUT - hex 1/4-28	81065-2	4
15	DECAL	64144	1	42	BALL - compression release	64728	1
16	CAP - fuel filler	A-64375	1	43	PIN - pressure relief	64660-A	1
17	LINE - oil (auto-upper)	A-63919	1	44	LINE - oil (manual)	A-63948	1
18	SCREW - cam	64102	1	45	STUD - cylinder	63868	1
19	GASKET	59736	1	46	PIVOT PIN & BRACKET ASSEMBLY	A-64656-2	1
20	BEARING - flange	59719	1	47	SCREW - pan hd., #6-32 x 3/8"	80571	4
21	SCREW - pan hd., #4-40 x 1/4"	80919	2	48	SPRING - relief valve	64653	1
22	PLUNGER W/HELICAL GEAR	63226	1	49	CLAMP - oil line	64647-2	1
23	HOUSING - oil pump	A-63946	1	50	CLAMP - lever	64655-2	1
24	SCREW - pan hd., #8-32 x 7/8"	80568	3	51	LEVER - relief valve	64654	1
25	SEAL - felt	64393	1	52	VALVE - check	A-59456-1	1
26	WORM - oil pump	63228	1	53	NUT - "Flexloc" #6-32	81126	4
27	LINE - oil (auto-lower)	A-63947	1	54	FILTER - oil	A-64741	1

HOMELITE XL-103 CHAIN SAW

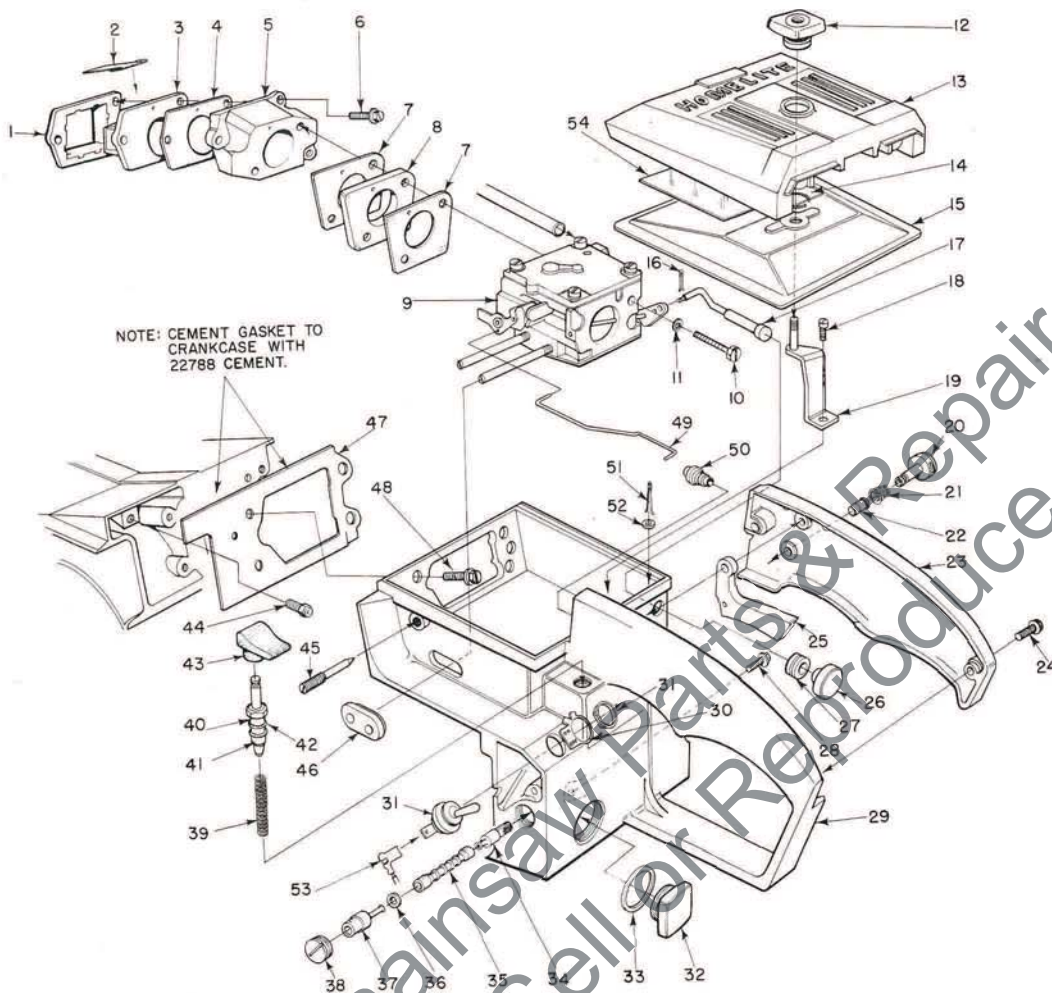


FIGURE 3

No.	Description	Part No.	Qty.	No.	Description	Part No.	Qty.
1	RETAINER - reed valve	64253	1	29	HANDLE - throttle	A-64697	1
2	REED - valve	59678-A	4		Includes: PLUG - pipe 1/16-29		
3	SEAT - reed valve	64252	1		(not shown)	59571	1
4	GASKET - reed valve seat	64266	1	30	PLATE - "On - Off"	63910	1
5	MANIFOLD - intake	64265-1A	1	31	SWITCH - w/nut	A-63938	1
6	SCREW - shoulder	64349	3	32	CAP - oil vented	A-64766	1
7	GASKET - carburetor	64118-1	2	33	Includes: "O" RING	58393	1
8	SPACER - carburetor	64117-1	1	34	FILTER - oil (manual)	A-64293	1
9	CARBURETOR (WALBRO SDC-1) See Note ①	A-64196	1	35	LINE - flexible oil	64356	1
10	SCREW - hex hd., #10-32 x 2"	80965	2	36	GASKET	59736	1
11	WASHER - lock #10	83046	2	37	FITTING - check valve	A-63936	1
12	NUT - cover mounting	A-64268	1	38	SCREW - set	63113	1
13	COVER - air filter	63183-2	1	39	SPRING - plunger	59293	1
14	RING - retaining	58319-A	1	40	PLUNGER	A-57834-15	1
15	FILTER ELEMENT - air	A-63955-A	1	41	Includes: "O" RING	74388	1
16	PIN - cotter	86324	1	42	"O" RING	59074	1
17	ROD - choke	A-63942	1	43	BUTTON - oil pump	63622	1
18	SCREW - hex hd., #12-24 x 1/2"	80821	1	44	VENT - fuel tank	A-64311	1
19	BRACKET - air filter cover	A-63576	1	45	SCREW - idle adjustment	63725	1
20	PIN - throttle lock	A-64391	1	46	GROMMET - "Hi - Lo"	58858	1
21	SPRING - throttle lock	64677	1	47	GASKET - throttle handle	64267	1
22	BUSHING - nylon	64646	1	48	SCREW - hex hd., #12-24 x 5/8"	80676	4
23	COVER - throttle handle	63197-2	1	49	ROD - throttle	63896	1
24	SCREW - pan hd., #8-32 x 1/2"	80560	2	50	BOOT - throttle rod	58348	1
25	TRIGGER - throttle	63212	1	51	PIN - cotter	86301	1
26	BUTTON - choke	57289-1	1	52	WASHER - felt	63290	1
27	GROMMET	58362	1	53	LEAD - ground	A-63939	1
28	SCREW - hex hd., #12-24 x 7/8"	80891	1	54	PLATE - instruction	64173	1

① Refer to Carburetor Parts List 24107.

HOMELITE XL-103 CHAIN SAW

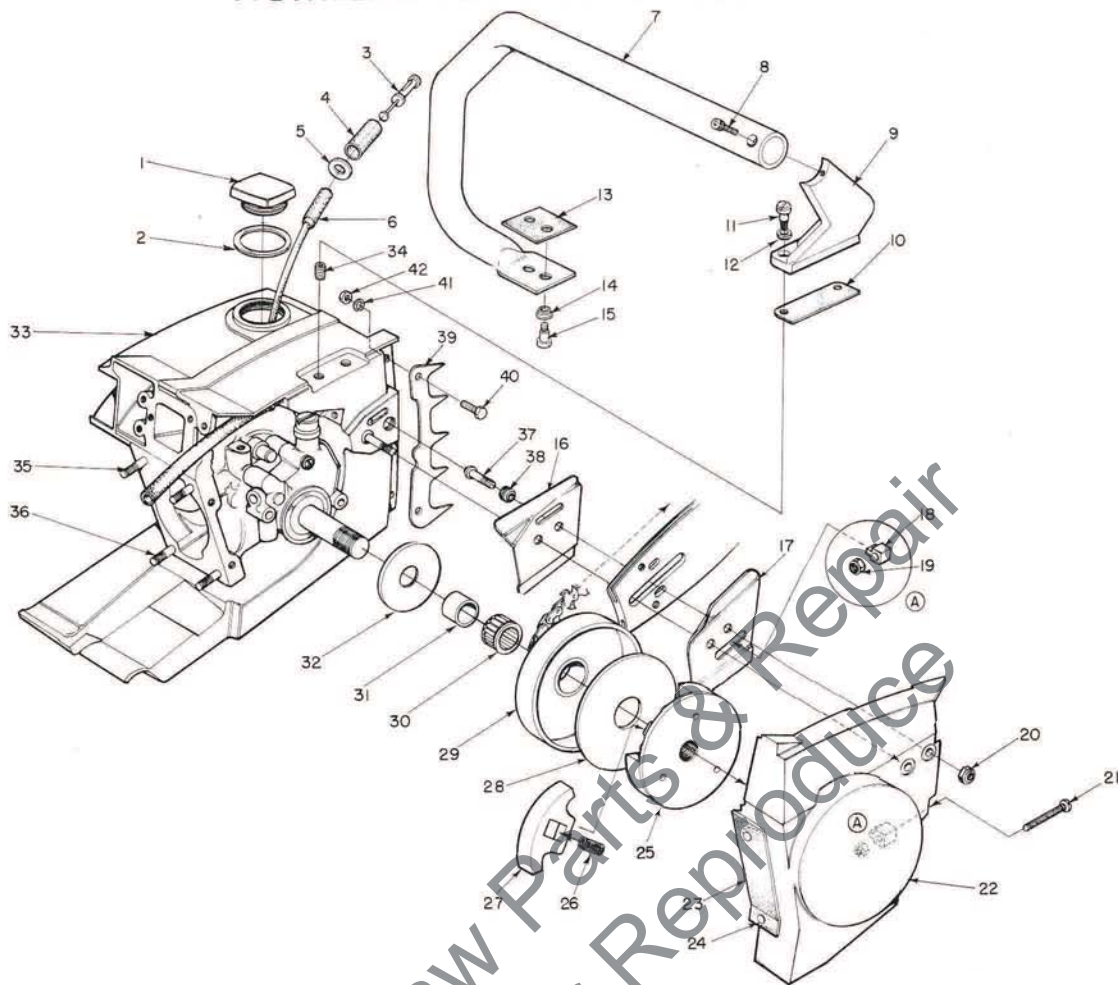


FIGURE 4

No.	Description	Part No.	Qty.	No.	Description	Part No.	Qty.
1	CAP - fuel filler	A-64376	1	22	COVER - drive case	A-64620-1	1
2	Includes: GASKET	64669	1	23	Includes: SHIELD - sawdust	64618	1
3	FILTER - fuel	A-63920	1	24	RIVET - oval hd.	85061	2
4	Includes: FILTER - felt	64083	1	25	PLATE - clutch	63754-1	1
5	WASHER	64182	1	26	SPRING- clutch	64065	3
6	LINE - fuel	63544	1	27	SHOE - clutch	63670-2	3
7	HANDLE BAR	A-63953-2	1	28	COVER - clutch	63671	1
8	SCREW - socket hd., cap #10-32 x 1"	82126	1	29	SPROCKET & DRUM ASSEMBLY	A-63217	1
9	BRACKET - handle bar	63569-3	1	30	BEARING - unit cage	64333	1
10	PAD - bracket	64610	1	31	RACE - inner	63990	1
11	SCREW - shoulder	64614-A	2	32	WASHER - thrust	63860	1
12	GROMMET - bracket	64474	2	33	CRANKCASE & TANK	A-64698	1
13	PAD - handle bar	64609	1	34	Includes: INSERT - "TapLok"	72489	4
14	GROMMET - handle bar	64473	2	35	STUD - cylinder	63868	1
15	SCREW - shoulder	64613-A	2	36	STUD - cylinder	55871	3
16	PLATE - guide bar (inner)	63638	1		SEAL (not shown)	58308-A	1
17	PLATE - guide bar (outer)	63639	1	37	STUD - guide bar	63861	2
18	PIN - bar adjusting	63623-1	1	38	INSERT - threaded	59896	2
19	NUT - lock #10-32	81211	1		PIN - dowel (not shown)	71430	2
20	NUT - hex 5/16-18	81196	2	39	BUMPER, spiked	64067	1
21	SCREW - pan hd., #10-32 x 2 1/8"	82130-1	1	40	SCREW, hex, 12-24 x 5/8	80676	2
				41	WASHER, lock, #12	83056	2
				42	NUT, hex, 12-24	81068	2

Special Tools - available on order

A-22808	WRENCH - combination	24006-2	PLATE - shaft alignment
22820-5	COLLAR - bearing installation (bearing to shaft)	A-24051	JACKSCREW (bearing to shaft to crankcase)
22828	PLIERS - retaining ring	24054	PLUG - seal assembly (crankcase)
23136-1	SLEEVE - bearing and shaft installation	24055	PLUG - bearing and seal assembly (back plate)
23528	WRENCH - socket screw (connecting rod)	A-24057	BEARING REMOVER (back plate)
23756	PLUG - needle bearing assembly (connecting rod)	A-24060	SPANNER WRENCH - clutch
23759	SLEEVE - seal protection (back plate)		Includes:
23846-2	ANVIL - roller bearing disassembly	64309	PIN, dowel (3)
A-23949	TOOL - piston pin removal	24076	SLEEVE - seal protection (crankcase side)
A-23960	BRACKET - rotor removal	24094	TOOL - spark plug removal (use with A-22808)
23972	SLEEVE - seal installation (crankcase w/shaft)	A-24138	REAMER - compression release valve seat



HOMELITE

A **texton** DIVISION • PORT CHESTER, NEW YORK

Leon's Chainsaw Parts & Repair
Do Not Sell or Reproduce