

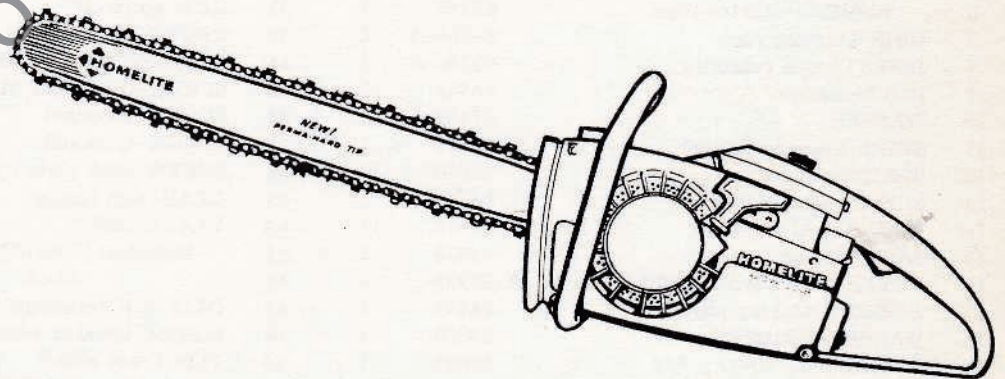
**PARTS LIST**

# HOMELITE

**XL-102**

**AUTOMATIC**

**CHAIN SAW**



**HOMELITE®**

a lextron  
DIVISION

PORT CHESTER, N.Y. U.S.A.

Price .25

Part No. 24461

# XL-102 AUTOMATIC

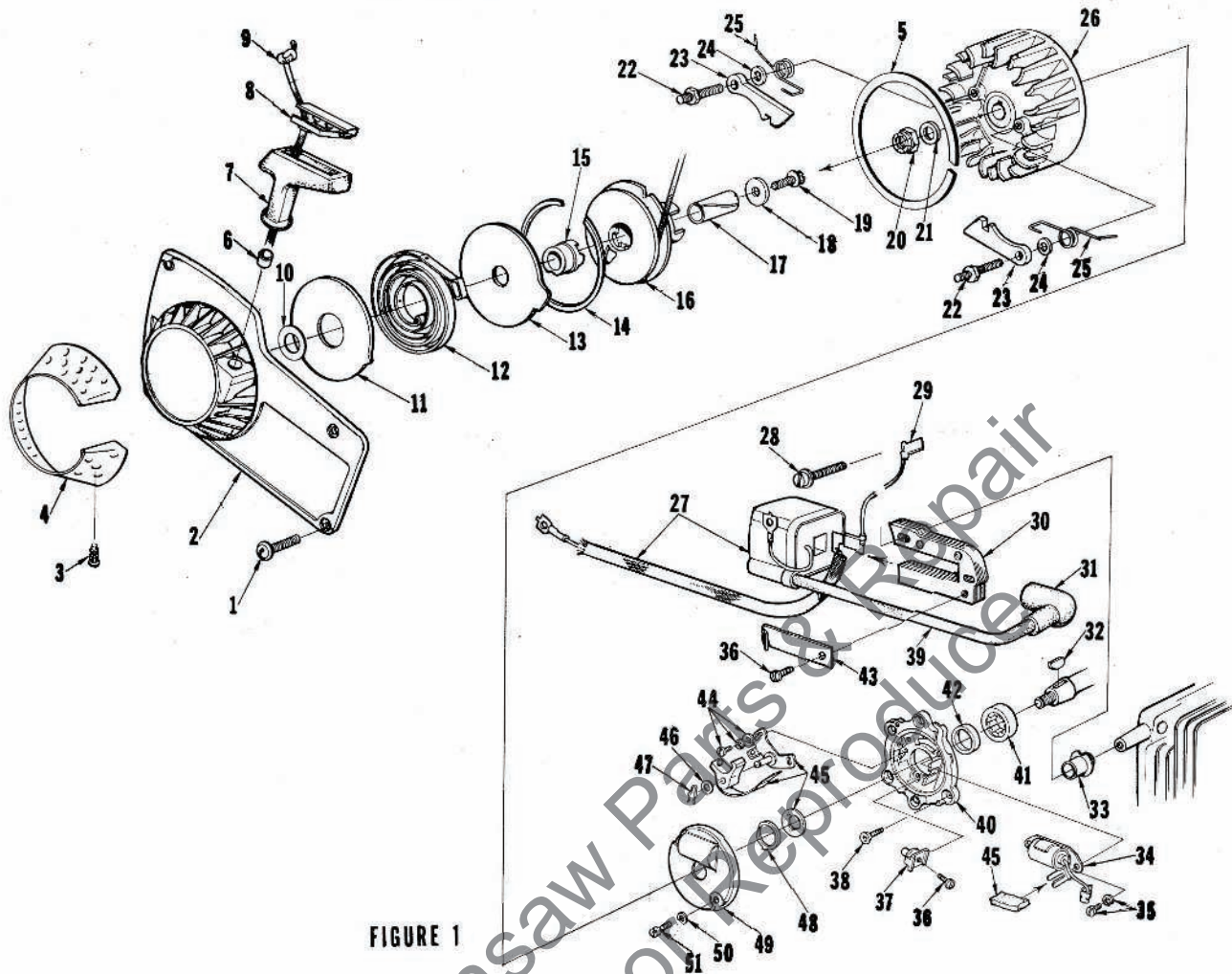


FIGURE 1

No.	Description	Part No.	Qty.	No.	Description	Part No.	Qty.
1	SCREW-hex, 8-32 x 1/2	80983	4	25	SPRING-starter pawl	58758-2	2
2	HOUSING-fan	A-67192-A	1	26	ROTOR-magneto	63637	1
	Includes:			27	COIL-ignition	64091	1
3	STUD-drive	67191	4	28	SCREW-coil core	64021	2
4	SCREEN-fan housing	85491	1	29	LEAD-ground to switch	A-63939	1
	SCREEN-fan housing, See Note 1	63219	1	30	CORE-coil	54422	1
5	RING-air flow	67222	1	31	TERMINAL-spark plug	A-33055	1
6	BUSHING-starter rope	67177	1	32	KEY-woodruff	75078	1
7	GRIP-starting rope	64155-A	1	33	RETAINER-lead	64301	1
8	INSERT-rope retaining	64154-A	1	34	CONDENSER & CLAMP	64086	1
9	ROPE-starter	63869	1	35	SCREW-condenser clamp	55411	2
10	WASHER	67185	1	36	SCREW-terminal	64090	2
11	SHIELD-spring (inner)	63713	1	37	BLOCK-terminal	64088	1
12	SPRING-rewind	63870	1	38	SCREW-back plate retainer	65321	5
13	SHIELD-spring (outer)	63714	1	39	LEAD-high tension	58966	1
14	RING-shield retaining	63875	1	40	PLATE-back	A-65785-A	1
15	LOCK-spring	64948	1	41	Includes: BEARING-roller	67395	1
16	PULLEY & CUP ASSEMBLY	A-63952-B	1	42	SEAL	58688-A	1
17	BUSHING-starter post	64374	1	43	CLIP-coil retaining	54423	1
18	WASHER-retaining	63606	1	44	SCREW-breaker clamp	76421	2
19	SCREW-hex, 10-32 x 1/2	80648	1	45	POINT-set w/felt	A-64087	1
20	NUT-lock, 5/16-24	81112	1	46	Includes: WASHER-post	28028	1
21	WASHER-flat, 5/16	84065-1	1	47	CLIP-post	28008	1
22	STUD-shoulder	63877	2	48	RETAINER-felt	64089	1
23	PAWL-starter	64442	2	49	COVER-breaker box	A-63928	1
24	WASHER-flat	58851	2	50	WASHER-flat, #6	84018	2
				51	SCREW-cover	64085	2

Note 1 - For units below serial #3073002.

# XL-102 AUTOMATIC

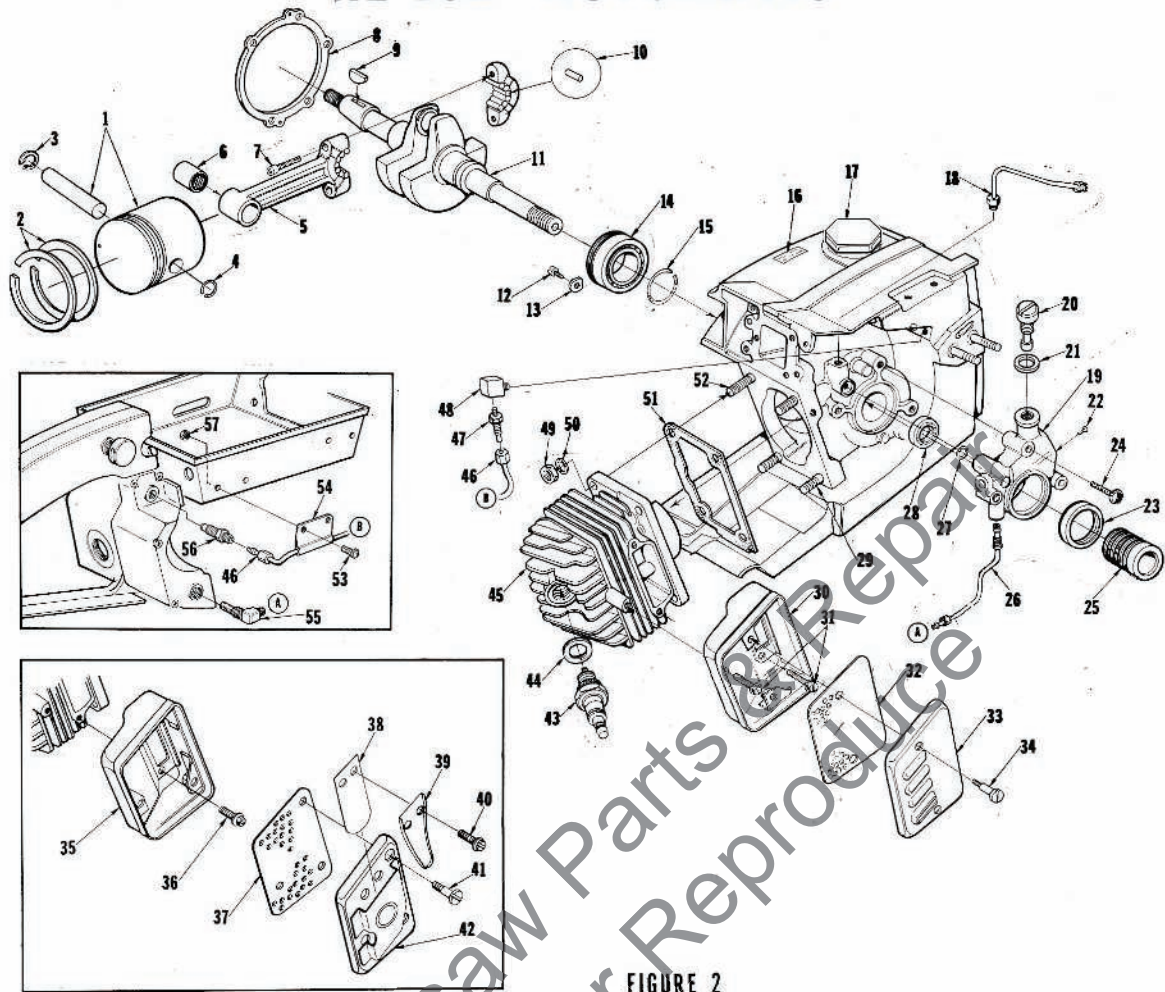


FIGURE 2

No.	Description	Part No.	Qty.	No.	Description	Part No.	Qty.
1	PISTON & PIN	A-59468-C	1	30	BODY-muffler	A-64130	1
2	Includes: PISTON RING	50436	2	31	SCREW-hex, 12-24 x 1/2	80821	3
3	RING-retaining	75120	1	32	BAFFLE-muffler	64126	1
4	RING-piston pin retaining	64813	1	33	CAP-muffler	64125	1
5	ROD-connecting	A-63790	1	34	SCREW-shoulder	64133-A	2
6	Includes: BEARING-needle	58724	1	†	MUFFLER-reed (complete)	A-67888-A	1
7	SCREW-soc, 8-32 x 1/2	80541	2	†35	Includes: BODY-muffler	A-67446-1A	1
8	GASKET-crankcase	63361-A	1	†36	SCREW-hex, 12-24 x 1/2	80821	3
9	KEY-woodruff	75078	1	†37	BAFFLE-muffler	67450	1
10	ROLLER-needle (set of 31)	A-63797-A	1	†38	REED-muffler	67394	1
11	CRANKSHAFT	63204-1	1	†39	STOP-reed	67413-1	1
12	SCREW-bearing retainer	59704	2	†40	SCREW-pan, 8-32 x 1/4	80575	2
13	WASHER-special	63905	2	†41	SCREW-shoulder	64133-A	3
14	BEARING-ball	63865-S	1	†42	CAP-muffler	A-67527-1	1
15	RING-retaining	58319-A	1	43	SPARK PLUG	63547-S	1
16	DECAL-caution	64144	1	44	Includes: GASKET	25038	1
17	CAP-fuel filler	A-67501	1	45	CYLINDER	64405-1	1
	CAP-fuel filler, See Note 1	A-64375	1	46	LINE-oil (manual)	A-67079	1
18	LINE-oil (auto. upper)	A-63919	1	47	FITTING-straight	65696	1
19	PUMP-automatic oil	A-67023	1	48	CONNECTOR-elbow	31734	1
20	Includes: SCREW-cam	64102-A	1	49	NUT-hex, 1/4-28	81065-2	4
21	GASKET	59736	1	50	WASHER-lock, 1/4	83009	4
22	SCREW-pan, 4-40 x 1/4	80919	2	51	GASKET-cylinder	65829	1
23	SEAL-felt	64393	1		GASKET-cylinder, See Note 2	63237	1
24	SCREW-pan, 8-32 x 7/8	80568	3	52	STUD-cylinder (long)	63868	1
25	WORM-oil pump	63228	1	53	SCREW-pan, 6-32 x 3/8	80571	2
26	LINE-oil (auto. lower)	A-63947	1	54	CLAMP-oil	65949-2	1
27	"O" RING	59074	1	55	FILTER-oil	A-64741	1
28	SEAL	58308-A	1	56	VALVE-check	A-65948	1
29	STUD-cylinder (short)	55871	3	57	NUT-flexlock, 6-32	81126	2

Note 1 - Must be used on units below serial #3174217

Note 2 - Must be used on units below serial #3067771

† Optional

ALWAYS FURNISH MODEL AND SERIAL NUMBER WHEN ORDERING PARTS.

# XL-102 AUTOMATIC

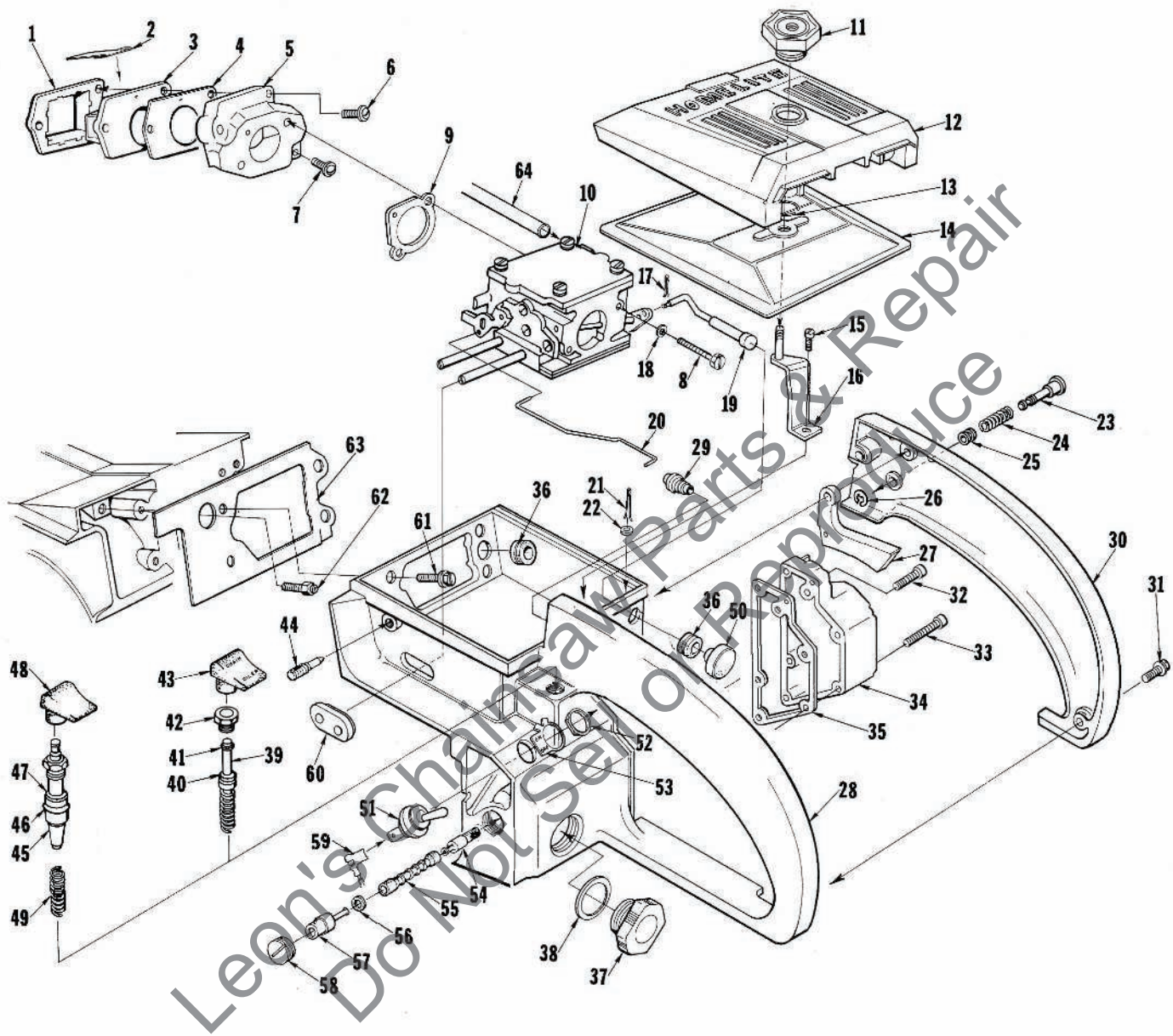


FIGURE 3

# XL-102 AUTOMATIC

No.	Description	Part No.	Qty.	No.	Description	Part No.	Qty.
1	RETAINER-reed valve	64253	1	35	GASKET-oil tank	67265	1
2	REED-valve	59678-B	4		GASKET-oil tank, See Note 1	65394	1
3	SEAT-reed valve	64252	1	36	GROMMET	64862	2
4	GASKET-reed valve seat	64266	1	37	CAP-oil (vented)	A-65284	1
5	MANIFOLD-intake	A-67502-A	1		CAP-oil (vented), See Note 1	A-64766	1
6	Includes: SCREW-pan, 8-32 x 1-1/4	82174	2	38	Includes: "O" RING	65133	1
7	SCREW-pan, 8-32 x 1	82173	1		"O" RING, See Note 1	65323	1
8	SCREW-hex, 10-32 x 1-7/8	82179	2		VALVE-vent(not shown)	63718	1
9	GASKET-carburetor	67631	1	39	PLUNGER-oil pump	A-68061-A	1
10	CARBURETOR	A-64196-A	1	40	Includes: "O" RING	58406	1
11	NUT-cover mounting	A-67627	1	41	"O" RING	59074	1
	NUT-cover mounting, See Note 1	A-64268	1	42	NUT-plunger	65082	1
12	COVER-air filter	63183-2	1	43	BUTTON-oil pump	67386	1
13	RING-retaining	58319-A	1	44	SCREW-idle stop	65522	1
14	FILTER ELEMENT-air	A-63955-A	1	45	PLUNGER-oil pump, See Note 1	A-57834-15	1
15	SCREW-hex, 12-24 x 1/2	80821	1	46	Includes: "O" RING, See Note 1	74388	1
16	BRACKET-air filter cover	A-63576	1	47	"O" RING, See Note 1	59074	1
17	PIN-cotter	86324	1	48	BUTTON-oil pump, See Note 1	63622	1
18	WASHER-lock, #10	83046	2	49	SPRING-plunger, See Note 1	59293	1
19	ROD-choke	A-63942-1	1	50	BUTTON-choke	57289-1	1
	ROD-choke, See Note 2	67000	1	51	SWITCH	A-63938	1
20	ROD-throttle	63896-1	1	52	Includes: NUT	72084-A1	1
21	PIN-cotter	86301	1	53	PLATE-'On-Off'	63910	1
22	WASHER-felt	63290	1	54	FILTER-oil (manual)	A-64293	1
23	PIN-throttle lock	58924-1	1	55	LINE-flexible oil	64356	1
24	SPRING-throttle lock	58405	1	56	GASKET	59736	1
25	BUSHING-throttle lock	59064	1	57	FITTING-check valve	A-63936	1
26	RING-retaining	58409	1	58	SCREW-set	63113	1
27	TRIGGER-throttle	63212-A	1	59	LEAD-ground	A-63939	1
28	HANDLE-throttle, See Note 1	A-68124	1	60	GROMMET-'Hi-Lo'	58858	1
	Includes:			61	SCREW-hex, 12-24 x 5/8	80676	1
	HANDLE-throttle	A-67697-B	1	62	VENT-fuel tank	A-65608	1
29	BOOT-throttle rod, See Note 3	67634	1	63	GASKET-throttle handle	64267	1
30	COVER-throttle handle	63699-3	1	64	LINE-fuel	63544	1
	COVER-throttle handle, See Note 1	63197-2A	1				
31	SCREW-pan, 8-32 x 1/2	80560	2				
	RIVET-accordion (not shown)	65889	2				
32	SCREW-fil, 8-32 x 3/4	82156	3				
	SCREW-fil, 8-32 x 3/4, See Note 1	82156	6				
33	SCREW-fil, 8-32 x 1-5/8	82153	3				
34	COVER-oil tank	A-68120	1				
	COVER-oil tank, See Note 1	A-65584	1				
	Includes: PLUG-pipe(not shown)	59571	1				

Note 1 - Must be used on units below serial #3174217

Note 2 - Must be used on units below serial #3073517

Note 3 - Throttle Handle with a 1/2" hole must use #67634 Throttle Rod Boot and a Throttle Handle with a 3/8" hole must use #58348 Throttle Rod Boot.

# XL-102 AUTOMATIC

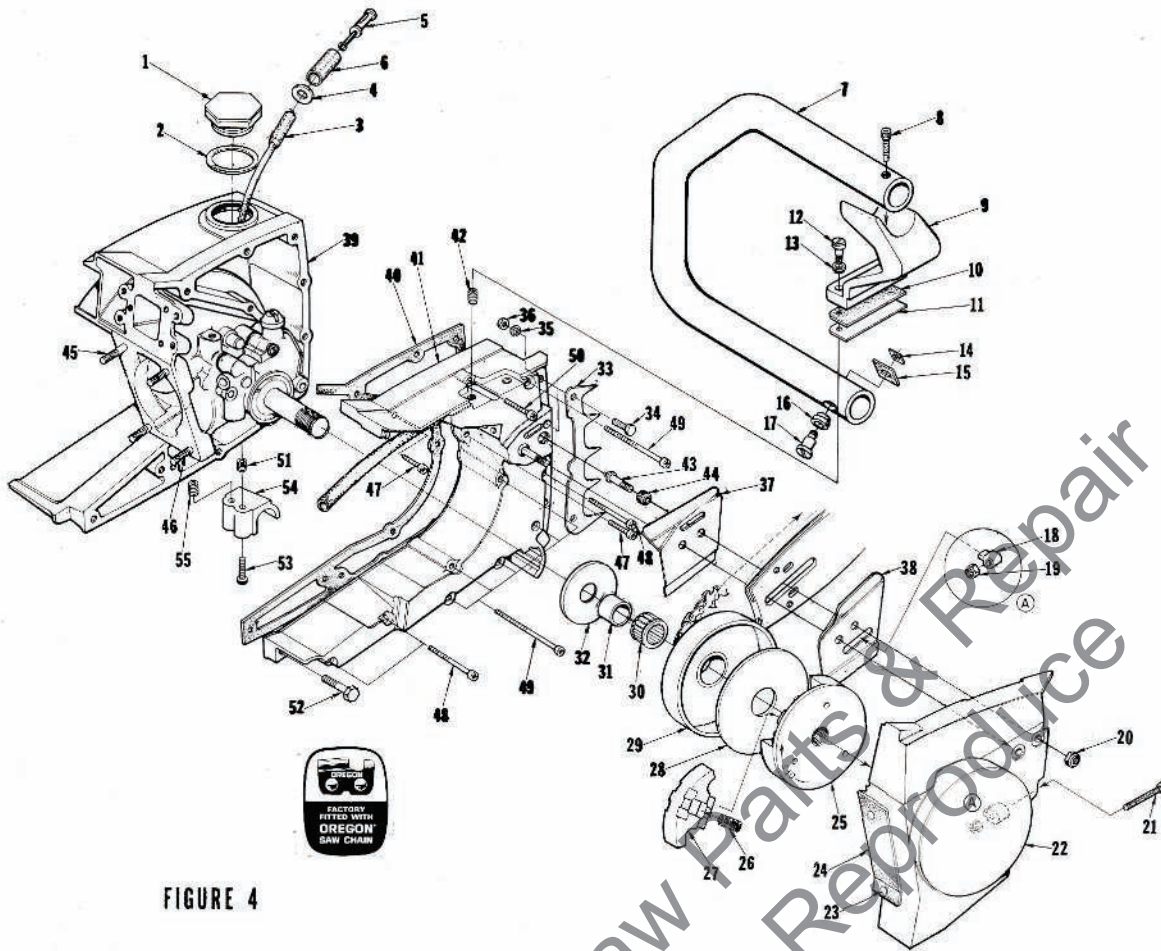


FIGURE 4

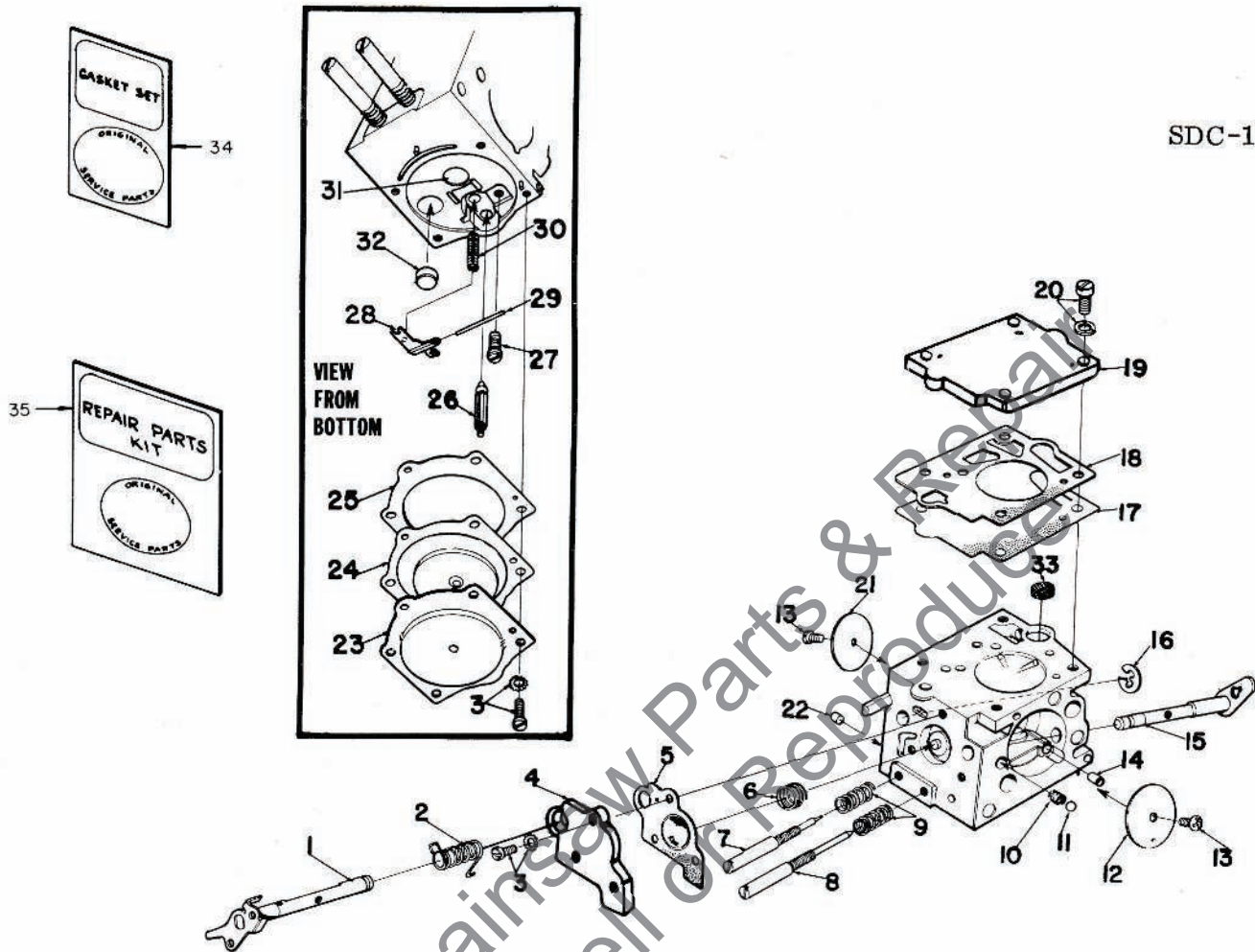
No.	Description	Part No.	Qty.	No.	Description	Part No.	Qty.
1	CAP-fuel filler	A-67501	1	33	BUMPER-spiked	A-64722	1
2	Includes: GASKET	58957	1	34	Includes: SCREW-hex, 12-24 x 5/8	80676	2
3	LINE-fuel	63544	1	35	WASHER-lock, #12	83056	2
4	WASHER	64182	1	36	NUT-hex, 12-24	81068	2
5	FILTER-fuel	A-63920	1	37	PLATE-guide bar (inner)	63638-B	1
6	Includes: FILTER-felt	64083	1	38	PLATE-guide bar (outer)	63639-A	1
7	HANDLE BAR	A-65568-2	1	39	CRANKCASE & TANK	A-64797-D	1
8	SCREW-soc, 10-32 x 1	82126	1		Includes: PIN-dowel (not shown)	71430	2
9	BRACKET-handle bar	A-65066-1	1		PIN-dowel (not shown)	65365	2
10	PAD-bracket	64610	1		SEAL-(see fig. 2 Index #28)	58308-A	1
11	PLATE-handle bar bracket	65586	1	40	GASKET-fuel tank	65364	1
12	SCREW-shoulder	64614-A	2	41	COVER-fuel tank	A-65576-A	1
13	GROMMET-handle bar	64474	2		Includes:		
14	PLATE-handle bar	65670	1		GASKET (not shown)	58338	1
15	PAD-handle bar	65559	1		CAP- (not shown)	58339	1
16	GROMMET-handle bar	67066	1	42	INSERT-taplock	72489	3
17	SCREW-shoulder	64754	1	43	STUD-guide bar	63861	2
18	PIN-bar adjusting	65768-1	1	44	INSERT-threaded	59896-A	2
19	NUT-lock, 10-32	81211	1	45	STUD-cylinder (long)	63868	1
20	NUT-hex, 5/16-18	81196	2	46	STUD-cylinder (short)	55871	3
21	SCREW-guide bar adjusting	65944	1	47	SCREW-fil, 8-32 x 15/16	82151	2
22	COVER-drivecase	A-64620-1	1	48	SCREW-fil, 8-32 x 1-7/8	82154	3
23	Includes: RIVET-oval head	85061	2	49	SCREW-fil, 8-32 x 2-3/16	82155	7
24	SHIELD-sawdust	64618	1	50	SCREW-fil, 8-32 x 1-1/4	82152	1
25	PLATE-clutch	64904-1	1	51	INSERT-taplock	72489	2
26	SPRING-clutch	65842	3	52	SCREW-hex, 12-24 x 7/8	80891	1
27	SHOE-clutch	64569-3	3		KIT-handle bar stop	A-67706	1
28	COVER-clutch	63671	1	53	Includes: SCREW-pan, 10-32 x 5/8	80572	2
29	DRUM & HUB	A-65988	1	54	STOP-handle bar	67506-2	1
†	SPROCKET & DRUM, See Note 1	A-64908	1	55	INSERT-taplock	72489	2
	SPROCKET-3/8" pitch, 7 tooth	OM-68210	1				
30	BEARING-cage	64124	1				
31	RACE-inner	65985	1				
32	WASHER-thrust (inner)	58833-1	1				

† Optional

Note 1 - Units using A-64908 must use 63860 Thrust Washer, 63990 Inner Race, 64333 Needle Bearing.

# XL-102 AUTOMATIC

SDC-12



A-64196-A

No.	Description	Part No.	Qty.	No.	Description	Part No.	Qty.
1	SHAFT-throttle	64225	1	19	COVER-fuel pump	67002	1
† 2	SPRING-throttle return	67006	1	20	SCREW-fuel pump cover	64694	4
3	SCREW ASSEMBLY	64689	7	21	VALVE-throttle	64226	1
4	COVER-accelerator pump	67187	1	22	PLUG-limiting	64692	1
5	DIAPHRAGM-accelerator pump cover	67188	1	23	COVER-metering diaphragm	64224	1
† 6	SPRING-accelerator pump	64240	1	† 24	METERING DIAPHRAGM ASSEMBLY	64235	1
† 7	NEEDLE-idle	64241	1	‡ 25	GASKET-metering diaphragm	64231	1
† 8	NEEDLE-high speed	64242	1	† 26	VALVE-inlet needle	64229	1
† 9	SPRING-needle adjusting	64236	2	† 27	SCREW-metering lever pin	64688	1
† 10	SPRING-choke friction	64238	1	† 28	LEVER-metering	64245	1
† 11	BALL-choke friction	60051	1	† 29	PIN-metering lever	64244	1
12	VALVE-choke	64228	1	† 30	SPRING-metering lever	64237	1
† 13	SCREW-valve	64693	2	† 31	PLUG-welch (main) 5/16"	65482	1
14	JET-idle air	64690	1	† 32	PLUG-welch (idle) 3/8"	30818	1
15	SHAFT-choke, See Note 1	64227	1	† 33	SCREEN-fuel inlet	64243	1
16	RING-throttle shaft retaining	64221	1	† 34	GASKET SET	67019	1
† 17	DIAPHRAGM-fuel pump	64233	1	35	REPAIR KIT	67197	1
18	GASKET-fuel pump	67008	1		REPAIR KIT-check valve	65386	1

† Included in Repair Kit (Index #35)

‡ Included in Gasket Set

Note 1: Below serial #3073517 use 67109

# XL-102 AUTOMATIC

## Tools

A-23937-B	WRENCH-combination
22820-5	COLLAR-bearing installation (bearing to shaft)
22828	PLIERS-retaining ring
23136-1	SLEEVE-bearing and shaft installation
23528	WRENCH-socket screw (connecting rod)
23756	PLUG-needle bearing (connecting rod)
23759	SLEEVE-seal protection (back plate)
23846-2	ANVIL-roller bearing disassembly
A-23934	SPANNER-clutch
A-23949	TOOL-piston pin removal
A-23960	BRACKET-rotor removal
23972	SLEEVE-seal installation
24006-2	PLATE-shaft alignment
A-24051	JACKSCREW-(bearing to shaft to crankcase)
24054	PLUG-seal assembly (crankcase)
24055	PLUG-bearing and seal assembly (back plate)
A-24057	BEARING REMOVER (back plate)
24076	SLEEVE-seal protecting (crankcase side)
A-24138	REAMER-compression release
24230	DRIVER-hand, pozidriv
24173	DRIVER-check valve installation (SDC carb.)
A-23841-A	WRENCH-insert
24304	BIT-pozidriv #2

## Accessories

A-68074	SPARK ARRESTER (REED MUFFLER)
65543-1	HEAT EXCHANGER
A-64818	SPARK ARRESTER
A-65572	KIT-oil reservoir repair
A-24267	KIT-starter rope
A-24269	KIT-filter
A-24273	KIT-ignition
A-24278	KIT-fastener
A-24276	KIT-guide bar plate

## Paint

24101	SPRAY CAN-dark blue
*24453	SPRAY CAN-"70" blue

\* Denotes new parts



# XL-102 AUTOMATIC

Part No.	Description	Qty.	Part No.	Description	Qty.	Part No.	Description	Qty.	Part No.	Description	Qty.
22820-5	Collar	1	63237	Gasket	1	64245	Lever	1	A-67079	Line	1
22828	Pliers	1	63290	Washer	1	64252	Seat	1	67177	Bushing	1
23136-1	Sleeve	1	63361-A	Gasket	1	64253	Retainer	1	67185	Washer	1
23528	Wrench	1	63544	Line	1	64266	Gasket	1	67187	Cover	1
23756	Plug	1	63547-S	Spark Plug	1	64267	Gasket	1	67188	Diaphragm	1
23759	Sleeve	1	A-63576	Bracket	1	A-64268	Nut	1	67191	Stud	4
A-23841-A	Wrench	1	63599-3	Cover	1	A-64293	Filter	1	A-67192-A	Housing	1
23846-2	Anvil	1	63606	Washer	1	64301	Retainer	1		Repair Kit	1
A-23934	Spanner	1	63622	Button	1	64356	Line	1	67222	Ring	1
A-23937-B	Wrench	1	63637	Rotor	1	64374	Bushing	1	67265	Gasket	1
A-23949	Tool	1	63638-B	Plate-(inner)	1	A-64375	Cap	1	67386	Button	1
A-23960	Bracket	1	63639-A	Plate-(outer)	1	64393	Seal	1	67394	Reed	1
23972	Sleeve	1	63671	Cover	1	64405-1	Cylinder	1	67395	Bearing	1
24006-2	Plate	1	63713	Shield-(inner)	1	64442	Pawl	2	67413-1	Stop	1
A-24051	JackscREW	1	63714	Shield-(outer)	1	64474	Grommet	2	A-67446-1A	Body	1
24054	Plug	1	63718	Valve	1	64569-3	Shoe	3	67430	Baffle	1
24055	Plug	1	A-63790	Rod	1	64610	Pad	1	A-67501	Cap	1
A-24057	Bearing	1	A-63797-A	Roller	1	64614-A	Screw	2	A-67502-A	Manifold	1
24076	Sleeve	1	63861	Stud	2	64618	Shield-	1	67506-2	Stop	1
24101	Spray Can	1	63865-S	Bearing	1	A-64620-1	Cover	1	A-67527-1	Cap	1
A-24138	Reamer	1	63868	Stud	1	64688	Screw	1	A-67627	Nut	1
24173	Driver	1	63869	Rope	1	64689	Screw Assembly	7	67631	Gasket	1
24230	Driver	1	63870	Spring	1	64690	Jet	1	67634	Boot	1
A-24267	Kit-starter rope	1	63875	Ring	1	64692	Plug	1	A-67697-B	Handle	1
A-24269	Kit-filter	1	63877	Stud	2	64693	Screw	2	A-67706	Kit-handle bar	1
A-24273	Kit-ignition	1	63896-1	Rod	1	64694	Screw	4	A-67888-A	Muffler	1
A-24276	Kit-guide bar plate	1	63905	Washer	2	A-64722	Bumper-spiked	1	A-68061-A	Plunger	1
A-24278	Kit-fastener	1	63910	Plate	1	A-64741	Filter	1	A-68074	Spark Arrester	1
24304	Bit	1	A-63919	Line	1	64754	Screw	1	A-68120	Cover	1
*24453	Spray Can	1	A-63920	Filter	1	A-64766	Cap	1	A-68124	Handle	1
25038	Gasket	1	A-63928	Cover	1	A-64797-D	Crankcase & Tank	1	OM68210	Sprocket	1
28008	Clip	1	A-63936	Fitting	1	64813	Ring	1	71430	Pin	2
28028	Washer	1	A-63938	Switch	1	A-64818	Spark Arrester	1	72084-A1	Nut	1
30818	Plug	1	A-63939	Lead	1	64862	Grommet	2	72489	Insert	7
31734	Connector	1	A-63942-1	Rod	1	64904-1	Plate	1	74388	"O" Ring	1
A-33055	Terminal	1	A-63947	Line	1	A-64908	Sprocket & Drum	1	75078	Key	1
54422	Core	1	A-63952-B	Pulley & Cap	1	64948	Lock	1	75120	Ring	1
54423	Clip	1	A-63955-A	Filter	1	65082	Nut	1	76421	Screw	2
55411	Screw	2	64021	Screw	2	65133	"O" Ring	1	FASTENING PARTS		
55871	Stud	3	64083	Filter	1	A-65284	Cap	1	80541	8-32 x 1/2	2
57289-1	Button	1	64085	Screw	2	65321	Screw	5	80560	8-32 x 1/2	6
A-57834-15	Plunger	1	64086	Condenser	1	65323	"O" Ring	1	80568	8-32 x 7/8	3
58308-A	Seal	1	A-64087	Point	1	65364	Gasket	1	80572	10-32 x 5/8	2
58319-A	Ring	2	64088	Block	1	65365	Pin	2	80575	8-32 x 1/4	2
58338	Gasket	1	64089	Retainer	1	65386	Repair Kit	1	80648	10-32 x 1/2	1
58339	Cap	1	64090	Screw	2	65394	Gasket	1	80676	12-24 x 5/8	6
58405	Spring	1	64091	Coil	1	65482	Plug	1	80821	12-24 x 1/2	4
58406	"O" Ring	1	64102-A	Screw	1	65491	Screen	1	80891	12-24 x 7/8	1
58409	Ring	1	64121	Bearing	1	65522	Screw	1	80919	4-40 x 1/4	2
58688-A	Seal	1	64125	Cap	1	65543-1	Heat Exchanger	1	80983	8-32 x 1/2	4
58724	Bearing	1	64126	Baffle	1	65559	Pad	1	81065-2	Nut-1/4-28	4
58758-2	Spring	2	A-64130	Body	1	A-65568-2	Handle Bar	1	81068	Nut-12-24	2
58833-1	Washer	1	64133-A	Screw	2	A-65572	Kit-oil reservoir	1	81112	Nut-5/16-24	1
58851	Washer	2	64144	Decal	1	A-65576-A	Cover	1	81126	Nut-6-32	4
58858	Grommet	1	64154-A	Insert	1	A-65584	Cover	1	81196	Nut-5/16-18	2
58924-1	Pin	1	64155-A	Grip	1	65586	Plate	1	81211	Nut-10-32	1
58957	Gasket	1	64182	Washer	1	A-65608	Vent	1	82126	10-32 x 1	1
58966	Lead	1	A-64196-A	Carburetor	1	A-65666-1	Bracket	1	82151	8-32 x 15/16	2
59064	Bushing	1	64221	Ring	1	65670	Plate	1	82152	8-32 x 1-1/4	1
59074	"O" Ring	2	64224	Cover	1	65696	Fitting	1	82153	8-32 x 1-5/8	3
59293	Spring	1	64225	Shaft	1	65768-1	Pin	1	82154	8-32 x 1-7/8	3
59436	Piston Ring	2	64226	Valve	1	65829	Gasket	1	82155	8-32 x 2-3/16	7
A-59468-C	Piston & Pin	1	64227	Shaft	1	65842	Spring	3	82156	8-32 x 3/4	6
59571	Plug	1	64228	Valve	1	65889	Rivet	2	82173	8-32 x 1	1
59678-B	Reed	4	64229	Valve	1	65944	Screw	1	82174	8-32 x 1-1/4	2
59704	Screw	2	64231	Gasket	1	A-65948	Valve	1	82179	10-32 x 1-7/8	2
59736	Gasket	1	64233	Diaphragm	1	65949-2	Clamp	1	83009	Washer-1/4	4
59896-A	Insert	2	64235	Diaphragm	1	65985	Race-inner	1	83046	Washer-#10	2
60051	Ball	1	64236	Spring	2	A-65988	Drum & Hub	1	83056	Washer-#12	2
63113	Screw	1	64237	Spring	1	67000	Rod	1	84018	Washer-#6	2
63183-2	Cover	1	64238	Spring	1	67002	Cover	1	84065-1	Washer-5/16	1
63197-2A	Cover	1	64240	Spring	1	67006	Spring	1	85061	Rivet	2
63204-1	Crankshaft	1	64241	Needle	1	67008	Gasket	1	86301	Pin-cotter	1
63212-A	Trigger	1	64242	Needle	1	67019	Gasket Set	1	86324	Pin-cotter	1
63219	Screen	1	64243	Screen	1	A-67023	Pump	1			
63228	Worm	1	64244	Pin	1	67066	Grommet	1			

\* Denotes new parts

Leon's Chainsaw Parts & Repair  
Do Not Sell or Reproduce



an **extron**  
DIVISION

**PORT CHESTER, N.Y. U.S.A.**