

HOMELITE CHAIN SAW

MODEL IDENTIFICATION

WIZ (1959) - Initial Serial No. 886888

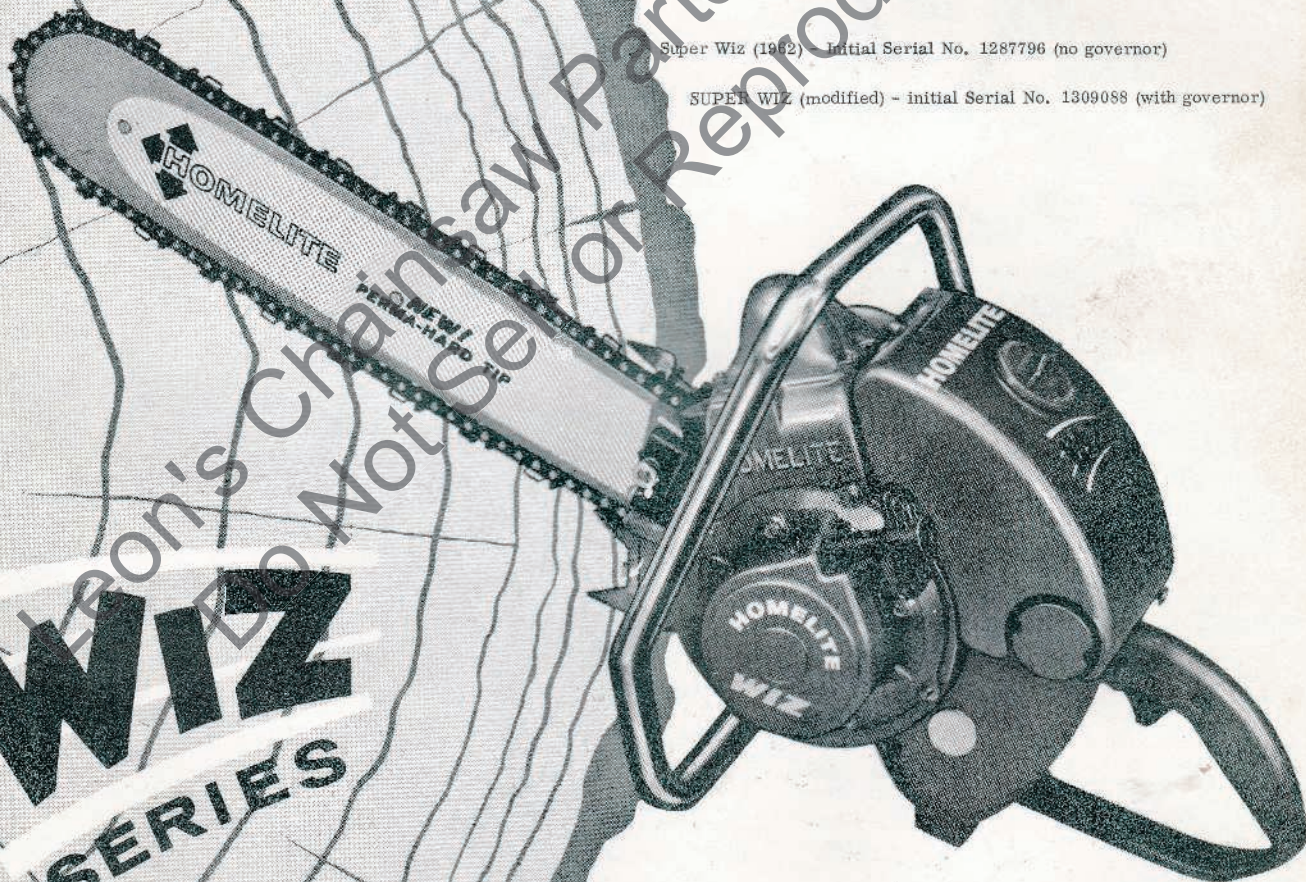
WIZ-A (1960) - Initial Serial No. 1052726 and all units with an "A" preceding the serial number.

WIZ-B (1961 - 62) - Initial Serial No. 1191982 (preceded by "B")

Super Wiz (1962) - Initial Serial No. 1287796 (no governor)

SUPER WIZ (modified) - initial Serial No. 1309088 (with governor)

WIZ
SERIES



PARTS LIST

HOMELITE **WIZ** SERIES CHAIN SAW

FIGURE 1

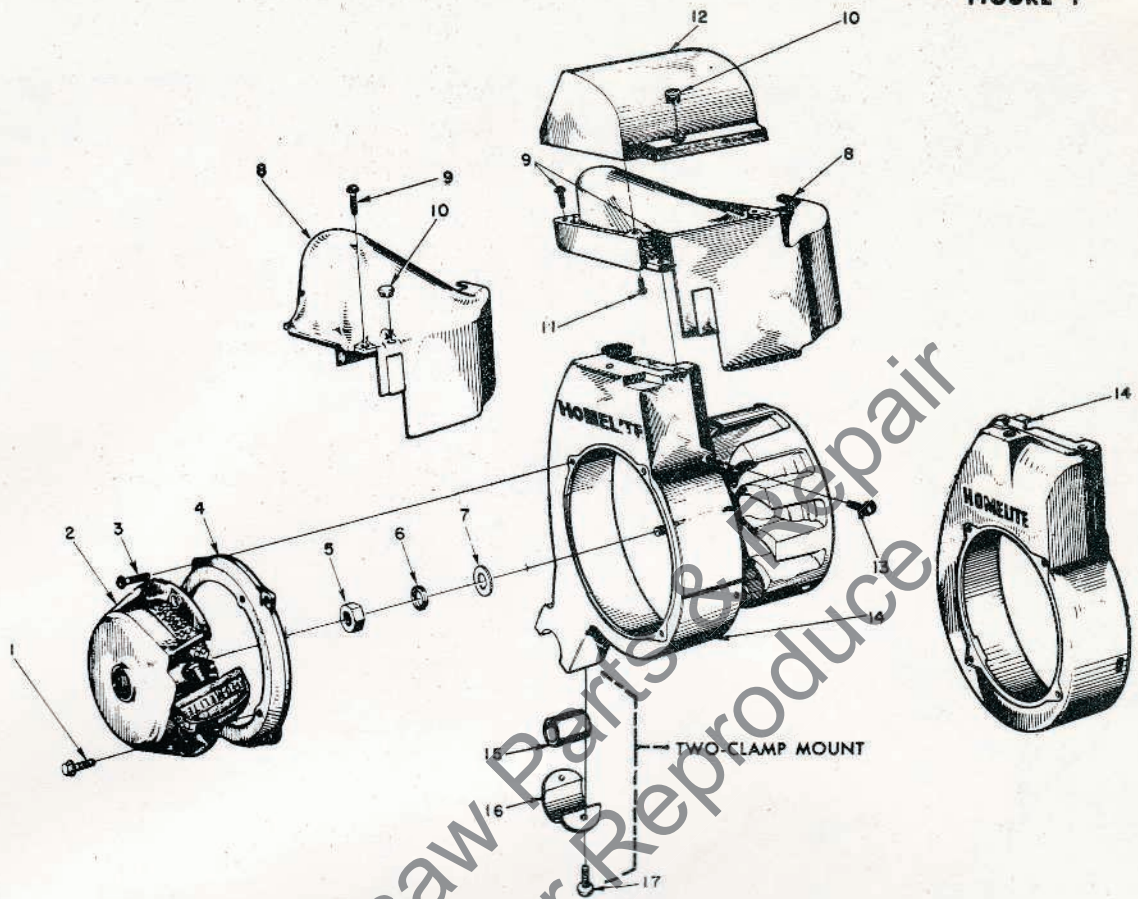
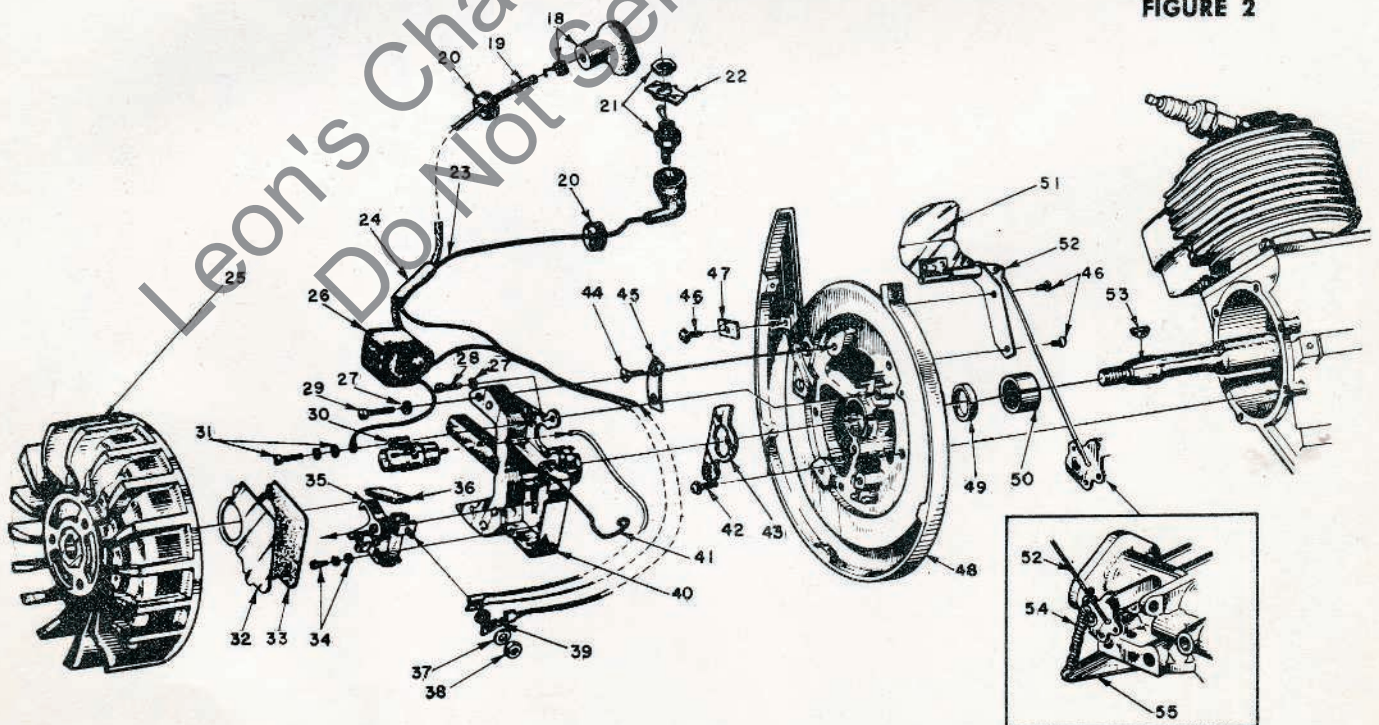


FIGURE 2



HOMELITE **WIZ** CHAIN SAW SERIES

Circled asterisk * denotes a part that may require adaptation for use in older saws; see notes.
Black circled numerals (1) refer to note numbers on page 8.

No.	Description	Part No.	Wiz	Wiz A	Wiz B	Super Wiz	Qty.
1	SCREW - hex hd., 1/4 - 20 x 1/2	80681	*	*	*	*	4
2	STARTER ASSEMBLY (1)	A-56540-6	*	*	*	*	1
		A-56540-1	*	*	*	*	1
		A-56540	*	*	*	*	1
3	SCREW - panhd., 10 - 32 x 9/16	80576	*	*	*	4	
4	ADAPTER, starter	56531	*	*	*	1	
5	NUT - hex, jam 7/16 - 20	81110	*	*	*	*	1
		3/8 - 24	81124	*	*	*	1
		5/16 - 24	81117	*	*	*	1
6	WASHER - lock, 7/16 (2)	83019	*	*	*	*	1
		3/8	83018	*	*	*	1
		5/16	83002	*	*	*	1
7	WASHER - flat, 7/16 aluminum (2)	84055	*	*	*	*	1
		3/8	84070	*	*	*	1
		5/16	84067	*	*	*	1
8	SHIELD - cylinder	56967-2	*	*	*	*	1
		55015-2	*	*	*	*	1
		55015-B	*	*	*	*	1
9	SCREW - panhd., 8 - 32 x 1/2	80560	*	*	*	2	
10	PLUG - button	32814	*	*	*	1	
11	SCREW - self tap, #6 x 1/2	80513	*	*	*	4	
12	CAP - cylinder shield	56968	*	*	*	1	
13	SCREW - panhd., 8 - 32 x 3/8 (3)	80577	*	*	*	3	
14	SHROUD - air (fan housing)	A-58407	*	*	*	*	1
		A-56006-2	*	*	*	*	1
		AA-55208	*	*	*	*	1
15	CUSHION - handle	56281	*	*	*	1	
16	CLAMP - handle, fan housing	56282-A	*	*	*	1	
17	SCREW - rd. hd., 12 - 24 x 1/2 (4)	80821	*	*	*	2	
18	TERMINAL - "Sparky"	A-55373-A	*	*	*	1	
19	LEAD - high tension	55235-A	*	*	*	1	
20	GROMMET	60929	*	*	*	2	
21	SWITCH - toggle w/#22	A-57716	*	*	*	*	1
		A-57650-2	*	*	*	*	1
22	PLATE - "on-off"	55879	*	*	*	1	
23	LEAD - ground	A-57738	*	*	*	*	1
		55990	*	*	*	*	1
24	SLEEVE - insulating	55290	*	*	*	1	
25	ROTOR (2)	57579-A	*	*	*	*	1
		55994-1A	*	*	*	*	1
		56994-A	*	*	*	*	1
		56214-A	*	*	*	*	1
26	COIL (5)	55986-A	*	*	*	1	
27	WASHER - lock, #10	83046	*	*	*	3	
28	SCREW - fil. hd., 10 - 24 x 1/2	80595	*	*	*	1	

No.	Description	Part No.	Wiz	Wiz A	Wiz B	Super Wiz	Qty.
29	SCREW - fil. hd., 10 - 24 x 7/8	80660	*	*	*	*	2
30	CONDENSER - w/terminal	55987	*	*	*	*	1
31	SCREW GROUP - condenser SCREW - condenser Use: WASHER - lock, #8 WASHER - flat, #8	57750	*	*	*	*	1
		55988	*	*	*	*	1
		83060	*	*	*	*	1
22	COVER - dust	84048	*	*	*	*	1
		55979	*	*	*	*	1
33	GASKET - dust cover (2)	55978-2	*	*	*	*	1
		55978	*	*	*	*	1
		55978-1	*	*	*	*	1
34	SCREW GROUP - point SCREW - point Use: WASHER - lock, #8 WASHER - flat, #8	57749	*	*	*	*	1
		55985	*	*	*	*	1
		83060	*	*	*	*	1
35	POINTS - breaker (set)	A-58166	*	*	*	*	1
		A-55271	*	*	*	*	1
36	Includes: WICK - felt	55984	*	*	*	1	
37	WASHER - terminal	55982	*	*	*	1	
38	NUT - terminal	55982	*	*	*	1	
39	TAB - ground lead	77733	*	*	*	1	
40	BOX - breaker w/corn	57744	*	*	*	*	1
		55969	*	*	*	*	1
41	CLAMP - dust cover	55980	*	*	*	1	
42	SCREW - panhd., 10 - 32 x 9/16	80576	*	*	*	1	
43	WASHER - sealing (felt)	56292-A	*	*	*	*	1
		55989	*	*	*	*	1
44	SCREW - panhd., 6 - 32 x 5/16	80598	*	*	*	2	
45	CLAMP - inner	55962	*	*	*	1	
46	SCREW - panhd., 8 - 32 x 1/4	80575	*	*	*	3	
47	CLAMP - outer	55161	*	*	*	1	
48	BACK PLATE	A-57808	*	*	*	*	1
		A-56165-A	*	*	*	*	1
		A-56079	*	*	*	*	1
49	Includes: SEAL - garlock	56134	*	*	*	*	1
		71597	*	*	*	*	1
50	BEARING - needle	57533	*	*	*	*	1
		55204	*	*	*	*	1
51	GOVERNOR (5) Includes: WASHER - burr ARM	A-58222-1	*	*	*	*	1
		84066	*	*	*	*	1
52	ARM	55943	*	*	*	1	
53	KEY - rotor	75078	*	*	*	1	
54	SPRING - governor (6)	58035	*	*	*	1	
55	BRACKET - governor spring (mount on carburetor) (6)	57935-A	*	*	*	1	

Leon's Chainsaw Parts & Repair
Do Not Sell On Reproduction

HOMELITE **WIZ** CHAIN SAW

SERIES

Circled asterisk * denotes a part that may require adaptation for use in older saws; see notes.

Black circled numerals (1) refer to note numbers on page 8.

No.	Description	Part No.	Wiz	Wiz A	Wiz B	Super Wiz	Qty.
1	FUEL TANK (1)	A-55568-A	*	*	*	*	1
	DECAL - "HOMELITE"	56400	*	*	*	*	1
	DECAL - "Instructions"	56596-A	*	*	*	*	1
2	SCREW - panhd., 6-32 x 1/2	80630	*	*	*	*	2
3	CAP - air filter	55066-B	*	*	*	*	1
4	FILTER - air	57172-A	*	*	*	*	1
		56532	*	*	*	*	1
5	GASKET - cement to tank	57173	*	*	*	*	1
6	CAP - fuel	A-56908	*	*	*	*	1
	Includes #7, #8						
7	VALVE - relief	56865	*	*	*	*	1
8	GASKET	72173	*	*	*	*	1
9	NUT - hex, 1/4 - 28 (2)	81114	*	*	*	*	1
	NUT - hex, 1/4 - 20	81108	*	*	*	*	1
	SCREW - fill. hd., 12-24 x 5/8	80710	*	*	*	*	1
	SCREW - panhd., 8-32 x 5/8	80582	*	*	*	*	1
10	CAP - oil filler (incl. #11) (2)	A-56580	*	*	*	*	1
	PLUG - screw	55140-A	*	*	*	*	1
11	GASKET - filler cap	56607	*	*	*	*	1
12	LINE - oil	AA-55191	*	*	*	*	1
13	VALVE - check	A-55824	*	*	*	*	1
14	GASKET	72174	*	*	*	*	1
15	STRAINER - outlet w/nail	A-56200	*	*	*	*	1
16	Includes: FILTER	74374	*	*	*	*	1
17	RING - rubber	56196	*	*	*	*	2
18	SLEEVE - flexible	72107-A	*	*	*	*	1
19	FITTING - fuel outlet	AA-72475	*	*	*	*	1
20	SCREW - flat hd., 6-32 x 3/8	80451	*	*	*	*	1
21	ELBOW - fuel fitting	74917	*	*	*	*	1
22	LINE - fuel	A-56379	*	*	*	*	1
23	CAP - oil line	AA-55187	*	*	*	*	1
24	GASKET	55107	*	*	*	*	1
25	SPRING - check valve	55288-A	*	*	*	*	1
26	BALL - check	25527	*	*	*	*	1
27	SEAT - check ball	55109-A	*	*	*	*	1
28	GASKET	55110	*	*	*	*	1
29	SLEEVE - flexible (oil)	55133-A	*	*	*	*	1
30	PICK-UP - oil	AA-55259-A	*	*	*	*	1
31	SPRING - plunger	71767	*	*	*	*	1
32	PLUNGER - oil (NO button) (3)	A-57384-5	*	*	*	*	1
	Includes: "O" RING	74388	*	*	*	*	1
33	BUTTON - plunger (4)	57289-1	*	*	*	*	1
34	GASKET - air elbow	72971-1	*	*	*	*	1
35	SCREW - panhd., 10-32 x 5/8	80572	*	*	*	*	2
36	SCREW - panhd., 10-32 x 1/4	80638	*	*	*	*	2
37	ADAPTER - air filter	55019-3	*	*	*	*	1
		55019-4	*	*	*	*	1
38	GASKET - adapter	55059	*	*	*	*	1
39	SCREW - hex hd., 1/4 - 20 x 13/16	80573	*	*	*	*	5
40	PLATE - bumper	55103	*	*	*	*	1

No.	Description	Part No.	Wiz	Wiz A	Wiz B	Super Wiz	Qty.
41	HANDLE - one-clamp mount (shown) flush-cut (5)	A-57053	*	*	*	*	1
		AA-55119	*	*	*	*	1
	wrap-around w/80308 screw (6)	A-57057	*	*	*	*	1
		A-55518	*	*	*	*	1
	HANDLE - two-clamp mount (not shown) flush-cut	A-57673	*	*	*	*	1
	wrap-around w/80308 screw	A-57671	*	*	*	*	1
42	ELBOW - connector	31734	*	*	*	*	1
43	ADAPTER - straight	31733-1	*	*	*	*	1
44	WASHER - lock, 5/16	83003	*	*	*	*	2
45	SCREW - hex hd., 5/16-18 x 1/2	80087	*	*	*	*	2
46	WASHER - flat, 1/4 (thick) (7)	84095-2	*	*	*	*	2
	(thin)	84004	*	*	*	*	2
47	NUT - flex-lock, 1/4-28	81130	*	*	*	*	2
48	SCREW - panhd., 10-32 x 3/4	80583	*	*	*	*	3
49	ADAPTER - recd valve	55932	*	*	*	*	1
49A	w/studs	A-56800-A	*	*	*	*	1
50	REED	55941-1					4
51	PLATE - reed	55942					4
52	SCREW - panhd., 4-40 x 3/16	80658	*	*	*	*	8
53	WASHER - lock, 1/4	85009	*	*	*	*	2
54	NUT - hex, 1/4 - 20	81013	*	*	*	*	2
55	GRIP - pistol w/pin & 56373 felt	AA-55281	*	*	*	*	1
56	ROD - throttle - used w/o gov. (8)	56397-1	*	*	*	*	1
	Used: w/governor	56536	*	*	*	*	1
		A-55954	*	*	*	*	1
57	Includes: SPRING (9)	55045-A	*	*	*	*	1
58	TRIGGER - throttle	AA-55207	*	*	*	*	1
59	COVER - pistol grip	AA-55228	*	*	*	*	1
	Includes: LOCK - throttle	AA-55282	*	*	*	*	1
60	SPRING - lock	72970	*	*	*	*	1
61	SCREW - panhd., 8-32 x 1/2 (10)	80560	*	*	*	*	7
62	SCREW - hex hd., 8-32 x 5/8	80582	*	*	*	*	2
63	SHIELD - carburetor (11)	55104-2A	*	*	*	*	1
		55104-2	*	*	*	*	1
64	PLUG - button	56533	*	*	*	*	1
65	CARBURETOR (12)	A-57440	*	*	*	*	1
		A-56484	*	*	*	*	1
		A-56505-A	*	*	*	*	1
66	GASKET - carburetor	55553	*	*	*	*	1
67	GASKET - spacer adapter	55946	*	*	*	*	1
68	STUD	55945	*	*	*	*	2
68A	part of A-55800-A	27464	*	*	*	*	2
69	SPACER - reed adapter	55933	*	*	*	*	1
70	GASKET - adapter	55116	*	*	*	*	1
71	CLAMP - handle	55145	*	*	*	*	1
72	CUSHION - handle	55146	*	*	*	*	1
73	SCREW - hex hd., 1/4 - 20 x 5/8	80581	*	*	*	*	3
74	BRACE (13)	58549	*	*	*	*	1

HOMELITE **WIZ** SERIES CHAIN SAW

FIGURE 3

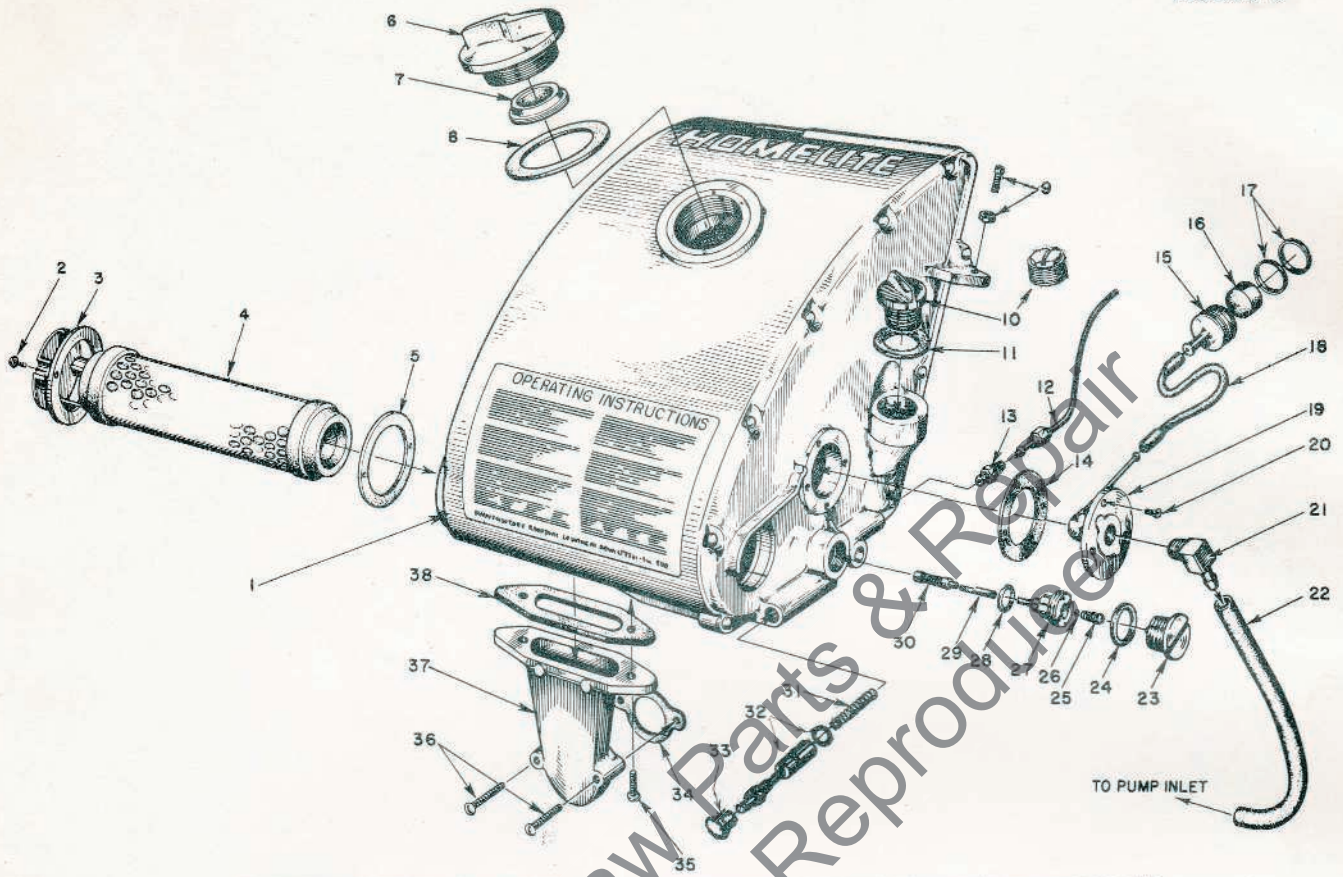
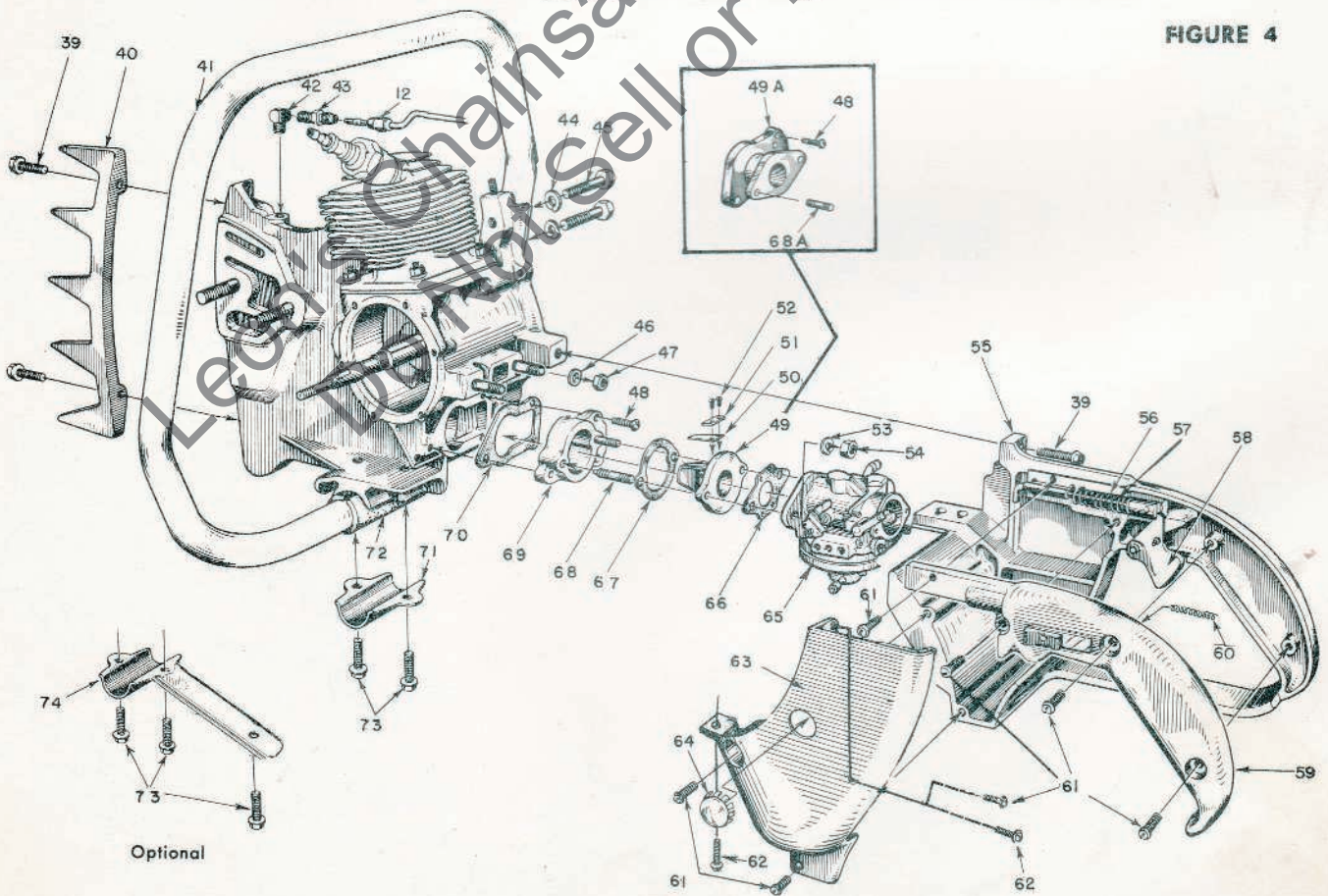


FIGURE 4



HOMELITE **WIZ** SERIES CHAIN SAW

FIGURE 5

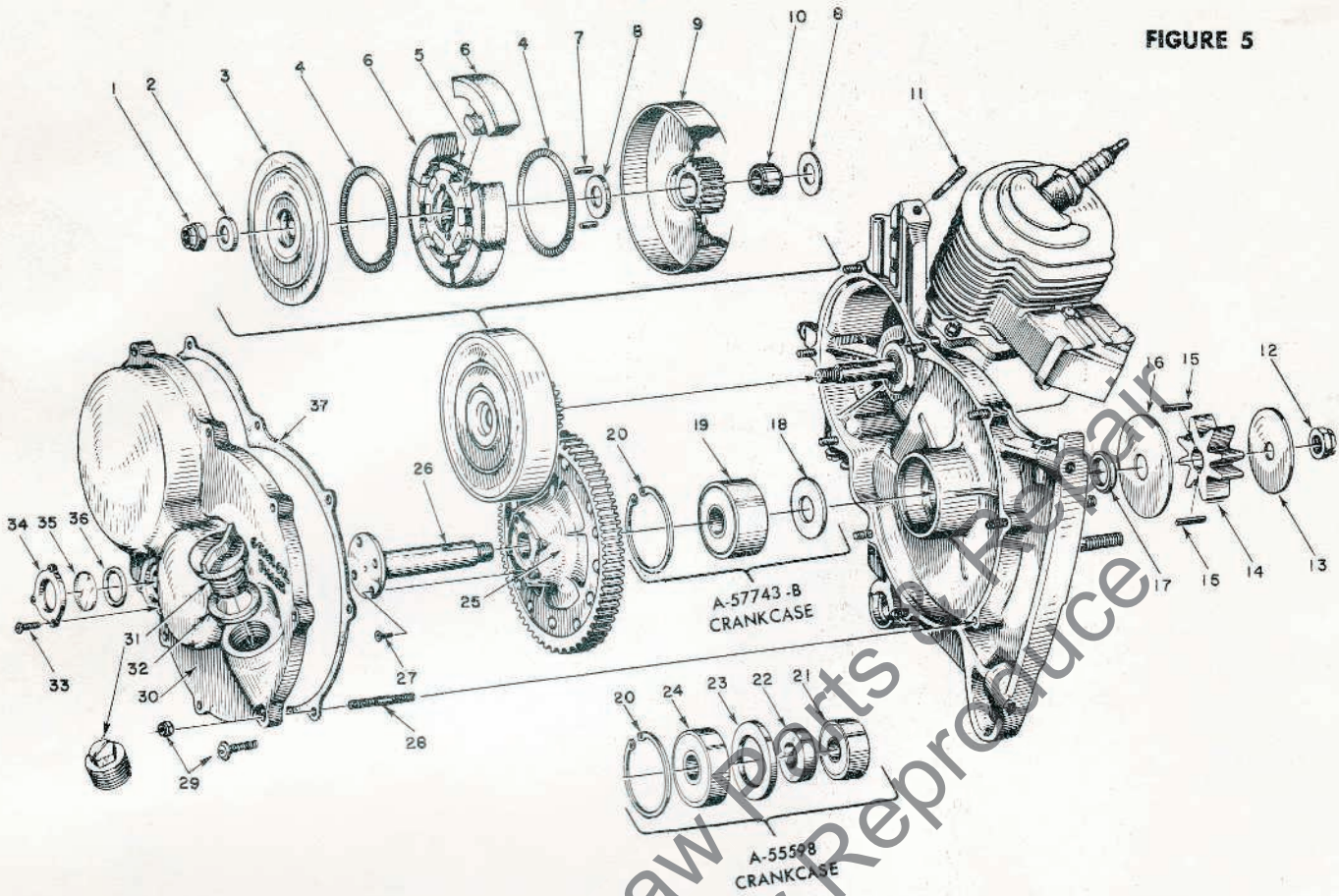
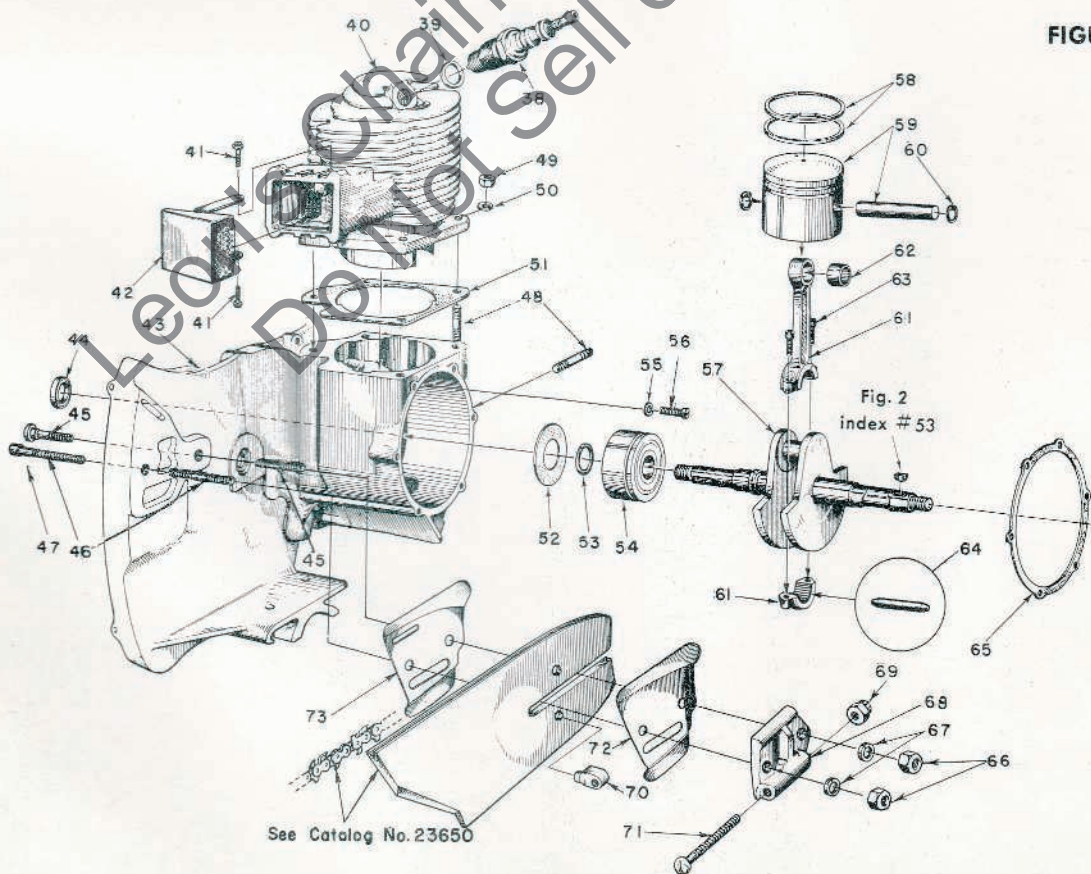


FIGURE 6



HOMELITE **WIZ** CHAIN SAW

SERIES

Circled asterisk * denotes a part that may require adaptation for use in older saws; see notes.

Black circled numerals (10) refer to note numbers on page 8.

No.	Description	Part No.	Wiz	Wiz A	Wiz B	Super	Qty.
1	NUT - 5/8" hex, 3/8-24	81192	*	*	*	*	1
		81116	*	*	*	*	1
2	WASHER - clutch	55036	*	*	*	*	1
3	COVER - clutch	58023	*	*	*	*	1
		55126-A	*	*	*	*	1
4	SPRING - clutch	55123-C	*	*	*	*	2
5	SPIDER - clutch heavy duty (threaded) narrow (threaded) heavy duty (keyed) narrow (keyed)	58547-2	*	*	*	*	1
		58546-3	*	*	*	*	1
		58027	*	*	*	*	1
		55075-3A	*	*	*	*	1
6	SHOE - clutch	A-58028	*	*	*	*	6
		A-55692-A	*	*	*	*	6
7	KEY - clutch	55225-1A	*	*	*	*	2
8	WASHER - thrust	56132	*	*	*	*	2
		55034	*	*	*	*	2
9	CLUTCH DRUM & DR. GEAR 3.57:1 ratio, 21 teeth (optional) 2.84:1 ratio, 25 teeth (optional) 2:1 ratio, 32 teeth	A-58260	*	*	*	*	1
		A-56849	*	*	*	*	1
		A-56830	*	*	*	*	1
		A-58259	*	*	*	*	1
		A-56515	*	*	*	*	1
		A-58460	*	*	*	*	1
10	BEARING - drive gear	56133	*	*	*	*	1
		55035	*	*	*	*	1
11	STUD - fuel tank (part of crankcase)	55871	*	*	*	*	1
		57349	*	*	*	*	1
12	NUT - flex-lock, 1/2-20 flex-lock, 3/8-24	81101	*	*	*	*	1
		81192	*	*	*	*	1
		81116	*	*	*	*	1
13	WASHER - sprocket (outer)	56077	*	*	*	*	1
		55035	*	*	*	*	1
14	SPROCKET - 8 tooth, 1/2"pitch 7 tooth, 9/16"pitch	55593-2	*	*	*	*	1
		55593	*	*	*	*	1
		74481-1	*	*	*	*	1
		74481	*	*	*	*	1
15	KEY - sprocket	56076-1A	*	*	*	*	2
		55482-1A	*	*	*	*	2
16	WASHER - sprocket (inner)	56074	*	*	*	*	1
		55601	*	*	*	*	1
17	SPACER - sprocket	56071	*	*	*	*	1
		55586-A	*	*	*	*	1
18	SEAL - formica	56072	*	*	*	*	1
19	BEARING - ball	56219-S	*	*	*	*	1
20	RING - retaining	28923	*	*	*	*	1
21	BEARING - ball	55181	*	*	*	*	1
22	SPACER - bearing	55024-A	*	*	*	*	1
23	SHOULDER - spacer	55025	*	*	*	*	1
24	BEARING - ball	72040	*	*	*	*	1
25	DRIVEN GEAR 3.57:1, 75 teeth 2.84:1, 71 teeth 2:1, 64 teeth	A-56824	*	*	*	*	1
		AA-55068-2	*	*	*	*	1
		A-56516	*	*	*	*	1
		A-56154	*	*	*	*	1
26	SHAFT - sprocket	56070	*	*	*	*	1
		55005-C	*	*	*	*	1
27	SCREW - flat socket, 12-28x3/8	80651	*	*	*	*	4
28	STUD - (part of crankcase)	57350	*	*	*	*	9
29	NUT - 10 - 32 SCREW - pan hd, 10-32x5/8	81109	*	*	*	*	9
		80572	*	*	*	*	9
30	COVER - gear case	AA-55226-C	*	*	*	*	1
31	CAP - oil filler, includes #32 PLUC - oil filler	A-56580	*	*	*	*	1
		55140-A	*	*	*	*	1
32	GASKET - filler cap, part of A-56580	56607	*	*	*	*	1
33	SCREW - binder hd., 6-32x3/8 pan hd.	80548	*	*	*	*	3
		80571	*	*	*	*	3
34	PLATE - window	55098	*	*	*	*	1
35	WINDOW - plastic	55099	*	*	*	*	1
36	GASKET - "O" ring	55100	*	*	*	*	1
37	GASKET - gear case cover	55053-B	*	*	*	*	1
38	SPARK PLUC - Champion J6J	40160-S	*	*	*	*	1
39	Includes: GASKET	25038	*	*	*	*	1
40	CYLINDER	56108	*	*	*	*	1
		55491-1	*	*	*	*	1
41	SCREW - pan hd., 10 - 32 x 1/4	80625	*	*	*	*	2
42	CAP - exhaust	A-56613-A	*	*	*	*	1
43	CRANKCASE Includes:	A-57743-B	*	*	*	*	1
		A-55598	*	*	*	*	1
11	STUD - fuel tank	Index #11	*	*	*	*	1
28	STUD - cover	Index #28	*	*	*	*	9
44	SEAL - gaglock	56181	*	*	*	*	1
		71587	*	*	*	*	2
45	BOLT - guide bar STUD - guide bar	56020-A	*	*	*	*	1
		57052	*	*	*	*	1
46	BOLT - guide bar STUD - guide bar	55056-D	*	*	*	*	1
		57625	*	*	*	*	1
47	PIN - bolt	57051	*	*	*	*	1
		55606	*	*	*	*	1
48	STUD	41738	*	*	*	*	1
		55871	*	*	*	*	6
49	NUT - hex, 1/2 - 28	81065-2	*	*	*	*	4
50	WASHER - lock, 1/4	83009	*	*	*	*	4
51	GASKET - cylinder	56864	*	*	*	*	1
52	GASKET - scaling	55048-A	*	*	*	*	1
53	RING - retaining	56109	*	*	*	*	1
		55047	*	*	*	*	1
54	BEARING - main	56097-S	*	*	*	*	1
		55193	*	*	*	*	1
55	WASHER - lock (thin)	82061	*	*	*	*	2
56	SCREW - bearing retainer	19238-A	*	*	*	*	2
57	CRANKSHAFT Threaded " Keyed " " "	58898	*	*	*	*	1
		58896	*	*	*	*	1
		58103	*	*	*	*	1
		57555-A	*	*	*	*	1
		57095	*	*	*	*	1
		57195	*	*	*	*	1
58	RING - piston	55038	*	*	*	*	2
59	PISTON & PIN	AA-55279	*	*	*	*	1
60	Includes: RING - retaining	55095	*	*	*	*	2
61	CONNECTING ROD	AA-55195-A	*	*	*	*	1
62	Includes: BEARING - pin	55196	*	*	*	*	1
63	SCREW - 8-32x9/16	80805	*	*	*	*	2
64	ROLLERS (set of 27)	AA-55280	*	*	*	*	1
65	GASKET - back plate	55049	*	*	*	*	1
66	NUT - hex, 3/8 - 16	81089-2	*	*	*	*	2
67	WASHER - lock ADJUSTING PLATE Includes:	83018	*	*	*	*	2
		A-55591	*	*	*	*	1
68	PLATE - adjusting	55551-B	*	*	*	*	1
69	NUT	81123	*	*	*	*	1
70	PIN - adjusting	55552	*	*	*	*	1
71	SCREW - pin rd. hd., 5/16-18x2	80617	*	*	*	*	1
72	PLATE - bar (outer)	56957-A	*	*	*	*	1
73	PLATE - bar (inner) SHIM - (inner)	56956	*	*	*	*	1
		55128	*	*	*	*	1

NOTES

SUPER WIZ models modified after S/N 1309088; late models incorporate new fan housing with additional handle support, cylinder shield with cap, governor with spring bracket on carburetor, and carburetor throttle opening spring replaced with #56175 throttle friction spring. Alternate parts are listed; check serial number of saw for correct application. See SM#419-CS.

- ① **STARTER PARTS** - Refer to F-M Starter Parts Sheet #23649-A. Note possible modifications identified by I.D. of starter cup and mating rotor; also refer to CRANKSHAFT Note ②.
- ② **NUT** Larger I.D. than original identifies saw that **LOCKWASHER** has been converted to later and larger rotor and crankshaft. Refer to Starter Parts Sheet #23649-A for corresponding starter cup and rotor; also see SM#296-CS, 382-CS, 382a-CS.
- ROTOR** - Larger bore fits later crankshafts with larger taper on timing end; See SM#296-CS, 382-CS and 382a-CS. Also see Note ⑤.
- GASKET** - dust cover - Larger I.D. required on larger crankshafts; see above mentioned Service Memos.
- CRANKSHAFT** - Improved crankshaft requires change of rotor, dust cover gasket, and fastening parts; see above mentioned Service Memos.
- ③ **SCREW** - #80577 only 3 used; one #80360 (longer) used thru #55104-2 carburetor shield. Only 2 used with new #55104-2A shield (see SCREW - #80582 below).
- SHIELD, carburetor** - #55104-2A has added lug on bottom and thicker lug on top; attach with longer (#80582) screws.
- SCREW** - #80582 (8-32 x 5/8) fastens new #55104-2A carburetor shield to fan housing.
- BRACE, handle** - #58549, mount one end on drivecase in place of original handle bar clamp (use original clamp screws). Locate hole at end of brace against bottom of throttle handle; drill and tap a 1/4 - 20 hole, attach brace to handle with #80581 screws.
- HANDLE** - #A-57053 supersedes #AA-35119
#A-57057 supersedes #A-48518.
- ④ **SCREW** - handle clamp - #80821 shorter, replaces original #80289 screw (12 - 24 x 3/8) and #83056 (#12) lock-washer.
- ⑤ **COIL** - #55986-A may be used with original rotors (without "-A" suffix); new rotor (with "-A" suffix) requires new coil.
- ⑥ **GOVERNOR** - #A-58222-1 used on Super Wiz units above S/N 1309087. Below S/N 1309088 Super Wiz saws not originally equipped with governors; see SM#419-CS for special design governor and use of throttle friction spring in carburetor.
- SPRING, governor** - #58035 used with GOVERNOR; see above.
- BRACKET, spring** - #57935-A used with GOVERNOR; see above.
- ROD** - #A-55954 requires #55045-A spring; used with GOVERNOR.
- SPRING** - #55045-A used with GOVERNOR.
- ⑦ **FUEL TANK** - #A-55568-A replaces original tanks; requires A-56580 oil filler cap.
- NUT, fuel tank** - #81114 used with #55871 stud in A-57743-B crankcase.
#81108 used with #57349 stud in A-57743-A crankcase.
- SCREW** - #81108 replaced by stud and nut (above).
- STUD, fuel tank** - #55871 stud used in A-57743-B crankcase.
#57349 stud used in A-57743-A crankcase.
- CAP, oil filler** - #A-56580 used in replacement fuel tanks.
- PLUG, oil filler** - #55140-A used only in original fuel tanks.
- WASHER** - #84095-2 case-hardened washer; see SM#423-CS.
- ⑧ **PLUNGER, oil** - original plunger and button assembly now serviced by separate plunger and button.
- ⑨ **CARBURETOR** - #A-57440 supersedes #A-56484, #A-56505-A. Refer to Carburetor Parts List #23538 for #A-57440 carburetor, #23521 for #A-56484 carburetor, #23520 for A-56505-A carburetor. Also see SM#418-CS.
- ⑩ **NUT** - #81192 replacement nut permits use of #2280S combination wrench.
- ⑪ **COVER, clutch** - #58023 used with heavy duty clutch drum, spider and shoes; new #AA-55226-C gear case cover required.
- SPIDER** - #58027 used with heavy duty clutch drum, clutch cover, and shoes; new #AA-55226-C gear case cover required.
- SHOE** - #A-58028 used with heavy duty clutch drum, clutch cover, and spider; new #AA-55226-C gear case cover required.
- CLUTCH DRUM & GEAR** - #A-58260 used with heavy duty clutch cover, spider, and shoes; new #AA-55226-C gear case cover required. Optional 2.84:1 and 2:1 ratio also available.
- COVER, gear case** - #AA-55226-C (new) accommodates heavy duty clutch drum, clutch cover, spider and shoes; original narrow clutch parts still may be used with new cover. Replaces original #AA-55226-A, #AA-55226-B covers.
- CAP, oil filler** - #A-56580 does not fit #AA-55226-A cover; see SM#351-CS.
- PLUG** - oil filler - #55140-A used in #AA-55226-A cover; see SM#351-CS.

(continued on Page 9)



NOTES

- 12** WASHER, thrust - #56132 large bore, #55034 small bore.
 CLUTCH DRUM & GEAR (below)
 CLUTCH DRUM & GEAR - #A-56849 (3/4" bore) supersedes
 #A-56135 (discontinued) in early
 models with small crankshaft;
 #A-56830 (13/16" bore) supersedes
 #AA-55086 (discontinued) in units
 with larger crankshaft.
 BEARING, drive gear - #56133 large bore; #55035 small bore.
 DRIVEN GEAR - #A-56824 supersedes original #AA-55068-2.
 See SM#326-CS, #335-CS.

- 13** STUD - #57350 with #81109 nut replaces #80572 screw; see
 SM#342-CS.
 NUT - #81109 nut with #57350 stud; see SM#342-CS.
 SCREW - #80572 replaced by stud and nut (above).

- 14** SPARK PLUG - Cold weather operation use hotter plug; see
 SM#355-CS.

- 15** CRANKCASE - #A-57743-B supersedes #A-57743-A (Super
 Wiz), #A-57743 (Wiz-B), and #A-57099 (Wiz-A).
 BOLT, guide bar - #58020-A replaces #58020 with #58154 pin
 (in #A-57743-A crankcase), and #57624
 with #57676 pin (in #A-57743 crankcase).
 See SM#409-CS, #409a-CS. #57625 bolt
 used in #A-57743, A-57743-A, A-57743-B.
 STUD, guide bar - #57052 and #57051 used in #A-57099 (Wiz-A)
 crankcase. Can be used in #A-55598 (Wiz)
 crankcase if later type #56957-A and #56956
 guide bar plates are also installed.
 #55056-D and #55606 used in #A-55598 (Wiz)
 crankcase. Can be replaced by later type -
 see above.
 NUT - #81089-2 replaces #81089; see SM#409a-CS.
 PLATE, guide bar - #56957-A and #56956 can be used in A-55598
 (Wiz) crankcase if both later type studs
 are installed; see STUD (above).
 PIN - #41738 used with #57625 guide bar bolt, see BOLT (above).

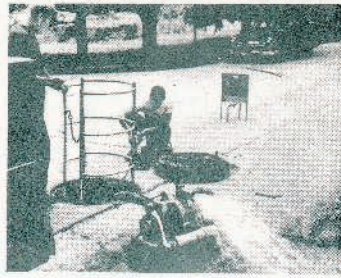
- 16** SPIDER, threaded - See SM#464-CS.
 #58547-2 (threaded) replaces #58027 (keyed) when new threaded
 crankshaft is installed; also see Note **11**.
 #58546-3 (threaded) replaces #55075-3A (keyed) when new
 threaded crankshaft is installed; also see Note **11**.

KEY, clutch - See SM#464-CS.
 #55225-1A used with keyed crankshaft and spider. Not required
 when threaded crankshaft and spider are installed.

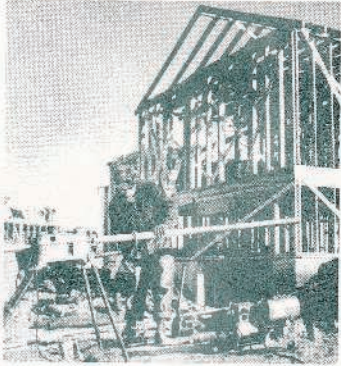
CRANKSHAFT, threaded - See SM#464-CS.
 #58898 (threaded) supersedes #58103 (keyed); requires threaded
 spider. #58896 (threaded) supersedes #57333-A (keyed); re-
 quires threaded spider.

NOTE: When present stock of keyed crankshafts is exhausted, only
 threaded crankshafts will be supplied for service replacement.

**You'll
SPEED WORK
and make
MORE MONEY
with...**



HOMELITE
SELF-PRIMING PUMPS



HOMELITE
DEPENDABLE GENERATORS



HOMELITE
POWERFUL ONE-MAN CHAIN SAWS



HOMELITE
ONE-MAN CONCRETE VIBRATORS



HOMELITE — BOSCH (Germany)
ELECTRIC BUILDER'S HAMMERS

HOMELITE

A **Textron** DIVISION

PORT CHESTER, N. Y., U. S. A.