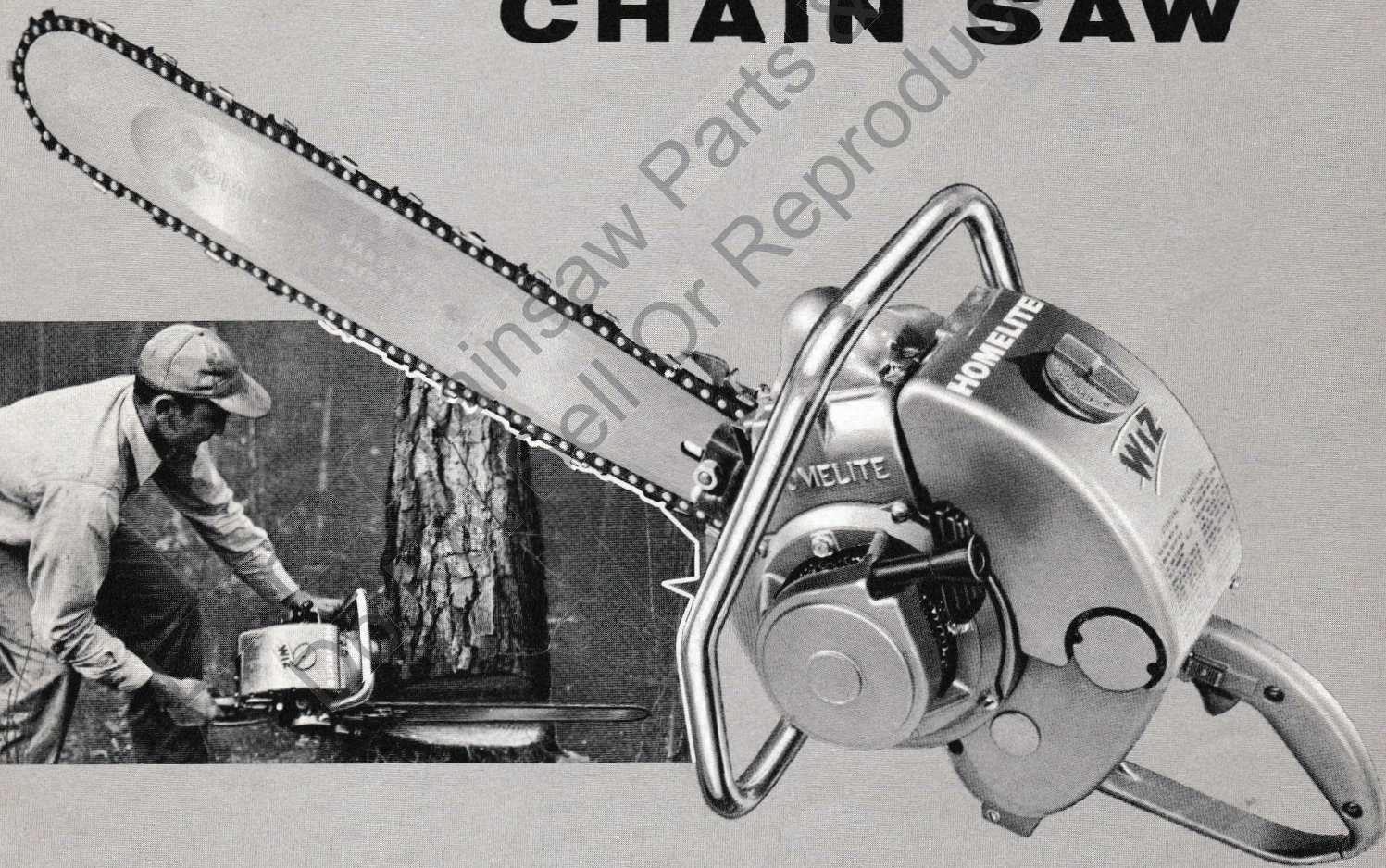


HOMELITE

WIZ

CHAIN SAW



PARTS LIST

FEBRUARY 1959

HOMELITE **WIZ** CHAIN SAW

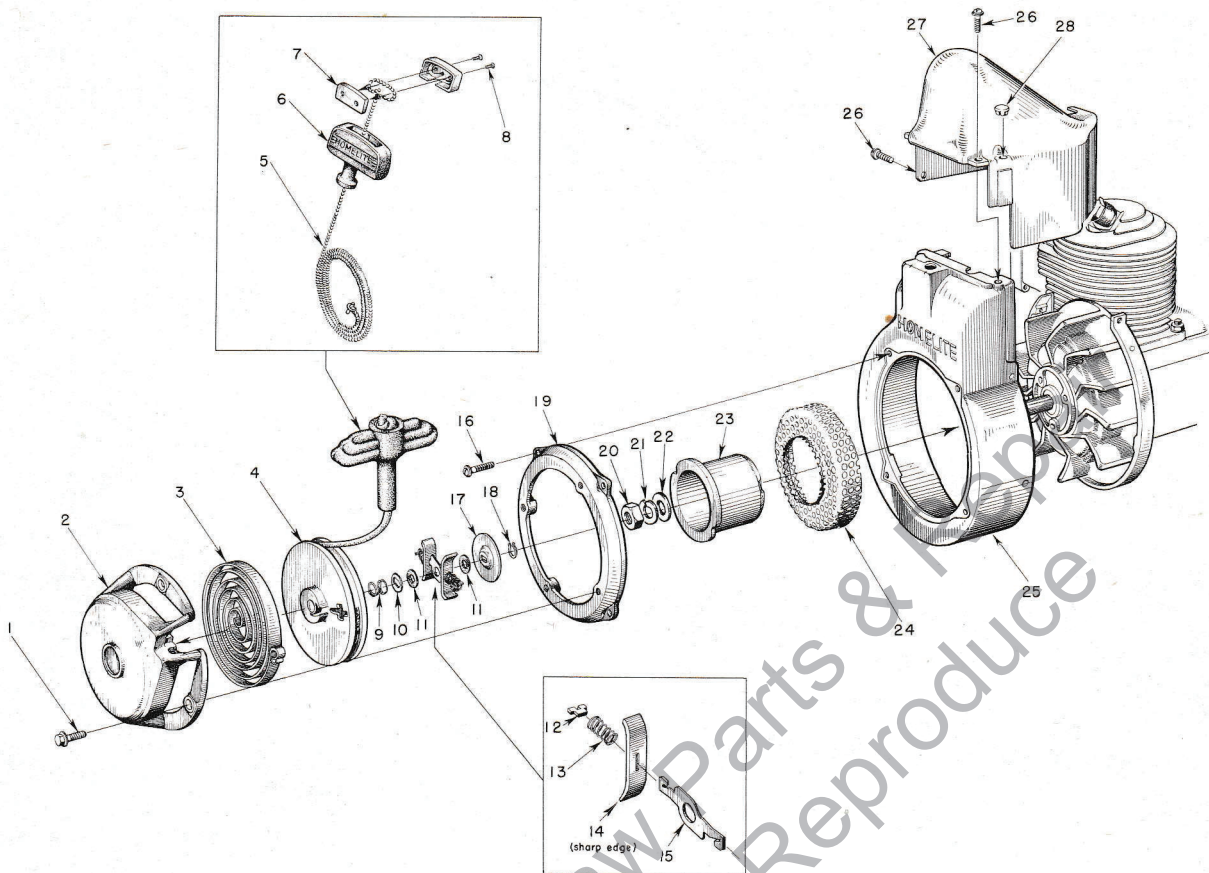


FIGURE 1 — STARTER PARTS

FEBRUARY 1959

Index No.	Part No.	Description	No. Required	Index No.	Part No.	Description	No. Required
1	80681	SCREW — 1/4-20 x 1/2 hex hd.	4	15	56458	LEVER — brake	1
2	56450-2	COVER — pulley	1	16	80576	SCREW — 10-32 x 9/16 pan hd.	4
3	56451	SPRING — rewind	1	17	56462	WASHER — brake retainer	1
4	56452	PULLEY — starter	1	18	56463	RING — retaining	1
5	55898	ROPE — starting	1	19	56531	ADAPTER — starter	1
6	55937	GRIP — starting	1	20	81117	NUT — 5/16-24 hex jam	1
7	A-56081	INSERT — grip, w/screws	1	21	83002	WASHER — 5/16 lock	1
		Includes		22	84067	WASHER — 5/16 flat aluminum	1
8	80619	SCREW	2	23	56534	CUP — starter	1
9	56455	SPRING — brake	1	24	56442	SCREEN — starter	1
10	56456	WASHER — brake	1	25	AA-55208	SHROUD — air	1
11	56457	WASHER — fibre	2	26	80577	SCREW — 8-32 x 3/8 pan hd.	7
12	56461	PLATE — spring retainer	2	27	55015-B	SHIELD — cylinder	1
13	56460	SPRING — friction shoe	2	28	32814	PLUG — button	1
14	56459	PLATE — friction shoe	2				

HOMELITE **WIZ** CHAIN SAW

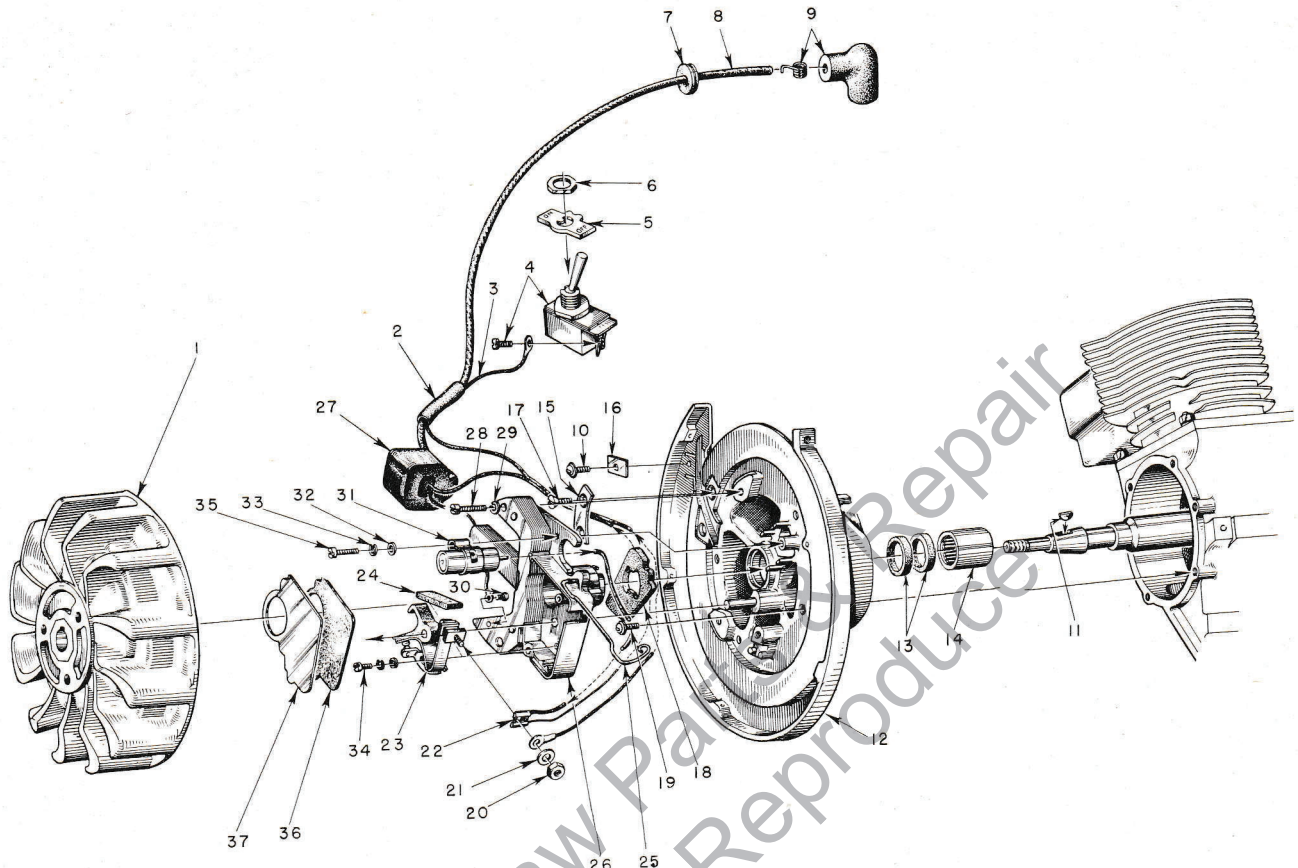


FIGURE 2 — IGNITION SYSTEM

FEBRUARY 1959

Index No.	Part No.	Description	No. Required
1	56214	ROTOR	1
2	55290	SLEEVE—insulating	1
3	55990	LEAD—ground	1
4	AA-72094-A	SWITCH w/screw	1
		Includes	
5	55879	PLATE (on-off)	1
6	72084-A1	NUT	1
7	60929	GROMMET	1
8	55235-A	LEAD—high tension	1
9	A-55373	TERMINAL (sparky)	1
10	80575	SCREW—8-32 x 1/4 pan hd.	1
11	75078	KEY—rotor	1
12	A-56079	BACKPLATE w/pivot post	1
		Includes	
13	71597	SEAL—garlock	2
14	55204	BEARING—needle	1
15	55962	CLAMP—inner	1
	**	TAPE—insulation	1
16	55161	CLAMP—outer	1
17	80598	SCREW—6-32 x 5/16 flat hd.	2
18	55989	WASHER—sealing, felt	1

Index No.	Part No.	Description	No. Required
19	80576	SCREW—10-32 x 9/16 pan hd.	6
20	55982	NUT—terminal	1
21	55983	WASHER—terminal	1
22	*	TERMINAL—jam-tite	1
23	A-55971	POINTS—(set)	1
24	55984	WICK—felt	1
25	55980	CLAMP—dust cover	1
26	55969	BOX—breaker w/core	1
27	55986	COIL	1
28	80660	SCREW—10-24 x 7/8 fil. hd.	2
29	83046	WASHER—#10 lock	3
30	55977	SCREW	1
31	55987	CONDENSER w/terminal	1
32	84048	WASHER—flat	2
33	83060	WASHER—lock	2
34	55985	SCREW—8-32 x 3/8 fil. hd.	1
35	55988	SCREW	1
36	55978-1	GASKET—dust cover	1
37	55979	COVER—dust	1
	80595	SCREW—10-24 x 1/2 fil. hd. stator to backplate	1

*Not available separately: replacement coils and condensers supplied with separate terminals.

**Not available separately.

Always furnish saw model and serial number when ordering parts

HOMELITE **WIZ** CHAIN SAW

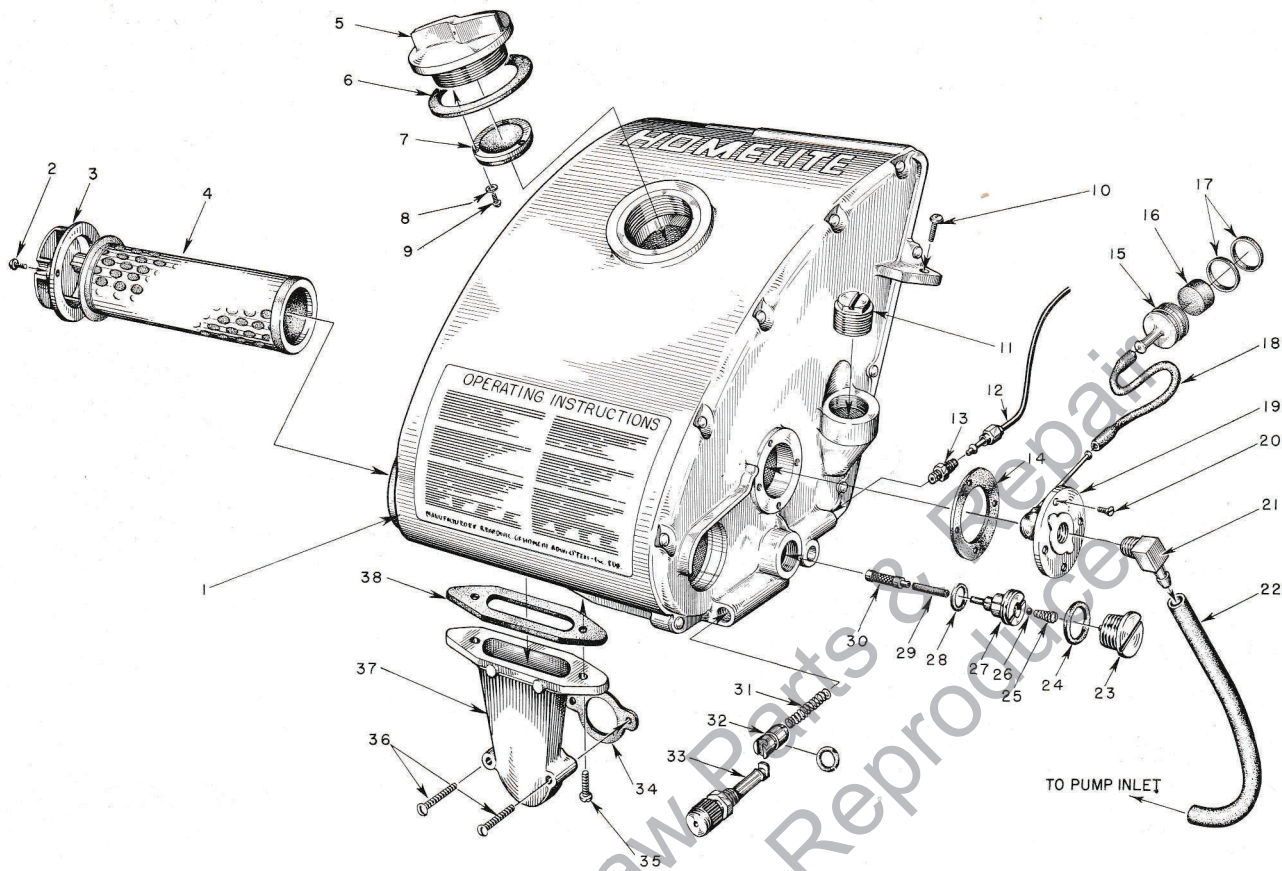


FIGURE 3 — FUEL SYSTEM

FEBRUARY 1959

Index No.	Part No.	Description	No. Required	Index No.	Part No.	Description	No. Required
	56400	DECAL—Homelite	1	17	56196	BUMPER—rubber	2
	56511	DECAL—WIZ	1	18	72107-A	SLEEVE—flexible	1
	55968-A	DECAL—instructions	1	19	AA-72475	FITTING—fuel outlet	1
1	A-55709	FUEL TANK	1	20	80451	SCREW—6-32 x 3/8 flat hd.	4
		Includes		21	74917	ELBOW—fuel connection	1
2	80571	SCREW—6-32 x 3/8 pan hd.	2	22	A-56379	LINE—fuel	1
3	55066-A	CAP—air filter	1	23	AA-55167	CAP—oil supply line	1
4	56532	FILTER—air (wix)	1	24	55107	GASKET	1
5	A-55305	CAP—fuel	1	25	55288-A	SPRING—check valve	1
		Includes		26	25527	BALL—check	1
6	72173	GASKET	1	27	55109-A	SEAT—check ball	1
7	A-55301-C	VALVE—relief	1	28	55110	GASKET	1
8	83083	WASHER—#3 lock	3	29	55133-A	SLEEVE—flexible	1
9	80592	SCREW—3-48 x 1/4 rd. hd.	3	30	AA-55259-A	PICK-UP—oil	1
10	80582	SCREW—8-32 x 5/8 pan hd.	1	31	71762	SPRING—plunger	1
11	55140-A	CAP—oil filler	1	32	A-74406	TUBE—plunger (includes 74388 "O" ring)...	1
12	AA-55191	LINE—oil	1	33	71764	BUTTON—plunger	1
13	A-55824	VALVE—check	1	34	72971-1	GASKET—air elbow	1
14	72174	GASKET	1	35	80572	SCREW—10-32 x 3/8 pan hd.	2
15	A-56200	STRAINER—outlet w/brass nail	1	36	80638	SCREW—10-32 x 1 1/4 pan hd.	2
		Includes		37	55019-2	ADAPTER—air filter	1
16	74374	FILTER—felt	1	38	55059	GASKET—adapter	1

HOMELITE **WIZ** CHAIN SAW

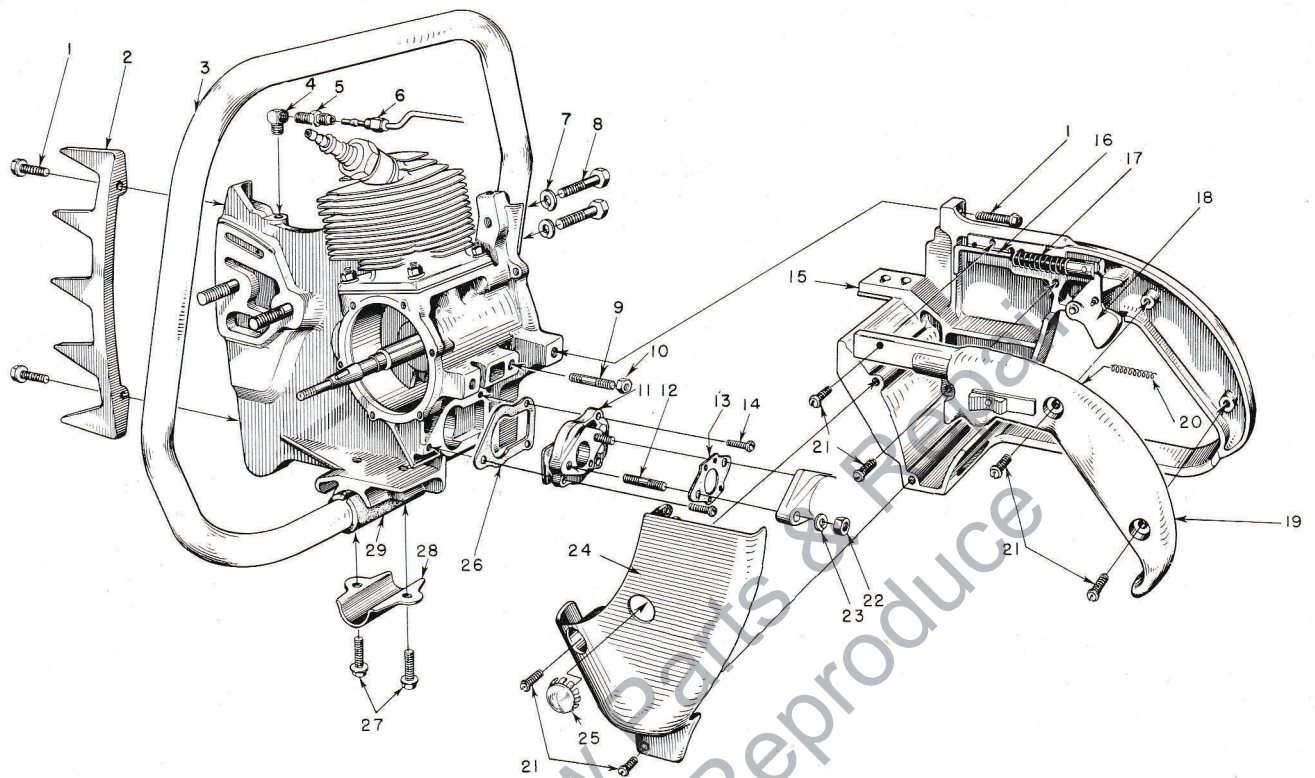


FIGURE 4 — HANDLE, GRIP AND REED VALVE PARTS

FEBRUARY 1959

Index No.	Part No.	Description	No. Required
1	80573	SCREW— $\frac{1}{4}$ -20 x $\frac{13}{16}$ hex hd.	5
2	55103	PLATE—bumper	1
3	AA-55119	HANDLE—flush-cut	1
4	31734	ELBOW—connector	1
5	31733-1	ADAPTER—straight	1
6	AA-55191	LINE—chain oil	1
7	83003	WASHER— $\frac{5}{16}$ lock	2
8	80087	SCREW— $\frac{5}{16}$ -18 x $1\frac{1}{2}$ hex hd.	2
9	56470	STUD—self-threading	2
	84020	WASHER—flat	2
10	81130	NUT— $\frac{1}{4}$ -28 lock	2
11	A-55800-A	ADAPTER—reed valve	1
12	27464	STUD (included in A-55800-A)	2
13	55553	GASKET—carburetor	1
14	80583	SCREW—10-32 x $\frac{3}{4}$ pan hd.	3
15	AA-55281	GRIP—pistol	1
16	56536	ROD—throttle	1
17	55045-A	SPRING	1

Index No.	Part No.	Description	No. Required
18	AA-55207	TRIGGER	1
19	AA-55228	COVER—grip	1
		Includes	
	AA-55282	LOCK — throttle	1
		Includes	
20	72970	SPRING—lock	1
21	80560	SCREW—8-32 x $\frac{1}{2}$ pan hd.	7
22	81013	NUT— $\frac{1}{4}$ -20 hex	2
23	83009	WASHER— $\frac{1}{4}$ lock	2
24	55104-2	SHIELD—carburetor	1
25	56533	PLUG—button	1
26	55116	GASKET—reed valve adapter	1
27	80581	SCREW— $\frac{1}{4}$ -20 x $\frac{5}{8}$ hex. hd.	2
28	55145	CLAMP—handle	1
29	55146	CUSHION—handle	1
	A-55740	BRACE—handle	1

HOMELITE **WIZ** CHAIN SAW

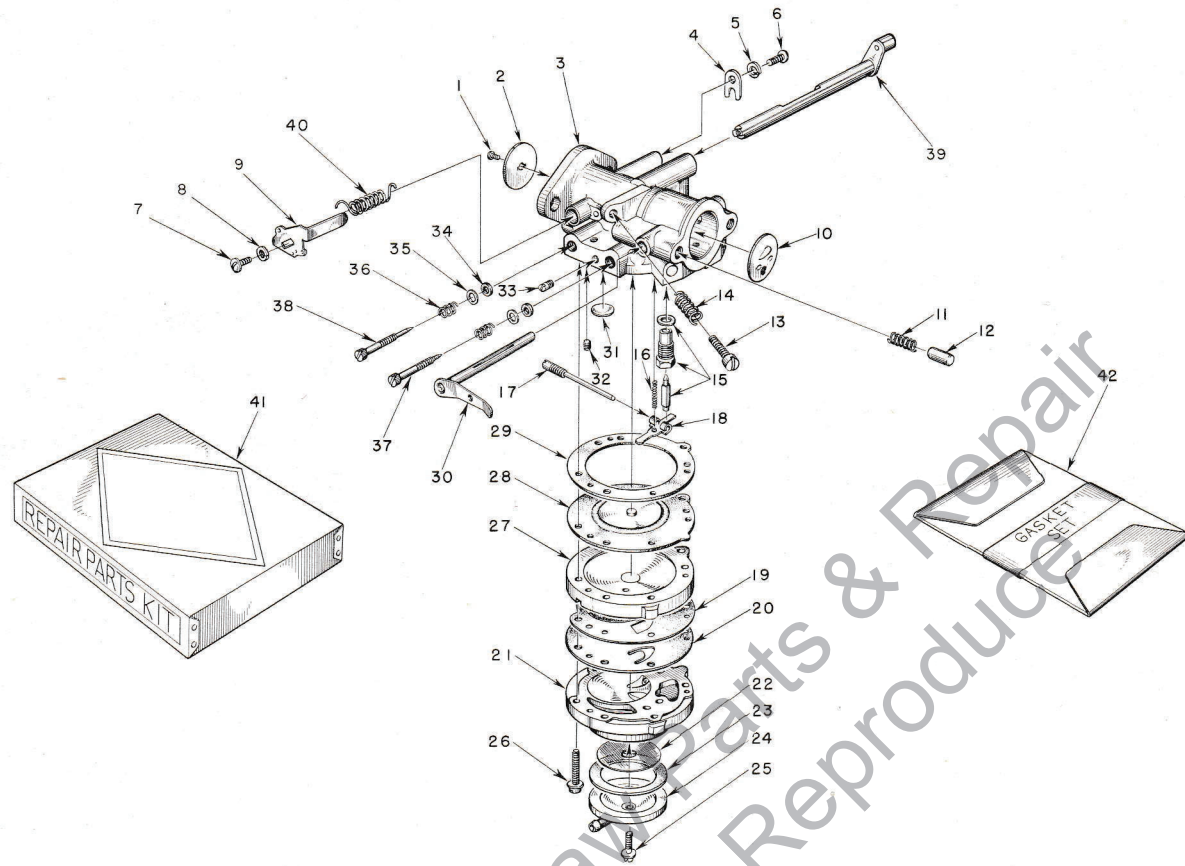


FIGURE 5 — TILLOTSON HL-46B CARBURETOR PARTS

FEBRUARY 1959

Index No.	Part No.	Description	No. Required	Index No.	Part No.	Description	No. Required
	A-56484	CARBURETOR—Till. Model HL-46B	1	20	†55753	DIAPHRAGM—fuel pump	1
		Includes		21	55748	BODY—fuel pump	1
1	*80012	SCREW—throttle shutter	1	22	55752	SCREEN—fuel strainer	1
2	75532	SHUTTER—throttle	1	23	†55751	GASKET—pump strainer	1
3	A-75742	BODY—service	1	24	55750	COVER—fuel pump	1
4	73086	CLIP—throttle shaft	1	25	55756	SCREW—pump cover retaining	1
5	83000	WASHER—#8 lock	1	26	55316	SCREW—body, w/lockwasher	6
6	73088	SCREW—8-32 x 3/16 flat hd.	1	27	55749	COVER—main diaphragm	1
7	*71521	SCREW—4-36 x 1/4 rd. hd.	1	28	†A-55760	DIAPHRAGM—main	1
8	*71522	WASHER—#4 lock	1	29	†55754	GASKET—main diaphragm	1
9	A-75766	SHAFT AND LEVER—throttle	1	30	A-75740	LEVER—choke	1
10	75734	SHUTTER—choke	1	31	30818	PLUG—welch (idle chamber)	1
11	73264	SPRING—choke friction	1	32	55763	PLUG—channel	1
12	71494	PIN—choke friction	1	33	73067	PLUG—drain	1
13	*71509	SCREW—idle stop	1	34	†75733	PACKING—adjustment screw	2
14	*28064	SPRING—idle stop screw	1	35	75735	WASHER—adjustment screw	2
15	*A-55761	INLET NEEDLE AND SEAT	1	36	73075	SPRING—adjustment screw	2
		Includes		37	*75736	SCREW—idle adjustment (lo speed)	1
	55344	GASKET—inlet seat	1	38	*75739	SCREW—main adjustment (hi speed)	1
16	*55759	SPRING—control lever	1	39	77247-1	LEVER—throttle stop	1
17	A-55762	PIN—inlet lever fulcrum	1	40	75756	SPRING—throttle return	1
18	*55747	LEVER—inlet control	1	41	77343	REPAIR PARTS KIT (RK-378)	1
19	55881	GASKET—pump diaphragm	1	42	77342	GASKET SET (GS-145)	1

*Included in Repair Parts Kit RK-378.

†Included in Gasket Set GS-145.

HOMELITE **WIZ** CHAIN SAW

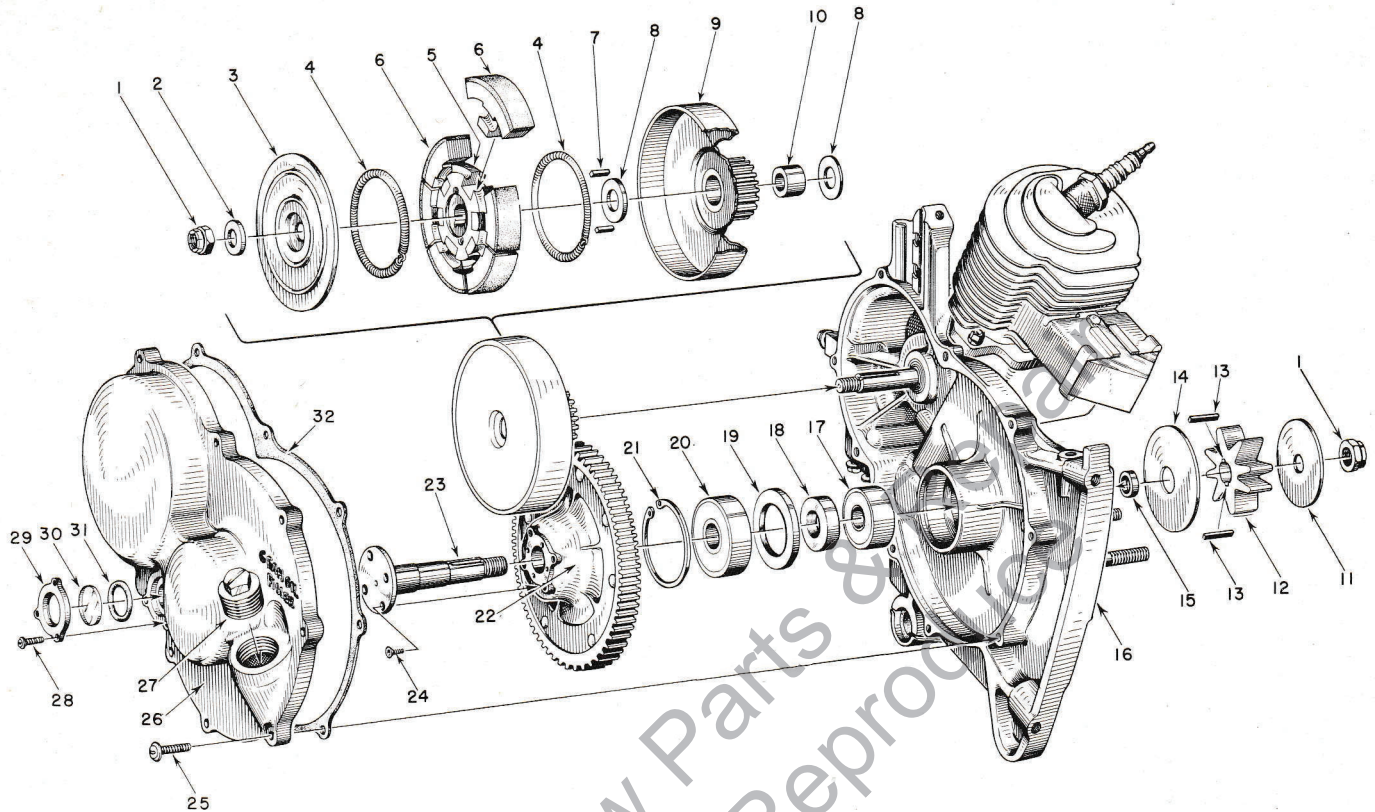


FIGURE 6 — TRANSMISSION

FEBRUARY 1959

Index No.	Part No.	Description	No. Required
1	81116	NUT— $\frac{3}{8}$ -24 flex-lock	2
2	55036	WASHER—clutch	1
3	55126	COVER—clutch	1
	A-55693	CLUTCH	1
		Includes	
4	55123-A	SPRING	2
5	55075	SPIDER	1
6	A-55692	SHOE	6
7	55225-1	KEY—clutch	2
8	55034	WASHER—thrust	2
9	AA-55086	CLUTCH DRUM (and drive gear) 21 teeth ...	1
10	55035	BEARING—drive gear	1
11	55602	WASHER—sprocket (outer)	1
12	55593	SPROCKET	1
13	55482-1	KEY—sprocket	2
14	55601	WASHER—sprocket (inner)	1
15	55586-A	SPACER—sprocket	1
16	*	CRANKCASE	1

Index No.	Part No.	Description	No. Required
17	55184	BEARING—ball	1
18	55024-A	SPACER—bearing	1
19	55025	SHOULDER—spacer	1
20	72040	BEARING—ball	1
21	28922	RING—retaining	1
22	AA-55068-2	DRIVEN GEAR — 75 teeth	1
23	55005-C	SHAFT—sprocket	1
24	80651	SCREW—12-28 x $\frac{3}{8}$ flt hd., socket	4
25	80572	SCREW—10-32 x $\frac{5}{8}$ pan hd.	9
26	AA-55226-A	COVER—gear case	1
		Includes	
27	55140-A	PLUG—oil filler	1
28	80571	SCREW—6-32 x $\frac{3}{8}$ pan hd.	3
29	55098	PLATE—window	1
30	55099	WINDOW—plastic	1
31	55100	GASKET—"O" ring	1
32	55053-A	GASKET—gearcase cover	1

*A-55598—for breakdown see Figure 7—Engine Assembly.

HOMELITE **WIZ** CHAIN SAW

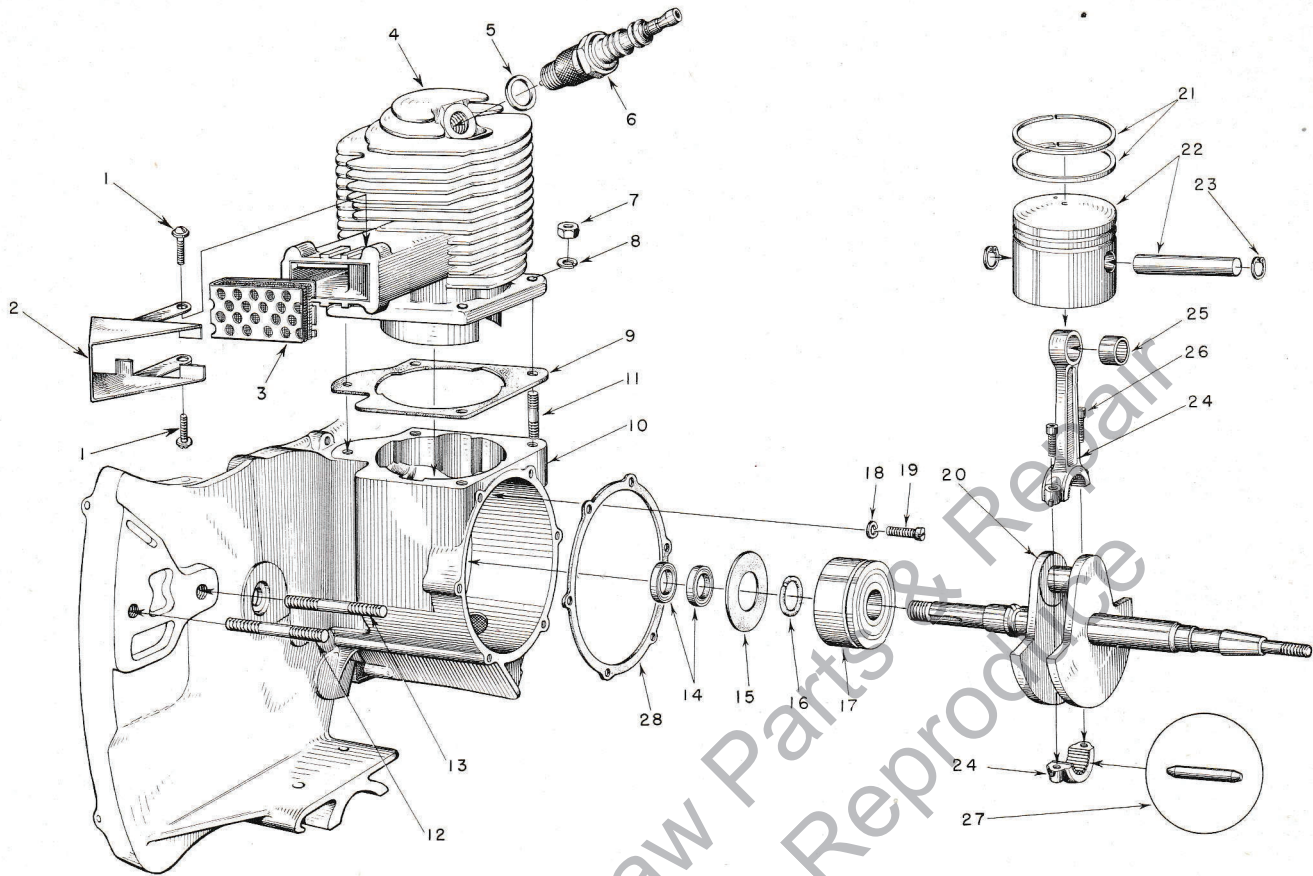


FIGURE 7 — ENGINE ASSEMBLY

FEBRUARY 1959

Index No.	Part No.	Description	No. Required	Index No.	Part No.	Description	No. Required
1	80625	SCREW—10-32 x 1/2 pan hd.	2	16	55047	RING—retaining (main bearing)	1
2	56396	CAP—exhaust flange	1	17	55193	BEARING—main	1
3	A-56068	ELEMENT—muffler	1	18	83061	WASHER—lock, spec. thin.	2
4	55491	CYLINDER	1	19	19238-A	SCREW—main bearing retaining	2
5	25038	GASKET—(included with spark plug)	1	20	56535	CRANKSHAFT	1
6	40190-1	SPARK PLUG—Champion J6J	1	21	55038	RING—piston	2
7	81065-2	NUT—1/4-28 hex	4	22	AA-55279	PISTON and PIN	1
8	83009	WASHER—1/4 lock	4			Includes	
9	55050-A	GASKET—cylinder	1	23	55095	RING—piston pin retaining	2
10	A-55598	CRANKCASE	1	24	AA-55195	CONNECTING ROD	1
		Includes				Includes	
11	56470	STUD—cylinder	4	25	55196	BEARING—piston pin	1
12	55606	STUD—guide bar (long)	1	26	80541	SCREW—8-32 x 1/2 allen cap	2
13	55056-D	STUD—guide bar (short)	1	27	AA-55280	ROLLERS (set of 27)	1
14	71597	SEAL—garlock	2	28	55049	GASKET—back plate	1
15	55048-A	GASKET—crankcase sealing	1				

HOMELITE **WIZ** CHAIN SAW

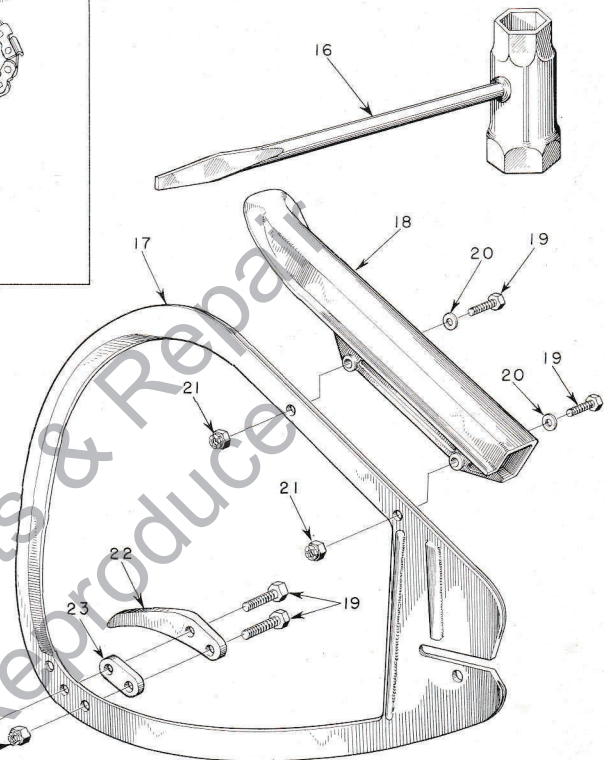
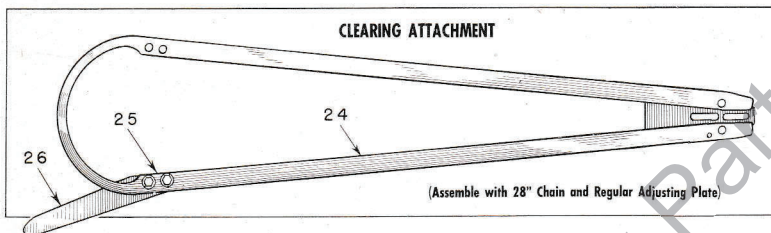
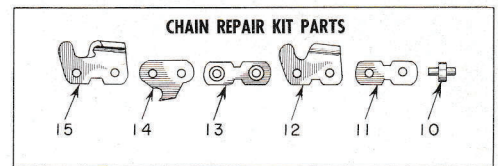
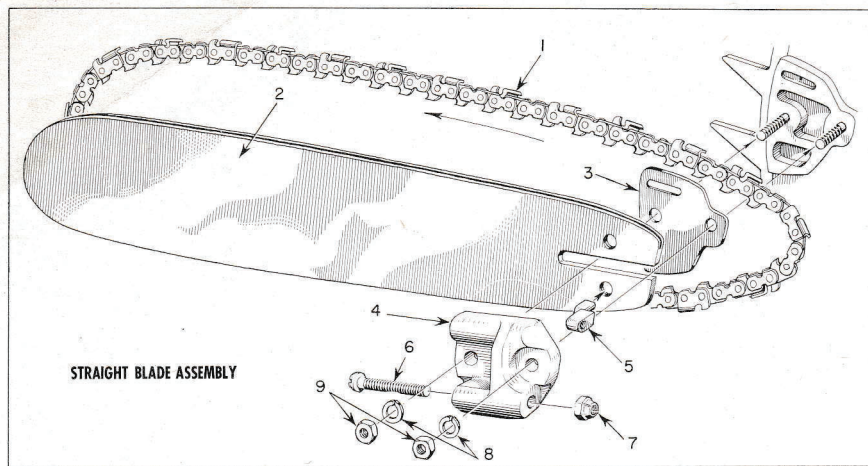


FIGURE 8 — SAW PARTS AND PLUNGE-CUT BOW ATTACHMENTS

FEBRUARY 1959

Index No.	Part No.	Description	No. Required	Index No.	Part No.	Description	No. Required
		OREGON #10C 1/2 PITCH CHAIN		8	83018	WASHER—lock	2
1	A-55338	14" CHAIN—(with kit)	1	9	81089	NUT—3/8-16 hex	2
	AA-73338	18" CHAIN—(with kit)	1		AA-73314	REPAIR KIT—OREGON #10C CHAIN	
	A-55319	20" CHAIN—(with kit)	1			Includes	
	AA-73340	23" CHAIN—(with kit)	1	10	72959	RIVET	4
	*AA-73342	28" CHAIN—(with kit)	1	11	72960	LINK—connecting (plain)	2
2	A-56590	14" BAR—.063	1	12	72964	CUTTER—left	1
	A-55718	18" BAR—hard track plus extra hard tip .063	1	13	AA-72961	LINK—connecting (w/rivets)	2
	A-55720	20" BAR—hard track plus extra hard tip .063	1	14	73383	LINK—drive	1
	A-55723	23" BAR—hard track plus extra hard tip .063	1	15	72963	CUTTER—right	1
	A-55728	28" BAR—hard track plus extra hard tip .063	1	16	22808	WRENCH—combination	1
3	55128	SHIM	1	17	A-56486	16" GUIDE—bow	1
	A-55591	ADJUSTING PLATE	1	18	55948	GUARD	1
		Includes		19	80546	SCREW—5/16-24 x 1 1/4 hex hd.	4
4	55551-B	PLATE—adjusting	1	20	84001	WASHER—5/16 flat	2
5	55552	PIN—guide bar adjusting	1	21	81112	NUT—5/16-24 hex lock	4
6	80617	SCREW—5/16-18 x 2 round hd.	1	22	75728	SPUR	1
7	81123	NUT—hex lock	1	23	75729	SPACER	1
				24	A-56169-A	CLEARING ATTACHMENT	1
						Includes	
				25	80604	SCREW—hex hd. 5/16-24 x 3/4	2
				26	73820	SPUR—plunging	1

*Also fits clearing attachment

†An additional spur and spacer may be used with the guide by using
2- 5/16-24 x 1 3/8 hex hd. screws. (part no. 80606)

Always furnish saw model and serial number when ordering parts

HOMELITE

Authorized Sales and Service Branches

Homelite sales and service factory branches are located throughout the country. Field representatives and factory-trained servicemen are always available, ready and able to keep your Homelites running in top performance at all times. See the "Yellow Pages" for the address and phone number of your nearest Homelite Branch office.

Alabama
Birmingham

California
Alhambra (Los Angeles area)
Fresno
Sacramento
S. San Francisco

Colorado
Denver

Connecticut
Byram
Hartford

Florida
Jacksonville
Miami

Georgia
Atlanta

Illinois
Bloomington
Springfield
Stone Park (Chicago area)

Indiana
Indianapolis

Louisiana
Bossier City
Metairie

Maine
Orono

Maryland
Baltimore

Massachusetts
Allston (Boston area)

Michigan
Detroit
Grand Rapids
Saginaw

Minnesota
St. Paul

Mississippi
Jackson

Missouri
Kansas City
St. Louis

Nebraska
Omaha

New Jersey
North Arlington
Woodbridge

New York
Buffalo
Latham (Albany area)
Rochester
Syracuse

North Carolina
Charlotte
Raleigh

Ohio
Cincinnati
Cleveland
Toledo

Oklahoma
Oklahoma City

Oregon
Portland

Pennsylvania
Altoona
Erie
Harrisburg
Hazleton
Malvern
Philadelphia
Pittsburgh

Tennessee
Knoxville
Memphis

Texas
Cleveland
Dallas
Houston
Lufkin
Silsbee

Utah
North Salt Lake

Virginia
Arlington
Richmond
Roanoke

Washington
Seattle
Spokane

West Virginia
Charleston
Clarksburg

Wisconsin
Milwaukee
Green Bay

DOMINION OF CANADA
TERRY MACHINERY CO., LTD.

Quebec
Montreal

Alberta
Edmonton

British Columbia
Vancouver

New Brunswick
Moncton

Ontario
Ottawa
Toronto

HOMELITE

a division of **Textron Inc.**
PORT CHESTER, N. Y.