

May 1960

HOMELITE CHAIN SAW



WIZ

PARTS LIST

HOMELITE **WIZ** CHAIN SAW

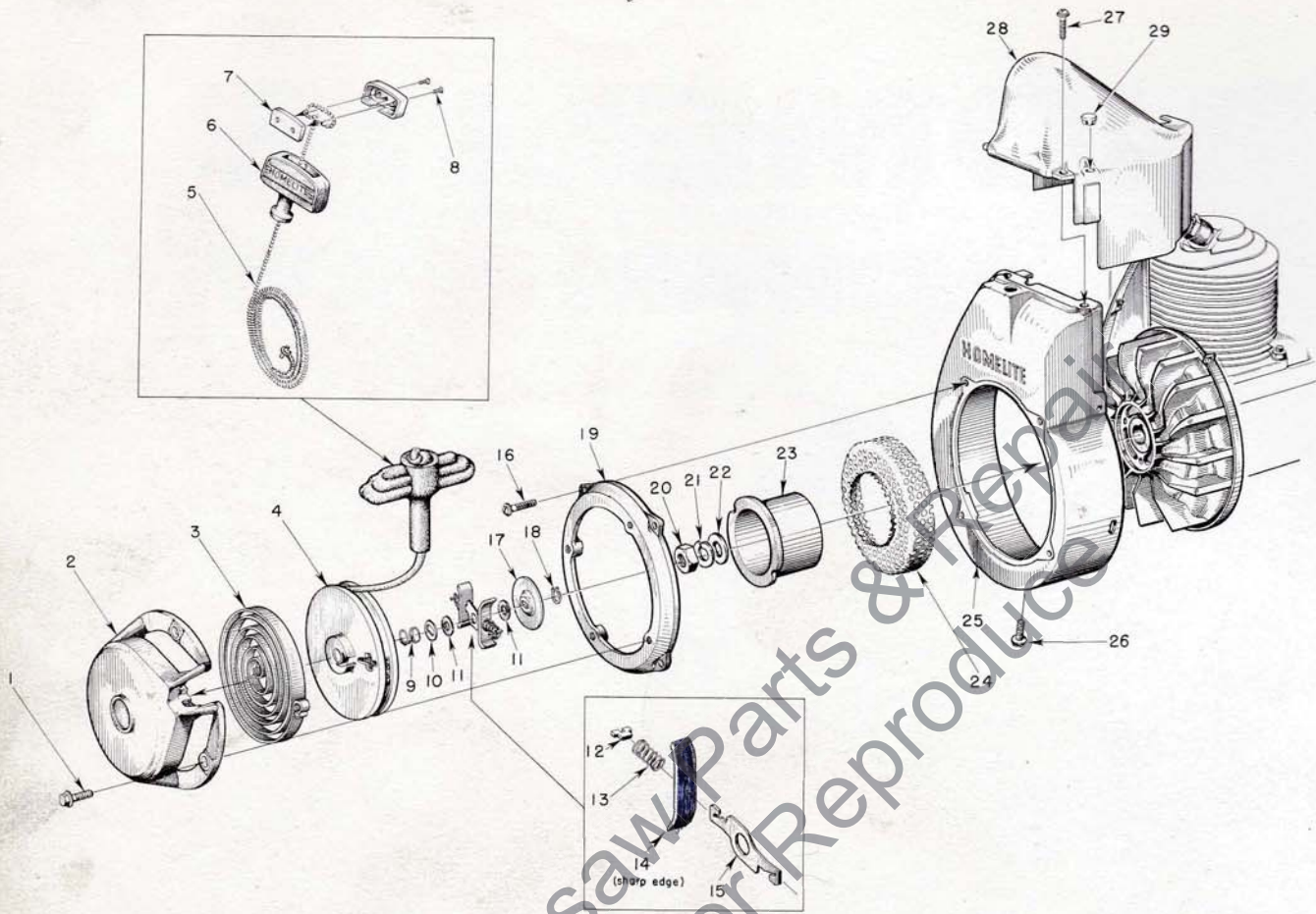


FIGURE 1 — STARTER PARTS

MAY 1960

Index No.	Part No.	Description	No. Required
1	80681	SCREW — 1/4-20 x 1/2 hex hd.....	4
2	56450-2	COVER — pulley.....	1
	56752	DECAL — "HOMELITE".....	1
	57197	DECAL — "WIZ".....	1
3	56451	SPRING — rewind.....	1
4	56452	PULLEY — starter.....	1
5	55898	ROPE — starting.....	1
6	55937	GRIP — starting.....	1
7	A-56081	INSERT — grip, w/screws.....	1
		Includes	
8	80619	SCREW.....	2
9	56455	SPRING — brake.....	1
10	56456	WASHER — brake.....	1
11	56457	WASHER — fibre.....	2
12	56461	PLATE — spring retainer.....	2
13	56460	SPRING — friction shoe.....	2

Index No.	Part No.	Description	No. Required
14	56459	PLATE — friction shoe.....	2
15	56458	LEVER — brake.....	1
16	80576	SCREW — 10-32 x 7/16 pan. hd.....	4
17	56462	WASHER — brake retainer.....	1
18	56463	RING — retaining.....	1
19	56531	ADAPTER — starter.....	1
20	81124	NUT — 3/8-24 hex jam.....	1
21	83018	WASHER — 3/8 lock.....	1
22	84070	WASHER — 3/8 flat aluminum.....	1
23	56534-1	CUP — starter.....	1
24	56442	SCREEN — starter.....	1
25	A-56006	SHROUD — air.....	1
26	80577	SCREW — 8-32 x 3/8 pan hd.....	4
27	80560	SCREW — 8-32 x 1/2 pan hd.....	2
28	55015-2	SHIELD — cylinder.....	1
29	32814	PLUG — button.....	1

NOTE: Complete FM Starter Assembly, less fastening parts, purchasable as A-56540-1.

HOMELITE **WIZ** CHAIN SAW

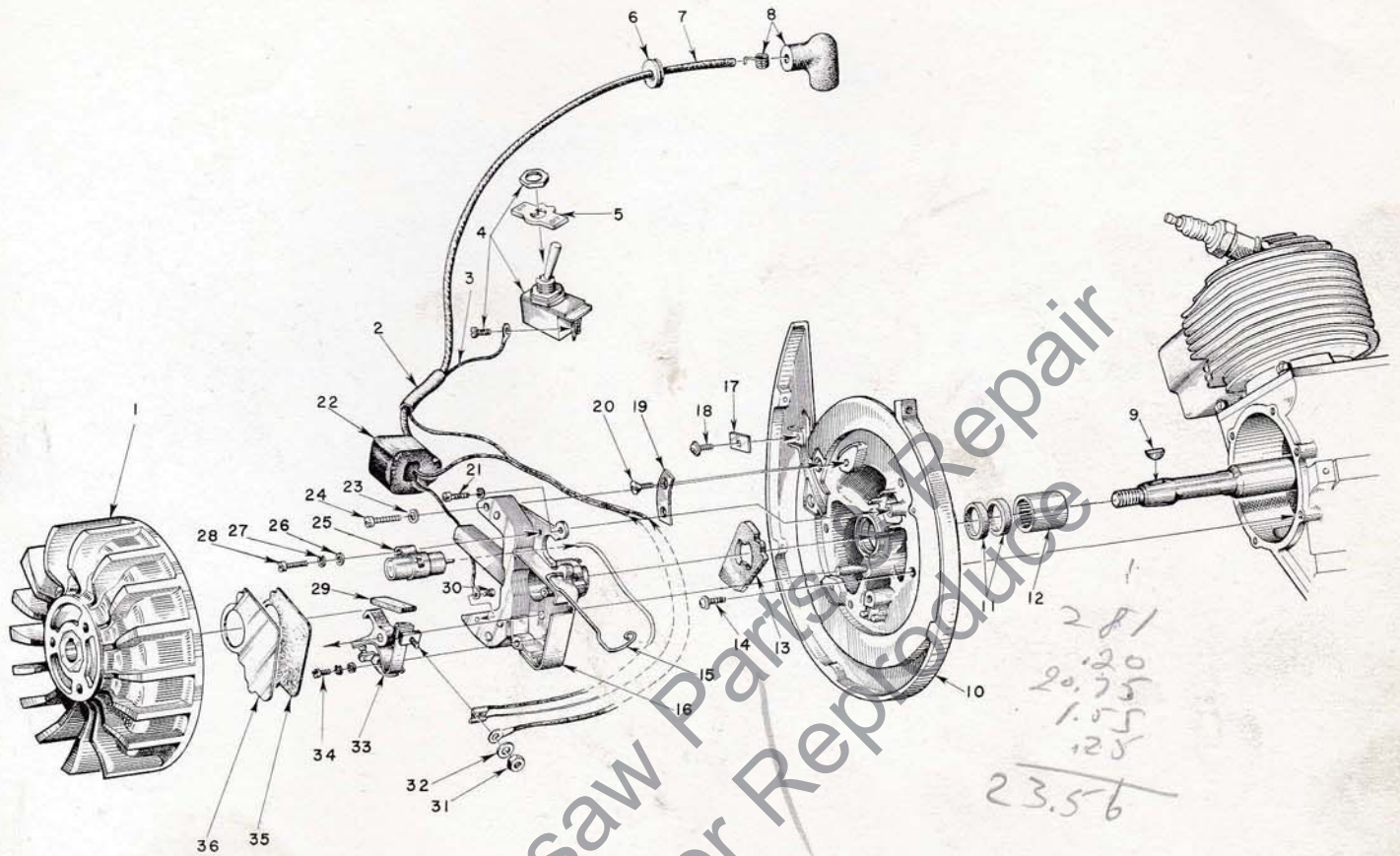


FIGURE 2 — IGNITION SYSTEM

MAY 1960

Index No.	Part No.	Description	No. Required	Index No.	Part No.	Description	No. Required
1	55994	ROTOR.....	1	19	55962	CLAMP — inner.....	1
2	55290	SLEEVE — insulating.....	1	20	80598	SCREW — 6-32 x 3/16 flat hd.....	2
3	55990	LEAD — ground.....	1	21	80595	SCREW — 10-24 x 1/2 fl. hd.....	1
4	A-55877	SWITCH — w/screw.....	1	22	55986	COIL.....	1
5	55879	PLATE (on-off).....	1	23	83046	WASHER — #10 lock.....	3
6	60929	GROMMET.....	1	24	80660	SCREW — 10-24 x 7/8 fl. hd.....	2
7	55235-A	LEAD — high tension.....	1	25	55987	CONDENSER — w/terminal.....	1
8	A-53373	TERMINAL (sparky).....	1	26	84048	WASHER — flat.....	2
9	75078	KEY — rotor.....	1	27	83060	WASHER — lock.....	2
10	A-56165-A	BACKPLATE — w/pivot post.....	1	28	55988	SCREW.....	1
		Includes		29	55984	WICK — felt.....	1
11	71597	SEAL — garlock.....	2	30	55977	SCREW.....	1
12	55204	BEARING — needle.....	1	31	55982	NUT — terminal.....	1
13	55989	WASHER — sealing, felt.....	1	32	55983	WASHER — ferminal.....	1
14	80576	SCREW — 10-32 x 9/16 pan hd.....	6	33	A-55971	POINTS (set).....	1
15	55980	CLAMP — dust cover.....	1	34	55985	SCREW — 8-32 x 3/8 fl. hd.....	1
16	55969	BOX — breaker w/core.....	1	35	55978	GASKET — dust cover.....	1
17	55161	CLAMP — outer.....	1	36	55979	COVER — dust.....	1
18	80575	SCREW — 8-32 x 1/4 pan hd.....	1				

HOMELITE WIZ CHAIN SAW

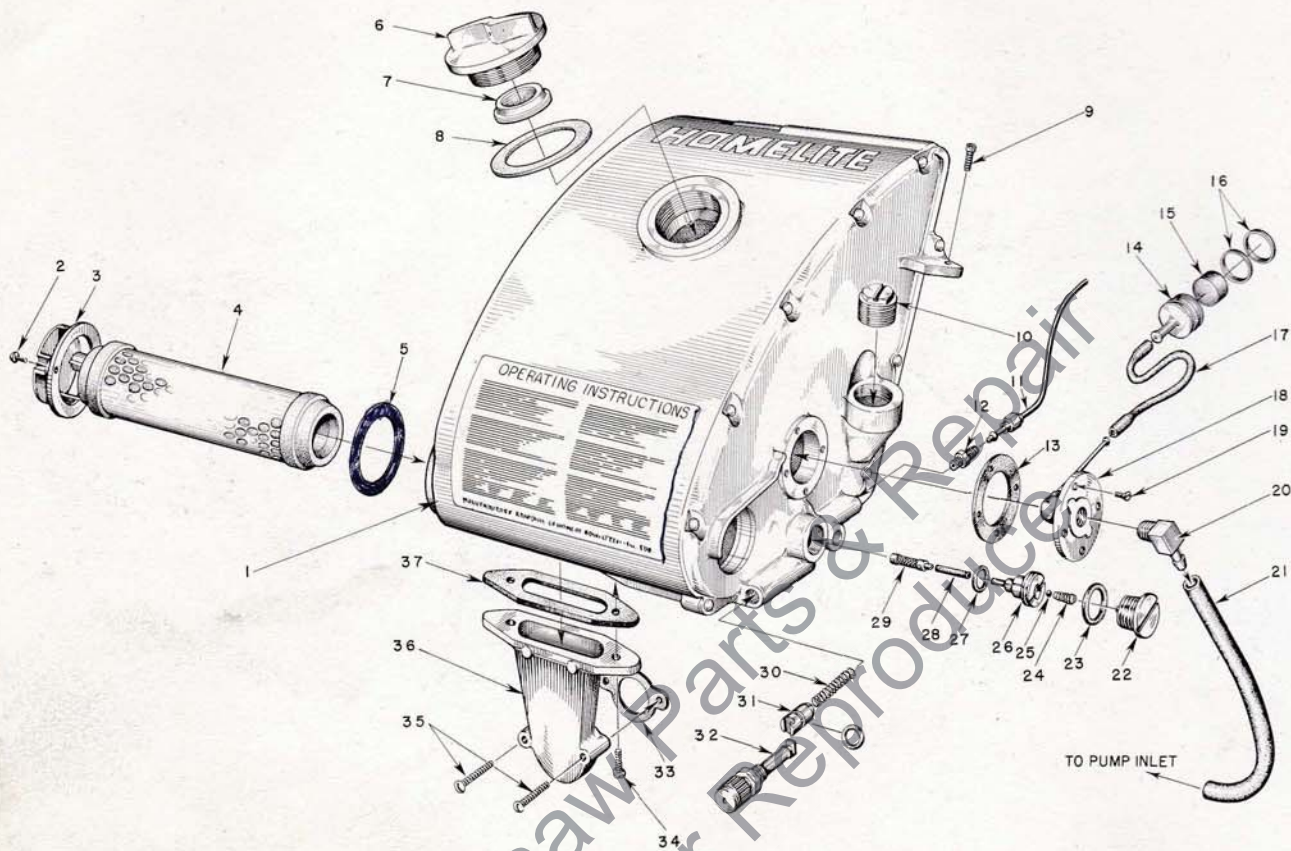


FIGURE 3— FUEL -AIR, AND CHAIN OIL SUPPLY

MAY 1960

Index No.	Part No.	Description	No. Required
1	A-55568	FUEL TANK.....	1
	56400	DECAL — "HOMELITE".....	1
	56551	DECAL — "WIZ".....	1
	56596	DECAL — "Instructions".....	1
2	80630	SCREW — 6-32 x 1/2 pan hd.....	2
3	55066-A	CAP — air filter.....	1
4	57172	FILTER — air.....	1
5	57173	GASKET (cemented to tank).....	1
6	A-56908	CAP — fuel.....	1
		Includes	
7	56865	VALVE — relief.....	1
8	72173	GASKET.....	1
9	80710	SCREW — 12-24 x 5/8 fil. hd.....	1
10	55140-A	CAP — oil filter.....	1
11	AA-55191	LINE — oil.....	1
12	A-55824	VALVE — check.....	1
13	72174	GASKET.....	1
14	A-56200	STRAINER — outlet w/brass nail.....	1
		Includes	
15	74374	FILTER — felt.....	1
16	56196	RING — rubber.....	2

Index No.	Part No.	Description	No. Required
17	72107-A	SLEEVE — flexible.....	1
18	AA-72475	FITTING — fuel outlet.....	1
19	80451	SCREW — 6-32 x 3/8 flat hd.....	4
20	74917	ELBOW — fuel connection.....	1
21	A-56379	LINE — fuel.....	1
22	AA-55167	CAP — oil supply line.....	1
23	55107	GASKET.....	1
24	55288-A	SPRING — check valve.....	1
25	25527	BALL — check.....	1
26	55109-A	SEAT — check ball.....	1
27	55110	GASKET.....	1
28	55133-A	SLEEVE — flexible.....	1
29	AA-55259-A	PICK-UP — oil.....	1
30	71762	SPRING — plunger.....	1
31	A-74406	TUBE — plunger (includes 74388 "O" ring)....	1
32	71764	BUTTON — plunger.....	1
33	72971-1	GASKET — air elbow.....	1
34	80572	SCREW — 10-32 x 5/8 pan hd.....	2
35	80638	SCREW — 10-32 x 1 1/4 pan hd.....	2
36	55019-2	ADAPTER — air filter.....	1
37	55059	GASKET — adapter.....	1

HOMELITE **WIZ** CHAIN SAW

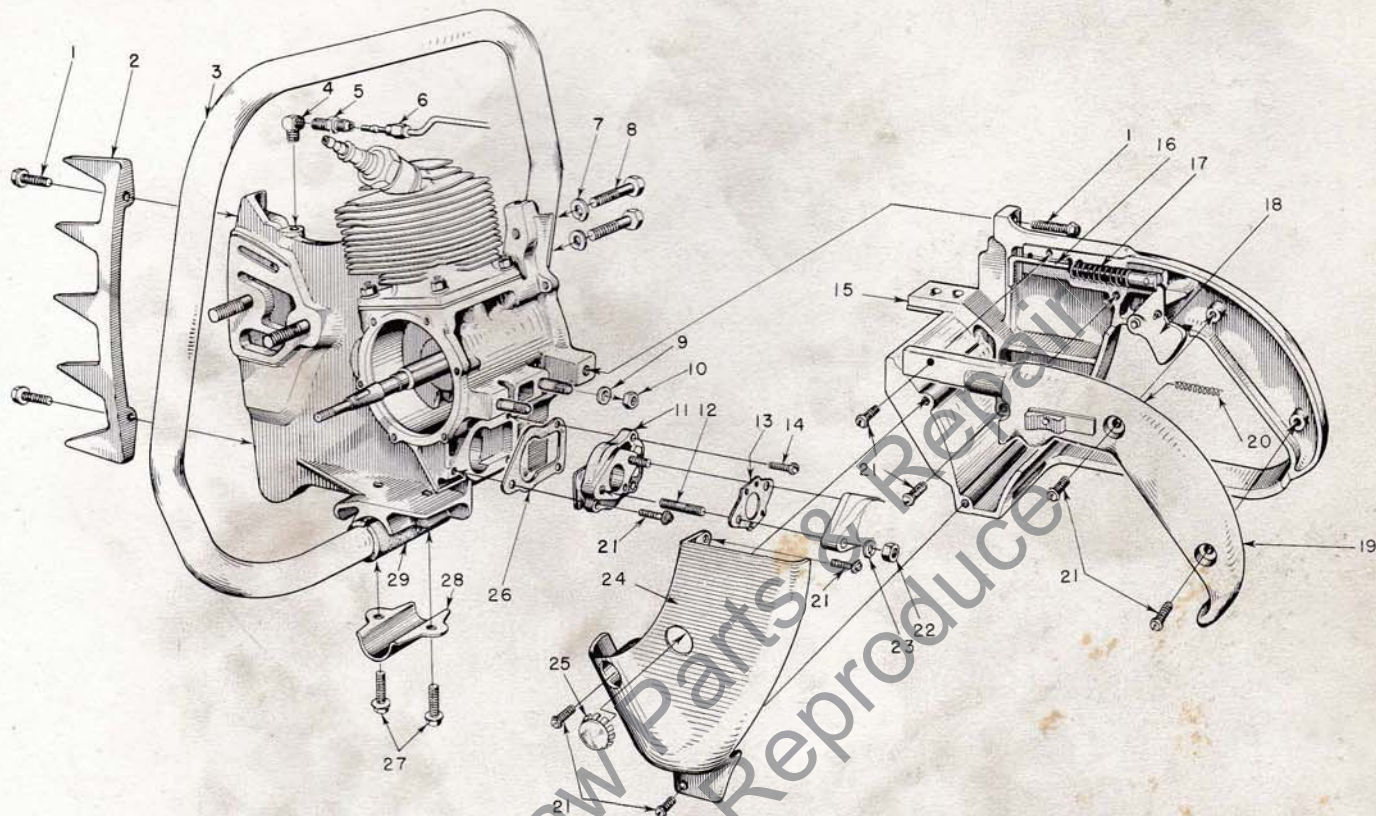


FIGURE 4 — HANDLE, GRIP AND REED VALVE PARTS

MAY 1960

Index No.	Part No.	Description	No. Required	Index No.	Part No.	Description	No. Required
1	80573	SCREW— $\frac{1}{4}$ -20 x $1\frac{3}{16}$ hex hd.	5	17	55045-A	SPRING	1
2	55103	PLATE—bumper	1	18	AA-55207	TRIGGER	1
3	†AA-55119	HANDLE—flush-cut	1	19	AA-55228	COVER—grip	1
4	31734	ELBOW—connector	1			Includes	
5	31733-1	ADAPTER—straight	1		AA-55282	LOCK — throttle	1
6	*	LINE—chain oil	1			Includes	
7	83003	WASHER— $\frac{5}{16}$ lock	2	20	72970	SPRING—lock	1
8	80087	SCREW— $\frac{3}{16}$ -18 x $1\frac{1}{2}$ hex hd.	2	21	80560	SCREW—8-32 x $\frac{1}{2}$ pan hd.	7
9	84004	WASHER— $\frac{1}{4}$ flat	2	22	81013	NUT— $\frac{1}{4}$ -20 hex	2
10	81130	NUT— $\frac{1}{4}$ -28 lock	2	23	83009	WASHER— $\frac{1}{4}$ lock	2
11	A-55800-A	ADAPTER—reed valve	1	24	55104-2	SHIELD—carburetor	1
12	27464	STUD (included in A-55800-A)	2	25	56533	PLUG—button	1
13	55553	GASKET—carburetor	1	26	55116	GASKET—reed valve adapter	1
14	80583	SCREW—10-32 x $\frac{3}{4}$ pan hd.	3	27	80581	SCREW— $\frac{1}{4}$ -20 x $\frac{5}{16}$ hex. hd.	2
15	AA-55281	GRIP—pistol	1	28	55145	CLAMP—handle	1
16	56536	ROD—throttle	1	29	55146	CUSHION—handle	1

†For replacement of Wrap-around Handle order Part No. A-55518.

*For Part No., see Figure 3, Index No. 11.

HOMELITE **WIZ** CHAIN SAW

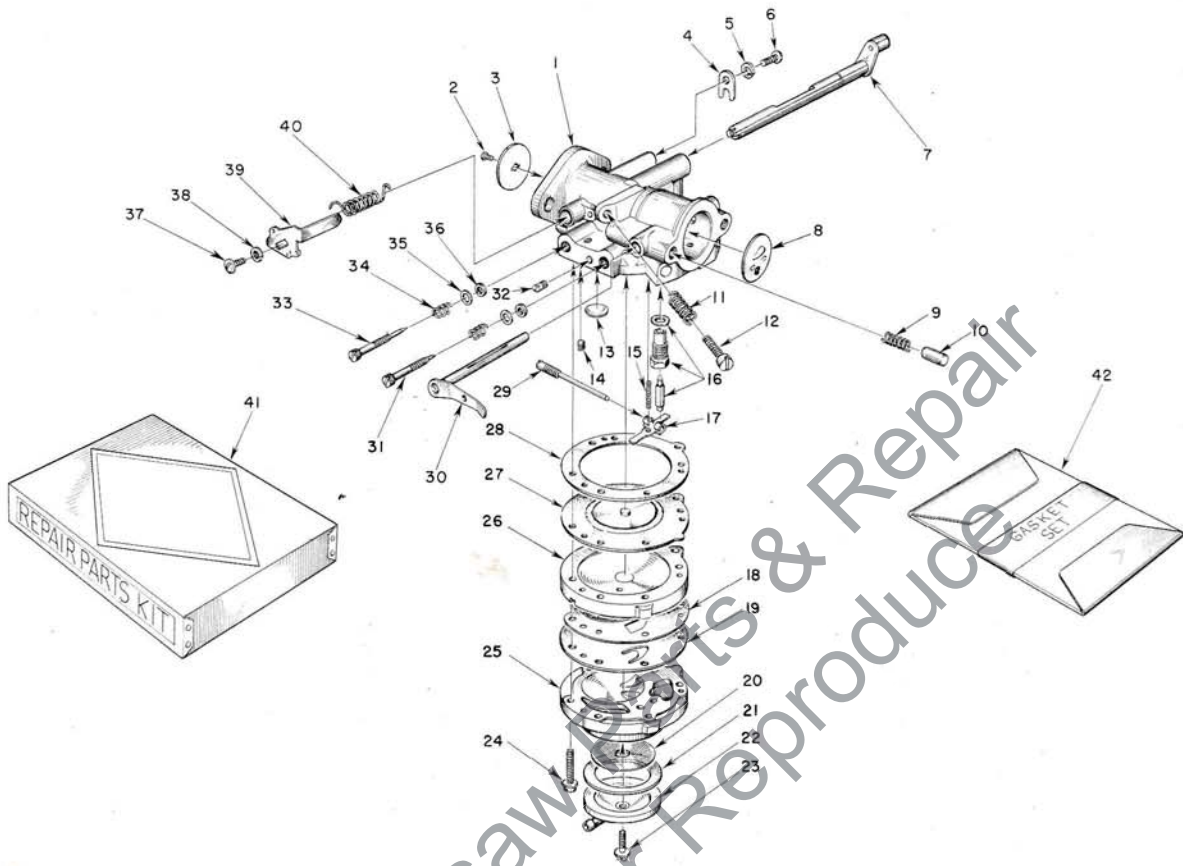


FIGURE 5 — TILLOTSON CARBURETOR

MAY 1960

Index No.	Part No.	Description	No. Required
1	A-56484	CARBURETOR — Tillotson.....	1
		Includes	
2	*80012	SCREW — throttle shutter.....	1
3	75532	SHUTTER — throttle.....	1
4	73086	CLIP — throttle shaft.....	1
5	83000	WASHER — #8 lock.....	1
6	73088	SCREW — 8-32 x 3/8 flat hd.....	1
7	A-75766	SHAFT & LEVER — throttle.....	1
8	75734	SHUTTER — choke.....	1
9	73264	SPRING — choke friction.....	1
10	71494	PIN — choke friction.....	1
11	*28064	SPRING — idle stop screw.....	1
12	*71509	SCREW — idle stop.....	1
13	30818	PLUG — welch (idle chamber).....	1
14	55763	PLUG — channel.....	1
15	*55759	SPRING — control lever.....	1
16	*A-55761	INLET NEEDLE AND SEAT.....	1
		Includes	
	55344	GASKET — inlet seat.....	1
17	*55747	LEVER — inlet control.....	1
18	55881	GASKET — pump diaphragm.....	1
19	*55753	DIAPHRAGM — fuel pump.....	1

Index No.	Part No.	Description	No. Required
20	55752	SCREEN — fuel strainer.....	1
21	*55751	GASKET — pump strainer.....	1
22	55750	COVER — fuel pump.....	1
23	55756	SCREW — pump cover retaining.....	1
24	55316	SCREW — body w/lockwasher.....	6
25	55748	BODY — fuel pump.....	1
26	55749	COVER — main diaphragm.....	1
27	*A-55760	DIAPHRAGM — main.....	1
28	*55754	GASKET — main diaphragm.....	1
29	A-55762	PIN — inlet lever fulcrum.....	1
30	*A-75740	LEVER — choke.....	1
31	*75736	SCREW — idle adjustment (lo speed).....	1
32	73067	PLUG — drain.....	1
33	*75739	SCREW — main adjustment (hi speed).....	1
34	73075	SPRING — adjustment screw.....	2
35	75735	WASHER — adjustment screw.....	2
36	*75733	PACKING — adjustment screw.....	2
37	*71521	SCREW — 4-36 x 1/4 rd. hd.....	1
38	*71522	WASHER — #4 lock.....	1
39	77247-1	LEVER — throttle stop.....	1
40	75756	SPRING — throttle return.....	1
41	77343	REPAIR PARTS KIT (RK-378).....	1
42	*77342	GASKET SET (GS-145).....	1

*Included in Repair Parts Kit RK-378.

HOMELITE **WIZ** CHAIN SAW

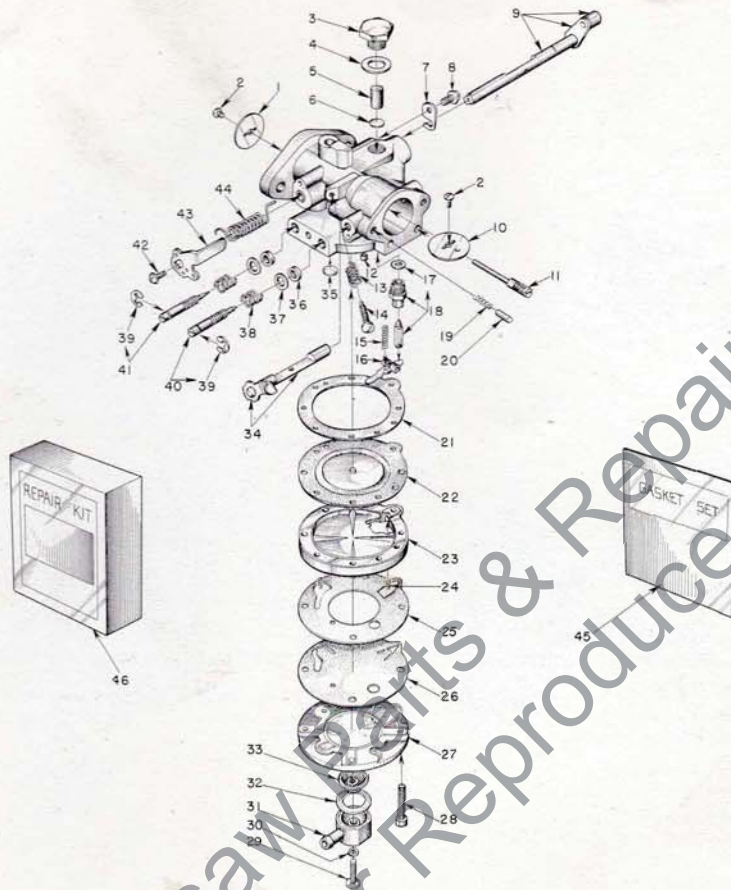


FIGURE 6 — BROWN CARBURETOR

MAY 1960

Index No.	Part No.	Description	No. Required	Index No.	Part No.	Description	No. Required
	A-56505-A	CARBURETOR — BROWN	1	23	77371-A	COVER — main diaphragm	1
		Includes		24	77405	SPRING — flapper valve tension	2
1	74980	SHUTTER — throttle	1	25	*77305	GASKET — pump body	1
2	77044	SCREW — shutter, 4-40 x 1/8 rd. hd.	2	26	*77304	DIAPHRAGM — pump	1
3	*77306	SCREW — plug	1	27	A-77374	BODY — fuel pump	1
4	*77307	GASKET — plug screw	1	28	77160	SCREW — body, 6-32 x 3/4 fil. hd.	4
5	*77308	FILTER — felt	1	29	77320	SCREW — fuel connection	1
6	*77317	SCREEN — filter	1	30	*74997	GASKET — fibre	1
7	*74981	CLIP — throttle shaft	1	31	77318	TURRET — fuel inlet connection	1
8	*77041	SCREW — throttle clip, 6-32 x 3/16 pan hd.	1	32	*77319	GASKET — inlet connection	1
9	A-77253	SHAFT — throttle	1	33	77376	SCREEN — fuel inlet	1
10	74991	SHUTTER — choke	1	34	A-77322	SHAFT & LEVER — choke	1
11	*A-77326	PIN — fulcrum	1	35	*74977	PLUG — Welch (large)	1
12	*77381	CUP — restriction (main channel)	1	36	*77007	RING — square	2
13	77010	SPRING — idle speed screw	1	37	*77006	WASHER — adjustment packing	2
14	77040	SCREW — idle speed, 6-32 x 1/16 rd. hd.	1	38	*77005	SPRING — adjustment compression	2
15	*77015	SPRING — diaphragm lever tension	1	39	77004	CLIP — spring retaining	2
16	*77016	LEVER — diaphragm	1	40	*A-77328	SCREW — main adjusting, w/77004 clip	1
17	*77346	GASKET — copper	1	41	*A-77251	SCREW — idle adjusting, w/77004 clip	1
18	*A-77327	NEEDLE & SEAT — inlet w/gasket	1	42	*77042	SCREW — idle stop	1
19	77017	SPRING — choke friction	1	43	77247	LEVER — throttle stop	1
20	77018	PIN — choke friction	1	44	*77332	SPRING — throttle return	1
21	*77368	GASKET — main diaphragm	1	45	*77336	GASKET SET (BGS-152)	1
22	*A-77370	DIAPHRAGM — main	1	46	77337	REPAIR PARTS KIT (BRK-155)	1

*Included in Repair Parts Kit

NOTE: When installing replacement carburetor A-56505-A, remove friction spring (not shown) from throttle shaft and replace with throttle return spring #77332 (illustrated).

HOMELITE **WIZ** CHAIN SAW

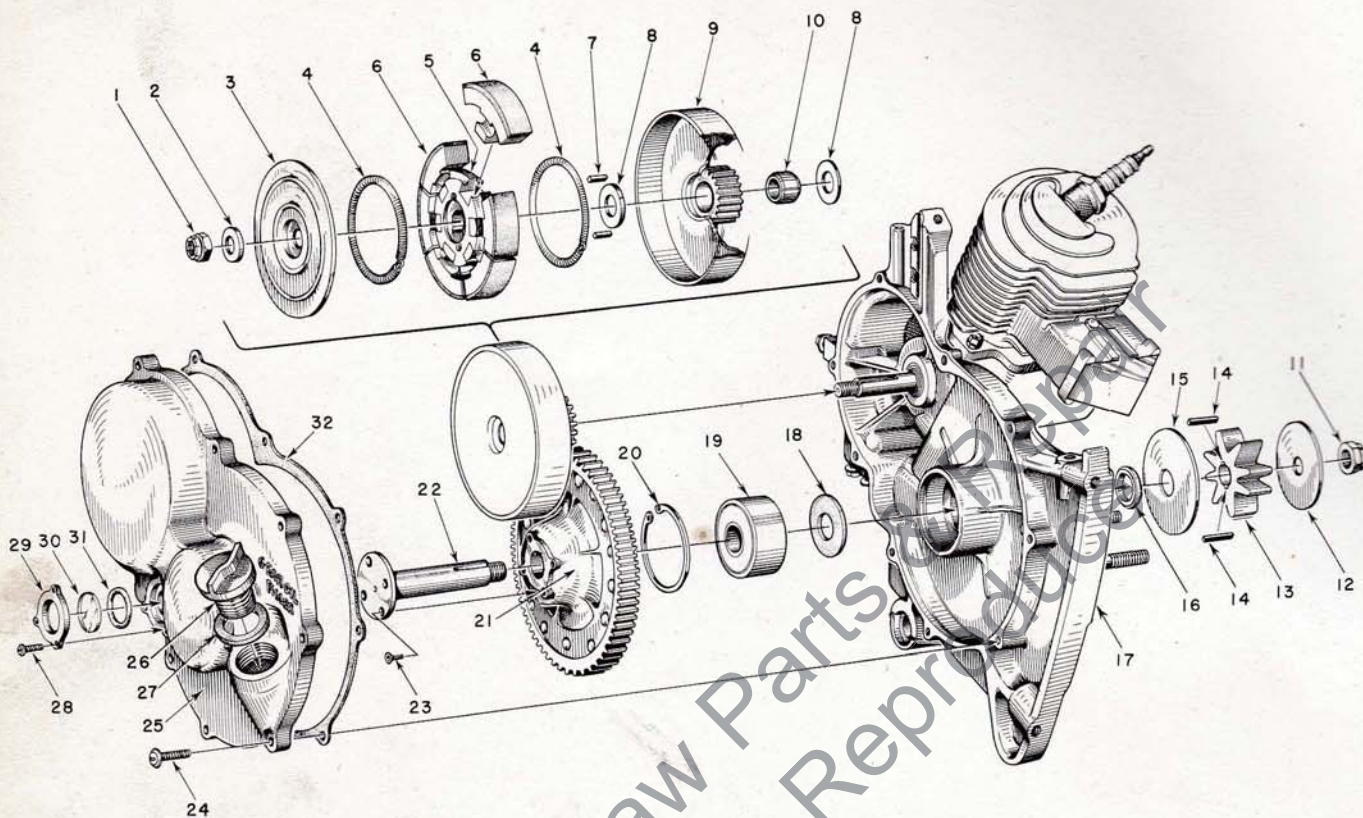


FIGURE 7 — TRANSMISSION

MAY 1960

Index No.	Part No.	Description	No. Required
1	81116	NUT — 3/8-24 flex lock	1
2	55036	WASHER — clutch	1
3	55126-A	COVER — clutch	1
4	55123-A	SPRING	2
5	55075-3	SPIDER	1
6	A-55692	SHOE	6
7	55225-1	KEY — clutch	2
8	56132	WASHER — thrust	2
9	A-56849	CLUTCH DRUM (and drive gear) 21 teeth	1
10	56133	BEARING — drive gear	1
11	81101	NUT — 1/2-20 flex lock	1
12	56077	WASHER — sprocket (outer)	1
13	55593-2	SPROCKET (8 tooth)	1
14	56076-1	KEY — sprocket	2
15	56074	WASHER — sprocket (inner)	1
16	56071	SPACER — sprocket	1
17	*	CRANKCASE	1

Index No.	Part No.	Description	No. Required
18	56072	SEAL — formica	1
19	56219-S	BEARING — ball	1
20	28922	RING — retaining	1
21	A-56824	DRIVEN GEAR	1
22	56070	SHAFT — sprocket	1
23	80651	SCREW — 12-28 x 3/8 flat hd., socket	4
24	80572	SCREW — 10-32 x 5/8 pan hd.	9
25	AA-55226-B	COVER — gear case	1
		Includes	
26	A-56580	CAP — oil filler	1
		Includes	
27	56607	GASKET — filler cap	1
28	80548	SCREW — 6-32 x 3/8 binder hd.	3
29	55098	PLATE — window	1
30	55099	WINDOW — plastic	1
31	55100	GASKET — "O" ring	1
32	55053-A	GASKET — gearcase cover	1

*A-57099 — for breakdown, see Figure 8 — Engine Assembly.

HOMELITE **WIZ** CHAIN SAW

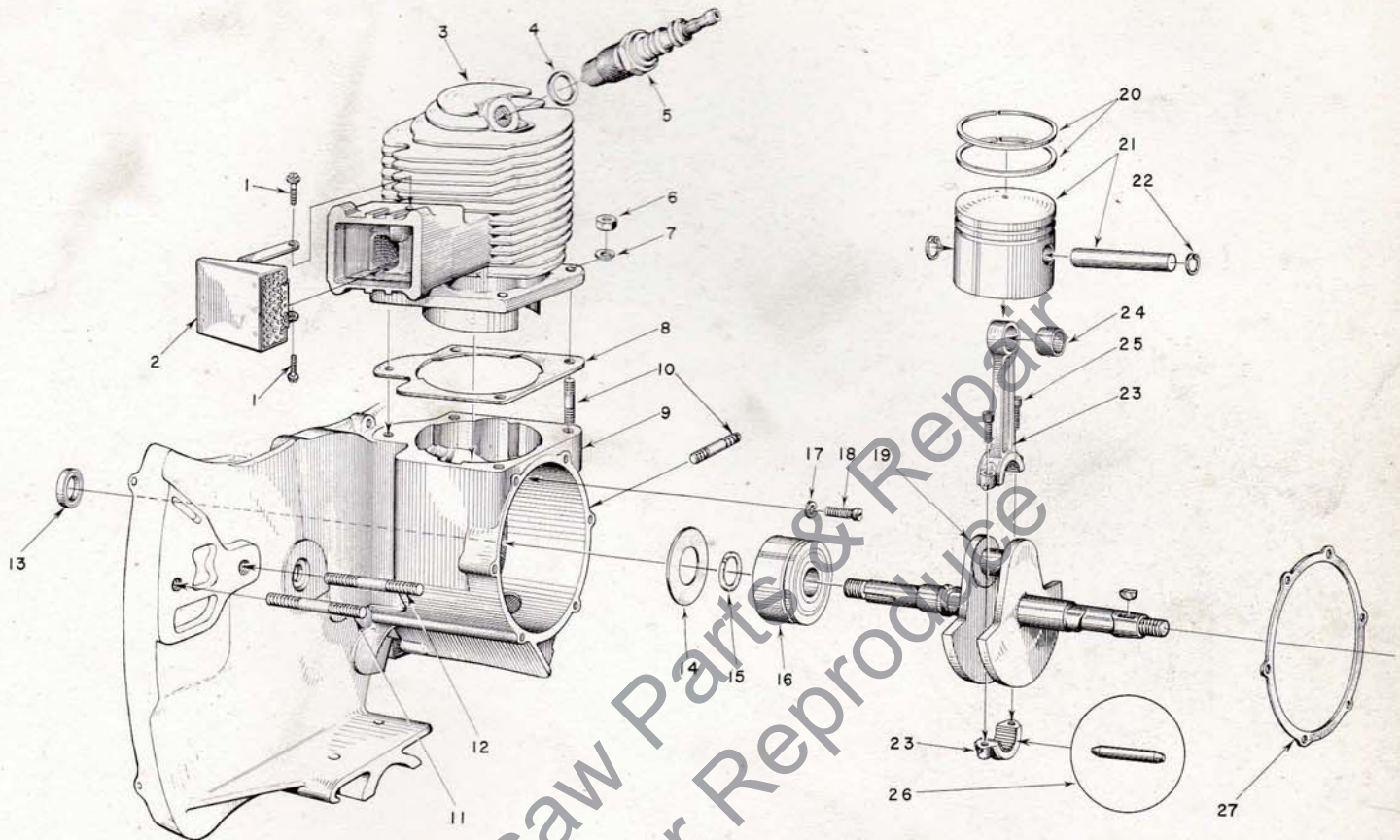


FIGURE 8 — ENGINE ASSEMBLY

MAY 1960

Index No.	Part No.	Description	No. Required
1	80625	SCREW — 10-32 x 1/2 pan hd.	2
2	A-56613-A	CAP — exhaust flange	1
3	55491	CYLINDER	1
4	25038	GASKET (included with spark plug)	1
5	40190-S	SPARK PLUG — Champion J6J	1
6	81065-2	NUT — 1/4-28 hex	4
7	83009	WASHER — 1/4 lock	4
8	55050-A	GASKET — cylinder	1
9	A-57099	CRANKCASE	1
		Includes	
10	55871	STUD — cylinder	6
11	57051	STUD — guide bar	1
12	57052	STUD — guide bar	1
13	56134	SEAL — garlock	1
14	55048-A	GASKET — crankcase sealing	1

Index No.	Part No.	Description	No. Required
15	56109	RING — retaining (main bearing)	1
16	56097-S	BEARING — main	1
17	83061	WASHER — lock, spec. thin	2
18	19238-A	SCREW — main bearing, retaining	2
19	57095	CRANKSHAFT	1
20	55038	RING — piston	2
21	AA-55279	PISTON and PIN	1
		Includes	
22	55095	RING — piston pin retaining	2
23	AA-55195	CONNECTING ROD	1
		Includes	
24	55196	BEARING — piston pin	1
25	80541	SCREW — 8-32 x 1/2 allen cap	2
26	AA-55280	ROLLERS (set of 27)	1
27	55049	GASKET — back plate	1

HOMELITE **WIZ** CHAIN SAW

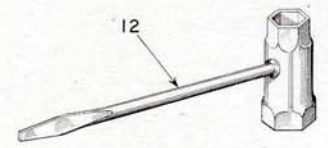
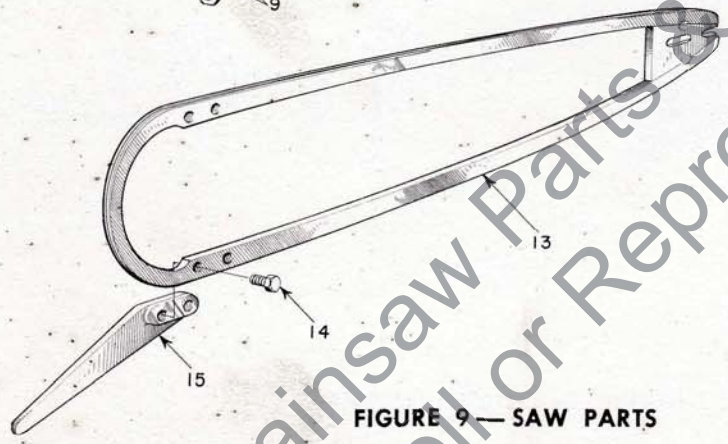
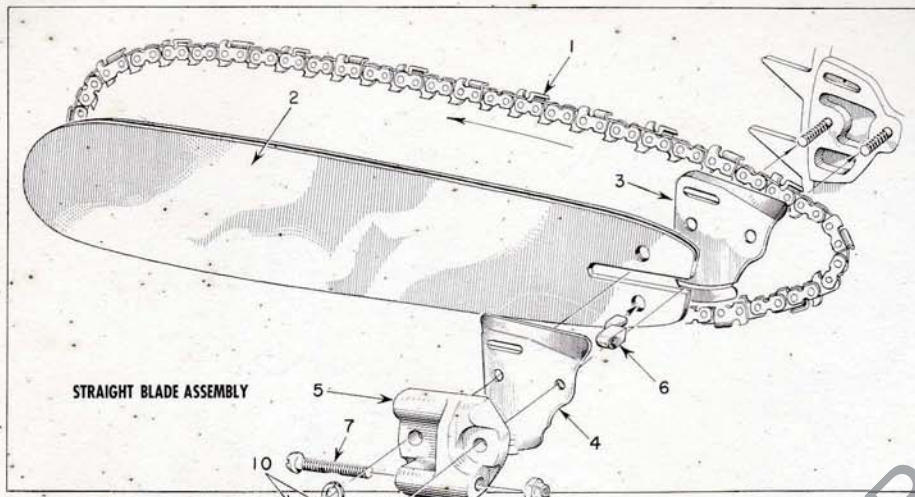


FIGURE 9 — SAW PARTS

MAY 1960

Index No.	Part No.	Description	No. Required	Index No.	Part No.	Description	No. Required
		OREGON #10c 1/2" PITCH CHAIN		3	56956	PLATE — guide bar (inner)	1
1	A-55338	14" CHAIN — (w/kit)	1	4	**56957	PLATE — guide bar (outer)	1
	AA-73338	18" CHAIN — (w/kit)	1		A-55591	ADJUSTING PLATE	1
	A-55319	20" CHAIN — (w/kit)	1			Includes	
	AA-73340	23" CHAIN — (w/kit)	1	5	55551-B	PLATE — adjusting	1
	*AA-73342	28" CHAIN — (w/kit)	1	6	55552	PIN — guide bar adjusting	1
		OREGON #32c 1/2" PITCH MICROBIT CHAIN		7	80617	SCREW — 5/16-18 x 2 round hd.	1
1	A-52390	14" MICROBIT CHAIN — (w/kit)	1	8	81123	NUT — hex lock	1
	A-52391	18" MICROBIT CHAIN — (w/kit)	1	9	83018	WASHER — lock	2
	A-52393	20" MICROBIT CHAIN — (w/kit)	1	10	81089	NUT — 3/8-16 hex	2
	A-52395	23" MICROBIT CHAIN — (w/kit)	1	11	55291-B	OIL — gear (pint can SAE-90)	1
	A-52397	28" MICROBIT CHAIN — (w/kit)	1	12	22808	WRENCH — combination	1
2	A-56590	14" BAR — .063	1	13	A-56169-A	CLEARING ATTACHMENT	1
	A-55718	18" BAR — hard track plus extra hard tip .063	1			Includes	
	A-55720	20" BAR — hard track plus extra hard tip .063	1	14	80604	SCREW — hex hd. 5/16-24 x 3/4	2
	A-55723	23" BAR — hard track plus extra hard tip .063	1	15	73820	SPUR — plunging	1
	A-55728	28" BAR — hard track plus extra hard tip .063	1				

*Also fits clearing attachment.
 **Do not use when mounting bow guide.

HOMELITE **WIZ** CHAIN SAW

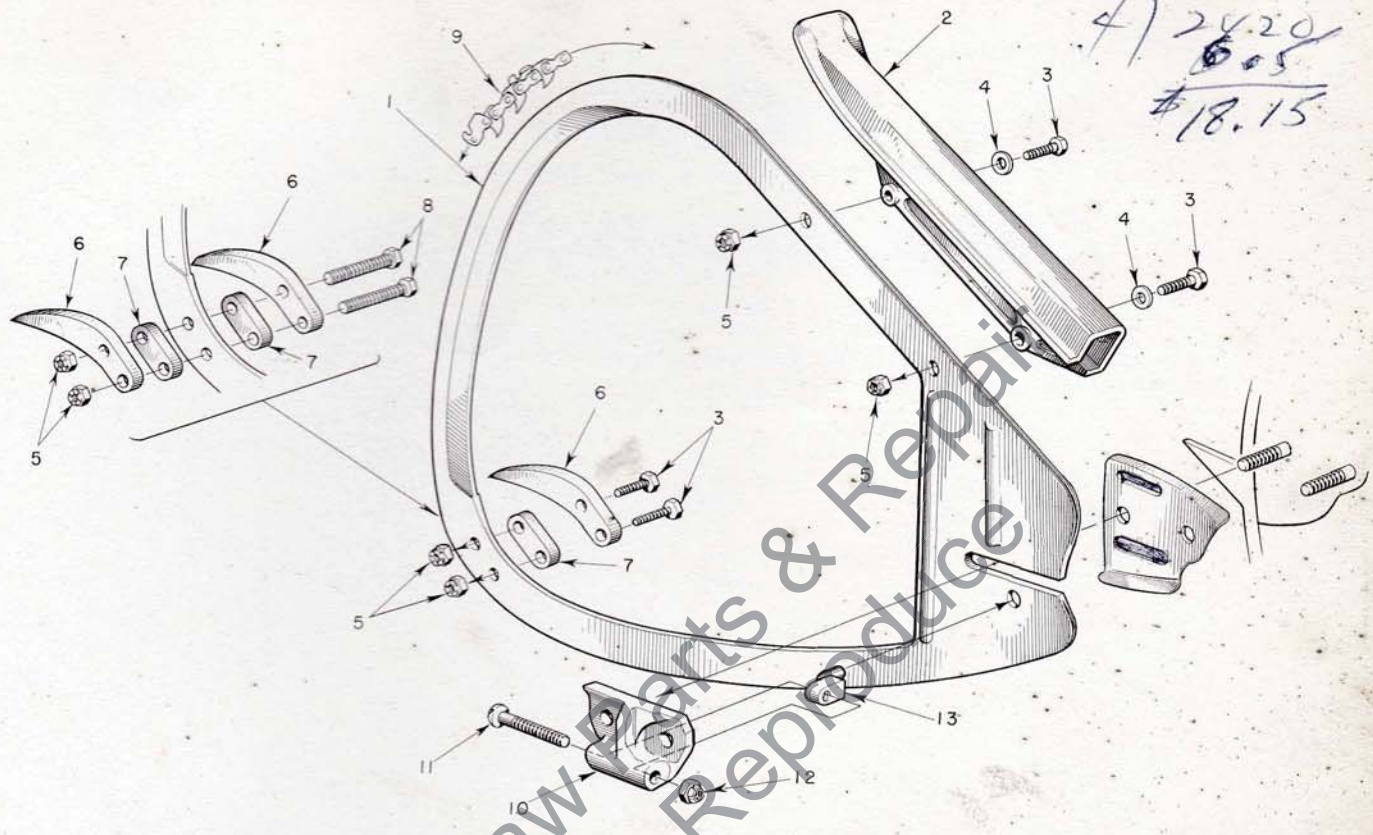


FIGURE 10 — PLUNGE CUT BOW ATTACHMENT

MAY 1960

Index No.	Part No.	Description	No. Required	Index No.	Part No.	Description	No. Required
1	A-56486	16" BOW GUIDE	1	9	A-51972	16" BOW CHAIN—#10, chipper	1
2	55948-A	GUARD	1		A-52505	16" BOW CHAIN—#32c, microbit	1
3	80355	SCREW— $\frac{1}{4}$ -20 x $\frac{1}{2}$ hex	2	10	A-55591-1	ADJUSTING PLATE (bow)	1
4	83009	WASHER— $\frac{1}{4}$ lock	2			Includes	
5	81013	NUT— $\frac{1}{4}$ -20 hex	2	11	80617	SCREW—tension adjusting	1
6	*75728	SPUR	1	12	81123	NUT	1
7	*75729	SPACER	1	13	55552	PIN	1
8	†80606	SCREW— $\frac{5}{16}$ -20 x $1\frac{3}{4}$ hex	2				

*Optional Equipment — 1 or 2 per bow.

†Use when bow has two spurs and two spacers

***SPECIAL TOOLS**

Part No.	Description	No. Required	Part No.	Description	No. Required
AA-22810	MAGNETO ROTOR REMOVER ASSEMBLY	1	22831	ASSEMBLY TOOL — needle bearing	1
A-23131	CLUTCH SPIDER PULLER ASSEMBLY	1	23267	ANVIL — sprocket shaft assembly	1
23136	BODY — assembling fixture	1	22828	PLIERS — for Tru-arc ring (piston)	1
23232	SLEEVE (for garlock seal)	1	22726	PLIERS — for Tru-arc ring (sprocket)	1
22820-1	ADAPTER — bearing assembling	1	22220	WRENCH — socket screw (conn. rod)	1
A-23137	JACKSCREW ASSEMBLY	1	23234	NEEDLE BEARING TOOL (conn. rod)	1
22812	PLATE — shaft aligning	1	23228	PLUG — bearing assembly	1
22830-A	ASSEMBLY PLUG — garlock seal	1	23318	SPRAY CAN — blue paint	1
23233	GARLOCK SEAL ASSEMBLY	1			

*When ordered only.

HOMELITE

Authorized Sales and Service Branches

Homelite sales and service factory branches are located throughout the country. Field representatives and factory-trained servicemen are always available, ready and able to keep your Homelites running in top performance at all times. See the "Yellow Pages" for the address and phone number of your nearest Homelite Branch office.

California

Alhambra (Los Angeles area)
Fresno
Sacramento
S. San Francisco

Colorado

Denver

Connecticut

Byram
Hartford

Florida

Jacksonville
Miami

Georgia

Atlanta

Illinois

Bloomington
Stone Park (Chicago area)

Indiana

Indianapolis

Louisiana

Bossier City
Metairie

Maine

Orono

Maryland

Baltimore

Massachusetts

Allston (Boston area)

Michigan

Detroit
Grand Rapids

Minnesota

St. Paul

Missouri

Kansas City
St. Louis

Nebraska

Omaha

New Jersey

North Arlington
Woodbridge

New York

Buffalo
Latham (Albany area)
Rochester
Syracuse

North Carolina

Charlotte
Raleigh

Ohio

Cincinnati
Cleveland
Toledo

Oklahoma

Oklahoma City

Oregon

Portland

Pennsylvania

Altoona
Erie
Harrisburg
Hazleton
Malvern
Philadelphia
Pittsburgh

Tennessee

Knoxville
Memphis

Texas

Dallas
Lufkin

Utah

North Salt Lake

Virginia

Arlington
Richmond
Roanoke

Washington

Seattle
Spokane

West Virginia

Charleston
Clarksburg

Wisconsin

Milwaukee

DOMINION OF CANADA

TERRY MACHINERY CO., LTD.

Quebec

Montreal
Quebec City

Alberta

Edmonton

British Columbia

Vancouver

New Brunswick

Moncton

Ontario

Ottawa
Toronto

HOMELITE

a division of Textron Inc.
PORT CHESTER, N. Y.

Printed in United States of America

Part No. 23478
10M-5-60

A TRUSPECTIVE Publication by
The PURNELL COMPANY
Boston, Mass.