

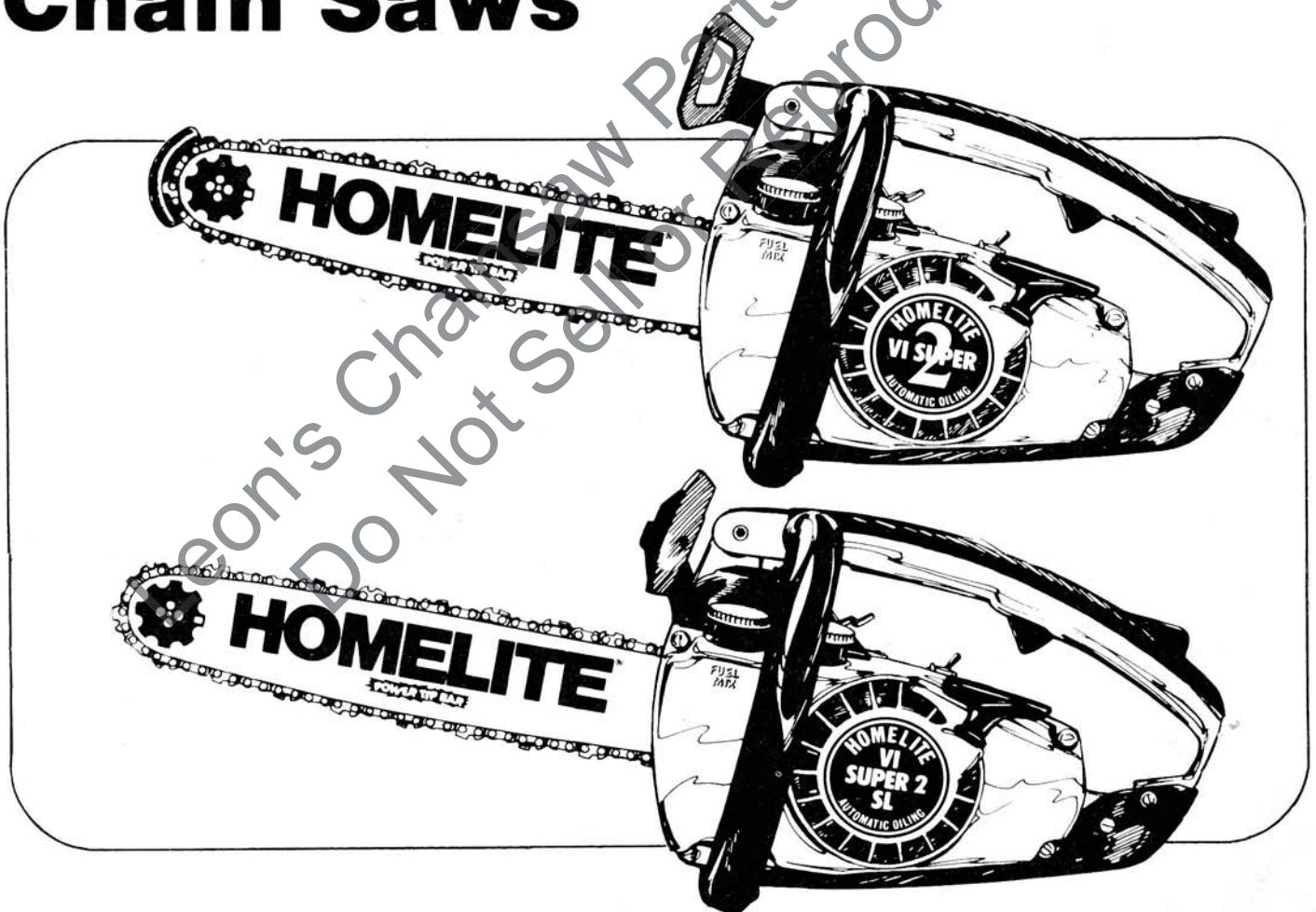
# parts list

HOMELITE®

## VI Super 2

## VI Super 2 SL

### Chain Saws



**HOMELITE** **TEXTRON**

Homelite Division of Textron Inc.

# VI SUPER 2, VI SUPER 2 SL

## ACCESSORIES

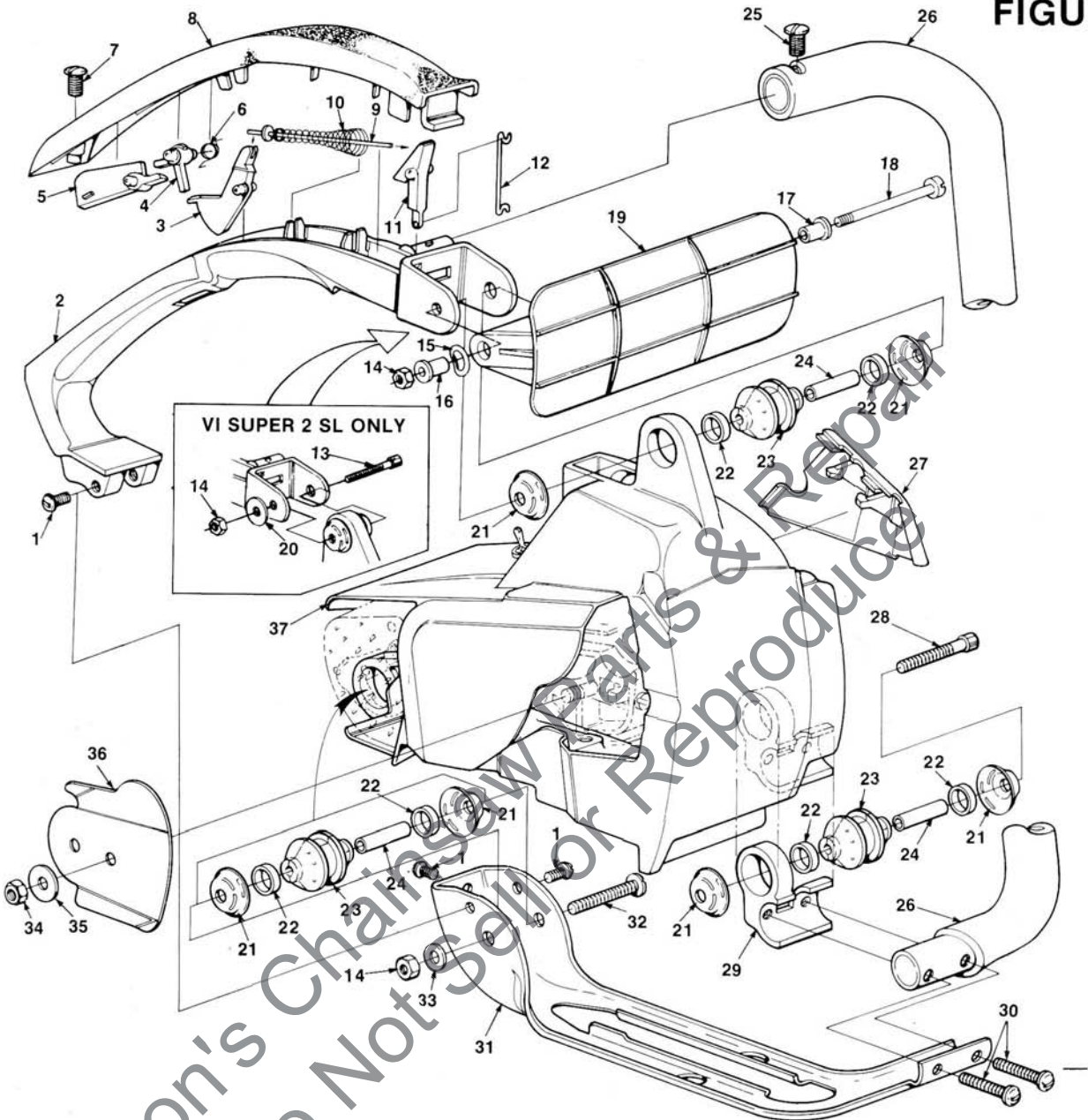
GASKET- Oil pump body	69596
KIT- Spark arrestor (for A-69253-1 Muffler)	A-69586-B
Includes:	
SCREW- Self tapping (#6 x 1/4) (3)	80328
ROPE- Starter #4 (250 ft.)	68848
SAFE•T•TIP® (Pat. Pending) (standard)	A-70776-A
Includes:	
SCREW (8-32 x .437)	93695
TUBING- Rubber (10 ft.)	70309-99
TUBING- Rubber (10 ft.)	70310-99
CARRY CASE- Black	94216
KIT- Sprocket bar repair	A-70239-C
Includes:	
BEARING- Guide Bar	70737
RIVET- Flat o.k.s. hd.	96623

## TOOLS

PULLER- Magneto rotor	A-24747-A
Includes:	
BOLT- 5/16 - 18 x 1 3/4	80288
NUT- Hex 5/16 - 18 (2)	81196
WRENCH- Spanner (clutch)	A-93791
Includes:	
PIN	23717-A
WRENCH- Flat (for guide bar nut) (Opt.)	24814
DRIVER- Check valve (for HDC-67 carb.)	24972
PLIERS- Tru-Arc	17198

# VI SUPER 2, VI SUPER 2 SL

## FIGURE 1



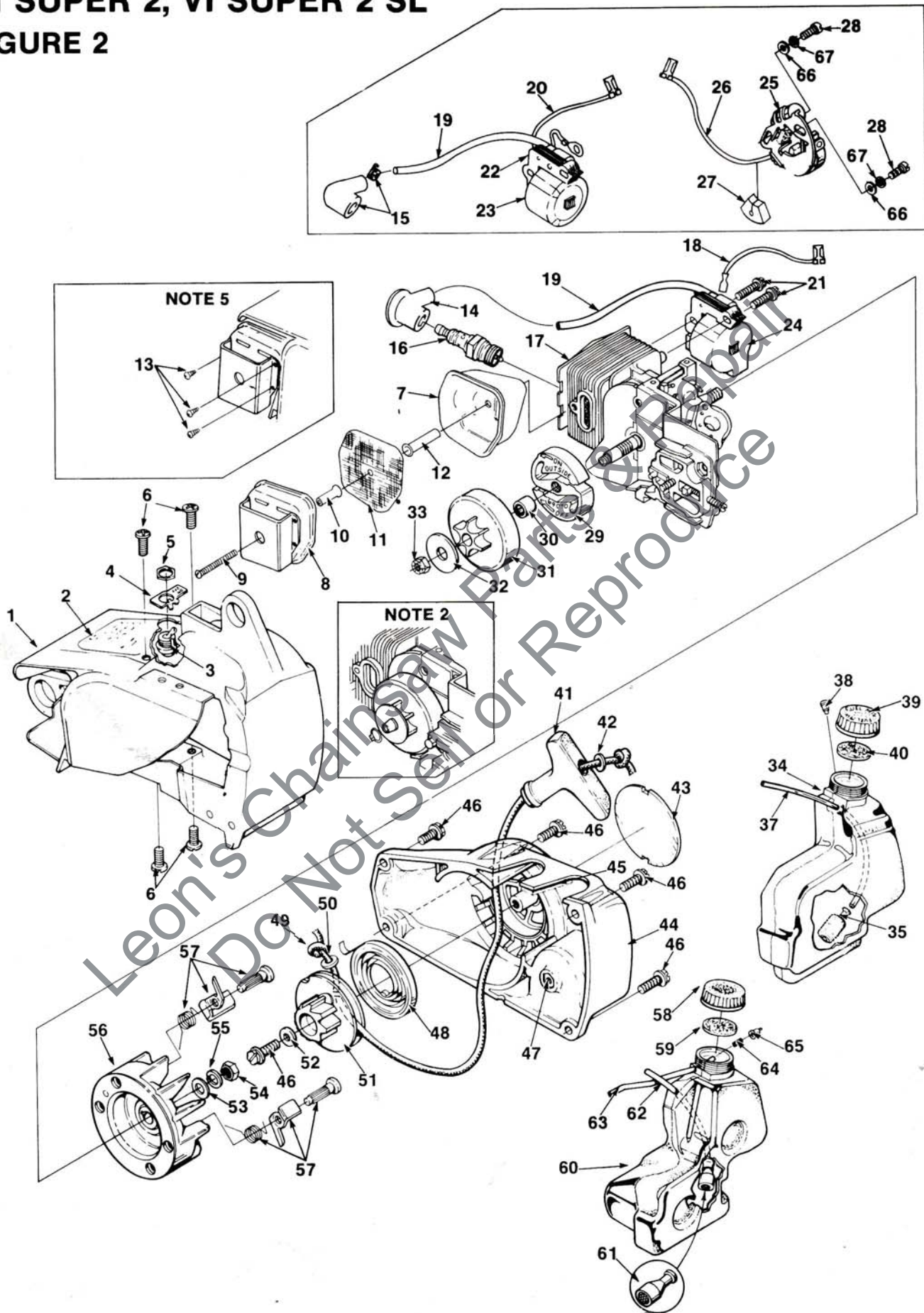
NO.	DESCRIPTION	PART NO.	QTY.	NO.	DESCRIPTION	PART NO.	QTY.
1	SCREW- Pan hd. (8-32 x 3/8)	80577	3	23	ISOLATOR- Vibration	70485-A	3
2	HANDLE- Throttle (see note 1)	70568-2A	1	24	SPACER- Isolator	70433	3
3	HANDLE- Throttle (see note 1)	70568-4	1	25	SCREW- Pan washer hd. (10-32 x 5/8)	82239	1
4	TRIGGER	70619	1	26	HANDLE BAR	A-70604	1
5	STOP- Throttle safety	70593	1	27	COVER- Air filter	70571	1
6	LEVER- Throttle safety	70594	1	28	SCREW- Cap hex soc. (10-32 x 1 3/4)	82310	1
7	SPRING- Torsion	70591	1	29	BRACKET- Isolator mtg	70558-2A	1
8	SCREW- Pan hd. (#10-32 x 5/8)	82239	1	30	SCREW- Hex hd (10-32 x 1 3/16)	80841	2
9	COVER- Handle	70626	1	31	BRACE- Handle	70554-1	1
10	ROD- Throttle	A-70614	1	32	SCREW- Pan hd (10-32 x 1 3/4")	82317	1
11	SPRING- Throttle rod	69249	1	33	WASHER- Flat (10)	84008	1
12	LEVER- Throttle	69107	1	34	NUT- Guide bar (1/4-28)	81065-2	1
13	ROD- Throttle	70612	1	35	WASHER- Flat	69309-A	1
14	SCREW- Cap hex soc hd. (10-32 x 1 3/4) (see note 2)	82310	1	36	PLATE- Guide bar	69360-1	1
15	NUT- Hex (10-32)	81206	2	37	HOUSING- Engine (see fig. 2 for breakdown)	A-70662-C	1
16	WASHER	95813	1				
17	BUSHING	95814	1				
18	BUSHING	95815	1				
19	SCREW- Mach. pan hd.	95869	1				
20	GUARD- Hand	95716	1				
21	WASHER- Flat	70632	1				
22	WASHER- Isolator	70440-A	6				
	RING- Isolator	70432-A	6				

NOTE 1: Units prior to Lot #1090 and chain brake units only.

NOTE 2: For units with steel hand guard 70802-1 require 70728 bellville washer and 70748 spacer, and screw 82321. 3

# VI SUPER 2, VI SUPER 2 SL

## FIGURE 2



# VI SUPER 2, VI SUPER 2 SL

## FIGURE 2

NO.	DESCRIPTION	PART NO.	QTY.	NO.	DESCRIPTION	PART NO.	QTY.
1	HOUSING- Engine Includes:	A-70662-C	1	44	HOUSING- Rewind starter Includes:	A-70663	1
2	PLATE- Instructions	70835	1	45	FILTER- Fuel tank valve	69443	1
3	SWITCH- Stop (grounding) Includes:	A-63938	1	46	SCREW- Hex washer hd. (10-32 x 5/8)	80572	4
4	PLATE- On-Off	70834	1	47	NUT- Center locking hex (#10-32)	81206	1
5	NUT- Hex	72084-A1	1	48	SPRING- Rewind	69217	1
6	SCREW- Pan hd. 10-24 x 1/2	96620	4	49	ROPE- Starter (#4, 34" long) Includes:	A-93874-A	1
7	MUFFLER Includes:	A-94051-B	1	50	WASHER- Nylon	93862	1
8	CAP- Muffler	A-95428	1	51	PULLEY- Starter	69158-A	1
9	SCREW- (10-24 x 1 3/4) SPARK ARRESTOR Includes:	82320	1	52	PULLEY- Starter (alternate)	94562-A	1
10	SPACER	A-94139	1	53	WASHER- Flat	63606-1	1
11	SCREEN- Spark arrestor	93989	1	54	WASHER- Flat	84065-1	1
12	SPACER	D-93991	1	55	NUT- Hex	81117	1
13	SCREW- #4 x .250 (note 5)	93990	1	56	WASHER- Lock	83002	1
14	TERMINAL- Spark plug (solid state) (serviced with item #15)	82342	3	56	ROTOR & STARTER PAWL (Solid State) ROTOR & STARTER PAWL (Point Ignition— Includes:	A-96714	1
15	TERMINAL- Spark plug (point ignition)	A-33055	1	57	KIT- Starter pawl (see note 4)	A-69297-B	1
16	SPARK PLUG— Champion DJ-7J See Figure 3	68616-S	1	58	CAP- Oil Includes:	A-70285-C	2
17	LEAD- Ground (Solid State)	A-94721	1	59	GASKET- Fuel filler cap (see note 3)	A-70893-B	1
18	LEAD- High tension (see note 1)	69326	1	60	TANK- Oil Includes:	94838-A	1
19	LEAD- Ground (point ignition)	A-95051	1	61	FILTER- Oil	A-70583-A	1
20	SCREW- Hex w/washer (8-32 x 3/4)	82248	2	62	TUBING- Rubber 6"	A-68593	1
21	CORE- Coil (point ignition)	69324	1	63	LINE- Pressure Includes:	70309-24	1
22	COIL- Ignition (point ignition)	69323	1	64	CONNECTOR- Oil line	A-69358-B	1
23	RETAINER- Coil (not shown) (point ignition)	69325	1	65	VALVE- Check (Duckbill)	69659-B	1
24	MODULE- Ignition (Solid State) (note 6)	94711	1	66	WASHER- Flat (Point Ignition)	69451	1
25	POINT SET- Breaker (point ignition) Includes:	A-69336	1	67	WASHER- Lock (Point Ignition)	84025	2
26	LEAD- Electrical (point ignition)	70249	1			83060	2
27	SEAL- Lead (point ignition)	69247	1				
28	SCREW- Fil. hd. (6-32 x 3/8) (point ignition)	88026	2				
29	CLUTCH "S" (see note 2)	A-70351-A	1				
30	BEARING- Clutch	68512	1				
31	SPROCKET & DRUM 3/8" 6-tooth	A-70221-C	1				
32	WASHER- Thrust (clutch)	95299	1				
33	NUT- Locking 5/16-24 (see note 2)	81112	1				
34	TANK- Fuel	A-70582-A	1				
35	FILTER- Fuel	96639	1				
37	TUBING- Rubber 9 1/2"	70310-38	1				
38	VALVE- Check (Duckbill)	69451	1				
39	CAP- Fuel (red) Includes:	A-70894-B	1				
40	GASKET- Filler cap (see note 3)	94838-A	1				
41	GRIP- Starter rope	70211	1				
42	WASHER- Flat	84025	1				
43	DECAL (VI Super 2)	70800	1				
44	DECAL (VI Super 2SL)	70798	1				

NOTE 1: For solid state ignition cut wire to 6 1/2".

NOTE 2: Crankshafts without threaded clutch end require retaining ring 93972.

NOTE 3: Use 70826 Gasket in A-70893 and A-70894 external thread caps. Use 69585 Gasket for caps with internal threads.

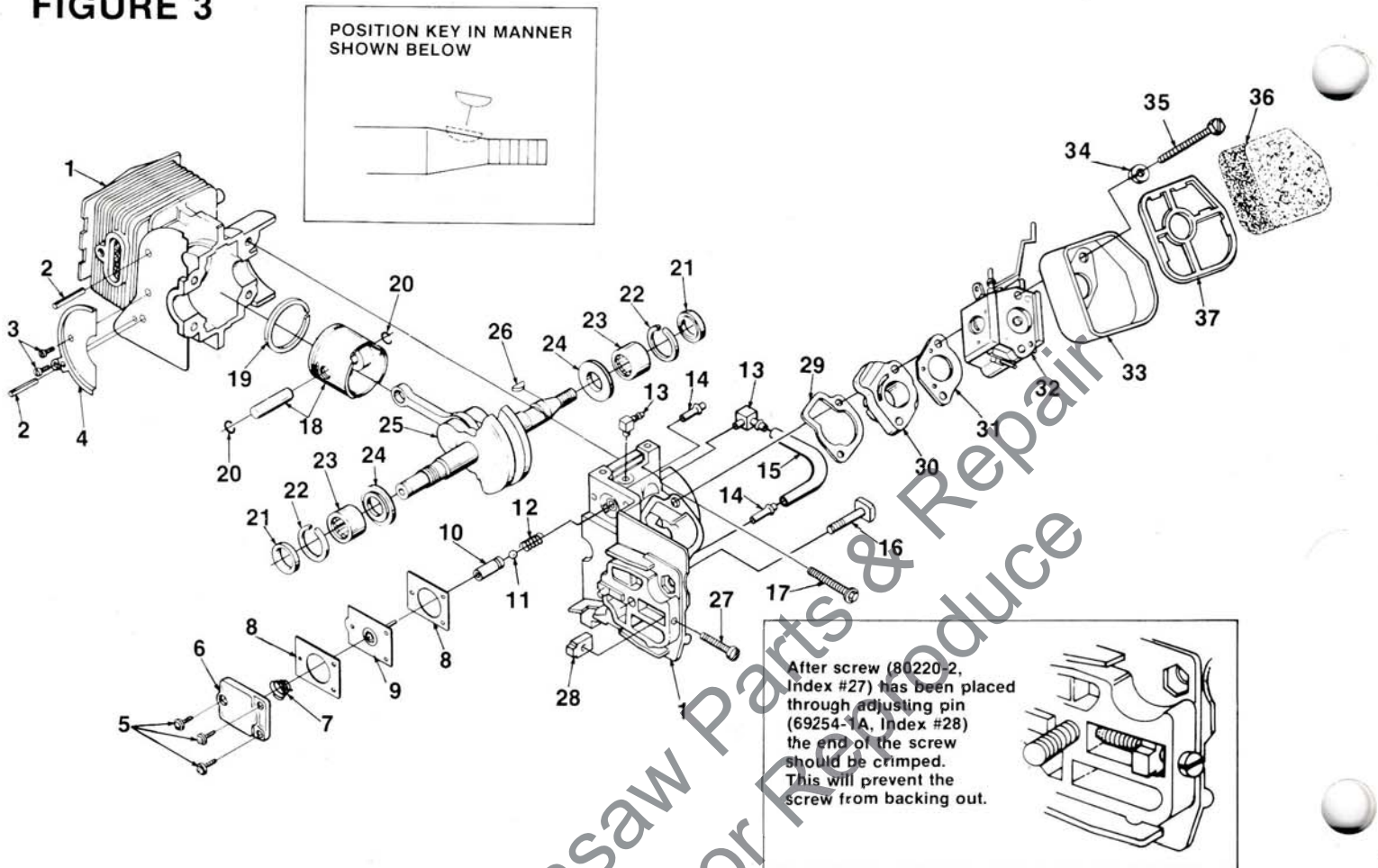
NOTE 4: Replacement starter pawl kit, item #57 includes an over sized pin. Paint, stamp or mark to identify over sized pin can be installed tightly only once. If oversized pin is removed, the entire rotor assembly must be replaced.

NOTE 5: Units with separate shield requires index #13 screw. All new muffler cap A-95428 includes a shield welded to cap.

NOTE 6: Module 94711 includes items 15 and 19.

# VI SUPER 2, VI SUPER 2 SL

## FIGURE 3

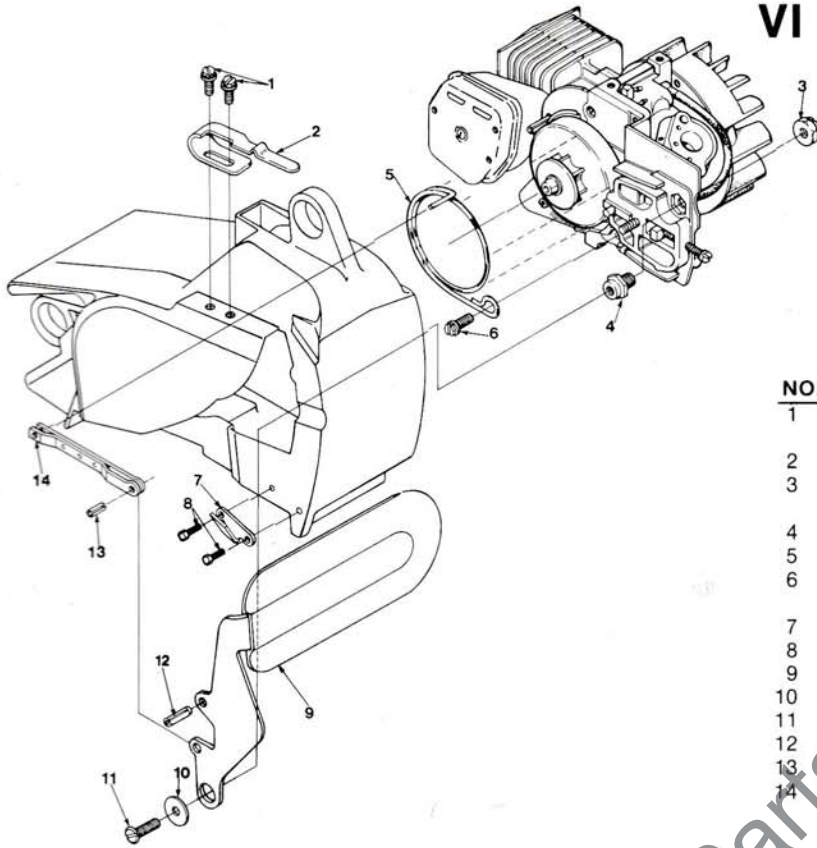


NO.	DESCRIPTION	PART NO.	QTY.	NO.	DESCRIPTION	PART NO.	QTY.
1	CRANKCASE & CYLINDER (Solid State) VI Super 2	A-95072		18	PISTON & PIN Includes:	A-70224-A	1
	CRANKCASE & CYLINDER (Point Ignition)	A-70226	1	19	PISTON RING	70205	1
	CRANKCASE & CYLINDER (Solid State) VI Super 2SL	A-95073	1	20	RING- Piston retaining	65261	2
	CRANKCASE & CYLINDER (Point Ignition)	A-70837	1	21	SEAL	94638	2
	Includes:			22	SPACER- Seal	69407	2
2	PIN- Roll (VI Super 2SL only)	70763	2	23	BEARING- Needle	12530	2
3	SCREW- Tapping pan (VI Super 2SL only)	93932	2	24	WASHER- Thrust	69093-B	2
4	PLATE- Retaining (VI Super 2SL only)	70724	1	25	CRANKSHAFT- (Solid State— CRANKSHAFT- (Point Ignition)	A-96384 A-96385	1 1
5	SCREW- Pan hd., (6-32 x 3/8)	80571	3		Includes:		
6	COVER- Oil pump	69224-1C	1	26	KEY- Magneto (see insert)	81112	1
7	SPRING- Oil pump	69447	1	27	SCREW- Adjusting fil. hd. (8-32 x 1)	69250	1
8	GASKET- Oil pump	69244-1	2	28	PIN- Adjusting	80220-2	1
9	PLUNGER- Oil pump	A-12356-B	1	29	GASKET- Intake manifold	69254-1A	1
10	BODY- Oil pump	69343-1	1	30	MANIFOLD- Intake	69143	1
11	BALL- Check valve	60051	1	31	GASKET- Carburetor	A-69373-A	1
12	SPRING- Check valve	68570	1	32	CARBURETOR- HDC 67	65016	1
13	FITTING- Oil line	70204	2	33	CUP- Air filter	A-96621	1
14	FITTING- Tube	69833	2	34	WASHER- Lock #10	70057	1
15	LINE- Oil	70161	1	35	SCREW- Hex hd. (10-32 x 2 1/4)	83006-1	2
16	BOLT- Guide bar	69195	1	36	FILTER ELEMENT- Air	80481	2
17	SCREW- Sems hex hd., (8-32 x 1)	88044	4	37	RETAINER- Air filter	70566 70556	1 1

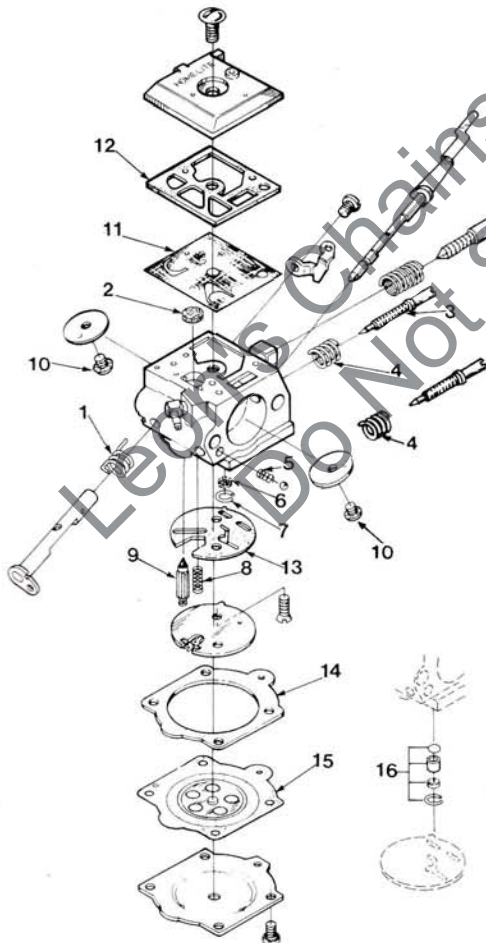
# VI SUPER 2, VI SUPER 2 SL

## FIGURE 4

### VI SUPER 2 SL CHAIN BRAKE & HAND GUARD



NO.	DESCRIPTION	PART NO.	QTY.
1	SCREW- Hex hd. w/washer 8-32 x 3/8	88026	2
2	CLIP- Retaining	70732	1
3	NUT- Hex 3/8-24 Power head (see figure 3 for breakdown)	81192	1
4	POST- Chain brake	70636	1
5	BAND- Brake	70637	1
6	SCREW- Hex (10-24 x 1/2) w/washer	88049	1
7	STOP- Chain	93649	1
8	SCREW- (8-32 x .500)	88042	2
9	HAND GUARD	A-94600	1
10	WASHER- Flat	70632	1
11	SCREW- (10-32 x 1/2)	82166	1
12	PIN- Roll (3/16 x 9/16)	93069	1
13	PIN- Spring (18-1/4)	57721	1
14	LINK- Pivot	A-70767	1



## CARBURETOR

A-96621

HDC-67

94056  
94701  
93910-A  
64229

Repair Kit (includes 1-15)  
Gasket/Diaphragm kit (includes 11-15)  
Check valve repair kit (#16)  
Inlet Needle (#9)

2284BNZ

**Homelite Division of Textron Inc.**

14401 CAROWINDS BOULEVARD  
CHARLOTTE, NORTH CAROLINA 28217

Leon's Chainsaw Parts & Repair  
Do Not Sell or Reproduce

**HOMELITE** **TEXTRON**

Homelite Division of Textron Inc.